



COOKE

FAMILY

REUNION

LIFTON
WILLIAM

CHARLES

SANDIFER

NATHANIEL

MARTHA ANN

HOSEA

ROBERT

HENRY

ESTHER

EVA

LUCY JANE

MACON

ELLIS COOKE

MATTIE SLOAN

August 5th and 6, 1989

Pacifica Hotel
6161 Centinela Ave
Culver City, CA

C O O K E F A M I L Y R E U N I O N

Our roots are strong unbroken lines extending deep into the past of two individuals who joined together to become our ancestors. We are proud of our heritage and our ancestors.

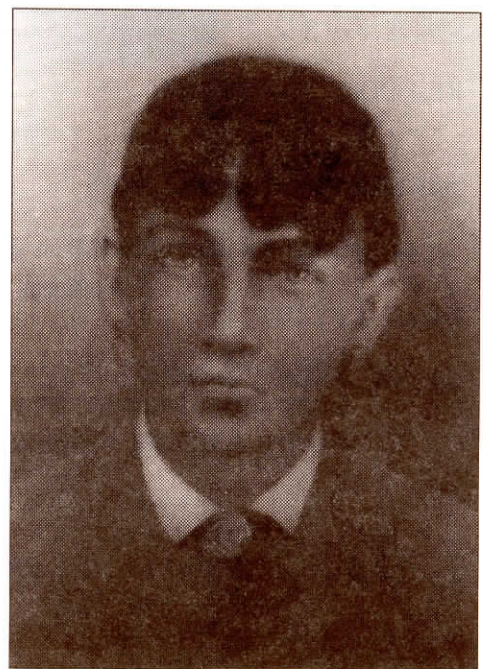
From the bondage of slavery our ancestors emerged and created a family we are all proud of. We have representatives of societies most respected professions. Who and what we are was influenced by our ancestors. Their unique qualities merged throughout the generations to create who we are today.

Family reunions help us to reach back into our past and learn about our history. By gathering together we can gain a sense of unity and pride and each family unit can grow stronger. Our past is treasured information. Unique and unlike any other. This will give us something to reflect upon and remind us of the great times we all shared at our first family reunion.



Ellis Cooke
1858-1911

Born: Clark County, Arkansas
Married: August 25, 1881
Education: No Formal Education
Self Taught
Occupation: Farmer



Mattie Sloan Cooke
1857-1934

Born: Clark County, Arkansas
Married: August 25, 1881
Education: No Formal Education
Occupation: Wife and Mother

Robert, Macon, and Lucy Jane



Charles
Grandfather
Henry
Martha Ann

Eva
William
Grandmother
Nathaniel

Sandifer and Clifton

**Family Picture
Taken Approximately 1903**

Ellis and Mattie Sloan Cooke joined by all family members.
Lucy Jane, Macon, Eva, William, Charles, Sandifer, Nathaniel,
Henry, Clifton, Martha Ann and Robert.

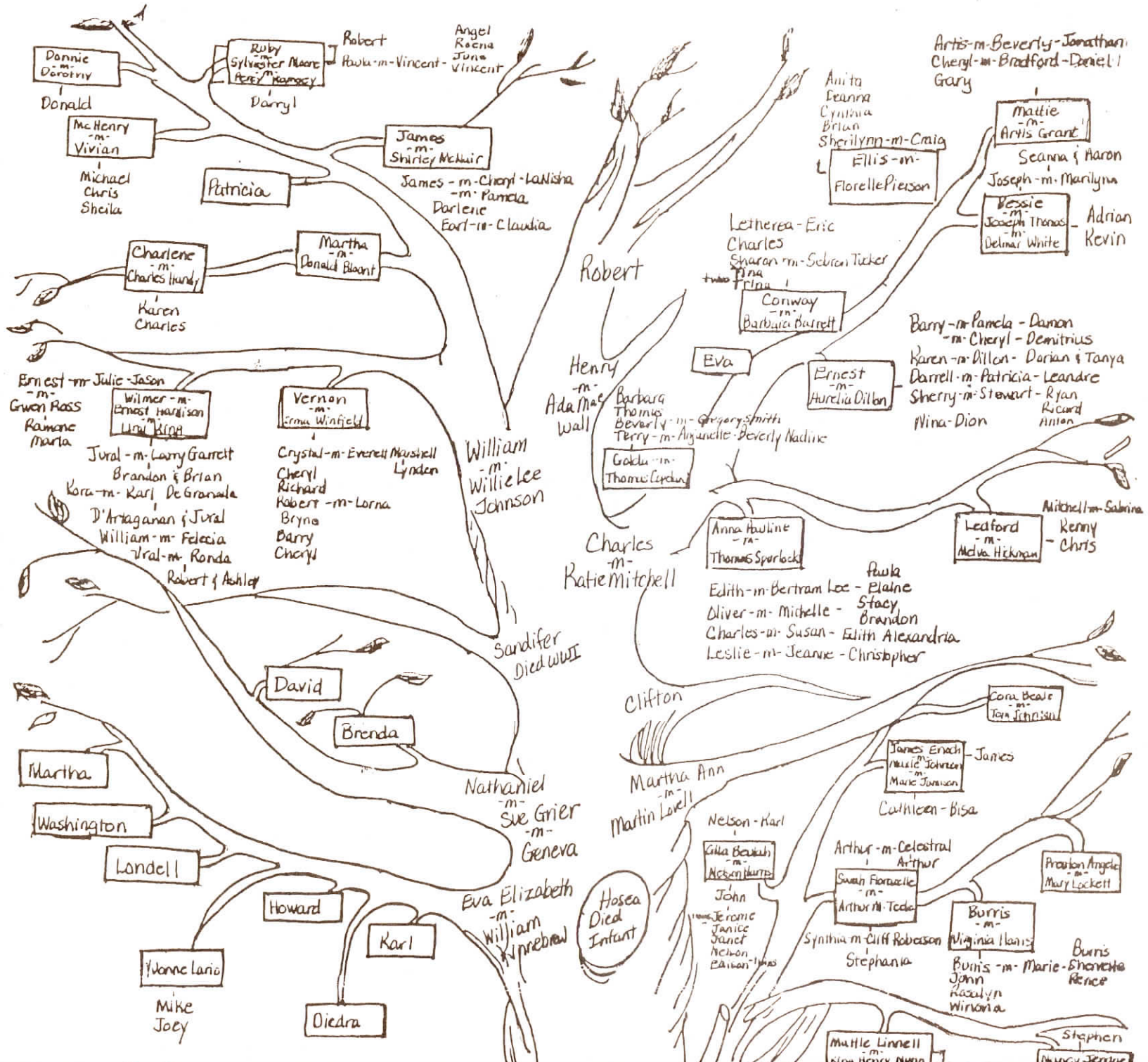
P R O G R A M

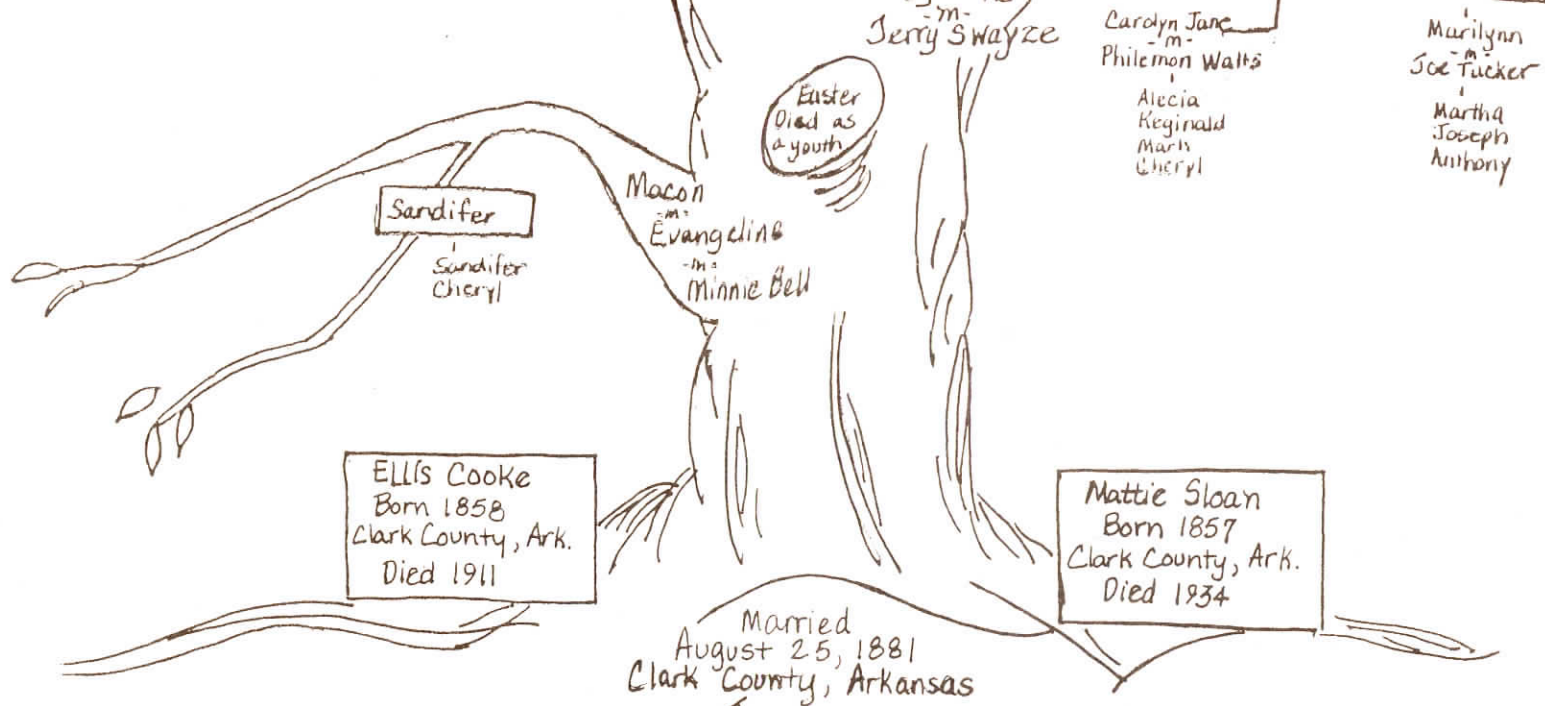
GREETINGS.....ELLIS W. COOKE
WELCOME.....JAMES COOKE
INVOCATION.....DR. ARTHUR E. TEELE, SR.

D I N N E R

REFLECTIONS OF COOKE FAMILY.....ANNA P. SPURLOCK
.....FLORAZELL SWAYZE TEELE
FAMILY HISTORY RESEARCH.....CAROLYN NUNN WATTS
FAMILY TREE ARTWORK.....AURELIA DILLION COOKE
INTRODUCTIONS OF FAMILIES
LUCY JANE.....FLORAZELL SWAYZE TELLE
CHARLES HARRIS.....ANNA P. SPURLOCK
WILLIAM.....WILMER COOKE KING
EVA ELIZABETH.....DR. MARTHA K. PARKER
DESCENDANT OF TEMPIE MITCHELL,
SISTER OF MATTIE COOKE.....EVA JACKSON GASSAWAY
ACKNOWLEDGMENTS.....GOLDA COOKE COPELAND
MUSICAL ENTERTAINMENT.....TOLITA LONG
INTRODUCTION.....BESSIE COOKE WHITE

DANCING
MUSIC BY MAURICE RODGERS, D. J.





The Cooke Family

COOKE FAMILY

In 1881, Mattie Sloan and Ellis Cooke became one.
Arkansas was where it would start
With love, determination and God in their hearts.

To this union thirteen children were born,
Eleven lived until they were grown.
With no education and not much else,
He made his living as a farmer and taught himself.

Strong moral values and respect were taught.
Education was stressed and religious beliefs sought.
Grandfather's word was the only law you would need
For when he spoke all would take heed.

They both worked hard through much toil and strife
So all their children could have a much better life.
As each child grew up and set out on their own,
Those values they took, they were never alone.

So today they look down from heaven above
To see their family gathered together in a spirit of love.
With great satisfaction they observe everyone
And congratulate each other on a job well done.

By Beverly Copeland Smith

Mother to Son

Well, son, I'll tell you:
Life for me ain't been no crystal stair.
It's had tacks in it,
And splinters,
And boards torn up,
And places with no carpet on the floor--
Bare;
But all the time
I've been a-climbin' on,
And reachin' landin's,
And turnin' corners,
And sometimes goin' in the dark
Where there ain't been no light.
So boy, don't you turn back;
Don't you set down on the steps,
'Cause you find it's kinder hard;
Don't you fall now--
For I've still goin', honey,
I've still climbing',
And life for me ain't been no crystal stair.

-Langston Hughes

REUNION COMMITTEE

Chairperson	Golda Cooke Copeland
Co-chairperson	Bessie Cooke White
Program	Ellis Cooke
Picnic	Ernest King / Charles Cooke
Host / Hostess	Earl Cooke
Activities	Alicia Watts
Tee Shirts	Darlene Cooke / Jural King Garrett
Decorations	Cheryl Grant Brown
	Aurelia Cooke
	Florell Cooke
	James Cooke
	Shirley Cooke
	Beverly Copeland Smith
	Barbara Copeland
	Sara Mae Cooke
	Ledford Cooke
	Charlene Cooke Handy
	Anna Pauline Spurlock

"Sincere thanks to all that made this reunion successful"

SCHEDULE OF EVENTS

HOTEL PACIFICA
6161 Centinela Avenue, Culver City, Ca. 90230

AUGUST 5 and 6, 1989

FRIDAY - August 4, 1989 early arrivals
(check in time 3:00 p.m., Check out 12:00 Noon)

6:00 P.M. Hospitality room open

8:00 P.M. Cruise cousin get acquainted party - Marina del Rey

SATURDAY - August 5, 1989

10:00 A.M. Hospitality room open - Free time for sight seeing

5:00 P.M. - Group picture - Foyer - outside banquet room

6:00 P.M. - Social hour - Foyer - Outside banquet room

6:30 P.M. - Dinner / banquet / Dance

SUNDAY - August 6, 1989

A.M. - Attend church of your choice

1:00 p.m. - Family picnic - Home of Conway Cooke Family
712 W. Tichenor St., Compton, Ca.
(see directions below)

2:00 P.M. - Group picture in Cooke Family Tee Shirts

