



Unique art form
Page 9

KEY PENINSULA NEWS

The voice of the Key Peninsula



Sept. 1

Non-Profit Org.
U.S. Postage
PAID
Wauna, WA 98395
Permit No. 2
BOX HOLDER

www.keypennews.com

Vol. 40 Issue 9 • Circulation 9,000

INSIDE & ONLINE

SEPTEMBER 2011

Exclusively Online



GH Kennel Club volunteer perk

Also online

- Key Center construction
- Beyond the Borders
- Photo gallery and more

Become a fan on Facebook
Follow us on Twitter

keypennews.com



Inside

News

News 2-5

Sections

Peninsula Views 6

Features 9-11

Community Works 12-13

Real Estate 14-16

Fire and Crime logs 18-19

Out & About 24

Federal law requires new 9-1-1 system, proposal to go on ballot if enacted

By Peter Ruble, KP News

A proposal to revamp the current Pierce County 9-1-1 emergency call system is currently being considered for placement on the November ballot. If Pierce County voters approve the measure there will be a consolidation of the Law Enforcement Support Agency Dispatch Center, the Washington State Patrol, the Pierce County Fire Dispatch and the Puyallup and Tacoma fire departments. Key Peninsula taxpayers would fund the operation with a sales tax amounting to 1/10 of 1 percent. The money would fund the building and equipment. Each agency

(See 911, Page 8)



Photo by Matthew Struthers, Special to the KP News

Reflective moment

A resident mature bald eagle rests a moment on Jackson Lake.

Flemming districted out, remains committed to KP

By Marsha Hart, KP News

Though the redistricting of Pierce County had a controversial outcome, and District 7 representative Stan Flemming has been districted out of the area he represents, everything is status quo for now.

"The people of the Key Peninsula, Gig Harbor and University Place elected me, and those are the people I represent," Flemming said. "For the next three years, I can tell you nothing will change on the peninsula or the Gig Harbor area in terms of representation and having voices heard."

After each census, the Pierce County Council appoints mem-

bers to the districting committee. That committee is made up of two members of each major party, and those four members then appoint a fifth member who serves as chair. Retired judge Karen Seinfeld was appointed as chair.

Mike Abernathy, a Republican who lives on the Key Peninsula served on the committee.

The committee must appoint a districting master to draw district boundaries based on population numbers, with the goal of keeping each district equal. This entire process has to be completed within 60 days, and in those 60 days, districting master

(See Flemming, Page 3)

Neighbors run for elected positions

The following are statements for candidates applying for the open positions on the 2012 Key Peninsula Community Council (KPC). You are invited to vote for the Council directors and exercise your right to influence the work of KPC by using the KPC Voter Ballot published in this issue of KP News. The work of the Council is to represent Key Pen issues and concerns to government agencies, to provide educational forums and to participate at major local events.

All KP residents and owners of KP property over the age of 18 are eligible to vote for KPC directors. Follow the instructions on the KPC Ballot and help to create a strong authentic representative voice for the Key Peninsula.

Area 1 Matt Wong

I have lived in Purdy for most of my life and would like to represent Area 1 and the SR-302 Wauna corridor. Working with my parents at Aloha Beachside Bed & Breakfast and Crevis-

ton Valley Farm I feel deeply rooted in the community and its affairs. I plan on graduating from the University of Washington Tacoma with a degree in Politics, Philosophy, and Economics, which I believe will aid me in helping the KPC support its community by addressing concerns with legislation and emergency planning.

Area 2 Mary Ware Blythe

As Director of the Key Peninsula Community Council, I would establish a disaster preparedness committee to further the progress of the council and the fire department to coordinate our residential and business communities' efforts to be ready to survive and recover efficiently from any major emergency. Also, I would enjoy working with the Youth Committee and any other committee on which I might be of use. I am married to Buck Blythe, have a BA degree in Community Development and have enjoyed living on the Peninsula for two years. I want to see the Key Peninsula thrive

for years to come.

Experience and Background: I have long been interested in community development. I've lived and worked for a number of different types of communities—a ballet company, as a soldier in the US Army, in an intentional community, in an educational institute, as an Activities Director for skilled nursing and assisted living facilities and in the development of Point Ruston in Tacoma. I have two AA degrees in General Education and Architectural Engineering Design and recently received a Bachelors degree from The Evergreen State College in Community Development.

Audra Garcia

I came out to the Key Peninsula to start a family and become a member of this wonderful community in 2002. It is through my children that I am becoming a

bigger and bigger part of the area. Now I feel that I am being pulled to become part of the council in order to promote/protect the

community that I have come

to love. I want to be able to provide answers for the community, as well as a voice for their concerns. I also want to assist in the development of our community as inevitable changes occur, to help in growing our community into something we can continue to be proud of.

Experience and Background: PTA Member, Minter Creek; Local Volunteer/Fund Raiser; Girl Scout Leader/Recruiter; Substitute Bus Driver, PSD401.

Danna Webster

In 2012, I look forward to continuing the cooperative effort between KPC and the Key Peninsula Fire Department of establishing an emergency ready Key Peninsula. I also intend to continue the efforts of the KPC to strengthen relationships with our state, county and federal government representatives. I will work to make the council a good listening post

(See Candidates, Page 3)



Trillium Creek Winery
G Street Home, WA.

Claude features French Style Wines
Tour: Five acres of vineyards and wine cellar-then go to the Alsatian Cottage for your wine tasting.

253 884 5746
trilliumcreekwines@msn.com

French Style Low Sulfite Wines & Golden Glen Creamery Cheese



9013 Key Peninsula Highway
- located in the KC Corral -
Phone: 253-313-0240
Fax: 253-313-0241
lakebay@goinpostal.com

FedEx UPS Postal Mail

ADDITIONAL PRODUCTS AND SERVICES:

Copy Services	Office Supplies	Postal Mailboxes
Black & White	Packing Supplies	Notary Services
Color	Custom Packaging	eBay Selling Agent
Booklet	Greeting Cards	Kodak Digital Photos
FAX Services	Laminating	Passport Photos

To subscribe, please write, call or fax:
Key Peninsula News
17010 S. Vaughn Road
P.O. Box 3, Vaughn, WA 98394
Phone (253) 884-4699
Fax: (253) 884-4053
E-mail: news@keypennews.com

KEY PENINSULA NEWS

www.keypennews.com

Unsolicited submissions deadline including press releases: 15th of each month prior to publication

Key Peninsula News is published monthly by the Key Peninsula News publishing board in Vaughn, Washington. The Key Peninsula Civic Center Association is the non-profit parent organization. Copyright 2011 with all rights reserved. Reproduction of editorial or graphic contents in any manner without permission is prohibited. Annual subscriptions (12 issues) are available for \$30.00 and are mailed first class. Copies are mailed presort standard to residents and post office box holders of the Key Peninsula. Single copies are available at the newspaper office in the basement of the Civic Center annex and at various distribution points located on the Key Peninsula. Approximately 18,000 people live in the distribution area.

STATEMENT OF OWNERSHIP, AND OPERATION OF THE KEY PENINSULA NEWS

1. THE KEY PENINSULA NEWS is a community newspaper, owned and published by the KEY PENINSULA CIVIC CENTER ASSOCIATION, a nonprofit, 501-C3 corporation with main offices in Vaughn, Washington. The name, goodwill and any copyright assets that may exist pertaining to the NEWS are among the financial assets of

Executive editor: Marsha Hart
Assistant editor: Danna Webster
Ad sales: Lisa Larson, Glenna Nelson
Community pages editor: Connie Renz
Production: Chip Butzko, Paige Nader
Interim web master: Brett Higgins
Staff: Hugh McMillan, Colleen Slater, Frank Slater, Irene Torres, Karina Whitmarsh, Sharon Hicks, PJ Kezele, Kevin

Reed, Karen Lovett, Kyle Coster, Ed Johnson, Eleanor Walters, Rick Sorrels, Peter Ruble, Patricia Johnson.
Distribution: Vic Renz, Phil Bauer, Frank Slater, Bill Dietz, Kevin Reed
Contributors: Jerry Libstaff, Ron Cameron, Dan Whitmarsh, Faith Rhodes, Gayle Herman, John Gizzi.

the KEY PENINSULA CIVIC CENTER ASSOCIATION.

2. The objective of Key Peninsula News is to support and create community by reporting news and features and providing a forum for local information. News and editorial coverage focuses on the Key Peninsula and immediately adjacent areas within Fire District 16.

OUR GRATEFUL THANKS TO ALL WHO CONTRIBUTE TO THE KEY PENINSULA NEWS!

The opinions expressed herein are the opinions of the writers and do not necessarily reflect the views of the publishers or staff. All letters to the editor must be signed and include a daytime phone number for verification. No anonymous letters will be published. Submissions are used on a space available basis and may be edited if used. THE KEY PENINSULA NEWS reserves the right to edit all submissions for length and content. Mail letters to: P.O. Box 3, Vaughn, WA 98394, or e-mail to news@keypennews.com.

(From **Flemming**, Page 1)

Steven Garrett submitted nine different maps for consideration. The target was a population of 113,600 in each district.

The committee received a final version of the map June 28, and had to approve a map by midnight on July 13 or the final map would become the map by default. Garrett's final map was approved by the committee with a vote of 3-2 on July 12.

Abernathy and Deryl McCarty, the other Republican on the committee, voted no.

The final map redrew lines that moved University Place within District 4, which is where Stan Flemming, a Republican, resides. University Place is now represented by Democrat Tim Farrell. Farrell's term will end in 2012. Flemming will continue to serve District 7 through 2014.

This story originally appeared in our August online edition at keypennews.com.

(From **Candidates**, Page 2)

and ensure that the voice of Key Pen is heard.

Experience and background: KP News 2003-2011; KPC Director 2004-2011; KP Farm Council (Farm Tour and Farmers Market) 2007-2011; KP Business Association Vice President 2009 and 2010; KP Community Planning Board for KP Comprehensive Plan 2005-2007.

**Area 3
Chuck West**

I graduated from Peninsula High, have lived on the KP for over 35 years and I have been employed by Key Peninsula Fire for 25 years. I would like to see the Community Council

reach out to and be a uniting force for all aspects and communities of the KP. I feel the intent of the council is implementation of the shared vision we expressed for the future in our community plan. The council should be our advocates to the various agencies that have a direct effect on our community and should protect our interests.

Experience: Current Chair of KP Land Use Advisory Commission, Member of Community Planning Board, Fire Service membership includes; Pierce County Fire Chiefs Assoc, WA Fire Chiefs Assoc. and International Assoc. of Firefighters.

Area 4

No candidate statements available.

Discipline Respect
Honor Integrity



BLACK BELT ACADEMY
Creating Tomorrow's Leaders Today

Introductory Classes
Thursdays at 6 pm
Key Peninsula Civic Center.

Get started today for only \$70!

Call
206-949-9722
for an appointment
ATA Black Belt Academy

Peninsula Youth Orchestra
Registering NOW!
BEGINNERS WELCOME!!



- **BEGINNER & Experienced Students**
- **FOUR Orchestra Levels (Beginner - Advanced)**
Experienced students call to reserve audition time
- **GRADES 4 - 12**
- **Violin, Viola, Cello & Bass instruction**
- **Professional/Certified teachers**
- **Rehearsing Weekly - September thru May in Gig Harbor**
- **AFFORDABLE - Some Scholarships & Instruments available**

More Information?
(253)534-5384, info@harborpyo.org
www.harborpyo.org

1st Annual Doing the Key Golf Tournament

Saturday, Sept. 24
Trophy Lake Golf Course

*It's a hole in one...
enjoy a fun filled day of golf
and support the
Key Peninsula Civic Center*



*You don't have to golf to join the fun!
Dinner banquet & silent auction
tickets available for family and friends.*

Tournament registration is \$125 per person.
Dinner & silent auction tickets are \$30.

Tournament registration includes: green fees, golf cart, driving range, award ceremony, and dinner banquet and silent auction.

To register, please complete the online application, or pick-up a registration form from Sunnycrest Nursery or the KPCCA Office. Registration forms and checks or money orders should be sent to: KPCCA, PO Box 82, Vaughn, WA 98394.

www.kpciviccenter.org
Facebook • Twitter
kpciviccenter@centurytel.net • 884-3456

BRIEFS

Community

County recommends pertussis immunizations

The Tacoma-Pierce County Health Department has seen a sharp rise in pertussis (whooping cough) cases in recent weeks. In July, 18 pertussis cases were reported in Pierce County. The Tdap vaccine is recommended for all residents - adults and children-as an effective way of to increase community immunity to the disease. "Pertussis is an easily preventable and treatable illness, and we are concerned by the elevated rates reported last month in Pierce County," said Dr. Anthony Chen, Director of Health, Tacoma-Pierce County Health Department. "This is a good reminder to the community about the importance of keeping up to date on vaccines, and being vigilant to the prevalence of communicable diseases."

As of July 31, 2011, there were 68 reported cases of pertussis in Pierce County. Medical providers and patients should be

aware that a severe or prolonged cough illness could be pertussis. This is especially true for patients who are high risk or who are in contact with high risk individuals. High risk patients are defined as infants less than 12 months of age, women more than seven months pregnant and health-care workers who may have face-to-face contact with patients.

Immunizations that protect against pertussis are readily available for children and adults. High levels of immunization in the community, or "community immunity," help to prevent outbreak and makes our county a healthier place to live. August is National Immunization Awareness Month, and the Tacoma-Pierce County Health Department joins the Centers for Disease Control in urging Pierce County residents to make sure they are up to date on immunizations. With school quickly approaching, it is a good time to make sure children and the adults they live with are protected against immunization preventable diseases.

For more information about immunizations, visit <http://www.tpchd.org/resources/immunizations/> or see your health care provider. More information on pertussis is available from the Washington State Department of Health at <http://www.doh.wa.gov/EHSPHIL/factsheet/pertussis.htm>. About the Tacoma-Pierce County Health Department The Tacoma-Pierce County Health Department's mission is to safeguard and enhance the health of the communities of Pierce County. As part of its mission, the Health Department tackles known and emerging health risks through policy, programs and treatment in order to protect public health. Learn more at www.tpchd.org.

Volunteer workshop for Stream Team

Pierce Stream Team will hold a stream-monitoring workshop on Saturday, Oct. 1, from 9 a.m. to noon. Interested in learn-

ing more about local streams, water quality, and what you can do to help protect them? This is the workshop for you. The training will cover water quality testing, stream flow measurement, and habitat assessment. Once trained, volunteers are assigned to a stream site of their choosing and can begin sampling at their convenience. Data collected by stream monitors are periodically uploaded to the University of Washington's Naturemapping website. Volunteer stream monitors play a key role in stream stewardship by raising awareness of pollution problems and providing water quality data the community can use to protect local streams.

To register for the stream monitoring workshop, please contact Stream Team at (253) 845-2973 or isabelr@piercecountycd.org.

Directions to the workshop location and other information will be sent upon registration. Isabel Ragland Pierce Stream Team 5430 66th Ave E P.O. Box 1057 Puyallup, WA 98371 253-845-2973.

"We will beat any competitor's prescription price."

Purdy

COST LESS

Prescriptions *and more!*

14218 92nd Ave., NW Gig Harbor, WA 98329

253 857 7797

Call for a price quote

Last Minute School Supply Sale

Sept. 1 thru Sept. 10

Key Peninsula Community Services

Providing essential services since 1982

Dear Community Members,

We would like to thank all our primary sponsors for this years Golf Tournament and Old Timers Day Festival & Logging Show!

CostLess Prescriptions, Peninsula Market, Peninsula Light Co., NuStar Energy, Sound Credit Union, Sunnycrest Nursery and a multitude of other businesses from our community that contribute to the success of our fundraisers!!

THANK YOU FOR SUPPORTING THE WORK WE DO!

Penny Gazabat
Executive Director

Located at:
**17015 9th St Ct KPN
Lakebay, WA 98349**
(two blks. south of the Home Bridge)

Thank you Key Peninsula community members for your support. We are honored to serve those in need and appreciate our communities financial assistance in meeting that need.

THANK YOU!

PO Box 392
Lakebay, WA 98349
Phone: 253 884-4440
Fax: 253 884-6196
www.KeyPeninsulaCommunityServices.org

Pierce Transit eliminates Route 113 for KP

With one of the lowest usage rates, Route 113 gets the axe. Included with it are services for seniors and disabled. Purdy Park-and-Ride will be the closest stop.

By Rick Sorrels, KP News

All Pierce Transit bus service for the Key Peninsula will cease to exist on Oct. 2, the result of a vote by the Pierce Transit Board of Commissioners taken on June 13.

The tax levy for Pierce Transit that appeared on the February ballot failed. Had it passed, current bus service would have continued throughout Pierce County.

Leading up to the February election, Pierce Transit officials had announced that bus service on the KP would be safe from cuts, even if the levy failed. (See February issue of KP News, available on-

line at keypennews.com.)

According to Jessyn Farrell, the strategic advisor for Pierce Transit, "The \$51 million budget shortfall was worse than expected. Drastic cuts must be made. Our initial proposal, presented to the board on May 9 was rejected." That proposal would have ended all bus service on the KP.

"Our marching instructions from the board were to cut 35 percent of all bus service across Pierce County, concentrating on retaining the routes with the heaviest use," said Farrell. "These route cuts are in addition to administrative and personnel cuts already made."

Route 113 for the Key Peninsula has had one of the lowest usage rates for the entire system.

Tina Lee, a planner for Pierce Transit, said "With the elimination of Route 113 (Bus Plus), all off-route service for seniors and disabled will also be eliminated."

The Purdy Park-and-Ride will become the closest service stop. Route 100 on the

Gig Harbor Peninsula will be retained, but with one less trip.

The Route 102 Express from the Purdy Park-and-Ride will also continue, with one less trip each day.

Pierce County Councilmember Tim Ferrill (who also holds a seat on the Pierce Transit Board, and voted against the motion), working with Pierce County Councilmember Stan Flemming (who represents the Key Peninsula) is in preliminary negotiations for a replacement transit service for the KP.

No details are available yet for public release, and even if negotiations are successful, all bus service will still end in October with no replacement yet established.

The Mustard Seed Project is independently making efforts to establish additional ride share and bus service on the KP, this is in addition to the free ride program which they already have available for seniors and disabled.



WayPoint Church
pointing the way to Jesus...

12719 134th Ave KPN
853-7878

Sunday Services
9:30am & 11:00am
Children's Programs both services,
10am Adult Class, 11:30am High School & Middle School Classes

Student Ministries Meet
Monday Nights @7pm
go to five17.com for more info on youth events.

LISTEN TO
SERMONS ONLINE
www.waypoint-church.org

Download
Pastor Tim's Sermon
"360"

Do your trees need some work?

CALL OUR CERTIFIED ARBORIST: 253 405-6940

Ask about our safe & effective ORGANIC SPRAYING



Exclusive Key Peninsula Discounts

Wind Resistance Thinning	10% off
Proper Pruning	10% off
Tree Replacements	10% off
Dangerous Removals	15% off
Stump Grinding	20% off

Present this ad at time of estimate. Expires 9/1/11

Full Service
TREE EXPERTS
www.stevearborist.com

MEMBER ISA

Free Estimates
405-6940
Call Today

STORM RESPONSE

Lic'd. Bonded. Insured #PRITCTP890JR

The Mustard Seed Project

Building an Elder-Friendly Key Peninsula

September Third Thursday Community Forum

FALL PREVENTION: A PANEL PRESENTATION
on Home Safety, Nutrition, Medication (bring your meds for review), Exercise and the Franciscan Lifeline assistance device.

September 15, 2011
Brones Room
Key Center Library
10 a.m.



Transportation available!
Call 884-9814 for details.
Everyone welcome at this FREE program!

KPC MAIL-IN VOTER BALLOT

(Mailed ballots must be received by Sunday, September 25.)

Voting Instructions:

- Voter requirements:** Must be at least 18 years old by September 25. Must live or own property on the Key Peninsula.
- Mark the ballot by circling your choices in ALL four areas.**
- Write-in votes are welcome.** If possible please provide contact numbers.
- Cut out the Ballot, seal in envelope, include a KP property return address—** The return address must be a physical KP property. Ballots may be duplicated but only one ballot per envelope.
- Place stamp on envelope and mail to: KPC, POB 13, Vaughn, WA 98394—**Mailed ballots must be received by 3 p.m. Sunday, September 25.
- Drop-off Option:** You may drop off ballots at the Civic Center in the KPNews office by 3:00 p.m. Sunday, September 25.
- Optional survey question:** The KPC mission is to maintain and improve the quality of life on the Key Peninsula. How would you rate the Key Pen quality of life for 2011 year? _____ Please rate 1-10 with 10 the highest.



The Key Peninsula Community Council 2011 VOTER BALLOT Vote for all four Areas

Area 1—Zip code 98395 and 98329

Two (2) positions open

- Matt Wong

Write-in: _____ Phone: _____

Area 2—Zip code 98394 and 98329

Two (2) positions open

- Mary Blythe
- Audra Garcia
- *Danna Webster

Write-in: _____ Phone: _____

Area 3—Zip code 98349

One (1) positions open

- Chuck West

Write-in: _____ Phone: _____

Area 4—Zip code 98349 and 98351

Two (2) position open

Write-in: _____ Phone: _____

Write-in: _____ Phone: _____

(*) indicates incumbent

This ad paid by the KPC Elections Committee, 2011.

Peninsula Views EDITORIAL

Go ahead, take advantage of us

We admit it. We're providing something free to the public to get something back. We know the rule. You give to give, not get. But in this case we are hoping you will forgive us, and that we will benefit.

We want you to come away with something, too. Maybe a job, but if not a job, at least some great information.

Key Pen News is hosting a free job seminar this month. We've partnered with a sales and marketing professional who has 35 years of experience. Ed Brook will provide relevant information and walk us through the steps to success in a sales career.

Your gain is our gain, we hope. If sales is right for you, we hope you'll consider applying for a position in our sales department.

If you've ever thought of becoming a sales rep, attend this free seminar and find out if it's right for you. We'll be on hand to take your resumes and help with the application process.



Marsha Hart, editor

LETTERS TO THE EDITOR

Check those lights!

I see a lot of vehicles being driven on the Key Peninsula with at least one light not functioning.

I think it's time we all check our vehicle's head lights, tail lights, brake lights, and even the turn signals. Please take a minute or two to check all your lights-and maybe your windshield wipers, too- and

drive safely this fall. It may be a good idea, for your safety and the safety of others, to turn on your headlights (not running/parking lights) when driving at dusk, in inclement weather like fog and rain, or in the dark, shady areas of the KP Hwy and State Route 302.

Connie Renz
Gig Harbor

Letters Policy

The opinions expressed herein are the opinions of the writers and do not necessarily reflect the views of the publishers or staff. All letters to the editor must be signed and include a daytime phone number for verification. No anonymous letters will be published. Submissions are used on a space available basis and may be edited if used. THE KEY PENINSULA NEWS reserves the right to edit all submissions for length and content. Mail letters to: P.O. Box 3, Vaughn, WA 98394, or e-mail to news@keypennews.com.

The opinions expressed on this page are not necessarily those of the KP News. We neither endorse nor oppose issues or proposals discussed on this page and present these views for public information only.

FRANCISCAN HEALTH SYSTEM

++



J.R. Schmilski
Gig Harbor, WA

With the care of St. Anthony Hospital, I am healthy and active again.

St. Anthony delivers life-saving care to the Peninsula.

When J.R. Schmilski experienced heart failure, he found himself in the capable hands of St. Anthony physicians, who helped him build a treatment road map to get back to a healthy, active life.

"The Franciscan team brought me back from the brink, and now I have a new lease on life," says J.R., a chef who helps customers with meal ideas. "I would tell anyone that there is no better partner in caring for my heart than the team at St. Anthony."

Peninsula residents like J.R. have easy access to expert emergency services 24/7, sophisticated in- and outpatient surgery, complete outpatient cancer care, and much more at St. Anthony Hospital. Let us help you get back to living the life you love.

To find a highly qualified doctor near you, call our free referral line at 1 (888) 825-3227.

FOR ADVANCED MEDICINE AND TRUSTED CARE, CHOOSE ST. ANTHONY HOSPITAL.

11567 Canterwood Blvd. N.W. | Gig Harbor, WA | (253) 530-2000 | www.gigharborhospital.org

St. Anthony provides:

- 24-hour emergency department
- In- and outpatient surgery
- State-of-the-art cancer center
- Heart and vascular care
- Diagnostic imaging
- Physical, occupational and speech therapies
- Gastrointestinal laboratory

CATHOLIC HEALTH
INITIATIVES

St. Anthony Hospital

A Part of Franciscan Health System

SAVE ENERGY ▶ SAVE MONEY

It's Payback Time!

Going Green Rebates



5 ways to save money on your power bills, help the environment and get paid for replacing your old...

- ▶ **Windows**
 - Save \$6 per sq. ft. for window replacement (electrically heated homes & \$1000 max. rebate)
- ▶ **Ductless heating & cooling system**
 - We'll help you pay for an upgrade from your baseboard or wall heater (up to \$1500 rebate)
- ▶ **Penlight's FREE Duct Sealing Program**
 - Your electrically-heated home may qualify for free duct sealing (must use a qualified contractor)
- ▶ **Refrigerator**
 - We'll pick-up your old, energy-hungry refrigerator or freezer and send you a check for \$20 (must be working)
- ▶ **Heat Pump**
 - Have a qualified contractor install or upgrade your home to a high-efficiency air source heat pump and you may qualify for a rebate of \$400-\$1500

*rebates are subject to change at any time, please contact us for more details

 **Contact us to learn more 253.857.1516 or email energyspecialist@penlight.org Visit www.penlight.com**

Peninsula Light Co.
a mutual corporation • since 1925
The power to be...

(From 911, Page 1)

would pay for usage based on call volume. The South Sound 9-1-1 initiative is also being considered, which would help upgrade the KPFD's radio equipment.

Key Peninsula Fire Department Fire Chief Tom Lique says that a consolidation of the five dispatch centers would benefit the Pierce County taxpayers who currently have to pay for all five call centers. Also, a consolidation would cut down on communication issues caused by different radio frequencies used by different departments.

According to KPFD Division Chief Guy Allen, there was a communications problem concerning a report of a shooting incident last year. The problem prompted the KPFD and Pierce County Sheriff's office to meet to talk about addressing this concern. Allen cites outdated equipment as one of the problems. "If we don't upgrade soon, we could see more failures with emergency calls," Allen said.

Passing the South Sound 9-1-1 initiative is especially vital considering the federal narrow banding mandate that will put restrictions on VHF radios in 2013, Allen said. All radios operating at 150 - 500 MHz will be restricted to a signal strength of no more than 12.5 kHz. "That mandate will cost every user agency

significant dollars in order to comply," he said. "The problem with narrow banding is that it shrinks the service area of the radio signal. Every area where we currently have weak signal strength will likely have no coverage in 2013."

As a result of aging equipment, a transmitter tower was out of service for several days.

Currently KPFD can't afford to upgrade their radio equipment to comply with the federal narrow banding directive. However, Allen says the South Sound 9-1-1 initiative could help upgrade their equipment to a different frequency that is not affected by the narrow banding restrictions. Allen says that switching to a 700 MHz system is one option.

"You may ask why there hasn't been a new system put in place already," said Allen. "I can tell you there has been a plan in place for several years. However, because of the economy, the budget committee for the Pierce County fire dispatch recommended not funding it in an effort to minimize any user agency expenses."

According to Allen, there are also historical reasons why a consolidated 9-1-1 system has not already been in place. "Back in the early days most dispatchers did it themselves," said Allen. "In the Key Peninsula, the first dispatcher did it from home."

NW SPORTS
PHYSICAL THERAPY, INC.



Our Services Include:
• Orthopedic Rehab • Pre & Surgical Rehab • ACL Prevention and Rehab • Sports Conditioning & Training • Neuro Rehab • Back & Neck Care • Work Injury Rehab • Sports Injury Rehab
Call today... (253) 851-7472
4411 Pt. Fosdick Dr., Ste. 101
Gig Harbor, WA 98335

**SOCIAL SECURITY
DISABILITY**
ADVOCATE/REPRESENTATIVE

The Difference is Personal Service
95% of cases approved 2006-2010

MISSION POSSIBLE
Employment Services, Inc.

253-884-9205
OR
360-798-2920
www.mpes.net



EXECUTIVE SPORTS CHEF

JEREMY
INVITES YOU TO
EXPERIENCE THE

BACK9BBQ
AT HORSESHOE LAKE
GOLF COURSE

857.3326
WWW.HLGOLF.COM



Music inspires KP artist's own art form

Meyer has taken her live painting to a new level. She captures the energy of the live performances.

By Marsha Hart, KP News

It's the essence of the show, the energy of a performance that moves her to create. Once a landscape artist, Key Peninsula resident Tweed Meyer has evolved. She calls herself a documenter, capturing moments in time before it all changes.

"My mother is 82 and I live with her, and mom and dad were dancers and artists, and I know a lot of musicians," Meyer said. "I've gotten a lot of opportunities to sketch poets and musicians."

For the past 10 years she's been painting live performances, capturing the spirit of the shows. It really started to come together when Meyer began sketching and painting at Friends of the Holidays at the Swiss in Tacoma.

"I kind of dance into existence, catch

the movement and the feel of the band and its music, and that has evolved out of being a plein-air painter," she said.

Her degree in art is from the Northwest College of Art in Poulsbo. She said after years of school, years of painting and technique, she gets to turn it all off and just be present with the music.

Though she still considers herself an artist who documents the simplicity of small town, farmland and landscapes around the Key Peninsula, she took her style of painting live to a new level when she began sketching live musical performances.

She has become a regular part of the Words and Music house concerts on the Key Peninsula.

In July she traveled to Portland for a blues festival, and has also become a part of the Jazz Port Townsend Festival. She did live paintings of jazz musicians July 29 and 30 in the McCurdy Pavilion.

Last year Meyer attended the Centrum Jazz Port Townsend Festival on an informal level, and sketched and painted in the



Photo by Marsha Hart, KP News
Tweed meyer paints during Words and Music Show in Vaughn.

spontaneous drawings in the clubs," he said. "I like the idea that jazz is spontaneous music inspiring another spontaneous art form."

By working live, Meyer said it gives those in attendance a chance to watch art in action.

"I'm excited to be out to show people what it is to be a painter," she said. "Not many see the process. I show the process of painting."

Being part of the jazz festival was an exciting and humbling experience.

"I'm excited for this opportunity," she said.

Her exhibit of work was called Music in Motion.

"That's jazz, and for me that is what is most important, that I caught the energy. I take all my materials and get to play, the subconscious fills in the blanks."

For more information on Tweed Meyer, visit tweedmeyer.com.

This story originally appeared in our August online edition at keypennews.com.

clubs. Legendary jazz photographer Ron Hudson, who documented the festival for more than 30 years, was there. He passed away in February.

"I feel good knowing I am following in his footsteps, and that what I do is document," she said.

Gregg Miller, program manager for Jazz Port Townsend said Meyer is a good fit. "She had been here unofficially, doing

**MYR
MAR**
Myr-Mar Accounting Service, Inc.
ALL Taxes—Bookkeeping
R. Marvin Keizur, Accountant
13215 139th Ave., KPN 253.884.3566
mkeizur@aol.com


**Longbranch
Community Church**
www.longbranchchurch.net
Come and join us for
Interdenominational Services
Sunday Service 11:00 am
16518 46th St. KPS, Longbranch
253-884-9339
Fellowship Hall available for rental


**Ray's
Meat Market**
In Purdy next to "Local Boys"
Hours: 9-7 M-F, 9-6 Sat, 11-5 Sun
253 432 4241
Labor Day Special
FRIDAY—MONDAY
With your minimum \$30⁰⁰
purchase receive a **FREE** lb.
of Painted Hills Natural Hamburger
87% lean  2 lb. limit
You've tried the rest...
It's time to try the **BEST!!**
Open Sundays
Open Sundays Open Sundays Open Sundays
Open Sundays Open Sundays Open Sundays

Absolute Auto Care
would like to
Thank You
Care
for letting us serve you during these
difficult economic times.

- Brakes
- Tune-ups
- Air Conditioning Services
- Full Exhaust Services
- Interval Scheduled Maintenance
- Computer Diagnostics
- Suspension
- Engines & Transmissions
- Oil Change


Key-Pen
you moving!!

 ASE Certified Technicians
Professional Staff
BBB Members
Customer Referral Program

253 884 3431
(Just North of Key Center)

Key Center medical marijuana co-op under new management

By Danna Webster, KP News

The medical marijuana co-op in Key Center opened under a new owner and new management March 25. It has a new name, a new business ethic, new paint, new planters and new furnishings. The name is KPN Cross and it is one of four co-ops in the state with the Cross name. The original Cross location was started about two years ago by James Lucas in Tacoma. The four locations are Tacoma, Seattle, Lacey and Key Center.

The manager of KPN Cross is John Nason. He is appreciative of the Key Peninsula community, which he found to be very welcoming and he is grateful to report no issues of theft or break-ins. The Key Peninsula is familiar to him. His grandparents own property on Herron Island. One of the first contributions KPN Cross will make to the community is an on-going food drive started July 25. Members and the general public can drop-off food donations for the Key Peninsula Community Services and Food Bank. Nason managed a drop-off food drive previously for the Tacoma Cross co-op.

According to Nason, the KPN Cross is a non-profit business that pays taxes. The first fact Nason wants clarified is that the business is not a dispensary. It is a co-op that works with the same principles of any farmer co-op. In this case the producer of the cannabis product is a patient. When the patient grows the allowable amount of marijuana and that amount exceeds the patient's use, that excess can be sold to the co-op. The co-op sells to patients who are unable to grow their own product. "Dispensaries are illegal," Nason says. "A dispensary is usually for profit and they should control the product. We are not a dispensary."

The KPN Cross is a private co-op, for members only. The employees are all patients and are authorized for medical needs. All members are required to carry a tamper proof letter from their doctor authorizing them to use medical Cannabis; and a Washington state valid ID. The legal amount for a patient-farmer to grow is 24 ounces in 60 days. Like a food cooperative, the growers can bring in any extra amounts that exceed their personal needs.

The Key Center co-op serves about 40 members a day, which has doubled



Photo by Danna Webster, KP News

The medical marijuana co-op has been remodeled and has a new owner that upholds the interpretation of Washington state law. Manager John Nason says KPN Cross is just like any other co-op, and is not a dispensary of marijuana. He insists the non-profit business pays taxes and plans to be a good neighbor. KPN Cross will hold a food drive for Key Peninsula Community Services and Food Bank.

since they opened. Most of the members live this side of the Narrows Bridge. Nason describes the co-op as a good business that brings shoppers to Key Center businesses. As manager, he is working to build a good reputation in the community. He holds to exactly what the law

states. "There is no shadiness. This is an opportunity for good health. Not everybody needs narcotics. That is why people choose this. This is doing something natural," he says.

This story originally appeared in our August online edition at keypennews.com.

FREE DUCT SEALING

for Qualifying Homes

Over time, the duct work throughout your house can work its way loose. This leads to high energy bills, and poor heating and air circulation. PenLight members can receive free ductwork testing and sealing.



To see if your home qualifies, contact PenLight at **253.853.1392**

Peninsula Light Co.
a mutual corporation • since 1925
 The power to be...
www.penlight.org

1ST SATURDAY IN OCTOBER



Key Peninsula Farm Tour

1. Bee's Flowers
2. The Bee Lady & Barefoot Boys Garden
3. Blue Willow Lavender Farm
4. Creviston Valley Farms
5. Fiber Arts Show: Threads Through Time
6. Gentle Giant Meadows Ranch
7. Kauiki Farms
8. Morgan Creek Farms
9. Trillium Creek Winery

The Key Peninsula Farm Tour features a day of activities, music, and games for everyone who wants to stop and visit for some good old fashioned farm family fun.

FREE FAMILY FUN

KEY PENINSULA FARM TOUR
INFORMATION & DIRECTION GUIDE
 On the Website
www.keypeninsulafarmtour.com

www.keypeninsulafarmtour.com

Gospel Jam comes to KP

By Colleen Slater, KP News

Two opportunities for playing, singing, or watching and listening to Bluegrass Gospel music are making new sound waves on the Key Peninsula.

Longbranch Community Church hosted their first Bluegrass Gospel Jam Session with 17 musicians and a singing audience of over 24 in July. Participants from Port Orchard, Bellevue and Portland, Ore. helped local musicians kick off the event to be repeated every third Sunday evening each month. Bluegrass musicians of every skill level, singers, fans and families are invited to join in.

Pastor John Day, who has participated in such events for many years, has a songbook with lyrics and chords of over 100 traditional bluegrass songs.

Meanwhile, members and friends of the Lakebay Community Church, who had been holding gospel jam sessions on the third Sunday this past year, moved to the first Sunday due to a scheduling conflict with missions they are involved in.



Photo by Colleen Slater, KP News

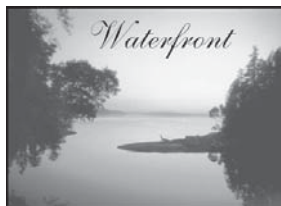
Local and out-of-town musicians join John Day, second from the left, in the first Bluegrass Gospel Jam in Longbranch.

Their sessions, labeled GCD for the basic chords used, start at 12:30 p.m. in the sanctuary.

Duncan Fisher and Hollie Lucas lead this group, with Gabe Fisher on drums. Beginners are welcome. They, too, have their own lyric and chord songbook.

Bring your instruments, music stands, voices, and enthusiasm to either or both of these events, Lakebay on Sept. 4 and Longbranch on Sept. 24.

For more information, call 884-3899 or 884-2732 for Lakebay, or (425) 492-4177 for Longbranch.



- Opportunity presented in 1600+ sqft, 2 bdrm, 2 1/4 ba. Daylight Rambler
- 1400 foot private drive
- Separate Studio w/half bath
- Just shy 4 acres w/private tidelands
- 100' low bank at mouth of Dutchers Cove
- Dock to provide spectacular views of Case Inlet, Herron Island and Dutcher's Spit.
- Newer Metal Roof
- New 3 bdrm septic
- Wrap around Deck
- Fireplace and woodstove

5808 Reynolds Bay Rd, KPN MLS#247532
\$399,950 www.johnscott.com/30555

Dan & Kelly Marks, REALTORS®
253 495 7565

John L. Scott
REAL ESTATE



2727 Hollycroft St. NW, Suite 201, Gig Harbor 253 858 7500

KEY PEN PARKS

www.keypenparks.com ~ 253-884-9240
answers@keypenparks.com

2012 Budget Hearings
Key Pen Parks will hold two public meetings to discuss Key Pen Parks 2012 Budget as required by RCW 84.52.020. The first meeting will be Mon., Sept. 26 and the second meeting will be on Mon., Oct. 24. The meetings will take place at Volunteer Park Annex beginning at 7:00 pm.

Indoor Soccer
Ages: 3-8
Location: Key Pen. Middle School Gym
Day/Date: Saturdays, 10/1-11/5
Fee: \$45
Time: Sess #1 9-9:50 (age 7-8)
Sess #2 10-10:50 (age 5-6)
Sess #3 11-11:50 (age 3-4)
Min/Max: 10/20 per age group

Fall Coed Softball
This recreational league will play Sun. starting Sept. 25th-Nov. 6th. Teams will play 8 games,

double headers and no umpires. Registration deadline is Sept. 13th. A non-refundable deposit will be accepted until Sept. 6th to secure your spot.
Location: Volunteer Park
Day/Date: Sun. afternoon starting Sept. 25
Time: No games start before 12:00 pm
Fee: \$230 per team
Min/Max: 4/8 Teams

3rd Annual All-Hallows Harvest Celebration
An evening of fun for the family! Join us for music, pumpkin judging and a costume contest. Music entertainment w/Billy Farmer and storytelling by the fire w/Karen Haas. Bring lawn chairs and roasting sticks for your S'mores! Rain or shine.
Location: Volunteer Park
Day/Date: Saturday 10/15
Time: 6-8 pm
Fee: **FREE**

Key Pen Parks
"The key to your next adventure"

GRAVEL, DRAIN ROCK & PEA GRAVEL

Key Peninsula, Port Orchard, Bremerton, Silverdale, Olalla and Gig Harbor

Now is the time **PAUL'S TRUCKING** Get-R-Done

Special **\$375⁰⁰**
Your Choice...
Per Load,
15 tons-30,000 lbs
Includes
Tax & Delivery
(no hidden fees)

Same Price Last 4 years

Call Today!
253 318-8166
a delivery charge may be added to areas not listed above

Help me – to help people in need, in our own local community.

I will donate the full proceeds of \$375.00 for the first load of rock, that is purchased from me in September, to the Food Bank in Lakebay. Simply make your check out to:

KEY PENINSULA COMMUNITY SERVICES
Attn: Penny Gazabat (253-884-4440)

Not all businesses that operate in our community, are OWNED & OPERATED by people in our local community.

Thank You,
Paul

1	3/8 Inch <u>Minus</u> Crushed Gravel Great for paths—wheelchairs, personal power chairs, & walkers 15 tons=30,000 lbs
2	3/4 Inch <u>Clean</u> Gravel 15 tons=30,000 lbs
3	1 1/2 Inch <u>Clean</u> Gravel 15 tons=30,000 lbs.
4	Pea Gravel 15 tons=30,000 lbs
5	7/8 Inch Drain Rock 15 tons=30,000 lbs
6	1 1/2 Inch Drain Rock 15 tons=30,000 lbs.
7	5/8 or 3/4 Inch <u>Minus</u> Crushed Gravel 15 tons=30,000 lbs.
8	1 1/2 Inch <u>Minus</u> Crushed Gravel 15 tons=30,000 lbs.

COMMUNITY WORKS

Submit calendar items to news@keypennews.com • Deadline is the 15th of the month

Now WIC openings

Pregnant or breastfeeding women or those with children under 5 can receive checks for healthy foods monthly. Apply at the Key Peninsula Civic Center on Thursdays. Call 884-3835 for an appointment.

Now GED classes

Key Peninsula residents may complete a basic skills education for college entrance, employment skills, or a GED. Class meets Tuesday, Wednesday and Thursday from 9:30-11:30 a.m. at the Home Fire Station. Evening classes (6 to 8 p.m.) are available at the TCC Gig Harbor Campus. Fall quarter begins September 19. For detailed class information, registration and orientation call Tracy Clark, 253-460-2356.

Now Swim times set

The following swim times have been set for the Stand by Me Easter Seals Pool on Vaughn Road. Monday, Wednesday, Friday water aerobics, \$4.25/swim paid monthly, from 10-11 a.m. Tuesday, Thursday open swim, \$4.25/swim paid monthly, from 8-9 a.m. Tuesday, Thursday water aerobics, \$4.25/swim paid monthly, from 9:20-10:20 a.m. To register, call Donna Daily, 884-4473.

Now PYO registration

The Peninsula Youth Orchestra is registering for the 2011/12 season. Beginners with no experience are welcome. Four levels of violin, viola, cello and bass, from beginners to advanced, will be taught to students in grades 4-12. The program balances nurturing lessons with rigor and compassion with the enjoyment of the benefits of making music in a string orchestra. Classes are open to all. Some scholarships and instrument loans

To submit an event

To submit an event for the Community Works calendar, please e-mail news@keypennews.com, or mail to P.O. Box 3, Vaughn, WA 98394. Briefs must be submitted by the 15th of the month.

are available. Paula, 253-534-5384, info@harborpyo.org, www.harborpyo.org.

Sept. 6, 12, 19, 26 Bloodmobile dates

The bloodmobile will be at Albertson's from 11:30 a.m.-6 p.m.

Sept. 6 Fall coed softball deposits due

Non-refundable deposits for the recreational coed softball league will be accepted through the end of today.

A meeting for the Fall Coed Softball League managers will be held at 6:30 p.m. at the Volunteer Park Office. The recreational coed league will play on Sundays (after noon) from Sept. 25- Nov. 6 with each team playing 8 games and, double headers with no umpires. Teams keep score for each other's games. Teams are taken on a first-come, first-served basis with a minimum of 4 teams and a maximum of 8 teams. Fee is \$230/team. Chad, 884-9240 or chad@keypenparks.com.

Sept. 7 Flag football deadline

Youth who want to play non-contact flag football must register by today. The emphasis for the league is sportsmanship, team-work and participation. Youth will be teamed by ages: grades 1-2, grades 3-5, and grades 6-7. Season begins Sept. 24 and ends on Nov. 5. with the Saturday games played at Schemel and Volun-

teer Parks. The \$65 fee includes a team t-shirt and the jamboree. There will be 4-8 teams. Chad, 884-9240

Qualified volunteer youth football coaches are needed and so are volunteer referees. Contact chad@keypenparks.com.

Sept. 8 Junk registration deadline

The deadline to participate in Junk in Your Trunk on Sept. 10 from 8 a.m.-1 p.m. is Sept. 8. Pre-registration is required; keypenparks.com under special events. Space is limited and spaces will be assigned for parking and to sell. Vendor fees are \$10/car, \$20/SUV or van, and \$30/truck or trailer.

Sept. 8 Fitness deadline

Fitness for Baby Boomer and Beyond (50+) is a one-hour workout for cardio, strength and flexibility. The class in on Mondays and Wednesdays from 9-10 a.m. at the Key Center Fire Station and is taught by Kim Sutherin, an International Sports Science Assn. Certified Fitness Trainer. The class includes homework training and costs \$50 for the session, which will run from Sept. 12-Nov. 2 (class on Sept. 12 at the Home Fire Station). Chad, 884-9240 or chad@keypenparks.com.

Sept. 9, 16, 23, 30 Skate night

Skate night for elementary and middle school students is held from 6-9 p.m. at the KP Civic Center. Entry is \$5 and includes skate rental and games. Fresh concessions are available. www.kpcivic-center.org or 884-3456.

Sept. 10 Second Saturday

The Friends of the Key Center Library

present "Avian Antics" presented by Ashley, the bird lady, at 11 a.m. 884-2242.

Sept. 13 & 22 Knit or crochet

Loving Hearts voluntarily knit and crochet chemo hats, baby items and blankets for non-profits in the community. They meet from 1- 3 p.m. at the WayPoint Church, 12719 - 134th Ave KPN. They also meet on Thursday, July 28 from 7-9 p.m. Yarn donations are always welcome. lovingheartsonkp@aol.com or Virginia, 884-9619.

Sept. 14, 15, 16 Emergency class postponed

Certified instructors requested a date change for the Key to Cooperation Volunteer Emergency Training Academy. The training is scheduled for Thursday, Oct. 6 and Friday, Oct. 7 at 8:30 a.m. Key Peninsula Lutheran Church. To register email: keypen884@live.com or call 884-4206 for information.

Sept. 15 Forum held

Mustard Seed Project hosts the Third Thursday Community Forum: Fall Prevention at 10 a.m. at the Key Center Library. A panel discussion on home safety, nutrition, medications (bring your own for review), exercise and lifeline will be held. 884-9814.

Sept 17 Lyme group

The Lyme Support group meets from 1-3 p.m. at the Key Center Library.

Sept. 17 Free Sales Seminar

Key Peninsula News will host a free

(See Community, Page 13)

(From **Community**, Page 12)

seminar with sales professional Ed Brook for anyone interested in gaining or enhancing their skills in sales. Key Peninsula Civic Center, Whitmore Room, 884-3456.

Sept. 20 Singers regroup

The Key Singers, a local community chorus, begin their 11th year of entertaining with upbeat music performances on the Key Peninsula and in nursing homes, etc. in nearby communities. All interested singers (no auditions necessary) are welcome to join with \$10 yearly dues (for music and scholarship for KP graduates.) The Key Singers sing all genres of music. First rehearsal is at 7 p.m. at the KP Lutheran Church. 884-5615.

Sept. 22 Speech contest

Key Peninsula Toastmasters will host their club level speech contest from 8-9 a.m. at the Key Center Library. Members of the Key Peninsula Toastmasters Club will present a 5 to 7 minute prepared "Tall Tale" or participate in a 1-2 minute Table Topic (off the cuff speech). The top two contestants in each contest will go on to the area level contest. The public is invited to attend and refreshments will be provided. Sharon Hulbert, 857-7753.

Sept. 24 Volunteer opportunity

National Public Lands Day is the nation's largest hands-on volunteer effort to improve and enhance the public lands. In 2010, 170,000 volunteers built trails and bridges, removed trash and invasive plants, and planted over 1.6 million trees. Join in for the 18th Annual National Public Lands Day event at the Rocky Creek Conservation area from 9 a.m.-noon.

Sept. 24 Bluegrass jam

Longbranch Community Church hosts a Bluegrass Gospel Jam Session

from 6-8:30 p.m. Find your instruments, tune them up and enjoy playing from the songbook with lyrics and chords of over 100 traditional bluegrass songs. Bring an instrument or music stand, or just come and sing. Pastor John Day, 425-492-4177.

Sept. 26 Park budget hearings

Key Pen Parks will hold two public meetings to discuss Key Pen Parks 2012 Budget as required by RCW 84.52.020. The first meeting will be Monday, Sep. 26 and the second meeting will be on Monday, Oct. 24. The meetings will take place at Volunteer Park Annex beginning at 7 p.m. 884-9240 or scottg@keypenparks.com.

Sept. 28 Indoor soccer deadline

Boys and girls, ages 3-8, must be registered by today to play indoor soccer from Oct. 1-Nov. 5 at the KP Middle School. Classes are held by ages: 3-4 years, 5-6 years, and 7-8 years and adult involvement is encouraged during sessions. Participants use scaled-down equipment and drills and games appropriate for their age and skill levels. There are 10-20 children per age group. Cost is \$45 which includes a t-shirt. Chad, 884-9240 or Chad@keypenparks.com.

Oct. 6 Earthquakes and volcanoes

The Longbranch Improvement Club will sponsor a talk on "Earthquakes and Volcanoes of the Pacific Northwest" at 7 p.m. at the LIC Clubhouse. Research by Dr. Jeff Tepper, University of Puget Sound, has centered on the dynamics of the molten rock (magma) that lies under the earth's crust, and how this helps generate both earthquakes and volcanic eruptions. This is a free event open to the public. ncarr44@centurytel.net.

WEEKLY EVENTS

Tuesdays TOPS #1325

Take-Off Pounds Sensibly meets at 9 a.m. at the Key Peninsula Lutheran Church. Free child care, fun and support are provided. 884-2554.

Wednesdays Lakebay writers

The Lakebay Writers meet from 1:30-4 p.m. at the Key Center Library. 884-3931.

Wednesdays Watermark writers

The Watermark Writers present a free writer's workshop from 5-8 pm in Vaughn. Call 253-778-6559 for information.

Thursdays Toastmasters

The Toastmasters meet from 8-9 a.m. at the Key Center Library. Join the fun and improve your speaking ability.

Thursdays Senior Society

The Key Peninsula Senior Society, aka Yesterday's Teenagers, meet at 11:30 a.m. for a potluck, fellowship and games at the Civic Center. All are welcome. 884-4981.

Saturdays Writers' guild

The Writers' Guild meets from 9-11 a.m. at the Key Center Library. 884-6455.

PUBLIC MEETINGS

KP Community Fair Association

Sept. 6, 6 p.m. in Roadhouse Restaurant VIP room; www.keyfair.org.

Peninsula School District Board

Sept. 8, 6 p.m. regular meeting at district.

KP Civic Center Board

Sept. 8, 7 p.m. in Whitmore Room, KPCC.

Key Pen Parks

Sept. 12, 7:30 p.m. at Volunteer Park Annex.

Fire District 16

Sept. 13 & 27, 6 p.m. in meeting room, Key Center Fire Station.

Key Peninsula Community Council

Sept. 14, 7 p.m. at Key Center Fire Station.

KP Citizens against Crime

Sept. 15, 7 p.m. at Home Fire Station.

LIC, dessert meeting

Sept. 21, 6:30 p.m. at Longbranch Improvement Club.

Key Pen Parks

Sept. 26, 2012 budget meeting, 7 p.m. at Volunteer Park Annex.

OFF THE KEY

Sept. 16 Play opens

Paradise Theatre shows "Bye Bye Birdie" on Fridays, Saturdays, and Sundays until Oct. 2. Call 851-PLAY or go to www.paradisetheatre.org for tickets.

Sept. 17 Recognition

Recognitions for First Responders is held from 1-5 p.m. at the United Methodist Church (7400 Pioneer Way in Gig Harbor).

Sept. 24 Golf tourney

The first annual "Doing the Key" Golf Tournament to benefit the KP Civic Center is hosted at Trophy Lake Golf Course in Port Orchard. Individual and teams are welcome. Cash and gift prizes awarded. The fee of \$125 includes dinner, awards banquet, and silent auction; dinner tickets may be purchased separately for \$30. For more info, including registration and sponsorship forms, www.kpciviccenter.org.



Key Peninsula Real Estate



Private, Secluded & Rainier View
Joemma Beach Estates home on 2.5 acres offers 4 bdrms & 2 ba in 1876 sqft. Addl. bld, 24x30 works as garage-shop-shed. Peak-a-boo Rainier view.
MLS #50680 \$185,000
Call... Bernie Wiles 253-514-0659



Waterfront Estate!
Two bdrm, 2 ba, on 5.42 acres. Large 2,664 sqft workshop/barn. Riding arena & fenced pasture. Land + views + timing = Opportunity for you!
MLS #181691 \$279,950
Call... Donna Lester 253-606-8480



Move in Ready!
2282 Sq ft on 3.8 acres close in Key Peninsula. 2 car attached garage—plus 2 car detached shop.
MLS#196798 \$269,900
Call... Cindy Barker 253-405-4779



Beautiful No Bank Waterfront
4 bedrooms, 3 baths with new bulk head and guest cottage at water's edge. Open fir, plan gourmet kit. Water & Rainier View. Come Live the Dream.
MLS #239392 \$649,000
Call... Mavi MacFarlane 253-203-8499

Key Peninsula Real Estate, LLC
11607 SR 302
Gig Harbor WA 98329
Phone: (253) 853-7400
www.keypeninsulare.com

EXCLUSIVELY PRESENTED BY

Windermere Real Estate



LONGBRANCH \$60,000
Secluded & private 5 acres surrounded by nature where you can watch wildlife in its own habitat. If you enjoy fishing, Case Inlet is nearby & State Parks are a few minutes away from camping & more. 2 other 5 acre parcels available.
Dottie Mazza
253-857-3304 #251247



BURLEY \$64,500
Nice building site with possible Mt Rainier views. Backs to a greenbelt. Power & water at the corner of property.
Andee Bemrose
253-857-3304 #197726



LAKEBAY \$89,000
Excellent breathtaking views of the Olympic Mountains, Case Inlet, unobstructed for many years to come. Mobile needs floor work & cleanup. Excellent deep well so lots of water. Major value in the land, well & septic.
Bill Poch
253-857-3304 #253970



HERRON ISLAND \$125,000
Perfect getaway summer or winter on over 1/2 acre. Enjoy morning coffee on this wrap around deck w/a view. This daylight cabin has hwdw floors, vaulted ceilings & skylights. New plumbing, 200 amp service, windows & much more.
Dottie Mazza
253-857-3304 #192909



LAKE HOLIDAY \$159,900
Beautiful updated home in gated Lake Holiday community. Remodeled kit., open layout, heat pump for cooling, newer laminate, roof, plumbing & dbl pane windows. Outbuilding for storage or shop. Landscaped yard w/just the right amount of trees. Sits back from road against a green belt.
Mike Edmonson
253-857-3304 #199619



LAKEBAY \$175,000
Great opportunity to own a stunning rambler on acreage. Ceramic tile & wood floors throughout. Landscaped yard with mature trees on about an acre of lawn. No need for a tool belt here, this home is move in ready! Close to schools & 2 salt water State Parks.
Andee Bemrose
253-857-3304 #256943




GIG HARBOR \$279,950
Pleasures of Horse Head Bay, 80 ft of no bank waterfront. Only 4 miles to the City of Gig Harbor. Land is one acre of gently sloping rural terrain. Close to neighbors but away from the hustle & bustle of busy roads.
Bill Poch
253-857-3304 #224989



CARNEY LAKE \$570,000
Country Living at its best, great house with giant rooms & open ceilings, huge master suite on the main level including 5 pc bath & 10 ft ceilings, gourmet kitchen, gas fireplace, & more. All this on 22+ acres with a creek that runs through it.
Larry Bentley
253-857-3304 #111663

Windermere Real Estate-Key Realty 11615 SR 302 NW
Gig Harbor 253-857-3304 windermerekeypen.com

Looking to Rent?



Look no More!

We've Got You Covered...

Key Peninsula 3 bedrooms
Gig Harbor or
Port Orchard 4 bedrooms


Rents
from
\$1200-\$1600

Just Give Us a Call!

LZ Property Management, LLC
888-4-2076
Brandy Ellzey—Owner/Designated Broker
15510 92nd St. KPN
PO Box 688
Wauna, WA 98395

For Current Available Rentals, please visit:
lpropertymanagement.managebuilding.com

Point Richmond Rambler



- Well maintained, 2,003 sqft., 3-bedroom, 2 bath home on .37 acres level lot.
- Cathedral ceilings w/ recessed lighting & ceiling fans.
- Backyard fenced complete with shed & play set.
- New wall-to-wall carpeting.
- RV Electrical hook-up conveniently located in the laundry room.
- Hardwood Kitchen floor and plenty of counter space.
- Breakfast bar provides extra seating.
- Natural gas fireplace with glass door.
- Versatile bonus room and office are both adjacent to the dining room and family room.

13712 13th Ave. NW MLS#176294 \$319,000
www.johnlscott.com/90024

Chip & Tracy Butzko, REALTORS®
253 617 9671
John L. Scott REAL ESTATE
Gig Harbor
2727 Hollycroft St. NW, Suite 201, Gig Harbor 253 858 7500

Thru August 2011
Key Peninsula Real Estate

MARKET REPORT

NON-WATERFRONT HOMES REPORT

Homes for Sale	162
Average List Price	\$257,898
(price per sq ft)	\$128
Average Days on Market	188
Homes Sold (ytd)	119
Average Sold Price	\$170,101
(price per sq ft)	\$103
Average Days on Market	141
Properties Pending	45

WATERFRONT REPORT

Homes for Sale	43
Average List Price	\$476,857
(price per sq ft)	\$246
Average Days on Market	158
Homes Sold (ytd)	17
Average Sold Price	\$514,253
(price per sq ft)	\$228
Average Days on Market	197
Properties Pending	9

LAND REPORT

Land for Sale	227
Average List Price	\$105,101
(price per acre)	\$74,470
Average Days on Market	447
Land Sold (ytd)	19
Average Sold Price	\$75,682
(price per acre)	\$68,513
Average Days on Market	339
Land Properties Pending	5

This report is provided as a generic reference only...as all properties are unique. Contact a REALTOR® for specific pricing information.

Key Peninsula Market Report provided by:




Tracy Butzko
253 617 9670
tracybutzko@johnlscott.com

John L. Scott
REAL ESTATE
Gig Harbor

HOME

EXCAVATING & DOZING



NATURE TRAILS,
BEACH ACCESS,
SITE CLEARING & PREP.,
LOGGING,
ROCK WALLS & STEPS,
DRAINAGE SYSTEMS,
ROAD GRADING,
DEMOLITION,
STUMP REMOVAL,
GRAVEL &
TOPSOIL DELIVERIES,
& MUCH MORE.

DIFFICULT JOBS ARE OUR SPECIALTY!

(253)884-5798

High Tide...Always



- Peaceful and private this 2 bdrm, 2 1/4 ba., 1800 sqft 2 story home on .56 acres is steps from Whitman Cove.
- Boat Dock
- Upgrades include Fire Sprinkler, Alarm, Electronic Air Filter and Security Systems
- Dead End Street
- RV Parking
- Huge Entertaining Deck
- Storage, storage and more storage!

19517 Whiteman Cove Rd, KPS MLS#134031
\$239,950 www.johnlscott.com/62703

Dan Bennett, REALTOR®
253 377 1818

John L. Scott
REAL ESTATE
Gig Harbor

2727 Hollycroft St. NW, Suite 201, Gig Harbor 253 858 7500



SOLD FOR SALE

We can put your home in front of more than 10,000 potential buyers... you only need one.

Give Chip a call... Lets make a plan.

Key Pen News... 253 617 9671

RE/MAX®

Town and Country



Remodeled Cabin with Western Water Views, Owner Financing

Herron Island
\$119,500 MLS# 219441



Low Bank Waterfront Cabin, Western Views, Moorage, Tidelands

Herron Island
\$249,000 MLS# 250972

The Herron Team
Partners in Excellence

www.berronteamrealestate.com



Janette Weister
o 253-857-1846
c 253-355-0495
HerronTeamHomes@gmail.com



Dallas Amidon
o 253-857-1827
c 253-606-0972
Remax.Dallas.A@gmail.com



QR Code
Scan with your smart phone for more listings

Good to brush up on basic first aid techniques

Recently I attended the Key Peninsula Fire Department's First Aid & CPR Training Class in Key Center. I did this for two main reasons. The first was that it's part of my self-imposed Household Emergency Preparedness Plan, and the class was on a checklist along with things like "bottled water" and "first aid kit." So now I can check the class off, which is pretty dang exciting. The other, more important reason is that I was tired of being one of those people that just sort of looks around like an idiot when a medical emergency occurs. I mean, I'm good at looking like an idiot, but in this particular circumstance I wanted to move beyond that accomplishment and actually be able to help someone in need of medical attention. So I signed up and went, and highly recommend the class.

Mark Adams presented the class and was an engaging instructor with years of hands-on military and fire department experience as a responder. He made a comfortable learning environment, and it's amazing how easy a lot of these procedures are to do. The trick is to know what

to do in the first place. For example, when do you call 9-1-1? I mean, we all know you call "in an emergency," but when does a situation become an emergency? What's your role when you're standing there and an emergency happens in front of you? Some situations are obvious, but many are not. Survival often comes down to how you react in the first minutes of an emergency. And there are just lots of general things that are not common knowledge. What's an EpiPen and how is it properly used? What do you do when a person stops breathing? What's an automated external defibrillator (AED), what's it do, and how should you use it? How do you stop a bleeding wound? What do you do if, say, you cut your finger off with a saw blade or knock a tooth out?

The class also covers CPR. It was good to get a refresher in CPR. I'm 45, so back when I was in school and we learned CPR in gym class, it was hard to learn too much. The "class" was just a bunch of

Kevin Reed
Here's Something



socially hyper-focused kids sitting around, dreading their turn on the dummy while they watched, in horror, as the instructor wiped down the dummy's mouth with alcohol in between students. I mean, that's pretty much all I got out of that training. I took CPR again when my wife was pregnant six years ago, but forgot pretty much all of it. So it was good to take it again, and this time I learned more about breathing for a person and using a mask to prevent the spread of disease both from the victim and to the victim. This was also the first time I learned CPR in the context of the emergency situation and calling 9-1-1, so you learn when to start CPR, when to call 9-1-1, how long to do CPR and the components of CPR, when to

use the AED, and so on, in the context of the emergency that you may find yourself in. I found that context to be very useful. The student gets all the necessary steps to maximize the possibilities for success in their efforts – which, of course, is the objective. Traumatic emergencies are the No. 1 killer under the age of 40, and this class covers responding to them in detail. They also cover environmental emergencies in our area like hypothermia. You get a handy book that contains everything covered in class, broken up into easily navigated chunks of information. The Fire Department prefers at least six people a month to sign up for the class in order to hold it. You don't need to be part of a group, and anyone from middle school on up is welcome to attend. Being knowledgeable of how to respond to emergencies also makes us all more aware of emergency conditions, which helps to avoid accidents in the first place. If you're not sure what to do in an emergency, sign up for this class. We'll all be safer, and "minutes mean life!"

Home Equity Lines of Credit

1.99%^{APR*}

intro rate for 6 months

No closing costs! **

after 6 months, rates as low as 4.49%^{APR*}

soundcu.com | 253.383.2016 | 800.562.8130

*APR is Annual Percentage Rate. All loans are subject to credit approval. Your rate and credit limit will be determined based on individual creditworthiness including income, debt-to-income ratio, and employment. Verification of income may be required. A \$345 early closure fee is applied if the loan is closed within the first 24 months. Maximum loan amount is determined by the amount of equity in your home. Equity in your home is based on appraised value. The APR includes only interest and no other costs and is variable based on the value of an index. This index is the Prime Rate published in the Wall Street Journal and is current as of 8/1/2011 and could change at any time. Sound will use the most recent index available to us as of 5 days before the date of any change to the APR. To determine the APR which will apply to your account, a margin will be added to your current index rate. In no event will the regular Annual Percentage Rate be less than 4.49% or more than the lesser of 18% per annum or the maximum rate allowed by applicable law. Borrow up to 80% of appraised value for Home Equity Lines of Credit. Must be 18 years of age to qualify for a loan. **Except appraisal if needed. Estimated appraisal cost is \$450. 1.99% APR introductory rate available for six months after the loan is funded. At the beginning of the seventh month, your regular rate will go into effect. Home Equity Line of Credit has a variable rate. Offer subject to change at any time.

SOUND
CREDIT UNION

State Statute in contradiction with federal law

An Initiative passed by the voters in 1998 and codified as RCW 61.51A allows for the possession and use of "medical marijuana". Examples cited in the statute for its intended application are to control chemotherapy-related nausea and vomiting in cancer patient; AIDS wasting syndrome; severe muscle spasms associated with multiple sclerosis; epilepsy; acute or chronic glaucoma; and some forms of intractable pain. It is supposed to be limited to "qualifying patients with terminal or debilitating illness" who cannot obtain relief by any other means.

The State Legislature amended the law in 2007 to allow a "designated provider" to assist (by selling the marijuana to the documented sick person). The law requires documentation at all steps.

The statutes do NOT repeal the Uniform Controlled Substance Act, which still prohibits the sale, purchase, possession, and use of marijuana. It only allows for a very narrow exception for a state law for a tightly controlled medical use.

The problem with such a state statute is that it conflicts with federal statutes, which

take precedence over any state laws. Under federal law, medical use is illegal, with no distinction made from gang-related street use or drug houses.

It is irresponsible for our legislators to allow these statutes to remain in effect. A citizen will read the statute believing that medical use is legal, when the Feds may still haul him off for a long stay at the old Grey Bar Hotel. This isn't much of a threat for a terminal cancer patient, but it holds real consequences where the "intractable pain" is in fact only a stubbed toe, or a profit motive is involved.

Supporters argue that the Obama administration has a policy of NOT enforcing marijuana laws. Opponents cite where more enforcement has occurred under Obama than any other recent administration. Administrations change with each election. Existing law prevails, federal law controls.

Dozens of medical marijuana "dispensaries" have surfaced throughout Pierce County. Tacoma has even "licensed" them.

Rick Sorrels Pragmatic Sophist



Providers are gambling for big stakes. They need to recognize the need to have an attorney on retainer, bail pre-arranged, and vacation plans made.

In December it got even more interesting. Attempting to plug a \$4.6-billion budget deficit, the Washington State Department of Revenue (DOR) realized that it had not been receiving sales tax and B&O tax revenue from medical marijuana sales, and sent notices to the providers/dispensaries reminding them to file their tax returns.

DOR recognizes that "prescription" medicines are exempt from sales tax, but that marijuana, by law, is NOT a prescription medicine, and it is illegal for doctors to write prescription for a controlled substance. Marijuana is still subject to the Uniformed Controlled Substance Act.

In 1927, the US Supreme Court ruled that an obligation to pay taxes exists even when the income was obtained illegally. This ruling led to the imprisonment of Al Capone.

If tax returns are filed for illegal gains, then an audit will reveal names, dates, sales amounts, etc, i.e., everything needed for an ironclad criminal suit by the Feds. Convictions will result, with or without tax returns. Tax returns just make it easier.

All legislators swear an Oath of Office to "support and defend" the Federal Constitution and laws. Violating that oath subjects them to recall. "Licensing" an illegal activity exposes government employees to arrest.

If change is to occur, it MUST be implemented by the Federal Congress. Ineffectual posturing at the state and local levels is a waste of time, violates the Rule of Law, and promotes anarchy and the downfall of our civilization.

With a long enough lever placed in the right location, you can move the Earth. If you stick it in the muck instead, all you get is a mucked up mess, like we have now.

FREE SEMINAR

A Career In Sales: *Is it right for you?*



Key Peninsula News
invites you to find out during a free seminar with
Ed Brook, an advertising sales professional.

If you have ever thought of a career in sales, or think it could be a way to earn a little extra cash, come find out if you have what it takes to be successful in sales.

September 17
1 p.m.

in the Whitmore Room at the
Key Peninsula Civic Center
Vaughn

Light refreshments provided.

Sponsored by Key Peninsula News



FREE energy-efficient products from your local utility!*

- Receive a complimentary installation provided by your local utility, including:
- ENERGY STAR® compact fluorescent light bulbs (CFLs)
 - Energy-saving showerheads
 - Installation performed by a trained expert to ensure best placement
 - No additional obligation

Installers will be in your neighborhood soon. If you would prefer to schedule your installation, call 1-888-553-SIMPLE or visit www.SimpleStepsNW.com/utility/peninsula.

Peninsula Light Co.
a mutual corporation

* This no cost offer is valid while supplies last. Peninsula Light customers with an electric water heater may qualify for the shower heads, limit two per household. This program is sponsored by Peninsula Light and is only available to Peninsula Light customers.

FD 16 CALL LOG

A summary of calls for FD 16 for July 15 through August 12

Total Calls: 146
EMS: 99
Fire/service: 14
Other: 33

July 16

A 47-year-old Port Orchard man was vigorously exercising when he became dizzy and short of breath. The man started a new medication recently which is believed to have played a role in dramatically dropping his blood pressure while working out. Volunteer firefighters witnessed the near-collapse of the man and quickly assessed his condition. Key Peninsula Medic One transported him to a local hospital for further evaluation.

July 17

A Minter area man passed away after returning from a three-day stay in a hospital. The man had just gotten three-way heart by-pass surgery. KP Medics attempted to save the man but were unsuccessful.

July 21

The KP Fire crew wrestled with three 9-1-1 medical calls in a forty-five minute period that quickly taxed their resources. A 43 year old Home woman called for help when she became short of breath. A Key Peninsula Medic One unit began transporting her when the family of a 26 year old Lakebay man called 9-1-1 because he had consumed a fair quantity of alcohol and drugs. A second KPPD medic team was preparing to transport him when a 55 year old Longbranch man

needed medical attention for excruciating abdominal pain. A mutual aid ambulance from Gig Harbor responded to transport the third patient.

July 23

Water Rescue teams from Key Peninsula, Gig Harbor, Anderson Island and Tacoma fire departments initiated a search of Carr Inlet following the report of a flare sighting by a Fox Island resident. The rescue craft, along with a Coast Guard helicopter, performed an extensive search of the area but found nothing. The search was called off due to darkness but resumed at first light. In the morning, the Coast Guard helicopter spotted an overturned kayak south of Herron Island in Case Inlet. Key Peninsula Fire's rescue team launched their water craft and recovered the kayak. It turned out to be a derelict vessel. It was towed to a State Park for removal.

July 25

Key Peninsula Medic One responded to a Wauna residence where a 47 year old male cut his finger on buried glass while digging in the yard. He had a superficial laceration to one finger tip, but he was panicked by the blood. He was given a band-aid and advised to have the cut evaluated at a clinic and have his shots updated. He was going to get a ride from a friend.

July 29

A 69 year old Lakebay man and his wife

arrived at the Home fire station seeking emergency medical assistance for the man, who was experiencing symptoms consistent with a cardiac event. The man was treated and transported to St Joseph's Hospital in Tacoma.

July 31

A 50-year-old Lakebay man was found dead in Longbranch hours after his motorcycle left the road. The man and his motorcycle were found in the brush at a sharp turn in the road. It is assumed that the man failed to negotiate the sharp turn and ran off the road, striking a power pole support cable.

Aug. 3

Firefighters were called to the home of a 53-year-old Lakebay woman where she was stuck on the roof. The woman climbed to the roof to make repairs. When she tried to exit the roof, she realized she couldn't reach the ladder. Firefighters quickly deployed a ladder from the fire engine, and the slightly embarrassed homeowner climbed down without injury.

Aug. 4

A resident in Home checked his brush fire on Tuesday to assure that the fire he had burned on Monday was completely out. On Thursday a neighbor to the north was alerted when a tree near her house went up in flames. She called 9-1-1 bringing firefighters who discovered the ½ acre brush fire that had been burning slowly for the past couple days. The fire was ex-

tinguished with help from Gig Harbor firefighters.

Aug. 5

A 36 year old Lakebay man experienced pain and itching in his arm and was treated and transported to St Anthony Hospital in the early morning hours. The man had broken his arm a week earlier and had a cast on it, possibly adding to his pain and irritation.

Aug. 7

A 15-year-old Lakebay boy was pistol-whipped by his stepfather during a family dispute. The youth was treated and transported to a Tacoma hospital.

Aug. 8

Unbeknownst to mom, a 3-year-old Wauna girl snuck into her purse and took a gulp of her Visine eye drops. Several hours later, the mother noticed the child was markedly groggy, discovered the probable Visine ingestion and called the Poison Control hotline. The mother followed that conversation with a call to 9-1-1. Paramedics arrived and found the child was lethargic, had difficulty focusing and a slightly low blood pressure. A consultation with Poison Control revealed that these findings were consistent with the ingestion of eye drops. Key Peninsula Medic One transported her to a Tacoma children's hospital for further treatment.

(See Fire, Page 19)

24-7 Home Surveillance
Remote Accessibility
via PC or SmartPhone
No Monthly Fees!!!
Starting as low as...
\$165⁰⁰ One Time Fee
Includes: Camera, Software, Installation (hardware additional) & training!
KeyPen Consulting
253 **509 7060**
www.keypenconsulting.com

Great Service-Great Food-Great Times **884-1300**

Roadhouse R on the Hill

Happy Hour
4-6 & 8-12
2x the Fun!

Live Band
50/50
Friday, September 16
8 pm - Midnight

For more info call 884 1300

9016 154th Ave Ct KPN Lakebay 98349 roadhouseonthehill.com

LAKEBAY ROOFING

Pierce, Kitsap, and Mason Counties

- RESIDENTIAL •
- RE-ROOFING •

SHAKE • TORCH DOWN • METAL COMPOSITION • CEDAR • SHINGLES
FREE ESTIMATES

884-2186 • Tom Rolfzen- Owner
WN. ST. CONSTRU.REG.LAKEBR1022R1

(From Fire, Page 18)

Aug. 10

A 17-year-old Lakebay youth was driving an SUV that rolled several times in the 700 block of Key Peninsula Highway South, ejecting him from the car. He and his 21-year-old passenger were transported by Key Peninsula Medic One units to a Tacoma trauma center with serious injuries. No drugs or alcohol were suspected, but high speed was likely involved. Whiteman Road remained closed for over two hours while the Pierce County Sheriff's Office Traffic Division investigated.

Aug. 12

A man and woman traveling from Oregon were touring the beautiful Key Peninsula when the 77-year-old man experienced chest discomfort accompanied by nausea and vomiting. His wife pulled over and sought directions to a hospital from a nearby homeowner who directed them to the Home fire station. At the firehouse, paramedics assessed the man and suspected he was suffering a heart attack. Key Peninsula Medic One transported him in the priority mode to a Tacoma emergency cardiac hospital.

SHERIFF'S BLOTTER

A summary of calls for Pierce County Sheriff's Department for July 20 through Aug. 16

July 20

7900 block of SR 302, Wauna: Burglary: Suspects entered a home while it was being remodeled and took a Craftsman pressure washer. No suspect info.

July 23

Red Barn Youth Center, Lakebay: Burglary, vandalism. Suspects entered through un-secured window and cut electrical wiring.

July 24

10700 block of 132nd St.: Auto theft. White fiberglass cargo trailer was taken. No suspects.

July 25

14100 block of Goodrich Drive: Burglary. Sometime between 6:30 a.m. and 2 p.m. suspects used a ladder to gain access through a second story, unlocked window. Two rifles and a handgun were taken from

upstairs; nothing was taken from lower level. Padlocks cut off detached garage. Tools and an air compressor were stolen.

14000 block of 134th St.: Fraud. Victims reported purchase of a residence through a private contract with a 63-year-old Gig Harbor man. Victims subsequently found liens on the property. The suspect has an extensive history of fraud and identity theft.

20300 block of 20th St. KP S, Lakebay: Destruction of property. Suspects pushed over Thuja evergreen trees and destroyed a drip system.

July 27

Camp Coleman: Destruction, damage, vandalism: The sign was torn off and boats from the front gate were vandalized.

July 29

1300 block of Russell Road, Lakebay: Burglary. A brass bell in the entrance to Camp Gallagher was stolen, and a pipe connecting showers to the boiler was also taken. Estimated cost is \$3,000. No suspects.

July 30

11600 block of Bliss Cochrane Road: Burglary. CDs, speakers and an antique cast iron bell were taken from a chapel.

Aug. 4

10700 block of 130th St. N.W.: Burglary.

Suspects broke in through a window at the back of the home and stole a TV, jewelry and a computer. No suspect info.

Aug. 8

2000 block of 202nd Ave. KP S, Lakebay: Burglary. Suspects entered an unlocked vehicle in the driveway and took mp3 player and flashlight.

Aug. 10

17400 block of 88th St., Longbranch: Vandalism. Tires were moved to the middle of an airstrip on private property. The placement of the tires could cause a fatal accident at end of runway, according to property owner. No suspect info.

Aug. 15

14500 block of 93rd Ave. N.W.: Theft. A red homemade trailer was stolen. No suspect info.

Aug. 16

8600 block of SR 302 N.W.: Burglary. Suspects entered a home through an unlocked window and exited through the door. A Nintendo, Wii and Dell computer were stolen.

18200 block of S. Vaughn Road: Burglary. A window next to the front door was broken. Suspects entered and went through multiple rooms. Only a few things missing, cell phone, watches and old passports. No suspect info.

Farm Tour and Fiber Arts Fest set for Oct. 1

\Staff Report

Key Peninsula farmers are weeding, harvesting, and grooming those farm animals in preparation for the annual Key Peninsula Harvest Fest and Farm Tour. Visitors from all around the Puget Sound will converge on Key Peninsula Highway Oct. 1 as they make their way from Blue Willow Lavender Farm, The Bee Lady and Barefoot Boys Gardens, Bea's Flowers, Creviston Valley Farms, Gentle Giant Meadows Ranch, Kaukiki Farms, Morgan Creek Farm and Trillium Creek Winery.

From hay rides to honey, lavender to jellies and jams, farm animals and plenty of smiles, the Key Peninsula Harvest Fest and Farm Tour provides a day on the

farm and kicks off the fall season.

Also on the farm tour is the Fiber Arts Fest "Threads Through Time," at the Longbranch Improvement Club. This free event will showcase all manner of things that can be done with fiber, modern to traditional uses. Special guest Cheryl Samuel, author of "The Raven's Tail," and accomplished weaver, will be on hand to answer questions, and her students will be demonstrating.

For more information on the Farm Tour, visit the Facebook page, 2011 Key Peninsula Harvest Fest Farm Tour. For more information on the Fiber Arts Fest, visit the Facebook page, 4th Annual Fiber Arts Festival.

Get your Propane Here!

Drive Thru Feed

Spring & Summer Hours!!

8-6 M-Sat, 11-6 Sundays

Thanks all 300 of you for showing up at our Customer Appreciation Day
The Winners of 2000 lbs. of Feed are:

Debbie Olson	400 lbs
Bob Moore	200 lbs
Char Bantula	200 lbs
Lyn Apodaca	400 lbs
John Lofdahl	600 lbs
Tanja McMurrey	200 lbs

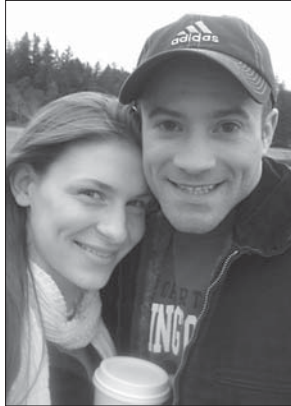
~Next year promises to be bigger!!~

SWAP MEET & FARMERS MARKET
Sign in early for a good spot.
Open to All
Sat. 8am-6pm Sun. 11am-6pm

September 11th @ NOON
come see
Chuck Kraft
Free Class on Difficult Horses and Ground Manners
Sunday September 11th @ NOON

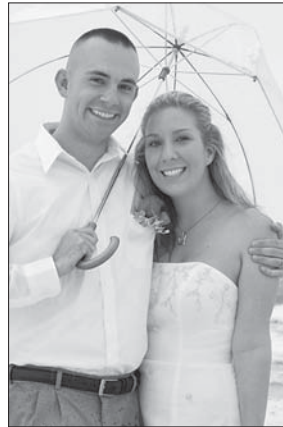
Easy to Find!!

16915 121st
(Corner of Wright Bliss & HWY 302)
KPN, Gig Harbor, WA
253-884-3386



Engagement
Webster and Dailey

Stephen and Christine Webster of the Key Peninsula are pleased to announce the engagement of their daughter, Carolyn Rose Webster to Thomas Benjamin Dailey, son of Carol Seeley of Shelton and Bob Dailey of Port Orford, Ore. Carolyn and Ben met while working at the Gig Harbor Fred Meyer Marketplace and plan to live in Tacoma following their November 2011 wedding.



Wedding
Knisely and Coulter

Blair Knisely and Rex Coulter were married on July 16th on the beach in Destin, Florida. The bride is the daughter of Mark and Cindy Knisely of Gig Harbor, Washington. The groom is the son of Jan and Gary Glenn of Boise, Idaho. The bride attended Boise State University. The groom is a graduate of Gonzaga University and is a 2LT in the Army. They are currently stationed in Fort Rucker, Alabama where Rex attends helicopter flight training.

Submit an announcement

To submit a wedding or engagement announcement, send information to news@keypennews.com. All announcements are paid, and payment must be received prior to publication. Fees for announcements are \$20 for up to 200 words, a \$5 for a photo. Add an extra \$10 for full color. Deadline for announcement submissions is the 15th of the month prior to publication.



The past two years have been hard and many are hurting.

This is the time and place for people to join together and lead America out of this economic mess.

WayPoint Church is offering a *Financial Peace University* class that will teach you God's way of handling money. Together we'll climb out -- one family, one church, one community at a time.

Come to a Free Preview Sept 4th, 6pm or Sept 11th, 12:30pm

WayPoint Church 12719 134th Ave KPN, Gig Harbor 853-7878

THEGREATRECOVERY.com

Friday Night Skate is back!
Opening day: Sept. 9th!



Join us at the Key Pen Civic Center for skating, games & more!

For all kids elementary through 8th grade
6:00 to 9:00pm • \$5

Kitchen open with burgers, fries, pizza, candy, soda and other treats.

• Host your birthday party at Skate Night •
All-inclusive party package.

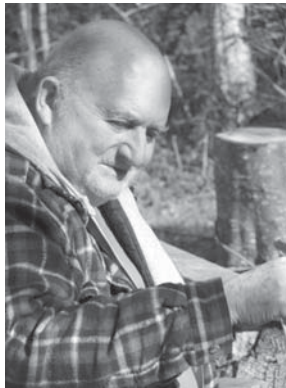
Call 884-3456, or visit www.kpciviccenter.org
Facebook & Twitter

Robert E. Downen

LTC Robert E. Downen, 80, a Key Peninsula resident since 1977, died peacefully in his sleep on Aug. 8 at St. Anthony Hospital in Gig Harbor.

Bob was a retired Army officer and West Point graduate, Class of 1954. He served his country throughout South America and Southeast Asia until his retirement in 1977. Since then his children and grandchildren have been his first priority. He was a strong supporter of the Boy Scouts, Wounded Warriors, and Toys for Tots. He loved astronomy, history, wilderness exploration, fishing and the mountains and he passed his passions on to future generations.

He is now reunited with his wife, Mary Ann, who passed away in 2001, but will be missed dearly by his son, Mark Downen, Longbranch.; daughter, Lynne Shutters, Pennsylvania; grandchildren, Laura, Ami, Ian, Shane, Genevieve, Fiona, and Daniel Downen; grandchildren, Melanie and Kayla Shutters.



A graveside funeral service and interment was held at Haven of Rest on Aug. 16 at 2 p.m. Friends and family are encouraged to sign his guestbook; please visit www.havenrest.com.

Howard Gordon Kingsbury

Howard Gordon Kingsbury was born Oct. 30, 1918, to Gordon and Eva Kingsbury in Tacoma, Wash. He passed away July 14, 2011 in Spokane. He was raised in Vaughn, graduated from Vaughn Union High School in 1937, and from Beutel Business College in Tacoma in 1939. During World War II he served in the U.S. Army. After the war, Howard enrolled at the University of Washington and graduated from the College of Economics and Business in 1949 with a Bachelor of Arts degree in Transportation. He was employed for 11 years in various positions by the Chicago, Burlington, and Quincy Railroad (now BNSF).

He then worked for 22 years for The Bon Marche (now Macy's). He retired as an assistant housewares buyer. Howard married Donabel Nelson on June 29, 1945. Four years later they took their first trip abroad. They traveled through southern England and bicycled through Western Europe. Family vacations with their three sons were spent camping and hiking in national parks in the West and later

backpacking in the Cascades of Washington. After Howard's retirement, he and Donabel enjoyed many cruises that took them all over the world. They moved back to Vaughn and lived very near his family home on Sunshine Beach, just outside of Vaughn Bay, for about 10 years. Howard, an enthusiastic gardener, became a Master Gardener. Survivors include his wife, Donabel of the family home in Spokane, sons Dwight in Fla., Brian in Spokane, and Brent in Ore., four grandsons, sister-in-law Hazel Kingsbury of Vaughn, and three nephews. There were no services per his request.

The Voice of the Key Peninsula

KEY PENINSULA
NEWS

September's here.
The rain is back.
For bargains here
We do not lack.

ANGEL GUILD THRIFT SHOP
in the Key Center Corral
253-884-9333 - angelguild9013@hotmail.com
Open Wednesday through Saturday 10:00 AM to 4:00 PM
The Angel Guild Thrift Shop is an independent philanthropy and is not affiliated with any other organization.

4th Annual Key Peninsula Civic Center
**Winter Warm-Up Crafts Fair
& Chili Cook-off**

Saturday, November 12th • 10am to 4pm

Artists & Crafters Wanted!
Handmade and one-of-a-kind, local crafts & creations only!

Apply online or pick-up an application at the KP Civic Center
www.kp.civiccenter.org • 364-3456

SEPTEMBER SALE
Annual Fall Sale
Discounting All* Nursery Stock 25%
Shrubs, Perennials, Fruit Trees plus much more.

40% off select group of trees
Oaks, Maples, Gingo, Birch, Locust, Ash & more
Trees add beauty, value and are nature's best air filters
*Subject to stock on hand

Fall Vegetable Gardening
New Crop of Vegetables for your Fall/Winter Garden
Beets, Lettuce, Broccoli, Kale, Leeks, Brussell Sprouts
Some will produce into next spring

BULBS, BULBS, BULBS
several varieties
soft and hard necked
Spring Color
Daffodiles • Tulips • Crocus
Hyacinths and many others
Plant Now!

All Bank Cards Accepted
884-3937
Open Every Day!
9004B KP HWY

Monday-Saturday 9am-6pm; Sunday 11am-4pm • Key Center

Don Olson

Donald D. (Don) Olson age 84 passed away on Aug. 1. Don was born on Dec. 1, 1926, to a pioneer family, Elmer and Elsie Olson and lived his entire adult life within 1/2 mile of the family homestead in Key Center. Don's whole childhood was spent helping on the farm, Sunnycrest Farms, which is still owned and operated by his sister, Joyce Niemann and her family. He attended grade school in Glencove and high school at Vaughn Union High School. It is there he met his wife of 64 years, Shirley Rickert Olson.

He also attended the University of Washington and then Montana State as an Air Force Cadet. After the war ended he and Shirley were married and built their home in Key Center. Don made his living working

in the woods in the early years as a logger and then started his own heavy equipment construction company. His last 20 years of working, he ran road equipment for the Pierce County Road Crew, Purdy District. Don helped form the volunteer fire department of the Key Peninsula and served as Chief from 1955-57. He also loved his garage filled with everything a person would need to build or fix anything. After retirement he enlarged his garden and soon became "Potato King of Key Center". During those retirement years he and Shirl would take trips to visit their daughters and families in Idaho, Arizona and California. His six grandchildren were very important to them both. In addition to the fire department his volunteer life included The Key Peninsula

Civic Center, a founding member of the Key Peninsula Lions, Gig Harbor Elks and Eagles, Twilight Dance Club, Key Stepper Square Dancers and the Vaughn Community Church.

Don was preceded in death by his parents, brother Edmund Olson and sister, Phyllis Anker, his dog and faithful companion, Smokey alias "Mayor of Key Center." He is survived by his family, wife, Shirley Olson, daughters, Donna Summerhays, Tucson, Az, Claudia (Dale) Loy of Key Center, Debby (Lance) Englund, Victor, and Darcie Long of Lakebay; grandchildren, Kyle (Heather) Koehn, Amy (Ly)Shaver, Kara (Brian) McEvoy, Taryn (Brian)Neville, Bryan and Brandon Long. Great grandchildren, Kelsy, Emily, Dylan, Kacey, Avery,

Isabella, Kaitlyn and Whitney. Also sisters, Joyce Niemann and Gail Sparks and many nieces, nephews and cousins.

A graveside service was held Aug. 4 at the Vaughn Cemetery. A celebration of his life was held on Aug. 13 at the KP Civic Center. The family wants to thank the staff at St Antony's for giving our Dad such great love and care during his final week and thanks to Dr. Roes for the many years of his care. Arrangements were handled by Haven of Rest, Gig Harbor and you can visit the web site to leave a message for Don's family on the guest register at www.havenrest.com. In lieu of flowers donations may be made to the following organizations, The Mustard Seed Project, Key Peninsula Civic Center, and the Key Peninsula Lions.

Place your business card in this advertising directory
Call 253-884-4699 or e-mail ads@keypennews.com



Aspen
Land Surveying LLC
at The Landing in Key Center
(half a block east of the stop light)
253-303-0270 www.aspenland.com

Hundreds of Lavender Plants - Lavender Products
Come and visit us on the Key Peninsula Farm Tour
Saturday, October 1, 2011



Blue Willow
LAVENDER FARM
On the Key Peninsula
10615 Wright Bliss Rd Kp N, Gig Harbor, WA 98329
253-225-9030
Open Tuesday - Saturday, 10 AM - 5 PM
www.bluewillowlavenderfarm.com

BROOKSIDE VETERINARY HOSPITAL
Tender Loving Care For All Your Family Pets!



Lisa M. Woods, DVM
13701 118th Ave, NW
Gig Harbor, WA 98329
253.857.7302
253.857.7654 Fax

- ~ Weddings
- ~ Alterations
- ~ zips/hems
- ~ Costumes
- ~ Wearable Art
- ~ Classes



Dragonfly
Designs
(253)884-4769

DRIVE THRU FEED
(253) 884-3386
HOURS: Open Every Day
16915 121st K.P.N., Gig Harbor, WA

Gentily Home Services

Home • Office • Out Buildings • Repairs
Replacement • Alterations • Decks • Fixture
Replacement • Windows • Doors • Minor
Plumbing • Water Damage
• Lights • Cabinets ...and more

Mike Gentile
PO Box 496
Vaughn, WA 98394
Handyman
#GENTHS933MF

Phone: (253) 884-2491
Cell: (253) 376-6227

Historic
Vaughn Bay Church
A Community Worship
Worship Service 10:30 am
884-5403
VFW Room
Key Peninsula Civic Center

KEY PENINSULA CARPENTER
All Phases of Carpentry & Painting

Owner/Operator
Free Estimates/Same Day Call Back
License - Bonded - Insured

CALL STEVE
253-884-6693
Stevestem@gmail.com

Steve's Home Repair & Remodel Lic # STEVHR064J2

Key to Learning
Childcare/Preschool

"Nurturing the skills to succeed in school...and life!"

Gig Harbor/Key Peninsula Area/ Minter Elementary School
Ages 3-11/ Flexible Hours All Meals Provided
Awesome Playground Great Friends
30 Years as Licensed Home Childcare Provider
Heleen Macomber 253-858-3480 or 253-858-3705

Equine, Livestock & Residential Fencing—Since 1989
Warick & Janice Bryant



KIWI FENCING COMPANY, Inc.
Custom Farm & Fence Solutions

13108-15th Ct. KPN
Gig Harbor, WA 98329
www.kiwifencing.com
#KWFIC055DA

800-596-3374
253-851-5494
fax 253-851-5550
cindy@kiwifencing.com

LAKEBAY ROOFING
253-884-2186
"servicing all of the Gig Harbor and Peninsula Area"

Spring Special
\$500 OFF
any Roof Cleaning

Keep your roof in **TIP TOP** shape
Schedule your roof cleaning today!
Moss Removal/Treatment, Gutter Cleaning

Easy and reliable solutions for:

- Decks
- Lt. Plumbing
- Int./Ext. Maint. & Repairs
- Floors
- Ramps
- Electrical
- Finish Trim
- Press Wash

LG HandyWorks
(253) 653-1831
(360) 507-4470

LGHAN**981PH lghandyworks@gmail.com

Have your historic event in our historic building.



Parties • Weddings • Reunions
Memorials • Fund-Raisers • More
www.longbranchimprovementclub.org
4312 Key Peninsula Highway South
call 253 884-6022

The Longbranch
Improvement Club
BETTERING OUR COMMUNITY SINCE 1921

Longbranch Self Storage
INDOOR AND OUTSIDE SPACES AVAILABLE



P.O. Box 575
Lakebay, WA 98349
4117 Key Peninsula Highway South

253 884 3455
cycrn@aol.com

Brandy Elzey
Owner/Designated Broker

15510 92nd St KPN
PO Box 688
Wauna, WA 98395

LZ Property Management, LLC

Ph. 253-884-2076
Fx. 253-884-1238
lzpropmgmt@live.com

"It's not just a rental, it's an investment"

MICHAEL'S
ROOF SERVICE
Get the best for less

LOWEST RATES
ON THE PENINSULA

LIC # MICHMSSBPS michaelsroofservice.com
253 241-0614

Personal Injury, Family Law,
Wills and DUI

F. MICHAEL MISNER
Attorney at Law

3007 Judson Street
Gig Harbor, WA 98335

Phone: 253.858.5222
Fax: 253.858.5111
Email: mike@misnerlaw.com

natureschildmontessori.com

(253) 884-6313

**Nature's Child
Montessori**



Nimrick's Bulldozing "Fire Up The Diesel"



Small & Large Jobs
Land Clearing
Site Prep
Rock Walls
Roads
Logging
Gravel

Call for Free Estimate

15406 92nd St. KPN
Gig Harbor, WA 98329

Jeremy 253 365 8887
Randy 253 606 3088

Serving the community for over 32 years

The Voice of the Key Peninsula

**KEY PENINSULA
NEWS**

**ONE EARTH
Enterprises, Inc**


Remodel • Repair • Design
253-857-7259
Ira Spector • Lic# ONEEAE927CJ

Let's Cross Some Things Off That List!

PENINSULA IRON
11021 SR 302 NW, GIG HARBOR, WA 98329

CUSTOM STEEL & ALUMINUM WELDING
GATES ~ RAILINGS ~ TRUCK RACKS

KEITH HILLSTROM OFFICE (253) 857-2056
SCOTT ROGERS SHOP (253) 857-8844
FAX (253) 857-2059



PENINSULA MARINE

Service & Repair
~All Makes & Models~
Dockside & Curbside

253 **884 5217**

Serving the Peninsula & Harbor since 1997 cat.#0249



PENINSULA MARKET

WE ARE BREAKING GROUND
New Supermarket Coming
to Key Center

"We will stay open for Business throughout construction"

Lakebay 253-884-3325 Lake Kathryn 253-857-5362
www.nimricksdmarket.net

SAW MILL

Portable & willing to travel!
Let me turn your logs into lumber.
Very Economical & Green
License - Bonded - Insured

CALL STEVE 206-300-9871 stevestem@gmail.com
Lic # STEVEHR064JZ (Steves home repair and remodel)



Pierce County
Office of the County Council

STANLEY L. K. FLEMMING
Councilmember, District No. 7

930 Tacoma Avenue South, Room 1046
Tacoma, Washington 98402-2176
stan.flemming@co.pierce.wa.us

(253) 798-6654
(800) 962-2456
FAX (253) 798-7509

TeddyBull's Cat Boarding
And In-Home Cat Care

Suzy Meyer
Lic. Vet. Tech.
Call for Details
253-884-5636

www.myspace.com/catboarding
Licensed-Bonded-Insured



Tractor Works

Brush-hog, field cutting
Garden Tilling
Fence Post Auger

Dan Miller
danmiller332@centurytel.net 253-884-3302
(cell) 253-514-9259



viking glass co.
253-588-2337
vikingglasscompany@gmail.com

Glass
Mirrors
Shower Doors
Tub Enclosures
Insulated Glass

Mike 606-8920
Andy 985-0310



THE YANKEE CLIPPER
BARBERSHOP

The best in men's haircuts
& steam towel shaves

WEEKDAYS 10 TO 6
SATURDAY 10 TO 3
CLOSED MONDAY

253-509-2882

9013 KEY PENINSULA HWY 91
LAKEWAY WA



Place your business card in this advertising directory
Call 253-884-4699 or e-mail ads@keypennews.com

Out & About


To see more Out & About photos, visit our web site at www.keypennews.com and follow the Photo Gallery link. See more of your neighbors out and about, Key Peninsula scenes and happenings. The online gallery features web site exclusive photos!



Photo by Ed Johnson, KP News


Julie Marshal, daughter of Dennis and Cindy Marshall of Lake Holiday, spends August weekends dressed in period garb and celebrating the middle ages at the Washington Midsummer Renaissance Faire. This year, the Faire is being held at the Kelley Farm in Bonney Lake, Washington. The Faire offers magicians and jousting as well as musicians and singers and pirates. One can also purchase period costumes to wear when you next attend the Faire. In this photo, the Queen is playing a game of croquet, reminiscent of Alice in Wonderland. Julie is the third wicket, blonde in a red and white dress.

Where in the World...



Leiann Moselle of Longbranch took her copy of the KP News with her when she visited Ohio. She is standing at McKinley National Memorial Ohio.

sponsored by:



Chip Butzko REALTOR®, SRS
253 617 9671
John L. Scott
REAL ESTATE
2727 Hollycroft St. NW, Ste. 201, Gig Harbor 253 858 7500



Left: Geese flying in formation signal the end of summer is near as the sun rises on Von Geldern Cove in August.

Photo by Ron Cameron, Special to the KP News