

BOX HOLDER



Key Peninsula NEWSLETTER

Non-Profit Org.
U.S. POSTAGE
PAID
PERMIT NO. 2
VAUGHN, WA. 98394

Circulation 4100

NEIGHBORHOOD NEWS FROM WAUNA TO LONGBRANCH

SEPTEMBER 1981, VOLUME VIII, ISSUE 9

KEY PENINSULA MIDDLE SCHOOL OPENS WITH ORIENTATION

John Robinson, principal of Key Peninsula Middle School has released the following information to help students be introduced to their new school. There will be Orientation Day on Thursday, September 3rd. The schedule for that day begins at 9:00 AM and ends at 11:00 AM. School buses will pick students up at the same stop they will use during the school year and take them home. Add 45 minutes to the regular bus schedule for loading time.

On Orientation Day, students will pick up class schedules with names of classes and teachers. Some of the teachers will be at school that day so students can meet them before school starts. They will also be able to tour the school, pick up student handbooks, find their classrooms and lockers, and purchase locks for \$3.00 each.

If a student cannot be at school the morning of orientation, he/she can still pick up schedules, etc. that afternoon (September 3rd) until 3:30, or 8:00 AM to 3:30 PM on Friday, September 4th, or Tuesday the 8th, or the morning of the 9th.

It is not confirmed at this time if the cafeteria will be able to serve hot lunches on the first day of school. If people cannot contact the school before starting date to determine the arrangements, be sure to bring a sack lunch. Milk can be purchased.

The Student Handbook issued to every student will contain information of interest to parents; progress reports, activities, fees, services available, school regulations, etc. There will also be an early Open House in September for parents to see the facility and meet the staff. The date will be announced later.

The school building is basically finished, furnished and ready for occupancy. The general classrooms and library are complete, although there are still some details to be completed in the gym.

Two activity busses will return students from boys and girls after school soccer and volleyball when school starts. They will be competing with other Pierce and Kitsap county teams.



John Robinson and his staff are enthusiastic about the new building and the solid program they have to offer the students. He and other principals will be meeting throughout the year to insure the continuity of that program between all levels of the school program - elementary, middle and secondary.

SCHOOL BEGINS

Once again, both students and teachers will begin a fresh start into the school year on Wednesday, September 9th. Evergreen Elementary, under the new principalship of Dave Watson, will hold school from 9:00 AM to 3:30 PM. Vaughn Elementary, with Principal Larry Hawkins, will start at 9:00 AM and close at 3:30 PM. Key Peninsula Middle School will be open from 8:25 AM to 2:50 PM.

The August 19th Peninsula Gateway has published all hours and bus schedules for these schools.

FALL FLEA MARKET ON SATURDAY, OCTOBER 10TH

It's not too early to start looking through attics and store rooms for useable items to sell at the Civic Center Fall Flea Market on October 10th.

With inflation as it is, this is a good opportunity to sell what you no longer need, and buy what you do need at bargain prices.

Booths are available for \$5.00. For further information call 884-2362.



STATE SENATE HEARING SEPTEMBER 10TH AT CIVIC CENTER

Funding of local parks, the disposal of hazardous wastes, and the air pollution control system will be subjects of a hearing to be held by the Parks and Ecology Committee of the Washington State Senate, chaired by Senator W.M. "Bill" Fuller of Chehalis. The hearing is scheduled for Thursday, September 10th at 7:00 PM at the Key Peninsula Civic Center in the Gold Room.

Local representatives Senator Art Callaghan, Dan Dawson and Barbara Grandlund will be joined by other senators, Guess, Haley, Golp, Hansen, Hurley and Williams.

The parks funding study will provide an opportunity for local residents to comment on the difficulties in funding local parks and resulting program limitations. This study was directed by Senate Resolution 1981-103, generated out of concern for hardships experienced at the local level in providing adequate park services.

Also on the agenda will be a discussion of certain elements of the State Air Pollution Control System and the question of hazardous waste management and disposal.

The public is invited to attend the hearing and give their views on any of these topics.





P.O. BOX 82 VAUGHN, WA. 98394

PUBLISHER

Key Peninsula Civic Center
Caretaker, Ernie Rouse
884-3456

CO-EDITORS

Jeannie Sagle
Pat Greetham

CLASSIFIED ADS & SUBSCRIPTIONS

Thelma & Harry Klein

DISPLAY ADS & LAYOUT

Bob Schottland
Marlyce Viers

COPY LAYOUT

Dolores Ramsdell

TYPISTS

Kay Beck
Pat Hunter
Janice Palumbo

BILLING

Jean Humphreys

CIRCULATION

Lucy & Carl Breitsprecher

FEATURE WRITERS

Cecil Paul
Ruth Little
Valda Young

ADVERTISING RATES

Single business card, 2x3.....	\$ 6.00
Double business card, 3x4.....	12.00
Triple business card, 3x6.....	18.00
1/4 Page, 6 1/2x4 1/2.....	22.00
1/2 Page, 6 1/2x9 3/4.....	40.00
3/4 Page, 9 3/4x10 1/2.....	55.00
Full Page, 9 3/4x13 1/2.....	75.00


YOUR PREZ SEZ:

Because of several near misses during the past few weeks, I feel that I must again ask all of you to be especially careful in driving on our curving roads. I am always thankful that there are not more accidents when I see so many people approach the Home bridge over the yellow lines. The same holds true on other roads. With more people living on our Peninsula, we must all practice defensive driving.

We are still looking for persons to help us in various capacities around the Civic Center. We especially need a person to head up our Wednesday night Bingo program. If we are to have a successful skating season this fall, we also need someone to be the manager. Just call me at 884-3606 if you can help.

Our nominating committee for officers is again hard at work to find persons to serve on the board for the 1982 and 1983 terms. If you think of someone who would like to become better acquainted with many persons in our area, this would be a good opportunity. We are most grateful to all who help in so many ways.

If you have not had an opportunity to register to vote in the November election, do so right now. Call the nearest school for information. All elections are of great importance and this will be also. Don't forget to vote in the primaries also.

See you at the special Senate Committee hearing September 10th.

The Key Peninsula Newsletter is published monthly by the Key Peninsula Civic Center as a community service and Board project. It is staffed by volunteers and solicits news of general interest to the community.

CHAPPARELL DANCE

The last dance of the Longbranch Improvement Club will be Labor Day Weekend, Saturday, September 5, with music by the Chapparells.

Music starts at 9:30 and continues to 1:30. There will be hamburgers available in the kitchen as well as potatoe salad and other goodies.

Pat Robinson says, "Be sure to get your tickets early. The Labor Day Dance is usually sold out. We want to see all our members and their guests at this one."

For ticket information, or information on how to attend as a guest, call Pat or Carl Robinson, 884-2372, Barry Hunter at Key Center Realty, 884-3327, or Longbranch Mercantile, 884-3721. Or just drop in at the store or Real Estate Office, and pick up your tickets.



SQUARE DANCE LESSONS BEGIN

SKIRTS-N-FLIRTS

Skirts-N-Flirts Square Dance Club of Vaughn will again sponsor beginning square dance lessons on Monday nights from 7:30 to 9:30 PM starting September 14th.

The class will be open for new members for the first three Mondays, then will close. Your first lesson is always FREE so why not come out and try it under no obligation. Just have a good, old fashioned night of fun. This is good recreation the whole family from 12 years old and up will enjoy!

Unlike any other form of dancing, the only requirement to learn Square Dancing is knowing your left and right hand apart, preferably have your own partner, and a desire to have a good time.

John and Kay Beck will teach these classes at the Civic Center gym.

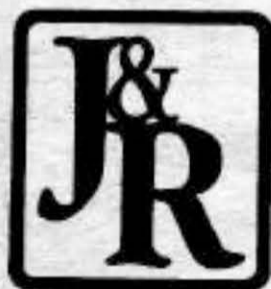
For further information call President Byron Ray at 884-3323, Van Slykes at 884-3738 or Caller John Beck at 876-3120.

GIG HARBOR TWIRLERS

The Gig Harbor Twirlers will start a series of lessons for beginning square dancers starting at 7:30 PM on Monday, September 14th at Burley Community Hall in Burley.

The lessons will be taught by the new Twirler's caller, Bill Stone of Port Orchard. Anyone interested in learning to square dance is welcome to come.

Square dancing is a fast growing form of recreation in all parts of the country as more and more people discover how enjoyable it is.



**JACKSON &
ROBINSON**

Law Offices

EVENING & WEEKEND APPOINTMENTS

NO INITIAL CONSULTATION FEE

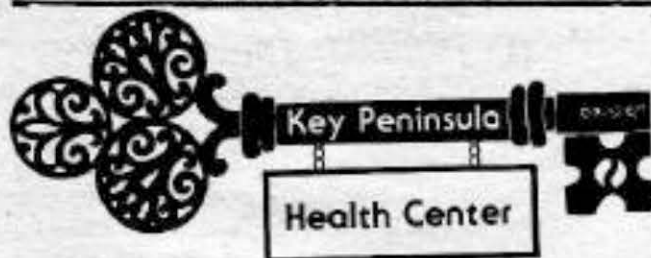
SIMPLE WILL.....\$ 50.00

SIMPLE DIVORCE.....\$200.00

10% SENIOR DISCOUNT

3620 GRANDVIEW STREET
GIG HARBOR, WA. 98335

(206) 851-5126



KEY PENINSULA HEALTH CENTER

NEW HOURS:

MON, TUES, THURS, FRI - 9AM-5PM
WED 9AM-9PM SAT 9AM-1PM

Answering service for after hours medical emergencies. You can contact the practitioner by calling 572-3222. If you call the Health Center a recording will give you the answering service number. The practitioner carries a radio pager and can be reached by the answering service.

Construction on our new building is expected to begin in September and we are planning fund raising activities to buy furnishings and equipment. Kick-off will be a spaghetti dinner and raffle at the Civic Center, October 24th. More details later!

Key Peninsula Health Center is governed by a Board of Directors who are all volunteers from this community. Serving at this time are: Janet Rogers, President; Teddy Peterson, Vice-president; Sandy Newhouse, Secretary; Fern Bolyard, Treasurer; Dick Bauer, Carolyn Caine, David Hahn, Alicia Kvamme, Mary Pascoe, Peggy Schmidt, Robert Snyder, Eleanor Stock, and Judy Wheeler, Board members.

We welcome your ideas and suggestions!

GARDEN CLUB CHANGES MEETING DAY

After years of meeting on the third Thursday of the month, Vaughn Garden Clubbers voted unanimously to change to the third Wednesday, due to conflicts with other Thursday meetings.

The first meeting will be at Lois Ashley's Greenbriar home on Wednesday, September 16th at 10:30 AM.

This year's officers are Bea Emil, President; Helen Helm, Vice-president; Florence Jones, Treasurer; Opal Donovan, Secretary; and Marylou Moore, Publicity. A Historian will be selected at the meeting.

Cars meet at 10:10 AM at the Civic Center to pool rides. Guests are welcome to bring a sandwich and join the group. Coffee, tea and cookies will be served.

VAUGHN WOMEN'S FELLOWSHIP

With summer drawing to a close, it's time once again for the Ladies' Fellowship of the Vaughn Community Church to begin their monthly meetings and luncheons.

Each month through the school year, we have a Fellowship salad luncheon planned. On these days we have a short meeting, a speaker and we each bring a salad to share.

Babysitting is provided in the nursery and mothers bringing children are asked to bring a sack lunch for each child and diapers for the babies.

The officers of the group attended a planning retreat in May and have made plans for interesting speakers, features and delicious luncheons.

The schedule will start off with a Friendship Tea on September 11th at 1:00 PM at the Vaughn Church. This will be a short time of fellowship and a warm welcome is sent out to ladies in the community who would like to come and join us.

The Tea will be followed two weeks later, on September 25th at 10:30 AM, with the monthly luncheon which will have a theme of "Now That It's Fall - Let's Get Organized". There will be a feature on home management and organization and a speaker will talk on "The Priorities of a Christian Woman".

The luncheon will feature salads and all kinds of dishes made with zucchini squash.

Please come and join us as we begin a new season of fellowship.

SPECIAL BOARD NEWS

Because of the special Senate Committee hearing in the Gold Room on September 10th, our next Board meeting will be on September 3rd at 7:30 PM. We urge all members of the Board to be there to meet our new caretaker.

PENINSULA SOCIAL CLUB

A potluck dinner and meeting of the Peninsula Social Club will be held at 6:30 PM on Tuesday, September 8th at the Longbranch Church Annex.

Players from the Performance Circle Theater will present a skit for the benefit of members to show their artistic ability and to encourage buying of season tickets for the coming winter season.



TOOL VALUE OF THE MONTH

QUANTITIES LIMITED

Master MECHANIC.



Reg. 19.99

now 7⁹⁹

While Supplies Last

HEAVY DUTY STAPLE GUN

Drives 5 sizes of staples for installing insulation, upholstering and more. With built-in staple remover. 345025



KEY WESTERN BUILDING CENTER
884-2311

HOURS: 8:00 AM - 5:00 PM - MON-FRI

WHAT IS MY PROPERTY WORTH?

ONE OF THE MOST FREQUENTLY ASKED QUESTIONS IN REAL ESTATE TODAY.

FOR YOUR FREE MARKET ANALYSIS, FILL IN THIS COUPON AND MAIL TO: COLONY REAL ESTATE, INC.
P.O. BOX 336
VAUGHN, WN. 98394 OR CALL: 884-3304

FREE

YES, I WOULD LIKE A COURTESY MARKET ANALYSIS WITH NO OBLIGATION TO ME.

FREE

NAME _____

PHONE # _____

PROPERTY ADDRESS _____

KC MEATS
LOCKER BEEF
884-4334



WORTH READING

"Green Medicine", by Margaret B. Kreig, is a very interesting book. I wish every person in the world could read it; especially the younger ones. Talk about opportunity!

Margaret Kreig has a knack for making complicated scientific work seem simple, as well as extremely interesting. To a country boy with outdoor interests, her descriptions of how the medicines that we take for granted are discovered, developed and finally made available are as absorbing as any detective mystery.

This book should appeal to everyone with even a speck of adventure in his system. The Amazon river watershed is a garden of medicinal plants, whose uses are sometimes known only by savage witchdoctors. It pays to stay on friendly terms with the natives!

Hardships experienced by the medicine hunters is not the special theme of the book, but are easily imagined. Insects, snakes, tiny body cavity seeking fish; suspicious people keep intruders on guard.

South Africa; New Guinea; Australia; and China are some of the areas that come to mind at the moment. There are many others, including the U.S. Every country has areas where folk medicines are in common use. Whether administered by a witch doctor or a housewife, most of these concoctions have some basic ingredients of real value.

An example might be willow bark tea, a folk medicine used for stiff joints and rheumatism. Willow bark contains a substance related to salicylic acid and therefore to aspirin; our favorite pain killer.

Captain Cook was welcomed to the Fiji Islands with a delightful drink called Kawa Kawa. This produced a pleasant feeling of relaxation. It was made by young virgins who sat around a large bowl chewing Kawa root and spitting it into the bowl. Modern Kawa is made by grinding it with rocks. It is not as potent as the original, virgin chewed kind, alas. Good help is hard to find nowadays!

If this has sparked your interest enough to cause you to read the book, I am happy. As a starter for a budding medicinal herb hunter, this Key Peninsula has lots of medicinal plants. Even yellow jacket nests are now worth \$5.00 each, and the man does the catching.

Cascara bark; wild cherry bark; fir pitch; princess pine; Oregon grape root; digitalis is made from foxglove leaves that grow wild here. Puget Sound has it's poisonous red tides and sometimes deadly shellfish. Even normally edible fish have sometimes been fatal, perhaps having been infected by a red tide type organism. All these toxins are of interest to the medicine hunters.

Hey! Read the book yourself; you'll like it.

COOTIETTES-PENN ANTS #609

Alice Palmer, Marie Schwenka and Irene McVicker made a visit to Bremerton Naval Hospital July 28th and served the patients fruit and punch.

August 13th, Marie Schwenka, Judy Wilson, Irene McVicker and Thelma Cadle visited patients at Cottesmore leaving ten dozen cookies to be served with their evening meal. They also visited Rocky Bay Health Center, giving them bananas.

There will be a picnic on September 12th for Rocky Bay. We will serve ice cream, cookies and fruit juice, also there are games to play.

The Washington State Convention will be held in Ellensburg, October 3rd and 4th at the Holiday Inn. Most of the Penn Ants will arrive the Friday before, as Saturday morning will be taken up with registering, a country store and committee meetings.

Our club has to plan a skit for the convention which is usually very funny and we win a prize.

Dates to remember in September are the 10th for our visit to the Cottesmore Convalescent Home, our regular meeting on the 17th, and the Bremerton Naval Hospital visit on the 22nd.

KEY PENINSULA SENIOR SOCIETY

All seniors are invited to potluck at noon every Thursday in the Gold Room at the Civic Center in Vaughn. Many interesting activities, speakers, picnics, and trips are planned for the enjoyment of all. Please come, you will enjoy the fellowship.

The Senior Van will go to the Puyallup Fair on September 15th and 22nd. Call 884-4440 or 884-2067 between 10:00AM and 2:00 PM for further information and reservations.

The regular Friday trips to Tacoma will leave Walt's Park and Ride area at 9:00 AM and will return at 4:00 PM or earlier if everyone is ready. It will stop at James Center where you may transfer to Pierce Transit for any place in Tacoma. Next stop will be Allenmore Medical Center, then on to the Tacoma Mall. No reservations are necessary but be at Walt's Park and Ride for a 9:00 AM departure.

KEY CENTER HOBBY HUT

(Formerly Craft-T-Gifts)

COME IN AND BROWSE
NEW!

Cross stitch samplers by
Needles 'N Hoops.

Christmas stockings to knit,
crochet or needlepoint. It's
not too early to begin your
Christmas gifts.

Watch for new yarns to make
sweaters to go with your fall
fashions.



Northwest Firearms

Located across from Fire Station

Key Center, WA.

Owner: Dave Walden

- * SMITH & WESSON HANDGUNS
- * H & K RIFLES & PISTOLS
- * UZI'S
- * WINCHESTER FEATHERWEIGHTS

- * RUGER RED LABEL
- * M-1'S -AR-15'S
- * AMMUNITION
- * TARGETS

884-4747

Closed Monday
10 to 7 Weekdays
10 to 6 Weekends

VAUGHN COMMUNITY PRESCHOOL

Vaughn Community Preschool will begin its fourth year this fall. The Preschool, located at and sponsored by the Vaughn Church, provides a pleasant growing experience for four and five year olds.

It is enjoyable to watch children grow. Play could be called the child's work and it is a serious matter. It is a means of growth and development. It is necessary for a good foundation for learning habits. Preschool play and activities help to increase a child's attention span, concentration, creative thinking, imagination and interests. It is rewarding to watch a child wholly involved and completely absorbed in what they are doing.

The combined efforts of the teachers, Mrs. Rodney Mitchell and Mrs. David Wheeler, create a warm, loving atmosphere conducive to building a positive self image.

Throughout the year the children learn the basic concepts - sizes, shapes, colors, counting, and letters. They are introduced to the seasons, weather, calendar, good health habits, animal and insect life, community workers, and participate in class cooking projects. Several field trips are planned for the year including farm and pumpkin patch, zoo, beach, dentist, veterinary hospital, post office, fire station, bakery, meat and fish markets.

Located on Vaughn Bay, the Preschool provides one of the few facilities for preschoolers on the Key Peninsula. The parents are not required to actively participate in the school's daily routine, but are welcome anytime they wish to become involved with the program.

Registration forms can be obtained by calling either Mrs. Mitchell or Mrs. Wheeler.



Vaughn Pre-school children enjoying shucking corn.

**LONGBRANCH IMPROVEMENT CLUB
SALMON DERBY**

September 19th

PRIZE MONIES

1st	\$150.00
2nd	\$ 75.00
3rd	\$ 50.00
4th	\$ 25.00

PLUS special children's prize and other merchandise prizes, liquid refreshments and open kitchen at the Longbranch Improvement Club Hall.

Tickets \$5.00 each

Available at: Longbranch Mercantile
Key Center Realty
Key Center Tavern
Purdy Pharmacy

Contact Joe Mercado at 884-3550 for further details.

LONGBRANCH FELLOWSHIP HALL

NUTRITION

The Nutrition Lunches planned by Mrs. Anne Engelsen, Senior Center Coordinator will resume on Tuesday, September 8th. Participants will prepare a Country Breakfast and scones. On September 22nd the menu will be Baked Seashore Salad, vegetables, and a Birthday cake.

At the Improvement Hall Salmon Derby on September 19th they will have a booth and sell their Nutrition Cookbook of recipes used the past four years, handy for potlucks and small family preparation. They will also sell baked goods and white elephants to raise funds for this worthy activity to continue.

If you are interested in the luncheons or a Cookbook please call 884-3716.

AEROBIC DANCE EXERCISE CLASSES

It is fun to shape-up in Aerobic Dance Exercise Classes. Morning and evening classes will resume in late September. Call Vickie at 884-3642 if you wish to participate.

**KEY PENINSULA SPORTSMEN'S CLUB
SEPTEMBER CALENDAR OF EVENTS**

- 5th - Card Party - 7:30 PM
- 11th - Dinner and Meeting-6:30
- 25th - Potluck Dinner & Game Nite 6:30 PM

KC MEATS
Mobile Slaughter
884-4334

Vaughn Community Church

"The Chapel By The Sea"
Worship With Us!

SUNDAY EVENING SERVICE
6:30 P.M.
SUNDAY SERVICE
9:30 AND 11:00 AM

DICK BAUER, PASTOR
884-2269
NURSERY CARE PROVIDED...

at the deadend of 38th Street NW
Gig Harbor

just off Highway 16
under the Wollochet overpass

RECYCLE FOR CASH WITH US!

open
Monday through Friday 10 to 6
Saturday 12 to 5
851-5507

ART COMPETITION

Peninsula-Bay Artisans are sponsoring an art competition for school age children and adults. The competition is in conjunction with their Fall Fine Arts and Crafts Show to be held November 14th and 15th.

Fine art works created on paper and canvas will be accepted. Art work should express the lifestyle and environment of the Peninsula area.

The competition is open to Key Peninsula grade and middle schools, Peninsula and Gig Harbor High Schools, and residents of the Peninsula area.

Categories for grade school students are: kindergarten and first grade, second and third grade, fourth and fifth grade, sixth and seventh, and eighth grades. First place for grade school categories will receive art supplies suitable for each age group. 2nd, 3rd, and honorable mention will receive ribbon awards.

High School categories are: 9th and 10th grades, 11th and 12th grades. First prize for 9th and 10th will be one \$25.00 cash award. First prize for 11th and 12th will be one \$50.00 cash award. 2nd, 3rd, and honorable mention will receive ribbon awards. Adults will receive ribbon awards. There will also be a Peoples choice award ribbon.

High school and adult entries will be hung at the November 14th and 15th show at the Key Center Civic Center in Vaughn. Three professional non-resident judges will jury the adult and high school entries. Judges will be announced prior to the show.

Grade school entries will be shown on a rotational basis at the new Key Center Library during October and November.

Rules and entry forms will be available September 15th. Grade and High school students should contact their art teachers for the rules and entry forms. Adults may send a SASE to P.O. Box 358, Vaughn, Wa. 98394. Peninsula-Bay Artisans will hold their next meeting on September 19th, at the Civic Center. Anyone interested in the show or competition should plan to attend.

KEY NOTE

Hazel Price Parrahm, resident of Rocky Bay and active in many Key Peninsula organizations, died on August 7. She was 89 years old and will be missed by her numerous friends.

Longbranch Community Church

Sun. Sch.: 10 a.m.
Bible Study: 10 a.m.
Worship: 11 a.m.

Longbranch, WA.



The Key Peninsula Senior Society will hold a sale in its new lounge on Thursday, Friday, and Saturday, September 10th, 11th, and 12th between 10 A.M. and 2 P.M. The lounge is in the old Key Peninsula Library room at the Vaughn Civic Center. Proceeds of the sale will be used to purchase furnishings and recreational equipment.

Donations for the sale will be welcome. Needed are household items, tools, games, furniture, garden produce, books, etc.

Also needed are canned goods for the emergency food bank, and larger items suitable to raffle - anything from beef to a boat. You will receive a receipt for a tax deduction.

If you have items you can furnish, please call the Key Peninsula Community Action Senior Office between 10 A.M. and 2 P.M., Monday through Friday at 884-4440 or 884-3581 after hours. Pickups can be arranged.

FLEA MARKET AND SALMON DERBY

Reserve your table now for the Longbranch Improvement Club's Flea Market to be held on September 19, 1981. Table Fee is \$2.00. Call Susan Ritchie for reservations at 884-2963 or Pat Robinson at 884-2372.

Hours are 10:00 AM to 4:00 PM for the Flea Market. The Salmon Derby will be held on the same day. Prizes and fees will be announced later. There will be no admission charge at the Flea Market.

Several food booths are planned so plan to shop and eat then attend the weigh-in of the fish, all on Saturday the 19th of September.

NURSERY SCHOOL



LONGBRANCH COOPERATIVE NURSERY SCHOOL

Does your child enjoy painting and doing art and science projects? Does he or she enjoy the company of other children the same age? Most children love all these things including listening to stories, singing songs and playing games.

You and your child can enjoy all of these things together in an exciting cooperative nursery school experience.

Longbranch Cooperative Nursery School is now accepting applications for 2, 3, 4, and 5 year olds for the 1981-82 school year. The nursery school is located at the Longbranch Improvement Club and is affiliated with Bates Vocational Technical Institute, the Home and Family Life Department.

For more information regarding hours, tuition, etc. please call Mrs. Joe Mercado at 884-3550 or Mrs. Sid Beach at 884-4348.

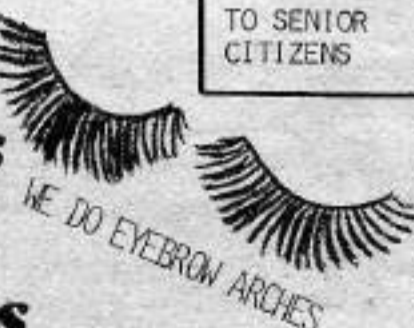
HAIR STYLING FOR

*MEN
*WOMEN
*CHILDREN

REDKEN MAKEUP
APPLE PECTIN SHAMPOO

**Sylvia's
'Staches
'N
Lashes**

10% DISCOUNT
TO SENIOR
CITIZENS



WE DO EYEBROW ARCHES

4 OPERATORS TO SERVE YOU

* PAULINE
* CINDI
* SANDIE
* SYLVIA

**AIR
CONDITIONED**

K-C CORRAL KEY CENTER

CALL 884-2479

Little by Little

-by Ruth Little

Several years ago I read about a man in England who makes beautiful baskets of woven Wisteria. Since my yard is a jungle of Wisteria growth and I'm very fascinated by baskets of all kinds, I decided to try making some Wisteria baskets.

Recently, with some prodding from Margaret Whittlesey, I set a date and prepared for a few days of earnest attempts at basketry. Luckily for us, I happened to meet Rivkah Sweedler that day and mentioned our plans to her. She is an experienced and expert basket-maker so I was delighted when she called later that day wanting to join us in our project. Result: several days of fun (and work): some experience and knowledge of what to do and when to do it (time of year) also what not to do: a great respect for all basket makers and a keen appreciation of their many skills and last and most important: three very primitive baskets with a bizarre attractiveness.

Do you know about "Maple Hollow Picnic Area," a state park located between Key Center and Home? I've asked many persons and very few, even old-timers, are aware of this charming little park - with trails through the woods and a path to the beach (steep). Often visitors to our area need a place for a picnic lunch that is open to the public so this park near Key Center would fill that need.

National and World issues are causing much concern to thinking people - the astonishing actions our government is taking. Lifting the ban on manufacture of chemicals and biological weapons is shocking to me. Also the promotion of baby formula milk products in the Third World countries which is endangering the health of babies that should be nursed. We stood alone against the World Health Organization in this. Truly shocking!

The Peace Corps has been drastically cut although everyone, with knowledge of it, agrees that it has worked wonders in many parts of the world. Social programs have been cut as handouts but subsidies for growing tobacco are maintained.

We are pushing the sale at arms to many countries and recently announced our intention to ignore the Law of the Sea.

Where did the ridiculous idea that throwing a lot of money at the military has anything to do with national security?

While cutting all these social programs, we are proposing opening up large areas of public lands to developers in what has been called "the greatest giveaway in our history." (These are the persons who are opposed to food stamps for the poor.) As Norman Cousins, in last issue of Saturday Review says: "One gets the impression that government today is a conspiracy of incompetents."

DOCTOR'S OFFICIAL WELCOME

The Community and the Key Peninsula Clinic Board of Directors welcomed Dr. William Roes on Sunday, August 2nd with a well-attended reception at the Glen Cove Hotel. On a lovely day, the turn-of-the-century atmosphere was predominant in the restored home of Mr. and Mrs. Larry Nadeau. They hosted the occasion assisted by the members of the Clinic Board.

The chairperson for the reception was Mary Pascoe who arranged for the delicious selection of foods. She thanks all those who so generously cooked. The servers were: Ruth Little, Georgia Penfield, Virginia Thompson, and Carol Foster. Teddy Peterson arranged to have the saxophone trio of Janet Shields, Mike Kimbal, and Craig Hennings play throughout the afternoon.

The Board wishes to thank all who helped with the reception and all who attended to welcome Dr. Roes to the Clinic staff. His wife, Ruth, gave birth to a daughter, August 15th. Congratulations!



Dr. William Roes and his wife Ruth at the reception for them on August 2nd at the home of Mr. and Mrs. Larry Nadeau.



**KEY CENTER
DRUG**

884-4144
Monday thru Saturday

Rt. 1, K.C. Corral #F
Key Center, WA 98349

Jim McMahon
Kathy McMahon

KC MEATS


Smoking & Sausage

884-4334

**For FIRE COMMISSIONER,
District 16, Position #1
VOTE**

HUGH McMILLAN

- President, Key Peninsula Firefighters' Association.
- The only candidate who is an active firefighter.
- Will work for the best firefighter training.
- Will seek the best emergency medical and firefighting equipment within current budget limitations.
- Gets things done.



**Lakebay Community
Church**

*Applying Bible Principles to
Everyday Living*

SUNDAY SCHOOL 9:45 AM NURSERY CARE
SUNDAY WORSHIP 11:00 AM SERVICES FOR YOUTH
8:30 PM AND ADULT

ONE MILE SOUTH OF HOME PHONE 884-3299
PASTOR VERNON WIGGERS 884-2395

**GOOD 'OLE COUNTRY DAYS FUN-
DESPITE 100° WEATHER**

The folks that braved the heat August 7th, 8th, and 9th were rewarded with lots of fun and community friendship at the Good 'Ole Country Days Celebration held at various spots from Purdy to Longbranch. The following pictures were taken by Arlene Petersen from Teddy's Country Health Food Store and show a little of what went on.



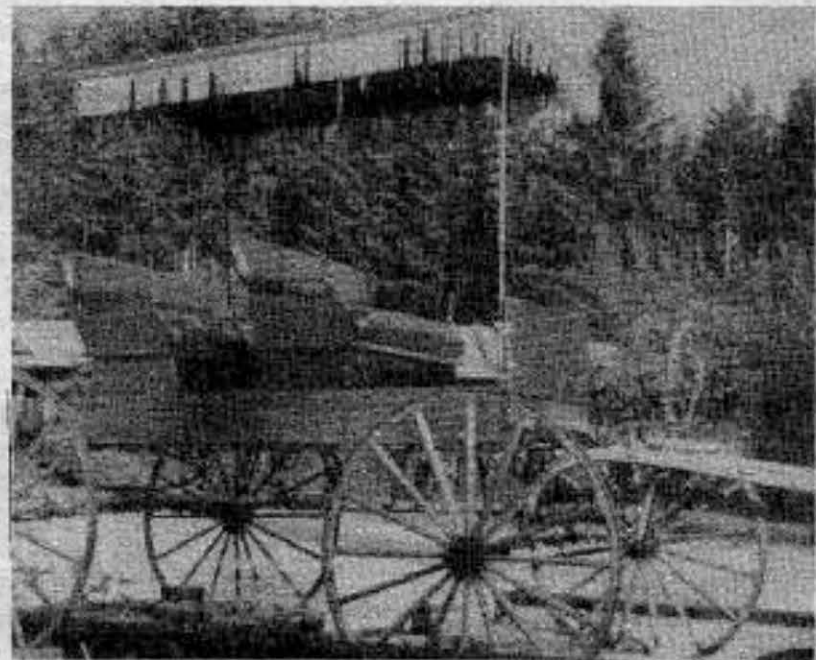
This is Henry Curl of Longbranch. Mr. Curl is 84 years old. He has lived here for 82 years in Longbranch. At the Good 'Ole Country Days he was awarded the longest resident prize.



These children were trying to see who could break their balloon first. This event was held at the R.C. Corral on August 8th along with many other games for children.



Although this bed didn't win the bedrace held on Sunday, August 9th, on Sherman Drive, one of its wheels came in first. The bed pictured belonged to the Health Center team. During the race it fell apart completely. The winning bed from Coast to Coast Hardware in Gig Harbor needed a wheel at one point in the race and borrowed a wheel from the Health Center bed. Puget Sound National Bank, champion bed racers of Tacoma, came in second.



This beautiful surrey was one of the many old type wagons on display at the Brook Restaurant during "Good Old Country Days".

We, the following members of the Key Peninsula Firefighters' Association support Hugh McMillan for the position of Fire Commissioner, District 16, Position 1. Please help us to get him elected. Vote for Hugh McMillan.

Larry Bell
Chris L. Christensen
Carla Griffin
Timothy W. Lemon
Don Olson
Michael Osmon
Dean Shriner

Richard D. Binion
Jerry M. Forrester
Kent S. Hoffman
Max Marlow
Dan Orme
Lawrence T. Pinter
Richard G. Stout

Richard (Dick) Callahan
Mary Grubb
James V. Latteri
Rick Olsen
Linda Orme
John E. Schmidt

**VOTE FOR
HUGH McMILLAN
FOR COMMISSIONER
DISTRICT 16, POSITION 1**

**9'S
FAIR HARBOR MARINA**

MOORAGE
DIESEL-GAS-OIL

BEER-WINE-MINI GROCERY

OPEN: 7 A.M.-7 P.M.
CLOSED THURSDAY

426-4028 RES. 275-6417

FRESH GEODUCKS

CHRONOLOGY OF DEVELOPMENT OF
KEY PENINSULA COMMUNITY SPORTS CENTER

- 1972 Park and Recreation District formed on Key Peninsula, by vote of community.
- 1973 Citizen's survey of community needs.
- 1973 Land (20 acres) acquired from Pierce County at nominal lease for development of Sports Center

as indicated by survey.
1974-75 Logging and grading by volunteers to provide funds and prepare site for 2 baseball fields, 1 soccer field, 2 tennis courts, and storage building. Space reserved for additional soccer field, non-organized sports area (horseshoes, basketball hoop, etc.) and natural preserve for hiking trails and picnicing.

1976 Campaign to provide \$5,000 in donations from interested individuals, for matching funds for tennis courts.
Commitment by Pierce County Park and Recreation Department to complete 2 tennis courts on the site.

- 1976 Passage of special levy of \$55,000 by the community, to continue work on the Sports Center beyond the capabilities of volunteers.
- 1976-77 Continuing work by volunteers and professionals:
Clearing, grading, seeding and fencing fields.
Installation of well, reservoir, and sprinkling system.
Installation of electric power and lighting.
Construction of on-site storage and shelter building.
Construction of tennis courts by Pierce County Park and Recreation Department.
- 1977- Awarding of H.U.D. grant of \$47,000 to the Key Peninsula Park and Recreation District for supplementary construction, due to the efforts of Pierce County officials.
- 1977- Formation of R.E.C.C. (Recreation Education Community Committee) to act in advisory and administrative capacity.
- 1977 Updating survey and study of community needs by R.E.C.C.

FALL OPEN HOUSE

Friday - Sept. 18th

New Calicos
& new ideas

BRING A FRIEND
50¢ - credit at
V.J.'s COUNTRY INN
with any purchase over \$5.00



Free Make-it & Take-it
Table

MANY IN-HOUSE
"SPECIALS"
real money-savers

NEW LAMP SHADES
you'll really like!



STAIN-A-FRAME
Christmas orn.

Hope to see all our old &
new friends - especially 'you'.

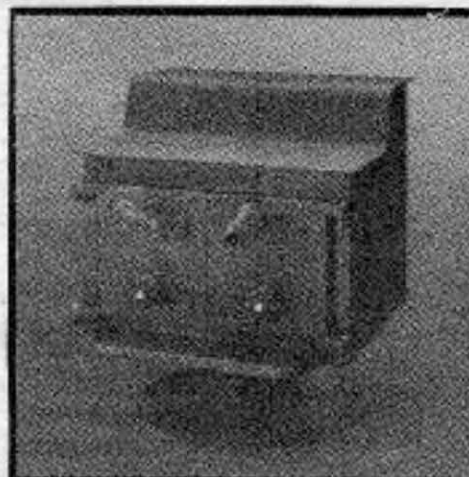
Sherman's Arts & Crafts

GIG HARBOR-LONGBRANCH HWY. LAKEBAY, WA. - 884-2454 10:00 AM - 5:00 PM

?High Electrical Costs?

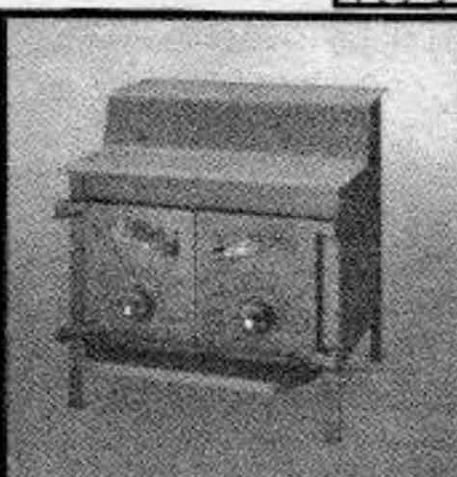
SEE

ALASKA KODIAK WOODSTOVES



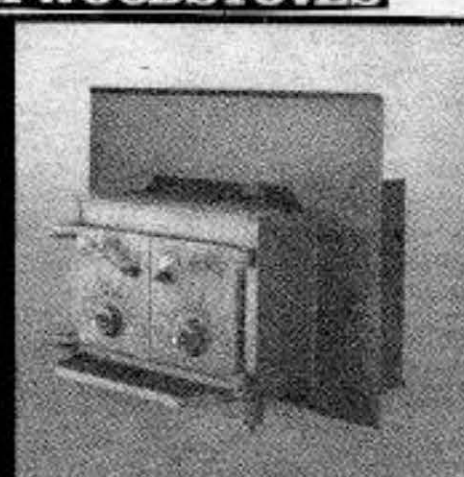
PEDESTAL FIREPLACE

Distinctive in appearance, the Pedestal Fireplace is designed to become the hub of family activity. Available in two sizes: the large size heats up to 2500 square feet for up to 14 hours, while the small size heats up to 1800 square feet for up to 10 hours. Both sizes can easily accommodate wood in excess of 20 inches long. Includes safety screen, available in top or rear stack and should be installed with damper. Dual level cooking surface for different heating temperatures allows the Pedestal Fireplace to also become a practical, energy saving kitchen helper.



THE FIREPLACE

Available in the same two size configurations and heating capacities as the Pedestal Fireplace. The Fireplace makes an efficient, reliable home heating system. Includes a safety screen, available in top or rear stack and should be installed with a damper. Dual level cooking surface for different heating temperatures allows the Fireplace to also become a practical, energy saving kitchen helper.



FIREPLACE INSERT

Designed to fit easily into your existing fireplace, the Fireplace Insert comes complete with blower for even greater efficiency. Available in two sizes: large size heats up to 2500 square feet for 10-12 hours while small size heats up to 2000 square feet for 8-10 hours. Easy to follow instructions are included. Includes safety screen. The Fireplace Insert is depicted with shield attached.

Fireside
Shop

884-4248

KC Corral Key Center

OPEN TUESDAY - SATURDAY
12:00 - 6:00
EVENING APPT. - 884-2969



Peninsula Country

SCHOOL EVENTS

OPENING SCHOOL ACTIVITIES

Gig Harbor High School

Week of August 17 - Registration information in mail to students grades 10-12. Schedules to students grade 9. August 20, 9:00 a.m. in Auditorium - All Gig Harbor High School students new to the school district.

August 24, 25 - Registration for grades 10-12. Appointment times were included with registration information.

August 26, 9:00 a.m. - 3:00 - Counselors available to work with Ninth graders with schedule problems.

September 2, 9:00 a.m., Auditorium - Ninth grade orientation.

Peninsula High School

NEW STUDENT ORIENTATION: Wednesday, September 2, 1981 from 10:00 a.m. to 12:00 noon. Each new student enrolling will be given an invitation to attend this activity.

NEW STUDENT REGISTRATION: Tuesday, August 25, 1981 and Wednesday, August 26, 1981 from 9:00 a.m. to 2:00 p.m.

FALL SPORTS: Varsity football begins August 24, 1981. Boy's and girl's cross country, girls' swimming, girls' volleyball and girl's soccer begins August 26, 1981. Freshman football begins September 1, 1981.

Goodman Middle School

Registration and Orientation: (New students in the Peninsula School District August 24th thru 28th - 8:00 to 3:00 p.m.)

Only 7th graders on the 1st day
Only 8th graders on the 2nd day
Everyone on the 3rd day.

Key Peninsula Middle School

ALL STUDENT ORIENTATION: Grades 6, 7, and 8 will attend KPMS on Thursday, September 3, 1981, from 9 a.m. until 11 a.m. for new student orientation.

Evening School

The Brochures for evening classes will be mailed during the week of 9/21/81. Classes begin the week of October 5. Preregistration is encouraged.

Regular School Hours

Peninsula High School: 7:45 a.m. to 2:15 p.m.
Gig Harbor High School: 8:00 a.m. to 2:30 p.m.
Goodman Middle School: 8:00 a.m. to 2:30 p.m.
Key Peninsula Middle School: 8:20 a.m. to 2:50 p.m.
All Elementary Schools: 9:00 a.m. to 3:30 p.m.

1981-1982 SCHOOL CALENDAR

September

9 First day of school
17 Puyallup Fair Day

October

9 No school (In service day).
29 Early dismissal (12:00) Elementary Schools, except Kindergarten.

November

2-6 Conference Days
11 Veterans Day, no school
26-27 Thanksgiving holidays.

December

21-31 Winter Break, Christmas

January

1 New Year's Day, no school
16 Early Dismissal (12:00) Elementary Schools, except Kindergarten.

February

1 Report Cards
15 Presidents Day, no school
25 Early Dismissal (12:00) Elementary Schools, except Kindergarten

March

19 No school (In service day).
25 Early Dismissal (12:00) Elementary Schools, except Kindergarten

April

5-9 Spring break, no school
19-23 Conference days

May

20 Early Dismissal (12:00) Elementary Schools, except Kindergarten
28-31 Memorial Day holiday

June

10 Early Dismissal (12:00) Elementary Schools, except Kindergarten
18 Last Day of School

School Board Meeting Dates

7:30 p.m., Second Tuesday each month

September 8, 1981	April 13
October 13	May 11
November 10	June 8
December 6	July 13
January 12, 1982	August 10
February 9	September 14
March 9	

Peninsula High School Football

Sept. 11 PHS @ Tyee
Sept. 18 PHS vs Fife (H)
Sept. 25 PHS @ North Kitsap
Oct. 2 PHS vs Port Angeles
Oct. 9 PHS @ Washington
Oct. 16 PHS vs Enumclaw (Homecoming)
Oct. 23 PHS @ Franklin Pierce
Oct. 30 PHS vs Gig Harbor
Nov. 6 PHS vs Spanaway

All games start at 7:30

Gig Harbor Football Schedule

Sept. 11 Mt. Si, here
Sept. 17 Liberty, there (Thursday)
Sept. 25 Bainbridge, there
Oct. 2 North Kitsap, there
Oct. 9 Franklin Pierce, here
Oct. 16 Washington, there
Oct. 23 Spanaway, here
Oct. 30 Peninsula, there
Nov. 5 Fife, here (Thursday)
Games start at 7:30 p.m.

Gig Harbor Girls Volleyball

Sept. 5 Franklin Pierce, here
Sept. 17 Peninsula, there
Sept. 22 Spanaway, here
Sept. 24 Washington, there
Oct. 1 Franklin Pierce, there
Oct. 6 Peninsula, here
Oct. 8 Spanaway, there
Oct. 13 Washington, here
Oct. 20 Franklin Pierce, here
Oct. 22 Peninsula, there
Oct. 27 Spanaway, here
Oct. 29 Washington, there

Peninsula Girls Volleyball

Sept. 11 PHS @ Curtis
Sept. 15 PHS @ Washington
Sept. 17 PHS vs Gig Harbor
Sept. 19 Curtis Invitational
Sept. 22 PHS @ Franklin Pierce
Sept. 29 PHS vs Spanaway
Oct. 1 PHS vs Washington
Oct. 6 PHS @ Gig Harbor
Oct. 6 PHS vs Franklin Pierce
Oct. 15 PHS @ Spanaway
Oct. 20 PHS vs Washington
Oct. 22 PHS vs Gig Harbor
Oct. 27 PHS @ Franklin Pierce
Nov. 3 PHS vs Spanaway

STORE HOURS: Monday through Friday, 9 to 5:30, Saturday, 10 to 2

Springhill Business
Center
8803 State Road 16
Gig Harbor
858-9129

Connie Schick
FLOOR COVERING



Washington State Contractor's License
No. CO-NW-182646D

LAND CLEARING
ROAD CONSTRUCTION
BANKRUN - GRAVEL
FILL DIRT HAULED
#AC-TI-VC-315PF



ACTIVE CONSTRUCTION

P.O. Box 191 - Gig Harbor, WA 98335
Bus. 858-2380 - Eves. 884-2884

CHARLIE'S SAW & MOWER

1 mile North of Key Center on Highway 302

Jacobson - Airens Dealer
Authorized Briggs & Stratton Service Center

Saw, Knife & Scissor Sharpening
Nylon Line Trimmers & Brush
Cutters on hand for immed. use

884-3183 Shop 10109 St. Rd. 302
857-6286 Home Gig Harbor, Wa 98335



QUALITY CONSTRUCTION

New Homes • Remodeling • Licensed • Bonded

OREN PETERSON
Phone 884-3093

Rt. 2, Box 439E
Gig Harbor, WA 98335

Lucile's Barber Shop

Hours: Tuesday thru Saturday
9 a.m. to 6 p.m.

1 short mile south of
Rocky Bay Health Care Center
on Hwy. 302 going to Shelton

884-3732

BURTON MACHINED PRODUCTS INC.

23002 Silver Bow Road, Keycenter
Gig Harbor, Washington 98335

TUES. THRU SAT.
7:00A.M. TO 3:30P.M.

JACK BURTON 884-2877

858-6066 (SHOP)




LARRY NICHOLS
Upholstery

COMPLETE FURNITURE REUPHOLSTERING
BOAT TOPS

NOW LOCATED IN GIG HARBOR

KEEP YOUR CLOTHES
LOOKING GREAT
with
Highland
Dry Cleaning-Laundry

Alterations - Repairs 564-6471
7110 6th Ave. (By the Narrows Bridge)
Tacoma, WA. 98406 Bob & Trudy Jones



WEED CONTROL
TANSY
BLACKBERRY
DANDELION
INDUSTRIAL
PEST CONTROL
ORNAMENTAL
TERMITES
ANTS - PLEAS
PRUNING
SHOPPING
CENTER MAINT.

QUE-DKE ENT. DBA
Summerick
INSECT & WEED CONTROL

Patty L. Morrison
P.O. Box 1251
Gig Harbor, WA. 98335 857-7592

Longbranch Automotive Center

AUTO REPAIR JERRY HANSEN
+ DOMESTIC Longbranch, WA.
+ FOREIGN South of the Church
(206) 884-3272

Bo-Mac Gravel Co.

1920 S.W. PINE RD.
PORT ORCHARD, WA. 98366



OPEN SATURDAY

R. F. "MAC" McCLOSKEY 876-2003
PARTNER 857-4185

WALTS FINE FOODS

AL'S MEATS

Look for Weekly In-store
Specials

FRESH PRODUCE
QUALITY MEATS

In Downtown
Key Center 884-3325



N' TACK

FEED, ACCESSORIES AND
SUPPLIES FOR ALL LIVESTOCK,
POULTRY, DOGS & CATS

OPEN 7 DAYS A WEEK
884-2850
RT. 1, BOX 208AA, LAKEWAY, WA 98349

DID YOU KNOW
Most Insurances
Cover Chiropractic

- NHA (Federal Employees)
- Blue Cross
- Medicare
- Workman's Compensation

Call 884-3040
Collins Chiropractic Center
KC CORRAL



Pet Grooming

TOP QUALITY - REASONABLE RATES

That Touch of Fluff

By Dyan
For Appointment Call 884-3588

HOME FEED & GROCERY

9-7, Weekdays 11-6 Sundays
884-2321

Featuring "Choice Beef"
Fresh Produce
Fishers Feed
friendly Service

SEPTIC TANK TROUBLES

REMEMBER...BEFORE TROUBLES
TANKS SHOULD BE CLEANED
EVERY 3 TO 5 YEARS.

**HEMLEY'S SEPTIC CLEANING
& ROOTER SERVICE**

CALL FOR INFO. 858-3432




PENELCO, INC.

COMMERCIAL - RESIDENTIAL
ELECTRICAL INSTALLATION

P. O. BOX 65
VAUGHN, WASH.

DON MILLS
PH. 884-2511

D. J.'S TIRE SERVICE

12118 Cramer Rd. N.W.
(Camp Seymour YMCA Rd.)
Gig Harbor, WA. 98335
857-6430



Hey! We sell Tires too!

Check our Everyday Discount Prices!

"NEW SERVICES"

- Computer Alignment & Suspension Repair
- Car & Light Truck Brake service, Drum & Disc
- 4x4 Service & Repair
- Electrical System Service & Repair
- Expert Minor Repairs
- Headlight Alignment
- Batteries Available

FULL TIME MECHANIC ON DUTY



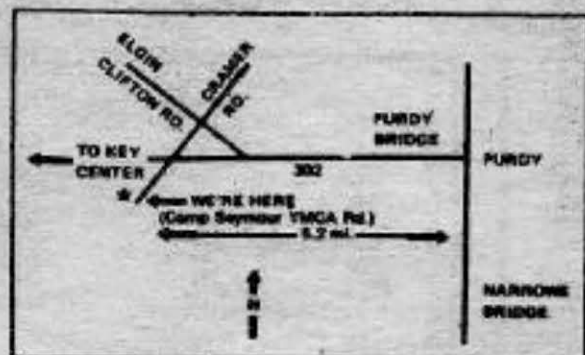
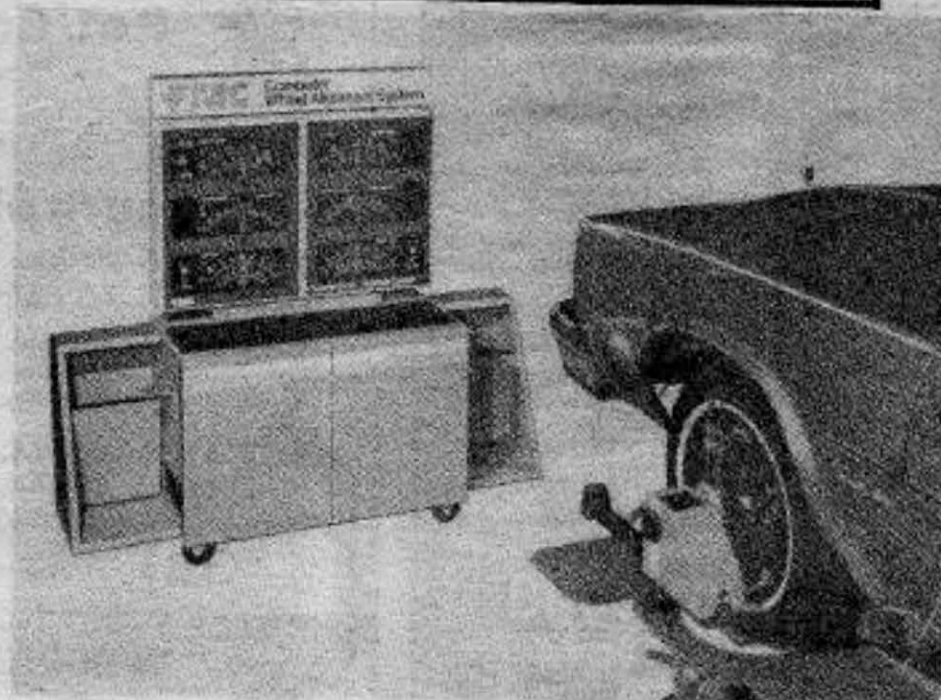
Precision Wheel Alignment

Featuring our FMC Wheel Alignment System

Computerized Wheel Balancing

For a smoother ride...

Featuring our FMC Electronic Wheel Balancer



857-4276

Merle Free Automotive Repair

ALL WORK GUARANTEED

over 30 years experience

1/2 MILES ON CREVISTON DRIVE - 1ST LEFT TURN SOUTH OF THE FRUIT STAND

ALCOHOLICS ANONYMOUS

MEETINGS HELD AT KEY PENINSULA HEALTH CENTER.

Key Center Group - Mon. - 8 p.m.

Longbranch Group - Fri. - 8 p.m.

CALL: ANN 884-2626
BURKE 884-3262
JIM 884-3886

BULLDOZING BACK HOE



GRAVEL AND FILL DIRT LOG BULKHEADS

Johnson Bulldozing Co.
LAKEWAY, WASHINGTON 98349
PHONE 884-2362

DAVE JOHNSON PHONE 884-3330
PHIL JOHNSON PHONE 884-2607

JERRY YORK

York Insurance Agency

Auto • Life • Fire • Homeowners • Boat


Springhill Ctr. - Hwy 16
Post Office Box 364
Gig Harbor, Washington 98335

Office 858-9560
Res. 857-6567

884-2523 DICK HALE KEY CENTER

BULLDOZING BONDED & LICENSED

876-0144 JERRY ERSELE PT. GORHAM

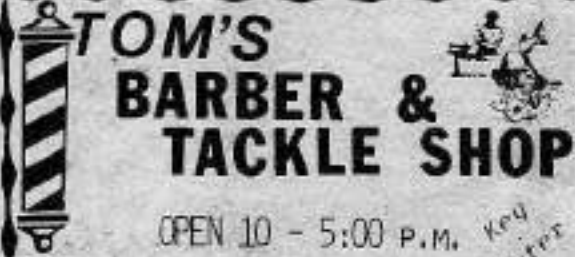


DICK'S BACKHOE & DUMP TRUCK SERVICE, INC.
GENERAL CONTRACTING

NO JOB TOO SMALL

BOBCAT WEEK-END WORK DITCH WITCH

TOM'S BARBER & TACKLE SHOP




OPEN 10 - 5:00 P.M. Key Center
TUES. THRU SAT.

STATE MUTUAL SAVINGS BANK

LOCATED DOWNTOWN
GIG HARBOR PH. 858-9927
Nine offices serving Pierce Co.

857-4011



GEORGE D. DURIS
BRANCH MANAGER - PURDY

Western FARMERS

P. O. BOX 25, BURLEY, WASHINGTON 98322

SAKURA NURSERY

884-3937 KEY CENTER, WA.

SPECIAL FALL SALE

All plants 20 to 30% OFF

Sept. 1-15 MASTER GARDENER: FRIDAY - 12:30-3pm

HOURS: Tues. - Sat. 10-5p.m.
Sunday & Monday Closed

L.E. Jopp Builders

- ★ Carpenter Work
- ★ Foundations
- ★ Bulkheads
- ★ Concrete Work etc.

884-3841
LICENSED & BONDED CALL COLLECT

PETE'S AUTO REPAIR



FREE PICK-UP & DELIVERY ON THE KEY PENINSULA

"WHERE SATISFACTION IS A MUST"

OPEN - MON. THRU FRI. - 8 TO 5
IN DOWNTOWN KEY CENTER 884-3124

LONGBRANCH MERCANTILE

FINE FOODS
MEATS-PRODUCE-GROCERIES
GAS-OIL-BEVERAGES

HOURS: Everyday 9 a.m. - 7 p.m.
884-3721

John Brewer (206) 857-2253

BREWER ELECTRIC CO., INC.

Residential-Commercial

14519 Peacock Hill Avenue, N.W.
P. O. Box 228 Burley, WA. 98322

Peninsula Accounting Associates

5209 Pt. Foedick Rd., Suite 203
MAIL: P.O. Box 676
Gig Harbor, WA 98335

JOHN E. MILLER Office: 858-8852
WALTER E. PAULSEN or 858-8168

KC MEATS Frozen Food Lockers

12 cu. ft. \$45 per year

884-4334


dump truck backhoe grader blade

GRADER SERVICES 884-2271



top soil road gravel rockery rock crushed rock

PHIL RADCLIFFE
route 1, box 95c lakebay, wa 98349



Randy's Bulldozing

4 in One Bucket • Land Clearing • Stump Haul
Excavating • Dump Truck • Roads Punched
• GENERAL DOZING •

RANDY NIMRICK
HARRY NIMRICK

1-857-2625 Rt. 4, Box 4783-1
1-884-2590 Gig Harbor, WA 98335

DUANE G. FLEHING

Cascade Insurance Underwriters, Inc.

2200 5TH AVENUE • TACOMA, WASHINGTON 98403

AC 206/627-3133
Residence 884-3340

LOOKING FOR A JOB? LOOKING FOR HELP?

SEE THE WANTS Ads

WANTED TO RENT: Summer beach cabin for off season. Any size or shape. Willing to do repair work for rent. Preferably on northern end of Carr or Case Inlet. Brian at 857-4267.

FOR SALE: Goats and Goats' milk. Call 884-4717.

WANTED: Old radios from the 20's and certain sets from the 30's-40's. Any condition OK. Also parts, tubes, speakers, radio books, etc. 857-4687, before 3 p.m.

BABYSITTING: Teacher needs mature babysitter 3 to 4 days per week. Our home. Lakebay area. 884-2049.

HANDYMAN- 884-4210

CARPET LAYING: Repairs, restitch, etc. Call Jim Rich, 884-3082.

RENT FREE, Couple or single, December, January, February, our house. No smokers. References required. Reply P.O. Box 867, Lakebay, 98349.

WAREHOUSE SPACE for rent in Key Center. 884-4334 or 884-2619.

YAMAHA YZ80. Silver with red stripe. Good for beginner. Call 884-2598 ask for Cecil.

FOR SALE: A "Warm Morning" circulator wood stove with fan. 29" box - \$300. 884-3770.

ANTIQUES & USEFUL THINGS, 2nd LOOK PLACE. Next to Longbranch Dock. Open under NEW MANAGEMENT. NEW HOURS: Wed. - Fri. 9-5 Sat. & Sun. 9-9, or Call us at 884-3530. Browsers Welcome!

BJD'S OF LAKEBAY T.V. REPAIR. Antenna installation. Color & black and white. Fast dependable service. Call 884-2217.

FLOOR COVERINGS INSTALLED: Carpet, linoleum, tile, parquet, ceramics. Orrie Moore, 884-3852.

FOR BARTER OR SALE:

- year old Nubian doe goat, ready to breed. Beautiful pet.
- very old violin
- architect/engineer professional drafting machine (good for drafting students).
- prospector/miner laboratory ball mill for assay or panning.
- Sears mimeograph.
- portable mineralite for many fluorescent minerals and paints, etc.
- master addresser for mailings, new.

Want dimensional lumber, plywood, blocks, small chain saw, experienced carpenter labor. 884-3581

Minterbrook Oyster Co.



Open 6 days a week
9 a.m. to 4 p.m.
(Closed Sundays)

Retail-Wholesale
857-4351

Longbranch Self-Storage

(1/2 Mile North of Longbranch Mercantile on the left.)

NOW RENTING
From \$13.00 per month

Outside Storage Space for Trailers, Campers, recreational vehicles and automobiles

ON SITE MANAGER
884-4466

BOAT DRY STORAGE
Commercial Size Garages
(20 x 20)

CLOSED
MONDAY AND WEDNESDAY
HOURS: 9 a.m. to 6 p.m.

NATIVE GARDENS NURSERY & LANDSCAPING

GARDENERS!
Get Ready for Fall!

WE HAVE COMPLETE STERILIZED COMPOST MIX - U HAUL \$10.50 YD
DELIVERED \$12.00 YD
(10 YD LOAD)

BETTER RESULTS FOR:
VEGETABLES, FRUIT TREES, SHRUBS & FLOWERS

(SENIOR CITIZENS DISCOUNTS AVAILABLE)

Delivery Service
Bark • Gravel • Fill • Topsoil • Peat • Sawdust • Rockery Rock

HOURS: 10 AM - 5 PM - 7 DAYS A WEEK

St. Rd. 302 & Cramer Road
Ed & Wendy Stocklin

857-4788

NEW NEW NEW

Coffee Break Press now offers a quick-print copy service.

In response to your demand, we can provide you with one copy or thousands of economical copies.

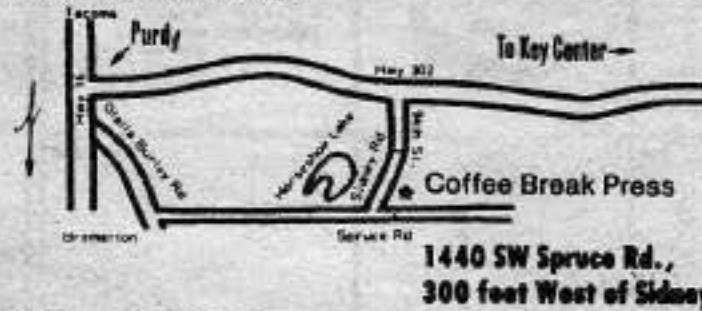
In addition, Coffee Break still provides quality printing, full design and graphics, bulk mail service, and full assistance to help you with all your printing needs.

Although we specialize in printing and publishing books, we also typeset, design logos, letterheads, business cards, brochures, and all types of forms.

Call us for help with all your printing and design problems.



Coffee Break Press
857-4329



DR. PENROSE GUILD

The first meeting of the season for the Dr. Penrose Orthopedic Guild will be a luncheon at the home of Mrs. Vernon Merrill.

Fund raising projects for the benefit of Mary Bridge Children's Health Center will be discussed. Co-hostesses for the luncheon are Mrs. Robert Crandall and Mrs. M.V. Merchant.

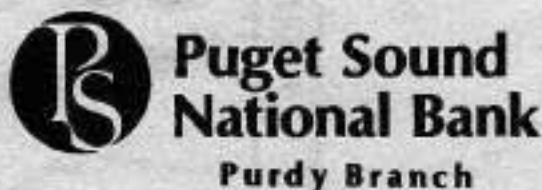


The expanded customer service staff, left to right: Debbie Morgan, Debbie Gerke, Lillian Kuhiman, Marcia Jones, Vivian Hancock, Sally Wood, Dixie Fazio and Manager Vincent Tilotta.

Growing with Peninsula Country.

Customer service is basic with the Puget Sound National Bank. And to meet the growing demand of customers, we have expanded our teller windows from three to five to expedite banking transactions. We have also increased our number of full time tellers to four and have the staff to serve our fifth station.

Our objective is to serve Peninsula Country people with the best banking service available.



Member FDIC

Key Peninsula Lutheran Church



REV EB WAGNER
Civic Center - Vauv'n

SUNDAY SCHOOL: 9:30am
WORSHIP SERVICE: 10:30am

Al-Anon Family Groups

Mon.-8p.m.-Key Pen. Health Center
Tues.-1:30p.m.-King of Glory Lutheran Church-Purdy
Wed.-8p.m.-St. John's Episcopal Church - Gig Harbor
Fri.-8p.m.-Key Pen. Health Center
Sun.-8p.m.-St. John's Episcopal Church - Gig Harbor
BEA:884-4133 MURIEL:884-2889

KEY PENINSULA LIBRARY HOURS

MON. & THURS.: 1-5 p.m. - 6-9 p.m.
TUES.: 1-5 p.m.
SATURDAY: 1-12 noon - 1-4 p.m.

Winners - Knock Knock Contest

- 1ST - JACOB BENOIT - (AGE 8)
- 2ND - JESSE STERNS -
- 3RD - JUSTIN HAHN - (AGE 5)

Teddy's Country Health Foods

IN KC CORRAL 884-3977

Weekly HEALTH TIP

(18) CUTS

Since most cuts are caused by carelessness, prevention is the best advice which can be given. However, accidents will happen and it is well to be prepared. Whenever there is a cut most persons are mainly concerned with the bleeding, which usually looks worse than it is. The first rule is not to panic. Place a sterile pad or clean cloth over the wound. If you have no cloth, close the wound with your fingers. If the cut is minor the bleeding should stop soon. If the blood flows steadily a vein has been cut and should stop bleeding in about ten minutes with pressure. If it spurts an artery has been cut and a doctor should be called immediately. Until he gets there, apply pressure intermittently. It would be well to see a doctor for all but the most minor cuts as scars can be prevented by proper suturing. It is also imperative to keep the wound clean to prevent infection.

Compliments of Key Center Drug



VOTE

**CHIEF
LESLIE B. McGAW,
Retired**

**FOR FIRE
COMMISSIONER
DISTRICT # 16**



**30 YEARS IN THE
FIRE SERVICE**

CALENDAR OF EVENTS

SEPTEMBER

Key Peninsula Civic Center

1981

SUNDAY	MONDAY	TUESDAY	WEDNESDAY	THURSDAY	FRIDAY	SATURDAY
		1 Scouts 7:00 SR Bridge 7:30 GR	2 GAME NIGHT 7:30 Gym	3 Senior Society Potluck 12 noon - GR Volleyball 7:30 Gym Parkboard 7:30 Office KPCC Board 7:30 GR	4 Grange 6:30 GR	5
6 Lutheran Church Church School 9:30 Worship 10:30 AM	7 	8 Scouts 7:00 SR Bridge 7:30 GR KPCC EX. Board 7:30 Office	9 GAME NIGHT 7:30 Gym	10 Senior Society Potluck 12 noon - GR Volleyball 7:30 Gym State Senate Public Meeting 7:00 GR Senior Soc. Lounge Sale	11 Lake Minterwood 8:00 GR Senior Soc. Lounge Sale 10:00 a.m.	12 Senior Soc. Lounge Sale-10:00 a.m.
13 Lutheran Church Church School 9:30 Worship 10:30 AM	14 Square Dance Lessons for Beginners 7:30 Gym	15 Scouts 7:00 SR Bridge 7:30 GR	16 GAME NIGHT 7:30 Gym	17 Senior Society Potluck 12 noon - GR Volleyball 7:30 Gym Cootiettes 7:30 GR	18 Grange 6:30 GR	19 Skirts-N-Flirts Square Dance 8:00 PM Workshop 8:30 PM Dance
20 Lutheran Church Church School 9:30 Worship 10:30 AM	21 Square Dance Lessons for Beginners 7:30 Gym Peninsula Bay Artisans 7:30 GR	22 Scouts 7:00 SR Bridge 7:30 GR	23 GAME NIGHT 7:30 Gym	24 Senior Society Potluck 12 noon - GR Volleyball 7:30 Gym	25 Fire Dept. Reception 6:00 p.m. GR Lake Minterwood General Membership 7:30 p.m. VFW Room	26 Twilite Dance Club 9:00 PM
27 Lutheran Church Church School 9:30 Worship 10:30 AM	28 Square Dance Lessons for Beginners closes 7:30 Gym KPAA 7:30 Office	29 Scouts 7:00 SR Bridge 7:30 GR	30 GAME NIGHT 7:30 Gym Land Use Planning 7:30 VFW	Be sure to attend the State Senate Hearing-Sept.10-7pm		