

**The NEWS visits
Olympia in session
..... p.8**

Key Peninsula NEWS

Non-profit Org.
U.S. Postage Paid
Permit No. 2
Vaughn, WA 98394

Box Holder

Volume 17 Issue 5
Circulation 6000

**February 27
1989**

Working together for the social and economic good of our Key Peninsula



Mike Salatino, co-chairman of the 1989 Pioneer Days Centennial Celebration, starts things rolling by selling the first raffle ticket to Ryan Falk, winner of last year's raffle. Ryan's dad, Lee Falk, looks on. First prize for this year's raffle is an expense paid trip for two to Disney World.

Photo courtesy of Mike Salatino

Pioneer Days Centennial Celebration underway

by Rick Oldenburg

This year, Pioneer Days will help the State of Washington commemorate its 100th Birthday and will return to the pioneer roots that settled the Key Peninsula more than four generations ago. More activities for teens are being planned this year, plus a visit from Ohop Valley's Pioneer Farm which will bring 60 activities including toys, foods, clothes you can try on, tools, crafts, canoe-making and salmon exhibits.

The Pioneer Days committee has come up with a first-class raffle prize that befits the magnitude of this year's celebration. First prize winners will visit

America's greatest family resort - Orlando, Florida, with a round-trip ticket for two, rental car while there, passport to Disney World, Magic Kingdom and Epcot Center, plus a week's worth of bonuses. It's a prize you can enter your name for right now.

Second prize is a truck-load of firewood (4-5 cords), and third prize is a beautiful new VCR. Tickets are on sale around the Key Peninsula and are available to sell as a fund-raiser by your own favorite group. Call 851-4556 for details.

All-in-all, nineteen committees are forming to make the Pioneer Days Centennial Celebration this August a grand success.

Gas stations will be hard-pressed by new laws

by Keith Stiles

The business of selling gasoline for use in cars and trucks is getting more and more difficult and less profitable, and the situation is going to get worse, particularly in the outlying areas such as the Key Peninsula. That's the opinion of several station operators contacted by the NEWS when we called to discuss the new laws

that will be taking effect over the next few years.

According to the station operators, those stations that survive will have to charge considerably more for gasoline in the future as a result of expected higher taxes, both state and federal, and the cost of new required insurance and equipment to prevent leaking from underground gasoline storage tanks. New gas taxes

Fire Commissioners appoint study committee for ALS ...

**Department faces financial belt-tightening
in next two years**

by Keith Stiles

A committee study approach will help clarify the options and financial possibilities for Advanced Life Support ambulance service and provide for a wider range of public input. That's the conclusion that Fire District 16 Commissioners came to at their regular meeting February 21, as they appointed a seven-person citizens group to study the questions relating to private vs. public ALS ambulance service for the Key Peninsula. In the hope that such a move would allow better public input opportunity and a better measure of public attitudes, the Commissioners charged the group with the responsibility to investigate actual district needs, evaluate how the system is working now, consider alternative ALS systems and costs, and make a report back to the Commissioners by May 21 or sooner.

A specific duty of the committee will be to attempt to sample representative community opinion on ALS matters, with particular regard to the attitudes of area taxpayers.

In appointing the members of the committee, the Commissioners attempted to select representatives of each area of the Key Peninsula plus other representatives who could offer both business and professional medical advice. Board President Duane Fleming announced the committee appointments as follows: Mel Oliver, north end; Randy Car, south end; Bill Evans, Home; Marty Pedersen, Herron Island/Firefighters Association; Don Tjossem, Key Penin-

sula Business Association; Wayne Davis, central area/Shepard Ambulance, and the writer, representing Vaughn.

In other Fire Department business, Chief Horrace Kanno announced that updated tax projections from Pierce County have been received and that the Fire District will have about \$28,000 less to spend in this calendar year than had been hoped for. The projections also show that in calendar 1990 the Department will have to make do with about \$84,000 less. The Chief indicated that the 1989 shortfall might be handled without too much pain, but that the loss of \$84,000 in 1990 may force some difficult decisions.

Even while confronted with the loss of some hoped-for revenues, the Commissioners heard testimony about remodeling needs at the main fire station in Key Center and the increasing problems in trying to maintain facilities at aging Station 4 in Longbranch.

Also on the far horizon of Washington State politics, but perhaps headed our way, the Chief reported that a bill currently before the legislature in Olympia concerning Fire District funding might require that Pierce County consolidate its 26 fire districts into a maximum of 10. According to the Chief, this is the type of bill that would have to go to the people of the state for a vote before becoming law. But should it happen, our Fire District 16 just might end up consolidated with District 5, currently serving Gig Harbor and the surrounding area north of the Narrows Bridge.

might come during 1989 some say, but one certainty is a law already on the books that will require station owners to prove that they have adequate insurance or finances to cover the costs of up to \$1,000,000 for a major gasoline leak or spill. That law kicks into effect October 1990.

By 1998 all stations will have to have tanks that won't corrode, leak detection systems, and gasoline spill prevention

equipment. Estimates place the cost of all of this at between \$80,000 and \$200,000 for a single station. One of the great concerns is that stations in rural areas, such as ours, do not have the volume of business to pay these costs and they would have to close. Here on the Key Peninsula there were six gasoline stations two years ago; two have closed their gas sales and observers see difficult times ahead for some of the remaining four.

Key Peninsula NEWS

PO Box 3, Vaughn, WA 98394

884-4699

Published twice monthly by
Key Peninsula Civic Center Assn.

Mng. Editor: Karen Laatz
Ad Lay-out and Prodn: Ida MacWatters
Ad Sales: Linda & Dan Orme
Bookkeeper: Ruth Updike
Distribution: Arleen Lonning
Advisor: Pauline Finn

Staff Support Volunteers:
Marian Wagner, Sally Comman,
Linnea Lawson.

Contributors:

Lee & Keith Stiles, Daphne Daus,
Dory Meyers, Paul Cyr, Dr. Wm.
Roes, Stella Retherford, Elaine
Forch, Janice McMillan, Hugh
McMillan, Mary Ann Huntington,
Cecil Paul, Margaret Paul, Jean
Humphreys, Tony Brentin, R.
Marvin Keizur, Linda Barkas.

The opinions expressed are the
opinions of the writers and do not nec-
essarily reflect the views of the pub-
lishers or the staff.

A twice-monthly non-profit news-
paper, distributed free to all residents
in the Key Peninsula area, supported
by local merchants' advertising and
staffed largely by volunteers. All
proceeds go toward the programs of
the Civic Center.

KP NEWS Deadline

The next issue of KP NEWS will
come out on Mar 13. Please note the
deadline for notices, articles and ads
for that issue is Monday, Mar 6.

Join Community House's "Do it Yourself's"

At Community House in Home there
is a class called "Do it Yourself" which
encompasses oil painting, sketching, cro-
cheting, calligraphy and just about any-
thing one might want to bring and do.
Mary Seidelman guides this class and
invites people to come and join in on
Monday from 1-4 pm. Call Mary at 884-
2448 if you have any questions.

To the Editor

To the Editor:

I wish to call the attention of your
readers to a new petition, Number RH
2493, which has been filed recently with
the Federal Communications Commis-
sion in Washington, DC. It is my under-
standing that, if granted, this petition
would effectively stop all broadcasting of
religious worship services on television
and radio in the United States.

I urge the readers to become familiar
with this petition, and to contact the Fed-
eral Communications Commission at
1919 H Street, Washington, DC 20054
regarding their feelings on the matter.
Stanley A. Stemp, Home.

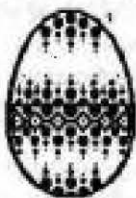
To the Editor:

It was recently announced on the
news that all paper products that are
bleached white contain dioxin. Dioxin is
a manufactured by-product of various
processes and is considered one of the
most toxic chemicals in existence. The
early-on victims of dioxin were Viet Nam
military personnel who were exposed to
2,4,5-T, or agent orange as it was called.
Now the entire population in the United
States has been exposed through bleached
paper products, including milk cartons,
towels, toilet paper, plates, etc., etc. The
industry claims that the public will not
buy brown paper products. What is your
opinion?

Dory Myers.

Civic Center Easter Egg Hunt

by Rick Oldenburg



Three age groups of Key Peninsula
children will vie for colored eggs, prizes
and candy during the annual Key Penin-
sula Civic Center Association Easter Egg
Hunt on Sunday, March 26, at 1 pm.

Children three and under, four to six,
and seven to eleven will hunt for the
goodies in different areas on the Civic
Center grounds (no EGGS-ceptions).
Hunters will gather in the Civic Center
gym prior to the start and SHELL come
equipped with a basket, sack or some
other means of holding their booty.

The hunt will begin EGGS-exactly at
1 pm. Cookies and punch will be served
by the Key Peninsula Civic Center Asso-
ciation at the conclusion of the event.

Only a CHICKEN would miss out on
the fun. Come early or the YOKE will be
on you (not to mention the empty bag
you'll be left holding!)

We the People

by Paul Cyr
Council member
District 7



As a follow-up to last month's col-
umn, I am sure you have been reading
about the most recent land use issues
affecting the Key Peninsula area. A group
of local citizens is trying to focus on
developing interim guidelines to protect
portions of the Peninsula currently zoned
General Use. These interim measures
would allow time for a more comprehen-
sive look at land use planning. As you
know, other subareas of Pierce County
are looking at development of what has
been termed "subarea plans." These
subarea plans will necessitate support
from the Planning and Natural Resources
Department staff. The Summit-Waller
area Subarea Plan is currently being stud-
ied by the Council's Planning and Public
Works Standing Committee. This was
the first subarea plan to be developed and
the process has taken about 13 months to
date. If Key Peninsula is to develop a

subarea plan for the entire Key Peninsula,
it will need to set up a formal request to the
Planning and Natural Resources Depart-
ment and "get in line" behind other com-
munities that have already requested
subarea plan development. The process is
complex and entails numerous public
hearings within the designated area and,
typically, takes 12 to 15 months to final-
ize.

An interim approach would seem
reasonable to address the "unprotected"
areas on the Key Peninsula. As small
groups of local citizens develop the in-
terim guidelines, those guidelines will
receive a full public airing before any
Council action takes place. This effort is
a more focussed process dealing with a
portion of the Key Peninsula currently
zoned General Use. This is not a full
subarea plan and is interim in nature until
a Comprehensive Plan can be worked out.

As these plans develop, I encourage
you to learn more about the interim meas-
ures. One way to do this is to attend one
of my monthly forums on the fourth
Monday of each month. The next com-
munity forums will be February 27 and
March 27.

Ain't Earth Sweet?

(sung to tune of "Ain't She Sweet")

Ain't Earth sweet?

Just to feel beneath your feet,
now I ask you what's the use of
paving it?

Ain't Earth sweet?

Don't pave that road
don't make a highway,
drive safe and slow
enjoy the byway.

Ain't Earth sweet?

Don't progress to our defeat
now I ask you think environmentally
ain't Earth sweet?

Evergreen Friends, 1989

Free tax ad-vice offered

The Volunteer Income Tax Assis-
tance (VITA) program is offering infor-
mation and volunteer help at the District
16 Fire Station in Key Center. VITA
volunteers will be available to provide
assistance every Thursday until April 13,
1989, from 9 am to 5 pm and again from
6 pm to 9:30 pm. Call 884-2222 for more
information.

The VITA program is designed to
help low-income, elderly, non-English
speaking or handicapped taxpayers fill
out their tax forms. Those requiring assis-
tance should bring their IRS tax package,
wage and earnings statements (form W-
2), interest statements, a copy of last
year's return if available and any other
relevant information.

The AARP program "Tax Assis-
tance for the Elderly" will also be offered
free by Jackie Higbee on Thursdays from
1 to 5 pm at the fire station. Jackie can be
contacted at 884-4367.

News from Scout Troop/Team 252

A Court of Honor was held February
10 at the Key Center Ward of the LDS
Church on Key Peninsula. Scout Master
Vince Nelson II presented awards and
advancements during the ceremony to:

David Beckstead - Citizenship and
Family Living skill awards, and Boy
Scout and Tenderfoot badges.

Jeremy Beckstead - Communication
Skill award, Citizenship in the Nation and
Communication merit badges, plus ad-
vancement to Life rank.

Ryan Davidson - First Aid merit badge
and advancement to 1st Class.

Christian Foster - 3-year Service Star
and Attendance bar, and advancement to
Star rank.

Jake Frame - 3-year Service Star and
Attendance bar.

Patrick Green - 2-year Service Star and
Attendance bar.

Donald Nelson - Emergency Prepared-
ness merit badge.

Vince Nelson II - Communications Skill
award, Citizenship in the Nation and
Communications merit badges.

Adult leaders receiving recognition
were:

Duane Foster - 3-year Service Star; **Paul
Beckstead** - 4-year Service Star and
Shirley Frame - 6-year Service Star.

A special Troop Advancement Gold
Medal was presented to **Jeremy Beck-
stead** for having achieved the greatest
amount of merit badges and advance-
ments during the past year.

The troop meets each Wednesday at
7 pm at the LDS Church building across
from Macon Bacon. All interested scout-
ers are welcome.

Dr. Penrose Orthopedic Guild's Dessert Theater, March 11

"Growing Pains," an absorbing play complete with heart, life, humor and tragedy, and based on actual Washington history, will be sponsored by Dr. Penrose Orthopedic Guild on Saturday, March 11 at 7 pm at the Civic Center, Vaughn. A great assortment of desserts will also be served.

Come and celebrate Washington's Centennial with your friends by watching a production by Solstice Performance Arts of Tacoma, which depicts the lives of stars from Washington's past: Elisha Ferry, friend of Abe Lincoln and Ulysses Grant, sent out to govern the unruly collection of pioneers that preceded us;

Emma Smith Devoe and May Arkwright Hutton, who both believed whole-heartedly in the vote for women, but on how to get it and almost everything else - fur flew between them; and John Bolander, construction foreman for the Northern Pacific Railway. The magic of their stories will entertain you mightily. Discussion with the actors/characters following the play adds a special dimension to the evening.

Tickets are \$10 and may be purchased from a Guild member, Joyce Tovey at Colony Realty in Key Center, or call Virginia Thompson at 884-2588.

Cootiettes 609

by Mavis Zacek

Cootiettes Pen-Ants 609 have recently elected officers for 1989. They are: Lenore Jameson, Chief Gray Back; Linda Reed, Lady Louse; Michelle Rikansrud, Baby Louse; Ellen Dailey, Pious Louse; Alice Palmer, Crummy Chaser; Evelyn Stinson, Shekel Keeper; Bea Gomsrud, Louse Hunter; Mary Seidelman, Rustling Louse; Coretta Van Antwerp; Maureen Taylor and Mavis Zacek, Tightwads. Lenore Jameson was elected Chief Gray Back for a second term and as a result all general committees will remain as for 1988.

Make your own fruit tree!

A grafting workshop will be held March 11 at Sunnycrest Nursery in Key Center from 11 am to 1 pm to demonstrate how you can "make your own fruit tree for \$1."

Aaron Hayes from the Peninsula Fruit Club will be on hand to demonstrate the grafting process. He will also answer questions on pruning and general culture. You can graft your own fruit tree by purchasing a root stock and choosing from the several hundred varieties that Aaron will have with him. For more information call Sunnycrest at 884-3937.

The Gary Wyatt Display comes to Peninsula High

Peninsula High School's Choir and Razzmatazz invite the public to attend the Gary Wyatt Display group performing with the students in the Milton Boyd Auditorium on Sunday March 5, at 3 pm.

Gary Wyatt is a gifted musician who gave up a career with the Los Angeles Lakers to pursue his music. He will be at the High School March 1-3 working with students and teaching them some of his music, including his new release, "Continuc."

Advance ticket sales will be available at the school March 2 and 3, and at the door on the 5th. Cost is \$3.00 and proceeds will go to benefit the choirs.

Installation of officers is planned for March 16 following a pot luck dinner at 6:30 pm. Guests from sister organizations around the Peninsula area are expected.

Future plans include the Spring Crawl in Ellensburg on April 8 and 9. Many members plan to attend and arrangements must be made well in advance.

Cottessmore will be visited March 14, Retsil March 21 and the Naval Hospital at Bremerton. Members carpool at Key Center, always early enough to have lunch en route.

Peninsula High presents "Anything Goes"

The Milton S. Boyd Auditorium of Peninsula High School will be the scene of the school's winter musical, "Anything Goes" by Cole Porter, on March 2, 3, 4, 10 and 11 at 7:30 pm. Reserved tickets are \$3.50/ASB or seniors, and \$5.50 all others. Call 857-3541 to reserve seats.

Tacoma Totemaires to sing at Pantages

Tacoma Totemaires invite the public to their 1989 annual show on March 17 and 18, 8 pm, at the Pantages Centre, Tacoma. Guest quartets, "Easy Street" and "The McKenzie Touring Company," the Commencement Bay Sweet Adelines and the 1989 Daffodil Queen and her court will headline the show. Reserved seats are \$10 and \$8 and may be purchased from Ticket Master, the Pantages Centre, or by calling 752-5135 in Tacoma.

The Tacoma Chapter of the Barber-shop Harmony Society is a non-profit organization which has helped provide speech therapy for children of the area, amongst other projects.

Peninsula movings and shakings.....

Wednesday, March 1 ...

Respite Care meets from 9 am to 4 pm in the Brones Room, KC Library.
Community Center, Home has hot lunch for seniors at noon.
Lions Club meets at the Huckleberry Inn at 7 pm.

Thursday, March 2 ...

KP Senior Society potluck lunch at noon in the Gold Room, KPCC.
Bear Den 3 meets in Scout Room, 3:30 to 5 pm.
Diabetic Support Group for diabetics and families meets at KP Health Center at 7 pm.
Citizens Against Crime meet at 7 pm in the Gold Room, KPCC.
Peninsula High presents Cole Porter's "Anything Goes" at 7:30 pm. Play will run March 3, 4, 10 and 11.

Friday, March 3 ...

KP Business Assn. meets at The Eatery, 7:30 am.
Upper Sound Grange 705 Valentine potluck, 7 pm, KPCC. Guest speaker: Moores Davis, BeeKeeper.
Family Recreation Night at Longbranch Improvement Club, 6 to 10 pm.

Monday, March 6 ...

Senior Society Board meeting at KP Civic Center, 10 am.
Webelos Fox Patrol meets in Scout Room, 7 to 8:30 pm.
Al-Anon meets at Longbranch Improvement Club, 7 to 8 pm.
VFW and Auxiliary meet at 7:30 pm in VFW Room, KPCC.

Sunday, March 5 ...

Peninsula High Chorus and Razzmatazz together with the Gary Wyatt & Display Concert, 3 pm, Auditorium. Benefit for the choral groups.

Tuesday, March 7 ...

Peninsula Social Club Potluck, 6:30 pm, Longbranch Church Hall.
Wolf Den 4 meets in Scout Room, 3:30 to 5 pm.
TOPS weigh in at 6:15 pm, meet at 7 pm, Vaughn Church.

Wednesday, March 8 ...

Respite Care meets from 9 am to 4 pm in Brones Room, KC Library.
Community Center, Home has hot lunch for seniors at noon.
Peninsula Neighbors Craft Club meets at 10:30 am at Longbranch Church.
Key Center Friends of the Library present "A Celtic Interval with the Shanachie" at 7 pm.
KP Park Board meets at KPCC at 7:30 pm.

Thursday, March 9 ...

KP Senior Society potluck lunch at noon in the Gold Room, KPCC.
Survivors meet at 2 pm in the Brones Room, KC Library.
Bear Den 3 meets in Scout Room, 3:30 to 5 pm.
Dr. Penrose Orthopedic Guild noon meeting at home of Virginia Thompson
KPCCA Board meeting, 7:30 pm at KPCC.

Friday, March 10 ...

Family Recreation Night at Longbranch Improvement Club, 6 to 10 pm.

Saturday, March 11 ...

Dr. Penrose Orthopedic Guild's Dessert Theater presents "Growing Pains" - 7 pm, KP Civic Center.

Grafting Workshop, "Make your own fruit tree," at Sunnycrest Nursery 11 am.

Monday, March 13 ...

Webelos Fox Patrol meets in Scout Room 7 to 8:30 pm.
Al-Anon meets at Longbranch Improvement Club, 7 to 8 pm.

Dates to mark on your calendar:

Sunday, March 26 ...

Easter Egg Hunt for children at 1 pm on Civic Center grounds

In the Library

"A Celtic Interval with the Shanachie" a talk given by David McCourt, a faculty member at Everett Community College, will be presented at 7 pm, March 8, at the Key Center Library. The presentation is sponsored by the Friends of the Key Center Library and is part of "The Inquiring Mind: A Forum in the Humanities," a speakers' program available from the Washington Commission for the Humanities. In "A Celtic Interval with the Shanachie," Mr. McCourt, an American of Irish ancestry, intermixes Irish folktales, humor, ballads and songs of "resistance and rebellion," to create a modern day Shanachie, the storyteller-historian whose skills and voice are legendary.

The Washington Commission for

the Humanities is a statewide non-profit organization supported by the National Endowment for the Humanities and local contributors, including Friends of the Humanities. WCH makes grants to support programs that foster public use and understanding of history, literature, ethics and other fields of the humanities.

Admission to the talk is free and open to the public. A Friends business meeting will be held at 6 pm.

**Reminder: Preschool storytime for ages 3 to 5 will continue through March 24 at the Key Center Library, each Friday at 10:30 am.

Library Hours:

Tuesday & Wednesday 1-8:30
Thursday & Friday 1-6
Saturday 12-4

Is your new car a lemon?

by F. Michael Misner, Atty.

In a 1984 study by the Federal Trade Commission it was concluded that 33.6% of all new cars in the United States had problems covered by the car's warranty. Given these statistics and the tremendous cost and inconvenience to the public, the Washington Legislature, in 1987, passed RCW 19.118.010-902, the new car "Lemon Law."

The Washington act is modeled after a Connecticut law which was the first such legislation in the nation. Our statute now provides protection for the consumer when dealing with the car's manufacturer, either foreign or domestic.

Your new car is a lemon if:

1. A serious, life-threatening defect was not remedied within two attempts to repair.
2. A defect which alters the use, value or safety has not been remedied within four attempts to repair;
3. Notice to the manufacturer, or its authorized representative, was made within the warranty period. The warranty period can be no less than one year or 12,000 miles from the date of purchase. Depending on the circumstances, the period may be as long as two years or 24,000 miles from the date of purchase.

If the manufacturer cannot fix the problem after a reasonable number of attempts, the manufacturer, within forty

calendar days of the consumers's request, shall, at the option of the consumer, replace or repurchase the car. This is a tremendously powerful tool for the new car owner. If the owner decides to return the car, the manufacturer must refund the purchase price as well as other expenses incurred, such as towing charges or rental expenses incurred during the repair attempts. The manufacturer may offset these costs with a charge for reasonable use. If the manufacturer insists that the problem has been solved, the consumer may demand a hearing before an arbitration board.

The Attorney General's office indicates that the Lemon Law has proved successful and that more consumers are seeking its protection.

MARY KAY

WE TEACH SKIN CARE

Mary Kay has a proven-effective skin care program for you.

Call today!

Professional Mary Kay
Skin Care Consultant

Betty Coons, R.N.
(206) 857-6041



Members of Mrs. Freeman's class at Minter Elementary School gather round a demonstration salmon hatchery set up in the school courtyard by Washington State Fisheries representatives. Students will observe development of the young fish and eventually help release them into Minter Creek. See related story on page 12.

Photo courtesy of Ken Retherford.



PURDY BARBER & HAIR DESIGN

Purdy Shopping Ctr., Purdy WA

857-5064

coupon

BOOMERANG - LOOP - SPIRAL PERMS

only \$34.95

Haircut & Style Included

one coupon per service

exp. 3-11-89

coupon

SAVE \$1.00

ON ANY HAIRCUT OR STYLE

one coupon per service

exp. 3-11-89

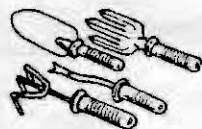
Spring at Sunnycrest.....



THINK LETTUCE & LOBELIA...
THINK BROCCOLI & PETUNIA...

SOW YOUR SEEDS NOW

We have all the supplies
Vegetable & Flowers Seed,
Seed Starting Soil
Mini Greenhouse • Furniture • Peat Pots
" Make Your Own Fruit Tree for \$1.00"

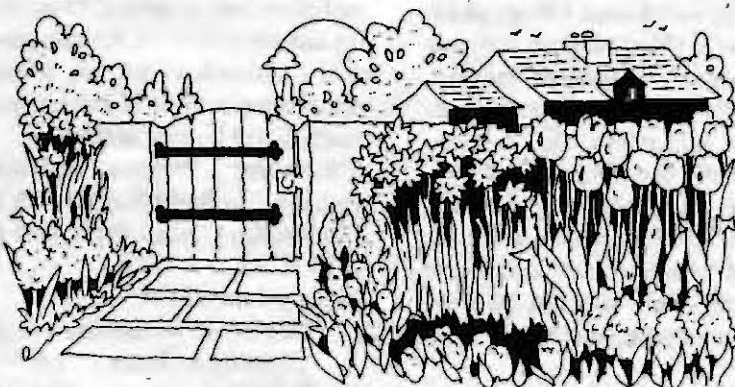


A Grafting Workshop

Aaron Haynes from PENINSULA FRUIT CLUB

will be here on March 11th: 11am - 1pm

Demonstrating the grafting process - you can do
your own - only \$1.00 - choose from Over 200 varieties



FRESH, NEW, NURSERY
STOCK
ARRIVING DAILY

START YOUR SPRING LANDSCAPING

- Premium quality trees & shrubs
- J & P ROSES - tree & miniatures
Redi-to-plant
- Perennials - Exciting new ones & all the old favorites
- Summer Blooming Bulbs • Dahlias, Lilies, Begonias



BONSAI CLASS

APRIL 1st - 10am-12pm

\$10.00 includes plant

Sam Momii will be here to
teach you the basics of this
beautiful Japanese Art form.

Class is limited

884-3937 OPEN EVERY DAY



Located in Key Center



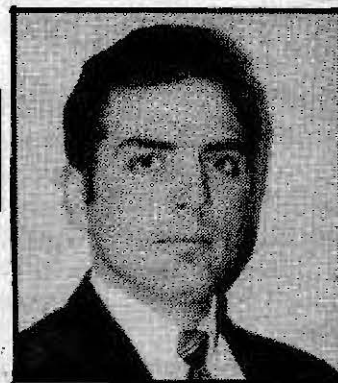
5110 LACKEY RD. KPN

VAUGHN

884-2144

FROM YOUR CHIROPRACTOR

Dr. Robert B Campbell D.C.
CHIROPRACTIC SPINAL CARE

X-RAY FACILITIES ON LOCATION
WE STILL MAKE HOUSECALLS


FREE
HEALTH PASS
 ARE YOU IN
PAIN?
 SUFFER FROM INJURY?

If you think you have to live with

PAIN**Think Again!****NEW INSURANCE POLICY**

We are dedicated to the delivery of chiropractic care to everyone who needs it. After all, what good is a doctor if you can't afford his services? Most insurance assignments accepted as payment in full. This means little or no out-of-pocket expense to you!

THINK SAFE

1. Chiropractic First
2. Addicting Drugs and Narcotics Second
3. Potentially Dangerous Surgery Last

**NOW ... Most Insurance Assignments
 Accepted as Payment in Full.
 Most Insurances Accepted**

**IF YOU HAVE QUALIFYING INSURANCE,
 WHATEVER YOUR INSURANCE PAYS WILL BE
 PAYMENT IN FULL FOR YOUR TREATMENT**

SPECIALIZING IN:

- CHIROPRACTIC MANIPULATION
- WHIPLASH
- WORKERS COMPENSATION
- CERTIFIED SPINAL COLUMN STRESSOLOGIST
- PERSONAL INJURY
- EMERGENCY SERVICE
- SPINAL & DISC CORRECTION & REHABILITATION

DIPLOMAT - NATIONAL BOARD OF CHIROPRACTIC EXAMINERS

**OPEN
 7 DAYS
 A WEEK**

**WE'RE
 HERE
 WHEN
 YOU
 NEED
 US**

ANNOUNCING OUR FAMILY PLAN

NO INSURANCE? NO PROBLEM!! READ THIS!!!

We are pleased to inform you that we now have a financial plan in place for patients who have no insurance coverage of any kind for Chiropractic care and also for patients who have exhausted their insurance coverage for the year. The plan works this way:

One Family Member	\$55.00 per month
Two Family Members	\$65.00 per month
Whole Family	\$75.00 per month

The plan covers adjustments only. Any x-rays, exams or supports during the month would be an additional charge. Also, as you get better and your adjustments decrease during the month you would pay your monthly rate or \$20.00 per visit, whichever is less. If you don't come in during the month, no charge. Not good with any other offer.

Please call if you have more questions. Also check the KP NEWS to save on exams and x-rays!

First Run

by Linda Barkas

As I become accustomed to Peninsula life it seems odd that there is so little stability when it comes to reception of TV signals. It is daily a virtual unknown what I can expect from my set, or apparently anyplace in the community, at any given time.

At first I had only rabbit ears which quickly led to an indoor system of dangling wires, coat hooks and numbered sequential diagrams drawn to indicate the best wire path for reception of various stations - that is, 4, 5, 13 and 28, which are those I receive. (Radio is just as bad, but I won't go into that.) This became old rapidly and I felt sure a roof antenna was what I needed. When purchasing and erecting one, fortunately I had the foresight to utilize a swiveling pole, having heard of other people's systems. Indeed, by using the VCR as a tuner, with the aerial and the wire, the four stations could be reliably tuned (somewhat), if the mysterious apparent discrepancy in daily signal constancy is discounted. Yet nothing could entice the elusive 7, 9 and 11 which seem to have weakened some time ago. (The non-existence of cable cannot be discussed rationally at this time.)

The mystery has not completely unfolded. Besides the unanticipated daily fluxuations, why is it that not far from here a totally different band of stations is seen? Who are the barely visible denizens of channels 2 and 8? And what can we expect from the static on channel 98?

Who is responsible for defending this technology?

The answer to lousy TV programming may lie in part with camcorders. The luxury of the camcorder, as every housewife knows, is that it allows the family to experience never a dull moment of reruns or broadcasts in questionable taste. For, after previewing the evening's TV guide, the well-equipped mother will hoist camcorder and take to the field to personally tailor 1, 2, 3 or however many hours of broadcast needed to replace unworthy scheduling so that she can be assured her family will have wholesome viewing for the evening.

Peninsula mothers might even want to initiate tape swapping through the library so every home will have a chance to view local events such as bass seeding at Jackson Lake, sock hops at the elementary schools and coming events displayed on the Civic Center marquee. In fact I would do it myself if any conscientious mothers who haven't the resources want to inquire.

Rental videos don't necessarily solve the problem, as they may be objectionable to some viewers. But nonprofessional, public activities of local origin might be entertainingly and practically recorded by anyone with a camcorder, not to mention the potential for preserving irreplaceable family memories. And if you're not interested in doing your own tapes, you can still help create a market for a private system of distribution.



COMPLETE INCOME TAX SERVICE

Electronic Filing

Small Business

Tax Planning

1041, 1040X, 1040EZ

Computerized

Partnerships

Farms

Quick, Reliable, Convenient, Local

6706 Key Peninsula Hwy So.

Phone 884-3862 Anytime

PURDY TOPSOIL & GRAVEL

CALL US AND SAVE ON ALL YOUR LANDSCAPING NEEDS



- Topsoil
- Bank run
- Crushed Rock
- Bark
- Rockery Rock

857-5850

Next to Pierce County Shops at Purdy

KEY CENTER NATIONAL AUTO PARTS

COMPLETE LINE OF FOREIGN & DOMESTIC PARTS

DISCOUNT PRICES



KENDALL LUBRICANTS

HOURS OPEN:

8:30 - 7:00 Mon - Fri

8:30 - 6:00 Sat

10:00 - 4:00 Sun

WAGNER BRAKE PRODUCTS



Machine Shop Service

884-3307



STIHL'S SPRING SAVINGS

011AVEQ T
WITH 16" BAR & CHAIN
SAVE 45.00
REG. 249.95
\$209.95

028WB SUPER
WITH 20" BAR & CHAIN
SAVE 45.00
REG. 409.95
\$349.95



STIHL'S SPRING SAVINGS BONUS!
SAVE UP TO 104.05*
WITH PURCHASE OF STIHL TOOLKAN™ KIT.
TOOLKAN KIT 24.95

KIT CONTAINS TOOLKAN™ EXTRA CUTTING CHAIN
EAR PROTECTORS, ENGINE OIL AND MANY
USEFUL TOOLS.

*SAVINGS BASED UPON PURCHASE OF
028AVEQ SUPER WITH TOOLKAN™ KIT
KIT AVAILABLE
UNTIL MAY 31,
1989

024AVEQ WB
WITH 18" BAR & CHAIN
SAVE 50.00
REG. 349.95
\$299.95
SALE PRICES END MAY 31, 1989

SPENCER POWER EQUIPMENT
Complete Small Engine Sales & Service

9:00 - 5:30 M-F
9-4 Sat.

275-2211

N.E. 22451 Hwy 3
Bellevue, WA
(Near South Shore Turn Off)

Tax Tips

by R. Marvin Keizur

How to get ready for your tax preparer.

Hiring a tax professional to prepare your tax return doesn't mean you can forget about your taxes until your return is complete. Your help is essential so that your preparer can save you the utmost money. Ways you can help are:

1. Collect your tax records - W-2's and 1099 information; don't bring a shoebox full of unorganized receipts, that will waste valuable time; organize your receipts by category, organize your checks in the same way.
2. Use an organizer if available, your tax preparer should be able to furnish this.
3. Don't wait until the last minute to make an appointment with your preparer. Remember April 17 gets here fast.
4. You should feel comfortable with your preparer.
5. Familiarize yourself with the basics of

tax law so that you can understand the tax preparer's questions.

6. Bring your expense diary.
7. Bring last year's return (unless you are going to the same preparer as last year).
8. Ask questions.
9. Use a tax preparer-accountant who is available the year-round. You may need advice or help during the year.

Business Briefs

Specializing in individual and group life and health insurance, and providing financial and retirement planning, Campen and Associates Financial Services have opened an office at 14007 Lakeview Way, N.W. (Lake Holiday area) to serve Peninsula residents. Their business hours are from 9 am to 7:30 pm and the telephone number is 884-9028. Cary L. Campen, owner or Judy Dryden, office manager will welcome inquiries.

Obituaries

It is with deep regret that we announce the deaths of our Peninsula friends and neighbors...

Albert Joseph Bergstrom, 86, of Lakebay, died February 9, 1989. Mr. Bergstrom had been a machinist at the naval shipyards in Vallejo, California prior to coming to the Peninsula area and was a member of Longbranch Community Church. He is survived by sons Albert Edwin Bergstrom of Lakebay and Eric Lawrence Bergstrom of Napa, California; a brother Oscar Adolph Bergstrom of Napa, and three grandchildren also of Napa.

Services were held February 14 at Longbranch Community Church, followed by interment at Longbranch Cemetery next to his wife, Elizabeth.

Robert M. Steele, 57, died on February 19, 1989. Mr. Steele was a Lake Holiday resident, and had been a warehouseman for West Coast Grocery for 24 years. He was an army veteran of the Korean conflict, a member of Gig Harbor Eagles, a past member of the Big Brothers Association, past president of the Lake Holiday Association and active in community service for the Key Peninsula Community Center. He was also a past president of the Jessie Dyslin Boy's Ranch where he spent many childhood years.

Mr. Steele leaves a wife, Marilyn, of the home; stepdaughters Cathy Young of Oregon; Sherri (Mrs. James) Smith of Puyallup and Debbie (Mrs. Ron) Simon of Lakebay, and seven grandchildren. Services were held on February 23 with arrangements by Haven of Rest. Remembrances may be made to Jessie Dyslin Boy's Ranch.

Continuous Pre-Painted Aluminum Gutters & Downspouts

- Residential
- Commercial
- Mobile Homes

OLYMPIC GUTTER CO.

275-5557

P.O. Box 134

Call Now For Free Estimate

Allyn, WA

FOCUS
21
HAIR & SKIN CARE PRODUCTS

20% OFF

ON THE ENTIRE

FOCUS 21

LINE OF

FINE HAIR CARE PRODUCTS

Ann's

BEAUTY & SUPPLY

851-8811

5109 Pt. Fosdick Dr., Gig Harbor
In Olympic Plaza Next to Dairy Queen



Tom Fifer's

Key Stitch Upholstery
884-9288

YOUR KEY TO FINE UPHOLSTERY

We are not just in the upholstery business

- We can RESTYLE your old comfortable furniture
- It will RETAIN its familiar comfort yet look brand new

Mon., Tue., Wed., Fri., Sat.
10 am - 5 pm
CLOSED Thursday

Free pick-up & delivery
Free, firm estimates

Just one mile North of Key Center on 101 St. Ct., off SR 302

Car, Truck, Trailer Service

- Foreign & Domestic Cars Repaired
- Brake Drums and Rotors Turned
- Box Trailer Rebuilding
- Engine Overhauls
- Tractors & Heavy Equipment Service
- Large Truck Engine Service
- All Work Guaranteed
- 23 Years of Experience

M & M AUTO REPAIR

NEW LOCATION

15125 State Road 302

1/2 mile north of Key Center

Hours: 8am-6pm, Mon.-Sat.

Allan Mowatt

884-2788

Festive flowers in a glorious and colorful array... make them part of your wedding plans.

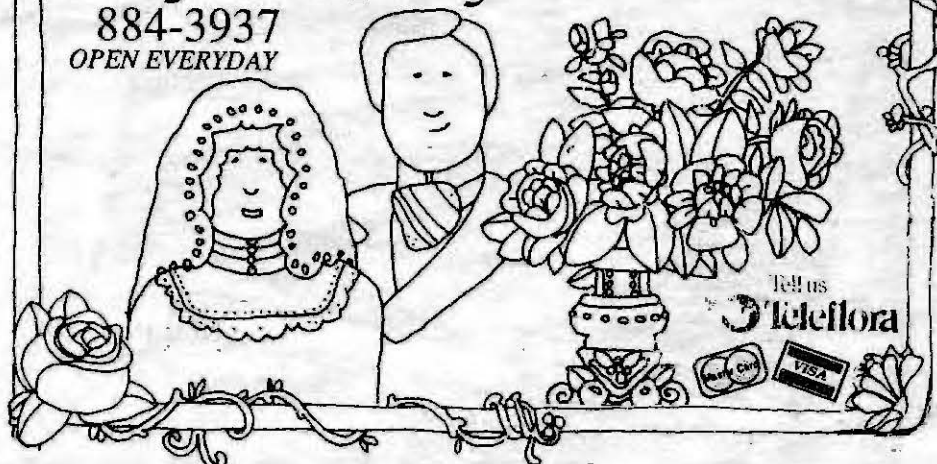
For the bride...for the church...for the reception, flowers are an essential ingredient to a truly beautiful and memorable ceremony. Celebrate your wedding with our elegant and fragrant floral arrangements.

- Mixed bouquets and arrangements • Silk flowers
- Master Charge® and Visa Welcome
- FTD • Florafax

Sunnycrest Nursery

884-3937

OPEN EVERYDAY



Tell us
Teleflora

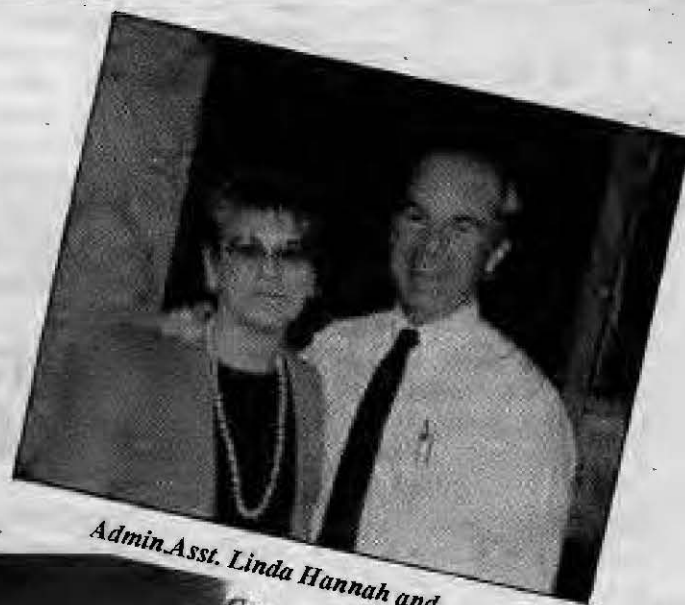


The NEWS visits our representatives in Olympia !

With the legislature in session it is a busy time for those we have elected to represent our interests, and for our friends and neighbors employed at the Capitol for the session.



Left to right: Rep. Wes Pruitt; Daphne Daus, Admin. Asst. to Wes and KP's Park Board president; Admin. Asst. Linda Hannah of Gig Harbor; Page Gretchen Showalter, daughter of Mr. and Mrs. Lars Showalter of Longbranch, and Rep. Ron Meyers.



Admin. Asst. Linda Hannah and Governor Booth Gardner



Jeanette Haynor, R. Majority Leader/Washington State Senate and Bill Smitherman, D., State Senator from 26th District.



Daphne Daus, Admin. Asst. to Wes Pruitt



Reps. Ron Meyers and Wes Pruitt

KP NEWS photos

by

Lee Stiles



Avon Gay, well-known as an activist on Key Peninsula, is working as a receptionist for the legislature this session.



Mary Ann Huntington of Port Orchard talks to a visiting Cub Scout group at the Capitol. Mary Ann is a tour guide while the legislature is in session.

**Blundell's Longbranch
Chowder House**

884-4161

5212 Key Pen. Hwy.
Longbranch, WA

Located in Key Center

884-3937

MARY KAY**WE TEACH
SKIN CARE**Betty Coons, R.N.
(206) 857-6041

Tax Services Financial Statements Auditing Bookkeeping

6706 Key Peninsula Hwy. S
Longbranch, WA 98351Phone
(206) 884-3862*Key Stitch
Upholstery*

884-9288

14910 101 Ct. KPN

DJ'S MINI MART
MOBIL GAS

857-5712

13706 SR 302 Key Pen. Hwy N.

**DJ'S TIRE & CAR
CARE SERVICE**

851-4606

13712 S.R. 302 Key Pen. Hwy N.

WORDS GALOREWords Words Words
You write
I'll type
Words Words Words
884-4864**EASTER TREASURE HUNT**

Here's what you do:

1. Take this ad with while you shop on the Key Peninsula.
2. Visit 8 or more of the businesses listed here and have them stamp your ad -- no purchases necessary
3. When you have 8 to 15 validations on your ad, exchange it at any of the participating businesses for your

TREASURE EGGInside the egg is a certificate entitling you
to a gift or service from one of our members.There are over
\$2000 in gifts

4. Your name will be entered in the grand prize drawings - the more validations on your ad the "GRANDER" the prize.

**GRAND PRIZE DRAWINGS FOR A
TOTAL OF \$150 IN ADDITIONAL
GIFT CERTIFICATES**

Redeemable at any KPBA member business.

Entries with 8 validations eligible for drawing for \$50 gift certificate
Entries with 15 validations eligible for drawing for \$100 gift certificate**THANKS**for supporting your
Local Merchants
and participating in the
**EASTER
TREASURE HUNT**

Name: _____

Address: _____

Phone: _____

Contest ends March 26th
Winners will be notified April 7th**KEY CENTER
NATIONAL AUTO PARTS**

884-3307

DISCOUNT PRICES
Machine Shop Service**RED DOGS**Grocery, Bakery &
Video

"Open 5am-12 midnight"

884-4602

Key Center

**KEY WESTERN
BUILDING
CENTER**

Since 1971

884-2311

Key Center

**CAMPEN & ASSOCIATES
FINANCIAL SERVICES**Financial & Retirement Planning
Individual & Group Insurance

(206) 884-9028

TAC (206) 279-9272

14007 Lakeview Wy N.W. Gig Harbor, WA 98333

**SPINNER'S HEARTH
AND
COUNTRY STORE**

(FORMERLY THE ICE CREAM SHOPPE)

884-9000

Key Center

**The Country
Mouse**For your Cards
Gifts & Crafts

857-5399

Lake Kathryn Village

**Puget
Sound Bank**

Member F.D.I.C.

HOME TOWN BANK

884-9345

Key Center

**Myr-Mar Accounting
Service**

Call Marv Keizur

884-3566

Walt's Shop N Save

Lake Kathryn Village

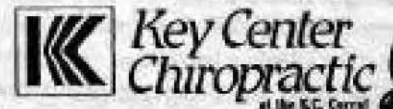
857-5362

Walt's Fine Foods

Key Center

884-3325

"For Optimum Health"



Kathy Stocker, D.C.

David Krympec, D.C.

884-3040

**HOME
COUNTRY
STORE**

884-2106

1309 KPN • Home, WA

John D. Olsson, D.D.S.

Key Center Family Dentist

"A sure cure for cowards"

884-9455

HAPPY EASTER

To Your Health

by Wm.F.Roes, MD



Probably the most common call to our office during flu season is about fever; when to treat and when to bring the patient in. That is not always an easy question to answer, but some guidelines may be useful. Fever is defined as an increase in body temperature of one degree (Fahrenheit) over normal body temperature. 98.6 is accepted as a normal oral temperature, so 99.6F orally is a fever. Rectal temperatures run one degree higher and axillary (armpit) temperatures run one degree lower. The best measuring device is a glass-mercury thermometer — the back of your hand against a child's forehead is notoriously inaccurate. The new electronic thermometers are pretty good and easy to read, but the "fever strips" are not reliable. Fever is caused by the release of chemicals from the cells of the body as a response to an infection. It is part of the body's immune response and some researchers feel that it is helpful in eliminating the invading bacteria or virus. On the other hand, fever increases the patient's discomfort, causes dehydration (increased fluid loss) and in young children

causes febrile seizures. For this reason we encourage the treatment of fevers.

One of the most important treatments is hydration, making sure the patient is taking in adequate liquids. We often recommend using tepid (lukewarm) baths for young children with high fever; as the water evaporates it cools the patients, but it shouldn't be too hot or too cold. Finally, there are medications useful for the reduction of temperature. Acetaminophen (Tylenol, Panadol, Datril) is the only one recommended for small children and is considered safe for all ages. It is available in drops, liquid, chewable tablets, and tablets. Aspirin is no longer recommended for children because of the question of Reyes Syndrome, but it is effective and safe for most adults. Ibuprophen (Advil, Medipren, Motrin) is also effective as a fever reducer for adults, but it should not be given if the patient is also taking aspirin.


Most fevers are related to mild viral illnesses which resolve with time and symptomatic treatments. Fevers which are high (over 102), prolonged (over two or three days), or are associated with severe symptoms should be evaluated by your health care provider. Last and not least, don't tell your doctor you don't have a temperature. Everyone has a temperature (usually 98.6) but not everyone has a fever.



Members of the Peninsula Seahawk girls' basketball team ... left to right, Head Coach Mary Ann Stoican; #32, Lisa Colvin; #10 Chrissy Skladany; #24, Karin Johannessen; #50, Kayla Newsome; #34, Nicole Bennett; #42, Kathy Delaney; #44, Mary Christofferson; #40, Tina Duren; #30, Marla Walker; and #20, Monica Hester. The team has had a very successful year which has put them in District Finals, being played off the last weekend in February. Photo courtesy of Peninsula High School.

GRADER SERVICES

RESIDENTIAL & COMMERCIAL



EXCAVATING
ROAD GRADING

SEPTIC SYSTEMS
ROAD GRAVEL

PHIL RADCLIFFE
884-2271
LAKEBAY

7411 CANON BELL DR.
STATE LIC#GR-AD-ES-234LM

Established 1972

Catch Of the day:

8.50%
8.77%

Annual Rate
Yield


Fresh from Puget Sound.

Our brand new one-year CD is a simple way to net big gains in earnings.

For starters, you can deposit as little as \$500. Your rate is guaranteed for a year, with no fluctuations. And your money is guaranteed safe, fully insured by the FDIC.

We also have a wide choice of other investments, including a Money Market Savings Account that pays one of the highest rates around the Sound.

So drop into any one of our 82 offices. And net some extra green.

 **Puget Sound Bank**

THE HOME TOWN BANK
Key Center Branch
9017 Key Peninsula Hiway
884-9345

Annual rate of simple interest, compounded quarterly. Substantial penalty for early withdrawal. Member FDIC.

Herron Inlet nominated for wetlands preservation

by Stella Retherford

Herron Inlet is being considered for preservation under the Puget Sound Water Quality Wetland Preservation program. Herron resident Mary Knackstedt has spearheaded the research and submitted the involved application forms. Ida Cox, owner of the estuary and much surrounding land, supports this move and local naturalists have accumulated the bird, animal and plant lists required. Herron Island resident Tim Clark walked upstream from salt water to the beaver ponds and did the mapping needed for the application.

The goal of wetland protection under the Puget Sound Water Quality Management Plan is "restoration and enhancement of wetlands in the Puget Sound Basin." The first step is to identify and evaluate the swamps and ponds which the agency terms "wetlands." Those considered important will be "secured" by Department of Natural Resources (DNR) funds. If deemed ineligible the Ecology Department and DNR will provide technical assistance to local organizations to preserve the area.

Brackish wetlands such as Herron Inlet are important as sheltered spawning grounds for many fish and provide a place where native life may exist protected from residential development. Birds of many species live part or all of their lives near the waterway; herons and eagles nest in old trees or snags near their food sources; Kingfishers' nest holes can be seen along the muddy estuary shores. This wetland is unique and, within a small area, offers access to several ecosystems. Evergreen Elementary teacher Cindy DiBiase and husband, Fran, have assessed the wetlands from an educational point of view. They agree it is a learning area for all ages. Each ecosystem offers students examples of such concepts as plant and animal communities, habitats, niches and adaptations. The inlet is an excellent example of an estuarine environment. Native chum salmon swim upstream in the late fall to spawn, although a culvert blocks their passage and prevents them from using more than the

lower reaches of Herron Creek. In that short stretch of about a thousand feet, 20 to 30 salmon carcasses were counted in January. How many more have been eaten by eagles or other scavengers is anyone's guess. If the full length of the stream up to the beaver ponds was a spawning area, one wonders how many infant salmon could be hatched to swim to Puget Sound waters?

The beaver dams retain a 20-30 acre fresh water wetland. A beaver family keeps the dams in repair and raises a litter each year in the beaver lodge. A housing development surrounds the pond, but the residents have expressed a desire to retain the wild character of the land near their homes so the beaver and other wild life can survive. Herron estuary or inlet is only a part of a greater threatened ecosystem.

From our Scrapbooks

by Margaret Paul

From the Dec. 30, 1968 Tacoma News Tribune:

Bitter cold grips the city. Frozen water pipes, heavy coats and red ears and noses blossomed Monday as Tacoma shivered into the fourth day of its coldest winter in years. The overnight low at TNT's weather station dropped sharply to 7 degrees, the coldest low since 1924 and only 2 degrees off the old time record of 5 degrees set in 1893. The highest in Tacoma on Sunday -19 degrees - was 2 degrees lower than the previous low for

TNT's weather station dropped sharply to 7 degrees, the coldest low since 1924 and only 2 degrees off the old time record of 5 degrees set in 1893. The highest in Tacoma on Sunday -19 degrees - was 2 degrees lower than the previous low for the day, 21 degrees set in 1927. Saturday's low of 16 degrees eclipsed a 74 year-old low mark of 19 degrees for the date set in 1894.

From the Peninsula Gateway, February 1973:

Mr. and Mrs. Robert Davidson were awarded a heart-shaped box of candy on Valentine's Day by Mr. Walter Schmidt, proprietor of the Food Store in Key Center. The Davidsons had been married 55 years (Jan. 12, 1918). Dr. and Mrs. Robert Stewart were runners-up having been married 51 years. Congratulations are due both couples.

LAKEBAY LUMBER

Minter Village

CONCRETE
CULVERT

12" X 31/2
13⁹⁵ ea

5" TREATED
PEELER CORES

8 FEET
\$3⁹⁵ ea

HOME DECORATOR® Interior
Satin Gloss Latex Enamel

- Durable, scrubbable
 - Colors match latex wall paint
 - Soap and water clean-up
- Reg. Price \$17.65

\$10⁹⁹
Per Gal.



WOOD FINISH BY

MINWAX



- available in 15 rich shades
- for any unfinished wood surfaces
- penetrates deep into wood fibers
- America's favorite wood finish

One Half Pint
Minwax Stain

MINWAX

\$2⁵⁹ ea

... makes wood beautiful!

Vaughn 505M
Framing Hammer

24 oz. \$15.99



YWCA Resource Center offers ...

Free child care for Students. Have you considered working in the trades? Need a new direction? The YWCA Resource Center offers a program for women (or men) looking for a more non-traditional employment setting. Get exposure to the blue collar job market, trades training programs, apprenticeships and lots more. Register now for the March 6, 1989 class. Call 272-4181.

OPEN:

7am - 6pm Mon.-Fri.

8am - 5pm Sat.

10am - 3pm Sun.

Let Us Bid Your Blueprints

LIMITED TO STOCK ON HAND



857-7550

Highway 302 between Elgin-Clifton Road and 134 Ave.

A visit to Minter Elementary School

by Stella Retherford

Elementary solid waste management such as garbage disposal, land fills and recycling is now a grade school subject. How does a teacher hold attention and involve 22 active nine-year olds in discussing such adult problems? Your reporter, accompanied by photographer Ken Retherford, went to Minter Elementary School to sit in on such a class and find out.

Mrs. Mary Knackstedt, visiting teacher on solid waste management, stimulated discussion and elicited responses from Mrs. Paula Kepler's third-grade class on how trash is handled in the homes of students. Many reported that they sorted for recycling - glass in one box, cans (washed and squashed) in another, aluminum in yet another, and papers bundled. More than half the students raised their hands when questioned about composting kitchen and garden wastes.

"When saturated with rain, landfills may ooze pollutants which enter bays, streams and water supplies," Mrs. Knackstedt explained. "How do you feel about pollution?" "Bad" and "Sorry" were the answers. To the question, "What should we do with trash other than put it in landfills," one student suggested dumping it in the ocean, another thought

it could be shot into outer space. After showing the inappropriateness of these solutions, Mrs. Knackstedt introduced her theme: reduce, recycle and re-use.

To her questions, "Why recycle paper," "Where does paper come from (that's right, from trees!)," "What other values do our forests have," "Why should we recycle paper in order to not cut down our forests so fast," came responses such as: forests provide jobs, recreation, homes for wild life and fish, prevent erosion, serve as watersheds, hold back water supplies in the mountains and add oxygen to the air. With some help with wording, these were the sophisticated answers Minter students gave.

Students were told that, according to local recycler John Wetzel, classroom paper can be recycled by sorting by type: art paper, writing paper and newspaper

smoothed out and placed in separate boxes. Until plastic recycling becomes practical, the use of paper cups, wrappings and bags is perhaps better. Styrofoam is particularly bad as it produces poisonous fumes when burned. When the smoke rises its compounds threaten the high elevation ozone layer that protects us all from too much ultra-violet radiation. How much of this was understood? Third-graders vary greatly in their experiences and thus their ability to comprehend complicated ideas.

Mrs. Knackstedt used a felt and velcro teaching aid which allowed students to transfer paper, aluminum, glass, kitchen waste, etc. from the trash can side of a graph to the recycling side. Section by section the trash was reduced as 81% of the material was transferred leaving only 19% to go to the landfill.

As a finale, and to hold the attention

of students who were growing restless, Mrs. Knackstedt showed a brief slide show of what boys and girls could do to reduce the amount of trash headed for the landfill, and labels for home recycling boxes were passed out.

At the beginning of this session a counselor came in to tell us that Washington State Fisheries representatives, with the help of Mrs. Freeman's class, were setting up a demonstration salmon hatchery in the courtyard. Egg development is to be observed daily and students will eventually help release the young fish into Minter Creek. Husband Ken went off to photograph that activity while the writer stayed busy with garbage, landfills and recycling.

A final note ... we noticed traditional school subject matter was written on a white board with red chalk - gone were the blackboards of our childhood!

Myr-Mar Accounting Service

Taxes
Bookkeeping
Financial Statements
Auditing
Notary Public
Member - NSTP
30 Years Experience

VISA/MC Welcome

13215 139 Ave. KPN
P.O. Box 557
Gig Harbor, WA 98335

Call
Marv Keizur 884-3566

PETE'S TOWING

AND



EMERGENCY ROAD
SERVICE
OF LAKEBAY

884-3124 Res.
549-6015 Trk. Phone

KEY WESTERN KEY CENTER 884-2311 BUILDING CENTER

BISSELL



9.88 While Supplies Last

Carpet-Sweep is the perfect companion for your vacuum! It's light-weight, compact and picks up messes fast. With swing-over handle for two-directional cleaning, steel design and cushion bumper to protect furniture. Burgundy and gray. 2340

QUANTITIES LIMITED

GREEN THUMB



4.99 While Supplies Last

Professional Anvil Pruner has a unique Power-Link* design that cuts 40% easier than ordinary pruners and draws branches in for more cutting strength! Plus this 8 1/2-in. pruner boasts a Teflon-S* coated blade for a smooth, clean job, and cushioned handles! 205971

QUANTITIES LIMITED

GARDEN LATTICE
SUNWOOD

4 X 8 - \$9.95

2 X 8 - \$5.49

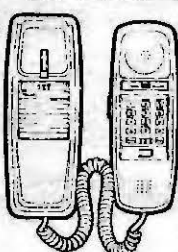
ECON STUDS

2 X 4 X 8' - \$.89 ea

RUG SAMPLE

27" X 54" - \$5.95 ea.

ITT



19.88 While Supplies Last

Trendline Telephone gives you top features like last-number redial, custom-calling key, desk/wall mountability. 82154

QUANTITIES LIMITED

SHEETROCK

4 X 8 - 1/2"

SPECIAL CASH & CARRY

\$3.49 a sheet

PLYWOOD SIDING

4 X 8 - 3/8" RC Shop

Fir or Cedar \$6.95

OPEN - 7 DAYS A WEEK

WE HONOR
BANK CARDS

LIMITED TO
STOCK ON HAND

HOURS:
Mon. - Sat. 8-5
Sun. 10-3

LAKEBAY ROOFING

Pierce, Kitsap, King & Mason Counties

RESIDENTIAL • RE-ROOFING
NEW CONSTRUCTION



SHAKE - HOT MOP - TILE
COMPOSITION - CEDAR SHINGLES

TOM ROLFZEN - Owner
WN ST. CONSTR. REG. LAKE BR* 157KF

FREE ESTIMATES
884-2186

Tax Services
Financial Statements

Auditing
Bookkeeping



6706 Key Peninsula Hwy.S
Longbranch, WA 98351

Phone
(206) 884-3862



Utilities & Site Preparation

P.O. Box 191
11302 Burnham Drive N.W.
Gig Harbor, WA 98335

(206) 851-4696

AC-TI-VC-1-16-1JL



Randy's Bulldozing

4 in One Bucket • Land Clearing • Stump Haul
Excavating • Dump Truck • Roads Punched
• GENERAL DOZING •

RANDY NIMRICK 857-5325

HARRY NIMRICK 884-2590

10512 126th Avenue, KPN
Gig Harbor, WA 98335

L.E.

Jopp

Builders 884-3841

LICENSED & BONDED

CALL COLLECT

- ★ Carpenter Work
- ★ Foundations
- ★ Bulkheads
- ★ Concrete Work etc.

ALCOHOLICS ANONYMOUS

MEETING HELD AT
HOME
KPCS

Mon. & Fri., 8 p.m.
Call Ann 884-2626

Specializing in Custom Homes

R & M ELECTRIC

RESIDENTIAL AND COMMERCIAL WIRING

MIKE NIEMANN 884-3778
ROY DANFORTH 884-2869

P. O. Box 48 • Burley, WA 98322

BULLDOZING
BACK HOE



GRAVEL AND FILL DIRT
LOG BULKHEADS

Johnson Bulldozing Co.
LAKEBAY, WASHINGTON 98349
PHONE 884-2362

DAVE JOHNSON
PHONE 884-3330

PHIL JOHNSON
PHONE 884-2607

JOHNSB • 245DE

We do Alterations

We also
replace
zippers

7110 6th Ave., Tacoma
5508 State Rd16
564-8471
851-3373

Highland Cleaners

Longbranch Community Church

Bible Study 10:15

Worship and

Sunday School 11 am

Longbranch, Wa.

Dr. David Suter, Pastor, 884-4833



Truck-mounted Steam Cleaning
One of the Most Powerful Systems



Living Room • Dining Room • Hall — \$39.95
Free Spot Removal — Leaves No Residue
Licensed Bonded Insured

MIKE SIX, OWNER
206-884-9497

Mike's Plumbing

SOLAR INSTALLATIONS
REPAIRS & REMODELS
CUSTOM HOMES & COMMERCIAL

18120 BASS LANE KPN, LAKEBAY, WA 98349

VAUGHN
COMMUNITY
CHURCH



Please join in with us welcoming our new
PASTOR RON BECHTEL

9:00 am

Sunday School

10:15 am

Morning Worship

6:00 pm

Evening Service

NURSERY PROVIDED

884-2269

884-3540

SAVE THRIFT STORE

Reopened in new location.
Now in the old fire station below
Peninsula High School.

Open Thurs., Fri. and Sat.

10 - 2



large loads to the dump?

garage sale leftovers?

moving?

884-4364



851-9620

7825 46th Ave. NW
(Rosedale and 48th)

CLASSIFIEDS

884-4699

SERVICES

Angel Guild Thriftshop located in KC Corral at Key Center. Donations from KP residents for benefit of KP residents. Lowest prices. Be a benefactor! Open Thurs/Fri/Sat 10 am to 4 pm.

Aerobic Classes Key Peninsula Civic Center. Monday/Wednesday/Friday 9-10 am, babysitting available nominal fee. 884-3642.

Semi-retired Carpenter. Basement to roof repairs. License BILLMC122N3. Call Bill 851-8157.

We're back! Personalized Tax Preparation-Accounting Services. Many years experience. Call Marv Keizur 884-3566 - MYR-MAR Accounting Service and Notary Public. VISA/MC welcome.

Housecleaning Unlimited. Fast and efficient. Commercial and residential. 884-4213.

Allergies and sinus trouble? Chiropractic has helped millions of people with these and similar problems. Call Key Center Chiropractic 884-3040.

AVON PRODUCTS- BUY OR SELL. 851-2491

Bushnell's Landscape Installation. Quality rock walls, professionally installed sod and seed lawns, top soil. 884-2585.

Automotive tune-ups \$25 plus parts. Major/minor repairs. On-site repairs available. 23 years experience. 858-7641

Chimney Sweep. Chimney cleaning and inspection by Peter Hitt. Serving Key Peninsula. 851-3174.

Want a new hobby? Create something new! Classes in Fabric, Tole, Decorative and Western Art. Books, paints, wood, supplies and painted items for sale. Homestead Crafts 857-3307.

Key Peninsula Tax Service - certified Income Tax preparation. Reasonable. 884-9912.

Engine Repair. Automotive, truck, heavy equipment, diesel and marine. 18 yrs experience. Call Chuck, 884-4364.

Automobile injuries can result in misaligned vertebrae causing neck and shoulder pain, headaches, dizziness, nervousness, difficulty sleeping and many other health problems. For relief and correction call Key Center Chiropractic in Key Center 884-3040.

Key Center Chiropractic is successful in dramatically reducing the number of patients requiring surgery due to herniated disc syndrome. Call today, 884-3040.

Key Center Chiropractic accepts most insurances including Blue Cross, Pierce Co. Medical, GEHA, Mailhandlers, CSB, Travelers, Carpenters Trust, Medicare, DSHS and many others. Call today, 884-3040.

PERSONALS

ADOPTION. Doctor and wife with much love and security wish to adopt white newborn. Call collect (818)992-4560.

Driving to Nevada nuclear test site April 5 to demand the United States Government end nuclear war testing. A grass roots non-violent action. Room for three riders, share expenses. 884-9448.

WANTED

SEWING WANTED: Alterations-mending - zippers replaced - new garments. Call Myrtle 884-3566 VISA/MC welcome.

WANTED - APPLICANTS for full-time help. Over 21 years of age. Longbranch Mercantile. 884-3721.

FOR SALE

Watkins Products are available, call Marv and Myrtle Keizur at 884-3566. VISA/MC welcome.

AMWAY products now being offered from Purdy to Longbranch. For a free catalog and dependable servicing, call Amway distributor Elaine Lefler at 851-4452.

Solve your gift problems and never leave home. Over 2,000 items plus discounts up to 40%. Use your Visa and MC. Call Marv Keizur, Myr Mar Products 884-3566.

JOE'S BUTCHER BLOCK PURDY



Custom Meat Shop & Smoke House
Farmer George Recipes
Naturally Smoked Meats
Chicken-Turkey-Bacon

We have Weekly Specials
Stop by Today and Save

Good Prices on
Volume Buys
(meat packs)
1/4's & sides

CUSTOM
CUT & WRAP

In the Bridgeway Market
and
Farmer George's Meats
3870 Bethel Rd. (SE), Pt. Orchard

Your business could be
reaching 6000 homes
in this space - call...

884-4699

Commercial

Portrait

Harrold's
Photographic Services

Harrold Forch

(206) 884-9367

SPARE HAIR?

Perms: \$30.00 & up
Precision Haircuts: \$10.00 & up
Colors: \$ 15.00 & up

Cindi Otis, Stylist, has worked in area for five years.

For an appointment, call

884-9653

Men and Children Welcome
Located just off Elgin Clifton and 302



WASHINGTON
ISSHINRYU
SOCIETY

一心流
空手

Karate

Key Peninsula Isshinryu
Tuesday & Thursday 7PM
Vaughn Civic Center

Aikido

Physical
Conditioning

Confidence

Mental
Awareness

Instructor
Dale E. Heidal
2nd Degree
895-3036



Horse Shoe Lake Towing

BUY JUNK CARS - HULK HAULING
TOWING - USED PARTS

9401 State Road 302
Gig Harbor, WA 98335

JIM or MIKE
857-3866

HORSESHOE LAKE DELI

- Party Trays
- Daily Specials
- Fresh food prepared on location daily.

7 a.m. - 9 p.m. Mon.- Fri.
9 a.m. - 5 p.m. Sat.

857-3884

Longbranch Automotive Center

AUTO REPAIR

JERRY HANSEN

+ DOMESTIC

Longbranch, WA.

+ FOREIGN

South of the Church

884-3272



CASCADE/MEMBERSHIP SERVICES

220 6TH AVENUE - TACOMA, WA 98403
PHONE (206) 627-3133

INSURANCE

JOHN S. HUDGINS
752-2499

DUANE G. FLEMING
884-3340

A Division of DUNCAN-HUDGINS & ASSOCIATES INSURANCE
OLYMPIA • TACOMA • SEATTLE

HOME FEED & GROCERY

Open 8:00-10:00 WEEKDAYS
8:30-8:00 SUNDAYS
884-2321

Featuring:
Beer - Wine - Cold Pop - Feed
Fish Supplies - Friendly Service



Bottle Fed Bus

A dozen of us were riding home from Davidson's logging works near Dewatto in the summer of 1982. I was driving the "crummy," a one-ton truck with a large van body with fore and aft seats for the crew plus a saw rack and a few odd tools such as saws and axes but, as we sadly learned, not even a pair of pliers. There was very little traffic on the Bear Creek Road.

Just after we had crossed Dewatto Creek, at the foot of a long steep hill we lost power and could not get enough gas to the carburetor to crawl up the hill in our lowest gear. It is about nine miles to the Bear Creek gas station where we might borrow a tool to take the gas line apart. So we had to do something right there or start hiking.

The brain cells were primed by thoughts of that long walk; we cut the long windshield wiper hose off and siphoned enough gas from the tank to fill a saw oil bottle. With its cork notched to make a small stream when shaken over a falling saw, it just might work to feed the air horn on top of the carburetor - if someone would lay out on the fender to operate it. We put the right half of the hood up and tied it with a piece of wire. 'Al' Simon was elected as chief engineer, to stretch out there and feed the gas.

With Al all set, I nodded my head, Al shook some gas into the air horn, I hit the starter and we were off. To our surprise, things worked very well. When I felt a lack of power I would just nod, Al would shake the bottle a little more, and the motor would dig in just fine. Except for stopping now and then to refill the oil bottle with gas, we made almost normal speed. It was a breezy ride for Alvin, but it beat walking nine miles.

At Bear Creek we borrowed a pair of pliers, cleaned the gas line and made it back to Davidson's shop at Vaughn without further problems. We had a few tools aboard the next day, for sure. Every man in the crew checked on that!



Local resident Vickie Krause demonstrates Filipino cookery at a recent "Friends of the Key Center Library" evening in the Brones Room of the KC Library. Vickie produced several delicious dishes and told her audience where to get the necessary imported products. The evening ended with everyone having a taste of all the dishes cooked.

KP NEWS Photo by Lee Stiles.

Carpet Upholstery Cleaning

4 Cleaning Systems
Shampoo • Steam • Showcase • Dry

4 Different Prices
Serving Sammamish area:
Free on Location
Serving Clearwater, FL

CARPET DYEING
Also Complete Home-Cleaning
"One Call Cleans Them All"

Residential Commercial Insurance specialists

• Carpets • Upholstery • Floors
• Draperies Dry Cleaned Without Removal
• Walls • Windows

SERVPRO
OF GIG HARBOR

851-6711

- Custom Home Building
- Additions and Remodeling
- Imaginative Design
- Quality Service

LAKEBAY WOODWORKS

BUILDING ON A REPUTATION OF QUALITY WORKMANSHIP
IN WOODWORKING AND CONSTRUCTION SINCE 1979.

John Carlson - Owner 884-3149 LAKEBW* 196JO

Roger M. Jahns

Tax Counselors, Inc.

*In-Home
Appointments*

(206)
857-7283

7919 142nd St. Ct. N.W.
P.O. Box 87
Washou, WA. 98385-0087

KEY PENINSULA LUTHERAN CHURCH

At the corner of LACKEY ROAD
and the KEY PENINSULA HWY

884-3312

Sunday Services:

CHURCH SCH	9:15 am
WORSHIP	10:30 am
FELLOWSHIP	11:30 am

Wednesday Lenten Services

SOUP SUPPER	6:00 pm
WORSHIP	7:00 pm

Come share the Spirit of Jesus!

Rev. Robert Sachs, Pastor

Jerry's

AUTO BODY Shop

13020 Wright Bliss Road
Gig Harbor, WA 98335
884-4458

DJ'S

TIRE & CAR CARE SERVICE

INVENTORY CLOSEOUT!

NEW RIKEN TIRE SPECIAL

- P 175/70R-12 \$35.00 ea.
- P 165/70R-13 \$38.00 ea.
- P 175/70R-13 \$38.02 ea.
- P 185/70R-14 \$36.00 ea.

Price includes mounting and balancing.

- P195/70R-14 \$43.67
- P215/HR60-15 \$64.00
- P215/65HR-15 \$65.00

10% Special Discount on car (new and caps) TRACTION TIRES
Limited to stock on hand

851-4606

13712 S.R. 302
GIG HARBOR, WA. 98335

COMPLETE SERVICE

- MAJOR & MINOR TUNE-UPS
- COMPUTERIZED TUNE-UP
- EXHAUST SYSTEMS
(custom bending & LIFE TIME mufflers)
- COMPLETE BRAKE WORK
- BATTERIES • SHOCKS
- FRONT END ALIGNMENT

KEY PENINSULA CIVIC CENTER EVENTS

March 1989

Sunday	Monday	Tuesday	Wednesday	Thursday	Friday	Saturday
Dr. Penrose Guild's Dessert Theater - March 11			1 Rocky Bay 12:30-1:30 pm Bingo 6:30-10 pm	2 Senior Society 11-4 pm Bear Den 3 3:30-5 pm Karate 7-9 pm CAC 7 pm Teen NA 7:30-9 pm	3 Rocky Bay 12:30-1:30 p Skate 6-7:45, 8-9:30p Grange 7-10 pm	4 Karate 12-4 pm Gold Room
5 Church - Gold Rm. 6-8p Men's Basketball 6:30-8:30 pm	Rocky Bay 12:30-1:30 p AAU 5:30-9 pm Webelos 7-8:30 pm VFW & Auxiliary 7-9 p Teen NA 7:30-9 pm PAA 6:15-8:45 pm	7 KP Seniors 10-11 am Wolf Den 4 3:30-5 pm Karate 7-9 pm KPCCA Executive Board 7:30pm	8 Aerobics 9-10 am Rocky Bay Bingo Park Board 7:30 pm	9 KP Seniors Bear Den 3 Karate Teen NA KPCCA Board 7:30 pm	10 Aerobics 9-10 am Rocky Bay Skate Night	11 10-12 am Kitchen Orthopedic Dessert Theater 7 pm. PAA 9-11:30 am
12 Church - Gold Rm 6-8p Men's Basketball 6:30-8:30 pm	13 Aerobics 9-10 am Rocky Bay 12:30-1:30 p AAU 5:30-9 pm Webelos 7-8:30 pm Teen NA 7:30-9 pm PAA 6:15-8:45 pm	14 Wolf Den 4 Karate KPCCA Exec Board 7:30 pm	15 Aerobics Rocky Bay Bingo	16 Senior Society Bear Den 3 Karate Teen NA Cootiettes	17 Aerobics Rocky Bay Skate Night St. Patrick's Day	18 Twilite Dance Club 9 pm-1 am
19 Church - Gold Rm. 6-8p Men's Basketball 6:30-8:30 pm	20 Aerobics Rocky Bay AAU Webelos Teen NA	21 Wolf Den 4 Karate Road Use Com. 7:30p	22 Aerobics Rocky Bay Bingo	23 KP Seniors Karate Teen NA Bear Den 3	24 Aerobics Rocky Bay Skate Night Good Friday	25 Pinewood Derby 9 am
26 Church - Gold Rm. 6-8p Men's Basketball 6:30-8:30 pm Easter Sunday	27 Aerobics Rocky Bay KPHC 7 pm AAU Webelos Paul Cyr 7 pm Teen NA	28 Wolf Den 4 Karate	29 Aerobics Rocky Bay Bingo	30 KP Seniors Karate Teen NA Bear Den 3	31 Aerobics Rocky Bay Skate Night	

LOOK YOUR
BESTSylvia's
Styling
&
Tanning
Salon

MARCH TANNING

1 Visit	\$3.00	20 Visits	\$50.00
10 Visits	\$27.50	30 Visits	\$67.50

First Time Guests 3 Visits for \$7.50

20% OFF ANY COLOR SERVICEK.C. Corral in Beautiful Downtown Key Center
Call for your appointment today
Thursday evenings by appointment

884-2479

