

BOX HOLDER



Key Peninsula NEWSLETTER

NON-PROFIT ORG
U.S. POSTAGE
PAID
PERMIT NO. 2
VAUGHN, WA 98394

Circulation 4100

NEWS FROM WAUNA TO LONGBRANCH

OCTOBER, 1982 Volume IX, Issue 10



HAPPY ANNIVERSARY LAKEBAY P.O.!

Dottie Pierce, Lakebay Postmistress, displays the 100th Anniversary plaque, made by Bea Wilson (right), of the Vaughn Post Office. For more photos of the 100th Anniversary Celebration, please see page 15. (Photos special to the Newsletter, courtesy of Elton Troth)

COUNTRY MUSIC SHOW AT KPCC ON FRIDAY, OCT. 22

Are you ready for some good old country music? How about a major show, produced and staged close to home where it is easy to get to, easy to park, and sure to be fun? O.K.-- then everyone is invited to an evening of "Easy Country Listening", to be staged in the Key Peninsula Civic Center at 8:00 PM. on Friday, October 22. The show will be presented by Pacific Northwest Musical Productions (Bob and Tina Perry of Lake of the Woods), and is being co-sponsored by the KPCC for the enjoyment of the public and in support of the Civic Center.

FIRE LEVY PASSES OTHER RACES CLOSE

Key peninsula Voters said "Yes" to a \$105,000 assessment in the September 14th primary election, giving Fire District 16 the funds to build a much needed dormitory and maintenance shop for firefighting equipment. Fire District officials voiced their thanks to the voters, with unofficial returns showing the measure passing by a count of 254 in favor and 159 against.

In other races of local interest, it appears that John Shaffer, of Tacoma, has narrowly edged out five other candidates as the Republican to meet Democrat Carolyn Powers



The show will feature of five piece easy listening band, and singers Rhonda Grover and Eddie Royal, funny-

MUSIC FOR 50'S AND 60'S SET FOR RECORD DANCE AT KPCC ON OCT. 9TH

Music Express featuring Paul Tompson K.T.A.G. personality, will provide us with record music from the 50's and 60's on Oct. 9th at the Key Peninsula Civic Center from 9:00 PM. to 1:00 AM. Although costumes are not required, it will be more fun seeing all of you in your favorite clothing from the 50's or 60's. For your convenience the kitchen will be open all evening with hamburgers, potato salad, etc.

Members and guest are urged to get their tickets early, and re-

member anyone living in fire district 16 is a member. For further information call Linnea Lawson at 884-2247, Vicki Henschel at 884-3642 or Claudia Loy at 884-3456. Hope to see you at the dance!!!!!!



Vocalist Rhonda Grover

man W.D. Hall, and a surprise instrumentalist. Rhonda Grover is currently appearing with the group "Stampede Pass" at the Riverside Inn in Tukwila, and Eddie Royal has been appearing with "Velvet Press" in an Engagement at Sinbads in Paulsbo. The entire show is expected to run for about two and one-half hours.

(Continued on Page 18)



POST OFFICE BOX 3, VAUGHN, WA 98394

PHONE: 884-3456

Publisher:

Key Pen. Civic Center

Staff:Keith L. Stiles, Editor
(884-3379)Stella Retherford, News
(884-2487)

Pat Blundell, Production

Ann Larson, Production

Claudia Loy, Ad Production

Features:

Cecil Paul

David Till

Valda Young

Advertising:Eleanor and Henry Stock
(884-3739)**Production Fulfillment:**

Ruth and Warren Watt

Accounting and Billing:Jackie Higbee
(884-4367)**Typing:**

Lee Stiles/Judy Jaggi



YOUR PREZ SEZ:

Busy, busy, busy, thats the word for whats happening at the Civic Center the tasks involved in keeping the Center open seems to be never-ending.

At this writing we as yet do not have a new operating agreement with the Park Board. I am confident we will be able to reach some sort of an agreement with them, however there are considerable differences in opinion as to how the Center and the Park District are to serve the Community.

I wish to thank all of you who responded to our plea for help for the Newsletter, and wish you all the help and support you need in keeping it going.

Once again, we need your help. We are having a special Country Music Show and ticket salespersons are needed. Please call 884-3428.

Tom Van Slyke
President

HELP ALWAYS WANTED

Are you a writer, a typist, or have you done some ad design and/or paste up work? Would you like to give your community newspaper a hand and expose your talents? If so, the Newsletter will always be glad of the help, and you could get a good feeling while staying close to local happening. If you can volunteer some help, please call Claudia Loy at the Newsletter, 884-3456.

HALLOWE"EN should be for the kids-- Particularly for the little ones-- But lets keep them safe. Watch out for them on the roads; if the weather is bad, or they are wearing costumes, they may not see the cars.

SPEAK YOUR MIND.....

(This is a column of ideas, advocacy, needed laws and proposed actions. Send us your thoughts your ideas and your dreams and we'll do our best to put them into print.)

By Dave Till
Box 312 - Lakebay

William Shakespeare said it many years ago. "To be or not to be that is the question; whether tis nobler in the mind to suffer the slings and arrows of outrageous fortune, or to take up arms against a sea of troubles and by opposing, end them."

Let us roll up our sleeves and take action against the dangerous roads between Key Center and Purdy. This road is substandard for several reasons; no shoulders, dangerous intersections, insufficient turn outs for the transit busses and road bed unevenness.

Several persons have been killed at the intersection of Sidney road.

What actions can we take to correct these dangerous conditions and to prevent further terrible tragedies?

First we can state the problem. Secondly we can write to and talk to our state officials and try to persuade them to take action. We can sign Petitions and make phone calls.

Thirdly, we can vote for officials who will take action.

Lastly, we could get out our own shovels, bulldozers and tractors and improve it ourselves if all else fails; like the pioneers did; but there in lies a tale.

"Tomorrow and tomorrow and tomorrow creeps in this petty pace from day to day to the last syllable of recorded time." (Shakespeare)

KEY PENINSULA SERVICE CENTER

Our Key Peninsula Service Center is definitely operational and doing its utmost in fulfilling its mission of offering "Immediate charitable assistance to those in need." Our incidence of unemployment far exceeds the national average because of a higher per capita rate of previously self-employed persons in this area. Self-employed persons are not considered in unemployment in as much as they are ineligible for unemployment insurance. Also we have many senior citizens whose social security and other retirement incomes have been so seriously degraded by inflation that they simply cannot live on what they receive. Others who have been drawing unemployment compensation have used it to its depletion and find that

source of income suddenly at an end. In, short we have many people who sorely need immediate assistance in the line of food, clothing, and shelter.

Community Service Center operates from the old Library Room of Key Peninsula Civic Center. From this office Shirley Sorenson issues food supplies and whatever clothing and household goods are available to those in need. Presently we have on hand government surplus fresh butter, and cheese plus a variety of fresh garden produce (when available). Because several generous area residents have contributed money, Shirley has been able to buy other groceries for distribution.

Continued on page 12

THE OPINIONS EXPRESSED BY INDIVIDUAL COLUMNISTS AND WRITERS OF LETTERS TO THE EDITOR ARE THEIR OWN. THEY DO NOT NECESSARILY REFLECT THE VIEWS OF THE KEY PENINSULA CIVIC CENTER OR THE STAFF.



ADVERTISING RATES

Single Business Card, 2x3...\$ 6.00
Double Business Card, 3x4... 12.00
Triple Business Card, 3x6... 18.00
1/2 Page, 6 1/2x4 1/2 or 3x8..... 22.00
1/2 Page, 9 3/4x6 1/2 or 6 1/2x9 3/4 40.00
3/4 Page, 9 3/4x10 1/2 or 6 1/2x13 1/2..... 55.00
Full Page, 9 3/4x13 1/2..... 75.00

MINUTES OF THE KPCC BOARD MEETING

September 9, 1982

The meeting was called to order at 7:40 PM by president Tom Van Slyke.

There was a change in the agenda to allow Bob Perry, of Pacific Northwest Music Productions to speak. He announced tickets for "An Evening of Country Listening", scheduled for October 22 at the Civic Center, are ready for people to sell. Anyone who would like to sell tickets should contact Tom Van Slyke. Tickets are \$6. each and the Civic Center receives \$1 from each one sold.

The minutes of the August board meeting were approved as read. The treasurer's report was accepted.

A representative from the newly formed Peninsula Community Services informed the board they would be taking over the place of the Community Action Agency the end of September. This organization is primarily a food bank, but also helps needy people pay electricity and fuel bills from donations they receive. This new agency would like to use the space used by the Community Action Agency, but the board could not give permission for this usage since we have not been officially notified that the Community Action Agency has been given an official termination notice. This was tabled until the October meeting.

Gail Mitchell and Judy Wheeler of the Vaughn Preschool asked the board to allow them to rent the Sky Room starting the first week of October. They will use the room five days a week for two hours in the morning. They offered to pay \$100.00 per month in rent. It was moved and seconded, and carried to allow the Preschool to do this.

Several new volunteers have responded to the article in the September Newsletter asking for help on the paper. The first organizational meeting for the new staff will be on September 11. Guidelines were read to the board, and the Executive Committee recommended the board accept them for the new staff. The Newsletter also made a donation to the Center for \$500.

Clara Kurz reported the Gateway in Gig Harbor has purchased a new printing press and the Center could have their old one for taking it away. Mike Salatino will contact them about picking up the old press.

Tom reported on the Management Agreement written up by the members of the Park Board. Copies of the agreement we submitted to the Park Board, as well as the copy they gave us, were available for board members to read. There will be a meeting with the Park Board to discuss our proposal and

their counter-proposal on September 22 at 7:30 PM. in the office. All members and members of organizations are urged to attend.

Pioneer Days was a huge success this year. A total accounting should be ready at the October meeting. We are planning next year's Pioneer Days for August 13 & 14, 1983. We need a chairman for this to start planning and to get this event registered with our State Bureau of Tourism.

Dick and Vicky Hale are new managers for skating. Sally asked to dispense with candy sales at skating or possibly get a vending machine for candy. The executive Committee will check into getting a vending machine for candy. Sally was commended for her outstanding job handling the concessions at skating.

Several new pairs of smaller skates are needed. It was moved, seconded and carried to authorize the managers to spend approximately \$200 on new skates.

Claudia suggested that in lieu of a Halloween Party, perhaps the Center could offer reduced cost of skating to children who came in costume. It was moved, seconded, and carried to give children 13 and under coming to skating on October 29 in costume reduced price of admission.

Continued on Page 5

Alyce's Chowder House

on Beautiful Filucey Bay in Longbranch, WA

MENU

- Clam Chowder
- Oyster Stew
- Sandwiches
- Daily Specials with Soup-of-the-Day
- Cheese Cake
- Homemade Pies

Every Sunday
Chicken and
Dumplings
\$4.95



NEW HOURS:

Every Day
11 a.m. to 8 p.m.

884-4161

Domestic and
Imported
Wines and
Beers

FRIENDS OF THE KEY CENTER LIBRARY

The Friends of the Key Center Library met at 8 PM on September 13 in the library meeting room. Pierce County Library representatives announced that the library will have a pre-school story time starting on September 28 which will continue for five weeks. Call the library for more details. They are also planning a Halloween children's activity for six year olds and up.

The Friends plan a series of speakers and book reviews for their coming meetings which occur on the second Monday of each month. Guests are always welcome and information concerning the coming meeting can be obtained by calling the library.

The spring book and plant sale has been so successful as a past fund raising activity that it was decided to start the planning earlier for 1983's vegetable plants, flowers, and for assembling used books.

The Friends also plan a table at the Vaughn Civic Center Christmas sale at which house plants and home-baked goodies will be sold.

AEROBIC CLASSES RESUME at Civic Center

Aerobics Dance and Exercise classes have started on Mondays 9:00 to 10:00 AM. and 6 to 7 PM. Wednesday 9:00 to 10:00 AM. Thurs. 6 to 7 PM. Friday 9:00 to 10:00 AM and Sat. 9:00 to 10:00 Am.

Both beginners and advanced classes are offered, so you can work at your own pace. For information call Vicki Renschel at 884-3642. (Mon. Thurs. evening and Sat. are co-ed)

CLASSES SET ON HOME CHILDBIRTH BY ACHI GROUP

The Association of Childbirth at Home International (ACHI) is planning on offering a series of intensive childbirth preparation classes during the Fall, beginning in the first week of October. Classes are planned either in a private home or in one of the Gig Harbor fire stations, and will provide prospective parents with technical and practical information on normal labor and delivery, prenatal care, possible complications and other information, with emphasis on childbirth at home, as well as in the hospital.

The classes are normally held in either three 8-hour sessions, or six 4-hour sessions, and a fee of \$60.00 is quoted for those able to pay. Those wishing to take the classes, but not able to pay the fee may be able to reach other arrangements with ACHI. For information relative to fees, course content, and exact meeting times and place, you may call Patty at 858-3271.

VAUGHN FELLOWSHIP WOMENS FELLOWSHIP

There will be a Womens Fellowship board meeting held at Vaughn Community Church on the 22nd. of October at 10:30 AM. Our theme this month is Delighting in the Lord. Ladies in this community are welcome. Babysitting will be provided in our church and we would like to ask that mothers to bring them a sack lunch. This is our second fall meeting and we are very excited to see some new faces. The menu this month is Chinese Food.

Please come and join us as we begin this new season. We welcome newcomers and visitors.

VAUGHN COMMUNITY PRESCHOOL

Vaughn Community Preschool will begin its fifth year in a new location. Located at the Vaughn Community Church for the past four years the preschool moves to the Sky Room in the Key Peninsula Civic Center building.

The combined efforts of the teachers Mrs. Rodney Mitchell and Mrs. David Wheeler, creat a warm loving atmosphere conducive to building a positive self image.

Throughout the year the children learn the basic concepts-- sizes, shapes, colors, counting, and letters. They are introduced to the seasons weather, calendar, good nutrition, good health habits, animals, and insect life, community workers, and participate in class cooking projects. Several field trips are planned for the year including farm and pumpkin patch, zoo, beach, dentist, veterinary, hospital, post office, fire station, bakery, meat and fish markets.



Located at Vaughn, the preschool provides one of the few facilities for preschoolers on the Key Peninsula. The parents are not required to actively participate in the school's daily routine, but are welcome anytime they wish to become involved with the program.

This fall classes will be offered for three year olds two days a week, and four and five year olds three days per week. Registration forms can be obtained by calling either Mrs. Rodney Mitchell at 884-2593 or Mrs. David Wheeler at 884-4894.

Tumlin's Sportswear K-C Corral

CUSTOM DECALS & LETTERING
SPECIAL-Group, School, Team + Business Rates

★ JEANS ★ GYM SHORTS ★ TANK TOPS
★ Jerseys ★ Baseball Shirts ★ T-Shirts
★ Decals ★ Sweats ★ Windbreakers

Hours: 10:00 - 7:00 MON.-SAT.

VIDEO GAMES & Gift Table

884-3613

EXCHANGED-REBUILT Cylinder Heads



Champlain Auto Parts
Tacoma, WA
752-3456

SILVER THREADS

It was good to get back to the Civic Center for the usual potluck at noon on Thursday after a month of picnics. The picnics were very much enjoyed, but there is something about getting to the routine that is good.

Verba Ingersoll, Postmaster at Vaughn, was instrumental in bringing a very interesting speaker from Seattle on September 9. Mr. J.A. Foster, Postal Inspector from Seattle, is a very personable young man who gave a very interesting talk on "Consumer Protection". Mail fraud is a difficult thing to fight. "Seniors are particularly vulnerable to fraud," he said. This point was well developed by the showing of slides of mail order, medical, magazine, and newspaper frauds. He emphasized that one needs to be sure and check before submitting to contributions, too.

Those who are interested in arts and crafts bring your ideas and come help the club get ready for the December sale. Every third Thursday is devoted to this activity, but don't wait for that, come any time. Even though you do not bring something to work on, come anyway and help with material already started.

Foot care has been very popular. This service is offered the second Thursday of the month.

John and Mary Joy Entwistle surprised everyone at the McDowell picnic. They have moved to California, but got lonesome for the Puget Sound country. John is a former president of the society..



DANCE CLUB MEMBERSHIP OPEN

Feel like dancing? Then join us. There have been times in the past when it was necessary to place a limit on membership but Twilight Dance Club is now open to new members. If you haven't danced since high school, no matter when that was, you'll be comfortable with the music for most of the bands hired by the club are versatile enough to play it all-- waltz, boogie, western, or rock. Contact any club member or officer for information, or simply come to our Halloween Dance October 30.

It isn't necessary to wear a costume to the Halloween dance, but it certainly adds to the fun. Each year the costumes seem to become more bizarre, amusing, grotesque, or imaginative, however if you prefer to come disguised as an ordinary person you won't be alone. The dance begins at 9 PM and continues until LAM with the music by the Jet Streams. Hosts are Ken and Abby Ryan, Bob and Kay Therkelson and Bob and Harriet Nichols.

Longbranch News

Events at the Longbranch Church, and at the Fellowship Hall.

Ladies Aid: October 5th at noon

Home Social Club: October 12th, Potluck, 6 PM Program

BAYSHORE GARDEN CLUB

October 15, 10 Am. Workshop bring materials. 1 PM. Discussion on unusual perennials by Edith Pinter. Hostess: Sylvia Larson and Ruby Hatch. Plant Sale.

PROGRAM ON ENGLAND AND ISRAEL

Potluck by Reverend James King on Saturday, October 16th, 6 PM. Sunday, a sermon "A Game of Checkers". Public invited.

NUTRITION: Lunch prepared and enjoyed by seniors at noon on October 19th, Menu: Olie's Breakfast Casserole, Edna's Rhubarb Cake, and lime apple-sauce, 7 up molded salad. Join the fellowship, call 884-3716 if interested

In the Pulpit:

Sundays, October 3rd, Reverend Ralph Smith, October 10th, Chaplain Harry Soolas, 17th, Chaplain J. King, October 24th, Reverend Ralph Smith, October 31st, Chaplain Tom Fukuyama.

RUTH CIRCLE: October 27th at 7:30PM. The Peninsula Neighbors, October 13th, are taking the 10:45 bus from Walt's for the Tacoma Mall, lunch noon, at the Bon's Cascade, shop, return by bus by 4 PM.

DR. PENROSE ORTHOPEDIC

The Dr. Penrose Orthopedic Guild will be holding its October meeting at the home of Mrs. Helen Drake at Rt. 4, Box 4778, Gig Harbor. The meeting will be held at 12:00 on October 14th.

Beauty For All Seasons
COLOR
FOCUS ON YOU
PERSONAL COLOR CONSULTING

Joan W. Cannon
Independent Color Consultant
13915 52nd Ave. N.W.
Gig Harbor, WA 98335
(206) 857-7176

ASK ABOUT FREE GROUP AND CLUB
DEMONSTRATIONS

VAUGHN PARENTS GROUP

We want to welcome all the new people to the area and the new Varmints to Vaughn School !!!!

The parent group has a lot of things planned for the year. We will sell the Vaughn Varmints T-Shirts again.

October 13th will start a week of selling Light Images. They are sculptured crystalline ornaments, bowls, and picture frames.

The parent meeting will be held Monday the 18th at 10:00 at the school. We will have Frank and Nancy Henry demonstrate a line of educational and developmental toys and games for all ages. The games have been chosen from all over the world. A babysitter will be provided during the meeting.

PLEASE save your Campbell labels for us. Labels include Campbell, Franco-American, V_8 Juice, and Swanson products. We can get class room extras with them.

The last Friday of each month will be a dress up day to be announced each month. Of course Oct. 29 will be HALLOWEEN costumes. Watch out for the Ghost and Goblins!!!!

KEY PENINSULA HOMEMAKERS CLUB

Will meet Monday, October 18th from 10:00 am to 12 at the Key Center Library in the Ken Brones Room. The subject to be discussed will be "Quilt Making". Anyone is welcome to attend. Please bring your own coffee cup.



SUPER HAMBURGERS AND ICE CREAM

are among the menu items
at the new

CROW'S NEST II

Located next to
Crow's Nest Antiques
Highway 302 at Rocky Bay

Hours 10-7 Telephone
884-2690



Key Center

NATIONAL AUTO PARTS

MACHINE SHOP SERVICE

MON - FRI. 8:30 a.m. to 7:00 p.m.

SAT. - 8:30 a.m. to 6:00 p.m.

SUN. - 10:00 a.m. to 4:00 p.m.

884-3307

"THANK YOU PENINSULA"

Fire District 16 your Key Peninsula Fire Department appreciates your overwhelming support in the primary election. You have tipped the scales in your favor. Being recognized is one thing but to be actively supported gives us the confidence and ability to go forward in our efforts to expand emergency services on the Peninsula. The successful efforts of our Citizens Advisory Committee is well appreciated. To all who went out campaigning on our behalf; the firefighters, and their families, the Junior Firefighters and the concerned citizens--"Thank You".

Again, I say we have the privilege of being protected by one of the finest fire departments in the county and the credit is yours. "Thank You Key Peninsula".

BOARD MEETING MINUTES (Cont.)

Lenore reported Bingo is doing well. She presented a check for \$2,000 to the Center.

It was moved, seconded, and carried to table having the Flea Market which was scheduled for October 2. Due to a death in her family, the chairperson will not be able to organize this event at this time.

Tickets and Posters are being printed for the 50's Dance, to be held on October 9. Tickets are \$4 each.

Eckankar, a spiritual organization in Tacoma, has written asking to rent a room for meeting. It was moved, seconded, and carried to ask them to send a representative to speak to our board before we agree to rent to them.

The meeting adjourned at 10:15 PM.

Respectfully submitted
Donna Bosch, Secretary

DR. JENNIFER JAMES TO SPEAK AT PHS

The Key Peninsula Middle School Parent Group is sponsoring a lecture on Sexual Child Abuse given by Dr. Jennifer James noted radio and television personality expert on human sexuality. It will be held in the Peninsula High School Auditorium on October 21, 1982 at 7:00 to 9:00 PM. The price of tickets will be \$3.50 and they will be available from Parent Group members of each school or call Avon Gay at 857-6786. Limited tickets will be available at the door.

The Peninsula School District has had numerous cases of sexual abuse reported to school counselors in the past school year. We at Key Peninsula feel it is time for our District to have preventative literature and a preventative awareness program in our schools. The monies raised from this lecture will be made available for this purpose after expenses have been deducted.

Call 884-2479

CINDI - TUES, WED, THURS, FRI, & SAT.

PAULINE - MON, TUES, WED, & FRI.

OLIVIA - THURS & SAT.

10% SENIOR
CITIZEN
DISCOUNT
62 YRS. OR
OLDER

MEN & WOMEN'S

Hair Fashions

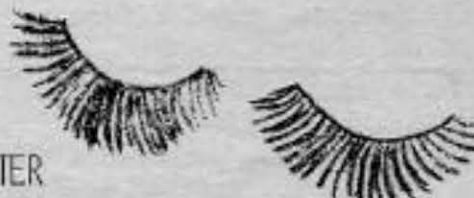
OCTOBER SPECIAL

FREE HAIR CUT WITH ANY
PERMANENT WAVE

REG. \$38.00 NOW \$30.00

Sylvia's 'Staches 'N Lashes Beauty Shop

K. C. CORRAL KEY CENTER

**Raggedy Ann and Andy's Day Care**

HOURS: 6:00 A.M. TO 6:30 P.M.
MONDAY, TUESDAY, THURSDAY AND FRIDAY

HOURS: 6:00 A.M. TO 7:00 P.M.
WEDNESDAY'S FOR YOUR CONVENIENCE

FULL-TIME, HALF-TIME AND DROP-IN'S
ACCEPTING ENROLLMENT FOR MAY 1 - NOW!

LOCATED 1 MILE NORTH OF KEY CENTER

FOR FURTHER INFORMATION: CALL:

VICTORIA HALE
884-4151
After 9:00 a.m.

DISTRICT 16 HOTLINE

In August, Fire District 16 responded to:

Fire Calls =	32
Aid Calls =	56 Ambulance
	Transports 28
Total	88

August 1982 was the highest response month in the history of the Key Peninsula Fire Department. The 88 responses compares significantly with the 39 responses for the whole calendar year of 1969.

**HEN SALE!**

WEEK NIGHTS AFTER 7 P.M.

TWO MONTH OLD CHERRY EGGERS
and SIL-GO-LINK PULLETS

\$2 Each

WILL LAY BROWN EGGS
STARTING IN FEBRUARY!

★ BRING A CONTAINER ★

**CHERYL EVANS FARM**

CORNER OF WRIGHT-BLISS RD. & ELGIN CLIFTON RD.
AT HIGHWAY 302
ADJACENT TO POWER SUBSTATION

THE PACIFIC NORTHWEST MUSICAL PRODUCTION CO.

Proudly Presents

AN EVENING OF COUNTRY LISTENING

FEATURING



CURRENTLY with STAMPEDE PASS



CURRENTLY with VELVET PRESS

ALSO

W.D. HALL
COUNTRY COMEDIAN

SURPRISE
INSTRUMENTALIST

ALSO

*A SPECIAL GROUP OF THE FINEST COUNTRY
MUSICIANS GATHERED ESPECIALLY FOR THIS SHOW*

AT

8 PM FRIDAY, OCTOBER 22

Key PENINSULA Civic Center, Vaughn, WA

ALL TICKETS \$6—Get Tickets Early—Limited Seating
\$1 From Each Ticket sold goes to the K. P. Civic Center

TICKETS CAN BE PURCHASED FROM:

*Toms Barbershop
Key Center*

*Purdy Pharmacy
Purdy*

*Longbranch Mercantile
Longbranch*

*Civic Center
Vaughn*

*Home Feed & Groc.
Home*

or

*Tom Van Slyke, 884-3428
Mike Salatino, 857-4555*

ALCOHOLICS ANONYMOUS

MEETINGS HELD AT KEY PENINSULA HEALTH CENTER.

Key Center Group - Mon. - 8 p.m.

Longbranch Group - Fri. - 8 p.m.


CALL: ANN 884-2626
BURKE 884-3262
JIM 884-3886

LONGBRANCH SELF-STORAGE

ON-SITE MANAGER (Guard Dog On Duty)

- LOCKERS 5 x 5 & 5 x 10
- GARAGE SPACE 10 x 15 & 10 x 24
- COMMERCIAL STORAGE 20 x 20

BOAT STORAGE
NEAR 3 PUBLIC RAMPS



RT. 2 BOX 425
LONGBRANCH, WA 98351

PHONE (206) 884-4466

AL-ANON MEETINGS

FOR FAMILIES & FRIENDS OF ALCOHOLICS:

Sun. & Wed. - 8p.m. St. John's Episcopal Church, Gig Harbor
Tuesdays - 1:30p.m. King of Glory Lutheran Church, Purdy
Fridays - 8p.m. Key Peninsula Health Center, Key Center

CALL: Bea 884-4133
Tina 884-3391 Charlotte 265-6171

BULLDOZING BACK-HOE



GRAVEL AND FILL DIRT LOG BULKHEADS

Johnson Bulldozing Co.

LAKEBAY, WASHINGTON 98349
PHONE 884-2362

DAVE JOHNSON PHONE 884-3330
PHIL JOHNSON PHONE 884-2807

dump truck
backhoe
grader
blade

GRADER SERVICES


884-2271



top soil
road gravel
rockery rock
crushed rock

PHIL RADCLIFFE

route 1, box 95c
lakebay, wa 98349



Randy's Bulldozing

4 in One Bucket • Land Clearing • Stump Haul
Excavating • Dump Truck • Roads Punched
• GENERAL DOZING •

RANDY NIMRICK
HARRY NIMRICK

1-857-2625
1-884-2590

Rt. 4, Box 4783-1
Gig Harbor, WA 98335



PENELCO, INC.

COMMERCIAL - RESIDENTIAL
ELECTRICAL INSTALLATION



P. O. BOX 65
VAUGHN, WASH.

DON MILLS
PH. 884-2511

Bo-Mac Gravel Co.

1920 S.W. PINE RD.
PORT ORCHARD, WA 98366



READY MIXED
CONCRETE

OPEN SATURDAY

R. F. "MAC" McCLOSKEY PARTNER
576-2003
857-4162

L.E. Jopp Builders

884-3841

LICENSED & BONDED CALL COLLECT

- ★ Carpenter Work
- ★ Foundations
- ★ Bulkheads
- ★ Concrete Work etc.

Key Peninsula Lutheran Church

REV ED WAGNER

Civic Center - Vaughn

SUNDAY SCHOOL: 9:30am
WORSHIP SERVICE: 10:30am



B.K.

BUCKLEY-KING FUNERAL DIRECTORS
Since 1888

The good name of Buckley-King

Buckley-King at Haven of Rest
Mortuary and Cemetery
Hwy. 16 - Gig Harbor
858-9991


Longbranch Community Church

Bible Study: 10 a.m.
Worship: 11 a.m.

Longbranch, WA.



Vaughn Community Church



"The Chapel by the Sea"

SUNDAY SERVICE
9:30 and 11:00 a.m.
SUNDAY SCHOOL 9:30 a.m.
EVE. SERVICE 6:00 p.m.

Pastors Dick Bauer and David Botner

884-2269 or 884-3540

Nursery Care Provided
WEDDING WITH LIT



851-4117

PENINSULA REPAIR SERVICE

- PLUMBING & HEATING
- MAJOR APPLIANCES
- REFRIGERATION


R. E. DENTON

Lakebay Community Church

Applying Bible Principles to Everyday Living

SUNDAY SCHOOL 9:45..NURSERY CARE
SUNDAY WORSHIP 11:00..SERVICES FOR 6:30 YOUTH & ADULTS

ONE MILE SOUTH OF HOME 884-3899
PASTOR VERNON WIGGERS 884-2395



BELFAIR FLEA MARKET

(Next door to Belfair Thriftway)
OPEN EVERY WEEKEND
SAT. 9-5 SUN. 10-5

All types of furniture and appliances available in our
6,000 SQ. FT. FLEA MARKET
3 CASH PRIZES DAILY!
WE BUY ALL GOOD HOUSEHOLD ITEMS INCLUDING TOOLS, FURNITURE & APPLIANCES
For information call
898-2818



SOME TRUE LIES?

News item, June 26, 1982, "Ross Lake recedes, now five miles from the dock, various fishermen, resort owners incensed." Probably it is a form of sickness, but that tickles me and brings to mind some true stories about local loggers, most of them no longer with us.

A Peninsula boy was working in an old time logging camp. A "turn" of logs had been unhooked at the landing and the chokers dropped, with the heavy "bullhook" left swinging. The boy was going to rehook the chokers. He bent down, grabbed a choker, raised up and nearly brained himself on the bullhook. Dazed and confused, he went down by popped up and again collided with the hook and went down again. Afraid any attempt to raise the hook might be a further disaster, the donkey-puncher watched in awe as the boy staggered up and hit the hook for the third time. Finally gathering his wits, the engineer screamed, "For God's sake stay down before you kill yourself."

A steam "high lead" outfit was logging a cedar swamp near Allyn. This incident had to happen just when the "Supe" was on an inspection visit. The hooktender had a "tagline" sent out so he could reach a log that was too far out for the regular rigging. The line went out, there was silence for a while, then came the go ahead signal. The donkey snorted, the main-line tightened, then stopped. Then came a stop signal, a backup signal, another stop. Finally the go ahead, another stall, with the whole thing repeated. Curious, "Supe" hiked out for a look. A long skinny log had run under a huge cedar stump. Rehooking had only buried it further in black ooze. Finally in a screaming rage, the mud covered hooktender unhooked the tagline and left the log and choker buried forever under the big stump. The Supe did not mention the strange signals, the lost log nor the missing choker for a long time. He was a cautious man.

Then there was the depression time when Barney S. and W. Spink were falling for C.M.C. at Dewatto. Barney was a top notch faller, Spink a fine saw filer. They were a good team. They were working in a semi open area with many small glacial humps of gravelly Mason County soil. There were road cuts running between the humps. Barney parked his new Durant sedan on the cool side of a tree covered hump and glanced at the patch of trees. They would work on the shady side of the timber because of the heat. As the day advanced they had worked to a point that put the Durant between them and the sun.

Inclined to put on a spurt of speed around three o'clock to bring the "bushels" up a little they were really knocking them down. Walking to a sizeable tree, Barney took a quick glance up to check the lean, they chopped the undercut, squirted on a little saw oil and zipped the back-cut up. "O.K. Spink, knock 'er down," said Barney. Spink tapped the wedge, the tree started to tip and Barney's blood froze. The tree was headed straight for the Durant. "Push Spink, push" yelled Barney, as he vainly tried to divert the falling tree. The Durant was squashed.

No one talked about that for a while, either.



HALLOWEEN SKATING PARTY

OCTOBER 29

This years Halloween Party will be a SKATING PARTY! Anyone who comes dressed as their favorite goblin, ghost, or in other Halloween costume will be admitted free. The skate rental is still 50¢.

The party is October 29, at 6:30 PM til 9:00 PM at the Key Peninsula Civic Center. The party is for ages two years thru Jr. High. There will be a parade of costumes at 7:30 PM with prizes awarded.

Refreshments will be served and everyone is asked to wear costumes in which they can safely skate.

R. DENTON III
P.O. BOX # 148
GIG HARBOR, WA. 98335

GRAPHIC DESIGN III



BUSINESS CARDS
ENVELOPES, LETTERHEADS

857-2118

*BULLDOZING *SUBDIVISIONS
*GRAVEL *ROAD BUILDING
*LAND CLEARING *DUMP TRUCK SERVICE
*UNDERGROUND UTILITIES
#AC-TI-VC-*315PF



ACTIVE CONSTRUCTION

P.O. Box 191 Gig Harbor, WA. 98335
Bus. 851-4695 Eves. 884-2884

Specializing in Hot Water Heat

Todhunter's Plumbing and Heating

Quality Workmanship

Robert R. Todhunter
P.O. Box 386
Longbranch, WA. 98351

884-3076
884-2714

Teddy's

COUNTRY HEALTH FOODS
K.C. Corral - Key Center
(Lakebay - 96349)

(206) - 884-3977

Salt Free Foods
Vitamins - Fresh Foods - Gifts

DORI RICHARDS

OFFERS CLASSES
IN

Oil Painting with
Palette Knife

Tuesday afternoon & evening

206th Ave Court KPN 884-4822

FAMILY DINING

Overlooking Henderson Bay

Homemade Pies and Cinnamon Rolls

Pearl's by the sea

Tacoma-Bremerton Highway 16. Take
Purdy Exit. CALL: 857-2241
Mon.-Thurs. - 7:00 a.m. - 11 p.m.
Fri.-Sat. - 7:00 a.m. - 2 a.m.
Sunday - 9:00 a.m. - 11 p.m.

MINTER CREEK DRILLING

PUMP SALES & SERVICE



EARL FOUTCH
Owner

857-4609
Gig Harbor

9's FAIR HARBOR MARINA

- MOORAGE -

DIESEL - GAS - OIL

VISIT OUR FLOATING STORE -

*MINI GROCERY
*BEER
*WINE
*GIFTS AND T-SHIRTS
*FISHING SUPPLIES

GEODUCKS - LIVE & FROZEN

OPEN: 7 AM - Dark Winter
7 AM - 7 PM Summer
CLOSED THURSDAYS

BUS.: 426-4028

RES.: 275-6417



WALT'S FINE FOODS**AL'S MEATS**

Look for Weekly In-store
Specials

FRESH PRODUCE

QUALITY MEATS

In Downtown
Key Center

884-3325

THE LONGBRANCH
MERCANTILE

FINE FOODS

MEATS-PRODUCE-GROCERIES

GAS-OIL-BEVERAGES

Mon.-Fri.: 6 a.m.-9 p.m.

Sat. & Sun.: 8 a.m.-8 p.m. 884-3721

HOME FEED & GROCERY

9-7 Weekdays 11-6 Sundays

884-2321

Featuring "Choice Beef"
Fresh Produce
Fishers Feed
Friendly Service

PETE'S AUTO REPAIR

FREE PICK-UP
& DELIVERY
ON THE KEY
PENINSULA

"WHERE SATISFACTION IS A MUST"

OPEN - MON. THRU FRI. - 8 TO 5

NOW IN LAKEBAY PHONE 884-3124

**CHARLIE'S
SAW & MOWER**

1 mile North of Key Center on Highway 302

Jacobson - Airens Dealer

Authorized Briggs & Stratton Service Center

Saw, Knife & Scissor Sharpening
Nylon Line Trimmers & Brush

Cutters on hand for immed. use
884-3183 Shop 10109 St. Rd. 302
857-6286 Home Gig Harbor, Wa 98335

**Longbranch
Automotive
Center**

AUTO REPAIR JERRY HANSEN
+ DOMESTIC Longbranch, WA.
+ FOREIGN South of the Church
(206) 884-3272

**Peninsula
Accounting
Associates**

5209 Pl. Fosdick Rd., Suite 203
MAIL: P.O. Box 676
Gig Harbor, WA 98335

JOHN E. MILLER
WALTER E. PAULSEN

Office: 858-8852
or 858-8168

DUANE C. FLEMING

**Cascade
Insurance
Underwriters,
Inc.**

2200 6TH AVENUE • TACOMA, WASHINGTON 98403

AC 206/627-3133

Residence 884-3340

JERRY YORK

York Insurance Agency

Auto • Life • Fire • Homeowners • Boat

Springhill Ctr. - Hwy. 16
Post Office Box 364
Gig Harbor, Washington 98335

Office 858-9560
Res. 857-6567

**TOM'S
BARBER &
TACKLE SHOP**

OPEN 10 - 5:00 P.M.

TUES. THRU SAT.

Key
Center

858-6066 (SHOP)



LARRY NICHOLS

Upholstery

COMPLETE FURNITURE REUPHOLSTERING
BOAT TOPS

NOW LOCATED IN GIG HARBOR

Lucile's Barber Shop

Hours: Tuesday thru Saturday
9 a.m. to 6 p.m.

One short mile south of
Rocky Bay Health Care Center
on Hwy. 302 going to Shelton

884-3732

BURTON MACHINED PRODUCTS INC.

23002 Silver Bow Road, Keycenter
Gig Harbor, Washington 98335

OPEN MON. THRU FRIDAY

7 A.M. TO 3:30 P.M.

JACK BURTON

884-2877

Lonning's Saw

9509 St. Rd. 302
Phone: 857-4648

HOURS:

9-7 Weekdays

9-6 Saturday Owner: LEN LONNING.

PARTNER
JONSERED
McCULLOCH

Bus.: 858-2690 Res.: 884-3555

Harbor Furnace Maintenance
SERVICE - INSTALLATION

P. O. BOX 3
Tom Williams GIG HARBOR, WA, 98335

We do Alterations

We also
replace
zippers

7110 6th Ave., Tacoma

564-6471

**Highland
Cleaners****STATE MUTUAL
SAVINGS BANK**

LOCATED DOWNTOWN
GIG HARBOR PH. 858-9927
Nine offices serving Pierce Co.

GIG HARBOR PHYSICAL THERAPY SERVICE

David O. Merry, R.P.T.

858-5987

THE WOODS
6669 KIMBALL DRIVE
GIG HARBOR, WA 98335

WELCOME TO THE KEY PENINSULA

Johan Mercke, an exchange student from Lund, Sweden, is here under the American Intercultural Student Exchange Program. He is attending Peninsula High School as a senior. He is staying with his host family, Mr. and Mrs. Fred W. Jaggi Jr. and their



children Tina and John, for the year he will be in the United States.

SPECIAL TO ADVERTISERS

Do you want to advertise your goods and services to everyone on the Key Peninsula? Do you want to reach 4100 homes at a very low rate per thousand? If so, your ad should be appearing in the Newsletter. Which is published the first of every month and distributed free by mail throughout the Peninsula area.

To place your ad, you are invited to call Eleanor or Henry Stock at 884-3739 or you may call the Newsletter at 884-3456 to leave a message for them.

HALLOWEEN



SYMPTOMS AND HEALTH

Symptoms of a problem or a disease do not happen the same day. They are just warning signs telling you that trouble is brewing. A competent diagnosis can tell you how much trouble.

I am certainly no advocate of self-diagnosis. But every person must recognize these symptoms or danger signals that must not be overlooked. A physical examination is warranted if any of these symptoms occur:

Low Back Pain -- Numbness -- Shoulder Pain -- dizziness -- headaches -- Stiff neck -- nervousness -- leg or hip pain

If you know of someone, -- or if you yourself are bothered by any of these symptoms, please refer them for a thorough examination.

Sincerely,
Collins Chiropractic Center

"Marian's Just Like New"



CLOTHES ON CONSIGNMENT

THURS. & FRI.

SAT. 10-6

We always have a half price rack.

Located in KEY CENTER

CALL 884-3040

MON. & FRI. 10-6
WEDNESDAY 10-1

FREE MOUNTING

ON TIRES SOLD

FREE FLAT REPAIR



TIRE SERVICE

12118 134th Ave. K.P.N.
(Camp Seymour YMCA Rd.)

851-4606



Open: 8 a.m.-5:30 p.m. Mon.-Fri.
9 a.m.-4:00 p.m. Saturday

CHECK OUR EVERYDAY DISCOUNT PRICES

ON TIRES—BATTERIES—SHOCKS—
TUNE-UPS—BRAKES

Full Time Mechanic

Computer Alignment
and Suspension Repair

WHY CROSS THE BRIDGE?

We consistently offer Better Products, Service & Prices
than our Competitors Across The Narrows!



ON PASSENGER CARS

FREE TIRE REBALANCE

ON TIRES SOLD

abc — $8 \times 6 = 48$

**SUNSHINE CENTER
PRESCHOOL**

3-5 yrs. old

CORDIALLY INVITES YOU TO
TOUR THE FACILITY, DURING

OPEN HOUSE, OCT. 1ST,
9-5 P.M.

PLEASE DROP IN FOR A VISIT,
110717-134TH

(PREVIOUSLY CRAMER RD.)

FOR MORE INFORMATION CALL
857-6513

Local Writers Will See Their Books This Month

The new works of several local writers will be available in published form this month as the product of the "All My Somedays" project, sponsored and funded by the National Endowment for the Humanities.

The writers group, under the guidance of Susan (Shui) Wallace, met weekly for a period of a year at the Key Center Library, and worked on the records of their feeling and experiences that have shaped their lives. Shui, as a facilitator in writing life histories, used her many teaching techniques to help draw out long-forgotten happenings and analyze them in relationship to present day experiences.

Some provocative titles that have emerged are "I am Positive and Negative Spaces", by Virginia Thompson; "Threshers, Schools and Ships", by Hartford Thune; "What Am I Doing Here" by Lenore Jameson; "The White Picket Fence" by Esther Thune; Puget Sound Ponderings" by Cecil Paul, and "Home at Home", by Sylvia Rutherford.

Homa Lovegren, Anita Glass, Ruth Chambers, Evelyn Evans, Delores Ramsdell, Frank Quesnel, and Loretta LaRue each wrote somewhat less than a complete book, so their articles will appear in an anthology.

A copy of each of these works will be available from the Key Center Branch of the library, and it is expected that each of the authors will also be making a private distribution.

Key Peninsula Service News Cont. We also have on hand serviceable clothing for issue. If you are in need call Shirley at 884-4440 to determine what we can do to help.

Where do we get our help in the operation of our Community Service Center? The answer is from YOU!! For example, many people bring their surplus garden vegetables and fruit for donation to the needy. Also, the cash we spend is from direct donation from our local more fortunate citizens. Others donate their time and vehicles for hauling the government surplus and other commodities. Doug Fabre, proprietor of Key Center Meats, has been storing our perishables free of charge. Without his help in this respect we would be at a distinct disadvantage because we have no cold storage facilities for a large volume of goods. Others have volunteered their services in helping Shirley operate the center.

What can you do to help? First, we need donations in the form of money, food, clothing, and household items. Durable canned goods, are especially welcome. We need transportation especially heavy duty pick up trucks for hauling surplus commodities. Volunteer workers are enthusiastically received. You may have a skill which can be utilized in helping an aged person repair his home or in solutions of similar problems.

It must be emphasized that Community Service Center is not a substitute for public assistance. It is intended as an immediate action agency to give temporary help to the deserving needy.

Unless there is a favorable change in the economy the need for community action will not only continue but, it can be expected to increase steadily. We must be prepared to meet this need.

The Longbranch Church has made significant contributions in the sponsorship of our facility and the efforts are sincerely appreciated. Also, the financial boost by the Allyn Lion Club has helped us continue in our mission. We earnestly request that other organizations consider helping us to help our people. Last month we helped nearly 500 people which indicates how much our services are needed.

Someone once said, "There's no free lunch." The able-bodied, unemployed who are receiving help will be participating in "workfare". Those who are able will be expected to sign up to assist with the program. This may involve handling bulk items, breaking large quantities into distribution-size parcels, telephoning, running errands, and generally assisting wherever necessary.

Barter works as well as donations. If you are in need of household items, it may be possible to trade for your needs. List with us what you need, and what you are willing to swap. Services and skills are "trading material" as well.

If you are in need call 884-4440!!

If you know somebody in need call 884-4440!!

If you are eligible for weatherization call 884-4440!!!

If you want to help call 884-4440!

We plan to continue in business as long as we're needed. Please help!

Coffee Break PRESS



Self Publishing **BOOK PUBLISHING** Royalty Publishing
Cooperative Publishing

Graphics **JOB PRINTING** Design
Typesetting

THINK CHRISTMAS!

Beat the ice and snow. Order Now!
Personalized Stationery and Calling Cards
Family History Books
Family Calendars
Memory Booklets

★ Order before Oct. 30 and SAVE 10% ★

Hwy 302 to 94th St; North on 94th 1.8 miles to Spruce Rd.; West (left) on Spruce 250 feet to
Coffee Break Press, 1440 SW Spruce Road

Coffee Break Press (Established Jan., 1977)
P.O. Box 103, Burley, WA 98322
851-4074

Sherman's Arts & Crafts

WE'RE GETTING READY FOR CHRISTMAS

We're stocked up on --

Ribbon
Styrofoam
Glitter
Glue
Felt
Craft Books

Clothes Pins
Doll Patterns
Fabrics
Thread
Yarn
Shiva Paints
& lots more

OCTOBER SPECIAL

60" polyester T-Shirt Knit
\$2.39 yd.

12 Beautiful colors

GIG HARBOR-LONGBRANCH HWY.
OPEN 11:00 AM TO 5:00 PM LAKEBAY, WA.
CLOSED MONDAYS 884-2454

Peninsula GARDENING
by Valda Young

This is the time for planting bulbs of many kinds, perennials, trees and shrubs. All will have time to get established, put out new roots, and be ready for next springs burst of leaf and bloom.

Bulbs can be found in all the nurseries. I avoid the "bargain" lots in novelty shops, they are often dried out, stale or damaged and never bargains in spite of the price.

If it is color that is your main objective, use the older well known varieties. They are dependable and cheaper. If you become a collector, hunt for new and different hybrids. Many of the local nurseries are handling them now. After all this is one of the prime areas for hybridizing and commercial growing of bulbs.

Many of the so called "lesser bulbs" are available here, for others you may need to send for catalogs. All garden magazines list the better ones.

BASIC PLANTING RULES FOR BULBS

Dig holes three times the bulb's largest diameter, round at the bottoms so bulb is in full contact with the soil. Add a tablespoon full of bone meal or superphosphate, stir, and cover firmly. Plant in drifts rather than rows.

Daffodils can almost touch each other, but planting that close means you must lift and divide them almost every year. With more space leave three or four years.

Iris rhizomes go almost on top of the soil. Dig a hole, mound the center, spread roots down the sides, cover till main rhizome is just covered. Other bulbs with special requirements usually come packaged with directions.

I emphasize planting but dahlia and gladiolus are close to digging time. Glads can be dug when leaves die, dig and put in a dry spot for a week or more. Snap the leaf cluster and old bulb from newly formed one. Store in a dry ventilated spot. Old onion bags are perfect.

Dahlias, dig before or just after first frost. Wash, dry, cut if you have time, store in cool, dry spot. If they start to shrivel moisten lightly. Dry peat around them help keep them plump.

VAUGHN GARDEN CLUB

Loretta Jewett will be hostess for the Thursday October 21, meeting of the Vaughn Garden Club. Aline Anderson and Beulah Kupka will be co-hostesses.

The program will cover suggestions and problems regarding bulbs, geraniums and fuschias.

There will be a car pool leaving the Civic Center at 10:15 AM (note this change) on Thursday, October 21, for the 10:30 AM meeting. Bring a sandwich.

**KEY PENINSULA SPORTSMAN'S CLUB
CALENDAR OF EVENTS**

- October 2 - Card Party 7:30 PM
- October 14 - Dinner Meeting 7:30 PM
- October 22 - Potluck dinner & Fun night 7:30 PM

Spring's Miracle

Starts this Fall



Fresh "Sure to Bloom" Holland Bulbs Now in Stock

Tulips, Daffodils, Hyacinths, Crocus and Iris

NEW GIFT LINE:

BASKETS, WIND CHIMES, AND CANDLES

HOURS: TUES. - SAT. - 10 AM - 5 PM

884-3937



HITCHES • TOWBARS
WELDING-FABRICATION
RV SUPPLIES

Gig Harbor Machine Works Inc.
857-4668

Lee Thrall
Jim Ferruccio

15115 - 118th Ave. NW
GIG HARBOR, WA 98335

JACK D. JORGENSON
CERTIFIED PUBLIC ACCOUNTANT

2022 Harborview Drive
P.O. Box 1441
GIG HARBOR, WA 98335

TELEPHONE
(206) 851-3425

SERVING THE COMMUNITY WITH RAPID SERVICE

KEY PENINSULA PLUMBING

LAKEBAY
884-3193

TACOMA
759-7418

Serving Pierce, Mason & Kitsap Counties

REPAIR - REMODEL - NEW HOMES

DE-ROOTER SERVICE KEY-PEN*188J2

H. LEE SHARP, JR.
OWNER

Celebration Cakes

by EDNA

Call 884-2520 evenings

INTERSECTION DANGER ON Rise

DOCTOR ROBERT W. OSBORN DIES

Doctor Robert W. Osborne, 62, a Tacoma physician specializing in urology, died in a reported suicide in his car in a vacant area on September 15.

Doctor Osborne, a summer and weekend resident of Home, was born in Indiana and was a graduate of Indiana University Medical School, and he had made his home in the Puget Sound area since 1953.

He spent summers and weekends with his family for several years at their beach house near Sand Point. His historic home, a landmark on Joes Bay, was built about 1910 as a studio and art school, and was used as such for many years in the early days.



The intersection of State Highway 302 and 94th Avenue was the scene of a tragic accident on Aug. 25th, taking the life of Mildred Parrish, 78, of Fircrest. Because of that, and other accidents at the same point, local residents gathered about 900 signatures on petitions, asking that safety improvements be made at the intersection. Acting upon the most recent death and the citizen input, DOT officials conducted a speed study and found that 85% of all drivers pass the point at an aver-

age speed of 47 miles per hour.

Based on this information, Department of Transportation crews have installed a crosswalk and an advisory 35-miles-per-hour sign at the corner. Danger still remains, however, because of the mobile home park on the north side and the bus stop for passengers boarding for Tacoma on the south side of the highway.

(See related article by Dave Till)

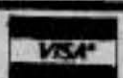
GRANDPARENTS DAY - OCT. 3

<p>OCTOBER SPECIALS</p>	<p>6 pc MASTER MECHANIC Screw Driver Set With storage rack REG \$9.99</p> <p>SALE \$5.99</p>	<p>SNAP-IT STORE-A-CORD 25', #16 ga. 3-wire cord Plastic reel, with 3 outlets REG \$19.99</p> <p>SALE \$10.99</p>
<p>WELLS LAMONT FULL LEATHER Med and Large Gloves REG \$9.98</p> <p>SALE 5.49</p>	<p>MASTER MECHANIC HACKSAWS REG \$6.49</p> <p>SALE \$4.49</p>	<p>6' 1 x 3 S1S2E Cedar Nice fence REG .13</p> <p>10¢ ft.</p>
<p>TAYLOR WINDOW Thermometers Easy to read, rust-proof bracket REG \$3.69</p> <p>SALE 1.89</p>	<p>3 x 6 x 6' Cedar Fence NICE STOCK 49¢</p>	<p>2 x 3 S4S Cedar R.L. REG .24</p> <p>19¢ ft.</p>

KEY WESTERN BUILDING CENTER



KEY CENTER 884-2311



MASTERCARD
AND VISA
HONORED

K C MEATS

GRAND OPENING of our **RETAIL MEAT MARKET**

**OCT. 2
MEATS**

- ★ Fresh Meats
 - ★ Homemade Sausages
 - ★ Mobile Slaughter
 - ★ Freezer Lockers
 - ★ Kustom Cutting & Wrapping
 - ★ Old Fashioned Smoking
 - ★ Locker Beef
 - ★ Wild Game Processing
- All Meats Double Guaranteed*
All Meats Double Guaranteed



FRESH MEAT SPECIALS

GROUND BEEF	
<i>Lean</i>	1.45 lb.
	<small>(10 lb. MAX.)</small>
PEPPERONI	3.59 lb.
TIM'S	
Country Sausage	1.39 lb.
Smoked Ham Hocks	.69 lb.
T-BONES	3.99 lb.

884-4334

Located 8 miles West of Purdy
on Highway 302 in Downtown
Key Center

We reserve the right to limit
all sale items

HUCKLEBERRY INN

DOWNTOWN
KEY CENTER
884-3707

*Live Entertainment
Thur., Fri., & Sat.*

*Lite
Plates*

Fall Special
NEW YORK STEAK

SALAD BAR
CHOICE OF POTATO

\$6.95

*Breakfast, Lunch
and Dinner Specials*

**99¢ Child's
Breakfasts**

MORE ABOUT.....

KPCC COUNTRY WESTERN SHOW

As an added benefit to the entertainment, one dollar of the price of each six dollar ticket will go to the Civic Center in support of its general budget and community activities.

Bob Perry, main producer of the "Easy Country Listening" show is said to be no stranger to stranger to stage productions of this type, having been on the promotional staff for "The Beatles", and having been involved in the management of various Country-Western people involved in the Nashville scene.

As the KPCC gym can only seat 600 people, it is expected that tickets will be going fast for the limited capacity. Tickets will be on sale starting today at Tom's Barbershop, the Purdy Pharmacy, the Longbranch Mercantile, the Home Feed and Grocery, and at the Civic Center in Vaughn. Tickets may also be obtained from KPCC Board President Tom Van Slyke (884-3428), and Mike Salatino (857-4555). You are urged to get your tickets early and come out and enjoy the fun.

PENINSULA SOCIAL CLUB

The Key Peninsula Social Club met in the Longbranch Church on September 14 at 6:30 PM for the first of its fall meetings. After a truly superior potluck supper, Mrs. Carolyn Else and Mr. Dean Hampton presented a program of slides showing the development and present status of our Pierce County Library System. Mrs. Else described the many services available to the community and Mr. Hampton discussed book and film censorship as it affects the library patrons.

A letter from the Pierce County Prosecuting Attorney was read aloud which restrained further activity and sales of lots by the Delano RV park developers until the land is replatted in accordance with present statutes. Further discussion at the meeting concerned potential dangers to the land, shore, sound and the State Park if 153 RV's with attendant population were placed on this small acreage.

HALLOWE'EN can be a fun time-- but it can also be dangerous on the roads and highways. Parents should know where their children are and who they are visiting.

Cook's Corner

HOT CHICKEN SALAD CASSEROLE

2 Cups Croutons
2 Cups Diced chicken
1 1/2 Cups shredded sharp cheddar Cheese
1 1/2 Cups chopped celery
2 Tablespoons chopped onion
1/8 teaspoon pepper
1 Tablespoon lemon juice
3/4 Cup Mayonnaise

To 1/2 of the crutons add chicken, celery, cheese, onion, pepper and salt to taste. Toss well, add the mayonnaise and lemon juice. Mix well. Place in buttered casserole and top with remaining crutons. Dot with butter. Bake at 350 degrees about 25 minutes.

Makes 3 servings

Happy Haunting



Vince Tilotta, Purdy Branch manager, left, reviews a poster advertising one of the feature films to be shown at Harbor Mall Cinema with Jerry Walston, owner of the new three auditorium theater.

"Understanding business needs is a Puget Sound National Bank characteristic,"

States Jerry Walston, Harbor Mall Cinema owner

"I started banking with Puget Sound National Bank 10 years ago," Walston recalls. "They helped me get started in business and they have given me good financial advice ever since." He now owns the Flotation Device Pub and Cafe in Purdy; the Bubblegum Closet in the Woods shopping center and is opening the Harbor Mall Cinema, the first motion picture theater in Peninsula Country in 26 years.

Puget Sound National Bank is more than just a place to deposit money. They offer full-service banking to individuals and businesses alike...trust account services...business systems...individual retirement accounts...personal and business loans plus sound financial advice. And with people who know you on Monday thru Thursday, 10 to 5; Friday, 10 to 5:30 and Saturday, 10 until noon.



Puget Sound National Bank

Member FDIC

Gig Harbor Point Fosdick Square Purdy



is now reserving for
banquets or private parties

Banquet Menu

One entree available per party.

Salmon Steak	Sirloin Steak
Baked Red Snapper	Swiss Steak
1/2 Baked Chicken	Roast Beef
Lasagna	Veal Parmesan

Holiday Menu—ham or turkey available.

Choice of Baked or Mashed Potato
Vegetable * Dessert * Hot Beverage
Salad Corral Included

Spirited Liquid Refreshments also available. Please inquire.

12 1/2 miles south of Purdy
Gig Harbor-Longbranch Highway
884-3743

RESTAURANT HOURS
SUNDAY THRU THURSDAY 11:30-8:30
FRIDAY AND SATURDAY 11:30-9:30

HOURS FOR LOUNGE
SUNDAY THRU THURSDAY 4:00-10:00
FRIDAY AND SATURDAY 4:00-12:00

Obituaries

GEORGE ELLIOTT

With the passing on of George Elliott, the Key Peninsula area has lost one of its favorite native sons. He was always willing to help his neighbors and friends and made significant contributions toward civic projects.

George was recently featured as one of the main participant in our Pioneer Days logging demonstration. Whenever a Key Peninsula resident had a problem with a "danger tree" near his home it was usually George who was called upon to eliminate the problem. All his friends and neighbors will remember his ready smile and his spontaneous willingness to lend a helping hand with no thought of reward.

He was a retired crane operator for the Puget Sound Naval Shipyard, and in addition, had followed logging pursuits, covering virtually every phase of logging from being a faller to boom making. Because of his vocation, George had acquired a most comprehensive knowledge and considerable skill in the operation and maintenance of machinery. George interrupted his civilian work to serve a tour of duty with the United States Army/Air Force. He was an active member of the Key Peninsula Twilight Dance Club, and The Veterans of Foreign Wars Post 4990.

He is survived by his wife, Alice, of Vaughn, son George W. Elliott of Bangor, daughters Linda L. Sullivan and Sheila H. Comfort of Gig Harbor; sisters Marjorie N. Moore of Port Orchard, and Dolly L. Warden of Lynwood; seven grandchildren and several nieces and nephews.

The memorial service held at the Haven of Rest Funeral Home filled the Chapel to overflowing with friends and neighbors. This last tribute to George expressed how important he was to all of us and how the entire community feels its loss. There is a distinct, unfilled void in our neighborhood. by Rhys Woods

LAWRENCE(BUD) CURL

Lawrence (Bud) Curl, 53, a Key Peninsula Firefighter, died Saturday, September 18, in Longbranch.

He was born in Longbranch and had lived there all his life. He was a veteran and served in the Korean War. He was with the Fire Department since 1959, and had served a First Aid Captain for many years.

He is survived by his parents Mr. & Mrs. Henry Curl of Longbranch, a sister Mrs. Pete (Margarite) Hussard of Longbranch and 1 neice.

Funeral services were held on Thursday, September 23 at the Longbranch Church with interment at the Longbranch Cemetery.

Konrad N. Waage

Konrad N. Waage, 45, a former Peninsula School District teacher, died on September 15th in Tacoma.

He was born in Seattle on Oct. 7, 1936 and had lived in Gig Harbor for the past 17 years.

He is survived by his wife Barbara, and Three children, Kristina, Hank, and Jonathan, all at home.

A memorial service was held September 17th at the Haven of Rest.

MACON BACON EXPANDS

Macon Bacon, a local business specializing in meats and prepared foods, has recently expanded its facilities and lines of merchandise.

The store has recently added a pressure fryer for chicken and french fries and a new display-warming oven. There is also a new 12x14 walk-in cooler for beer and ham storage, all built by the owners, including the three hand-made cooler doors.

Macon Bacon, located at the intersection of highway 302 and the Elgin Clifton Road, has built its business on the supply of smoked hams, B.B.Q Ribs, "Sticky Chicken", special hot dogs, and other meat products.

DAIRY PRODUCERS SET ESTATE PLANNING SEMINAR IN OCTOBER

A special Estate Planning Seminar for dairymen and other agricultural producers has been set for Wednesday, October 6 in Fife. According to Woody Bernard, Area Extension Agent, Cooperative Extension will be sponsoring a special program to assist local families in updating or establishing an Estate Plan at the Fife Executive Inn, starting at 10:00 AM October 6.

Your estate is everything you own and you're spending a lifetime building it. Why not take a little time to carefully plan what's going to happen to it, says Bernard. According to him, that's exactly what people will be doing at the October meeting. Extension Economist Richard Carkner, and George Klawitter, Seattle attorney are two of the people on the program to discuss transferring property, life insurance, trust, what happens if you don't have a will and recent changes in the estate tax law. You'll also learn ways of minimizing taxes and probate costs. It's information every family should have and use.

Lunch and program materials are included in the registration fee which must be received by the Conference Office by October 1. For further information and registration blanks call the King or Pierce County Extension offices (344-3900 or 593-4190)

ELECTION NEWS (Continued from P. 1)

for House Position 1 of the 26th District, while Dan Dawson(R) and Bill Smitherman (D) will fight it out for House Position 2. In the Senate race for the 26th District, Art Gallagher (R) will face Barbara Granlund(D).

Peninsula residents are reminded to be registered to vote in the General election in November.

LOOK AT THE CLASSIFIED ADS

WANTED: Old radios from the 20's and certain sets from the 30's and 40's. Any condition OK. Also parts, tubes, speakers, radio books, etc. 857-4687. Before 3:00 p.m.

BUD'S OF LAKEBAY T.V. REPAIR. Antenna installation. Color & black and white. Fast, dependable service. Call 884-2217.

FLOOR COVERINGS INSTALLED: Carpet, linoleum, tile, parquet, ceramics. Orrie Moore, 884-3852.

JM DOZING Experienced, reasonable. Call for our rates. 884-2430

WORK WANTED: Husband and wife gardeners. Weeding, Beauty bark, trimming. 884-4570.

CARPET LAYING: Repairs, restretch, etc. Call Jim Rich, 857-4655.

FOR SALE: Firewood Alder - Ash \$ 65.00 per cord 884-2070

FOR SALE: 4 Month old Semintol Beef Calves. Call 884-2070

For Sale: Upholster Recliner, excellent condition. \$100.00. Call 884-3581 or 884-4440.

FOR SALE: Registered Black Angus Cow. Will deliver. Allen's Pond Angus 884-3572 before 7:30 AM.

For SALE: Hamburger \$1.25 a pound. Black Angus beef cow to old to sell for tender steaks and roast but will make into terrific tasting hamburger and stews. Take advantage of the cheap price today as she won't last long at this price. Allen's Pond Angus 884-3572 before 7:30 AM

WANTED: Fry Cook for small restaurant 3 or 4 days per week. Crows Nest II. Telephone 884-2690.

CALENDAR OF EVENTS

OCTOBER

Key Peninsula Civic Center

1982

SUNDAY	MONDAY	TUESDAY	WEDNESDAY	THURSDAY	FRIDAY	SATURDAY
HALLLOWEEN						1 GRANGE 6-11 GR Skating 6-11PM Gym Aerobics 9:00-10:30 AM
3 Lutheran Church Sunday School 9:30 Worship 10:30 AM	4 Square Dance Gym 7:00 - 9:30 Aerobics 9:00-10:30 AM 6-7 PM Gym	5 Bridge 7:30 PM GR Karate 6:30-8:30PM Gym Volleyball 8:00 PM Gym Scouts 7:15 PM. SR Troop # 213	6 Aerobics 9:00-10:30 AM FUN NITE 7:30 PM Gym Brownies 3:45-5:00 Sky R.	7 Sr. Society 12-4 Cub Scouts 3:45 SR Aerobics 6-7 PM Gym Karate 7-8:30 PM Gym	8 Skating 6- 11 PM Gym Aerobics 9:00-10:30 AM	9 AEROBICS 9-10 AM Lake Minterwood VFW 7:30 PM DANCE AT KPCC "Oldies But Goodies" 9 p.m. - 1 a.m.
10 Lutheran Church Sunday School 9:30 Worship 10:30 AM	11 Square Dance 7:00-9:30PM V.F.W. Post 7:30 VFW VFW Aux. 7:30 GR Aerobics 9:00-10:30 Am. 6-7 PM Gym	12 Bridge 7:30 PM GR Karate 6:30-8:30 PM Gym Volleyball 8:00 PM Gym Scouts 7:15 PM. SR KPCC Ex Board 7:30 PM Office	13 Aerobics 9:00-10:30 AM FUN NITE 7:30 PM Gym Brownies 3:45-5:00 Sky R.	14 Sr. Society 12-4 Cub Scouts 3:45 SR Aerobics 6-7 PM Gym KPCC Board 7:30 GR Karate 7-8:30 PM Gym	15 Grange Aerobics 9:00-10:30 AM	16 Square Dance 8 PM Aerobics 9-10 AM
17 Lutheran Church Sunday School 9:30 Worship 10:30 AM	18 Square Dance 7:00-9:30 PM Aerobics 9:00-10:30 AM 6-7 PM Gym	19 Bridge 7:30 PM. GR Karate 6:30-8:30 PM Gym Volleyball 8 PM Gym Scouts 7:15 PM SR Troop # 213	20 Aerobics 9:00-10:30 AM FUN NITE 7:30 PM Gym Brownies 3:45-5:00 Sky R.	21 Sr. Society 12-4 Cub Scouts 3:45 SR Aerobics 6-7 PM Gym Cootiettes 7-11PM GR Karate 7-8:30 PM Gym	22 Aerobics 9-10 AM COUNTRY MUSIC SHOW AT KPCC 8 p.m.	23 Lutheran Church Dinner Aerobics 9-10 AM.
24 Lutheran Church	25 Square Dance 7:00-9:30 PM	26 Bridge 7:30 PM GR Karate 6:30-8:30 PM Gym Volleyball 8PM Gym Scouts 7:15 PM Sr	27 FUN NITE 7:30 PM Gym Brownies 3:45-5:00 Sky R.	28 Sr. Society 12-4 Cub Scouts 3:45 SR Scouts #213 7PM GR Karate 7-8:30 PM Gym	29 HALLOWEEN-SKATE PARTY 6:30-9:00PM 	30 Twilite Dance Club 9:00 PM.
31 Lutheran Church						