

Levi Van Scoyk, age 3,
checking out a scooter at
the Slow Speed Control
Station.

photo by Hugh McMillan



PEP-C & Bike Rodeo In Key Center

Hugh McMillan and Eileen Young contributed to article

The Bike Rodeo and PEP-C Safety Event, organized by VFW Post 4990 and Auxiliary and others on April 20th, was considered a success despite the small turnout. Chairperson, Debbie Simon, coordinated the event. Key Peninsula Fire Station #2 provided the space and overall supervision of bicycle safety rides through a mini-obstacle course for the kids. The Pierce County Sheriff's Cadets had a booth and fingerprinted children. Citizens Against Crime and members of its Citizens Patrol operated a lighted speed check device on KPN in front of the Fire Station to show drivers what their exact speeds were as they entered the Key Center area — most were in excess of the posted speed limit.

There were also free bike inspections and adjustments, low-cost bicycle helmets properly fitted by VFW Post 4990 Commander and CAC member Bud Natucci, as well as instructions on various skills of bike handling by members of the Fire Department.

A Pierce County Sheriff's K-9 unit directed by Master Patrolman Steve Weigley with his K-9 pals, Bob, an Australian shepherd, and Bill, a German shepherd, added excitement.

An unanticipated high point of the day came with the appearance of 10 King County motorcycle police from Bellevue, Renton and Kent, who according to their officer in charge, Lt. J.C. Hershey, just happened to be on a drivers' training and orientation exercise in the area.

First Annual Open House for KP Non-Profits Promises Fun, Free Food, Fuchsias and Community Spirit

On Saturday, May 11th, the same day as the Annual Lakebay Fuchsia Society Plant Sale, this year the Key Peninsula Civic Center is sponsoring an open house at the KPCC at which all the non-profit organizations serving our area are invited to come do a show and tell for the Key Peninsula community.

KPCC executive committee member and organizer of the event, Tim Kezele, said, "This event is really all about building community. We have a wealth of organizations on the Peninsula who are doing good work to make the Key Peninsula a better place to live, and the Civic Center wanted to create a showcase for those organizations and a forum in which everyone in the community could have a fun time while checking out groups that could help them or that they might want to help."

Free popcorn will be offered to all; hotdogs, sodas and other goodies will be sold; and each exhibiting group will present displays about their work in the community. Local radio station KGHP will broadcast live from the Civic Center.

The event is free and open to all community members. Organizations wanting a free booth should contact the KPCC office at 884-3456. Or call for more information.

The Open House is scheduled from 10:00 A.M. to 2:00 P.M., and participating organizations can begin setting up as early as 7:00 A.M. on the 11th.

Participating organizations as of mid-April are: KP Lions, KP Historical Society, Citizens Against Crime, Two Waters Arts Alliance, Peninsula Emergency Preparedness Committee (Pep-C), KP Community Services, Peninsula Spay & Neuter Project, Key Singers, KP Seniors, Safe Streets, Amnesty International, Vaughn Bay Garden Club, KP Parks District, Children's Home Society, GH-KP Cultural Arts Commission, KP Baptist Church, TOPS, Boy Scouts, Well Infant Child Program/Mary Bridge Children's Hospital (WIC).

JAZZ in JUNE at KPCC

Prohibition Jazz Band Returns - Saturday, June 1

Plan on another wonderful evening of music for dancing and listening as the Prohibition Jazz Band returns to the Key Peninsula for their fourth year. This vivacious, versatile group plays a wide variety of music ranging from the early roots of jazz through the blues, big band swing and into the classic rock of the 50's. The music features great ensemble work and HOT improvisational solos and duets. It is heavily steeped in the styles of early dance combos and the New Orleans tradition. The band has its own distinct sound and plays with amazing energy, inviting you to share their fun.

The Prohibition Jazz Band was formed in March of 1994 and now consists of six very talented musicians who have gained their experience performing with a variety of bands for several years. Leader, Ron Harper, plays the plectrum banjo and guitar. Willy Peterson anchors the front line with a fiery cornet or trumpet and vocals. Terry Strong plays a sweet, strong trombone and sings a song or two. Greg Massett, on the bass, is a big man with a big, solid sound. Mike Ernesti, the latest addition and a KP local, adds rhythmic undercurrent on



the drums as well as vocals and humor. Jeff Winslow plays reeds like no other and adds extra excitement to the music.

The Prohibition Jazz Band will perform from 8PM to 11PM on Saturday, June 1, 2002, at the Key Peninsula Civic Center. Admission is \$10 in advance and \$15.00 at the door. There will be an open bar for the purchase of your favorite drink or beverage. No one under 21 will be admitted!

Tickets are available at the KP Civic Center office (small building, lower floor) in Vaughn, at Sunnycrest Nursery in Key Center and at the Home Country Store. Call 884-3456 for more information.



Pet Prison Partnership Program board members and volunteers, Karen Munz with Blake, Executive Director, Beth Rivard with Sage, Susie McGohee with Wilbur and Corky, Loraine Young with Match, Indra Finch, Betty Devereaux with Bailey.

Photo and story by Hugh McMillan

Prison Pet Partnership Program Shows Its Stuff

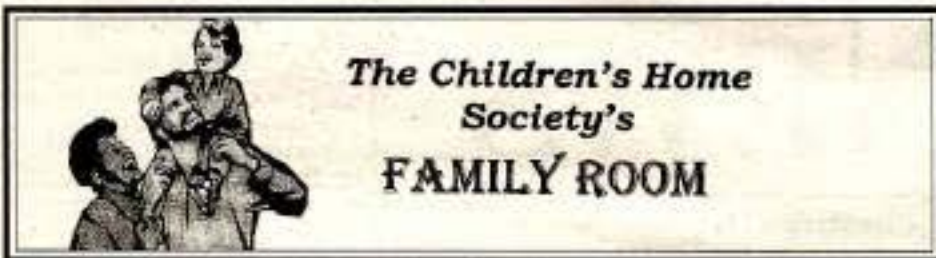
On Thursday, April 18th, seven members of the Board of Directors, volunteers and six dogs of the Prison Pet Partnership Program at the Washington Corrections Center for Women in Purdy participated in the Arfs and Crafts celebration in Tacoma. The team visited PPPP supporters of Arfs and Crafts, the Arf Stop at Le Roy Jewelers, the Brick and Mortar art shop and the BKB and Company. The dogs, Sage, Wilbur, Corky, Match and Bailey, all wore the PPPP vest and patch and were "ooh and ah" eyecatchers wherever they went.

In LeRoy's, Jacki Pearce-Drogy of Tacoma was in a wheel chair with her PPPP-provided service dog, Cheyenne, who opens doors, pushes the wheel chair up ramps, picks things up and is "just a very good friend," says Pearce-Drogy. She has had Cheyenne for three years. Then one of the PPPP members came in with one of the dogs-in-training, Cheyenne, up to this point docile and lying nose down on the carpet, went wild with happiness at seeing one of his old chums, and the two of them had a great nuzzling session.

At the Brick and Mortar art shop, passers-by "had" to pet the dogs and not once did the dogs even almost object to the attention.

At the BKB and Company, we wondered if we'd be able to get out the door; the dogs were attracting such adoration.

It was a good day and the PPPP participants and dogs were able to impress a number of people with the worthwhile win-win nature of the program: it saves dogs which might otherwise be euthanized, it provides incapacitated persons with dogs able to meet many of their needs, and it gives the inmates who work to train the dogs a new lease on life and a marketable skill. Equally important, the program has had only one case of recidivism in its 20-plus years of providing service - and that was when a parolee was apprehended smoking marijuana. Not exactly a violent crime.



**The Children's Home
Society's
FAMILY ROOM**

As summer break approaches at a fast pace and our children have more leisure time, CHSW is a resource for those parents whose children become directly or indirectly exposed to violent acts. Our suggestions may help you to keep your children safe and unharmed:

- * Develop a strong and positive relationship with your children by spending time together having fun. Show affection and warmth and communicate effectively.
- * Set limits, be consistent and fair in punishment and praise for good behavior.
- * Help your child develop empathy, a sense of caring for others.
- * Supervise your child closely and encourage activities that are supervised.
- * Limit media exposure and take a stand for what you believe is right even when your child tells you that all her friends are allowed to watch.
- * Help your child succeed in school and feel successful. Children who do well academically are less likely to become violent.
- * Teach your child that it takes more courage to resist peer pressure than to go along with peers who are encouraging the use of drugs, alcohol, and violence.
- * Teach your child to accept people who are different.

With violence prevention in mind, we are offering a variety of programs for children and parents:

New to the "After 'Ours'" Program at Evergreen Elementary is "Tea Time", a fun hour of coffee, tea and crafts for Moms (or Dads). The aim of this community outreach program is to help parents feel more comfortable in the school setting, encourage networking, and empower parents toward volunteer participation at school. Vicki Biggs is co-hosting along with Lola Christensen, an "After 'Ours'" volunteer.

The next **Teen Coffeehouse** will be held May 18th. Please call for more information about this teen talent showcase program.

The Children's Home Society Family Resource Center is located in the lower level of the KP Civic Center. Office hours are 9am-4pm Monday through Friday. Please call us at 884-5433 if you have questions or need information.

****PLEASE COME VISIT OUR OFFICE AND MEET OUR STAFF ON SATURDAY, MAY 11TH, DURING THE KP CIVIC CENTER OPEN HOUSE. WE WOULD LOVE TO SEE YOU HERE!**

Key Peninsula Business Association

The KPBA met for lunch on April 19th. Jonathan White from Peninsula Light spoke about "Green Power". This is power that is generated from renewable resources such as wind, water and sun. PLC has committed to purchasing "Green Power" from the Bonneville Power Administration originating from the Wyoming Foote Creek Wind Project and the Packwood Hydroelectric Project in Washington State. Electricity generated by those projects will be added to PLC's main power grid. "Green Power" may be purchased in blocks of 100 kwh for \$2.80 [each] per month. Users can commit to as many blocks as they wish and it would be added to the bill each month.

PenLight is hosting a WIND AND WINE TOUR, June 14th and 15th, an informational tour of the Stateline Energy System of spectacular wind turbines near Walla Walla, with time to enjoy wine tasting at nearby wineries. Visit their website at www.penlight.org or call 857-1514 for information or reservations.

Barbara Ann Smolko from Pierce County Water Programs talked about the KGI (Key Peninsula/Gig Harbor/ Island) Watershed Council. Many organizations are working with this group and many projects are being initiated to encourage communities to be more aware of what has to be done to protect their water sources in the ground as well as surface water such as bays, streams and lakes and the wildlife that inhabits them. For more information and volunteer opportunities call Barbara Ann Smolko at 798-6156 or e-mail bsmolko@co.pierce.wa.us. The Watershed Council meets on the 3rd Tuesday of each month at Peninsula Light headquarters from 4:00 P.M. to 6:00 P.M.

To Our Contributors

Many thanks for the continuing donations. Money matters!! The staff of *The Key Peninsula News* is gratified by the support that has been shown. We have received approximately \$1,150 from 31 individuals and groups since February. This helps keep us in the black as it enables us to pay our printing bill on time.

We had a healthy ad issue last month and we want to encourage our readers to patronize, and thank, the advertisers they see in the paper. Since the income from ads is our main source of income, you might also encourage any local businesses who do not advertise with us to consider doing so.

In addition to those already mentioned, we especially want to thank our new donors:

- | | |
|--------------------|-----------------------|
| Carolyn Penner | Phyllis Radcliffe |
| Virginia Seavy | Johanna James (again) |
| Dolores Argabright | Sherry Pierson |
| Anna May Quesnel | June Mercer |
| Marjorie Hagen | |

There's No One At The Fire Station

Occasionally we still hear people say that they have gone to the Fire Station for emergency help and there is no-one there. Station #3, at Home, and Station #5, at 302 and Wright-Bliss, do have staff stationed there for 24 hours a day and the other Stations, #1, north at Wauna, and #4, at Longbranch, have Volunteers and Residents. The staffs are more likely to be here at night or on week-ends. The Headquarters Station, #2, at Key Center, is where the Administrative staff works weekdays from 8:30 A.M. to 4:30 P.M. There are Residents and Volunteers there, also, but their hours vary.

The decision was made some time ago to have the stations "manned" when there were enough paid employees to do this so that personnel in stations with equipment would be closer to the different areas and, thus, provide quicker response time and better coverage of the whole Fire District. The reason there is no-one at a station is due to the fact that they are responding to a call.

In addition to responding to emergencies, there are other jobs and activities that have to be handled on a day to day basis. These include public education, going to sites to O.K. fire permits and doing minor maintenance on equipment and engines.


When a Call comes in, the personnel at the nearest station responds and one or more stations may be un-manned for a while. Personnel and equipment may also be moved around the District in order to keep other areas covered. At budgeting time each year an assessment is made and more staff is allocated where it is needed to provide quicker service.

There may be times when you see equipment and staff from District #5 - Gig Harbor in our area. It is not unusual for the two Districts to move back and forth to help each other cover during times of greater demand or a shortage of staff or equipment.

If you need a blood-pressure check, that is available at Station #2 in Key Center, between 8:30 A.M. and 4:30 P.M., five days a week, unless there is a holiday.


If you have an emergency call 911. You will receive much faster service if you stay where you are and help can come to you. This doesn't mean that you will have to be transported for care. You can be evaluated, treated and given instructions right where you are. **Remember, Fire Fighters Make House Calls !!!**

Submitted by Ruth Bramhall



HARRISON HOMES, LLC

"People Are Our Business"




"Building homes is more than just a business transaction; it's a long-term relationship between people who trust each other"


"Attractive, well built homes are not just a matter of sticks and bricks; it's the right people, carefully putting those pieces together that make all the difference."

Harrison Homes has the right people: dependable, skilled employees, sub-contractors, architects and designers, and the most important people of all - Happy Customers!


Looking for a builder? Call us - we would like to go to work for you.




Dale Harrison



Steve Owen



Kim Kramer



Harley Wanaka

CUSTOM HOMES • REMODELING

253-884-7670

HARRIHL02101



Veterans' Voices

By Eileen Young

As I write this article, my flowers are doing the back stroke and my chickens are wearing waders! Hopefully, by the time you read this, the sun will have made its appearance.

May 4th - **TO ALL MEMBERS** - Loyalty Day and certificate presentation at the Community Food Bank. Luncheon will be served at 1:00 P.M. and you must contact 884-4407 if you are planning to attend as food must be prepared.

BUDDY POPPY DAYS - May 10th and 11th. You will receive a phone call asking for your help in this worthwhile effort for the Relief Fund which helps the less fortunate in our community.

The "Spring into Summer" event at the Harvest Time Deli on 302 will see the ladies busy at their "yard sale". It is time for spring cleaning, so donate your unwanted goodies to this sale and then later stop by to pick up some good buys! For pick up call 884-9156.

A request to ALL readers — Please save your Campbell's soup labels for the Auxiliary. These go to help buy equipment for our National Home. Call Dee Bea Blum for information, 884-9982.

CARE CIRCLE this month includes Marj Adams, the Wood family, the Sorsdhal family, Ralph Kingsbury and Buzz Simon. It is nice to report that Debbie Simon is now walking on BOTH feet and that Harm Van Slyke is doing just fine after his surgery. Our sincere condolences to the Tomasi family, and to all of you not 100%, please get well; we CARE.

Until next month, keep well, keep dry and remember — There is no danger of developing eyestrain from looking on the bright side of things.

Flag Retirement Ceremony at Kopachuck

On May 18th at 4:00 P.M. Cub Scout Troop 217 will conduct a flag retirement ceremony at Kopachuck State Park. This ceremony will burn 13 old and tattered flags - representing the original colonies - with respect and dignity. The public is invited and refreshments will be served.

In a private ceremony on May 27th, the Cubs will venture into the Tacoma Narrows to spread the ashes in a final tribute.

For your information, there is a flag (disposal) box located at the KP Civic Center, sponsored by the VFW, for your "retired" flags. Members will see to the disposal with proper flag etiquette.

Aisle Of Honor At Vaughn Cemetery

Memorial Day, Sunday, May 26th, will again feature the AISLE OF HONOR at the Vaughn Cemetery. The 191 flags will be posted from 7:00 A.M. to dusk. At 1:00 P.M. a Memorial Service will be conducted by VFW Post 4990 and will include the piping in of the colors by the Afifi Pipe and Drum Band from Olympia and a rendition of the National Anthem by soloist Sunny Jo Garth.

This annual event is a "must see" and with the help of volunteers, Scouts and members of the community will be another wonderful day to honor our fallen comrades.

ANGEL NOTES

by Gerry Reeder

It is time to think Spring!

The Angel Guild met at the Civic Center for the annual meeting on April 22nd. The new officers who were installed were Betty Barkubien, President, Frankie Johnson, 1st Vice President, Mary Krumbein, 2nd Vice President, Nancy Korseck, Secretary, and Elsie Vezzani, Treasurer.

We honored charter members, past members and new members. The fun continued with a potluck luncheon and a style show with members showing items purchased in our store. Talk about Mrs. America! The MC was Victoria Hawkins, and we had special music also.

Our volunteer members are hardworking, helpful and friendly. We always have clean, fresh merchandise with "in store" specials. Our proceeds support many projects on the Peninsula.

Try us and you will be delighted with your purchases.

LIVING AND LEARNING ON THE KEY PENINSULA
by Dale Skrivanich

Spring is in full swing and so are the KP Historical Society and its museum project. On March 28th, we held our 30th annual meeting at the Longbranch Improvement Club. Officers for the coming year were elected and the annual budget was approved. Surprise, surprise — there are no changes in officers for the coming year. Tim Kezele, President, Shirley Olson, Vice President, Barb Hanna, Treasurer and Dale Skrivanich, Secretary. The architectural firm of Olson, Sundberg, Kundig and Allen presented the prospective drawings for the John & Addie McMenamin research room addition to the Museum. The drawings will be on display at the Key Center Library in May.

The next scheduled gathering for the Society is on June 22 at the KP Civic Center from 12 Noon to 4:00 P.M. A program on "Oyster Farming on the Key Peninsula" is planned. Watch for more information in local papers.

Remember, the museum is open on Thursdays and Saturdays from 1:00 P.M. to 4:00 P.M. or by appointment. Call 884-4538. Also, our book "Early Days of the Key Peninsula" is on sale at the Museum or at Sunnycrest Nursery.

Mother's Day is May 12th!



BAYSIDE ANIMAL LODGE, LTD.



Where animal care and friendly customer service are our specialties

Ask about our wide variety of wild bird products!

Boarding-Large, individualized kennels for dogs, double-decker condos for cats, special care for other small animals. The safe and clean home away from home for your pets. Day boarding or long-term stays available.

Pet Supplies-Full line of pet supplies, ranging from cat and dog foods to bird feeders and horse vaccines (and most everything in between!).

Feeds-Specializing in feeds for rabbits, goats, horses, cattle, domesticated birds, llamas and more.

Grooming-All breeds of dog and cat grooming by a Certified Professional Groomer with over 25 years experience. Ask how our Maintenance Program can save you money.

Call or Stop by Today!

12615 134th Avenue KPN (Between Key Peninsula Highway and Highway 302)
(253) 851-9170

New!

8.95% APR* VISA Platinum

- Earn one mileage point for every dollar spent
- Choose from a variety of airlines to redeem points
- Credit limit up to \$25,000*
- 2,500 bonus points upon approval

OR - ASK ABOUT OUR OTHER VISA PRODUCTS!

VISA CLASSIC

VISA GOLD

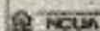
VISA SIGNATURE

*Subject to credit approval. \$25 annual fee applies to every approved VISA Platinum Card. Your rate and credit limit will be determined by individual credit application, including income, debt ratio, employment and credit history. Must be a VISA Credit Union member to apply. Membership at Sound Credit Union requires a \$25 savings account. Mileage point earned and redemptive value, restrictions and conditions of mileage program.

(253) 383-2016 www.soundcu.com

SOUND CREDIT UNION

YOUR FINANCIAL PARTNER





A View From Home

by Marty Marcus

One might reasonably expect that people who are providing health care for others would not only be aware of the need for adequate health insurance coverage, but would also be properly insured themselves. Your first expectation is surely correct, but the second one, unfortunately, is not.

The *American Journal of Public Health* recently published a study carried out by three professionals at Harvard Medical School. It showed that one of the rapidly increasing groups of **employed** workers in the U.S. who **don't have** health insurance coverage is health care workers.

Using Census Bureau data from 1988 compared with 1998, the authors of the study found that 1,360,000 health care personnel lacked health insurance coverage in 1998. This includes persons who are employed in the offices of physicians or other health care practitioners, in hospitals, in nursing and personal care facilities, or in other health services. Compared with data from 1988, this represents an increase of **84%** in the total number of these workers who lacked health insurance.

This study also found, among other things, a wide disparity in insurance coverage related to the income of the health care worker. Workers earning less than \$25,000 per year, who comprise more than half of all health care personnel, are more than 3 times as likely to lack coverage as those with higher incomes.

What strikes me as being even more tragic is the effect on the children of these health care workers. In 1988 there were about 700,00 **uninsured** children living with health care workers. A decade later there were **more than a million**.

Does this lack of health insurance coverage cause qualified workers to leave health care jobs, and then does that affect the quality of health care for those of us fortunate enough to have health insurance?

Low Cost Phone Service For Low-income Households

The Educational Opportunity and Resource Center in Tacoma has announced the Washington Telephone Assistance Program (WTAP). It provides basic phone service for \$4 per month and waives installation charges and deposits for qualifying low-income households. The requirement for eligibility is being a recipient of DSHS benefits. A household can enroll in this program even if they have existing phone service. Call the local phone service provider and ask to enroll in the Washington Telephone Assistance Program. If there is a problem with enrolling, call Sherrilyn Reed at 253-572-5960 and she will provide assistance with enrollment in WTAP.

KEY PENINSULA NEWS

To Subscribe, Please Write,
Call or FAX: *Key Peninsula News*
17010 S. Vaughn Rd.
P.O. Box 3, Vaughn, WA 98394
(253) 884-4699
FAX: (253) 884-4053

Key Peninsula News is published monthly by the Key Peninsula Civic Center Association at the Key Peninsula Civic Center in Vaughn, Washington. Copyright 2002 with all rights reserved. Reproduction of editorial or graphic content in any manner without permission is prohibited. Annual subscriptions (12 issues) are available for \$10.00 and are mailed First Class. Copies are mailed presort standard to residents and POBox holders of the Key Peninsula. Single copies are available at the newspaper office in the basement of the Civic Center annex and at various distribution points located on the Key Peninsula. Approximately 18,000 people live in the distribution area. Submission of articles is encouraged and the deadline for all material is the 20th of the month.

MISSION STATEMENT OF OWNERSHIP, PURPOSE AND OPERATION OF THE KEY PENINSULA NEWS

1. THE KEY PENINSULA NEWS is a community newspaper, owned and published by the KEY PENINSULA CIVIC CENTER ASSOCIATION, a non-profit, 501-C3, corporation with main offices in Vaughn, Washington. The name, goodwill and any copyright assets that may exist pertaining to the NEWS are among the financial assets of the KEY PENINSULA CIVIC CENTER ASSOCIATION.
2. The primary purpose of the NEWS is to serve as communication between the KPCCA Board (and its activities) and the residents of the Key Peninsula, generally corresponding with the defined geographical area of Pierce County Fire District 16.
3. The secondary purpose of the NEWS is to serve as a communication means between the KPCCA member organizations and the residents of the same area.
4. The NEWS shall be entirely free of political bias, and shall advocate no particular religious point of view. Further, its service will be open to all local organizations and residents, subject to the availability of space and generally accepted good taste and legal considerations.

OUR GRATEFUL THANKS TO ALL WHO CONTRIBUTE TO THE KEY PENINSULA NEWS!

Editors: Marty Marcus, Ann Waldo
Ad Sales: Bob Stackhouse
Production: Alice Tramil
Staff Reporter & Photographer:
Hugh McMillan
Staff Cartoonist: Liz Kassler
Proof-readers: Marty Marcus, Ann Waldo
Accounting: Vicky McChatt

The opinions expressed herein are the opinions of the writers and do not necessarily reflect the views of the publishers or staff. All Letters to the Editor must be signed and include a daytime phone number for verification. No anonymous letters will be published. Submissions are used on a space available basis and may be edited if used. THE KEY PENINSULA NEWS reserves the right to edit letters for length and content and no religious or political material will be printed. Mail letters to: P.O. Box 3, Vaughn, WA 98394.

KEY DATES — 2002

Those marked with an * are held at the K P Civic Center
BUSINESS & PROFESSIONAL GROUPS

KP Business Assoc. 1st Friday @ 7:30 am Home Port Rest.
3rd Friday @ noon Horseshoe Lk Rest.
KP Firefighters Assoc. 4th Weds @ 7 pm Key Ctr Fire Sta.

CIVIC ORGANIZATIONS

Ashes 1st Thurs @ 10:30am Key Ctr Fire Sta.
Boy Scouts #220 Tues 6 to 8pm KPCC*
Brownies Mondays 3:30-4:30 KPCC*
Coolettes 3rd Thurs @ 7pm KPCC*
KPCCA Exec Comm 1st Mon @ 7pm KPCC*
KPCCA Board 2nd Thurs @ 7pm KPCC*
KPCS Board 2nd Mon @ 10am Comm House-Home
KPHC Board 4th Thurs @ 7:30pm Health Ctr
KP Lions Club 1st&3rd Weds @6:30pm KPCC*
VFW & Auxiliary 2nd&4th Mon @ 7pm KPCC*

COMMUNITY SERVICES

Angel Guild 4th Mon @ 10am Key Ctr Library
AWANA Weds-6:30-8:30 KPCC*
Children's Home Society
Family Resource Ctr Mon thru Fri 9-4 KPCC*
Clothing Bank Mon thru Fri 9-3 KPCC*
Healthy Families/
Parent Connection 2nd Thurs 10-11:30 KPCC*
Indoor Park Tues & Thurs 9:30-11:30 KPCC*
J.U.M.P. (Juveniles United through Music and Poetry) KPCC*
Lending Library Mon thru Fri 9-3 KPCC*
Little Buddies Tues 3:30-5 KPCC*
Weds 3-5:30 Evergreen Sch.
Parent Support Group 3rd Fri 7-8pm KPCC*
Relatives Raising Children 2nd Mon 1-2:30 KPCC*
Tea Time Thurs 4-5 Evergreen Sch.
Women's Support Group Mon 4-5 KPCC*

Citizens Against Crime/
Citizens Patrol 3rd Thurs @ 7pm Key Ctr Fire Sta.
Food Bank Tue-Wed-Thur-Fri 10-3 Community House, Home
Hot Lunch for Seniors Weds & Fri @noon Comm. House, Home
Food & Clothing Assistance Call 884-4440 for more info
Immunizations (FREE) Thur 10-4 G H Urgent Care
IMPact Key Peninsula 1st Tues @ 9am Lakebay Comm. Church
Help for Victims of Domestic Violence - Call 884-5086

Key Ctr Library 884-2242 Tues & Weds 11-8, Thurs & Fri 11-6,
Saturday, 11-5 Key Ctr Lib.
K P Baptist Bible Study Weds 7-8:30pm KPCC*
KP Baptist Church Sun 8:30-1:00 KPCC*
K P Well Child Clinic Tues @ 9am Key Medical Ctr.
PEP-C GH/KP Emerg. Comm. 3rd Sat 10-2 Kimball Dr. Fire Sta., GH
There Is Hope/
12-Step Christian Support Group Thurs @ 7pm Lakebay Chris. Assembly
WIC (Women, Infants & Children) Tues 8-4 VFW Rm, KPCC*
Call 884-3835 on Tuesdays for an appointment

PUBLIC MEETINGS

KP Fire Commissioners 2nd Weds @ 7pm Key Ctr Fire Sta.
Second Mon after the 2nd Weds @ 4pm Key Ctr Fire Sta.
KP Parks & Recr Commission 2nd Mon @ 7pm Vol Park Annex

SELF-HELP GROUPS

Alcoholics Anonymous Weds @ 7pm, Fri @ 8pm Comm. House, Home
Alcoholics Anonymous Thurs @ 6pm Longbranch Comm. Church
Overeaters Anonymous Weds @ 7:30pm St. Nicholas Church, GH
Peninsula ALANON Tues @ 1:30 Lutheran Church, Purdy
Contact Norma @ 884-2205 for more info

T.O.P.S. Tues weigh-in @ 6:15pm, Meeting @ 7pm KPCC*
T.O.P.S. Tues @ 9am Fire Station #3, Home

SOCIAL & HOBBY GROUPS

Bayshore Garden Club 3rd Fri noon Longbranch Improv Club
for more info call Sylvia Retherford @ 884-2487
Karate Mon. & Thurs 7-9 PM KPCC*
Key Ctr Duplicate Bridge Club Tues eves(884-2663) Key Ctr Library
Key Singers Tues 7-9pm (Jo Sturm @ 884-1350) Longbr. Comm. Church
KP Historical Society 1st Thurs @ 7:30pm Museum @ KPCC*
Museum Open Thursday & Saturday 1-4 (and by appt - 884-4538)
Lakebay Fuchsia Society 1st Thurs @ 7pm Key Ctr Library
Longbranch Improv. Club 3rd Weds @ 7pm Longbranch Improv. Club
Peninsula Neighbors 2nd Tues @ 10am Fire Sta. #4, Longbranch
Ruth Circle Meeting 3rd Mon @ 10am Bible study, lunch & meeting
at noon Longbranch Church
Senior Society Luncheon Thursdays @ noon KPCC*
Skate Night Fridays 6:30-9pm KPCC*
Vaughn Bay Garden Club Call 884-5403 for more info
NOTICE: We have revamped the Key Dates Listing. If you have additions or corrections to suggest, please mail them to Key Dates, P.O. Box 3, Vaughn WA 98394, or Fax to us at (253) 884-4053.

From the Caretaker

submitted by Lori Warkocki

The Key Peninsula Civic Center has a lot going on this spring. Good news for all you local tennis buffs. Both of our grubby, mossy tennis courts have been thoroughly cleaned and they are spotless and gleaming, ready for your little green balls. Thanks goes to Ernest French from Little League for spending three whole Sundays (even in the rain) from morning until evening pressure washing years of crud and debris off our courts. Tennis, anyone?

There are strange sounds coming from the gym every Saturday morning here at KPCC. It's the clicking of Wendy Webster, dog trainer, and her class of clicking dog owners. The clickers are a device used by Wendy to teach dog obedience. I have sat in on these classes and am amazed at this effective method. Wendy will be starting a beginners' class on May 18th and can be reached at 857-7805.

There is still a month and a half left of Indoor Park, sponsored by Children's Home Society. Toddlers and parents from all over the Peninsula come every Tuesday morning for a couple of fun filled hours, riding kiddie toys and throwing balls in our gym. It's a great place to get acquainted with other moms (and a few dads), and it's a great time for the kids to run and play during spring showers.

Attention all skaters! There is a month left of skate nights for the season. We appreciate all the hard work Shawn and Leslie Etheridge and their merry band of volunteers have put in to make Friday skate nights a success. Parents, please remember to pick up children promptly at 9:00 P.M.

One of the strong points the Key Peninsula Civic Center has is its versatility. We hold a wide variety of big and small events. Everything from Scout meetings to banquets and art shows. Last month we held the Key Peninsula Little League Pancake Breakfast fund raiser, which was a big success. May 4th, Harbor Heights School will be holding their fund raising auction. The following Saturday, May 11th, will be an open house for local non-profit organizations to come and inform the public about their services to the community. Come on down and find out what is avail-



Ernest French pressure washing the tennis Courts at KPCC.

photo by Marty Marcus

able to you on the Key Peninsula.

Call our office manager, Jena, to inquire about using our facilities or volunteering, or for any other questions you may have - 884-3456. And thanks to you, our community, for all of your support in so many different ways.

Road Side Eyesore Cleaned With Local Efforts

Some times it just takes a little bit of community effort to get the job done. In this case it was getting the wrecked trailer beside the KP Highway near 64th KPN cleaned up. You remember? It has been there since Thanksgiving.

Thanks go to Phil Radcliffe for the generous offer to bring his excavator to load the debris onto a large truck provided by Steve Wilkin of Narrows Landscape & Maintenance. Steve Wilkin and Tim Kezele provided the funding to do the job and Wilkin and Kezele worked alongside Radcliffe to complete the cleanup project. On the receiving end of the debris, thanks go to Nancy Lind and Fred Ramsdell who arranged for the debris to be added to the Park District's clean up project in Home. Ramsdell also provided assistance in unloading the material at the Home site.

Nancy Lind reports, however, that over the Earth Day weekend, members of the public also added their garbage to the site in Home. Note: **This is not a public dump !!!** Please take your garbage to the proper places for disposal.

The TAX SHACK LLC

14203 Purdy Ln. NW
next to S.A.V.E Thrift Store

Kathy Hendrickson CTP
John Hendrickson CTP
Tara Hendrickson CTP
(253) 858-1553

Specializing in Individual and
Small Business Taxes,
and Bookkeeping Services
OPEN YEAR ROUND

REFUND ANTICIPATION LOANS
AND E-FILE AVAILABLE

Serving the Peninsula
Since 1986



Visa/MC accepted

Home Town Meeting

May is Historic Home Month and The Children of Home will be the focus of the next Home Town Meeting on Thursday, May 16th, at 5:30 P.M. Bring your favorite dish for a potluck. Historian Charles LeWarne (author of *Utopias on Puget Sound*) will be here from Edmonds to sit in on a round table of conversations among the descendants of early Home. This will be an opportunity for you to ask questions about little known facts regarding Home that you may have wondered about for some time. This will be a casual evening of getting together for supper and conversation.

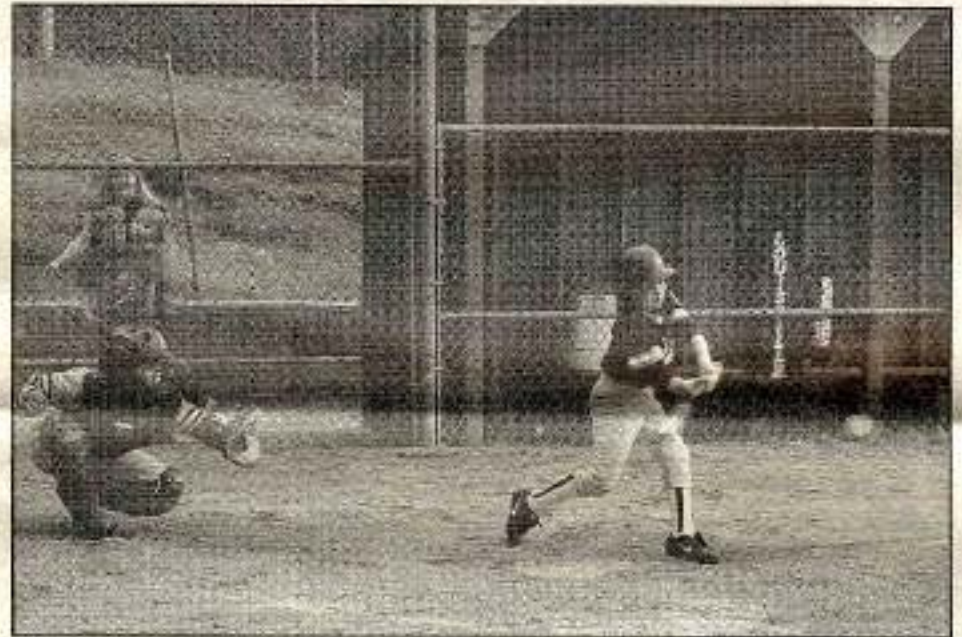
Note: Location change — We'll be at the Key Peninsula Community Center, a half-mile south of the Home Bridge on the KP Highway.



**TAX
TIPS**
By
Marv & Myrtle
Keizer, CTP

The 15th of April has come and gone and many of you are thinking that the tax season is over and gone. Wrong, we should be aware of our tax situation all year long. You say, "I claim married, zero on my W-4 and still seem to owe taxes. I have a few stocks and other investments that must be fouling up the works and I hate to file Estimated Taxes."

Look on your W-4 when you fill it out and you will notice a space marked "add'l withholding". You can have your employer withhold an extra amount above the chart deduction and this could cover your extra income. Try to do a little planning this year and you might be able to face your tax liability for 2002 without the pain of owing tax on your tax return.



Cliff English whacks in two runs for Charboneau in a very hard fought, totally good sportsmanship, close game. Final score Charboneau 7, CENEX 6.

Photo by Hugh McMillan

Are You Friendly?

Friendly Visitors is a program developed by the Tacoma-Pierce County Chapter of the American Red Cross to offer companionship through weekly scheduled visits to Pierce County's homebound seniors. This program has been designed to alleviate the incidences of isolation and depression among senior persons by providing fundamental companionship and social supports to help them maintain their physical and emotional integrity.

If you are 18 or older, are available at least one hour per week and can make a 6-month commitment, please contact Beth Elliot at 253-474-0400 to become a *Friendly Visitor*. You too can make a difference in the lives of others.

Vacation Rentals

Located in the waterfront community of Purdy

Minutes from Kitsap & Key Peninsula Attractions

1 & 2 Bedroom Suites • Daily, Weekly or Monthly

Restaurant Next Door • Behaved Pets Welcome • Satellite TV

WESTWYND
Motel & Suites

www.westwyndmotel.com

253-857-4047 • 800-366-9965 • 6703-144th St. NW, Cig Harbor

KEY PENINSULA HISTORICAL SOCIETY MUSEUM

Open Thursdays & Saturdays
1:00 PM to 4:00 PM
or by appointment by calling
884-4538



1972-2002

30 Years

P.O. BOX 577

VAUGHN, WA 98394

Key Center Library Sculpture Dedication Scheduled for June 1!



What is going on at the KC Library? Why have all the plants been removed just as they were starting to bloom? It looks awful...

Well, this is the site for the bronze sculpture created by John Jewell called "Balancing the Books".

Please join our celebration and dedication on Saturday, June 1 at 1:00 P.M. The program will include: Neel Parikh, Director, Pierce County Library; John Jewell, Artist; Molly Holmes, Friends of the Key Center Library; and Dory Meyers, Community Librarian.

The event will be graced by Irish dance and music performed by Colleen, Danielle, Haley and Tim Masbruch, and Kelly and Meaghan Shaffer. Haley and Tim will play traditional Irish flute and drum. The Masbruch and Shaffer families are members of *Scoil Rince Slielveloughane*, the largest and most renowned Irish dance troupe in the Pacific Northwest.

Following the program, there will be refreshments and a reception for the artist, John Jewell, in the Briones meeting room.

Many individuals and organizations donated their money and time to this project. Among them are: sculptor John Jewell for his artist fee (the \$13,000 which paid for supplies, foundry costs and installation); the Friends of the Key Center Library, the Angel Guild, the Cultural Arts Commission, the Morris Foundation, Boeing, and Donna Smith-Daily, Reni Moriarity and Tweed Meyer for the raffle prizes. Dale Frank contributed the cement work for the sculpture site and Mike Simoneaux, of S & A Electric, Inc. in Gig Harbor, the lighting. Molly Holmes conceived the project and organized a superb fund raising effort, mainly assisted by Dick Bates. Keith Stiles, the staff of the Key Peninsula News and the Peninsula Gateway provided excellent publicity coverage. Many, many thanks to all, especially the folks behind the scenes, and to the individual donors who are not mentioned here.

And to the staff at the foundry, the Bronze Works, who so competently and skillfully executed the complex processes that made the sculpture a reality, we extend our gratitude.

John Jewell, in addition to creating and gifting the "Balancing the Books" sculpture to the library and the community, has worked closely with the staff of Pierce County Library, the Friends of the Key Center Library, the Bronze Works foundry and in preparation of the site. Countless hours, days and months.

Please note: The Key Center Library will close early at 5:00 P.M. on Thursday, May 9th for the annual meeting of the Friends of the Key Center Library.

AIDS Memorial May 19th

The Pierce County AIDS Foundation will sponsor the local observance of the 19th International AIDS Candlelight Memorial and Mobilization on May 19th at 5 pm in Fireman's Park at South 9th and A Street in Tacoma.

Within Washington State (as of March, 2002) 10,063 persons have been diagnosed with AIDS and 5,557 of these have already died. As many as 12,000 Washingtonians are believed to be HIV infected. In Pierce County (as of March, 2002), of the 910 persons diagnosed with AIDS, 480 have died. The Pierce County AIDS Foundation, since its opening in 1987, has provided services to 1,306 persons who have sought care. It is estimated that 1,000 to 1,500 persons in our county are already infected with HIV.

For more information on the AIDS Memorial, call the Pierce County AIDS Foundation at 383-2565.

MAY MADNESS is in full bloom

BENCHES & BENCHES RACKS & RACKS ...
Filled with all of your favorite summer annuals.

**GERANIUMS * IMPATIENS
BEGONIAS * BACOPA *
PETUNIAS * MUCH MORE**

Don't Forget!
We have big beautiful
hanging baskets
**FUCHSIAS * GERANIUMS *
* MIXED MOSS BASKETS ***



**ROSES - AMERICA'S
FAVORITE FLOWER**
Jackson & Perkins® Roses
Redi-Plant® Roses

**Easy to plant,
box and all**

25% OFF

SALE GOOD WHILE STOCK IS
AVAILABLE.

Adding life to your garden - Great for Roses!



* Many fungal diseases are defeated using SoilSoup as a foliar spray. Black Spot on roses, powdery mildew, early and late blight, botrytis are diseases dramatically affected after one application.

**As Lasting as Mom's
Love.**

**MOTHER'S DAY
is SUNDAY
MAY 12th**

**Teleflora's Mother's Day Keepsake
Bouquets**

She'll love the profusion of sweet Spring flowers. But what she'll treasure forever is our fine Thomas Kinkade teapot, lavishly trimmed in gold. To send this lovely floral gift anywhere in the U.S. or Canada, just call or visit our shop today.

The Thomas Kinkade
Teapot Bouquet



WE DELIVER THE KEY PENINSULA AND WORLDWIDE
FLORAL DESIGNS * CARDS * GIFTS * BALLOONS

SUMMER BLOOMING BULBS

25% OFF

PLANT NOW FOR SUMMER COLOR.

- * Dahlias
- * Lilies
- * Gladiolus
- * Begonias



884-3937

OPEN EVERYDAY
BANKCARDS
WELCOMED



LOCATED IN KEY CENTER



THE LAW COLUMN

by Michael Misner

It's been a while since my last column and much has happened since then. I have been back in Minnesota taking depositions in a medical malpractice case and have learned, once again, that I love my little house in Home more than just about anything. Minnesota may be a great state, but it's not the Key Peninsula with its view of the mountains and its lovely bays and farms.

My case involves a poorly made medical device that has really messed up my client's brain. It seems the thing was made with an improper grade of steel that had become rusted before it was installed in my client's head. When the darn thing was removed, the doctors found that the rusted parts had become stuck to her brain. The doctors finally got the thing out of there, but the rust deposits were left behind.

The rust deposits are causing her to have seizures. In other words, she is now suffering from epilepsy. The doctors did some surgery a while ago to remove some of the rust, but they are not able to get all of it. The rust could cause more seizures in the future, and the real rotten part of the whole deal is that my client is only 21 years old.

The suit that I filed on her behalf is one called a products liability case. These cases are not very popular with the manufacturing community and, as a consequence, those folks are always trying to get Congress or state legislatures to pass laws altering a victim's right to sue for their injuries because of some poorly built product.

Unfortunately, many of our government leaders and lawmakers, from the top on down, are dependent upon the political campaign contributions from these folks and therefore support the donors' agenda. They call their plan "tort reform", but it is a lot more than that.

In law, a tort is the common law word for "injury to the person." The injury can be to the body, like my client's brain, or it can be to the emotions, such as the fear of developing lung cancer after being exposed to asbestos. It can also be an injury to one's reputation as when someone is charged with a crime after the police did a sloppy job of investigating a case. That part of tort law is called defamation of character, or what used to be called libel and slander.

Call it what you will, there's a lot of pressure in the other Washington to push through tort reform measures as part of the campaign on domestic issues. I would probably go along with this so-called reform if one thing were to happen from this day forward: from now on all manufacturers of crummy products that cause injuries such as grand mal seizures would promise to voluntarily step up when they discover their mistake and


voluntarily compensate their victims for their injuries. Sure, like that's really going to happen.

In my client's case, the company knew about its poorly constructed product way back in 1991 and never contacted my client for nearly 10 years. It started talking to her only after we sued them.

Sort of makes you thankful that the Founding Fathers created a strong civil justice system when this country was created. This system permits a 21 year old Key Peninsula woman the right to try to get a measure of justice from a company as far away as Minneapolis.

It also makes me wonder what might happen to her if the manufacturer's lobbyists have their way.

WANTED: Photos and items of local - Key Peninsula - news that you would like to see in the KP News. Deadline is the 20th of each month; earlier is better. Send to us at P.O. Box 3, Vaughn WA, 98394. Please include name and phone number for reference.



Close to Home
ESPRESSO

Mon. - Thurs., 5:30 AM - 5:00 PM
Fri. - 5:30 AM - 5:30 PM
Sat. - 7:30 AM - 5:00 PM
Sun. - 8:00 AM - 5:00 PM

Next to Wal-Mart in Key Center

FRONTIER CONSTRUCTION

"Let us bring your ideas to life"

Specializing in:
Framing, Remodeling
Garages, Decks,
Fences, Sheds

Free Estimates
Call Ed at
253-884-7956

Licensed, Bonded, Insured
Lic: FrontierX992CL

Over 10,000 Roses & 700 Varieties

RAFT ISLAND ROSES & NURSERY

Annuals & Perennials Are In!
5 gal. potted roses from \$7.95 to \$12.95

Old Garden, English, Rugosa & Modern Roses

GIFT SHOP

- * Fuchsia Baskets * Soils
- * Annuals * Perennials
- * Heather * Yard Art
- * Fertilizer * Lawn Furniture

"PICNIC IN OUR ROSE GARDEN"
7201 Rosedale St. N.W. Gig Harbor, WA 98335
Phone 253-853-7900

FROM THE NORTH: On HWY-16 going South take the City Center, Wollochet Ave., Exit (Follow signs to Kopachuck State Park). Turn right on Wollochet, at light turn right onto Hunt St., at Skansie turn right, go to 4-way stop., at Rosedale Street turn left, 1.75 miles on the right.

Over 1,000 Hanging Baskets

Discover Our "Personal" Touch For Pain

Auto Accidents
Personal & Work Injuries
Serving the Key Peninsula
For Over 21 Years



We Are Open 24/7 For Emergencies. We're Here When You Need Us Anytime, Day or Night!

Dr. Robert B. Campbell, D.C.
5110 Lackey Rd. KPN, Vaughn, WA
Call Today 884-2144 For A Free Preliminary Exam and Free Massage for all new patients.

Christy G. Campbell, LMP Specialty in Injury Treatment, Myofascial Release, Swedish Relaxation, Trigger Point Therapy, Deep Tissue Massage
Gift Certificates Available



ANGEL GUILD THRIFT SHOP

9013 KPHN, Lakebay in the KP Corral

Open Wednesday through Friday from 10 to 4
Saturdays from 10 to 3

Gently used clothing, shoes, jewelry, appliances, toys, books, linens, knick-knacks, and just about anything you can think of.

NEW MERCHANDISE IN SHOP DAILY.

Key Peninsula Parks & Recreation District

by Nancy Lind

The Key Peninsula Park and Recreation District came into being in the early 70's when volunteers built the park on the Key Peninsula Highway called the KP Sports Center (Volunteer Park) and while only a few levies have passed over the years, the District is doing well, but could do much better.

Volunteer Park serves hundreds of kids and adults for sports and recreation, and with the Community Fair coming along, the numbers go way up. In 1997, the Rocky Creek Conservation Area was leased from the county to the District for \$1 a year for 10 years. RCCA is also being built by volunteers who swarm over the 224 acres on a regular basis to do what has to be done to make it a nice park. Sometime this month, another small site in the Home area will be added to the District and another volunteer group will care for it. There are other sites and possibilities on the Key Peninsula that should be saved for parks and many groups are working to preserve these locations.

Volunteer Park is nearly 27 years old. It needs lights on the two fields near the road, an upgrade of the bathrooms and development of the upper field right now. The last levy has lasted three years (a year longer than it was called for) and it is time for the

District to ask for another levy which will be next spring. It will require some tight budgeting for the next year and a half before the money starts coming in.

There are several things that the Park District needs to get busy on very soon. We need a park plan designed just for the Key Peninsula. We need an advocate at the county level to lobby for us so that we get some of the resources that are available. We need signs on our parks that say Key Peninsula Parks and Recreation District so that the community knows what the District is about. We need someone to write grants and help us get more funding. We need to get our message out to the whole community and keep all the service and social organizations fully aware of the need for parks. And most of all, we need more paid help in the District to take the physical load of running the parks off the commissioners. The need for parks in a community to make a livable environment can't be denied.

Men's & Women's Softball is starting now. Sign up for Adult Baseball. Gosh Transportation is donating 10 ft. high fencing all around Field 1 in cooperation with Little League. This is a great gift. The lights on Field 1 should be up by May 21st. For more information or to sign up to play call the park at 884-9240.

More volunteers are needed to work with the Boy Scouts on installing the playground equipment. We also need people to do a park survey and to install a door in a concrete wall. Please call 884-9240 to help.

Come and eat at the park. Kelly's Kafe there has good food.

Coming Soon ...

Take A Voyage on the Virginia V

At long last, the Longbranch Improvement Club and the Key Peninsula will be welcoming the one and only Virginia V (that's five, not V), an original vessel from the Mosquito Fleet, to the Longbranch Marina on Sunday, June 2nd, 2002.

This vessel carries with it quite a lot of nostalgia and memories from this area. The Lorenz brothers of Lakebay built steam vessels in the late 1880's. Each new boat they built or purchased was awarded the company eagle mounted on the engine. In the early 1900's when the Virginia IV sank, the new owners moved the engine with the eagle to the Virginia V. The Lorenz eagle continues to ride on that engine of the rehabilitated Virginia V and can be seen during tours at the Longbranch Marina on June 2nd thru 5th.

This event will include a brunch cruise on Sunday, June 2nd, dock tours and a mini cruise that afternoon, an early evening cruise and tours for school children during the early part of the week. These events are being sponsored by the Longbranch Improvement Club. Costs and a more thorough agenda will be announced later.

A maritime welcome will be happening in Longbranch about 11:30 A.M. on Sunday, June 2nd. It will be full of hoopla and fun !!! Don't miss it !!!

Camp Seymour Invites Campers and Parents To Open House

YMCA Camp Seymour (located near Key Center) is sponsoring two Open Houses: Sunday, May 5 and Sunday, June 2 from 1:30 PM to 4:00 PM.

Penrose Point State Park Open

Penrose Point State Park would like the world to know that the park opened for the season March 29, 2002. Shellfish season opened early this year, and isn't in the regulation book (so people wouldn't have known about it). Clam and oyster harvesting were open April 1st through April 30th.

Support Your Local Businesses

Key to Learning Childcare



in Key Center
(253) 884-1184

Nurturing the skills to succeed in school...and life.
20 years licensed childcare, references provided.
Preschool and meals included.

Helen Macumber

*Located 1 minute from light in Key Center



Pierce County
Office of the County Council

KAREN BISKEY
Councilmember, District No. 7

830 Tacoma Avenue South, Room 1046
Tacoma, Washington 98402-2176

(253) 798-8654
(800) 892-2456
FAX (253) 798-7509



VIKING GLASS CO

588-2337

Glass
Mirrors
Shower Doors
Tub Enclosures
Insulated Glass

Call
Keith or Mike

Almost Home Boarding Kennel



Extra Large Kennels
Personal Attention
Hours: 8:00 AM to 6:00 PM
(253) 884-2633

Sandy & Nancy in Lakebay, WA



Cinderella Cleaning Services

Homes
Enhanced
Lyubov by
Popkov



(253) 884-1082
(253) 377-1953

Cleaning houses,
garages, yards, etc.
Flexible hours to fit
your individual needs.
All for a very
reasonable cost.
References available
on request.

Ryan Andreson

Domestic & Imports Black Forest Automotive

15317 Key Peninsula Highway
Gig Harbor, Washington 98329

(253) 884-3431

BULLDOZING
BACK-HOE
LOGGING



GRAVEL AND FILL DIRT
LOG BULKHEADS
SITE PREP

JOHNSON BULLDOZING CO.

LAKEBAY, WASHINGTON 98349
PHONE (253) 884-2362



DAVE JOHNSON
(253) 884-3330



PHIL JOHNSON
(253) 884-2607



MR. MIKE'S FIX-IT

Call Mike Nelson ☎ 253-884-6863

HOME
AND
BUSINESS
REPAIRS

- General handyman repairs
- Door & window repairs
- Locks fixed & changed
- Bathroom & kitchen repairs
- Gutters fixed & cleaned
- Pressure washing
- Emergency Services Available
- Lic. # MRMIKE*990RD

(253) 884-2961
(235) 851-2690



Harbor Furnace SERVICE & INSTALLATION

TOM WILLIAMS


P.O. BOX 344, Lakebay, WA 98349
P.O. BOX 1, Gig Harbor, WA 98343

Health Tip on Alzheimer's Disease

People who eat a lot of fruits and vegetables containing Vitamins C and E are less likely to develop Alzheimer's or vascular dementia caused by the hardening of the arteries than those who don't. Source: *The World Alzheimer Congress 2000*.

One of the Lifestyle Suggestions for Alzheimer's is: "If you're not on a blood-thinning medication, e.g., Coumadin, speak with your health care professional regarding the use of the herb *ginkgo biloba*. Preliminary research has shown *ginkgo's* positive effect in slowing the progression of Alzheimer's disease. Source: *Growing Old Gracefully*."

Submitted by Dick Pettrey



To Your Health

by William F. Roes, M.D.

In a recent edition of *Washington Family Physician*, Dr. Jane Moore of Tacoma wrote about a syndrome new to me, known as Sedentary Death Syndrome. She calls it the second greatest threat to our public health. Since I'd never heard of it, I was intrigued to think I had missed such an important health risk, and I found the article quite informative.

Sedentary Death Syndrome is the consequence of a life that lacks physical activity, resulting in premature death from a combination of factors, all associated with inactivity. She points out that one of the main complicating factors is obesity. The number of obese people (adults and children) in the U.S. has doubled in the last 20 years, to the point that almost two-thirds of Americans are overweight. New studies have indicated a close link between adult-onset diabetes and lack of activity, and now we're seeing the adult type of diabetes showing up in children. The risks from inactivity include an increased cholesterol level, high blood pressure, depression, arthritis, osteoporosis and a number of other maladies.

The treatment of the syndrome is actually prevention — moderate activity. It doesn't really take much, the experts recommend 30 minutes a day, 5 days a week. It doesn't have to be "exercise", but some type of activity that increases your heart and breathing rates. People can often accomplish this with daily chores, walking the dog, sweeping floors, or vigorous housework, and it can be broken into segments of ten minutes each. The point is to do something to get your circulation moving. A New Zealand study suggested that physicians who actually wrote prescriptions for exercise for their patients were more successful in motivating their patients. The next time your doctor writes you a prescription for an expensive medication, don't be surprised if you also get one that won't cost you anything: "Brisk Walk tid (three times a day) QD (daily) to prevent SeDS (Sedentary Death Syndrome)".

55 Drive To Survive Safety Course

Several sessions of the 55-Alive course will be available at the Home Fire Station for those over 55 to refresh their driving skills. The cost for the two day course is \$10 per person. Taking this course may result in a reduction on car insurance. The dates are:

May 14th & 15th — 8:00 A.M. to 12:30 P.M.

September 17th & 18th — 1:00 P.M. to 5:00 P.M.

November 12th & 13th — 8:00 A.M. to 12:30 P.M.

Call 884-4407 for reservations for any of these sessions. Sponsored by the VFW Auxiliary.

Down Home Band Rides Again

The Down Home Band will begin the season's practicing on Tuesday, May 7th at 7:00 PM at the Key Medical Center - 15610 89th St. in beautiful downtown Key Center. We welcome anyone who plays a band instrument to join us. Show up to the practice or call 884-9221.

Hear Ye! Hear Ye!

For at least six good reasons, Governor Gary Locke has officially proclaimed May 22, 2002, as

Relatives Raising Children Day in the state of Washington and he further urges all citizens to join in this special observance.

Support Your Local Businesses

Rototilling

\$30/hour

Courtesy Lawn Care
Reliable Service & Reasonable Rates
884-4875

Windermere Key Realty

the *only* local
Key Peninsula Real Estate Company
ready to meet all your real estate needs.



Office: 884-3304

Doug's Quality Sheds

8-8' \$995, 10-10' \$1495
Wood or Concrete Slab Floors
"Way better than Home Depot"
884-4875

L & D PLUMBING, Inc.

"PLUMBING & REMODELING"

LLOYD D. MERRELL

20411 - 17th ST. KPS
LAKEWAY, WA 98349
CONTRACT REG. NO. LDPLUR*055MC

BUS: (253) 225-3315
LICENSED & BONDED

Septic Systems * Underground Utilities * Site Preparation
Dump Truck Services * Road Building * Land Clearing
Stump Burning * Hauling

ABBA

Backhoe & Dozing, Inc.

(253) 851-4067
ABBABD1053Q8

PO. Box 671
Wash. WA 98393



CHARBONEAU EXCAVATING, INC.

EXCAVATING SERVICE

Road Building * Developments * Grading
Underground Utilities * Foundation
Site Preparation * Land Clearing
Stump Hauling * Dump Truck Service

LJC #223-01-JE-EF-CE*S220KUP
(253) 857-5125

11612 SR 302 NW
Gig Harbor, WA 98329

We'll Transport Your Best Friend

- To the vet
- To the groomer
- Personalized Service

Nancy Wakefield
Owner

Pet to the Vet



Custom Services

Phone: 253-857-9227
Cell: 253-222-2902
Fax: 253-858-2746



Plummer

Construction & Excavation

Mark Plummer
General Contractor/Developer

Excavation * Land Clearing * Septic Systems * Site Development *
Utility Installations * Drainage Solutions * Road Building *
Stump Removal * Mobile Home Installation * Retaining Walls

Serving Pierce, Mason and Kitsap Counties

#PLUMMCE033PW (253) 884-5588

TONY'S LANDSCAPING

- Pruning
- Tree Cutting
- Weeding
- Total Lawn Maintenance
- Topsoil/Bark
- Sod/Seed

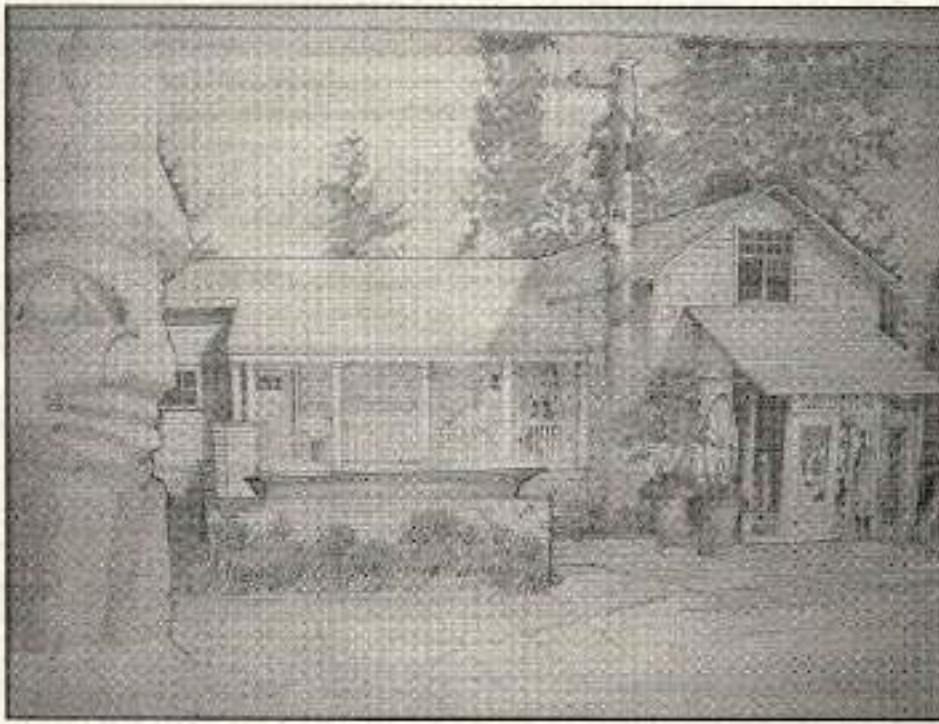


Residential / Commercial

Tony Fuoco
Owner

message: 691-1787
pager: 596-9943

Hear And Their On Our Key Peninsula



Artist's drawing of Key Peninsula Historical Museum prepared plan.

by Keith Stiles

The Key Peninsula Historical Society is taking major steps towards the enlargement of the Museum at the Civic Center, kicking off the project with the unveiling of a tentative plan at the group's Annual Meeting on March 28th. President Tim Kezele introduced members of the architectural firm of Olson, Sundberg, Kundig and Allen (of Seattle) who presented drawings for an addition that would provide greatly increased display space, more office space and an indoor meeting area, all surrounding an outdoor courtyard. The new addition will be named "The John and Addie McMenamin Research Area" to honor that couple who contributed so much to the organization and documentation of Key Peninsula history. With much of the first conceptual work now finished, the group will be turning to the task of fundraising of both cash contributions and "in-kind efforts and materials." Just how long this will take and what grants might be available is not known at this time, but the project is expected to be a major effort for the group during the balance of 2002.

Members of The Key Peninsula Business Association held a busy luncheon meeting on April 19th with featured speakers Jonathan White of Peninsula Light Company and Barbara Ann Smolko of the Pierce County Public Works and Utilities Department. White had lots to say about the PenLight "Green Power Program", which supports the purchase and development of electricity generated from wind, sun, geothermal and other renewable resources. PenLight is sponsoring a "Wind and Wine Tour" on June 14th and 15th, an overnight visit to a field of giant wind generators near Walla Walla, along with some other trip "goodies".

Barbara Ann Smolko serves as a Water Quality Advocate for residents of Pierce County, linking residents and neighborhoods who have water quality problems with Health Department officials and solution/enforcement employees of the County.

Other KPBA news included the announcement that a grant has been received to identify historical places, buildings, homes and other sites on the Key Peninsula, and a committee was formed to investigate and document the spots to be so listed. A possible tour of such sites, once documented, was also discussed. It was also announced that plans for this summer's "Keyfair" are moving along well with a number of sponsors and vendors signed on. There was much discussion of the various "Keyfair" activities and just who would be doing what.

Other KP News in Shorts: One of the lady members of the Biz Association helped nail a U.S. mail thief on a recent Sunday morning. Thief said to have been from Seattle area with a car full of stolen stuff as well as mail; give your mail box lots of TLC and attention...More local crime news: it seems a number of local shop and business truck thefts and vandalism events were cleared up by a mid-Peninsula arrest about five weeks ago; the story reaching me is that there was a lot of "do-it-yourself" by the victims (and friends) in getting the job done... Cheers for Fred Ramsdell, Tim Kezele, Phil ("Dirt") Radcliff and Steve Wilkin for getting some much-needed cleanup done on the highway between Key Center and Home...Betty Barkubein was elected incoming president of the Angel Guild for 2002-2003; that group distributed over \$50,000 during the last year, divided among a large number of worthy projects...Jeff and Debbie Hartjoy, formerly of Longbranch, continue their 15-year "Around the World Sail" and are now investigating old WWII airfield sites and old Mercury Spaceship Tracking equipment, all left behind on Kanton Island, now part of Kiribati, in the South Pacific, living, they report, on 100 bucks a month and all the coconuts and colorful fish one can eat.

The Canine Bird

There is a species of bird that is often compared to a dog. No, that is not a misprint. The *Cockatoo* is frequently called the *Golden Retriever* of the aviary world because of the bird's easy going nature and personality.

Cockatoos are not typically overly active birds. Like the *African Grey* or the *Amazon*, they usually bond to only one member of their human family. If raised from a very young age, they become devoted to all members of their human family. However, unlike the *African Grey* and *Amazon* who usually have a large vocabulary, the average *Cockatoo* utters few words.

There are five species of *Cockatoo*, each considered by experts as a true "family pet". The larger of the species are the *Mullican*, *Sulfur Crested* and *Umbrella Cockatoos*. The two smaller species are the *Citron Crested* and *Goffin's Cockatoo*.

Submitted by Robert McCrossin, Bayside Animal Lodge, Ltd.

CALLING ALL SCRAPBOOKERS ALL LEVELS - AGES 10 & UP !!

Scrapbooking is coming to the KPCC! This crop session allows you to take time to organize your photos, share ideas, work on lay-outs, use special tools and create scrapbook pages for storing your precious memories.

Starts Saturday, May 25th, from 10 A.M. to 12 Noon. Three ways to pay - \$7 pre-registration, \$8 at the door, or pre-register with a friend and pay \$12 for 2! Pre-registration must be received no later than 6 P.M. on Thursday, May 23rd.

These crop session/workshops will be offered by KP's newest Creative Memories TM independent consultant, Lisa Bundrick. For additional information or for a registration form, please contact her at (253) 884-1090 or e-mail: lhebundricks@yahoo.com. Registration forms are also available at the KPCC office.

Registration and payments may be dropped off at KPCC or mailed to Crop Shop, c/o Lisa Bundrick, P.O. Box 468, Vaughn, WA 98394.

BITS & PIECES CUSTOMIZED COMPUTERS

Upgradable and built to
YOUR Specifications!
PARTS AND
INSTALLATION
Also Available

Contact: Phil Luder
253-884-6688
pluder@prodigy.net

KPCCA Executive Committee 2002

- President**
Dave Stratford, 884-2566
- 1st Vice-President (Maintenance)**
Loyd Miller, 884-2536
- 2nd Vice-President**
Tim Kezele, 884-4538
- Treasurer**
Vicky McClung, 884-1940
- Secretary**
Rick Krum, 360-895-3299
- Members-At-Large**
Phil Bauer, 884-9172
Sylvia Haase, 884-3603
- Past-President**
Dale Loy, 884-4169/884-3937

Memorial Day Dance

SATURDAY, MAY 25
8:00-12 midnight

LONGBRANCH IMPROVEMENT CLUB

**** JUNKYARD JANE ****
Nationally Famous Blues Band
Cash Bar
Tickets \$12.00

Advance sales at Longbranch Marina,
Sunnycrest Nursery and Home Store
Remainder sold at door

!!!! JOIN THE FUN AND DANCE THE NIGHT AWAY !!!!



VENDORS WANTED

Yard Sale Items
Spend the day, have fun and sell
your items for \$10 all day.

Make your SWAP MEET worth it!

Located at the corner of Hwy. 302 and Wright Bliss Rd.

Across from the Texaco. Look for the white fence.

For more information call Jerry @ 253-884-6700

Historic Chapel By The Sea

by Colleen Slater

In the early days of Vaughn, settlers were ministered to by traveling pastors, and Sunday services were held outside on pleasant days. The little log schoolhouse served for Sunday School classes as well as church services as early as 1886, with four families living in the area.

The earliest pastors were Methodists, followed by Presbyterians, an Episcopalian, and in 1908, Congregationalists. Some lived in the area, but most arrived to conduct a service, share a meal with a local family and move on.

Thomas Weeks, for example, arrived by freight boat on Saturday, stayed with the Van Slykes, held services in the hall on Sunday morning, walked to Rocky Bay for dinner, went by boat to an evening service in Allyn, and back to Tacoma on Monday morning.

In 1889, a Library Hall was erected on a piece of Alfred Van Slyke's property, on what had been built as a dance floor for the previous July 4th celebration. Church services were then held there as it was a larger gathering place to accommodate the increased population.

Reverend Applegate arrived and operated a lumber mill. He decided to use his lumber and inheritance to build a church building for Vaughn in memory of his mother. He purchased land from Alfred Van Slyke, and with the help of Dr. Taynton, constructed a Swiss style building using shingles from local cedars both inside and out.

Applegate's mill was destroyed by fire, and since he had not paid for the church property, Van Slyke took it back, then resold it to Applegate for \$1. Applegate eventually decided it to the church. Completed in 1898, Episcopalian services were held there while Reverend Weeks continued Presbyterian services in the Hall. Later, the Presbyterians were invited to use the church for their services also.

Sometime around 1915, there was a split in the then Congregational Church over theological issues, and some families left to form the First Christian Church some 400 yards east, on property donated by Thomas Bill.

A new generation of young married couples began meeting in 1948 to discuss rejoining the church bodies, as they were all friends and wanted to worship together. Eventually they convinced their parents and grandparents to merge congregations into a community church. The reluctant elders opted to give the new organization a trial period, and retained their own church buildings and governing boards until 1956.

Thus the Vaughn Community Church was formed, continuing to serve the community in the 'Chapel by the Sea' reflected in the waters of Vaughn Bay.

Much of this information was obtained from "Parade of the Pioneers, II" by Peggy and Joe Dervaes (1989) and was used with permission. It includes the text of both "The Chapel By The Sea" by Josephine Welsh (1939) and "The Parade of the Pioneers" by Bertha Davidson (1961) All are available at the Key Peninsula Historical Museum.

The Big Two

Part 2: Arm and Shoulder Pain

by Dr. Robert B. Campbell, D.C.

Of all the physical problems we humans suffer, the big two surely qualify for first prize - at least in terms of lost work time, lost play time and plain old pain and anguish.

Many conditions are far more perilous, but none surpass the big two's ability to utterly incapacitate an otherwise healthy man, woman, or child.

ARM AND SHOULDER FACTS

* **The "shoulder" joint** is actually a complex arrangement of seven joints, which must function in harmony. Because of the shoulder's complexity, it is a frequent site of pain and trouble.

* **You should** be able to extend either arm straight in front of you (palm up) and easily turn your hand completely over (back of hand up) without stiffness or pain in the arm or shoulder.

* **You should** be able to extend either arm straight up and bring it down to your side and back up again (a full circle) in either direction without stiffness or pain in the arm or shoulder.

* **Usually**, the underlying cause of arm and shoulder pain is misaligned vertebrae and concomitant conditions such as muscle spasms, poor posture, whiplash injury and other injuries, radiculitis, arthritis, bursitis or other problems.

* **Sometimes** pain is referred to the arm and shoulder although the problem may be elsewhere.

* **Occasionally**, arm and shoulder pain is due to a spinal birth defect.

* **Pain may vary** from mild to severe and may come and go.

* **The degree of pain** does not necessarily indicate the severity of the underlying cause. A thorough chiropractic examination may be indicated to determine the cause and extent of the problem and what can be done about it.

* **Often**, any of the above symptoms indicate misaligned vertebrae (subluxations) calling for chiropractic care.

If you would like more information, please do not hesitate to call our office at 884-2144.

Rummage Sale -- Saturday, May 11 -- By Morning T.O.P.S.

The fast-growing Morning TOPS group is following in the footsteps of our parent, the Evening Vaughn TOPS group. We are going to have our Rummage Sale at the Home Fire Station on the KP Highway from 9:00 A.M. to 4:00 P.M. on Saturday, May 11th. Furniture, large clothing and household items are only a few of the goodies you will find there.

Spring is also the time we elect new officers. We are excited to welcome **Dottie Ohnstad** as our new leader and **Janet Schleif** as co-leader. **Lucille O'Doughty** is secretary and **Mary Nelson** is treasurer. We look forward to seeing LESS of ourselves in the coming year. (That's a weight loss joke.)

The best losers for this month are **Andrea Davies**, who lost 7 3/4 pounds, for best loser status and **Janet Schleif**, with a close 7 pounds. We are sooooo proud of these two and wish them continued success through the summer.

If you would like to meet these successful losers and see what T.O.P.S. (Take off Pounds Sensibly) has to offer you, please come to visit us at the Home Fire Station on a Tuesday morning from 9:00 to 10:30. Call Dottie (884-1721) or Janet (884-9274) for further information. Men and women, ages 7-99+ are welcome.

Olalla Bluegrass Fest Wants Some Student Musicians

The Olalla Bluegrass Festival is calling for youth to perform at the 11th annual event. Solos or groups, vocal or instrumentals of acoustic "old timey" or bluegrass music are welcome. The first auditions will be on May 4th from 3-7, the second auditions will be on June 1st from 3-7. To schedule an appointment for an audition, call Charlee Glock-Jackson at 253-857-5604 or Carol Foley at 253-858-8074.

*Some people order a sandwich,
And say, "Hold the mayo!"
But for you, Dee, we make a wish
For a "Happy Cinco de Mayo!"*

Thousands of Toxic Sites Cleaned, Additional Ones Identified

Citizen initiatives generate a lot of arguments, but one of them, I-97B, adopted in 1989, has generated good results for Washington. The Model Toxics Control Act (MTCA) imposed limits for toxic substances in soil, air and water, and also imposed a tax on hazardous substances to help pay for cleanups. Of some 9,000 sites that have been identified, about 4,800 have been cleaned up or require no further action.

According to Jim Pendowski of the Department of Ecology, the cleanup program has grown and over the years has improved significantly. "We started with 678 suspect sites in 1990 and have added several hundred a year since then," he said. "The good news is that the list is growing at a slower rate than the early years, so we hope we're finally getting ahead of the problem."

Despite the progress, there still are substantial cleanups facing the state, including marine and freshwater sediments, mining wastes, and pollution from former smelters. But, according to Ecology Director Tom Fitzsimmons, "Thanks to our voters, Washington has probably the most comprehensive and successful toxic-cleanup program in the country. We have an ongoing, steady funding source that has enabled us to pioneer new cleanup technologies and support local communities through some long-term, difficult cleanup projects."

Historic Vaughn Bay Church

Open Public Meeting to share our history and intent to maintain a church on Vaughn Bay

May 19 at 6:30 PM
**Key Peninsula
Civic Center**

Everyone invited to attend

AFFORDABLE PET GROOMING

"Your Pet is the heart of our business"

NOW OPEN IN KEY CENTER

(Over 30 yrs. experience in all breed Pet Grooming)

\$3.00 OFF Haircut - If you bring in this ad.



Expires May 15, 2002

884-4844

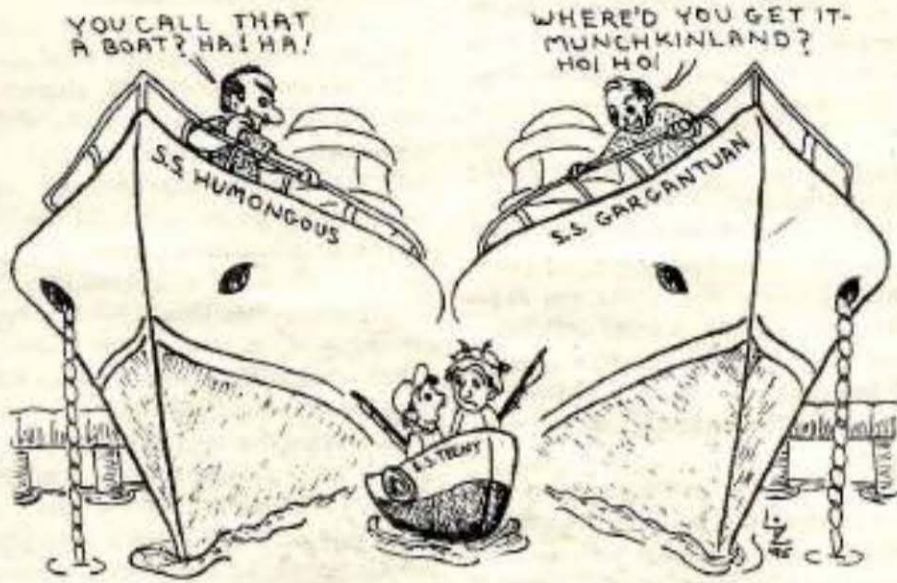


8912 KPN, Suite #2
Key Center, WA
(Next to Shear Magic)

1919 Mildred W. #F
Tacoma, WA 98465
(Over 30 yrs. at location)

Another View

by Liz Kassler



“Pier Pressure!”

<http://lizkassler.com>



YESTERDAY'S TEENAGERS!

Key Peninsula Senior Society
by Jim Nolan @ 851-4847

Greetings. April was QUITE A MONTH wasn't it? Springtime; a teeny bit of summer; some nasty winter left over; plus blustery WINDY times; and of course, RAIN-RAIN, in showers, downpours, mists, and You-Name-It type of precip. But it did bring us lots of growth and May flowers are here - looking lovely on the Peninsula. So we'll look forward to a bona-fide Key Peninsula spring and summer - FROM NOW ON !!!

APRIL FOR KP SENIORS: We had a couple of "special" party luncheons. One on April 4th with Ham and a special party atmosphere and another on the 25th with special birthday and service recognitions for various members. You can join us any Thursday for Senior Potluck Lunch meetings with cards following. Plus there's a Special meeting each Month - so join us on May 2nd, and you won't miss a thing.

EACH MONTH - A SENIOR SURVEY. On April 18th, we asked a pertinent Survey Question: "In view of the situation in Israel/Palestine, do you think the violence there will widen or narrow? Regrettably, our group was very pessimistic about chances for peace between the Palestinians and Israel. All (some 16) Seniors present voted "widen". Sorry to report, we all felt the chances for peace in the Middle-East soon were slim to none.

We assume that our President, Virginia Adkisson, our Treasurer, Erma Dunn and our Hospitality Chairman, Bea Emil enjoyed their recent jaunt to Reno. They won't say if they won or lost, just that they enjoyed the trip. Hmnmnmnm!

Kudos to Chuck Williamson for volunteering to feed all the hungry Little Leaguers who came to the Center on a Saturday in April for breakfast. The profit from that Saturday of work by a team of volunteers went to the Civic Center and Little League.

And finally — A little girl, noticing a few strands of white hair on her mother's brunette head, asked, "Why are some of your hairs white, Mom?" Her mother explained, "Well, every time that you do something wrong or make me unhappy, one of my hairs turns white." Her 5-year-old daughter thought about that for a moment and then asked, "Momma, how come ALL of grandma's hairs are white?"

Hmnmnmnm - All mine are white from trying to meet this deadline.
Cheers until next month.

Lakebay Fuchsia Society

The May meeting of the Lakebay Fuchsia Society will be on Thursday, May 2, at 7:00 P.M. at the Key Center Library. The guest speaker will be Nancy Andrews of the Foxglove Herb Farm. She will talk about growing and cooking with herbs. Guests are welcome.

The annual plant sale will be at the Civic Center on May 11th

KPCC ASSOCIATION

2002 CALENDAR OF EVENTS

HARBOR HEIGHTS SCHOOL AUCTION	May 4th
JAZZ IN JUNE	June 1st
KPCCA FIREWORKS DEMO	June 29th
FIREWORKS BOOTH SALES	June 29th - July 4th

**We're
More Than
Just Light**



Low Income Seniors - Penlight offers a 25% discount to low-income seniors. The discount applies to residential services only. Fees and miscellaneous charges are not discounted. To qualify you must be 62 years of age or over, live within Peninsula Light's service territory year-round and not live in federally subsidized housing.

For information on any of these payment programs, please call Customer Service at 857-1510 or 1-888-809-8021.



Peninsula Light Company
A Mutual Corporation • Member Owner
Serving the Community Since 1925



Monday 9:30 to 11:00 AM. or 4:00 to 5:30 PM.

Wednesday 9:30 to 11:00 AM.

Thursday 7:30 to 9:00 PM.

@ Key Peninsula Civic Center,

Iyengar Style of Hatha Yoga

Taught by Laura Huddleston

You will improve flexibility, strength and balance with Yoga. You may drop in to check it out and see if it is right for you. Drop In Fee Per class is \$10.

Each 7 week session \$60. 2 classes per week \$100.

Register at the Key Peninsula Civic Center. or Nature's Renewal: 8903 Key Peninsula Hwy. Key Center
Call 884-3456 K.P.C.C. or 884-6150 N.R.



Groundbreaking for First Habitat for Humanity House in Area

A ground-breaking ceremony was held in the rain on April 13th for the first Habitat for Humanity house this side of the Narrows. Prospective owners Angie Easterly and Mike Knapp were selected for the honor by the local Gig Harbor/Key Peninsula Chapter of the Tacoma/Pierce County affiliate of HFH.

Habitat for Humanity Application Meeting Scheduled

Habitat for Humanity is a Christian ministry actively working with families in need to build simple, decent and affordable homes. The house, built by the selected family and volunteers, is then sold to that family at no profit and with no interest, resulting in a very affordable mortgage. We select families living in substandard conditions that meet the financial qualifications and exercise willingness to partner in the completion of the house. Substandard living conditions can include overcrowded, unsafe, unhealthy and poorly maintained living situations. The household income of these families must fall between 25 and 50 percent of the median income in Pierce County (about \$14,050 to \$28,100 per year for a family of five). Income for everyone in the family is factored - salaries, food stamps, child support, TANF, SSI, EIC, etc. The partnering includes 500 hours of "sweat equity" working with HFH volunteers to build their home and the homes of other families.

An application meeting is scheduled to extend this opportunity to families on the Key Peninsula on **Saturday, May 4th at 2:00 P.M.** at the Key Center Library, 8095, KPN. Attending a meeting is the only way to obtain a Habitat application. Applicants will be required to bring COPIES of pertinent information to the meeting. Call **627-5626** to obtain a specific list concerning these requirements.

Letter to Civic Center:

Dear Civic Center -

Today is Earth Day. We planted these flowers for you today, because you are so nice and let us use the building. They are special flowers. They are Sunflowers.

Love Troop 5440
 Teresa Nichole Bonnie
 Kristy Wibe
 Stefani M. Hannah Carlson
 Jamie Fairbanks

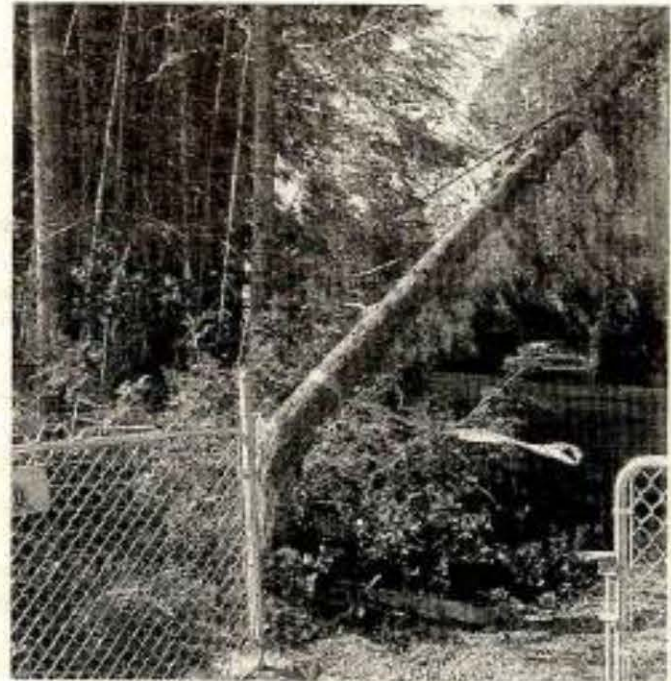
Cherie Alegrete
 Juana Carlson
 Claire Smart
 Tyler
 Emily
 Kierdra Brown
 Ashleigh Collette
 Rebecca

Wild Winds & Toppling Trees Cause Damage in Vaughn

Two large cedars from a single root were tipped by Mother Nature onto the vehicle which had been parked in the path of their crushing blow off 18104 Crescent Beach Road in Vaughn when the winds blew in mid-April. The car looked as if it had been mechanically compressed by a junked-car dealer.

A day later a fir tree on Lackey Road across from the Lutheran Church in Vaughn was broken about three feet above ground and stayed hanging on the telephone lines, blocking the driveway and threatening cars on the road, until removed by a crew.

Enough, Ma! We want some sunshine!



Top photo by Marty Marcus, Bottom photo by Hugh McMillan



Protect Yourself From Future Quakes

Last year's 6.8 quake spread panic and caused a lot of damage throughout the Sound. Subsequent quakes in the Satsop and Spokane areas, though less severe, were reminders that there are many unstable seismic faults in the Puget Sound region. The Washington Insurance Council offers some tips for homeowners and renters to help protect their homes and families next time things begin to shake:

- Gather and store emergency water, non-perishable food and first aid supplies.
- Know where and how to shut off main switches and valves.
- Have a flashlight and a battery-powered radio available.
- Store large and heavy items on lower shelves. Fasten shelves to walls securely.
- Brace or anchor any high or top-heavy objects.
- Deep plaster cracks in walls should be checked. Such cracks especially on ceilings, could result in large pieces of heavy plaster falling and causing injuries.
- Sketch a floor plan of your home and identify safe places to seek out during an earthquake.
- If your home was built before the 1970s, consider retrofitting to fasten your home's frame to the foundation.
- For a free brochure on how to protect yourself and your property from an earthquake, contact the Washington Insurance Council at 206-624-3330.

Some Important Info From Peninsula Light Co.

- The Northwest is going to be needing (and getting) more power.
- Bonneville (BPA) transmits most of the power used in the Northwest.
- BPA's lines can't handle more power, so they need to borrow more \$\$ to upgrade their lines.
- Congress needs to hear from us that it's important they approve BPA's request to borrow more \$\$.

The Garden In MAY 2002

by Sylvia Retherford
(253) 884-2487



The greenhouse is full of tomato plants ready for the Bayshore Garden Club Plant Sale at Charbonneau Construction and Supply on Highway 302 on May 4th. Many plants are in bloom and some even have set fruit. There will be a wide assortment of other plants in addition. The tomatoes are all non-hybrids from German, Amish and Austrian heirloom seed chosen by the Hoovers who are the tomato experts in Longbranch. Tomatoes do not cross pollinate naturally, thus these have remained relatively pure over hundreds of years. Tomatoes are usually set out in mid-May to early June. If they have set fruit, it will usually go ahead to ripen.

Bearded irises are just starting to bloom and, with an assortment of varieties, will continue well into summer. The dwarf varieties bloom earlier and thus are about through. One variety will bloom again in the fall. Russell lupines and columbines are interplanted with the bearded iris to provide some color in the bed in summer and early fall.

The many different colors of Japanese iris growing in their wet spot will bloom a little later. They are a joy, with their saucer shaped blossoms so different from the bearded iris.

Delphiniums are showing their first bright blue buds. They have three bloom periods - late spring, summer and fall. Monk's hood (*Aconitum*), another intense blue, is also showing some color. "Black lilies" (*Dracunculus vulgaris*) have deep purple blossoms atop their black spotted stems.

Root crops and salad greens should be

usable now. Onion sets, cucumbers, summer and winter squash or young plants can be planted. Next winter's crops, such as Brussels sprouts, cabbage, cauliflower, broccoli, kale and root crops, are usually planted a little later in mid to late June.

Bayshore Garden Club

The Bayshore Garden Club will meet at noon on Friday, May 17th, at the Longbranch Improvement Club, with lunch by hostesses Ada Breithaupt and Ann Waldo. Doris Hoover will talk about lilacs, Ruby Hatch will show a design, and Doris will also do the conservation/energy presentation. Guests are welcome. For more information, call Sylvia Retherford at 884-2487.

Vaughn Bay Garden Club

The May 15th meeting will be a noon potluck at the home of Jean Kesterson, with Margaret Whittlesey as co-hostess. The planning for hostesses and programs will take place at this meeting.

For information, please call 884-1527.



Champion debaters, Eddie May and Brianna Herrera

Photo by Hugh McMillan

Peninsula High School Debate Champs

PHS Juniors, Eddie May and Brianna Herrera, took first place in their division in the Washigo State Speech and Debate competitions. Former School Board chair, Barbara Trotter, who is the PHS Debate coach, said "May and Herrera won a First Place for their Dramatic Duo entry some time ago at Pacific Lutheran University - their very first time competing! They then went on to qualify for the state tournament at University of Puget Sound, and were our team's only qualifying entry to State. Several other team members came to the tournament, anyway, just to cheer them on." The team is small, composed of three juniors and four seniors. "These are kids who are already carrying a heavy academic load... [They] are hard workers, achievers and competitive," she added. "In a word, they're great"

MVP Physical Therapy

Orthopedic & Sports Rehabilitation

Key Center - next to the library, 8903 KP Hwy N

253 884-0841

- ❖ Orthopedic Therapy for musculoskeletal pain or post-surgical rehab
 - ❖ Hand Therapy with custom splints if needed
- ❖ Women's Health treatment for pelvic pain or incontinence
 - ❖ Post-stroke rehabilitation
- ❖ Balance classes using T'ai Chi forms

Accepting most insurance plans or private-pay arrangements

Nearby MVP clinics are located in:

Port Orchard (360 874-8009) and Gig Harbor (253 853-1464)

MVP is a locally-owned company dedicated to providing effective and enjoyable treatment, with 13 clinics serving Pierce and Kitsap Counties

LAKEBAY ROOFING

Pierce, Kitsap, and Mason Counties

- RESIDENTIAL •
- RE-ROOFING •

SHAKE • TORCH DOWN • TILE
COMPOSITION • CEDAR
SHINGLES

Free Estimates

884-2186

Tom Rolfzen - Owner

WN. ST. CONSTR. REG. LAKEBR*1570K

Lakebay Community Church

An Evangelical Covenant Church
Pastor Chuck Wahlstrom

"Bringing the truth of God's Word
and a demonstration of Jesus' love
to the Key Peninsula"



Sunday Worship Service
10:30 a.m.

Sunday School
9:15 a.m.

Pioneer Club
Wednesday 6:30 p.m.

11 Cornwall Rd., Lakebay
(1 mile south of Home Bridge)
Phone: 884-3899

MYR
MAR

WE ARE
INCOME TAX
EXPERTS!

- Individual & Corporate Tax Returns
- Monthly Bookkeeping Services Payroll
- Financial Statements
- Business Consulting
- Notary Public



- Fax & Copy Service
- Quickbooks Consulting

Evening & Saturday
Appointments
Available

* Peachtree Account Care

Myr-Mar Accounting Service, Inc.

Members of NISTP,
WSTC & KPBA

884-3566

Marv & Myrtle Keizur, CTP

Visit Our New Web Site
www.MYR-MAR-ACCOUNTINGSERVICE.COM
www.moneytalknetwork.com

KEY PENINSULA HEALTH CENTER
8903 Key Peninsula Hwy. N Lakebay

Serving

Individual Investors
Since 1871

- | | |
|------------------------------|---------------------------|
| Stocks | CDs |
| Mutual funds | Money market funds |
| Bonds | IRAs |
| Government securities | Tax-free bonds |

... and much more.
Call or stop by today!

Serving individual
investors from more than
7,650 offices nationwide.

Connie R. Rose
5775 Soundview Dr. Ste. 203-C
Gig Harbor, WA 98335
253-853-7988

www.edwardjones.com

Member SIPC

Edward Jones



Caye Williams

"Always a beautician.
Sometimes a magician."

884-2003
8912 Key Peninsula Hwy N
Lakebay, WA
98349



Questions & Answers Financial Focus

Submitted by Connie R. Rose

Help Boost Your Income, Even When Interest Rates Fall

If you depend on fixed-rate investments for income, you're probably concerned about low interest rates. Fortunately, you can take steps to potentially boost your cash flow. For example, you can build what's called a "bond ladder". By owning a group of bonds that mature at different times, you may be able to increase your income while protecting yourself somewhat from the effects of fluctuating interest rates. You also might consider stocks that pay dividends. Over time, dividend payments can add to your income. But when you're looking for dividend-paying stocks, be careful. Some companies issue high dividends one year, only to cut them the next — and stocks are subject to market risks. That's why you need to look for high-quality stocks that have a long history of increasing dividends. These companies may not be flashy, but they can give you what you need: steady income.

Domestic Violence: Children See, Hear and Know

Billy, 4 years old, sits at the top of the stairs with his bear. All day, his mother acted strangely, jumping each time the dog barked or the phone rang. When his father got home, his mother sent him upstairs to play quietly. Right now, his father is screaming at his mother in the kitchen. Billy doesn't understand the words, but his mother is crying. Suddenly, he hears a loud noise, hears something break, hears his mother scream. He runs to his room, curls up in his bed, and holds his bear tightly.

Unfortunately, Billy's experience is not isolated. Studies indicate that as many as one-third of American children have witnessed violence between parents. Sometimes, adults believe that as long as children do not see the violence, they are protected, but, like Billy, they are aware of what is going on — they hear fighting, they feel the tension and they see the aftermath. And they remember.

Most children who witness domestic violence manifest some symptoms associated with trauma. They may have trouble focusing or concentrating in school, they may be aggressive, and they may come to believe that the adults in their lives cannot protect them. It is possible that witnessing domestic violence places children at risk for engaging in many unhealthy behaviors as they grow up.

So what can we as a community do to help children who live with domestic violence? We can listen to them without minimizing their experience. Remember — someone who batters a partner can be the same charming neighbor we invite for dinner. We can foster children's self-esteem, reminding them that they are loveable and not responsible for the violence. And we can remember the importance of holding the person who is abusive accountable for the violence, not the adult victim or survivor.

Locally, the Gig Harbor/Key Peninsula Family Violence Prevention Project is working to reduce the amount of domestic violence in our communities and to increase the support available for children and families. If you are interested in finding out more, please contact them at ghkpfvpp@msn.com. If you or someone you know is being affected by family violence, call the Pierce County DV Helpline at (253) 798-4166.

Submitted by Alisa Velonis, MPH, a Prevention Specialist with the Tacoma-Pierce County Health Dept.

Pierce County Medical Society Presents Dr. Roes Its 2001 Community Service Award

The PCMS annual Community Service Award came as a complete surprise to Dr. Roes, who insists that he was recognized because, "I just happened to get more publicity than other members." In contrast to an urban setting, his patients are primarily older, poorer and have less access to care. His office is also open once a week for well-child visits, offering immunizations and preventive care at little or no cost to patients. And what's rather unusual in the medical profession these days, Thursday mornings are set aside for home visits to homebound patients.

Aside from being the primary care physician for so many of us here on the Key Peninsula, Dr. Roes has been medical director for the Rocky Bay Health Care Facility for the past 15 years; and for 12 years he has been medical director of Trinity Neighborhood Clinic in Tacoma, an all-volunteer program. He has somehow managed to find the time to be active in the PCMS; to be President of the Pierce County Chapter of the American Association of Family Practitioners; to Chair the Department of Family Practice at Tacoma General Hospital; to be Chief of Staff at Tacoma General in 2000; and to be President of the Medical Staff for Allenmore in 2001. And let's not overlook his efforts as one of the founders and director of the Down Home Band, which has performed at so many Key Peninsula functions, nor his *To Your Health* series of articles for this paper, now in their 20th year.

A major concern voiced by Dr. Roes is that not only are doctors leaving Washington for more financially rewarding areas, but since doctors working in rural areas generally earn less than those in urban and suburban settings, whether there will always be family practice physicians willing to commit to serving rural areas such as our Key Peninsula.

Boy Scout Troop 220 Rummage Sale & Car Wash

At Lake Kathryn
Village
Saturday & Sunday
May 25th & 26th
9:00 AM to 3:00 PM

Donations Welcomed
Call 884-3133 or
460-7884

Come join us at... Congregation Beth El



We are a Messianic congregation - a fellowship of believers who recognize Yeshua (Jesus) as the Messiah. We are committed to restoring the Hebrew roots of our faith in the God of Abraham, Isaac, and Jacob.

Sabbath (Saturday) Services:
10am - Sabbath School
11:15am - Worship Service

We meet at:
Port Orchard Church of the Nazarene
4647 Sidney Rd. SW

For driving instructions, or other information such as Davidic Dance Classes and Bible Studies we offer during the week, visit us online at:
www.congregationbethel.org

CLASSIFIED ADS

WATKINS PRODUCTS are available, call Marvin and Myrtle Keizur at 884-3566. VISA/MC.

SPECIAL NOTICE!!

FOOD WORKER CARD CLASS
PLACE: KPCC
DATE: Saturday, May 18th
TIME: 9:00 - 11:00 AM
Limited to 80 People
To Sign Up, Call KPCC Office at
884-3456 or Sign-Up at the Open
House on May 11th.

NEED GROCERIES?

No time to shop? For a small fee I'll do the shopping or run errands for you.
Call Gloria at 884-3342

BAYSHORE GARDEN CLUB
PLANT SALE
SATURDAY - MAY 4TH
9 AM TO 4 PM
MANY VARIETIES
TO CHOOSE FROM
CHARBONEAU'S
CONSTRUCTION YARD
11612 SR 302

S.A.V.E. Thrift Store

GREAT NEW
MERCHANDISE
All clothes and shoes
Proceeds go toward academic and
vocational scholarships for PHS
students
DONATIONS ACCEPTED
OPEN: M-Tu-Th-F
10:00 AM - 4:00 PM
Sat. 10:00 AM - 4:00 PM
CLOSED: Sun. & Wed.
(Below Peninsula High School)
(253) 857-2800

SLS Designs Unlimited
Plans drawn for your remodel
or new construction needs.
Call Sheri Simpson
884-2977

Home Feed & Grocery
Mon.-Fri. 8:00 AM-10:00 PM
Sat. 9:00 AM-10:00 PM
Sun. 9:00 AM-9:00 PM
Holidays 10:00 AM-6:00 PM
Corner 4th & KPN, Lakebay
884-2321

Classified Ad Rates:
\$5.50 for 10 words
\$.30 for each additional word

KEY PENINSULA BAPTIST
CHURCH. Meeting Sunday mornings
at Key Peninsula Civic Center in
Vaughn. Bible Study 9:30 AM, Worship
Service 11:00 AM, Wednesday
AWANAS 6:45 PM. Pastor James
Rouse - Phone 884-9994.

HELP WANTED
HANDYMAN - Part Time
Painting, Cleaning, Help with Carpen-
ter Work, Yard Work, etc. \$8.00 an
hour. 884-3600

COUNSELING OFFICE OF
Lori Ann Brudvik Lindner, M.A.
Individuals/Couples
Eating Disorders
Key Pen Health Cntr & Tacoma
Sliding Scale
756-5060

APPLEBY PLUMBING & DRAIN
Service, Repairs, and Remodels, Hot
Water Tanks.
(253) 884-9827.

Camp Seymour Provides Merit Scholarships To Local Elementary School Students

This summer YMCA Camp Seymour, in collaboration with four Key Peninsula schools, will provide one-week resident camp experiences to local students through an innovative Merit Scholarship Program. A total of eight students, two each from Minter Creek Elementary, Evergreen Elementary, Vaughn Elementary, and Key Peninsula Middle School will be selected by school staff to attend a one-week summer session at Camp Seymour.

The scholarships will be awarded by each school on the basis of student merit in academic performance, potential for personal growth, personal characteristics, relationships with peers, willingness to try new experiences, financial need, or other category as determined by the school. Support for the scholarships comes from the YMCA's annual Partners for Youth campaign.

Vaughn School News

Book Fair: The book fair is taking place in the library and will continue until May 6th. It is open before and after school and students may come during their library times during school. It will also be open during the carnival on May 3rd.

PAA Youth Little Slugger T-ball: Registrations for boys and girls are available at all Peninsula schools and at the PAA office at 7108 Pioneer Way, Gig Harbor. Children who are 5 years old by May 1st or in Kindergarten are eligible to play. For more information call the PAA Hotline at 858-7678.

Annual Carnival: May 3rd, with lots of fun and activities for all !!

Normanna Male Chorus Returns

The Normanna Male Chorus will perform again at the Key Peninsula Lutheran Church on Monday, May 6th at 7:30 P.M. They will present a variety of songs under the direction of Dr. Jon Malmin. This is their fourth annual appearance here. The group of over fifty members is now in its 11th year and is much in demand.

The concert is free and is open to the community. Invite your friends, neighbors and family to join you for this outstanding evening of songs.

The KP Lutheran Church is located at KP Highway and Lackey Road. For further information, call 884-3312 or Jack Piercy at 884-4907.

Quote Of The Month

"To exist as a nation, to prosper as a state, and to live as a people, we must have trees."

Theodore Roosevelt,
26th President, 1901-1909

[For more examples of this interesting President's thoughts, visit the Karpeles Manuscript Museum, 407 South G Street, Tacoma. Through June 25th they will be displaying some of his correspondence to various people as well as his public statements. Admission is free. Call 253-383-2575 for more information.]

We'll Take Care of You!

For fevers, flu's and fractures, we have what you need.

- Prescriptions and over-the-counter medications
- Wheelchairs, crutches, walkers and canes
- First-aid supplies

Plus a full range of healthcare products and adaptive equipment.



Olympic Pharmacy
HEALTHCARE SERVICES

Most insurance plans and major credit cards accepted.
4700 Ft. Fossick Dr. NW
Gig Harbor, WA 98335
(253)858-9941