



National Nut Day
Oct. 22

Non-Profit Organization
U.S. Postage
PAID
Wauna, WA
98395
Permit No. 2
BOX HOLDER

INSIDE&ONLINE
OCTOBER 2014
Online

Stroke victim Robbie Jackson

- 'Addams Family' at Paradise
- Asteroids make fly-bys of Earth
- Fire District 16 fire reports

Become a fan on Facebook
Follow us on Twitter
keypennews.com

New computers help Evergreen students learn

By Scott Turner, KP News

The kids at Evergreen Elementary School have discovered a great new tool for doing research and writing stories, thanks to third-grade teacher Therese Souers.

It's called Chromebook, a small tablet-like, Google-based computer that let them access the web, do extra math projects and other school assignments.

Both Souers and Evergreen Principal Hugh Maxwell have strong backgrounds in technology and Souers is on the technology committee for the school district, so she's "very much involved in the technology stuff that's going on," she said.

She first heard about Chromebooks at a technology conference she and Maxwell attended last year.



Photo by Scott Turner, KP News

Evergreen Elementary School student Makayla Carr, right, helps classmate Samantha Rodrigues navigate her Chromebook during class recently.

(See Computers, Page 2)

KP Farm Tour set for family fun and education

By Karen Lovett, KP News

This year's KP Farm Tour begins with breakfast at the Key Center fire station. On Oct. 4, pancakes and ham, juice and coffee will be served between 8 a.m. and noon. During that time firefighters will be racing to doff and don firefighting gear. A simulated fire and rescue from a two-story house fire will take place at 11 a.m.

Breakfast is free, but donations are being accepted to cover the cost of a high lift jack.

"The jack is needed for rescuing people trapped in cars. It's used to get the door off," Assistant Chief Hal Wolverton said.

This year the KP Farm Tour is dedicated to its former president, Bill Ketts. Ketts wanted to promote the atmosphere of our tranquil community. Ketts was diagnosed with secondary acute myeloid leukemia in April, and died June 7. It was his desire that his wife Tracy keep their Blue Willow Lavender Farm going and participate in the Farm Tour.

"Thank you to the community for their love, gifts and help on the farm," Tracy Ketts said. "People were so giving of their time. Plants are healthy. We lost some in March due to 14 inches of rain. Our grower came out and helped 10 days after Bill was diagnosed.

I couldn't have done it without help and friends."

Events at Blue Willow Lavender Farm will include lavender de-budding demonstrations, lavender hand therapy, kids' rock painting, a pumpkin wall of carved foam pumpkins, a tour of the farm and a vote for your favorite lavender scent. The Blue Grass Minstrels will be playing between 11 a.m. and 12:30 p.m.

Gateway Park is participating as the information center for the second time since joining the tour last year. The Key Peninsula Historical Society and KP Veterans will be at Gateway Park as well as Master Gardeners and the representatives of the Community Garden to answer gardening questions.

Bea's Flowers will have lots of flowers, and fall vegetables will be for sale including squash, pumpkins and gourds. A number of rabbits have the run of the place and chickens, ducks, and geese are always present.

Packleader Farm promises a continuous flow of simultaneous events that will keep spectators enthralled as a variety of dog breeds show off their prowess herding different breeds of sheep or ducks in the multiple arenas.

(See Farm Tour, Page 4)

Inside
A sweet marketing idea -- Page 24

News
News 1-5, 8-10

Sections
Op-Ed Views 6-7
Community 11, 14-21
Community Pages 12-13
Out & About 24

(From **Computers**, Page 1)

"One of the workshops was about a school that was doing STEM — science, technology, engineering and math — and the integration of their technology with all of that. And both Hugh and I got very excited about it and wanted to find a way to get that for our students," Souers said.

It took several months of researching and writing grants, but Souers has been able to come up with enough funding from various sources to purchase more than 70 new computers for students in the school district.

And now Evergreen is starting to use the Chromebooks in a new school program they call Chromeworks — a combination of Chromebook and homework.

"It started as a way to get student who struggle involved in getting their homework done, in getting more reading and writing done and trying to figure out a

way that would engage them," Souers explained.

"We've had an after school program for fourth- and fifth-graders, but it really was just giving them more of what they weren't successful with during the day," she said.

Part of the problem is that "a lot of our kids don't have access to computers at home for anything but video games."

One of Souers' former jobs was director of development for a community college so she knows how to write grants.

With a \$5,000 grant she got for Evergreen from CenturyLink, the school was able to purchase a charging cart with 12 Chromebooks. Then she got a \$6,500 grant from a foundation that paid for more computers.

"We also had some left-over LAP money (Learning Assistance Program) and now we have more than 70 computers. They'll serve all grades but we're sharing them," she said.

In addition to helping the kids learn computer skills, they're also learning about responsibility, Maxwell said.

"Responsibility is a big piece. There are always kids who can find their way around it but they're taught that this is a privilege and if you violate the rules you'll lose it," Souers said.

According to Souers, one surprise benefit of the new computers is that kids who might not excel in their regular subjects are sometimes very quick to pick up computer skills, which they can then teach to the other kids.

"Maybe reading and writing isn't really their thing but they know how to change the font size or insert a picture," Souers said. "They figure those things out and suddenly their status in the class and their self esteem just rises because they become the expert and people want to be expert in technology."

Kids and teachers alike seem to love the new computers.

"I think the Chromebooks are awesome," said Makayla Carr, 8. "We have enough for our class so we can all have our own personal Chromebook and the cool thing is you can go on the web and search for what you like to do."

Carr said if other kids don't know how to use them, the classmates who have experience will help them.

Makayla's classmate, Delmer Emans, also 8, likes Chromebooks. "I can type stories on them and sometimes that's important. At first it was kind of hard but now it's really easy and it helps me. I can do extra math and search for things on it," Emans said.

For Souers and Maxwell, the bottom line is helping the kids.

"Our kids are underprivileged," Souers said. "They don't have the same privileges as a lot of the Harbor kids. We don't want them to fall behind just because they didn't have that access. We want to help our kids."

www.greychevrolet.com

GM TRANSMISSIONS.....Now At Grey Chevrolet

- Remanufactured transmissions are built specifically for each GM vehicle
- **3-year/100,000-mile nationwide limited warranty* (parts & labor)**
- OE quality that incorporates all the latest engineering updates
- Plug-n-Play design for low hoist time
- Typically available the same or next day
- Toll-free Powertrain Contact Center: 866-453-4123

Genuine Parts

GREY CHEVROLET 360-876-8091

4949 HOWDE ROAD, PORT ORCHARD, WA, 98367 parts@greychevrolet.com



Installation Available

www.greychevrolet.com

www.greychevrolet.com

To subscribe, please write, call or fax:

Key Peninsula News
17010 S. Vaughn Road
P.O. Box 3, Vaughn, WA 98394
Phone: (253) 884-4699
Fax: (253) 884-4053
Email: news@keypennews.com

KEY PENINSULA NEWS

www.keypennews.com

Unsolicited submissions deadline including press releases: 15th of each month prior to publication

Executive editor: Scott Turner
Ad sales: Brett Higgins, Wendy Kleven
Bookkeeper: Heather Christian
Community pages editor: Connie Renz
Production: Christina Hallock, Paige Nader
Webmaster: Brett Higgins
Staff and contributors: Lee Christensen, Ed Johnson, Alice Kinerk, Karen Lovett, Hugh McMillan, Colleen Slater,

Frank Slater, Rick Sorrels, Jessica Takehara, Rodika Tollefson, Irene Torres, Steve Whitford, Dan Whitmarsh.
Distribution: Vic Renz, Connie Renz, Phil Bauer, Frank Slater, Bill Dietz, Kevin Reed
Guest columnists: Monica Rakowski and Bill Trandum

Photo of Mount Rainier in the masthead was taken from the dock in Longbranch by Thomas Morgan, a KP News reader and Key Peninsula resident.

Key Peninsula News is published monthly by the Key Peninsula News publishing board in Vaughn, Washington. The Key Peninsula Civic center Association is the non-profit parent organization. Copyright 2014 with all rights reserved. Reproduction of editorial or graphic contents in any manner without permission is prohibited. Annual subscriptions (12 issues) are available for \$30.00 and are mailed first class. Copies are mailed presort standard to residents and post office box holders of the Key Peninsula. Single copies are available at the newspaper office in the basement of the Civic Center annex and at various distribution points located on the Key Peninsula. Approximately 19,000 people live in the distribution area.

STATEMENT OF OWNERSHIP, AND OPERATION OF THE KEY PENINSULA NEWS
1. THE KEY PENINSULA NEWS is a community newspaper, owned and published by the KEY PENINSULA CIVIC CENTER ASSOCIATION, a nonprofit, 501-C3 corporation with main offices in Vaughn, Washington. The name, goodwill and any copyright assets that may exist pertaining to the NEWS are among the financial assets of the KEY PENINSULA CIVIC CENTER ASSOCIATION.
2. The objective of Key Peninsula News is to support and create community by reporting news and features and providing a forum for local information. News and editorial coverage focuses on the Key Peninsula and immediately adjacent areas within Fire District 16.

OUR GRATEFUL THANKS TO ALL WHO CONTRIBUTE TO THE KEY PENINSULA NEWS!
The opinions expressed herein are the opinions of the writers and do not necessarily reflect the views of the publishers or staff. All letters to the editor must be signed and include a daytime phone number for verification. No anonymous letters will be published. Submissions are used on a space available basis and may be edited if used. THE KEY PENINSULA NEWS reserves the right to edit all submissions for length and content. Mail letters to: P.O. Box 3, Vaughn, WA 98394, or e-mail to news@keypennews.com.



OCTOBER 2014

Key Pen Parks PROGRAM GUIDE

REGISTER ONLINE: www.keypenparks.com

HARVEST PARTY!

October 18, 2014 @ Volunteer Park 6PM to 8PM Rain or Shine!

Bring the whole family and enjoy our Carved Pumpkin Contest, Costume Contest, Haunted Hayride, Live DJ and much more!

Don't forget to bring your already-carved pumpkin, your own cameras for our Photo Booth and flashlights for the Ghoulish Goodies Flashlight Hunt!

*THIS IS A FREE EVENT! Please consider bringing canned goods for donation to our local food bank, Thank You.

More info @ www.keypenparks.com

Gateway Park Public Planning Workshop

October 9, 2014 @ 6:30PM

Minter Creek Elementary School

For more information or to be notified of future workshops email scottg@keypenparks.com

Park Board Meeting

Monday, October 13, 7:30PM

(regular meeting & 2015 budget hearing)

Upcoming events

KP Farm Tour Information Site—Gateway Park

October 4, 10AM to 4PM

For more info @ www.kpfarmtour.com

Breakfast with Santa

We know it's early, but Christmas is right around the corner...

Come have **Breakfast with Santa, December 6 @ KP Fire Station! 9am-11am**



Volunteer Park Concession Stand RFP



Key Pen Parks is requesting proposals for the furnishings of all staff and equipment necessary to provide food concessions at

Volunteer Park. For more information, email

scottg@keypenparks.com

(From **Farm Tour**, Page 1)

“Different breeds of dogs have different styles,” Packleader owner and trainer Steve Weigley said. Old English sheepdogs and briards will be among some of the more familiar breeds on hand.

Cape-E Farm and Vineyard will be offering snacks for sale as well as providing a picnic area for anyone to enjoy their lunch at the peaceful farm setting.

Fresh produce will be on sale and numerous farm animals can be seen. Local artists will be selling their work. The dry bean sheller will be available again this year for those who want to take a turn at shelling legumes.

Trillium Creek Winery offers wine tasting and tours of the vineyard.

Key Peninsula Community Services has been added this year and will be dishing up soup featuring fresh vegetables for \$5 between 11 a.m. and 2 p.m. Public bathrooms will be open during that time and anyone can tour the facility that houses the Senior Center and Food Bank.

Lakebay Marina is another new addition to the Farm Tour this year. The marina is located at the site of the first farm co-op. Food was collected here and sent by boat



Tractors line part of the Creston Valley Farm before the tour opened last year. The CVF is owned by Greg and Lalaine Wong and is the tour headquarters featuring many vendors, demonstrations, food and music.

to Tacoma. Get acquainted with Puget Sound Wildlife under the direction of Harbor WildWatch. Minter Creek Oyster

Company is also partnered with Lakebay Marina and expert shuckers will be demonstrating the quick easy method of shell-

ing oysters as well as talking about the life cycle and growth of the bivalves. Plenty of food is available, and the 302 band will play at 5 p.m.

The Longbranch Improvement Club will be serving soup and Peg Bingham's famous hot apple crisp during the Fiber Arts Show.

“The theme for the show this year is, The Gamut of Fiber Arts from Historic to Modern Techniques, Artistic to Utilitarian,” Carolyn Wiley, Farm Tour president, said.

Creston Valley Farm is the event center. The Down Home Band will start playing at 1 p.m. followed by the Rusty Roots at 2 p.m.

Local artist P. Arnold Thompson will be displaying his multi-media abstract creations. For horse enthusiasts, Farm Tour vice president and equine expert Chuck Kraft will be there all day answering questions using a horse to demonstrate specific training solutions.

“It's not about sitting on a horse, it's about riding on a horse,” Kraft said. “The Farm Tour is increasing each year. It's good for the community. People like to communicate with farmers.”

For information, contact Carolyn Wiley at (253) 884-9157 or wiley@mac.com.

File photo, by Danna Webster, KP News

Re-elect Jan Angel as Your State Senator

Working for a Stronger Community



“It was my honor to help obtain free flu vaccine for our citizens on the Peninsula last winter.”
— Jan Angel

- ✓ Worked to provide affordable vaccines to Key Peninsula communities
- ✓ Saved local businesses from displacement due to local highway improvements
- ✓ Member of the Key Peninsula Business Association-working for and supporting local small businesses

Re-elect **Jan Angel** (R)

STATE SENATE

Paid for by Jan Angel for State Senate
5184 Granada Place SE, Port Orchard, WA 98367
360-689-6432 • info@janangel.com

www.janangel.com

Exhibits Demonstrations Vendors

7th Annual
Fiber Arts
Threads through Time
Artistic to Utilitarian
Traditional to Modern

Free Admission
Saturday October 4
10am to 4pm

Longbranch Improvement Club
4312 Key Peninsula Hwy S.
call 253 884 9157

October 4 10 am to 4 pm
FIBER ARTS FESTIVAL
Free admission

Exhibits, demonstrations and vendors of artistic to utilitarian, traditional to modern fiber arts. Seventh annual fiber extravaganza with local art and artists for whole-family free fun.

November 7 5 to 10 pm
SPAGHETTI SOCIAL
All you can eat \$10

Dig into housemade spaghetti, salad, garlic bread and unlimited chat with friends and neighbors. Or get it to go!

JOIN YOUR FRIENDS AT LIC
Wednesday Oct. 15

Potluck dinner, 6:30 pm.

At the LIC you're joining people who like to make things better — for you, me and everyone else. Local family membership is \$40/year, \$25/singles/nonlocals. Join in October and the rest of 2014 is free. Nov. 19 meeting features Dr. Carolyn Swope on the LIC Clubhouse History.

Longbranch Improvement Club

BETTERING THE COMMUNITY SINCE 1921

253 884-6022 Clubhouse www.licweb.org
LIC Clubhouse 4312 Key Pen Hwy S, 5 miles south of Home

Guy Allen, familiar face, new fire chief

By Steve Whitford, KP News

It's official; as of Aug. 27, Guy Allen, former interim chief became the new fire chief of the Key Peninsula Peninsula Fire Department.

Allen was one of 22 applicants for the position, and after a three way tie for the top candidate, the Pierce County Fire District 16 Board of Fire Commissioners chose Allen because of his qualifications and because he was an in-house candidate.

Allen was born in Gardner, Kansas but did most of his growing up in Washington state. He graduated from Blaine High School in 1981, but even then he was learning his chosen profession by being a volunteer firefighter his senior year.

In 1982 he was hired by the Blaine Fire District for equipment maintenance. He attended the Washington State Fire Academy in 1983 and in 1989 was promoted to training captain.

In 1994 he advanced to operations captain, and in May of 1999 Allen moved to the Key Peninsula and was hired as the C-shift lieutenant.

In 2005 he served as temporary division chief, a position that became permanent in 2006. By 2012 he was promoted to assistant chief, and in 2014 he served as interim chief until this permanent appointment in August.

Allen is 51 years old and is eligible for retirement at age 53.

"As long as I am physically able to contribute and make a difference, I would like to continue for perhaps another 10 years," he said.

The chief has financial concerns for the future of the department.

"There are two critical measures coming up in 2016. The maintenance and prevention levies have eight to 10 firefighters' jobs depending on passage. There's also an EMS levy coming up again in 2020 and a no vote could cost us half our employees," Allen said.

Chief Allen's career really depends on what the future brings.

"There's a personal limit as to how much human tragedy a person can stand to witness. I haven't reached my limit yet, but someday I know I will," he said.

Allen has seen a lot of things during his time as a firefighter.

"The scariest thing I've done was respond to a house fire with people trapped inside, and I was all by myself. The funniest thing I've responded to was an escaped monkey who entered a stranger's house, bit him and then ransacked the bedroom.

"My proudest memory is of the day I was picked to be Chief," he said with a smile.

Chief Allen posts regularly on the district's "Key Peninsula Fire" Facebook page.

Candidate forum slated for Oct. 7 at Civic Center

Candidates running for elective office in November will face off, argue their position, and answer questions from the voters on Tuesday, Oct. 7, at the Key Peninsula Civic Center in Vaughn from 7 to 9 p.m.

The following 10 candidates are scheduled to sit on the panel:

Derek Kilmer (incumbent) and Marty McClendon are competing for a seat in the U.S. House of Representatives.

Jan Angel (incumbent) and Judy Arbogast, for State Senate.

Jesse Young (incumbent) and Nathan Schlicher, for State Representative.

Larry Seaquist (incumbent) and Michelle Caldier, for State Representative.

Stan Flemming (incumbent) and Derek Young, for Pierce County Council.

Chuck West will moderate the event, which will start with the candidates briefly presenting their position, followed by questions selected from written submissions from the audience, followed by verbal questions from the audience.

Candidates and audience members can remain after for one-on-one discussion.

The candidate forum is jointly presented by the Key Peninsula Community Council, the Key Peninsula Civic Center, The Key Peninsula Business Association, and the Key Peninsula News.

Power to the People

Bruce Macdonald, Key Peninsula Civic Center Association, Treasurer
Macdonald has been a board member at the Key Peninsula Civic Center Association since the early 1990's and was president from 2009-2012.

Guess what? You don't have to declare a party affiliation, you don't have to invest in yard signs and you don't have to make phone calls to your neighbors during dinner time. You just need to be a resident of the Key Peninsula or work on the Key Peninsula or own property on the Key Peninsula and also have the (wish, desire, courage) to help (improve, enrich, enhance) life here on the Key.

Yes, it is board election time for the Civic Center and we could use your experience, your considerations and your talents. And, we're only talking about one or two evenings a month to help the Board and the Civic Center best serve our community and the residents.

It is totally acceptable to nominate yourself... in fact, encouraged... give our office a call and let Holly (884-3456) know. She will be really impressed with your initiative and grateful for your help... as will we all.

Boards work best when there is a healthy diversity of thought and opinion, talents and experience. Say, you enjoy special knowledge and experience with financial matters; we could use

CIVIC CENTER

CORNER

your help. If you swing a strong hammer or turn a spade, we could use your help. If you enjoy working with and instructing kids, we could use your help. Are you a great cook or baker? We have a commercial kitchen and use it ourselves sometimes. Do you know and understand Robert's Rules of Order? We could use your help. Licensed Ham radio operator? We now have a ham station at the Center. Are you an attorney, practicing or not, we could use your help and advice.

Maybe it is just that you want to be of help and to contribute. It all works and it is all greatly appreciated; many hands make light work. We do what we can and our lives are better for it.

"A small group of thoughtful people could change the world. Indeed, it's the only thing that ever has." - Margaret Mead

The KP Civic Center Board elections will take place on November 13, 2014 during the regular KPCCA Board meeting, which begins at 7pm in the Whitmore Room. The two year board term begins in January 2015.



www.kpciviccenter.org
kpciviccenter@centurytel.net
253-884-3456

The Key Peninsula Civic Center is a 501(c)3, private non-profit. We rely on rentals, fundraisers, and donations to keep our doors open, and our rentals affordable for the community. Thank you for your support!

Halloween Carnival

October 31st

6pm-8pm FREE

Candy!

Carnival games, Costume & Carved Pumpkin Contests, Bounce House, and more!

Prizes for kids of all ages

www.kpciviccenter.org • 253-884-3456



Peninsula Views

Read my lips

Some folks read palms, others read cards. Local author Jilly Eddy reads your lips — or to be exact — a lipstick print of them.

Eddy was Jersey born, but grew up in Orange County, Calif. She later moved to Bellingham, Wash., but had ties to friends on the peninsula and had visited it often. About two years ago, she moved to the Key along with her partner of 27 years, Marsha Kremen.

As a child Eddy was fascinated with lips. She received the nickname Jilly from her grandmother and others, and she's used it ever since.

In 1980 Eddy purchased a book of celebrity lip prints and liked it so much she began taking and sharing prints with her relations and friends. During the next 14 years she collected and examined the lip prints. She even ran a limousine service named Lips Limo, and all the passengers paid with money and lip prints. She said she was proud of getting Johnny Cash and June Carter's prints. "Johnny wouldn't wear the lipstick, so the only way he would cooperate was to get lipstick on him by kissing a girl," Eddy said.

Eddy analyzed lips and later interviewed the subjects to see how accurate her lip readings were.

After more than 10,000 prints were analyzed Eddy turned her art into a science. Since 1990 Eddy has been enlight-

Steven Whitford
Words of Whit



ening and entertaining audiences with her readings.

Basically what she does is pass out cards for taking lip prints. Those who choose to participate "smooch" the paper with lipsticked lips, then sign and date the sample. Eddy then collects and reads their lips and is capable of telling participants some of the things about themselves that are presently pertinent and specific to them.

Occasionally, Eddy will do a complete reading of a subject, but that can take more than one hour. Eddy coined the term Lipsology in 1996, and has made presentations to many organizations including the International Behavioral and Medical Biometrics Society. She said her clients include Microsoft, Nordstrom, Neiman Marcus and even the United States Navy.

In 1994, Eddy published her how to book, "Lipsology" an anthology of her work and studies.

"Lipsology is an art and science, and can be taught to almost anyone," she said.

Eddy's goal throughout her book

(See Whitford, Page 8)

Letters Policy

The opinions expressed herein are the opinions of the writers and do not necessarily reflect the views of the publishers or staff. All letters to the editor must be signed and include a daytime phone number for verification. No anonymous letters will be published. Submissions are used on a space available basis and may be edited if used. The Ken Peninsula News reserves the right to edit all submissions for length and content. Mail letters to: P.O. Box 3, Vaughn, WA 98394, or email to news@keypennews.com.

Let's have a discussion about domestic violence

Jesus once said, "All that is secret will eventually be brought into the open."

Domestic violence is often hidden beneath the veneer of polite society. We mask it, denying the abuse, the pain and the suffering.

Abusers and abused go about their day as if all was well, and nobody notices the signs of struggle that are there.

This last month, a series of high-profile athletes were accused of domestic violence. Suddenly everybody is talking about it. This is good. It's time we brought it out into the open, educated ourselves and learned how to deal with it.

A recent survey by the Center for Disease Control found that one in three women and one in four men had "experienced rape, physical violence and/or stalking by an intimate partner in their lifetime." It also found that one in four women and one in seven men had been "hit with a fist or something hard, beaten, slammed against something" by an intimate partner.

Domestic violence takes many forms. It can be physical, verbal, emotional, financial or sexual. Domestic violence is most often employed by men against women or adults against children, but many men are victims of abusive behavior as well.

All have one thing in common: using force to gain and maintain control over another person. Domestic violence is a way of stealing power from others, intimidating them through pain, threats and confusion until they submit to the will of the abuser.

Domestic violence is always wrong. Abuse is always wrong. There is no excuse, and we must not accept it in our midst.

October is Domestic Violence Aware-

Dan Whitmarsh
Writing by Faith



ness Month. It's an issue that is with us year-round, but this month has been set aside to draw extra attention to the reality of this hidden epidemic.

This is a time to mourn and lament with those who suffer, often silently. It's a time to reach out to those who are victims and survivors, offering a kind word and a helping hand. It's a time to stop making excuses and justifying the behavior of violent men and women.

It's also a good time to learn more about domestic violence, by reading and studying and watching online tutorials. One great resource is the National Coalition Against Domestic Violence (ncadv.org). I'd encourage you to take some time educating yourself, so we're all better equipped to deal with this issue.

There are people reading this who are victims of abuse; there are abusers reading this as well. Get help. Talk to a friend, a pastor, a counselor, a police officer. There's no shame in asking for help. But realize this: it won't change until steps are taken to deal with it.

It begins with bringing it into the open, and recognizing it in our midst. Whether it's you, or a friend, please take some time this month to learn more about domestic violence. Let's bring this hidden pain out into the open and take away its power, restoring people into the fullness of life which we all deserve.

Dan Whitmarsh is pastor at Lakebay Community Church. You can contact him at dan@lakebaycovenant.net.

McNeil Island, McCleary, and an impending tax avalanche

Washington state is in violation of a reversionary clause in the 1984 deed that transferred McNeil Island from federal ownership to state ownership.

The deed required that the property be "maintained as a correctional facility in perpetuity" with ownership reverting back to the United States if violated.

Washington closed its McNeil Island prison in 2011, leaving the State Civil Commitment (SCC) facility on the island. The problem is that the SCC is not a "correctional facility" (a prison), it instead houses persons who have already served their full criminal sentence, but are still held under "civil" statutory provisions indefinitely because they are a "threat to society," similar to being terminally insane.

At a recent meeting, the spokesperson for the General Services Administration (the agency that "owns" all federal property), said that the Feds have no current intention of reclaiming McNeil Island, but he also later admitted that he was not privy

Rick Sorrels
The Pragmatic Sophist



to discussions by higher ups.

Due to budgetary problems, the state has not funded a study of alternative "public uses" which might allow an amendment of the deed restriction.

An alternative use presented here might be to use the island as a "retreat" for legislators where they could be sequestered every two years to negotiate the state's biennial budget. They could use the comfortable living accommodations left behind, the existing kitchen staff for the SCC, and the security staff (guards) who would prevent the pesky reporters and constituents from interfering with their important work. The governor might even step in and suspend ferry service for the duration to further eliminate interference.

Seriously, though, a tax avalanche is im-

pending. With the McCleary decision, the Legislature is under order by the Washington Supreme Court to "fix" their failure to perform their primary function of adequately funding public schools. The Supreme Court is upset with the Legislature's failure to act, and is considering draconian contempt measures.

The Washington Supreme Court recently ruled that persons who emergency room doctors determined are a threat to themselves or others can no longer be warehoused on an emergency room gurney without treatment or medication waiting indefinitely for bed space that is not available at a mental health facility.

And claimants continue to win huge damage awards from juries (the jury lottery) for DSHS's failure to prevent abuse by caregivers and foster homes, with the budget cuts they must already manage under.

Fixing McCleary, alone, will take billions of dollars, plus more for annual maintenance. All this additional funding cannot come from thin air, and it cannot be taken from courts, police, prisons, or anything

else — the shortage is far too big. The only other source is the taxpayers' pocket.

The legislators hope the economy will recover to solve their problems, but the economy is refusing, and the numbers are so far too big. Partisan politics make matters worse.

"Sequestering" the legislators is an interesting thought, but only a pipe dream.

We do indeed live in the proverbial interesting times.

You're Invited as the Flavors of Fall Gala Celebrates "25" years

An Evening in Paris

Key Peninsula Civic Center
17010 S Vaughn Rd KP N
Vaughn, WA 98594

Saturday, October 11, 2014
Doors Open 5:00 PM
with a champagne greeting

Additional support from:
Peninsula Light Co.
Rotary of Gig Harbor

Tickets are available at:
Sunnycrest Nursery,
Key Peninsula Civic Center,
and kpciviccenter.org

Taylor Shellfish Farms
Platinum Sponsor

kpciviccenter@centurytel.net • 253-884-3456 • Facebook

Re-Elect OUR COUNCILMEMBER STAN FLEMMING

Stan with Cindy Scott, owner of Lakebay Marina

Pierce County Council District 7
FLEMMING
Pierce County Councilmember

Our councilmember Stan Flemming works for jobs and supports small businesses for a vibrant community.

- ✓ Successfully secured transportation funding for our most vulnerable of citizens
- ✓ Working with Pierce County Councilmember Rick Talbert (D) on the Shoreline Master plan to protect our shorelines
- ✓ Increased funding for road projects in Key Peninsula

www.electstanflemming.com

Paid for by Friends of Stan Flemming (R)

Key Pen Parks to host a series of public meetings

Key Pen Parks recently announced the first of a series of public meetings on the development of a master plan for Gateway Park.

According to Scott Gallacher, the executive director, the purpose the master plan is to gather the community's input on improvements at Gateway Park.

Key Pen Parks has contracted with Robert Droll, a landscape architect firm specializing in park design.

Gallacher said Droll will develop drawings, cost estimates, a development plan and other recommendations, incorporating the public comments and Key Pen Park's planning needs for the park.

The first public meeting will be on Thursday Oct. 9, from 6:30 p.m. to 8 p.m. at Minter Creek Elementary School located at 12617 – 118th Avenue NW.

In a recent new release, Gallacher also said that Key Pen Parks will hold two public meetings to discuss their 2014 budget.

The first meeting will be Monday Oct.

13, and the second will be Nov.10. The meetings will take place at Volunteer Park annex beginning at 7:30 p.m.

For information, contact 884-9240 or email scottg@keypenparks.com.

(From Whitford, Page 6)

and teaching seminars is to spread the knowledge.

Is what she does a real science, mysticism or the power of suggestion? Perhaps a bit of all three, or maybe it's just another way some people can channel their inner powers of perception allowing them to be able to read people.

Her book is available at Sunnycrest Nursery, Blend Coffee, Purdy Costless and Mostly Books in Gig Harbor. Read it and then decide for yourself. The truth is out there.

For information, visit lipsology.com.

Land Use Advisory Commission works on public's behalf

By Sara Thompson, KP News

The Key Peninsula Land Use Advisory Commission (LUAC) plays a critical role in development taking place on the almost-island in South Puget Sound.

Those with an interest in knowing more and having a voice might consider joining. There are currently two vacancies.

LUAC meets monthly and until recently the group has reviewed all permits for building and shoreline use on the Key Peninsula.

In March 2014 a two-year pilot program began; routine permits are reviewed and approved by county staff allowing the LUAC to focus on applications for more comprehensive projects. During this period the membership expanded from nine to 12 members, with four appointments to be made from the Key Peninsula Community Council (KPC).

Meetings are held monthly at 6:30 p.m. on the third Wednesday of each month in the Key Center Library. They are open to the public.

Chuck West is serving his second term, all others are serving first terms. Reappointment is not automatic. Those with terms ending in March 2016 are members of the KPC and terms end when the pilot program is over. Current members:

- Chuck West, Chair (10/2014)
- Tara Froode, Vice-chair (10/2015)
- Audra Garcia (3/2016)
- Domoni Glass (10/2016)
- Marcia Harris (3/2016)
- Dwight Hartman (10/2014)
- Mark Nelson (10/2017)
- Don Swensen (10/2016)
- Dan Scott (10/2015)
- Cindy Worden (3/2016)

Applications are available online at co.pierce.wa.us/DocumentCenter/View/4566 for those interested in serving as citizens at large. Once received, the application is reviewed for recommendation by the Pierce County Executive and presented for approval to the Pierce County Council. Terms are for four years and members can serve up to two terms.

"We will beat any competitor's prescription price."

Purdy

COST LESS

Prescriptions

Come in for all of your Halloween Tricks & Treats!

253 857 7797


Flu shots \$14.95

100% covered by most insurance plans.

14218 92nd Ave. NW, Gig Harbor, WA 98329
Store hours: M-F 9-8, Sat 9-7, Sun 9-6. Pharmacy hours: M-F 9-7, Sat 9-6, closed on Sundays

Key Peninsula Community Services
Senior Center & Food Bank
Helping our citizens to eat and live healthy
PO Box 392 Lakebay WA. 98349 253-884-4440 Fax: 253-884-6196
Located at : 17015 9Th St Ct KPN Lakebay, WA. 98349

JOIN Tai Chi



In mid October our annual Pledge Letter will be going out to all on the Key Peninsula.

Make a Donation

Please take a minute to read it and give if you are able.

You are our greatest resource.

What Will You Learn?

- Balance skills
- Good body alignment
- Coordinated movements in a circular and flowing motion

 Who Should Attend?

- Age: 55 years and older who are:
- Able to walk (canes and walkers are okay)
- Interested in improving balance, flexibility, and strength

 No Fee to Join - Free Class
 Class begins
 Sept. 29th, 2014 9:15 - 10:15am
 Call us for more details

www.keypeninsulacommunityservices.org and www.facebook.com/KeyPenCS

'National Make a Difference Day' happens this month

KP News staff report

On Oct. 25, millions of Americans across the nation will come together in a common mission to improve their communities.

On this day, the Gig Harbor and Key Peninsula community will come together too, for the second annual "GHKP Make A Difference Day" (MDD) celebration of its own.

The Greater Gig Harbor Foundation will host the second annual celebration event in collaboration with the City of Gig Harbor and Joint Base Lewis-McChord's BOSS program volunteers at PenMet Parks Schmel Homestead Park.

The Greater Gig Harbor Foundation, working together with leaders from organizations like the Key Peninsula Family Resource Center, PenMet Parks, Gig Harbor Fish Food Bank, Harbor WildWatch, Thanksgiving Basket Brigade, KP Community Council, Gig Harbor Canoe & Kayak Club, and many others has planned the local campaign at Volunteer Vern Pavilion at Schmel Homestead Park and at

the Food Market in Key Center.

The event hours are from 10 a.m. to 3 p.m., organizers said.

According to event co-chairwoman Lynda Filson, the foundation's five Core Area Boards (CABs) will be represented and partner organizations will be engaged to make a difference in our community.

"This event will physically bring people from our community together. At the MDD local campaign headquarters at Schmel Homestead Park they can make a financial donation, deliver food, school supplies and winter clothing, and volunteer with area organizations, or sign up to receive needed services from these same area organizations," said Julie Gustanski, foundation past president.

Filson said this year there will also be an attempt to set a Guinness World Record for the largest maze of donated canned food. All area schools, community businesses, organizations and families are invited to bring their non-perishable food contributions to help build the maze in the park, she said.

"The challenge is on — and it's a great

opportunity for children have fun while learning to give and care for others in their community," Filson said.

Also new this year is a drop off site on the Key Peninsula for non-perishable food, school supplies, eye glasses, winter clothing and new toys and new clothes for children's holiday gifts next to the Food Market in Key Center.

Building on the success of the first GHKP Make A Difference Day, Filson said they are hoping to double what was accomplished in 2013.

- Registered 85 volunteers for community agencies
- Participation of 15 non-profit agencies
- Collected 400 pounds of food and over \$10,000 for area food bank organizations.
- Distributed many coats and blankets for those that need warmth in the winter months

During the event, people can sign up to donate time, food and other vital resources, or learn about access to resources to help meet diverse family needs, Filson

added.

"Making a big difference is the result of many people making little differences," said Joel Wingard, president of The Greater Gig Harbor Foundation. "Participating in the GHKP Make A Difference Day raises awareness and helps meet the needs of our communities."

For information, to sign up as a volunteer or apply for a booth, call (253) 514-6338 or email diffday@gigharborfoundation.org.



NW SPORTS
PHYSICAL THERAPY, INC.



Celebrating 30 Years Serving Our Patients

Our Services Include:

- Orthopedic Rehab • Pre & Surgical Rehab • ACL Prevention and Rehab • Sports Conditioning & Training • Neuro Rehab • Back & Neck Care • Work Injury Rehab • Sports Injury Rehab

Call today... (253) 851-7472
4411 Pt. Fosdick Dr., Ste. 101
Gig Harbor, WA 98335


Horseshoe Lake Bar & Grill



We're here for all your parties and tournaments

Full service bar
Hours: Mon-Fri 11-7 Sat-Sun 7-7
253-857-3326 www.hlgolf.com

HOME EXCAVATING & DOZING



NATURE TRAILS,
BEACH ACCESS,
SITE CLEARING & PREP.,
LOGGING,
ROCK WALLS & STEPS,
DRAINAGE SYSTEMS,
ROAD GRADING,
DEMOLITION,
STUMP REMOVAL,
GRAVEL &
TOPSOIL DELIVERIES,
& MUCH MORE.

DIFFICULT JOBS ARE OUR SPECIALTY!

(253)884-5798

The Mustard Seed Project

Building an Elder-Friendly Key Peninsula

Our October Third Thursday Community Forum

Medicare Open Enrollment: You've Got Choices

Welcome back our presenter:
Sandy Ruffo, SHIBA Volunteer

Statewide Health Insurance Benefits Advisors – a consumer protection program of the Washington State Insurance Commissioner's Office)



Got questions? Get unbiased answers!

Thursday, October 16, 2014 ♦ 10 a.m. ♦ FREE

Key Center Fire Station Meeting Room
Transportation Available ~ Please call 884-9814 for details

SAVE ENERGY ▶ SAVE MONEY

It's Payback Time! Going Green Rebates



5 ways to save money on your power bills, help the environment and get paid for replacing your old...

- ▶ **Windows**
 - Save \$6 per sq. ft. for window replacement (electrically heated homes & \$1000 max. rebate)
- ▶ **Ductless heating & cooling system**
 - We'll help you pay for an upgrade from your baseboard or wall heater (up to \$1000 rebate)
- ▶ **Refrigerator**
 - We'll pick-up your old, energy-hungry refrigerator or freezer and send you a check for \$20 (must be working)
- ▶ **Heat Pump**
 - Have a qualified contractor install or upgrade your home to a high-efficiency air source heat pump and you may qualify for a rebate of \$400–\$1500

*rebates are subject to change at any time, please contact us for more details



Contact us to learn more 253.857.1516 or
email energyspecialist@penlight.org
Visit www.penlight.com

Peninsula Light Co.
a mutual corporation • since 1925
The power to be...

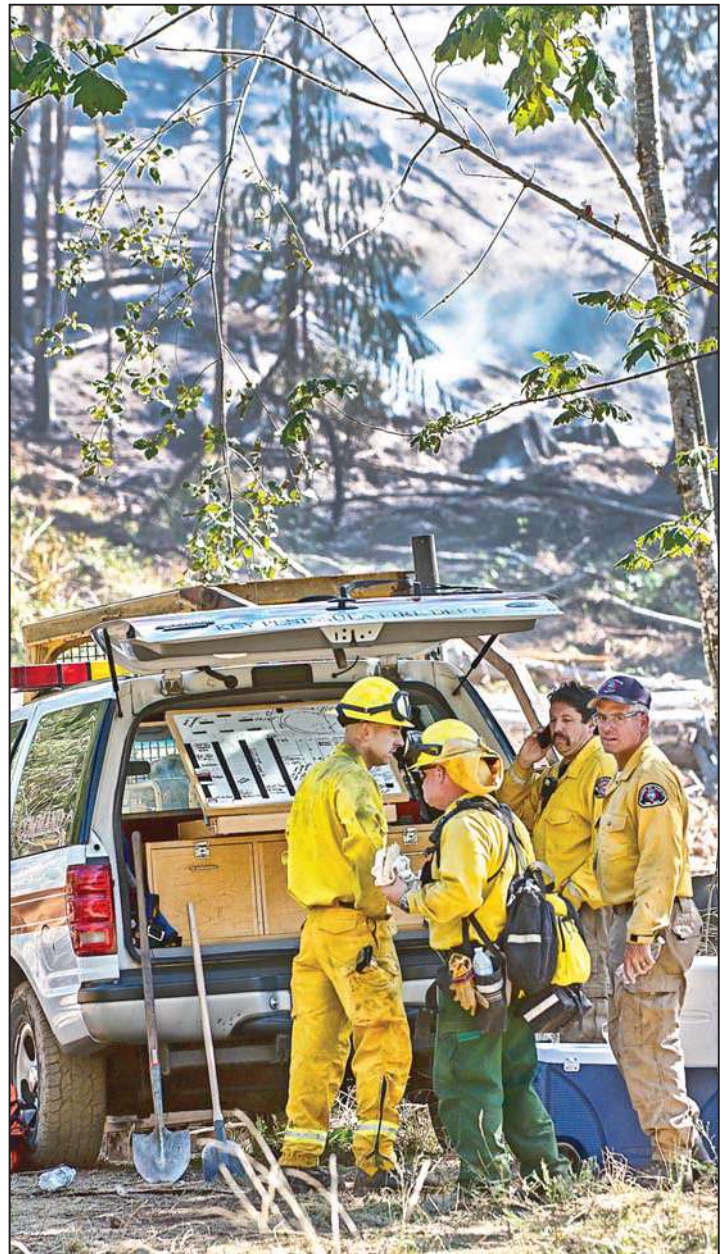


Photo by Ed Johnson, KP News

A brush with fire

Fire crews take a break during the aftermath of a Sept. 12 brush fire on Hoff Road, in Lakebay. Key Peninsula Fire Lt. Todd VanScoyk said crews responded to the blaze at about 1:51 a.m. Arriving crews found a working 3- to 5-acre fire with plenty of fuels on the ground because of the recent logging process. According to VanScoyk, a strike team comprised of equipment and personnel from other districts was called quickly. He said the fire was called "under control" by 9 a.m. the same day. There were no injuries, and the cause of the fire was still under investigation.



Photo courtesy of Larry Wingard

Gourd gigantea

Annie Greetham poses on the Shiloh Farm giant pumpkin for her 7th year in a row. The pumpkin weighs approximately 500 pounds. This "Giant in Our Pumpkin Patch" can be used for family picture-taking throughout October. It's located at Shiloh Farm, 188th Avenue and Herron Road KP N.

SCHOLARSHIP FOR FOREIGN TRAVEL AVAILABLE

Enter the Key Peninsula Lions Club Speech Contest

Basic Rules

Must be age 16 to 20, live on the Key Peninsula and have completed or be studying U.S. History.

Enter and win the speech contest.

For full details contact Key Peninsula Lions Club member George Robison at 253-853-2721



CANDIDATE FORUM

7 p.m. on Tuesday, October 7

★ at Key Peninsula Civic Center ★

Presenting candidates seeking these elected offices:

U.S. Representative 6th Congressional

State Senator 26th Legislative District

State Representative 26th Legislative Pos. 1

State Representative 26th Legislative Pos. 2

Pierce County Council District No. 7

Sponsored by:

Key Peninsula Business Association

Key Peninsula Community Council

Key Peninsula Civic Center Association

Key Peninsula News

Farm Tour Pancake Breakfast

Fundraiser Breakfast and Open House

Saturday, Oct. 4, 8 am to noon, Key Center Fire Station



The dedication of the new two-story training prop will be at 11 am followed by a live fire simulation and rescue and a children's fire safety training prop.

Money raised will go toward the purchase of a high lift jack (extraction tool).



COMMUNITY PAGES

Submit calendar items to news@keypennews.com • Deadline is the 15th of the month

NOW UNTIL OCT. 4

Make a scarecrow

Groups, businesses or individuals may make a scarecrow to display in Key Center to promote the Farm Tour to take place Oct. 4. It's called a "Scarecrow-pocalypse in Key Center." This is fun and there will be prizes. Contact Kathy, 884-1592 or kathybarrett03@gmail.com.

NOW through DEC. 23

Swimming

Adult water aerobics/lap swim is available Tuesdays and Thursdays 8:30 to 9:30 a.m., and Mondays, Wednesdays and Fridays 10 to 11 a.m. Cost is \$4.25/session prepaid monthly at first monthly session. Family Swim is the first and third Wednesdays 5 to 6 p.m.; cost is \$4.25/swimmer over age 2 or \$15/family to be prepaid monthly at the first session. All swimming is in the heated pool at the Easter Seals Camp Stand by Me. 884-2722.

OCT. 2

Cat-lover meeting

Cat Tales 4-H Club, for children ages 5 to 18, meets 6:30 to 8 p.m., in the VFW of the KP Civic Center. Learn all about cats with some cat-loving friends. There is an informational open house for interested kids at this meeting. Dianna, 884-4182 or cat.tales4h@gmail.com.

OCT. 2, 9, 16, 23, 30

GED help

Teens, young adults and adults receive help, from local educators, preparing for a GED, completion of high school or college and placement tests 9:30 to 11:30 a.m., at the Key Center Library. Call 548-3309 to make an appointment.

OCT. 3, 17, 24

Skate night and teen fun

Skate Night takes place at the KP Civic Center 5:30 to 8:30 p.m. No skate night on Halloween. 884-2456.

OCT. 3, 10, 17, 24, 31

Family story time

Family story time including stories, art activities, rhymes, singing and finger plays

followed by a learning-filled play time for caregivers and children is at 11 a.m., at the Key Center Library.

OCT. 4

Pancake breakfast

Start your touring on the KP with a pancake breakfast (free, but donations accepted) beginning at 8 a.m., at the Key Center fire station; many surprising activities are in store.

Farm tour

The eighth annual free KP Farm Tour happens rain or shine from 10 a.m. to 4 p.m. Pick up programs and maps at Gateway Park in Wauna, or just go to any of the stops on the tour. Most stops will offer food for donations or for sale.

Fiber arts show

The seventh annual Fiber Arts presentation at the Longbranch Improvement Club is open 10 a.m. to 4 p.m.

SAT practice test

"Life after High School," a free SAT full-length practice test, may be taken at the KC Library beginning at 10 a.m. The test may take 4 hours. Register online at piercercoun.tylibrary.org or call 548-3309.

OCT. 6, 13, 20, 27

Bloodmobile

The bloodmobile is at Albertson's 11:30 a.m. to 6 p.m.

OCT. 7

Candidate Forum

The public is invited to attend the candidate forum at 7 p.m., at the KP Civic Center.

OCT. 7 and 21

Senior shopping

Seniors have an opportunity to go grocery shopping and attend any scheduled Gig Harbor doctor's appointments with transportation provided; a "Dutch" lunch is included. 884-9265.

OCT. 7, 14, 21, 28

Story times

Story time for babies ages 0-24 months is at 10 a.m., and for toddlers ages 2-3 years

To submit an event

To submit an event for the Community Works calendar, please email news@keypennews.com, or mail to P.O. Box 3, Vaughn, WA 98394. Briefs must be submitted by the 15th of the month.

is at 11 a.m., at the Key Center Library. All children must be accompanied by an adult. 548-3309.

OCT. 8

Garden club meets

The Bayshore Garden Club meets 1 p.m., at the fire station in Longbranch. Francine, 569-1381.

OCT. 9

Ashes meet

The Ashes support group for Fire District 16 meets 10:30 a.m., at the fire station in Key Center. 884-3771.

Book adventures

Children ages 5 to 10 celebrate favorite book characters, Elephant and Piggie, through stories, activities and crafts at 4:30 p.m., at the Key Center Library. 548-3309.

OCT. 9 and 23

Free clinic

Non-emergency medical care for KP residents without any medical insurance is provided 5:30 to 8 p.m., at Key Peninsula Health and Professional Center in Key Center. 884-2234.

OCT. 10 and 24

Teen fun

Club Cosmic for high school kids is 9 p.m. to midnight at KP Civic Center. 884-3456.

OCT. 11

Flu shots

The Key Medical Center will be providing flu shots for any adult in the community from 9 a.m. to noon at the Key Medical Center (15610 89th St, Key Center). Flu shots are available at the KP Community Service Center in Lakebay on Wednesday, Oct. 15 during the noon lunch. 884-9221.

OCT. 12

Sunday bluegrass jam

Bluegrass Gospel Jam session is hosted at Longbranch Church (16518 46th Street KPS) 6 to 8:30 p.m., for all acoustic instruments, ages and skill levels. Everyone is welcome to play, sing or simply listen. Bring music stand and finger food to share; music and beverages are provided. (253) 492-4177.

OCT. 14 and 23

Crochet or knit

The Loving Hearts group knits and crochets for charities and meets on Oct. 14 at 1 to 3 p.m., and on Oct. 23 at 7 to 9 p.m., at WayPoint Church. Yarn donations are always needed. Virginia, 884-9619.

OCT. 16

Story time

The KP Historical Society presents a new program for preschool-aged children and their parents that complements the museum's "Forest to Farm" exhibit with a book, an artifact and a make and take project featured 11 to 11:30 a.m. Parents must accompany their child. No reservations required for groups of 6 or more, but a note or call that you plan to attend will ensure enough materials are available. Another session is planned for Nov. 20. info@keypeninsulamuseum.org or 888-3246.

OCT. 24

Club cosmic

Teens enjoy DJ battles, dancing, games, including dodge ball (with glow-in-the-dark balls), name that tune and contests with cash prizes. A limited concessions menu with snacks is offered. Entrance is \$5. 884-3456 or kpciviccenter@centurytel.net.

OCT. 25

Photography exhibit

The Friends of the Key Center Library invite the community to "Hiking in the Great Northwest" with photographer and naturalist Alan Bauer. Enjoy an afternoon of brilliant photography and entertaining stories at 2 p.m. at the KC Library. 548-3309.

(See **Community**, Page 13)

PUBLIC MEETINGS

KP Lions' dinner, program

Oct. 1 and 15, 6 p.m., in VFW Room, KP Civic Center; 853-2721.

KP Veterans

Oct. 6 and 20, 7 p.m., at McColley Hall/KP Lutheran Church; Frank, 509-8656 or John, 884-5042, kpveterans.net or keypenveterans@outlook.com.

Key Peninsula Council

Oct. 8, 7 p.m. meeting, featuring a construction update by DOT on State Route 302/118th at Key Center fire station; kpcouncil.org.

Peninsula School District Board

Oct. 9, 6 p.m., at Evergreen Elementary School; Oct. 23, 6 p.m. at district office.

KP Civic Center Association Board

Oct. 9, 7 p.m., in Whitmore Room, KP Civic Center; kpciviccenter.org.

Key Pen Parks

Oct. 13 (budget meeting) and 27, 7:30 p.m., at Volunteer Park; keypenparks.com.

KP Fire Department

Oct. 14 and 28, 5 p.m., in meeting room, fire station in Key Center; keypeninsulafire.org.

KP Land Use Advisory Commission

Oct. 15, 6:30 p.m., at the KC Library; chuck-west@hotmail.com.

LIC

Oct. 15, regular potluck, 7 p.m., at Longbranch Improvement Club; 884-6022 longbranchimprovementclub.org.

KP Citizens Against Crime

Oct. 16, 6 p.m., at fire station in Key Center; kpcitizensagainstcrime.org.

KP Farm Council

Oct. 27, 6:30 p.m., at fire station in Home; c.wiley@mac.com.

WEEKLY EVENTS

MONDAYS & WEDNESDAYS

Free lunch

Free lunch for all children, ages 1 to 18, is served 11:30 to 12:30 p.m., at KP Civic Center from Aug. 4 to 20.

MONDAYS, WEDNESDAYS & FRIDAYS

Community walk

Free walking for exercise 9 to 11 a.m., in the KP Civic Center gym. 884-3456.

Senior exercise class

The S.A.I.L. program, taught by Marilyn Perks, meets 10 to 11 a.m., at the KP Community Services in Lakebay. Participants must register with Marilyn, 884-4440.

TUESDAYS

Story times

Summer stories for babies (ages 0-24 months) at 10 a.m., and stories and crafts for toddlers (ages 3-6 years) at 11 a.m., at the KC Library runs all summer starting June 24. 548-3309.

Key Singers rehearse

Key Singers, a local community chorus, rehearse for the Christmas season, 7 p.m., at Key Peninsula Lutheran Church. Open to all who love to sing; annual dues are \$10, which pays for rent, scholarships, music and concert refreshments. 884-5615.

TUESDAYS & THURSDAYS

Senior tai chi club

Senior tai chi meets 9:30 to 10:30 a.m., at the KP Community Services in Lakebay. 884-4440.

Preschool play time resumes

The Children's Home Society KP Family Resource Center offers a preschool/toddler indoor park program 9:30 to 11:30 a.m., at the KP Civic Center. Caregivers must stay with child. Drop-ins are welcome; stay for as long as you wish. A \$1/child donation is suggested. Tam, 884-5433.

WEDNESDAYS

Writers meet

The Lakebay Writers meet 1:30 to 4 p.m., at the Key Center Library. 884-3931.

Writers' workshop

The Watermark Writers present a free writer's workshop 5 to 8 p.m., in Vaughn. (253) 778-6559.

TUESDAYS & SATURDAYS

KPHS Museum open

The KPHS museum, located at the KP Civic Center in Vaughn, is open Tuesdays and Saturdays, 1 to 4 p.m. "Forest to Farms — The Land, the People, the Legacy" is this year's display. No admission charge, but monetary donations are welcome. Check us out on Facebook - Key Peninsula Historical Society. 888-3246.

WEDNESDAYS & FRIDAYS

Senior meals

Nutritional meals for seniors ages 60-plus are served at noon at the KP Community Services; a \$2 donation is requested. Guests (ages 50-59) of senior attendees are requested to donate \$2.50. 884-4440.

THURSDAYS

Toastmasters

The Toastmasters meet 8 to 9 a.m., at the Key Center Library. Join the fun and improve your speaking ability. The Toastmasters invite the community to a breakfast and open house on Oct. 9 from 8 to 9:30 a.m., at the KC Library. 858-5761 or (253) 548-3511.

Seniors' lunch

The Key Peninsula Senior Society meets at 11 a.m., for a potluck, fellowship and games in the Whitmore Room at the KP Civic Center. All are welcome. 884-4981.

Bingo

Free Bingo at the KP Community Services in Home 7 to 9 p.m. 884-4440.

SATURDAYS

The Writers' Guild

The Writers' Guild meets the first and third Saturdays 10 a.m. to 12 noon at the KC Library. 884-6455.

Lakebay Jam with 302

Lakebay Jam with 302 is 6:30 to 9 p.m., weather permitting, at the Lakebay Marina. Call ahead at 884-3350 or glory-promo@gmail.com.

(From Community, Page 12)

OCT. 28

4-H meeting

The 4-H Guinea Pig group meets 6:30 to 8 p.m., in the Civic Center library (upstairs). Nanette, (360) 981-5292.

OCT. 30

LEGO building

Kids ages 8 to 17 build and program a robotic vehicle using LEGO Mindstorms 4 to 5:30 p.m., at the Key Center Library; drop-ins are welcome. 548-3309.

OCT. 31

Carnival

The KP Civic Center hosts a free Halloween Carnival open to all families on the Key Peninsula 6 to 8 p.m. Enjoy costume contests, carnival games, bounce house, carved pumpkin contest and other activities. For more info or to donate candy or contest prizes, call 884-3456 or kpciviccenter@centurytel.net.

SCHOLARSHIP FOR FOREIGN TRAVEL AVAILABLE

Enter the Key Peninsula Lions Club Speech Contest

Basic Rules

Must be age 16 to 20, live on the Key Peninsula and have completed or be studying U.S. History.

Enter and win the speech contest.

For full details contact Key Peninsula Lions Club member

George Robison at 253-853-2721



Key Pen connects to Bangladesh by 'Threads'

By Danna Webster
for KP News

The 2014 Gig Harbor Film Festival officially accepted an independent documentary film produced by a local Herron Island couple on Saturday, Oct. 18.

"Threads," produced by Cathy Stevulak and Leonard Hill will screen at 1:05 p.m. for the convenience of Herron Island ferry riders.

"Much of our early inspiration came from talks during aqua-aerobics at the Easter Seals' pool," said Stevulak, an Angel Guild volunteer, and adds that they were also helped in the early stages by showing trailers for the film at the Key Center Library where the audience provided feedback.

"Threads" is a documentary about one of Bangladesh's first women artists who liberates herself and hundreds of others from

social and economic hardships by creating timeless works of art.

Surayia Rahman transforms an ancient quilting tradition and, over 30 years, trains destitute women to stitch their elaborate stories.

But Rahman never expected that destitute young mothers would come to search for her, or that the elaborate art that they created together would find its way to dignitaries and private collections around the world.

Visitors to the Fiber Arts Shows at the KP Farm Tours will see original works by the artist featured in the film.

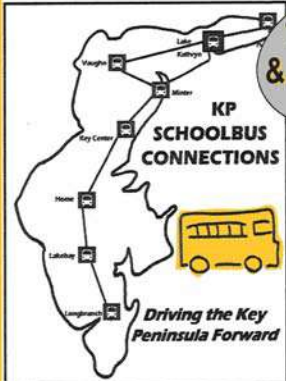
The Gig Harbor Film Festival runs from Oct. 16-19, 2014 at the Galaxy Theatre in Uptown Gig Harbor. Tickets are available at the Gig Harbor Film Festival office next to the Galaxy Theatre, or online at gigharborfilmfestival.org.



Leonard Hill and Cathy Stevulak with Surayia Rahman in her home in Bangladesh, showing Surayia clips from the first film shoot for "Threads."

Courtesy photo

KP SCHOOL BUS CONNECTS
Tuesday Trips to Town
 AN INNOVATIVE TRANSPORTATION PROJECT



Tuesdays & Thursdays

FREE COMMUNITY TRANSPORTATION FOR ALL AGES
 ON OFF-DUTY SCHOOL BUSES

KP BUS CONNECTS RIDERS TO
 KEY CENTER,
 LAKE KATHRYN, VOLUNTEER PARK,
 KPCS/FOOD BANK, LOCAL STOPS
 AND PURDY PARK & RIDE

SCHOOL BUSES AREN'T JUST FOR KIDS ANYMORE!
 (UNDER AGE 12 ACCOMPANIED BY AN ADULT)

For info & User's Guide, please contact www.kpcouncil.org or call: 253-884-8USS (2877)

KP COMMUNITY COUNCIL is a partner with the PENINSULA SCHOOL DISTRICT.
 User's Guides available at: The Mustard Seed Project office, the Library,
 and the KPCS/Food Bank

KEY PENINSULA VETERANS

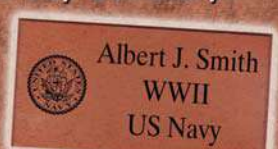
COMMEMORATIVE BRICKS FUNDRAISING

Permanently honor a person, event or idea with a lasting message on a laser-engraved commemorative brick.

Individual/family bricks are \$45 (duplicates are \$30)	Corporate/business bricks are \$85 (duplicates are \$60)
--	---

Installation locations are at the base of the new memorial flag pole at Volunteer Park and the flag pole at Vaughn Bay Cemetary.

Bricks are for sale at local events attended by Key Peninsula Veterans or at www.kpveterans.net.



Trip the light fantastic for adults at KP Civic Center

By Scott Turner, KP News

Get out your dancing shoes, grown-ups. There's a dance at the Key Peninsula Civic Center every month, starting Sept. 27.

Spenser Abersold, general manager of KGHP-FM is bringing a big stack of tunes from the 1950s, 60s and 70s to the civic center the last Saturday of every month.

"I'll have old favorites like 'Moon River' and 'Stranger on the Shore' and all sorts of other standards and love songs," Abersold said.

"I've always felt that people in our parents' age group don't have a lot of places they can go and hear the music they like to hear. So this is a unique opportunity to feel young again. Something to do after dinner or just to get out of the house," he said.

Abersold has been working on this idea for more than three years, but couldn't find the proper venue.

"I tried a couple of places in Gig Harbor like the Yacht Club and the distillery,

but for whatever reason they just didn't work," he said.

He finally thought of the KP Civic Center and approached the board of directors with a proposal.

"He just showed up out of the blue at an executive committee meeting last spring," Bruce Macdonald, civic center secretary-treasurer, said.

"He told us about a dream he had had for several years of putting on a dance for the adults in the Key Peninsula. The emphasis would be more on the social aspect rather than making it a huge fundraiser. It would be an evening for grownups to get together and dance like they used to," he added.

According to Macdonald, the civic center group has tried to do similar things over the years, with varying degrees of success. "Mostly, we haven't been able to find enough volunteers," he said.

"But Spencer was willing to staff the whole thing and do the promotion and run it for us. And we thought it sounded like a good idea so we gave him the go

Want to go?

The Key Peninsula Civic Center and KGHP-FM radio are partnering in monthly dances for adults at the Civic Center starting Sept. 27. Dances will take place the last Saturday of every month from 7 – 10 p.m., with a break for the holidays in November and December. Tickets are \$15 for couples, \$8 for singles at the door. The civic center is located at 17010 South Vaughn Road KPN in Vaughn.

the gatherings, "and we'll also have some kind of desserts," he said.

He's keeping ticket costs affordable — just \$15 for a couple and \$8 for singles — and proceeds from the dances will be divvied-up between the civic center and the radio station.

Abersold plans to take a two-month break during the holiday season in November and December, but he'll be back in January and the dances will continue through the spring, he said.

Basically, Macdonald said, the dances are a pilot program.

"Spencer doesn't hold out any expectations that this is automatically going to work, but we all think that there might well be a market for this and an interest in it and we're willing to experiment," Macdonald said.

"It's a win-win for everybody and everybody benefits. And most importantly, the civic center fulfills its mission of providing this sort of activity and making the facility available to the community," he said.

For information visit kghp.org.

ahead," Macdonald said.

The Key Peninsula is "a target-rich environment," Abersold said. "There are a lot of people out there who probably don't want to drive all the way into Gig Harbor for entertainment and are looking for something to do."

In addition to music, Abersold has also arranged for 7 Seas Brewing and Nobel Winery to provide liquid refreshments for

HYDROPONICS | LIGHTING | ORGANICS

Complete Package only \$199!

1000W SW Hardcore Ballast, Econowing Reflector and 1000W SunSystem bulb

\$10 off*

with purchase of \$50 or more

KP Indoor Garden Store

8912 Key Peninsula Hwy N • Lakebay, WA 98349
(253) 88 4SURE (7873) | KPIndoorGardenStore.com
Open Mon-Sat 11-7

* Not valid with any other offers. Expires 10-31-14.

Garden all winter indoors!

Key Pen Parks Foundation is a 501(c)3 member of the Land Trust Alliance whose primary focus is preserving and enhancing the quality of life on the beautiful Key Peninsula.

Our primary missions include providing a means for charitable donation of land to the Key Peninsula Park District for active or passive use, and to support community access to public lands through youth scholarship programs, facility improvements, and land preservation.

Our guiding principle is to enhance access to our many trails and parks so our friends, families and visitors may enjoy the many pleasures the Key Peninsula has to offer.

HELP BUILD YOUR KEY PEN PARKS SYSTEM:

VOLUNTEER - with programs, trail improvements or whatever your talent

GIFTING - through cash donations, land trusts, other assets

For more information: www.keypenparksfoundation.org or on Facebook: Key Peninsula Parks Foundation

Troop 220 welcomes seven new Eagle Scouts

By Hugh McMillan, KP News

Sunday, Sept. 14, the Key Peninsula Civic Center was awash with parents, siblings, friends and supporters of Boy Scouts, seven of whom from Key Peninsula Boy Scout Troop 220 were feted at their Court of Honor to receive promotion to the highest rank in scouting, that of Eagle.

A PowerPoint program projected overhead near the stage displayed the scouts going through the many activities that earned the merit badges and other awards leading to this high point of their scouting careers.

They were shown sleeping in snow caves they dug in the Cascades, hiking, biking, canoeing and kayaking, building projects for local parks, presenting the colors at the annual KP Lions-sponsored Citizens of the Year Awards ceremony, helping with the annual KP Veterans' Aisle of Honor at the Vaughn Cemetery. There were images of them blazing trails for the

KP Lions annual Volksmarch, unloading at the KP Food Bank hundreds of items of non-perishable foods the Troop collects each holiday season, and shots of many other good deeds.

After being welcomed by Troop 220's AJ Holloway, the Troop's Honor Guard presented the colors followed by Scout mom Cindy Barry's invocation.

Assistant Scoutmaster Spencer Wiklund opened the proceedings and individual scouts presented each part of the Scouts' Law and Oath by hanging a plaque representing each on the stage wall and lighting a candle for each. Assistant Scoutmasters Glen Pszczola and Matthew Mills described the Troop's history and an icy venture on Mt. Rainier respectively.

Eagle candidates Michael Odell, Alex Ramirez, Evan Pernu, Kelson Mills, Jon Crane, Kevin Pszczola, and Ryan Barry held the audience with statements of gratitude for those who made it all possible. The Eagle Charge



Photo by Hugh McMillan, KP News

Key Peninsula Boy Scout Troop 220 newly minted Eagle Scouts share a moment with their families shortly after receiving their new Eagle bandanas.

was presented by Eagles Jon Hanisch, Scott Odell and Luke Vander Poel, followed by Assistant Scoutmasters John Odell and Gil Ramirez pronouncements of the Eagle Scout Promise.

Assistant Scoutmasters Steve Goins and Wiklund had the honor of presenting the new Eagle Awards and Assistant Scoutmaster Mark Burriss handed each new Eagle his plaque denoting their monumental accomplish-

ment. Following the benediction by mom Mary O'Boyle, under the direction of Scout Mitchell Nelson, the Honor Guard retired the colors.

Thereafter, munching on cupcakes and other goodies, the new Eagles modestly accepted the congratulations of their many admirers in a convivial mingling of happy Scouts, family and friends.

OCTOBER 31ST
6-8PM
CANDY CARNIVAL

NO SCARY COSTUMES ALLOWED

LOADS OF CANDY CARNIVAL STYLE GAMES
 CHILI & CORNBREAD
 COTTON CANDY & POPCORN

WAYPOINT CHURCH
 12719 134TH AVE KPN, GIG HARBOR, WA 853-7878

PER CHILD ADMISSION IS A BAG OF WRAPPED CANDY AND A DONATION OF FOOD FOR "BACKPACKS 4 KIDS"

WWW.WAYPOINT-CHURCH.ORG

ROLFZEN'S HOME SERVICES, LLC
Formerly known as LAKEBAY ROOFING, Inc.
FULL SERVICE CONTRACTOR

ROLFZH889KQ
 (253) 884-2186

Complete yard care
 House cleaning

Lakebay's Roofing Specialist

Additions *Repairs *Remodels *Decks
 Roofs *Pressure washing *Fencing

JESUS IS THE KEY TO LIFE!

Key to Life
 Church of the Nazarene

MEETING AT THE RED BARN - SUNDAYS 10:30AM



Photo by Hugh McMillan, KP News

Luke Vander Poel and Scott Odell, right, recite the Eagle Scout promise to the assemblage at the Court of Honor for seven newly promoted Eagle Scouts of Key Peninsula's Troop 220 on Sept. 14 at the Key Peninsula Civic Center.

KP Eagle Scout battles cancer

By Hugh McMillan, KP News

Determinately combatting the ravages of a cancer he is determined he will beat, Eagle Scout Scott Odell attended Key Peninsula Boy Scout Troop 220's Sept. 14 Court of Honor at which his brother Michael was one of seven Troop 220 Scouts who simultaneously received their newly earned Eagle awards.

A 2012 graduate of Gig Harbor High School, Odell was diagnosed with cancer of the liver in early June 2014. A large growth on his liver was inoperable. After beginning chemotherapy, doctors at the University of Washington have ceased treatment due to its ineffectiveness. Odell's parents, John and Cher Odell, are pursuing alternatives to treat the cancer. Unfortunately, the alternatives are not covered by John Odell's insurance.

John and Cher Odell, integral to Troop 220 for 10 years, have given to the community in many ways. John was assistant Scout Master then Scout Master while their two sons, Scott and Michael, were in Boy Scouts. Cher is active in the Peninsula schools, Troop 220 advancement chair, and Pacific Harbors Council, as well as many other functions within Boy Scouts and Peninsula schools.

Troop 220 seeks to raise funds to help pay for Odell's alternative medical treatments.

Donations can be sent to John or Cher Odell, C/O Troop 220, PO Box 642, Vaughn, WA 98394. Contributions will be welcomed at Troop 220's weekly Scout meetings at the Key Peninsula Civic Center Tuesdays between 6:30 and 8 p.m.

For information, contact Dan Vander Poel at (253) 691-4029.

Seeing Yellow?



Why all of the bright yellow in my neighborhood?

This summer and fall you may notice men and women in our service area sporting yellow clothing and carrying hand-held computers, cameras, and GPS devices. They will be looking at utility poles and other Peninsula Light Co. equipment in your neighborhood.

What are they doing?

They are here to conduct an inventory of our electrical system and record the location, condition, and photograph each piece of equipment using special GPS tools. The information will be stored in an electronic map called a Geospatial Information System (GIS). Having this type of data will greatly improve our response to outages and improve service to our members in many other ways.

Who are they?

These experts are with the Davey Resource Group, an industry leader in this field. They are easily identifiable—look for bright yellow clothing and vehicles marked with the DRG logo and the Peninsula Light Company logo. They will also be carrying identification that confirms they are employees of Davey Resource Group working for PenLight.



As they move through the 100+ square miles of our service area we will provide updates to keep you informed of their work locations.

Who can I contact for more information?

Should you have any questions please contact us at 253-857-5950

Peninsula Light Co.

a mutual corporation - since 1925

The power to be...

www.penlight.org

New community church launches at The Red Barn

By Scott Turner, KP News

For at least 10 years, a number of families on the Key Peninsula have been praying for a Church of The Nazarene to open in this community, according to Home resident Robin Hyde, whose Key To Life Church of the Nazarene celebrated its grand opening on Sept. 14.

Hyde, who has been a pastor since 1987, began his ministry in Orange County, Calif. and led a church in San Bernardino for several years.

"We had a soup kitchen out of the church and all the people you wouldn't expect to see in church became my congregation," he said.

But Hyde's family had roots on the Key and he spent many summers here. "My dad was born and raised in Longbranch and my mom's family summered in Home," he said.

In 2000 Hyde and his wife, Sonja, bought land on the Peninsula and early this year they made the move from Southern California.

It was a logical place to start a new congregation, he said, and he quickly secured support from the Gig Harbor church,



Photo by Scott Turner, KP News

Key To Life of the Nazarene pastor Robin Hyde anoints Chad Jackson and his son, Chace Jackson, 3, shortly after their Sept. 14, grand-opening service at The Red Barn.

which held a special "sending-off service" for Hyde and his small flock of followers in early August.

"We started meeting at our house and at

other people's houses and I started inquiring about different places that would be suitable for a weekly Sunday meeting," Hyde said.

"The Red Barn quickly rose to the top and

I contacted their board members and they said it would be a good fit. So now we're the Sunday tenant of the Red Barn."

Currently, there are approximately 30 members of the Key To Life congregation.

"We're basically a casual, come-as-you-are type of church and our worship is kind of big on contemporary music; we preach from the Bible and use that as our text. We're a Bible-believing evangelical church," Hyde said.

What makes "holiness" churches in general — and Key to Life Church of the Nazarene in particular — attractive is that "we're here to help you understand that God wants you to transform your life and the transformation process includes the demonstration of the reality of being a Christian in today's culture," Hyde said.

For instance, he added, he works in a job on the Peninsula "...so I can interact with people who have real needs and real hurts and real wants. So they get to know me, and I build friendships with them and I can show them an alternative to where their life

(See Church, Page 19)

OCTOBER SALE
"Fall is for Planting"

25% OFF

All Nursery Stock 25% Off
 Shrubs, Ground Covers, Trees, Perennials, Fruit Trees, Berries, plus much more!

Fall is Nipping at Our Heels... Which Means it is Time to Plant...

Garlic - 6 varieties: Italian Late, Inchelium Red, Silver Rose, Early Italian Purple, German Red, Spanish Roja

Fall Color - Garden Mums, Pansies, Asters & Kale

Spring Flowering Bulbs - Tulip, Narcissus & more

SUNNYCREST
 NURSERY & FLORAL

All Bank Cards Accepted
884-3937
 Open Every Day!
 9004B KP HWY
 Monday-Saturday 9am-6pm; Sunday 11am-4pm • Key Center

Key Peninsula Counseling Center
The Key to Happiness
 Insurance Accepted
 8903 Key Peninsula Hwy N
 Lakebay, WA 98349

253-884-3644
 www.keypeninsulacounseling.com

Longbranch Community Church
 www.longbranchchurch.net
 Come and join us for
 Interdenominational Services
 Sunday School 9 am Church Services 10:30
 -Nursery is Provided-
 16518 46th St. KPS, Longbranch
 884-9339
 God's Blessings to You - Pastor John Day

We work for you, not Wall Street.

Mark Christel
 Belfair
 360.275.3666
 lpl.com/mark.christel
 24090 NE State Rt 3, Suite G
 Belfair, WA
 LPL Financial
 Member FINRA/SIPC

Have you ever wondered who your financial advisor really works for, you or the firm? Our goal is your success as an investor. We work strictly for you. And we are backed by the strength and reliability of LPL Financial, the largest independent broker/dealer in the nation.* We focus on one bottom line: yours.

Please call to learn more and schedule a free consultation.

LPL Financial
 STOCKS • BONDS • MUTUAL FUNDS • IRAS

Todd Rosenbach
 Key Peninsula
 253.884.4787
 lpl.com/todd.rosenbach
 9013 KPN Hwy, Suite B
 Key Center, WA
 LPL Financial
 Member FINRA/SIPC

(From Church, Page 18)

has been going. And once I have earned that right, I start to talk to them about what God wants them to do with their lives," he said.

Hyde was quick to emphasize that his church is a group of believers that welcomes everybody. "I don't want anybody to feel alienated because of their socio-economic status or because of their lifestyle. We want to be known as a faith community that accepts everybody wherever they're at," Hyde said.

The grand opening celebration was a good example, with a worship service, barbecue and a visit from a motorcycle group.

Jeremiah Schuler, 18, was in attendance and he said Key To Life of the Nazarene is a great fit for the people of the Key Peninsula.

"I like it, and plan to become very involved with helping provide activities for the youth on the Key Peninsula.

Brenna Lukenvill has been coming from the get-go. She said she was looking for a church closer to home. "The pastor talks and teaches about things that really apply to my life and it seems like he understands what we have all been through," she said.

Brandon Marten, the Church of the Naz-

Want to go?

Key to Life Church of the Nazarene meets every Sunday morning at the Red Barn, 15921 84th Street KPN. Sunday School, with age group small classes, takes place at 9:15 a.m.; worship services start at 10:30 a.m.

arene district church planting coordinator, also spoke highly about the pastor and the location.

"I have mentored Robin for the past year and was just blown away by his passion. We believe that new churches reach new people, and those who haven't heard the message can come and establish a new way of helping others," said Marten during the Sept. 14 celebration.

Marten said pastor Hyde is uniquely suited for the Key Peninsula.

"He has a real past, a place where he has made a lot of the mistakes that many people have made. He's lived a real life and has experienced real forgiveness. I feel that he can identify where people are, and can talk to them in a way they can understand," he said.

For information, visit keytolifechurch.org.

Lifetime gardener operates Longbranch nursery

By Colleen Slater, KP News

"Grandpa taught me how to garden," says G T Nursery owner Tom Teague of Longbranch. They lived in Los Osos, Calif. during his growing up years.

Teague has gardened ever since in a variety of places.

After spending 17 years in the aluminum refinery in Ferndale, a job he disliked, he retired and looked for a good place to live and garden.

He's been in his wooded five acres on the Key Peninsula for a dozen years now.

"It was solid blackberries," Teague says of his property. He loves trees, and is literally surrounded by them.

He moved plants from their previous home and started adding more, including hydrangeas, one of his favorites. Mostly blue, he also grows whites, pink and red. He shows off a tree hydrangea, has a PeeGee and lace caps as well as the standard varieties.

He's an organic gardener, bringing in 40-50 yards of compost from his yard and garden service jobs.

Teague has been so busy with this "out-

side job" he hasn't spent as much time as he'd like with his own garden and nursery stock. He's currently training some helpers for the yard and garden job.

Ornamental shrubs are for sale, and in many cases, he has larger specimens to show mature sizes.

His vegetable garden, fertilized only with compost, gives seasonal produce to sell. A sign at the entry notes what's available — currently beans.

His tomatoes grow under plastic to avoid blight, but lettuce, broccoli, cauliflower, horseradish and many other vegetables thrive outside.

Assorted perennials are also standard stock at the nursery.

Three friendly cats are his garden companions, and a neighbor's rooster reminds visitors they're in the country.

One item on Teague's to-do list is to make his temporary greenhouse permanent.

That list is for his future "semi-retirement" when he can spend more time on his garden, his all-time favorite job.

G T Nursery is located at 18814 Rouse Road KP S, Longbranch. For information, call (360) 510-1160.

Looking to Rent?



Look no More!

We've Got You Covered...

Key Peninsula	2-3 bedrooms
Gig Harbor	Rents from
Port Orchard	\$995-\$1,400


Just Give Us a Call!

DK Property Management, LLC
dba L2 Property Mgmt.

888-2076

Donna Lester - Owner/Designated Broker
15510 92nd St. KPN
PO Box 688
Wauna, WA 98395

For Current Available Rentals, please visit:
lzpropertymanagement.managebuilding.com



Because Communication isn't Optional

Key Peninsula Toastmasters invites you to join us at our open house from 8-9 am on Thursday, October 9, in the Key Center Library meeting room

Do we have your curiosity yet?

Our local friendly, supportive and fun environment will assist you in joining us as we:

- Increase our confidence
- Find our voice
- Build beneficial skills for working and daily life
- And so much more, to include lifelong friends

Please contact:
Toastmasters President Thomas Longley
Phone: 253.858.5761 Cell: 253.448.5406
<http://3409.toastmasterclub.org>

Sponsored by Key Peninsula Toastmasters International

7th Annual Key Peninsula Civic Center

Winter Warm-Up

Crafts Fair & Chili Competition

Saturday, November 8th
10am - 3pm



Kids craft activities, musical performances & concessions.

Give one-of-a-kind, handmade gifts this holiday season from local artisans & crafters.

FREE ADMISSION

253-884-3456 • www.kpciviccenter.org • Facebook

Register for the chili competition on our website. Visit our Facebook photo album to see which vendors are participating this year.

KP resident, volunteer lives a history of helping

By Jessica Takehara, KP News

“Volunteering is the rent you pay on earth,” says Marcia Harris, reciting her family motto with passion in her voice. In fact, the concept of giving back to the community, her Key Peninsula community, defines how Harris spends most of her time.

Most recently, Harris has been instrumental in developing the KP School Bus Con-

nects program. This free service is for all ages and utilizes off-duty school buses to help KP residents have access to transportation. Harris urges anyone interested in this service to call (253) 884-BUSS for hours, times and new schedule.

The Key Peninsula Community Council is the organization Harris belongs to that partnered with Peninsula School District to make Bus Connects a reality. As part of the executive committee of the KPC, Harris has the opportunity to volunteer and coordinate many local events.

“It is a gathering place to have discussions about our community in order to make it better” said Harris. KPC meetings are held the 2nd Wednesday of the month at the Key Center fire station at 7 p.m.

Another group Harris volunteers with is



Marcia Harris

the Peninsula Schools Education Foundation, which began in 1995. Harris was part of the formation committee and continues to be active as part of the executive board. The PSEF supports area schools by giving grants to innovative teachers and scholarships to students. Harris encourages anyone interested in contributing to this foundation to visit psefnd.org for more information.

Volunteering was not only a mantra in the family of this Michigan native — it has been an outgrowth of Harris’ professional life as well. Starting at the office of Superintendent of Public Instruction and moving to PSD and other districts, Harris has spent her life as a public servant.

The relationships she cultivated along the way have allowed her to bridge many groups to bring ideas together. In fact, current KPC President Danna Webster understood her history of helping and put Harris’ name on the election ballot even before her 2012 retirement from the school system.

An additional local organization that is

tailor-made for Harris’ focus on volunteerism is the Gig Harbor Rotary Club. With a maxim of “service above self,” Harris has been involved with its philanthropic efforts since 1989. Rotary sponsored projects on the Key Peninsula have included improvements at Volunteer Park Field, KC Library, and many more.

Even Harris’ relaxation activity takes on the hue of volunteerism. She has always loved gardening and recently took it to the next level by receiving her Master Gardener certification. According to her, this is an in depth process comprised of online courses, final assessments and volunteer requirements. Harris uses her knowledge to help the KP community at local events by answering plant and gardening questions. The experience has been incredible for her. She said she is “always learning from the people I meet.”

Giving back to the community is something that defines Harris’ past, present and future. She also acknowledges that the Key Peninsula is full of people who are and want to “get involved.”

SOCIAL SECURITY DISABILITY
ADVOCATE/ REPRESENTATIVE

The Difference is Personal Service
95% approval rate 2005-2013
62 out of 65 cases approved in 2013

MISSION POSSIBLE
Employment Services, Inc.

253-884-9205
or
360-798-2920
www.mpes.net

NORTHWEST AUTO CLINIC

A full service repair and maintenance shop!

We Wauna fix your car!

Celebrating our anniversary! Thank you for 25 years!

Call us at 253-857-5999 Open 8 am to 5 pm Monday through Friday

SCHOLARSHIP FOR FOREIGN TRAVEL AVAILABLE

Enter the Key Peninsula Lions Club Speech Contest

Basic Rules
Must be age 16 to 20, live on the Key Peninsula and have completed or be studying U.S. History.

Enter and win the speech contest.

For full details contact Key Peninsula Lions Club member George Robison at 253-853-2721

LYSTAD CONSTRUCTION
CUSTOM QUALITY CONSTRUCTION
Serving the Puget Sound

Licensed Bonded Insured LYSTAC*89180

Oliver Lystad
General Manager / Lead Estimator
Vaughn, WA 98394

Patios - Driveways - Stairs
Retaining Walls - All Finishes

C 253.255.7012
oliver@lystadconstruction.com
www.lystadconstruction.com

Concrete
Flatwork
Concrete Pumping
Foundations
Residential
Commercial

October brings rain and wind, tis true,
And dress-up for Halloween comes too.

Try something old or something new
For a unique costume that's really YOU!

Come see our collection of
Halloween costumes and decorations

ANGEL GUILD THRIFT SHOP
in the Key Center Corral

253-884-9333 - angelguild9013@hotmail.com
Open Tuesday through Saturday 10:00 AM to 4:00 PM

The Angel Guild Thrift Shop is an independent philanthropy and is not affiliated with any other organization.

Keeping septic system healthy, worry free

By Karen Lovett, KP News

Attendees at the Sept. 13, septic workshop at the Key Peninsula Civic Center were rewarded with one-on-one help and information offered by the Tacoma-Pierce County Health Department (TPCHD).

Rather than adhere to the planned program that had been designed to address a larger audience, organizers took advantage of low citizen turnout and altered the format to work individually with citizens.

TPCHD promotion coordinator, Ji-hae Yi, was in charge of organizing the workshop.

Five presentation experts were on hand to discuss their area of expertise about on-site septic system information.

Organizers said septic problems often go unnoticed because they are underground. They said it's important to check systems periodically to keep them functioning before a failure occurs.

On-site sewage and well permitting program manager, Gary Porter, was available with a computer to access and print a copy of the resident's septic system design, layout and specifications.

Displays of functional parts of a septic system clarified how a system works and what necessitates pumping. A septic pump and the complete series of operational units of a pump system showed visitors how a pump keeps the system functioning.

A broken sewer pipe completely clogged with roots was a clear reminder what can happen when trees are growing in close proximity to a septic drain field, Porter said.

Key Peninsula resident Leslie Rowan was quite pleased with the workshop.

"I know nothing about septic systems," Rowan said. "We took advantage of the Septic Care Incentive Program for property owners to get their systems inspected and drained. If we hadn't done it, we probably would have had a back-up very soon. They had to go in and pull out dense roots in the pipes."

A number of companies are partnered with Pierce County to participate in the incentive program.

J.R. Inman with FloHawks, one the

largest pumping companies in Pierce County, stressed the importance of regular inspections every few years. Inman said that it's not necessary to pump that often, but the state requires septic tanks to be pumped before the sale of a house. Pumping frequency is dependent upon household use and the number of residents in the home, as well as cleaning supplies and other factors that contribute to the timeline necessary between pumpings.

Laverna Holwilla Spain came to the workshop with serious concerns.

"I needed septic information and help," Spain said. "My alarm goes off a lot during the rainy season and snow."

"They said it sounds like there is a leak that lets ground water get in. I'm on limited income. They're going to see about giving me assistance to get it taken care of. This is the information, but I didn't know how to get it. I felt intimidated by the problem and didn't know what to do," Spain said.

Bill Creveling of Leroy Surveyors and Engineers, Inc. discussed Spain's issues

and came up with solutions for her.

Attendees names were entered in a drawing resulting in two lucky winners. Paula Petersen won a \$25 gift card to Fred Meyer.

"I never lived with a system," Petersen said. "I just wanted basic knowledge. They absolutely answered all my questions."

Leslie Rowan won \$250 off any service from FloHawks. Since she already had her system inspected and pumped with financial assistance through the incentive program, she was pleased that her win came with no expiration date.

If you own a pressure distribution or gravity septic system on the Key Peninsula the TPCHD wants the community to know that citizens may qualify for \$125 off your inspection, \$200 off tank pumping and \$125 off riser installation. Routine inspections are required for septic systems so this is a great opportunity.

For information, call (253) 798-4788, email septicystems@tpchd.org or visit tpchd.org/incentive.



WayPoint Church
pointing the way to Jesus...

12719 134th Ave KPN
853-7878

Sunday Services
9:30am & 11:00am
Nursery, Preschool & Children's Programs
Both Services

Student Ministries
Meets Monday Nights 6:30pm
go to five17.com for MORE

LISTEN TO
SERMONS ONLINE
www.waypoint-church.org

Download
Pastor Rory's Sermon
"Do Not Fear"

Discipline Honor Respect Integrity



ATA
BLACK BELT ACADEMY

Creating Tomorrow's Leaders Today

Introductory Classes
Thursdays at 6 pm
Key Peninsula Civic Center.

Get started today for only \$70!

Call
206-949-9722
for an appointment
ATA Black Belt Academy

Glen Cove Repair

Open to service your auto & truck with integrity & honesty. Complete Auto & Truck Repair & Maintenance

Tired of searching for tires?

We now carry a full line of name brand tires. Car, truck and off road



Buy 4 and get your tires mounted & balanced for free

Offer ends 10/31/14

All Makes & Models Foreign & Domestic

- 30k, 60k & 90k Services
- Timing Belts
- CV Axles
- Complete Brake Service
- Starters & Alternators
- Front End Repair
- Engine Replacement
- Clutch & Transmission
- Complete Diagnostic Repair
- Radiator & Heater Cores
- Shocks & Struts
- Performance Exhaust

Now located at 15312 92nd St. KPN

Owners:
Eric, Manuela & Mathew Moreland
253

884-1838

Place your business card in this advertising directory
Call 253-884-4699 or e-mail ads@keypennews.com



Aspen
Land Surveying LLC
at *The Landing* in Key Center
(half a block east of the stop light)
253-303-0270 www.aspenland.com

BROOKSIDE VETERINARY HOSPITAL
Tender Loving Care For All Your Family Pets!



Lisa M. Woods, DVM
13701 118th Ave. NW
Gig Harbor, WA 98329
253.857.7302
253.857.7654 Fax

CHARBONEAU
JC

Construction & Supply
253-857-5125

LANDSCAPE ROCK • CRUSHED GRAVEL • RIVER ROCK
PT SAND • BEAUTY BARK • TOPSOIL
STEPPING STONES • WALL BLOCK • PAVERS • BRICK
DRIVEWAY CULVERT • DRAIN PIPE AND FITTINGS • MORE...



Gentilly Home Services

Home • Office • Out Buildings • Repairs
Replacement • Alterations • Decks • Fixture
Replacement • Windows • Doors • Minor
Plumbing • Water Damage
• Lights • Cabinets ...and more

Interior & Exterior

Mike Gentilly
PO Box 496
Vaughn, WA 98394
Handyman
AGENT#5931ME

Phone: (253) 884-2491
Cell: (253) 376-6227

KeyPeninsulaRE.com



Gina Menard
Real Estate Broker

Cell (253) 549-5009
Office (253) 853-7400
Fax (253) 853-7401
ginam@keypeninsulaRE.com

Key Peninsula
Real Estate

Key Peninsula
11607 State Route 302 NW
Gig Harbor, WA 98329

Historic
Vaughn Bay Church
A Community Worship
Worship Service 10:30 am
884-9303
VFW Room
Key Peninsula Civic Center

CHARBONEAU
JC

Excavating
253-857-5125

TOPSOIL • CRUSHED ROCK • CRUSHED BARK • TRUCKING
STUMP HAULING • LAND CLEARING • DRAINAGE SYSTEMS
SITE PREP • ROAD BUILDING • INSTALL BLOCK WALLS

To advertise, contact Wendy Kleven
at kpnads@keypennews.com or Brett
Higgins at sales@keypennews.com

KEY PENINSULA
NEWS

**Key to Learning Childcare/
Preschool**

"Nurturing the skills to succeed in school...and life."

Gig Harbor/Key Peninsula Area/ Minter Elementary School
Ages 3-11/ Flexible Hours All Meals Provided
Awesome Playground Great Friends
Licensed home childcare provider since 1980
Helen Macumber 253-858-3460 or 253-858-3705

Equine, Livestock & Residential Fencing—Since 1989

Warick & Janice Bryant



KIWI FENCING COMPANY, LLC
Custom Farm & Fence Solutions

13708-15th Ct. KPN
Gig Harbor, WA 98329
www.kiwifencing.com
#KIWFIC1055DA

800-598-3374
253-851-5494
fax 253-851-5550
cindy@kiwifencing.com

KEY PENINSULA CARPENTER
All Phases of Carpentry & Painting

Owner/Operator
Free Estimates/Same Day Call Back
License - Bonded - Insured



CALL STEVE
253-884-6693
Stevestem@gmail.com

Steve's Home Repair & Remodel Lic # STEVHR064J2

Have your historic event in our historic building.



Parties • Weddings • Reunions
Memorials • Fund-Raisers • More
www.longbranchimprovementclub.org
4312 Key Peninsula Highway South
call 253 884-6022

The Longbranch
Improvement Club
BETTERING OUR COMMUNITY SINCE 1921



ONE EARTH
Enterprises, Inc

Remodel • Repair • Design
253-857-7259

Ira Spector • Lic# ONEEAE92CJ
Let's Cross Some Things Off That List!



MODERN ELECTRIC
ELECTRICAL SERVICES • HOME AUTOMATION • DESIGN
CONTROL 4 DEALER

TONY FAY - OWNER **253-223-3626**

PENINSULA IRON
11020 SR 302 NW, GIG HARBOR, WA 98329

CUSTOM STEEL & ALUMINUM WELDING
GATES ~ RAILINGS ~ TRUCK RACKS


KEITH HILLSTROM OFFICE (253) 857-2056
SHOP (253) 857-8844
FAX (253) 857-2059

PIERCE CONSTRUCTION



Additions • Kitchen and Bath
Remodel Experts
New and Custom Build
Tenant Improvement and more...
NO JOB TOO LARGE OR SMALL

253-350-1275 FREE ESTIMATES
Lic# MICHAPCO44CW



Pierce County
Office of the County Council

STANLEY L. K. FLEMMING
Councilmember, District No. 7

930 Tacoma Avenue South, Room 1046
Tacoma, Washington 98402-2176
stan.flemming@co.pierce.wa.us

(253) 799-6654
(800) 992-2456
FAX (253) 798-7509

TILE WORKS

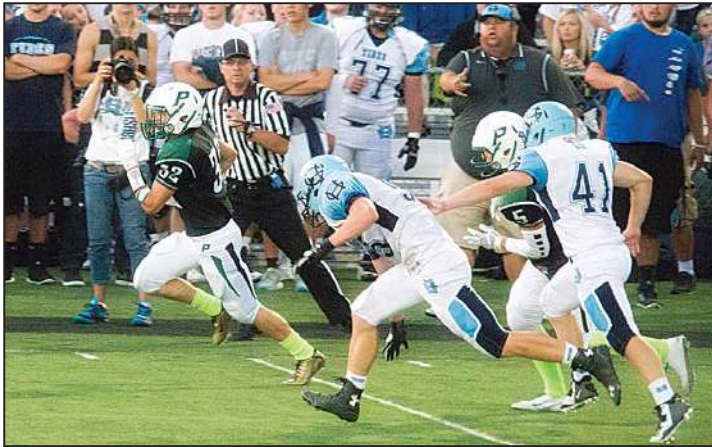
Call Scott
253-225-3005

Bonded & insured
Lic # TILEWW866N9

Installs and repairs, no job too small
Re-caulk, re-grout, or rebuild complete
Leaky showers, loose floors, cracked grout
FREE ESTIMATES - 20 years experience

Out & About

To see more Out & About photos, visit our website at www.keypennews.com and follow the Photo Gallery link. See more of your neighbors out and about, Key Peninsula scenes and happenings.



Above: Peninsula High School faced off on Sept. 5 against Gig Harbor High School for the annual Fishbowl football game. Here, Peninsula senior running back Matt Shirley outruns the Gig Harbor defense on his way to the end zone with Will Foley blocking for him. Gig Harbor won 30-29.

Photo by Ed Johnson, KP News



Right: Key Peninsula landscaping with recycled logging equipment.

Photo by Ed Johnson, KP News



Photo by Ed Johnson, KP News

Peninsula High School women's soccer team played Gig Harbor on Sept. 11. Pictured is Seahawk's KiLee Carnahan sending the ball toward the Gig Harbor goal. Gig Harbor won the game, 4-0 after a hard fought contest.

Where in the World...



Kurt and Lisa Roddy enjoy a moment with their KP News while traveling to Banos de Agua Santa, Ecuador, to celebrate their 30th wedding anniversary. The active volcano, Tungurahua, is erupting in the background

sponsored by:

BAYSIDE ANIMAL LODGE, LTD.



Where Animal Care and Friendly Customer Service are our Specialties



Duane Kinney, of Maychen's Honey, was spotted Sept. 8 teasing drivers to a booth filled with honey items for sale next to Fredda and Lori's Deli. Kinney said he and owner Maychen Kinney frequent that 11717 State Route 302 location every few weeks. The deli owners say they are open regular hours during the construction project and are offering a "construction special." For information, call (253) 858-7212.

Photo by Scott Turner, KP News

The 2014 Farm Tour is dedicated to the memory and smiles of Bill Ketts.



Key Peninsula Farm Tour



Saturday, October 4, 2014

Tour hours 10 a.m. to 4 p.m.



PET POLICY:
Good dogs rule!
Visiting dogs, please wear a leash, bring a pooper scooper, and respect farm produce.
Thank you.



TOUR INFORMATION CENTER

1 Key Peninsula Gateway Park
10215 SR 302
Gig Harbor, WA 98329 (Wauna)

2 Bea's Flowers
11918 Creviston Road KPN
Gig Harbor, WA 98329 (Minter)

3 Minterbrook Oyster Farm Company
12002 114th Street Ct., KPN
Gig Harbor, WA 98329 (Minter)

4 PackLeader Farm
14401 Crews Road KPN
Gig Harbor, WA 98329

5 Blue Willow Lavender Farm
10615 Wright-Bliss Road KPN
Gig Harbor, WA 98329 (Vaughn)

6 Firehouse Pancake Breakfast
8 am - noon
Key Center Fire Station Dist. 16
8911 Key Peninsula Highway N.
Lakebay, WA 98349 (Key Center)

7 Cape-E Farm and Vineyard
17215 7th Avenue KPN
Home, WA 98349 (Home)

Donations accepted at Firehouse Breakfast (7) and KPCS Soup Kitchen Lunch (9).
Find all 7 food venues online at www.kpfarmtour.com.

8 Trillium Creek Winery
17812 G Street KPS
Home, WA 98349 (Home)

9 KPCS Soup Kitchen Lunch
11 am - 2 pm, tours all day
Key Peninsula Community Services
17015 9th Street Ct., KPN
Lakebay, WA 98349 (Home)

10 Lakebay Marina
Shipwreck Cafe
15 Lorenz Road, KPN
Lakebay, WA 98349 (Lakebay)

11 EVENT HEADQUARTERS
Creviston Valley Farm
3421 Creviston Road KPS
Longbranch, WA 98349 (Longbranch)

12 FIBER ARTS SHOW
Longbranch Improvement Club
4312 Key Peninsula Highway KPS
Longbranch, WA 98351



THANK YOU 2014 SPONSORS

Angel Guild - Bruce Titus - Goin' Postal - Hemley's Quality Services
Key Pen Parks - KP Council - KP Business Association - KP Parks Foundation
Peninsula Light - Pierce County Planning and Land Use - Wilco



The KP Farm Tour is a production of the Key Peninsula Farm Council.