

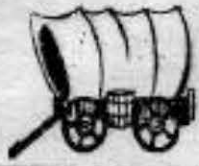
BOXHOLDER

AUGUST

Nonprofit Org.
U.S. POSTAGE
PAID
PERMIT NO. 2
VAUGHN, WA. 98394

KEY PENINSULA CIVIC CENTER

NEWSLETTER



CIRCULATION 3500

NEIGHBORHOOD NEWS FROM WAUNA TO LONGBRANCH

Vol. IV Issue No. 8

NEW MONEY-RAISER CREATES INTEREST, EXCITEMENT FOR PENINSULA RESIDENTS

At the July meeting of the CC Board considerable discussion took place regarding the First Annual Reno Night. After it was all over, it was moved and seconded and passed unanimously to have this new event.

With the appointment of Duane Fleming, long time resident and Past President of the Civic Center as General Chairman and "Pit Boss," Bob Schottland, president commented, "that if this activity is well supported, it should raise enough money to provide all the necessary funds for the remainder of the year without question."

Duane has already contacted Captain Bill Lipke, Chairman of the Daffodil Reno Night Committee and a member of the Tacoma Police Department regarding the training sessions which will be necessary to carry on the 12 hour program. Capt. Lipke has agreed to give the 4 hour training sessions at the Civic Center in September. Anyone interested in helping at this event may contact Duane.

Reno Night will start at 12 noon on Saturday, October 7 and will run continuously until 12 midnight. Food will be served during the entire 12 hour period and continuous entertainment will be provided.

It is commonly known that hundreds of Peninsula residents visit Reno and Las Vegas regularly during the year and this event will provide local people an opportunity to "play in their own back yard," Duane said.

All Peninsula residents are invited to attend and to spread the word to their friends and relatives and enjoy the "games of chance" and "strike it rich."



SIGNATURE QUILT

All area residents are invited to put their name on a signature quilt which will be a pattern called "Rail Fence", done in red, white and blue. The names will be done with white embroidery floss and the quilting will be done by hand.

The cost is only \$1.00 per name, so sign up the whole family. Do hurry, though, as there is space for only 503 names.

As a special bonus all names appearing on the quilt will be placed in a bowl and one lucky resident will receive the quilt as a permanent keepsake.

Contact Loretta LaRue, 884-2495, or any Board Member to reserve your space(s) now. It is our sincere desire to be able to award this special treasure before Christmas.

The quilt may be seen, and spaces reserved, at the Civic Center Pioneer Day Celebration, August 13, or at the Volunteer's Picnic at the Sports Center on August 26th.

SPECIAL AWARDS PRESENTED TO OUTSTANDING BOARD MEMBERS

At the July Civic Center Board meeting, Bob Schottland, president, presented a special "Gold Hammer" pin award to outstanding members for their contributions to the improvement of the Civic Center.

These pins were brought from the Soviet Union by Bob and are given to the workers in Russia who have attained the highest degree of recognition for their hard work.

Members who received the blue, white and gold pins were Eleanor and Henry Stock, Don Davis, Ed Haines, Ray Durward, Sally Cornman, Pat Cummins and Marion Wagner.

In addition to the awards, a special "Happy Birthday" was sung for Bob.

PIONEER DAYS TO HIGHLIGHT AIR FORCE JAZZ BAND AND U. S. NAVY BAND NW

Pioneer Days scheduled for Sunday, August 13 from 1 to 7 p.m. will be highlighted by two of the most popular military bands in the country. The United States Air Force "Touch of Blue" Jazz Ensemble and the U. S. Navy Band of the Northwest from Seattle will play a "Concert in the Park" program from 3:30 to 7 p.m.

Also featured for the days events will be antique exhibits, crafts and unusual demonstrations, Hog Calling, Horseshoe, Baking, Shake Splitting, Log cutting and Beard Growing Contests and a special volleyball game tournament for young people.

Ned and Barbara Richards will be preparing the "Country Cousin Dinner" which will include: Country style Spare Ribs, corn on the cob, Grandmas' pineapple cole slaw, sour dough rolls and butter, rum-apple cobbler, coffee and Grandpas' spiced punch. Price of the dinner is \$4.50 for adults and \$2.25 for children under 10.

Loretta LaRue, Chairperson for Pioneer Days also indicated there will be ice cream, cotton candy, pop corn, an auction of the baked goods entered in the contest, a Pioneer Photo Gallery and as an additional attraction for the day a very special entertainment event.

Tickets for the dinner are available from all Board members and reservations may also be made by calling the Center at 884-3456.

Everyone is invited to wear their old western outfits and hats and ladies are encouraged to wear gay 90's dresses and join in the traditional "Pioneer Spirit."

As usual, chairmen and their helpers have been selected to supervise every activity, members of this group include: Ray and Frances Durward, Don Gottwig, Bob Schottland, Annette Marlow, Betty Beal, Sally Cornman, Don Davis, Eleanor and Henry Stock, Johnny Larson, Rhys Wood, Margaret Olsen, Ned and Barbara Richards and Loretta LaRue.



P.O. Box 12, Vaughn, Wa. 98394

PUBLISHER

Key Peninsula Civic Center
President - Robert Schottland

EDITORS

Marylou Moore	884-2011
Pat Greetham	884-2500

ADVERTISING

Henry Stock	884-3739
-------------	----------

Our Pres Sez...

By Bob Schottland

As we all enjoy the summer months with family, relatives and friends who visit from all over the country, we are reminded of the numerous attractions which are available right here at home and throughout the state.

On July 30th our own annual Salmon Derby will be open to everyone and should prove to be another enjoyable activity, as well as profitable for the top winner of \$500, and for the younger angler first prize is \$25.00. This event will be topped off with a great spaghetti dinner. Why not plan to fish with friends and family and enjoy the whole day.

Then on Sunday, August 13th, our 2nd annual Pioneer Days will host two of the most famous bands in the country. The United States Air Force "Touch of Blue" Dance and Stage Band and the Navy Band of the Northwest from Seattle. These men and women will provide a "Sunday Concert" you will long remember. They will be playing for 4 hours some of the most memorable music you've ever heard.

We will also have some new contests in which everyone should either become a participant or a spectator. Some of these new innovations include: a shake splitting contest, a log cutting contest with chain saws and a volleyball contest for any groups who want to play, the winners take on all comers until we have a champion team. Then there are going to be some unique demonstrations such as a bull whip expert, an old time "rinky dink" piano player and a terrific frontier photo galley where everyone can have their pictures taken as a souvenir of the occasion.

To top this whole day of fun off, Ned and Barbara Richards are preparing a "Country Cousin Dinner" which features barbequed spare ribs, corn on the cob, grandma's pineapple cole slaw, dutch oven potatoes, sour dough rolls, sasparrilla, and rum-apple cobbler. Mm-mm good! Hope to see you all there.

FLASH, FLASH, FLASH

CIVIC CENTER OBTAINS FUNDS FOR NEW RESTROOMS. IMPROVE KITCHEN AND SENIOR CITIZEN PROGRAMS

Due to the efforts of Don McDonald, a resident of Longbranch since 1959, and presently serving as Senior Housing Counselor for the Pierce County Housing Department, the Civic Center has obtained a Title V Older American Act Funds in the amount of \$28,870.

These funds will be used to construct two new restrooms on the first level next to the present skate storage room. Some of the funds have also been allocated to improve the kitchen facilities.

An office will be provided for Don in a corner of the V.F.W. room next to the library by the end of July. He will be helping to establish a senior citizen program at the Center and to provide senior citizens with information and funds for making home improvements.

Mr. McDonald and his wife are the parents of 8 children, all of whom have attended Peninsula schools. They celebrated their 39th wedding anniversary on July 19th. Don has had a varied work career in logging, mining, construction and hospital work.

He has travelled extensively in Alaska, Western Canada and the U. S. His interests include the welfare of senior citizens and providing funds for the improvement of their housing needs.

PIONEER DAYS - COUNTRY COUSIN DINNER

SUNDAY, AUGUST 13, 1978 -3 TO 7 P.M.

FEATURING A SPECTACULAR MENU:

- * COUNTRY STYLE BARBEQUED SPARE RIBS
- * CORN ON THE COB
- * GRANDMAS' PINEAPPLE COLE SLAW
- * DUTCH OVEN POTATOES
- * SOUR DOUGH ROLLS AND BUTTER
- * RUM-APPLE COBBLER
- * COFFEE AND SASPARTILLA

IN MEMORIAM

Our sincerest sympathy to the families of Rex Murphy and Harry Strauss, who were both active participants in Civic Center activities.

COME ONE! - COME ALL!

ALL NEW GAME NIGHT AT THE
CIVIC CENTER

BIG PRIZES!!!

ALL NEW READER BOARD!!

PLAY! - RELAX! - ENJOY!

BRING A FRIEND! TELL A FRIEND!

BE A FRIEND!

ARTS AND CRAFTS FAIR

A group of crafts people in the Lakebay-Longbranch area are combining efforts to put together a Mini Arts & Crafts Fair to be held Saturday, August 26 from 10 a.m. to 4 p.m. at the Longbranch Church. A wide variety of old and new crafts will be shown and offered for sale.

Coffee and cookies will be served by the Peninsula Neighbors Craft Club. Peninsula Neighbors have been active the past few years assisting the Health Clinic and the Fire District.

SALMON DERBY

SUNDAY, JULY 30, 1978

PRIZES FOR ALL AGES!!

PRICE: \$5.00 PER PERSON.

SPAGHETTI DINNER FROM

2 TO 5 P. M.

ADULTS: \$2.50 - UNDER 10: \$1.50

TO PLACE ADS CALL

HENRY STOCK 884-3739

Keynotes

The Glencove Hotel, alias the Larry Nadeau family home, is now on the National Register of Historic Places, as announced by the office of Archaeology and Historic Preservation in Olympia. The Nadeaus are continuing the restoration process to make it as close to its 1897 origins as possible.



Mrs. A. C. Young, Lakebay, won the blue ribbon in the potted plant division in the 45th annual convention of Washington State Confederation of Garden Clubs in Yakima, June 20-23. There were 16 districts throughout the state competing for honors. She is a member of Bayshore Garden Club.



Mrs. Sally Jean McKernan and 2 sons, Scott and Shawn came up on the train from Oakland, California to visit her mother Sally Cornman and family for 10 days.



John Schroeder III is on tour for six weeks in Washington, Oregon and California with the Friends Unlimited Theatre Troupe. He is an intern with Boulevard Presbyterian Church in Seattle.

The group of six young people performs daily in churches, schools and camps. They present skits, puppets, clowns and magic.

Their last performance of the summer will be in Lakebay Community Church on August 27.

Tom and Shirley Crombe, directors of Camp Woodworth, entertained the children, grand-children and great-grand-children of Arthur Schaefer, the founder of the camp-50 years ago.

They reminisced about camping in tents, hauling water from the creek, and cooking on the old wood stove as well as about the fellowship around the campfire.

That same night, the North Hill Christian Center camp at Woodworth hosted the well-known Christian musical group "CANDLE" who have several top-selling records, for a night of singing and testimonies.



COMING OF AGE IN LONGBRANCH

There was a Big first birthday party in Longbranch on June 16th. The delicious dinner, prepared by a number of cooks, served about 75 happy people. The Festivities were to celebrate A.A.'s first anniversary of weekly meetings in Longbranch.

After the meal, Hugh Long, Director of the Treatment Program at Puget Sound Hospital in Tacoma, spoke about recovery from Alcoholism. The informative film "Chalk Talk" which outlines in sometimes humorous, frequently straight forward terms, the destructive nature of alcohol followed.

A birthday cake was then served with the usual beverage of choice at such gatherings-Coffee.

Nellie Jeanette Holman celebrated her 100th birthday recently with a big cake and friends at Evergreen Convalescent Center. Mrs. Holman, who moved to Vaughn when she was 9 years old, was the secretary of the Vaughn Library Association when it was organized. She moved to the Olympia area in 1968. She has two daughters, Mrs. Florence Stubbe, Tumwater, and Mrs. Frances Andersen, Seattle, two grandchildren, six great-grandchildren and four great-great-grandchildren.



BRINGING HOME THE BACON (BEEF)

The Peninsula Chapter of Future Farmers of America went to WSU at Pullman, WA. for the 48th annual state convention. Tony Brentin, Home, and Bob Todhunter, Longbranch, became State Farmers. Kathy Brown, Longbranch, received 2nd place in Beef Production in the state. Others from Key Peninsula attending were: Chris Andersen, Longbranch, Doug Temple, Lakebay, Ed Vivit, Mike Boudreau and Lori Deacon, all of Home. Lori was a chaperone. Agriculture teacher John Lofdahl of Vaughn was the advisor.



BSA TROOP 213, sponsored by the VFW Post 4990, has completed a week at summer camp on Hahobas Boy Scout Reservation, Merit Badges in Small Boat Sailing, Pioneering, Rowing and Skill Award in Swimming were earned by members of the Troop. Scouts attending camp were Cecil Beal, Mark Downen, Tom Lique, John Partyka and Tim Shirley. They were accompanied by adults Bob Beal and Bob Downen.

Belfair Café and Glo Room

BELFAIR, WASHINGTON
275-6226

OPEN 7 DAYS A WEEK

DIFFERENT DINNER SPECIALS
EVERY WEEKEND

IN THE GLO ROOM DANCE TO
MIKE MENDOSA

MON. - TUES. - THURS.

RAIN

WED. - FRI. - SAT.
FOR THE MONTH OF AUGUST

CATERING, BENEFITS, &
SENIOR CITIZEN DISCOUNT



No Job Too Small!

DITCH WITCH * DITCHING

BOB CAT * EARTH MOVING

DUMP TRUCK * 5 TONS AND UNDER

P L U S

CUSTOM BUILT HOMES

Richard Hale
884-2523

Key Center



THE FLAPPERS ARE HERE!

Happiness is having our seals back this summer. Last fall they deserted us when our raft broke loose in a storm and was beached for the winter. When the nice weather came this spring we put out a newer, nicer raft but it didn't have seal appeal because only one or two ventured on to it occasionally.

It wasn't until we put the old one out a couple of weeks ago that they came flocking and flapping back - 11 strong. It looks like the big Grandpa (we've dubbed him) is back along with assorted others and a new crop of 3 babies.

You still have to be an early riser to see the best show, although they hop aboard at dusk. One morning (at 5:30) the full crew of 11 were there. All the older ones were lying still, probably trying to sleep, but 2 little ones in the middle were flipping and flopping. It looked as though they were purposefully arousing each adult, eager for the day of play.

Their snorts and slaps are music to our ears, even when we are trying to sleep outside. Fortunately for late-risers, the Grandpa and occasionally 1 or 2 others will linger till late morning or come in the afternoon for daytime viewing. So sometimes our people guests can see our sea guests. They are camera shy but we hope to get pictures this summer to remember them by.

We would like to honor our outstanding students by publicly acknowledging their superior scholarship at all levels of the Peninsula school system.

At Peninsula High, Pam Coburn, daughter of Mr. and Mrs. Don Coburn of Longbranch, was sixth in her class of 308 students. Pam culminated 3½ years of hard work with her trip to Ecuador, but returned in time to graduate with her class. Jenny Rice, Minter, was also in the top 10 graduating seniors.

On the Jr. High level, Cheri Brown, Vaughn, achieved 4.0 (straight A's) grade average, 1 of 10 such students. Seventh graders from our peninsula who also got 4.0 were: Diedre Rimbach, daughter of Mr. and Mrs. Rich Rimbach of Minter; Chris Armstrong, son of Mr. and Mrs. Gene Armstrong of Vaughn; Kandi Gilman, daughter of Mr. and Mrs. Terry Gilman, Vaughn. There were 19 7th graders with 4.0.

We commend these students and their families for encouraging them.

Mrs. Ora Afdem wishes to sincerely thank her friends and neighbors who expressed their sympathy in her recent bereavement, especially the young people. She appreciated the cards, flowers and gifts in memory of Mr. Afdem, as well as all the food brought in by caring friends and members of the ASHES.

Starting this fall
Vaughn Community Pre-School
 A growing experience for children
 located and sponsored by
Vaughn Community Church
 for information call **884-3310**
 or **884-2593**



CROW'S NEST
 Closed Saturday (Monday by chance)
 On Hwy. 302 - 2 miles past Rocky Bay Nursing Home (toward Shelton)
ANTIQUE'S 275-3247
COLLECTIBLES GIFTS 884-2690

9'S FAIR HARBOR MARINA
 MONTHLY AND DAILY MOORAGE
 GAS OPEN 7 DAYS A WEEK OIL
 BAIT-TACKLE-GROCERIES-HOT SANDWICHES
 P. O. Box A Phone 426-4028
 Grapeview, WA. Res. 275-6417
 CAPT. KENNY DECK HANDS:
 1ST MATE PHYLLIS BRUCE, BONNIE & KIM



SINCE 1888

GREAT BUY
 At \$6,000 for a beautiful building site with water and power. It is zoned for mobile home if that's your thing. Call Cheryl Harrod 857-4065 ofc. or eves. 858-7750.

APPROX. 3 ACRES
 Of gorgeous trees with road frontage on two sides, for \$9,000. Great investment for the price. Located between Port Orchard and Gig Harbor. Call Cheryl Harrod 858-7750

FERRON ISLAND
 Peaceful island building lot with marine and mountain view. Perk test ok June, 76. Full price \$4,200. Call Ron Erickson 857-4065 ofc. or eves. 857-2713.

ENTERTAINING
 will be a pleasure when this characteristic home is yours. 2,450 s/f of builders pride has 5 bedrooms, 2 fireplaces. Sunken living room. Huge family room. \$50,000. Call Darlene Bergstrom 857-4065 ofc. Or eves. 857-4414.

VIEW HOME OR BUSINESS
 Live in remodeled home on five acres with a view of the water. Start your own business in the 37' x56' shop building with 34' feet of road frontage East of Key Center. \$75,000. Call Pat Payne 857-4065 ofc. or eves. 884-3775.

857-4065

11625 St. Highway 302
 Gig Harbor, Wash.

857-4065

Country Health Foods
K-C CORRAL KEY CENTER
 884-3977
 Gladys Lowry

GOOD NEWS!!!
 WE ARE NOW OPEN ON SUNDAYS
 11:00 A.M. - 4:30 P.M.

SPECIAL! - SETEBARD PROTEIN PRODUCTS HALF PRICE

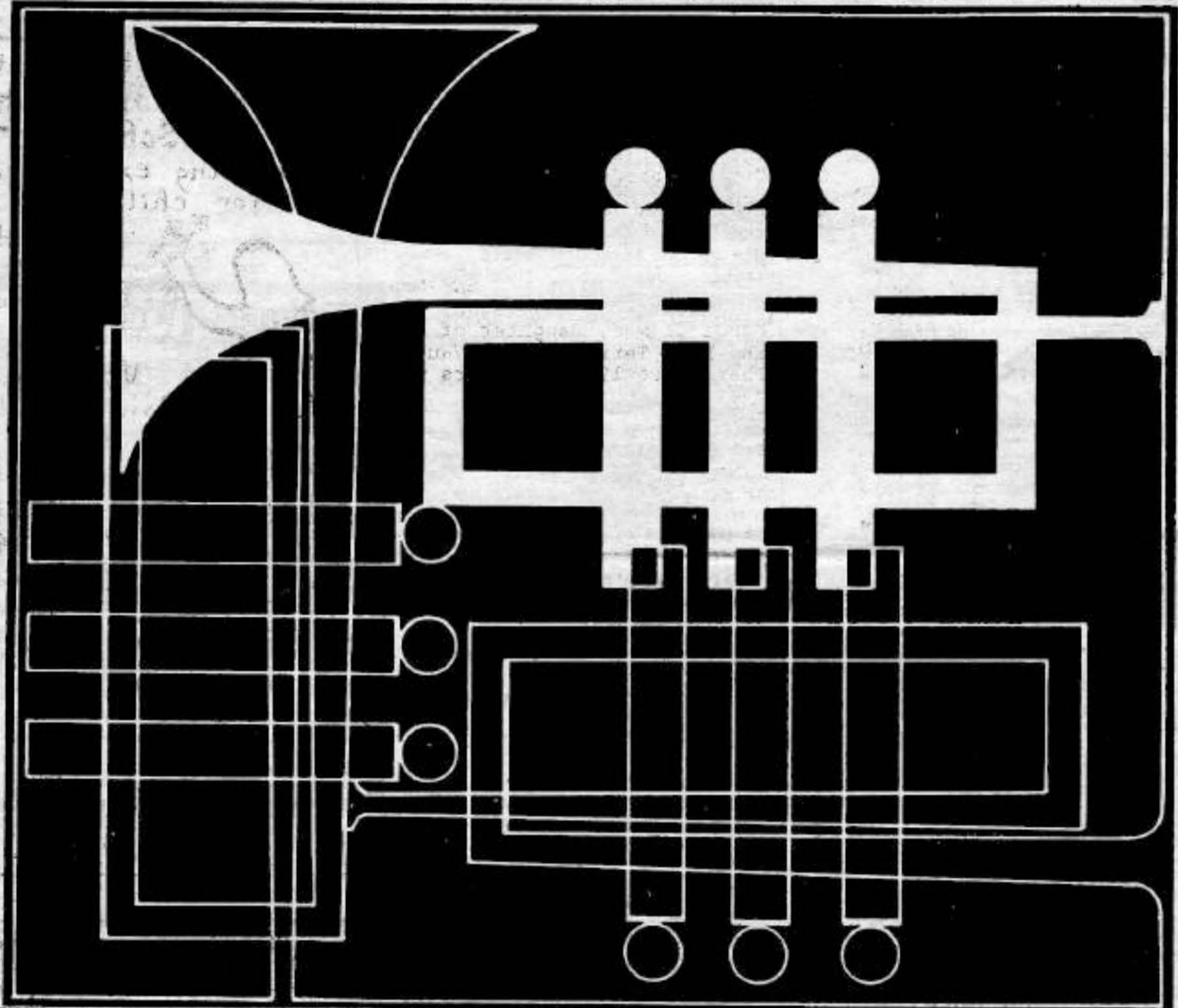
WE CARRY PURE LOCAL HONEY FROM BEE PROUD APIARY IN 7 VARIETIES

TRY OUR NATURAL HONEY ICE CREAM IN QUARTS, PINTS AND BARS IN A VARIETY OF FLAVORS.

the UNITED STATES AIR FORCE presents:

A TOUCH OF BLUE

□ DANCE AND STAGE BAND □



Today's music in its biggest most exciting form

Also Featuring the

U.S. Navy Band

from SEATTLE

Pioneer Days - August 13, - 1 to 7 P.M.

Dinner: \$4.50 & \$2.25 Free Admission Enjoy the past



WAY BACK WHEN... ROCKY BAY

Mr. Conda, a Japanese oysterman, moved onto the property south of the Wright property in 1910. He farmed the oyster beds at the mouth and in the center of Rocky Bay until 1913 when he moved to Olympia.

- Some of these beds had been planted in 1899 by H.M. Rodman when he brought the seed oysters from Seattle and planted them in front of his Vaughn Bay home, thus starting the oyster beds in both bays. The Rodman children were Helen, Margurite, Howard and Dewey.

Successive owners of this property were: Mr. Frazier who had been a packer in Alaska during the gold rush and who could easily carry 500 pounds on his back; Mr. Vance, a former police chief of Olympia; and the well-known Yoshihara family who farmed the beds from 1930 until the mid 1960's when Helen and Jimmie moved to Olympia. Judy and Don Leaf own and reside in the elder Yoshihara home while the oyster beds are owned and operated by Harold Wiksten of the Minter Oyster Co.

- Carl Olson and Bill Anderson lived in a float house and raised oysters on the east shore of Rocky Bay from 1915 to 1920. Their float house was traded to Halvor Dahl of North Bay for 10 acres of land near the Hammel-Deal Swamp and was taken to shore at Victor where it was again used as a home. When Olympic Oysters were raised in the beds near the head of Rocky Bay around 1915, creosoted planks were laid on the leveled bottom of the bay and then covered with gravel. This prevented the crayfish from "kicking" dirt on the oysters and smothering them. It was necessary to build dykes around the beds so the oysters would be covered by water the majority of low tide. The water cover was especially needed in winter to protect the oysters from frost. Remnants of the dykes are still visible. Since the

Key Peninsula Newsletter
oysters did not fatten well in Rocky Bay, they were loaded on barges and towed by the "Olive 1" to Mud Bay at Olympia to fatten. Retail price in 1920 was \$12.00 for 1 gallon of oysters.

Mrs. Pierson and her sons Lon and Tom lived to the West of Mr. Conda where they had a garden and raised some cows and chickens. This property is now the home of Evangeline and Harry Kennedy. In 1945, a madrona tree on the edge of their beach was declared to be the second largest in the state. There is still some life in this magnificent giant.

In 1915 the Redgrave family settled to the West of the Piersons. A building 70 feet by 30 feet was constructed on piling which extend out from the point in the small cove of this property. This was used as a fish and clam cannery, and there is some evidence of the structure still visible. Joe Cumbie, this property owner in the 1930's, was a successful grower of cantaloupe and watermelon. It was a great mystery how he could get them to mature when no one else was able to do so. The Woods and Gentoli families moved onto this land in 1940 and operated a cafe on the highway for several years. There are many homes now on this property with some of the owners being the Murphys, Mrs. Love, and the Whittleseys.

- Another area cafe was operated by Mrs. Slack in 1948 in the present Rocky Bay Health Care Center. This was, in reality, a boarding house for the oil drilling crew who were exploring the Carney Lake area. Their operations extended some 9 months with no information regarding their success. All holes were capped.

Merle Free Automotive Repair

All Work Guaranteed

1 1/2 MILES ON CREVISTON DRIVE - 1ST LEFT TURN SOUTH OF THE FRUIT STAND

857-4276

JEFF CHARBONEAU

Road Building Landscaping Excavating
Land Clearing Foundations

884-2971 Rt. 1, Box 142-A VAUGHN, WA 98394

OLYMPIC-WEST DRILLING CO.

858-7226

GIG HARBOR

State Licensed

SPECIALIZING

IN SINGLE FAMILY AND COMMUNITY WATER WELLS.

FEATURING

THE LATEST IN MODERN DRILLING EQUIPMENT.

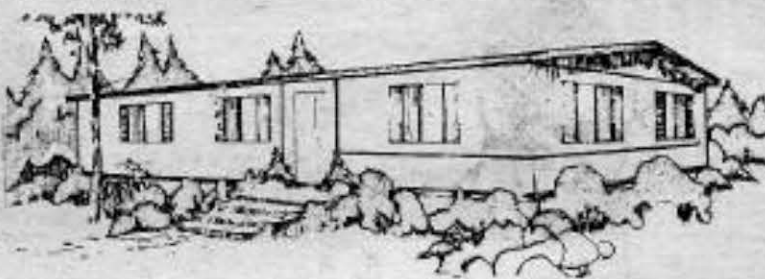


Cable Drill



Air Rotary

FREE ESTIMATES



CHACO MOBILE HOMES

15503 CEDAR PARK RD. SE.
N on highway 16 Right on Lawrence Rd. (Post Panda) to Olympic View Mobile Manor



PERSONAL TOUCH SERVICING™
AWNINGS - SKIRTING
COMPLETE ACCESSORIES
TRADE - SELL

CAMELOT → FHA * VA * CONVENTIONAL FINANCING AVAILABLE



CORINTHIAN

No Better Dining ANYWHERE CALL: 857-2241

Pearl's by the sea

Mon.-Thur. - 7:30 a.m. - 12:00 p.m.
Fri.-Sat. - 7:30 a.m. - 2:00 a.m.
Sunday - 10:00 a.m. - 12:00 p.m.

On Bremerton highway at Purdy

OUR LOW OVERHEAD SAVES PRICE & COMPRE

PLEASE CALL
857-4471
857-4421
OLALLA

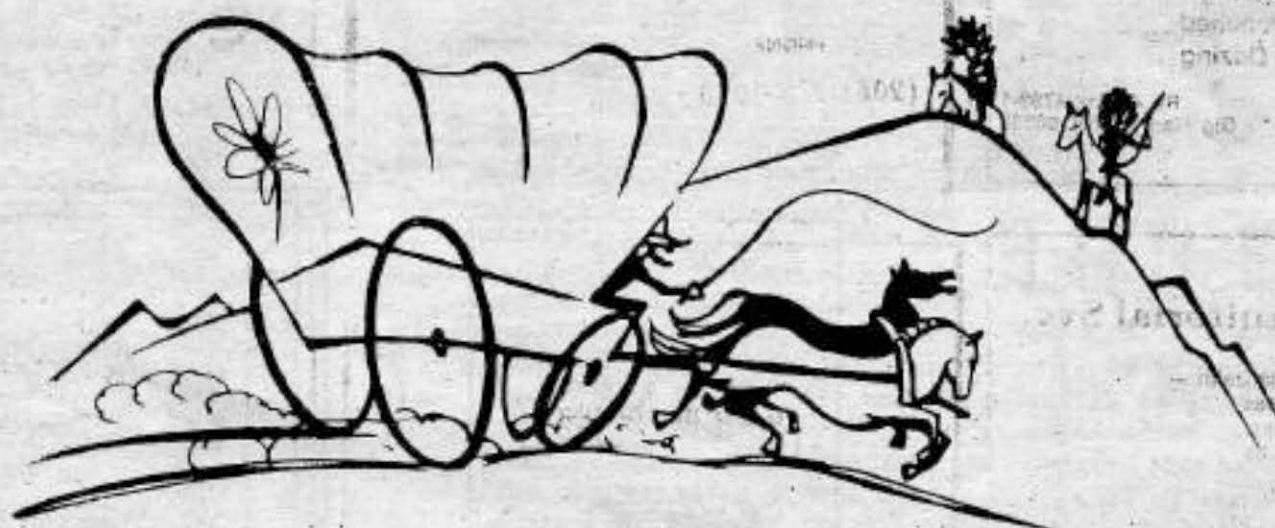


Key Peninsula Civic Center

Presents

PIONEER DAYS

August 13, 1978 1:00 p.m. to 7:00 p.m.



FUN FOR ALL!
Featuring

Super Delicious

"COUNTRY COUSIN DINNER"

(DINNER WILL BE SERVED FROM 3 TO 7 P.M.)

\$4.50 ADULTS \$2.25 (UNDER 10)

CHILDREN'S GAMES

- SACK RACES
- WHEELBARROW RACES
- DASHES
- TUG-O-WAR
- WATERMELON EATING
- BASEBALL THROW
- PENNY SCRAMBLE
- BUBBLEGUM BLOWING

HORSESHOE TOURNAMENT

LOG CUTTING CONTESTS

BAKING CONTESTS (FOR ADULTS)

- PIES
- CAKES
- BREAD
- TARTS
- ROLLS

BEARD GROWING CONTEST

VOLLEYBALL GAMES

ANTIQUE EXHIBITS

CRAFTS AND UNUSAL DEMONSTRATIONS

SHAKE SPLITTING CONTEST

BAKING CONTEST (FOR CHILDREN UNDER 12)

- COOKIES
- BROWNIES

HOG CALLING CONTEST

CHECKERS TOURNAMENT

ARM WRESTLING

INCLUDING THESE FAVORITES:

Country Style Barbecued Spare Ribs

Corn on the Cob

Dutch oven potatoes

Grandma's Pineapple Cole Slaw

Sour Dough Rolls

Rum-Apple Cobbler

Coffee

Sasparilla

SPECIAL ATTRACTION

THE UNITED STATES AIR FORCE "TOUCH OF BLUE" JAZZ ENSEMBLE

AND THE

UNITED STATES NAVY BAND OF THE NORTHWEST




THIS PAGE COMPLIMENTS OF

THE PENINSULA BANK

GIG HARBOR
PURDY

POINT POSDICK SQUARE Member FDIC

884-2345



BEE PROUD APIARY

HONEY

Huckleberry	Clover
Cranberry	Alfalfa
Fireweed	Valley

857-4427

1 blk. off Hwy. 12118 Cramer Rd. N.W.
(Camp Seymour, YMCA Rd.)

HOME THRIFT SHOP
11-4 - Fri. & Sat.

Always super bargains
Stretch your dollars




9th St. & LB Hwy. Home, WA.

L.E. Jopp Builders

- ★ Carpenter Work
- ★ Foundations
- ★ Bulkheads
- ★ Concrete Work etc.

884-3841

LICENSED & BONDED CALL COLLECT



Randy's Bulldozing

Lot Clearing
Roads Punched
General Dozing


RANDY NIMRICK 1-857-2625 857-5703

Rt. 4, Box 4783-1
Glg Harbor, WA 98335

ANDERSON WELL DRILLING

PHONE: (206) 275-3040

BOX 813 BELFAIR, WA 98526



Licensed - Bonded
"Probably the Best"

John Brewer (206) 857-2253

BREWER ELECTRIC CO., INC.

Residential-Commercial

14519 Peacock Hill Avenue, N.W.
P. O. Box 228 Burley, WA. 98322

Continental Janitorial Svc.

— We Specialize in —
Houses
Banks
Offices

Call Mon. thru Fri.
9 AM - 3 PM

871-4138

CLEARING EXCAVATING BACK FILL

D & V BULLDOZING

11672 WICKS LAKE ROAD S.W.
PORT ORCHARD, WASHINGTON 98366
876-4661

LICENSED & BONDED DURAN BURTON


JERRY YORK

York Insurance Agency

Auto • Life • Fire • Health & Accident

Post Office Box 364
Glg Harbor, Washington 98335

Office 868-6600
Res. 857-8567



Electrical Contractors

- * Residential
- * Commercial
- * Electric Heat

LICENSED & BONDED

884-2511
VAUGHN, WA.

HERON SUPPLY

Wholesale & Retail



Tools & Equipment
For Industry, Farm and Home

Warehouse Direct
No Charge Delivery
To Peninsula Area Residents

For Free Buying Guide
Containing over 7500 Items

call 884-2353

SAKURA NURSERY

Key Center, Wa.

Nursery Stock
Bonsai
Bark
Fertilizers & Insecticides
Garden Supplies

Alcoholics Anonymous

MEETS AT LONGBRANCH IMPROVEMENT CLUB

Al-Anon

MEETS AT LONGBRANCH CLINIC

GROUPS MEET EVERY FRIDAY - 8 P.M.

EXCEPT THE 3RD FRIDAY, WHICH IS OPEN MEETING AT THE LONGBRANCH IMPROVEMENT CLUB

for AA - LEE - 884-3424
RUBY - 884-2583

for Al-Anon
LEE - 884-3424
BETTY - 857-2041

GAS, OIL, GROCERIES, MEATS

COLLINS' SERVICE & GROCERY

15 years serving the Peninsula

PHONE 857-4311

Old Wauna Store



Bayside Gifts

Specialists in Dried Arrangements

Phone 857-4071 Res. 564-6482

7722 State Rd. 302 NW
Wauna, WA 98395

THE MARINA AT GLEN COVE

— NOW OPEN DAILY —

- * BOAT STALLS
- * GAS DOCK
- * LAUNCHING RAMP



884-2329

Key Peninsula Services

Buy - Sell - Swap

Key Center Trading Post

(206) 884-2220

7 MILES WEST OF PURDY ON HIGHWAY 302

Rt. 4, Box 4627 DON & LIANA FEGLEY
GIG HARBOR, WA. 98335



Shorewood Real Estate, Inc.

Key Center 884-3303

Fran Harrison

Dale Hill

Barry Hunter

Juanita Saathoff

Lee Williams

Key Center Branch
P. O. Box 345
Vaughn, Washington 98394

LAND CLEARING
ROAD CONSTRUCTION
BANKRUN - GRAVEL
FILL DIRT HAULED



Active Construction

P.O. Box 191 - Gig Harbor, WA 98335
Bus. 858-2380 - Eves. 884-2884

WALT'S FINE FOODS

HOMETOWN SERVICE
KEY CENTER - ALLYN



OPEN DAILY 9:00 A.M. - 8:00 P.M. SUNDAYS ONLY 11:00 - 6:00

FRESH PRODUCE - MEATS
ALL YOUR GROCERY NEEDS 884-3325

Rippon Electric Co.

RESIDENTIAL WIRING

Stanley G. Rippon
13414 Woodside Dr. NW
Gig Harbor, WA 98335

857-2730

The Calico Kitchen

OPEN FOR LUNCH - 10:30 TO 4:30
HOMEMADE: SOUP - PIE - SANDWICHES
CINNAMON ROLLS
SALAD BAR - NOW OPEN!

K-C Corral Key Center

D&M

BUSINESS MACHINES

TYPEWRITERS - ADDING MACHINES - CALCULATORS
CASH REGISTERS - COPY MACHINES

SALES REPRESENTATIVE
JIM EWING

474-8497
2520 SO. TACOMA WAY
TACOMA, WASH. 98409

HORSESHOEING

Hot - Cold - Corrective
Trims

Dick Schroeder

871-3101 After 6 p.m.

KEY WESTERN BUILDING CENTER & HARDWARE

SPECIAL OF THE MONTH!

PAINT
LUMBER
PANELING
FISHING TACKLE
HARDWARE



SMOKE ALARM (BATTERY)

\$19.95

Homes New Houses Insurance Work Rentals Businesses



Nita Akins
884-2405
P. O. Box 7
Vaughn, WA 98394

Johnson Bulldozing We Dig It!



BULKHEADS
EXCAVATING

SPECIALIZING IN BACKHOE SERVICE
WITH A SMILE

Key Center

884-3321

884-2362

884-2607

PENINSULA TRAIL RIDERS' NEW HORSE ARENA GOING FULL SWING

This is it! You don't have to 'hold your horses' any longer! The new arena is ready and showing lots of action.

Saturday, June 10, marked the first Western Games Play-day of the season and we're gaining momentum each time with new horses and new riders that are really getting into it.

Events include: the Keyhole Race, Barrels, Pole Bending, Scurry (jumps), Figure 8; and on the more light-hearted side: the Ribbon Race, Green Race, Baton Relay and Rescue Race (where partners "rescue" each other by horseback from an inner tube dangling 8 feet in the air), to name a few.

Ribbons are given to the third place and total points are kept with a high point Senior and high point Junior being awarded at the end of each afternoon. The pony class always captures first place in entertainment, however, with their camera clicking, laugh and thrill filled versions of the events.

Just so you won't miss any more of these fun times--the next Playdays are scheduled as follows: July 29

August 12

August 26

Activities begin at 1:00, with sign-up at 12:30. The arena is located just off the Longbranch Highway at the Whiteman Cove Rd. intersection. Watching is free and participation is only \$4.00 for a whole afternoon of fun. For further information call Gayle Shriner, 884-2370, Wayne Bates, TR6-2445, or Tina Buck, 858-2152.

Anyone interested is heartily welcome--and don't

(Continued on Page 15)



(Continued from Page 14)

think you have to be good at it to have a good time. Novice riders will find the relaxed atmosphere reassuring; experienced riders will find plenty of competition and spectators will find ample parking and good vantage points on the bleachers to see all the action.

It has taken hours and hours of work to realize this new arena. Wayne Bates has poured time and resources into the clearing, construction and surface preparation— even hand digging a well and replacing the first hand pump that was stolen—and now it is paying off in hours of kids' enjoyment and community benefit. Wayne would like to thank the community for all the help they've donated. And we, the community, would like to thank him. Many, many thanks, Wayne, and welcome to the new arena!

JOEY BROOKS OF LONGBRANCH ROUNDS A BARREL ON HIS HORSE BIG ENOUGH.

TINA BUCK AND BARBARA BEST OF GIG HARBOR FLASH PAST THE TIMEKEEPER DURING WESTERN GAMES AT THE NEW ARENA.



Key Peninsula Services



The Fruit Stand

LOCATED 2 1/2 MILES WEST OF PURDY ON HIGHWAY 302

Radio Dispatched
24-Hour Service

Licensed and Bonded
Home Patrol and Security Agency



P.O. Box 328
Lakebay, WA 98349

Phone (206) 884-3857
884-2775



BOB HALL

884-2876

YOUR PLACE OR OURS

HOMES FEED & GROCERY
9-7 weekdays / 11-6 Sundays
884-2321

Featuring "Choice Beef"
resh Produce
fishers Feed
riendly Service

CELLAR ARTS and CRAFTS

Classes • Gifts • Supplies
Tole and Decorative Painting
Decoupage
Macramé

Hrs.: 11:00 AM-5:00 PM
Sun. 1:00-4:00 PM

Phone 858-8391

2804 Pioneer Way P.O. Box 244-A Gig Harbor, WA 98335

884-2538

WOOD BULLDOZING
LAND CLEARING, ROADS, EXCAVATION
GRAVEL

RHYS WOOD RT. 1, BOX 145A VAUGHN, WA. 98394

THE PLACE TO GO IN
BEAUTIFUL DOWNTOWN KEY CENTER
IS THE
KEY CENTER TAVERN

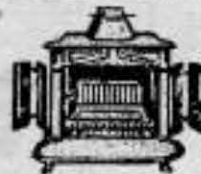
LAKEBAY CHEVRON
at the Home Bridge

8 a. m. - 6 p. m. 884-3828

Belfair

Fireplace

Shop Inc.



FIREPLACES AND ACCESSORIES
Custom masonry and installation
BUSINESS 275-5165
LEONARD HOHMANN RESIDENCE 275-5473

**TRI-CHEM
Liquid Embroidery**

GOOD SALES - NEED INSTRUCTORS

CONTACT DAISY BERRISFORD
HERRON ISLAND OR CALL
839-7272

DUANE G. FLEMING

Cascade
Insurance
Underwriters
Inc.

2200 6TH AVENUE • TACOMA, WASHINGTON 98403

AC 206/627-3133

Residence 884-3340

Bo-Mac Gravel Co.

RT. 2 - BOX 200-C
PORT ORCHARD, WA. 98366



OPEN SATURDAY

R. F. "MAC" McCLOSKEY
PARTNER

876-2003
857-4185



THE PENINSULA STATE BANK

884-2345

member FDIC

1978



HOURS
Monday thru Friday 10 a.m. to 3 p.m.
Saturday 10 a.m. to noon



AUGUST

CELEBRATE
PIONEER DAYS
AUGUST 13th
Bring the family

SUNDAY MONDAY TUESDAY WEDNESDAY THURSDAY FRIDAY SATURDAY

		1 BRIDGE CLUB - G.R. 7:30 p.m.	2 GAME NIGHT - GYM 7:30 p.m.	3 PARK & REC. BD. -GR 7:30 p.m.	4 SKATING FOR ALL AGES 7 to 9 p.m.	5 Wedding Reception G.R.
6 LUTHERAN CHURCH Sun. Sch. 9:30 Service 10:30	7	8 BRIDGE CLUB - G.R. 7:30 p.m.	9 GAME NIGHT - GYM 7:30 p.m.	10 K. P. C. C. BD. -GR 7:30 p.m.	11 LAKE MINTERWOOD -G.R. 6:30 p.m. SKATING FOR ALL AGES 7 to 9 p.m.	12 SWAP MEET 10 - 4 Inside or Outside
13 LUTHERAN CHURCH Sun. Sch. 9:30 Service 10:30 PIONEER DAYS 1 to 7 p.m.	14 V.F.W. & V.F.W. AUX. - BlueRm 8:00 p.m.	15 BRIDGE CLUB - G.R. 7:30 p.m.	16 GAME NIGHT - GYM 7:30 p.m. Children's Film Show 7:00 p.m. - G.R.	17 COOTIETTES - G.R. 7:30 p.m.	18 SKATING FOR ALL AGES 7 to 9 p.m.	19 SQUARE DANCE - GYM 8:30 p.m.
20 LUTHERAN CHURCH Sun. Sch. 9:30 Service 10:30	21	22 BRIDGE CLUB - G.R. 7:30 p.m.	23 GAME NIGHT - GYM 7:30 p.m. SCHOOL PHYSICALS By Appt. ONLY - 10-4 884-2757	24	25 SKATING FOR ALL AGES 7 to 9 p.m.	26 FIREMAN'S BALL 10 to 2 p.m.
27 LUTHERAN CHURCH Sun. Sch. 9:30 Service 10:30	28	29 BRIDGE CLUB - G.R. 7:30 p.m.	30 SCHOOL PHYSICALS By Appt. ONLY - 10-4 884-2757	31		