

BOX HOLDER

Non-Profit Org.
U.S. POSTAGE
PAID
PERMIT NO. 2
VAUGHN, WA. 98394



Key Peninsula NEWSLETTER

CIRCULATION 3600 NEIGHBORHOOD NEWS FROM WAUNA TO LONGBRANCH SEPTEMBER, 1980 VOLUME VI, ISSUE 9

CONCERN FOR PROTECTION AGAINST CRIME

A concerned group of the Key Peninsula businessmen and residents have defined our law enforcement problems and presented them to the Sheriff's Department. They are now expanding to inform the public and find solutions by holding a "Town Hall Meeting" on Thursday, October 23rd at 7:30 in the Gold Room of the Key Peninsula Civic Center at Vaughn.

All residents are welcome and county officials as well as state legislators have been invited to attend.

Each person will be given an opportunity to ask questions or voice an opinion. The meeting is sponsored by the Citizens Advisory Committee for Better Law Enforcement.

This action is being taken by the Citizens Advisory Committee for Better Law Enforcement; Chairperson, Fern Bolyard. It is sponsored by: The Gig Harbor-Key Peninsula Chamber of Commerce, the Purdy-Key Peninsula Boosters, the Helmsmen, the South Sound Land Use Association.

Do you feel fully secure from thievery, vandalism or other acts of crime against your property or person? The majority of the citizens of the Key Peninsula feel they are very unprotected in all these areas. Plans are being made to do something about these conditions.

Rural Pierce County has been accused of hiding organized crime behind a feeling of apathy. Citizens of the Key Peninsula know this is not true. Most are angry because past cries for help have gone unheeded. Some are scared to cry for help for fear of retaliation.

Protecting personal property and loved ones with the use of fire arms or guard dogs, vigilante committees or untrained volunteer neighborhood patrols could be as dangerous as the criminal element that now plagues the Peninsula.

continued on page 8



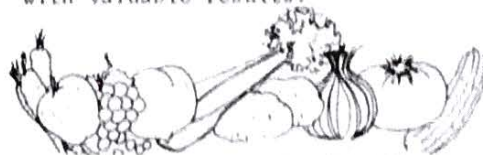
Happy Halloween

LAND USE PLANNING FOR THE KEY PENINSULA AREA

Friends and foes please read:

A public meeting will be held on Wednesday, October 22nd at 7:30 PM in the Gold Room at the Civic Center in Vaughn to discuss the pros and cons of further land use planning for the Key Peninsula. The main purpose is to define clearly what the issues are and to be sure that we all have the facts straight. Each person present will be allowed time to speak (the amount to be decided by the group) and careful records will be kept of all points made.

It will save time in recording if every one will hand in at the door a slip with his name and address. It would also be interesting to know how long each one has lived in the area. It is hoped that people on both sides will make their own points clearly and will also genuinely listen to those of others. While it sometimes seems hard to believe, meetings have been held in which people of opposed opinions have listened to each other with valuable results.



FRIENDS OF THE KEY PENINSULA LIBRARY

The Friends of the Key-Pen Library are presenting the first speaker of their lecture series on October 15 at 8:00 PM in the VFW room.

The featured speaker will be Ron Manheimer from Pierce County Library. Dr. Manheimer is a philosopher who is presently the coordinator for the Humanities programs of the Pierce County Library system.

The topic of his speech will be "Local History...Let's Create It On The Spot". This innovative program ought to be of interest to all ages and we encourage everyone to come. Cookies and coffee will be served.

The Friends of the Key Peninsula Library are now meeting every month at the library presently located in the Civic Center. Meeting night is the third Wednesday of the month at 8:00 PM.

It is hoped in the future that guest speakers will be presented at some of the meetings.

At the September meeting Michael A. Cina, associate of John V. Austin, Architects, presented plans of the library-health clinic and also a sketch of the exterior of the new building. He was able to answer the questions asked by those present.



P.O. Box 82 Vaughn, WA. 98394

PUBLISHER

Key Peninsula Civic Center
Caretakers, Ernie & Ruby Rouse
884-3456

CO-EDITORS

Pat Greetham, Jeanne Sagle

COPY EDITOR

Ila Fogle, Mary Cole

ADVERTISING & SUBSCRIPTIONS

Thelma Klein

ADVERTISING LAYOUT

Marlyce Viers, Bob Schottland

COPY LAYOUT

Mary Cole, Jan Rogers, Carol Foster

TYPISTS

Kay Beck, Pat Hunter, Jeanne Sagle

BILLING

Jean Humphreys (Mrs. Hugh)

CIRCULATION

Avis Whitfield, Carl Breitsprecher

The Key Peninsula Newsletter is published monthly by the Key Peninsula Civic Center as a community service and Board project. It is staffed by volunteers and solicits news of general interest to the community.

Buy a subscription for your friends, relatives or ex-neighbors, \$3 per year, mailed to them. Send your order WITH PAYMENT to: Key Peninsula Newsletter, P.O. Box 82, Vaughn, WA. 98394.

Name _____

Address _____

City _____ Zip _____

(Bill to, if different from above:)

OUR ANNIVERSARY

Some may think it's a monotonous life
Living forty years as husband and
wife.
Ours were years of love and trust
sincere,
For our wedding vows we still hold
dear.
We've worked and played, laughed and
cried,
Tried to be honest, we seldom have
lied.
In Civic affairs we have done our
bit,
And voted regularly as we deemed
fit.
Thank God for blessings on us
bestowed,
For health and humility along life's
road.
We'll live future days as we have
the past,
Slowing up a trifle as we near the
last.
We want no gifts or golden purse,
Just share our joys as you read
this verse.
George K. Larson - Pearl C. Larson
Observing

1940-1980 October 19th

NEWSLETTER CONTRIBUTORS

Our thanks to those who have contributed to make it possible for us to have a Newsletter. Those who have made a donation since January are as follows:

R.G. Ferguson	M/M Robert Fields
Nartha Morey	Keith Seavy
Barbara Granlund	M/M Roy Madsen
Carol Foster	R.W. Drowley
M/M Jack Thompson	Walt Schmidt
M/M J.A. Brennan	Phil Radcliff
Earle Knapp	Mildred Jones
Bea Pruski	M/M Edward Wagner
Capt. R. Warner	Donald Lowery
M/M Sheldon Plumer	M/M Cecil Paul
Richard Humphrey	Violet Visell
David Olson	Pauline Nelson
Donald Wolniewicz	Mrs. James Scolman
Kt.Col.Wm. Lemp	Olive Williams
Frank Stencil	Jim Paul
John Schmit	Mrs. John Conboy
Marie Dodge	Helen Soderquist
M/M Bob Johnson	M/M James McGowan

Friends such as these are most appreciated by all in the community. If we have missed any names, please let us know as it is possible that some slips might have been misplaced.

NEW SKATING SCHEDULE

1ST SESSION - 3RD GRADE & UNDER
2ND SESSION - 3RD GRADE TO 6TH GRADE
3RD SESSION - 7TH GRADE TO ADULTS
HOURS: 1ST SESSION - 7 TO 9 P.M.
2ND SESSION - 7 TO 9 P.M.
3RD SESSION - 9:30 TO 11:30PM
COST: 1ST & 2ND SESSIONS
\$1.25 WITHOUT SKATES
.75 WITH SKATES
3RD SESSION
\$1.75 WITHOUT SKATES
\$1.25 WITH SKATES

Your Prez Sez

YOUR PREZ SEZ

Many important events will take place these next several weeks. First and foremost will be listening to many political candidates and choosing for whom we wish to vote. We will have a unique opportunity on October 2nd at 7:30 PM when we will have a candidates' night here at the Civic Center. You will hear a short talk on what the candidates consider the most important issues and then can ask questions and discuss with them your ideas. These people will be making the laws which will affect our way of life. Both state representatives and national representative candidates have been invited. At this writing, we have not heard how many will be able to attend. When you see these people on TV you can't talk back, but now you can! Be sure to come.

There has been much discussion about land use planning on our Peninsula, both pro and con. At our next Board meeting we will decide whether to sponsor an open meeting on this subject, so that all sides can be heard. Since this is such a controversial issue, all the Board members will wish to make their votes count in this decision. The Land Use Committee has reserved a room and is even willing to pay for the use of the Center but the Board will make the final decision.

The Nominating committee is again seeking candidates to serve on the Civic Center Board. If they call, please make every effort to include this important activity in your schedule. It is only with dedicated volunteers that the Civic Center is able to operate.

From now through the winter season the Center is especially busy and it is necessary to follow some close scheduling. Those who use the Center can help by keeping the heat and lights at as low a level as feasible so that our expenses can be kept at a minimum. We thank you for your cooperation.

FLEA MARKET

The Key Peninsula Civic Center annual Flea Market will be held on Saturday, October 4th from 10:00 AM to 4:00 PM.

There will be many bargains in childrens' clothing and toys, household items, furniture, dishes, decorative and craft items as well as antiques. Food will be available.

To reserve a booth call Edyth Johnson at 884-2362 or Alice Palmer at 884-3882. Booths are \$5.00 each.

F BUS SERVICE FOR KEY PENINSULA

An editorial.....

WHO CARES?

Who's it going to be in November? The Democrats? The Republicans? The Independents? The Libertarians? The Communists or the Socialists? As the campaigns heat up and down the country, it seems that many voters are not happy with ANY of the candidates and plan to STAY HOME!

This seems to be a typical "cop-out" for American voters. It goes back to the old traditions of "I want to be a winner" or "I won't play unless I'm on the winning team!" We have certainly come full circle in adhering to our heritage of freedom, liberty and honoring human rights.

It is imperative to the success and continuance of our form of government to seriously consider the consequences of making the decision NOT TO VOTE this November. In effect, each citizen who stays home, is actually saying, "I don't care who runs the government," "They're all no good," "My vote won't make any difference" or "There's nobody to vote for!"

Stop for just a moment and think of the many jobs, services and projects which National, State and local governments provide. The latest census indicates that one in every five people works for some form of government agency. These people certainly have a vested interest in their future and need to consider carefully whether they want to continue in their present position and need to get out the vote.

We can all be sure of one significant fact--whether you vote or not on November 4, someone will be elected President, Governor, Senator and Representative from our district. Then just as typically, our American PUBLIC will be on their soap boxes the very next day criticizing these elected officials.

Let's think about the privilege our founding fathers guaranteed us in the beginning of this great country--a guarantee which is good for our entire lives--the right to vote! Leave your mark on the future--put your mark on a ballot!

On Thursday, September 4th, Pierce Transit held a public meeting at the Gig Harbor Town Hall to gather community input concerning the feasibility and desirability of expanding the transit system across the Narrows Bridge. This was the last of several public meetings collecting citizen comments and recommendations on transit services. The meeting was conducted by Mary Jo Porter and Dan Riley of the Pierce Transit system. Following a presentation of the plans for service within the Tacoma city limits, brainstorming sessions were conducted in small groups to elicit individual comments and recommendations. The meeting, which was attended by approximately 60 people, provided time to work in groups of ten for one hour.

Key Peninsula residents were well represented at the meeting and eagerly participated in the brainstorming sessions. In fact, after each group prioritized their ideas, in almost every case, the item of highest priority was to establish some type of service to the Key Peninsula from Longbranch to Purdy/Gig Harbor/Tacoma on a regularly scheduled basis. This initiated many questions on the type of services available.

Dan Riley outlined that services by Pierce Transit were of many types: First, the greatest amount of service is provided on a regularly scheduled bus run with designated stops; second, special buses are often run where 30 people or more meet the bus on a reservation basis; third, van pools are frequently used in outlying areas where one member of the van pool of up to ten individuals, is responsible for driving and caring for the vehicle; and fourth, the roving van concept is one in which persons desiring service, call one day before and indicate their intended destination and time. Requests are then pooled and a van is scheduled.

Vans are primarily used as market analyzers and on an experimental basis. Because federal funding is available for the purchase of equipment, vans are not as efficient as full sized buses and full service is the most cost efficient method of delivery as soon as the need is justified. Finances were also discussed by Dan Riley who reported that fares only cover about 33 to 40 percent of actual costs with the remainder being funded by a slight increase in sales tax. He pointed out that if shoppers are spending dollars within the Tacoma city limits, they are already being taxed for the transit system. He indicated that this amounts to taxation without representation.


Many different impressions and rumors have circulated concerning when service could be initiated to the Key Peninsula. Although some articles have reported that service may be several years away, the group leaders stated that this was not the case. For example, Gig Harbor will have the opportunity to vote on whether they wish inclusion in the system on this Fall's ballot. If interest is shown in areas south to Longbranch, this issue could be placed on the Spring ballot and service plans begun immediately thereafter. Approval would take a simple 50% majority of those voting. These facts were encouraging and Key Peninsula residents were enthusiastic about the possibility of receiving full service in the near future.

In order to continue planning for service to the Key Peninsula, Mary Jo Porter relayed that there needs to be some level of interest and inquiry. This can be an informal phone call or letter simply stating your name and expressed interest to receive service. Mary Jo can be reached at her Pierce Transit office phone 593-4525. It's up to us, Key Peninsula residents. Give Mary Jo a call, leave your name, and let's plan to ride the bus.

KEY PENINSULA SENIOR SOCIETY CALENDAR OF EVENTS FOR OCTOBER

- 2nd - FREE LUNCH. Eleanor Stock speaking on "Seed Preservation".
- 9th - POTLUCK
- 16th - POTLUCK & ELECTION OF OFFICERS
- 23rd - POTLUCK
- 30th - POTLUCK

**Vaughn
Community
Church**



The Chapel By The Sea
Worship With Us!

SUNDAY -
EVENING SERVICE
6:30 P.M.
SUNDAY SERVICE
9:30 AND 11:00 AM

DICK BAUER, PASTOR
884-2269
NURSERY CARE PROVIDED...

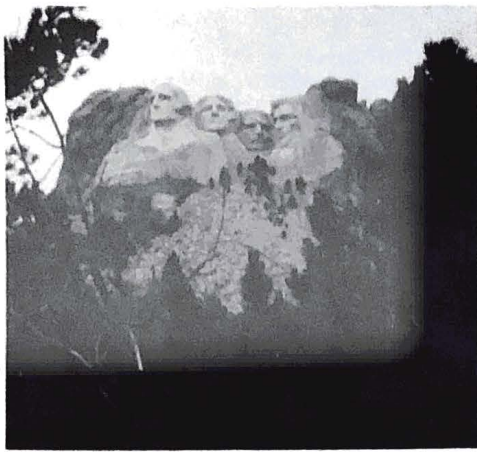
KEY PENINSULA SPORTS CENTER
Concession Stand
HOT & COLD
FOOD AND BEVERAGE
NOW OPEN!

Weekdays: 3:00 p.m. - 10:00 p.m.

Weekends and on Tournament Days:

5:30 a.m. - 10:00 p.m.

Vee Cornell, Manager



THE PINTER FAMILY'S VIEW OF MT. RUSHMORE

HEARTLAND OF AMERICA TRIP

Larry and Kay Pinter, of Vaughn and their two children Andrea 12, and Toni 8, took a month long trip to the "Heartland of America" this summer.

Their destination was Minnesota and family there, but also they went through Idaho, North Dakota, Wisconsin, Illinois, Missouri, Arkansas, Tennessee and Kentucky. The following is an excerpt from one of Kay's letters to friends at home.

"We went much further south than planned. When in southern Illinois at Larry's relatives, I saw a sign that said "Memphis - 229 miles"

Well, needless to say, when this Elvis fan found herself so close to Graceland, nothing could keep me away. So that was a 2 day side trip. It's beautiful there, but sad too.

Traveling through southern Illinois, we found a "drawl liné" - everyone started talking with a southern accent and everyone is so s--l--o--w. In Tennessee and Arkansas everyone talks, walks and moves in slow motion. I can see why the South lost the war - no offense to our southern friends!

We saw the Dells of Wisconsin, "Great America" in Illinois, the wheat, corn and sunflower fields of Minnesota, steel mills as far as the eye could see, a coal mine, automobile plants, hologram, a dinosaur skeleton, art museums with the works of Van Gogh, Monet and Picasso, the "Great Bronze Display of China" with pieces of art dating 2,000 years before Christ, the cotton and soybean fields of the south, and the top of the tallest building in the world - the Sears Tower in Chicago. The list could go on and on.

When you hear "Big Sky Country of Montana", "The Midwest Is the Breadbasket of the World", "Industry Is the Backbone of our Country", and the "Heartland of America" and "Southern Hospitality Is the Greatest", it may sound corny but it is all really true.

The sights of this country can boggle the mind. This trip has made us all realize how lucky we are."

V.F.W. AUXILIARY

The Lakebay V.F.W. Auxiliary to Post #4990 will hold its regular meeting at Vaughns Key Peninsula Civic Center, October 13th at 8:00 PM. The meeting will be held in the Gold Room.

We will have the honor of our 4th District President, Donna Bruce making her official visit to our Auxiliary at this meeting. It is our wish that all V.F.W. members attend this meeting as she will give us many new ideas in which to improve our Auxiliary.

After the meeting, refreshments will be served. All Post members are invited to join us in the refreshments.

ORTHOPEDIC GUILD

The October meeting of the Dr. Penrose Orthopedic Guild will be held October 9th at the Minterbrook home of Mrs. Harry Middleton. Mrs. Dominic Marietta will be co-hostess for the noon luncheon.

BAYSHORE GARDEN CLUB

The Bayshore Garden Club meets on the third Friday each month at 1:00 PM at the Fellowship Hall at the Longbranch Church. Their theme for 1980-81 is the Growing and Use of Herbs.

On October 17th Edith Pinder will talk on herbs used in cooking. The flower themes for the month are: Pumpkin Time and Country Time.

The hostesses are Jackie Jopp and Silvia Larson. Following the meeting will be a plant sale. If you would be interested, please come.

KEY PENINSULA SPORTSMEN'S CLUB CALENDAR OF EVENTS

- Oct. 4-Card Party, 7:30 PM
- Oct. 9-Regular Meeting & Dinner
6:30 PM
- Oct. 12-Social Sunday, 1:00 PM
- Oct. 24-Potluck Dinner & Game Nite
6:30 PM

Norman J. Collins, D.C.

ANNOUNCES THE OPENING OF HIS

CHIROPRACTIC PRACTICE

AT THE

K.C. CORRAL

HOURS: MONDAY - WEDNESDAY - FRIDAY

10:00AM - 6:00 PM

PHONE 884-3040

NUTRITION

Adults are invited to participate in the luncheons prepared by them under the guidance of Anne Engelsen of the Clover Park Vocational School. The lunches are at the Longbranch Church at noon on the 2nd and 4th Tuesdays every month. Menu for October 14th: Corn Beef Dish, Ginger Ale Salad, and Spice Cake. On October 23rd: Chicken Macaroni, Cauliflower salad, and Ginger Bread. If you would like to join the two hour fellowship, call Margaurite Bussard at 884-3771, Mary Kittleson, 884-3219, or Jean Humphreys at 884-3716 for more information.

GRANGE

Upper Sound Grange Booster Night will be Friday, October 17th. Dinner will be at 6:30 PM in the Gold Room. The meat, rolls and cake will be furnished; the rest of the dinner will be pot-luck.

A program will follow dinner in the gym. The Worthy Lecturer has promised some surprises. There will also be a produce and baked goods auction.

Grange Booster Night is an open meeting for all members, their friends and non-members who wish to learn about the Grange organization. We urge all to attend.

The next regular business meeting will be Friday, October 3rd at 8:00 PM preceded by potluck at 6:30 PM.

T HANKS FOR HELP---

To all those who helped me at the Concession Stand on Pioneer Day, I would like to say thank you. You all did a great job. Sally Cornman

 **OLYMPIC
WEST
drilling inc.**

STATE LICENSED

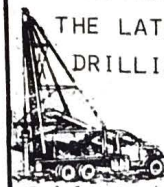
858-7226 GIG HARBOR

SPECIALIZING

IN SINGLE FAMILY
AND
COMMUNITY WATER WELLS

FEATURING

THE LATEST IN MODERN
DRILLING EQUIPMENT



Cable Drill

Air Rotary

FREE ESTIMATES

HOME OF THE MONTH

Rocky Bay has been honored as "Home of the Month" by DARE (Diversified Activity Recreation Enterprises) a volunteer charitable group from Tacoma. The Home received a Certificate of Recognition and a Polaroid camera.

Selection was based on the following criteria: Rocky Bay's Activity Director's interest and involvement in DARE programs; the Home's interest in improving existing activity programs and resident welfare through continuing education and/or DARE workshops; the Home's participation and involvement in special DARE and Community sponsored events.

Paul Tobie, Rocky Bay Activity Director, is the staff representative who arranges for DARE programs at Rocky Bay and accepted the Certificate for the Home.

Attending the award ceremony were many friends and volunteers who work with the residents. The Pennant Cootiettes served punch and cookies. John and Jane Robinett provided musical entertainment.

For those new to the community, Rocky Bay is a home for 30 retarded adults from ages 21 to 62. It is not a nursing home because the residents are not ill, only handicapped. They are able to care for themselves with 24 hour supervision from rotating staff of RNs, LPNs, training aides and recreation directors. When needed, they have the consulting services of a doctor, occupational and speech therapists, and recreation director.

Rocky Bay's staff are not merely caretakers but trainers for the residents. They teach the residents as many self-help skills as possible. They receive additional special training in survival skills at an adult school in Tacoma on 6th and Orchard, skills like traffic precautions, etc.

Most of the residents were raised in institutions. It was to their advantage to have a place like Rocky Bay to move to with a more home-like setting and individualized care.

Many community groups and individuals make their stay at Rocky Bay more interesting and meaningful with visits, music, church, birthday and holiday parties and gifts, outings, etc. They are: Cootiettes, VFW Auxiliary, Allyn Baptist Church, Vaughn Church, Peninsula Lutheran Church, Elks, Minter Ladies Club, Cake Club, Bothwell's 4-H and Scout groups, Garden Clubs, Wilma Rodman's Sunday School program.

Anyone in the community is welcome to visit Rocky Bay. In fact, some of the residents would love to have friends who would stop by to see them since they often have no family connections.



ART LEAGUE

Plans are being made to form an Art League in the Key Peninsula-Gig Harbor area. A league would be beneficial to the accomplished artists and to those wishing to develop their techniques. The league would also make plans to sponsor two or more shows yearly, if possible.

All artists, working with original arts and crafts are urged to attend a kick-off meeting on Oct. 13, 1980 at 7:30 PM in the Vaughn Civic Center, VFW Room.

We need you at this meeting if you are to go on with the plans. If you are interested but cannot be at the meeting or if you want to help or need more information, call Kathy Best at 884-2335 or Penny Zimmerman at 884-3675.



MRS. MIMI BAKKE OF "DARE" AWARDS

PAUL TOBIE, ROCKY BAY ACTIVITY DIRECTOR, THE CERTIFICATE FOR HOME-OF-THE-MONTH.

11% = 10 1/2 %

TAX-DEFERRED INTEREST SAVINGS

11% — \$1,000.00
Minimum Investment

10 1/2 % — \$25.00
Monthly Minimum Investment

Tax Deferred means NO TAXES paid on interest while earning — Giving you an important advantage — compounding of interest on 100% of interest earned — not just on what is left over after taxes.

NO MAXIMUM

A savings program designed to fit everyone's needs.

SAFETY—LIQUIDITY PROBATE-FREE

FOR INFORMATION CALL
Jay L. Tenge

Lake of the Woods
582-3100 Days Radio Page 572-3222
U.L.I.

Western Washington Regional Office
Tacoma, Washington
Subsidiary of Metropolitan Mortgage & Securities Co.

Key Peninsula Lutheran Church



REV. ED WAGNER
CIVIC CENTER - VAUGHN

SUNDAY SCHOOL: 9:30 a.m.
WORSHIP SERVICE: 10:30 a.m.

- COAL -

\$5.00 Sack

MORE HEAT FOR LESS MONEY
Key Center Trading Post

7 MILES WEST OF PURDY
ON HWY. 302 IN KEY CENTER

884-2220



CHRISTMAS DECOR ITEMS
NOW AVAILABLE!



Sherman's Arts & Crafts

884-2454

GIG HARBOR-LONGBRANCH HWY.
LAKEBAY, WA. 98349

LONGBRANCH CHURCH

The new Minister for the Longbranch Community Church is the Rev. Marshall J. Ellis. He will conduct regular Sunday services at 11 AM on Sundays and will be in the community one day a week for pastoral duties; visiting and teaching.

Mr. Ellis and his family reside in Gig Harbor. Their home is near Point Fosdick. His wife Mary is active as Youth Choir Director at St. John's Episcopal Church in Gig Harbor. His son, Marsh, is on a Forestry assignment in the Job Corps, stationed in Oregon. His daughter is an 8th grader at Goodman.

Mr. Ellis has been the Chaplain of Annie Wright School in Tacoma for the past four years. He has also served as rector of three parishes in western Washington; in Tacoma, Bellevue, and Enumclaw.

He began his ministry as a Navy Chaplain and served two years in Seattle and in Japan at the close of World War II.

Mr. Ellis is a native of Macon, Georgia and was educated at the University of the South, Sewanee, Tennessee. His preparation for the ministry was at the Union Theological Seminary in New York City, where he graduated in 1944. He is also interested in books and research and is a graduate of the University of Washington School of Librarianship. He served as assistant Librarian at the Enumclaw High School while also being vicar of the Episcopal Church there.

The Ellises are all horseback riders and have been active in 4-H. With the members of the Longbranch Church, Mr. Ellis extends a warm welcome to Sunday worship. The services stress biblical preaching and teaching, beautiful music, and rich fellowship and the abundant life which is found in Christ.

NEW CHIROPRACTOR'S OFFICE OPENS

A new Chiropractor is now practicing in Key Center Corral. He is Dr. Norman J. Collins taking Dr. Jerry Torrence's place while he recuperates. They are in partnership. Dr. Collins will be in the office Mondays, Wednesdays, and Fridays from 10:00 AM to 6:00 PM.

He is from South Carolina, a Navy veteran and a member of the Disabled Vets. He went to the University of South Carolina after the service and to Palmer Chiropractic School with Dr. Torrence. Both men interned at the Pettibone Chiropractic Clinic in Tacoma.

He moved to Port Orchard and started a practice there in June 1974. He keeps current in his field with conferences and new materials. He can be reached at 884-3040 at the above hours.

HOME STILL HOME

The Board of Geographic names met at the Washington State Historical Museum in Tacoma on September 12th and announced that Home will remain at the head of Von Geldern Cove and Lakebay at the head of Mayo Cove. The meeting was chaired by Land Commissioner, Bert Cole.

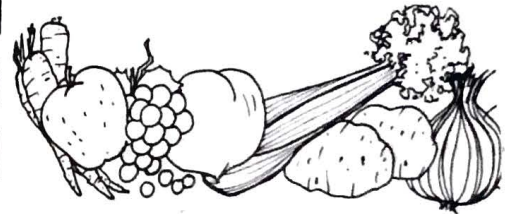
In spite of the fact that the name of Home has been deleted from the new Washington State maps, it can be reinstated and will remain the official name of the "town", being the largest on the Key Peninsula.

The name of the peninsula was brought up and the representatives from this area said that it had been called Key Peninsula since the 1940's when Gene Stone of Lakebay won a contest for naming our peninsula. The Board of Geographic Names will give a decision at their December meeting. Those persons from this area at the meeting strongly recommended that the name of Key Peninsula continue to be used.

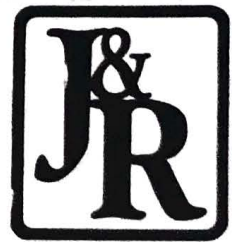
The meeting was well attended with people from Home, Lakebay, Seattle and Tacoma who were vitally interested in seeing that the name of Home be retained.

**FOR A BETTER AMERICA
... BE INFORMED... AND**

VOTE



YOU CAN REGISTER AT THE KEY PENINSULA LIBRARY AT VAUGHN DURING LIBRARY HOURS FOR THE NOVEMBER ELECTIONS.



**JACKSON &
ROBINSON
Law Offices**

10% DISCOUNT TO
SENIOR CITIZENS

(206) 851-5126

3620 GRANDVIEW STREET
GIG HARBOR, WA, 98335

HOURS: Monday thru Friday
10 a.m. to 6 p.m.

H'mmm-I'm just sure I have a copy of that new book on the digestive enzymes of the Aquarian Tadpole somewhere up here!!!

OVER 150 TITLES NOW AVAILABLE -
FROM HERBAL APHRODISIACS TO THE CONFESSIONS OF A SNEAKY ORGANIC COOK.

OCTOBER SPECIAL -
BASIC ORGANIC - Vit. E \$.50 OFF ON ANY BOTTLE

*Teddy's
Country Health Foods*

LOCATED IN THE K.C. CORRAL 884-3977

**GIG HARBOR TWIRLERS
GIVE LESSONS**

Plans are being finalized for beginning square dance lessons to be given on Monday nights starting October 6th. Sponsored by the Gig Harbor Twirlers, the lessons begin at 7:00 PM and go till 9:00 PM.

The first lesson is given at no charge, and for the first three weeks, classes will be open to new students, after which, registration will be closed. Lessons will be given at the Burley Hall located next to the Post Office in Burley. The club caller and teacher is Bill States who has taught the joys of square dancing in several parts of the world and is in his third year of teaching in the Gig Harbor area. Bill has the knack of making learning a "fun experience" as is evidenced by his enthusiastic dancer-supporters. Even though the club meets only once monthly, it is getting to be known in the area as an "active" club. Special dances, lessons, campouts, costume dances and rounds are only a part of their activities.

A recent visitation to another club some 30 miles away was shared by 32 club members.

For additional information, call 876-2703, 857-4591, or 858-2173.

HISTORICAL SOCIETY

The Key Peninsula Historical Society will hold its next meeting on Thursday, October 23rd at 7:30 PM in the Civic Center VFW room.

The guest speaker will be Floyd Oles of Tacoma. He is an old time resident of Vaughn/Glen Cove and will show photographs of his childhood there. Visitors are welcome to this most interesting program.

SQUARE DANCING

Skirts-N-Flirts Square Dance Club of Vaughn began their new beginners lessons on September 15. We had a good turnout. These lessons closed on September 29th to new students. From now on instruction will move rapidly until graduation in spring.

The club dance on the 20th was the first with the new feature of the "Teen Corner" where teens and their guests can whoop and holler and have a good time. They had guests from Tacomas' Raggedy Anns and Andys, Poulsbo Whirlaways, and Bremertons' Russell's Rustlers.

We had an official visitation from the new club in Belfair, the Square Aways and their caller Harry Bayliffe and one of their teen members Vernon Buck called a tip. Also calling a tip were our own members Dale Van Slyke and new member Virgil Forbes.

Our own caller, John Beck, threw many new things at us one of which was a Contra.

At 7:00 PM on Mondays just before Square Dance lessons, Callers' Taw, Kay, is teaching Round Dancing. These lessons are free to Federated Club members.

KARATE SCHOOL TO OPEN

Todd Overby's Isshinryu Karate School will open at the Key Peninsula Civic Center on Tuesday, October 14th. Classes will be held from 6:00 PM to 7:30 PM each Tuesday and Thursday for students 14 years of age and over, male and female. The fee is \$30.00 a month.

"The scope of instruction includes physical conditioning, mental and spiritual development, self-awareness, sportsmanship and of course self-defense. If your sights are set to learn only a few fighting techniques, this school is not for you; Karate is a discipline, not a get-tough-quick scheme. But if instead you're looking to better your physical self as well as your self-image, if you want to be faster and more agile and have the stamina it takes to get there...then we'll see you there. Visitors are welcome always."

For more information call Todd Overby at 884-3521.

ITEMS LEFT ON PIONEER DAY!

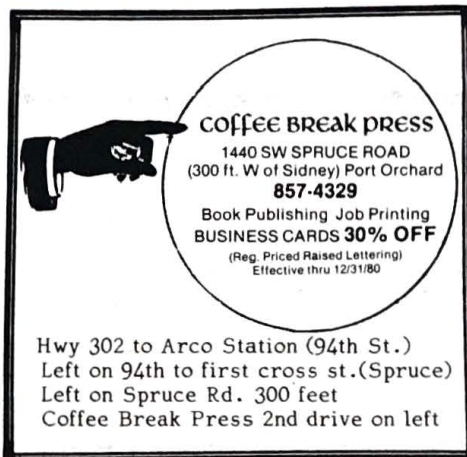
There are still some borrowed electric roasters and some of the inserts for them at the Center. Check your home to make sure that the roaster you loaned is now back and that it is complete. If you need to pick yours up, call the caretaker and have him help you find yours.

Ribbons are here for Tina Jaggi, Bertha Sherack and Normal Stencil. Check with the caretaker to claim them.

PENINSULA SOCIAL CLUB

This is a large active group from Home which meets at the Long-branch Church Fellowship Hall.

A potluck Dinner and meeting will be held at 6:00 PM on Monday, October 13th. For further information call 884-2351 or 884-3870.



COFFEE BREAK PRESS
1440 SW SPRUCE ROAD
(300 ft. W of Sidney) Port Orchard
857-4329
Book Publishing Job Printing
BUSINESS CARDS 30% OFF
(Reg. Priced Raised Lettering)
Effective thru 12/31/80

Hwy 302 to Arco Station (94th St.)
Left on 94th to first cross st. (Spruce)
Left on Spruce Rd. 300 feet
Coffee Break Press 2nd drive on left

7110 6th Avenue
Phone 564-6471

Highland
Dry Cleaning-Laundry
Alterations-Repairs

Bob & Trudy Jones

Pete's Auto Repair

"WHERE SATISFACTION IS A MUST"
DAYS: MON. THRU FRI. - 8 TO 5
VISA AND MASTER CHARGE CARDS ARE
WELCOMED!

884-3124

IN DOWNTOWN KEY CENTER

MARCIA'S STYLING SALON

K. C. CORRAL 884-2479
MON-SAT. 9-6 WED. EVE by APPT.

**Perm
Special -**



REG. 36.00 NOW - 30.00

HAIR CUT AND STYLE INCLUDED

OCTOBER 1 THRU THE 18



**BUTTONS
AND
BOWS**

K. C. CORRAL
Key Center
884-3971

BUGHT ANOTHER FABRIC
STORE'S INVENTORY

COME SEE OUR NEW
FABRICS AND TRIMS---

PIERCE COUNTY LIBRARY

The Pierce County Library Board of Trustees met September 4 in special session to discuss library construction projects now being planned.

A construction bid was accepted for the first phase of the combined library and health center project at Key Center. Robinson Construction Company of Bremerton was awarded the contract to build the library portion of the facility beginning in early October. Total cost of the first phase is estimated at \$300,000 including planning, site preparation, and construction. The health center will be built during phase two of the project.

The new 4000 square foot library, which will replace the present 800 square foot branch at Vaughn, is projected to be operational next summer.

continued from page 1

Even now, while you read this, somewhere on the Key Peninsula, someone's home is being burglarized or vandalized, another crop of marijuana is being harvested, perhaps a child is being molested or an elderly person is being beaten or harassed. Law enforcement cannot be a "part timejob" or a "do it yourself" project. The Key Peninsula needs and deserves to have 24-hour protection for its citizens and businesses. Lack of funds is always the story.

In May of this year an attempt was made to locate District Court #2 and a Radio Dispatched Pierce County Sheriff Precinct Station on the Key Peninsula - rent free for two years with no strings attached. The offer was rejected by the County Commissioners and District Court #2 Judge. With elections in November,

citizens of the Key Peninsula have another chance to be heard. Meet your candidates face to face October 23rd. Let them know what is happening on the Key Peninsula.

Invited to the meeting are Commissioners: Bujacich, Stortini and Gallagher and opponents Bingham and Vraves as well as State Representatives for the 26th District: Dawson, State Senator Callaghan and Granlund and opponents Hanna and Luce.

Also invited are three members of the Pierce County Sheriffs Department: Sheriff Lyle Smith, Sgt. Ralph Dybdahl and Tom Click, President of Pierce County Deputy Sheriffs Association.

These officials will be asked to listen and listen well to what the citizens of the Key Peninsula have to say. Time will be reserved for the officials to answer.

A large turnout will show officials that the citizens of the Key Peninsula are serious in their demands. Come to the meeting and bring your neighbor. It's IMPORTANT!

DEFENSIVE DRIVING CLASS

A defensive driving class is planned for the near future, if there are enough interested people. Anyone 55 years of age or older can take the class. The class will be for 2 consecutive days.

This is a special class for older drivers on updating driving techniques, rules of the road and hidden hazards among other things connected with operating a vehicle.

The instructors are furnished by NRTA-AARP. There will be a \$3.00 fee for NRTA-AARP members and \$5.00 for others.

Some insurance companies will give a discount on automobile insurance to those who have completed the class.

For further information call Aubrey Franklin at 884-2486.

THANK YOU

We are thanking everyone that helped with the Firefighter's Ball on August 23rd including food and decorations. Also, a big Thank You to the merchants in the district for their donations of prizes that made the Ball a great success.

PENINSULA NEIGHBORS

Peninsula neighbors welcome new members to participate in crafts and fellowship on the 2nd Wednesday of the month at the Longbranch Fellowship Hall at 10:30 AM. Bring a sandwich and join in exchange of craft creations.

RUMMAGE SALE

The Ashes will have a sale on October 11th at 10:00 AM to 4:00 PM at the Key Center Fire Station #2.

If you have rummage please call Station #2, 884-3811, for pickup or Marguerite Bussard at 884-3771.

**PROPANE
CONVERSIONS
DISCOUNT PRICES
IN EFFECT NOW**

Open - Oct. 6

SAVE ON FUEL COSTS!
SAVE UP TO 260% ON OIL!
IMPROVE SPARK PLUG LIFE 300%
ENGINE WILL LAST 2 & 3 TIMES LONGER!

**PHONE 857-7361
for appointment**

**KEHLER
KONVERSIONS**

I'm just sure I have of that new book on 'stive enzymes of xian Tadpole some- here!!!

IS NOW AVAILABLE -
NFESSIONS OF A SNEAKY ORGANIC COOK.

BER SPECIAL -
ANIC - Vit. E \$.50 OFF ON ANY BOTTLE

*dy's
fealth Foods*

884-3977

TANT!

e for Better Law Enforcement

to a **ll Meeting**

23 - 7:30p. m.

CENTER, VAUGHN, WA.

ENFORCEMENT ON THE

NT AND COUNTY COMMISSIONERS



GHÖST TOWN

Behold, a living prophet! The August, 1980 Ponderings ended with the line, "one by one, all will be lost unless local pride keeps a weather eye open," referring to our small Peninsula town names.

We received the latest Official Washington State Highway Map and Guide Sept. 4. Imagine our dismay to find the town of Home totally eliminated, with Lakebay placed near the head of Von Geldern Cove. Even the 1967 State map found room for Home. As far as this new map is concerned, Home does not exist. One thing is certain; dead or alive she will rise again, and some interesting things continue to happen, even in a dead town.

On the night of July 4, about 11:30 PM, visitors from Home, (cold sober) observed a black bear crossing the Narrows Bridge, from East to West, carrying a large salmon in its mouth. Would anyone have an idea where the bear got that salmon?

A nearby resident is expert at sharpening tools. He whetted his axe to a razor edge and beheaded a chicken, dropping the flapping fowl and its head in the chicken, with head perfectly attached, going about its business as usual. Apparently the neatly severed neck just happened to perfectly align its vital parts again, which takes a very sharp axe.

Then there was that tugboat and scow in the bay the weekend including July 20. An oldtimer said he remembered the Bee was built in 1901. Another old tugboater said he had applied for a deckhand job on her 53 years ago. She is a survivor of the "stinger" fleet consisting of the Bee, the Wasp, and the Hornet. Her purpose here was to offload a small building being moved from a waterside area to another location. It was a thrill to see the ancient tug again, and brought back memories of the days when the sound was alive with such boats.

A few nights ago, we watched the old time tug boat race near Olympia on T.V. Lo and behold, there was the Bee, pushing a bow wave like an ocean breaker.

So much for happenings in the ex town of Home.

LITTLE BY LITTLE

It's mushroom season! What a wonderful way to spend these glorious fall days - tramping through the woods - crawling through, over and under salal and huckleberry brush in search of those golden nuggets. I'm talking about chanterelles which are about the only mushrooms I get and are the kind I like best. There are many white chanterelles this year too. I predict a bumper crop this season. Our peninsula is a good place for many varieties of mushroom so get busy and find your own secret spot and freeze all that you can't eat fresh.

Each year logging or developments of one kind or another are usurping many of the prize spots for mushrooms. In time our peninsula is going to be covered with buildings and highways which will be the end of our banquet nature has lavishly furnished us for years - mushrooms, huckleberries, blackberries, etc. We've seen the disappearance of much of our shore life; oysters and clams, so plentiful just a few years ago, are disappearing fast.

In answer to those of our readers who called me about the article in the Tacoma News Tribune suggesting that the millions of dollars it is going to take to repair Three Mile Island Nuclear Plant could be handled nicely if each user of electricity in the United States would pay 12¢ additional on their light bill each month for the next seven years. No hardship on anyone and just think how much it would save the owners of TMI! Wow!

Well, you can guess what I think of that suggestion. (Unprintable in a respectable paper like this.) I do think it would be fair and proper if all those who have been pushing for nuclear power plants could be taxed to pay the \$7 million minimum estimate of the cost to get the plant repaired.
7110 6th Avenue
Phone 564-6471

Highland Dry Cleaning-Laundry
Alterations-Repairs

Bob & Trudy Jones

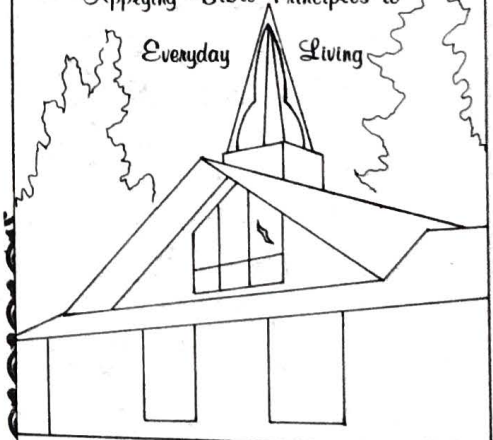
Pete's Auto Repair
"WHERE SATISFACTION IS A MUST"
DAYS: MON. THRU FRI. - 8 TO 5
VISA AND MASTER CHARGE CARDS ARE WELCOMED!
884-3124
IN DOWNTOWN KEY CENTER

Recently when I watched Pass-word (what else?) on TV I noticed there's a new product for all suckers who keep these companies in business by buying any silly thing they see advertised. I don't remember the name of the product but it's some concoction "to help the poor housewife solve the problem of that terrible mess that soap makes in your home". Soap is a problem for the housewife??? That's what they said. So some bright (?) person dreams up this idea of taking a tiny dab of soap, adding a lot of water, putting it in a fancy plastic container, (made of oil and other resources that we should be conserving) with, I'll wager, some new-fangled gadget for squirting that is safe to have around children and impossible for adults to use and last, the most important step, selling it at a fancy price - making a nice profit. I must have a suspicious mind but what other reason could there be for making such a ridiculous product?



Lakebay Community Church

Applying Bible Principles to
Everyday Living



SUNDAY SCHOOL 9:45 AM...NURSERY CARE
SUNDAY WORSHIP 11:00 AM OTHER SERVICES
and 6:30 PM FOR YOUTH and ADULT

ONE MILE SOUTH OF HOME...Phone 884-3899
PASTOR VERNON WIGGERS 884-2395

KEY CENTER DRUG

YOUR OWN MINI — SUPER DRUG

**SAVE GAS, and TIME,
and SAVE MONEY —
SHOP LOCALLY**

**PHONE 884-4144
884-4145**

**OUR FIRST ANNIVERSARY AS YOUR NEIGHBOR —
We are glad to introduce a new line of quality vitamins to go
with our national brands and velocity and nature-made.
Now we bring REXALL VITAMINS to you with these special
prices for October.**

Keynotes

The Key Peninsula Library at the Civic Center in Vaughn is now accepting registrations for the November election during library hours: Mondays 1-5,6-9, Tuesdays 1-5, Thursdays,1-5,6-9.

Congratulations to Pam Coburn Stocking and family. She has a daughter, Teresa Rae, born September 10th. For several years, Pam was organist at Longbranch Church. The congregation is planning a Shower for little Teresa Rae.

Dianne Kanouse, of Home, is now the manager of "The Second Look" a fascinating shop of nostalgia located by the Longbranch Dock. She is well-known in the area and is eager to show you the clothes, dishes, books, etc., available there.

Bette Sherman thanks all the guests at her Arts and Crafts Shop open house in Lakebay on September 19th.

Ethel Embree of Vaughn and Dorothea Gooding of Olalla won \$10.00 gift certificates for gas at the Lakebay Chevron.

The best-dressed couple at the Civic Center Pioneer Days was so beautifully photographed for the front page of the September issue of the Newsletter, but so anonymous!

Please excuse the gross error of properly identifying Larry and Micki Neadeau of Glencove. Their turn-of-the-century costumes reflect their interest in the last century, as also seen in their renovation of their home, the old Glencove Hotel. That is an on-going process since Micki quit work to devote more time to their refurbishing hobby.

Marian Haskins, RN, of Lake Holiday, is now the Director of Nursing Services at Rocky Bay Health Care Facility. She,her husband Woody live at Lake Holiday, with their two sons who attend Vaughn School.

Marian's past experience was in a hospital in South Carolina, altho she grew up in Tacoma. She replaces Judy Leaf who is now administrator of Cypress Gardens Retirement Home in Bremerton.

LOOK! UNDER THE BIG TENT!

It's the **REXALL SUPER**

C & E Vitamin SALE!



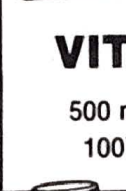
REXALL VITAMIN C
with **ROSE HIPS** \$249
500 mg., 100's



REXALL VITAMIN C
with **ROSE HIPS** \$189
250 mg., 100's



REXALL VITAMIN C
250 mg., 100's \$99c



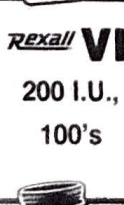
REXALL VITAMIN C
500 mg., 100's \$129



REXALL Chewable VITAMIN C
100 mg., 100's \$99c



REXALL Chewable VITAMIN C
250 mg., \$139



REXALL VITAMIN E
200 I.U., 100's \$209



REXALL NATURAL VITAMIN E
400 I.U., 60's \$399

Am just sure I have that new book on stive enzymes of dian Tadpole some- here!!!

**IS NOW AVAILABLE -
SESSIONS OF A SNEAKY ORGANIC COOK.**

**ER SPECIAL -
ANIC - Vit. E \$.50 OFF ON ANY BOTTLE**

Norwich Aspirin

5 gr., 250's
Reg. 1.49 **99c**

Sudafed
Colds,
Allergies,
Hay Fever
24's
Reg. 2.08

dy's
Health Foods

884-3977



**WANT...
TO BUY?
TO SELL?
RESULTS?**

WANT ADS

**...WILL
WORK
FOR YOU!**

FOLD-AWAY BED. \$75. Electric knife with case. \$10. Excellent condition. 884-2784.

ALTERATIONS. Experienced, for men and women. Also do zippers. 857-6666.

NINE DRAWER DRESSER with mirror. 884.2653.

OVERCROWDED FARM FORCES SALE:

Registered Nubian Milking Doe (1 gal. + daily), Butcher Hog, Young Black Ram, Young Ewe, 3 Mature Ewes; Producers of twins and excellent fleeces. Choice and Charming Weaner Pigs; ready to travel October 5. Call Dolores 857-4329.

INTERVIEWING FOR RESIDENT MANAGER.

Husband and wife. Storage warehouse, Longbranch. Contact Paul Busi or Norm O'Day. 383-5535 or 884-2786.

SHAKLEE PRODUCTS FOR SALE: phone 884-2598

LOST: Cat came to my home. Has long gray hair with white plastic collar. Must be someone pet in the Vaughn area. Was injured, but is fine now. Can not keep. Call 884-3423.

CARPET INSTALLATION: Lynn LaSource. Licensed and bonded. 884-3281

BUD'S OF LAKEBAY T.V. repair. Antenna installation. Color and black and white. Fast dependable service. Call 884-2217.

FLOOR COVERINGS INSTALLED: Carpet, linoleum, tile, parquet, ceramics. Orrie Moore, 884-3852.

CONCRETE: \$150 per sq. ft. Wasilchen Concrete, Bonded. 876-6848. Unique construction to individual desire; patios, walks, steps, etc.

ANTIQUES & USEFUL THINGS, 2nd LOOK PLACE. Next to Longbranch Dock. Winter hours Thurs. thru Sunday, 1:00 PM-5:00 PM or call 884-3530

WILL MEND school and work clothes to make them good as new. Call anytime 884-4436.

RABBITS FOR SALE: for pets or freezer, bunnies, bucks, & does. 884-4436.

ROUND BREAKFAST TABLE - 36" high quality black cast iron pedestal NEW - \$40. Sears mimeograph \$40. Old dresser (to refinish) \$30. 884-3581.

RATES FOR ADVERTISING

Single Bus. Card - 2x3 1/4.....\$ 5.00
Double Bus. Card - 4x3 1/4..... 10.00
Triple Bus. Card - 6x3 1/4..... 15.00
1/4 Page - 6 1/2 x 4 1/2 or 8x3 1/4..... 18.00
1/2 Page - 6 3/4 x 9 3/4..... 35.00
Full Page - 9 3/4 x 13 1/2..... 65.00
Want Ads - 10¢ per word. Senior Citizens and Teenagers Free.

7110 6th Avenue
Phone 564-6471

Highland Dry Cleaning-Laundry

Alterations-Repairs

Bob & Trudy Jones

Pete's Auto Repair

"WHERE SATISFACTION IS A MUST"

DAYS: MON. THRU FRI. - 8 TO 5

VISA AND MASTER CHARGE CARDS ARE WELCOMED!

884-3124

IN DOWNTOWN KEY CENTER

TO PLACE A WANT AD, CALL 884-3847. DEADLINE IS 15TH OF EACH MONTH.

TO PLACE A LAYOUT AD, CALL 884-2951. DEADLINE IS 15TH OF EACH MONTH.

To submit an article or written material, call 884-2500 or 884-3161. Deadline is the 20th of each month. You may mail your article to the NEWSLETTER, P.O. Box 82, Vaughn, WA. 98394. You can also drop it off at Walt's Fine Foods. 300 words or less is best.



"INCREDIBLE HUCK"

ALL TYPES HOME REPAIR
HOURLY - BID - BARTER

- * CARPENTRY
- * ROOFING
- * REMODELING
- * PLUMBING
- * FENCING
- * DRYWALL
- * PAINTING
- * FREE ESTIMATES

ALL WORK GUARANTEED

884-2479

KEY CENTER

MINTERBROOK

OYSTER CO.



Open 6 Days

9 a.m. to 4 p.m.

(Closed Sundays)

Retail-Wholesale

CLASSES FOR PARENTS & YOUNGSTERS

L.H. Bates Home and Family Life Education Dept. is reaching out to the Peninsula area to support parents with very young children. Parents With Infants (birth to walking) will gather Tuesday evenings 6:30-8:00 PM at the Key Peninsula Health Clinic, beginning October 7th.

Each class includes sharing questions and concerns about child and parent development, enriching activities for babies, music experiences and a nutritious snack.

In addition to the Key Center Infant group, classes are available for Parents with Infants in Gig Harbor. Parents and Walkabouts (walking to ages 2+ years) will meet in Purdy and Gig Harbor. An exciting class exclusively for Dads and Walkabouts will meet Saturday mornings from 10:00-11:30 beginning October 11.

For more information or to register call L.H. Bates Home and Family Life Dept. 597-7240. Enrollment is limited and classes fill quickly. Tuition is \$12.00 for 8 weeks.

CHRISTMAS SHOPPE OPENS

The Glad Tidings Christmas Shoppe in Burley will open its second holiday season on October 1st. You will find all kinds of handcrafted gifts and decorations for sale and on consignment.

Stop by between 10:00 AM and 4:00 PM Monday through Saturday in the historic old building located behind the Burley Post Office. Margie Cantwell, owner, will show you a wide selection of items.

PENINSULA PROFILES

Early in September, 1980, Mr. and Mrs. Bill Cooke moved into their new house on the Home waterfront. Mrs. Evadna Cooke has had a long association with Home.

In 1907, she and her sister, Mae deCrane (Zubbi) moved with their family from Iowa to Home. Martin deCrane, his wife Fredrika, Mrs. Cooke's parents, first lived in the Happy Valley area of Home.

Mrs. Cooke attended elementary school at Home and high school at Stadium in Tacoma. After her father died, her mother married Bill Cottrell who lived on the waterfront.

Mr. and Mrs. Cooke have lived in Bremerton and California before retiring to the Cottrell homeplace here.

NEW COMMISSIONER APPOINTED TO KEY PENINSULA PARK & REC. BOARD

Bob Schottland, a retired teacher/counselor from Rocky Bay has been appointed as a commissioner to the Key Peninsula Park and Recreation Board at their regular monthly meeting.

Mr. Schottland will complete the term of John Steiner, who submitted his resignation at the August Board meeting.

Bob has been active in community affairs and has served as President of the Key Peninsula Civic Center in 1978-79, is an at large representative on the Pierce County Community Development Citizens Advisory Committee, is a member of the Tacoma Community College Advisory committee and the Peninsula Superintendent's Citizen committee. He also finds time to volunteer his technical talents on the Key Peninsula Newsletter staff and made all the routed signs at the Key Peninsula Sports Center, Key Peninsula Lutheran Church property and the Civic Center.

DOG SHOW

The deadline is noon September 3rd for entries in an all-breed dog show and obedience trial and junior showmanship competition set for September 21st at the Kitsap County Fairgrounds.

The event is sponsored by the Peninsula Dog Fanciers Club.

Entries may be sent to show superintendent Jack Onofrio, P.O. Box 25764, Oklahoma City, OK, 73125.

For further information call Carol Vencil at 871-4593 or Tina Morton at 377-6982.



Cascade Railway Tours

To Reno

OPEN DATES ---
Oct. 26, Nov. 1 & 15 and Dec. 15

7 DAYS & 6 NIGHTS
\$189.00 double occupancy
(Pick up on the Peninsula)

FOR FURTHER INFORMATION CALL:
Sue or George Stoner
Gig Harbor Travel
858-9925
Fred Dowel or 383-4615

The Eatery

K.C. CORRAL - KEY CENTER
884-4274

HOURS:
MON.-TUES.: 10AM - 8PM
FRI. & SAT.: 10AM - 10PM
SUNDAY: 11AM - 6PM

COUPON

BUY ONE PIZZA - GET SECOND SMALLER ONE AT
HALF PRICE WITH THIS COUPON
OFFER GOOD FROM OCT. 1 TO OCT. 31

COUPON

857-4276

Merle Free Automotive Repair

ALL WORK GUARANTEED

over 30 years experience
1 1/2 MILES ON CREVISTON DRIVE - 1ST LEFT TURN SOUTH OF THE FRUIT STAND



CELLAR ARTS and CRAFTS

Classes • Gifts • Supplies
Tole and Decorative Painting
Decoupage
Macrame

Hrs.: 11:00 AM - 5:00 PM
Sun. 1:00 - 4:00 PM
Phone 858 9391

7804 Pioneer Way P.O. Box 244 A Gig Harbor, WA 98335

BULLDOZING
BACK-HOE



GRAVEL AND FILL DIRT
LOG BULKHEADS

Johnson Bulldozing Co.
LAKEBAY, WASHINGTON 98349
PHONE 884-2362

DAVE JOHNSON
PHONE 884-3330

PHIL JOHNSON
PHONE 884-2607

JERRY YORK

York Insurance Agency
Auto • Life • Fire • Health & Accident

Post Office Box 364
Gig Harbor, Washington 98335

Office 858-6580
Res. 857-6587



The Fruit Stand

LOCATED 2 1/2 MILES WEST OF
PURDY ON HIGHWAY 302

TOM'S BARBER & TACKLE SHOP

OPEN 10 - 5:30
TUES. THRU SAT.

Key Center



LOCATED DOWNTOWN
GIG HARBOR PH. 858-9927
Nine offices serving Pierce Co.

857-4011



GEORGE D. DURIS
BRANCH MANAGER - PURDY



P. O. BOX 23, BURLEY, WASHINGTON 98322

SAKURA NURSERY

884-3937 KEY CENTER, WA.

- * HOUSE PLANTS
- * BULBS
- * WIND CHIMES
- * GIFT CERTIFICATES

NEW HOURS:
Closed Sun. & Mon. Open Tues.
thru Sat. 10-5 p.m.

L.E. Jopp Builders

- ★ Carpenter Work
 - ★ Foundations
 - ★ Bulkheads
 - ★ Concrete Work etc.
- 884-3841

LICENSED & BONDED

CALL COLLECT

JERRY'S CAFE

DOWNTOWN KEY CENTER

884-3707



LONGBRANCH MERCANTILE

FINE FOODS
MEATS-PRODUCE-GROCERIES
GAS-OIL-BEVERAGES

HOURS: Everyday 9 a.m. - 7 p.m.
884-3721

John Brewer

(208) 857-2253



Residential-Commercial

14519 Peacock Hill Avenue, N.W.
P. O. Box 228 Burley, WA. 98322

John E. Miller Walter E. Paulsen

Peninsula Accounting Associates

5209 Pt. Fosdick Rd., Suite 203
P.O. Box 676
Gig Harbor, WA. 98335

206-858-8852



Bus. 275-6165
Res. 275-6473

THE FIREPLACE CENTER ETC.

Fireplaces & Accessories
Custom Built Fireplaces
Complete Line of Masonry

BEAUFORT, WA. 98528

LEONARD & HILDEGARD
HOHMANN



COMMERCIAL RESIDENTIAL
ELECTRICAL INSTALLATION



P. O. BOX 65 DON MILLS WA 98325



Randy's Bulldozing

- 4 in One Bucket • Land Clearing • Stump Haul
- Excavating • Dump Truck • Roads Punched
- GENERAL DOZING •

RANDY HIMRICK
HARRY HIMRICK
1-857-2625
1-884-3048

Rt. 4, Box 4783-1
Gig Harbor, WA 98335

DUANE G. FLEMING

Cascade
Insurance
Underwriters
Inc.

2200 6TH AVENUE • TACOMA, WASHINGTON 98403

AC 206/627-3133

Residence 884-3340

NEW BOOKS THAT CAN BE ORDERED AT THE KEY PENINSULA LIBRARY HERE

Non-fiction:

- Cooking without Recipes (641.5
- Cooking without Recipes 641.5 Worth
- James Beard's Fowl & Game Bird Cookery 641.665
- Northwest cookbook 641.5979 Gault
- Pray to Win 248.32 Boone
- Impact of a Major Eruption of Mt. Rainier (NW 363.3409 Cullen
- 2500 Jokes to Start 'Em Laughing 818.5407 Orben
- Worldwide Adventure Travelguide 910.25 1980
- Franz Beckenbauer's Soccer Power 796.3342 Beckenbauer
- Jim Fixx's Second Book of Running 796.426
- How to Fish Washington Handbook NW 799,0979
- Survival Handbook for Widows 301.4286 Loewinsohn
- Parent Power 649.1 Wright
- Free Yourself from pain 616.047 Bressler
- Treating your Hyperactive and Learning Disabled Child 649.1 N.Y. Institute for Child Development



"They're always helpful when I need them,"

— says Terry Foutch, The Brook Restaurant owner.

"I have banked at The Peninsula State Bank all of my life, and so have my parents. The bank people have helped me financially in my business and personally. They know me. There's no red tape," Terry emphasizes.

chowder, geoduck, and hamburgers plus a salad bar and conventional menu. It's open 7-days a week with Friday and Saturday hours until 9 and Sunday from 8 to 8 for brunch and dinner.

The Brook, an attractive restaurant seating 52, is located on Highway 302 4-miles west of Purdy. It's a family restaurant specializing in clam



THE PENINSULA STATE BANK

Gig Harbor • Purdy • Point Fosdick Square

Member FDIC and Peninsula Country

KEY PENINSULA PARK & RECREATION DISTRICT- FINANCIAL REPORT 1980

EXPENDITURES

CLEARING ORIGINAL LAND

Logging, bulldozing, grading, etc..... \$ 26,000.00

WATER SYSTEM

Well reservoir, sprinklers, septic tank and plumbing..... 15,000.00

TENNIS COURTS

Community contributions... \$ 5,000.00
Pierce Co. contributions.. 10,000.00.... 15,000.00

FENCING & BACKSTOPS

KPPR contributions..... 15,000.00

LIGHTING

For park and field..... 19,000.00

RESTROOMS & CONCESSION STAND.....

24,000.00

SPORTS EQUIPMENT

Cheney Foundation Grant..... 5,000.00

PAVING FOR PARKING AREAS.....

33,000.00

OPERATING EXPENSES

Electricity, office supplies, for 1977-79..postage, etc..... 5,700.00

MAINTENANCE

Mower, houseshoe pits, bleachers, signs, etc..... 6,000.00

Total Expenditures \$178,200.00

REVENUES

M & O Levy spent to date - 1977-79...\$ 67,700.00

Grants - Federal & Pierce Co..... 97,000.00

Donations - Tennis Courts, Cheney Foundation and Rotary Club..... 11,000.00

Volunteer labor - over 300 helpers... ??,???.??

Total Revenues \$ 176,200.00

CURRENT TOTAL APPRAISED VALUE... 1/2 million dollars


Shorewood Real Estate, Inc.

Key Center 884-3303

Key Center Branch
P. O. Box 346
Vaughn, Washington 98394

SERVING THE GIG HARBOR AND KEY PENINSULA AREA FOR OVER 30 YEARS.


ACREAGE, WATERFRONT, HOMES AND INVESTMENTS



858-9933 884-3303

9'S FAIR HARBOR MARINA


MOORAGE
DIESEL-GAS-OIL
BEER-WINE-MINI GROCERY



OPEN: 7 A.M.-7 P.M.
CLOSED THURSDAY

426-4028 RES. 275-6417

FRESH GEODUCKS




AL-ANON Family Groups

Mon.-8p.m.-Key Pen. Health Cen.
Tues.-1:30p.m.-King of Glory Lutheran Church -Purdy
Wed.-8p.m.-St. John's Episcopal Church - Gig Harbor
Fri.-8p.m.-Key Pen. Health Cen.
Sun.-8p.m.-St. John's Episcopal Church - Gig Harbor

BEA:884-4133 MURIEL:884-2889

Jim's
GATEWAY WINDOW CLEANING



HOMES-OFFICES-NEW CONSTRUCTION


Our Service is Prompt and Courteous - with reasonable rates. For a FREE ESTIMATE call us at 265-2968.

884-2523 DICK HALE KEY CENTER

BULLDOZING BONDED & LICENSED

876-0144 JERRY ERBELE PT ORCHARD


D-J'S BACKHOE & DUMP TRUCK SERVICE, INC.
GENERAL CONTRACTING



NO JOB TOO SMALL

BOBCAT WEEK END WORK DITCH WITCH

858-6066 (SHOP)
884-2783 (HOME)



LARRY NICHOLS
Upholstery

COMPLETE FURNITURE REUPHOLSTERING
BOAT TOPS

NOW LOCATED IN GIG HARBOR

CHRIS MORTON
ASSOCIATE

PENWEST INCORPORATED REAL ESTATE

Office GIG HARBOR 858-8366
TACOMA 627-5422

Residence PORT ORCHARD 876-3024

Chevron LAKEBAY CHEVRON

ELECTRONIC TUNE-UP
FRONT END ALIGNMENT
ATLAS TIRES & BATTERIES
CHAIN SAW & SMALL ENGINE SERV.

Rt. 1, Box 43
LAKEBAY, WA 98349
884-3828

RODGER BILLE

Longbranch Community Church

Sun. Sch.: 10 a.m.
Bible Study: 10 a.m.
Worship: 11 a.m.

Longbranch, WA.



dump truck
backhoe
grader
blade

GRADER SERVICES 884-2271



top soil
road gravel
rockery rock
crushed rock

PHIL RADCLIFFE
route 1, box 95c
lakebay, wa 98349

Fireside Shop

KC Corral
Key Center, Wa.

Top Brand Wood Stoves

COUNTRY
EARTH
TIMBERLINE
ALASKA KODIAK

*Airtight Uprights & Fireplace Converters

*All pipe accessories
*Complete Installation

COMPARE MY PRICES HERE BEFORE YOU BUY!

NOW HANDLING



EMBERMATIC GASGRILL BY ARKLA

HOURS: CLOSED MONDAY
TUES. THRU SAT. 10 AM TO 6 PM

884-4248

ALCOHOLICS ANONYMOUS

MEETINGS HELD AT KEY PENINSULA HEALTH CENTER.

Key Center Group-Mon.-8 p.m.
Longbranch Group-Fri.-8 p.m.

CALL: ANN 884-2626
BURKE 884-3262
JIM 884-3886

FALL SPECIAL

Varathane

SAVE \$150 LOT!

Perfect finishes are easy with fine coatings from Flecto. They are practically fool-proof. And they look so professional you won't believe you did it yourself.

Wait until you see how tough they are. You will find a Flecto finish for just about everything that needs painting; from furniture to fences, baby cribs to barbecues.

OFFER EXPIRES ON:
Sept. 30, 1980



Key Western BUILDING CENTER 884-2311
KEY CENTER

HOURS: 8 a.m. to 5 p.m. - Mon. thru Sat.

The Key Western Co., P.O. Box 12825 - Lakewood, CA 90606

WE SHOT AN "ARROW" INTO THE AIR

-by M.B. Duchnowski

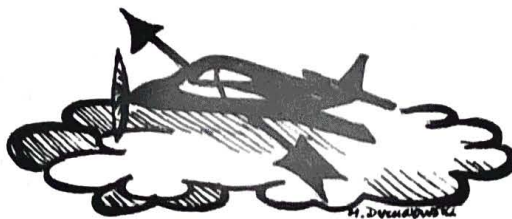
Today with Women's Lib and ERA women are exerting more rights and trying new things. We even have our first women airline pilots and Air Force pilots. They say life begins at 40 and since I am entering that blissful state, I can say that many adventures can begin at 40. Long-fellow wrote a poem "I Shot an Arrow Into The Air. It fell to earth I know not where." Our arrow was a bit larger and faster since it was a four seater Cherokee "Arrow", but we shot into the air and knew not where we would land. Weather conditions made the decision for us although we had filed a flight plan for each leg.

Our 12 day excursion began on August 12. We were taking our two sons, ages 12 and 4, to Johnstown, Pennsylvania to visit their grandparents and to attend a 20 year reunion.

As usual the Tacoma area was rainy and foggy, so we made an instrument departure from Fort Lewis Aero Club toward Mt. Rainier. What an education! -IFR, VFR, ILS - all these letters were Greek to me, but one day later and halfway to the East coast, it was beginning to make sense.

Seeing thunderstorms and knowing we had to go around or land created many questions. How high are thunderstorms? Does lightning go up or down? How high do cloud layers go? You say we are going down through all these clouds? I can't see a thing!!! How do you use these instruments anyway? My pilot husband informed me that we were on an airway and we would fly airways all the way to the east. We were also on radar most of the time - which helped calm my nerves, especially thinking about flying over the mountain ranges. The deserts and flatlands are no problem. There are so many fields and roads to land on, but the mountains look very forboding from the air.

Heading toward Missoula, Montana; where we spent the first night, we observed some thunderstorms. What a relief to land after a 45 minute detour around a thunderstorm. Our next stop was Mitchell, South Dakota where we called a courtesy car from a neighboring motel to pick us up. The driver was kind enough to drive us past the Cornpalace for the children to see. Our pilot, my husband, thought we could arrive by the following evening at our destination in Johnstown, Indiana or Dubois, Penn. - depending upon which airport had the best weather conditions, but the Eastern climate is very unpredictable and smoggy with thunderstorms in August so we had to spend a third night in Toledo, Ohio. Only 300 miles from Grandma's - so near and yet so far.



By this time Danny (our three year old) did not believe we were ever getting to Grandma's and he said, "This airplane hurts my ears. Let's take the big one". We had a very nice time in Toledo, however. Being so full of questions I asked to visit the tower, weather bureau and FAA to see the radar screens etc. - wanted to see just how big of a blip we were. When four people are going over the Rocky Mountains at 11,000 feet - it makes one feel very alone and small shielded only with clouds and sky, and knowing we were seen on radar at all times adds a little strength.

Much of the time we had to take what came our way and fast-talk someone into giving us a lift. Some of the small airfields we went into had only machines or no food at all so we would get a lift to the nearest restaurant or motel. It turned out to be very interesting and we met some nice people.

Being greeted at Dubois airport by our families was not quite the exuberant reception Charles Lindberg received in 1927, but I now know the feeling he must have had back 53 years ago.

The return trip was terrific because the weather conditions were excellent. We left Pennsylvania on another instrument departure because of smog and fog, that hangs in the air back east, but we flew into the sunshine and saw a good portion of the United States from the air - Pennsylvania, Ohio, Indiana, Illinois, Iowa, Wyoming, South Dakota, Montana, Idaho and Washington - a BEAUTIFUL sight!!!

The most breathtaking sights were PA's rolling hills, the farms in the midwest, seeing Mt. Rushmore from the air and all four presidents faces, the Rocky Mountains and, of course, our own beautiful Mt. Rainier and Cascades. It still seems like a dream that I actually flew 5,000 miles in an airplane with one engine over all that desert and mountains.

I have decided that my husband is an excellent pilot and I was born 20 years too late to make flying my profession (a hidden desire at age 18). Flying to exotic places will have to be a figment of my imagination, from books or aboard an airliner jet.

Congratulations to all you young gals who are making your way to the top in the flying world!!!

MOORE TOPS IN PIGEONS

A Longbranch pigeon fancier, Orie Moore, was the big winner in the open class pigeon contest this year at the Southwest Washington Fair.

Moore's birds captured first place in the following categories: best young of the show, champion of the show, best fancy bird, best show racer, best African owl, best norwich cropper and best Berlin longfaced tumbler.

Other winners in the pigeon judging were Neal Nielsen, Chahalis, for the best racing homer; Baginski and Jacobsen, Tacoma, for the best roller; Dave Jensen, Chehalis, for the best utility bird; Vern Sorensen, Centralia, for the best oriental frill and the best white side tumbler; Jim Jameson, Cosmopolis, for the best giant homer; Dave Jansen, Chehalis, for the best runt; Jim Rattie, Elma, for the best white king; and George Curtis, Kelso for the best white fan tail.

KEY PENINSULA LIBRARY HOURS

Mon.&Thurs.: 1-5pm, 6-9pm

Tues.: 1-5 p.m.

Saturday: 10-12noon, 1-4pm

K.P.C.C.

GAME NITE

Every Wed. Nite 7:30^{PM}

(DOORS OPEN 6P.M. FOR CARD SELECTION) LOTS OF TABLE SPACE

SNACK BAR IS OPEN

+ NEW BROWN CARDS +

\$\$ BONUS GAME \$\$

#1 Jack Pot - \$200 55Nos

#2 Jack Pot - \$500 56 Nos.

Game No.18 BIG X -

Winner Takes???

**Key Peninsula
Civic Center
VAUGHN, WA. 98394
ON HWY. 302 & SO. VAUGHN RD.
884-3456**

K - C MEATS

**Custom Kill
Sausage**
(COME IN FOR A SAMPLE)



**Cut & Wrap
Sides - Quarters &
Wholes**

Freezer Lockers Available Soon

IN DOWNTOWN KEY CENTER - - - BEHIND THE TRADING POST

NOW OPEN!

884-4334

884-4335

K.C. FEEDS

KEY CENTER

(BEHIND TRADING POST IN KEY CENTER)

884-4335

COMPETITIVE

QUALITY & TON DISCOUNTS

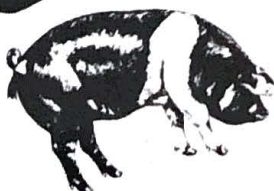
ALL NEEDS FOR YOUR ANIMALS

FEATURING PURINA CHOWS

COME IN & TALK TO US
WE'RE WILLING TO
WORK WITH YOU

SAVE TIME & GAS
PUT YOUR FUEL
PRICES IN YOUR
ANIMALS

ANIMAL FEED



 Purina...
planning tomorrow
with research today.



ASK US ABOUT ADDITIONAL SAVINGS


Peninsula Country
SCHOOL EVENTS
October 1 thru 31

- | | |
|--|--|
| <p>1 - Soccer, Dieringer at Goodman # 3; 7:30
 2 - Soccer, Goodman # 2 at Dieringer, 3:30
 Goodman # 1 at PHS—Goodman field, 3:15
 Meet The Bands—PHS, 7:30
 J.V. Football, PHS at Enumclaw
 V-Ball, PHS at Fife
 XCountry—PHS at F. Pierce
 Girls Soccer, Bainbridge at PHS
 Golf, PHS at F. Pierce
 8th Gr. V-Ball, PHS at Goodman
 XCountry, GHHS at Enumclaw
 V-Ball, Washington at GHHS
 Golf, GHHS at Fr. Pierce
 Girls Soccer, GHHS at C. Kitsap
 3 - Football, PHS at C. Kitsap
 W. Polo, PHS at C. Kitsap
 Football, GHHS at Port Angeles
 G. Swim, Olympic at GHHS
 6 - Soccer, Goodman # 2 at Goodman # 3, 4:00
 J.V. Football—Peninsula at GHHS
 Daffodil Princess Selection—PHS
 Open House—Evergreen
 7 - Soccer, Key Center at Dieringer, 3:30
 Soccer, Yelm at PHS 3:30
 Soccer, Goodman # 1 vs. Goodman # 2, 3:15
 V-Ball, Washington at PHS
 Girls Soccer PHS at C. Kitsap
 Girls Swim, Tahoma at PHS
 Daffodil Coronation, GHHS
 Girls Swim GHHS at Tye
 V-Ball GHHS at Fr. Pierce
 Girls Soccer Port Angeles at GHHS
 Girls V-Ball, Goodman at N. Kitsap
 8 - Soccer, Goodman # 1 vs. # 3, 4:00
 J.V. Football Tahoma at PHS
 8th Gr. V-Ball—PHS at B-Bridge
 9 - Soccer, Goodman # 1 at Dieringer 3:30
 Soccer, Yelm at Goodman # 2, 3:30
 Girls V-Ball, Goodman at Dieringer
 Football, Fr. Pierce at PHS
 V-Ball Fr. Pierce at PHS
 XCountry, Enumclaw & C. Kitsap at PHS
 Girls Soccer, PHS at Port Angeles
 Girls Swim PHS at GHHS
 Golf, PHS at GHHS
 XCountry
 V-Ball Enumclaw at GHHS
 Football GHHS at Fife
 Golf GHHS at Gig Harbor
 Girls Soccer Olympic at GHHS
 Girls Swim GHHS at PHS
 10 - XCountry GHHS at Auburn
 Roller Coaster Relays
 13 - Soccer, Key Center at Goodman # 3, 4:00
 J.V. Football, PHS at Fr. Pierce
 Homecoming, PHS
 J.V. Football Fife at GHHS
 14 - Soccer, Key Center at Goodman # 1, 3:30
 Soccer Goodman # 2 at PHS, 3:15
 Powder Puff Football, PHS, 7:30
 V-Ball PHS at Enumclaw
 Girls Soccer, PHS at Olympic
 8th Gr. V-Ball Pioneer at PHS
 V-Ball GHHS at Fife
 Girls Soccer, B-Bridge at GHHS
 Girls Soccer, Goodman at B-Bridge
 15 - Homecoming Assembly, PHS
 16 - Soccer, Key Center at Goodman # 2, 3:15
 Soccer Goodman # 1 at Yelm, 3:30
 Soccer, Dieringer at PHS, 3:30
 J.V. Football PHS at W. River</p> | <p>V-Ball, PHS at GHHS
 XCountry, GHHS at PHS
 Girls Soccer, PHS at GHHS
 Golf, Match at PHS, Artondale Golf Club
 8th Gr. V-Ball PHS at N. Kitsap
 XCountry, GHHS at PHS
 V-Ball, PHS at GHHS
 Choir Concert, GHHS
 Girls V-Ball, Pioneer at Goodman
 Soccer, Goodman # 3 at Dieringer, 3:30
 Football, Fife at PHS
 Girls Swim, Enumclaw at PHS
 Homecoming Dance PHS
 Football GHHS at Enumclaw
 Girls Swim GHHS at Port Angeles
 20 - Soccer, Goodman # 2 vs. Goodman # 3, 3:15
 J.V. Football PHS at Fife
 J.V. Football Enumclaw at GHHS
 21 - Soccer (8th Gr.) Yelm & Key Center at PHS
 Soccer, Dieringer at Goodman # 2, 3:30
 V-Ball, Fife at PHS
 Girls Soccer, PHS at B-Bridge
 Girls Swim PHS at N. Kitsap
 Choir Concert—PHS
 Open House, GHHS
 Girls Swim, Washington at GHHS
 V-Ball GHHS at Washington
 Girls Soccer, C. Kitsap at GHHS
 23 - Soccer, Dieringer & Key Center at Goodman
 Soccer, PHS at Yelm (8th Gr.)
 J.V. Football, PHS at Mt. Si
 V-Ball, PHS at Washington
 XCountry, W. Cnt. at N. Kitsap (League)
 Girls Soccer, C. Kitsap at PHS
 Golf, PHS at Washington
 V-Ball 8th Gr. Goodman at PHS
 Girls V-Ball, Goodman at PHS
 Golf, GHHS at Washington
 XCountry, Central Div. at Spanaway Lk.
 Girls Soccer, Port Angeles at GHHS
 V-Ball, Fr. Pierce at GHHS
 24 - Soccer, Goodman # 2 vs. Goodman # 1, 2:30
 Soccer, PHS at Goodman # 3, 4:00
 Football, PHS at Enumclaw
 Girls Swim, Olympic at PHS
 Girls Swim, GHHS at B-Bridge
 Football, Washington at GHHS
 Pep Band, GHHS
 27 - J.V. Football Enumclaw at PHS
 Girls Swim PHS at Tye
 Golf, League Medalist Tourney
 Back-to-School—PHS
 J.V. Football, GHHS at Washington
 27-31 - Parent Conferences—Evergreen
 28 - Soccer, Goodman # 3 at Yelm, 3:30
 Parent Organization Dessert Potluck at
 Purdy Elem. 7:30-9
 V-Ball PHS at Fr. Pierce
 Girls Soccer, P. Angeles at PHS
 Girls Swim, C. Kitsap at GHHS
 V-Ball, GHHS at Enumclaw
 Girls Soccer, GHHS at Olympic
 Golf, League Medalist Tournament
 29 - Carnival—Discovery Elementary, 5-9 p.m.
 (All proceeds go to playground equipment
 at "new" Discovery Elem.)
 30 - BB (Boys) 1st turnout for 7th & 8th gr.
 V-Ball, Enumclaw at PHS
 V-Ball, Fife at GHHS
 31 - Football, PHS at Washington
 Homecoming Game Football—Fr. Pierce
 at GHHS</p> |
|--|--|



Are your bulbs planted? There still is time but do it soon. Most of them like to have some warm weather to get roots started before the real cold begins. Tulips are the only bulbs that can be damaged by early growth. Late October or November is best for them.

The Seattle Arboritum is holding its annual bulb sale in October.

They have many of the scarce and unusual varieties that are hard to find. Willing, knowledgeable helpers will answer any questions you may have.

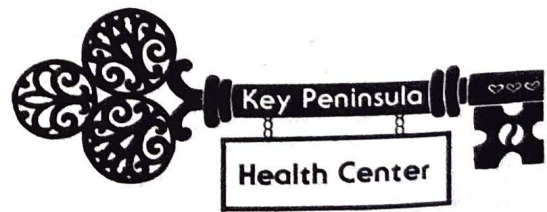
Natural Council of Garden Clubs has a project that asks every garden club member to plant a tree. It need not be limited to garden clubs. Since this is basically a wooded area, why not plant a blooming tree to add beauty to your home! If it is interesting form or color you like best, some of the Oriental maples have brilliant color that changes with the seasons. Some have brilliant colored bark that is right showy in winter. Deciduous trees can be planted as soon as they go dormant. Evergreen trees

can be planted any time the soil is damp enough to dig easily.

As soon as heavy frost kills the annuals, pull and destroy or compost them. A clean garden is much freer from insects, slugs, and diseases than a cluttered patch. I know because I never find the time to keep mine properly groomed.

If you have cabbage or any member of that family—carrots, parsnips, radishes, beets—growing, they need not be dug. They keep much better in the soil that in storage. It requires a real freeze to harm them.

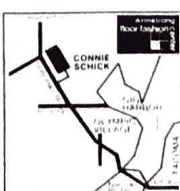
Do not cut roses back severely now. Just remove the spent blooms. Cutting stimulates new tender growth which freezes easily and can damage your shrub.



CLINIC HOURS DURING THE WEEK ARE:
 MONDAY AND THURSDAY- 11:00-7:00
 TUESDAY, WEDNESDAY AND FRIDAY
 9:00-5:00 p.m.

Connie Schick
FLOOR COVERING

858-9129 Springhill Business Center
 8803 State Road, Gig Harbor
 Washington State Contractors License #CO-NN-IS-264BD



LAND CLEARING
ROAD CONSTRUCTION
BANKRUN - GRAVEL
FILL DIRT HAULED



ACTIVE CONSTRUCTION

P.O. Box 191 - Gig Harbor, WA 98335
Bus. 858-2380 - Eves. 884-2884

CHARLIE'S SAW & MOWER

1 mile North of Key Center on Highway 302

Jacobson - Airens Dealer
Authorized Briggs & Stratton Service Center

Saw, Knife & Scissor Sharpening
Nylon Line Trimmers & Brush
Cutters on hand for immediate use.

884-3183 Shop Home 857-6286

EARLE F. KNAPP

LIVESTOCK DEALER
LICENSED BONDED

FAIRVIEW FARM

884-2414 LONGBRANCH, WA.

BUY - SELL - SWAP IT AT THE
Key Center Trading Post

(206) 884-2220
7 MILES WEST OF PURDY
QN HWY. 302 IN KEY CENTER

DON & LIANA FEGLEY
Rt. 4, Box 4627
Gig Harbor, WA. 98335

 **Pet Grooming**

TOP QUALITY - REASONABLE RATES
That Touch of Fluff

By Dyan

For Appointment call 884-3588

JEFF CHARBONEAU

Road Building Landscaping **Excavating**
Land Clearing Foundations

884-2971 RT. 1, Box 142-A
VAUGHN, WA 98394

Bo-Mac Gravel Co.

1920 S.W. PINE RD.
PORT ORCHARD, WA. 98366

OPEN SATURDAY

R. F. "MAC" McCLOSKEY PARTNER 876-2003
857-4185



"The Gray Gull"

Antiques and Second Hand

Rt. 2, Box 370-Yeazell Road
LONGBRANCH

884-2921

Open from 11:00 AM-5:00 PM

Longbranch Automotive Center

AUTO REPAIR JERRY HANSEN
+ DOMESTIC Longbranch, WA.
+ FOREIGN South of the Church
(206) 884-3272

Lucile's Barber Shop

Hours: Tuesday thru Saturday
9 a.m. to 6 p.m.

1 short mile south of
Rocky Bay Health Care Center
on Hwy. 302 going to Shelton

884-3732

WALTS FINE FOODS

AL'S MEATS

Look for Weekly In-store
Specials

FRESH PRODUCE
QUALITY MEATS

In Downtown
Key Center 884-3325

 **N' TACK**

FEED, ACCESSORIES AND
SUPPLIES FOR ALL LIVESTOCK,
POULTRY, DOGS & CATS

OPEN 7 DAYS A WEEK
884-2850
RT. 1, BOX 298AA, LAKEBAY, WA 98349

Burcar Fireplace Screens

Serving Gig Harbor and the Peninsula

WE CAN SCREEN
"ALL YOUR HEARTH'S DESIRES"

JIM BURCAR FREE ESTIMATES
8026 WARREN DRIVE N.W.

GIG HARBOR, WN.
265-3468

JACK BURTON
884-2877

BURTON
MACHINED PRODUCTS

TUES. THRU SAT.
7:00A.M. TO 3:30P.M.
KEY CENTER, WASH. 98335

HOME FEED & GROCERY

9-7 Weekdays 11-6 Sundays
884-2321

Featuring "Choice Beef"
Fresh Produce
Fishers Feed
Friendly Service

 **GLASSFYRE**



SEPTIC TANK TROUBLES

REMEMBER... BEFORE TROUBLES
TANKS SHOULD BE CLEANED
EVERY 3 TO 5 YEARS.

**HEMLEY'S SEPTIC CLEANING
& ROOTER SERVICE**

CALL FOR INFO. 858-3432

Gig Harbor Glass Co.

AUTO+HOME+BUSINESS
ANY GLASS NEED!
EMERGENCY SERVICE AVAILABLE

858-9755

AT THE CORNER OF HUNT ROAD &
HIWAY 16 - NEXT TO ERIN ROCKERY



THE PENINSULA STATE BANK

884-2345

member FDIC

1980

OCTOBER

HOURS
Monday thru Friday 10 a.m. to 3 p.m.
Saturday 10 a.m. to noon



SUNDAY	MONDAY	TUESDAY	WEDNESDAY	THURSDAY	FRIDAY	SATURDAY
Come to the Flea Mart Civic Center Oct. 4 th			1 Game Night 7:30 Gym Bridge lessons 7:30 GR	2 Senior Citizens 12-GR Park Board 7:30 Office Scouts 7:30 SR Vitalize 7:30 Gym Candidate Forum 7:30 GR	3 Girl Scouts 3:30 VFW Grange 6:30 GR Skating 7:00-9:00 9:30-11:30	4 Flea Market 10:00-4:00 Gym 4-H 10-11:30 VFW
5 Lutheran Church 9:30 AM GR	6 Round Dance Lesson 7:00 Gym Square Dance Lesson 7:30 Gym	7 Bridge 7:30 GR Ex. Board 7:30 Office Volleyball, Vaughn Church 7:30-9:30 Gym	8 Game Night 7:30 Gym Bridge lessons 7:30 GR	9 Senior Citizens 12-GR Scouts 7:30 SR KPCC Board 7:30 GR Vitalize 7:30 Gym	10 Girl Scouts 3:30 VFW Lake Minterwood 7:30 VFW Skating 7:00-9:00 9:30 - 11:30	11
12 Lutheran Church 9:30 AM GR	13 Rnd. Dance 7:00 Gym Sq. Dance 7:30 Gym V.F.W. 7:30 VFW V.F.W. Aux. 7:30 GR Art League 7:30 Sky Room	14 Bridge 7:30 GR Karate School 6:00 Gym Volleyball, Vaughn Church 7:30 Gym	15 Game Night 7:30 Gym Friends of Library 8:00 PM VFW Bridge lessons 7:30 Sky	16 Senior Citizens 12-GR Cootiettes 7:30 GR Scouts 7:30 SR Karate School 6:00 Gym Vitalize 7:30 Gym	17 <u>-- NO SKATING--</u> Girl Scouts 3:30 VFW Grange 6:30	18 4-H 10-11:30 VFW Palmer Lake Com. Club 1-4:00 GR Skirts-N-Flirts Square Dance 8:00 Gym
19 Lutheran Church 9:30 AM GR	20 Rnd. Dance 7:00 Gym Sq. Dance 7:30 Gym	21 Karate School 6:00 Gym Bridge 7:30 GR Volleyball, Vaughn Church 7:30 Gym	22 Game Night 7:30 Gym Land Use Planning 7:30 GR Bridge lessons 7:30 VFW	23 Senior Citizens 12-GR Karate School 6:00 Gym Scouts 7:30 SR Vitalize 7:30 Gym Historical Soc. 7:30 VFW Citizens for Better Law Enf. 7:30 GR	24 Girl Scouts 3:30 VFW Skating 7:00-9:00 9:30-11:30 PM	25 Twilite Dance Club 9:30 PM
26 Lutheran Church 9:30 AM GR	27 Rnd. Dance 7:00 Gym Sq. Dance 7:30 Gym	28 Karate School 6:00 Gym Bridge 7:30 GR Volleyball, Vaughn Church 7:30 Gym	29 Game Night 7:30 Gym Bridge lessons 7:30 GR	30 Senior Citizens 12-GR Scouts 7:30 SR Halloween Party 6:30-9:00 PM	31 Girl Scouts 3:30 VFW Skating 7:00-9:00 9:30-11:30 PM	