

## KPMS Athlete Heads for AAU Nationals

Multi-talented KPMS sixth grader, Kyle Gootkin, wants to become a writer. But meanwhile, he has a date to play on the Tacoma Knights sixth grade basketball team in the National AAU Championship Tournament in July.

Gootkin, age 12, is a 4.0 student, who attends honors classes in Math and Language Arts, is a beginning saxophone player and has been named as Student of the Month twice this year. He is also on the KPMS track team and hopes to compete in the shot put, the 600 meter run and the 400 meter relays.

Kyle began playing basketball in the first grade at Vaughn Elementary School. "I had no idea what I was doing," he said. "Whatever it was I was doing, I thought it was fun and playing against people a grade above me made me determine to do well. I remember a day I scored twelve or so points. It was the beginning of my basketball career."

He went on to play in the Peninsula Athletic Association with the Vaughn Lakers. In fourth grade, he had a season high of 32 points and in fifth grade, his high was 34 points.

"I did get my first taste of defeat when we lost our first game in a three-year span," he said. "I cried. I cried a lot. I cried some more, but I got over it."

Gootkin's team eventually went to Tacoma to play in an AAU league. A Tacoma Knights coach invited him to join their team and he's been there ever since.

He practices two nights a week and plays in tournaments at least once a month in leagues from Puyallup to Tacoma to Seattle



Photo by  
Hugh  
McMillan

Kyle  
Gootkin  
at sprint  
practice.

for both sixth and seventh grades. Now, after a year of playing with the Knights, he will go to the Nationals.

On St. Patrick's Day this year, the team's dreams became reality when it won the National Qualifier for the State of Washington. That means they're on their way to the Nationals in Virginia Beach, Va. in July.

The cost of sending the boys to this once-in-a-lifetime experience is about \$20,000, which covers airfare, hotel, tournament fees and uniforms. The deadline for raising funds is June 1, and they have been having bake sales, car washes and other fundraising activities.

Those wishing to help Kyle and his team get to Virginia can call Putri Potter at (253) 445-8782 or Sandy Rogers at (253) 535-0754.

## Key Center Library Sculpture Dedication - June 1st



John Jewell's life-size bronze sculpture, "Balancing the Books", will be celebrated at 1:00 P.M. on Saturday, June 1st at the Key Center Library. The artist is dedicating his creation to all the children who love to read and to their parents, grandparents, teachers and librarians who read to them.

This event is the culmination of months of cooperation and inspiration on the part of the artist, the Friends of the Key Center Library and numerous community organizations, businesses and individuals.

The celebration will include: Noel Parikh, Director, Pierce County Library; John Jewell; Molly Holmes, Friends of the Key Center Library; and Dory Meyers, Community Librarian. There will be lively Irish music and dancing by the Shaffer and Masbruch families who are members of *Scoll Rince Slieveloughane*, the largest Irish dance troupe in the Pacific Northwest. Following the program, there will be refreshments and a reception for the artist, John Jewell, in the Brones meeting room.

All are welcome to share this unique event !!!

## Jazz In June At KPCC - June 1st



Don't miss The Prohibition Jazz Band performing at the Civic Center on Saturday, June 1st, from 8:00 to 1:00 P.M. Admission is \$10 in advance and \$15 at the door. No one under 21 will be admitted. There will be a no host bar and snacks. Tickets are available at Sunnycrest Nursery in Key Center and at the Home Country Store.

## Junked/Abandoned Cars?

We ran this article on the front page of the February issue, but apparently some people missed it, so here it is again. Since February 1st, residents in unincorporated Pierce County (that includes the Key Peninsula) can call 253-798-4636 with complaints about junked or abandoned vehicles on private or public property, as well as complaints about illegal dumping. The line will be staffed by Solid Waste Division employees between 7:30 AM and 4:30 PM on weekdays and will record messages at other times. Callers will receive a follow-up response.

What counts as a junked vehicle? In Pierce County a vehicle is junked if it meets any three of these four criteria:

- \* It is three years old or older;
- \* It is badly damaged, with damage including, but not limited to, a broken window or windshield. OR
- tires, wheels, motor or transmission are missing;
- \* It is obviously non-operable;
- \* Its fair market value is the same as its value as scrap.

## WANTED

Photos and items of local news

(Key Peninsula items)

that you would like to see in our paper

Deadline is the 20th of each month

(earlier is better)

Send to KP News, P.O. Box 3, Vaughn WA, 98394

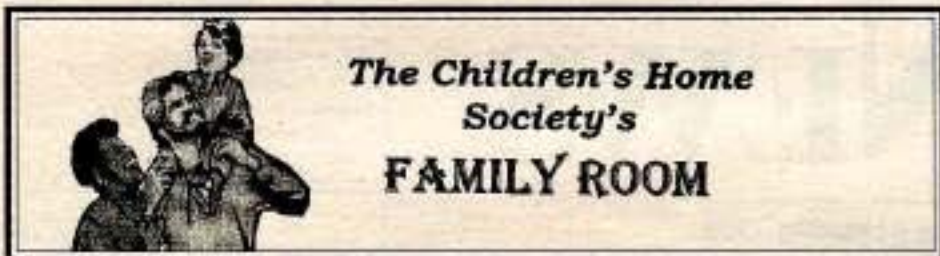
(or put it in our box at the lower level of the

annex at the Key Peninsula Civic Center)

Please include your name and phone number

for verification.





**The Children's Home  
Society's  
FAMILY ROOM**

Submitted by: Edie Morgan

It is time to let you know about our upcoming **Summer Fun Youth Program**, which begins July 8<sup>th</sup> and runs through August 2<sup>nd</sup>. Once again, we will have programs at two sites for children entering 1<sup>st</sup> through 5<sup>th</sup> grade in the Fall. The program will be held Monday and Tuesday at the Civic Center in Vaughn from 8:30 AM to 12:30 PM. Our second site is Evergreen Elementary School, Wednesday and Friday mornings from 8:30 AM to 12:30 PM. Activities include cooperative play, literacy and language skills (German class this year!), crafts and cooking, and visits from community "neighbors." We have a lot of fun, and we hope you'll join us.

We will also have **Kindercamp** at each site, Mondays at the Civic Center from 9 AM - noon, and Wednesdays at Evergreen Elementary, 9 AM - noon. Kindercamp is a parent-child program, designed for children ages 2 through 5 years. Space is limited in these programs, so registration is on a first-come, first-served basis.

Cost for the Summer Fun Youth Program is \$20 per child per site for the full four weeks. Cost for Kindercamp is \$10 per child per site for the four weeks. Scholarships are available, so please don't let cost prevent your child from participating. Watch for a **registration form** in your child's school take-home folder. Please call us for more information or come by to pick up a form.

We are **seeking adult and teen volunteers for our Summer Fun Program**. Teens can receive Community Service hours for their time, and we truly appreciate all volunteers. Middle school helpers are also welcome. Orientation and training will be in late June. All teen and adult volunteers must pass background checks. If you are available during the program schedule, and want to volunteer, please call Edie Morgan at 884-5433 as soon as possible.

Many thanks to the wonderful teen volunteers who served as **Big Buddies** this year, and on the **J.U.M.P. teen activities committee**. This community is blessed with dedicated young adults who give their time and energy to make this a better place to live.

Please note that the last session of **Indoor Park**, before the summer break, is Thursday, June 20<sup>th</sup>.

For information on any of our programs or services, please call the Children's Home Society Key Peninsula Family Resource Center at 884-5433. Our office is in the lower level of the KP Civic Center and we're open 9AM-4PM Monday through Friday.

**Second Annual Key Peninsula Fair  
Looking For Office Manager**

It's time for an update on the Key Peninsula Fair. Things are beginning to jell for the upcoming event, scheduled for August 22nd through 25th. There have been many helping hands, volunteering, but there is always a need for more. Our community has all sorts of talented people. We recently acquired a bookkeeper to aid the treasurer and facilitate the accounting needs. It's becoming clear to the committee that we need a volunteer office manager to aid in coordinating the many facets of the general office duties which are mounting as we become more successful. This coordinator could work from home if needed. If there is someone out there who would like to tackle this project, please call Mike Salatino at 851-4556 as soon as possible. It would be much appreciated by all.

**Drug Awareness Program**

Focus on Methamphetamines

June 5, 2002 7:00 - 9:00 P.M.

Key Peninsula Civic Center Gymnasium

Presentation by M-Lisse of **SAFE STREETS**  
and Linda Rueckl of **CARE**  
(Chemical Abuse Resource & Education)

Sponsored by Citizens Against Crime

**From the Caretaker**

by Lori Warkocki

It's the time of the year for picnics and now you can have one at the Civic Center. We have two beautiful new picnic tables assembled and donated by Scout **Matt Macaras**. One is on the front lawn by the main building and the other is behind the annex by the tennis courts. Two more are scheduled to go in by the playground. Thank you, **Matt!** Everyone should come down and enjoy the cool breezes, green lawns and colorful gardens while you picnic comfortably at one of these beautiful tables.

**Jazz in June**, featuring the soulful sounds of the **Prohibition Jazz Band**, comes on **Saturday, June 1st, from 8:00 to 11:00 P.M.** to the Civic Center. **Tickets at the door are \$15.00.**

**June 5th, Citizens Against Crime** will sponsor a **Drug Awareness** class here at the KP Civic Center **from 6:00 to 10:00 P.M.** There is a vital need for this in today's culture, even here on the Key Peninsula. Although we love this area and its beauty, the fact remains that there are drugs out here just like any other place. This will be a worthwhile few hours to spend if you have any concerns at all about drugs in the community or with a family member.

On **Saturday, June 22nd**, the gym will be unavailable as we will be refurbishing the floor. There have been a number of other maintenance projects going on around here and the place is looking great. We're especially glad to have the tennis courts cleaned up and there's been a lot of tennis playing.

**Historic Vaughn Bay Church**, a new church comprised of descendants of people who maintained the Vaughn Community Church, will be worshipping in the **VFW Room on Sundays from 10:30 to 11:30 A.M.**

Beginning **July 1st**, the laughter and squeals of children will be echoing around KPCC as the **Children's Home Society** will be starting their **Children's Day Camp**. If you'd like to sign your kids up, call CHS at 884-5433.

Well, there you have it for June. We so appreciate the support of our community and those who use our facility. It is a blessing to serve you!



**HARRISON HOMES, LLC**  
"People Are Our Business"



*"Building homes is more than just a business transaction; it's a long-term relationship between people who trust each other"*

*"Attractive, well built homes are not just a matter of sticks and bricks; it's the right people, carefully putting those pieces together that make all the difference."*

**Harrison Homes** has the right people: dependable, skilled employees, sub-contractors, architects and designers, and the most important people of all - Happy Customers!

**Looking for a builder? Call us - we would like to go to work for you.**



Dale Harrison



Steve Owen



Kim Kramer



Harley Wanaka

**CUSTOM HOMES • REMODELING**

**253-884-7670**

HARRIHL02101





## Veterans' Voices

By Eileen Young

The officers of Post 4990 and Auxiliary have been elected and installed, the State Convention starts June 20th and we are ready for another successful VFW year. Retiring Commander Bud Natucci sends his sincere thanks to Post and Auxiliary members for their help and support, while wishing the newly elected officers the very best for the coming year.

Congratulations to the new officers who are:

**VFW Commander - Ray Burke**

Sr. Vice Com. - Bill Sorsdahl

Jr. Vice Com. - David Till

Chaplain - Rhys Wood

Quartermaster - Tim Hale

Judge Advocate - Rick Stout

**Auxiliary President - Roxyanne Wooldridge**

Sr. Vice Pres. - Kathy Patterson

Jr. Vice Pres. - Marjorie Hall

Chaplain - Marguerite Bussard

Secretary/Treasurer - Debra Simon

Conductress - Frances Meyer

Guard - Irene Wooldridge

Trustee - Shirlee Merritt

Thanks to ALL who participated in the Memorial Day event, from the Scouts, Cubs, leaders, parents, VFW members to the Northwest Pipes and Drums, the local choral group "Technical Difficulties", soloist Sunny Jo Garth, the two fabulous trumpet players, the Vaughn Cemetery board members and our own community for their support. And to the folks who made the trip from the Manor in Tacoma, it was a pleasure to have you all there.

Thanks also go to those who helped and supported the ladies "yard sale" and the Harvestime "Spring Into Summer" celebration and to those VFW members who took the time to make the Buddy Poppy days such a success. Good job - well done.

REMEMBER, meetings of your VFW are every 2nd and 4th Monday at 7:00 P.M. at the Civic Center.

Next BIG event is the Fireworks sale during the last week of June through July 4th. Please plan to work at the stand this year.

See you next month and remember: The greater the obstacle, the more glory in overcoming it!

## Outdoor Pet Safety

by Robert McCrossin, Bayside Animal Lodge, Ltd.

Many people enjoy outside activities and leisure time with a pet. Here are some simple tips to help keep your dog or cat safe when they go outdoors.

**Identify your pet.** An identification tag is a simple and inexpensive way to put your name and telephone number, as well as the pet's name, on a collar. The drawback is that tags and collars can come off. Other forms of ID include tattoos or microchips which are permanent identification markers.

**Think safety.** Unless very well trained or in an enclosed environment, your dog or cat should be on a leash. One of the most common injuries for pets outside when running free is being hit by a car.

**Keep your pet groomed.** Spring, summer and fall all provide the chance for fleas and ticks from the great outdoors to infest your pet. Check your pet's skin and coat close to the skin for parasites. Using a fine comb will help. Do not shave your pet down to the skin if he or she spends a lot of time outside in the heat of summer or in the cold of winter. Hair provides protection from the sun (a dog can get sunburned), and insulation from heat as well as cold.

**Public areas, like parks, require good pet manners.** Early socialization in a dog's life will make it a pet who is enjoyable walking or playing around other pets and people. If you know your pet is not friendly, then take steps to prevent any negative interactions with others, or find quiet isolated areas to enjoy your pet's company alone. *(Ed. Please clean up after your pet in public places.)*

Be sure your pet is vaccinated for rabies, a distemper/parvo combination and bordetella. Many diseases are contagious through air or ground contamination.

Many pets, especially dogs, like to travel with their owners. Never leave pets in hot vehicles and remember to bring along the leash and water. Although many dogs like to ride with their heads out the window, this can be a source of eye irritation and damage, not to mention a route of escape if they jump or fall from the vehicle. Keep a pet first-aid kit in the glove compartment or trunk for any minor injuries that may occur while you are away from home.

Your dog or cat will love being with you and will savor the outdoors as much as you do. A bit of preplanning and using common sense will keep outdoor ventures happy experiences.

Happy Father's Day  
Sunday, June 16th



**BAYSIDE ANIMAL LODGE, LTD.**



### Spring Shave & Bath & Flea Bath Sunday For Dogs

Now is the time to give your dog relief for the summer. A bath and a shave or a flea bath only and your dog will thank you.

Your friend may still be wet when going home so don't forget to bring a towel!

Sunday June 9th  
12:00 p.m. - 3:00 p.m.

No Appointment Necessary...Grooming & Training Consultations Available at 3:00 p.m.  
Take a tour of Key Peninsula's Premiere Animal Lodge

12615 134th Avenue KPN (Between Key Peninsula Highway and Highway 302)

(253) 851-9170

(Mon, Tue, Thu, Fri 9:00 a.m. - 6:00 p.m.)

Sat 10:00 a.m. - 4:00 p.m.

Sun 10:00 a.m. - 12:00 p.m.

Wed by appointment only

Travel in the right direction with a  
**HOME EQUITY LINE OF CREDIT**

Rates as low as **PRIME\***  
VISA Gold Card to access your funds  
No Annual Fee  
Potential Tax Savings

Use it for: Remodeling, Financing College,  
Debt Consolidation, Vacations,  
Cars and Boats.



Come to Sound for your Home Equity Loan and be entered to Win a 4-day Cruise!

Compliments of  
The Cruise Center  
of Puyallup and  
Royal Caribbean  
INTERNATIONAL



**SOUND**  
CREDIT UNION

Key Center  
8920 Key Peninsula Hwy N

www.soundcu.com  
(253) 383-2016



**YOUR FINANCIAL PARTNER**

Subject to credit review. Your rate and credit limit will be determined based on individual creditworthiness including income, debt ratio, employment and ability to pay debts. Sound Credit Union is a member of the FDIC. Sound Credit Union is a member of the National Credit Union Administration. All services are provided by Sound Credit Union, a member of the Sound Credit Union system. All services are provided by Sound Credit Union, a member of the Sound Credit Union system. All services are provided by Sound Credit Union, a member of the Sound Credit Union system.





# A View From Home

by Marty Marcus

Well, I guess my hypothesis was wrong. For a number of years I've entertained the idea that the main reason so many Native American tribes were building and operating casinos was so they could make enough money from our predilection for gambling that they would eventually be able to buy back much of the good land we forced them off of back in the nineteenth century. A pretty cool idea, actually. A lot better than resorting to violence to get it back.

But when I look at the information recently published about what the Puyallup Tribe has done with funds earned by their Emerald Queen Casino, a totally different picture appears. They have not only contributed thousands of dollars to various organizations, running the gamut from Amnesty International to the Zoological Society, but have poured hundreds of thousands of dollars into such local needs as street improvements in Tacoma, a new fire truck (\$185,000) for the City of Puyallup, Fourth of July and Daffodil Parade celebrations and the United Way.

While donating funds to more than two dozen organizations and assisting local municipal projects, they have also operated a number of ongoing projects offering direct support for tribal members. These include health services for children, higher education and vocational education opportunities for young adults, low-rent housing and assistance with down payments on home purchases. Also available are job placement services, apprenticeships and other training programs, and support for caregivers and elders who want to maintain dignity and independence as they live in their own homes.

But while the Puyallup Tribe continues to increase the services they provide for their tribal members, and continues their generous donations to other organizations and to various municipal projects, our county, state and federal government agencies are decreasing their support for these same kinds of services.

Maybe the government ought to hire the Puyallup Tribe to show us how to run the country.

## Fishermen's Breakfast A Success

The annual Fishermen's Breakfast at the Key Peninsula Sportsmen's Club was a huge success this year, thanks to the support from our community. 376 people were served an "all you can eat" ham, eggs and pancake breakfast with lots of fruit, juices and great coffee. The two-day rummage sale was also a big success.

The Key Peninsula Sportsmen's Club has been a member of the Pierce County Sportsmen's Council since 1947. The breakfast has been an annual event for many years and also serves as an opportunity for many of the area's old-timers to meet and reminisce.

The board of directors and club members wish to thank everyone who supported the annual fund-raiser. Your support has made it possible for two young people to attend summer camp on Orcas Island this summer and helped provide other services to youth in our community. Again, thanks for your support.

## KEY PENINSULA NEWS

To Subscribe, Please Write,  
 Call or FAX: *Key Peninsula News*  
 17010 S. Vaughn Rd.  
 P.O. Box 3, Vaughn, WA 98394  
 (253) 884-4699  
 FAX: (253) 884-4053

Key Peninsula News is published monthly by the Key Peninsula Civic Center Association at the Key Peninsula Civic Center in Vaughn, Washington. Copyright 2002 with all rights reserved. Reproduction of editorial or graphic content in any manner without permission is prohibited. Annual subscriptions (12 issues) are available for \$10.00 and are mailed First Class. Copies are mailed presort standard to residents and POBox holders of the Key Peninsula. Single copies are available at the newspaper office in the basement of the Civic Center annex and at various distribution points located on the Key Peninsula. Approximately 18,000 people live in the distribution area. Submission of articles is encouraged and the deadline for all material is the 20th of the month.

### STATEMENT OF OWNERSHIP, AND OPERATION OF THE KEY PENINSULA NEWS

1. THE KEY PENINSULA NEWS is a community newspaper, owned and published by the KEY PENINSULA CIVIC CENTER ASSOCIATION, a non-profit, 501-C3, corporation with main offices in Vaughn, Washington. The name, goodwill and any copyright assets that may exist pertaining to the NEWS are among the financial assets of the KEY PENINSULA CIVIC CENTER ASSOCIATION.  
 2. The NEWS shall be entirely free of political bias, and shall advocate no particular religious point of view. Further, its service will be open to all local organizations and residents, subject to the availability of space and generally accepted good taste and legal considerations.

### OUR GRATEFUL THANKS TO ALL WHO CONTRIBUTE TO THE KEY PENINSULA NEWS!

Editors: Marty Marcus, Ann Waldo  
 Ad Sales: Bob Stackhouse  
 Production: Alice Tramil  
 Staff Reporter & Photographer:  
 Hugh McMillan  
 Staff Cartoonist: Liz Kassler  
 Proof-readers: Marty Marcus, Ann Waldo  
 Accounting: Vicky McChung

The opinions expressed herein are the opinions of the writers and do not necessarily reflect the views of the publishers or staff. All letters to the Editor must be signed and include a daytime phone number for verification. No anonymous letters will be published. Submissions are used on a space available basis and may be edited if used. THE KEY PENINSULA NEWS reserves the right to edit letters for length and content and no religious or political material will be printed. Mail letters to: P.O. Box 3, Vaughn, WA 98394.

## KEY DATES — 2002

Those marked with an \* are held at the K P Civic Center  
**BUSINESS & PROFESSIONAL GROUPS**

KP Business Assoc. 1st Friday @ 7:30 am Home Port Rest.  
 3rd Friday @ noon Horseshoe Lk Rest.  
 KP Firefighters Assoc. 4th Weds @ 7 pm Key Ctr Fire Sta.

### CIVIC ORGANIZATIONS

Ashes 1st Thurs @ 10:30am Key Ctr Fire Sta.  
 Boy Scouts #220 Tues 6 to 8pm KPCC\*  
 Brownies Mondays 3:30-4:30 KPCC\*  
 Cootiettes 3rd Thurs @ 7pm KPCC\*  
 KPCCA Exec Comm 1st Mon @ 7pm KPCC\*  
 KPCCA Board 2nd Thurs @ 7pm KPCC\*  
 KPCC Board 2nd Mon @ 10am Comm House-Home  
 KPHC Board 4th Thurs @ 7:30pm Health Ctr  
 KP Lions Club 1st&3rd Weds @6:30pm KPCC\*  
 VFW & Auxiliary 2nd&4th Mon @ 7pm KPCC\*

### COMMUNITY SERVICES

Angel Guild 4th Mon @ 10am Key Ctr Library  
 AWANA Weds-6:30-8:30 KPCC\*  
**Children's Home Society**  
 Family Resource Ctr Mon thru Fri 9-4 KPCC\*  
 Clothing Bank Mon thru Fri 9-3 KPCC\*  
 Healthy Families/  
 Parent Connection 2nd Thurs 10-11:30 KPCC\*  
 Indoor Park Tues & Thurs 9:30-11:30 KPCC\*  
 J.U.M.P. (Juveniles United through Music and Poetry) KPCC\*  
 Lending Library Mon thru Fri 9-3 KPCC\*  
 Little Buddies Tues 3:30-5 KPCC\*  
 Weds 3-5:30 Evergreen Sch.  
 Parent Support Group 3rd Fri 7-8pm KPCC\*  
 Relatives Raising Children 2nd Mon 1-2:30 KPCC\*  
 Tea Time Thurs 4-5 Evergreen Sch.  
 Women's Support Group Mon 4-5 KPCC\*  
**Citizens Against Crime/**  
 Citizens Patrol 3rd Thurs @ 7pm Key Ctr Fire Sta.  
 Food Bank Tue-Wed-Thur-Fri 10-3 Community House, Home  
 Hot Lunch for Seniors Weds & Fri @noon Comm. House, Home  
 Food & Clothing Assistance Call 884-4440 for more info  
 Immunizations (FREE) Thur 10-4 GH Urgent Care  
 IMPact Key Peninsula 1st Tues @ 9am Lakebay Comm. Church  
 Help for Victims of Domestic Violence - Call 884-5086  
 Key Ctr Library 884-2242 Tues & Weds 11-8, Thurs & Fri 11-6,  
 Saturday, 11-5 Key Ctr Lib.  
 K P Baptist Bible Study Weds 7-8:30pm KPCC\*  
 KP Baptist Church Sun 8:30-1:00 KPCC\*  
 K P Well Child Clinic Tues @ 9am Key Medical Ctr.  
 PEP-C GH/KP Emerg. Comm. 3rd Sat 10-2 Kimball Dr. Fire Sta., GH  
 There Is Hope/  
 12-Step Christian Support Group Thurs @ 7pm Lakebay Chris. Assembly  
 WIC (Women, Infants & Children) Tues 8-4 VFW Rm, KPCC\*  
 Call 884-3835 on Tuesdays for an appointment

### PUBLIC MEETINGS

KP Fire Commissioners 2nd Weds @ 7pm Key Ctr Fire Sta.  
 Second Mon after the 2nd Weds @ 4pm Key Ctr Fire Sta.  
 KP Parks & Recr Commission 2nd Mon @ 7pm Vol Park Annex

### SELF-HELP GROUPS

Alcoholics Anonymous Tues & Thurs 7pm to 8 pm @ Lakebay Comm. Church in Home  
 Overeaters Anonymous Weds @ 7:30pm St. Nicholas Church, GH  
 Peninsula ALANON Tues @ 1:30 Lutheran Church, Purdy  
 Contact Norma @ 884-2205 for more info.  
 T.O.P.S. Tues weigh-in @ 6:15pm, Meeting @ 7pm KPCC\*  
 T.O.P.S. Tues @ 9am Fire Station #3, Home

### SOCIAL & HOBBY GROUPS

Bayshore Garden Club 3rd Fri noon Longbranch Improv Club  
 for more info call Sylvia Retherford @ 884-2487  
 Karate Mon. & Thurs 7-9 PM KPCC\*  
 Key Ctr Duplicate Bridge Club Tues eves(884-2663) Key Ctr Library  
 Key Singers Tues 7-9pm (Jo Sturm @ 884-1350) Longbr. Comm. Church  
 KP Historical Society 1st Thurs @ 7:30pm Museum @ KPCC\*  
 Museum Open Thursday & Saturday 1-4 (and by appt - 884-4538)  
 Lakebay Fuchsia Society 1st Thurs @ 7pm Key Ctr Library  
 Longbranch Improv. Club 3rd Weds @ 7pm Longbranch Improv. Club  
 Peninsula Neighbors 2nd Tues @ 10am Fire Sta. #4, Longbranch  
 Ruth Circle Meeting 3rd Mon @ 10am Bible study, lunch & meeting  
 at noon Longbranch Church  
 Senior Society Luncheon Thursdays @ noon KPCC\*  
 Skate Night Fridays 6:30-9pm KPCC\*  
 Vaughn Bay Garden Club Call 884-5403 for more info  
**NOTICE:** We have revamped the Key Dates Listing. If you have additions or corrections to suggest, please mail them to Key Dates, P.O. Box 3, Vaughn WA 98394, or Fax to us at (253) 884-4053.



# PHS Senior Receives Top Engineering Awards

Ryan Wistort, Peninsula High School senior, recently brought home several top awards from the Intel International Science and Engineering Fair in St. Louis, Ky. for his Autonomous Search and Rescue Robot.

Along with five other students from Washington State, Ryan qualified by being the top entry in the Washington State Science and Engineering Fair in April. Ryan states that he is the first student from this part of the state to win such recognition. The prizes included the first place US Army

Airforce Engineering Award (\$3,000), a third place overall Engineering Award (\$1,000) and a special award from the International Electrical Engineers Association (\$100). That made a total of \$4,100 - very impressive!

Ryan says he has always liked to take things apart and put them back together and to fix broken things, especially electronic devices. He has been working on robots for some time and said it took about \$1,200 and 500 hours of work to construct one. He also enjoys running and works out regu-

larly at the Gig Harbor Athletic Club.

Ryan plans to go to the University of Washington in the fall and will major in - guess what? - Electrical Engineering.

The staff at PHS are very proud of him and we join them in wishing him luck in the future.



**TAX TIPS**  
By  
**Mary & Myrtle Keizur, CTP**

Believe it or not, the IRS has improved one of their services - getting the issuance of your Employer Identification Number. You can call tollfree (866) 816-2065, Monday thru Friday from 7:30 A.M. to 5:30 P.M. or you can fax IRS Form SS-4 to the fax number shown on the new revised form. You can let your accountant do it for you.

If you are working for an employer and fill out a W-4 telling the employer what amount of deduction to take out of your paycheck but still end up paying income tax every year, maybe you should decrease your deductions (for dependents). If you have already done this, you can also specify an additional amount (like \$25.00) to be taken out of your check to help you break even on your tax return.

## Reminders Regarding The Fire Department

from Ruth Bramhall

I know you have been waiting a long time to see the last Fire Station to be built in the North End of District 16. It really looks like that might be going to happen this year. With a new building, in a different spot, it will need some landscaping.

When we built the last three stations, the community stepped forward and donated time and plants, shrubs and trees. As the weather gets warmer and you spend more time in your garden, or when you are out shopping for something new for your garden, consider something you could donate to the fire station. You can donate it in memory of someone or be recognized as the donor, if you wish. The station is in the Lake Katherine/Wauna area, so it would be nice if some local people would step forward and offer help or materials.

Some of you may know that this is the 50th anniversary of your Fire Department. There will be an number of activities going on - open houses at different times at different stations, demonstrations of equipment, educational materials and question and answer sessions.

In addition, there will be recognition of all of those who have spent 5 years or more with the Fire Department. What is really needed in this regard is the current addresses for all these people. If you are one of the people who have, in the past or at the present time, served 5 or more years in Fire District 16, please call us and let us know your current mailing address, (253) 884-2222 or (253) 857-5184.

REMEMBER, FIRE FIGHTERS MAKE HOUSE CALLS, SCHOOL CALLS AND BALL PARK CALLS. Stay where you are and let them come to you.

## 2nd Annual Scam Jam in June

Each year millions of Americans fall victim to marketplace fraud. Education and prevention are the keys to stopping con artists, so the Better Business Bureau Education Alliance is hosting a one-day, free, anti-fraud seminar and trade show. Scam Jam offers the tools consumers need to protect themselves in six specific areas including identity theft, investing, Medicare, telemarketing and charitable giving.

Presenters will include Herb Weisbaum, KOMO AM 1000's Consumer Man and Connie Thompson, KOMO 4 News' Buyer Beware Reporter. Scam Jam will be held on June 12th from 8:30 AM to 3:30 PM at the Seattle Center in the Northwest Rooms. For more information call the Scam Jam Information Line at 206-436-5438.

## KPMS PTA Invites Parents of New 6th Graders

The PTA at K P Middle School would like to invite the parents of upcoming 6th graders to their meeting on Wednesday, June 12th at 6:00 PM in the KPMS library. Election of officers for the 2002-2003 school year will be held at that time. Anyone interested in running for office should contact Kristen Bottiger at 884-5420 soon.



**Close to Home**  
**ESPRESSO**

Mon. - Thurs. 5:30 AM - 5:00 PM  
Fri. - 5:30 AM - 5:30 PM  
Sat. - 7:30 AM - 5:00 PM  
Sun. - 8:00 AM - 5:00 PM

Next to Wal-Mart in Key Center

**The TAX SHACK LLC**  
14203 Purdy Ln. NW  
next to S.A.V.E Thrift Store

Kathy Hendrickson CTP  
John Hendrickson CTP  
Tara Hendrickson CTP  
**(253) 858-1553**

Specializing in Individual and Small Business Taxes, and Bookkeeping Services  
OPEN YEAR ROUND

REFUND ANTICIPATION LOANS AND E-FILE AVAILABLE

Serving the Peninsula Since 1986

**e-file** Visa/MC accepted

## Vacation Rentals

Located in the waterfront community of Purdy  
Minutes from Kitsap & Key Peninsula Attractions  
1 & 2 Bedroom Suites • Daily, Weekly or Monthly  
Restaurant Next Door • Behaved Pets Welcome • Satellite TV

### WESTWYND Motel & Suites

www.westwyndmotel.com  
253-897-4047 • 800-468-9963 • 6703 144th St. NW, Gig Harbor



*Beautiful Floral Creations for that Special Day!*

**Romantic Themes for Any Occasion**

**Weddings \* Anniversaries Graduations Summer Parties**

Specializing in garden & home settings

Free In-House Consultations  
Professional & Friendly Service



**SUNNYCREST**  
NURSERY & FLORAL

884-3937 • Located in Key Center







## Sports Injuries.....

**Chiropractic to the Rescue!**

by Robert B. Campbell, D.C.

Each year some 17 million people suffer from some sort of sport-related pain. It's no wonder, with 500 muscles and 206 bones, not to mention joints, ligaments and tendons all getting into the physical-stress act. Generally, the best advice would be not to overdo any activity. If you do, and pain results, consult with your health care practitioner at the earliest opportunity. An existing condition you're aware of could develop into something much worse. Also, don't forget to warm up before starting any strenuous activity. Some of the most common problems include: Tennis Elbow, tiny tears in the tendons of the forearm muscles near the elbow which are accompanied by chronic inflammation and an inability to hold or control a tennis racket correctly; Runner's Knee, a form of tendonitis accompanied by soreness and swelling in the front of the knee and around the kneecap; Badminton Back, the unbalanced muscle buildup caused by most racket sports, often leading to distressing lower back pain; Pitcher's Slip, the most misdiagnosed malady due to a mechanical abnormality in the arm or the muscle fatigue due to insufficient warm-up procedures.

For more information, call (253) 884-2144.

**KP Business Association**

by Nancy Lind

Joanne Clark, Postmaster of the Vaughn Post Office, was the keynote speaker at the KPBA's May lunch meeting at Horseshoe Lake. She presented some interesting statistics on the operation of our Postal Service. For example, there are 300,000 letter carriers who provide service six days a week to 140 million addresses. Nine million people work in the mailing industry, a \$900 billion industry.

One of the concerns she brought up was the apparent inflexibility of the industry to grow and the reluctance of some special interests to change. She said the Postal Service must make some changes if they are to catch up to customer needs. There are changes currently being considered that will create a more commercially run business, be more productive, have more reasonable terms, generate new revenue, create flexible pricing based upon demand, and be more convenient to customers.

A transformational process is in the works that will be a combination of federal and private partnering, providing a business model that will perform more efficiently. Closing some facilities and providing alternate services could save millions of dollars. She discussed the use of bar codes and why it's cheaper when machines do the reading, and how to design an envelope format for assured delivery.

The KPBA meets at the Homeport Restaurant on the first Friday of each month at 7:30 AM for breakfast and at the Horseshoe Lake Bar & Grill on the third Friday of each month at 12 noon for lunch. Everyone is welcome to attend these business meetings and we encourage you to become a member.

**Discover Our "Personal" Touch For Pain**

Auto Accidents  
Personal & Work Injuries  
Serving the Key Peninsula  
For Over 21 Years



We Are Open 24/7 For  
Emergencies. We're Here  
When You Need Us  
Anytime, Day or Night!

**Dr. Robert B. Campbell, D.C.****5110 Lackey Rd. KPN, Vaughn, WA**

Call Today 884-2144 For A Free Preliminary Exam  
and Free Massage for all new patients.

**Christy G. Campbell, LMP** Specialty in Injury Treatment,  
Myofascial Release, Swedish Relaxation, Trigger Point  
Therapy, Deep Tissue Massage  
*Gift Certificates Available*

**ANGEL GUILD  
THRIFT SHOP****9013 KPHN, Lakebay  
in the KP Corral**

Open Wednesday through Saturday  
9:00 AM to 4:00 PM  
Effective June 1st

Gently used clothing, shoes, jewelry, appliances, toys,  
books, linens, knick-knacks, and just about anything  
you can think of.

**NEW MERCHANDISE IN SHOP DAILY.****Mid-Year Resolutions**

by Mary Nelson

Guess what time of year we are approaching? The halfway point of the year is just ahead and it is time for "Mid-Year Resolutions."

Were losing weight and better health on your resolution list for this year? Are you redefining what you want out of life? Maybe illness or the troubled times have caused you to change some of your priorities.

If you are one who feels that better health and more care for your body are important goals, you might like to try getting some help. This is just what your local T.O.P.S. chapter is for. We help you back up those resolutions with positive actions.

Your local Morning TOPS chapter meets at the Home Fire Station on Tuesdays from 9:00 to 10:30 AM. TOPS is a support group for people who want to lose weight. We have a suggested diet program, but we encourage you to follow whatever plan your doctor recommends. With programs and contests, songs and speakers, you are surrounded with friends and fun. You will go to get encouragement, and your presence there will be an encouragement to others. Men and women from 7 to 90+ years are welcome.

Two people you will meet when you come to our meeting are our celebrities. **Andrea Davies** was our best loser this month and **Sharon Brooks** came in second. These successful ladies are fairly new members and we are delighted to see them taking advantage of the TOPS encouragement and suggestions. They are going to have healthier, slimmer bodies by the end of the year.

**HOW ABOUT YOU????**

If you have any questions about T.O.P.S. please call **Dottie** at 884-1721 or **Janet** at 884-9606. Or just stop by on Tuesday morning and ask a TOPS loser!!!

**LIVING AND  
LEARNING  
ON THE  
KEY PENINSULA**

by Dale Skrivanich

Come celebrate the start of summer at the quarterly membership meeting of the Key Peninsula Historical Society and Museum. The date is June 22nd, 12:00 to 4:00 P.M. at the Key Peninsula Civic Center and, if the weather is nice, we will meet outside on the lawn. We hope to see you all at noon. We will start with our usual social hour, followed by a short business meeting and then, the program which will be The History of Oyster Farming on the Key Peninsula.

The Historical Society, along with several other local museums has been invited to participate in an exhibit featuring our museum and the history of the Key Peninsula. This exhibit will be at the Washington State Historical Museum in Tacoma in the fall. If you would be interested in helping put our part of the exhibit together, please call Dale Skrivanich at 884-2712.

Keep an eye out for new signs featuring historical locations on the Peninsula. The Gig Harbor/Key Peninsula Chamber of Commerce has asked the Historical Society to be a partner in this new signage campaign on the Key Peninsula. There will be six to eight points of historical interest chosen on the Peninsula with a brochure describing a self-guided tour.

If you are interested in becoming a member of the Historical Society or volunteering at the Museum, please call Barb Hanna at 884-4399 or Shirley Olson at 884-2481. The public is invited to attend the monthly board meetings on the first Thursday of each month in the Museum at KPCC.

The Museum is open on Thursdays and Saturdays, from 1:00 to 4:00 P.M. or by appointment. Call Tim Kezele at 884-4538 for information about our activities.

**Instep Dance and Key Peninsula Civic Center** is offering the Wonderful World of Social Dancing. Lessons every Thursday at K.P.C.C.

Classes starting June 27, 2002 through August 8th, 2002.

6:30 to 7:20 East Coast Triple Time Swing

7:30 to 8:20 Waltz

\$45.00 Per Person for each 6 week Class

\$10.00 Drop In Per Class \*No Partner Required!

Register at K.P.C.C. 884-3456 or Instep Dance, Doug Henry 884-9236

Doug Henry Instructor

FREE Beginning East Coast Swing Lesson at 7:00 PM, before the Jazz In June Dance, June 1st, 2002.

**AFFORDABLE PET GROOMING***"Your Pet is the heart of our business"***NOW OPEN IN KEY CENTER**

(Over 30 yrs. experience in all breed Pet Grooming)

**\$3.00 OFF Haircut** - If you bring in this ad.

Expires June 15, 2002

**884-4844**

8912 KPN, Suite #2  
Key Center, WA  
(Next to Shear Magic)

1919 Mildred W. #F  
Tacoma, WA 98465  
(Over 30 yrs. at location)





## THE LAW COLUMN

by Michael Misner

Have you had a chance to read your copy of the U S A Patriot Act yet? It's a huge new law and much of it deletes or adds words to existing legislation requiring the reader to wade through a ton of legalese to really know what the Act means. Frankly, I haven't read the whole text, but I have read some of it as well as numerous summaries and want to pass along some thoughts.

First, the title is an eye-popping acronym for "Uniting & Strengthening America by Providing Appropriate Tools Required to Intercept & Obstruct Terrorism" or, USA PATRIOT. Second, it is not the same thing that Congress passed right after the terrorist attacks of September 11th, in which President Bush was authorized to use the Armed Forces for "all appropriate force against those nations, organizations or persons *he* determines planned, authorized, committed or aided the terrorist attacks that occurred on September 11th" That was a joint resolution of the House and Senate and is known as the September "Authorization for Use of Military Force."

Third, neither of them are the same thing as Attorney General John Ashcroft's decisions to eavesdrop on attorney-client conversations, to question as many as 5,000 people of Arab descent or Islamic faith, to expand his power to detain immigrants or to his decision to limit information available to the public under the Freedom of Information Act regarding those persons still held in custody.

Those three actions, when looked at together, demonstrate a deliberate shift in power from the Congress and the Judiciary to the Executive branch of our government. I believe most objective observers would come to this same conclusion.

Now that this has happened, the following two questions need to be asked: does the public know that this shift in the law is taking place, and if so, does the public want this change to occur? From my very limited viewpoint from the end of "B" Street in Home, I believe the answer to the first question is "no" and the answer to the second question is "probably." From talking and listening to a lot of people since 9/11, I haven't met anyone who has even read the Patriot Act or the Joint Resolution. Not one person has read them and yet I have also not met one person who has expressed opposition to them.

On the one hand, I think the public is concerned that our country could quickly become as bloodied as Israel if we don't act, by all means necessary, to ensure our safety. If enhancing the President's power provides us with more safety than not expanding his role, then so be it. We are in a "war" and the public's survival must be our first concern.

On the other hand, have we created new laws, the consequences of which could be very unfair to many of our fellow citizens and to the freedoms provided us by the Bill of Rights?

Yet some will say, "So what?" If some people have to pay a price that ultimately proves to be unfair, isn't that a legitimate consequence that we must be prepared to accept given the fact that each one of us could be walking around with a big bull's-eye hanging around our neck?

Then again, if people raise questions about these laws, does that make them un-Patriotic as has been implied in statements by the very persons now charged with enforcing the laws?

Stay tuned, film at 11:00.

## Wanted

5/7/02

### Small Lake Association Representatives

The Key Peninsula, Gig Harbor, And Islands (KGI) Council is trying to contact representatives from small lake associations.

The KGI Council is forming a committee of small lake associations to determine common problems, that can be addressed as a group.

The KGI Council is an advisory organization that works with Kitsap County, City of Gig Harbor and Pierce County in order to determine problems in their watersheds and suggest solutions.

Small lakes as a committee of the KGI Council will have a voice in those discussions.

Please have your lake association representative contact:

William R. Higday, Vice Chairman KGI Council  
6827 Whitmore Dr. NW  
Gig Harbor, Wa. 98335  
Phone: 253-853-3261  
Email: patnbillh@earthlink.net

## Some Stuff You May Not Have Known About Where You Live

The Key Peninsula-Gig Harbor-Islands Watershed Council (KGI) has gathered some facts and figures about this watershed (and Pierce County) that we residents may not have known. Take a look.

There are about 50,000 residents on 101,000 acres with 144 miles of shoreline. There are 11 public recreational shellfish beaches and 12 commercial growing areas. In 1992, Pierce County had 23,263 registered boats, at least 15 marinas and 8 boat launch ramps.

Zeroing in on just the KGI watershed, 71% of boaters surveyed at Penrose Point on the Key Peninsula said they normally dump sewage overboard while in the main waterways. (A \$2,000 fine if the Coast Guard catches anyone doing that.)

There are about 17,000 "on-site sewer systems" in the KGI watershed area, with a failure rate of 3-5%. In the areas where restrictions have been placed on shellfish harvesting, the sewer system failure rate has sometimes reached 40%.

The average household produces about 26.5 pounds of hazardous waste per year. That adds up to about a half million pounds for the KGI area. In 1997, Pierce County collected nearly 90,000 pounds of this hazardous waste, but if millions of pounds were produced, where did the rest of it go? The EPA says that 20% of pesticide use is from households. Household use is generally about 5 times as much **per acre** as commercial use.

The total runoff from a one acre parking lot is 16 times as much as from an undeveloped meadow. The KGI watershed is drained by some 50 small streams, most of which are less than 1 mile in length. There are 124 group A and 334 group B water systems and 842 individual wells in the KGI watershed area. Some of these wells are already experiencing seawater intrusion. If groundwater use in the county in 1994 was already 55% of the total available groundwater rights, and the population in Pierce County is increasing by 27 persons per day, what does this tell us about the availability of water in the future?

**WANTED:** Photos and items of local - Key Peninsula - news that you would like to see in the KP News. Deadline is the 20th of each month; earlier is better. Send to us at P.O. Box 3, Vaughn WA, 98394. Please include name and phone number for reference.



## Create a ..... Summer Oasis

*Feel the welcomed, cooling effect of a fountain or waterfall on those hot, dry, summer days & evenings*

Ponds - Preformed  
- Liners  
Fountains - Concrete  
Freestanding & Wall  
Pumps - All Sizes

POND PLANTS  
FLOATING & POTTED

ACCESSORIES



**SUNNYCREST**  
NURSERY & FLORAL



(Just 20 minutes from downtown Gig Harbor)

Mon. - Sat. 9 a.m. - 6 p.m.  
Sunday 11 a.m. - 4 p.m.

**884-3937**

Open every day  
Located in Key Center



## The Garden In JUNE 2002

by Sylvia Retherford  
(253) 884-2487



Early to mid-June is the time to sow seeds for the winter vegetable garden. Our Key Peninsula climate is pleasantly suitable for such a food source from October to April. There is a large variety to choose from, including Brussels sprouts, broccoli, cauliflower, kale, radicchio and root crops such as turnips, parsnips, carrots and leeks. The ornamental cabbages and kales are beautiful, as well as edible, for decoration on salads. Starting seed now can lead to busy work, keeping the seed rows and small plants watered, weeded and thinned, but it will be worth it. Once September rains come, the plants will take care of themselves, especially if the snails and slugs have retired.

The spring vegetable garden is now providing ample spinach, lettuce, green onions, peas and new potatoes if they were planted early enough.

Rhododendrons and azaleas are displaying their many colors. Our region is unusually favorable for them, while those in other areas must provide special attention to water, soil acidity and shelter from freezing weather. Our irises and early lilies are in bloom.

Scotch broom colors our waste places and roadsides. It is a pest to some, but it grows quickly on disturbed soil and helps prevent soil erosion. Broom is a relative of peas, clover, beans and lupines, all of which bear small white colonies of nitrogen fixing bacteria on their roots. They "fix" nitrogen from the air into compounds which they use for growth, as well as leaving a useful supply in the soil for other plants.

### Septics Workshop at KPCC

The Tacoma-Pierce County Health Department is sponsoring a workshop on how to maintain a healthy septic system and how to get your septic system inspected. The date is Saturday, June 29th, from 10 AM to 1 PM, and the location is the Key Peninsula Civic Center. The workshop will include the removal of a cap on the Civic Center's septic system and an inspection of that system. [Ed. note: That may be the highlight of the workshop.] For additional information, call Frank Dibiase at 798 7674.

### Vaughn Bay Garden Club

Vaughn Bay Garden Club elected officers for 2002/2003 at the May meeting. Joy Rakes continues as president, with Shirley Barbee and Anne DeLaney sharing vice-president duties. Retaining offices will be Colleen Slater, secretary, Kathie DuPriest, treasurer, and Rose Malmgren, historian. Darlene Brown is sunshine chair, with Shirley Barbee assisting.

The memorial plaque, which has been placed in the entrance garden, will be dedicated on June 19, prior to the group tour to Bainbridge Nursery and Bloedel Reserve.

For information about the club, call 884-1527.

### Bayshore Garden Club

The Club will meet at the Longbranch Improvement Club at 10:45 A.M. on June 21st to carpool to Sylvia Retherford's home for a tour of her gardens and brown bag lunch. Address is 1608 A St. in Home, and you may go there directly. (Phone is 884-2487.)

Following lunch, we will carpool to the home of her daughter, Leila Luginbill, at 12312 188th Ave. off 302 near the Mason County line. (Phone, 884-4324.)

Guests are welcome.

### Lakebay Fuchsia Society

The June meeting of the Lakebay Fuchsia Society will be held at the Key Center Library on Thursday, June 6th, at 7:00 PM. The guest speaker for the evening will be Will Gibbs, an expert on *Triphylla* type fuchsias. Guests are welcome to attend.



## Support Your Local Businesses

### Key to Learning Childcare



in Key Center  
(253) 884-1184

Nurturing the skills to succeed in school...and life.  
20 years licensed childcare, references provided.  
Preschool and meals included.

**Helen Macumber**

\*located 1 minute from light in Key Center



Pierce County  
Office of the County Council

**KAREN BISKEY**

Councilmember, District No. 7

830 Tacoma Avenue South, Room 1046  
Tacoma, Washington 98402-2176

(253) 798-6654  
(800) 992-2456

FAX (253) 798-7509



### InStep Dance

Doug Henry, Instructor

Group Lessons • Private Lessons  
Wedding or Anniversary  
Choreography

P.O. Box 751 • Vaughn, WA 98394  
(253) 884-9256

### Almost Home Boarding Kennel



Extra Large Kennels  
Personal Attention  
Hours: 8:00 AM to 6:00 PM  
(253) 884-2633

Sandy & Nancy in Lakebay, WA



### Cinderella Cleaning Services

Homes  
Enhanced  
Lyubov by  
Popkov



(253) 884-1092  
(253) 377-1953

Cleaning houses,  
garages, yards, etc.  
Flexible hours to fit  
your individual needs.  
All for a very  
reasonable cost.  
References available  
on request.

### Domestic & Imports Black Forest Automotive

15317 Key Peninsula Highway  
Gig Harbor, Washington 98329

(253) 884-3431

Ryan Andreson

BULLDOZING  
BACK-HOE  
LOGGING



GRAVEL AND FILL DIRT  
LOG BULKHEADS  
SITE PREP

### JOHNSON BULLDOZING CO.

LAKEBAY, WASHINGTON 98349  
PHONE (253) 884-2362



DAVE JOHNSON  
(253) 884-3330



PHIL JOHNSON  
(253) 884-2607



### MR. MIKE'S FIX-IT

Call Mike Nelson ☎ 253-884-6863

HOME  
AND  
BUSINESS  
REPAIRS

- General handyman repairs
- Door & window repairs
- Locks fixed & changed
- Bathroom & kitchen repairs
- Gutters fixed & cleaned
- Pressure washing
- Emergency Services Available
- Lic. # MRMIKE\*990RD

(253) 884-2961  
(253) 851-2690



### Harbor Furnace SERVICE & INSTALLATION

TOM WILLIAMS

P.O. BOX 362 Lakebay, WA 98349  
P.O. BOX 1 Gig Harbor, WA 98329



Pretty Gardens, Part III

# The McKeller Garden

by Colleen Slater

When the sign in the delightful garden near the Children's Home Society was put in, passers-by asked who Mr. or Mrs. McKeller was. Old-timers didn't recognize the name, and members of the Historical Society didn't have a clue. The mystery was solved after careful investigation.

The original idea of having an attractive garden there blossomed when several Civic Center volunteers thought they could improve the unattractive area above the septic tanks. Loyd and Sharon Miller, Vicky McClung, and Betty Kelley went to work on it. Vicky contributed rocks, Loyd built two attractive wood planters to cover the septic lids, and everyone in the group brought in plants from their own gardens.

Shrubs, perennials and bulbs are the mainstays of this colorful garden. When the tulips in the planters are finished, Sharon sets in geraniums and annuals to carry the season forward.

The Civic Center Volunteer Garden would have been a mundane name for the unique display of plants and decorative objects, but the group came up with a combination of their names: Mc from McClung; Ke from Kelley, and ller for the Millers. *volla!* McKeller Garden is a memorial to the hard work of these volunteers to bring their vision to completion. Brian Heaven hauled and placed the rocks, and Dale Loy contributed two of the larger plants.

Lori Warkocki and Tim Kezele have given some assistance in weeding, but Sharon states that other volunteers are more than welcome to help maintain this special garden.

Volunteers are the mainstay in any community, and on the Key Peninsula, we are blessed with many in diverse organizations as well as individuals. These lovely gardens at the Civic Center are a loving tribute of volunteers who go "above and beyond the call of duty", putting in time, effort and resources into adding bright spots in the lives of all who walk or drive by our Community Center.

Take the time to thank these and other volunteers who contribute to a better way of life for all of us.



## To Your Health

by William F. Roes, M.D.

One of the tenets of modern medicine is that too much cholesterol in your blood is bad for you. The acceptable numbers have now been redefined, and the hope is that the new, more stringent guidelines will ultimately save lives. The National Institute of Health regularly reviews the guidelines, most recently in May 2001, and suggested new levels and standardized treatments based on a number of scientific studies.

Cholesterol is only one of the fats circulating in our blood. Doctors routinely measure what is called a lipid panel, which consists of total cholesterol, HDL cholesterol (the good), LDL cholesterol (the bad) and Triglycerides (the ugly - my apologies to spaghetti western fans). According to the new guidelines, total cholesterol should be below 200 in a fasting state, as should Triglycerides. The good cholesterol, HDL, should be over 40, and the bad cholesterol, under 100. There are other modifying factors such as diabetes, prior history of coronary heart disease and smoking, but basically using these guidelines, and knowing a patient's sex and age, there are tables that predict the risk of developing cholesterol related heart disease.

The new guidelines also suggest some modifications in treating elevated lipids (fats), but they still recommend starting with non-pharmacological treatments. This includes weight loss if indicated, exercise and a diet low in saturated fats and higher in unsaturated fats. Saturated fats are typically animal fats, those often solid at room temperature. Unsaturated fats such as olive oil, canola oil and corn oil can actually improve your lipid panel. The new guidelines suggest a trial of 12 weeks on a maximal diet therapy before instituting medications. The medications are effective, but often costly, and can have some side effects. Many people ultimately require them because of genetic makeup, but it does make sense to do everything you can to improve your lipid levels by changing your lifestyle before resorting to medication.

# Support Your Local Businesses

**Rototilling**  
**\$30/hour**  
*Courtesy Lawn Care*  
 Reliable Service & Reasonable Rates  
**884-4875**

**Windermere Key Realty**  
 the *only* local  
 Key Peninsula Real Estate Company  
 ready to meet all your real estate needs.

**Windermere**  
 Windermere Real Estate/Key Realty  
 Office: 884-3304

**SONNIA BEAN**  
 Certified Beauty Advisor & E.U.I.  
 (253) 884-2057  
 twomorebeans@juno.com  
 Serving/training since '94

**AVON**  
 Independent Sales Representative

**L & D PLUMBING, Inc.**  
 "PLUMBING & REMODELING"

**LLOYD D. MERRELL**

20411 - 17<sup>th</sup> ST. KPS  
 LAKEWAY, WA 98349  
 CONTRACT REG. NO. LDPLR\*055MC

BUS: (253) 225-3315  
 LICENSED & BONDED

Septic Systems \* Underground Utilities \* Site Preparation  
 Dump Truck Services \* Road Building \* Land Clearing  
 Stamp Burning \* Hauling

**ABBA**

Jobs 3-16 Jobs 3-12

**Backhoe & Dozing, Inc.**  
 (253) 851-4067  
 ABBARD105308

Port M. Beach  
 Licensed & Bonded

P.O. Box 671  
 Ilwaco, WA 98145

**CHARBONEAU EXCAVATING, INC.**  
**EXCAVATING SERVICE**

Road Building \* Developments \* Grading  
 Underground Utilities \* Foundation  
 Site Preparation \* Land Clearing  
 Stamp Hauling \* Dump Truck Service

LIC 8223-01-JE-EF-CE\* S220KUP  
 (253) 857-5125

11612 SR 302 NW  
 Gig Harbor, WA 98329

We'll Transport Your Best Friend

- To the vet
- To the groomer
- Personalized Service

*Nancy Wakefield*  
 Owner

**Pet to the Vet**  
 Custom Services

Phone: 253-857-9227  
 Cell: 253-222-2902  
 Fax: 253-858-2746

**Plummer**  
 Construction & Excavation

**Mark Plummer**  
 General Contractor/Developer

Excavation \* Land Clearing \* Septic Systems \* Site Development \*  
 Utility Installations \* Drainage Solutions \* Road Building \*  
 Stump Removal \* Mobile Home Installation \* Retaining Walls

Serving Pierce, Mason and Kitsap Counties

#PLUMMCE033PW (253) 884-5588

**TONY'S LANDSCAPING**

- Pruning
- Tree Cutting
- Weeding
- Total Lawn Maintenance
- Topsoil/Bark
- Soil/Seed

Residential / Commercial

**Tony Fuoco**  
 Owner

message: 691-1787  
 pager: 596-9943



# Old Timer's Day August 17, 2002

With all the other events and activities taking place throughout the summer, you will want to make sure you mark your calendar now for Old Timer's Day. This year, a few new activities have been added to the already popular event. The main event is of course the logging competitions and demonstrations, which take place all day. Professionals from the industry work their magic with cutting and falling events, marked both by accuracy and time. Other activities demonstrate the use of some of the 'old' logging equipment, steam engines and 'mules'. This is a must see for everyone!

The date is August 17, 2002 and everything will take place at the Longbranch Improvement Club in Longbranch.

Adding to the fun and competition this year is the new "Riding Lawnmower Race". Look for details on entries, rules and prizes soon or call the Key Peninsula Community Services at 884-4440. There will be limited entries for this event.

This entire event is sponsored by Key Peninsula Community Services located just south of the Home bridge in the old school house. This is their main fundraising event for the year. They conduct a raffle the day of the event which will include prizes such as a special trip for two, donations by local merchants and other items donated by local neighbors. Raffle tickets go on sale soon, so look for volunteers at local businesses to purchase yours.

For more information, call 884-4440.

## Historic Vaughn Church Public Meeting

The recent public meeting sponsored by the Historic Vaughn Bay Church was opened with rousing renditions of two spirituals by the Key Singers.

Joe Dervaes, registered agent of the church, moderated the meeting with about 70 community members in attendance.

Dervaes presented a brief history of what is now Vaughn Community Church and their intent to sell the historic church and property and build a new church in the Elgin/Minter area. He spoke of the organization of the Historic Vaughn Bay Church, organized nearly three years ago, and comprised of descendants of the original church families and other interested community members.

This newer church is not a "building preservation society", but rather a Protestant Evangelical church whose main aim is to hold services and minister within the community of Vaughn. One option for them is to purchase the property now held by Vaughn Community Church and maintaining that as a community church.

The meeting was to share ideas and survey possible support within the community for this new church and to maintain a church within the community.

The Historic Vaughn Bay Church is currently meeting in the VFW room of the Civic Center. For additional information on the church or issues, contact numbers are 884-5403 or 884-9303.

### Historic Vaughn Bay Church

A Community Gathering  
Worship Service  
10:30 a.m.

VFW Room  
Key Peninsula  
Civic Center  
884-5403

### KPCCA Executive Committee 2002

**President**  
Dave Stratford, 884-2566  
**1st Vice-President (Maintenance)**  
Lloyd Miller, 884-2536  
**2nd Vice-President**  
Tim Kezele, 884-4538  
**Treasurer**  
Vicky McClung, 884-1940  
**Secretary**  
Rick Krum, 360-895-3299  
**Members-At-Large**  
Phil Bauer, 884-9172  
Sylvia Haase, 884-3603  
**Past-President**  
Dale Loy, 884-4169/884-3937

### VENDORS WANTED

Yard Sale Items  
Spend the day, have fun and sell  
your items for \$10 all day.

Make your SWAP MEET worth it!  
Located at the corner of Hwy. 302 and Wright Bliss Rd.  
Across from the Texaco. Look for the white fence.

For more information call Jerry @ 253-884-3386



## TOPS News

by Jessica Schwabe

We want to say "THANK YOU" to Frankie Johnson for being our Publicity person for the past many years, for she has done a wonderful job. And we had to say good-bye to our Weight Recorder, Misty Gablehouse. We would also like to thank her for putting in so many long hours organizing the weight books. THANK YOU, Misty. Now we want to welcome aboard our new Weight Recorders, Marilyn Lyden and Carol Bischoff.

On another note, we had our annual election of officers, and we want to congratulate the following: Leader, Jena Henak; Co-Leader, Frankie Johnson; Secretary, Phyllis Tieman; and Treasurer, Peggy Gablehouse.

We had our annual rummage sale in April to benefit our Rallies that we attend yearly. Our WA State Queen, Colleen Spezia, had to give up her reign over the weekend of May 18th, but got to crown our new WA State Queen, Lorita DeRego, from Bremerton. Our WA State King is Don Lee from Goldendale.

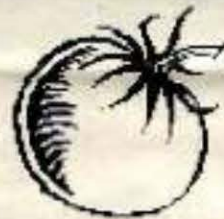
Our contest winner for March as the best loser was Marilyn Lyden. One of our teens, Jessica Schwabe, took the title of best loser for April. We have several members who are in the range of 10 pounds to reach goal. They are doing a terrific job.

The summer is right around the corner, and the swimsuit season is fast approaching. Come by and check us out on Tuesday evening at the Civic Center in the VFW room at 7:00 PM. We have a weigh-in at 6:15 and the meeting starts at 7 and ends at 8:00. TOPS (taking off pounds sensibly) is very affordable with annual dues of \$20 and monthly dues of \$5.

Feel free to stop by and check us out, or, if you would like to talk to somebody call 884-1345 or call the Civic Center for details at 884-3456. We've included a recipe for Chicken Vegetable Soup, taken from our TOPS News magazine. You'll find the recipe below. We look forward to seeing you.

### Chicken Vegetable Soup

- 1 small head cabbage, coarsely chopped
- 6 cloves garlic, chopped
- 2 medium zucchini, thinly chopped
- 2 medium carrots, coarsely chopped
- 2 medium celery stalks, sliced thin
- 2 medium onions, chopped fine
- 2 medium tomatoes, chopped
- 1 large skinless chicken breast, cut into small pieces
- 4 cups water
- 4 cups chicken broth
- 2 bay leaves
- 1/2 t. cayenne pepper
- Black pepper to taste



Combine all ingredients in soup pot. Cover & bring to a boil. Reduce heat and simmer 20 minutes. 10 (2-cup) servings. 1 serving = 78 calories (9 fat) or 1 very lean meat & 2 vegetable exchanges & 1 g total fat (2%), 0 saturated fat, 8mg cholesterol (3%), 445mg sodium (19%), 11 g total carbohydrate (5%), 3 g dietary fiber (15%), 4 g sugars, and 7 g protein.

Submitted by Evelyn Gramling, TOPS #AL 255, Gadsden

### Angel Notes

by Gerry Reeder

Thanks to our customers and your donations, we have had another excellent month. We have to admit that we have the best clothing, toys and household items at such reasonable prices. We are the best place to shop in our area. We will be featuring more antiques soon.

Our President, Betty Barkubein, is presenting 2 scholarship awards at Peninsula High School in May. Go kids, go! And we are funding a stage for the KeyFair in August.

We will now have a greeter at our meetings to welcome new members. She is Sandi Adams.

Our desire is to be more efficient so we are asking anyone with donations to leave things at the covered area in the shed at the back of the store, not in the shop or by the front door. Hours for donations are from 9:00 A.M. to 7:00 P.M. Store hours are Wednesday thru Saturday, 9:00 A.M. to 4:00 P.M.



### Longbranch Community Church

Key Peninsula Hwy South at 46th Street  
884-9339

Summer Worship Hour 10:00 a.m.

### Church Salmon Bake

July 27, 2001 2-6 pm

at  
Longbranch Improvement Club Hall

For Donation and other information  
Call 884-9339



# Key Peninsula Parks Plan

by Nancy Lind

**We need your help. Please share your knowledge!** The Key Peninsula Parks and Recreation District is developing a comprehensive park plan for the future of our region. We need your assistance in identifying **all local resources** such as:

- \* state parks, DNR lands, county properties, other tax title holdings
- \* utility corridors, transport right-of-ways, logging roads, boat ramps
- \* schools, playgrounds, sports fields, community centers, leisure facilities
- \* public beaches, wetlands, lakes, rivers, streams, bluffs, slopes, trails
- \* historic sites, cultural resources, and any other point of interest

Come to a public meeting at the **Home Fire Station #3 - 3:00 to 5:00 P.M. - Saturday, June 1, 2002.**

This is NOT the time to voice your concerns or desires for the future; another public meeting to explore these topics will be held once all the existing resources are identified. Please come to this initial meeting to tell us what you know about the region.

If you cannot attend this meeting, and you have information to offer, please contact: Simon Priest, (spriest@krl.org) or (253) 884-6446 or Nancy Lind, (nancyind2000@yahoo.com) or (253) 884-3347.

**Key Peninsula Parks and Recreation District (KPPRD)** board meetings: 2nd Monday of the month, 7:00 P.M. at the Volunteer Park Annex.

**Friends of Rocky Creek (FORC)** meets 2nd Thursdays of the month, 2:00 P.M. at the Key Center Fire Station. Earth Day at Rocky Creek brought out 48 people. Lots of kids came and planted trees.

**Key Peninsula Trail System (KPTS)** meets 1st Thursday of the month, 7:00 P.M. June meeting is at the Wright-Bliss Fire Station.

**Trail walk** from Rocky Creek Conservation Area to Key Center - Saturday, June 8. At 10:00 A.M. meet at RCCA (SR 302 and 150th, Lake Holiday entrance).

**Volunteer Park** - Little League and Men's and Women's Softball are going full bore. Sign up for adult baseball now. Look for church youth co-ed league signup and an adult regular co-ed league signup. The lights on Field 1 should be up by now. Employees of Windermere Real Estate do a community project each year and on June 14th they are going to help assemble the new playground equipment. If there is enough interest, we will begin having Swap Meets on a regular schedule.

For information call the Park at 884-9240.

# Health Dept. On TV

The Tacoma-Pierce County Health Department has partnered with KBTC-TV, PBS, to produce a weekly television show. The show will be titled "Pulse- The Public Health Report," and will delve into the health issues prevalent within Pierce County [Ed. note: this includes the Key Peninsula]. The program will run in the twelfth largest market area in the nation, including King and Pierce Counties within Washington State. Viewers will see the show from Everett to Vancouver, with an additional outreach to Aberdeen and Hoquiam on the coast.

"This partnership will allow the citizens of Pierce County to become educated about health issues, and take an active role in keeping our community a safe, healthy place to live," said Dr. Federico Cruz-Urbe, Director of Health.

The show is the first of its kind in the nation, with government partnering to assist in the development of content. KBTC-TV, PBS, retains final editorial control of content, ensuring that the show will balance both sides of any issue up for a public vote. Using television as a medium will allow the general public to become aware of what programs are in place to deal with specific health issues. Topics slated for viewing this season include fluoridation, bio-terrorism, meth labs, tobacco settlement funds and many others.

With the assistance of the Tacoma-Pierce County Health Department, KBTC-TV will be able to garner footage not shown on the air in the past. Examples could be the mouths of under-privileged children from non-fluoridated areas, or viewing the inside of a house that was used for methamphetamine production.

All participants in the project view the partnership as a winner. Students will get valuable hands-on experience working with the project, the public will receive more information on how tax dollars are spent to solve health issues, and the South Sound area will once again have positive coverage of events in the region.

For those interested in viewing this television show, you will need to check your local listings. KBTC-TV, PBS, is listed on different channels, depending on how you receive your signal; Channel 28 if you are not on cable, Channels 3 and 12 on cable.

Jim Crabbe, Marketing Specialist, T-PCHD

**Cut Out And Mail or FAX**

## KEY PENINSULA NEWS WANTS YOUR OPINIONS

Do you read your *Key Peninsula News* ?

What do you like about it ?

What do you dislike ?

What would you like added ?

What would you like eliminated ?

What is your zip code ? (Circle one, please)

98329 98349 98351 98394 98395 Other \_\_\_\_\_

Other comments ?

Fill and Cut out Questionnaire and mail to the *Key Peninsula News* at P.O. Box 3 Vaughn, WA 98394. You can FAX your opinion at 253-884-4053 or you can stop by the Key Peninsula Civic Center and drop your opinion in the mail box on door.

Lisa's  
Fresh Express  
Deli



**COFFEE HOUSE**

**SUMMER HOURS**

MON. - FRI. 6AM TO 8PM  
SATURDAY 7AM TO 8PM  
SUNDAY 8AM TO 5PM

**THE SUMMER PICNIC BOX**

Order your picnic box from Lisa packed with all of your favorite items.  
Sandwiches, Cold Cuts, Salads, Chips, Cookies, Muffins, Fruit & Drinks

**ICE CREAM**

Lisa has both Dairy and Non-Dairy Ice Cream

Come in for a Delicious Ice Cream Sundae, Milkshake or Root Beer Float!

Or

The Incredible Espresso Shake!!!

**SATURDAY & SUNDAY MORNING PASTRIES**

Come in for a Hot Espresso or Coffee with Fresh Cinnamon Rolls, or Lisa's Famous 3/4lb. Muffins. Also Try the Express Breakfast!



## Wide Diversity At KPCC Non Profit Open House



Kathy Bauer, Marie Magnusson, and Britta Brones of Two Waters Art Alliance discuss plans with Jeff Harris. Photo by Hugh McMillan

The first annual non-profit open house at the Civic Center last month provided a good view of the diversity of community activities on the Key Peninsula. While the Lakebay Fuchsia Society did a booming business outside, about 30 groups - educational, hobby, church and service groups and public agencies - some old, some new, offered information and new opportunities to local visitors and shared ideas with each other. Among them were Fire District 16, celebrating its 50th anniversary by introducing the new map book of the Key Peninsula, giving great detail to our complicated and confusing network of roads. Another was the Two Waters Arts Alliance - artists, teachers, students, collectors, dabblers and dilettantes - beginning a summer program of lively fun with the arts.

[Ed.: For a listing of group meetings and activities in the area, take a look at our Key Dates on page 4.]

### Penlight Warning on Credit Cards

Peninsula Light Company has recently issued an alert to members to be aware of possible identity theft attempts by unauthorized phone solicitors. Phone callers posing as Penlight employees have been contacting Penlight members asking for credit card numbers and other information.

Karen Brandt, Customer Service Manager, says, "We want to remind everyone not to give out credit card numbers or any other personal information to anyone you have not personally contacted." She also noted that Peninsula Light does not call its members to discuss their accounts.

Anyone receiving such a call should immediately call Penlight's Customer Service Department to report it at 857-1525, or call the Sheriff's Department at 798-4941. For more information, call Karen Brandt at 857-1525.

### Another View

by Liz Kassler



"The only exercise I get lately is in futility!"

<http://lzkassler.com>

### YESTERDAY'S TEENAGERS!

Key Peninsula Senior Society  
by Jim Nolan @ 851-4847

Greetings from us Seniors. Here's our latest SENIOR SURVEY. The May meeting question was, "Who was the handsomest (for women) or most beautiful (for men) person you have ever seen?" Only four men were brave enough to reply: "Hedy Lamarr, Audrey Hepburn, my wife and lovely daughters and my next door neighbor's wife". The ladies answered: "Any man is beautiful IF he's available, Tyrone Power, Freddy Garcia, my second husband", and five of them said, "My husband." Hmmm. Considering that the rules stated, "Please do not list your mates," the results would seem to speak well of American men of the 20th Century — Yes?

A salute to STELLA BRENNAN, born in Guatemala and spent her youthful years there. Stella was able to fly to Guatemala in April to attend her nephew's wedding and reception in Guatemala City. She had reunions with many relatives from the US, Costa Rica and Guatemala, flew in a family helicopter to Lake Izabel where the guests swam in its warm water and watched the mysterious formation of waves daily at 3:00 P.M. (Nobody knows why.) Since her return, she is still walking on clouds. We hope she gets a chance to go back again before long.

On Saturday, May 18th, the Pierce County Health Dept. held a licensing class for prospective food handlers at the Civic Center. Quite a few Peninsula-ites attended, took the test and are now qualified -lawfully - to work in the Center's kitchen for public food-serving events. Several of our KP Seniors attended, paid the \$8 fee and are awaiting their licenses. They included Bob and Lou Mautk, Virginia Adkisson, Erna Dunn and Jim Blundell. You may be seeing them in the kitchen soon. (Chuck Williamson already has his license.) We appreciate this needed service from all of them.

The date of our KP annual PLANT SALE - for vegetables and flowers - will be Friday and Saturday, June 7th & 8th at the Minterbrook Yard, Garden and Garage Sale (just west of Minterbrook Oyster Co. on 122nd St.). A huge event both days. Watch for signs and prepare to stock up your gardens with healthy plants and other good stuff.

Let's hope that all we older citizens are able to laugh at and enjoy the stories that seem to poke fun at our inability to recall everything we should remember. So — The 96, 94 and 92 year old sisters lived together. Ellie was upstairs about to take a bath, put a foot in the tub, then paused and called down, "Was I getting in or out of the bath?" Mabel called up, "I'll come and see." But as she reached the landing, stopped and called down to sister Helen, "Was I going upstairs or down?" Helen muttered, "I sure hope I never get that forgetful - knock on wood," and then rapped 3 times on the kitchen table, and called out, "I'll come up and help both of you as soon as I see who's at the door!"

BYE BYE - That's it for this month, except to invite you Seniors to join us any Thursday Noon at the Civic Center for lunch, cards and socializing and especially to Party on June 20th for FATHER'S DAY.

### Camp Seymour Offers Community Swim And Instruction To KP Youth

YMCA Camp Seymour will offer Community Swim for local families and youth this summer. Community Swim runs from July 8th to August 23rd, Monday thru Friday, 1:00 to 2:00 P.M. The fee is \$1.00 per person per day. Admission is free for registered Learn to Swim students. This is a fun way to relax and cool off during hot summer! Families can enjoy some time together, and kids can practice their new swimming techniques.

Camp Seymour will also offer limited Learn to Swim classes — an opportunity to learn the basics of swimming and water safety — for youth ages 4 to 13 this summer. Lessons will be taught in a heated outdoor pool by qualified instructors under the supervision of the camp Aquatics Director. The cost for 10 lessons is \$45.00 per child for members of the YMCA of Tacoma/Pierce County. (An additional \$5.00 membership fee applies to children who are not members.) Lessons will be offered in two sessions: July 22nd to August 2nd and August 5th to August 16th (Monday thru Friday). Children registered for the Learn to Swim program also receive free admission (along with one parent or guardian) to the weekday Community Swim mentioned above.

For more information, contact YMCA Camp Seymour at (253) 884-3392. Camp Seymour is located on Glen Cove, near Key Center, at 9725 Cramer Road KPN.

Vaughn ECEAP/Preschool is now enrolling for the 2002-2003 school year. If your child is 4 years old by the 31st of August and you qualify, he or she could receive FREE preschool at Vaughn. For more information and an application, call Michelle at 884-5710.

### KPCC ASSOCIATION 2002 CALENDAR OF EVENTS

JAZZ IN JUNE  
KPCCA FIREWORKS DEMO  
FIREWORKS BOOTH SALES

June 1st  
June 29th  
June 29th - July 4th



## Lively Arts on the Key Peninsula

A new local group - The Two Waters Alliance - intends to bring more arts and creative activities to our area. Their summer program includes such diversified offerings as:

**Driftwood Beach Walk** - gathering driftwood and building temporary artworks

**Clay Day at the Beach** - digging and preparing the clay, forming and firing your piece

**The Scarecrow Show** - creating, displaying, writing and reading poems about the creations

**Kids' Printmaking** - various techniques

**Kids' Drawing** - outdoors if possible

**Adult Model Drawing**

**Open Mike** - participate or join the audience

**Movie Night** - drive-in without cars

**Key Peninsula Fair** - art events, demonstrations and displays, projects and art fun

Write to Two Waters, PO Box 868, Vaughn WA 98394 or leave a message at 884-3456 at KPCC.

Sounds like fun!

## Encore! Theater Show Coming Up

June 21st through July 14th, on Fridays, Saturdays and Sundays at 7:00 PM, Gig Harbor's Encore! Theater will present *Seven Brides for Seven Brothers* in the open air site at Collesmore of LifeCare, 2909 14th Avenue, Gig Harbor. This is a story set in Oregon in the early days of Western history.

For more information, tickets, etc., call 858-2282.

## Where To Pick Up A Copy Of The Key Peninsula News

- Bridgeway Market, Purdy
- Walt's-Lake Kathryn
- Cenex
- Burley Store
- Home Feed & Grocery
- SAVE Thrift Shop (nr PHS)
- Peninsula Light Company
- Wright-Bliss Texaco
- KPCC Office Lobby
- K P Historical Society Museum
- Key Center Library
- Albertson's - Borgen Blvd
- Home Country Store
- Walt's - Key Center
- Sound C U - Key Center
- Albertson's - Sidney & Sedgwick
- Windermere Realty @ Key Center
- Key Bank in Purdy

## The Virginia V Comes To Longbranch !!!

On Sunday, June 2nd, the Virginia V will be arriving at the Longbranch Marina about 11:30 A.M. Tugboat Joe will be escorting the Virginia V into the marina, and we hope to have some media folks to capture the event. We will have a band playing throughout the entire day.

There will be two afternoon cruises from the Longbranch Marina. The first will depart at 12:45 P.M. and the second at 3:00 P.M. Each of these cruises will go out for an hour and the band will go along to entertain. Cost is \$10.00 per person.

There will also be an early evening cruise leaving at 4:30 P.M. and returning at 7:00 P.M. It will feature a no host bar. The cost for this cruise is \$15.00 per person.

Dockside tours will also be available and on June 3rd and 4th, local school children of the Key Peninsula will be given tours of the Virginia V.

The Virginia V was originally built in 1922 at Maplewood Beach south of Olalla out of old growth fir. She holds many memories from service in this area and is full of nostalgia that we can all appreciate.

Tickets for these special events may be purchased at the Longbranch Marina, (253) 884-5137. (The Marina is not always staffed, so please call ahead.)

Come to the Marina on June 2nd to help welcome the Virginia V and share a rare moment celebrating Key Peninsula history !!!

## "Drive-By" Food Drive

Key Peninsula Lutheran Church will hold a "Drive-By" Food Drive on June 15th from 10:00 A.M. to 2:00 P.M. You can drop off non-perishable items either at Charboneau's on Highway 302 or at Windermere Realty in Key Center. There will be a truck or van to receive the food.

All donated food will go to Community House for local Key Peninsula families who are hungry.

## Taylor Bay Beach Club Wins State Award

Taylor Bay is a community of some 150 properties in the Longbranch area. They recently were notified by the Manager of the Water Quality Program of the Washington State Department of Ecology that for the year 2001, out of some 300 wastewater treatment plants, theirs was one of only 26 in the state that were in 100% compliance with their discharge permits.

Their "Outstanding Wastewater Treatment Plant" award recognized not only the efforts of their operator, Larry Williams of Lakebay, but also the team effort of the staff that provided maintenance, engineering and administrative support. This team effort enabled them to be compliant with effluent limits, monitoring and reporting requirements, spill prevention planning, pre-treatment, and other regulatory activities.

For more information about how they did it or to offer congratulations, call Thomas Carroll, President of the Taylor Bay Beach Club, at 884-5769.

## ROSE FESTIVAL BEING HELD AT RAFT ISLAND ROSES

Hosted by the Tacoma Rose Society

It's LOTS of FUN and it's FREE!

- ◆ Seminars by 4 rose experts from 9:00 am to 1:00 pm each day.
- ◆ 100's of roses from PNW Rose Society Members will be on display.
- ◆ Rosarians will be on site to answer any specific questions.
- ◆ Handouts on how to select and grow roses in the PNW successfully.
- ◆ Drastic price reduction for this weekend only...



- Old Garden roses.....30% Off
- Tree Roses.....30% Off
- Fuchsia's.....25% Off
- Flowering Baskets.....25% Off
- Gift Shop Items.....10% Off
- Yard Art & Trellises.....10% Off



We have 10,000 roses and 700 varieties in stock with over 700 tree roses!  
 We have over 1,000 flowering baskets including 100 fuchsia varieties!  
 We also carry Annuals, Perennials and other small shrubs.

COME CELEBRATE ROSEFEST 2002 ON JUNE 8<sup>th</sup> & 9<sup>th</sup>

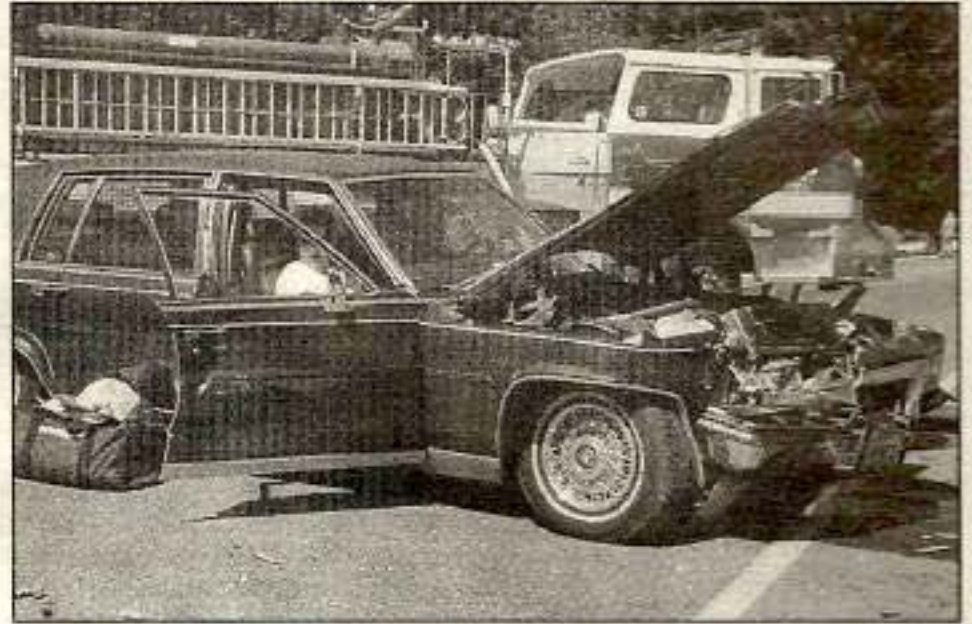
7201 Rosedale Street NW., Gig Harbor, WA 98335 PHONE 253-265-3647



# Too Many Accidents !!! Too Many Deaths !!!



"Rescuers work to help victims of May 10th roll-over on Highway 302"



"Head on collision on May 11th on 302 at Elgin-Clifton Rd."

Photos by Hugh McMillan

**From the Editors:**

From Purdy to Longbranch - or Purdy to Allyn - the roads are narrow and winding with poor visibility and no space on the side but a ditch or drop-off. And they're getting more and more crowded all times of

the day.

Speed limits are rarely observed. Going 45 - the speed limit on KPN and KPS - is considered poking along, with impatient drivers piling up behind. 30 to 35 mph in Home? Forget it.

That double line which means passing is not safe is frequently ignored despite the curves and ups and downs that limit visibility.

Why so many head-on collisions with one car crossing the center line?

And we see the results: friends, relatives - adults, teens, children - passengers and drivers, being injured and losing their lives. **Too many!**

Alcohol and drugs play a part. So does fatigue and inattention.

If you're tired or woozey, pull off the road for a break.

Slow down in tricky places, especially on the Wauna curves.

Wear seat belts, and make your kids and passengers wear them, too.

Don't drink, even one beer, before you hit the road.

Forget the snack, the coffee, the makeup, the cell phone so you can concentrate on driving.

We want everyone to get home safely !!!

## Is a Bull Market Around the Corner?

As America continues on the path toward economic recovery, risky investors are asking if another bull market may be around the corner. We invite you to join us as our panel of experts offer their perspectives on:

- Will the stock market's heyday return?
- Where should I be investing today?
- What if the economic recovery falls flat?

This live broadcast is free, but seating is limited. To reserve your seat or for more information, please call or stop by today. If you are unable to attend at the below time, please contact our office for other options.

**Tuesday, June 11, 2002**  
**Time: 5:30 P.M.**  
**Location: 5775 Soundview Dr. Ste. 203-C, Gig Harbor**

Connie R. Rose  
 5775 Soundview Dr. Ste. 203-C  
 Gig Harbor, WA 98335  
 253-853-7988  
 www.edwardjones.com  
 Member SIPC

**Edward Jones**  
 Serving Individual Investors Since 1874

## MVP Physical Therapy

Orthopedic & Sports Rehabilitation

### Open House Celebration !!

KC Corral, 9013 Key Peninsula Hwy

884-0841

noon to 4 pm Saturday, June 29

Try out our new exercise equipment  
 Get your blood pressure checked  
 Test your grip strength on the Jamar

Kids can learn anatomy at interactive stations  
 Biofeedback analysis of muscle strength  
 Live music provided by MVP staff

Nearby MVP clinics are located in:  
 Port Orchard (360 874-8009) and Gig Harbor (253 853-1464)

## LAKEBAY ROOFING

Pierce, Kitsap, and Mason Counties

- RESIDENTIAL •
- RE-ROOFING •

SHAKE • TORCH DOWN • TILE  
 COMPOSITION • CEDAR  
 SHINGLES

Free Estimates

884-2186

Tom Rolfzen - Owner

WN. ST. CONSTR. REG. LAKEBR\*1570K

## Lakebay Community Church

An Evangelical Covenant Church  
 Pastor Chuck Wabstrom

"Bringing the truth of God's Word  
 and a demonstration of Jesus' love  
 to the Key Peninsula"



Sunday Worship Service  
 10:30 a.m.

Sunday School  
 9:15 a.m.

Pioneer Club

Wednesday 6:30 p.m.

11 Cornwall Rd., Lakebay  
 (1 mile south of Horne Bridge)  
 Phone: 884-3899

**WE ARE INCOME TAX EXPERTS!**

- Individual & Corporate Tax Returns
- Monthly Bookkeeping Services Payroll
- Financial Statements
- Business Consulting
- Notary Public

Evening & Saturday Appointments Available

\* Fax & Copy Service  
 \* Quickbooks Consulting

\* Peachtree Account Care

**Myr-Mar Accounting Service, Inc.**

Members of NSIP, WSTC & KPBA  
 884-3566  
 Marv & Myrtle Keizur, CTP  
 Visit Our New Web Site  
 www.MYR-MAR-ACCOUNTINGSERVICE.COM  
 www.myrmaraccounting.com

**KEY PENINSULA HEALTH CENTER**  
 8903 Key Peninsula Hwy. N Lakebay

SHEAR MAGIC

Caye Williams

"Always a beautician.  
 Sometimes a magician."

884-2003  
 8912 Key Peninsula Hwy N  
 Lakebay, WA  
 98349





**Questions & Answers**  
**Financial Focus**

Submitted by Connie R. Rose

**Don't Pick Investment Based on Latest "News"**

Financial markets can be rocked by all sorts of occurrences - reports of earnings shortfalls, corporate malfeasance, increases in inflation, political instability and other causes. And the market doesn't just react - it tends to overreact. Why? Because many investors make hasty investment decisions, based on emotion.

Try to avoid this type of investing. If you're considering a stock, examine the company's fundamentals. Is its management sound? Are its products competitive? Also, see if the stock fits well into your diversified portfolio.

Of course, you can't ignore all the news. A pattern of stories might indicate a particular company or industry is heading into a long-term spiral. But before you make any investment decisions, make sure you're not responding to what may be a short-term event. Remember, today's headlines fade quickly, but your investment strategy should last for years.

**Key Singers Presents**  
**Music In June**

On June 8th, The Key Singers will perform at the Longbranch Improvement Club in their annual spring fundraiser. They will entertain with folk songs, show tunes and other pieces. Time is 7:00 P.M.

Tickets for the event are available from any Key Singer member and will be available at the door. The cost is \$8.00 for adults, \$5.00 for seniors and students, and children under 12 are admitted free. Refreshments will be served and there will be a raffle.

The Key Singers are always looking for people who love to sing. Practice is at the Longbranch Church every Tuesday from 7:00 to 9:00 P.M.

For further information about the group and the concert, please contact Director Jo Sturm at 884-1350 or Co-director, Marianne McColley at 884-5615.

**Host Family**  
**Volunteers Needed**

World Heritage, a non-profit public benefit organization, is seeking families, couples or single parents, with or without children at home, who are adventurous, fun-loving, responsible, and most of all, caring, who are interested in hosting a high-school -aged foreign exchange student. Anyone interested should contact Marie Davis at 565-5289 in Tacoma, or check their Website: [www.world-heritage.org](http://www.world-heritage.org).



**Quote of the Month**

"We must dare to think 'unthinkable' thoughts. We must learn to explore all the options and possibilities that confront us in a complex and rapidly changing world. We must learn to welcome and not fear the voices of dissent. We must dare to think about 'unthinkable things' because when things become unthinkable, thinking stops and action becomes mindless."

*Senator J. William Fulbright, Senator from Arkansas, 1945 - 1974; Chairman of the Senate Foreign Relations Committee, 1959 - 1974; sponsor of the Fulbright Act which enacted a major U.S. program of international educational exchanges.*

**Continuing the Dream by**  
**Breaking the Chains**

The African American Museum invites the community to it's sixth annual Juneteenth celebration, "The celebration of the Emancipation of Slaves". This celebration began in 1865 in Galveston, Texas. The celebration will be on June 22nd, from 10:00 A.M. to 5:00 P.M. All outside activities are free.

All age groups will be able to participate. For the children there will be workshops, face painting, clowns and much more. For the adults there will be drummers, dancers, musicians, speakers, a Tuskegee Airmen presentation, a Buffalo Soldiers presentation and more. These activities will celebrate the dream and the spirit of breaking the chains.

The Museum is located in downtown Tacoma at 925 Court C Street. It is open Tuesday through Saturday from 10:00 A.M. to 5:00 P.M. General Admission is \$3.25 for visitors over age four and \$2.75 for seniors. Groups of ten or more are \$2.75 per person.

For additional information, please contact the Museum at (253) 274-1278.

**Musical/Dance Show at**  
**Vaughn School**

Turn On The Radio, a musical/dance extravaganza will be presented by 3rd and 5th graders at Vaughn Elementary School at 7:00 PM on Thursday, June 6th. There will also be an assembly at the school at 9:15 AM for the other students to see the program.



Kevin Entze presents Peninsula High School student Erica Trotter with the Student of the Year Award at the Gig Harbor Elks Lodge Annual Youth Awards Banquet.

Photo by Hugh McMillan

**Contributions**

Since our last issue, the Key Peninsula News has received additional contributions from:

- Dan Haley
- Marjorie Dietz
- Shirl Olson
- Rev. John Riersma
- Bettie Fifer

Thank you all! Even a little support each month helps keep the financial fires at bay. We hope everyone is continuing to enjoy the paper.

Please see page 11 for our questionnaire and send us your opinions.

**CLASSIFIED ADS**

**Home Feed & Grocery**

Mon.-Fri. 8:00 AM-10:00 PM  
 Sat. 9:00 AM-10:00 PM  
 Sun. 9:00 AM-9:00 PM  
 Holidays 10:00 AM-6:00 PM  
 Corner 4th & KPN, Lakebay  
 884-2321

**Classified Ad Rates:**  
 \$5.50 for 10 words  
 \$.30 for each additional word

**KEY PENINSULA BAPTIST CHURCH.** Meeting Sunday mornings at Key Peninsula Civic Center in Vaughn. Bible Study 9:30 AM, Worship Service 11:00 AM, Wednesday AWANAS 6:45 PM. **Pastor James Rouse - Phone 884-9994.**

**HELP WANTED**

**HANDYMAN - Part Time**  
 Painting, Cleaning, Help with Carpenter Work, Yard Work, etc. \$8.00 an hour. 884-3600

**COUNSELING OFFICE OF**  
 Lori Ann Brudvik Lindner, M.A.  
 Individuals/Couples  
 Eating Disorders  
 Key Pen Health Cntr & Tacoma  
 Sliding Scale  
 756-5060

**APPLEBY PLUMBING & DRAIN**  
 Service, Repairs, and Remodels, Hot Water Tanks.  
 (253) 884-9827.

**WATKINS PRODUCTS** are available, call Marvin and Myrtle Keizur at 884-3566. VISA/MC.

**HANDYMAN FOR HIRE**

No job too Big nor too Small  
 Carpentry, Paint, Labor, Yard Work,  
 Pressure Wash, Honey Do's, etc.  
 Call Steve 884-1826

**Let's talk AVON**

Buy or Sell  
 884-2057  
[twomorebeans@juno.com](mailto:twomorebeans@juno.com)

**The Deadline for all Classified Ads is the 20th of Each Month.**  
 Call Bob Stackhouse at 884-4699 to place your Classified Ad.

**S.A.V.E. Thrift Store**

**GREAT NEW MERCHANDISE**  
 All clothes and shoes  
 Proceeds go toward academic and vocational scholarships for PHS students  
**DONATIONS ACCEPTED**  
**OPEN: M-Tu-Th-F**  
 10:00 AM - 4:00 PM  
**Sat. 10:00 AM - 4:00 PM**  
**CLOSED: Sun. & Wed.**  
 (Below Peninsula High School)  
 (253) 857-2800





by Dory Meyers

Author Lydia Minatoya will be present at the Friends of the Key Center Library's **Book Discussion meeting**, Thursday, June 20th at 7:00 P.M. to discuss her books, *Talking to High Monks in the Snow* and *The Strangeness of Beauty*. Gentle, lyrical, interrelated books, one an autobiography and the other, a novel about coming to terms with her ancestry, a strict Japanese samurai code, and growing up in the United States. Lydia Minatoya lives in Seattle where she is a counselor and faculty member at North Seattle Community College.

**Summer Reading 2002** at the Pierce County Library will include many activities and programs **for children**. The theme this year will be *Paws, Claws, & Tales*. Beginning June 22nd, stickers of some of your favorite pets, cats, dogs, horses, fish, birds, guinea pigs, and snakes, will be available to place in an attractive activity booklet for each book read. There will also be t-shirt prizes, free trips for skating at the Sprinker Recreation Center and coupons for Subway Sandwiches and Salads.

**Special programs** are scheduled for:

**Wednesday, July 10th** at 11:00 A.M. - **Pet Tales**, or *The Long and Short Of It*: laugh-aloud stories of critters with tales and without, told by master story-teller, Elizabeth Lord. Ages 6 and up.

**Thursday, July 18th** at 11:00 A.M. - Cartoonist **Frank Frazee** will show how to draw your very own pencil pets. Ages 6 and up.

**Thursday, July 25th** at 11:00 A.M. - **The Puppet Theater** presents *Henry Penny* and *The Town Mouse and The Country Mouse*. A forty-minute presentation.

Calling all children to join us at the library for a summer of good reading and fun!

**PENINSULA SCHOOL DISTRICT ACTIVITIES**

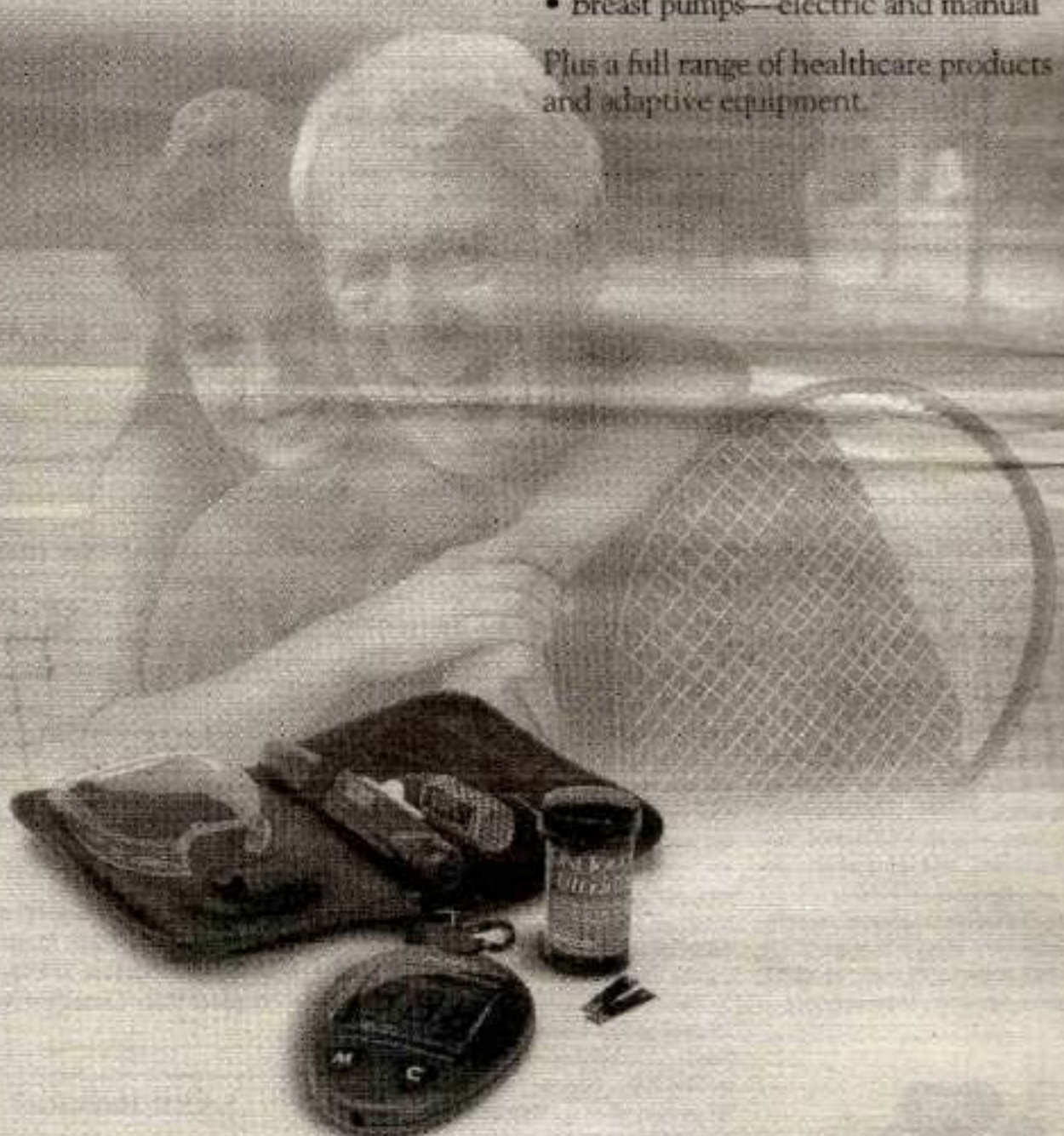
- June 1 - Evergreen PTA yard sale
- Student Art Gallery, Heidi Clark and Shelli Mitchell; Harbor Gallery, through June 31st
- June 4 - PHS Jazz Band Follies, 7:30 P.M.
- June 7 - Goodman Broadway Revue, 7:30 P.M.
- June 10 - PHS Senior Solos Concert rehearsal, auditorium, 6:30 P.M.
- June 11 - PHS Senior Razz & Solos Concert, auditorium, 7:00 P.M.
- June 16 - Graduation Ceremonies, Tacoma Dome, GHHS at 2 P.M. and PHS at 6:00 P.M.
- June 18 - Evergreen Elementary 5th grade Graduation Ceremony, 11:30 A.M.
- June 19 - Field Day at Vaughn Elementary
- June 20 - Last day of school; half day.

# We'll Take Care of You!

For blood sugar monitoring and bronchitis, we have what you need.

- Diabetes and respiratory care supplies
- Prescriptions and over-the-counter medications
- Wheelchairs, crutches and walkers
- Breast pumps—electric and manual

Plus a full range of healthcare products and adaptive equipment.



Most insurance plans and major credit/debit cards accepted.

4700 Ft. Fossdick Dr. NW  
 Gig Harbor, WA 98335  
 (800)537-1393  
 (253)858-9941

A Medicare & Tricare Partner