

BOX HOLDER



Key Peninsula

NEWSLETTER

Non-profit Org.
U.S. POSTAGE
PAID
PERMIT NO. 2
VAUGHN, WA. 98394

CIRCULATION 3750

NEIGHBORHOOD NEWS FROM WAUNA TO LONGBRANCH AUGUST, 1979 VOLUME V, ISSUE NO. 8

PIONEER DAY

SCHEDULE OF EVENTS FOR PIONEER DAY

SIDEWINDER SUB SHOP

This is the name of the newest Key Center food shop. Ray and Gail Cummings, who moved to Lake Holiday last April, have opened a sandwich shop in the K C Corral at Key Center.

Their specialty is the "super sub" sandwich. They start with a foot and a half long french bun, add four kinds of meats, 3 cheeses, plus trimmings. It is definitely a meal in itself.

Other choices include sandwiches (not quite so large!) with pastrami, cheese, cold cuts, roast beef, lettuce, onions and pickles. Speaking of pickles, one novelty found on their shelf is a gallon jug of pickled eggs. Delicious!

The shop is open everyday from 7:00 a.m. to 9:00 p.m. and serves coffee and donuts.

The Cummings are originally New Englanders but really enjoy their adopted state here, as do their children. They are Kim 16, Tammy 14, Shawn 10, Heidi 8, and Anthony 6. Their granddaughter, Kristina 3, is staying with them, too.

Ray's profession is the remodeling business, so this is really Gail's project, but he is on hand to help.

They invite people to come and see for themselves their special menus.

- 12:00 Concession Stand Opens
- 12:30 Horseshoe tournaments
- 1:00 Children's Activities
- 1:30 Square Dance Demonstration
- 2:00 Logging Demonstration Begins
- 2:30 Judging of Baking Contests Exhibits Open
- 3:00 Fiddlers Group Country Cousin Dinner
- 3:30 Hog Calling Contest Arm Wrestling Contests Children's Activities
- 4:00 Baked Goods Auction
- 4:30 Square Dance Demonstration
- 5:00 Exhibits Close - Childrens Awards
- 5:30 Fiddlers Group
- 6:00 Adult Frisbee Throw Country Cousin Dinner Closes Volleyball
- 6:30 Adult Awards

GET DINNER TICKETS AHEAD

This year it will be necessary to get tickets in advance for the Country Cousin Dinner on August 12th. All Civic Center Board members have them for sale and they can be bought at the Home Store, Walt's Store at Key Center, Marcia's, Buttons and Bows, Key Western Hardware and Nancy's NicNacs next to the Vaughn Post Office. Available until August 6. From the 6th till the 10th, call 884-3456 for reservations.

KEY CENTER PHARMACY

Jim McMahon, of Belfair, is busy preparing his K C Corral store for its grand opening in August. Helping him are his wife, Kathy, Patrick 16, Kristen 13, and Erin 10.


His pharmacy will carry, besides drugs, health and beauty aids, photo supplies, magazines, cards, gifts and variety items.

Jim had a pharmacy in Longview, Washington, for 24 years. When visiting a friend in Vaughn, they found the available site and decided to move to their property in Belfair, which they have owned for several years.

A growing population will be well served by this newest addition to our business community.

LABOR DAY DANCE

Don't forget to get your dance tickets to the Longbranch Labor Day Dance, Saturday Sept. 1, from 9:30 to 2:00. Last year all the tickets were sold prior to the night of the dance. So don't miss out, this year get your tickets ahead. The sooner the better! Its only \$2.50 a person, \$5.00 a couple. The tickets will be available at the Longbranch Store, the Dock and at Key Center Realty, Inc. in Key Center. For more dance and ticket information, call Pat Robinson at 884-2372.



KEY PENINSULA CIVIC CENTER
NEWSLETTER

P. O. Box 12, Vaughn, WA. 98394
PUBLISHER
Key Peninsula Civic Center
884-2951

EDITOR
Pat Greetham

ADVERTISING
Henry Stock

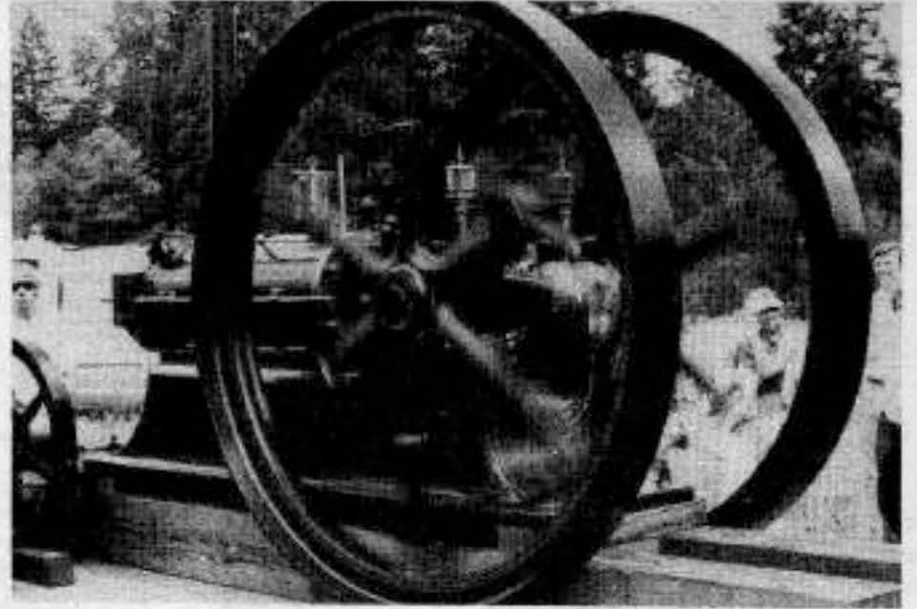
ADVERTISING LAYOUT
Marlyce Viers
Thelma Klein

COPY LAYOUT
Mary Cole

TYPING
Pat Hunter
Avis Cole
Vicki Kechijian

SKETCHES
Don Snowden

Pioneer



HERE ARE SOME SCENES YOU WILL SEE DURING PIONEER DAY AT THE CIVIC CENTER ON AUGUST 12TH. OLD TIME LOGGING EQUIPMENT AND MACHINERY ROUNDED UP BY HENRY STOCK WILL BE ON DISPLAY AND SOME OF IT WILL BE IN WORKING ORDER FOR DEMONSTRATIONS.



SHAKE-SPLITTING IS BECOMING A REVIVED HAND CRAFT BUT IT IS ALSO A REMINDER OF THE ORDINARY JOBS OF YESTERYEAR. THERE WILL BE SEVERAL COLLECTIONS AND CRAFTS ON DISPLAY-- HISTORICAL SOCIETY PHOTOS AND SCRAPBOOKS, OLD DOLLS, BEADED BAGS, SAD IRONS AND THIMBLES, OLD AIRPLANES, WOOD CARVING, MATERIALS AND OLD PERIOD COSTUMES, WEAVING, PENS & PENCILS, ETC. BY THE WAY, IF ANY READER HAS A COLLECTION THEY WOULD LIKE TO BRING, PLEASE CALL EDITH JOHNSON AT 884-2362.



PIONEER DAYS



CHILDREN'S ACTIVITIES INCLUDE SACK RACES, A WATERMELON EATING CONTEST, FOOTRACES AND A VARIETY OF EVENTS BY AGE CATEGORIES, PLUS A BAKING CONTEST AND SNACK BOOTHS OUTSIDE FOR THEM.

THERE WILL BE SOMETHING FOR EVERYONE ON THIS DAY, EVEN THE AVID HORSESHOE PLAYERS. ADULT COMPETITION WILL ALSO INCLUDE ARM WRESTLING, HOG CALLING, BAKING CONTESTS, AND VOLLEYBALL.



A HIGHLIGHT OF THE DAY WILL BE THE PERFORMANCES OF THE DAY BY THE OLD TIME FIDDLERS ASSOCIATION. BUT DON'T MISS THE SQUARE DANCERS OR THE SKY JUMPERS, EITHER. THE SCHEDULES OF EVENTS WILL BE AVAILABLE AT THE DOOR WHEN YOU ARRIVE.

GAYNELLE McCURDY, MISS TEENAGE CANDIDATE, FROM LAKEBAY, HELPS ADVERTISE PIONEER DAYS AND THE COUNTRY COUSIN DINNER WITH HENRY STOCK'S MINI COVERED WAGON. SHE ADDS THE MODERN TOUCH TO THE OLD FASHIONED COMMUNITY CELEBRATION THAT WE ARE ALL LOOKING FORWARD TO.



CHECK FREEZER FOR OLD PRODUCE

Before you fill your freezer with this year's crop of fruits and vegetables, check to see what is leftover from last year, says Olga V. Fuste, Washington State University's Pierce County Extension agent.

Foods that have been frozen for a year are still safe to eat, but they aren't as good. The taste and texture begins to change and some nutrients are lost, even though the freezer has been at zero degrees or lower.

"Try to use up all those fruits and vegetables before you harvest and freeze more," Mrs. Fuste says. If a few packages remain by then, be sure you put the oldest packages at the top or in the front of your freezer so they are used first.

Checking your freezer now can also help you plan what you are going to freeze this year. If you still have two dozen packages of frozen green beans left, you know your family doesn't particularly like frozen green beans. Don't repeat your mistakes this year.

If you forgot to label packages last year, trying to figure out exactly what's left now will remind you to label carefully this year. Remember to put the date on the label, too, or you won't know whether a package is one or five years old.

To be really organized, make a list of the foods in your freezer. When you take out a package, cross it off this list. When you add this year's harvest, list the name of the food, the date frozen, and any special description, such as "No Salt."

If you want to make the best possible use of your freezer, keep track of all it contains.

For more information on freezing produce, contact the Cooperative Extension Office and ask for Bulletin #658.

This bulletin is free and available to all county residents without discrimination.

-Olga V. Fuste
County Extension
Agent

Our Pres Sez...

By Bob Schottland

With preparations for our 3rd Annual "Pioneer Day" celebration going ahead at fever pitch for Sunday, August 12, I thought it would be a little departure from the serious problems of the day to stop for a moment and share with you a little known humorous editorial from Falcon Facts from Cerritos College in Norwalk, CA.

"The current teacher shortage is nothing but a fabrication foisted on us by the major teaching cartels to raise the cost of teachers to incredible heights while we continue to demand more learning.

It probably started around 1967 when major production facilities realized that there was a glut on the market and teachers were being used far too casually--especially in California where so much teaching is wasted.

Anyway, teacher production facility managers cut way back to create an artificial shortage. This caused a lot of foreign teachers to enter the country to help fill the artificially created holes, and we became dependent on this inexpensive source of teaching professionals.

Well, now the Franco-Anglo Revolution has closed the Sorbonne and Oxford and those highly refined instructors are being held in reserve in their own countries.

Our options are clear: Create more teachers or reduce the amount of teaching that is going on. But nooooooo. The American teaching production cartels know they have us in a hammerlock and can secretly refuse to produce more teachers until their salaries reach at least \$1.50 per unit for premium teachers and \$1.25 for regular. There are no low-lead teachers.

Are Americans going to stand in line to go to school? They might for a short time; but when fistfights start about whose child will get enrolled in kindergarten, the government will have to do something.

One thing we could try would be rationing learning on an odd-even basis. It would work this way: 1) If the student is odd, he or she attends on odd-numbered days of the month. Even students would attend on even days, except out-of-state students who may attend on any day. 2) No teaching will be available on weekends. 3) Catalytic students may not learn from premium teachers. 4) Personalized students attend on even days-- unless they are a little odd in which case they attend on odd days. 5) Should a line form at the classroom door, you may not butt into line. 6) No learning will be packaged "to go" in containers other than for the original students, and each student will be limited to only 20 units of learning per school week.

Finally, if you are planning a long trip for your student, call ahead to find out whether your destination is on an odd-even basis or some other rationing system. The last thing you want to happen is for your student to run out of education in the middle of nowhere on the wrong day.

This plan will work if we can find enough gasoline for the buses to get your student to school in the first place."

PENINSULA CAR POOL STARTS AT TWO LOCATIONS, TAKE NOTE---

Residents of the peninsula are now ready to help do their share in trying to cut the use of gasoline by opening two (2) Car Pool Parking lots.

Executive officers of the Key Peninsula Civic Center have agreed to set aside a portion of the North corner of the Civic Center parking lot and Walt Schmidt, owner of Walt's Fine Foods Grocery, has agreed to make the back part of the lot next to his store and the KC Corral be used for Car Pool parking.

All people who drive to Tacoma, Seattle, Bremerton and elsewhere are urged to sign-up on the Car Pool Bulletin Boards located next to the library at the Civic Center and at Walt's store on the North side.

The Newsletter does not intend to match riders and drivers, but it is the sincere hope of the Civic Center Board and its officers that citizens on the peninsula can match themselves and that through this individual effort conservation of fuel will be noticed.

Farlow Painting

RESIDENTIAL - COMMERCIAL
PAINTING - PAPERING - TAPING - TEXTURING

CARL V. FARLOW
864-3546

RT. 2 BOX 427A
GIG HARBOR, WA 98335

KEY PENINSULA LIBRARY HOURS

Mon. & Thurs. 1-5 pm, 6-9 pm.

Tues. 1-5 pm.

Saturday, 10-12noon, 1-4 pm.

Little by LITTLE

by Ruth Little

This has been a good year for gardens - too good for some things. As I look out my window, the shrubs and trees have grown so much that they hide a great part of my view, and I've been cutting and trimming for weeks.

The early spring flowers and shrubs seemed more beautiful than usual this year.

Now the vegetable gardens have the center of the stage and a good vegetable garden is truly a thing of beauty. Of course first place would have to go to Dave Dadisman. (No one would dispute that, I'm sure.) But there are many others on the honorable mention list. I suspect Carol Powis produces more good vegetables per square foot than any other garden plot; it's a small garden, but she raises artichokes, kohlrabi, leeks, you name it, she raises it.

Ken and Ole McDowell have a huge magnificent garden; I've never seen more beautiful calendulas - hundreds of them, massed to make a fantastic display of bright orange. They also have a thriving and productive vegetable garden.

As I drive down the Lackey Road I always admire the Halstrom's garden. Then on down the road at the foot of the hill is another well-cared for garden with long, neat rows of all varieties of vegetables and a row of sunflowers along one edge.

Kelly Babcock always has a large vegetable garden which she keeps neat and attractive.

I might add that Kelly is lucky enough to have some delicious mushrooms that come up every summer.

So much for gardens - don't be mad if I missed yours. I can't see all of them; These are just some I've seen lately.

Have you ever used Kleen-raw sugar? It comes in a two pound plastic bag. Many persons buy it thinking it is raw sugar and more healthful. In fact I suspect everyone who buys it assumes it is raw sugar. It costs more than regular brown sugar and it should, since they have taken brown sugar and re-processed it to make it "look like raw sugar." So that those who buy it for raw sugar and pay the extra price to get a sugar that hasn't been processed are really getting a product that has been doubly processed. This is fully explained in fine print down in the left corner of the plastic bag.

The person who figured out that devious tricky scheme is my idea of dishonest - just an ordinary crook. I wonder how much money the company makes on their imitation raw sugar. Of course no one has to be fooled by such claptrap but should we have to spend our lives being suspicious of everything - having to read all the fine print on everything we buy?

Take a good look at the covered wagon Henry and Eleanor Stock and Sally Cornman made; it demonstrates the true pioneer spirit of make-do with materials you have. Notice the clever arrangement at the rear to hold down the closing. Pioneer ingenuity I call it! See you at the Pioneers Day celebration.

Vaughn Garden Club

The September meeting of the Garden Club will be the demonstration at the Civic Center by Olga V. Fuste, Home Economist Foods and Nutrition and County Extension Agent. Mrs. Fuste will talk on drying fruits and vegetables and on building your own dehydrator.

Each member is asked to bring two dozen cookies or pieces of sweet bread and butter for the refreshments. The meeting will be held in the Gold Room, followed by refreshments.

The June meeting, the annual picnic, held at the Lake Holiday Clubhouse, was greatly enjoyed by those who were able to attend.

Outgoing president Barbara Richards introduced the new president Beulah Kupka, who has planned the programs and meeting schedule for the coming year.

"We'd like to see all our members and other residents of the area at this program," said Beulah, "so bring your sandwich and join us at the Civic Center Thursday, September 20, at 10 a.m."

FREE PROGRAM

All residents of the area are invited to attend the program on drying fruits and vegetables at the Civic Center on Thursday, September 20, from 10 a.m. to noon.

Sponsored by the Vaughn Garden Club, Olga V. Fuste, Home Economist Foods and Nutrition and County Extension Agent will give instructions on drying foods and also on building your own home dehydrator.

Mrs. Fuste will distribute pamphlets containing detailed information on her subject.

The Civic Center is providing the Gold Room for the program and hopes to have at least 50 or more people attend. It is suggested that everyone bring a sack lunch and the Garden Club will serve coffee, tea and cookies following the program.

SUBMARINES ATTACK KEY CENTER!

The Sidewinder Sub Shop
K.C. Corral Shopping Center

Combo Submarine Sandwiches: - Hot Meat Ball
Hot Sausage - Coffee and Doughnuts

All To Go 7am - 9pm 7 Days a Week

Grand Opening Special

Free 12 Oz Cold Drink with each Sub Sandwich
Purchased thru Aug. 15 with this Coupon Only
No Exceptions.
Coupon Expires Aug. 15, 1979 coupon value 1/20 of a ¢

The Henderson Bay Company Ltd.
Dealers in Real Estate, etc.



Charon Alvar
206-858-6183 Bus.
206-884-2529 Home
Vaughn, Wa.

2008 14th Ave. N.W., Gig Harbor, WA 98335



NEW KEY PENINSULA LIBRARIAN

IN HER POSITION OF COMMUNITY LIBRARIAN AT THE KEY PENINSULA BRANCH, PATTY NETTLES HAS A UNIQUE OPPORTUNITY TO USE HER PREVIOUS LIBRARY EXPERIENCES TO SERVE THE RESIDENTS OF THE AREA. PATTY IS NOT NEW TO PIERCE COUNTY LIBRARY. SHE ASSISTED THE HEAD OF BOOKS BY MAIL TO SET UP PROCEDURES IN THAT SERVICE AND HELPED SUPERVISE THE ROUTINE WORK. IN ADDITION, PATTY WAS EMPLOYED AT THE SERVICE CENTER IN BILLING AND OVERDUES. EXPOSURE TO LIBRARY PROCEDURES AT THE TACOMA PUBLIC SCHOOLS' CURRICULUM LIBRARY, THE HUNT BOTANICAL LIBRARY IN PITTSBURGH, PA., THE ALEXANDRIA LIBRARY IN ALEXANDRIA, VA., AND THE ORLANDO PUBLIC LIBRARY IN ORLANDO, FLA. PROVIDES PATTY WITH A BACKGROUND OF EFFICIENCY AND A STOREHOUSE OF IDEAS FOR SERVING PEOPLE'S NEEDS. FOR EXAMPLE, MEMBERS OF THE COMMUNITY HAVE EXPRESSED A DESIRE FOR STORY-TIME HOURS AND PATTY HAS REQUESTED TRAINING IN THIS AREA. IF ENOUGH INTEREST IS GENERATED, THEN PATTY WILL DO HER UTMOST TO COMPLY. IF ANY INDIVIDUAL OR GROUP HAS A NEED FOR A SPECIAL PROGRAM OR SPECIAL INFORMATION, PLEASE COMMUNICATE THESE REQUESTS TO HER.

BECAUSE PATTY HAS LIVED IN THE PUGET SOUND AREA SINCE 1967, MANY OF HER INTERESTS ARE SIMILAR TO KEY PENINSULA RESIDENTS. FOR THREE YEARS TERRY, HER ENGINEER HUSBAND, AND BRONWEN AND ERIN, HER TWO DAUGHTERS, HAVE BEEN BUILDING A HOUSE AND DEVELOPING A 10 ACRE FARM IN NORTH ROSEDALE. PATTY IS PARTICULARLY INTERESTED IN TALKING TO PEOPLE WHO ARE DOING THE SAME THING. MOST OF ALL SHE IS DETERMINED TO LEARN ABOUT THE KEY PENINSULA COMMUNITY AND LIFE. VISIT THE LIBRARY AT THE KEY PENINSULA CIVIC CENTER TO MEET PATTY IF YOU HAVE NOT DONE SO.

HARBOR FAMILY HEALTH ASSOCIATES

4606 Neel Court 858-6181
(Next to the Harbor Water Co.,
off Rosedale Street)

INTRODUCING

ERIC WALTER LURIA, M.D.
FAMILY PRACTICE

CATHERINE C. LURIA, C.R.N.
FAMILY NURSE-PRACTITIONER

WATCH FOR.....

...the book sale and silent auction at Pioneer Day, August 12. These will be sponsored by the Friends of the Library to raise money for future needs in the new library to be built.

If anyone has books to donate for the sale, they may be left at the Key Peninsula Library or Walt's Store in Key Center.

Up for bid will be a BBQ, a bolt of cloth, a push lawn mower plus several other unusual items. If you have any such items you would care to donate, please call Ruth Little at 884-2567.

FIREWORKS

The fireworks sale was a resounding success again this year. We made almost enough to pay for our new P.A. system.

The success was due to all the volunteers and drafted help.

Penny Zimmerman
Elsie Olson
Edyth Johnson
Mary Seidelman
Sally & Wally Cornman
Roy & Nita Glass
John Rypdahl
Henry & Eleanor Stock
Marian Wagner
Tom & Ursula Van Slyke
Larry Alvar
Norm Calder
Don Davis
Frances Durward
Shirley Olson
Marie Swenka
Bob & Ricole Schottland

And my 4th of July crew, Sally, Tom & Nick.

Special thanks to Walts, and Marcia's. To all who helped, a grateful and hearty Thank You.

-Ray Durward,
Chairman

ASHES MEETING

Members of the Ashes will meet on August 2 and the main fire station at Key Center with a pot luck dinner.

After the meeting members will make shortcake for the "Pioneer Day" dinner. This is a joint project with members of the Upper Sound Grange. All members are urged to attend.

CHARLIE'S SAW & MOWER

1 mile North of Key Center on Highway 302

WOODCUTTER'S
SPECIAL

Get your
firewood
NOW!



ECHO CHAIN SAWS
& 174.95 & UP WITH EXTRA CHAIN
884-2960 Shop Home 857-6286

Keynotes

Evelyn Nederlee entertained friends recently at an afternoon coffee in honor of relatives who are visiting her from Sweden.

Margit Timm, of Kalmar, Sweden, Evelyn's cousin, has visited here before. Her last visit was in 1967. This trip she is traveling with her 18 year old granddaughter, Katrina Johnson of Goteborg, Sweden. Katrina is enjoying her first visit to the United States.

They have seen greatly varied sections of the country, having been to New York, Washington D.C., Florida and Louisiana before coming to the Pacific Northwest.

Mr. and Mrs. Bill McLean of Bemidji, Minnesota were recent houseguests of the Bud Moore family of Vaughn. The couple's friendship goes back to the early 1950's when they were next door neighbors in Illinois and Bud and Bill worked together.

This being Jane McLean's first trip west of the Mississippi, Bud and Marylou had a great time showing off the scenic wonders of the Peninsula area. Included in the travels was a beautiful trip on the North Cascades Highway and a stay in the town of Winthrop, which greatly impressed the visitors.

Dora and Art Heinrich on Lackey Road, have found that helpful neighbors are not only a tradition of the past. They are extremely grateful to the neighbors and friends who helped load and truck 300 bales of hay for them recently.

None would accept any payment for helping this older couple and they would like to take this opportunity to thank these "dear hearts and gentle people" in our Peninsula area for saving the day for them. The hay was gathered just before the storm came.

Mark Tovey, son of Joyce and Mike Tovey, Lakebay, was the outstanding player at the Seahawk football camp for youth in Cheney, Washington. He received an autographed copy of a photo with him between Jim Zorn and Steve Largeant, pro players.

Coline Coburn, Longbranch just returned from a trip to her Minnesota home town for her high school class reunion.

Key Peninsula Clinic

The long days of sunshine and warmth have brought a freshness to the KPHC in the form of lightening and brightening on the inside. Come on in for a view of our "face lift" and meet the staff!

For the next three months, Dr. Chris Miller will be offering his services as a physician through the Family Practice Residency Program of Tacoma. Dr. Miller graduated from the University of Iowa School of Medicine in 1971 and practiced in England as a part of the military. He hopes to make the Northwest his home after completing his residency next June. If you wish to make an appointment with Dr. Miller, please call the Clinic. His hours are 2 - 5 p.m. Wednesdays.

A change in Clinic hours was mentioned in last month's column but as a reminder, we are open during the following times:

Mondays: noon - 8 p.m.
 Tues. - Fri.: 10 a.m. - 4 p.m.
 Saturdays: Closed

For your convenience and prompt attention, please call for an appointment at 884-2757.

Although it seems as though summer has just begun, September is coming - time for school to reopen. KPHC provides necessary school and sports physicals for returning students. August is a good time to plan for school and avoid the last-minute rush to meet requirements. Call now for an appointment.

Speaking of school, KPHC also provides the immunizations needed to meet State regulations for returning students. For the protection of good health, plan now for those needed immunizations.

In the basement of the Clinic sits a collection of cooking dishes that were unclaimed after "A Spring Celebration". If you are wondering what happened to that dish or pie tin, we will gladly help you sort through our mounting collection downstairs. And, again, we thank you for helping to make that night unique and memorable.

Another note of appreciation is due to Dr. Eric Luria of Harbor Family Health who provided physician services at the KPHC during April, May and June. As a result of his interest in the KPHC and in Peninsula health care, the Clinic is able to offer testing for glaucoma, our nations leading cause of blindness. Dr. Luria instructed the clinical staff in the use of a tonometer, the instrument used to test for the presence of glaucoma which, if detected in time, can be prevented. We thank you, Dr. Luria.

Along the lines of health maintenance, the KPHC offers free blood pressure checks and maintains records of the readings which may be made available to your physician.

Through funds from the Kellogg Foundation (corn flakes) to the Hospital Research and Educational Trust of Chicago, an affiliate of the American Hospital Association, the KPHC has been selected to receive staff technical assistance and Board training. Those providing the training are members of a consultant group from the Midwest, all of whom are involved in the operation of clinics such as ours. Their purpose in providing the training is to assist us in serving our community better. The first of these training sessions occurred July 26-28 and involved all staff and Board members. We hope you see the results!

A final note, reminder and expression of appreciation: Jeanne Brodsack is resigning from KPHC on August 15th. That evening - the 15th - at the Longbranch Community Church there will be a potluck supper at 6:00 p.m. to honor her years of devotion to all Peninsula residents. She has touched many lives in our area; those of you wishing to participate in honoring Jeanne are welcome to attend the supper on the 15th.

NUTRITION

The free meetings on Nutrition, including the meals prepared by participants and planned by the Clover Park Education Center, are becoming more popular.

The meetings are held at the Longbranch Community Church Fellowship Hall, 12:30 p.m. and open to all adults. On August 14th, a lesson will be given using dehydrated fruits and vegetables, as well as basic casserole recipes and menus using fresh garden vegetables. August 28th, Tangy Tomato juice, Country Breakfast Granola, Cream Scones and Rhubarb Jam will be prepared and served, and recipes distributed. On

If you are interested in attending either of the meetings, call Margurite Bussard, 884-3771 or Jean Humphreys, 884-3716, to insure adequate food.

-Jean Humphreys

SUMMER YOUTH EMPLOYMENT PROGRAM

Pierce County Manpower Planning is once again sponsoring the CETA funded Summer Youth Employment Program. This is a nine-week long work program providing vital summer jobs to youth from low income families. In order to operate a successful program, we strive to provide all youths with the opportunity to apply for the jobs.

If you have any questions, or would like to have additional information, please call 593-4940.

D. Michael Desrosier

IS PLEASED TO ANNOUNCE

THE OPENING OF THE

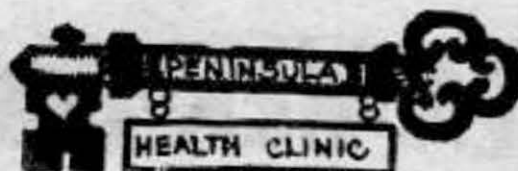
MINTER VETERINARY CLINIC

11625 STATE ROAD # 302 S.W.

PLEASE CALL FOR AN APPOINTMENT

857-6158

HOURS - 9-1 AND 2-5
 MONDAYS THRU FRIDAYS



MINTERBROOK

OYSTER CO.



Open 7 Days

9 a.m. to 4 p.m.

Retail-Wholesale

Try Our
"COUNTRY COUSIN DINNER"
 at Pioneer Day
 Featuring

COUNTRY STYLE BAR-B-QUED CHICKEN

CORN ON THE COB

OLD FASHIONED POTATO SALAD

RELISH FIXIN'S

SOUR DOUGH ROLLS

STRAWBERRY SHORTCAKE

COFFEE

ICE TEA

MILK

DINNER WILL BE SERVED FROM 3 TO 6 P.M.

ADULTS: \$4.50 - UNDER 10: \$2.25

No Tickets Sold at the Door

BUY YOUR TICKET(S) TODAY! SEE ANY CIVIC
 CENTER BOARD MEMBER OR AT WALT'S GROCERY

KPCC "PIONEER DAY SET FOR AUGUST 12

Members of the Civic Center Board of Trustees are busy selling tickets and making plans for the 3rd Annual "Pioneer Day" celebration which will be held on Sunday, August 12 from 12 noon to 6:30 p.m. at the Civic Center in Vaughn.

Selections of key chairpersons have been made and include: Henry Stock, Logging demonstration, Larry Nadeau, Horse shoe Tournament, Penny Zimmerman, Children's Activities and Adult Frisbee Throw Contest, Jane Van Slyke, Square Dance Demonstration, Betty Lindeman, Baking Contest for Juniors and Seniors, Suzy Schaddelee and Eleanor Stock, "Country Cousin Dinner," Edith Johnson, Exhibits, Larry Alvar, Arm Wrestling, Bud Conan, Auctioneer for the Baked Goods and Sally Cornman and Loretta LaRue, Civic Center Concession Stands.

Special attractions will feature the appearance of the Fort Lewis Command Parachute Team which will perform at two different times during the afternoon and The Old Time Fiddlers Association which includes fiddlers, guitarists, banjo players and a bass fiddler.

Adults will be able to enter the baking contest with breads, cakes, pies, tarts and rolls. All of these items will be auctioned off after the winners have been selected by the judges.

Don Gottwig will judge the Hog Calling Contest with the assistance of Elmer Olson.

WALTS FINE FOODS and Al's Meats

Fresh Fruit and Produce

7 DAY SPECIALS

CHOICE BEEF

Week of August 6-12

in Downtown Key Center

BREAD	2/89	GRADE A TOM TURKEYS	75¢ lb.
PARADE MACARONI & CHEESE 7 1/4 oz	4/1.00	CHOICE SIRLOIN TIP STKS.	\$2.49 lb.
HUNTS 29 oz. SLICES or HALVES PEACHES	59¢	CHOICE SIRLOIN TIP ROAST	\$2.29 lb.
HUNTS PEAS 15 oz.	49¢	LEAN GROUND BEEF	\$1.69 lb.
6 PAK 12 oz. PEPSI	\$1.39	CHICKEN LIVERS	69¢ lb.
LANGENDORF COOKIES 5 oz.	3/\$1.00	ARMOUR 12 oz. SAUSAGE ROLLS	99¢ ea.

HOT WEATHER-HOT BUYS!

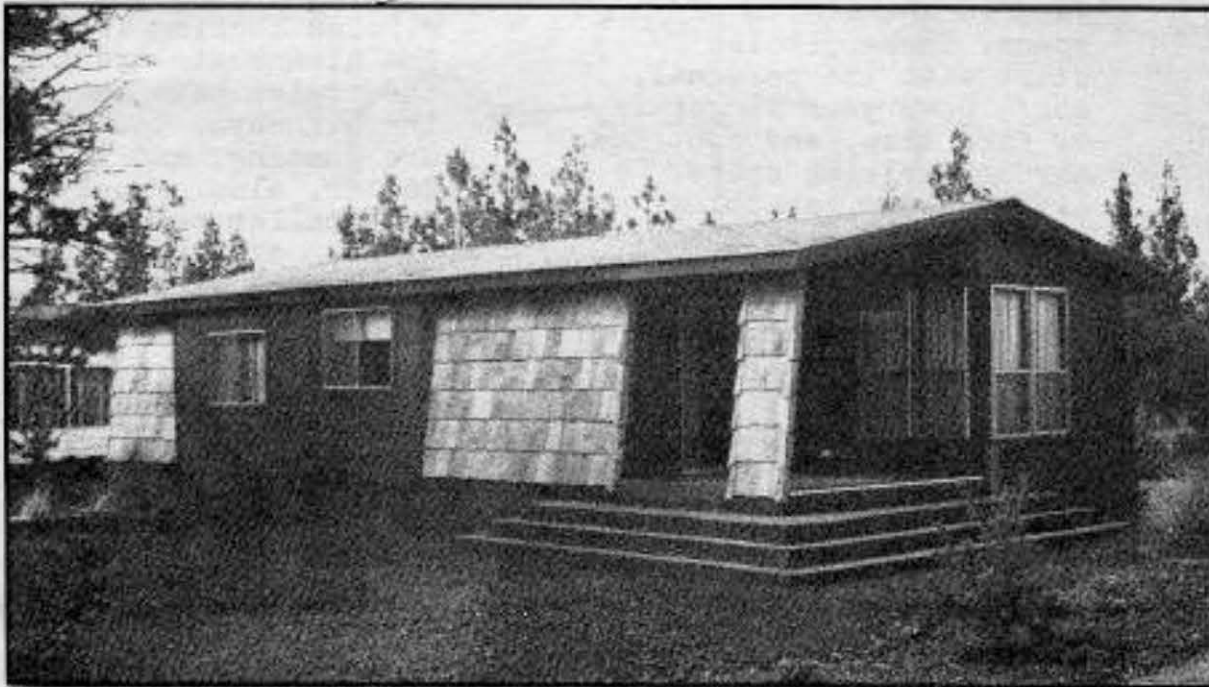
ChaCo
 9215 - 54th Ave. NW
 Gig Harbor, WA 98335
 Hwy 16 between Gig Harbor and Purdy
 "Under the Wind-Blown Banners"

Gig Harbor 858-7718 Tacoma 272-3778

WORTH FINDING

homes

*Exciting
 Affordable
 Homes*



FIRST CABIN.

- Full composition roof
- All wood construction
- Wood exterior
- Wide selection of paneling and color decor

\$27,475

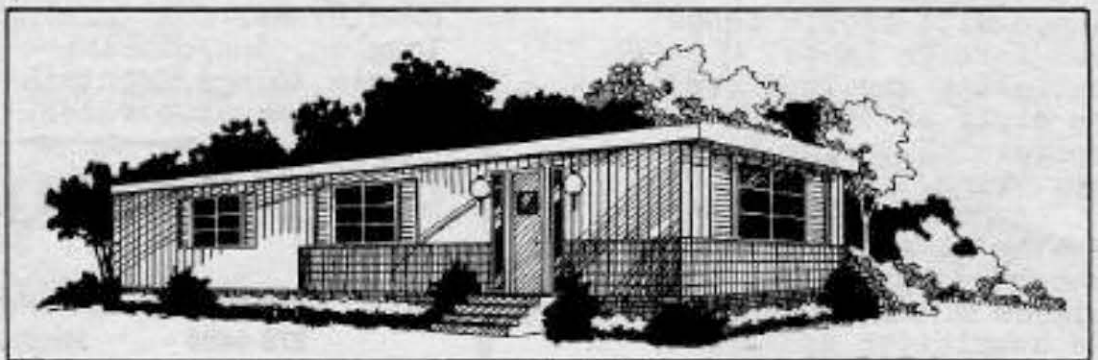
Bring in this ad for a \$500 discount on the home of your choice.

Find your lifestyle in mobile home living

Camelot

- 23 selections of floor plans
- A multitude of options

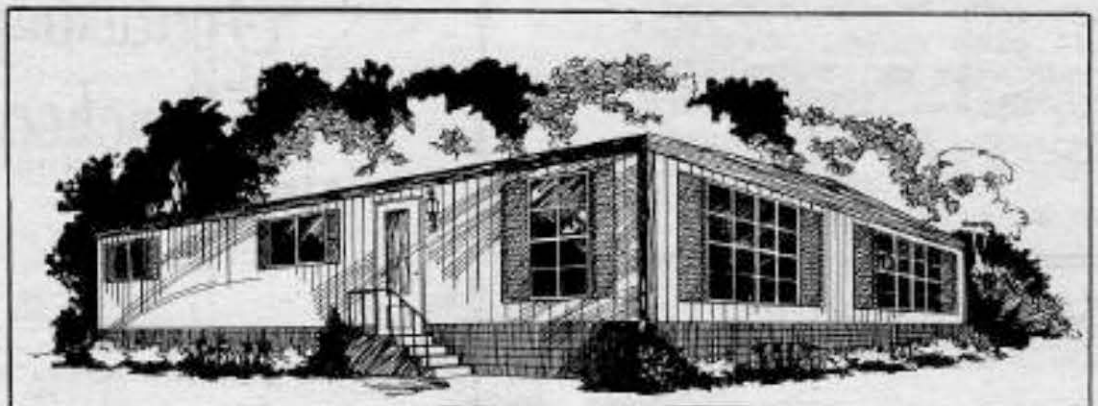
\$13,000 - \$39,000



Corinthian

- Featuring Washington's No. 1 floor plan, with 1344 sq. ft.

\$12,000 - \$28,000



ChaCo has the home for you!

**PENNANTS #609
COOTIETTES**

A picnic was held in place of the regular Cootiette Club meeting July 19. Members all contributed a dish for a pot-luck and congregated at Dottie Lambert's place on Horseshoe Lake.

C.G.B. Judy Wilson, Marie Schwenka, Alice Palmer, Irene Mcvicker and Susie Bond visited Rocky Bay Home, taking gifts for Father's Day. They also took cookies to Cottesmore Nursing Home.

July 24, members visited the Bremerton Naval Hospital.

Pennants are busy clipping coupons these days, from magazines and newspapers. These will go for the purchase of a kidney machine. Irma Kelly is busy counting them and mailing to an address in Seattle.

Members hope for contributions of coupons from other interested people in the area.

Past Supreme Grayback, Hazel Fenton, and her sister, Pearl Roberts, who is Grand Registration Assistant, will attend the Supreme Crawl, as delegates, in Erie Pa., on August 3rd and 4th.

The nursing home visits to Rocky Bay and Cottesmore are Thursday, August 9th.

The Pennants #609 Cootiettes, will take part in the Pioneer Celebrate being held at the Civic Center, Sunday August 12th.

At our regular meeting August 16th, we will have an International Pot Luck dinner with exotic foods from foreign lands, at 6:30. Cootiettes should dress in the style of the country represented by the food they bring.

August 28th is the regular time to visit Bremerton Naval Hospital. This is an afternoon visit. The Cootiettes usually have lunch in Bremerton. Hope more of the members will plan to go. Get in touch with Chief Grayback, Judy Wilson, or Hospital Chairman, Marie Schwenka.

-Thelma Cadie,
W. 5 Chairman



DON'T DENT MY CIRCLE

Everyone is in the center of the universe. He, or she, is surrounded by circles of different sizes, which extend outward to the limits of space. These circles start with the personal, don't poke your finger in my face size, and continue through walking space, living space, shopping space, recreation space, and so on and on.

Communities, like people and animals, are based on circles. Old time train and boat landings formed the nucleus of circular developments that were within walking distance. The circles of towns and cities were connected by transportation webs of steamboats, streetcars, and railroads. Mass transportation was cheap, efficient, and seldom killed people.

Shopping in the old towns and cities was easy, because businesses were concentrated within the walking circle. The country was for farming, logging, and similar simple things, contained within larger circles.

The people who lived there were called squareheads and hicks, by roundheaded city slickers, who looked down on clamdigging and other country occupations which they have now encircled.

Oblong automobiles came along and began denting circles. Dented circles are not comfortable, so the cities became sick, from all the crowding and denting. Businesses moved their little circles out in the country, denting the country circle and raising its taxes. All the little people circles are now running around in big circles looking for gas. The steamboats are gone, the trains have taken over the highways, the rails are rusting, and the dollar, also circular, is now smaller than a fourbit piece. All this because of so much circle denting by the automobile.

The Calico Kitchen

OPEN - 10 A.M. - 5 P.M.
TUESDAY THRU SATURDAY
BAKERY GOODS TO GO!
Order in advance

X-C Corral 884-2029
KEY CENTER

GOLDEN UNICORN

CHINESE-AMERICAN RESTAURANT
275-5424 Highway 3 in Belfair

Featuring Dinner & Luncheon Specials

- Lemon Chicken
- Beef Chow-Fun
- Pepper Scallops
- Lo Hon Gee Vegetarian Dish

ORDERS TO GO

NOW SERVING BEER, WINE AND COCKTAILS

OPEN 11 A.M. 7 DAYS A WEEK

BREAKFAST SERVED 11 A.M. TO 3 P.M.

金麒麟酒家



SAKURA NURSERY

Key Center, Wa.

- *BONSAI
- *BEAUTI-BARK
- *ORNAMENTALS

CLOSED: SUN-MON

OPEN: TUE-SAT 10AM-5PM



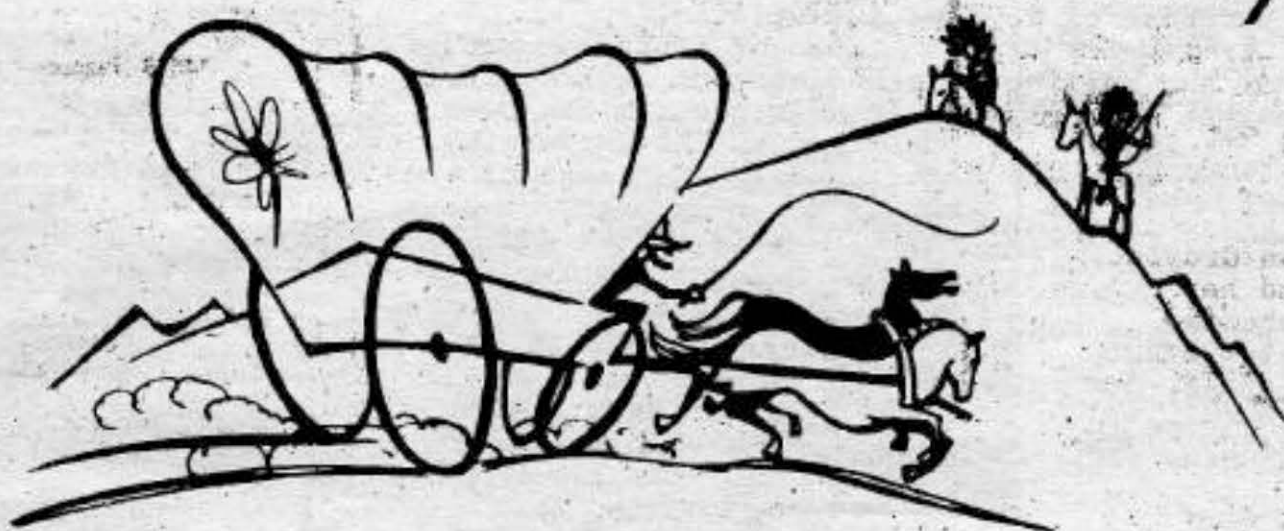
Key Peninsula Civic Center

Vaughn, WA.

Presents

Pioneer Days

August 12, 1979 «» Noon to 6:30 p.m.



FUN FOR ALL!

Featuring

LOGGING DEMONSTRATIONS

- RAISING A "GIN POLE"
- LOADING LOGS WITH A STEAM DONKEY
- MODERN SELF-LOADER
- HYDRAULIC RAM
- WORLD'S FASTEST CHAIN SAW
- SHAKE SPLITTING

HORSESHOE TOURNAMENTS

HOG CALLING CONTEST

ARM WRESTLING
(FOR JRS. & SRS.)

SQUARE DANCE DEMONSTRATION

CHILDREN'S GAMES

VOLLEYBALL GAMES

ANTIQUE EXHIBITS

CRAFTS AND UNUSUAL DEMONSTRATIONS

BAKING CONTESTS (FOR ADULTS)

- PIES
- CAKES
- BREAD
- TARTS
- ROLLS

BAKING CONTEST
(FOR CHILDREN UNDER 12)

- COOKIES
- BROWNIES

Super Delicious

"COUNTRY COUSIN DINNER"

(DINNER WILL BE SERVED FROM 3 TO 6 P.M.)

\$4.50 ADULTS - \$2.25 UNDER 10

INCLUDING THESE FAVORITES:

Country Style Bar-B-Qued Chicken

Corn on the Cob

Old Fashioned Potato Salad

Relish Fixin's

Sour Dough Rolls

SURPRISE DESSERT

Coffee

Ice Tea

Milk

No Dinner Tickets Sold at the Door

SPECIAL ATTRACTION

Ft. Lewis Command Parachute Team

and

The Old Time Fiddle's Assoc.



THIS PAGE COMPLIMENTS OF

THE PENINSULA BANK

GIG HARBOR

PURDY

POINT FOSDICK SQUARE

884-2345

Member FDIC



by VALDA YOUNG

This is vacation time and hopefully we will not have a repeat of the excessive heat July has already provided. If you plan to be away for a week or ten days, a thorough soaking will usually be adequate for lawns, shrubs, and healthy gardens. A longer stay calls for a garden sitter.

The problem of house plants and those container grown things so popular now can be resolved by moving them to a spot that gets little or no sun; the north side of a building, under the branches of a low growing tree. Do not put them in a garage or shed. They need good air circulation and access to any fog, dew, or moisture that falls. Place the pots close together and pack very wet peat moss around them. I have had tiny bonsai that normally need water twice daily revive in good shape for ten days with that treatment.

Your tomatoes, mums and dahlias can use a handful of sulfur phosphate or any low nitrogen fertilizer now.

Do disbud some of your large mums and dahlias now. Leave only one bud, the center one, on each stem. Remove the small secondary shoots that develop at the leaf axis so you have a clean stem for your big bloom. For the non-horticulturists the axis is the spot where a leaf joins the main stem. Do not remove leaves, they provide a frame for your bloom.

Watch for insect damage, aphids can appear overnight and earwigs need to poke their snout into a bud only once to produce a distorted lopsided bloom.

Those ugly bites taken at leaf edges are done by beetles.

There are several varieties, all hard to eradicate. Consult your nursery man for the proper insecticides.

Home or natural remedies are endless but ineffective. A ten year program has been conducted by the University of Illinois using most of the better known natural remedies and none were effective. Some were even so attractive to the pests that the infestation was worse when used than on non-treated plants.

If you object to using insecticides, a well grown healthy plant is more resistant than a weak spindly one and you can wash off with a strong water spray or hand pick some bugs.

SHIP AHOY!

Vacation Bible School will start soon at the Vaughn Community Church. From August 13th through August 17th, children 4 years of age through the 6th grade will "sail through" Bible adventures from 9:00 a.m. until noon.

Each lesson will have a nautical theme, so appropriate for the "Chapel By The Sea". The construction to enlarge the church will not interfere with the program. For further information, call the Vaughn Community Church.

VFW AUXILIARY

The Lakebay V.F.W. Auxiliary No. 4990, will hold their meeting August 13th at the home of Jackie Gottwig. After the meeting, refreshments will be served by the President in her yard. Irma Kelly, Helen Helm, Marguerite Bussard, will visit Rocky Bay Home with treats and birthday gifts for all those having birthdays in August.

GRANGE PICNIC

The annual Upper Sound Grange Picnic will be held at the Vaughn Bay home of Elmer and Elsie Olson on Sunday, August 5th from noon on. The ladies are to bring fried chicken or meat and their favorite salad or dessert. The coffee and punch, watermelon and ice cream will be served. All Grangers are welcome to come and bring their families and friends.

THE NAPACARD
IS HERE!
FREE AT PERRY'S
IT'S EASY - IT'S FREE
and EVERYONE WINS!

ALL YOU DO IS GIVE US YOUR NAPACARD EACH TIME YOU MAKE A PURCHASE OF 50¢ OR MORE, WE WILL PUNCH OUT THE AMOUNT OF PURCHASE AND WHEN THE CARD IS FULL YOU DRAW YOUR PRIZE. PRIZES INCLUDE:

COMPRESSION TESTERS
 NAPA HATS
 SNOPPY KEY CHAINS
 GREASE GUNS
 OIL
 JUMPER CABLES
 MUD GUARDS
 AIR FRESHNERS
 MACS CHEMICALS
 AND MUCH MORE!

GET YOURS TODAY AT -
PERRY'S AUTO PARTS
 NO CARDS TO DEALERS
 OLYMPIC VILLAGE 858-9149



BUTTONS AND BOWS
 K.C. CORRAL
 Key Center
 884-3971

SUMMER DISCARD PATTERNS NOW AVAILABLE AT 25¢

Exciting new fall fabric arriving this month!



JEANNE BROADSACK, NURSE PRACTITIONER, WITH ONE OF HER FAVORITE CUSTOMERS AT THE KEY PENINSULA HEALTH CLINIC, LONGBRANCH

"Someday I'm going to run into a case of the plague out here and I want to be able to know it when I see it." Mentioning research she once did on a case of the plague in California and waving a recent medical journal article on the plague, Jeanne Brodsack hustled off to read about this disease.

Such characterizes Jeanne, the Director of the Key Peninsula Health Clinic. While obtaining her nursing

degree, she taught herself astronomy and French; in her spare time, between continuing her nursing studies, working and raising six children, she took a correspondence course in accounting. Interested in all aspects of life, her inquisitive mind and enduring energy has touched lives from Manson, Iowa, where she was born the oldest of 11 children, to Oklahoma and Virginia before settling in Washington State nearly 30 years ago. In addition to having her Masters in Public Health Nursing, she has a minor in Communications and her license as a Nursing Home Administrator. In 1972, while staying at the home she and her husband, Don, own in Home, she wondered how Peninsula residents received health care and found that the only alternatives were in Bremerton, Gig Harbor or Tacoma. Drawing on her energy and enthusiasm, she gathered a group of interested Peninsula residents to develop what was to become the Key Peninsula Health Clinic.

The doors to the Clinic were opened on donations and volunteer nursing staff in November 1972 and have been open since then to serve all who need "first line" health care. During all these years, Jeanne has continued to welcome patients with a smile and an interest in helping each to understand more about good health care. Though keeping the

Clinic doors open has been much like a roller coaster, her smile and optimism has persevered, bolstering lagging spirits and spreading hope and faith.

While working fervently at the Clinic, she also was involved in other organizations in Tacoma, such as the Mental Health Clinic, Catholic Services and the Community Action Agency, to name a few. This year she was honored by the Municipal League as one of its Distinguished Citizens for her outstanding contributions to the welfare of all in the area. And no wonder!

On August 15th, Jeanne will be leaving the Clinic as a regular staff member to pursue other avenues of life. That night there will be a dinner to honor her at the Longbranch Community Church beginning at 6:00 p.m. She has touched more lives than anyone will ever know. The Board of Directors of the KPHC wishes to extend to all residents an invitation to the potluck dinner to honor Jeanne, who has given so much to so many out here. As one volunteer at the Clinic said, "She has given more to his area than we will ever hope to know". That's Jeanne - unending love for those whose lives she has touched. Please help return some of that love on the 15th.

FEATURING THE GAS SAVER STEEL BELT RADIAL

- Two full width steel belts
- Two radial body plies of smooth riding polyester
- Wide 70 series profile
- Handsome white sidewall styling
- Road Hazard



CENTENNIAL TIRES

50,000 MILE WARRANTY
CENTENNIAL TRADITION TO STEEL BELTED RADIAL

Product of Dunlop

FREE Mounting and computer balancing of tires purchased at D.J.'s TIRE



SPECIAL COMPUTERIZED SPIN BALANCE

4 Car Tires \$14⁰⁰

4 RV's & Pick-ups \$16⁰⁰
mags extra

D.J.'s TIRE SERVICE

12118 Cramer Rd. N.W.
(Camp Seymour YMCA Rd.)
Gig Harbor, WA 98335

857-6430

OTHER TIRES AVAILABLE AT A GOOD SAVINGS
4-ply polyester - 2+2 glass belts

- RV's & Truck Tires + Tires for Foreign Cars

Open 8 to 5 Monday, Friday and Saturday
Open 8 to 8 Tuesday and Thursday
Closed Wednesday and Sunday

857-6430

FULL TRUCK TIRE SERVICE
20 YEARS EXPERIENCE



SPECIAL BOARD MEETING

The Key Peninsula Park Board met Thursday, July 19, because community pressure caused the Board to reassess their previous commitment to a joint entrance for the Park and the new middle school to be built adjacent to it.

Members of the community aired their concerns at this meeting. They felt the school and park should be separate entities, even their entrances and that local control of the entire park should be retained, rather than deferring to school board decisions.

The Park Board then passed a resolution for a separate entrance, a buffer zone between the two properties and consideration of drainage problems from new construction.

The next regular Board meeting will be Thursday, August 2, at 7:30 at the Civic Center.

KEY PENINSULA SPORTSMEN CLUB

The Club's regular card party will be held August 4th. The meeting and dinner will be August 9th. Sunday, August 12th is the date chosen for the Club's annual picnic.

A pot luck dinner and game Night is scheduled for August 24th.

MOTORISTS BEWARE--CHILDREN AT PLAY!

As schools close for the usual summer months, many more youngsters will be taking to the outdoors for fun, sun, play and relaxation.

Unfortunately, most drivers will not share this lengthy summer vacation and their daily work will go on as usual. This will necessitate the drivers to alter some of their driving habits somewhat.

Motorists on the peninsula are encouraged to drive at a lower rate of speed, be alert for youngsters at recreational sites, be especially cautious when backing out of driveways, steric parking lots or entering traffic flow.

Curves, trees and blind spots can create excellent hiding places for young children at play. Let's try to keep our children safe during this vacation period--**DRIVE CAREFULLY!**

LETTER TO THE EDITOR...

We are an elderly couple living nine miles from the nearest public transportation. The day will soon come when we can no longer drive.

We see school buses sitting idle for hours between taking children to school and returning them home.

Why could not these buses make runs to Purdy to meet buses to Tacoma and Bremerton, then after school is out, make runs to Purdy to meet the late buses from town.

The drivers could be paid from fares collected from grateful citizens and there might even be some money left over for maintenance.

Sincerely,
Cora G. Chase

NEW RESTURANT OPENS IN ALLYN

Eric and Vicki Napoleone have just arrived in this area after spending three years living in Auatralia.

They were married in 1976. Eric is an Italian Australian. Vicki was born in Seattle. This explains the mixture of the food which will be serve at "Enrico's Resturant" which has recently opened in Lakeland Village Golf and Country Club.

Hours are from 11 a.m. to 7 p.m. daily. The food is Aerican Italian and Australian. Friday night is home made pizza night.

Everyone is invited to share some interesting facts about the "Out country" and will also be interested in some of the Australian arts and crafts which are for sale.

If you wish to phone for a reservation the number is 275-5027.

PICNIC AT THE PARK

The annual picnic for Park volunteers and all interested community members will be Sunday August 18 at the Key Peninsula Sports Park three miles south of Key Center on the Longbranch Highway.

People will start to gather at noon. For the potluck lunch, bring a main dish and a salad or a dessert, plus tableware and silver. Pop will be provided.

Be prepared to play baseball or to cheer the players on because people of all ages are looking forward to the annual game. There'll be time for volleyball and frisbee too.

Warner's Jewelry

NOW OPEN

We make and repair jewelry

- TURQUOISE
- CORAL
- BEARCLAWS

876-3280 at Horseshoe Lake
15530 Sidney Road S.W.
Port Orchard, Wash.

Petersen's Quality Meats

Located at
Bridgeway Market
(Next to the Purdy Bridge)

- BEEF SALE -

- ½ OF BEEF - \$1.39 LB.
- HIND QUARTER - \$1.59 LB.
- FRONT QUARTER - \$1.29 LB.

ALL USDA CHOICE - YIELD TO ONLY ONE QUALITY - THE BEST!

CUT AND WRAPPED TO YOUR SPECIFICATIONS

CALL 857-4191 ASK FOR BEN



New Skating Time Begins Sunday, Aug. 19

NEW HOURS: 6:30-9:30 P.M.

FAMILY RATE: 4 FOR \$5.00

UP TO 6TH GRADE: \$1.25

JR. & SR. HIGH: \$1.50

ADULTS OVER 18: \$1.75

COME PLAY! ENJOY SKATING!

Shorewood Real Estate, Inc.

Key Center 884-3303

Juanita Saathoff
Joyce Tovey
Patricia Parrish
Dave Olsen
Pam Hayward

Key Center Branch
P. O. Box 345
Vaughn, Washington 98394

857-4276


Merle Free Automotive Repair

ALL WORK GUARANTEED

over 30 years experience

1½ MILES ON CREVISTON DRIVE - 1ST LEFT TURN SOUTH OF THE FRUIT STAND

CELLAR ARTS and CRAFTS



Classes • Gifts • Supplies
Tote and Decorative Painting
Decoupage
Macrame

Hrs.: 11:00 AM - 6:00 PM
Sun. 1:00 - 4:00 PM

Phone 856-8091

7804 Pioneer Way P.O. Box 244-A Gig Harbor, WA 98835

JEFF CHARBONEAU

Road Building Landscaping Excavating
Land Clearing Foundations

884-2971 RT. 1, BOX 142-A VAUGHN, WA 98364

L.E. Jopp Builders

- ★ Carpenter Work
- ★ Foundations
- ★ Bulkheads
- ★ Concrete Work etc.

884-3841

LICENSED & BONDED CALL COLLECT

DUANE G. FLEMING

Cascade Insurance Underwriters Inc.

2200 6TH AVENUE • TACOMA, WASHINGTON 98403

AC 206/627-3133 Residence 884-3340

JERRY'S CAFE

DOWNTOWN KEY CENTER

884-3707




John Brewer (206) 857-2253

BREWER ELECTRIC CO., INC.

Residential-Commercial

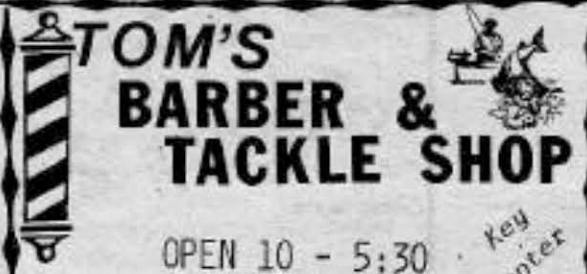
14519 Peacock Hill Avenue, N.W.
P. O. Box 228 Burley, WA. 98322



The Fruit Stand

LOCATED 2 1/2 MILES WEST OF PURDY ON HIGHWAY 302

TOM'S BARBER & TACKLE SHOP



OPEN 10 - 5:30 TUES. THRU SAT. Key Center

SMSB
State Mutual Savings Bank
Member FDIC

LOCATED DOWNTOWN
GIG HARBOR PH. 858-9927
Nine offices serving Pierce Co.

MINTER CREEK DRILLING
and Complete Water Systems
Pump Sales & Service



EARL FOUTCH Owner 857-4609 Gig Harbor

Burcar Fireplace Screens
Serving Gig Harbor and the Peninsula Area since 1967

WE CAN SCREEN
"ALL YOUR HEARTH'S DESIRES"

JIM BURCAR FREE ESTIMATES
8026 WARREN DRIVE N.W.
GIG HARBOR, WN.
265-3468

JERRY YORK

York Insurance Agency
Auto • Life • Fire • Health & Accident

Post Office Box 364 Gig Harbor, Washington 98335 Office 888-8580 Res. 857-8587

BURTON MACHINED PRODUCTS

JACK BURTON 884-2877

TUES. THRU SAT.
7:00 A.M. TO 3:30 P.M.
KEY CENTER, WA. 98335

GLASSFYRE



BELFAIR WOOD PRODUCTS

Shakes, Ridge Cap and Siding
Custom Flat Sawing and Band Saw Shakes
BUY: FLAT SAW WOOD AND SHAKE BOLTS

CR. 5-3432 Home CR. 5-3194 Mill

LUCILE'S BARBER SHOP

Hours: Tuesday thru Saturday
9 a.m. to 6 p.m.

1 short mile south of Rocky Bay Health Care Center on Hwy. 302 going to Shelton

884-3732

ENELCO, INC.

COMMERCIAL - RESIDENTIAL ELECTRICAL INSTALLATION



P.O. BOX 65 VAUGHN, WASH. DON MILLS PH. 884-2511

THE FIREPLACE CENTER ETC.

Fireplaces & Accessories
Custom Built Fireplaces
Complete Line of Masonry

BELFAIR, WA. 98528 LEONARD & HILDEGARD HOHMANN

Bus. 275-6165 Res. 275-6473

PROOF OF GROWTH

Evidence of rapid growth on the Key Peninsula can be found right here in our own paper. If you read back over issues from the last three years, almost every one of them has an article about a new business opening, sometimes more than one mentioned in some issues.

Further proof is the fact that Peninsula Light Company has been hooking up about 100 residents a month for the past year.

The schools are keenly aware of the growth, too. That is why both Vaughn and Evergreen will have construction this year to house several new classrooms.

And logging? Seen everywhere. Some for sale of timber, some to clear for houses. All these factors are leading to changes in our local scene. Some create advantages in services closer to home. Others are going to make permanent changes in our geography and resources. Are we ready for it?



NEW ADULT NON-FICTION BOOKS AVAILABLE THROUGH OUR PIERCE COUNTY LIBRARY SYSTEM

- Sunset new western garden book. (635.0978)
- Rodale's naturally delicious desserts and snacks. (641.86, Martin)
- Dining naturally in the Pacific Northwest. (NW 647.9579, Pruitt)
- Career strategies. (650.14, Souerwine)
- Abreviatrix (Shorthand in 4 days. (653.2, Friedlander)
- How to be self employed. (658.022, Fregly)
- Jacqueline Bouvier Kennedy Onassis. (B-Onassis, Birmingham)
- Dolly. (B-Parton, Nash)
- Memoirs of Puget Sound. (NW B-287, Blaine)
- Reminiscences of Washington Territory. (NW 979.703, Prosch)

OLD FASHIONED
SMOKE HOUSE
MEATS

MACON BACON

DEDICATED TO
FINE EATING

CHEESE, SALAMI,
SAUSAGE

C. M. WHITE
OWNER

RETAIL ONLY

857-4502

Corner of Cramer Rd. & SR 302



IN APPRECIATION

Larry Gladstone and family wish to thank all the friends, neighbors and relatives who so thoughtfully helped us following Larry's accident.

Your many kindnesses are deeply appreciated. A special thank-you to those wonderful people in our community who so generously organized and attended the Spaghetti Benefit. God bless you all.

Larry Gladston & Family

Marcia's Styling Salon

KEY CENTER 884-2479

SUMMER CLOSEOUT SALE

40 - 60% OFF

SUMMER TOPS & PANTS
MISSES SIZES 10-18
WOMENS SIZES 30-46

AUGUST 1ST THRU 11TH

ANNOUNCING THE ADDITION OF
Sue Henderson to our staff

TEXTURE FOAM PERM
REG. \$36.00 NOW \$30.00
DURING ENTIRE MONTH OF AUGUST
INCLUDES HAIRCUT & SET

OPEN - MON. THRU SAT.
THURS. EVE. by appointment



dump truck
backhoe
grader
blade

GRADER SERVICES
884-2271



PHIL RADCLIFFE
route 1, box 95c
lakebay, wa 98349

top soil
road gravel
rockery rock
crushed rock

**Save up to 14%
on homeowners
insurance**

Call me about State Farm
Newer Home Discount

BILL McMONNIES
Agent

3022 Harborview Dr.
Gig Harbor, WA 98335
Phone: 858-8776



State Farm Fire and Casualty Company
Home Office: Bloomington, Illinois

**Peninsula
Wood Stoves**

STOVES OF ALL SIZES AND TYPES
ALL AIRTIGHT


CHIMNEY BRUSHES AND
ACCESSORIES

VISA **857-6836** MC

NEXT TO WAUNA POST OFFICE

Key Peninsula Services


DG's Farmers Insurance Group



Myers Professional Building
7108 Pioneer Way, Suite No. 2
Gig Harbor, WA 98335

Bus Phone 858-8961
Res Phone 858-8671

DEE GORSUCH
Agent
10 - 5 Mon. thru Fri.
NO SAT.
Sat. & Eve. by Appt.



Key Peninsula Lutheran Church



REV. ED WAGNER
CIVIC CENTER - VAUGHN

SUNDAY SCHOOL: 9:30 A.M.
WORSHIP SERVICE: 10:30 A.M.

THE WEAVING POST



BOX 75
ALLYN WA. 98524

275-3868
Call for Details

SUMMER HOURS:
Wed. thru Sat.
10 a.m. - 5 p.m.

- Needlepoint,
- Embroidery,
- Spinning
- Knitting,
- Weaving

On Highway 3

Bo-Mac Gravel Co.



RT. 2 - BOX 260-C
PORT ORCHARD, WA. 98588

OPEN SATURDAY

R. F. "Mac" McCloskey
PARTNER

578-2003
857-4185

Buy - Sell - Swap

Key Center Trading Post

(206) 884-2220

7 MILES WEST OF PURDY ON HIGHWAY 302

RT. 4, Box 4627 DON & LIANA FEGLEY
GIG HARBOR, WA. 98335

CHARLIE'S SAW & MOWER



1 mile North of Key Center on Highway 302

Jacobson - Airans Dealer
Authorized Briggs & Stratton Service Center

Saw Filing Scissor Sharpening
New & Used Mowers

884-2960 Shop Home 857-6286



R. B. DRILLING & GEN'L CONTRACTING

EXCAVATING
HAULING
HOME CONST.
MASONRY
REMODELING

P.O. BOX 69
VAUGHN, WA
884-3567

HOME FRIED & GROCERY

9-7 weekdays / 11-6 Sundays
884-2321

Featuring "Choice Beef"
resh Produce
ishers Feed
riendly Service

LAKEBAY CHEVERON
at the home bridge



8a.m. - 6p.m. 884-3828


THE PLACE TO GO IN
BEAUTIFUL DOWNTOWN KEY CENTER
IS THE
KEY CENTER TAVERN



Neighbors Talking to Neighbors
in the Key Peninsula service area.

Telephone Utilities of Washington, Inc.

A subsidiary of Telephone Utilities, Inc.



Vaughn Bay Lumber Co., Inc.

Dale Van Slyke 884-2874
Harm Van Slyke 884-3738
Tom Van Slyke 884-3428

LOGGING ONLY
Route 4 Box 4712
Gig Harbor, Washington 98335

9'S FAIR HARBOR MARINA

MONTHLY AND DAILY MOORAGE

(GAS) OPEN 7 DAYS A WEEK (OIL)
BAIT-TACKLE-GROCERIES-HOT SANDWICHES
Close at 7 p.m.

P. O. Box A Phone 426-4028
Grapeview, WA. Res. 275-6417

Behind Treasure Island

Johnson Bulldozing
We Dig It!



BULKHEADS
EXCAVATING
SPECIALIZING IN BACKHOE SERVICE
WITH A SMILE

884-2362 884-2607

P Glex Photography

Peacock Professional Bldg.
Gig Harbor, WA

858-7228

PASSPORTS
COLOR VISA BLK. & WH.
I.D.

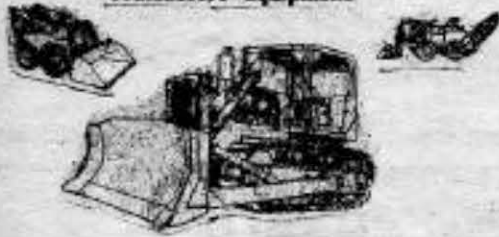
PORTRAITS
STUDIO OR OUTDOORS
SENIORS FAMILIES

COMMERCIAL COPIES

PENINSULA RENTALS

Located 1 mile north of Key Center on S.R. 302

Contractors' Equipment



WELDING

OPEN 7 DAYS A WEEK

884-2960

Key Peninsula Services

Country Health Foods



CHEWABLE ACEROLA
VITAMIN C - 300 MG.

KEY CENTER 884-3977

KEY WESTERN BUILDING CENTER & HARDWARE

SPECIAL



10% OFF
ALL 4' X 8'
PRE-FINISHED
PANELING

LOCATED IN KEY CENTER

AL'S MEATS

(PURDY TREATMENT CENTER EXIT)

9606 STATE RD. 16 N.W.
GIG HARBOR, WA. 98335

U.S.D.A CHOICE LOCKER BEEF
WILD GAME PROCESSING
CUSTOM CUTTING AND WRAPPING
MOBIL SLAUGHTERING

DON PACK, OWNER & OPERATOR
HOME: 858-3808
MONDAY & AFTER 5 P.M.

858-8421

LONGBRANCH Community Church



Sun. Sch.: 10 a.m.
Bible Study: 10 am
Worship: 11 a.m.

Longbranch, WA.

Longbranch Automotive Center

AUTO REPAIR	JERRY HANSEN
+ Domestic	Longbranch, WA.
+ Foreign	South of the Church
	(206) 884-3272

D&M BUSINESS MACHINES

TYPEWRITERS - ADDING MACHINES - CALCULATORS
CASH REGISTERS - COPY MACHINES

SALES REPRESENTATIVE
JIM EWING

474-8497
2520 SO. TACOMA WAY
TACOMA, WASH. 98409

Olympic West Drilling Inc.

858-7226
GIG HARBOR
State Licensed

SPECIALIZING

IN SINGLE FAMILY AND
COMMUNITY WATER WELLS

FEATURING

THE LATEST IN MODERN
DRILLING EQUIPMENT



Cable Drill



Air Rotary

FREE ESTIMATES

LAND CLEARING
ROAD CONSTRUCTION
BANKRUN - GRAVEL
FILL DIRT HAULED



Active Construction

P.O. Box 191 - Gig Harbor, WA 98335
Bus. 858-2380 - Eves. 884-2884

Alcoholics Anonymous and Al-Anon Groups Meet

MONDAY - 8 p.m. Vaughn School
Hank - 884-3023

FRIDAYS - 8 p.m. Longbranch School
(3rd Friday of the month
AA is open to the public)

AA Call: Ruby - 884-2583
Burke - 884-3262

Al-Anon: Jean - 884-3120
Betty - 857-2041

NO JOB TOO BIG!! NO JOB TOO SMALL!!
DONT CUSS-CALL US!!

HOLLAND PUMP COMPANY

- *Residential & Commercial Water Pumping Systems
- *Complete Pump Repair Service
- *Irrigation Systems
- *Goulds Pumps

For Drilling Call:
OLYMPIC WEST DRILLING CO.
858-7226

CALL: Jim Holland
265-3776
Gig Harbor



John E. Miller
Walter E. Puzan

Peninsula Accounting Associates

5209 Pt. Fendick Rd., Suite 203
P.O. Box 676
Gig Harbor, WA. 98335

206-858-8852



WANT ADS
10¢
A WORD
CALL
884-3739

THE TWENTIETH (20th) OF EACH MONTH IS THE DEADLINE FOR NEWS AND ADS FOR THE NEWS LETTER.

YOU MAY TURN IN ARTICLES AT WALT'S STORE OR CALL 884-2500.

WANT ADS ARE 10¢ A WORD, TO BE PAID WHEN THE AD IS TURNED IN. THOSE ADS SUBMITTED BY STUDENTS AND SENIOR CITIZENS ARE FREE.

TO PLACE ADS, CALL THELMA KLEIN AT 884-3847.

PAYING 35¢ lb. for wild growing Himalaya/Evergreen blackberries. Deliver to Valley Packers, 201 W. Main, Puyallup from 2 to 5 p.m., Mon. thru Sat. 845-8474. ALSO WANTED: Part-time person to handle collection and delivery to Puyallup of wild blackberries from the peninsula area. Call 845-8474.

Will do typing in my home. Reliable and accurate. Call Tammy, 884-3996

For Sale - Western saddle, good condition. \$150. 884-2271

FOR SALE: Skate board. Wooden. \$3.00 or best offer. 884-3666.

Opening August 2, The GREY GULL. Antiquated collectibles, specializing in dishes. Follow the signs to Box 370 Yeazell Road, Longbranch; or call 884-2921 for directions.

Want to clear your basement of old canning jars? Call me. I could sure use them. Mary, 884-3996

FOR RENT - Lake Holiday. New 3 bedroom home. Priveleges to lake, golf, tennis, club house and park. Large yard and carport. \$350 plus utilities. Non-smokers. 858-9019.

FOR RENT - 2 bedroom apartment overlooking Rocky Bay. \$250 per month with all utilities paid. Call 884-3739.

GARAGE SALE - August 10 and 11. 10:00 a.m. to 5:00 p.m. Tools, dinette set with 4 chairs, 2 display cases, seed spreader, chaise lounge and deck chair, 2 wall hung camper ice boxes, 1 long, narrow plate glass mirror with matching wall hung marble-like table (elegant and in excellent condition), many other items. Rt. 1 Box 14 Lakebay; On the Shelgren-Lorenze Road across from the Lakebay Marina.

Jobs wanted in Lakebay-Longbranch area. 13 year old boy will do any kind of yard work; will paint; or other jobs. Call 884-3446. ask for Dean.

FOR SALE - Baby bed - new mattress, mattress cover, 2 sheets & 2 pillow cases- \$35.00. 1 Pop corn popper- \$2.50. 1 Foot stool \$2.00. 1 Coffee table (rectangular) \$5.00. 3 canvas awnings 6'x6'- \$10.00. 1 8'x10' carpet plus foam padding (Gold & White)- \$15.00. Call Ann 884-2755.

WANTED - Refrigerator in good working condition for the Civic Center. Call 884-884-3456.

FOR T.V. repairs and antennas. Call Buzz at Lakebay. 884-2217

WANTED - Skating Manager for the Civic Center. Hours: Friday 7-11:30 p.m., Sunday 6:30-9:30 p.m. Contact Civic Center for appointment and interview. 884-2951

Reliable babysitter would like jobs around Vaughn Area mainly. Call 884-2446. Ask for Julie.

Teenage girl would like babysitting jobs in Home or Lakebay area. Call 884-2500. Ask for Janette.

HARVEST NEWSLINE

1-800-562-5620

For when and where to buy fresh, produce direct from Washington farmers -

A SERVICE OF THE WASHINGTON STATE AGRICULTURAL SERVICE. BUYERS GUIDES FOR FARM PRODUCE IS AVAILABLE AT THE KEY PENINSULA LIBRARY.

Tel-Law

IS FOR YOU

383-3624

WHAT IS TEL-LAW?

Tel-Law is a collection of tape-recorded messages written by lawyers to tell you what you should know about the law and the justice system.

You Can Find Out:

- If you have a problem
- General Legal information concerning your problem
- Where to go for help

WHAT TEL-LAW IS NOT

Tel-Law Tapes are not to be used:

- To replace your lawyer
- As legal advice for your specific problem. It is general information.

HOW DOES TEL-LAW WORK

It's easy. Just call 383-3624 and give the operator the number of the tape you wish to hear. (see opposite panels for a complete list of tapes and their numbers)

Let's say you wish to know more about a will. Simply dial the number and ask for Tape No. 14 - the operator will then play the tape for you.

The complete list of tapes and their numbers is available at the Key Peninsula Library.

TEL-LAW HOURS:

9 a.m.-12 Noon • 1:30 p.m.-4 p.m.

Any Weekday - Closed Saturday and Sunday

... CALL (206) 383-3624

EXAMPLES ARE:

YOU AND YOUR ESTATE

- 36 What is Joint Tenancy?
- 14 Why should I have a Will?
- 37 What is a Trust?
- 11 What Taxes have to be paid when someone Dies?

SENIOR CITIZEN INFORMATION

- 69 Federal Tax Benefits for persons age 65 or older.

BANKRUPTCY

- 5 How Do I take Bankruptcy?
- 4 Can Bankruptcy Help Me?

EMPLOYMENT AND SOCIAL SECURITY

- 33 Welfare Rights.
- 34 Supplemental Security Income.
- 2 What if I am injured at Work? - Worker's Compensation.
- 51 Welfare for Families with children.
- 59 State payments to Victims of violent crime.

YOU AND YOUR HOME

- 16 Rights and Duties of Landlords.
- 15 Rights and Duties of Tenants.
- 19 What to do about Noisy Neighbors.
- 18 What is Trespassing?

CONSUMER INFORMATION

- 58 Are you a Victim of Mail Fraud or Misuse of Mails?



THE PENINSULA STATE BANK

884-2345

member FDIC

1979

HOURS
Monday thru Friday 10 a.m. to 3 p.m.
Saturday 10 a.m. to noon



AUGUST

SUNDAY	MONDAY	TUESDAY	WEDNESDAY	THURSDAY	FRIDAY	SATURDAY
COME! Pioneer Day Sunday, August 12 12 to 7 p.m.			1 GAME NIGHT - GYM 7:30 p.m. COME!	2 Park & Rec. Bd. 7:30 p.m. -Office KPCC Bd. Meeting GR - 7:30 p.m.	3 Skating - 7-9 p.m. 9:30 -11:30p.m.	4 Lake of the Woods 1:30-4:30 p.m. GR Alcohol Awareness VIVITS - 7:30 p.m. GR Peninsula 4-H Club 10 a.m. to 12 VFW
5 Lutheran Church - 9:30 GR 11:30 NO SKATING	6	7 Bridge Club GR - 7:30 p.m.	8 GAME NIGHT - GYM 7:30 p.m. WIN BIG!	9	10 Lake Minterwood GR - 6:30 p.m. Skating - 7-9 p.m. 9:30-11:30 p.m.	11
12 Lutheran Church GR 9:30 11:30 PIONEER DAY - 12 to 6:30 p.m. NO SKATING	13 V.F.W. - VFW Rm. V.F.W. Aux.-GR Pierce County Nutrition Work- shop for Senior Citizens - 10a.m. to 1:00 p.m.	14 Bridge Club GR - 7:30 p.m.	15 GAME NIGHT - GYM 7:30 p.m. GIANT JACKPOT!	16 Cootiettes - GR 7:30 p.m.	17 Skating - 7-9 p.m. 9:30-11:30 p.m.	18 Peninsula 4-H Club 10 a.m. to 12 VFW SQ. DANCE - 8:30pm GYM
19 Lutheran Church GR 9:30 11:30 Skating - 6:30 9:30 p.m.	20	21 Bridge Club GR - 7:30 p.m.	22 GAME NIGHT - GYM 7:30 p.m. BE A WINNER!	23	24 Skating - 7-9 p.m. 9:30-11:30 p.m.	25 FIREMAN'S BALL 10-2 p.m. - GYM (Tickets available at Fire Station No. 2).
26 Lutheran Church GR 9:30 11:30 Skating - 6:30 9:30 p.m.	27 Pierce County Nutrition Work- shop for Senior Citizens - 10a.m. to 1:00 p.m.	28 Bridge Club GR - 7:30 p.m.	29 GAME NIGHT - GYM 7:30 p.m. ENJOY YOURSELF! BRING FRIENDS!	30	31 M-M-Mmmmm GOOD! "Country Cousin Din- ner" - August 12 3 to 6 p.m. Buy you ticket before August 6. NO TICKETS WILL BE SOLD AT THE DOOR!	