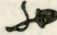


Order



VOTER'S Hand Book

A Compilation of
Facts and Fig-
ures for the benefit
of the Electors of
Pierce County 

Published October, 1914



Don't Fail to Vote at the
General Election, Nov. 3rd
See that your neighbors vote



PRESIDENTIAL VOTE, 1908-12.

1908

Taft (R), 7,679,006; Bryan (D), 6,409,106;
Chafin (P), 252,683; Debs (S), 420,820.

1912

Taft (R), 3,484,956; Roosevelt (P), 4,119,507;
Wilson (D), 6,293,019; Debs (S), 901,873.

WASHINGTON, 1912.

Roosevelt 113,698
Wilson (D) 86,840
Taft (R) 70,445
Debs (S) 40,030
Chafin (P) 9,760

Total votes cast 331,790

President, Woodrow Wilson; Vice President, Thomas Marshall; Secretary of State, William Jennings Bryan; Treasury, William Gibbs McAdoo; War, Lindley Miller Garrison; Department of Justice, W. T. Gregory; Post Office Department, Albert S. Burleson; Navy, Josephus Daniels; Interior, Franklin K. Lane; Agriculture, David F. Houston; Commerce, William C. Redfield; Labor, William B. Wilson.

U. S. SUPREME COURT.

Edward Douglass White, Joseph McKeinia, Oliver Wendell Holmes, William R. Day, Charles Evans Hughes; Willis Van De Water, Joseph Ruckner Lamar, Mablon Pitney, and James Clark McReynolds.

U. S. Senate has set as court of impeachment nine times. Removals from office: Judge John Pickering, 1804; Judge West H. Humphreys, 1862; Judge Robert W. Archbald, 1913. Others acquitted.

Population of United States, 1910... 91,972,266
Outlying possessions 1,429,885
*Urban population, 1910 42,623,383
**Rural population 49,348,833

*34.8% increase in ten years.

**11.2% increase in ten years.

Strikes—'81 to '05, 36,757; number establishments affected, 181,407; strikers, 6,728,048; number thrown out of work, 8,703,824.

Lockouts—'81 to '05, 1,546; number establishments, 18,547; number locked out, 716,231; employes thrown out, 825,610.

Strikes—'81 to '05, per cent succeeded 47.94; succeeded partly, 15.28%; failed, 36.78%.

Lockouts—'81 to '05, per cent succeeded, 57.20%; succeeded partly, 10.71%; failed, 32.09%.

(Reports of Bureau of Labor, Department of Commerce)

THIRD CONGRESSIONAL DISTRICT.

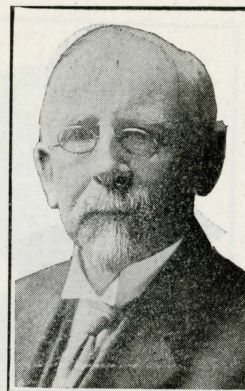
Pierce, Thurston, Lewis, Skamania, Chehalis, Pacific, Cowlitz, Wahkiakum, Clarke and Mason.

1912 VOTE FOR CONGRESSMAN.

(District as now composed.)

Johnson (R), 22,770; Warburton (P), 22,369; Munday, (D), 15,160. The Democrats have always been hopelessly in the minority in this district.

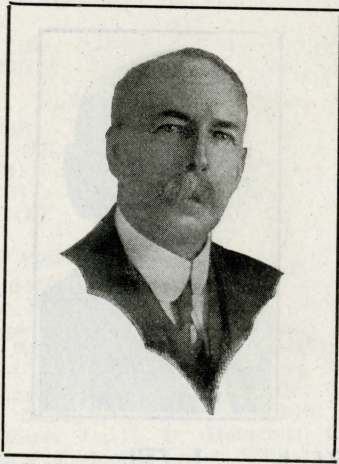
OF PIERCE COUNTY



Walter J. Thompson

**PROGRESSIVE CANDIDATE FOR
STATE REPRESENTATIVE
36th District**

IF ELECTED to the Legislature I shall oppose the proposed \$4,000,000 bond issue for new State capitol buildings or any other sum for that purpose, and all like raids on the present and future treasury of the State. Taxes can never be reduced unless we quit wasting money. Most of the waste originates at Olympia by vicious and foolish legislation. I am against trading votes and pork barrel methods. I would make it a crime to swap votes. Practically all Legislation should be non-partisan and all bills should be voted on strictly on merit, free from any party bias. We must stop starting by insidious small appropriations, the schemes that lead to enormous outlays in the future. I oppose the Quincy Irrigation bond issue of \$40,000,000. The appropriation of \$350,000 for a Temple of Justice, which will now cost \$1,000,000 to complete and furnish, is an example of a legislative fraud on the people. Some of the road schemes are similar. I am against returning to the convention system. I am for the integrity of the primary. Amendments should be in the interests of free independent voting and not in the interests of party bosses and party machines. I favor agricultural, industrial and vocational training in our public schools. We must get more in efficiency in constructive education for the immense sums spent for school purposes.



Cyrus M. Knox

PROGRESSIVE NOMINEE FOR
STATE REPRESENTATIVE
37th District

FOUR cardinal principles we must continue to fight for:

1st. "The Rule of the People"—

Our direct primary, initiative, referendum and recall are in jeopardy.

2nd. "The Extension of Nationalism"—To reach evils common to all the states, as child labor, polygamy, divorce, gambling on stock exchange, etc. We must also have a national presidential primary law and a federal woman suffrage law.

3rd. "Social and Industrial Justice"—Workman's compensation law with first aid to injured, mothers' pension law, one day's rest in seven, etc.

4th. "Conservation of Our Natural Resources"—There is a concerted effort on the part of some to have our National Forest Reserves restored to the Interior Department and opened up to settlement. This would mean their skinning and the total destruction of this, our greatest natural resource. Beware and read carefully a certain plank in the Republican State Platform.

Preparation and Qualification for the Office.

Born in Lake Co., Ill., 56 years ago; educated at Northwestern University. Taught school 15 years. Justice of the peace 6 years. A pioneer and stock raiser in So. Dakota. A careful student of Political and Social Science for a number of years.



J. P. Rawson

Editor Puyallup Herald.

PROGRESSIVE NOMINEE FOR
STATE REPRESENTATIVE
35th District

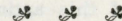
PLATFORM.

THE Progressive State platform:

Use state road money, not to build roads across the mountains for automobiles, but to build roads into the country for farmers.

Smash the Republican-Democratic "ring" that controls legislation at Olympia.

Emphasize everything that will promote the interests of the home and the welfare of women and children.



William H. Seward said in 1858 regarding the new Republican party in reply to stand-pat press, which sought to vilify those who stood for human welfare:

"They who think it is the work of interested or fanatical agitators and therefore ephemeral, mistake the cause altogether. It is an impossible conflict between opposing and enduring forces."

The Progressive party stands for human welfare now.



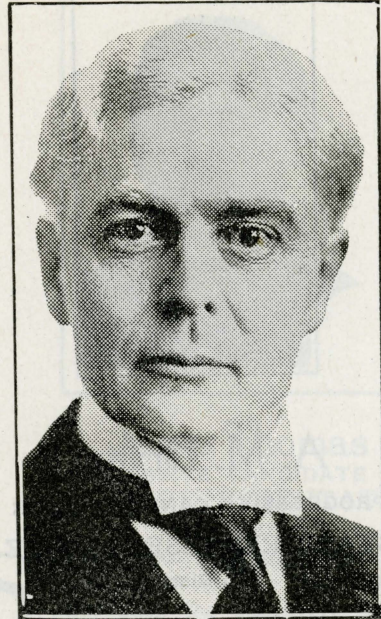
E. F. Masterson
PROGRESSIVE NOMINEE FOR
STATE REPRESENTATIVE
36th District

Residence 3118 No. 24th St., Tacoma

YOU desire the men whom you select to represent you in the Legislature to be men who will do everything in their power to bring about the enactment into law of measures that are for the good of the people as a whole. To accomplish this end it is necessary for you, because of the system of party platforms now prevalent in our State upon which candidates for the various parties must stand, to look beyond the names of the mere men who are candidates and read the principles enunciated in their party platforms. I submit that if you wish to carry out the objects stated at the beginning of this article that you can only accomplish your desires by voting for the three Progressive candidates from the 36th district.



"Public spokesmen for the invisible government say that many of our reforms are unconstitutional. The same kind of men said the same thing of every effort the Nation has made to end national abuses." Albert J. Beveridge.



Ole Hanson
PROGRESSIVE CANDIDATE FOR
UNITED STATES SENATOR

Born Racine County, Wisconsin, June 6, 1874.

LEGISLATIVE RECORD

PASSED the Hanson anti-race track gambling law.

Eight-hour law for women.

Right of single men's heirs to recover damages.

Electric headlight law.

Fought for right of voters to vote on supreme court judges by direct primary.

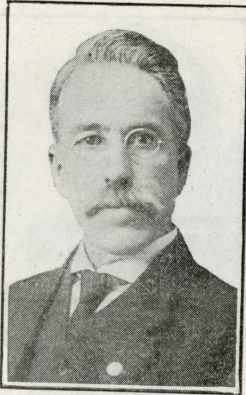
Beat iniquitous railroad mergers bill.

Worked and voted for woman's suffrage amendment.

Worked to pass laws whereby prisoners' earnings were to go to the dependent family.

Passed law making municipal bonds security for county and city deposits. This put all bonds at par, and we now receive 100 cents worth of work for our bonds.

THE PROGRESSIVE PARTY



A. M. Bryant
PROGRESSIVE CANDIDATE FOR
STATE REPRESENTATIVE
35th District

I INVITE all voters and interested citizens to examine the record of my votes in the 1913 Legislature.

I believe in a Blue Sky law that will protect all small investors against fraudulent transactions.

I favor the blanket ballot at Primary election and will not only vote but work for it.

I am opposed to the proposed \$4,000,000 bonds for a new state capitol.

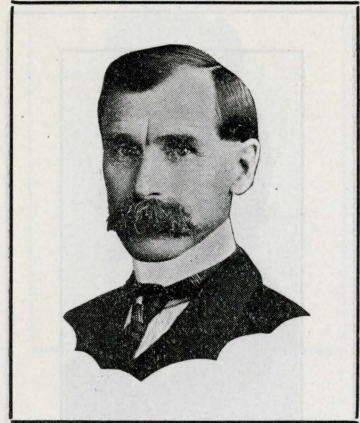
I am opposed to the proposed \$40,000,000 stock bond issue for the Quincy Irrigation project.

My votes will always be cast in the interests of the common people and the support of the Progressive platform where possible to do so and get good results. I will vote to reduce the general expenses and appropriations of the state.



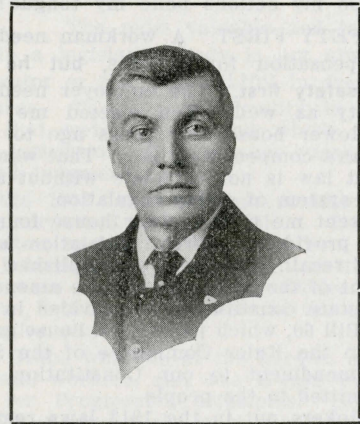
"Four opponents do not believe in democracy, let them say that the people are incompetent to govern themselves." * * * * "Representative government gave you of Illinois Mr. Lorimer."—Theodore Roosevelt.

OF PIERCE COUNTY



Jesse Thomas
PROGRESSIVE CANDIDATE FOR
STATE REPRESENTATIVE
38th District

STANDS square on the Progressive platform. Any one who knows Mr. Thomas will back the statement that he will keep the party's pledges.



Fred A. Johnson
PROGRESSIVE CANDIDATE FOR
STATE REPRESENTATIVE
38th District

MR. JOHNSON is particularly interested in a blanket primary law. He is for lower state taxes. Is a firm believer in Progressive principles.



Govnor Teats

PROGRESSIVE CANDIDATE FOR
STATE SENATOR
26th District.

"I am for men."

"Do my actions belie my tongue?"

SAFETY FIRST. A workman needs compensation for injuries, but he needs safety first. The employer needs safety as well. You elected me to the lower house four years ago to pass a workman's compensation law. That was done; but that law is not complete without a more perfect system of safety regulation.

You sent me to the lower house four years ago to provide for direct legislation and the right of recall. That was accomplished except the right of the people to initiate amendments to our state constitution as provided in Teats' House Bill 60, which passed the house and was killed in the Rules Committee of the Senate. That amendment to our Constitution should be submitted to the people.

The Jokers put in the 1913 laws regulating the initiative, referendum and recall should be eliminated.

The Unamerican, separate and partisan ballot system of our primary should be changed to a secret blanket ballot system.

A safe and proper absentee voting system should be provided to protect voters in their rights whose business compels them to be away on election day.

Good Roads for immediate use first. The mountain roads should wait. Rigid economy in all state affairs.



A. J. Gillbo

PROGRESSIVE CANDIDATE FOR
STATE REPRESENTATIVE
39th District

NO member of the 1913 legislature is more deserving for re-election than Mr. A. J. Gillbo of the 39th district, Tacoma.

The most valuable and influential man in a legislative body is not always the fine orator or the man skilful in drawing up measures. The supreme quality in a legislator that weighs most and which tends to make legislation of permanent value is that of good judgment.

In the 1913 legislature no member of the House surpassed Mr. A. J. Gillbo. His advise was often sought by other members and his final judgment on a bill was unerring. His views were always sane and wholesome, not partisan, but in the interests of the people of the entire state.

Mr. Gillbo was one of the hardest and most energetic workers, and was always found battling for Progressive principles. He was a member of some of the most important committees, such as Revenue and Taxation, Industrial Insurance, Labor and Labor Statistics, Privileges and Elections, Corporations other than municipal and railroad.

The people of the 39th district will honor themselves and the state by returning to the 1915 legislature a man of the sterling worth, sturdy honesty and strong common sense of A. J. Gillbo.

WALTER S. DAVIS.

PROMISE AND PERFORMANCE.

HOW the promises in the Progressive platform were kept by members of the last legislature elected on that ticket is indicated by the official journals of the house and senate.

Here are a few of the measures supported by Pierce county Progressive legislators:

Bill providing for presidential primary, killed in committee by standpatters.

Bill providing initiation of constitutional amendments, killed by rules committee.

Increase of compensation for workmen and further safe guards, bill shelved in committee.

Bill providing for recall of judiciary, lost by vote of 53 to 40.

Initiative and referendum, passed after hard fight.

Good roads bill providing for connection of existing highways and construction of new roads in the farming districts. Opposed pork barrel road bill.

Mothers' pension law, passed through efforts of Progressives.

Abolishment of private employment agencies and anti-child labor law, both bills died in committee.

An exception too the Progressive support of above measures should be made in the case of Representative Gilkey, who voted with the standpatters against nearly all Progressive legislation. He has since allied himself with the old republicans.

When you go to the polls Nov. 3 you will be permitted to vote on the following initiative bills:

No. 3—Prohibition.

(Originated by the Anti-Saloon League).

No. 6—Blue Sky Law.

(One of the "Seven Sisters").

No. 7—Changing Bureau of Inspection.

(One of the "Seven Sisters").

No. 8—Abolishing Employment Agencies.

(One of the "Seven Sisters").

No. 9—First Aid.

(One of the "Seven Sisters").

No. 10—Repeals Portion of Public Highways.

(One of the "Seven Sisters").

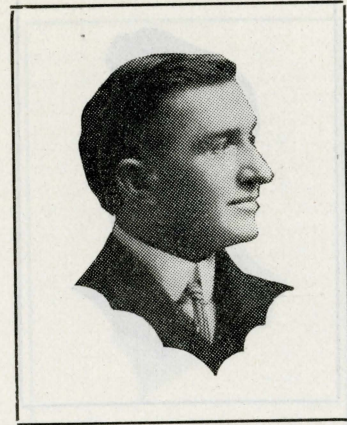
No. 13—Eight-Hour Bill.

(Fathered by W. H. Kingery of Mason county, a Socialist).

Let us progress as fast as we can,
The age of "Stand Pat" has passed.



"Abraham Lincoln was a member of the Whig party, but he was loyal to principles and not to names, and when the Whig party ceased to be an instrument of value for the accomplishment of high ideals Abraham Lincoln unhesitatingly left it and helped to form a new party."—Theodore Roosevelt.



R. H. Lund

PROGRESSIVE NOMINEE FOR
STATE REPRESENTATIVE

37th District

R. H. LUND, the candidate of Representative from the 37th Legislative District, has been a practicing attorney in Tacoma for twenty-four years. He has always been interested in the welfare of the people.

His platform is "THE PEOPLE, ECONOMY, PROGRESS."



(Ledger Editorial, Oct. 8, 1912.)

**JONES WEAKER
THAN HAY**

"Compare the vote cast for the nomination for governor for the different parties:
Reps. 88,694
Dems. 22,243
Progs. 25,623
Socs. 9,788

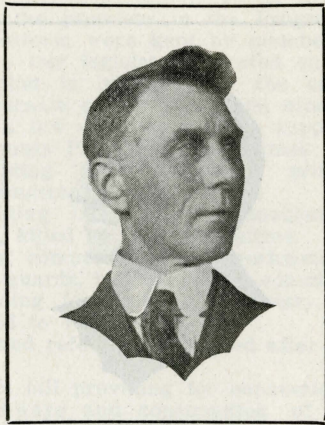
The primary vote of Hay in 1912 and Jones in 1914 follows:
Hay 69,005
Jones 66,800

Total 147,348

"Bull Moose enthusiasts had an idea their primary would make a showing that would put the Republicans to shame."

Progressive party polled in its Pierce County primary two years ago 3,017 votes. The Ledger said it was "a miniature vote." This year Progressives had 4,800 in its primaries. Republicans had less than two years ago; so did the Democrats fall off.

"Hay goes into the campaign as the nominee for governor who receive seven times as many votes as the nominees of any other party."



A. M. Craig

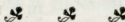
CANDIDATE FOR
STATE REPRESENTATIVE
39th District

GRADUATED from Illinois College in 1889. Taught Physics, Chemistry and Biology in the High Schools of Jacksonville and Springfield, Ill., and in Hastings College at Hastings, Neb. Failing health compelled withdrawal from the school room. Since 1900 he has lived in Tacoma, several years in the employ of the Sunset Telephone Co. He is now an electrical contractor.

In 1907-8 he was a member of the Park Board of Tacoma.

While working as a journeyman electrician he was a member of the union and was president twice of Local 76 and twice of Local 483, I. B. E. W.

PLATFORM—Machine and special privilege politics and the saloon which foster them must be destroyed.



"Our opponents ask you to be true to the party of Abraham Lincoln. I ask you to be true to the principles of Abraham Lincoln."—Theodore Roosevelt.



W. P. Goff

PROGRESSIVE CANDIDATE FOR
STATE SENATOR
29th District

Physician in Tacoma Seven Years.

I PUT principle above party, and manhood above money.

I stand for the secret and blanket primary ballot, so that no man can keep tab on how another votes.

I believe in lowering taxation:

1st. By taxing all unsurveyed lands held by private individuals or corporations.

2d. By taxing all unimproved lots and lands, held for speculative purposes, higher than those that are producing something.

3d. By limiting the number of state commissions, etc., etc.

I believe the free expression of all the people in an educated country like ours the safest, sanest and only guide to follow in all matters pertaining to government.

Therefore, I heartily support the initiative, referendum and recall in all branches of government, as now proposed.



"We are for the conservation of our natural resources; but even more we are for the conservation of human life."—Albert J. Beveridge.

Progressive Party Platform

The platform as finally adopted is as follows:

The Progressive party of the State of Washington, in convention assembled, has on time to waste in "pointing with pride" nor in "viewing with alarm." We will at once declare our attitude on the questions of the day and adopt this our covenant with the people:

We pledge our candidates to support the national and state platforms of the Progressive party as adopted in 1912.

We favor a national presidential primary law, and demand that the next Legislature enact a presidential primary law for the State of Washington that will guarantee the candidates and party policies to remain in the hands of the people and not be subject to the whims of party bosses.

We demand the enactment of a "blanket primary law" that will allow a free choice of candidates by the voter as at the general election and allow an elector to vote for one choice for a candidates if so desired.

We demand the enactment of a non-partisan county and city primary election law.

We demand a law placing all state, county and city employes under civil service regulations.

We demand that the registration laws be so amended that registration be not required except when voters change their place of residence, providing they exercise their franchise at every election.

We repledge our legislative candidates to submit to the voters a constitutional amendment providing for the recall of judges, and also an amendment providing for the initiation of constitutional amendments, in accordance with the bill which passed the House in 1911 and which was defeated in 1913.

We recommend the amendment of the minimum wage law for women workers, eliminating any possible abuse as applied to apprenticeship in industries employing unskilled labor and we favor the adoption of a state-wide minimum wage law for all wage earners.

We recommend the appointment of a fair proportion of women on all state boards and commissions, and on the boards of regents of universities and state normal schools.

We favor the enactment of a law for the establishment of vocational training and domestic science in our public school system.

We favor a uniform series of text books for the public schools of the state, to be adopted by the state board of education, instead of having 176 different boards.

We demand a broader construction of the mothers' pension law, so as to include all mothers upon whose labor children are wholly dependent.

We advocate a law making it a felony for legislators to trade votes on pending legislation.

We favor the enactment of the budget system of handling state expenses.

We favor the enactment of legislation doing away with duplication in our state asylums and educational and penal institutions.

We demand a law reducing interest on delinquent general taxes and local improvement assessments from date of delinquency to not more than 10 per cent., with no penalty attached, and all delinquent sales made to the county or city government.

We urge our representatives in Congress to secure the speedy passage of the Poindexter bill relating to the taxation of unsurveyed lands.

We demand and pledge our representatives in Congress and the state legislature to pass such laws as will destroy monopoly in our natural resources, and especially in the State of Washington, the monopoly in timber, water power and fishing industries.

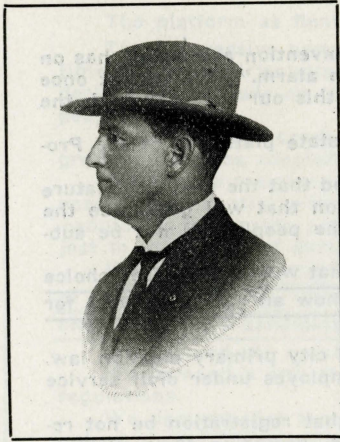
We demand the enactment of a law which will clothe the people in cities of the first class with full power to conduct and regulate local public utilities.

We pledge our legislative candidates to submit to the voters an amendment to the constitution permitting the counties of the state to adopt a commission form of government.

We pledge our representatives in Congress to do all in their power to remove the restrictions now placed upon postal savings banks as to depositors and amounts of deposits; and to establish in connection with our postoffice or land office a government department or co-operative banks to loan money directly to farmers at not more than 4 per cent interest on long time loans.

We favor a law abolishing private employment agencies and the establishment of free state employment bureaus.

THE PROGRESSIVE PARTY



R. W. Jameison
SHERIFF

CANDIDATE FOR RE-ELECTION

Comparative Statement Sheriff's Office.

Cost of Sheriff's office under Longmire, 1911..	\$16,082.04	
Cost of Sheriff's office under Longmire, 1912..	17,293.90	\$33,375.94
<hr/>		
Cost of Sheriff's office under Jamieson, 1913..	\$12,373.39	
Cost of Sheriff's office under Jamieson, for seven months in 1914, \$6,899.47—for 1 month \$985.63, estimated for twelve months on basis of experience for seven months	11,827.56	\$24,200.95
<hr/>		
Reduction of cost under Jamieson...	\$ 9,174.99	
Profit on feeding Federal prisoners at 50 cents a day for 18 months..	2,132.60	
Estimated profits on Federal prisoners for remaining six months of Jamieson's term	710.86	

Total saving under Jamieson.....\$12,018.45

The profit on feeding Federal prisoners has always been retained by the former sheriffs of Pierce County, but R. W. Jamieson has deposited the profit to the credit of the taxpayers of Pierce County.

James Longmire, head jailer under Robert Longmire, for the years 1911 and 1912, on January 10, 1913, printed the following statement in the Tacoma papers: "I want this statement quoted as coming direct from me: The Sheriff's office during the last two years has grafted \$11 700.00 from the County in feeding the County jail prisoners."

OF PIERCE COUNTY



C. A. Cook
COUNTY ASSESSOR

CANDIDATE FOR RE-ELECTION.

Resident of Pierce County for 37 Years.
All Interests Should Demand a Continuance of Present Policies!

THIS year is the first chance I have had to place Pierce County upon an improved tax valuation basis. Excessive levies by state, county, cities and municipalities, school districts and park and library boards, are largely responsible for the burden of taxation.

Assessors of Spokane and Pierce Compared:

Spokane Assessor's budget 1914.....	\$41,500.00
Pierce Assessor's budget 1914.....	25,500.00
Showing Pierce one-third less.....	\$16,000.00

Assessing properties valued at about \$200,000,000 is important work. Moderate assessment, rather than low levy, the correct policy.

Pierce County taxpayers have lost in the past eight years by improper policy of assessed valuations at least \$1,000,000 paid to the state alone. Local losses also very heavy.

Assessor is a "watch dog," creator of revenues. A novice might do much harm and destroy confidence in this office.

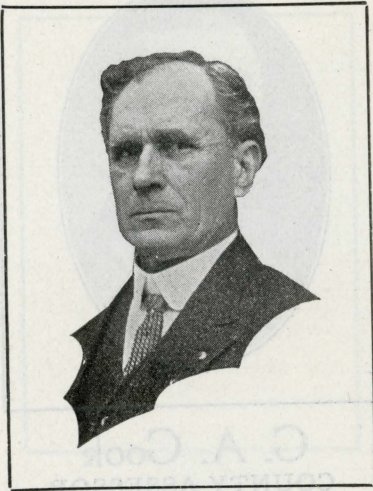
Reduced 1914 assessed valuations \$12,147,395; plan further reduction for 1915 and 1916; total saving to taxpayers about \$2,000,000.

Slight increase in timber, coal, banks, smelter, powder works, telegraph and railroad assessments. Valuations of Stone-Webster and telephone properties (1913-14) increased about \$2,400,000. These increased valuations have added about \$500,000 to the 1913-14 tax payment.

Not good faith or good policy to change official if work is satisfactory.

Can increase efficiency and better all tax conditions during next term.

THE PROGRESSIVE PARTY



L. L. Benbow

PROGRESSIVE CANDIDATE FOR
COUNTY SUPERINTENDENT
OF SCHOOLS

MR. BENBOW stands for the following:
Thorough work in the regular school branches. Introduction of industrial branches—Domestic Science, Manual Training, and Agriculture.

Close supervision of the construction of school buildings. They must be properly heated, lighted, and ventilated, and kept in best condition—the child's health is of the highest importance.

Playhouses and large playgrounds and apparatus.

Community center work.

County Institute—our teachers deserve the best.

Your children go to school but once.

They are entitled to the best training. They must have it **NOW** or never.

The best school is the cheapest.

Expenses must be kept at the minimum.

Vote for the best prepared and most active man.

You are selecting your child's instructor.

OF PIERCE COUNTY

J. H. Wylie

PROGRESSIVE CANDIDATE FOR
COUNTY TREASURER

Had charge of the books at one time for the Puyallup Cannery; expert bookkeeper; traveled for Rogers company and other concerns. Lives in the South End.

What it costs to collect
\$100 in taxes by various
County treasurers'
King County 59¢
Spokane County 72¢
Pierce County \$1.02

This is a picture of the Black Board used by Mr. Wylie on which he marks with chalk showing how much more expensive Kelly Carr makes his office than other County Treasurers.

MANY persons refused to vote at the recent Primary because they had to call for a party ballot, and many who did vote did so under protest. How should the Primary law be amended? Here are two proposals:

RIGHT WAY.

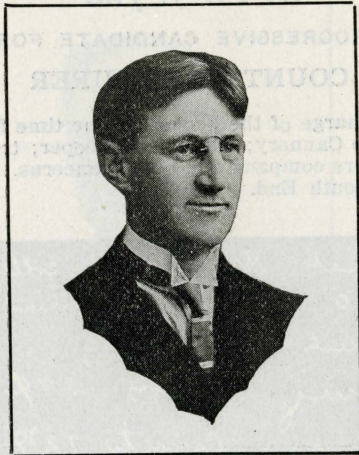
We demand the enactment of a "blanket primary law" that will allow a free choice of candidates by the voter as at the general election.—Progressive Platform.

The candidates (all Progressives) are pledged to support the Right Way. Vote for them:

State Senate—Governor Teats, 26th Dist.; W. P. Goffo, 29th Dist. State Representatives—A. M. Bryant, 36th Dist.; James P. Rawson, 35th Dist.; Ed. F. Masterson, 36th Dist.; W. J. Thompson, 36th Dist.; C. M. Knox, 37th Dist.; R. H. Lund, 37th Dist.; Fred A. Johnson, 38th Dist.; Jesse Thomas, 38th Dist.; A. M. Craig, 39th Dist.; J. Gillbo, 39th Dist.

WRONG WAY.

We further believe the Primary laws should be strengthened and supplemented by a provision that all voters who expect to participate in the party primary shall at the time of registering declare their party preference, and further providing that no voter shall participate in any party primary unless he has so declared his party, and then only in the primary of the party for which he has declared his preference. — Republican Platform.



Lorenzo Dow

CANDIDATE FOR
PROSECUTING ATTORNEY

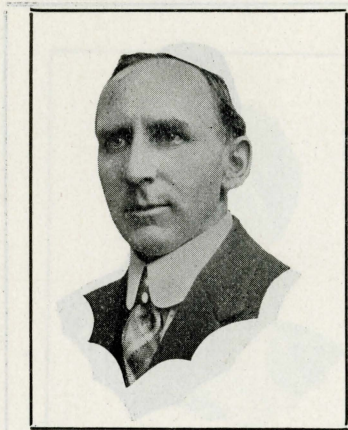
I HAVE served the people of Pierce County as Prosecuting Attorney for almost two years and am now a candidate for re-election. During my term I have labored diligently to see that every case is thoroughly investigated before trial to the end that justice shall be rendered with absolute impartiality. The office has been handled without fear, favor or hope of reward.

I made the promise two years ago that I would conduct the office with ability, economy and freedom from scandal. This promise has been kept in every detail, and if re-elected I can assure you of a continuance of this policy.

The first year of my incumbency I saved you \$3500.00 over the cost of my predecessor, this year \$6000.00 and next year the saving will be \$7000.00. Where the former administration employed five deputies—I am employing only three and doing a large share of the work myself in order to effect this saving for you at a time when taxes are already a burden.

If you want to continue this saving in the cost of this office, want the business handled efficiently and with ability and finally want the integrity of the office such that not even its enemies dare point the finger of dishonesty or scandal at it—give me your support by marking your ballot thus—

LORENZO DOW| X



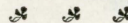
R. E. McFarland

CANDIDATE FOR RE-ELECTION FOR
COUNTY CLERK

THE business of the clerk's office has increased, while the expense has decreased. This was accomplished by the adoption of a more efficient filing system, duplicate system of receipts, installation of an up-to-date filing system and by adopting a new system of making up jury lists. The latter system saves time and money in both the clerk's and sheriff's offices. The new filing system saves 3/2c on every case filed.

With the new system increased efficiency has been possible with one clerk less than was required by Mr. McFarland's republican predecessor.

Part of the increased work in the clerk's office is due to the mothers' pension law. One hundred and eighteen mothers are now receiving assistance under the mother's pension law.



"The first words of the Constitution are 'We the people,' and they declare that the Constitution's purpose is 'to form a perfect Union and to promote the general welfare.' To do just that is the very heart of the progressive cause."
—Albert J. Beveridge.

THE PROGRESSIVE PARTY



J. L. Wadsworth
COUNTY AUDITOR
Candidate for Re-election.

1912—8 mos. receipts of office.....\$20,657.10
1914—8 mos. receipts of office..... 25,255.30

Increase '14 over '12.....\$ 4,598.20
1912—First 8 mos. expense.....\$22,576.51
1914—First 8 mos. expense..... 19,621.98

Saved in 1914 over 1912.....\$ 2,954.53

New system of recording now being installed by which a further saving of from \$2,000 to \$3,000 per year will be made.

Work has been systematized by which large savings have already been made and with proper management will continue to be made each year.

I pledge myself to continue along the same lines for the next two years.

Primary election supplies were purchased this year for 31 more precincts than two years ago and consisted of ballots for one additional political party, making one-fourth more ballots to be printed and at the same time a saving of over \$600 was made.

Saved \$700 in printing annual report.



"The Progressive motto is 'Pass prosperity around'."—Albert J. Beveridge.

OF PIERCE COUNTY



Miss Nelda Jaeger
PROGRESSIVE CANDIDATE FOR
JUSTICE of the PEACE

MISS NELDA JAEGER, Tacoma's prominent woman lawyer, is a candidate for Justice of the Peace. She was born, raised and educated in this city, later taking the degree of LL. B. at the University of Washington

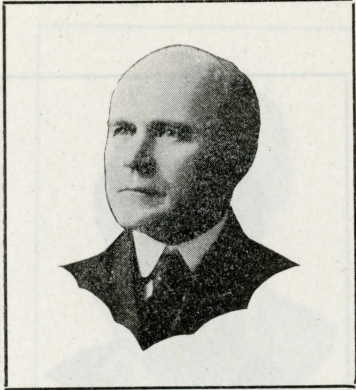
Miss Jaeger is active in Civic and Club work, and has held important offices in different clubs as well as the President's Council. The Tacoma Business Woman's Club unanimously endorsed her candidacy. She has had four years' active law practice, is admitted to practice before the State Courts, the United States District Court, and the United States Supreme Court.

We believe that our women are entitled to a representative in a judicial position, and Miss Jaeger is well qualified for the office.

P. B. Egbert

PROGRESSIVE CANDIDATE FOR
CONSTABLE

THE PROGRESSIVE PARTY

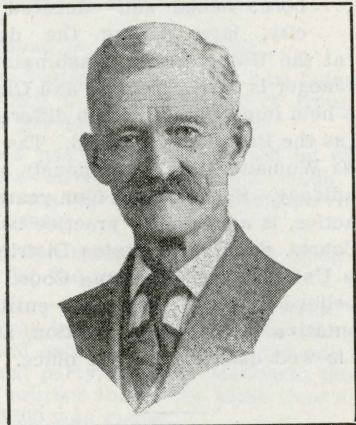


Frank A. Magill

PROGRESSIVE CANDIDATE FOR
JUSTICE of the PEACE

FRANK A. MAGILL is a candidate for re-election for Justice of the Peace. He has been Police Judge during the present term of office.

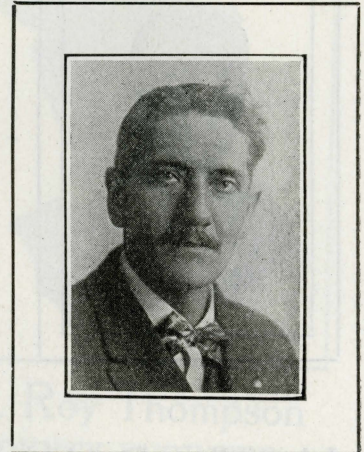
"I have tried to give a square deal, and to assist and encourage the unfortunate, and am working to secure conditions in business that will give to all an equal opportunity to enjoy their full share of the blessings of life, liberty and the pursuit of happiness."



A. T. Price

PROGRESSIVE CANDIDATE FOR
CONSTABLE

OF PIERCE COUNTY



G. J. Langford

PROGRESSIVE CANDIDATE FOR
COUNTY COMMISSIONER

3rd District.

THE commissioners spend your money. As a matter of business look up the record of the candidate before you. In the last legislature appropriations amounting to millions of dollars and necessitating high tax levies, were asked for.

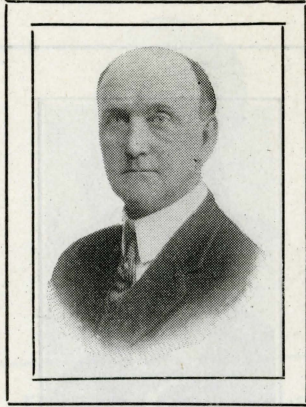
If you want economy look up my record in the 1913 legislative session.

Progressives in county offices have saved to Pierce County thousands of dollars.

Progressives in the last legislature saved to the state hundreds of thousands of dollars.

The producer is the real builder of a community. What we produce and sell over what we buy determines the balance in our favor. That balance is always used in new development.

If I am elected your money will be placed where it will aid the producer and home builder.



Dr. Llewellyn B. Ashton

COUNTY CORONER

CANDIDATE FOR RE-ELECTION

THE past two years within Pierce County have been marked by a great increase in the number of deaths due to violent and criminal means. In a county of the wide extent of this, especially wherein so large a proportion of its population is engaged in hazardous occupations, the duties of the Coroner become most exacting and important.

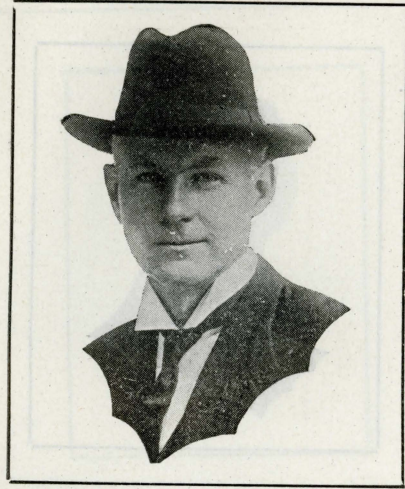
During this period Dr. Ashton has conducted the office in a highly efficient manner, according to the law, and satisfactory to all concerned.

This has been done at a cost of less than one-half the amount of County Funds appropriated to maintain the Coroner's office in former years.

On this record, and because of the experience already gained, Dr. Ashton can now assure the taxpayers that if re-elected to a second term the office will continue to be run with economy and efficiency. Why make a change?



"The special interests which suck the people's substance are bi-partisan. . . . They are the invisible government behind our visible government."—Albert J. Beveridge.



M. Roy Thompson

COUNTY ENGINEER

Progressive Candidate for Re-election.

A COMPARISON.

Showing additional work wisely placed under Thompson's efficient management by County Commissioners.

Construction work under former County Engineer during the years 1909 and 1910:

Road grading, wharves, bridges, etc., (approximately)\$140,000.00

Engineering expense, 21 per cent or 37,157.56

During the years 1911 and 1912:

Construction work under former County Engineer during the years 1911 and 1912:

One-half mile permanent pavement..\$ 7,191.63

Road grading, wharves, bridges, etc.. 157,245.00

Total\$164,436.63

Engineering expense 14%, or.....\$ 26,008.69

Construction under Thompson during years 1913 and 1914 to date:

33 miles permanent pavement.....\$436,774.69

Road grading, concrete wharf, steel and concrete bridges, gravel bunkers, river protection, Court House Annex, etc..... 224,376.00

Total\$661,150.69

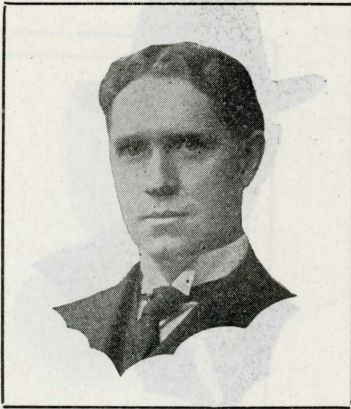
Engineering expense under Thompson, 7%, or\$54,507.56

This shows the per cent of Thompson's engineering expense to be 1-2 and 1-3 respectively of the percentage of his predecessors.

Thompson started Split Log Drag maintenance of earth roads in Pierce County.

Thompson constructed the Lakeview Gravel Bunker which have already made a profit to the County of \$6,699 in first four months run.

THE PROGRESSIVE PARTY



J. P. Leavitt

PROGRESSIVE CANDIDATE FOR
COUNTY COMMISSIONER
1st District.

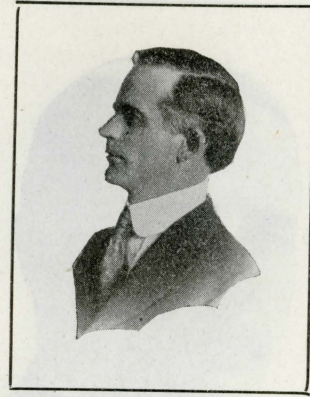
RESIDENT of Pierce County since 1906; was engaged in the mercantile business; for many years was a member of the grievance board of the Brotherhood of Locomotive Firemen. Lives in and is one of the largest taxpayers in Puyallup. Belongs to Mason, Knights of Pythias, Tacoma Commercial Club and Puyallup Commercial Club. Was Mayor of Puyallup in 1913, and declined to run again. Appointed commissioner to fill vacancy caused by death of Harry Martin.

Mr. Leavitt refuses to make any promises to any person to better his candidacy, preferring to enter the office untrammelled by promises to any individual except the promise made to all that he will perform the duties of commissioner without fear or favor and shall give a business administration, and all parts of Pierce County will get a square deal and one hundred cents worth of value for every dollar expended, so that a fair recompense for our taxes will be realized.



"What profiteth it the people if they do only the electing while the invisible government does the nominating?"—Albert J. Beveridge.

OF PIERCE COUNTY



C. L. Westcott

PROGRESSIVE CANDIDATE FOR
JUSTICE of the PEACE

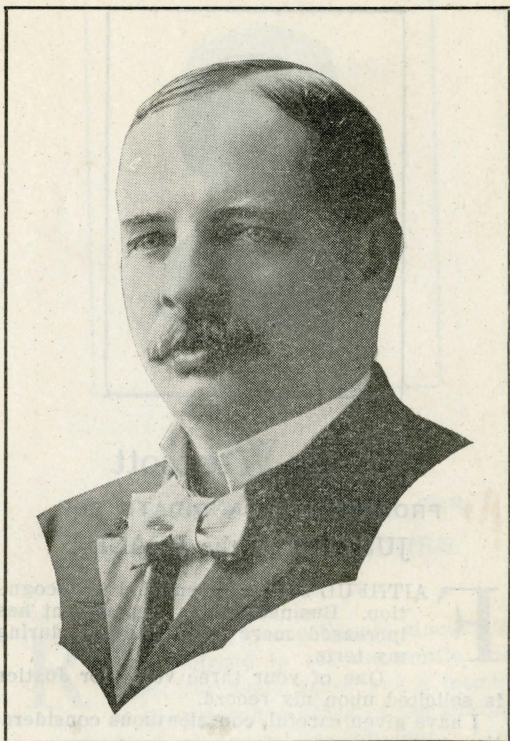
FAITHFUL service is entitled to recognition. Business in my department has increased more than two-fold during my term.
One of your three votes for Justice is solicited upon my record.
I have given careful, conscientious consideration to every case.



Edmund Morton

PROGRESSIVE CANDIDATE FOR
CONSTABLE

THE PROGRESSIVE PARTY



Stanton Warburton

PROGRESSIVE NOMINEE FOR
REPRESENTATIVE IN CONGRESS

WHEN Warburton was in Congress it was unnecessary for Grays Harbor at a cost of \$600.00 to send three men to Washington, D. C., to look after jetty appropriation, nor did Willapa Harbor have to have a man there to look after its harbor. When the present Congressman visited Washington three years ago and saw how Warburton was taking care of the district, Johnson wrote this tribute to his own paper: "The district would be making a mistake not to continue Warburton in office." Nor will the Tacoma Commercial Club have to spend \$450.00 for a lobbyist to look after its interests if Warburton is elected. Tacoma is the only city of 100,000 without Congressman or Senator. Here's your chance. A vote for the Democratic nominee is a vote for Johnson. Mark your ballot thus:

For Congress, Stanton Warburton..... X