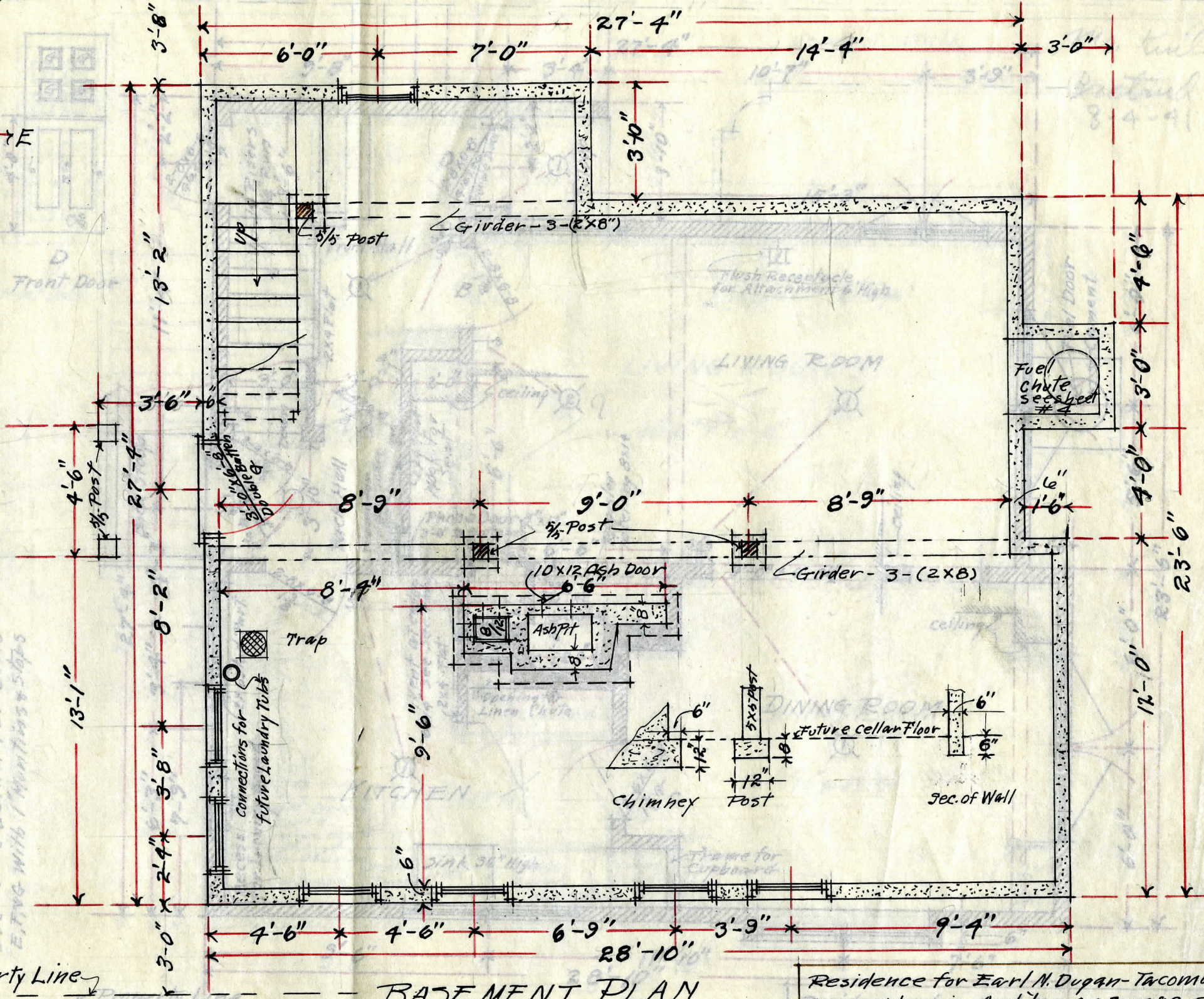


Property Line



Detail of Doors FD

Detail Front Door T.B.  
Use Same Detail for Doors  
E.T.V.C. with Mountings & Steps

Property Line

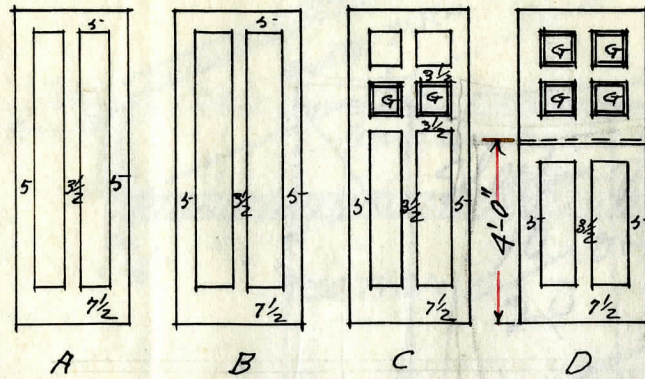
### BASEMENT PLAN

1/4" = 1'-0"

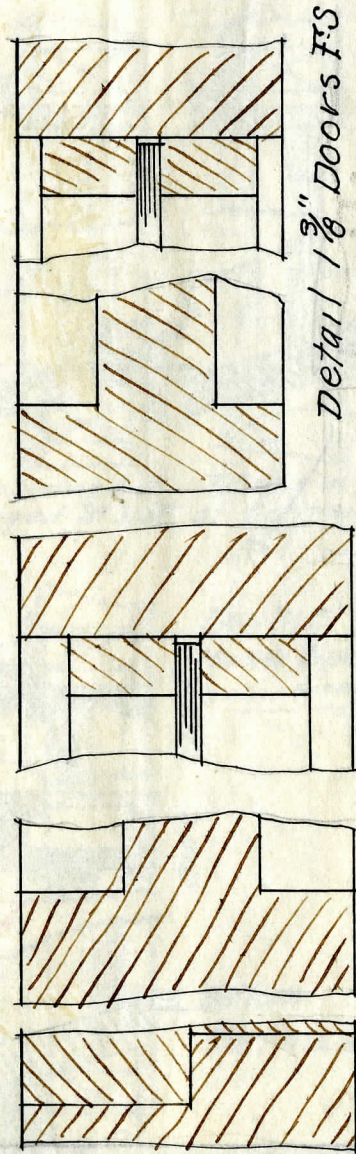
Residence for Earl N. Dugan - Tacoma  
Dugan & Lewis Archts - Gill Savage -  
Scotfield Bldg - 5/3 - 1910. E.T.V. (II)

19-D



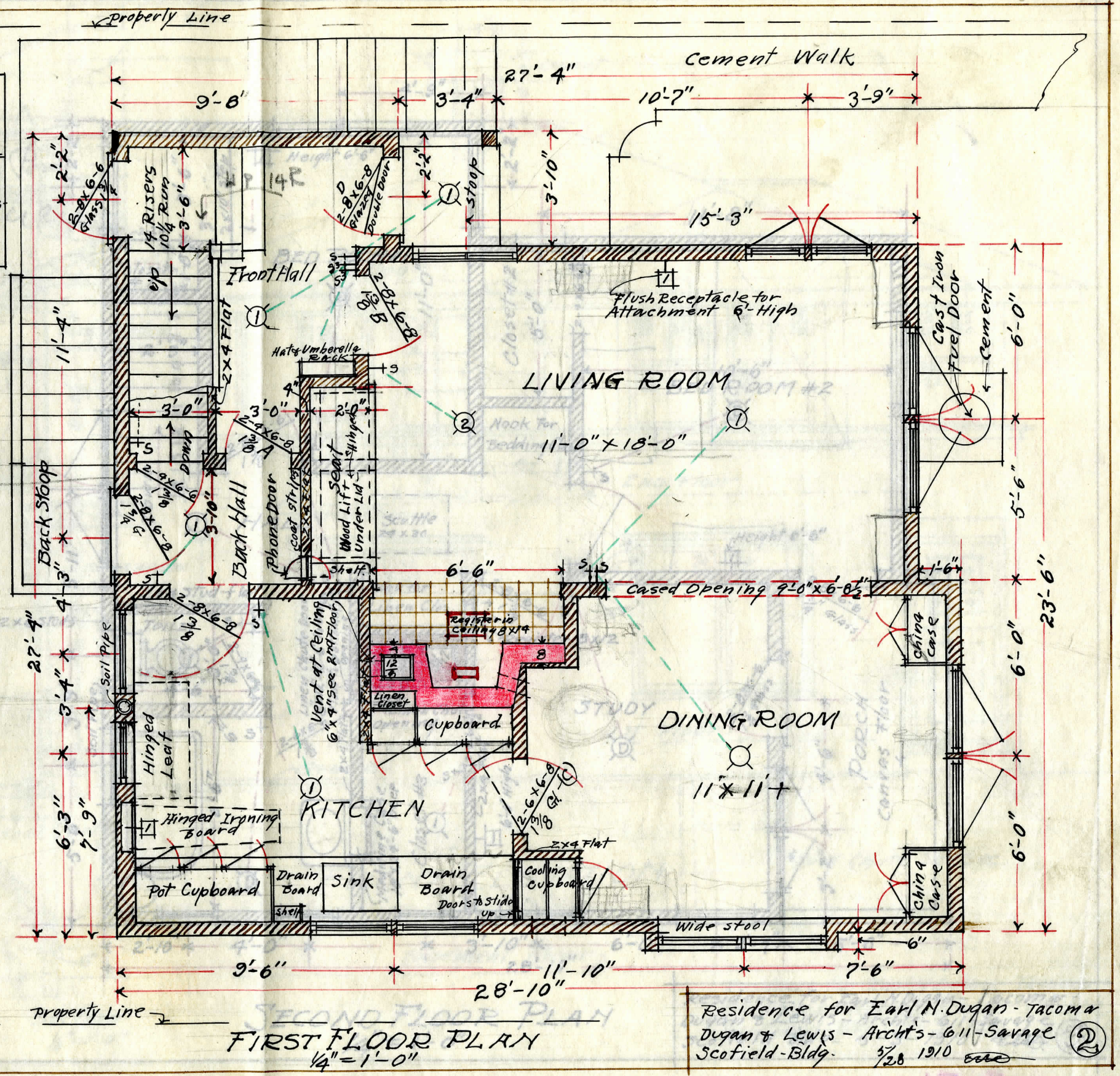


A B C D  
Front Door



Detail 1 3/8" Doors FS

Detail front Door F.S.  
Use Same Detail for Doors  
E.F. & G. with 1" Muntins & Stops



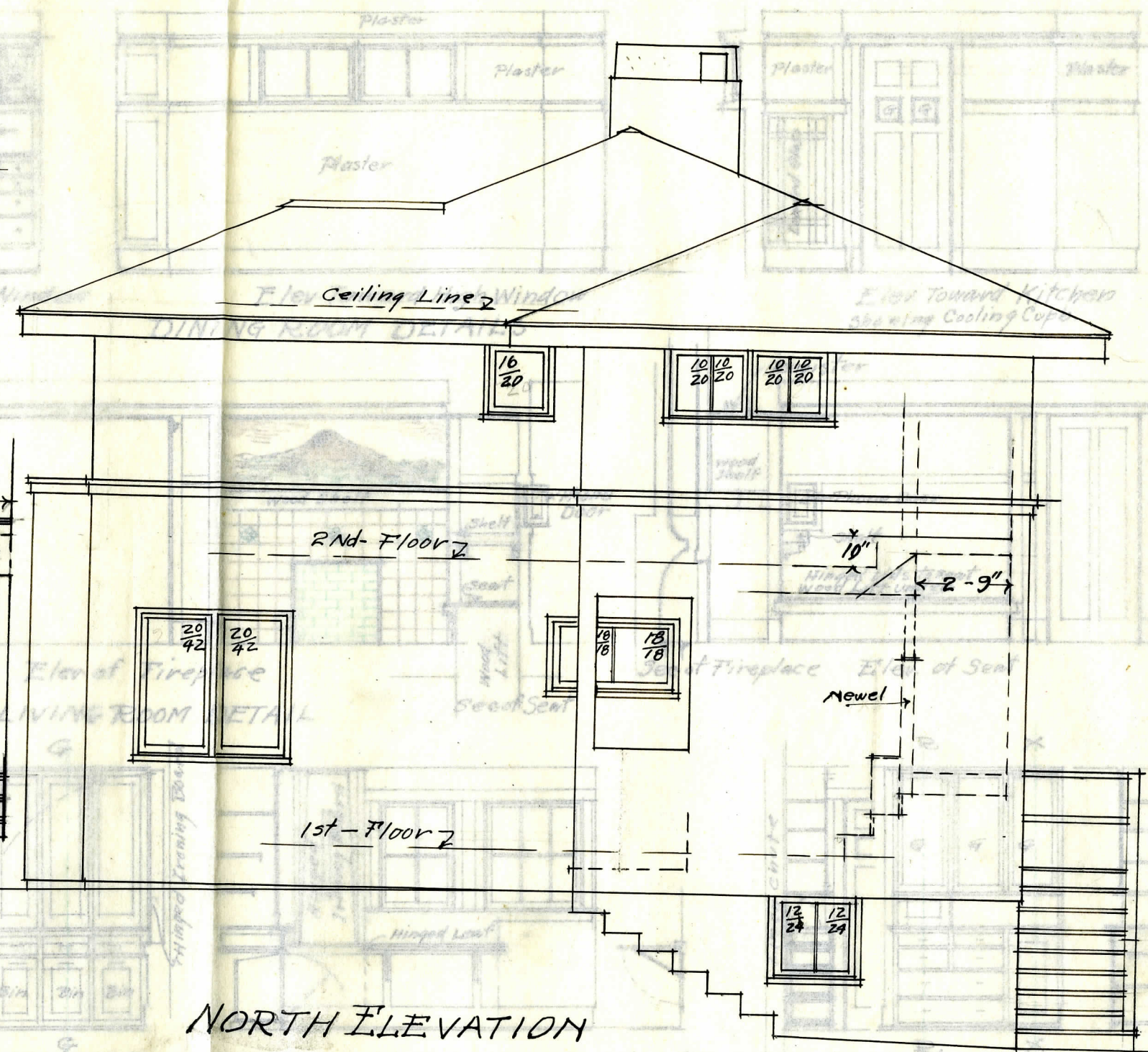
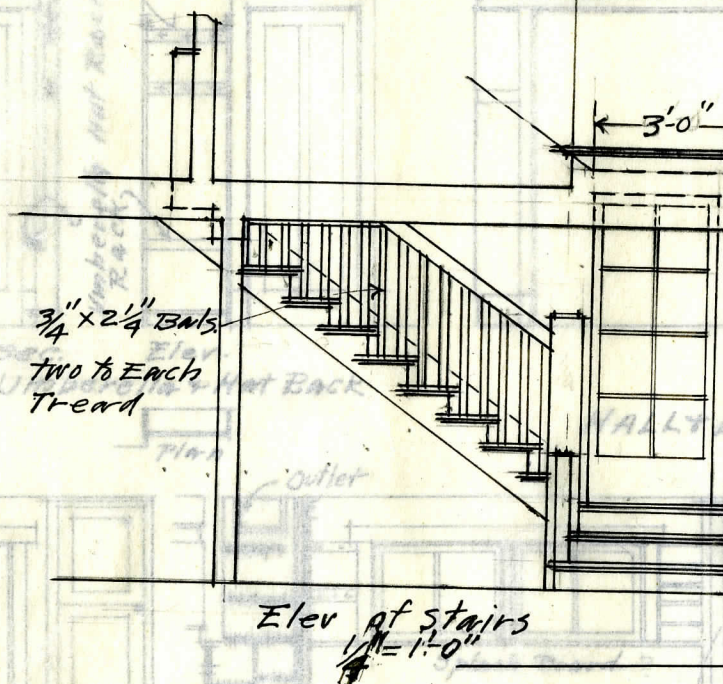
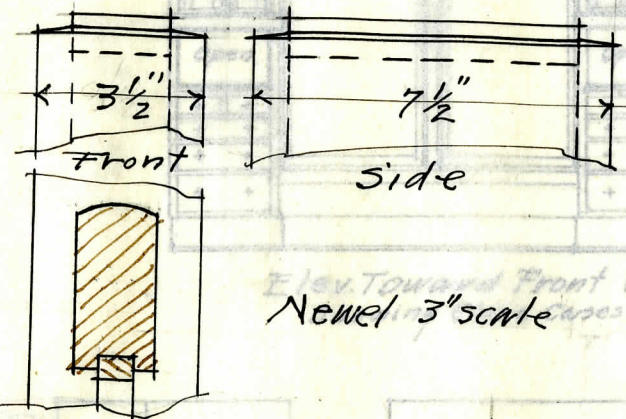
FIRST FLOOR PLAN  
1/4" = 1'-0"

Residence for Earl M. Dugan - Tacoma  
Dugan & Lewis - Archts - 611 - Savage  
Scotfield - Bldg. 3/28 1910

19 D





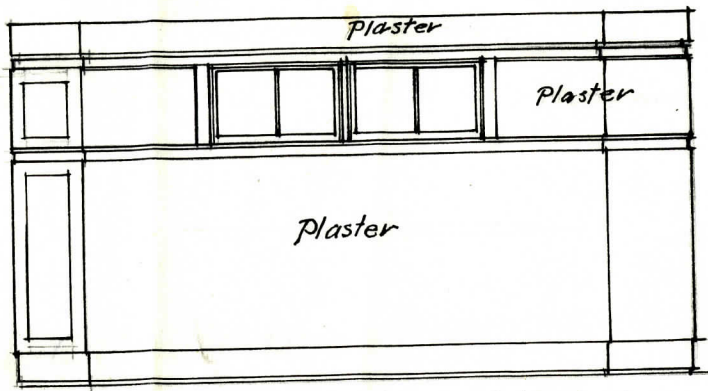


NORTH ELEVATION

Kitchen Details  
 1/4" = 1'-0"  
 Residence for Earl N. Dugan - Tacoma  
 Dugan & Lewis - Archts - 611 - Savage -  
 Scoble Bldg. 5/3-1910



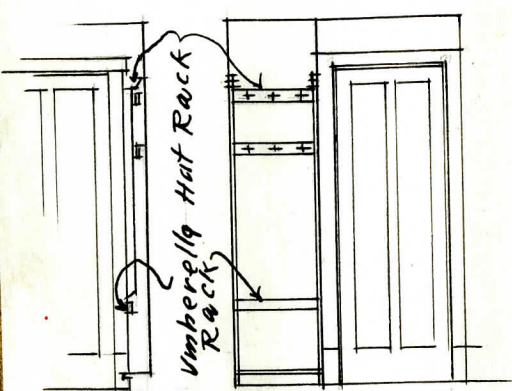
Elev. Toward Front Window  
Showing China Cases



Elev. Toward High Window  
DINING ROOM DETAILS



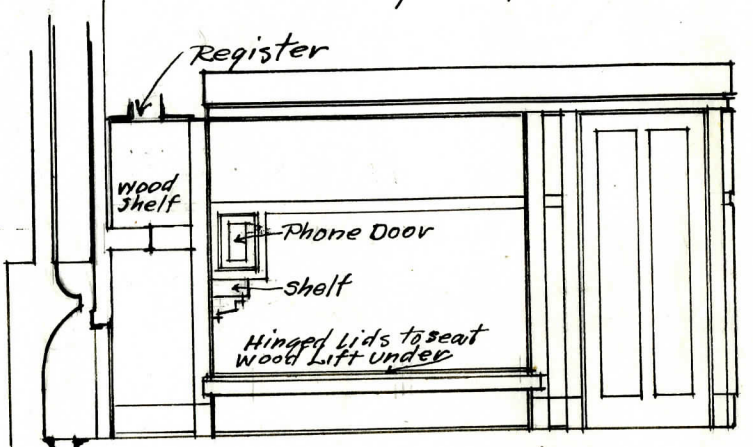
Elev. Toward Kitchen  
Showing Cooling Cupb.



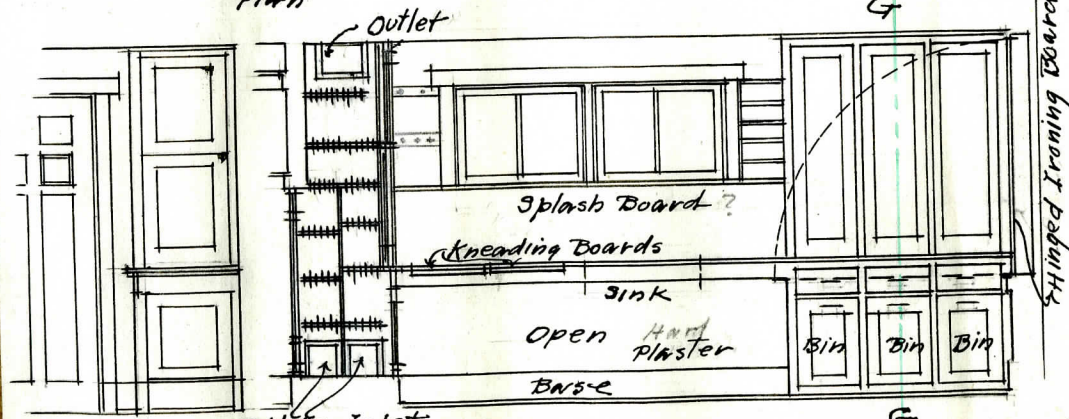
Sec. Elev.  
Umbrella + Hat Rack  
Plan



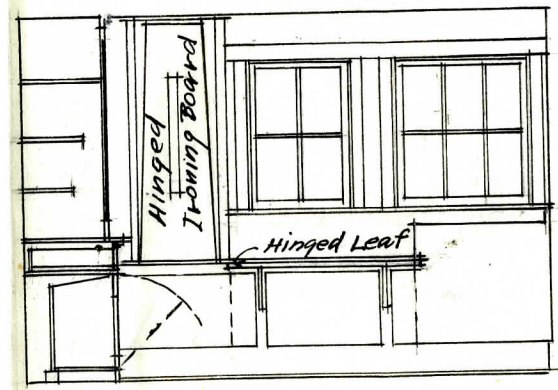
Elev. of Fireplace  
HALL & LIVING ROOM DETAIL



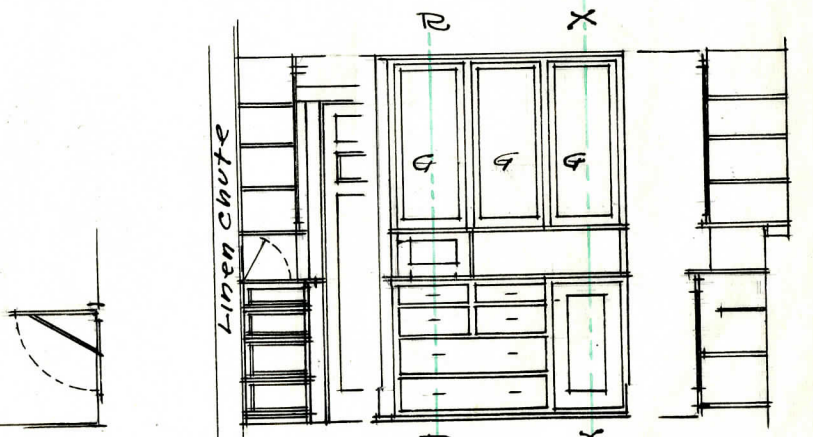
Sec. of Fireplace Elev. of Seat



Elev. Cooling Cupb. Sec. Cooling Cupb. Elev Sink & Cupb B.



Sec G-G



Sec of H. Leaf Sec R-R Kitchen Cupb - A Sec X-X

Kitchen Details  
1/4" = 1'-0"

Residence for Earl N. Dugan - Tacoma  
Dugan & Lewis Archts. 611 - Savage -  
Scottfield Bldg. - Tacoma - 5/27 '10