

Non-profit Org.
U.S. Postage Paid
Permit No.2
Vaughn, WA 98394

Box Holder

Volume 15 Issue 20
Circulation 7500



KEY CENTER LIBRARY

November 30
1987

Key Peninsula NEWS

Working together for the social and economic good of our Key Peninsula.

KP Angel Guild announces gifts for community projects

The Key Peninsula Angel Guild has announced a major gift of \$1000 to Community House in Home to provide funds for Christmas dinners and other Christmas food assistance for members of the local community.

The Angel Guild, whose members operate the Angel Guild Thrift Store in Key Center, collect and offer for sale various items of clothing and household goods at their Key Center Corral location. Over the years the Angel Guild has been a prime supporter and beneficiary of many different programs of community benefit, including programs at the Health Center, the Fire District 16 Ambulance Fund, special equipment for Fire District 16, the "Lifeline" (telephone equipment project for persons who may need immediate medical aid), the Peninsula High School Scholarship Fund, and many, many others.

In other gifts and pledges of community aid, the Angel Guild announced that a sum of \$1500 had been pledged to the Peninsula High School Scholarship Fund (to be awarded in June 1988); a gift of \$1000 to the construction fund for Educational Radio Station KGHP-FM; a gift of \$150 to Volunteer Park for a cover for the horseshoe pit at the Park; and a gift of \$300 to assist with the annual Christmas dinner for members of the community to be held at the Civic Center.

Members of the community wishing to help with the work of the Angel Guild may make donations of clothing and other items at the store during regular hours or may contact Guild president Nita Glass at 884-2431. The store will be closed over the holiday period from December 17 through January 6, 1988, and the store will not be in a position to receive clothing or other donations during that period.

Santa is on his way ... will travel throughout the Key Peninsula

Here we go again, the annual visit of Santa Claus to all the streets and by-ways of the Key Peninsula is just around the corner, thanks to the fine efforts of the Key Peninsula Fire Fighters.

Santa will be traveling in his fancy sleigh on local streets on seven different nights, covering a different area of the Peninsula each night.

Santa's schedule: (he starts at 6 pm)

- Dec. 12 Herron Island
- Dec. 14 North end, Lake Kathryn, Wauna, etc.
- Dec. 15 Key Center area
- Dec. 16 Home Area
- Dec. 17 Longbranch area
- Dec. 18 Northwest area (Station 5, Lake Holiday, etc.)
- Dec. 19 Northwest area (Lake of the Woods)

He will be handing out candy to children (children of all ages), and you can expect to see him in a caravan made up of a Fire District 16 vehicle in front and another Department vehicle following behind. To make sure you see Santa in your neighborhood, check his schedule (which appears here and elsewhere in the paper), and then keep your eyes and ears open for the sirens and the vehicle lights that will tell of his progress.

This will be the eighth year that the Firefighters have "helped" Santa make his Key Peninsula rounds. At first he started out on the back end of a 3/4-ton truck, and since then has graduated to a much fancier sleigh, complete with a blaze of lights powered by a special portable generator. The word around town is that Santa will also be appearing in a fine new set of clothes this year, courtesy of Margo Fleming. Santa's clothes from previous years were said to be suffering from all those trips out in the rain, snow, ice and heavy fog. Al Taylor of the Firefighters is in charge of the event, but Al (as usual) was quick to mention that this is an "all-department" effort, and involves the Firefighters from each of the District stations. He also mentioned that Santa's tour provides an opportunity for Department members to get out and meet the public and to share a holiday greeting with all residents, regardless of age.

The Key Peninsula Business Association has also taken a very active part in Santa's tour this year, having provided the promotional expenses of publicizing the event, and supplying one-half of the funds for the candy. The KPBA also made the arrangements to handle the gift of 2000 "mini canes" that have been donated by the Brown & Haley Candy Company in Tacoma.

This is a fun annual event brought to you by your Firefighters Association. Be sure to turn out and greet Santa when he shows up in your neighborhood!



Pat Blundell of the Country Mouse Store, and John Schmidt of Walt's Shop 'N Save, both at Lake Kathryn Village Mall, show off Santa's sleigh which will be used to collect food for Christmas distribution at Community House in Home. All Lake Kathryn stores will have cash collection boxes also. Please see related story on Page 23. KP NEWS photo by Lee Stiles.

KEY PENINSULA NEWS

PO Box 3, Vaughn, WA 98394
884-4699

Published twice monthly by
Key Peninsula Civic Center Assn.

Editors: Keith Stiles 884-3379
Pauline Finn 884-3597

**Business and
Production Mgr.** Lee Stiles 884-3379

Ad Sales: Linda and Dan Orme 884-4699

Production Staff:
Marian Wagner, Sally Cornman, Renie Bash, Linnea Lawson, Virginia Worth, Denise Backlund, Allyne Woolery, Hugh McMillan, Janne Dakeshler.
Contributors:
Daphne Daus, Dory Meyers, Paul Cyr, Dr. Wm. Roes, Tim Kezle, Lotta Dust, Stella Retherford, Elaine Forch, Janice McMillan, Hugh McMillan, Avon Gay, Mary Ann Huntington, Cecil Paul, Margaret Paul, Marie Brown, CGA, Jean Humphreys.

The opinions expressed are the opinions of the writers, and do not necessarily reflect the views of the publishers or the staff.

Published by the people of the Key Peninsula for the people of the Key Peninsula. All proceeds go to the benefit of the people of the Key Peninsula and the programs of the Civic Center Association.

School Board to hear report on AIDS

The Peninsula School Board will be meeting tomorrow night (Tuesday, December 1) at Kopachuck Middle School, to hear a special informal report on the AIDS disease. The presentation, to be made by teacher Jeff Morse who has recently received national recognition for his material on this subject, is part of the information-gathering process of the Peninsula School Board as it prepares to discuss the possible adoption of a district-wide policy on AIDS.

Another topic for the evening will be the 1989 school M&O Levy, which is expected to be placed before the voters during the late winter-spring period in 1988.

The meeting at Kopachuck on December 1 will begin at 7:30 pm, and is one of a series of meetings held by the School Board at various schools within the district for the convenience of parents who may wish to attend. The Kopachuck Middle School is located at 10410 56th St. N., in Gig Harbor.

Letters from you ...

Open letter to all Key Peninsula clubs and organizations...

In an effort to increase community participation in the Key Peninsula Advisory Committee, we would like to inform your organization of our meeting times and dates. If you will call Cliff Nelson at 884-2182, and leave your number, then we can be more effective in serving. Please plan to attend the meetings, the future of the Key Peninsula depends upon it.

The Advisory Committee is also in the process of reorganizing. If you would like an opportunity to serve your community on this Board, and feel you can uphold the pledge below, please call - Cliff Nelson/884-2182 - and your name will be submitted.

Pledge of office:

As a member of the Key Peninsula Advisory Committee, I promise to act in the best interests of the whole community, to strive to get a majority opinion about all matters concerning the committee and faithfully report these to the County Council.

I promise to attend meetings faithfully, and fully understand that the Key Peninsula Advisory Committee may, at any time, by a simple majority vote, remove me from the committee for failure to comply and may appoint my chair to another individual in the community. (Pledge to be signed and witnessed by two persons.)

Cliff Nelson.

To the Editor:

I always look forward to the KP News. Non-partisan reporting is a sticky wicket indeed, especially in a small, brashly-growing community such as ours. Even though I live on Herron Island, I am still concerned about land use, water availability and all the other issues which affect us all sooner or later.

Certainly I don't want another Tacoma Sixth Avenue marching down Key Peninsula Highway, but is it fair (as I would prefer) to limit development to the areas of Minter, Key Center, Home and Lakebay? And enough already of shopping centers - we've a plethora of those on the Gig Harbor Peninsula. What a dilemma!

Housing and housing developments - well, can you blame anyone for wanting their little piece of heaven out here? Another dilemma.

Better to be over zealous and hang tough now on zoning regulations than try to correct a bad situation down the line.

I don't envy those making all these knotty decisions. They'll be damned if they do and damned if they don't. But at least they waded into the fray and tried to determine the best solutions for us all.

And our Fire Department, Lions Club, KP Civic Center, Food Bank and all the other do-gooders in our community - ain't they sumpin' else?

Thank you for keeping us so well informed.

Virginia Whitten, Herron Island.

To the Editor:

The heart of the holiday season is the important traditions carried on year after year. Something that has become a tradition for us is a special dinner that takes place on Christmas Day. Senior citizens who would otherwise be sitting at home alone receive invitations to a full "turkey 'n trimmings" meal served by enthusiastic volunteers. It's a first-rate party with entertainment and gifts for everyone. We started doing this in 1979. Last year we fed 90 guests, plus staff. Now, we're trying to organize for a group of similar size for this year.

If you know a senior who might be sitting alone on Christmas Day, call Eleanor Stock at 884-3739 so that we can extend an invitation to that person.

In the past, we never solicited for help on a grand scale, but finances could prove to be the downfall of a good tradition and we don't want this to happen. If you feel you can send a small monetary donation, please call Vicki Henschel at 884-3642, she handles the financial end of our party.

If anyone has questions, please call us at 851-4556. Thank you, and warmest holiday wishes to you.

Mike and Joyce Salatino

KP Horsemen's Assn. says "thank you"

The Horsemen's Association thanks the community for its support in helping make the Halloween Party at the Civic Center a success, with a special thank you to those who donated canned goods. We are grateful, also, to the Civic Center for use of the gym, for a \$500 donation, and 2 skating passes for prizes. And ... to the planners, to Fredda for letting Frank have his Halloween fun, and to the boys who built the haunted house ... a million thanks.

Stephanic, Sec. Treas., KPHA.

Community tree lighting at Key Center

by Mary Ann Huntington

The Key Peninsula Business Association will hold a tree lighting ceremony December 6, 4 pm, at the Key Center Corral in uptown Key Center. The 25-foot Douglas fir was donated by Russell Schillinger of Bayview Farms in Victor. The community is invited to sing Christmas carols with the Peninsula High School mixed choir. Santa Claus will arrive on a fire truck to hand out treats at 4:30 pm. Don and Cherie Mastro are in charge of securing the community Christmas Tree, Claudia Loy is in charge of the lighting program, and she and Pat Blundell of the Country Mouse have been busy making decorations. The tree will be up and lighted throughout the Holiday Season. Bring the whole family to this first ever event sponsored by members of KPBA.

Local woman's daughter survives plane crash

Sherlie Marrietta, operator of the Key Center Washington State Liquor Store, is finding much to be thankful for this holiday season. Her daughter, Libby Smoot, 36, of Ketchum, Idaho, was a passenger on Continental Airlines flight number 1715 two weeks ago (November 8) when it crashed on takeoff at Denver's Stapleton Airport.

Ms. Smoot, who was seated in the extreme rear of the aircraft "against the rear bulkhead" was one of the few passengers to survive relatively uninjured, when the plane first gained some altitude and then flipped and cartwheeled down the snowy Stapleton Airport runway. In remembering the crash, she said that the tail section in which she was seated broke completely off from the rest of the plane, and that it came to rest upside down. Finding herself relatively unharmed but hanging down in her seat, she unbuckled her safety belt and fell some distance to the ground below. She lost her shoes and some of her clothing in the event, but was rescued from the cold and wet runway by a snowplow operator who "shoved her into a set of his overalls."

Ms. Smoot, who is Advertising Manager for "Idaho" magazine, has two girls in her family, and was on her way to Boise from a business meeting in El Paso, Texas. Her brother, Sherman Smoot, is a Captain and flies aircraft for Continental Airlines. Approximately 28 persons died in the crash of the plane, and another 55 were injured. Sherlie Marrietta said that Continental had been most considerate and helpful to the passengers and their families, but that her daughter now mentions travel by horse and snowshoe.

Cootiette 609 plans Christmas Party

December brings plans for the annual Cootiette 609 Christmas party, to be held on the 17th with a potluck dinner and gift exchange.

Lenore Jameson has knitted slipper socks and Florence Vetro has knitted stocking caps for all residents at Rocky Bay Health Facility. Lenore has also knitted slipper socks for all patients at Cottesmore Nursing Home. There will be a work party for wrapping the gifts at Thelma Caddles and the gifts will be delivered to Cottesmore on December 18 at 2:30 pm and to Rocky Bay at 7:30 pm on the 18th.

Christmas gifts of candy canes and pens will be given to the patients at the Navy Hospital on December 15, and pumpkin pie will be served to patients at the Retsil Veterans Home at their December 15 Christmas party.

Your Park Board reports

by Daphne Daus

The Key Peninsula Park and Recreation Board held a special meeting Nov. 23 at the Civic Center to discuss the proposed 1988 fee schedule, budget and officer nominations.



A committee was established several months ago to review current rents and make a recommendation to the Board for the 1988 rental fee schedule. The recommendation was discussed in length with the suggestion the Board return the proposal to the committee for further study. The committee members are Vicki Henschel, Dale Loy, Kay Harvey, Daphne Daus, and Mike Kent. Further recommendations will be made in the areas of liquor fee, damage deposit, Reno nights and the current contract with the preschool. A special thank-you is expressed to members of the user groups who attended the meeting and provided valuable input and suggestions. The fee schedule will be submitted again at the December 9 Board meeting.

The 1988 proposed budget was adopted after a brief description of the sources of revenue and anticipated expenses. The budget approved is in the amount of \$37,000.

Nominations for officers for 1988 were also held. The following individuals have been nominated: Avon Gay, Secretary; Max Marlow, Treasurer; Mike Kent, Vice Chairman, and Daphne Daus, Chairman. Elections will be held at the next regularly scheduled meeting.

The Board then adjourned into executive session to discuss possible employee matters. No action was taken.

Avon Gay and Max Marlow are welcomed aboard; we look forward to the opportunity of serving with you.

All community members are encouraged to attend the next Board meeting scheduled for 7:30 pm, December 9 at the Civic Center.

Vaughn Garden Club Christmas gettogether

Vaughn Garden Club will enjoy its Christmas noon potluck dinner and gift exchange on December 16 at the home of Ole Warmbo. Ole will be assisted by Beulah Kupka.

KP Senior Society Pre-Thanksgiving Dinner huge success

Two-hundred-and-thirty guests were served at the annual KP Senior Society pre-Thanksgiving dinner on Thursday, November 19. Program chairperson Zoe Sanders greeted guests at the door, and the gym was beautifully decorated with flower-filled pumpkin table centers by Sally Kruger and her committee. An outstanding arrangement of antiques (loaned by Lou's Country Collectibles) surrounded by flowers formed the stage decoration.

President Bob Smith presided over the door prize drawings donated by the following merchants:

The Ice Cream Shoppe; The Great American Pizza Factory; Macon Bacon; Key Center Shell; Daugherty Chevron of Home; Jessica's Apparel; Longbranch Mercantile; Huckleberry Inn; Lakebay Lumber; Sylvia's Styling Salon; The Eatery; Mary Ann's Kountry Kiln; Movie Magic Studio; Connie Niche; John Olsson, DDS; Key Center Chiropractic; China Palace; Red Dogs; Trixie's Home Feed & Grocery; Sunnycrest Nursery; Postmaster, Vaughn; Tacoma Telco Credit Union; Puget Sound National Bank.

Special recognition should go to Cathy Schaefer and her kitchen crew. Also, to the Civic Center Association and Walt's Fine Foods.

Burglary reported

The Pierce County Sheriff's Department reported a burglary at DJ's Tires at 13712 SR 302 (KPN) on November 21. Four wheels were reportedly missing from the property. No suspects were known at the time of the report.

KP Civic Center Association Board potluck

The December Board meeting of the KPCCA, scheduled for December 10, will be a Christmas potluck for old and new (1987 and 1988) Board members and their families. The evening will start at 6:30 and be followed by a short business meeting.

Peninsula movings and shakings

Tuesday, December 1 ...

Cookettes 609 visit Cotnamore Nursing Home
KP Athletic Association Board meets at 7:30 pm at the Civic Center
TOPS weigh-in at 6:15 pm; meeting at 7:00, Gold Room, Civic Center.

Wednesday, December 2 ...

Community Services Center at Home serves hot lunch to seniors, all are welcome.
Lions Club meets at the Huckleberry Inn at 7 pm.

Thursday, December 3 ...

Dr. Penrose Orthopedic Guild will hold its annual Christmas Auction and Luncheon at Faraway Lodge, Longbranch, starting at 11 am.
KP Senior Society potluck lunch, Gold Room, Civic Center.
Razzamatazz Spaghetti Fundraiser, Peninsula High School, 4:30-7:30 pm.

Friday, December 4 ...

KP Business Association meets at the Eatery, KC Corral at 7:30 am.
Upper Sound Grange 705 Christmas potluck, 7 pm, Civic Center.

Sunday, December 6 ...

Community Tree Lighting, KC Corral, Key Center, 4 pm.

Monday, December 7 ...

Senior Society Board Meeting, 10 am, Civic Center.

Tuesday, December 8 ...

Altrusa Club meets at Shoreline Restaurant at noon.
Peninsula Emblem Club will meet at Peninsula Elks Lodge, 7:30 pm.
TOPS - weigh-in at 6:30 pm; meeting at 7:00, Civic Center.
Vaughn PTO meets at the school at 7 pm.

Wednesday, December 9 ...

KP Civic Center Assn. Executive Meeting, 7:30 pm, Civic Center.
Hot lunch for all seniors at Community Center, Home.
Peninsula Neighbors Craft Club meets at 11 am at Longbranch Church Hall for a potluck and gift exchange.

Thursday, December 10 ...

Friends of the Library will have a Christmas party and program of harpsichord, flute, cello and poetry at 7 pm, Key Center Library.
KP Park Board will meet at the Civic Center at 7:30 pm.
KP Senior Society potluck lunch - Civic Center, Vaughn.
KP Civic Center Assn. old and new Board members and their families will meet for a Christmas potluck at 6:30 pm, and follow with a short business meeting.

Friday, December 11 ...

Ruth Circle members and their families will gather at 5 pm for a family potluck and gift exchange - Longbranch Church Hall.
Tacoma Performing Dance Company will present The Nutcracker at Peninsula High School Auditorium at 2 pm and 7 pm. Adults \$2.00, children \$1.00.

Saturday, December 12 ...

KP Advisory Committee will meet at Minter Elementary School, 7:30-9:00 pm.
VFW and Auxiliary holds its annual Christmas Party. Social hour starts at 6:30 pm, potluck dinner at 7:30.

Sunday, December 13 ...

Evergreen Elementary will hold its annual Winterfest at Vaughn School during the evening.

Coming events

Thursday, December 31 ...

New Year's Eve Dance at the Civic Center - BYOB - 9 pm to 1 am - tickets available at Sunnycrest Nursery - \$35 a couple.

Your ad in the KP NEWS reaches EVERYONE!

RED DOGS

Bakery, Deli and Grocery

"Open 5am-12 midnight"

VCR
RENTAL

2 for 1
Tues.-Wed.-Thurs.

NO ID REQUIRED

Key Center

Key Center
884-4602

884-4602



400 MOVIES
NO MEMBERSHIP



Happy Holidays

to all of you
from

Jessica's Apparel &

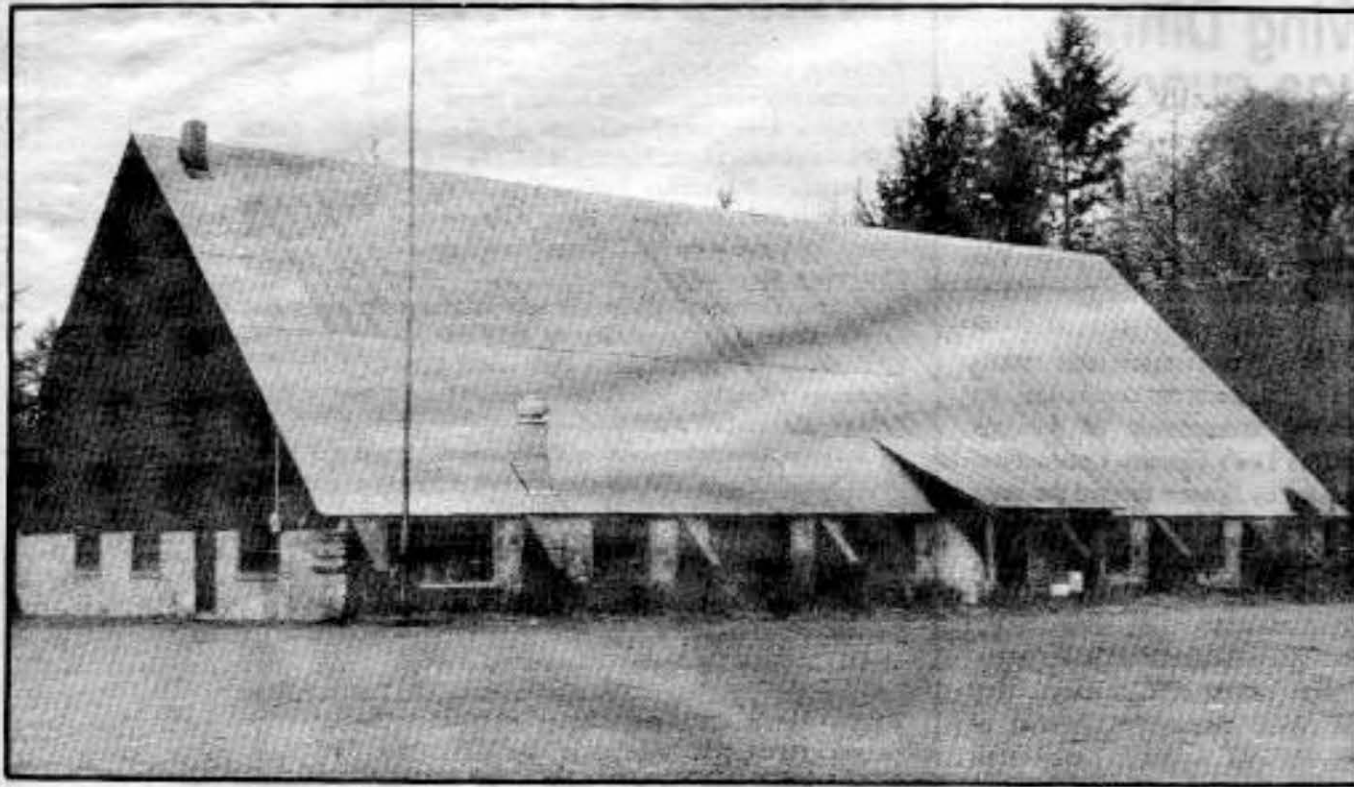
Home Laundromat

7 days a wk.

8:00 - 7:30



Longbranch - Peninsula South



Longbranch has a "new" historic building

by John McMenamin

Members of the Longbranch Improvement Club learned recently that their clubhouse on Key Peninsula Highway is now on the Register of National Historic Places kept by the National Park Service. Nomination to the National Register was made early in the year by the Washington State Advisory Council on Historic Preservation on the recommendation of the Pierce County Department of Planning and Development.

The building was constructed in 1939 by the WPA to serve as a gymnasium for the local school. This was one of five school structures built on the Gig Harbor and Key Peninsulas by the WPA during 1934-1939 in anticipation of the increased population expected to follow the completion of the first Narrows Bridge in 1940. According to Caroline Gallacci, Preservation Planner for the County, the building is architecturally unique in design. Features making it one-of-a-kind are its large scale rustic architecture and the use of stone walls, log rafters, and concrete buttresses in its construction. Architectural integrity is one of the re-

quirements for inclusion in the Register of Historic Places. Except for the addition of the metal roofing over the original shake roof, the exterior structure has been little modified through the years.

Washington has a Multiple Properties Document for inventorying and evaluating many properties under a single theme. This makes the evaluation of structures more efficient by assuring that standards are equally applied; furthermore it avoids duplication. In September of 1986 our county completed an inventory under the theme of rural and suburban public school buildings and placed 24 school properties in the Pierce County Register of Historic Places. In addition to the Longbranch gym, buildings from Vaughn and Glen-cove schools are on that list. The National Park Service chose Washington as one of five states to nominate thematic groups of places for inclusion in the National Register. Because Pierce County had completed the study of school properties of historic significance and had a register available, ours was the first county to present a group of properties to the state

for nomination the National Registry of Historic Places. Of the twenty-four school properties on the County Register, nine were selected as meeting the national standards and were submitted to and approved by the State Advisory Council.

In the early years rural schools served as community social and cultural centers. In the 1940s local schools were phased out. Larger regional schools with bussing networks were viewed as a way to improve the education of students. In addition to the Longbranch gymnasium, two other early school structures still exist on the south end of the peninsula and continue to serve as community centers. The Vaughn High School gymnasium, built by the WPA in 1938, and associated classrooms are now the Civic Center. The Lakebay school building, which was extensively altered as a private residence in the early 1980s, is now the Community Services Center. It is fitting that the tradition of extra-educational service to local communities has survived educational reforms.

Community House news

Members of the community were taken by surprise about two weeks ago when Sharon Billups, who has been serving as Director of Community House, announced that she was resigning that position effective December 8, 1987. No successor has yet been named, but the position is currently being advertised, including information appearing in the classified section of this edition of the NEWS. Ms. Billups has not announced her plans for the future, but in the past she has been active in the field of income tax preparation.

In other news of Community House, the organization has recently received the very welcome news that the Key Peninsula Angel Guild will provide a gift of \$1000 to go toward the purchase of food and other items to make up Christmas baskets for those in need in our area. Registration for those needing Christmas baskets will begin on December 1.

Community House has also received a Community Development Block Grant in the amount of \$12,000 which will be used to build a new handicapped entrance to the building (from the newly-paved parking lot), make certain bathroom improvements, and rebuild a room at the rear of the building into more usable office and work space.

Ms. Billups announces there was very gratifying response to her appeal for assistance with food for the needy at Thanksgiving time, and that it was possible to distribute a Thanksgiving food basket to every family requesting one. She particularly cited the contributions of students from the Key Peninsula Middle School and from Evergreen Elementary School. Approximately 1500 cans of food were donated to the project, along with a substantial amount of cash which was available to purchase other food. She also stated that the next Board meeting for Community House would be December 8, and that the "Volunteer of the Month" for December was Arlene Hale. Volunteers from Community house netted about \$147 by operating the kitchen at the Civic Center during the Tool Auction, held on November 14.



Millers Feed
Ask For
Ton Prices

FEED STORE

Key Center

Quality Feed

And a whole lot more

Mon.-Fri.
9:00-5:30
Sat. 10-5
884-3447

Miller
Feed
16%
Egg
Layer
\$9.25

Winners
Circle
12%
Horse Feed
80#
\$8.95

Miller
Wheat
Bran
80# sack
\$6.60

Offer good Nov. 30 to Dec. 14

KEY PENINSULA

INSURANCE
AUTO • HOME • BOAT
LIFE • HEALTH • DISABILITY

EXPERIENCED IN
SENIOR HEALTH CARE
INSURANCE
• MEDICARE SUPPLEMENTS
• NURSING HOME

Phone Quotes Welcome
884-9100

(Located in Key Center)
8912 Key Peninsula Hwy KPN
Lakebay

Razzamatazz Spaghetti dinner benefit

The Razz Group of Peninsula High School has been chosen to represent the State of Washington at national competition.

To kick off fundraising, Razz students and parents will be having a spaghetti dinner at PHS on Thursday, December 3, from 4:30 - 7:30 pm. Dinner tickets for adults will be \$5; Seniors and students under 12 - \$3.50, children 5 and under - free. Come and support our students!

5110 LACKEY RD KPN

FROM YOUR CHIROPRACTOR

VAUGHN

**Dr. Robert B. Campbell D.C.
CHIROPRACTIC SPINAL CARE**



884-2144

**X-RAY FACILITIES ON LOCATION
WE STILL MAKE HOUSECALLS**

Why come to our office if you have a chiropractic problem? **LOOK** at what we have to offer at our office then decide.

THINK SAFE

1. Chiropractic First
2. Addicting Drugs and Narcotics second
3. Potentially dangerous Surgery last

Specializing in Auto and Work Related Injuries

Service! We are open seven days a week, 8am to 8pm, 24 hour emergency service. We still make housecalls!

Affordability! Chiro Credit! Instant \$1,000 credit, no interest and up to five years to repay. Call for details.

Facilities! X-ray facilities on location, no travel, no waiting.

Efficiency! Friendly courteous staff, we will explain and fill out all your paperwork for you.

Results! **WELL LET'S**

**J
U
S
T**

ASK YOUR NEIGHBOR !

**OPEN
7 DAYS
A WEEK**

**WE'RE
ALWAYS
HERE
BECAUSE
WE CARE**

"When I came to see Doctor Campbell, I wasn't in any pain but had a curvature of the spine (scoliosis) to the point where my head was resting on my shoulders!!! Now, in just seven weeks, my spine is almost perfect... no drugs, no surgery, no therapy, just chiropractic treatments. If you have scoliosis or would like to see if you have, see Doctor Campbell for an examination. It's the most important exam you will take all year."

JORDAN KINCAID
Gig Harbor High School Student



Can Chiropractic Help You?

If you have a health problem, we invite you to make an appointment for a free spinal examination. These screening tests are performed as a public service, at no cost to you, to determine whether your health problem is likely to respond to chiropractic care.

These screening tests require approximately 15-30 minutes and are simple and painless. The doctor will discuss the results of the examination with you and advise you whether or not additional chiropractic services may be of benefit to you.

There's no charge for the screening test; however, if additional services are indicated and you choose to go ahead... all fees and services will be fully explained prior to any such services being rendered. Remember, most insurance covers chiropractic services.

We hope you always enjoy good health, but should health problems develop, remember this invitation to find out if chiropractic may be the answer.

FREE SPINAL EXAMINATION

Danger Signals of Pinched Nerves:

1. Headache, Dizziness, Loss of Sleep
2. Neck Pain, Tight Muscles
3. Pain Down Arms, Shoulder Pain
4. Numbness in Hands or Feet
5. Pain Between the Shoulders
6. Painful Joints, Nervousness
7. Lower Back Pain, Hip Pain, Pain Down Legs

Why FREE? Thousands of area residents have spine related problems which haven't responded to chiropractic care. This is one way of encouraging you to find out if you have a problem that could be helped by chiropractic care. It is also one way of assisting you with our staff and facilities. Examination includes a minimum of 18 standard tests for evaluating the spine and a complete analysis of the 26 vertebrae above.

While we are screening our patients, we are not and feel any obligation to provide any other services. An appointment is required for a complete chiropractic examination.

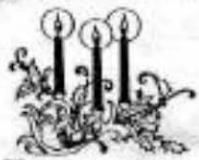
Xray and Treatment not included.

STIFFNESS LOWER BACK • SHOULDER PAIN • TIGHTNESS • ARTHRITIS

FATIGUE • HEADACHE • FAULTY POSTURE • NEURALGIA • SPINAL DISTORTIONS • TIGHTNESS • ARTHRITIS • HEADACHE

Mostly Books

3126 Harborview Dr.
Gig Harbor 851-3219



Presents
They'll Open
Again and
Again.....

Mon.-Fri. 9:30-5:30
Sat. 9:30-5:00 Sun. 1-4

Alpine Hut

German Gift Shop

Come in and visit our Christmas Room Beautiful Christmas decorations and ornaments from Sweden & Germany

We have a large selection of unique gifts.

13720 Purdy Drive
Gig Harbor, WA
857-7005

Winners named in Turkey/Gift Certificate drawing

In preparation for the Thanksgiving holiday, Walt's Fine Foods in Key Center, Walt's Shop 'N Save at Lake Kathryn Village Mall and the Key Peninsula NEWS, recently sponsored a coupon drawing for five turkeys and five \$10 gift certificates (redeemable at Walt's stores). We ran the coupon for two issues of the paper so everyone would have a good chance, and then we had a drawing from a huge pile of entries. The winners were all telephoned so that they could make shopping plans before the Thanksgiving holiday, and we were pleased to send them holiday good news.

The winners were: For the 12-lb. turkeys - Ann Whalen, Longbranch; Charlotte Hines, Port Orchard; Dorothy Peusa, Lakebay; Glenda Smith, Gig Harbor, and Ida Curl, Longbranch. Gift certificate winners were: Jean Lynn, Gig Harbor; Jane Martin, Lakebay; Ken Borslien, Herron Island; Arlene Beller, Gig Harbor, and Stanley Stemp, Home. Our congratulations, our good wishes for the holiday season, and our thanks to Walt Schmidt!

Pen. Hi athletes to run in Europe

Jay Latteri of Vaughn and Brett Wittner of Gig Harbor will represent Peninsula High School this December and January while traveling to England and Ireland with the TAC/Washington Cultural Exchange Cross-Country Team.

Both of these senior student/athlete's have run cross-country for Peninsula High School the past three years and track the past two years and will be turning out for track again this spring. These young men run the one and the two-mile distances in track events, and Jay also runs the steeplechase and presently holds the fastest time for a Peninsula steeplechase runner.

Jay attended Evergreen Elementary and Key Peninsula Middle School, and now also competes in Junior Olympics, finishing fourth in the steeplechase at the semi-finals in Spokane this past summer. Both Brett and Jay also race on the road-racing circuit when not involved with cross-country or track. They hold several course records for their divisions.

Both young men are presently working hard to raise the \$1,800 necessary for the trip. Donations to aid them may be made to Peninsula High School, c/o Head Coach Ben Licurance, 14105 Purdy Drive NW, Gig Harbor, Wa. 98335.

Key Stitch Upholstery

YOUR KEY TO FINE UPHOLSTERY
RESIDENTIAL - COMMERCIAL

- FURNITURE - REPAIR
- AUTO - TRUCK - BOATS - RV SEATS & CUSHIONS
- FABRICS & SUPPLIES

FOR THE DO-IT-YOURSELFER
FREE IN HOME ESTIMATES
FREE PICK-UP & DELIVERY

884-9288
1 MI. NO. OF KEY CENTER
14910 101 CT. KPN

APPLIANCE REPAIR

NO mileage charge in Key Peninsula area

A-TEAM

Service call charge includes most labor

884-3447

Key Center

Your ad in the KP NEWS reaches EVERYONE!

LOG HOUSE STUDIO

Dorl Richards Oil Painting with Palette Knife

Time to Spare?
Always wanted to paint?
Try it now!!

Stop by today

Palette Knife Classes at Log House:
Tuesday 12-3pm
Thursday 10-1pm
6-9pm

Treat yourself this Christmas
Classes are \$30/month
4 classes/month
3hr. classes

Log House Gift Certificates for Art Lessons are Available

Classes at:
The Country Mouse
Lake Kathryn Village Mall

Monday 1 to 4 pm

Hours:
1-5pm
Tues., Thurs., Sat.

884-4822

807 206th Ave. Ct. KPN
Lakebay, WA 98349

MACON BACON

The Coldest Beer Around!

ORDER CHRISTMAS HAM'S NOW!

All Red Dot Movies 99¢

B.B.Q. Ribs - Chicken nuggets - Sticky Chicken

Old Fashioned Smoke House
Meats • Cheese • Salami • Sausage

10 a.m. to 9 p.m.
Sunday 11-7

12402 134 Ave. KPN 857-5102

Chips - Bait
Pop - Ice

BURLEY GALLERIA

5 ROOMS FINE ART • HANDCRAFTED GIFTS
"Made with Love by Local Artists"

OPEN EVERY DAY

11:30—4:30 & Wed. Eves. to 7
857-7479

14820 Bethel-Burley Rd., Downtown Burley

We specialize in one-of-a-kind garments
Queen Size and LARGER
★ DON'T MISS OUR HOLIDAY SELECTION ★

See Maggie's FRESH WREATHS AND SWAGS!

We the people

by Paul Cyr,
Council member
District 7



Happy Holidays!

My regularly scheduled monthly forum for December 28 will be cancelled because of the holidays, but I look forward to seeing interested parties on the fourth Monday of the New Year, January 25, 1988.

A few things have happened since my last column: 1) The 1988 budget is before the Council for final passage on November 30 at 7:30 pm. This budget represents an overall increase of approximately 3 percent, and significant decreases within certain selected departments. The Pierce County Council is experiencing a 17 percent reduction over last year's level. The focus of this budget is primarily in law enforcement, both in terms of an increase in deputies, thanks to the passage of the Special Levy, and an increase in the courts to insure a smoother and more equitable justice procedure. Law enforcement represents approximately 60 percent of our budget. A few weeks back, the Morning News Tribune ran an article that implied that the Sheriff's department was using levy funds in support of regular ongoing operations. Upon investigation, I can assure you this is not the case. These levy funds will support 50 patrol officers over and above any level previously funded by the General Fund budget. Thanks to your vote, we will see five additional patrol officers for our Peninsula area beginning in 1988.

2) The Charter Review proposals, except for Proposal 5, were defeated overwhelmingly. I took the outcome of this election as a positive sign that people feel the structure of County Government is, indeed, working. I was, however, very concerned that during the campaign for the Charter Review amendments there was a great deal of negativism publicized about the County. I was so concerned about this negativism that I took it upon myself to meet with publishers and editors of two rural newspapers in southeast Pierce County, i.e., Pierce County Herald and South Pierce County Dispatch. I met with them because I have a feeling that rural Pierce County is not feeling represented in County Government. Frankly, I have tended to agree with that criticism and that's why we have met monthly on the Key Peninsula. There is an undertone of negativism that still persists and I would challenge those who are so disposed to make a positive contribution to the betterment of Pierce County and the Key Peninsula. Acting together, we can improve both service and attitudes.

Finally, in the spirit of cooperation, I look forward to working with the Key Peninsula Land Use Committee as they develop the plan for their area.

Best wishes for a happy and holy holiday season for you and your families.

Graphoanalyst of the year

Marie Brown, Certified Graphoanalyst (handwriting expert), was honored by the Washington State Chapter of the IGAS last week in Spokane, as the

1987 "Graphoanalyst of the Year," and received a plaque for the award which is in recognition of professional excellence and achievement. In addition, Marie was elected president and will begin her term in January. Marie is known locally for being active in lecturing, instructing in the adult education program of local

schools, and individual analysis for clients. She lives in the Gig Harbor area with her husband, Ted, but works throughout the state. Anyone wishing information about the state chapter or graphoanalysis can reach Marie by calling 884-4305, or writing to 14621 Holiday Dr. KPN, Gig Harbor, WA 98335.

Personalized checks. No extra charge.

Don't pay extra for personalized checks. It's only one of the features that make BanClub® checking one of the best bargains in banking.

 **Puget Sound Bank**
Sound is our middle name.

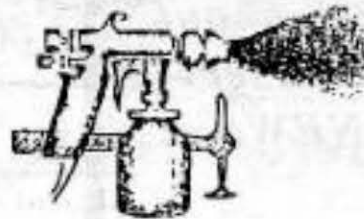
Key Center Branch

9017 Key Peninsula Hwy

884-9345

Member FDIC

Jerry's AUTO BODY Shop



13020 Wright Bliss Road
Gig Harbor, WA 98335
884-4458

Myr-Mar Accounting Service

Taxes
Bookkeeping
Financial Statements
Auditing

Member - NSTP
30 Years Experience

VISA/MC Welcome

13215 139 Ave. KPN
P. O. Box 557
Gig Harbor, WA 98335

Call
Marv Keizur 884-3566

THE GARDEN SHOPPE

9507 State Road 302, Gig Harbor
Next to Harvest Time Country Store

LIVE POTTED CHRISTMAS TREES

Colorado Blue Spruce
\$24.95

Colorado Green Spruce
\$22.95

Douglas Fir Sheared
\$18.95

Christmas Cactus from
\$1.95



Poinsettias

\$3.95 to \$6.50

857-6716

Classified

KP NEWS CLASSIFIED ADS SELL!
884-4699

Aerobic Classes, KP Civic Center in Vaughn. Monday, Wednesday, Friday, 9 to 10am; baby-sitting available nominal fee. Tuesday and Thursday 6-7 pm. 884-3642.

Custom Stained-glass Windows. 12-years experience commission windows for homes, offices, restaurants. Portfolio and references. By appointment. Don Porter, Box 184, Lakchay, WA 98349. 1-692-5807 (phone Mon/Tues).

Janice Wildman, RN, Nursing, Private Practice, providing foot care and foot massage in your home. 857-5669. Sliding fees.

We're back! Personalized **TAX PREPARATION-ACCOUNTING SERVICES.** Many years experience. Cal Marv Keizur 884-3566 - MYR-MAR Accounting Service. VISA/MC welcome.

Watkins Products are available at Lou's Country Collectibles, or call Marv and Myrtle Keizur 884-3566. VISA/MC welcome.

Have a gift problem? Save 25% or more! VISA/MC welcome. Call 884-3566.

Karate Classes available at the Civic Center in Vaughn on Tuesdays and Thursday at 7 pm. Dale E. Heidal, Instructor, Key Peninsula Isshinryu.

GIANT CHRISTMAS COOKIE SALE - December 19, 10am-4pm, Key Peninsula Health Clinic building, Brones Room. Good prices. Many varieties. Spread the Christmas cheer, support Key Peninsula Health Center community programs.

House-cleaning - Trustworthy, references, free estimates. 884-3116.

Appliance Sales and Service. Good, used appliances. Repair all brands. Free estimates. Blue Waters Distributors - Bud and Bob - 884-9898.

A Clean Sweep - Professional chimney cleaning by Peter Hitt - 884-3184. Senior discounts available.

Four Mission Oak dining room chairs, \$60. 884-3462.

Vacation Dog Care - 884-4511 or 884-4364.

WANTED- Part-time Manager/Bookkeeper for a rural Food Bank/Senior Center. Send resume to PO Box 159, Wauna, WA 98395.

Are you interested in Porcelain Dolls? Ginny-G. is starting up a doll class on Thursday, December 3, 10-3 pm, to help you. For info call 857-2207.

Carlisle's Typewriter Repair - free estimates, low rates, quality work, discounts for low income and seniors. Pick-up and delivery available. Sales and service. Phone hours 9am-8pm, Monday-Saturday. May get answering machine. Mastercard/Visa welcome! 884-4117.

Longbranch Cooperative Nursery School: Be a part of your child's preschool years. For information call Marita at 884-4640.

HELP! Visiting relatives. Need comfortable furnished small house or apartment for Christmas week. Tidy adults, no pets. Local references. 884-9441.

Homestead Crafts giving painting lessons in Tolc, decorative, Rosemaling and canvas. Acrylics and oils, all levels. Supplies and books available. New classes starting in January. 8557-3307.

Jessica's stocks sweatshirts, tees, jeans, slacks, sweater jackets, bikinis, briefs and socks - for all sizes and all ages. In Home next to Lakebay Post Office. 7 days a week 8-7:30 pm.

Thomas Trianon all-transistor Organ. 3 manuals - 25 pedals - Leslie speakers - Band box - Playmate Rhythm - headphone jack - Mediterranean cabinetry \$1,500. **Baldwin fun machine** 5 solo voices - 5 chord accompaniments - 12 Realrhythm drum patterns - Expression pedal - headphone jack \$500. 884-2814.

Home Laundromat will be closed on December 24 and 25. Have a warm and happy holiday!

WANTED: Mobile home lot with water, power, sewer complete. Will consider purchase of mobile home if on property. 884-2772.

Buy your Christmas gifts at Jessica's and get them wrapped or specially boxed for a small charge.

Angel Guild will be open usual days until December 12. Come in and do your Christmas shopping until then. Will be closed from Dec. 17 to Jan. 7. Will not be accepting goods during that period.

FOUND DOG! Young, small female Springer-mix dog found on Hwy 302/ Brook Restaurant area Nov.27. Color black and white with brown spots on legs. 884-3597 or 884-4699.

We do Alterations




We also replace zippers

Highland Cleaners

7110 6th Ave., Tacoma
5508 State Rd16
564-6471
851-3373

Your business card here will tell 14,000 potential customers about your products and services. Call the NEWS at 884-4699.

MIKE SIX, OWNER
206-884-9497



Mike's Plumbing

SOLAR INSTALLATIONS
REPAIRS & REMODELS
CUSTOM HOMES & COMMERCIAL

18120 BASS LANE KPN, LAKEWAY, WA 98349

Commercial Portrait

Harrold's Photographic Services

Harrold Farch (206) 884-9367

GIG HARBOR • TACOMA • PORT ORCHARD

RESIDENTIAL COMMERCIAL MARINE Gift Certificates

stress-free Cleaning **265-6654**



ADULT DAY CARE

Respite Care Project

Every Wednesday at 9 am.

Longbranch Automotive Center

AUTO REPAIR JERRY HANSEN
+ DOMESTIC Longbranch, WA.
+ FOREIGN South of the Church

884-3272

I CASCADIA/MEMBERSHIP SERVICES
2200 6TH AVENUE • TACOMA, WA 98403
PHONE: (206) 627-3133

INSURANCE
JOHN S. HUDGINS DUANE G. FLEMING
752-2499 884-3340

A Division of DUNCAN-HUDGINS & ASSOCIATES INSURANCE
OLYMPIA • TACOMA • SEATTLE

HOME FEED & GROCERY

Open 8:00-10:00 WEEKDAYS
8:30-8:00 SUNDAYS
884-2321

Featuring:
Beer - Wine - Cold Pop Feed
Fish Supplies Friendly Service

Christmas Sale

OUR GARDEN SHOP IS OPEN

"Bring your friends and enjoy selecting your holiday poinsettias from 20,000 plants"

Poinsettias



REDS - WHITES - PINKS - MARBLED

- 4" Single Bloom..... \$2.50
- 4" 3-5 Bloom\$3.00
- 6" 4-8 Bloom.....\$5.00
- 8" 10-18 Bloom.....\$15.00
- 10" Basket 30-45 Bloom.....\$25.00



4" CHRISTMAS CACTUS \$2.00

- DECORATED WREATHS**
- 20".....\$7.50
 - 24".....\$8.25
 - 32".....\$11.00



Indoor House Plant Selection

- 6" Boston Ferns..... \$2.99
- 6" Upright Foliage..... \$2.99
- Also Available
- 4" Foliage - 8" Foliage

Minter Creek Greenhouses



May you enjoy the Holiday Season and coming New Year

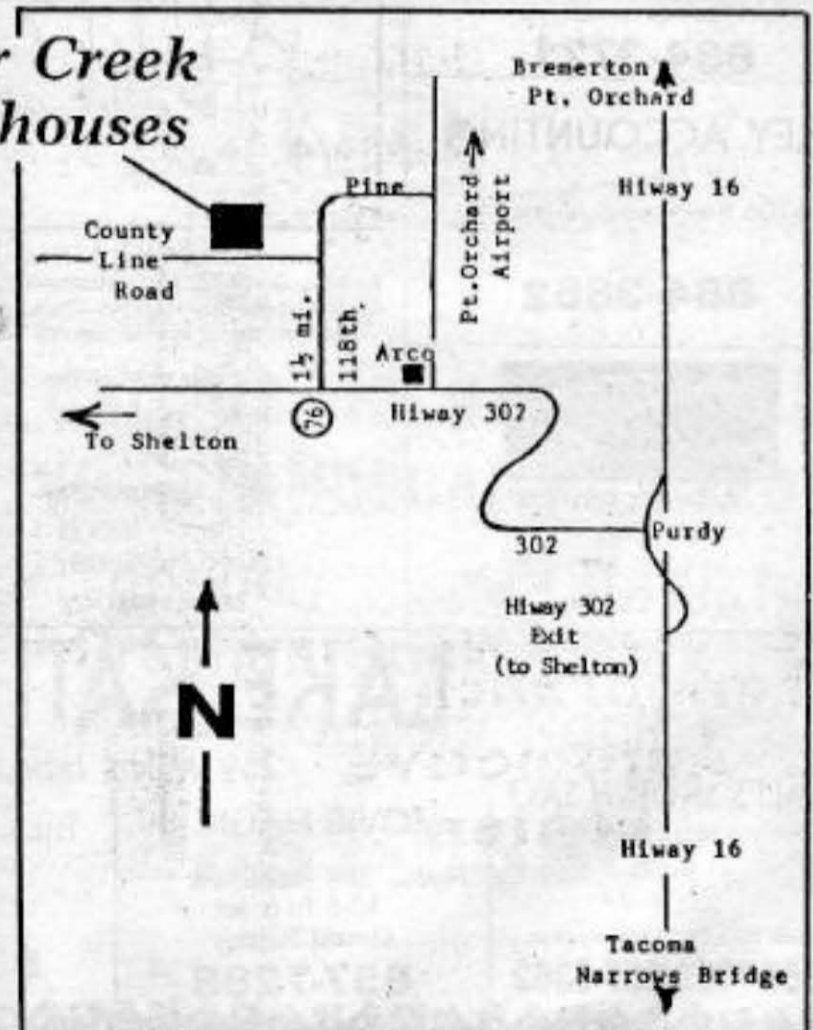
Minter Creek Greenhouses

(Rainforest Greenhouses)

3635 County Line Road
Phone 876-1500
Toll Free 1-800-682-2220



10 AM to 4 PM Seven Days a Week Through Dec. 23.



**KEY CENTER
CHIROPRACTIC**
OPEN 6 days a week
9013 Key Peninsula Hwy
Lakebay, WA 98349
K.C. Corral
884-3040

**TACOMA TELCO
CREDIT UNION**
9013 Key Peninsula Hwy. N.
Lakebay, WA 98349
K.C. Corral
884-9266

WALT'S FINE FOODS
OPEN DAILY 9-9; Sun. 9-7
Key Center on Hwy. 302
884-3325

**SUNNYCREST
NURSERY & FLORAL**
OPEN EVERY DAY
Key Center
884-3937

**LONGBRANCH
MERCANTILE**
Hours: 7 a.m.-9 p.m. Daily
5210 Key Peninsula Hwy S.
Longbranch
884-3721

KEY ACCOUNTING
6706 Key Peninsula Hwy S.
884-3862

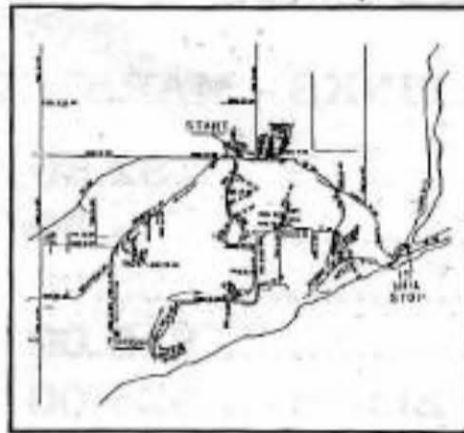


KPBA P.O. Box 439
Vaughn, WA 98394
Meet 1st & 3rd Friday
AT THE EATERY

SANTA'S COME TO THE KEY PENINSULA

Santa and the Firemen from District 16 will start at 6 o'clock every night!

Dec. 14—Monday



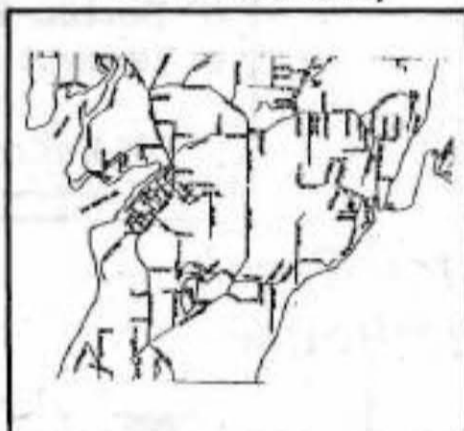
Start at Fire Station No. 1—Horseshoe Lake Estates—Vauna Post Office—6:20 Lake Kathryn Village for 15 Min.—Wind & Tides—Greentree—Winterbrook.

Dec. 15—Tuesday



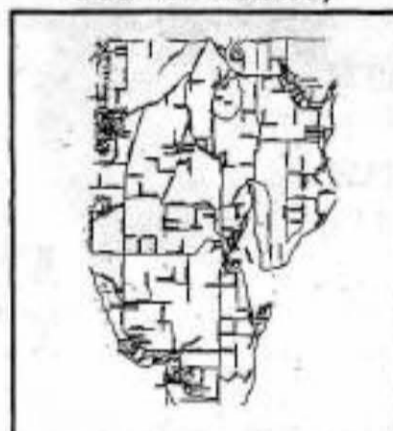
Start at Fire Station No. 2—Key Peninsula Lutheran Church—South Vaughn Rd.—Olin Point—Key Center Civic Center—Vaughn School—7:15 Lake Winterwood—126th—Cramer Rd.

Dec. 16—Wednesday



Start at Fire Station No. 3—Herron Island Ferry Dock—6:15 Home—Lakebay Church—Lakebay Marina—Jackson Lake—Will also be at Home around 7:00 p.m.

Dec. 17—Thursday



Start at Fire Station No. 4—Longbranch Church—Taylor Bay—Devil's Head—72nd St.—Cliff Ave.—76th St.—Whitman Cove Rd.—Palmer Lake—Palmer Loop Rd.—Whitman Cove—Evergreen School 8:15—Cornwall—Lorenz Rd.—Delana—142nd Ave.—Meridian—158th Ave.—Lorenz—158th—40th.

Dec. 12—Saturday
Herron Island
Dec. 18—Friday
Lake Holiday

Dec. 19—Saturday
Lake of the Woods
**THANK YOU
FIRE DISTRICT 16**

**MARY ANN
HUNTINGTON**
3380 S.E. Carmae Dr.
Port Orchard, WA 98366
876-5522

**KEY STITCH
UPHOLSTERY**
One Mile North of
Key Center
884-9288

ANGEL GUILD
Hours 10-4
K.C. Corral
884-2481

**BLUNDELL'S LONGBRANCH
CHOWDER HOUSE**
OPEN 7 DAYS A WEEK
11 a.m.-8 p.m.
5212 Key Peninsula Hwy.
Longbranch
884-4161

**DJ'S TIRE
& CAR CARE SERVICE**
Hours: 8 a.m.-5:30 p.m. MON-FRI
9 a.m.-4 p.m. SAT
13712 S.R. 302 KPN
851-4606

**PUGET SOUND
NATIONAL BANK**
9017 Key Peninsula Hwy. N.
Lakebay, WA 98349
Key Center
884-9345

DJ'S MINI MART
Hours: Mon-Thurs 5:30-10 p.m.
Fri-Sat 5:30 a.m.-11 p.m.
Sun 7:00 a.m.-10 p.m.
13706 S.R. 302 KPN
857-5712

LAKE KATHRYN VILLAGE

2 1/2 Miles North of the Purdy Bridge

WALT'S SHOP 'N SAVE
OPEN DAILY
9-10
Sun. 9-7
Meat Dept. Grocery Dept.
857-7599/857-5362

MOVIE MAGIC II
Hours: 10-7 Mon-Thurs
10-8 Fri & Sat
Closed Sunday
857-7288

THE COUNTRY MOUSE
OPEN DAILY
10-7
857-5399

SUN-RAY CLEANERS
Hours: Mon-Fri 8-7
Sat. 9-5
857-7984

PURDY COSTLESS DRUGS
Hours: Mon-Fri 9:30-8
Pharmacy Closes 7 p.m.
Sat. 9:30-7 Sun. 9:30-6
Pharmacy closed on Sunday
Prescription Dept.
857-7944/857-7797

More about Lakebay (Home?) Post Office..... by Keith V. Seavey

What a waste of time and effort..... From 1958, when the Lakebay Post Office was moved to its present location, until 1981 there was no apparent or voiced source of agitation for a name change.

In 1981 some Home residents circulated a petition to change the name of the post office from Lakebay to Home. According to a recent article in the Tacoma News Tribune the Home petition had over 100 signatures. In responses to the Home name-change petition, two people living in Lakebay circulated a petition to have the post office name remain Lakebay. That petition was signed by 268 persons, some of them living in Home - a ratio of over 2 to 1. The reason is very simple: more people live in the Lakebay area than live in Home. Lakebay is an area that reaches from Key Center to Longbranch to Delano Beach, and it surrounds Home.

Lakebay Post Office was established in 1882. In 1982 it celebrated its 100th anniversary. Home had a post office in 1900; however, it was closed in 1902.

Home is an unincorporated town, registered in Pierce County June 26, 1909. According to the map in the county auditor's office, Home goes from McEwan Road to just barely south of the Home bridge, a distance of between .9 of a mile and a mile. The map shows Home boundaries from one "square" west of the Key Peninsula Highway to the end of B street, west to east, approximately one mile. So we have an area roughly 1 mile square. The map shows 78 squares, or blocks; most squares or blocks are divided into 4 parcels. Each square or block is approximately 386x386 or 148,996 square feet. This divided by 43,450 square feet in an acre makes each square or block 3.42 acres. 3.42 divided by 4 equals .855 of an acre lot. Seven squares are much smaller. These boundaries do not include the Community Services building, which is the old Lakebay School. The building used as the Home School is located on the corner of 6th and C and is now empty, windows boarded up, brush growing wild, and a "for sale" sign on the front of it.

As the population of an area increases, the need for a larger post office increases. In 1985 the Lakebay Post Office was remodeled and increased in

size. The building is now designated: United States Post Office, Lakebay, Washington 98349. In front of the building is another sign which reads: Lakebay Post Office, Established 1882, Serving Herron, Home, Lakebay, Longbranch. Lakebay Post Office also serves part of Key Center.

Since the Lakebay Post Office serves five named locations, how many addresses does it service in each? The following information was received from the post office and is available to anyone interested in knowing it. 61 addresses in Herron; 61 in Key Center; 235 in Longbranch; 419 in Lakebay, and 88 in Home are serviced from the Lakebay Post Office. When the Lakebay Post Office was recently remodeled the number of post office boxes for personal pickup was increased to 422. 27 of those boxes are used by Home residents. Of the 11 families I know who live in Home, 8 of them list their addresses as Lakebay. The other 3 list their address as Home. Lakebay (from 1987 telephone directory).

A letter written by Ken and Stella Retherford, published in the October 19, 1987 issue of Key Peninsula News, indicates they believe Home to be the principal community served by the Lakebay Post Office. They do, because they live there. What do they base this belief on? Does 88 out of 864 deliveries make it the principal community? True, the post office is located on the southwest corner of Home, right next to Lakebay. Lakebay is the name by which the area is known, and the Lakebay Post Office has served the area for over one hundred years.

It seems to me that we should stop these ridiculous letters and put our time and energy to something productive. The people who read these letters must be sick and tired of them.

Shirley wins football recognition

Dave Shirley, PHS Senior, was recently named to the Tacoma News Tribune 1987 All-Tacoma Area Football Team as a Wide Receiver. Shirley is a resident of the Vaughn area, and was cited for catching 38 passes this year for a total of 808 yards and nine touchdowns.



Gateway Photo/Barbara Folwer

Claire McCourt's stamp promoting fire safety brought her the Postmaster's Choice Award in the Gig Harbor Post Office's stamp design contest. The design also won first place in her fourth-grade class at Evergreen Elementary School. Claire, 10, is the daughter of Jane and Jerry McCourt, and resides at Lakebay. Fire safety was an obvious topic for Claire, who handles the garbage and burning detail at home. She said the winning entry took her about two days to design.

PURDY TOPSOIL & GRAVEL



CALL US AND SAVE ON ALL YOUR LANDSCAPING NEEDS

- Topsoil
- Bank run
- Crushed Rock
- Bark
- Rockery Rock

857-5850

Next to Pierce County Shops at Purdy

Continuous Pre-Painted
Aluminum Gutters & Downspouts

- Residential
- Commercial
- Mobile Homes



OLYMPIC GUTTER CO.

275-5557

P.O. Box 134

Call Now For Free Estimate

Allyn, WA

Recycling a "must"

by John Wetzel

Many Key Peninsula families have been recycling with me over the past two years, and, as our landfills are fast being used up without any new areas becoming available, more recycling is needed. Pierce County landfill capacity is being exhausted faster than expected. We're continually throwing away more and recycling less, although twenty percent of our household discards can be easily recycled. It is estimated that by 1992 our two major landfills will reach full capacity and be forced to close. With this problem and, currently, no future landfill sites planned in Pierce County, recycling is rapidly becoming an alternate disposal solution.

What can you do? With disposal costs continually rising, our only means of offsetting this inflation is to reduce our waste volume. We can dramatically reduce our quantities of garbage if we recycle. We can make money by returning our recyclables to local buy-back recycling centers and we can save money by generating only one can of garbage per week instead of two.

Serious recyclers can reduce their volume of discards by more than 75 percent. Yard and food wastes make up approximately 30 percent of the average homes discards, and can be easily recycled through home composting. Composted materials make excellent garden and flower bed fertilizers. Paper products are approximately 30 percent of our discards. Newspaper is a good portion of that total, and is very easy to recycle. The remainder consists of books, magazines, and scrap packaging paper. This can all be recycled instead of going to the landfills. Glass products and metal products each consist of 10 percent of our discards. Both are produced from non-renewable natural resources and are very easy to recycle.

Recycling tips. Re-use products whenever possible. Set aside a portion of a closet or a corner of the garage for your home recycling center. A space approximately three feet by three feet is large enough to store one month's worth of recyclable products. Choose paper packaging rather than plastic.

More information on recycling household materials can be had by calling Wetzel's Recycling, 884-2772, for brochures, or Tacoma-Pierce County Health Department, 591-6450. There is also a Recycling Hotline, toll free 1-800-RECYCLE.

KP Citizen of the Year nomination time is here

The Fourth Annual Key Peninsula Citizen of the Year Award Banquet will be held at the Key Peninsula Civic Center on Saturday, February 27, 1988.

Local artists featured at Burley Galleria

Lakebay artist Lauri Martin and Port Orchard ceramist Karen Forsythe will be honored with a public reception at Burley Galleria, Sunday, December 6, from noon to 3 pm. Martin inherited her artistic talents from both her grandmothers and her mother. As early as grade-school, she was recognized as a child with artistic ability and was selected to attend a special class for talented children. Lauri Martin polished her craft and explored new areas of the art field. She graduated from Burnley in 1983 and established a sign business under the name, L.J's Artistry & Design." She designs logos, letterheads, business cards and brochures, but still manages to reserve some time to pursue her interest in fine art.



Forsythe has been recognized for her proficiency in ceramics for the past nine years. During that time she has created decor for town and country living, painted scenes on ceramic plaques, and worked with porcelain. Included among her many and varied talents are clothing design and calligraphy. Both Martin's exhibit, "Pen and Ink Lines of Lions and Other Creatures" and Forsythe's display, "Town and Country Ceramics," will be in place until Christmas.

Burley Galleria is open every day from 11:30 am to 4:30 pm, and until 7 pm on Wednesdays.

Now is the time to begin thinking of the person you feel is most deserving of this honor, someone you feel has selflessly served the needs of our community. Candidates for Citizen of the Year must be resident of or work on the Key Peninsula. Members of the Lions' Club are not eligible.

Previous recipients of this prestigious award are: Sally Corman (1984), Dr. William Roes (1985), and Loretta Jaggi and Vicki Henschel (1986).

Letters of nomination should include a description of why you feel your nominee is deserving of the honor. Please mail your letter of nomination to:

KP Citizen of the Year
Key Peninsula Lions' Club
P.O. Box 37 Wauna, Wa 98395

WIN A FREE LARGE PIZZA

We will give away a FREE large-size Great American Pizza with three toppings of your choice, to one of the first five readers who call us AFTER 9 am (exactly) on Wednesday morning, December 2, and tells us (exactly) "how many cubic feet there are in a square that is one mile on each side."

We will draw one name from the first five callers with the right answer. Phone us at 884-4699. NO EARLY CALLS!

Give the Gift That Keeps on Giving All Year Long

Do you know someone who has moved away but would like to be in touch with our community? Do you have friends or relatives in another state who would like to know what is happening on our Peninsula? If so, here is your chance to send them a gift that will remind them of you for a whole year --- 12 issues of the Key Peninsula News for just \$7.00! It's easy! Just fill out the subscription blank with their full address, enclose your check or money order to \$7.00, and send it to the Key Peninsula News, PO Box 3, Vaughn, WA 98394, and we will do the rest. Sorry --- we cannot bill.

Yes! Please send the NEWS to:

Name: _____
Address: _____
City, State & Zip: _____
I'm enclosing \$7.00 with my order.

Purdy Physical Therapy



- Total back and neck care
- Orthopedic rehabilitation
- Cardiovascular fitness

Roma Sue Kruse
Physical Therapist

6718 144 Street N.W.
(206) 857-7505

NEW HOPE FOR THE HEARING IMPAIRED

if you have trouble hearing in a crowd...
if you HEAR but do not UNDERSTAND...
if words run together...you may have
NERVE DEAFNESS, the most
common hearing loss.

A simple electronic hearing
test will tell you if a hearing
aid will help.

Call or Come IN TODAY
for a FREE HEARING TEST.

**HARBOR HEARING
AID CENTER**
851-3932
Safeway Shopping Center
Gig Harbor

KEY CENTER NATIONAL AUTO PARTS

COMPLETE LINE OF FOREIGN & DOMESTIC PARTS
DISCOUNT PRICES

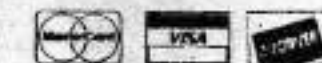


HOURS OPEN:
8:30 - 7:00 MON-FRI
8:30 - 6:00 SAT
10:00 - 4:00 SUN



KENDALL LUBRICANTS

**WAGNER
BRAKE PRODUCTS**



Machine Shop Service **884-3307**



Christmas IS COMING



TO LAKE KATHRYN VILLAGE MALL

2-1/2 miles west of the Purdy Bridge on Hwy 302

Close, Convenient, and Lots of Free Parking

Walts Shop 'N Save Market

Invites You to Drop in for Christmas Cheer!

- Free Coffee and Christmas Refreshments
- The Very Best Christmas Food Values
- The Friendliest Service Around
- Dependable IGA Food Products

THIS COUPON GOOD FOR THE
ITEM YOU HAVE WRITTEN IN

_____ **50¢ off**

Valid Dec 2 through Dec 8, 1987, at SHOP 'N SAVE, Lake Kathryn and WALT'S FINE FOODS, Key Center. Limit one coupon per item. Cash value 1/2¢. NOT VALID WITH CIGARETTES, BEER, WINE, LIQUOR, MILK OR FLUID MILK PRODUCTS, MEAT, PRODUCE OR ADVERTISED SPECIALS. NOT TO EXCEED THE RETAIL PRICE OF THE ITEM.



**LOTS OF GIFT IDEAS
LOW, LOW PRESCRIPTION PRICES**

*Cost Less wishes you a Happy Holiday Season
and Peace, Joy and Good Health*

COST LESS DRUGS

STORE PHONE 857-7944
PHARMACY PHONE 857-7797

STORE HOURS:
Mon.-Fri..... 9:30 am-8:00pm
Saturday..... 9am-7pm
Sunday..... 10am-6pm

PHARMACY HOURS:
Mon.-Sat..... 9:30am-7:00pm
Sunday Closed

Get your picture taken

with Santa on
Saturday, Dec. 5
2-5 pm

MOVIE MAGIC II

Free Drawing every Saturday...
Winner receives a free cartoon or a blank tape. You will be entered in the contest when you make a purchase or rent a video at either store.

Wishing You a Merry Christmas!
Dawna, Barb, Kathy, and Donnie

The Country Mouse

FOR THE NIFTIEST GIFTS

TRIMS FOR YOUR HOUSE
(wreaths, silk, flowers, ribbons)

A FRIENDLY CUP OF COFFEE
and a chance to win an original, hand-crafted **TEDDY BEAR**

SUN RAY CLEANERS

Come in and enter our **FREE DRAWING!** and Check our Christmas Cleaning Specials!

Merry Christmas to You and Yours!

Walt's Fine Foods

Key Center 884-3325

Hours Mon-Sat 9 - 9
Sunday 9 - 7

SAVE ON YOUR FAVORITE BRANDS

With Style

Hidden Valley 24 oz.
Ranch Dressing \$2.29



Danish Orchards
Jams Asst. 32 oz. \$2.59

Welch's
Grape Juice 12 oz. frozen .89¢



Pillsbury
Flour Bleached & Unbleached 10 lbs. \$1.99



Yuban
Coffee 3 lb. Regular & Auto-drip \$6.99



Krusteaz
Pancake Mix 7 lb. bag \$3.69

Zee 150 ct.
Facial Tissue .59¢

Earthtone 140 ct.
Napkins .79¢



Friskies
Cat Food 6 oz. Asst. Cans 3/99¢



V-8 Vegetable
Cocktail Juice 46 oz. .99¢



Stay Free
Maxi & Mini Pads 12 ct. box \$1.79

Banquet **Pot Pies**
Chix - Beef - Turkey 7 oz. 3/99¢



Banquet
Fried Chicken 32 oz. Regular & Spicy \$2.99



Hershey
Semi-Sweet Morsels 12 oz. \$1.39

Parkay
Margarine 16 oz. 2/88¢



Extra Fancy
RED DELICIOUS APPLES 3 lb./



Extra Fancy
GOLDEN DELICIOUS APPLES 3 lb./

We welcome you

Farm

THIS COUPON GOOD FOR THE ITEM YOU HAVE WRITTEN IN

15¢ off

Valid Dec. 2 through Dec. 8, 1987, at SHOP 'N SAVE, Lake Kathryn and WALT'S FINE FOODS, Key Center. Limit one coupon per item. Cash value 1/20 of 1¢ NOT VALID WITH CIGARETTES, BEER, WINE, LIQUOR, MILK OR FLUID MILK PRODUCTS, MEAT, PRODUCE OR ADVERTISED SPECIALS. NOT TO EXCEED THE RETAIL PRICE OF THE ITEM.

THIS COUPON GOOD FOR THE ITEM YOU HAVE WRITTEN IN

15¢ off

Valid Dec. 2 through Dec. 8, 1987, at SHOP 'N SAVE, Lake Kathryn and WALT'S FINE FOODS, Key Center. Limit one coupon per item. Cash value 1/20 of 1¢ NOT VALID WITH CIGARETTES, BEER, WINE, LIQUOR, MILK OR FLUID MILK PRODUCTS, MEAT, PRODUCE OR ADVERTISED SPECIALS. NOT TO EXCEED THE RETAIL PRICE OF THE ITEM.

THIS COUPON GOOD FOR THE ITEM YOU HAVE WRITTEN IN

25¢ off

Valid Dec. 2 through Dec. 8, 1987, at SHOP 'N SAVE, Lake Kathryn and WALT'S FINE FOODS, Key Center. Limit one coupon per item. Cash value 1/20 of 1¢ NOT VALID WITH CIGARETTES, BEER, WINE, LIQUOR, MILK OR FLUID MILK PRODUCTS, MEAT, PRODUCE OR ADVERTISED SPECIALS. NOT TO EXCEED THE RETAIL PRICE OF THE ITEM.



Walt's Shop 'N Save

2-1/2 miles west of Purdy Bridge at Lake Kathryn Village Mall

857-5362

Hours - Monday through Sunday 9am to 10pm



STIVE
D IDEAS
OR THE
OLIDAYS

our food stamps

Walt's fine meats

USDA Choice

Bnls **CHUCK ROAST**

\$1.59/lb.

USDA Choice

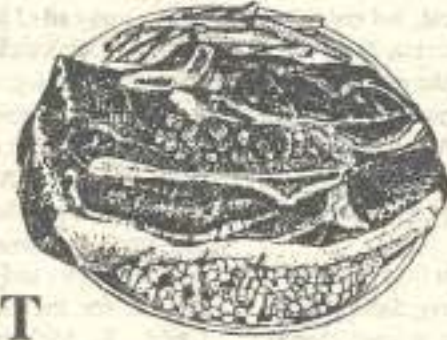
Bnls **CHUCK STEAK**

\$1.79/lb.

USDA Choice

Bnls **CROSS-RIB ROAST**

\$1.88/lb.



Lean

GROUND BEEF

\$1.49/lb.

Bnls

STEW MEAT

\$1.89/lb.



Lynden(Washington-grown)

WHOLE FRYER LEGS

.89¢/lb

Lynden(Washington-grown)

FRYER WINGS

.85¢/lb.

Lynden(Washington-grown)

FRYER BREASTS

\$1.69/lb

fresh produce

\$1.00

Large D'Anjou
PEARS



.29¢/lb.

RADISHES and GREEN ONIONS



4 bunches/**\$1.00**

\$1.00

u.S. #1
POTATOES

.69¢/10 lb.bag

"Original" Japanese

MANDARIN ORANGES

8 lb. box

\$7.98

Large

DANISH SQUASH

3 ca. **\$1.00**



THE
EN

5¢ off

Like Kathryn and
... Cash value
... LIQUOR,
... OR ADVER-
... OF THE ITEM

*We reserve the right to limit quantities.
Prices valid Dec.2 through Dec.8, 1987*



Old Fashioned Children's Christmas Faire

Old traditions brought to life....

Advent is a time of preparation for the coming of the Christ Child upon the earth. Spanning the four weeks before Christmas, it begins on the Sunday nearest the feast of St. Andrew (November 30). It can be a most important and fulfilling time, with preparations not only outwardly, but inwardly as well.

Saint Nicholas was a wealthy bishop who lived in early Christian times. He spent the latter part of his life secretly giving away all of his wealth and possessions. In Dutch tradition, where everyone removed their clogs at the door, St. Nicholas delighted in quietly placing gold and other riches in the clogs of the children during the night. In European tradition, it is St. Nicholas who comes to us at the beginning of Advent - December 6 is St. Nicholas Day - and calls on each of us to prepare for the coming of the Christ Child. St. Nicholas is not the central figure of Christmas, as Santa Claus has become here, but merely a beacon shining through the darkness, calling each of us to awaken and prepare the way. On St. Nicholas Day, children celebrating this day leave a shoe outside the door and, during the night, St. Nicholas leaves something in it as he makes his journey around the world.

It is out of this understanding and in appreciation of the wonder of children that the Morning Star Waldorf School celebrates the beginning of this season with its Third Annual Old Fashioned Children's Christmas Faire, Saturday, December 5, 11 am-4 pm at the school located at The Woods, Gig Harbor.

This is a fun-filled family day in the midst of the busy holiday season with music, crafts, story-telling, puppet shows and food for all. As in the past, there will be many opportunities for children to make a variety of items; dipped candles, cone bird feeders, sachets, holiday cards, wreaths, ornaments and more. In addition, there will be new activities for the older children (4-6 graders). Beginning at 1:30 pm with the story of St. Nicholas, St. Nicholas himself will visit the children.

Cats are strong....

Our friends from Shelton dropped in unexpectedly, to our surprise and pleasure. But why were they so plastered up with Band Aids? It was quite a story.

They had been supporting a mamma cat, now with her second batch of kittens, for months. They are cat lovers who would never injure a cat, but enough is enough. Something must be done.

They would feed the cats until they became tame, when they could be taken to the vet for neutering, then given to other kind souls. Day after day passed; they got closer and closer, but never actually did touch a cat.

One day a neighbor lady called over the fence, "Come on over, the cats are in my chicken yard, now is your chance, come and get them." Grabbing a couple of boxes, our happy friends went over to collect the cats - four kittens and mamma cat.

Getting through the gate was easy. All five cats crouched in the other corner of the pen, watching events with interest. "Now, mamma, we will just walk up on them quietly. Just talk softly to them like you always do. It looks like it will be easy. When we get real close, you grab a couple of kittens while I grab the mamma cat."

Everything went well until they made the sudden grab. His grip on mamma cat's neck scruff somehow slipped. She was emitting fearful shrieks and raking him with four feet full of miniature hay-hooks. His wife dropped a scratching kitten to help him. Her grip on mamma cat was just the purchase mamma cat needed. She grabbed our friend by the wrist and sank her fangs to the bone.

At this time, other plans are being made to catch the cats. He says, "Cats are strong."



LAKEBAY ROOFING

PIERCE, KITSAP, KING & MASON COUNTIES

RESIDENTIAL
RE-ROOFING
NEW CONSTRUCTION

24-Hour
Emergency
Service

SHAKE • HOT MOP • TILE
COMPOSITION • CEDAR SHINGLES

TOM ROLFZEN — Owner
WN. ST. CONSTR. REG. LAKE BR* 157KF

FREE ESTIMATES
857-3400 - 884-2186

Key Peninsula Park and Recreation District 1988 Proposed Budget

In a special meeting on Monday, November 23, the Key Peninsula Park and Recreation Board considered and adopted a proposed budget for 1988, based upon a "bare bones" approach to funding problems brought on by the recent defeat of the M & O Levy. Treasurer Daphne Daus presented the following revenue and spending plan for the year:

Election services	\$1,000.00
Salaries	9,000.00
Benefits	1,400.00
Professional services	400.00
Supplies	-0-
Office supplies	-0-
Travel	-0-
Insurance	5,500.00
Utilities	10,000.00
Repairs a& Maintenance	8,000.00
Miscellaneous	1,400.00
Total Budget	\$37,000.00
Offset:	
Residual Tax Balance	\$17,000.00
Anticipated rents	14,000.00
KPCCA	6,000.00
Total Offset	\$37,000.00

There is a small admission charge for the Faire, with each activity requiring an additional 50¢-\$1.00.

says President Detmering, "there is a year-round need for community support of the food bank. We hope that our new policy will enhance that support."

KP Lions assist local Food Bank

The Key Peninsula Lions Club Board of Directors recently approved a year-round program of monetary assistance to the local food bank. The club, for the remainder of the 1987/88 year, will provide the KP Community Services Center and Food Bank quarterly donations.

According to Key Peninsula Lions President Bill Detmering, this system of regulated donations will provide the food bank with a more consistent budget to work with. It's been easy in the past to give heartily at the normal heartfelt times, such as Thanksgiving, Christmas and Easter. KP Lions do not wish to downplay those times of caring. "Rather,



PETE'S
TOWING

AND



EMERGENCY ROAD
SERVICE
OF LAKEBAY

884-3124 RES.
849-6015 TRK. PHONE



LAKEBAY
WOODWORKS

BUILDING ON A REPUTATION OF QUALITY WORKMANSHIP
IN WOODWORKING AND CONSTRUCTION SINCE 1979.

John Carlson - Owner

884-3149

LAKEBW* 196JO

- Custom Home Building
- Additions and Remodeling
- Imaginative Design
- Quality Service

A Woman's Heart

by Elaine Forch



Around this time of year we hear a lot about the "street people." We're asked to give food and money to help the hungry and the homeless. These people are more than a sad story to me, because I see them every day when I pass the Rescue Mission on my way to work in downtown Tacoma. Even at 6:30 in the morning, they are already lined up to make sure they have a bed for the night. I can't help but stare because even though I want to do my share to help, and I don't want anyone to go without food or shelter, I'm curious. Why are these people there, anyway? Okay, I can understand drug and alcohol addictions and how ravaged a life can become when the substance becomes the God of a life. I can understand how the mentally ill could end up on the street because they don't know any better. But what about the rest? What would cause people with intelligence and education to give it all up for street life? What do they gain from making that kind of choice, or is it a choice?

Sometimes I suspect that my concern for the homeless is fueled more by fear than compassion. A scary feeling that, perhaps, some horrible event or circumstance may someday propel me into the same situation. Then I would be the one looking back at the staring eyes, dependent upon the fleeting mercy of others for my survival. But even this momentary empathy does not allow me to bring myself to touch them. They frighten me. They look dirty and dangerous and I feel very unwelcome and uncomfortable whenever I venture into their domain. I will help - but from a safe distance.

Some of the city employees who are responsible for cleaning up after these "street people" have lost all compassion for them. They don't think that we "bleeding hearts" are handling the situation correctly, in fact, they think we might even be encouraging the filth and the panhandling because we keep giving them things - for free. They feel bitter and resentful because "street people" don't have to work to survive like the rest of us. But what kind of a life do they really have? It's cold and miserable at least half of the year. It has to be dangerous and life-threatening. They sleep under bridges and on park benches with old pieces of cardboard or damp, filthy blankets for cover. What happens when they get sick and ready to die? Aren't they afraid? Where are their families? I don't understand what would motivate an intelligent, educated person to give up everything and care for nothing. If they are intelligent, what do they do with the question that all intelligent people ask themselves sooner or later, "what is my life about and why am I here?" Are they, as some believe,

Evergreen Elementary

On November 10, Ms. Cartwright and five fifth-grade students attended a physical science fair sponsored by the Pacific Science Center. The students made pendulums and discovered that the time a pendulum takes for each swing depends on a single factor in its construction. (Do you know what it is? Ask an Evergreen fifth-grader.)

Another workshop presented the children with an apparently unsolvable problem. They were told to fit a quarter through a dime-sized hole in a sheet of paper. The kids accomplished the task using concepts from topology - a branch of mathematics that deals with the invariant properties of distortable shapes. (Can't figure it out? Your local fifth-grader can show you how.)

During a workshop on crystals, students "seeded" a saturated salt solution and watched from the vantage of microscopes as crystals grew and faceted before their eyes. Ms. Cartwright and the five children were given materials and ideas to bring back to the classroom, where they plan to conduct similar workshops for the rest of the fifth-grade class.

Assaulted by turkey...

A South Tacoma man reportedly went to jail on Thanksgiving Day charged with assaulting his live-in girlfriend with a turkey. According to police the weapon used was not placed in evidence because it was roasting in the oven.

Naked chickens?

It is possible to raise chickens without feathers experts say, but no one seems much interested as most of the bird's food energy is spent in trying to stay warm. They do better in Palm Beach!

simply so lazy and irresponsible that they care only for themselves? Did some catastrophic event happen to take away their will to participate in life? Do they love anyone?

What should our response be to them? Should we only help them if we can determine that they truly deserve it, and deserve according to whose standards? I'm really glad that my family loves me even when I don't deserve it. I think that may be the real meaning of Christmas. Learning to love someone that really doesn't deserve it at all. Someone did that for me once ... and He wants me to do the same for others.



Evergreen Elementary students (front, left to right) Sam Watkinson, Donny Wright and Jodie Sammons, and (back, left to right) Sylvia Sammons and Jennifer Marin admire the "home-grown" crystals produced during their Pacific Science Fair trip.

Army creates "patch" for civvies

Former members of the U.S. Army will soon have an official shoulder patch to wear on their civilian clothing, representing accomplishment and the completion of a career in the Army. A "U.S. Army Retired" patch has recently been approved by the Deputy Chief of Staff for Personnel, and should be available for sale in military clothing stores by early 1988. It will not be issued.



Established 1972

GRADER SERVICES

RESIDENTIAL & COMMERCIAL
EXCAVATING
ROAD GRADING
LOG BULK HEADS
SEPTIC SYSTEMS
ROAD GRAVEL
FILL DIRT
TOPSOIL
SAND

PHIL RADCLIFFE

884-2271
LAKESIDE

7411 CANON BELL DR.
STATE LIC. OR. AD. ES. 2346M

Tom & Sherry Bushnell



Chimney Sweep

A good job at a good price - Vacuum System
"No mess" guaranteed

AVOID A CHIMNEY FIRE

FREE INSPECTION

Summer is coming to an end, now is the time
to get your chimney ready for winter fires.

884-2585

KPBA News

by Mary Ann Huntington



The Key Peninsula Business Association finalized plans for its first annual tree lighting ceremony at the November 20 meeting. A beautiful 25-foot Douglas fir donated by Bayview Farms in Victor will be put up in front of the Key Center Corral. Members of the KPBA are making decorations and lights have been purchased. The firemen have coordinated their plans with us, so Santa will arrive by firetruck at 4 pm on December 6. The Peninsula High School mixed choir will lead everyone in a Christmas carol sing-along. Sounds like a lot of fun, so bring the whole family. Don't forget your camera.

Watch this newspaper after the first of the year for details on an exciting Washington's birthday promotion sponsored by the KPBA. There will be prizes galore and a chance to handle some "big bucks." That's a clue, so keep your eyes on this column.

Election of officers for 1988 will be held at the next meeting of the KPBA, on December 4, 7:30 am, at the Eatery. Outgoing officers are President Cherie Mastro, DJ's Mini Mart; Vice President Wendy Wakeling, Superior Signs; Treasurer Don Tjossen, Puget Sound National Bank, and Secretary Pat Blundell, Country Mouse. Since the Key Peninsula Business Association has only been together for one-and-a-half years these people are our charter officers. They deserve a big thank you for the countless hours they have put in making the Association so outstanding. I plan to have a story in next month's NEWS depicting the achievements accomplished by this new club.

Our meetings are open to the public. Start the new year off right and get involved with your community.

In the Library

A special program and party will be held at the Key Center Library, Wednesday, December 9 at 7 pm.

The program will feature music, poetry, and song. The Cascade Chamber Players from Edmonds will perform early classical works, concluding with a Bach prelude by Kiva McMorrow on the harpsichord. The group also includes Barbara Logan on flute and Peter Schugren, cellist.

Croft Huddleston will read two selections from the Bible, poetry from Shakespeare, Milton, Blake and Browning, and he will sing, "Flow Gently, Sweet Afton," by Robert Burns.

Refreshments will be served. This is a party for and by the Friends of the Key Center Library. Friends of Friends, relatives, and the community are welcome.

Key Peninsula Lutheran Church

Key Peninsula Hwy. and Lackey Road

Robbie Sachs, Pastor

SUNDAY SCHOOL 9:00am
WORSHIP SERVICE 10:30am

Everyone Welcome



Car, Truck, Trailer Service Now open in Home!

- Foreign & Domestic Cars Repaired
- Brake Drums and Rotors Turned
- Box Trailer Rebuilding
- Engine Overhauls
- Tractors & Heavy Equipment Service
- Large Truck Engine Service
- All Work Guaranteed
- 23 Years of Experience

M & M AUTO REPAIR

19011 Herron Road KPN

(Between Home and Herron Island Ferry Dock)

Home, WA

Hours: 6am-6pm, Mon.-Sat.

Allan Mowatt,
Owner

884-4286





KEY WESTERN

KEY CENTER 884-2311

BUILDING CENTER



BARGAIN OF THE MONTH




14.99 While Supplies Last

Mini Mite™ Cordless Rechargeable Hand Vac w/charging stand, telescoping nozzle. QTY 1

QUANTITIES LIMITED

250 Watt HEAT LAMP BULBS
Brass Base Eliminates
Corrosion and Lamp Sticking
in Socket

\$4.95 ea.



OIL LAMP





HARDWARE VALUE OF THE MONTH




While Supplies Last

2.99

Mini Tuff-Lite® has rubber case, powerful beam and a compact size! Incl. batts. QTY 1

QUANTITIES LIMITED

A GREAT GIFT IDEA



\$12.05

Christmas Holiday Hours:
Closed 1/2 Day Dec 24th
Closed All Day Dec. 25-27

WE HONOR BANK CARDS




LIMITED TO STOCK ON HAND

HOURS:
Mon. - Sat. 8-5



LCD ANALOG
WATCH
As seen on TV for \$19.95
OUR PRICE \$2.99

RAIN GEAR
Come in and check our
large assortment of PVC-
NYLON RANGER featuring
Halco & Norwester.

Happy Holidays

BUYERS DISCOUNT VARIETY STORE

RAMAGON Creative Construction System

50 pc.	\$ 6.99
90 pc.	9.99
169 pc.	15.99
363 pc.	24.99

Ages 5 yrs. and up
Most remarkable building toy since blocks

MAJORITY RULES
The world's most exciting games for ages 8-80

\$3.99

25 piece Buffalo Brand
SOCKET SET
Life Time Warranty **\$14.99**

24 piece Buffalo Brand
Combo
WRENCH SET
\$19.65

Multi Purpose Clear
TAPE 20¢ ea.

RIVAL w/knife sharpener
CAN OPENER **\$9.99**
full 5 yr. warranty

TOASTMASTER
TOASTER

2 Slice toaster	\$10.99
4 Slice toaster	\$23.29

WEST BEND POPPERY II
CORN POPPER
4 qt. Automatic Hot Air **\$13.29**
The fastest corn popper around

MELITTA AromaCentre
COFFEEMAKER
The famous Melitta cone filter for superb tasting coffee **\$24.89**

Holiday Gift Wrapping Supplies

Holiday Bows
Package of 25 **49¢**

40 sq. ft.
Christmas Wrapping Paper **99¢ ea.**

Allen Roberts Clear Tape
1/2" x 450" **25¢**

Ribbon Dispenser Pack
3/4" x 5 yds. 10 rolls **99¢**

3 pc. set with lids
MIXING BOWL
1,2,3, quart **\$3.99**

Corella Natural Images
DINNERWARE
16 pc. set **\$17.00**
2 yr. guaranteed

Sir Lawrence Collection
Professional
CUTLERY **\$5.99**
10 pc. carbon steel

HiTech Mobile Sound
CAR STEREO
\$59.95

Universal Premium Grade
T-120 VHS
VIDEO \$3.29
CASSETTE

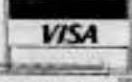
Located in
Purdy Shopping Center

OPEN
9am - 7pm Mon.-S
10am - 5pm Sun.

857-3371



Limited to Stock on Hand



Peninsula Athletic Association "tid bits" by Don Whitfield

The Peninsula Athletic Association Youth Board and the Key Peninsula NEWS are working together to keep everyone aware of what's happening in the world of PAA.....

Basketball sign-ups were due back November 10. There are 18 boys 5th/6th-grade teams, with 6 teams representing the Key Peninsula:

- Joe Mercado Evergreen Eagles
- Michael Fultz Vaughn Varminets
- Don Whitfield Minter Bobcats
- Jim Bagley Minter Sonics
- Mark Cupit Purdy Panthers
- Bob Leslie Purdy Rams

Each team will play approximately 10-14 games, with a post-season tournament. Games will be scheduled for one week-night and Saturday.

The basketball season starts the first part of January 1988 and usually lasts through February. We do not have the exact schedule yet.

It is not too late to sign up for basketball. Any questions should be directed to the appropriate commissioner:

- 3rd/4th boys - Bob Evalt 884-4157
- 3rd/4th girls - Carol Shipman 858-3763
- 5th/6th boys - Don Whitfield 851-5813
- 5th/6th girls - Marti Bagley 857-7230

Avon Gay, John Bare to head levy committee

Peninsula School Superintendent Tom Hulst has announced that Avon Gay of Minter Creek and John Bare of Gig Harbor will be "co-chairs" of the 1988-89 Peninsula School District Levy Steering Committee. The Committee is currently being formed by members of interested citizens groups to support the passage of the Maintenance and Operations Levy for the Peninsula School District that is expected to be placed before the voters in late-winter/early-spring of next year. Superintendent Hulst explained that the M and O Levy comes up for a vote every two years, and that the funds derived from it provide for the portion of local school costs that are not funded by the State.

Hulst also stated that the Peninsula School District has the second lowest levy tax rate among comparable districts in Pierce County, and that the rate is considerably below the \$3.37 per \$1000 assessed valuation average of the other nine districts.

Key Center Shell
884-3431

December Specials

Batteries 10% OFF
Lube, Oil & Filter
most cars & light trucks
\$19.95

Mount & Dismount
Snow Tires
\$1.00 off per wheel!

"Quality Care for Your Car"

Blundell's Longbranch Chowder House

JOANN AND DOUG BLUNDELL
Are back and open for business


OPEN DAILY 11AM - 8PM
884-4161

5212 Key Peninsula Highway
Longbranch, Washington 98351



on beautiful Filucy Bay

J & M's Auto Electric



- Computer & Emission Systems
- Carburation and Tune Up

Small Engine Repair

Jim & Margaret Elmore 1 mile No. of Key Center
Phone 884-9414 Next to Key Stitch Upholstery

Hours: 9:00 am - 4:30 pm Tuesday through Saturday

Please support the many fine local merchants that serve our community and advertise in the NEWS. They provide the products and services we all need, and make the publication of the NEWS possible.

Trendy Warm, Wooley and Wild


Holiday Gifts You Can Make Yourself

Top 16 Knit/Crochet patterns for the Season.
Plus new selection every month
By Leisure Arts

Knitting Machines 10% off

Jiffy Steamer J2 for blocking

Selective Colors of Sayelle 89¢ ea.



Select your favorite Novelty
Yarns & Supplies
Knit King Dealer

ALMA TRAMILL'S

N.W. Distributors/Knitted Fashions

Competitive Prices Senior Discounts
884-2088 OPEN Mon.-Fri. Sat. By Appt. only

Accepting VISA

off So. Vaughn Road

NORTHWEST OUTDOORS

6960 Kimball Dr., Gig Harbor
Pioneer Plaza




Berkley Trilene Big Game® Line

Buy by the yard and save when you fill your reels

As low as **1¢** per yard



Berkley Trilene®

MERRY CHRISTMAS

Thank You Key Peninsula Patrons for your support in 1987

851-9223

WE'RE SANTA'S HELPERS

Christmas just isn't Christmas without
YOUR VISIT to our Christmas
 Shop. Ideas of decorating
 and gift giving
 are spread through-
 out the store

*Come see and
 enjoy!*

**Fresh Floral Designs
 For Your Home
 or Office**



**DON'T FORGET - WE CAN WIRE HOLIDAY FLOWERS
 TO YOUR FAMILY AND FRIENDS**



Gift wrapped

POINSETTAS

Beautiful festive Poinsettas
 say
"Merry Christmas" as only
 the Christmas Flower can
 Several **SIZES** and **PRICES**.

We can also wire Poinsettas
 to your family and friends.

Amaryllis and Paperwhites

Boxed & Ready for
 Gift Giving

\$5.95 and \$6.95



ORNAMENTS
 LIGHTS
 GARLANDS
 CARDS
 CANDLES

Wreaths

**Fresh and Everlasting
 Evergreens and Sprigs of Holly**
 priced from **\$12.99**

**WE SHIP WREATHS - Continental USA
 \$16.00**

Garlands
 Available



Gifts For The Gardens

TOOLS
 BOOKS
 BONSAI SUPPLIES
 BIRD SEED
 BIRD FEEDERS

IT'S CHRISTMAS

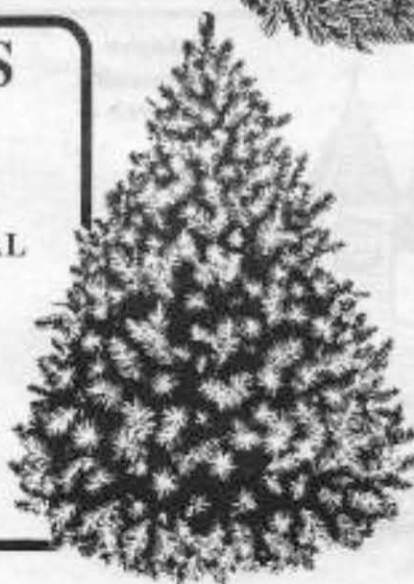
Now is the time to select your
 Christmas tree from our wide
 variety of choice evergreens.

FIRS • SHEARED, NOBLE, NATURAL
 Large and Table Top

LIVE POTTED TREES
 several types and sizes

We Do Custom Flocking

Bring in your own cut tree for that
 winter wonderland look



884-3937
 KEY CENTER

Mon. - Sat 9am - 6pm
 Sunday 11am - 4pm

VACATION WITHOUT FEAR

THE BEAST FEEDERS
OF
KEY PENINSULA AND S.KITSAP
CARETAKERS OF DOMESTIC ANIMALS

884-4511

(mammals, birds, cats, felines, reptiles, crocodiles, fish, etc.)

Tax Services
Financial Statements

Auditing
Bookkeeping

KEY ACCOUNTING
Fran Kent, Accountant

6706 Key Peninsula Hwy. S
Longbranch, WA 98351

Phone
(206) 884-3862

Utilities & Site Preparation

PO Box 191
11302 Burnham Drive N.W.
Gig Harbor, WA 98335

active construction Inc.

(206) 851-4696

AC-TI-VC-1-16-1JL

Randy's Bulldozing

4 in One Bucket • Land Clearing • Stump Haul
Excavating • Dump Truck • Roads Punched
• GENERAL DOZING •

RANDY NIMRICK 857-5325
HARRY NIMRICK 884-2590

10512 126th Avenue, KPN
Gig Harbor, WA 98335

L.E. Jopp Builders

- ★ Carpenter Work
- ★ Foundations
- ★ Bulkheads
- ★ Concrete Work etc.

884-3841

LICENSED & BONDED CALL COLLECT

ALCOHOLICS ANONYMOUS

MEETING HELD AT
KEY PENINSULA
MIDDLE SCHOOL
Mon. & Fri., 8 p.m.
Call Ann 884-2626

Specializing in Custom Homes

R & M ELECTRIC
RESIDENTIAL AND COMMERCIAL WIRING

MIKE NIEMANN 884-3778
ROY DANFORTH 884-2869

P. O. Box 48 • Burley, WA 98322

BULLDOZING BACK HOE

GRAVEL AND FILL DIRT LOG BULKHEADS

Johnson Bulldozing Co.
LAKEWAY, WASHINGTON 98349
PHONE 884-2362

DAVE JOHNSON PHONE 884-3330
PHIL JOHNSON PHONE 884-2607

JOHNSB • 245DE

UPERIOR SIGN CO.

851-2088 / 377-8141

1623 STONE DRIVE NORTHWEST, GIG HARBOR, WA 98335

Longbranch Community Church

Bible Study 10:15
Worship and
Sunday School 11 am
Longbranch, Wa.
Dr. David Suter, Pastor, 884-4833

Truck-mounted Steam Cleaning
One of the Most Powerful Systems

NW CASCADE Carpet Cleaning
884-3265

Living Room • Dining Room • Hall — \$39.95
Free Spot Removal — Leaves No Residue

Licensed Bonded Insured

Residential Commercial

S.J. Akins Construction

Sam Akins
4819 Key Peninsula Hwy. So.
Longbranch, WA 98351
884-3522

New Construction Remodeling

Vaughn Community Church

"The Chapel by the Sea"

9:00 am Sunday School
10:15 am Morning Worship
6:00 pm Evening Service

NURSERY PROVIDED

884-2269
884-3540

S.A.V.E. Thrift Store

Donations Welcome

Open Thurs.-Fri.-Sat. 10-2

Located just off 144th, Next to P.H.S. Pool

GEORGE'S FINAL TOUCH CARPET CLEANING

Complete Line of Interior & Exterior Painting

24 HOUR EMERGENCY
WATER EXTRACTION

ALL WORK GUARANTEED

GIG HARBOR 884-4387 Free Estimates

PENINSULA KEY & SECURITY Locksmith

851-9620

7825 46th Ave. NW
(Roedale and 48th)

Around the yard

by Tim Kezele

Insects: "Fruit flies" take no time to establish in a home. They can move in from outside or with fruit carried in and placed in a bowl. Once in they can breed and increase in great numbers. Any fruit or vegetable scraps make a great host for a breeding area. So make sure to remove such scraps out to the compost or garbage. An aerosol pesticide applied according to label directions is helpful. Sharon Collman, W.S.U. Cooperative Extension Agent in Snohomish County, says leaving a wine bottle uncorked overnight made her kitchen more livable, and the wine undrinkable!

Tree's & Shrubs: Browning of evergreen conifers is normal for this time of year. Look for the older or inner needles to be the browning ones. With the water stress trees are experiencing this year, more needle loss may be noticed. If entire limbs are dying out you may have greater problems than just the usual loss. Call the Pierce County Extension Service and ask for Bulletin's 1020 pr. 157.

Veggies: A bit of obscure knowledge about garlic: Garlic ground to a very fine liquid in a food processor can be sprayed on various insect larvae to kill them, and the odor of garlic repels some herbivores. Scientists at the University of Washington discovered Douglas fir seedlings will give off a volatile, garlic oil-like substance in the presence of high levels of selenium, an element closely related to sulfur. Deer find the garlic-like smell of dimethyl selenide offensive enough to pass up tender seedlings.

The fact that many animals find the odor of garlic repulsive suggests that its adaptive significance, from an evolutionary point of view, is to deter animal predators, most likely rodents, from eating the bulb. This makes sense given that the odor develops after injury to the bulb or plant.

VFW #4990 Christmas Party!

VFW Post 4990 and Auxiliary will have its Christmas party on is December 14 in the Gold Room of the Civic Center. A social hour will start at 6:30 pm and a potluck dinner will follow at 7:30.

A special welcome is extended to past members to come and visit with friends, and to others who are interested in joining the group.

After dinner there will be a gift exchange, each woman should bring a gift for a woman, and each man - a man's gift.

Now we know the cause!!!

Ever wonder why they act that way in Los Angeles?? A scientific group, making readings in the West Los Angeles area to detect pollution and pollen levels about two weeks ago discovered that approximately 40 per cent of the weed pollens in the air were coming from marijuana. A number of Los Angeles officials insisted they were "very mystified and surprised". Lots of other people weren't.

Upper Sound Grange 705

Lecturer Marguerite Bussard reports that Upper Sound Grange 705 will have its Christmas potluck dinner on December 4, 7 pm, at the Civic Center. The Longbranch Church Choir, under direction of Joyce Case, will entertain.

Members are asked to bring canned food for the Community Services Food Bank.

So the next time you smash a clove of garlic on the cutting board, and catch a whiff of that remarkable odor, remember that the plant is just trying to protect itself from being eaten by you.

Community House news

by Helen Jamieson

It's that time of year again! The time when each of us reflect over the past 12 months and are thankful for the joys of the year. Each of us plan to celebrate the coming Holidays in different ways and each of us share ourselves with others at this special time of year!

This year, as in the past, we at Community House will be providing Christmas baskets of food, used clothing, toys and household items for those in our community who are less fortunate than ourselves because of loss of income or health. This project, of course, is impossible without the help of our friends and neighbors who give so generously to our project, and we are asking for your assistance again this year to help families on the Peninsula enjoy the Christmas season.

If you wish to contribute non-perishable food items, used or new toys and gifts, or cash to Christmas Project 1987, please call us at 884-4440, or send donations to PO Box 392, Lakebay, WA 98349. You may drop off your donations at Community House any day, Monday through Friday, until 3 pm.

We would love to have you stop by and visit, and see what we are doing. And, of course, any time you may have to donate for sorting, packing, etc., will be appreciated.

Any questions can be answered by calling Sharon Billups, our director, at the above number, or you may call me at 844-3691. Community House thanks you for your consideration in this project, and for your help in the past!

VIDEO GAMES

PARTY ROOM AVAILABLE



Less work for Mother

with this coupon
Your Choice of 1 Free Topping
 not good in connection with any other offer Exp. 12/14/87

with this coupon
\$3.00 OFF When you Purchase 2 Large PIZZAS
 not good in connection with any other offer Exp. 12/14/87

Pizza Hot or U-Bake Eat Here or TAKE Home Deli & Hot Sandwiches

Cappuccino - Espresso

We Accept Food Stamps
884-9599 Downtown Key Center

Business Hours:
 Mon.-Thurs. 12-8
 Fri.-Sat. 11-9
 Sun. 1-8

JOE'S BUTCHER BLOCK PURDY

Custom Meat Shop & Smoke House

Good Prices on Volume Buys (meat packs) 1/4's & Sides



Wild Game Processing Sausage made



ORDER NOW! Dry Cured Old Fashioned Ham for the Holidays

We carry unusual selections Seafood Sausage Apple Sausage

Farmer George Recipes Naturally Smoked Meats Chicken - Turkey - Bacon

Game Cutting Locker MEAT



We offer eastern Washington Grain-Fed Beef

Come in and shop our large sausage selection In the Bridgeway Market

857-7511

OPEN 24 HOURS DAILY

876-3186

To your health



by William F. Roes, MD

The question comes up from time to time about the value of "screening tests," or medical studies to look for the presence of disease when there are no signs or symptoms to suggest illness. These tests should be cheap, reliable, and sensitive enough to pick up early cases of the disease in question. A perfect example is a TB Tine test - it's easy to administer, inexpensive and accurate. Recently, there has been considerable discussion and several advertisements in the local press for prostatic ultrasound, but to my way of thinking this test does not yet qualify as a "screening test" for prostatic cancer. A brief discussion of that disease may help explain why.

The prostate is a small gland in men, located at the neck of the bladder. With increased age, the gland grows and often causes problems with the man's ability to urinate, causing urinary frequency, a weak stream, and frequent trips to the bathroom at night. This condition is called prostatic hypertrophy and is very common in men in their 70's and older. This is also the most common age for prostatic cancers, which can have similar symptoms or no symptoms at all. This disorder can be evaluated with a prostatic exam and x-rays of the bladder, and suspicious cases are usually referred to a urologist, a specialist in bladder and prostate problems. The urologist will frequently proceed with cystoscopy, or looking into the bladder, as well as prostatic ultrasound, with possible biopsy or surgery as the end result.

Prostatic ultrasound is performed by inserting a small probe into the rectum and interpreting the sound wave patterns displayed on a video screen. Although the procedure is not dangerous or particularly painful, it is expensive (about \$185) and requires skillful interpretation of its somewhat subtle results. For this reason, I believe it is indicated for evaluation of specific problems following prostatic examination, and is not a necessary or cost-effective screening test.

Finally, as the year draws to a close and a new one starts, I want to join the staff in wishing you the best and safest of holiday seasons.

Bayshore Garden Club making swags and wreaths

As a money-raiser, Bayshore Garden Club is again making their very attractive swags and wreaths for the holiday season. They are planned to be ready any time after December 10, and anyone wishing to purchase should contact Ruby Hatch at 884-3787 or Jean Humphreys at 884-3716.

PHS band concert

by Becky Howson

The PHS Band concert will be held December 14 at 7:30 pm in the Milt Boyd Auditorium. The concert and symphonic bands will perform several selections of Christmas music as well as serious symphonic band music. This is the first concert of the school year with our new band director, Matso Limtiaco.



Matso is a 1987 graduate of the University of Washington with a B.A. in Music Education. While at the University, he was a member of the Husky Marching Band and Studio Jazz Ensemble. He is active as a professional saxophonist and music arranger in the Seattle area.

The band members and band boosters group are very excited about this year. The band members will be selling raffle tickets at several grocery stores December 5, 6, 12, and 13 with the drawing the night of the concert. First prize is \$100, second prize is \$75 and lots of miscellaneous prizes. The fund raiser is the beginning of several to purchase new uniforms for the group.

Also performing at the concert will be the Normanna Male Chorus of Tacoma which consists of approximately 40 voices of Scandinavian descent. They will be singing: Hil Dig Norge, Krigeren's Drom, Stouthearted Men, Jeg Er Sa Glad Hver Julekveld, Jingle Bells and Now Let Every Tongue Adore Thee.

Join the PHS Band for an entertaining evening December 14—you might win a prize! The Band Boosters will provide refreshments afterwards.

Cub Pack 213 news

by Katherine Holman

Pack 213 met on November 23, and many awards earned over the past few months were given out. Service segments for contributing food and/or clothing to the November drive were awarded to: Cody Goodrum, James Brown, Brett Letellier, Julian Aprile, Michael Fultz, Trip Sharp, Bobby Vandall, Earl Vandall, Jared Beal, James Otto, Phillip Marr, Chris Ennis, Max Sowers, Kyle Behlen, and all of Den 3.

Also awarded were sports loops and pins to Michael Fultz, Randy Lewis and

Shawn Holman. A Teepee segment for a father/son overnigher went to Scott Cameron. Field trip awards for a father/son football game and Glencove Hotel went to Zachary Folden, Joshua Krasko, Scott Hoeker, BJ Reynolds, David Ross, Jeremy Nimrick, Keith Jones, Nathan Mark, Max Sowers. Pack summertime activities awards went to Julian Aprile, Brandon Marshall, Cory Grimm, Zachary Folden, Joshua Krasko, James Otto, Russ Williams, Falcon Ward, Bobby Vandall, David Ross, Max Sowers, Nathan Mark, Kyle Behlen, Scott Cameron, Jared Beal, Travis Oro, Ben Miller.

Webelos were also presented with awards... Julian April received Artist, Naturalist, Geologist, Forester, Scientist, Sportsman; Scott Cameron, Bobby Vandall, Earl Vandall received Aquanaut; Craig Jackson, Cory Grimm received Sportsman, and Chris Badger - Athlete.

The Pack also welcomed new Bobcats Anthony Balahueman, Shawn Holman, Randy Lewis, Kenny Carlson, Colin Churchward, Chris Ennis, Willard West, and a new den from Minter Elementary comprising Jake Johnson, John Wilner and Jared Linder.

News from the Tiger Cubs is that they visited Minter Fish Hatchery on November 18, and will be visiting a local nursing home on December 5. They will join the pack on December 10 for the Christmas Party.

Finally, all boys in the Pack will be carolling to the Senior Society at the Civic Center after school on Thursday, December 10.

RP NEWS Classified Ads sell!
884-4699



Our 12.9% APR Classic VISA isn't something to keep you in the dark about . . .

. . . Neither is the fact that you can join Tacoma Telco Credit Union.

Unlike most credit unions, you don't have to work for a specific company to join Tacoma Telco Credit Union. Our community charter allows us to serve Peninsula area residents and employees.

That means you can take advantage of our money-saving Classic VISA. There's no annual fee the first year and you'll receive \$250,000 in free travel insurance with your card.

Why not look at banking in a whole new light. Tacoma Telco Credit Union with two convenient branches to serve you.



TACOMA TELCO CREDIT UNION

GIG HARBOR
5299 PT. FOSDICK DR. N.W.
851-9981
(across from Dairy Queen)

KEY CENTER
8013 KEY PENINSULA HWY N
884-9266
(in KC Corral)



LAKEBAY LUMBER

Minter Village

BEST SELECTION OF WOOD STOVES EVER!

TRAILBLAZER

Solid Fuel Stoves

- HI-EFFICIENCY AIRTIGHT DESIGN
- HEAVY STEEL PLATE CONSTRUCTION
- GRAVITY LOCK INSULATED DOORS
- COMPUTER BUILT EFFICIENCY
- PRE-HEATING AIR CHAMBERS
- MEETS U.L. ULC & ICBO SPECS.
- CERTIFIED FOR ALL SOLID FUELS
- STAINLESS STEEL LINED DOORS
- FIVE YEAR GUARANTEE PROGRAM
- FIRE BRICK LINED AND MORE



Wet or dry applied roof repair mastic in convenient cartridges \$1.39 ea.

Vermont American
15% off on ALL offer good thru Dec. 26, 1987

ROUTER BITS in stock

Circular Saw Blades
7-1/4 Smooth Cut Combination 40 Tooth Carbide
\$19.99 ea.

Model T-55

ARROW
ALL PURPOSE STAPLE GUN \$12.99

STOVE PIPE
Large Selection
8" pipe reducers
8" pipe increasers
On Hand
Matte Black Pipe
6"x48" \$7.99 ea.
8"x24" \$3.99 ea.

SKIL

Auto Scroll Jigsaw

STANLEY

Stanley Nail Set 58-230 1/21, 2/32, 3/32 \$3.99 a set	Stanley 99 UTILITY KNIFE 3 pos. blade \$3.99 ea.	Stanley SURFORM POCKET PLANE 21-399 \$3.99 ea.
--	---	---

RAYO VAC
Heavy Duty Batteries
6 pack "D" cells
\$2.99

Quality Jigsaw with Auto or Manual Scroll action. Handles a wide variety of materials, wood, plastic, or metal. Blade locks at 0°, 45°, 180° or 270°.

- 1/2 H.P., 3.0 Amp.
- Variable speed 0-3,200 SPM with locking trigger
- Front assist knob for added control
- Built in blade and wrench storage
- 0-45° foot tilts left or right

ONLY \$40.99 MODEL 4355-02
Reg. \$44.99

25 FT. Power Lock Tape \$8.99

Vaughn 505M Framing Hammer 24 oz. \$17.99

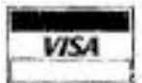
TARPS
18 x 24
\$18.99

SKIL
POWER TOOLS

Reg. \$59.99
SALE \$54.99
Rebate 5.00
\$49.99

\$5.00 CASH
Refund Offer

SKILSAW
7 1/8" blade
\$250



OPEN:
7:00am-5:30pm Mon.-Fri.
8:00am-5pm Sat.
10:00am-3:00 Sun.



Let Us Bid Your Blue Prints

857-7550

Highway 302 between Elgin-Clifton Road and 134 Ave.

Wauna/Minter - Peninsula North



Considering a Park.... A study committee of (left to right) Cherie Mastro, 1987 Key Peninsula Business Association President; Seventh District Pierce County Councilman Paul Cyr; Pierce County Senior Planner Robert Patton, and Wendy Wakeling of Superior Signs(Gig Harbor) took a moment recently to study plans for a park area under consideration at the western end of the Purdy Spit.
 KP NEWS photo by Lee Siles.

December 15. Prizes will be awarded on Saturday, December 19, at about 11 am at the Burley Christmas party. Everyone is invited. Prizes will be a \$35 cash Grand Prize; a \$25 gift certificate from Cenex Supply for the best decorations in the lighted division; a \$25 gift certificate from Burley Store for the best display in the unlighted division, and a \$25 gift certificate from Burley Galleria for "Judge's Choice."

More information can be obtained by calling Burley Galleria at 857-7479.

Purdy Christmas program

The Purdy Boosters Association will be holding their Annual Christmas Program on Saturday, December 12, in the parking area between the Bridgeway Market and Puget Sound National Bank. There will be prizes, singing by children's groups, and youngsters will be able to have their picture taken with Santa Claus.

Burley Christmas Party

The Burley Community Club is sponsoring a Christmas Party on Saturday, December 19, with everyone invited. It will be held at Burley Community Hall from 11 am to 1 pm, and there will be free photos with Santa Clause for children under 7 years of age; the charge for persons over seven will be \$1.00.

There will be cookies and other refreshments, general fellowship, and community caroling directed by Jeff Olive. Prizes for the Holiday Decorating contest in the Burley area will be awarded.

Those wishing more information may call 857-3215 and speak with Jeff Olive.

Business Briefs

Two ladies from the Peninsula area, Jeanne Crider and Sherry Wright, have started "Homestead Crafts," a retail shop carrying painting supplies, books, boards, and so on, at Jeanne Crider's home in the Minter Creek area off the County Line Road. They opened for classes in October and are far enough along now with their building to be open to the public. The new building has four 4x8-foot skylights and fourteen 4x4-foot windows for painting pleasure. They teach both oil and acrylic painting, in Tole, decorative, Rosemaling and canvas. Jeanne and Sherry will be glad to have you drop by at 15214 126th Avenue KPN, or you can call them at 857-3307.

Holiday decorating contest at Burley

The Burley Community Club (and Library Association) is sponsoring a Holiday Decorating Contest for homes in the Burley area this year. To be eligible to enter the contest, you must live within, or decorate a property within, the following boundaries: On the north - Pine Road; on the east - the Freeway (Hwy 16); on the south - the Pierce/Kitsap County Line and on the west - Sidney Road. There will be two categories of entries, lighted and unlighted, and all entries will be judged by Lakebay artist Li Martin on Tuesday,



Old-Fashioned Children's Christmas Faire

Saturday, December 5th
 11 a.m. - 4 p.m.

A fun-filled family day in the midst of the busy holiday season.

- MUSIC • CRAFTS • FOOD
- ACTIVITIES FOR CHILDREN THRU GRADE 6
- CANDLE DIPPING
- CONE BIRD FEEDERS
- SACHETS
- ORNAMENT DECORATING
- COOKIE KINGDOM
- WREATH MAKING
- QUALITY HANDMADE TOYS
- STORY TELLING
- PUPPET SHOW
- HEARTY FOOD
- FRESH FRUIT
- BAKE SALE
- AND MORE

SAINT NICHOLAS WILL VISIT THE CHILDREN AT 1:30 P.M.

MAGICAL STRINGS

AT THE MORNING STAR
 WALDORF SCHOOL,
 THE WOODS
 GIG HARBOR — LOCATED
 DIRECTLY OFF HIGHWAY 16
 FOR MORE INFORMATION
 CALL: 851-7827



TIRE &

**BATTERIES · SHOCKS
 FRONT END ALIGNMENT
 EXHAUST SYSTEM REPAIR
 FULL TIME MECHANICS**

CAR CARE SERVICE CALL THE PRO'S

851-4606

13712 S.R. 302
 GIG HARBOR, WA. 98335

We Now Accept Mobil Credit Cards
 Studs are legal after November 1st.
COMPLETE SERVICE
 MAJOR & MINOR TUNE-UPS
 "DOWN TO EARTH PRICES"



Obituaries

It is with deep regret we report the passing of our Peninsula friends and neighbors

Imogene B. Lorenz, 81, of Lakebay, died on November 21. She is survived by her husband, Gilbert, of the home, two daughters, two brothers, six grandchildren, and four great-grandchildren.

The family has requested that no services be held. Remembrances may be made to the Key Peninsula Health Center in Key Center. Arrangements were made by Haven of Rest in Gig Harbor.

Talietha Naomi-Lee Bushnell, infant daughter of Tom and Sherry Bushnell of Longbranch, died on November 20 at the Children's Orthopedic Hospital in Seattle. She was three months old. She is survived by two brothers, her maternal and paternal grandparents, four great-grandparents, and several aunts, uncles and cousins. A memorial service was held on Tuesday, November 24.

Thor Feeve, 73, of Vaughn, died on November 25. He is survived by his wife Lois, a son and a daughter, a sister and four grandchildren. No services will be held. Memorials may go to the Shell Knob Methodist Church or the American Cancer Society. Arrangements were by Haven of Rest, Gig Harbor.

Final election figures

The Pierce County Auditors office released final figures on the November 3 election last week, and the previous election results stood essentially unchanged on local issues after absentee ballots were counted.

On races of most importance to the Key Peninsula area the official vote figures were - ("W" indicates winning candidate or issue) - Peninsula School Board, District 3: Diane Olson 3332 (W), Dennis Freeman 1586; District 4, Dave Morris (W) 2675, Joen Wolfrom 2384; District 5, Pete Sabin (W) 2982, John Bozich 2208. (In District 1, Keith Stiles was unopposed.)

In the contest for Fire Commissioner, District 16, the vote was Hugh McMillan (W) 999, Gayle Armstrong 604. For the KP Park Board the count was Avon Gay (W) 737, Max Marlow 664 for Position 1, and Daphne Daus and Mike Kent were unopposed. The KP Park Levy received 893 "Yes" votes, which was 50.3% of the total, while there were 883 "No" votes. (A 60% "Yes" vote was required for passage.) Propositions for Charter Amendments Nos. 1 and 9 failed by counts of 50,554 to 19,845, and 42,163 to 23,030 respectively. Only Amendment Proposition 5, requiring certain competitive bids for certain items of county contracts, passed.





MANNA PRO CORPORATION

A.T.E.
FEED STORE
Key Center
Quality Feed



MANNA PRO CORPORATION

DECEMBER
SPECIAL

Wild Bird Seed
while supply lasts
20# \$4.99 10# \$2.75



Egg Maker Pellets
80# bag **\$9.95**
Poultry Feed

Mon.-Fri.
10:00-5:30
Sat. 10-5

884-3447



COLONY



REALTOR®

**K.C. CORRAL,
KEY CENTER**
884-3304

Real Estate, Inc.

Most of our listings have sold! We have had a busy Fall and need more listings!

We are located locally in Key Center in the K.C. Corral shopping center. Any of our agents will be happy to assist you, with your real estate needs. Interest rates seem to be dropping again and if you are thinking of selling or buying, now is the time. No need to drive to Gig Harbor when any of our Agents listed below, are ready, willing, and able to help you.
We are a member of MLS, and The Tacoma-Pierce County Board of Realtors and also provide FREE Notary Service.

Chuck Hayward, 884-3864
Richard Raschle, 884-3798

Joyce Tovey, 884-3878
John Potts, 884-4220

Belfair Flea Market

in the heart of Belfair next to
Thriftway

Open Saturday 9-5
Sunday 10-5

Many articles for Christmas, collectibles,
glassware, books, and Watkins.

At the New and Used Belfair Furniture, next to
Belfair Flea Market:
Hide-a-beds, Sofa Tables, beautiful glass-top End
and Coffee Tables, Drop-leaf and Dining Room
sets, and furniture for the nursery. **898-2818**

TRANSMISSION TROUBLES?

Call
Gig Harbor

Automatic Transmission Service

14610 Purdy Dr. NW, Gig Harbor (Purdy)


Honesty • Integrity • Quality • Free Estimates
• Free Road Tests

Transmission Specialist since 1955
Foreign and Domestic

857-2883










NEED A CAR OR TRUCK?

Little or no credit? Low on Cash?
I have several vehicles that may meet your needs. You could drive today.

Call **KARL DAVIES** at Dick
Boyles Chevrolet. Call 851-9931
Ask for **KARL**

Key Peninsula Civic Center Events DECEMBER 1987

Sunday	Monday	Tuesday	Wednesday	Thursday	Friday	Saturday
		1 Preschool 9:15-11:30am Evergreen School, 9:30 Tops, 6-7 pm Aerobics, 6-7 pm Karate 7-9 pm KPAAs Board Mtg. 7:30	2 Preschool, 9:15-11:30 Aerobics, 9:10 am Rocky Bay, 12:30 Fun Night 7 pm Explorer Post 213	3 Preschool, 9:15-11:30 Seniors, 11-4 Aerobics, 6-7 pm Karate 7-9 pm Teen NA 7:30-9 pm	4 Aerobics, 9-10am Rocky Bay, 12:30 Orange, 6-10 pm Skating 6-7:45 pm 8-9:30 pm	5 PAA
6	7 Aerobics 9-10 am Senior Bd. Meeting Rocky Bay VFW & Aux. 8-10 pm	8 Preschool Evergreen School Tops Aerobics Karate KPCG Exec. Board, 7:30	9 Aerobics Preschool Rocky Bay Fun Night Explorer Post Park Board 7:30 pm	10 Preschool Seniors Cub Scouts, 12:30 KPCG Board, Dinner Aerobics Karate Teen NA	11 Aerobics Rocky Bay Skating 	12 Twilite Dance Club 6pm-1am
13 Aerobics Rocky Bay	14	15 Evergreen School Tops Aerobics Karate	16 Aerobics Preschool Rocky Bay Fun Night Explorer Post Happy Chanukah	17 Preschool Seniors Aerobics Karate Teen NA Coquettes, 4:30-11pm	18 Skating 	19
20 Rocky Bay	21	22	23 No Fun Night	24 No Cub Scouts	25 No Skating 	26
27 Rocky Bay	28	29	30 No Fun Night	31 New Year's Eve Dance	Get your New Year's Eve Dance Tickets NOW!	

Christmas Gift Ideas from Sylvia's

- Shampoos
- Conditioners
- Earrings
- Curling Irons
- Blow Dryers
- Hand Lotion
- Brushes
- Mousse
- Nail Polish

- Beauty Bars
- Hair Spray
- Rain Hats
- Bubble Bath
- Gift Certificates for:
Tanning Bed Sessions
Permanent
Hair Cut
Color

Sylvia's Styling & Tanning Salon



K.C. Corral

In Beautiful Downtown Key Center
884-2479 Call For Your Appointment Today
Thursday Evenings by Appointment



DECEMBER TANNING

1 Visit \$3.00 10 Visits \$27.50
20 Visits \$50.00 30 Visits \$67.50
First time Guests - 3 Visits for \$8.25

Head for the Holidays
with

Style

Quality
Perms
\$32.00



MERRY CHRISTMAS

To All Of You From All Of Us.