

BOX HOLDER

# KEY PENINSULA NEWS

NON-PROFIT ORG.  
U.S. POSTAGE  
PAID  
PERMIT NO. 2  
VAUGHN, WA 98394

## YES EMS

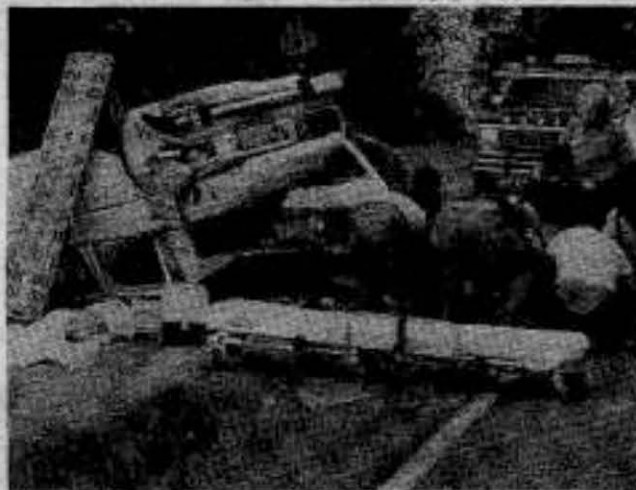
## YES LEVY

Good News From Wauna to Longbranch

Circulation 4700

Published by Key Peninsula Civic Center

November 1985 Volume XIII Issue 11



### Vote On "YES" EMS

As anyone who has ever had need of the superb ambulance and Emergency Medical Service (EMS) offered by the Key Peninsula Fire Department will attest, there is no better EMS anywhere on this planet.

In order for that service to continue at its present high standards, we need 907 Key Peninsula voters to go to the polls on Tuesday, November 5, and vote YES for Emergency Medical Services.

### "Yes" Does Not Increase Your Taxes

This is not a new tax. Your taxes will not be increased to support this measure. This is to continue the existing provision of funds to

*Continued on Page 4*

### Reno Reno Reno

Saturday Nov. 2 -  
4 pm to Midnight

Another afternoon and evening of fun and games is being sponsored by the Key Peninsula Civic Center. Come one and all - this is your chance to break the bank at Monte Civic Center. It may not be the Riviera but its no less fun so come and play and bring a friend.

There will be 21, dice games, Bingo - surely there will be a game to suit your fancy! If not come and eat the good food that will be served. No need to cook dinner on this night of nights! Throw your apron out the window, put on your glad rags and toddle off to the Civic Center.

## VOTE YES LEVY

On Nov. 5 we will have an exceedingly important election. Its outcome will determine the course the Volunteer Park and the Civic Center will take in the future. In the interest of helping voters to evaluate the issues, we have asked Jim Penfield to answer the four most frequently asked questions.



### Everything You Always Wanted to Know

1. Why is a levy needed when three have failed and the facilities are still operating?

Volunteer Field has been maintained by renting it to out-of-area teams for tournaments, but there's nothing left over to support programs for district residents and, in fact, we residents have been greatly limited in our use of the facilities by the necessity of renting.

The Civic Center has continued to operate successfully but only by raising user fees to a level which has forced some local groups to withdraw. It has also been necessary to lean on volunteer efforts with an intensity which is not sustainable.

2. Does the District have other problems?

Yes, but they are well on the way to solution. The financial stringency has provoked dissension and personality clashes among the three district organizations, the Park Board, KPAA and KPCC. In July three new commissioners were elected, all of them former Board chairmen in the early, successful developmental period of the District. The KPAA is being reorganized. A very successful Summer Fun Days program was organized at Volunteer Field in the late summer. The atmosphere is now one of active cooperation and constructive planning.

*Continued on Page 6*

### KPCC Board Elections Henschell and Loy Top Ticket

#### Participate on Your Board

On November 14, at 7:30pm, the Key Peninsula Civic Center will be holding it's annual election of officers. The positions of President and Vice-president and board representatives for Position #1 are up for election. All are a 2 year term. The public is welcome and encouraged to attend and to vote at this meeting.

Running for the office of President is Vicki Henschel. Dale Loy is running for Vice President. Nominations for these offices will be taken up thru election time and if anyone is interested in running please contact one of the following nominating committee persons; Eleanor Stock, Claudia Loy or Maureen Taylor.

The Key Peninsula Civic Center Board consists of 16 areas from Wauna to Longbranch with 2 board members from each area. Being a representative involves attending a monthly meeting which is the second Thursday of every month at 7:30pm at the Center. And also, we hope, to help in some of the fund raising events sponsored by the Center. The nominating committee would really like to hear from any community resident who would like to be involved in the decision making process. Please contact Claudia Loy 884-3937, Eleanor Stock 884-3739 or Maureen Taylor 884-9226 if you have any questions or comments.





POST OFFICE BOX 3, VAUGHN, WA.  
PHONE - 884-3456

PUBLISHER:  
KEY PENINSULA CIVIC CENTER

EDITOR:  
SALLY KRUGER - 884-4191

BUSINESS MANAGERS:  
TONY AND BARBARA TROTTER -  
884-4703

THE OPINIONS EXPRESSED BY INDIVIDUAL COLUMNISTS AND WRITERS OF LETTERS TO THE EDITOR ARE THEIR OWN. THEY DO NOT NECESSARILY REFLECT THE VIEWS OF THE KEY PENINSULA CIVIC CENTER OR THE STAFF.

PRODUCTION:  
PAULINE FINN           CLAUDIA LOY  
MARION WAGNER       BOB INGERSOL  
RENEE BASH           LEE STILES  
SALLY CORNMAN

CONTRIBUTORS:  
HUGH McMILLAN       CECIL PAUL  
JANICE McMILLAN     MARGARET PAUL  
KEITH STILES         TERRY LEGG  
ELAINE PORCH        RUSS BECKIM  
STELLA RUTHERFORD

ADVERTISING:  
TONY AND BARBARA TROTTER -  
884-3456 - 884-4703  
SPECIAL THANKS to Mrs. Jackie Higbee from the business staff  
ADVERTISING RATES

Single Business Card.....	9.00
Double Business Card.....	17.00
Triple Business Card.....	25.00
1/4 Page.....	35.00
1/2 Page.....	56.00
3/4 Page.....	81.00
Full Page.....	104.00
Classifieds per word.....	.12

All advertisement not brought in camera ready will be charged a set-up fee of 25% of the cost of the ad.

It has been a long time since I have taken any time to engage in any activities of the Park District or its facilities. However, this seems an appropriate time to enter the community arena to inform the residents of the Key Peninsula about the forthcoming levy election.

One Sunday in the summer of 1977, I went to Volunteer Park early in the morning to help clear rocks and debris off the fields. It was about 7 am when I arrived and Rogner (Rog) Johnson, long time resident and well known pioneer of the area, was already at work with his dozer. He stopped his machine and we talked for awhile.

I asked Rog what he was doing on this beautiful Sunday morning, when he could be out in his boat fishing or putting in his garden or half a dozen other places. His reply was, "I'm doing this for the kids."

That spirit has been present in many notable peninsula citizens. It is a pride that has been developed since the earliest settlers inhabited this wilderness area. Peninsula people have always helped each other. They have provided the facilities necessary to keep up with the needs of a growing population.

Throughout the past years, certain problems have developed. Numerous people have been hurt. Supporters have been alienated and a lack of support for the Park District has resulted.

However, I feel that now is the time for every voter to take a positive look at the accomplishments which have resulted when citizens know the facts. Here are some of the reasons for supporting the upcoming levy; (1) The Key Peninsula Civic Center is one of the oldest and one of the only community centers left in the entire State of Washington. Next year it will celebrate its 80th birthday. (2) Volunteer Park had over 300 people participate in its creation. This made the children and parents less dependent on other recreational facilities which meant travelling 30 miles to play a game of baseball, football soccer. (3) The Civic Center has served the needs of people from 4 to 94 with a wide variety of organizations and activities.

Although nothing is perfect, we should try to keep in mind that we cannot sit around telling each other how great we are and the things we've done have been magnificent! We still need to open our facilities to young people who are not on a team. We need to extend an invitation to the adults and elderly to use the Park facilities for playing chess, checkers and cards. We need to let everyone have the opportunity to use these facilities at their convenience and for more companionship.

Our Park Board and the Civic Center Board need to provide information to the citizens regarding

their financial needs and where the previous levy monies have been spent. We need to know what improvements have been provided and what will be maintained and operated in the future for the people of this community.

If the residents of the Key Peninsula are to experience the pride of ownership in their Park and Recreation District, each voter that goes to the polls on Nov. 5, must approve this levy "for the Kids, the adults, the elderly, for themselves and each other."

We need to revive the comradeship that many of us have experienced in the past. Taxpayers need to know that their monies are being used conscientiously. Fund raising activities are needed that will raise monies for extra needs and bring us together not as an impersonal community, but as human beings sharing and understanding each other with compassion.

We the people, are the landlords of the Park District. If we have made the wrong decisions, now is the time to correct them. As an old railroad engineer once said, "Even if you are on the right track, you'll get run over if you just sit there."

Bob Schottland

Past President of the  
Civic Center and Park Board

This letter is being sent to extend my appreciation for the article in the October, 1985 edition of the Key Peninsula News regarding Purdy Corrections Center for Women's invitation to the Key Peninsula Lions Club for a tour of the facility and breakfast with special focus on the Pet-Partnership Program.

Thank you again for your continued efforts in providing positive and informative news to the community.

Sincerely,  
Sue Ellen Clark  
Superintendent, Department of Corrections  
Purdy Treatment Center

And a special thanks to Keith Stiles for submitting the article. The Editor

As Treasurer of Key Peninsula Civic Center Association, I am asked over and over what we do with the money we make on our fund-raisers. I would like you all to know that if we depended on rents to keep the doors open, they would have been closed long ago. Rents for August totalled only \$883.00, but expenses for heat, light, phone, caretaking, and routine maintenance totalled over \$4900.00. In September the rents were only \$602.00 while maintenance expenses were \$2200.00. Proceeds from the fund-raisers make up the difference, plus they help to purchase equipment,  
*Continued on Page 7*

## Letters To The Editor

thanks so much for running our article in last month's newsletter. We appreciate the publicity.

Thanks again,  
All the moms and kids at  
the Longbranch Cooperative  
Preschool



# CIVIC CENTER LISTS PATRONS

## PATRONAGE PROGRAM

The Patronage Program adopted by the Civic Center Association to help finance the Civic Center, is proving successful. Under this program, citizens, businesses, or community groups who donate \$25.00 or more toward the Civic Center will be considered patrons and will be listed each month for a year in the Key Peninsula News.

Contributors for the patronage program are as follows:

### 1985

#### JANUARY

Norm, Lisa, Colin McLoughlin  
Ray & Frances Durward  
Edward & Marian Magner  
Charlie & Renie Bash  
Active Construction  
Key Peninsula Septic Services, Inc.  
Dick Noble  
Sakura Nursery  
J.C. Lujan Construction  
Key Center Trading Post  
Duane & Margo Fleming  
Beulah Kupka  
Hugh & Janice McMillan  
The Garden Shoppe  
Charboneau Construction, Inc.  
Chiropractic Spinal Care  
Jim & Dianna Sammons  
Classic Fashions  
D.J. Tire Service  
Burley Feed & Farm Supply

#### FEBRUARY

Collins Chiropractic Center  
Maxine Robins  
Lakebay Woodworks (John Carlson)  
Walt's Fine Foods  
Key Peninsula Lions Club  
Harold Meyer Drug  
Stutz Fuel Oil  
Key Center Tavern  
Gig Harbor National Bank  
Elsie Olson  
Roy K. & Ruth Madsen  
Agnes Whitmore  
Jim & Georgia Penfield  
Bill Heine  
Lakebay Lumber  
Zoe Rae Sanders  
Gene & Richard Scott  
Arnold & Opal Vital  
Key Peninsula Duplicate Bridge

#### MARCH

Key Peninsula Lutheran Church  
Cecil & Margaret Paul  
John & Silvia Larson  
Key Peninsula Typewriter  
Harold Moreland, CPA  
Blundell's Longbranch  
Chowder House  
Longbranch Automotive Center  
Colony Real Estate, Inc.  
Puget Sound National Bank  
(Purdy Branch)

#### APRIL

Key Peninsula Health Center  
(Angel Guild Thrift Shop)  
Rena & Margaret Spencer  
Key Peninsula Senior Society  
Henry & Eleanor Stock  
Bill & Virginia Mojean  
Jim & Colleen Fassler  
Richard & Amy Dvorak  
Key Center National Auto Parts  
Bernard & Sharon Collins  
Carlos & Margaret Keasler  
Valley Supply Co-Op  
Bob & Barb Gilliam  
Sylvia's Stashes & Lashes  
The Country Mouse  
Movie Magic  
China Palace Restaurant  
Puget Sound National Bank (Gig Harbor)  
Donald & Helen Wolniewicz  
Ralph & Hazel Kingsbury  
Joe Wolniewicz

#### MAY

Earl and Mary Knapp  
E.W. (Ned) Richards  
Key Western Building Center  
Charles and Rocena Lane  
Jerry and Marjory Hurley  
Bill and Reitha Muse  
Burton Machined Products  
Warren and Ruth Watt  
Vaughn Garden Club  
Bea Pruski

#### JUNE

C.W. & Muriel Burhans  
Ivar & Mary Highberg  
Hank & Pat Clifford  
C.W. & Barbara Johnson  
Col. Ret. Chester & Muriel Dadisman  
Anne Marie & Horace Kanno

#### JULY

William & Evelyn Evans  
Barbara & C.W. Johnson  
Robert L. & Betty L. Beal  
The Peninsula Gateway

#### AUGUST

Bahafs of Pierce County Peninsula  
Joseph and Almeda House  
William and Virginia Whitten  
Judy Wilson  
Nathalia (Nat) Knox  
Home Port Restaurant and Lounge  
Chet's Lakebay Chevron

#### SEPTEMBER

#### OCTOBER

Harold & Billie McKinney  
Paul's Towing  
Elmer Skahan  
Erv and Alice Craig

#### NOVEMBER

Marilyn & John Bozich  
Ron & Dulcie Schillinger  
James A. & Kaye Ailotta  
Robert & Marilyn Vogeler

### 1984

#### DECEMBER

Edward & Glenrae Hoffman

#### In Memoriam

Rogner Johnson	Julius Stock
William Stock	Merle Kupka
Oliver Whitmore	David Dadisman

Contributions may be mailed to the Patronage Program, c/o Newsletter, P. O. Box 3, Vaughn, Washington 98394.

**CAST YOUR VOTE**  
**YOUR**  
tuesday  
**NOV. 5**  
**YES FOR PARKS**

- Holiday Ideas -  
Centerpieces for your Thanksgiving Table  
Hand selected ornaments for your Christmas tree and special gift giving.

**SUNNYCREST** 884-3937  
KEY CENTER

**PUBLIC MEETING**  
Key Peninsula Civic Center  
Nov. 30th - 8:30 p.m.  
Anyone who has problems with the Telephone Company should attend.  
THIS AD PAID FOR BY PRIVATE CITIZENS.



Continued From Page 1

## EMS? YES!

support your Key Peninsula Fire Department's ambulance and EMS. The measure authorizes the Key Peninsula Fire District to continue to receive twenty five cents per \$1,000 evaluation on properties. For example, the cost to the tax payer on a \$50,000 property amounts to \$12.50 per year. The assessment runs for six years. This year, 1985, is the last of those six years. If we are to continue to receive the superb ambulance and EMS we are accustomed to, **THIS MEASURE MUST PASS.**

The Key Peninsula Fire Department is the most active Fire District in Pierce County owning and operating its own ambulances; most Districts make use of commercial ambulance services.

### Some Facts You Should Know

The public was invited to a seminar on October 16, at our Key Peninsula Fire Department's Headquarters' Station in Key Center for an explanation of expenditures and revenues as they pertain to maintenance and operations of equipment and facilities and training for EMS within our Fire District. If you were unable to attend and would like this information please call 884-2222 or 857-2291.

Some things you should know:

- a. In 1984, 72 percent of all calls were EMS related

- b. Our 1981 ambulance made over 10,000 miles of EMS travel in 1984 at 16 cents per mile; the rescue vehicle which accompanies most ambulance runs does so at 19 cents per mile; the 1976 ambulance costs 23 cents per mile. The operational cost for these three vehicles in 1984 was \$13,759.
- c. Because most emergency vehicles in the District are EMS equipped, the EMS share of insurance budget is \$7,704 per year
- d. Our total EMS income (levy funds, ambulance charges, donations, etc.) in 1984 was: \$102,811
- e. Our total cost for providing EMS was: \$126,121
- f. Our shortfall was: \$ 23,310
- g. We make up this difference by shifting funds from fire suppression allocations
- h. We charge a base rate of \$40.00 plus \$1.50 per mile for use of our ambulances; if we do not transport the patient, there is no charge
- i. If we must call in para-medical advanced life support assistance, our base rate must go up to \$90.00; mileage is the same as above
- j. Commercial ambulance services charge a base rate of from \$140.00 to \$250.00 plus \$2.50 to \$6.00 per mile; whether or not the commercial ambulance service transports the patient, the above costs will be charged
- k. It costs us \$179.00 to train an EMT (Emergency Medical Technician); we have 24 EMT's, and are currently conducting training of 17 new EMT's
- l. It costs us \$102.00 to train a First Responder (advanced first aid); we have 19 first responders
- m. In 1984, 1,431 hours were expended training 65 personnel in EMS; that breaks down to an average of 22.7 hours per firefighter.

### Needs Different

Some people question why, when they pay taxes for EMS, they must also pay the figures cited in "h" above, for use of the service. We hope the figures noted in "d" - "f" above, clarify this point. It might also help those

"for your real estate needs"  
**SHOREWOOD REAL ESTATE, INC.**  
 Professional Service Since 1956

Call for a **FREE MARKET APPRAISAL**  
 of your home or property!

Lynn Benson 884-2419  
 Russ Beckim 884-4634  
 OFFICE 858-9933



who pose this question to know that other Fire Districts collect the same 25 cents per \$1,000 property evaluation but provide no ambulance service of their own, they must call in the much more expensive commercial ambulance services. The Emergency Medical Service provided by the Key Peninsula Fire Department is not normally provided by other Districts. We provide this exemplary service because our needs are unlike those of other Districts. It is the judgement of the management and personnel of our Fire District that we must have this service on Key Peninsula. Our response time record is second to none because we are here. Medical emergencies must be handled within the shortest possible time-frame. Commercial ambulance services are not only considerably more costly, they are located at great distances from the scene of emergencies on Key Peninsula and simply could not meet acceptable time requirements.

### Good Reputation Among Fire Districts.

Our Key Peninsula Fire Department has an extremely good reputation among fire districts throughout the State. We have been singled out by the Pierce County EMS to be the pilot Department county-wide authorized to train and certify EMT's in the use of the defibrillator. We are one of very few Districts whose EMT's are authorized to provide injections for anaphylactic shock.

In order for us to continue to provide this excellent EMS, we ask you to VOTE YES for continuance of the EMS levy on Tuesday, November 5.

# YES EMS

### To All Users of Private Alarm Companies

TO ALL USERS OF PRIVATE ALARM COMPANIES

We need to make an adjustment to be compatible with the 9-1-1 Alarm Reporting Phone System, now in effect.

It is important to advise the Alarm Company now serving you to call 588-5217 when reporting an alarm.

Your immediate attention to this matter will assist in the programming of your alarm system.

All articles submitted to this paper should be typed or legibly written on 9 X 11 paper and **DOUBLE SPACED.** They must be received by this office by the 15th of the month to insure their inclusion in the paper.

## COMING DEC. 7

Annual  
**Key Peninsula  
 Civic Center**

**Arts &  
 Crafts Fair**

Hours 9:30 a.m. to 4:30 p.m.

Held at Key Peninsula  
 Civic Center  
 Vaughn, WA



To reserve a  
 Space Call  
**884-3738**  
**275-2407** or  
**884-2531**



# RENO

# SAT.

## NIGHT



# COME PLAY

SPLURGE A LITTLE!

# BIG GAME NIGHT

HAVE FUN!!



IS  
EVERYBODY  
READY?

LUCKY YOU!  
DON'T  
MISS IT!!!  
**Win Big!**



*4pm to 12 midnight*

Key Peninsula Civic Center

Vaughn



Continued From Page 1

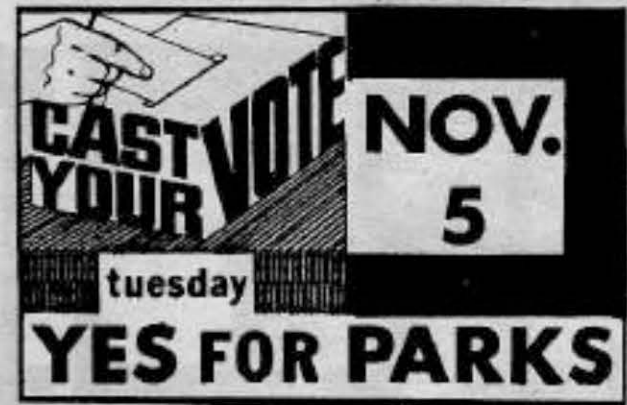
### Levy

3. What will the levy money be used for?

Almost 41 percent will go for salaries, wages and benefits; both Volunteer Field and the Civic Center need responsible caretakers. Additional labor beyond the capacities of volunteer work parties is occasionally needed, particularly for field maintenance. As we all know, liability insurance costs are escalating at a fantastic rate and 29 percent of the levy funds are budgeted to cover this item. Regular repair and maintenance of our two facilities will eat up a further 20 percent and the remaining 10 percent will go for auditing and other professional services, office supplies, election costs, etc. Any possible savings in these expenses will be devoted to helping with heating and utility costs, which are also heavy, particularly for the Civic Center. With a large percentage of continuing basic expenses taken care of by levy funds both facilities can lower their fees, and Volunteer Field can substantially cut down on renting to out-of-area users. Thus, availability of both facilities for all members of the community will be increased and fund-raiser proceeds will be more available for support of needed programs.

4. A year or two ago I voted against a Park levy because it was to be used to buy and develop more property, pave the Civic Center parking lot, etc. Are there still plans for such projects?

The Park Board assumes that one of the reasons that that levy was defeated is that the community does not feel expansion is needed at this time and that it wants the present facilities run on a truly economical basis. Funds now being asked for are sufficient only for "bare bones" support and, as stated above, will be used only for that. If groups in the community are interested in expansion or expensive capital improvements in existing facilities, the Park Board is always happy to consider specific suggestions and, if support for them appears strong, to put such projects on the ballot for decision by the district voters.



### Obituaries

WANDA VIVA ROSE

Services were held for Wanda Rose at HAVEN OF REST FUNERAL HOME, Wednesday, October 23, 1985, the Rev. Chuck Altig officiating.

Mrs. Rose was born in Fornam, Nebraska, September 28, 1902. She married Rollie Glen Rose in 1922 and moved to Vaughn in 1937. She has been living in the Auburn and Tacoma area since 1952. Mrs. Rose retired as cook for the Vaughn School and the Des Moines Retirement Center. She leaves four daughters and four sons, a sister, thirty-one grand children and thirty-one great grand-children.

Arrangements by Buckley-King.



## KEY PENINSULA FIRE DEPARTMENT

### Pierce County Fire District #16 COMMISSIONER

- 6 years Key Peninsula Fire Commissioner
- 19 yrs. Fire Dept. experience
- 14 yrs. managerial experience



- Member of State Fire Commissioners Association, Labor Negotiations Advisory Committee

- Dedicated to providing the best fire and emergency medical services for your tax dollar

**VOTE FOR**  
**ARTHUR FENTON**  
**FIRE COMMISSIONER**  
**TUES., NOV. 5, 1985**



- Antiques
- Collectibles
- Desirables

## A NEW SHOP IS OPEN

Explore five rooms full of gifts, crafts and antiques, featuring the work of many local artists and craftspersons. Enjoy unusual kitchen decor items.

Discover Sweetbriar & Friends and be pleasantly surprised.

8725 STATE ROAD 16  
 (Near Haven of Rest;  
 behind Connie Shick  
 Floor Covering)

CONSIGNMENTS  
 WELCOMED

851-5650





# Fire Protection District Wins Second Place in State Competition



CHIEF KANNO WORKS HARD TO MAINTAIN FIRE DEPT. EXCELLENCE

IT TAKES CARE AND PLANNING TO AVOID THIS! (Photo of training exercise)



At an awards banquet held at the Red Lion Inn, SeaTac, the Washington Fire Commissioners 37th Annual Conference awarded Pierce County Fire Protection District Number 16 second

Continued on Page 8

Continued From Page 2

### LETTERS TO THE EDITOR

provide for such things as painting the interior of the building, purchase of the new microwave oven now in the kitchen, the dishes you see being used at every function, etc.

We have carefully husbanded our funds for the past several years knowing if an M&O levy failed, additional expenses would fall in our laps and we would need every dime we could get just to keep the building insured. Our worst nightmare is coming true. The cost of insurance is skyrocketing just at the time when the Park Board is out of funds. You guessed it -- the Civic Center association is the one who will pay.

I wish everyone would attend our board meetings to see just how we do try to update the Center and at the same time keep funds available for day-to-day operation and stay prepared for the emergencies that arise.

Lenore Jameson

In writing about the early days of the Park Development, there should be credit given to the local merchants, namely Walt's Fine Foods, and Key Western Building Center who were always generous in their giving of supplies. Also tribute should be paid to the wives of the many volunteers who supported their husband's efforts and tolerated the many hours

of labor they donated to the Park instead of working around the house. Also the many hours they themselves donated in various ways.

In attempting to give credit to the 'soldiers' of the "General's" troops, there is a sensitive, hazardous chance of omitting the names of some, perhaps many. A list of all volunteers would read like a miniature telephone directory. They, the volunteers, know who they are, their friends know who they are, their neighbors know who they are. Their rewards come not from seeing their names in print, but by the inner satisfaction and happy feeling they derive by knowing that by their participation they contributed something toward the construction of a permanent facility which will serve the entire community for many, many years. The events are recorded using the best of my first-hand experience. Many names may have been omitted because of my lack of personal contact. There was absolutely no intention to do so.

Roy Madsen

### Land Use Meeting

The Citizens Advisory Board will meet at the Key Center Library, Wednesday, November 6, at 7 pm to discuss forest designations, land-use designations at Purdy, and shoreline designations for the Key Peninsula and Fox Island.

# PLEASE JOIN US TO ENJOY THE THIRD ANNUAL

# ORIGINAL



Eggs, Sausage,  
**LIONS' PANCAKES,**  
Fruit, Juice, Milk,  
Coffee

ALL YOU CAN EAT!

SUNDAY, DECEMBER 1

9:00 am - 2:00 pm

KEY PENINSULA  
CIVIC CENTER

# KEY PENINSULA

# LIONS' CLUB

# PANCAKE

# BREAKFAST



ADULTS: \$3.50

6 to 12 & SENIORS: \$1.75

UNDER 6: FREE



# KPFD EMS Firefighters Training With Jaws of Life



A Key Peninsula Firefighter/EMT practices "opening a can" with the Holmatro Rescue Tool. Purchase of this version of the "Jaws of Life"-type device was made possible by contributions from the Key Peninsula Angel Guild, the Key Peninsula Firefighters' Association, and many citizens of Key Peninsula.

Remember...You are never too young to start embellishing the past.



## LAKEBAY ROOFING

SERVING

### PIERCE, KITSAP, KING & MASON COUNTIES

RESIDENTIAL  
RE-ROOFING  
NEW CONSTRUCTION

24-Hour  
Emergency  
Service

SHAKE • HOT MOP • TILE  
COMPOSITION • CEDAR SHINGLES

## FREE ESTIMATES 884-2186

**TOM ROLFZEN — Owner**  
WN. ST. CONSTR. REG. LAKE BR\* 157KF

## Fire Department Purchases New Life Saving Tool With Community Donations

The Key Peninsula Fire Department is training firefighters in use of the Holmatro Rescue Tool which was acquired with contributions made to the Key Peninsula Firefighters' Association during our annual Fourth of July fireworks and equipment fund drive. This extrication device, more commonly known as the "Jaws of Life" (a trade name of another manufacturer) will give our Fire Department's Emergency Medical Service (EMS) greatly improved ability to gain swift access to victims trapped in accident-smashed vehicles.

The Fire Department is particularly grateful to the Key Peninsula Angel Guild which contributed \$4,500, the Key Peninsula Firefighters' Association for \$1,500, our "anonymous" supporters for their contribution of \$1,000, and to such organizations as the Ashes, Key Peninsula Lion's Club, The Cootiettes, and many more community spirited organizations, and to all the wonderful people of the Key Peninsula community who made this purchase possible.

The Holmatro is one of five such devices subjected to exhaustive tests by the Department before final selection was made. The unit includes spreader (the "Jaws"), and a shear (for cutting through posts and other metal parts). The device will be carried on our rescue vehicle which responds to all EMS automobile accident scenes. All District EMS personnel will be trained in speedy, efficient use of the device.

Acquisition of the device will reduce time required to gain access to trapped victims by 1/2 to 1/3. Mostly importantly, it will no longer be necessary for our Fire Department to call for a similar device to be transported from the Gig Harbor Fire Department. That 15 to 20 minute lag period will no longer pertain.

The EMS-qualified firefighters of Key Peninsula thank all who helped. Many, many thanks!



MARIE BROWN  
CERTIFIED GRAPHOANALYST

*Personalities +*

HANDWRITING ANALYSIS  
PERSONALITY CONSULTANT

14621 HOLIDAY DRIVE, KPN  
GIG HARBOR, WA 98335 (206) 884-4305

## Fire

Continued From Page 7

place for excellence out of 411 fire districts in the state.

The award is based on training, number of EMS qualified personnel, efficiency, response time, administration, fire suppression ability, excellence of ambulance service and community involvement.

We are really proud of our fire department. They are hard working men and women from the top down to the last volunteer counted. We hope that the voters consider this on November 5.

## Health Center

By William F. Roes, M.D.

November is traditionally the month for Thanksgiving, and the staff and board of the Health Center would like to take this opportunity to thank the community for its support. Specifically we would like to include those who helped make our recent Health Fair a success. Many people contributed, some more than others, but special thanks go to Cindy Lundsen from the Cancer Society, Stan Rippon from the Lion's Club, Brownie Brawnsteiner from the Diabetes Association, Larry Procter who made up our charts and graphs, and Ross Bischoff who brought in some of his wonderful cider. Over 200 people visited the Center on Oct. 12, and 13 pints of blood were donated. Sixty-three people had their hearing tested, 48 underwent diabetes screening, and over 40 flu shots were given. Again thanks to all who helped in this community project.

Three other groups, the Key Peninsula Lion's Club, the Angel Guild and the Health Center Board of Directors also deserve mention at this time. These groups continue throughout the year to donate time, service, and money to the Center, and too often are taken for granted by the rest of us. A big thank you to them from the staff and the community for their continued support.

Finally, another note about the Respite Care Project. This is a project to help support the frail elderly stay in our community. Each Wednesday at 9:00 am they meet at the Center where crafts, programs, and activities are planned and presented for those elderly who otherwise have little opportunity for socialization. It also gives the caregiver a few hours a week to do those things that otherwise wouldn't get done. We feel strongly that this is beneficial for both the patient and the caregiver. If you are interested or think this could be beneficial to a friend or family member, call us at 884-9221. If transportation is a problem let us know and arrangements can be made.





### Around the Yard

by Tim Kezele

#### LANDSCAPING

#### TREE CARE

Start annual pruning and cleanup of fruit and ornamental trees; cut damaged wood, crossing branches, or rubbing branches. Cut away growth that is detracting from overall form of tree.

Also try to remove cankers or galls on trees. Burn the debris and disinfect saw blades with rubbing alcohol.

#### VEGIE

Add mulches and manures to your garden plots for losses made this past growing season. Plan out next year's garden(s), and remember to rotate crops especially potatoes and tomatoes.

#### PLANTING

Plant new trees and shrubs as weather permits. Also, transplanting can be done now. Remember to keep transplanted plant in same exposure as it came from. There is usually more foliage on most exposed sun side.

#### AROUND THE HOUSE

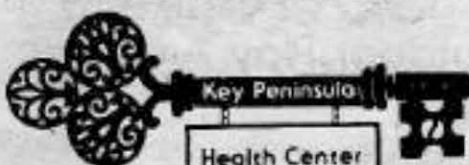
Make sure garden hoses are drained and put away. Protect faucets from freezing by wrapping. Also include stand pipes.

#### LAWNS

Apply fertilizer that includes moss control; look for ingredients listing ferrous amonia sulfate, or high iron. Use fertilizer according to manufacturer's directions. Rake out dead moss after application has taken effect. Add lime at the rate of 30 - 40 lbs. per 1,000 sq. ft.

#### OF INTEREST

For added gardening knowledge, join a garden club in your area.



**Key Peninsula Health Center**  
ADULT DAY CARE  
Respite Care Project  
Every Wednesday at 9:00 A.M.

# Spring Color begins This Fall



Now's the time to plant imported Dutch Bulbs for an EXPLOSION OF SPRING COLOR. Choose from our large variety of bulbs, such as tulips, daffodils, Hyacinth, Crocus, Iris and many more.

NOVEMBER BULB SPECIAL

25% off

ALL OUTDOOR BULBS SALE GOOD THRU END OF MONTH



Hint for a Spectacular Spring Show—

- Plant winter blooming pansies over your bulb beds, this gives you color now & a great combination in the spring.



## Sunnycrest's Christmas Open House

—November 28th & 29th—

The store will be filled with the sights, smells & sounds of Christmas

- Decorated and Lighted Trees •Wreaths •Ornaments •Complimentary cider, cookies & candy canes •Demonstrations on decorating wreaths, bow making, and creating garlands from your own trees •

WE HAVE A NICE SELECTION OF CHRISTMAS ORNAMENTS NOW AVAILABLE

Remember: We now have fresh flowers—Balloon Bouquets—Gifts—Dried Flower Supplies.

884-3937 • MONDAY-SAT 10-6 pm SUNDAY 11-4 pm



**SUNNYCREST**  
NURSERY & FLORAL



# Guardianship

by Jeffrey A. Robinson  
Attorney at Law

Many people believe that a guardianship only applies to children. This is not true. When an adult becomes incapable of caring for and managing his or her personal affairs, that person may properly become a subject of a guardianship action. Over the years, I have seen much confusion over the impact of guardianship and how it can be used to benefit the individual. Guardianship is a very serious step which deprives the individual (sometimes called the "ward") of almost all civil rights.

Before any action is taken, the first question to be asked is whether guardianship is necessary. To be a proper subject for guardianship, an interested person (friend or relative) must believe the subject is incompetent. Washington law defines incompetent as either "... (a) under the age of majority (18 years of age) or (b) incompetent by reason of mental illness, developmental disability, senility, habitual drunkenness, excessive use of drugs, or other mental incapacity ... and unable to either manage his property or care for himself, or both ..." Often seniors are told by well-meaning family or friends that they are senile or too ill to handle their personal affairs. If a senior disagrees and believes he is able to care for himself, he has the right to be

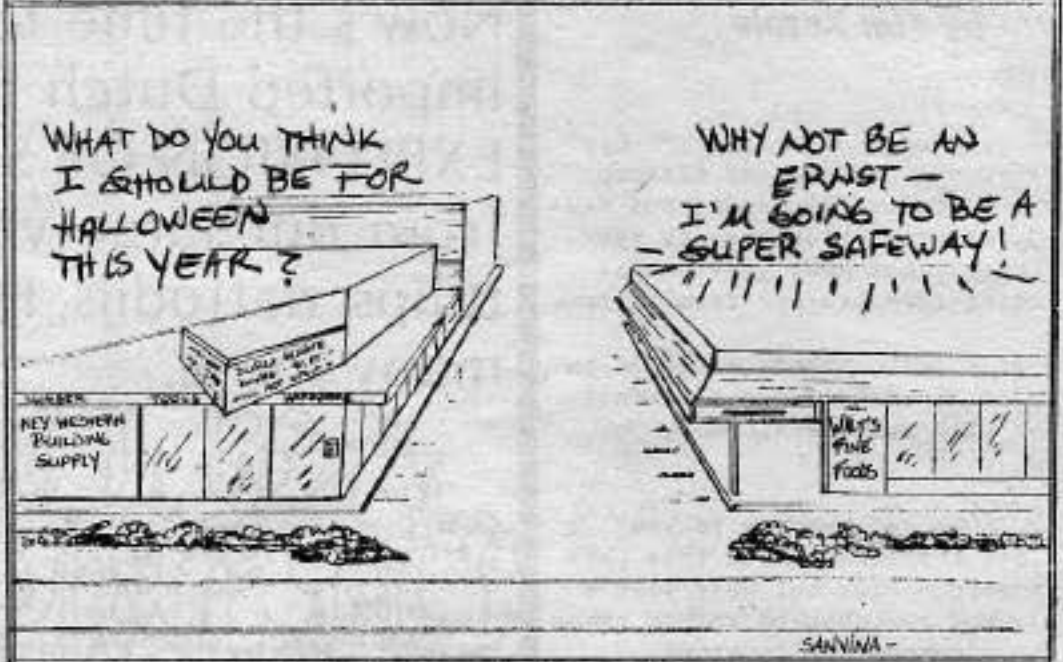
represented by an attorney.

The second question is what type of guardianship is required. There are two types of guardianships: full guardianship and limited guardianship. Each can cover both the person and his estate or only the person or his estate. Guardianship over the person is granted when the court has found the ward to be incompetent to care for himself or herself. The guardian then has the responsibility to provide support and maintenance. Thus, the guardian can control where the ward resides. Guardianship over the estate

*Continued on Page 15*

**CAST YOUR VOTE NOV. 5**  
tuesday  
**YES FOR PARKS**

KEY CENTER CORNER



The Log House Students & Dori Richards  
Invite you to  
Coffee, Tea & Cookies  
at our  
2nd Annual Open House  
Nov. 3, Sunday, 1 to 5 p.m.

Featuring:

The students and their own art work and a new collection of paintings of Greece by Dori — all exclusively palette knife.

Creating good art is great fun and something that you, too, can do. Come visit now so that when your busy schedule allows, you will know where to go for professional help. It is difficult to achieve your potential alone painting on your kitchen table. Everyone blossoms with knowledgeable guidance. Beginners especially welcomed!

We are a "working" studio (as opposed to an art or gift shop) and so, if necessary our formal business hours are limited. Sunday, Nov. 3rd is a good time to get acquainted.

Log House Studio  
807 - 206th Ave. Ct. KPN  
Lakebay, WA 98349  
884-4822

Go around Lakebay  
Post Office at Home  
on Herron Rd. for 2 1/2 mi.  
Follow signs.

# Country Corner Daycare Center 884-3244

HOURS: 6:30 a.m.-6:00 p.m.  
Monday-Friday

2 Yrs.-12 Yrs.  
Part-time/Full-time  
Enrollment



- Individual Attention •
- Snacks & Lunches Provided •
- Before & After School Supervision •
- Enclosed Outdoor Play Area •



Director  
Lisa Mowatt

State Licensed  
Lakebay



Continued From Page 14

is ordered when the court has determined the ward to be incompetent to manage his or her own affairs. In this case, the guardian has the responsibility of managing the ward's property.

A full guardianship takes complete control away from the individual, and the ward has no power to make any decisions which affect his or her life. This includes choosing a place to live, buying a dress, and writing a will, among other things. It can be seen that this is a very serious step.

A limited guardianship imposes specific limitations which the court finds necessary for the ward's protection and assistance. It does not remove any rights other than those specifically stated. So, the ward can have a limited guardianship over his estate involving only a single issue.

Clearly, a guardianship is not to be taken lightly. It removes the rights of an individual and an attorney should be consulted to answer questions.

### Park District Improves Value Of Your Property

By Russ Beckim

We are being urged to pass a levy for the Key Peninsula Park District which, if passed, will be used to support the Civic Center and Volunteer Park. This will be a levy on property and will therefore be shared by all the property-owners in the taxing district.

Is there any advantage to the property-owner in passing this levy? Is there any advantage to the property-owner in having the Civic Center and Volunteer Park?

At first glance, it might seem the answer is "No", because we cannot assign any monetary value accruing to the property-owner because of the two facilities. As a realtor and homeowner I am acutely aware of the value of the Park District properties whenever I show Key Peninsula property. People with young children are interested in the nearest school and consider its location part of the value of the property. Likewise, for people with children or young marrieds who are athletically inclined, the location of the nearest athletic field is a strong consideration in their choice of property. Others who want to make friends and become part of

the community will find the Civic Center and its activities a factor in their evaluation of the desirability of Peninsula property.

If we cannot assess a specific monetary value that the Park District properties add to our particular properties, we can say that they do add value in the same way that the schools and the fire department add value. We can also say that the presence of the park and Civic Center make properties more salable; that is, more desirable to the prospective buyer. So it is in your best interest as a property-owner, and in mine as a realtor and property-owner, that these two facilities should continue to serve the Key Peninsula. Vote "yes" with me on the Park District Maintenance and Operation (M & O) levy.

### Chiropractic Health Tips

By Dr. Robert Campbell

WHY DOES MY BACK HURT?

Back pain is not something that only a few select people experience. In fact, 80% of men, women and children will experience severe back pain during their life.

There are several mechanical malfunctions that can and will cause back pain. A few of them are:

- 1. Direct pinching of the nerve

Continued on next page

Have A Happy Day



## November Special

Receive a  
**FREE DEEP CONDITIONER**  
with any

shampoo, haircut, set

Reg. \$24.50

NOW \$19.50



### TANNING BED

"WOLF SYSTEM" FEATURING -  
• BUILT-IN FACIAL TANNER & STEREO

COUPON

**Tanning Special**  
3 Visits for \$10.00

COUPON



Sylvia's Styling  
& Tanning  
Salon



MON-SAT 9-5  
EVES BY APPT.  
K-C CORRAL KEY CENTER

884-2479

VISA  
MASTER CHARGE  
WELCOME

Call For Your Appointment Today

# TANNING THE HEALTHY WAY



## For Pet's Sake

By Robert L. Ries, D.V.M.

believe it or not only 10% of the time do people experience back pain because of a true "pinched nerve" but it is surely a cause of pain.

2. Edema or swelling - this will happen when there is inflammation in the low back due to a simple strain or, more commonly, due to a subluxation.

3. Fixation of spinal unit - this is yet another component of what is referred to as the "subluxation complex" and must be properly dealt with.

4. Other factors including muscle spasm and disc herniation.

Chiropractors carefully screen for all these problems and have scientific means of either controlling or eliminating all of the subluxation complex. Dr. Don Pero (Nobel prize winner in Genetics) has demonstrated very clearly that long standing subluxation can and will cause not only back pain but an acceleration of the aging process.

REMEMBER, there are two major factors to every health problem. They are symptoms and cause. Symptoms are the body's alarm system telling you a problem exists. Cause is the underlying factor that is emitting the warning or symptom. For example if you break a bone in your arm the symptom will be pain, but the cause of the symptom will be a broken bone. If you repair the broken bone the symptoms will disappear. Remove the cause and the symptoms will disappear. The same is also true with subluxations of your spine. Spinal bone pressure on your nerves can cause low back and leg pain, numbness, headaches and fatigue or loss of energy to name a few. If the bone pressure (or cause) is removed then the pain (or symptoms) will go away. In essence, the cause not the symptom has to be treated and corrected before you can get well and stay healthy. Once the cause is eliminated the symptoms will also disappear naturally with no outside interference.

The year 1985 marked the introduction of the first vaccine against feline leukemia. This is doubly significant due to both the seriousness of the disease and the ten years of research it took to develop the vaccine. After repeated failures, researchers at Ohio State University discovered a process to develop a vaccine that no longer caused immune system suppression - one of the problems of the actual disease.

Feline leukemia was thought to be an inherited disease prior to its identification in the seventies as a virus. The disease can manifest itself in a variety of ways. Suppression of the body's defense system can lead to secondary infections, reproductive failure, anemia, gastrointestinal and respiratory disease, etc. In some instances the virus can result in tumor formation. Despite its name, true leukemia as we think of it in humans is rare in cats.

The virus is passed from cat to cat by direct contact, usually through the saliva. Once infected, one of three possibilities exists. Approximately forty percent of infected cats recover without any apparent illness. Thirty percent show no symptoms but carry a latent infection and can potentially shed the virus to other cats. The final thirty percent will succumb to the disease and die within 1-3 years. Initial symptoms of a cat with leukemia tend to be nonspecific, with listlessness, loss of appetite, and weight loss the most common complaints. A diagnosis of leukemia, which is confirmed by a laboratory blood test, is often made only after eliminating other potential causes such as parasitism, diet, etc.

Treating a cat affected with leukemia is a difficult decision. While research into treating some forms of leukemia looks promising, in most instances improvement is only temporary. It should also be noted that a

cat under treatment should be isolated from other cats to prevent their exposure to the virus.

Vaccination for leukemia can begin as early as nine weeks of age. An initial vaccine is followed in 2-3 weeks by a booster, and for maximal protection a third vaccination is given two to four months after the second. An annual booster is then recommended after the series has been completed. If a cat has possibly been exposed to leukemia or comes in frequent contact with other cats, it is advisable to run a leukemia test prior to vaccination. The purpose for this is that cats testing positive will not respond to the vaccine. If given, however, the vaccine will do no harm to a positive cat.

A final word about the test itself. Some cats will test positive without any clinical signs. This does not mean that they necessarily have leukemia, but rather have been recently exposed to the virus. Those that fight the virus off will usually test negative 1-3 months later and can then be vaccinated.

If you would like more information on feline leukemia, contact your veterinarian. An informative brochure is available from the manufacturer of the vaccine.

Robert L. Ries, DVM

## Business News

Don't forget to go to the ARTS & CRAFTS FAIR at the CIVIC CENTER the first Saturday in December (that's the 7th folks). Lots of good stuff just in time for Christmas shopping.

The KEY CENTER LIQUOR AGENCY owned and operated by SHIRLIE MARIETTA is now accepting parcels to be shipped UPS. That's just in time for Christmas too.

NEVILLE'S SHORLINE in Gig Harbor puts on a real elegant spread. Kind of pricey for out here in the wilderness but just right for a birthday bash.

Visited GRANDMA'S CUPBOARD on (or just off) highway 302 about 1 mile north of Key Center. You might find that "just right" gift for Aunt Susie. The owner is looking for consignment things for the holidays too.

BETTY'S CONSIGNMENT SHOP in the KC Corral in Key Center is loaded with  
*Continued on Page 18*

### COUPON

In Purdy above 144th St. traffic light  
Telephone: 851-0944



## & PUB CAFE

SEAHAWK SUNDAY  
SPECIAL CHICKEN AND JOJO'S

Nov. 3rd, 10th, 17th, 24th (Mon. Nite) & 28th  
Games shown on wide screen T.V.

**2 for \$4.99**

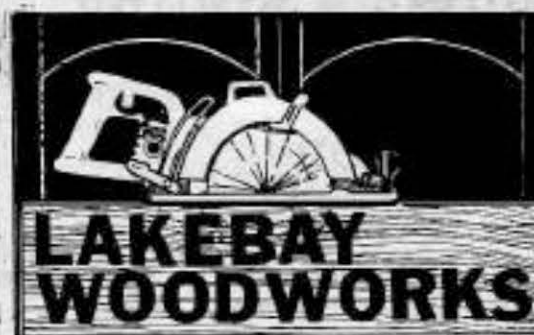
Pitchers of beer \$2.00 during game.

Present this ad when ordering.  
Good only on above dates.

Exp. 11/28/85

Coupon value 1/20th of 1¢

CLIP HERE



## LAKEBAY WOODWORKS

BUILDING ON A REPUTATION OF QUALITY WORKMANSHIP  
IN WOODWORKING AND CONSTRUCTION SINCE 1979.

John Carlson - Owner

884-3149

LAKEBU\* 196JO

- Custom Home Building
- Additions and Remodeling
- Imaginative Design
- Quality Service

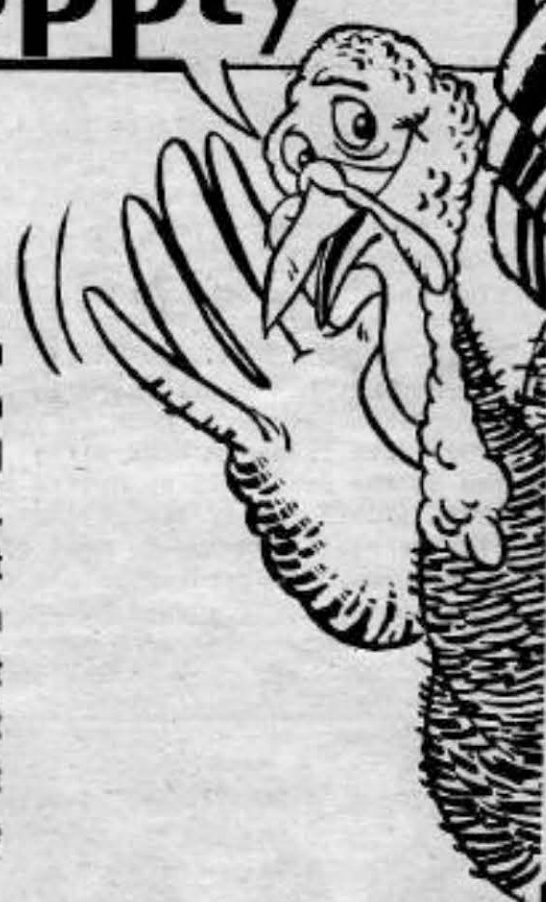


# Happy Thanksgiving from **LAKEBAY LUMBER SUPPLY**

(Distributors of Old Growth Fir)

## NOVEMBER BUILDING SPECIALS

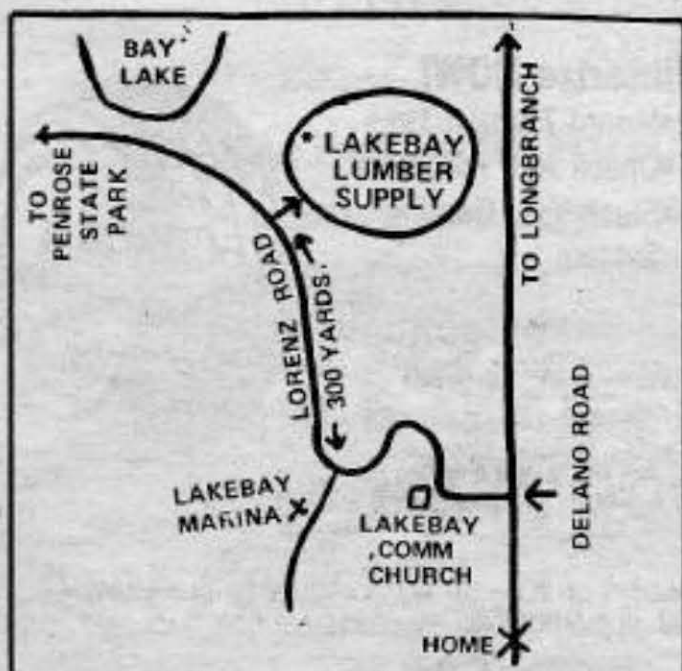
- 2x4x88 5/8 Studs ..... \$1<sup>25</sup> each
- 7 1/4 Skill Saw Blades ..... \$2<sup>99</sup> each
- 90 lb. Roll Roofing ..... \$9<sup>95</sup> /roll
- Exterior Latex House Stain ..... \$9<sup>99</sup> Gal.
- 1/2" No. 4 ReBar ..... 14¢ per linear foot
- 42"x12" Concrete Cuvert Pipe ..... \$13<sup>90</sup> each
- 4" Bender Board ..... 9¢ per linear foot
- 3/4x6 Tight Knot Cedar Bevel Siding .. 13¢ per linear foot
- 2x6 Select Tight Knot Cedar ..... 49¢ per linear foot
- No. 1 Medium Shakes ..... \$49<sup>00</sup> per square



## PLAN SERVICE AVAILABLE

Bring Your House Plans To Us.

**ALL SALE ITEMS CASH & CARRY \* LIMITED TO STOCK ON HAND.**



## OPEN 6 DAYS A WEEK

(CLOSED SUNDAYS)

**884-9211**

**884-9212**



522 Delano Road  
Lakebay, WA 98349



**Continued From Page 16**

good second-hand clothes and some gift items (hand made). She, too, is looking for consignment gift items for the season. Drop in and browse - everything is clean and mended and in good condition.

And while you are there don't forget that the Angel Guild Thrift Shop is in the same area. An Angel promised me that they would sort their clothes and they have lots of large sizes hiding in storage.

TIM ROYER has opened an automotive service in Lakebay. He has 20 years experience in the field and ROYER'S AUTOMOTIVE SERVICES offers quality work at affordable prices. A complete machine shop is available too. Call Mr. R. for more information at 884-3267.

Also heard that K & S Knits on the Lackey Rd. has really nice things at affordable prices. Check it out!

GOOD-IES is a new home party system on the Peninsula sponsored by MARIETTA STONER. They are giving parties to teach you how to make all kinds of candy. According to one of their recent party graduates, it's neat. Fast and easy and a lot less expensive than the candy store. She showed

me two chocolate suckers she had made (a horse and a bear) and they were darling. Looked good enough to eat! For more information call 884-9380.

## IN THE LIBRARY

This month we honor National Children's Book Week, November 11-17, and the life and works of E. B. White who died recently.

The following description of the book CHARLOTTE'S WEB by E. B. White is taken from FOR READING OUT LOUD, a guide to sharing books with children by Margaret Kimmel:

"Where's Papa going with that ax?" Fern's horror at her father's plans to kill the newborn runt pig rings out on the first page of CHARLOTTE'S WEB. Fern prevails on her father to spare the pig, names him Wilbur, and raises him on a bottle until he's too big and must go to live in her uncle's barn down the road. The barn is a wonderful place, full of pleasant sounds and smells, but Wilbur is lonely until he makes a friend, a spider named Charlotte. In spite of her bloodthirsty way of

life, Charlotte proves a loving and wise companion. It is she who conceives and executes the plan that saves Wilbur from being butchered in the fall.

"If a vote were taken for the best-loved read-aloud book in America today, CHARLOTTE'S WEB would win hands down. It has everything: humor, vivid characters, pathos, and wisdom. Written by one of the finest prose stylists of our time, the book is a model of eloquent, yet simple, English language. Recommended for children and adults of all ages."

Elwyn Brooks White was born in Mount Vernon, New York in 1899. Some have proclaimed him the finest essayist in the United States. Early on, he worked as a reporter for the Seattle Times. His editorial pieces and long association with the New Yorker magazine established his reputation. Several volumes of his collected essays have been published plus two books of verse and stories for children. A complete list of his writings is available at the Key Center Library.

Other book lists in honor of National Children's Book Week are also *Continued on Page 24*



The Purdy Branch of the Puget Sound National Bank is celebrating their first year in new quarters in Purdy. Left to right, front row: Sally Loosen, Bonnie Matthew, Ann Borders, Julie Hemley. Standing: Dan Patjens, Assistant manager, Judy Sanchez, Debbie Gerke, Dixie Fazio, Marcia Janes and Vince Tillota, Branch Manager. Janet Clark and JoAnne Baird were not present.

## It was just a year ago we grew into new quarters to serve you.

After 14 years of serving banking customers in our former location, we moved to our present location. And we brought more services to our customers.

Quickbank, the 24-hour cash machine, opened in our new location. And we know our customers appreciated the service.

Drive-up banking, three lanes, speeded up service for deposits and withdrawals.

And our new banking interior is larger and increased number of tellers expedited service.

We express our appreciation for your acceptance of our expanded services and quarters.

We have made our slogan come true. "Everything you want a bank to be." Day in. Day out.

**Everything you want  
a bank to be.**

**Puget Sound National Bank**

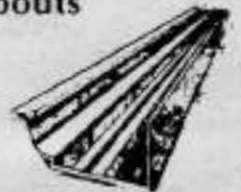
Big Harbor Point Fosdick Purdy

Member FDIC and Peninsula Country

### Continuous Pre-Painted Aluminum Gutters & Downspouts

- Residential
- Commercial
- Mobile Homes

**\$1.39**  
Per Ft.  
Installed



**OLYMPIC GUTTER CO.**

275-5557

P.O. Box 134

Call Now For Free Estimate

Allyn, WA



**Complete Car Care  
and  
Tire Service**

### Winterize NOW!

- Mount Traction Tires
- Check Anti Freeze
- Flush Your Cooling System

### Full-time Mechanic

- Why travel a great distance for car service? DJ's has service available always.



**851-4606**

Highway 302  
12119 Key Peninsula Hwy.  
Gig Harbor, WA 98335

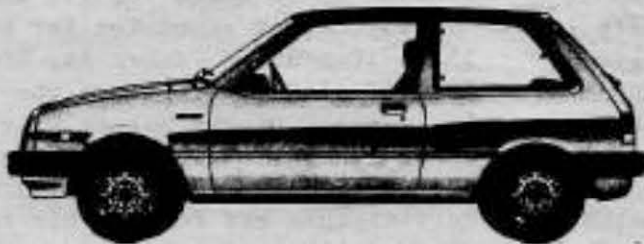
OPEN: 8 a.m.-5:30 p.m. Mon.-Fri.  
9 a.m.-4 p.m. Saturday



# DICK BOYLES CHEVROLET

**YOUR KEY PENINSULA  
FULL SERVICE AUTO DEALER**

**COME SEE CHEVY'S LINE-UP  
OF EXCITING NEW CARS**



**1986 Sprint Hatchback Coupe**  
The SPRINT loves to run.



**1986 Nova Hatchback Sedan**  
NOVA is the best of both worlds. A world-class affordable car.  
A joint venture between General Motors and Toyota Motor Co.



**1986 Spectrum Hatchback Coupe**  
SPECTRUM is a spectacular combination of practicality  
and a car that's fun to drive.

**PLUS, CAMERO'S, CAVALIERS, S-10 BLAZERS**

FULL SIZE PICKUPS, VANS, EVEN MEDIUM DUTY TRUCKS  
AND MUCH, MUCH, MORE!

**DICK BOYLES SERVICE DEPARTMENT** features complete  
service for all makes of cars and trucks.

**8.8% FINANCING**

**AVAILABLE ON SELECTED  
VEHICLES**

9-7 Mon.-Fri.  
Until 5 Sat.  
5502 State Road 16  
Gig Harbor, WA 98335

**851-9931**



Continued From Page 18

available: 1) Caldecott Medal Books. Awarded annually since 1938 for the most distinguished picture book for children. 2) Newbery Medal Books represent the most distinguished writing in children's literature. Awarded annually since 1922. 3) Best children's books of 1984. 4) Young reader's choice for 1985. Children select their favorites.

**LIBRARY HOURS:**  
 Tues & Wed 1-8:30  
 Thurs & Fri 1-6  
 Saturday 12-4  
 Sun & Mon Closed

## Log House Studio Open House And Art Show

Dori Richards, artist and instructor extraordinaire is having her second annual open house and sale at the Log House Studio. Students and instructor will be showing their own art work along with a new collection of pictures from Greece. Richards specializes in the pallet knife technique exclusively. Some of her fine work is in portraits, landscapes and still lifes.

Classes are held Tuesday from 11-3, Wednesday from 1-4 and Thursday from 6-9 pm. The Log House is a working studio and not a gift shop and this limits the hours that one may browse and shop at the open house.

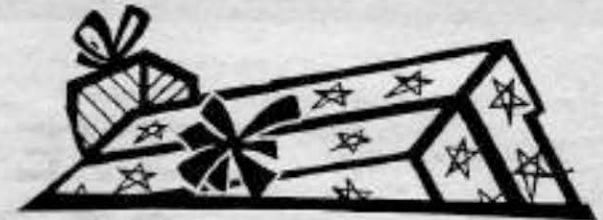
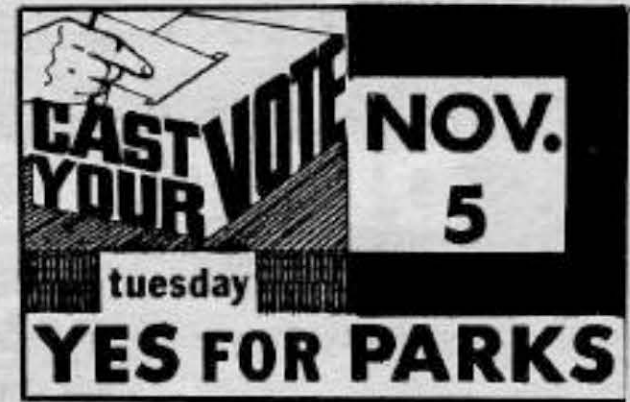
To get to the Log House Studio go south on 302 to Home. Just before the bridge turn right on Herron Rd. and follow it for 2-1/2 miles. Signs will then direct you. For further information call 884-4822

## Turkey Feast for Area Seniors Set Nov. 21



### All Peninsula Seniors Invited

Key Peninsula Senior Society is planning its 5th annual Thanksgiving Dinner for Peninsula seniors and their guests on November 21, the week before the traditional "Turkey" day. There will be musical entertainment by the Bellringers of Lakebay, and another musical vocal group. After the feast the game tables will be set for cards, backgammon, cribbage, etc. There will be a free-will offering box available for those who wish to contribute. All this takes place in the Vaughn Civic Center auditorium at noon on Nov. 21. Hope to see you there.



### Olalla Elementary School Plans Bazaar

Olalla Elementary School has begun renting booth space for its annual Holiday bazaar scheduled for November 15, 6-10pm and November 16, 10am-6pm. Individuals and/or groups who register for a space at the bazaar will pay \$15. Space is limited and will be awarded on a first-come, first-served basis. Participants are responsible for setting up, running, and cleaning up their space for the bazaar. Only pre-packaged homemade food will be allowed at individual booths. Set-up time will be between 4 and 6pm on November 15. If you need further information, call 876-7343 or 857-4705 and ask for Ginny Murphy or Denny Bond.



## KEY CENTER FAMILY DENTISTRY JOHN D. OLSSON D.D.S.

"A sure cure for cowards"

### HOURS:

TUES.	
THURS.	7:30 a.m.-4:30 p.m.
FRI.	
WED.	12 p.m.-8:00 p.m.
SAT.	By Appt. Only

9013 Key Pen. Hwy.  
Lakebay, Wash.

884-9455

## The Queen Bee

The best kept secret  
in  
Port Orchard  
FULL SIZE FASHIONS

### WINTER JACKETS

Nylon & Wool Blends  
Sizes: 38-52

### Sweatshirts on Sale

**\$19<sup>50</sup>**

Sizes: 38-44

**HOLIDAY DRESSES  
WILL BE HERE SOON!**

## The Queen Bee

Hours: Mon-Fri 10-6 Sat 10-5

South Park Village Shopping Center

871-5460 - in THE THRIFTWAY SHOPPING CENTER





## Indoor Gardening in November

by Margaret Paul

My mother, Esther Harriman, who lived most of her long life at Vaughn, had a clivia plant, along with many other indoor plants. It brought us much joy, too, during the darker winter months, for the sparkling orange and yellow blooms lit up a whole corner of the window-seat where the houseplants resided. It was a favorite, for the clivia didn't require a lot of pampering, yet brought much satisfaction in the brilliant clusters of a dozen to almost two-dozen blooms over the lush, dark-green leaves. She had planted the bulb in a pot just below the soil line, and kept the soil slightly moist. It sat in a sun-dappled corner where it was not in hot, bright rays. Standard houseplant fertilizer kept it in good condition, along with nighttime temperatures which didn't fall below an average 50° F. We had to be careful not to overwater, for crown rot might

be the sad result. The clivia blossomed beautifully in just three or four weeks and mother could propagate the clivia by root division immediately after flowering. Clivia made a good houseplant which lasted a very long while. It did not require a period of cold and darkness such as daffodils, hyacinths and tulips do, nor did the clivia go dormant and require storage part of the year, such as tuberous begonias and some other plants.

Altogether, it was a most exotic and satisfactory houseplant which brought a continuous show of color when Mother started a new bulb every few weeks. Our east window was gay with the orange and salmon-pink of clivias every fall and winter.



by Elaine Forch

I dearly love a neat, clean house, but sometimes I wish I could be more comfortable with casual clutter. I think my Grandmother is the person responsible for my attitude toward housekeeping. Somehow, she passed on the idea that a morally upright woman kept a sparkling clean home - at all times. I suppose there

is some small merit to that old notion, but I am beginning to wonder if twenty years of battling prolific just bunnies, cobwebs, greasy fingerprints and endless mounds of clutter isn't a tragic waste of my energies.

My rebellion against that illusive image of the perfect housewife was sparked to some degree by common old exhaustion. But my real enlightenment came with the death of my youngest son. Kurt was a charming, wonderful son and a beautiful person, but his bedroom looked like the city dump on a bad day. We had many interesting discussions about the chaotic state of his room, but I finally gave up. Kurt was just too busy with the rest of his life to care about his bedroom and I decided I really didn't care enough to continue fussing about it. I really wasn't too surprised to learn that his untidy room didn't matter at all after he was gone. But I really was surprised to find that the memory of his messy room, with dried ice cream bowls and stiff banana peels under the bed, and his school locker that we found crammed with wads of paper, stiff, dirty socks, old shoes and most of our towels from home was one of my very favorite memories. It's a "fun" memory that always makes me smile and helps me to remember the "real" Kurt - not the "perfect" person that he's become since his death.

And yet - old habits die hard.

Continued on Page 26

# China Palace RESTAURANT

NE 23320 HWY 3

275-4444

BELFAIR, WA

## THANKSGIVING GREETINGS

FROM THE STAFF OF THE CHINA PALACE

WE SPECIALIZE IN CANTONESE CUISINE WITH TRADITIONAL FAVORITES

LUNCH SPECIALS

YOUR FAVORITE COCKTAILS

AMERICAN ENTREES AVAILABLE

**Sunday Brunch 10 a.m. - 2 p.m.**

RESERVATIONS RECOMMENDED FRI. & SAT.

Semi-Private Room For Family Parties or Banquets

SENIOR CITIZEN DISCOUNTS

VISA & MASTERCARD

HOURS:

11:30 a.m. to 10 p.m. — Tues. thru Thurs.

11:30 a.m. to 11 p.m. — Fri. & Sat.

12 Noon to 10 p.m. — Sundays

CLOSED MONDAYS



# HOME LAUNDROMAT

## DRY CLEANING LAUNDRY SERVICE

Next to Lakebay  
Post Office

ALTERATIONS

884-9292

Our phone number is 884-3828

### UNTITLED POEM

This is an ad—you can be sure  
the intent should be made  
clear,

But first we thank-you all—  
your encouragement has been  
dear.

Mistakes we've made—so  
much to learn

yet you smile and forgive.  
So now we say you've just  
been great

and helped our business live!

**Chet's Lakebay Chevron**

is who and what we are;

Read some of what we do &  
sell

for you and for your car.

Batteries and tires,

(of course with warranties),  
light bulbs, head lights, wiper  
blades;

Do you need antifreeze?

Maps, fuses, filters, gas caps,

air—yes that is free;

Propane, hoses, belts,  
clean toilets (thanks to me).

Chet replaces brake shoes

Sue sells Avon, too,

Matt repairs flat tires  
and mounts them up for you.

Coffee, tea & muffins,

when its dark at 6:00 & cold,

We'll lube and change your oil  
when you know that it is old.

Windows washed and oil  
checked

as gas is pumped for you;

Good service is our goal

Come back if it is true!

Continued From Page 25

If Kurt's death turned out to be a bad nightmare and he were to come in that front door right now, I know from deep within my housekeeper's heart, that after a few days I would say to him, "honey, could you see what you can do about that bedroom of yours, it looks like the city dump on a bad day!"

After all, didn't Grandma tell me that cleanliness is next to Godliness?



Buzzing down to the lower Peninsula today is so easy we scarcely give it a thought, 'tho' there are better roads. We can get nearly anywhere in about half an hour.

I wonder just how polluted the air was in the old days, compared with today's more invisible but deadly air and water pollutants. We did not have lead additives in gasoline. Low compression engines did not "ping". We took care of that with a hand-operated "spark" control. There were no deadly PCB poisons draining from used transformers into the bay. Did the fumes from kerosene lamps put forth cancer-causing chemicals? Maybe.

Wood smoke was not thought of as a health hazard. When it settled low

we endured it, otherwise it was ignored. Today there are rules and specifications regarding smoke emissions from wood stoves. Some neighborhoods even restrict the use of stoves because they are considered air polluters! I wonder how many wood stoves would equal the air pollution of the hundreds of airplanes that zip overhead every day. No catalytic converters on stoves either.

In spite of smoke that sometimes filled the air for many days, we used to have nights so clear the stars seemed suspended by invisible wires in space. Now a clear night is rare. An occasional star seems stuck under a huge dome, like a fly speck on a dirty ceiling.

Smoky pollutants of the old days, from forest fires, sawmills, steamboats and wood stoves, did not extend into the upper atmosphere so permanently. A good rain cleared the air and put the sparkle in the stars again. Smog that hides some cities from the air is not the same as woodsmoke. It seems sinister and smells sick.

We might not trade the Peninsula's network of hard-surfaced roads for the dusty, muddy chuckholes of the old days, but it would be nice to see the old-growth trees that stood where the present refuse collection site radiates the summer sun. Docks that bridged the space from steamers to land would be welcome, as would the fishermen and swimmers who enjoyed them.

Whistles of steam donkeys, and the cry of "timber!" from a "set" of hand-fallers sounded sweeter than the snarl of a chainsaw, as did a sharp scythe cutting hay for the family cow, compared to a gasoline lawnmower.

Smelled better too; the grass.

and our address is 1315 KPHN, Lakebay (off Home)

Our hours are 6:00 a.m.-7:00 p.m.



"QUALITY HOUSEKEEPING  
AT AFFORDABLE PRICES"

- Residential Housekeeping
- Commercial Clean-up
- Windows
- Carpet Cleaning
- Deep Cleaning a Specialty

851-5200

3206 50th St. Ct. N.W.

Hific Center behind Bag & Save

Nope, we're closed on Sunday.

Saturday hours are 8:00 a.m.-6:00 p.m.

Monday through Friday.



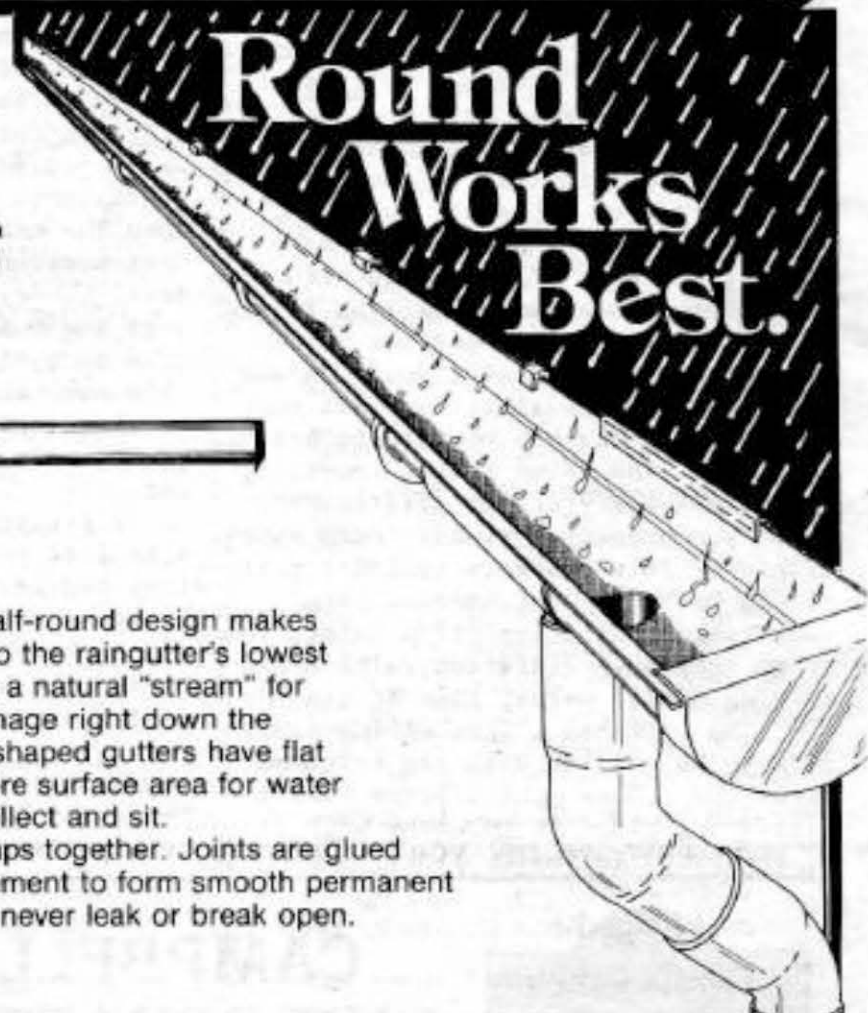


# KEY WESTERN

## KEY CENTER 884-2311

# BUILDING CENTER

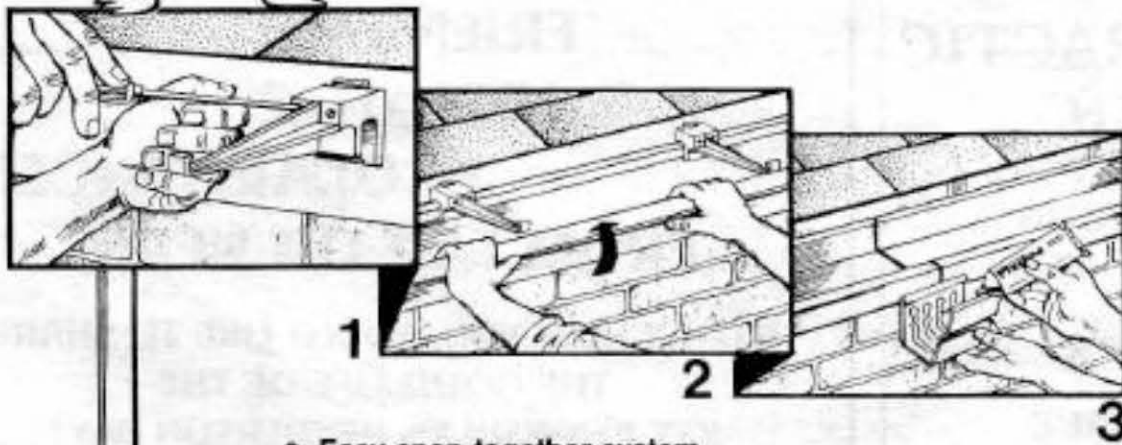
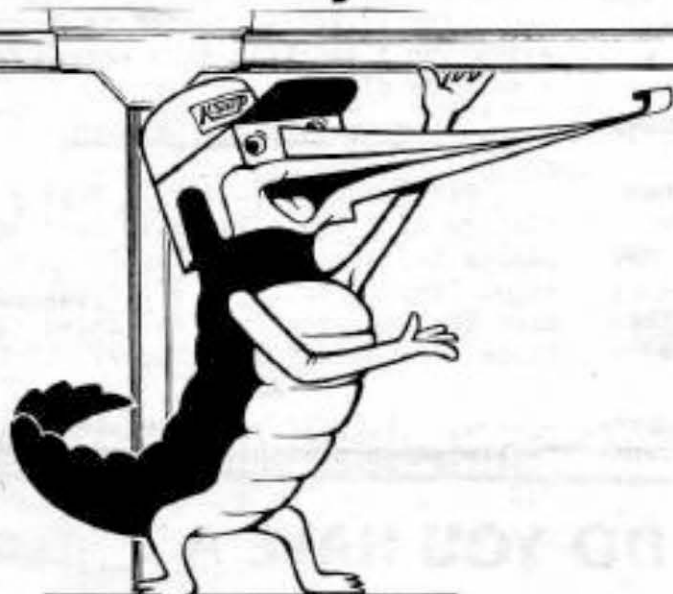
Do-It-Yourself with **K-Snap™**  
 Maintenance-Free Vinyl Rain Gutters  
 by **Plastmo**



Round  
 Works  
 Best.

Plastmo's half-round design makes water gravitate to the raingutter's lowest area. This forms a natural "stream" for quick, easy drainage right down the middle. Square shaped gutters have flat bottoms and more surface area for water and debris to collect and sit.

Plastmo snaps together. Joints are glued with Plastmo Cement to form smooth permanent seals which will never leak or break open.



- Easy snap together system. No special tools or experience required.
- K-Snap solid vinyl never needs painting.
- Traditional styling and concealed brackets ensure straight attractive lines.
- Treat your home to the lasting, maintenance-free beauty of the K-Snap rain gutter system.

Plastmo vinyl  
 Raingutters  
 work best  
 for quick, efficient  
 drainage.

We have  
 everything you need  
 and  
 friendly advice  
 too...



Key Western Building Center  
 5115 Key Peninsula Highway N.  
 Lakeway, WA 98349

Do-it-yourself

With

**Plastmo** 



# Restaurant Guide

by Janice McMillan

At the Health Clinic Open House a friend and I were talking about writing restaurant reviews. We decided that people want to know about the pleasant and exciting places to eat, not the bad ones! So instead, I would like to tell you about the Entertainment '86 Book, a "review" of lots of neat places to try.

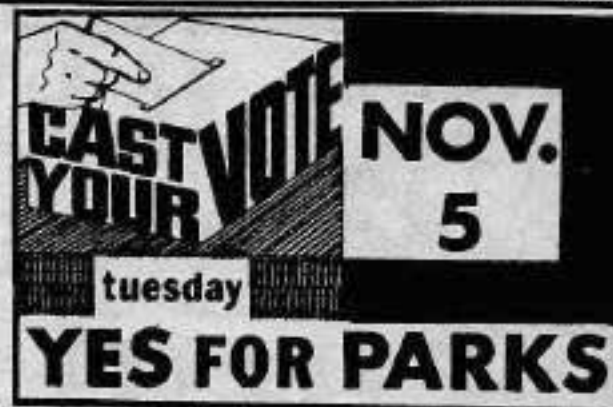
I had a chance to preview a copy of the "Entertainment '86" book which has hundreds of discounts on dining, travel and entertainment. The main part of the book is concerned with dining discounts and works like this: You buy two meals and get the least expensive or equal value meal "on the house", up to the limit for that restaurant. In the new book there are no coupons in the "Fine Dining" section, there is a fancy silver plastic card which you present instead. Much nicer, I think. This category includes most of Gig Harbor's restaurants. Read each restaurant description before you go as they have different rules concerning dollar value, time of use, etc.

The book has a fine dining index card to be carried with you for speedy reference. Have your glasses and/or magnifying glass to go along with it as the print is really tiny.

Restaurant descriptions are quite flowery and were probably written by an advertising agency but they do give clues as to what the restaurant is all about. The menu on the facing pages will help you know prices and what type of food is offered.

The "Casual and International Dining" section has 48 coupons for restaurants from Kent to Olympia. Other sections include "Informal and Carry Out", "Theatre and Special Events", "Sports" (Seattle Mariners, Super-sonics, Longacres, Tacoma Stars, Alpentel, Tacoma Tigers, UPS and PLU football and basketball, etc.), "Highlights of the West" (white water rafting, swimming pools, boating, whale watch cruises, motels, hotels and restaurants from Vancouver and Victoria, down the coast to California). The last section had discounts on rental cars, condos and accommodations all over the U.S. It would be wise to take some time to thoroughly examine this book when you buy it. It is easy to miss something you might use if you haven't really checked the book out.

Everyone I spoke with was pleased with last year's book. They felt they had saved a great deal of money and in addition had found some new and interesting places to eat and stay. Carry your book in the car and you will find it will come in handy. The Key Peninsula Lions Club will have these books on sale in November. They cost \$25.00. Buy or reserve your copy early as they have a limited



number. The Lions Club uses the small profit for the benefit of our community.

## At Home On The Range

By Janice McMillan

Most new chicken recipes seem to call for chicken breasts, and I didn't have any. Other recipes called for heavy cream, half and half, white wine, mushrooms and a lot of other ingredients that I didn't have. What I did have was two chicken legs with thighs attached and dinner-time fast approaching. The following recipe is my creation and I think it good enough for a company dinner.

### Lakebay Tarragon Chicken

Preheat oven to 375°. Make a mixture of 2 Tbs salad oil, salt and pepper to taste, and 1 Tbs fresh tarragon leaves\* or 1 tsp dried tarragon. Mash the tarragon into the salad oil. Place two whole (with thighs) chicken legs on broiler pan and baste with tarragon mixture. When chicken is

Continued on next page



## CAMPBELL CHIROPRACTIC CLINIC

5110 LACKEY RD.  
KPN, VAUGHN

OPEN 7 DAYS A WEEK

24-HOUR EMERGENCY SERVICE

8 a.m. to 8 p.m. by Appointment

CALL 884-2144 - TODAY

### DON'T LET NECK & BACK PAIN SPOIL YOUR HOLIDAYS THIS YEAR!

Come see us and we'll tell you what's wrong and if we can help, how long it will take and how much it will cost before there is any charge, *not after*. No obligation!

DON'T DELAY — CALL TODAY!

CALL TODAY FOR A FREE EXAMINATION!

## DO YOU HAVE A FRIEND? RELATIVE? ACQUAINTANCE? FROM FAR OR NEAR,

WITH WHOM YOU WOULD LIKE TO SHARE  
THE GOOD LIFE OF THE  
KEY PENINSULA'S HENDERSON BAY?

JOYCE JOVEY, OF COLONY  
REAL ESTATE, HAS THE BEST  
PLACE FOR THEM OR YOU!!

PHONE HER AT 884-3304 FOR DETAILS ABOUT  
A 3-BEDROOM, 2½-BATH, 6-YEAR-OLD HOME,  
LOCATED ON 240 FT. OF LOW-BANK,  
BULKHEADED WATERFRONT.

PRICED AT \$249,000 ON OWNER CONTRACT.

DO THEM AND/OR YOURSELF A FAVOR TODAY.

884-3304



done (about 35 min.) remove from oven and keep warm. Scrape all juices, brown bits and fat from broiler pan into small sauce pan. Turn the heat up high and add two rounded tsp Dijon mustard, 1/2 c. cider (mine was slightly old and vinegary but bought fresh from Bischoff's Lakebay Farm). Boil hard, stirring all the while, until syrupy. Pour over warm chicken and serve. Nice with brown rice pilaf, green vegetable and a lettuce and tomato salad with dressing made with tarragon vinegar. Serves two.

\*Tarragon is easy to grow in a partly sunny window. Buy your plant from a reputable dealer (don't use seeds, plants for culinary use come from division) and be sure it is French tarragon, as the Russian variety has no flavor and is no good for cooking.

### Pack a Safe Lunch

A child's bag lunch should not be just a snack, but an important part of the day's diet.

Precautions need to be taken to make sure that any perishable foods in the lunch will be safe to eat at lunch time.

Extension agent Olga Fuste' says lunchbox foods that can cause food poisoning include cooked vegetables, custards, puddings, cream pies, milk, meats, poultry, fish and eggs. These foods cause food poisoning because bacteria can grow very quickly in them due to their high moisture and low acid content.

Continued on Page 39



Freighthouse Theatre  
Pleasant Evening

"LUV" is a fast, looney comedy that is lots of fun for both actors and audience. It is put on by the Freighthouse Theatre at 565 Broadway Building. They have done six plays since relocating from a theatre near the Tacoma Dome. They are doing mostly popular plays aimed at what they hope is an intelligent audience, and they are attaining a professional quality.

They have done very well. Although I can't speak to the intelligence of the audience, the actors, at least, are professional. Artistic Director, James Allyn, plays the lead in this zany production of life after the 60's written by Murray Schisgal. He portrays Harry Berlin who dropped out of the main stream of life 15 years ago when, one week after graduation from college, a dog used his leg for a fire hydrant. This proved to him that he was a worthless human being and he swiftly became a guitar-playing derelict, guitar-playing being the final degradation in a long list. He is saved from imminent suicide by his one-time class mate Milt Manville played by John Munn. Milt has become the personification of monetary success and he tells Harry that the reason he has failed is because he has never known Luv. As a matter of fact, he knows just the person to fill Harry's need - his wife Ellen, played by Christine Burns - as Milt has fallen in Luv with another woman. Ellen is an intelligent, well-educated woman who has become sublimated in marriage to the male chauvinist, but successful Milt. She can't stop telling anyone who will listen how intelligent she is. Each

Continued on next page

## GORDON, MISNER & ROBINSON ATTORNEYS AT LAW

DAVID D. GORDON  
F. MICHAEL MISNER  
JEFFREY A. ROBINSON  
MARY E. DICKE

• PERSONAL INJURY

- Auto Accidents
- Wrongful Death
- Product Liability
- Medical Malpractice
- Workers' Compensation

• WILLS & PROBATE

- DOMESTIC RELATIONS
- SOCIAL SECURITY
- CRIMINAL DEFENSE

• ESCROW SERVICE

- REAL ESTATE
- BUSINESS
- OTHER CIVIL MATTERS & LITIGATION

GIG HARBOR

851-2323

7512 Stanich Ct # 2  
Harbour Commons

KEY CENTER

884-9241

8912 KPN  
Lakebay

EVENING & WEEKEND APPOINTMENTS



tells horror stories on a "can you top this basis" of how miserable their child hood was and how it has effected their lives.

All three parts are well played, but James Allyn steals the scenes with his nutty rendition of Harry Berlin. His double-takes and comments are so well done that the audience waits for his reaction after every line spoken by the other two. Before long the audience can almost say the lines with him and that makes the evening all the funnier. The play's timing is terrific and the pace is so fast that two hours goes by quickly.

The dinner was excellent and varied, well served and hot. All-in-all it was a very nice evening and one that we'll want to repeat soon.

JAMES ALLYN

James Allyn (aka Herman Heerspink of Vaughn) graduated from Peninsula High School in 1978. His family still resides here along with James. You may also have known him as Keith. It's not hard to see why he changed his name ... James is a lot easier to remember.

**Good Value**

Next month the production will be Barefoot in the Park and it promises to be another good evening. We are looking forward to it. Tickets are \$15.00. Phone 272-8118 for reservations.

**Don't forget Nov. 5**

**Sunnycrest  
Pumpkin Growing Contest**



NICK STENCIL SHOWS OFF HIS PUMPKIN

**McKinney Wins**

by Claudia Loy

**THE BIGGEST PUMPKIN ON THE PENINSULA**

Mac & Bill McKinney are the proud winners of the Sunnycrest Nursery's Pumpkin growing contest. Their pumpkin weighed in at 278 lbs., the biggest on the Peninsula.

The contest was started in April with a sign up sheet for adults and children to show what their green thumbs could grow. Through the long hot growing season there were reports

on how large each pumpkin was becoming. On Sunday, Oct. 12th, Dale Loy, owner of the nursery, headed for the pumpkin patches to weigh the winners.

Home colony boasted 4 of the 5 winners and aren't giving out the secret of why this area did so well. The second place winner was Virginia Sands, her pumpkin weighed 120lbs., third place with 94lbs., was Ethel Woodman. For the children's division Nick Stencil won with his pumpkin weighing 71lbs. and finally the only winner not from Home, Charles Walters of Minter, with 17lbs. All winners received gift certificates.

They had one honorable mention, Shirley and Don Olson. Shirley and Don grew a pumpkin that weighed 122lbs. but being the parents of Claudia, owner of Sunnycrest Nursery, they were disqualified.

Sunnycrest Nursery would like to see this become an annual event so start collecting those seeds and ideas for next year.

**Developmental Screening**

The Peninsula School District will offer a developmental screening for 3-to-5-year old children at Vaughn Elementary, on Thursday, November 14.

The purpose of this is to identify any weaknesses that may affect a child's success in school. School staff will screen various areas, including motor, speech-language, behavior, learning, and hearing-vision-health. All parents are encouraged to take advantage of the screening, especially if they have questions regarding their child's development.

Although most children screened will not have any problems in physical or mental development, it is estimated that 10-15 percent may have difficulties that will interfere with learning. These problems, if identified early, may often be corrected, or at least may be brought to the attention of specialists who can begin working with the children and family.

The screening takes approximately 60 minutes. Parents will receive a summary of the results the same day. A child who has difficulty in any area may be asked to return for further testing.

To schedule an appointment, call Special Services Department, 857-6171, ext. 249. Those who would like additional information or have any questions may contact Kathy Oliver, Childfind Coordinator, at Purdy Elementary, 857-6171.

**Longbranch Self-Storage**  
(1/2 Mile North of Longbranch Mercantile on the left.)

ON-SITE MANAGER (Guard Dog On Duty)

- LOCKERS 5 x 5 & 5 x 10
- GARAGE SPACE 10 x 15 & 10 x 24
- COMMERCIAL STORAGE 20 x 30

BOAT STORAGE NEAR 3 PUBLIC RAMPS

FT. 2 BOX 425 LONGBRANCH, WA 98351 PHONE (206) 854-4466

ON SITE MANAGER 884-4466

**BOAT DRY STORAGE Commercial Size Garages (20 x 20)**

**WEEKDAY EVENINGS 6-9  
WEEKENDS 9-6  
CLOSED MONDAY AND WEDNESDAY**

**The Eatery**  
KC Corral - Key Center  
884-4403

In November we are offering a choice of any one of **10 BREAKFAST SPECIALS — \$1.99**

HOURS:  
7:30 a.m. to 8 p.m. on Monday through Friday  
9:00 a.m. to 6:00 p.m. on Sunday

**Balloon Bouquets**  
FOR ANY OCCASSION  
Helium - \$2.25 each  
Refills 75¢ each

**SUNNYCREST** 884-3937  
NURSERY & FLORA KEY CENTER



# PURDY

Over the Counter?  
 "Good Neighbor Pharmacy"

- Calcium 600 \$2.29
- Hygienic Cleansing Pads \$2.29
- Vitamin C 500 TR 100 \$2.99
- Long Acting Nasal Spray 15cc. \$1.29
- Antacid Susp. Simethicone 12oz. \$1.19
- Mondane Bulk (Bulk Laxative) 14oz. \$2.00
- Charcoal Briquets 10 lb. \$1.49
- Revolving Lawn Sprinkler Reg. 9.99 **SALE \$6.00**
- Matching Lip & Nail Enamel Reg. 1.99 **SALE 99¢**
- Pure Glycerin Soap Reg. 1.00 **SALE 75¢**
- Stren-Leader-Line 12 lb. test, 17 lb. test, 2 lb., 20 lb., 10 lb., 6 lb., etc. Reg. 59¢ **SALE 35¢**
- Tilex Mildew Stain Remover 16oz. \$1.69

Now we've added the lowest **everyday** photo prices to the **everyday** lowest prescription prices.

**Photo**

Purdy Pharmacy	Clic
12 exp. \$1.99	\$5.29
24 Exp. \$3.49	\$8.44
36 Exp. \$4.99	\$12.49

**Call for PRICE QUOTES on ANTIBIOTICS. You'll Be Glad You Did.**

**CARDIZEM** 60mg \$34.95  
 (diltiazem 60mg) Marion No. 100 Tablets

**LASIX** 40mg \$11.35  
 (furosemide 40mg) Hoechst No. 100 Tablets

**DILANTIN** 100mg \$6.95  
 (ext. phenytoin sod. 100mg.) Parke-Davis No. 100 Capsules

**TAGAMET** 300mg. \$35.25  
 (cimetadine 300mg) SKF No. 100 Tablets.

**NICORETTE** \$15.20  
 (nicotine prolacrilx) Merrell-Dow No. 96 pieces.

**LANOXIN** 25 \$4.20  
 (digoxin .25mg) Burroughs Wellcome No. 100 Tablets.

**INDERAL** 40mg \$17.20  
 (propranolol 40mg) Ayerst No. 100 Tablets

**VENTOLIN** INHRF \$8.85  
 (albuteral inhaler-rf) Glaxo No. 17gm refill.

**TIMOPTIC** .5% OPTH.SOL. \$17.50  
 (timolol maleate).25% OPTH.SOL. \$19.88  
 MSD 10cc

**TENORETIC** \$39.95  
 (atenolol/chlorthalidone) Stuart No. 100 Tablets.

**TRANDATE** 200mg \$23.25  
 (labetolol 200mg) Glaxo No. 100 Tablets.

**TRENTAL** 400mg \$27.10  
 (pentoxifylline 400mg) Hoechst No. 100 Tablets.

Located in the  
**PURDY SHOPPING CENTER**

**851-4053**

# PHARMACY

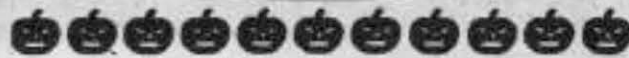


# Halloween Party Oct. 31



THERE WILL BE: FREE CANDY, APPLE CIDER, APPLE BOB, FISH BOWL, GYPSY HOUSE, KNOCK KNOCK DOOR, DONUT BITE, BEAN BAG TOSS AND MUCH MORE!!!!!!COME ONE COME ALL AND JOIN IN THE FUN.

## shake your



### Watch for This

Watch for this in upcoming papers!

"Hotline for the Holidays", by Connie Schafer. The latest in fashion for the holidays will be featured in the December issue.

This will be a first of several articles featuring fashion, makeup, skin care and "dress for success".



## CC Board Biz



DOOR PRIZES ARE DISTRIBUTED AT GRANGE DINNER

The Upper Sound Grange proved that with a little ingenuity and some work money can be raised. All non-profit organizations that use the Civic Center are asked to raise \$500.00. This has caused many headaches and a lot of work on the part of the organizations. They have given breakfasts, dinners, flea markets and craft fairs in order to raise the money. All at the expense of a lot of time and hard work and sometimes with not terrific results.

Continued on next page

THE KEY PENINSULA HORSEMAN'S CLUB AND THE KEY PENINSULA CIVIC CENTER ARE THROWING A PARTY

DATE: October 31

TIME: 6:30 - ????

PLACE: KEY PENINSUL CIVIC CENTER

WHO IS INVITED? KIDS OF ALL AGES

COST OF ADMISSION: \$00.00

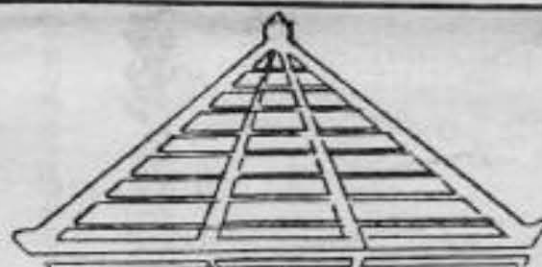


# GIG HARBOR NATIONAL BANK

MEMBER FDIC

Your Community Bank

## Coming Soon to Key Center



# Gazebo Gardens

## The Local Authority

851-4800 - Purdy

### HARK!

Ornaments are here  
With Holiday Cheer

Buy now

Before they disappear

MONDAY-SATURDAY 9-5:30

SUNDAY 9-4:00

14701 Purdy Drive N.W.

Cut Flowers Available



The Upper Sound Grange presented the Civic Center with a check for \$557.00 raised by holding a chicken dinner and raffle put on by a marketing company called "Luncheon is Served." This company serves between 80-125 meals at a cost of \$125.00. The Grange charged \$5.00 per person and raised an undetermined amount with the raffle of a basket of food donated by representative companies.

Bob Field and Elsie Olsen were co-chairpersons for the event that sold 125 tickets. The menu consisted of baked chicken, green salad, pea salad, pork and beans, two kinds of bread and dessert. For further information on how you can put on an easy and profitable fund-raiser you may call Sharon Harrison or Gloria Ripoli at 272-0155, or write to 711 Military Rd. E., Tacoma, 98445.

Reno night on November 2! Lots of games - dice, 21, bingo, lots of good hot food - hamburgers, hotdogs, chili; lots of drinks - booze and soft lots of fun. From 4 pm to midnight. Come, bring a friend and win, win, win!

Bingo on Wednesday evenings is growing. Lots of winners big and little. Come join this crowd and have a super evening out. Inga is taking a 2-month leave from the job as chairperson and Lenore will temporarily take her place.

The nominating committee announced that they have Vicki Henschel running for president and Dale Loy for vice-president. They are looking for representatives from the various areas so volunteer everyone - this is your chance to contribute input into what happens in the community. On November 14, at the regular board meeting, nominations and appropriate seconding speeches will be taken from the floor so don't miss your chance to have a say. Make this an event that I can write about ....

Med Swenka announced that the fire department had purchased the Jaws of Life from a final (big) donation received from the Angel Guild and the Fire Fighters Association.

Twilight Dance Club announced that they were embroiled in plans for a bigger and better New Years Eve Dance and Party.

Never be discouraged at things you cannot do, remember that the mighty oak was once a nut like you.

## Gambrel Farms Open Barn a Great Success

Gambrel Farm Arabians hosted their third annual Open Barn, Sept. 28. Almost 300 people enjoyed great Bluegrass music provided by "The Cowchip Pickers." The weather was so cooperative band members worked up a sweat. You'd have had to be here early to enjoy the refreshments provided by participants of the sale. It seems that two huge cakes, loads of cookies and 12 gallons of punch just weren't enough.

We started the show with our senior stallion, KARRON WISERR (Zaaris x Kolett) at liberty. Always a crowd pleaser, Karron gloriied in every minute of the attention. You may remember Karron from the Pioneer days parade.

Darik Anderson presented our Jr. stallion, MHR Cutlass (Port Bask x Farkeela). "Cut" was flaunting his Reserve Show championship ribbon won at the recent Autumn All Arabian show in Tacoma.

This year we introduced our children, each mounted on their own horses. Proceedings moved on to include a fine group of sale horses. Then Gwen Iaes gave a driving demonstration using A-HU-LANI (Karron Wiserr x Checkers Ruffian) That included rides for all interested guests. Darik, a professional trainer, gave a halter demonstration showing us what it takes to win in the show ring with Arabian halter horses.

Thanks again from all of us at Gambrel Farm 884-4310

# WETZEL RECYCLING

WE ARE OPEN FROM 11 AM to 5 PM TUESDAY THRU SATURDAY INCLUDED

COME ONE COME ALL!

16511 84th KPN, 1/2 Mile South of Key Center on the way to Home and Longbranch, catch sign on Right hand side of road and turn right and follow the signs to the end of the road. Phone 884-4172.

11 OZ Bottles

BEER-BEER 30¢ case	TAVERN TALL'S 60¢ case (1¢ per Bottle)
BUCKHORN 30¢ case	RAINIER 40¢ case
LUCKY 30¢ case	OLYMPIA 30¢ case 12 Oz
Regal Select 30¢ case	HAMMS 30¢ case 12 Oz
RHEINLANDER 30¢ case	Aluminum Cans 15¢ lb (Clean & Smashed)
BALLANTINE 30¢ case	Aluminum Cans 13¢ lb (Not Smashed & Clean)
RAINIER ALE 30¢ case	Alum Foil 4¢ (Clean)
HEIDELBERG 30¢ case	Scrap Aluminum 4-10¢ lb. (Clean)
TALL EXPORTS 30¢ case	Mixed Alum Cans 9¢ lb.
STUBBIES 30¢ case	Copper 25¢ lb
	Iron 1¢ lb.


PRICES SUBJECT TO CHANGE

HAPPY HOLIDAYS!!!

During this holiday season, I want to thank my many friends that have stopped by to Recycle with us. I am asking all readers to carefully look at this add and see if you have recycleable products that we can buy from you. Remember we should not add to the ground products we can recycle, as it adds more fuel to our dumps, which can change into toxic gases, which leak into the environment that surrounds us, and can cause serious illness. We have hats to give to our customers as long as they last. First come First served, one per family! Sorry!



**Parkrimp Hydraulic Hose Assemblies**



**PARKER NO-SKIVE**

**NOW IN STOCK**

**Gig Harbor Machine Works**

857-4668      15115 - 118th Ave. NW  
Gig Harbor, WA 98335



## To All Archers In The Key Peninsula

There is now a club meeting on the 1st and 3rd Tuesday of every month at 7:30 pm at the Key Peninsula Civic Center. For more information call 884-4364 or 884-3456.

### Longbranch Calendar

- Nov. 1 - 9 am Choir, Bellringers
- Nov. 3 - 10 am Bible study, 11 am Rev. Tom Fukuyama, Longbranch Church
- Nov. 5 - VOTE
- Nov. 7 - Choir, Bellringers
- Nov. 8 - Bazaar setup 10 am
- Nov. 9 - HOLIDAY BAZAAR, 11 am - 2 pm, HOT lunch, coffee, dessert, craft table, baked goods, candy, white elephants
- Nov. 10 - 10 am Bible Study, 11 am Rev. Milt Andrews of the Hillside Community Church
- Nov. 11 - Improvement Club 7:30 pm
- Nov. 12 - PENINSULA SOCIAL CLUB, 6:30 pm Potluck, 7:30 pm Slides of Virgin Islands
- Nov. 13 - PENINSULA NEIGHBORS, 10 am Hostesses: Chita Hurt and Evelyn Evans

- Nov. 18 - Ruth Circle, noon
- Nov. 20 - Ladies Aid, noon at church
- Nov. 21 - THANKSGIVING DINNER by Key Peninsula Senior Society at Civic Center for all seniors, Longbranch Church Bellringers will be on the program.
- Nov. 24 - Bible Study, 10 am, Church Service, Rev. Fukuyama, 11 am
- Nov. 26 - NUTRITION, noon, lunch all seniors welcome, 884-3716
- Nov. 28 - HAPPY THANKSGIVING!

### ANNUAL HOLIDAY BAZAAR

The Annual Holiday Bazaar will be held by Longbranch Church on Saturday, Nov. 9 from 11 am to 2 pm. Hot lunch, dessert and coffee, and crafts, plants, baked goods, etc. will be for sale. The public is invited.

### Evergreen PTS

How can parents help their children at home with math? After a short business meeting, the Evergreen Elementary Eagle Boosters will be learning some new techniques on Nov. 4 at 7 pm at Evergreen School. Parents, teachers and interested community members are welcome. Evergreen's first and second grade teachers, Delores Jensen and Linda Shelley will make a presentation describing the math program at Evergreen and sharing tips on how parents can help at home. Childcare and refreshments will be provided.

Another subject to be included in the Nov. 4 Eagle Boosters meeting includes a report on the candle sale fund-raising project. The money raised from this candle sale will go directly into increasing books in Evergreen's library and the school computer software library. Thanks go to the community and parents for their support on this successful

project.

Plans for a staff and community committee to review the educational specifications of the Evergreen school building are being made. The Evergreen elementary building has been recommended for complete remodeling. This parent staff committee will assess the program and projected programs to maintain the highest educational program standards at Evergreen.

Parent teacher conferences will be Nov. 4-5. The students will attend half-days to allow teachers and parents the opportunity to conference on each student's needs.

For more information: Evergreen Principal: Dave Trochim 884-3393. Pres. Eagle Boosters: Jeannie Sagle 884-3161. Publicity Chrm: Helen Carlson 884-3149.

### Cooliettes Penn Ants #609

Our annual Halloween party brought out many odd characters! Chief Grayback Helen Wolniewicz did a great job of decorating and organizing the activities. Goodie potluck too! Grand Grayback Sue Dillenburg was guest of honor, making her official visit. Seagull of Gig Harbor and Slyfoxes from Fox Island also joined in the fun.

The trip to the Mall with residents of Cottesmore Nursing Facility was a rewarding experience. A lunch at O'Farrells with shopping afterward, wearing hats from the fire dept. exhibits and with balloons tied to wheel chairs brought many giggles.

- Nov. 12 - Visit to Cottesmore with cookies for birthdays. Plan to stay for craft work. Meet at 12:00 at Walt's.
- Nov. 21 - Regular meeting at 7:30
- Nov. 26 - Visit to Navy Hospital with refreshments. Meet at Walt's at 11:30.

### VFW and Auxiliary News Pancake Breakfast

A pancake breakfast will be held Sunday, Nov. 10, 8 am - 2 pm, in the Gold Room of the Key Peninsula Civic Center.

Adults \$3.50, 10 and under \$1.50. See you there!



SUPERIOR  
SIGN CO.

884-2008  
377-8141

Want the  
**COUNTRY LOOK**  
But have a Church Mouse budget?  
Here are three easy projects  
that will cost less than  
**\$10<sup>00</sup>!**

- \*Stencil a border around a room.
  - \*Renovate an old lampshade with a new, pierced cover.
  - \*Fill a basket with weeds (they're free!) and tuck in a few colorful dried flowers.
- We have instruction books, patterns, materials and helpful advice to make your project a success.

The Country  
Mouse

10 a.m.-6 p.m.  
Tues. through Sat.  
884-2662  
In the red barn  
1/2 mi. south of  
Key Center



### MOSTLY BOOKS

Gig Harbor

Visit our store  
during  
"Good Old Days"

Drawings Everyday

On the waterfront  
1/4 block from blinker.

851-3219



# K.C.

# CORRAL

## MOVIE MAGIC

KC CORRAL 884-3002

### NOVEMBER SPECIAL

**MEMBERS:** Tuesdays & Thursdays

1st Movie Regular Price

2nd Movie 50¢

**NON MEMBERS:** Tuesdays & Thursdays

1st Movie Regular Price

2nd Movie \$1.00

### Movie Rentals

Monday - Thursday

\$2.00 - 1st movie

2 or more \$1.50 each

Friday - Saturday

\$2.95 - 1st movie

2 or more \$2.50 each

Non-Members Mon-Thurs \$2.95 ea. Fri & Sat \$3.95 ea

## Collins Chiropractic Center

*Dr. Collins is available 6 days a week*

Key Center

Tues. & Thurs.

KC Corral  
884-3040

Port Orchard

Mon., Wed., Fri., Sat.

2914 Mitchell Rd.  
876-6888

2914 Mitchell Rd.



884-3304

TACOMA 572-6996

COLONY  
Real Estate Inc.

## K. C. CORRAL, KEY LAND, HOMES FARMS, AND WATERFRONT



*Call your local professional Realtor, who knows the values in your area and can help you with your Real Estate needs.*

- Chuck Hayward 884-3864
- Joyce Tovey 884-3878
- Richard Raschle 884-3798
- Doris Maffei 884-3802
- Gary Anderson 884-2912

TACOMA TELCO  
CREDIT UNION

Peninsula Branch, K.C. Corral  
Key Center, WA  
884-9266



## "We couldn't have done it without our credit union."

It's what we've always dreamed of... retire and see the country. It took years to get this far, but our credit union was always there to help along the way. Their good advice showed us how to build a savings program that was safe, reliable and profitable. With long-term certificates, money market accounts and IRAs, we've reached our goal. But we're not stopping now! Thanks to our credit union we'll continue to get the most for our money... wherever we may happen to be!



For investment accounts...  
**Count on your credit union.**  
It's where you belong.



**KPCC Bingo**

Inga Halmes is taking a sabbatical from Bingo and in the interim Lenore Jameson will serve as Bingo manager. Games will remain the same, as will prizes.

Attendance has been averaging between 60 and 70 each evening and an increase would be appreciated. There will be no Bingo on November 27, the night before Thanksgiving. Mark your calendars accordingly.

**Senior Society**

By the time you read this we will have had our annual Halloween Party. It is always fun and a good time should be had this year.

Now comes November and all the doings we are planning. This is the fifth year we will be serving dinner at the Civic Center for our senior friends. On November 21, we will have turkey and all the trimmings. Georgia Gillis is the chairperson of the dinner. She and her committees will provide not only good eating, but games and fun for all. As this is the month of Thanksgiving, there will be only three meetings:

- Nov. 7 - Business Meeting
- Nov. 14 - Foot care
- Nov. 21 - Thanksgiving dinner for all Peninsula seniors
- Nov. 28 - Have a nice Thanksgiving

It will be well to mention that on December 7, we will have a table at the Craft Fair.

**Orthopedic News**

Dr. Penrose Orthopedic Guild will meet November 14 at the home of Mrs. Robert Rodine in Longbranch. Cohostesses for the noon luncheon meeting will be Mrs. T. E. Levick and Mrs. Charles W. Bash. The group will make final plans for the guild's annual Christmas auction to be held at Faraway in early December.

**Vaughn Garden Club**

Vaughn Garden Club will be held on Nov. 20 at Mary Cochran's home. Cohostesses are Barbara Pike and Ruth Little. The program will be on Christmas decorations.

**Twilite Dance Club**

The November 23 dance will feature "Gary, Diane and Co." for some great music and entertainment by Diane - the time is 9 pm - 1 am. Coffee is free and delicious hamburgers are served at intermission. Hope some of you who like to dance and have fun will join us.

**Puppet Show**

The Pierce County Library Puppets will present the GINGERBREAD BOY and HENNY PENNY on Wednesday, November 20, at 7 pm, Key Center Library. Be sure to mark this important date on your calendar!

**VPTO News**

The Vaughn Parent Teacher Organization meeting was called to order Oct. 8 at 7 pm by President Daphne Daus.

Girl Scout Troop 5-20 lead the flag salute.

Minutes from the May 1, 1985 meeting were read by Secretary Phyllis Jardin.

Treasurer Bunny Letillier reported a balance of \$1,227.38. Also, a profit of \$3,715.28 will be made from the Fischer cheese and sausage sales after delivery.

Craft meetings are being held for Santa's Secret Shop. For information call Shirley Frame at 884-4864.

Jim Falocchio presented a plan for the 5th grade classes to use profits from the ice cream sales to enable them to go to Camp Coleman May 7, 8 and 9. A motion was made and carried.

Items were presented as amendments of the V.P.T.O. by-laws. A motion was made and carried.

Patti Cox made a motion to have the Pacific Science Center present Science On Wheels to the students. Comets and planets will be the subject. The cost is \$450. Motion was carried. Arrangements will be made for sometime in May.

Nutrition Consultant Verna Bergman spoke on elementary-age children and nutrition.

**KEY CENTER NATIONAL AUTO PARTS**

**MACHINE SHOP SERVICES**

- DRUM & ROTOR TURNING
- VALVE SHOP
- GLASS BEAD
- HOT TANK CLEANING
- SURFACING

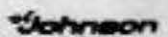
Located at Key Center Intersection  
884-3307

Bankcards Welcome



Mon-Fri 8:30-7  
Sat 8:30-6  
Sun 10-4

**FREE ALTERNATOR & STARTER TESTING**



**WINTERIZE NOW!**



**SALTY BOATS**

COMPLETE MAINTENANCE, SERVICE & REPAIR DEPT. FOR INBOARD, INBOARD/OUTBOARD & OUTBOARD MOTORS & DRIVES. FULL SERVICE FOR OMC, VOLVO, JOHNSON AND EVINRUDE MOTORS.

**CALKINS TRAILERS**

**CLOSE OUT**

ON 1985 JOHNSON OUTBOARD MOTORS

Open Mon. - Fri.: 8 a.m. to 6 p.m.  
Sat.: 9 a.m. to 5 p.m.

1310 Commercial, Steilacoom, WA 98388

**(206) 584-4177**



**LONGBRANCH MERCANTILE**  
 FINE FOODS  
 MEATS-PRODUCE-GROCERIES  
 GAS-OIL-BEVERAGES  
 Mon.-Fri.: 6 a.m.-9 p.m.  
 Sat. & Sun.: 8 a.m.-8 p.m. 884-3721

**L.E. Jopp Builders**  
**PASS THE LEVY**  
 Carpenter Work  
 Building  
 Complete Work  
 884-3841  
 LICENSED & BONDED CALL COLLECT

**ALCOHOLICS ANONYMOUS**  
 MEETING HELD AT  
 KEY PENINSULA MIDDLE SCHOOL  
 Mon. & Fri., 8 p.m.  
 Call Ann 884-2626

**Randy's Bulldozing**  
 4 in One Bucket • Land Clearing • Stump Haul  
 Excavating • Dump Truck • Roads Punched  
 • GENERAL DOZING •  
 RANDY NIMRICK  
 HARRY NIMRICK  
 Rt. 4, Box 4783-1  
 Gig Harbor, WA 98335  
 1-857-2625  
 1-884-2590

BULLDOZING BACK-HOE  
 GRAVEL AND FILL DIRT  
 LOG BULKHEADS  
**PASS THE LEVY**  
 Dave Johnson  
 PHONE 884-3111  
 Dave Johnson  
 PHONE 884-2607

**Dori Richards**  
 Oil Painting with Palette Knife  
 CLASSES AND VISITS  
 Tuesday 12 to 3 p.m.  
 Wednesday 1 to 4 p.m.  
 Thursday 6 to 9 p.m.  
**LOG HOUSE STUDIO**  
 807 - 206th Ave. Ct. KPN  
 LAKEBAY, WASHINGTON 98349  
 884-4822

Specializing in Custom Homes  
**R & M ELECTRIC**  
 RESIDENTIAL AND COMMERCIAL WIRING  
 MIKE NIEMANN 884-3778  
 ROY DANFORTH 884-2868  
 P. O. Box 48 • Burley, WA 98322

Tax Services Auditing  
 Financial Statements Bookkeeping  
**KEY ACCOUNTING**  
 Fran Kent, Accountant  
 6706 Key Peninsula Hwy. S  
 Longbranch, WA 98331  
 Phone (206) 884-3862

**PASS THE LEVY**  
**active construction inc.**  
 (206) 851-4646  
 AC-TV-VC-16411

**Longbranch Community Church**  
 Bible Study: 10 a.m.  
 Worship: 11 a.m.  
 Longbranch, Wa.  
 Rev. Tom Pukuyama, Pastor, 565-5128

Handcrafts Gifts  
 Open Sat. & Sun. 10 to 5  
**Grandma's Cupboard**  
 1 Mile No. Key Center SR. 302  
 884-2644

FAMILY DINING  
 Overlooking Henderson Bay  
 Homemade Pies and Cinnamon Rolls  
**Pearl's by the sea**  
 Tacoma-Bremerton Highway 16. Take Purdy Exit. CALL: 857-2241  
 Mon.-Thurs. - 7:00 a.m. - 12 p.m.  
 Fri.-Sat. - 7:00 a.m. - 1 a.m.  
 Sunday - 9:00 a.m. - 12 p.m.

**Vaughn Community Church**  
 "The Chapel by the Sea"  
 — NEW HOURS FOR SERVICES —  
 9:00 A.M. - Sunday School  
 10:15 A.M. - Morning Worship  
 6:00 P.M. - Evening Service  
 Pastor Chuck Altig 884-2269—884-3540  
 Nursery Provided  
 "Worship With Us!"

**DAVID C. BARTON**  
 CERTIFIED FINANCIAL PLANNER  
 "Complete financial planning services specializing in retirement planning, education funding, and tax advantaged investments including TSAS, IRA's and KEOGH's."  
 P.O. Box 842  
 Gig Harbor, Wa. 98335  
 857-5767  
 FINANCIAL NETWORK INVESTMENT CORPORATION

**PENINSULA KEY & SECURITY Locksmith**  
 851-9620  
 7825 46th Ave. NW  
 (Rosedale and 49th)  
 Monday thru Saturday 9 a.m. to 5 p.m.



**WALT'S FINE FOODS**

Look for Weekly In-store Specials

FRESH PRODUCE

QUALITY MEATS

In Downtown Key Center

884-3325

dump truck  
backhoe  
grader  
blade

GRADER SERVICES  
884-2271

**PASS THE LEVY**



top soil  
road  
rock  
dump truck

PHIL RADCLIFFE  
Route 1, box 90c  
Keyway, wa 98349

**Longbranch Automotive Center**

AUTO REPAIR JERRY HANSEN  
+ DOMESTIC Longbranch, WA.  
+ FOREIGN South of the Church  
(206) 884-3272

Residential Commercial

**S.J. Akins Construction**

Sam Akins  
4819 Key Peninsula Hwy. So.  
Longbranch, WA 98351  
884-3522

New Construction Remodeling

**HOME FEED & GROCERY**

OPEN 9-9 WEEKDAYS 10-7 SUNDAYS  
884-2321

Featuring "Choice Beef"  
Fresh Produce  
Fishers Feed  
Friendly Service

**ROOF & GUTTER CLEANING**

Moss Removal & Prevention

Chimney Sweep

**JERRY FROST**  
858-6960

P.O. Box 11271  
TACOMA, WA 98411

NEW HOMES  
APARTMENTS  
REMODEL



**S & E Electric, Inc.**

ELECTRICAL CONTRACTORS  
TACOMA SHOP 272-5813

GIG HARBOR  
KEITH STANTON  
857-4793

KEY CENTER  
JIM LETELLIER  
884-3132

**Minter Creek Drilling**

Complete Water Systems  
Residential • Commercial

- Pumps -  
Sales • Service • Installation  
- Test Drilling -

State Licensed & Bonded  
**857-4609** Free Estimates

**MASTER SHARPENING**

10% off

23002  
Silverbow Road,  
Gig Harbor, WA  
98335

ALL SHARPENING

WITH THIS AD

**884-2877**

**"THE STUMP MAN"**



If you can't dig 'em out  
or blast 'em out, call me  
Power stump machine removes all sizes

LOCALLY OWNED AND OPERATED  
FREE ESTIMATES  
857-6665  
876-3642

**BETTY'S CONSIGNMENTS**

K.C. CORRAL

Quality Used Clothing, Toys  
& Crafts — Infant to Adult

LARGE SELECTION OF CLOTHING

**35% OFF**

HOURS:  
9:30-5:30 Mon., Tues. & Fri.  
9:30-5:00 Wed. & Sat.

NEEDED:  
Ladies & Mens  
Larger Size  
Clothing

**Lucile's Barber Shop**

Hours: Tuesday thru Saturday  
10:00 a.m. - 5:00 p.m.

One short mile south of  
Rocky Bay Health Care Center  
on Hwy. 302 going to Shelton

884-3732

**HOME PORT**

Restaurant & Lounge

Under New Management

Jack & Leslie Beecher

Home, WA 884-3743

**Key Peninsula Lutheran Church**

REV ED WAGNER

Key Peninsula Highway  
& Lackey Road



SUNDAY SCHOOL: 9:15 a.m.

WORSHIP SERVICE: 10:30am

DUANE G. FLEMING

**Cascade Insurance Underwriters, Inc.**

2200 6TH AVENUE • TACOMA, WASHINGTON 98403

AC 206/627-3133

Residence 884-3340

We do **Alterations**



We also  
replace  
zippers

**Highland Cleaners**

7110 6th Ave., Tacoma

564-6471

**BELFAIR FLEA MARKET**

(Next door to Belfair Thriftway)

OPEN EVERY WEEKEND  
SAT. 9-5 SUN. 10-5

All types of furniture and  
appliances available in our  
**6,000 SQ. FT. FLEA MARKET**  
**3 CASH PRIZES DAILY!**

WE BUY ALL GOOD HOUSEHOLD ITEMS  
INCLUDING TOOLS, FURNITURE & APPLIANCES

For information call

**898-2818**

**TAYLOR'S COMMERCIAL REFRIGERATION SERVICE**

**Walk-in Coolers & Freezers  
Ice Machine & Restaurant  
Equipment.**

**Heating & Air Conditioning**

**884-4749**



4-H Club News

The Key Peninsula 4-H Club began its new year in October by signing up 13 members in a variety of projects. Added to Beef, Swine, Goat, Rabbit, Rocketry, Computers, Cooking, Sewing, Gardening and Teen Leadership this year, are Sheep, Dog, and Archery. This keeps 6 project leaders busy most of the year.

The club meets the first Thursday of each month at 4 pm at the Civic Center. (Thanks!) Project meetings are the third Thursday at same time and place. Anyone interested in joining or helping out in leadership capacity should call Norma Stencil at 884-3594. We'd like to see the club grow and become a bigger part of our community.

Explorer Scouts

The Explorers currently have nine members, five of whom have begun a training course in Search and Rescue. The training involves six weekend courses and is in Silverdale, Wa. The trainees will become certified in January. The Explorer Search and Rescue Program provides trained personnel to conduct search, rescue, recovery and evacuation operations. The program also provides meaningful training and leadership opportunities for young people.

On October 16, Mr. Detienne transferred his position as Scout Coordinator to Mr. Trent. He retained the office of Executive Officer.

Current Explorer officers are Dawn Kester, Chairman, Craig Smith, Secretary, Vincent Reyes, Treasurer, Gordon Detienne, 1st. Vice-President and Shawn Worden, 2nd. Vice-President.

Continued From Page 29

In order to avoid food poisoning, the bacteria count of perishable foods must be kept low, Fuste' notes. Bacteria thrive between 45°F and 115°F. The longer perishable foods remain at room temperature, the higher the bacteria count will be.

Foods to be used in packed lunches should be cooled quickly after cooking and kept refrigerated until the lunch is made.

To be kept cold without refrigeration, make the sandwich or salad ahead of time and freeze it. The frozen sandwich or salad will thaw in time for lunch and it will keep the rest of the lunch cool until then.

Perishable sandwich fillings that freeze well include sliced or ground meat and poultry, fish and egg yolk. Fruit salads with a base of cream cheese, cottage cheese, whipped cream or mayonnaise can also be frozen in individual servings and used to keep the lunch cold.

Don't forget Nov. 5

COST OF ADS 12c a Word

CLASSIFIED ADS

ADS DUE BY 15th OF MONTH 884-3456 P. O. Box 3 Vaughn, WA 98394

JOHN, YOU BEAST! Either you vote for the KP Park and Civic Center Levy, Nov. 5th, or I'm going home to mother!! (signed) MARCIA.

BUSINESS SERVICES

WATKINS PRODUCTS now available on Key Peninsula. Try our famous vanilla. Have a get acquainted party. Need extra income, call for more information. Marvin or Myrtle Keizur 884-3566

MARCIA. You're still bent out of shape. I'll vote for the levy, and I'm going to see your mother to see if she can patch things up for us. (signed) JOHN.

INSTRUCTION

AEROBICS CLASSES: The Civic Center in Vaughn. Monday, Wednesday, Friday: 9-10 a.m.; Tuesday, Thursday: 6-7 p.m., Gym. All ages and abilities. Babysitting available for a nominal fee. 884-3642 for further information.

AUTOMOTIVE

1978 DATSUN 510 WAGON; green, one owner, excellent condition, \$1300 or best offer. 884-2359.

HERBAL INTEREST home demonstration or mail order. Learn how to make forgotten crafts such as potpourri, rosewater, herb vinegar or drying your own herbs and more from our demonstrations, or order supplies by mail. Herbal Interest P. O. Box 223, Burley, Wash. 98322 or call 857-2657

MISCELLANEOUS

HELP WANTED. A worthwhile challenge to people of the Key Peninsula area. Qualifications: Registered Voters who reside in the above area. Fringe Benefits: Pride and satisfaction in your Fire Department, Pierce Fire District #16. Report to your local precinct between 7:00 A.M. and 8:00 P.M. on Nov. 5th. Job Description: Vote YES November 5th for Fire District #16. This is an equal opportunity project and both sexes are urged to participate.

LONGBRANCH COOPERATIVE NURSERY SCHOOL: Be a part of your child's pre-school years. For information for Fall registration, call Maggie 884-3462

MARCIA, you're always bent out of shape...OK, OK, I'll vote for the levy...but who is your mother, if you really had one? (signed) JOHN.

FLOOR COVERINGS INSTALLED: Carpet, linoleum, tile, parquet, ceramics. Orrie Mobre, 884-3852

CHAINSAW REPAIR: New chain and grinding services. 884-4436

ROTOTILLING & MINI HOE: Ralph Carlson, 884-2644

JOHN, you better vote for that levy, and you are STILL a BEAST! Mother models for Fredericks of Hollywood, and works in their Federal Way store. Goodbye forever (again)...MARCIA.

LEARN TO WEAVE: 45 inch floor loom for rent. \$150 per year, includes 5 hours of professional instruction in set-up and weaving. Rivkah, 884-3070.

BULLDOZER FOR HIRE. Land clearing, road building, logging. Reasonable rates by the hour or by the job. 884-4436, 575-1156.

TO MARCIA, (VIA CABLEGRAM)...John and I are having a wonderful time in Bermuda; you should have told me about him sooner...be happy with your yoga (signed) MOTHER. P.S., Congratulations on passing your levy election Nov. 5th!



# KEY PENINSULA CIVIC CENTER EVENTS November

November 1985

KEY PENINSULA NEWS

Page 40

Sunday	Monday	Tuesday	Wednesday	Thursday	Friday	Saturday
					<b>1</b>  Aerobics - 9-10 am Grange - 7-11 pm	RENO NIGHT 4 - Midnight
<b>3</b>  Volleyball 9:30 - 12:30	<b>4</b>  Aerobics - 9-10 Boy Scouts - 3:30 - 5 pm	<b>5</b>  Aerobics - 6-7 pm Karate - 7-8 pm Brownies - 3:30 - 5 pm Girl Scouts 7:15 - 8:15 pm K.P. Archers - 7:30	<b>6</b>  Aerobics - 9-10 am FUN NIGHT - 7:00 pm Park Board - 7:30 pm	<b>7</b>  Seniors - 12-4 pm Aerobics - 6-7 pm Karate - 7-8 pm 4-H Club - 4 - 5:30 pm Explorers - 7 - 8:30 pm	<b>8</b>  Aerobics - 9-10 am	<b>9</b>  Aerobics - 8:15 - 9:15 am
<b>10</b>  VFW Breakfast 8 - 2 pm	<b>11</b>  Aerobics - 9-10 Volleyball - 7:30 Boy Scout - 3:30 - 5 pm VFW 8 - 10 PM VFW AUX 8 - 10 AM	<b>12</b>  Aerobics - 6-7 pm Karate - 7-8 pm Exec. Board - 7:30 pm Brownies - 3:30 - 5 pm	<b>13</b>  Aerobics - 9-10 am Park Board - 7:30 pm FUN NIGHT - 7:00 pm	<b>14</b>  KPCC Board - 7:30 pm Senior - 12-4 pm Aerobics - 6-7 pm Karate - 7-8 pm Explorers - 7 - 8:30 pm	<b>15</b>  Aerobics - 9-10 am Skating - 6-9 pm	<b>16</b>  Karate Tourney - 9 - 9 pm
<b>17</b>  Volleyball - 9:30 - 12:30	<b>18</b>  Aerobics - 9-10 Boy Scouts - 3:30 - 5 pm Volleyball - 7:30 - 11 pm	<b>19</b>  Aerobics - 6-7 pm Karate - 7-8 pm Brownies - 3:30 - 5 pm Girl Scouts - 7:15 - 8:15 pm K.P. Archers - 7:30	<b>20</b>  Aerobics - 9-10 am FUN NIGHT - 7:00 pm	<b>21</b>  Aerobics - 6-7 pm Karate - 7-8 pm 4-H - 4 - 5:30 pm Seniors Turkey Dinner - Noon - 7 Explorers - 7 - 8:30 pm Cootiettes - 7-11 pm	<b>22</b>  Aerobics - 9-10 am Skating - 6-9 pm VCS Skate - 1 - 3 pm	<b>23</b>  Aerobics - 8:15 - 9:15 am Twilite Dance - 9-1:00 am
<b>24</b>  Volleyball - 9:30 - 12:30	<b>25</b>  Aerobics - 9-10 Boy Scouts - 3:30 - 5 pm Volleyball - 7:30 - 11 pm	<b>26</b>  Aerobics - 6-7 pm Karate - 7-8 pm Brownies - 3:30 - 5 pm Girl Scouts - 7 7:15 - 8:15 pm	<b>27</b>  NO FUN NIGHT	<b>28</b>  HAPPY THANKSGIVING	<b>29</b>  Aerobics - 9 - 10 am Skating - 6 - 9 pm	<b>30</b>  Aerobics - 8:15 - 9:15 am Clark White Community Meeting - 8:30 pm