

Your community  
en camera...  
pages 6 through 9  
and 12

# Key Peninsula NEWS

Non-profit Org.  
U.S. Postage Paid  
Permit No. 2  
Vaughn, WA 98394

Box Holder

Volume 16 Issue 18  
Circulation 6000

September 14  
1988

Working together for the social and economic good of our Key Peninsula

## Now is the time ... to make your- self heard

By Keith Stiles

Its election time again and Key Peninsula citizens will go to the polls next Tuesday, September 20, to deal with a number of ballot issues of local and regional importance.

Among the elective office races the most interest appears to center around the two available seats in the 26th District for the Washington House of Representatives. Those seats are currently held by Wes Pruitt of Gig Harbor and Ron Meyers of Port Orchard - both Democrats and both running in this election. Also at stake are a number of judicial positions, Pierce County Executive and the selection of a number of other candidates for state and federal office. Many of the candidates on the September 20 ballot appeared at the Civic Center on "Candidate's Night" August 23.

The major local proposition on the ballot is, of course, the proposed two-year Operation and Maintenance Levy to pro-

vide for the continued functioning of the Key Peninsula Civic Center building, facilities and grounds, and the continued operation of Volunteer Park. Both the Volunteer Park and the Civic Center have been barely surviving, since a levy failure a year ago, mostly by the use of final reserve funds, volunteer effort and donations. Leaders of both organizations have indicated they see no clear way to keep these public facilities open if the levy should fail on September 20. None of them wish to talk about padlocking either the Civic Center or the park but insurance and other costs, which can only be met with cash payments, require the sort of funding that only a levy collection appears able to provide. To operate the Civic Center and the park for the next two years, the Park Board is asking local voters to provide funds which are estimated to amount to about \$10 total per average appraised-value-household on the Key Peninsula. Please vote September 20.



Pierce County Deputy Sheriff John Hendrickson with the new Jeep Cherokee assigned to the Key Peninsula area. KP NEWS photo by Keith Stiles

## Citizens Against Crime

by S. Retherford

Since April 25, 1988, when we commenced phone monitoring twelve hours daily at the Peninsula Detachment of the Pierce County Sheriff's office in Purdy, more than 3,329 routine calls have been taken. Of those, 745 were priority calls which contributed substantially to 25 felony arrests. Two known drug pushers have moved out of the area and CAC likes to think it contributed to that also.

A class is starting soon to train CAC volunteers for positions as Home and Business Security Checkers or teachers. Eight hours of class work is required on one Saturday in October.

It is understood that Gig Harbor Peninsula is now preparing to join CAC officially.

At the September 1 meeting a nominating committee submitted nominees for CAC office for the coming year. Voted in unanimously were: Hugh McMillan, President, Dick Gormly, Vice President for Key Peninsula; Gordon Wohlfeil, Vice President for Gig Harbor; Joyce Case, Secretary; and Henry Stock, Treasurer.

The next meeting of CAC will be at 7 pm on October 6 in the Gold Room of the Civic Center in Vaughn. See you there.

## Flavor of Fall Dinner/ Auction almost here!



Dinner Auction committee members (left to right) Vicki Henschel, Margo Fleming, Brynn Rydell, Claudia Loy, Shirley Olson and Ann Larson hold a round-table discussion on final details for the October 1 "Flavor of Fall" Dinner/Auction to be held at the Civic Center. Tickets are available at Sunnycrest Nursery or from any of the above people, and are \$35 a couple which includes \$5 auction script. There is to be a no-host bar at 5:30, dinner at 7 and the auction at 8 pm. The public is encouraged to attend the auction only if they wish. See ad on page 18 for more details.

KP News photo by Lee Stiles

## A message from the Prez...

As president of the Civic Center Association I encourage everyone to vote for the Park District Levy which will be on the September 20 ballot. Even though the Civic Center Association works year round to raise funds, these monies are not enough to pay for all the basic expenses a building the size of the Center requires.

The Park Board has put before you a levy that will barely cover the day-to-day costs of the Center and Volunteer Park (insurance, electricity, heat, wages, repairs). But with those costs taken care of the Civic Center Association can start to use its funds to bring new programs to the Center. I personally would like to see the Association sponsor such events as plays and concerts.

Please vote yes for the Park District Levy on September 20; it's a small investment in keeping our community a unique place in which to live.

Dale Loy

# Key Peninsula NEWS

PO Box 3, Vaughn, WA 98394

**884-4699**

Published twice monthly by  
Key Peninsula Civic Center Assn.

**Mng. Editor:** Pauline Finn  
**Asst. to Editor:** Karen Laatz  
**Ad Lay-out and Prodn:** Lee Stiles  
**Photographer:** Lee Stiles  
**Bookkeeper:** Ruth Updike  
**Ad Sales:** Linda & Dan Orme  
**Reporter and Worthly Advisor:** Keith Stiles

**Production staff:**  
Marian Wagner, Sally Cornman,  
Linnea Lawson, Virginia Worth,  
Allyne Woolery, Janne Dukeshier.

**Contributors:**  
Daphne Daus, Dory Meyers, Paul Cyr, Dr. Wm. Roes, Tim Kezele, Stella Retherford, Elaine Forch, Janice McMillan, Hugh McMillan, Mary Ann Huntington, Cecil Paul, Margaret Paul, Jean Humphreys, Gary Ostlund, R. Marvin Keizur.

The opinions expressed are the opinions of the writers and do not necessarily reflect the views of the publishers or the staff.

A twice-monthly non-profit newspaper, distributed free to all residents in the Key Peninsula area, supported by local merchants' advertising and staffed by volunteers. All proceeds go toward the programs of the Civic Center.

## KP NEWS Deadline

The next issue of KP NEWS will come out on **Oct 3**. Please note the deadline for notices, articles and ads for that issue is **Monday, Sept 26**.

## Ashes rummage sale

The Ladies' Auxiliary of Fire District 16 will have their Fall Rummage Sale Saturday, October 22, from 9 am 'til 4 pm at the Fire Station in Key Center. Donations of good, clean, useful clothing or any other saleable items will be gladly accepted.

Proceeds from these rummage sales are donated to the Ambulance Fund.

If you need help in delivering articles to the Fire Hall, feel free to call Marie Schwenka at 884-2221, Irma Kelly at 884-2848 or Alice Palmer at 884-3882.

## Dear Editor ...

### To the Editor

Many thanks to this wonderful community! During the past school year the Peninsula High School Scholarship Committee received, as a part of its perpetual trust fund, \$2,400 because patrons of Uddenberg's Thriftway gave their grocery receipts to the scholarship fund for PHS graduating seniors.

About five years ago some volunteers at PHS began a committee to allow the community to recognize seniors at the school as they strive for further education, whether it be to a community college, vocational school or 4-year school. Individuals and local businesses who give \$100 or more give named scholarships. They can choose the recipient and present the scholarship at an assembly in May in front of the whole student body. Those who choose to give less, or who want to give for an ongoing period, donate to the perpetual fund. This fund gives scholarships from the earned interest. The Thriftway donations are a part of the perpetual fund which last year gave \$1,800 in 13 scholarships.

Businesses and individuals from the Key Peninsula have been extra supportive of our program and we wish to thank all of you, whether you have given a scholar-

ship or a Thriftway receipt for a \$2 purchase. Please keep all of it coming for all those new seniors. Receipts are accepted at all schools in the area: Evergreen, Vaughn, Minter, Purdy and Key Peninsula Middle School.

Any parent of a PHS student is welcome to join the Scholarship Committee. We meet at Peninsula High at 10 am the first and third Tuesdays of every month. At 9 am on those same mornings we also meet with PHS principal Dele Gunnerson (first Tuesday) and Peninsula District Superintendent Tom Hulst (third Tuesday). If you have any questions about your child's education, these meetings are a great forum.

Again, thank you all for your support!  
**Sandy Newhouse**

### To the Editor

Thank you K P & Purdy stores, taverns, lounges, restaurants and KP NEWS for letting me put flyers in your windows for our Longbranch Improvement Club dances. Without your help our dances wouldn't be so good.

Also, thanks to all the people who supported and attended the dances, also all the good people who helped me plan, set up, clean up and work at the dances - you know who you are!

Thanks again,  
**John B. Glennon, Dance Chairman**  
P.S. We have one dance left - for the teenagers, September 24.

## Dr. Penrose Orthopedic Guild

Dr. Penrose Orthopedic Guild will hold its first fall meeting on Thursday, September 15 at noon at Addie McMenamin's home, 6410 Yeazell Road, Longbranch. Associate members have been invited to join the regular members in celebration of the Guild's 30th anniversary. Everyone is reminded to turn in stubs and monies from the TOA's Puyallup Fair car raffle tickets at this time.

## Fender Benders to rock'em at "Can" Dance

The Fender Benders, an almost-famous 60's and 70's Rock'n'Roll band from Federal Way, have been engaged to try and rock the roof off the Civic Center in Vaughn on Saturday, September 24 from 9 pm to 1 am for the Can Dance.

The dance is open to all residents of Fire District 16 who are at least 21 years old and their invited guests. A \$1.50 savings will be made by those who buy their tickets ahead of time at Sunnycrest Nursery in Key Center for \$6 apiece - they will be \$7.50 at the door of the Civic Center.

As part of our 'can' theme, please see if you can bring a can or two of food for our Community Food Bank. Then see if you can dance all night! The dance is BYOB with free ice and coffee available.

## Key Peninsula Senior Society

by Martha Applegate

World traveler Marjorie Kloepfel, from Fox Island, will speak to the Senior Society on September 22. She will show slides on Brazil, highlighting the Elder Hostel program.

The program will follow the regular Thursday potluck luncheon at the Civic Center. All seniors are welcome.

## Neighbor to Neighbor news

by Jim Updike

On Tuesday, September 7 the Advisory Committee of the Neighbor to Neighbor Project met in the Gold Room of the KP Civic Center.

This project is one of several functions of the Area Agency on Aging in Pierce County. The Advisory Committee's monthly meeting is usually held in Tacoma. The committee consists of elected local representatives, NTN staff, community organizers and Vista assistants. Key Peninsula's elected representatives are Arlene Randall and Jean Humphreys.

Neighbor to Neighbor works to serve the frail and elderly, particularly if isolated, to be sure these persons receive the full services they need and to which they are entitled.

### To the Editor:

I'm writing a letter regarding the importance of our Volunteer Park here on the Peninsula. My daughter was recently invited to a family gathering and birthday for one of her friends. It was being held at Volunteer Park. When I dropped my daughter off and was driving out, it dawned on me what a wonderful idea to have a birthday party there. The lawn was nice and green, the trees were beautiful, the area is fenced for safety of children. It made me think of how many years the park has been here and that my family has never taken advantage of it. I always believed it was just for ball games, soccer and other sports.

The park is here for the residents of the Peninsula to use. Take advantage and see exactly what the Peninsula has to offer us. As for myself, my daughter's birthday is coming in September - you can surely bet where her party will be. Vote for the levy September 20!

**Patty S. Danza**



## Fire District 16 update

Warm and dry summer weather plus tourists, traffic and a major holiday all served to keep Fire District 16 very busy during August and the first five days of September. All together the department responded to 85 aid calls, 56 fire calls, 17 auto accident calls and four service calls. Included in the aid calls were two attempted suicides, serious problems resulting from the accidental ingestion of wrong medicines, bee stings, lawnmower injuries and injuries resulting from fights. Autos ended up hitting other autos, trees, deer, ditches, and went over embankments and into streams. Some campers managed to set their tent on fire in the middle of the night, escaping without injury but also without a tent.

Over the Labor Day holiday Fire District 16 transported seven people to the hospital, three more went by private vehicle and one person was rushed there by MAST helicopter. By the end of the holiday on September 5 the yearly total for District emergency responses was 652 calls - or an average of more than 2 and one-half calls per day.

Fire District 16 is currently making its contribution to state mutual aid, assisting with the terrible fires in Eastern Washington. Tim Lemon is over there serving as supervisor of the Pierce County fire crew. He was accompanied by Dennis Elliott, Peter Kauppila, Paul Bosch, Derek Ollom and Robert Bosch. John Gallup and Tim Lique were scheduled to join the effort, replacing Bosch and Kauppila. The District also contributed equipment, sending over the tanker truck from Station 5 and the department's Suburban Wagon for transportation.

## Key Peninsula Social Club

by Stella Retherford

The Key Peninsula Social Club opened its fall series of meetings on September 6 with a potluck dinner and guest speaker. Gary Skow and associate, Judy Paulson, were present at the dinner and Gary, a representative of the Washington State Shellfish Laboratory at the University of Washington, showed slides and clarified details of red tides and shellfish poisoning in Puget Sound.

The October 4 meeting will feature Rivkah Sweedler and reporter for the Gateway Julie Staggers who are developing a slide show and presentation on Home as a part of the Centennial Celebration. Home residents will be asked for help in identifying people and houses in old pictures.

The Key Peninsula Social Club meets during winter on the first Tuesday of the month at the Longbranch Church to consider issues of importance to the Peninsula. Potluck dinner is at 6:30 pm with the business meeting at 7:30 pm. All interested persons are invited to attend.

## L'branch Improvement Club to learn future of McNeil

At the September meeting of the Longbranch Improvement Club a representative of Jones & Stokes Associates, Inc., an environmental planning group from Bellevue, will explain the plans now being developed by the Department of Corrections for upgrading and expansion of the prison on McNeil Island. Non-members who are interested in learning about these plans will be welcome guests. The meeting will be held on Wednesday, September 21 at 7:30 pm at the Clubhouse on Key Peninsula Highway.

## Peninsula School District Community Ed fall schedule

The Peninsula School District's Community Education Program begins September 26 and will run eight weeks.

Classes being offered this year include: Automotive, Chinese Cooking, Dog Obedience, Exercise, Realizing Your Potential, Child & Adult Karate, Oil Painting, Watercolor, Stencilling, Stained Glass, Quilting, Ballroom and

## Longbranch Salmon Derby time

The annual Longbranch Salmon Derby, sponsored by the Longbranch Improvement Club, is scheduled for Saturday and Sunday, October 1 and 2, according to Derby Chairman Glen Miller. Weigh-in will be held at the Clubhouse on Key Peninsula Highway both days with prizes for the largest fish to be awarded at 2:30 pm on Sunday. Shuttle service will be provided from the Longbranch dock to the Clubhouse from 5 am to 4 pm on Saturday and from 5 am to 2 pm on Sunday. Breakfast will be available both days starting at 5 am and hot sandwiches will be available later in the day.

Top prize for the largest salmon is \$250 and second prize is \$100. The person who catches the heaviest scrap fish will receive a \$50 savings bond from Puget Sound Bank in Key Center. In addition, local merchants have donated over 30 merchandise prizes and gift certificates. To be eligible for the prizes entrants must purchase their \$5 Derby tickets by September 30 from one of the following: Red Dogs, Minter Plumbing and Electric, Home Port Restaurant, KC Auto Parts, The Garden Shoppe, Lakebay Lumber Supply, The Country Mouse, Leeward Mark, Northwest Outdoors, Pleasure Craft Marina, Station Break Tavern, Key Center Hardware, DJ's Tires and Big Wheel Auto Parts. Entry tickets will also be available from 5 to 7 am both mornings of the Derby at the Longbranch Marina. Complete details and rules for the Derby can be obtained from any of the merchants listed.

In addition to Chairman Glen Miller, the Salmon Derby committee members are Tim Taylor, Mick Sanders, Phil Rome, Emery Vincze, Joe Gilfillan, Larry Newell, Buster Van Horn, Ward Jacobson and Kay Harvey.

Western Dancing plus courses in Typing and Work Perfect.

Shorter sessions are being offered for: Bread Baking, Investing and Money Management, Handwriting Analysis, Personal Color & Image, Business Communications, Business Machines and Shorthand Refresher and First Aid.

Brochures on the Community Education classes will be mailed September 9 with registration beginning that date. For more information, please call the Community Education Office at 857-3511.

## Peninsula movings and shakings.....

Thursday, September 15 ...

KPBA meets at 7:30 am at The Eatery. Political candidates will address group. KP Senior Society potluck lunch at noon in the Gold Room of the Civic Center. Dr. Penrose Orthopedic Guild lunch meeting at home of Addie McMenamin. Diabetic Support Group for diabetics and families - KP Health Center at 7 pm. Cootiettes 609 regular meeting - Civic Center at 7 pm. Horseman's Association meets at the KC Library at 7:30 pm.

Friday, September 16 ...

KP Business Assn. meets at The Eatery, 7:30 am. Bayshore Garden Club meets at Longbranch Improvement Hall at 1 pm. Family Recreation Night at Longbranch Improvement Club, 6 to 10 pm.

Saturday, September 17 ...

Twilite Dance Club - 9 pm to 1 am.

Monday, September 19 ...

Ruth Circle has noon lunch and meeting at Longbranch Church Hall. Al-Anon meets at Longbranch Improvement Club, 7 to 8 pm. KP Land Use Committee meets in the Gold Room, Civic Center at 7:30 pm.

Tuesday, September 20 ...

- VOTE !! -

Cootiettes 609 visit Retsil Veterans Home. Meet at Key Center to carpool. TOPS weigh in at 6:15 pm, meeting at 7 pm, Vaughn Church.

Wednesday, September 21 ...

Community Center, Home will have hot lunch for seniors at noon. Lions Club meets at the Huckleberry Inn at 7 pm.

Care-Givers Group meets in the Brones Room from 7 to 9 pm.

Longbranch Improvement Club meets at 7:30 pm. Program: McNeil Island.

Thursday, September 22 ...

KP Senior Society potluck lunch at noon in the Gold Room, Civic Center followed by program on Brazil and Elder Hostel program. KP Health Center Board meets at 7:30 pm.

Friday, September 23 ...

Family Recreation Night - Longbranch Improvement Club - 6 to 10 pm.

Saturday, September 24 ...

Gig Harbor Twirlers Square Dance meets at Harbor Heights School.

Teen Dance at Longbranch Improvement Club from 8 pm to 12 am.

KPCCA 'Can Dance' with the Fender Benders from 9 pm to 1 am.

Monday, September 26 ...

Angel Guild meets in the Brones Room, Civic Center at 10 am.

Al-anon meets at Longbranch Improvement Club, 7 to 8 pm.

Paul Cyr Community Forum at Civic Center at 7 pm.

Tuesday, September 27 ...

Nutrition Day noon lunch for seniors at Longbranch Church Hall.

Cootiettes 609 visit the Naval Hospital in Bremerton. Meet at Key Center to carpool.

Altrusa meets at Shoreline Restaurant at 6 pm.

TOPS weigh in at 6:15 pm, meeting at 7 pm, Vaughn Church.

Wednesday, September 28 ...

Community Center, Home has hot lunch for seniors at noon.

Thursday, September 29 ...

KPBA After Hours Social at Blundell's Chowder House, 6 to 8 pm.

Dates to mark on your calendar:

October 1 ... "Flavor of Fall" dinner/auction October 6 ... CAC meet, 7pm, Gold Room.

October 22 ... KPBA Fall Festival and Ashes Rummage Sale

## Homework Hotline

Homework Hotline is a live TV broadcast series that provides fast professional help primarily to 4th through 9th grade students with homework questions and problems. Homework Hotline's certified teachers offer help in math, algebra and language arts. College tutors from Pacific Lutheran University and the University of Puget Sound answer student callers and support their efforts. The objective is to increase sound academic support and encouragement in the homes of student viewers. Older students, and others outside our targeted range of 4th through 9th grade viewers, who have questions or problems in the subjects offered are welcome to call. Calls can be made to 596-1525 or toll free to 1-800-872-5535 from September 20 through May 25, 1989.

## Performance Circle holds auditions for "Little Women"

Auditions for Performance Circle's holiday special, "Little Women," will be held Sunday, September 18 at 5 pm and Monday, September 19 at 7 pm at the indoor theater just off Highway 16. The production calls for a large male and female cast of all ages.

No appointments or prepared monologues are necessary; auditions will be from the script but be prepared to sing, a cappella, a song of your choice.

Production will run November 17 through 27, playing Thursdays, Fridays and Saturdays at 8 pm and Sundays at 2 pm. For further info call 549-2661 or 851-PLAY.

## Total Burn Ban still on

Readers are reminded that there is still a TOTAL BAN on any form of outside burning and a total shutdown on ALL operations in the woods. This means no chainsaws, no logging and no motorized operations of any kind. The woods are also closed to hunting and similar activities. For daily updates on closings call 1-800-331-0255. (We are located in South Puget Sound zone 654.) For local questions call Fire District 16 headquarters at 884-2222. Please use extreme caution in this very dry period!

# We the People

by Paul Cyr,  
Council member,  
District 7



Last month my column was an open letter to the Department of Transportation regarding State Highway 302. Thanks to concerned citizens in the area, we are putting together a plan of action for improving this stretch of highway. Over the months ahead I hope we all see those needed improvements.

I thought this month I would focus on other roads within the Peninsula area, namely the projects scheduled for completion in the remainder of 1988 and projects anticipated for funding under the Annual Road program for 1989. Under maintenance programs, the county has just about completed its seal coat program for 1988. This consists of oil mat and gravel overlay on county roads. In 1987 this program was focussed on the Gig Harbor Peninsula, in particular the northeast quadrant of Gig Harbor including 14th Avenue Northwest, Halstrom Drive and parts of Crescent Valley Drive. In addition, areas around Artondale and Cromwell Bridge have received attention. Another program under way for 1988 is a complete asphalt overlay or repaving of sections on the Gig Harbor

and Key Peninsulas. To be specific: Project 27 - an asphalt overlay on the Fox Island Bridge Road; Project 20 - an overlay on Stone Drive Northwest across from the Tacoma-Narrows Airport; Project 18 - Key Peninsula Highway just outside the Key Center area; and Project 19 - further out, before the intersection of Lackey Road and Key Peninsula Highway. These projects are currently out for bid.

Among the Annual Road Program proposals for 1989 is one to replace Home Bridge.

District 7 will also receive its share of county-wide transportation planning funds for the development of a Pierce County transportation plan and District 7's share of spot safety improvements on County roadways, consisting of restoration or replacement of guardrails, removal of roadside obstacles and other such safety measures.

A final word about roads and other Public Works projects: Each year the Department of Public Works puts together an annual plan for improving roads throughout the county. They rely on citizen input in determining priority needs within areas of the county. If you are aware of a particular road problem, please bring it to my attention and/or to the Pierce County Public Works Department so that it may be addressed on the appropriate road schedule. I will do everything I can to assure that the needs of District 7 are met.

# Tax Tips

by R. Marvin Keizur

The Tax Court recently concluded that many married taxpayers were motivated more by the desire to avoid taxes than to make a profit when pursuing an Amway distributorship. The Tax Court cited unbusinesslike work habits and lack of honest profit objectives as reasons to disallow business expense deductions. Penalties for late filing and negligence were allowed to stand.

The Tax Court has ruled that the statute of limitations doesn't run on a tax return lost by the postal service before delivery to the IRS. The ruling came about as a result of a taxpayer filing his 1979 return in June of 1980. The return was due on June 15, 1980 and was signed and mailed June 13, 1980. A year later the IRS notified the taxpayer that his return

had never been received. The taxpayer responded by sending an unsigned copy of the return. Two months later the IRS asked the taxpayer to sign a declaration that the unsigned copy of his return was, in fact, his 1979 return. This was done. Three years later, in June 1984, the IRS mailed the taxpayer a notice of deficiency. The taxpayer claimed the statute of limitations had run out; the IRS claimed otherwise. The Tax Court ruled that a return must be signed in order to be valid. Therefore, the statute of limitations did not begin to run until the taxpayer signed the declaration in August 1981. Had the original return been sent by registered or certified mail it would have been sufficient documentation that the return had reached the IRS. But since the return was sent by regular mail, the taxpayer had to assume the risk for non-delivery.

## Sweet Adelines invite prospective members

The Commencement Bay Chapter of Sweet Adelines is holding open house for prospective members during the month of September. All women who love to sing and are interested in joining are invited to attend. Sweet Adelines, Inc. is composed of women of all ages and from all walks of life who share a common interest and desire to sing and promote harmony. Ladies in the Peninsula area can call Betty Suttle, 884-3936, for more information.

## Performance Circle opens season with Eugene O'Neil play

October 16 is Eugene O'Neil's 100th birthday. In celebration the Performance Circle of Gig Harbor will open "Long Day's Journey Into Night" on September 29 and play Thursday, Friday and Saturday at 8 pm through October 15. A Sunday matinee on October 16 at 2 pm will be followed by an O'Neil tribute.

Don't miss the opportunity to take part in a tribute to this great American author. Call for ticket reservations at 851-PLAY.

**BELFAIR NEW and USED FURNITURE**  
Next door to Flea Market

**Special Offering on Living Room Furniture**

We have just bought out the last six sets of furniture from a manufacturer before he went out of business. They are five piece living room sets consisting of sofa, matching chair, coffee table and two end tables. The fabric is very tough and durable and the frames are constructed of heavy solid wood.

The total price of \$349.00 per five piece set is considerably below the price the dealer used to pay for them while they were still in production.

We accept Master Card, Visa and personal check

Also have a lay-a-way plan for your convenience.

**Location:** In the heart of Belfair, next door to Thriftway.

**Shopping Days & Hours**  
Thurs. & Fri. Noon to 7pm  
Saturday 9am to 5pm  
Sunday 10am to 5pm

**275-2850 898-2818**

**Key Stitch Upholstery**

YOUR KEY TO FINE UPHOLSTERY  
RESIDENTIAL - COMMERCIAL

- FURNITURE - REPAIR
- AUTO - TRUCK - BOATS - RV
- SEATS & CUSHIONS
- FABRICS & SUPPLIES

FOR THE DO-IT-YOURSELFER  
FREE IN HOME ESTIMATES  
FREE PICK-UP & DELIVERY

**884-9288**  
1 MI. NO OF KEY CENTER  
14910 101 CT. KPN

**KEY ACCOUNTING**

Auditing  
Tax Services  
Bookkeeping  
Financial Statements

Fran Kent, Accountant

6706 Key Peninsula Hwy. S.  
Longbranch, WA 98351  
(206) 884-3862

**Call for a quote on your auto or homeowners insurance.**

Compare Allstate for value.  
Absolutely no obligation.  
Call now for an estimate.

**Allstate®**  
Allstate Insurance Company  
Northbrook, IL

Jeff Walters  
Springhill, Hwy.16  
851-5137

Leave it to The Good Hands People.

**KEY CENTER NATIONAL AUTO PARTS**

COMPLETE LINE OF FOREIGN & DOMESTIC PARTS

**DISCOUNT PRICES**

HOURS OPEN:  
8:30 - 7:00 Mon - Fri  
8:30 - 6:00 Sat  
10:00 - 4:00 Sun

KENDALL LUBRICANTS  
**WAGNER BRAKE PRODUCTS**

Machine Shop Service **884-3307**

Pauline Finn Shelly Plumer Mady Plumer David Sutter Bob & Barb Gilliam Sandy Hornbeck Stan and Eleanor Rippon  
 Nancy Pratt Tim Kezele Kris Sutter Felecia Lang Virginia Thompson Suzan Kezele Dave and Patsy Blondell  
 Brad Lang Carolyn Carr

# Please Join us! Vote YES!

Patty Danca Harold McKinney Martha Applegate Ruth Madsen Al Taylor Addie McMenamin  
 Bruce Kelley Lynn Radcliffe David Dowsley Bob L. Johnson Dick Radonich Bea Pruski  
 Thelma Cadle Robert Van Valkenberg Virginia Adkisson  
 Randy Carr Mady Plumer Zoe Sanders  
 Cindy Knisely **for our** **PARKS!** Georgia Gillis  
**Key Peninsula** Dolores Ramsdell  
 Norma Smith  
 Jackie and Don Jopp

Pearl Johnson Betty Mathewson Opal Vitol Cathryn Schafer Helen Kasper  
 Sarah McDonald Oscar Johnson Mark Knisely Dee Adams Beverly Pederson  
 Mick Sanders Mary Ellen Byrd Kathy Krasko Kevin Deickman Fred Ramsdell  
 Kay Pintner Max Marlow Ron Simon Jo Churchward Chris Gay  
 Mike Misner Veta Manley Donna Folden Rod Mitchell Jeff Charboneau  
 Wayne De Ment Gregg Moore Darryl Kelleher John Robinson Katherine Aduddell  
 Ron Brown Bobbi Buckell Anna Carlson John Robinson Ross Bischoff  
 Peggy Colwell Mel Manley Don Nelson Gail Jones Donna Oliver  
 Betty Gehring Isabell Mattison Deborah Roos Gail Mitchell Lawrence Jopp  
 Dave Elliot Brad Lange Steve Nicholas Larry Weaver Dee Rose

Cathy S. Beal  
 Jim Sammons  
 Becky Freeman  
 Robert G. Fields  
 Lane Spunaugle  
 Kendra Nelson  
 Tom Edwards  
 Debbie Simon  
 Mickie Kelleher  
 Rick Selfors  
 Barbara Trotter  
 Red Dogs  
 Patricia J. Misenaar  
 Robert Phair  
 Virginia Thompson  
 K. A. Sayers  
 Ann Larson  
 Steve Folden  
 Shirley Olson  
 Robert "Bob" Smith  
 Yvonne Wensky  
 Tony Brentin  
 Glenda Rose Lemon  
 Don Mastro

**This request that you vote YES to support our park and Civic Center on Tuesday, September 20, 1988, is paid for by your neighbors and friends. Please help to keep Volunteer Park and KPCC open!**

Grace Armstrong A. J. Kasper Billy Shawver LeRoy Challenger  
 George Parrott Jean Park Ole Warmbo Sandy Robinson  
 Kathy Schmidt Richard L. Noble Duane Fleming Horace Kanno  
 Jim Loukides Debbie Simon Lee Stiles Avon Gay  
 Marcia Edwards Erin McDonald Scott Moore John Schmidt  
 Joseph Aprile Lee Spunaugle Aggie Shawver Danna Kanouse  
 Patty Van Valkenberg Joe House Phil Radcliffe Mary Ramsdell  
 Marvin F. Anderson Clara Kurz Helen Moore Rhys C. Wood  
 Annabelle V. Evans Bea Emil KPAA Vicki Henschell  
 Le Roy Challenger  
 Katherine Aduddell  
 Gordon L. De Pierre  
 Peggy Smith Sorenson  
 James H. Woodridge  
 Karen Lee Larsen

Sharon A. Phane Sandy Newhouse Yvonne Wensky  
 Mike P. Shiner Hugh McMillan Thomas Z. Fifer  
 Cheryl Giuntoli Jane Hoffecker Cherie J. Mastro  
 Peter Kauppila Perry Benoit Del' Newhouse  
 Becca Gay Larry Whitney Henry G. Stock  
 Orrie Moore John Pearson Lisa Mowatt  
 Elizabeth L. Boyd William Roes  
 Chuck West Janice McMillan  
 Ron Simon Frances Challenger  
 Mike Paul Kim Hansen  
 Karen Snelson Clement Kurz  
 Mike Krasko Georgia Penfield  
 Daphne Daus Don Hornbeck  
 Tim Lemon Marge Radonich  
 Billie McKinney Kenneth Retherford  
 Jim Glass Jean L. Johnson  
 Wayne Gay Andy Rebsamen  
 Gerry Elston Joyce Tovey  
 Julie Johnson Tom Lique  
 James & Sue Beck Wendy Birmie Buri  
 Pam Ross Clint Buckell  
 Dale Loy Annette Marlow  
 Megan Aprile Alex Roos  
 Robert R. Beal Terry Moore  
 Susie Jopp James H. Wooldridge  
 Lyman Champlain Patrick Moore  
 Michele Graham Tanna Glass  
 Mark Smith Don Rose  
 Loretta Jewett Penny Manley

**Assessment on \$50,000 home for this two year levy: \$5<sup>25</sup> per year, payable in the first year.**

The levy will provide the KP Park District annually \$40,000 (a total levy of \$80,000 to cover two years). Added to the estimated \$17,500 from rentals of the KPCC and Volunteer Park, plus an estimated \$500 income from the concession stand, it will provide a total annual operating budget of \$58,000. (Based on actual expenses for the first quarter of 1988 (payroll/KPCC: \$12,000; payroll/Volunteer Park: \$6,000; payroll taxes: \$2,000; Accounting service: \$500; Insurance: \$12,000; lights, heat, refuse, maintenance supplies: \$17,000; Election costs: \$3,500; replacement of commercial mower: \$5,000. Total annual expenditures: \$58,000.)

**A YES vote will help to continue all this: Dances, Tennis, Firefighters Ball, Political forums, Bingo, Pioneer Days, Senior Citizens meetings, Picnics, Slo-Pitch, Twilight Dance Club, Citizens Against Crime, Skating, Boy & Cub Scouts, Karate, Aerobics, PAA basketball, baseball, VFW, soccer, Horseshoes, Reno Nights, Easter Egg Hunts, KP Lions Citizens of the Year, pancake breakfasts, spaghetti feeds, Christmas bazaar, Cootiettes, and more, and More, and MORE, and.....**

Missy Gay Don Warmbo  
 Anne Marie Kanno Ann White  
 Debra L. Hansen William Park  
 Bill Detmering Claudia Loy  
 Ruby Mullen Tim Lemon  
 Peg Johnson

Cindy Moore Eleanor Stock  
 Winifred Smith David Rovang  
 Tammy Brentin Sally Cornman  
 Edwin Voss Jim Updike  
 Mike Kent  
 John McMenamin  
 Sylvia Retherford  
 Walt Smith  
 Janet Gormly  
 Roy Madsen  
 Joyce Bischoff  
 Keith Stiles  
 Margot Fleming  
 Mel Oliver  
 Phyllis Jardin  
 Bud Churchward  
 Annette Marlow  
 Bob Jones  
 Fran Kent  
 Jim Adams  
 Barbara De Ment

This is an "excess levy" and many senior citizens are exempted from assessment. For senior and disabled advice, Call 591-7105.

# The many ways the Civic Center and Volunteer Park enrich Key Peninsula life ... a picture story



Senior citizens read play with mime.



Halloween with the seniors.



Cootiettes hold their weekly meetings at the Civic Center.

Easter Egg Hunt on Civic Center grounds.



A festive night with Grange 705



Joyce and Mike Salatino's Christmas dinner for residents who would otherwise be alone.



Mary Ann Huntington moderates 1988 Candidates' Fair.



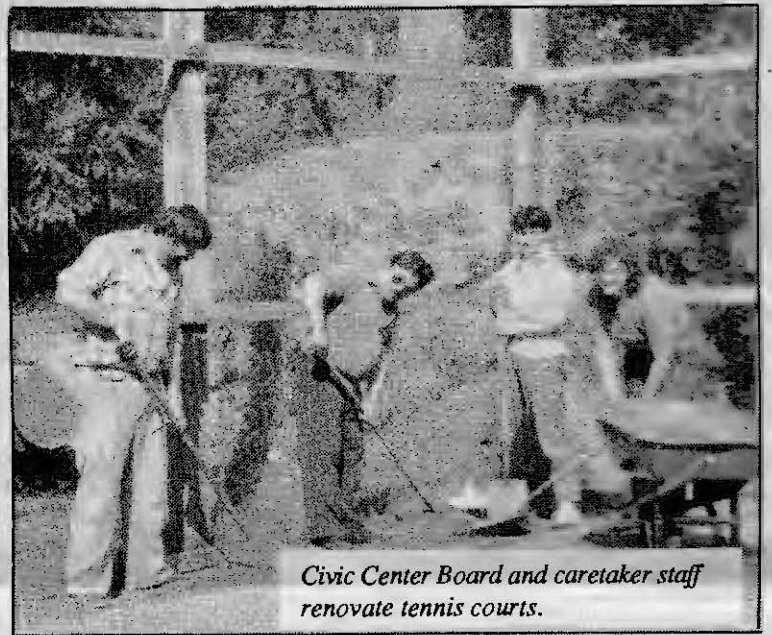
*Annual Arts and Crafts Fair.*



*Fire District 16 awards night.*



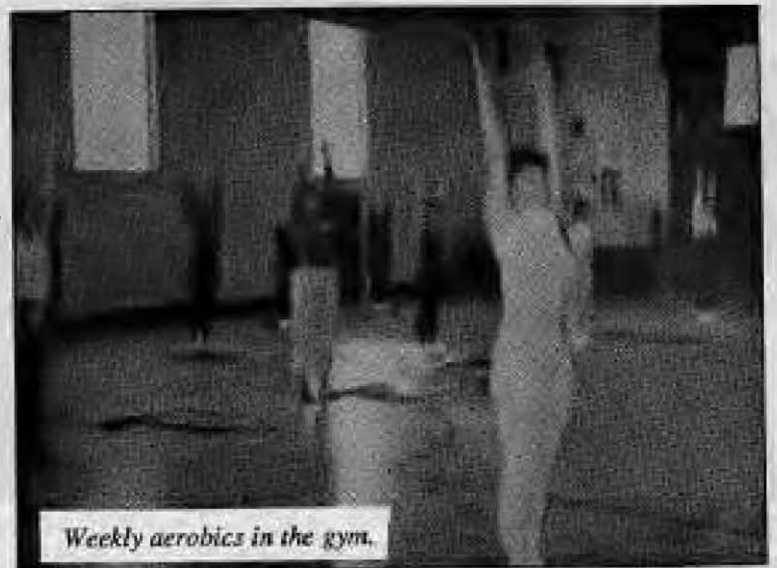
*Square dancing at the Civic Center.*



*Civic Center Board and caretaker staff renovate tennis courts.*



*VFW muster on the lawn.*



*Weekly aerobics in the gym.*



*Karate night in the gym.*

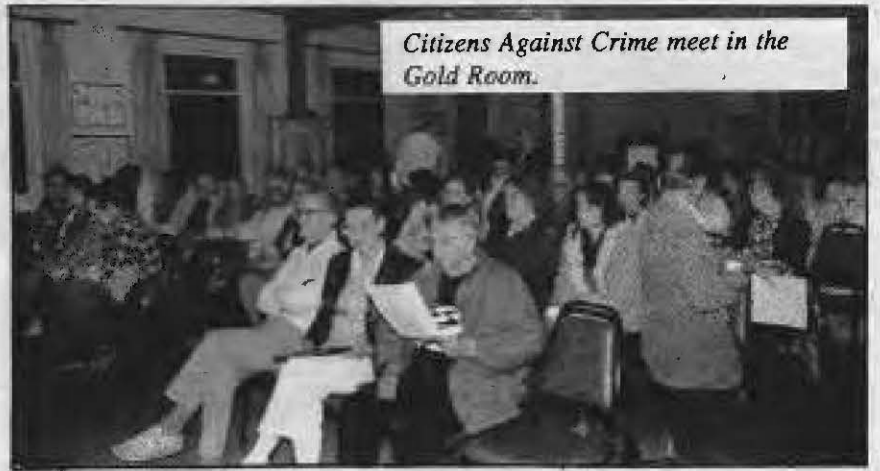


*Area Agency on Aging meets in the Gold Room.*

*More pictures on pages 8 and 9*



All-Kids Halloween party.



Citizens Against Crime meet in the Gold Room.



Volunteer Park ready for summer activities.



Pack 203 presents the flag.



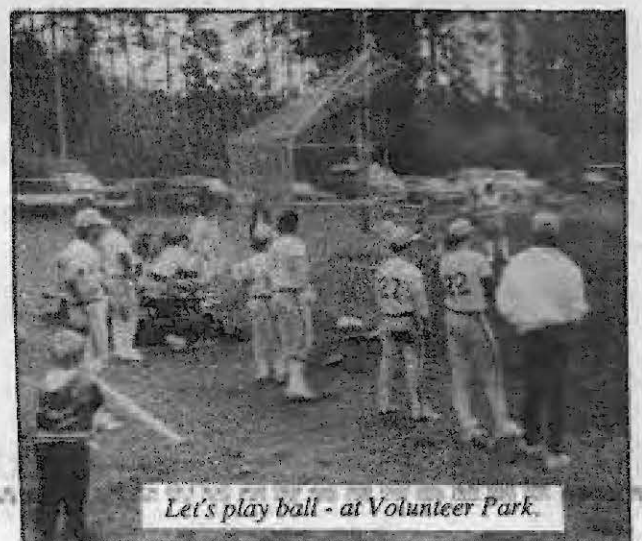
Volunteer Park Summer Fun Kids take part in Pioneer Days parade.



Lions spaghetti feed.



Opening ceremonies at Volunteer Park.



Let's play ball - at Volunteer Park.



Aspiring young ballet dancers perform for the Senior Society at one of their weekly potlucks in the Gold Room.



Jim and Maureen Taylor play Mr. and Mrs. Santa Claus for local youngsters around the Arts and Crafts Fair Christmas tree at the Civic Center.



**Death of a whale - 1890 part 2**  
(part 1 published 8/15)

News that a whale was in Henderson Bay travelled fast. Soon people were arriving by the boat-load to view and, sadly, to harass the unfortunate animal. Unlike today when a majority of people have a feeling of kinship with the wild creatures, the one and only thought was to kill the whale. How to do so was not important.

Naturally rifles were the main weapons used against the poor, miserable, befuddled creature. From 22s to 45-70s; and there were still a few smooth bore muskets around, probably filled with any kind of nails or junk that was handy. Odd

pieces of lead would be used to make deer loads, and the whale most likely got his thick hide peppered good.

The "Battle of the whale" continued for several days, with various schemes being invented to try to do in the "deadly and vicious beast." Mom does not say what finally killed the whale. She does say that it was killed when asleep. It would be reasonable to assume that someone got a charge of dynamite to explode on or very near the sleeping or exhausted beast.

Regardless of how the whale died, it naturally had to be towed somewhere so the public could view it and someone could make a few dollars off it. Tacoma's waterfront was naturally the chosen place. (Tacoma has always been lucky that way.) The public seemed to lose interest as the whale 'ripened' in the sun and wind.

Again Mom does not mention just what was done with the corpse. Probably it was pulled out into the bay to drift with the tide to someone else's beach. That was the usual custom.

**LONGBRANCH ANNUAL SALMON DERBY**

**October 1 & 2**

1st Prize for largest Salmon.....\$250

2nd Prize.....\$100

3rd Prize.....\$ 50

Scrap Fish-Prize.....\$50 savings bond  
or any other merchandise prize from PSNB

Over 35 Merchandise Prizes  
\$5.00 for Two Days of Fishing  
Area 11 & 13 (south of Narrows)

**Ticket Outlets:**

**884-4588**

Red Dogs  
K.C. Auto Parts  
Northwest Outdoors  
DJ's Tire  
Pleasure Craft  
Allan Hardware

Winger Plumbing  
Key Western Bldg. Center  
The Garden Shoppe  
The Country Mouse  
Santee's Boat Works  
K.C. Barber Shop

Homeport Restaurant  
Big Wheel Auto Parts  
Station Break Tavern  
Leeward Mark  
Spencer Power  
Longbranch Mercantile

**Car, Truck, Trailer Service**

- Foreign & Domestic Cars Repaired
- Brake Drums and Rotors Turned
- Box Trailer Rebuilding
- Engine Overhauls
- Tractors & Heavy Equipment Service
- Large Truck Engine Service
- All Work Guaranteed
- 23 Years of Experience

**M & M AUTO REPAIR**

**NEW LOCATION**  
15125 State Road 302  
1/2 mile north of Key Center

Hours: 6am-6pm, Mon.-Sat.

Allan Mowatt

**884-2788**

**PENINSULA GUTTER**

Seamless Custom Installation

Baked-On Enamel Finish  
(8 colors available)

**FREE ESTIMATES**

**857-5790**

Locally Owned

**LAKEBAY ROOFING**

Pierce, Kitsap, King & Mason Counties

RESIDENTIAL • RE-ROOFING  
NEW CONSTRUCTION

SHAKE - HOT MOP - TILE  
COMPOSITION - CEDAR SHINGLES

*Free Estimates*

**884-2186**

TOM ROLFZEN - Owner  
WN ST. CONSTR. LAKE BR#1576F

5110 LACKEY RD. KPN

VAUGHN

884-2144

FROM YOUR CHIROPRACTOR

Dr. Robert B. Campbell D.C.  
CHIROPRACTIC SPINAL CARE

X-RAY FACILITIES ON LOCATION  
WE STILL MAKE HOUSECALLS

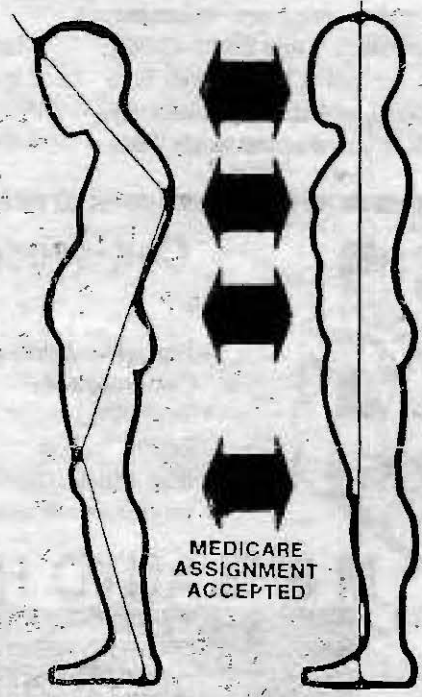
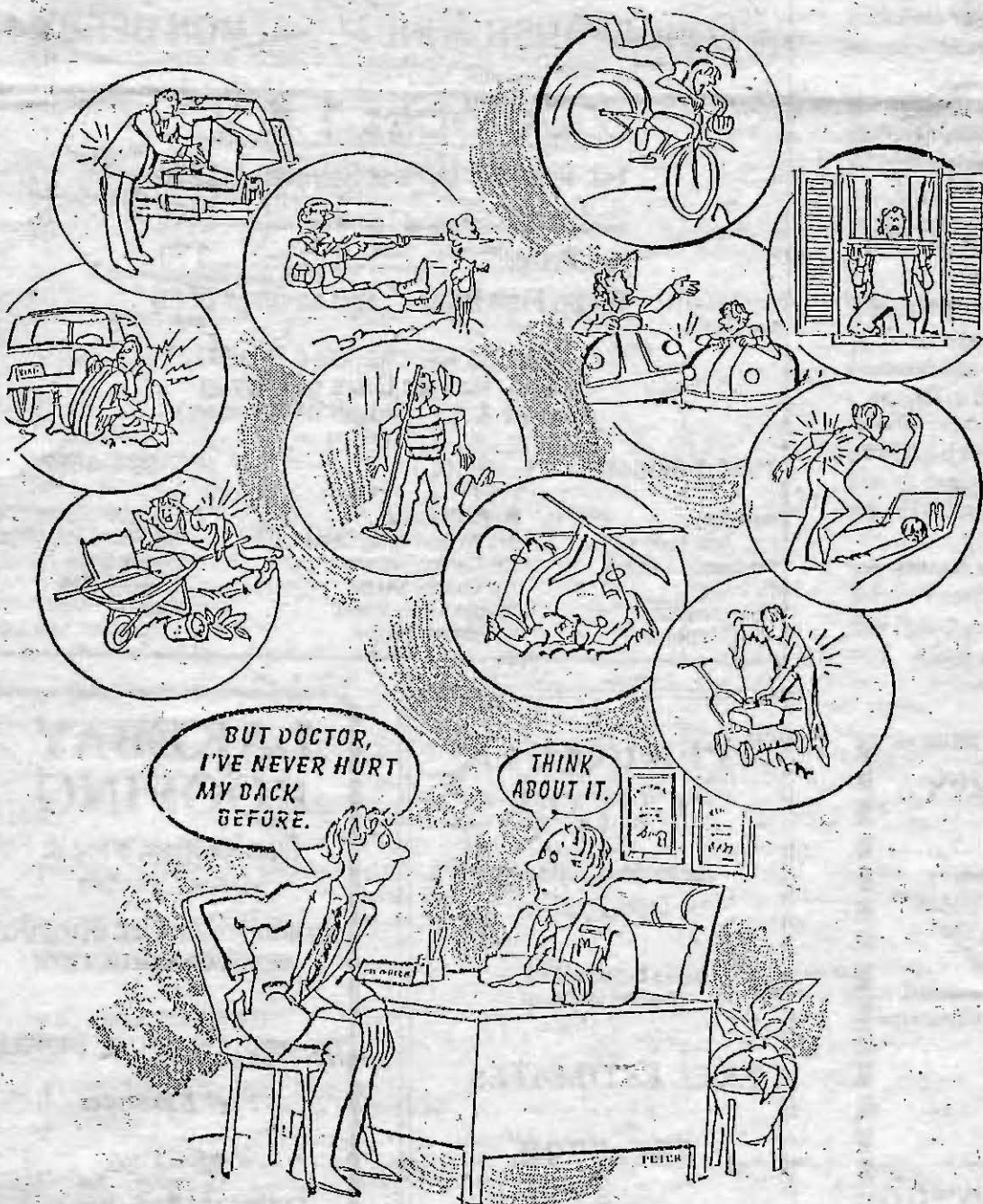
**NO INSURANCE? NO PROBLEM!**

We are pleased to inform you that we now have a financial plan in place for patients that have no insurance coverage of any kind for Chiropractic care and also for patients who have exhausted their insurance coverage for the year. The plan works this way:

One Family Member	\$55.00 per month
Two Family Members	\$65.00 per month
Whole Family	\$75.00 per month

The plan covers adjustments only. Any x-rays, exams or supports during the month would be an additional charge. Also, as you get better and your adjustments decrease during the month you would pay your monthly rate or \$20.00 per visit, whichever is less.

Please call if you have more questions. Also check the Newsletter to save on exam and x-rays!



5110 LACKEY RD. KPN

VAUGHN

884-2144

FROM YOUR CHIROPRACTOR

**Dr. Robert B Campbell D.C.  
CHIROPRACTIC SPINAL CARE**

X-RAY FACILITIES ON LOCATION  
WE STILL MAKE HOUSECALLS



**FREE**  
HEALTH PASS  
ARE YOU IN  
**PAIN?**  
SUFFER FROM INJURY?

"If you think Doctor Campbell  
can't help your problem  
young or old  
**THINK AGAIN"**

**THINK SAFE**

1. Chiropractic First
2. Addicting Drugs and Narcotics Second
3. Potentially Dangerous Surgery Last



When grown-ups aren't the only ones with back problems, call for HELP.

**Complimentary Consultation**

Learning to walk, playing, sports and the birth process itself can be a stress on an child's spine. If your child experiences any of the following symptoms call and let us gently examine your child. We may be able to help.

- frequent ear aches
- colic
- allergies
- stomach aches
- bedwetting
- frequent fevers
- frequent vomiting
- malabsorption
- lack of weight gain
- spinal curvature

Insurance Accepted & We Can See You Today

**HEALTH PASS**  
FREE 2 x-rays if medically necessary (\$60 value)  
FREE additional exam or treatment (\$90 value)  
**TOTAL VALUE OF \$150**  
*(If not covered by insurance. Initial visit only)*

Millions of people have health problems that may be helped through chiropractic care, yet often hesitate to try chiropractic because of the cost. Therefore, we are providing this **CHIROPRACTIC PASS**. It may be used at this office to reduce or defray the cost of your chiropractic care including, if indicated: consultation, x-rays, orthopedic exam, neurological exam, diagnosis and treatment up to the values shown above.

Restrictions: (1) This **CHIROPRACTIC PASS** is for the purpose of allowing people to find out if chiropractic may be indicated for their back problems and is applied to services rendered, up to the value of the **PASS**; (2) Only one **CHIROPRACTIC PASS** per person, not transferable, and not to be used in conjunction with any other offer of discounted or free services; (3) This **CHIROPRACTIC PASS** cannot be used to satisfy deductibles or copayments required by the patient's insurance or health care plan.

**MEDICAL DOCTORS and CELEBRITIES**

Comment on and endorse Chiropractic!!!

**ASTONISHING SUCCESS QUICKLY,  
PAINLESSLY**

"Chiropractic is thoroughly suited to be accorded an authorized place in our therapy chest. Experienced and critical observers of chiropractic see in it a substantial enrichment of our present methods of treatment and treasure it because sometimes, under a practiced chiropractor, it gives astonishing success quickly and painlessly." (Dr. A.A. Hockfield, in Zeitschrift fur)

**Melvin Belli**

"I had headaches for over 30 years until I tried chiropractic. They have completely disappeared."

**AND LET'S JUST**

**ASK YOUR NEIGHBOR!**

**OPEN  
7 DAYS  
A WEEK**

**WE'RE  
HERE  
WHEN  
YOU  
NEED  
US**

"The main reason I came to see Doctor Campbell was for headaches. I've had them steady now since 1955!! And have been taking a variety of different pain killing drugs for temporary relief. I've seen Doctor Campbell for less than a month and I've been able to steadily decrease my dependency on drugs for relief!!

**John Klinker  
Age 84  
Lakebay, WA**

"If you think chiropractic wont help your problem think again. Call today and find out you have other to lose except your pain."



# Oldtimers' Day 1988 at Community House in Home

KP NEWS photos by Lee Stiles



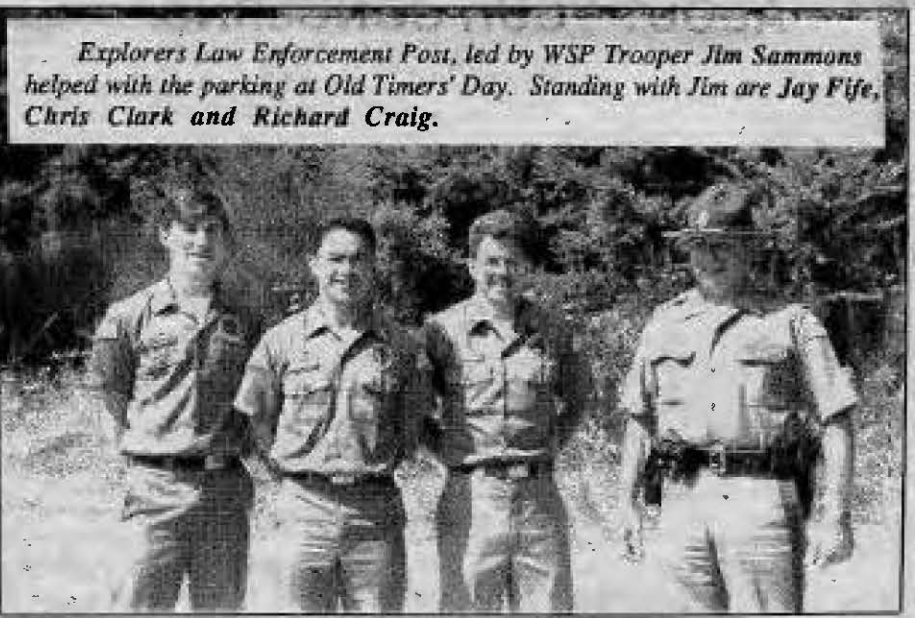
Timberrrrr!



Rhys Wood tries to beat the clock in the log sawing competition.



Marge Anderson, manager of Key Peninsula Community Services, and Cecil Paul enjoy the sunshine at Old Timers' Day.



Explorers Law Enforcement Post, led by WSP Trooper Jim Sammons helped with the parking at Old Timers' Day. Standing with Jim are Jay Fife, Chris Clark and Richard Craig.

## Diabetic Support Group

You really didn't think you were that sick. So you were a little thirsty and you had lost or gained a little weight. Maybe your vision was a little blurry, but after all, everyone has a few problems once in awhile. But the doctor said "You have diabetes," gave you instructions, some reading material and maybe even showed you how to inject yourself with insulin. And now you're on your own. You have so many things to learn, to read and to change. You can't call the doctor every day, can you? What about the "little" things that come up that used to be routine, but now...are they important enough to call the doctor's office again?

Diabetes is a treatable disease. If you work closely with your doctor and your dietician, get enough exercise and rest and learn to reduce the stress in your life or at least modify your response to stress, you can live a healthy, active life. Your health care provider is your best source of information if you have diabetes and

regular communication with that provider is very important, but you may need to talk with other diabetics to hear what they are doing to control their disease.

A Diabetic Support Group meets at the Key Peninsula Health Clinic on the third Thursday of every month at 7 pm. The group consists of diabetics (of all stages) and their families. We share problems, successes and ideas. Sometimes we have speakers, films or demonstrations and sometimes we just talk. It's not always easy for folks to accept or understand their disease, especially one as complicated as diabetes, and that's when the Support Group can really help. We are supported and assisted by the American Diabetes Association.

If you have diabetes, whether you are controlled by diet, medication or insulin, we would like you to join us. If you have a family member who is diabetic, you are welcome too. You are an important part of the life of your diabetic and you need support as well.

For further information, please call Helen Jamieson at 884-3691 or the Key Peninsula Health Clinic at 884-9221.

## From our scrapbooks

by Margaret Paul

### From the Peninsula Gateway, December 1944:

Mrs. Milton Rickert was the honored guest at a shower given Saturday by Mrs. Urias F. Martin and Mrs. Edmund Rickert. Mrs. Ernest Rickert and Mrs. Edith Hedman poured. Those present were the Mesdames Charles Bazner, Victor Colgate, August S. Pierre, Earl Gross, Helen Rickert, Tony Van Lanen, Adolph Rickert, Carl Ross, Richard Hall, Nicholas Boquist, John Schultz, William Rickert, Arthur Summerfelt, Lyle Yust, Ray Hedman, Everett Davidson, George Johnson, George Rickert, Clarence Nelson, George Otto, Elizabeth Bayliss, Clifford

Stovener, Ralph Rickert, Frank Wellington, Garland Grubb, Marvin Rickert and the Misses Shirley Rickert, Marge Rickert, Marlene, Gayle and Dale St. Pierre and Carol Ann Colgate.

### October 6, 1944:

Pfc. Everett Stinson from Texas is visiting his parents at Vaughn, Mr. and Mrs. Arne Dahl. Pfc. Edmund Olson is home on a week's furlough from Oregon Medical School at Portland.

The amazing price of 13-1/2 cents a pound is being paid for huckleberries this October 1st. The prices have almost always been down before then.

# WHEN YOU CALL OLYMPIA

## WES PRUITT CALLS YOU BACK

**LEADERSHIP IS CARING  
ABOUT YOUR CONCERNS.**



I called WES with an idea that would help the mentally ill find employment. The next thing I knew, it was law.  
Vernon Young, Gig Harbor

I was desperately in need of assistance. WES was the only Legislator out of the 50 I contacted who called me back. Legislation he passed as a result of my situation has already helped over 100 people.  
Rick Selfors, Key Peninsula

The day I received the Christa McAuliff Washington Excellence in Education Award was one of the happiest and most important days of my life. WES came to Olympia to share that moment with me.  
Laura Schuck, Port Orchard

### NOW THAT'S COMMITMENT.

## RE-ELECT WES PRUITT A PROVEN LEADER

STATE REPRESENTATIVE • DISTRICT 26 • DEMOCRAT

Paid for by Washington State Democratic Central Committee, Karen Marchioro, Chair

## Shellfish sites booklet available

Clam diggers and crab fishers take note: a free booklet is now available which shows the location of public beaches in Puget Sound and where you can find crab, shrimp, clams and oysters. The booklet, "Puget Sound Public Shellfish Sites," is now available at no charge at numerous state agencies.

This is an updated version of a previous publication, according to Department of Fisheries officials. "The booklet was so popular when we last printed it in 1983 that we could not keep up with the demand," Fisheries Shellfish Program Coordinator Eric Hurlburt said.

Reprinting the booklet was a cooperative effort involving the state departments of Fisheries, Ecology, Natural Resources and Social and Health Services as well as the Washington Parks and Recreation Commission. Pooling both people and financial resources, representatives from these agencies were able to get the publication back into circulation with distribution points at numerous state offices and park sites.

The booklet contains 28 color-coded maps which show the location of public beaches in Puget Sound east of Dungeness Spit and where crab, shrimp, oysters and clams can be found. The maps also indicate which beaches are accessible only by boat and the location of access points and boat launches. The text includes drawings and descriptions of the

more common types of shellfish found on our shores. It also lists sources of information for people who want to learn more about the biology of shellfish, like the location of marine science education centers.

Seasoned Puget Sound fishers also know that safety is an important concern when harvesting clams, oysters and other bivalve shellfish. More and more beaches are being closed, including such popular state parks as Dosewallips and Belfair, as the water pollution problem grows. Another health risk is paralytic shellfish poisoning (Red Tide) which continues to be a real danger in many areas. To assist the shellfish harvester, "Puget Sound Public Shellfish Sites" lists the phone numbers to call and the procedures to

follow to assure safety. Fishers should call the local health department about pollution closures and should always call the Department of Social and Health Services' Red Tide Hotline (1-800-562-5632) before digging clams or taking oysters in any area.

"Puget Sound Public Shellfish Sites" may be picked up from the Department of Fisheries' Public Affairs Division (753-6552), Shellfish Laboratory, Brinnon, Washington (586-1499), their Coastal Office, Montesano, Washington (586-6129) or at any Washington State park located near saltwater.

## Minter School-age Child Care A Quality Program



Open 6:30am to 6:30pm including  
Early Dismissal and Vacation days.

Located at Minter Creek Elementary School  
Serving Kindergarten to Fifth Grade

Part-time and Full-time with Sliding Scale Fees.

A DSHS Contractor &  
United Way Agency  
Washington Childrens  
Learning Centers

851-7734

Affiliated with  
Harbor Heights  
School Age Child  
Care

## KEY PENINSULA LUTHERAN CHURCH

NE Corner of Lackey Road  
and the Key Peninsula Hwy.

### Sundays:

Worship 8:00am  
Education 9:15am  
Worship 10:30am

### Thursdays:

Soup Supper 6:00pm  
Search 6:30pm  
Worship 7:30pm



Come share  
the Spirit!  
or  
call:  
884-3312

Rev. Robert Sachs, Pastor

## EDU-CARE

LICENSED PRESCHOOL  
AND DAY CARE

Now enrolling  
18 mo. - 11 yrs.

1. Daily Preschool Programs
2. Nutritional Hot Lunches & Snacks
3. Beautiful Park-like Setting
4. Qualified Staff
5. Reasonable Rates

Purdy/Minter Area  
857-6545

15517 Goodrich Dr. NW  
Gig Harbor, WA

6:30am  
to 6:00pm

## Sunnycrest Is Ready For All Your Fall Decorations

We have everything to make your home look  
special - or we can do it for you!

The New Paper Ribbon and Colored Raffa  
Beautiful Baskets  
Fragrant Potpourris and Simmering Scents  
Dried Everlasting Flowers  
Silks • Ribbons • Twig Wreaths

FRESH FLOWERS AND GIFTS  
FOR ALL OCCASIONS

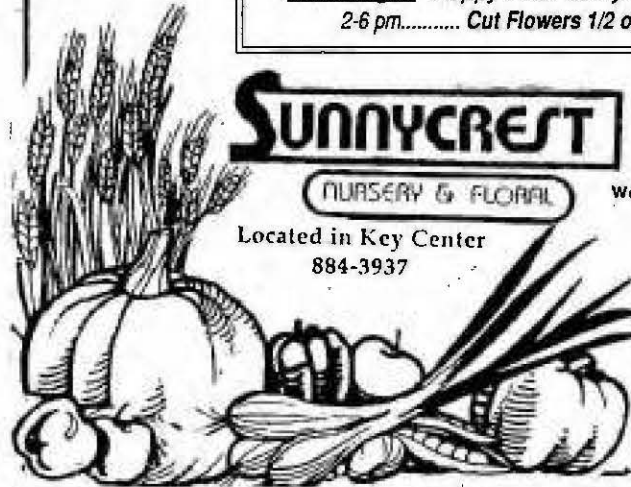
Weddings • Birthdays • Receptions  
Hospitals • Sympathy • Anniversaries  
Don't forget - Happy Hour every Friday  
2-6 pm..... Cut Flowers 1/2 off

## SUNNYCREST

NURSERY & FLORAL

Located in Key Center  
884-3937

We deliver on the Key Peninsula  
and to Haven of Rest



OPEN  
EVERYDAY  
9am - 6pm  
Sunday  
11am - 4pm



## RE-ELECT Your State Representative

# RON MEYERS

## 26th District Democrat

Paid for by

Committee to Re-Elect Ron Meyers, Donna Meyers, Treasurer

884-4602

# RED DOG'S

884-4602

GROCERY, BAKERY & VIDEO

IN

UPTOWN KEY CENTER

OPEN 5AM-MIDNIGHT 365 DAYS A YEAR

"We would like to personally thank a few of the local businesses who regularly shop in our store. We appreciate your business and we promise we will continue to be friendly, courteous and caring."

Lesi & Bill Holland  
Owners



LAKEBAY LUMBER  
 KEY PENINSULA INSURANCE  
 GREAT AMERICAN PIZZA  
 ICE CREAM SHOPPE  
 COLONY REALTY  
 TACOMA TELCO  
 PUGET SOUND NATIONAL BANK  
 COUNTRY HOME DAY CARE  
 LAKEBAY ROOFING  
 ANGEL GUILD  
 PETE'S TOWING  
 LONNING'S ROAD REPAIR  
 KEY PENINSULA ISSHINRYU  
 MIKE'S PLUMBING  
 KEY CENTER CHIROPRACTIC  
 MYR-MAR ACCOUNTING

KEY WESTERN BUILDING CENTER  
 K & J FEED  
 SYLVIA'S TANNING SALON  
 TAYLOR'S REFRIGERATIO  
 WM. FLINTOFF, CONTRACTOR  
 THOMPSON DOZING  
 T-LAYS CUSTOM CABINETS  
 DOCTOR ROES & STAFF  
 SHERILEE LUEDTKE, ATTORNEY  
 STANFILL WELL DRILLING  
 KEY CENTER GARAGE  
 NARROW'S LANDSCAPING  
 CHET'S LAKEBAY CHEVRON  
 KEY CENTER SHELL  
 BROOKSIDE RESTAURANT

Soon To Have  
**1000 MOVIES**  
 No Membership-No Hassle-No Distrust

**COKE 2L  
99¢**

**CIGARETTES  
\$1.48 + tax**

**RAINIER  
1/2cs Btls.  
\$3.99**

Everyday Bakery Special  
**DONUT & COFFEE 59¢**  
 Fresh Bread Baked Daily

**SEAGRAMS 4pak  
\$3.29**

**CLASSIFIEDS**  
**884-4699**

We're back! Personalized TAX PREPARATION ACCOUNTING SERVICES. Many years experience. Cal Marv Keizur 884-3555 - MYR-MAR Accounting Service and Notary Public. VISA/MC welcome.

Angel Guild Thriftshop located in KC Corral at Key Center. Donations from KP residents for benefit of KP residents. Lowest prices. Be a benefactor!

Aerobic Classes Key Peninsula Civic Center. Monday/Wednesday/Friday 9-10am, babysitting available nominal fee. Tuesday 6-7 pm, 884-3642.

Ventures Unlimited quality cleaning services. Residential or commercial. Reasonable rates. Call Kathy 884-9199.

China Painting class starting at Burley Galleria. 9-noon each Tuesday. 18420 Bethel-Burley Rd. SE, 857-7479.

Bushnell's Landscape Installation: Quality rock walls, professionally installed sod and seed lawns, top soil. 884-2585.

Green Meadow Ranch - Horseshoeing. Training. Boarding. Riding lessons, English, Western. Also guided trail rides. 884-4630.

Porcelain Doll seminar starting Saturday, September 17 from 9 to noon at Burley Galleria, 14820 Bethel-Burley Rd. SE. 857-7479.

Semi-retired Carpenter. Basement to roof repairs. License LAOR-PI-140K7. Call Bill 851-8157.

Automotive tune-ups \$25 plus parts. Major/minor repairs. On-site repairs available. 23 years experience. 858-7641

Caregiver available daytime, experienced Certified Nurses Aide. For more information call Karen 884-2733.

Be creative! Come have fun fabric painting on sweats, shirts etc. We have glitter, shiny, puff, starlite and regular fabric paints, including new pastels and latest books. Homestead Crafts 857-3307.

Now interviewing artists, craftspersons, designers for Christmas at Burley Galleria. Call for appointment 11-4 pm. 857-7479.

NERVOUS & TIRED? A chiropractic adjustment can restore proper nerve function allowing normal rest and relaxation. Call Key Center Chiropractic, 884-3040.

Low back pain and discomfort? The Flexion traction table utilized at Key Center Chiropractic can bring relief and correction. Call 884-3040 for that appointment!

KEY CENTER CHIROPRACTIC accepts most insurances including PCMB, Blue Cross, GEHA, CSB Medicare, Carpenters Trust, DSHS and many others. Call today for your appointment. 884-3040.

**WANTED**

SEWING WANTED: Alterations-mending - zippers replaced - new garments. Get ready for school. Call Myrtle 884-3566 VISA/MC welcome.

**FOR SALE**

BE FIRST! Order your Presidential Candidates buttons NOW! Bush and Dukakis. Excellent gift or souvenir. Send \$1 for each or 10 or more: 75¢ to Ricole, PO Box 323, Vaughn, WA 98394.

Watkins Products are available, call Marv and Myrtle Keizur at 884-3566. VISA/MC welcome.

AMWAY Products now being offered from Purdy to Longbranch. For a free catalog and dependable servicing, call Amway distributor Elaine Lefler at 851-4452.

**FOR RENT**

Bright, cheery, newly remodeled 2-bedroom house in Lakebay. Large kitchen, new carpet, large garage, storage and wood shop, fenced garden, all on wooded acre. We are looking for someone who will take good care of our house and make it their home. Non-smokers only. \$400/last/deposit/references/one year lease. Please call 884-2513.

**YARD SALE**

Yard Sale Saturday, September 24th, 9 to 4, NW corner of C and 3rd St. in Home. Plenty of everything for everybody.

*Knitting Basket*  
884-2004 2006 197 Ave. KPS Hours: 10-5  
Lakebay, Wa Mon.-Sat.



**50% OFF on Craft Yarns**  
**KNITTING MACHINES**

**NOW CARRYING NEW CONDO**  
Needles and Patterns



**NEED A CAR OR TRUCK?**

Little or no credit? Low on Cash? I have several vehicles that may meet your needs. You could drive today.

Call **KARL DAVIES** at Dick Boyles Chevrolet. Call 851-9931 Ask for **KARL**



**David Bainter Contractors**

Asphalt Paving - Roofing  
Sealing Coating  
Licensed, Bonded, Insured

884-3766 Serving the Peninsula Since 1978 876-2100  
17014 76 St. KPS Longbranch, WA 98351  
DAVID BC 124LC



# Obituaries

*It is with deep regret we report the deaths of our Peninsula friends and neighbors...*

**Frank Eilers (88)**, a resident of Longbranch from 1965 until 1982, died August 22. While a resident of Longbranch he built two homes, did lawn maintenance for 30 local residents and was a member of the Longbranch Church. He is survived by his daughter, Geraldine Eilers of Puyallup, two sons, Virgil Eilers of Fullerton, California and Everard Eilers of Big Sky, Montana, five grandchildren and seven great-grandchildren. Memorial services were held August 29 in Puyallup.

**Donald Lee Hein (52)** died on August 30 as the result of an industrial accident at his employment in the Tacoma area. He was born in Ritzville and had lived in the Peninsula area since 1962.

He is survived by his wife Karol, two daughters, a son, three sisters, including Joanne Leonard of Lakebay, a brother, a stepmother and four grandchildren.

Services were conducted at Haven of Rest.

Remembrances may be made to the Peninsula High School Scholarship Fund.

**George C. Burt (68)** died in Cleveland, Ohio on August 26. He was a resident of the Key Peninsula since 1980. He was a group counselor at Cascadia for the State of Washington for 15 years. He was a member of the State Employees Union, the Air Force Retirement Association and the 6th Avenue Baptist Church in Tacoma.

Mr. Burt is survived by his wife Mary, daughters Mary of Riyadh, Saudi Arabia and Janice of Spokane, sons Daniel of Spokane, Paul of Hilo, Hawaii, Mark and Dean of Gig Harbor and 12 grandchildren.

Services were held at the 6th Avenue Baptist Church, Tacoma. Arrangement were made by Haven of Rest.

**Brad D. Barbee**, a Lake Minterwood resident for 15 years, died on September 6 in Antioch, California. He was a graduate of Peninsula High School.

He is survived by his mother Ann and sisters Lorri and JoAnna, all of Lake Minterwood, his father Bob of Napa, California, a stepmother and grandparents.

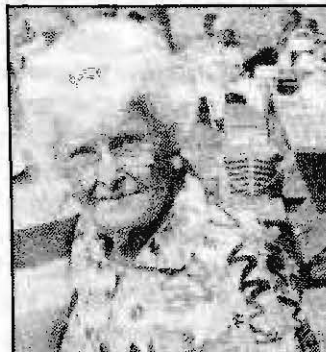
Services are at 1 pm Wednesday, September 14, at Haven of Rest.

**Joe H. Wolniewicz (84)** died September 7 at Cottesmore Nursing Home. He was a laborer at the Bremerton Naval Shipyard for 30 years and was very active in a variety of Peninsula community activities.

He is survived by his sister Margaret C. Mercer of Vaughn, 7 nephews and 7 nieces.

At his request, no services were held. Arrangements were made by Haven of Rest. Remembrances made to Key Center Fire District 16 Ambulance Fund.

**Virginia Tillman Roger (76)** died at her Jackson Lake home on September 2. She was born in Massachusetts and came to the Vaughn area with her parents, the Carl Larsons. She was an active member of the Key Peninsula Sportsmen's Club, the Historical Society and the Bayshore Garden Club. For many years she served on the election board in the Home precinct. Her picture collection included many photos of life in the earlier days on the Key Peninsula which she was kind enough to share with this newspaper.



She is survived by her brother John Larson of Home, a niece and a cousin.

Services are at 2 pm Friday, September 16, at the Lutheran Church in Home.

Remembrances may be made to the Fire District 16 Ambulance Fund.

## Blundell's Longbranch Chowder House

Does this sound like your HOME?

Flatware does not match.

Dishes do not match.

Table and Chairs do not match.

That is the very thing you will find in our restaurant because

it's also our home.

Doug and Joann

will make you at home and

match your appetite

with our 29 item

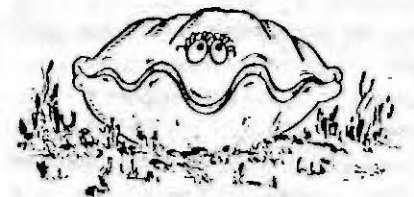
HOME COOKED MENU

Open Daily 11am - 8pm

884-4161

5212 Key Peninsula Highway

Longbranch, Wa 98351



on beautiful Filucy Bay

9's

### FAIR HARBOR MARINA

MONTHLY AND DAILY MOORAGE  
GAS - DIESEL - OIL

BAIT - TACKLE - ICE  
GROCERIES - BEER - HOT SANDWICHES

GEO-DUCKS - LIVE OR FROZEN

P.O. BOX A, GRAPEVIEW, WA  
E 5050 GRAPEVIEW LOOP RD.

PHONE 426-4028  
Res 275-6417

CASE INLET  
CAPT. KENNY 1st MATE PHYLLIS

*Fishing Good*

### LongBRANCH IMPROVEMENT CLUB

Presents

"For The Teenagers"

D.J. - Rich McCall

September 24, 8pm to midnight

Members and Guests 12 yrs. and over \$3.00

Under 12, Free

No alcohol please

Pop and refreshments available

"No-smoking" Area Available



**Bet You CAN DANCE**

to the live music of  
The **Fender Benders**

60's and 70's HYSTERIA  
Saturday, Sept. 24th  
Key Peninsula Civic Center  
9-1 a.m.

Residents of Fire District 16 and Guests

Tickets Available at  
Sunnycrest Nursery  
\$6.00 Advance • \$7.50 at the Door  
21 and Over  
Free Coffee and Ice

Bring a can of Food and support the Food Bank

## DJ'S

## TIRE & CAR CARE SERVICE

BEAT THE HEAT!

We'll Service Your Automotive



Airconditioner

"Down to Earth Prices"

BATTERIES • SHOCKS  
FRONT END ALIGNMENT

COMPLETE SERVICE

MAJOR & MINOR TUNE-UPS

We Accept Mobil Credit Cards  
VACATION TIRE SALE



851-4606

13712 S.R. 302  
GIG HARBOR, WA 98335



# A Woman's Heart

by Elaine Forch



## "The Malady" Part I

My friend suggested that maybe I was having a nervous breakdown. I've never really understood what that meant but it sounded like I felt so I decided she was probably right. I wondered if I would end up screaming hysterically while they carried me away or if I would simply retreat to my bed and pull the covers over my head. I knew that something had to give because I was definitely out of control. Life had dealt some cruel blows recently, it was true, but I had determined to accept what I could not change and go on to make my life the best it could be. I had mentally and spiritually "overcome" - but my body had other ideas.

The body, mind and spirit are supposed to be one, but mine had separated with each part going it's own way. My spirit was communing on a higher plane while my mouth was busy saying things my mind didn't know I was going to say. I forgot everything, just as if my memory cells were suddenly programmed to self-destruct after a shelf-life of five seconds. I couldn't sleep and then I couldn't stay awake. I often felt flushed, dizzy and disoriented. I felt weak and exhausted all of the time. I decided that I was being too easy on myself, so I tried to slap myself into shape. But no matter how

hard I tried to get myself together, I just couldn't seem to get it connected.

Although my body was slow and sluggish, my mind was hyperactive, unable to quiet down or concentrate on anything for more than a few seconds. Meaningful conversation took more effort than I could usually muster. Sometimes I felt like I was an actress in a movie that was being shown in slow motion. Many times I felt like I was walking beside myself, watching the strange antics of this person that I used to know.

I couldn't seem to get enough to eat or drink and I was gaining weight at an alarming rate. My aerobic program became more and more difficult because my arms and legs felt like they were weighted down with cement. My vision was blurry and my head felt like it was stuffed with cotton. I couldn't think. I began to have anxiety attacks over simple tasks like balancing the checkbook. I forgot to pay bills or to do basic household chores. I was literally falling apart.

Finally, a stubborn infection sent me to see my doctor. He ordered a glucose tolerance test. The diagnosis was made before the six-hour test was complete. "You have diabetes" were the only words I could comprehend. Disjointed words faded in and out mixed with my feeling that this was all some kind of dream. Familiar words surfaced occasionally, words like "blood sugar" and "glucose" and "pancreas." But my mind cleared immediately when I heard the words "insulin shots." This was too much.

As steamy tears trickled down my face, I tried to bargain. Couldn't I just have a nervous breakdown?

# KPCCA Auction donor list grows

The list of donors to the Civic Center's next money-raiser - the October 1 Auction continues to grow! If you wish to add your name, please call Ann Larson 884-3562, Claudia Loy 884-3937 or Shirl Olson 884-2481.

- |                                   |   |
|-----------------------------------|---|
| Northwest Aerobics                | 2 months membership   |
| Color Connections                 | Oversized med. mohair sweater & hat   |
| Almond & Rogers                   | 30 minute flight for 2 over Key Pen.  |
| Celebrations by Nadeau            | Sunday brunch for 2   |
| The Framemakers                   | Framed print  |
| Fran & Mike Kent                  | Ski weekend at Shady Hollow trailer park near Mt. Baker (one-night accomodations)   |
| A Clean Sweep                     | 1 chimney cleaning & inspection   |
| Staff Sgt. Bill Hagen             | Green fees for 2 at Ft. Lewis Golf  |
| Telco Credit Union                | 2 framed pictures   |
| Morford's Hallmark Store          | unspecified   |
| J & D Harbor Press                | unspecified   |
| Sandy Newhouse                    | Painting  |
| Beverly Peterson                  | Painting  |
| Rene Moriarity                    | Pottery   |
| Photography by Rene               | \$25 coupon toward wedding/anniv. photo   |
| Connie's Niche                    | Handmade "Welcome Friends" wreath   |
| Sylvia's Styling                  | unspecified   |
| Fashions by Myrtle                | Unspecified alterations   |
| Pacific Northwest Handbag Art     | Fashion wear handbag  |
| Country Mouse                     | \$10 gift certificate   |
| Garden Shoppe                     | unspecified   |
| Horace Kanno                      | Hawaiian PuPus for 6 (hors d'oeuvres)   |
| Huckleberry Inn                   | 2 dinner specials   |
| Dr. Olson                         | Exam and cleaning   |
| Key Center National Auto Parts    | Cash donation   |
| Lakebay Lumber Supply             | Cash donation   |
| Charboneau Const. Supply          | unspecified   |
| Kingsbury Enterprises             | Children's toys   |
| Colony Real Estate                | unspecified   |
| Purdy Topsoil                     | 10 yds of 4-way mix   |
| The Eatery                        | Small meat pizza  |
| Angel Guild                       | Convection oven   |
| Cost Less Pharmacy                | Blow drying hair styling set for men  |
| DJ's Mini Mart                    | 2 zing rings  |
| DJ's Tire Service                 | unspecified   |
| Floatation Device                 | Dinner for 2  |
| Great American Pizza Factory      | 15" pizza with 5 toppings   |
| Key Center Chiropractic           | Exam, consultation and cash donation  |
| Key Center Trading Post           | \$20 gift certificate   |
| Dr. Roes                          | Cholesterol check for 4   |
| Key Stitch Upholstery             | \$100 gift certificate  |
| Key Western Building Supply       | West Bend coffeemaker   |
| Cedar Stream Styling              | Haircut   |
| CWB Cabinets & Wood Products      | Cabinet   |
| Walt's Fine Foods                 | unspecified   |
| Red Dogs                          | \$20 gift certificate   |
| Myr Mar Accounting                | 25% discount on income tax prep   |
| Paul's Towing                     | Lube and oil  |
| Peninsula Iron Works              | \$50 gift certificate   |
| Tall Firs Gardens                 | \$10 gift certificate   |
| Chet's Lakebay Chevron            | Lube and oil change   |
| Crow's Nest Antiques              | Unspecified   |
| Dori Richards' Log House Studio   | 16 x 20 painting  |
| Lonning Saw & Small Engine Repair | Splitting maul  |
| Movie Magic                       | One year membership   |
| Blundell's L'branch Chowder House | Dinner for two  |
| Telephone Utilities               | Telephone   |
| Vicki Henschel                    | One year's aerobic lessons  |
| Dr. Campbell                      | Total chiropractic exam   |
| Sunnycrest Nursery                | 1 night in Victoria BC and tour of Bouchart Gardens w/Claudia and Dale Loy as hosts |
| Active Construction               | 10 yds decorative crushed rock  |
| Puget Sound Bank                  | Polaroid 'Spirit 600' camera  |
| Sunrise Pest Management           | \$25 gift certificate   |

## Flavor of Fall

### Dinner and Auction

**Succulent Stuffed Chicken Breast with Chantrel Sauce**

**Wild Rice • Sauteed Patty Pan Squash**

**Dessert Buffet**

**\$35.00** per couple  
includes \$5.00 Auction Script (\$17.50 per person)

**SATURDAY, OCT. 1st**

**5:30 - NO HOST BAR**  
Hors d' oeuvres  
Wine Tasting - Hoodspout Winery

**7:00 - DINNER**

**8:00 - AUCTION**

Those not attending dinner are welcome to join the Auction at 8:00pm

For Reservations, Tickets or more info contact  
**Claudia Loy, Sunnycrest Nursery 884-3937**  
Civic Center 884-3456

PROCEEDS TO BENEFIT THE PROPOSED PAVING OF THE KEY PENINSULA CIVIC CENTER PARKING LOT.

# VOTE September 20!

# In the Library

Now on hand at Key Centery Library: McClelland, Wobbly War: the Centralia Story; Davies, The Victorian Kitchen Garden; Buchanan, A Weaver's Garden; Trudeau, Doonesbury Deluxe; Menchini, Beatrix Potter Knitting Book; Hunter, Catfish: My Life in Baseball; Born Guilty: Children of Nazi Families; Lopes, The Wall: Images and Offerings from the Vietnam Veterans Memorial; Lively, Penelope, Moon Tiger (a moving and well-crafted novel centered on the character of a woman journalist who covered World War II from Cairo. The author won England's prestigious Booker Prize); and videos "The Insider's Guide to Trout Fishing" and "The Insider's Guide to Bass Fishing."

Banned Books Week is September 24 to October 1. The Washington State Coalition Against Censorship states that censorship activity is growing in Washington State. Libraries, including Pierce County Library, endorse The Freedom to Read Statement and the Library Bill of Rights adopted by the American Library Association. Quoting from those documents:

"We believe that what people read is deeply important; that ideas can be dangerous; but that the suppression of ideas is fatal to a democratic society. Freedom itself is a dangerous way of life, but it is ours."

"Censorship of books, urged or practiced by volunteer arbiters of morals or political opinion or by organizations that would establish a coercive concept of Americanism, must be challenged by libraries in maintenance of their responsibility to provide public information and enlightenment through the printed word."

If you would like to read a banned book, lists of those titles are available at the Key Center Library.

Preschool Storytime will be on



Fridays, September 23 through November 4, from 10:30 to 11 am for ages 3 to 5. Please register in person or by telephone, 884-2242.

LIBRARY HOURS:  
 Tuesday & Wednesday 1-8:30  
 Thursday & Friday 1-6  
 Saturday 12-4

Note: All Pierce County Library branches will be closed Friday, September 16 for staff training.

# Fall Sale

## THE SALE STILL CONTINUES

# 25% OFF

## ALL NURSERY STOCK

(SEPTEMBER 1st to SEPTEMBER 30th)

**EVERY TREE - Rhododendron - Shrub - Conifer  
 Ground Cover - Perennial - EVERY PLANT IS ON SALE**

### Sale

**WATERING EQUIPMENT**  
 Hoses • Sprinklers  
 Watering Cans  
 Nozzles

**30% OFF**

**PEAT MOSS**  
**SUNSHINE**

4 cu. ft. bale  
 reg. \$9.95  
**\$8.95**  
 2/\$13.95

2 cu. ft. bale  
**\$6.95 NOW \$4.95**

We have a large selection of landscaping material and we will gladly help you design your yard or area.

Several varieties of fast growing trees.  
 Different types of Junipers.  
 Over 200 varieties of Rhododendrons.  
**ALL ON SALE**

**PLANT CONTAINERS**  
 Cedar  
 Terra Cotta • Pulp  
 Decorative

**25% OFF**

**Beautiful, Permanent  
 LAVALANDSCAPE  
 ROX**

Several Sizes & Colors  
 1 cubic foot bag  
 reg. \$3.95

**SALE PRICED \$3.49 ea.**

10 bags or more  
**\$2.69 ea.**

**FALL COLOR**

Hardy Garden Mum  
 Ornamental Kale  
 Pansies

HELP for your fall gardening

**ALL GARDEN TOOLS**  
**30% OFF**  
 Hoes • Shovels • Rakes

**884-3937**  
 KEY CENTER

Mon. - Sat 9am - 6pm  
 Sunday 11am - 4pm

SALE PRICES APPLY TO STOCK ON HAND  
 LASTS THRU SEPTEMBER

# SUNNYCREST

NURSERY & FLORAL

# KEY PENINSULA CIVIC CENTER EVENTS

September 1988

Sunday	Monday	Tuesday	Wednesday	Thursday	Friday	Saturday
			14 Aerobics 9-10 am Rocky Bay 12:30 pm Bingo 6:30 pm	15 Aerobics 9-10 am KP Seniors 11-4 pm Karate 7-9 pm Teen NA Cootiettes 609 7 pm	16 Aerobics 9-10 am Rocky Bay 12:30 pm Skating 6-9:30	17 Twilite Dance Club 9 pm - 1 am
18 Faith Chapel (am)	19 Aerobics Rocky Bay Volleyball 7-9 pm Teen NA	20 Aerobics 9-10 am Bob Smith NA Room	21 Aerobics Rocky Bay Bingo	22 Aerobics 9-10 am KP Seniors Rocky Bay 12:30 pm Teen NA	23 Aerobics Rocky Bay Skating	24 KPCCA Can Dance the 'Fender Benders' 9 pm - 1 am
25 Faith Chapel (am) Skate Party 1:30 pm	26 Aerobics Rocky Bay	27 Aerobics	28 Aerobics Rocky Bay Bingo	29 Aerobics Rocky Bay KP Seniors	30 Aerobics Rocky Bay Skating	

## KP Lions turn paper into community help

by Hugh McMillan

The Lions' Club thanks our community for the support you've given our used paper project. Our collection boxes, located at Walt's Find Foods in Key Center, The Garden Shoppe in Wauna-Minter area and in the area near the Purdy PSNB, have been a good source of funds for our Club. We need these funds to provide eyeglasses and hearing aids to the needy, to give financial support to KP Community Services (Food Bank), to assist our KP Health Center's drug and alcohol counselling program, to provide scholarships for the PHS program, to provide funds for emergency eye surgery, to support our Club's Drug and Alcohol Awareness program, to pay for materials to repair a needy person's home, to help a group of young people determined to break the narcotics habit, to pay for the annual PHS seniors' breakfast and, in general, to provide funds which make it possible for us to help those in need. Without your help, Key Peninsula, these would be a lot more difficult to accomplish.

We should point out that only our three collection boxes, properly labeled with the Club's logo, and another box for the Firefighters' Burn Center, are legally available for your contributions. The wooden boxes, some red, some grey, located throughout the area belong to a private individual for personal gain. We are taking up the subject of their legality with the proper authorities and encourage you to deposit you used paper only in the Lions' Club or Burn Center boxes. Then you'll know that you are helping our community.

You may deposit any kind of paper that you receive in your mailbox. That includes magazines, advertisements, brochures etc. but no cardboard, please.

# KEY WESTERN

## BUILDING CENTER KEY CENTER



- PLUMBING FIXTURES
- ELECTRICAL EQUIPMENT & SUPPLIES
- TRUE VALUE HARDWARE & TOOLS
- PAINT-LUMBER-PANELING
- GARDEN SUPPLIES & EQUIPMENT
- HOUSEWARES & SPORTING GOODS

**OPEN SUNDAYS  
10 -3**

OPEN Mon thru Sat. 8-5

**884-2311**  
or 884-3321

**AREA WIDE  
DELIVERY**

**FOR THE DO-IT-YOURSELFERS and PROFESSIONALS**