

### INSIDE



Under My Hat  
pg. 2



Critter Corner  
pg. 7



Flavor of Fall  
pg. 8



Did You Know?  
pg. 16



The Civic Center's "Train of Thought" leaves Key Center heading for The Civic Center. The float won 1st Place for Best Use of Theme and was dedicated to the memory of Wilbra Haines, who past away on July 31st.

## Another Great Firemen's Muster

The second annual Key Peninsula Firefighters' Association-sponsored firemen's muster was a big success. Held at Volunteer Park Saturday and Sunday, July 20 - 21, the Association played host to seventeen competing fire departments and muster teams from throughout the Pacific Northwest and another twelve with antique equipment for display.

Theresa Green, Channel 11's news anchor, was Grand Marshal of the muster. "She's the sweetheart of fire mustering," declared Bob Fearnough, chairman of the event. As part of the Home Centennial celebrations, she led a parade of about 30 fire engines and several antique vehicles from Olympic Vintage Auto Club through Home.

KP Fire Department Deputy Chief Fred Ramsdell got his wish: "People understood that this wonderful show was not just for firefighters, it was for everybody, and this year they came." They shared in the excitement of this year's fast-paced, crazy, serious, ten-ring circus-like funfest.

The KP Firefighters Association had its modestly priced breakfast for all who wished on both mornings. There was plenty of food, from ostrich meat to spaghetti, offered by vendors. The Key Peninsula Lions ran a "beverage garden" on the tennis courts. The courts were later turned into a dance hall for all who wished to kick up their heels.

Old Town Photo of Old Town Tacoma took panoramic photos of

all of the assembled fire apparatus and antique cars and muster teams using an antique panoramic camera which employs seven inch wide, limitless length film. Fearnough reports that, "a couple of guys from Seattle's team got in the photo at the beginning then ran to the other end of the cluster of equipment to be photographed a second time in the same photo." Anyone interested in obtaining a copy of this unique photo should contact Fearnough at 884-2034.

At Right Forrest Grove, OR's 1906 American La France Steam Fire Pumper.

Below: Tualatin Valley's 1918 American La France type 75 rotary gear pumper on the move in the motorized hose wagon, Class 1 contest. They came in second ... to KPFD's 1919 American La France.

Photos by Hugh McMillan







## Under My Hat

by Irene Zimmer  
Facility Manager

School days, school days, don't want to grow up to be fools days! School starts September 3rd, Skate Night starts up on the 13th of September, Indoor Park on September 17th, Dog Obedience classes on the 10th - what a busy month ahead!

Pioneer Day was quite a success. Everyone I talked to said that they were having a fine time! The "Beer Garden" was inside the Civic Center instead of the tennis courts because of predicted inclement weather. Most I talked to preferred it to the great outdoors, and we still had quite a crowd at midnight when we shut down.

The parade was grand, and the Civic Center float won a blue ribbon. Krys Wylie was the creator of the float, and Tim Hale was our driver. Thanks to all who helped make our first float a success.

We're still looking for donations to the Flavor of Fall Dinner & Auction. Contact Claudia Loy at Sunnycrest Nursery if you have an item to donate or just want to donate your time as a volunteer. Call 884-3937.

I enjoyed myself at Old Timers' Day in Longbranch. I love those logging competitions! There are suspenders as far as the eye can see at these events! Not one belt! Lots of goodies to look at and buy, and the antique cars were beautiful. I

have to admit that it makes me nervous when a car that was new when I was in high school is now considered an antique!

Get your tickets for the Flavor of Fall quickly before they are all gone. Reno Night is November 2, the annual Halloween Party October 31st, Thanksgiving on November at these events! Not one belt! Lots of goodies to look at and buy, and the antique cars were beautiful. I have to admit that it makes me nervous when a car that was new when I was in high school is now considered an antique!

Get your tickets for the Flavor of Fall quickly before they are all gone. Reno Night is November 2, the annual Halloween Party October 31st, Thanksgiving on November 28th and Christmas is coming!

Don't forget, the KP News is no longer mailed to all houses on the peninsula. If you want to make sure you get your paper, subscriptions are just \$10 a year. There is a list in this month's paper of places you can pick up your copy when you are out and about.

Come join us at the KPCCA Board meeting on September 12th at 7:30 pm. Get involved with YOUR Civic Center! The meetings are always on the second Thursday of each month. Look forward to seeing you there! See you next month.

## Local Women Receive Scholarships

The Gig Harbor Chapter of the American Association of University Women (AAUW) awarded college scholarships to five local women at its annual picnic August 15.

Women continuing their college educations with the help of AAUW scholarships are: Sara Cooper, an Evergreen State College graduate working toward fifth year certification in Education at the University of Washington-Tacoma; Andrea Heimbuch, who is currently studying accounting at City University while working part-time as an accountant; Marta Larson, a case manager at Baby's First Steps Foundation who has enrolled in the Childbirth Education Instructors' course at Bates Technical College; Jennifer Reynolds, just completed an Associate of Arts degree from Olympic College and is enrolled at the University of Washington, and Karmen Whitfield, an administrator at Tacoma General Hospital

who will study Health Care at the University of Washington-Tacoma.

Marta Larson is the first Taylor-Barta Scholar awarded by the Minerva Scholarship Fund. AAUW member, Ruth Taylor, established the endowed scholarship in memory of her daughter, Karen Barta. The Taylor family and AAUW members contributed to the fund, and this year the Taylor-Barta Fund reached the initial endowment goal of \$10,000.

AAUW members raise scholarship funds through the sale of Sally Foster gift wrap and Entertainment book.

AAUW, founded in 1881, is open to all graduates who hold the baccalaureate or higher degree from a regionally accredited college or university.

For membership information, write AAUW, P.O. Box 2705, Gig Harbor, WA 98335 or call Dawn Gwaltney at (206) 851-3834.

## Old Timers' Day '96



Jason Henningsen and John Marr sawing their way to second place in the Hand Bucking Contest under the watchful eye of Bruce Parsons who referred the contest.

A split second after the log dropped by Jordan Henningsen (on his knee) it smashed its target stake into the ground and won first place in the Tree Falling Competition. Photos by Hugh McMillan.

by Hugh McMillan

"I figure at least 2,000 came to Old Timers' Day," said Earle Saxer, president of the sponsoring Key Peninsula Community Services/Foodbank Board of Directors. "We sold over 400 hamburgers and as a general rule, one in four people in attendance purchased one."

They all seemed to be having a wonderful time ... from little kids to octogenarians. The steam donkey engines chuffed and blew their ear-splitting blasts and skidded logs between themselves. Loggers competed for best time in small and large saw bucking contests, accurately dropped "trees" to drive stakes into the ground, raced each other in the wrapper throwing contest, and two-man hand-bucked chunks off logs, "just the way it was done a hundred years ago," said Rhys Wood who served as master of ceremonies from the back of a flatbed truck where his "son" Sally made sure his every word was accurate.

Food was served from the kitchen of the Longbranch Improvement Club and at an outdoor booth in a manner which "passed the Pierce County Health Department's inspection with flying colors," according to John Van de Brooke, KPCCS Board secretary.

The "Classy Chassis" show of antique cars was pronounced a success by its chairman, Mike Coffin, KP Lions' Club president. "Although we didn't have as many contestants as we'd hoped for," he said, "we've been told by the experts that for a first time show, we did a lot better than most. There were three other similar events in the Puget Sound area at the same



time, "and that didn't help," said Coffin.

Cheek to jowel with the old cars, Olympic Air, Inc. provided helicopter rides, "right over your house, if you want," according to one of many people waiting to take off.

Ed Jaggi, Bruce Parsons, and Jason Henningsen took first, second and third place respectively in the small chain bucking competition and Jaggi again took a first in large saw bucking in which Dale Boquist and Jason Henningsen took second and third.

In obstacle choker setting, brothers Jason and Jordan Henningsen took first and second, Boquist third. The grueling hand bucking contest found Jordan Henningsen and Jeff Davis in first place, Jason Henningsen and John Maars in second. In the wrapper throwing race to see who could most quickly secure a load of logs on a truck, Jason Henningsen, Beaver Marcum, and Mark Hahn were one, two, and three respectively.

In his first-ever entry in the tree falling competition, Jordan Henningsen grabbed first place with an incredibly precise tree fall smack on the target stake which splattered into kindling on its way into the ground. Ed Jaggi and Bruce Parsons were second and third place winners.

The drawings for the raffle gave \$1,000 to Jim Roupe of Fox Island, \$500 to Kevin Parks of Gig Harbor, and a \$250 shopping spree donated by Walt Schmidt went to Martha Marxham of the Longbranch area.

"All in all," said the event's overall chairman Jim Carrou, "despite some of the entertainers failure to show, we're very happy with the way everything turned out; even the weather was glorious."



## KPCCA Board Meeting Minutes

The meeting was called to order by the president. The minutes of the July meeting were approved as published. Correspondence included a donation from the Angel Guild of \$2,000, to the general fund. This is greatly appreciated. Also received: a letter from a reader not living in this area who complimented the *KP News* on a fine paper, an estimate from Milgard for windows for both buildings, and a letter from the Postal Service offering a seminar to explain the revision for non-profit rates on bulk mail. The treasurer's report was accepted. There will be a special meeting on the budget August 15 at 7:00 p.m.

**MANAGER'S REPORT:** Western furnace sent a man to check out the furnace problem. The system will be replaced per HUD so that we have an adequate system to heat and cool the Center.

**NEWSPAPER:** The paper made \$386.12 for the August issue. September will be the first issue that will not be mailed. The savings on postage alone will be about \$850. We have received several paid subscriptions. Hopefully the scanner will be up and running soon. There are still some outstanding bills on the Destination issue to be collected.

**TOPS:** The membership has grown so much, a second chapter has been organized. They had a lovely float in the Pioneer Days parade with the state queen from this chapter.

**LIONS:** The group sold ice cream at Pioneer Days. There will be an antique car show at Old Timers Day at Longbranch and so far there are over 100 entries.

**SKATING:** This activity will resume in September. They need someone to run the kitchen.

**HISTORICAL SOCIETY:** A group will be going to the new State Museum in Tacoma on August 24. There were many visitors to our museum on Pioneer Day. A new item has been acquired: a 1918 wooden bicycle wheel.

**RENO NIGHT:** Hopefully, we will be having some training sessions for dealers in September. The event is scheduled for November 2.

**FLAVOR OF FALL:** Claudia said she has a great group helping here. Donations are coming in every day and some really great items will be auctioned off. The theme will be

South of the border and a great menu is in store.

**PIONEER DAY:** A great day! All the hard work turned the day into a fun day for all. The Center's float in the parade won a blue ribbon. The figures on what we made will be in for September's meeting.

Jerry Benoit resigned as vice-president. Mike Coffin was elected to fill that spot, leaving two at-large positions on the Executive Committee to be filled. The annual election will be in November for all positions. Kathy Hale was elected to be the representative for Lake Holiday. The nominating committee will be Kathy Hale and Virginia Liebergesell. The KPCCA, KP News et al. have been named in a lawsuit brought by Richard Sorrells for an article we published in the KP News about his collection of cars.

The meeting adjourned at 9:15 p.m.

Respectfully submitted,  
Donna Bosch, secretary

## Ashes Meeting

The Ladies Auxiliary to the Fire District No. 16 will have their first meeting this fall on Thursday, September 5th, 1996, at 10:30 a.m. It will be a potluck.

There are no dues to join or belong, just come! Anyone who lives in the vicinity of Fire District 16 is most welcome. We need new members. If you have any questions, feel free to call any member, Alice Palmer at 884-3882, Darlene Brown at 884-3091 or Marie Schmenka at 884-2221.

## A View From Vaughn Elementary

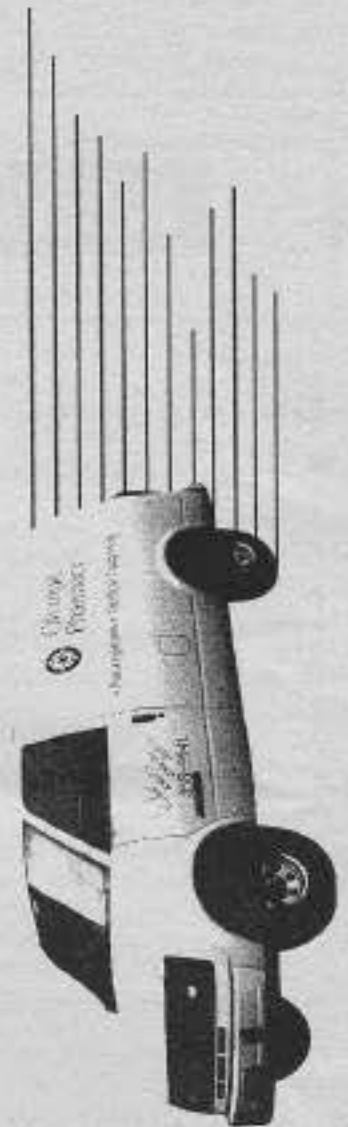
by Diane Ramsey,  
Volunteer Coordinator

It seems school just let out, but here it is again! School starts Tuesday, September 3rd. During the dog days of August, school and rain seemed so far away, but they're both going to come. Time to buy new sneakers for the kids, see if the old winter coat still fits and check the firewood supply! Time to think just a tiny bit on what to do when the rain really sets in.

Needless to say, I have lots of ideas and lots of things to do for just about everyone. Just about anything you can do, you can do it at the school! We've found that students do better at their academic studies when they learn other skills. If you sew, paint, make furniture (or flies!), repair cars, count money, sing, dance or play an instrument, whittle, or just play checkers, you can do it at the school. Of course, we still need reading volunteers. Thirty minutes a week can change a child's life. How about a room full of kids to call you grandma, or uncle. Would your boss give you a couple of hours off to come talk about your company? (I guarantee you it will make the paper!) You may have more ideas!

Vaughn Elementary is a public school and we need the public in it. We need your skills, your talents, your interests, and your heart. What you get back is beyond words. I would be very glad to talk if you gave me a call at Vaughn Elementary, 884-5700.

**AT OLYMPIC,  
WE DELIVER  
THE GOODS  
IN MORE  
WAYS  
THAN ONE.**



At Olympic, we offer the convenience of free delivery on many of the products we sell. We also deliver the widest selection of quality healthcare specialty needs like braces, post surgical supplies, wheelchairs and much, much more. And, we deliver low everyday prices on all your prescription and over-the-counter drug needs. Plus, we deliver the extra convenience of direct billing to your insurer and a drive-up window. Now that's what we call delivering the goods.



**Olympic Pharmacy**  
HEALTHCARE SERVICES

*Just what the doctor ordered.*

Pt. Fosdick Medical Center  
4700 Pt. Fosdick Dr. NW • 858-9941  
All Major Credit Cards Accepted  
M-F 9-7 Sat 9-5

### The Key Peninsula Civic Center Needs Your Donations!

**Yes, I want to contribute to the Key Peninsula Civic Center!**

Name \_\_\_\_\_  
Address \_\_\_\_\_ Phone \_\_\_\_\_  
City/State/Zip \_\_\_\_\_ Amount Donated \_\_\_\_\_  
May we thank you in the *Key Peninsula NEWS*? YES \_\_\_\_\_ NO \_\_\_\_\_  
If donation is a memorial, place name here: \_\_\_\_\_

Mail donations to: KPCCA, P.O. Box 82, Vaughn WA 98394  
Checks may be made payable to KPCCA. *Thank you for your support!*

### Key Peninsula Civic Center Executive Committee

Tim Kezele, Pres. 884-4538  
Sylvia Haase, Vice Pres. 884-3603  
Michael Coffin, Vice Pres. 857-4285  
Stephanie Zampini, Treas. 884-9821  
Donna Bosch, Secretary 884-3320  
Dave Freeman, Past Pres. 884-2313

### Key Peninsula News Subscription Form

P.O. Box 3 Vaughn, WA 98394

**YES, I would like to subscribe to the Key Peninsula News at \$10.00 per year.**

Name: \_\_\_\_\_  
Address: \_\_\_\_\_  
City: \_\_\_\_\_ Zip: \_\_\_\_\_



## VFW News

The Veterans of Foreign Wars and Ladies Auxillary of Post 4990 are pleased to announce that they will again sponsor the Americanism Essay and Voice of Democracy Programs this year.

The Americanism Essay Program is for grades 3 through 9 with the theme "What Makes America Great". This year's theme for the Voice of Democracy audio and written essay is "Democracy-Above and Beyond." This is available to the 10th, 11th and 12th grade students. Both programs are available to students in private, public and parochial schools and includes

home study students with grades equivalent to age. Handicapped students are also eligible as outlined in the program guide. Entries have to be turned into the chairman no later than the 1st of November. Chairman for the Americanism Essay program is DeaBee Blum, 884-9982, and for the Voice of Democracy program, Joe Barrow, 884-5585. Entry forms and information have been sent to the schools.

This is a great opportunity to compete for local, state and national prizes. All students are encouraged to participate.

## Preschool Music Time

Gather, gather sing the song ... we will be gathering at a new location this year. Many thanks go to the K.P.C.C.A. for allowing us to use the Civic Center for last spring's classes. Thanks also go to all those who participated last spring as well. We hope you and many others will join us this September in the building that now houses the *NEW Peninsula Preschool*. It is located in the gray building with the red roof up above the big blue building right in Key Center.

For those who may not know what Preschool Music Time is, it is very much like library story time. With weekly themes based on an underlying preschool curriculum, the children spend an hour singing, playing and moving to music. We have a mascot named Leo and sometimes there are other special guests as well. Within that hour is also a short time to make a little craft item that goes with the theme that day.

There is a small fee of \$2.00 a week

for this fun program. Parent help is encouraged as we may have as many as 20 children in the class. Class day and time will be Tuesday mornings from 10:00 a.m. to 11:00 a.m., starting September 17th. Call instructor Kathie Broderson at 857-5031, to put your child's name on the class list.

"Music is like love in that with it you can grow."

## Indoor Park

Indoor Park will be starting up again, Tuesday, September 17, 1996. Come and meet your old friends and make some new ones.

We are looking forward to a new season of fun and laughs in our Little Tykes filled gym.

If you have questions call Shari at 884-9120. We are also still accepting Little Tykes donations.

## KEY DATES

### BUSINESS / PROFESSIONAL GROUPS

KP Business Assoc.	Sep. 5 - 7:30 am	Home Port Rest.
Fire Fighters Assoc.	Sep. 19 - Noon	Horseshoe Lk. Rest.
	Sep. 24 - 7:00 pm	K.C. Fire Station

### CIVIC ORGANIZATION

Cootiettes	Sep. 19 - 7:00 pm	KPCC / Whitmore Rm.
KPCCA Board	Sep. 12 - 7:30 pm	Civic Center
KPCS Board	Sep. 12 - 7:30 pm	Comm. House/Home
KPHC Board	Sep. 26 - 7:30 pm	Health Center
KP Lions	1st & 3rd Wed. - 7:00 pm	KPCC / Whitmore Rm.
VFW & Auxiliary	Sep. 9 & 23 - 7:00 pm	KPCC/VFW Room

### COMMUNITY SERVICES

Adult Literacy classes	Call for appt.	851-6552 / Gig Harbor
Angel Guild	Sep. 23 - 10:00 am	Brones/KC Library
CHILDREN'S HOME SOCIETY Family Resource Center	Mon. thru Fri. 9 am to 4:30 pm	Key Peninsula Civic Center, Lower level. Call 884-5433
Food Bank	Tues-Fri 10:am - 3:00 pm	Comm. House/Home
FREE Branch	Sundays 2-3 pm	Comm. House/Home
Hot Lunch for Seniors	Wednesdays: NOON	Comm. House/Home
Also food & clothing assistance: for more info, call 884-4440, 884-4514, 857-4780		
Immunizations	Thurs. 9 am-2 pm	GH Chamber/Comm.
Overeaters Anonymous	Wednesday at 7:30 pm	St. Nichols Church
Penel on the Peninsula Friendship Dinner	Every Sunday 5pm	KPCC/WmRm
Seniors Exercise Program	Tues. & Thurs. 8:30-9:30 am	Comm. House/Home
WIC (Womens, Infants & Children)	Tues. 8:15-4:00pm	KPCC/Wm.Rm.
	Call 884-3835, Tuesdays for an appointment.	

### PUBLIC MEETINGS

KP Fire Comm.	Sep. 11 & 18 - 7:30 pm	KC Fire Station
KP Park & Rec.	Sep. 9 - 7:00 pm	Brones/KC library

### SELF-HELP GROUPS

AA - Mon. & Fri.: 8:00pm	Sat/Sun.: 6:00 am	KP Comm. Services
Carogivers Support	Sep. 12 - 7:00 pm	Library/ Brones Rm
TOPS - Tuesday Mornings-Weigh-in 9:00 am-Meeting 10:00 am		VFW Rm. at
TOPS - Tuesday - Nights - Weigh-in 6:15 - Meeting at 7:00 pm		KP Civic Center


### SOCIAL & HOBBY GROUPS

Bayshore Garden Club	Sep. 20 - Meeting	Longbranch Imp. Club
K. P. Hist. Society	Sep. 10 - 7:00 pm	-884-4538 for info.
Longbranch Imp. Club	Sep. 18 - 7:00 pm	Longbranch Imp. Club
Peninsula Neighbors	Regular meetings resume in September	
LB Fuchsia Society	Sep. 5 - 7:00 pm	Library/Brones Room
Ruth Circle Meet	Sep. 17	Longbranch Church
Senior Society Lunch	Thursday - NOON	KPCC/Wm.Rm

NOTE: IF YOU WOULD LIKE YOUR ORGANIZATION LISTED HERE, PLEASE MAIL INFORMATION BY THE 20th OF EACH MONTH TO:

DATES: - KP NEWS, P.O. BOX 3, VAUGHN, WA 98394

ART CLASSES & SALES



### Dori Richards'

## LOG HOUSE ART STUDIO

807-206th Ave. Ct. KPN  
LAKEBAY, WASHINGTON 98349  
206-884-4822

**Art Classes**  
for Children & Adults  
and Home Schoolers.

Call for more information.

Directions: At Lakebay Post Office in Home, go 2 1/2 miles southwest on Herron Road to the "Y" sign. Turn right on 206th. Follow signs and go 1/4 mile into property to House of Logs. Do NOT stop at Red House.

## KEY PENINSULA NEWS

To Subscribe, Please Write, Call or Fax:  
Key Peninsula News  
P. O. Box 3, Vaughn, WA 98394  
(206) 884-4699  
\* Fax (206) 884-4053

Key Peninsula News is published monthly by Key Peninsula Civic Center Association, d/b/a Key Peninsula News here in our offices in the basement of the old Vaughn High School building in Vaughn, Washington. Copyright 1995-1996 with all rights reserved. Reproduction or use, without permission, of editorial or graphic content in any manner is prohibited. Office is located in the Civic Center in Vaughn. Annual subscriptions (12 issues) are available for \$10. Single copies are free at the newspaper office and at various distribution points located on the Key Peninsula. Over 14,000 people live in this distribution area. Mailed single copies are \$2.00 prepaid. Deadline for articles and ads is the 20th of each month.

OUR GRATEFUL THANKS TO ALL WHO CONTRIBUTE TO THE KEY PENINSULA NEWS!

EDITOR: Irene Zimmer  
AD SALES: Jan Sparks  
COMPOSITION: Combined Effort  
PRODUCTION: Alice Tramil  
ACCOUNTS: Patti Olsen  
DISTRIBUTION: K.P.C.C.A.  
STAFF PHOTOGRAPHER:  
Hugh McMillan

PROOF-READERS: Sylvia Haase,  
Virginia Liebergesell  
NEWSPAPER BOARD:  
Dave Freeman, Sylvia Haase

The opinions expressed herein are the opinions of the writers and do not necessarily reflect the views of the publishers or staff. Submissions are used on a space-available basis and may be edited if used. No religious or political material.



# Letters To The Editor:

Editor:

When the Wal-Mart controversy started, I became interested. It has always been my opinion that everyone in America should have equal opportunity. My experiences with many of the "original merchants" on the Peninsula left me feeling "taken" or "gouged" with high prices. It forced me and many others to develop a habit of driving across the Narrows bridge to get "fair pricing".

I threw my support not necessarily behind Wall-Mart, but behind any new business that offered relief from the "monopoly" that many merchants here held. I was let down to find out that the Peninsula Neighborhood Association was not what I thought it to be, but rather a clique that catered to special interests, and pushed emotions to levels of mob mentality.

In a letter to the editor I compared the plight of some Peninsula merchants to that of a cat that kept eating baby birds, baby bunnies and baby squirrels until it itself was eaten by a coyote. I attended a meeting with Peninsula residents and county council members. I dressed in mountain man rawhide, and tried to offer some balance by supporting Wal-Mart's right to "homestead" here on the Peninsula. It was like a lone voice "crying in the wilderness".

I still stand firm on fairness to all businesses and strongly against "gougingly" high prices. However, new evidence has emerged that has changed my opinion of Wal-Mart Stores, Inc.

Through the scandal about Kathy Lee Cosby, I have discovered that Wal-Mart stores obtain a lot of merchandise from third world countries where, not only workers are exploited, but children as well to make these products.

For these reasons I am withdrawing my support from Wal-Mart Stores, Inc. I will not shop at Wal-Mart, or any other store that participates in such practices. No one, nor any business has the right to exploit working people. And no one will get away with exploiting children as long as I can stand and fight.

"Sagebrush Sam" (McCoy)

### Hey Kids!

Warm up your wheels, Skating is ready to begin again!  
 Where? Here at the Civic Center  
 When? Friday, Sept. 13th  
 For: 8th Grade and Below  
 Time: 6:30 - 9:00 p.m.  
 Cost is \$3.00  
 Parents skate for FREE!!  
 Remember: Parents need to escort children inside building and come inside to pick children up, no parking lot drop offs!!

Dear Editor:

I would like to thank the following people for their contributions to the Pioneer Day Float for the Civic Center:

For their effort in building the float no matter how many hours spent, I would like to thank Melina and Jim Norman, Fred Ramsdall, Terry Myers, Irene Zimmer, Gay Williams and John Garrison.

For their donations of items, I would like to say thank you to Sunnycrest Nursery, Key Center Hardware, Gay Williams, Fred Ramsdall and friends, and Rose Malsagren.

I would like to personally thank Jerry Myers for all his help and Irene Zimmer for giving me the chance to work on it.

I would especially like to say thanks to my parents, Jim and Peggy Wylie for their donation of candy and for babysitting freely so I could work on the float.

Thank you to everyone, including those I didn't mention.

Sincerely,  
 Krys Wylie

Editor:

I would like to set a rumor straight that has been circulating in our community.

I was offered by a buyer to buy my property and business for a fair price. But due to the amount of down payment being a third of the total price, the buyer backed out of the verbal agreement.

I wasn't totally enthusiastic about the sale anyway. So we are still in business and operation as before.

Due to my health, my daughter Teresa is joining the business and giving it new energy. I hope you will welcome her as you have done for me. The business will be here for years to come. Some of you have experienced her voice on the recorder.

Thanking you in advance,  
 John H. Wetzel

# Shobe Enlists In Army

April J. Shobe, a resident of Wauna, Washington, has enlisted in the United States Army.

Sergeant Johnny Moore, of the U.S. Army Recruiting Station at the Tacoma Mall in Tacoma, Washington, says that Shobe has enlisted as an Animal Care Specialist and recently left for basic training at Fort

Jackson, South Carolina. Shobe says she joined the Army for skill training and experience.

She is a 1995 graduate of Peninsula High School in Gig Harbor, Washington and is the daughter of Stephen and Deborah Shobe of Wauna.



In a brave new world,  
 you need a bank that isn't  
 afraid of change.

Seniors surfing the waves.  
 Generation X surfing the Internet.  
 Welcome to the future. And while

we're making  
 introductions,  
**1-800-KEY2YOU**

meet the new KeyBank. We're here  
 to help you manage your changing  
 financial needs. Conveniently.  
 Innovatively. Dependably. Call us at  
 1-800-530-2968. And ride the new  
 wave in banking. Member FDIC.

<http://www.keybank.com>



Key. For a new America.™

## PAINTBALL SPORTS

Finally! Have some fun & only  
 5 minutes from Key Center or Home.

It's an exciting game of Tag,  
 Hide & Seek, and most commonly  
 known as Capture the Flag.

IT'S FOR EVERYONE! Familys, singles, birthdays, church & youth groups,  
 employee picnics, bachelor parties, just to name a few.

For the fun & excitement of over 25 scenarios, multiple fields,  
 shooting gallery, top guns and contests for prizes,

**COME JOIN THE FUN!**

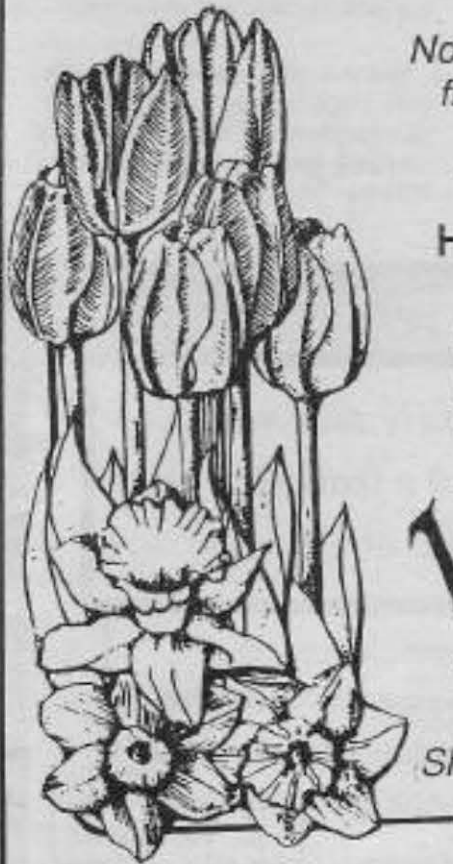
FOR INFORMATION ON RATES, GROUP DISCOUNTS & HOURS

**Call Today 884-5293.**



# Spring Starts Today

...with Van Bloem's flower bulbs



*Now is the time to select the finest of Holland's spring flowering bulbs.*

**Tulips • Daffodils •  
Hyacinths • Crocus •  
and more**

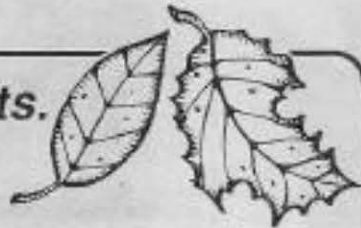
*Plant them this fall and you'll be delighted with the results next spring.*

## Van Bloem's

Vigorous, sure-to-bloom  
Bulbs.

*Shop early for best selection*

**FALL Vegetable Plants.**  
*ready for planting ...*



Lettuce, Cabbage, Spinach, Broccoli  
and more.

Extend your growing season.

## Fall is for Planting

### THE LAWN

Newly planted lawns flourish during warm autumn days and cool autumn nights.

**Grass Seed • Fertilizers •  
Rollers • Spreaders •**

Expert Advice & Friendly Service

**884-3937**



LOCATED IN KEY CENTER • OPEN EVERY DAY  
ALL MAJOR CREDIT CARDS WELCOMED

## TO YOUR HEALTH



by William F. Roes, MD

There are several things you learn about in medical school (like the Black Plague and Smallpox) which you never expect to see. Measles and Whooping Cough also fell into that category until last month when cases of both were reported on the Key Peninsula. It seems appropriate to take a second look at them both to help the community deal with these potentially serious diseases.

Measles (Rubeola) is a viral disease most people over 40 have had, and as a result usually have immunity for. Only recently did we discover that the single childhood immunization for those born after 1957 was probably not enough, and we now routinely give a second booster to kids as they enter the sixth grade. The recent case was from an exchange student visiting the area, and exposing the host family and acquaintances. Measles is spread by airborne respiratory secretions and the disease is communicable from the fifth day of incubation through the early days of the typical widespread red rash. Patients are usually quite sick prior to the rash, with fevers up to 104, significant runny nose, cough, and eye inflammation. There is no specific treatment for measles, but people exposed may benefit from the measles vaccine, typically given

as the MMR. If you think you have measles, call your doctor, but he may not want you to come to his office as you run the risk of exposing others to this highly contagious disease.

Whooping Cough (pertussis) is even more contagious than measles, possibly because of the violent coughing spasms the patients suffer fill the air around them with the bacteria. The period of communicability is also longer, lasting from seven days after exposure to several weeks into the cough. It starts out like a cold, but the prominent whooping cough, sometimes leading to vomiting develops quickly. Most of us received the Pertussis Vaccine as part of the DPT immunization of childhood, but the pertussis immunity slowly is lost over the next ten years, so unless they've actually had whooping cough, most adults are susceptible. The most common pertussis vaccine cannot be given to people over 7 years, but as it is a bacteria, antibiotics can be useful in preventing the disease in those exposed, and are of some value in those with pertussis. Once again, if you think you have the disease or have been exposed, call your doctor but don't go in as you may be exposing others unintentionally.

Finally, we now have the vaccine to prevent Chicken Pox, so this is one disease I might be able to forget about in the future. If your kids need updates on their immunizations or the new Chicken Pox Vaccine, the Key Peninsula Well Child Clinic is still being held every Tuesday at my office at the Key Medical Center at 15610 89th St. in beautiful downtown Key Center.

## Where To Pick-Up A Copy Of The Key Peninsula News

If you would like the *Key Peninsula News* mailed to your home address, please fill out the subscription form on page 3 of this issue, along with a \$10 subscription fee.

- Walts at Lake Kathryn
- Walts at Key Center
- Longbranch Merchantile
- Lu Lu's Homeport Restaurant
- Key Center Library
- The Harvest Time Buildings
- Bridgeway Market
- QFC
- Fenholm's
- Thriftway Market
- Gig Harbor Chamber of Commerce
- Sunnycrest Nursery
- Lakebay Lumber
- Key Center Tavern



# Critter Corner



by Jeffrey W. Irwin, DVM

Canine Parvovirus is a viral disease caused by a parvovirus that was first discovered in about 1978. In the late 70's and early eighties this virus ravished many kennels and was seen very frequently in the general dog owning population. I remember while working at a veterinary hospital in Bremerton, that we would treat at least 1-3 cases a week during the summer months.

This summer I've seen more confirmed cases of parvo than I have in several years. What I've noticed now is that early in the course of the disease, unlike in years past symptoms have been less than "text book." I'm not seeing as many dogs on presentation with bloody stools for example. Usually, affected dogs have been presented because they have stopped eating and are vomiting. Some of these pets are lethargic, others are not. A number of pets with the virus had normal stools or slightly loose stools, several without blood.

I've also noticed that we don't see as many fatalities to parvo as we

used to. There seems to be a larger population of dogs, whether vaccinated or not, that recover from the disease quickly.

There are still, however, a significant number of dogs that require aggressive antibiotic and intravenous fluid therapy in order to survive and some dogs still succumb to the disease with the best of care.

The reason parvo can be so devastating is that it chooses to replicate in rapidly dividing cells in the body, especially the intestinal cells that line the base of the microvilli which are microscopic finger-like projections that absorb nutrients from food. It is these cells that reproduce or replenish the cells near the tips of the microvilli when the tip cells die and slough off. If these tip cells die without being replaced by the damaged base cells, the microvilli eventually "crumble" and slough. This prevents the infected pet from absorbing nutrients via the digestive tract and causes the symptoms of nausea, vomiting, anorexia, diarrhea and in some cases, shock. Overgrowth of bacteria such as E.Coli perpetuates the disease even after the virus dies and can cause toxic shock leading to death.

Because parvo can still be a fatal disease, it is imperative that puppy owners have their dogs properly vaccinated. Vaccination is usually initiated at 6-8 weeks and repeated at about 3-5 week intervals until the puppy is 16 weeks old.

Rottweillers, German Shepards, Dobermans, and Pit Bulls seem to be especially susceptible to parvo and as such should ideally receive another parvo vaccine at about 20 weeks of age.

In most cases we can't be sure a pup is immune to parvo until they have received all their boosters. It is for this reason that incompletely vaccinated puppies should be shielded from contact with unknown or stray animals whose vaccinations are in question. Also, realize that the droppings of carrier animals can, if contacted by the susceptible pet, be infective. So if your pet is a "stool eater", sticks its nose in other pets droppings, or steps in dog feces from time to time, it could contact the virus and if not completely immunized, break with the disease. Remember, your pets can contact parvo even though they may not leave your property because stray animals believe the world is their toilet and have no

inhibition about defecating in your yard. Also, droppings that we have unknowingly stepped on can be carried to our property and infect our susceptible pets.

Prevention, as always, is the key. Be wise and immunize. Don't let your pet become another statistic.



## Reynolds Roost

by Howard Reynolds

Politicians and crabs are creatures who move in such a way that it is impossible to tell whether they are coming or going.

Overheard: "What do you mean, we don't communicate? Just yesterday I faxed you a reply to the recorded message you left me on your voice mail machine."

### MINTER VETERINARY HOSPITAL

JEFFERY W. IRWIN DVM

LK KATHRYN VILLAGE



**\$5.00 OFF**  
YOUR PETS  
NEXT VISIT  
**CALL TODAY**  
**857 - 5460**

OFFER VALID WITH AD THRU SEPT. 30, 1996

**Close to Home**  
**ESPRESSO**

**Mon-Thurs-6am-5pm**  
**Fri-6am-5:30pm**  
**Sat-7:30am-5pm**  
**Sun - 8am - 5pm**

*Next to Walt's in Key Center*

884-4163

**ATB SERVICES**

Accounting, Taxes & Bookkeeping  
Professional Personalized Services  
Members:

Washington State Tax Consultants  
National Assn. of Tax Consultants  
Washington Assn. of Accountants  
Key Peninsula Business Association

*Call for an appointment*  
Dick & Barbara Granquist, E.A.  
P.O. Box 673 Lakebay, WA

## LAND OWNERS

We'll help you manage your lands.  
Professional Forestry Consultants in business since 1970

**Cruising, Timber Sales, Marketing, Appraisals,  
Administration, Short- and Long-Term Management  
Plans, Logging and Road Construction, Land  
Rehabilitation, Environmental Management.**

FORESTRY CONSULTANTS

**Washington  
Timberland  
Management, Inc.**

East 6885  
Highway 106  
P.O. Box 130  
Union, WA 98592  
1-800-775-0795

## CERTIFICATE ACCOUNT

**ELEVEN MONTHS**

# 6.00% APY

New is the time to take advantage of this great rate . . .

For a limited time, Telco Community CU is offering this great rate on any funds transferred from another financial institution. This applies to new certificates opened for \$10,000 or more.

If you live or work in most communities in Pierce County, are employed by one of our select employee groups, or are 50 years old or older and enroll in our VISIONS Premier Program, you are eligible to join.

By being a member you can take advantage of the many financial benefits we have been offering since 1940. Call 333-2016, now for more details.

\*Annual Percentage Yield. \$10,000 minimum deposit. Substantial penalty for early withdrawal. Federally insured up to \$100,000 by the NCUA.

**Main Office**  
Tacoma: 1331 Broadway Plaza

**Tribune Bus. Park**  
Tacoma: 2316 S. State Street

**Olg Harbor**  
4521 Pt. Fosdick Drive N.W.

**Key Center**  
8900 Key Peninsula Hwy. N.

**Puyallup**  
117 14th Ave. S.E.

**Telco Community**  
CREDIT UNION

**333-2016 OR 1-800-562-8130**



## Flavor Of Fall

October 5th is the date for an evening filled with food, fun, festivities and fund raising! The Key Peninsula Civic Center Association will be hosting this 9th annual event in order to raise crucial dollars to keep the Civic Center going. With an operating budget of \$100,000, we depend upon this event for the continuance of programs offered at the Civic Center. Last year we raised over \$16,000 and hope to do even better this year!

The theme this year is LA FIESTA and we have a guest chef, Gloria Soldana, who will offer us a delicious meal concocted of dishes from several countries south of the border. The menu features, as hors d'oeuvres, chips with a variety of salsas, corn tortillas en mole and Mexican bar peanuts. Then there will be an Oaxacan salad in lime with warm flour tortillas. The main dish will be mangoed chicken and pine nut rice with golden raisins served with stir fried red and yellow peppers in cilantro. For dessert we will devour a flan with fruit garnish.

The story behind a mole sauce is that a convent of nuns got the news that a group of monks would be coming by, and as the convent had little in the way of victuals a sauce was made that had everything available in it, including chocolate. Might sound a little odd, but the

sauce is now widely made and is truly a lip smacker.

Talking of such things, one of the offered auction items will be a reading of your lipsticked lip print from a lipologist. She will tell you all about your personality, maybe more than you ever wanted to know. There was an article in *The Seattle Times* recently where the staff of the paper had their lip prints read by this woman and she was alarmingly accurate!

Another auction item that will be interesting, but in a different way, is a bird walk with a member of the Audubon Society.

Auction items are coming in at a steady pace, enclosed is the list as of now, but we still can use lots more!! All items are tax deductible, of course. If you have anything to offer in goods or services, please call Kristen at 884-5420.

Cost for the event is \$25.00 per person. Tickets are on sale at Sunnycrest Nursery in Key Center. If dinner doesn't fit into your plans, we offer you the opportunity to join us for the dessert, including one complimentary drink, and the auction, at a cost of \$10.00.

Questions? Our Event Coordinator, Claudia Loy, can be reached at 884-3937. She will be happy to sign you on as a volunteer for the event too.



Working on decoration for Le Fiesta are Eris Aasland, Sharon Miller, Rose Grant - Decoration's Chairperson, Claudia Loy - Event Coordinator, Wanda May, Ginger Donnelly, and Gloria Soldana - Guest Chef.

### Auction Items For Flavor Of Fall

- Lakebay Fuchsia Society: \$100.00
- Delores & Wayne Arabright: \$50.00
- Leon & Mary Hill: \$30.00 & Framed Prints
- Ann Larson: Dolls
- Bob & Betty Beal: 2 Crocheted Afghans
- Harm & Jane VanSlykeß: Cord Dry Wood
- Active Construction: 10 Yards Top Soil
- Names & Things: 11x14 Framed Name
- Lance Englund: Personalized 1 Hr. Flight for (2)
- Pederson Woodworking: Table
- Donald Hornbeck, D.D.S.: \$50.00
- Nicolson's Men's Clothier: Sweatshirt
- Lloyd Miller: Smoked Salmon, 6-8 lbs.
- Lloyd Miller: Birding Field Trip For 10
- Jilly Eddy: Lip Print Analyst for Group of 20
- First Interstate Bank/Wells Fargo: \$100.00 Savings Bond
- Krys Wylie: Kouch Kameleons
- Bill Kortenbach: 1 Month Karate Lesson for 5 Individuals
- Paul & Molly Holmes: \$50.00
- Ransom's Pond Ostrich Farm & Bed & Breakfast: 1 Night Accomodations
- Farmer George's Meats: Meat Pack, Summer Sausage
- Tim Kezele: 6 Hours Pruning
- Sunnycrest Nursery: Garden Tour
- Ruperts & Civic Center: Wurlitzer Organ
- Tacoma Little Theatre: Theatre Tickets
- Joe and Stephanie Zampini: Homemade Italian Sausage
- Paul Brendle, Key Bank, Key Center: Traffic Flight
- Sylvia Haase: \$50.00



iOle!

iOle!

iOle!



## KGHP Announces Fall Football Schedule, Sportscaster Classes

by Keith Stiles

KGHP (89.9 and 89.3 FM), the Peninsula School District's radio station, will again provide live broadcasts of Peninsula and Gig Harbor High Schools home games during the coming fall season.

The air schedule will begin with the Gig Harbor vs. White River game on Friday, September 13, and the Peninsula vs. Yelm home opener for the Seahawks will be broadcast on Friday, September 20.

Play-by-play action for the Seahawks will be called by veteran announcer Ernie Ernessian, assisted by Peter McConville, marking the duo's fifth year of working together.

The play-by-play action for the Gig Harbor Tides will be called by KGHP newcomers Jim Brogen and Dan Lee. Home games for both teams will be at Roy Anderson Field.

KGHP's live football broadcasts will be preceded by a new feature, "The KGHP Sports Magazine" will be hosted by former "Gateway" Sports Editor, Leland Smith, and

will feature interviews and information from around the high school football scene up to game air time at 7:25 p.m. This year's annual "Fishbowl" game will be played on Friday, November 8, and the Gig Harbor Tides will be the "home" team this year.

KGHP has also announced that it is collaborating with Tacoma Community College this fall in offering a course in Sportscasting for Radio. The class will include four evening meetings, on September 30 and

October 7th, 14th, and 21st, and will convene in the KGHP classrooms at Peninsula High School. The class will be open to high school age students and upwards, and the course fee will be \$39.00.

Students making good progress in the class may have the opportunity to work with the regular sports broadcast teams during the course of the year. For more information call either TCC at 851-2424, or KGHP station manager Leland Smith at 857-3513.

### Tax Tips



by R. Marvin Keizur CTP

The home office deduction has caused much concern in the last few years. Many business persons have found that they could no longer take advantage of this tax deduction. The requirements are that it must be your principal place of business, not merely a place where administrative tasks are performed. Also, the office might not be the principal place of business, but if a substantial amount of your meeting with customers or clients are conducted in that office it can be deducted. Consult your tax accountant for the full range of deductions possible.

### Advertise

In Key Peninsula NEWS

884-4699

**Key Peninsula Lutheran Church**  
884-3312



**Summer Schedule : Sept 1st - Worship 9:30**

Sept 8th - Good News Olympic Rally 9:15  
- Worship 10:30

**Regular Schedule Resumes Sept 15th**

Sunday School 9:15 - Worship 10:30

*A Preschool on Vaughn Bay*

V a u g h n  
C h r i s t i a n  
P r e s c h o o l

A children's ministry of Vaughn Community Church across the street from Vaughn Elementary School.

Now accepting enrollment for the 1996-1997 school year. Children 3 through Pre-K.

To enroll call Mrs. Harris 884-4658 or 884-2269.

### Lakebay Christian Assembly

2406 McEwan Road KPN - P.O. Box 310  
Lakebay, Washington 98349  
Church Phone (206) 884-4854  
Pastor: Tom Olsen

**"The Sunday Family Gathering Place"**

**Christian Growth Groups 10 am**

(Nursery through Adults)

**Morning Worship Service 11 am**

(including Kids Church)

**Wednesdays - Open for prayer 9 am to 7:30 pm**

Uplifting Music

Practical Messages

**A Place where you can enjoy your Faith!**



### Lakebay Community Church

11 Cornwall Rd, KPS  
Lakebay, WA • 884-3899  
Chuck Wahlstrom - Pastor

Evening Prayer

Wednesday Nights 7:00 A.M.

Sunday School 9:17

Worship Service 10:30

Junior Church  
preschool through 2nd grade  
and nursery provided

## Community Bible Fellowship

Meeting at Minter Elementary School

12617 - 118th Ave.

**SUNDAY SCHOOL 9:30 a.m.**

Classes for all ages

**BIBLE TEACHING &**

**WORSHIP 10:30 a.m.**

Nursery Care Provided

*"Warm fellowship, solid Bible teaching, and informal worship atmosphere"*

Pastors: Tim Cedarland & Jeff Olive Youth: Jon Kilcup

For more information call 884-1711, 884-1999 or 857-3215



# Home Centennial Celebration - A Note To The Community

By now everyone is aware of how successful the Home Centennial Celebration actually was. The support from the entire community was testimony to what a wonderful place we share and live in. Even Home, with its diverse collection of individuals, can come together and create an event that will be remembered for a long, long time.

Starting with the weekend of the Community Garage Sale, people from all over the area came to Home, not only take home a much-needed treasure, but many discovered the beauty of the setting. The Blood Drive produced 27 pints of desperately needed blood. One pint was even donated by our County Executive, Doug Sutherland. The wonderful pancake breakfast cooked by Fred and Mary Ramsdell and the rest of the Fire Fighters Association got us all off to a great start. The Volksmarch was also a success. All of these activities were taking place at the same time and really added to the festivities.

How can anyone deny the excitement and fun of having all the Fire Muster participants parade through Home on their wonderful old machines, or apparatus as they lovingly call them? I would encourage them to do that every year. The parade was lead by none other than Home's Engine 16-O. The fireworks were perfect. The crowd was

well behaved and the oohs and aahs said the rest.

The work by the committee to make the final week a success was challenging. The heat of the summer slowed a few things down, but everything seemed to be successful for those who participated.

Marge Adams and the Community House did a great job refreshing the participants of the historical walk. Paul Woodman and Ann Wainwright added to the walk their skills in producing the signs that were put up all around the community. Many people came to Home just to read the signs.

The Reptile Petting Day was a huge success and the Fishing Derby participants had a long hot day but were rewarded for their efforts.

The parade (procession down A street) had more participants than spectators but then again, this is Home. Dr. Roes and The Down Home Band truly added to this by their performance of *Home on the Bay*, words to which were passed to the crowd.

Who would believe Nancy Lind would win the Zucchini Race with her organically grown squash called "Zooie"? Her prize has yet to be determined - any ideas? There were 49 entries in the race and all the "Squash Bucklers" (event officials) declared it a squashing suc-

cess. Again we need to thank John Biggs for his provocative race rules.

Dan Wainwright won the boat race, but has a worthy opponent in 8-year-old George Clouse who won Heat 2B.

The Essay Contest resulted in a memorable collection of insights into living in or near the town of Home in 1996. Winners are Murry Home, Senior High Level. Middle School Level winners are 1st Place - Magdalen Rose Morgan, 2nd Place - Margo Franks, and 3rd Place - Debbie Clark. In the Elementary Level: 1st Place - Sara Rozell, 2nd Place - Megan Beckman, and 3rd Place tie - Courtney White and Holly Willfong. The Centennial Committee has checks and U.S. Flags for all of the winners. They should call 884-4412.

The final event of the week was, of course, the community picnic held at Volunteer Park. This is when an event chairperson is truly thankful for a wonderfully devoted committee. I cannot think of any aspect of this that was not a success. The ribs were delicious, the food was great, music, games, stories, history and an overwhelming sense of community. Many old timers were able to join in the celebration and contribute but it was also the newcomers that made it happen. I think this is a clear indicator that there will always be a feeling of unique pride about Home. How will they celebrate the Bi-Centennial?

Finally, I would like to thank all of the businesses, organizations and individuals that contributed to this event. The publicity alone was priceless. Both the *Gateway* and *Irene Zimmer* of the *KP News* gave us precious space when it was most needed. These are very valuable papers for the community and we all need to support them through subscriptions.

The Home Country Store and Lulu's Homeport Restaurant have been a tremendous support through receiving donations for the Centennial mugs and T-shirts. I don't know if we could have done this without them. Fund raising was a huge success and all the bills have been paid to date.

The time capsule is being planned for early November and it will find its final resting place in front of the Home Fire Station for the next 100 years. More details will be available soon but everyone should find something to put in it.

It would be impossible for me to mention everyone who contributed in some way to the Centennial. Everyone who even donated \$5 for a mug or walked in the parade made this happen.

Again, thank you!  
Sincerely,  
Lori Deacon,  
Centennial Chairman

## Quality Photofinishing



- 1 Hour Photofinishing  
- Portrait Studio

- Film & Camera Accessories

Call Us For All Your  
Photofinishing Needs

851-3582

Pioneer Plaza 6876 Kimball Dr.

- Passport Photos while you wait  
- Same Day Reprints & Enlargements  
- Black & White in-house processing (M-F)  
- Video Duplication & Transfer



Pierce County  
Community Based Services presents...

## workshops on YOUR LAND

Pierce County Community Based Services, in partnership with the Planning and Land Services department, will present the following special workshops:

• September 9, 1996, Peninsula Library,  
4424 Pt. Fosdick Drive NW

Topic: "Water issues including wetlands, flood plains  
and drainage ditches."

For more information call 596-2773 for the July workshop and 591-3745 for the September workshop. Workshops are held from 6:30 - 8:30 p.m.

## LAKEBAY ROOFING

Pierce, Kitsap, and  
Mason Counties

• RESIDENTIAL •  
• RE-ROOFING •

SHAKE • TORCH DOWN • TILE  
COMPOSITION • CEDAR  
SHINGLES

Free Estimates

884-2186

Tom Rolfzen - Owner

WN. ST. CONSTR. REG. LAKEBR\*1570K

SINGLE <sup>from</sup> \$5.56 <sup>each</sup>  
USE  
CAMERAS

Flash, Non-flash and Panaramic



Also 35mm film, 24 exp 100  
or 200 ASA 3 for \$5.00!

Located just south  
of Hwy Center in the  
big red barn!

884-9696

M-F 9:00 to 6:00

CUSTOM CAMERA DESIGN, INC.  
15921 84th St. KPN LAKEBAY

## DRAWING & PAINTING CLASSES

FORMING NOW

with Sally Tjostelson,  
Gig Harbor Illustrator

All Levels Welcome

Call today for information

857-7552



# TOPS News



by Frankie Johnson

TOPS WA #1019 has so much good news for the month! First of all over 20 members took part in the Pioneer Day Parade. Our pre-teens carried the TOPS banner, Alana Middleton portrayed our TOPS Monograph Book, Queen Laural Johnson rode in a red convertible loaned by Grey Chevrolet in Port Orchard. With her were Rosalie Busy, new KIW (KOPS In Waiting), our two 10 year KOPS, Mary Siedelman and Bea Gomsrud, and Barbara Lewis was their driver. Behind the car came Jeanne Sagle proudly holding her sign that she has lost 30 lbs. and reached her goal. Betty Ostoyich had her old clothes that no longer fit since she has lost over 75 lbs. She has them hanging on dowels to show the difference. We have high hopes that Betty will be a State Division Winner. It was great to have so large a group representing our local TOPS.

Jeanne Hess was the best of the TOPS for July, with a 20 1/2 lb. loss for the month. As a group we lost 76 lbs. net weight in July.

Due to our leader and co-leader moving and resigning, we had a special election and now Judy Newell and Arlene Lonning are the new co-leaders. They are coming in with great ideas and wonderful enthusiasm.

If you joined TOPS but aren't coming to the meetings, it won't work for you as a support group. Attendance is the real key to success. All the successful TOPS members have nearly perfect attendance and reap the benefits of all the programs and support offered from the group. Your membership is good for one year from the date you join. If you have missed a lot, you can reinstate with the chapter by \$10 in place of passed dues. We want you back. We want you to succeed in your effort to reach normal weight.

We have heard good news from the new morning chapter (Tuesday at 9:00 a.m.). They are growing in number and had a no-gain meeting!! Congratulations to the new Vaughn Chapter. For information call Frankie at 884-4102 C-U-Slimmer.

## Home Band Hibernates

The Down Home Band has completed its grueling summer schedule, and is now in its fall break, awaiting the annual KC Corral Christmas Pageant. We had a very successful season, with appearances in both the Home Procession and the Pioneer Day Parade. Many people contributed to our new (and hopefully reusable) band wagon, and we'd like to take the opportunity to publicly thank them. First is Leonard Christen who donated his old hay wagon which is the chassis

for the wagon, also Mike DeMoss who utilized his mechanical know-how and Continental Tire who donated our tires. Another big thanks to Ruth and Jim Bramhall for their support and Carla (the painter) Cameron and her son Bryan who lent us the wheels off his Bronco. Finally the brothers Ramsdell (Dale and Fred). Dale, who pulled us through home, and Fred who rules as parade czar of the Key Peninsula. There were many others involved and we appreciate them all.

**We're MOVING!**

**851-4606**

**CONTINENTAL TIRE  
& AUTOMOTIVE SERVICE**

**3207 56TH ST CT NW GIG HARBOR**

BEHIND THE CIMMERON - FORMERLY EXCEL AUTOMOTIVE

**SAME NAME - SAME PHONE**


**SAME QUALITY SERVICE, REASONABLY PRICED**

**NO MORE DANGEROUS ENTRANCE & EXIT - MORE SPACE!**

**PLEASE COME WITH US !!!**

**(ALL WARRANTIES STILL APPLY)**

**(LOOK FOR OUR READER BOARD SIGN FOR EXACT DATE)**

peninsula  Preschool  
Enrolling now for September

Offering preschool Monday thru Thursday  
9 a.m.-Noon and 1-4 p.m.

Ages 2 to 5yrs. old

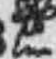
X  
15406 - 92nd St.

Century  
21

302

Key Center

Please call

**884-1203** 

**COUPON**

with coupon

Regular Cut \$8.50

Senior Cut \$5.50

All coupons expire: 9-30-96

**CUTTER  
BUG**

The Family Hair Cut Place

**884-7633**

(Next to the Vaughn Post Office)

Nails  
by Lynn



KC Corral Key Center

**884-5999**

Gels • Acrylics •  
Manicures • Pedicures

**REGIONALLY ACCLAIMED  
"SOUTH SOUND'S BEST BBQ"**

Located in the unique western setting of KC Corral at Key Center

**oliver's  
Smokehouse  
Grill**

"Come and Get It!"

9013 Key Peninsula Highway, Key Center, WA **884-1202**

We offer a selection of fine N.W.

Micro Brews featuring:

Alaska Amber Ale

Red Hook ESB, Thomas Kemper

and introducing Wilmer Bros.,

Hefewiezen and Blackbier

OPEN 8am to 8pm  
Tues., Wed., Thurs., & Sun.  
Fri. & Sat. - 8am to 9pm  
Closed Mondays  
Take-out orders welcome



# Foot Notes



Plantars warts are caused by a virus that triggers an enlargement of the skin tissue surrounding areas invaded by the virus. These areas become painful when one walks on these tumors or growths. Other than causing pain, there is apparently no other harmful effect from this problem.

In an early stage, the areas look like small pieces of pepper stuck on the skin. Growth takes place inward and so the areas can become quite deep and painful, but not appear to be large or serious.

Treatment options are many and all involve killing the virus and removing the surrounding growth of tissue. Most common methods of treatment are freezing, burning by

acid, cauterization, or laser. Over-the-counter "Wart Off" medication is an acid preparation and can be effective if used early enough. However, the over-the-counter preparation will not be very effective if the warts are large enough to cause pain and so you should see your physician.

In treating this problem, as with all problems of the foot, it is important not to create scar tissue on the bottom of the foot as this can lead to permanent irreversible scar pain. Treatment should be cautious to prevent scarring. Please do not try to remove these by cutting them out. During the course of treatment pain can be alleviated with correct padding and the entire process can be pain free.

It is rare to see Plantars Warts in persons over 40 years of age. That is one thing you 30-er's can look forward to!

Claudia J. Addy, D.P.M.

## Dog Obedience Training Classes

Does your dog pull you down the road? Run off? Jump up? Misbehave? Bring your dog to Shari's Dog Obedience Class. The class covers the basic commands: heel, sit, down, come, stand, stay, and finish. Class is eight weeks long, on Tuesday evening at 7:00 p.m. for approximately an hour. Class fee is \$40.

Your dog too young for basic obedience? Join us for puppy socialization. Teach your puppy manners, social behavior, proper handling, and introduction to leash and some basic commands. Talk

about behavioral issues like house-breaking, chewing, and surviving the "terrible twos"! Class is \$15 a month, half hour, once a week.

Kids and their dogs! A class just for the kids and their best buddies. Class will cover simple obedience, grooming, teaching manners, proper handling, tricks, and just having a good fun relationship with their dog. Class size is limited. Class is \$15 a month, half an hour, once a week.

To register or for more information call Shari O'Quinn at 884-9120. Classes start September 10th.

## Skate Night

Parents, it's time for Skate Night to begin, and we are asking this year for parent volunteers to make it a success. Some of the parent volunteer positions will include monitoring children on the skate floor, the snack area and movie room, and will also include light clean up at the end of the evening.

We are also asking for a list of parents with health cards and some first aid experience to volunteer their time in the kitchen. We are

hoping to get enough names so we can rotate volunteers once a month, or every 2 - 3 months. Be a part of our Skate Night, and meet a wonderful group of kids. If you are willing to be a parent volunteer, please call Lila at 884-3278 or the Civic Center at 884-3456. Thank you for your support.

## Karavan Cruise & Tours

884 - 4700

FALL SPACE STILL AVAILABLE!  
"FUN SHIP"  
Cruises to Hawaii or through the Panama Canal!  
Hawaii From \$1,649  
Panama Canal From \$1,849  
(Including Air) Attractive Upgrades Available  
• Depart September 24, 1996 and Sail 11 days from Vancouver to Honolulu  
• Depart November 1, 1996 and Sail 14 days from Los Angeles to San Juan

Carnival Reservations 1-800-327-9501



Business Person -  
Are you wasting your time?  
Call For Details

- Individual & Corporate Tax Returns
- Monthly Bookkeeping Services  
Payrols
- Financial Statements
- Business Consulting
- Notary Public
- Computers & Add Ons Available

Let Our 30 Years Experience  
Work For You

Myr-Mar Accounting  
Service, Inc.

Mary Keizer CTP 884-3566 or 857-5357  
POB 568 Wauna WA 97139  
Office at Union 76 Complex  
Above Country Gardens  
Most CREDIT CARDS Accepted

### Wetzel's Recycling

884-2772

Crushed Cans \$.25 /lb  
Not Crushed Cans \$.15 /lb

Cans with trash or  
aluminum foil up to \$.12/lb

Accepting donations of  
aluminum for Civic Center, Boy  
Scouts, Volunteer Park And other  
non profit organizations  
add .05 to above prices.

We will send out checks for money  
donated to organizations once a month.

#### WANTED:

Major Appliances: Refrigerators,  
electric & gas stoves, washer/  
dryers, dishwashers and hot water  
tanks  
(small charge)



## LAKEBAY WOODWORKS

### JOHN CARLSON BUILDING CONTRACTOR

NEW HOMES & ADDITIONS

PROFESSIONAL BUILDING-DESIGN

TOP QUALITY CONSTRUCTION

884-3149

2925 McEWAN RD KPN LAKEBAY

LICENSED - BONDED - INSURED  
LAKEBW#196JO

<p>Wednesday Night <b>ALL YOU CAN EAT</b> \$5.99 Spaghetti With Meat Sauce Includes: Salad Or Soup</p>	<p>Thursday Night Is Pizza Night \$8.75 Enjoy Our Medium Pizza With Your Choice Of Two Toppings</p>
--	---

Fresh Dough



Friendly Service

## Golden Gondola Pizza & Pasta

Wednesday through Sunday.....12:00 noon - 9:00 p.m.  
Monday & Tuesday.....Closed

12292 Sidney Rd. Located at the Port Orchard Airport Roy & Darlene McCay  
Port Orchard, WA 3.4 miles from Highway 302 & 94th (360) 895-8780  
98366 1-800-760-6952



## COLONY REAL ESTATE

CHALET IN THE WOODS!! 2 bdms., 1 1/2 bath Lindal cedar home, stone fireplace, wooded lot w/126 ft., of waterfront with sandy beach. Price \$189,500.

A LIGHT AND CHEERY kitchen, large decks and cozy living spaces await the buyer of this prize. Bay windows, in ground sprinklers, extensive night lighting, and many extras, make it "extra" special. \$83,500.

WATERFRONT WITHOUT THE TAXES!! Community Beach access from any of these mobiles or homes in Taylor Bay Estates or Longbranch Shores. Full time homes or summer fun. Priced from \$47,500 to \$135,00.

Century 21 Real Estate 884-3304

Located in Key Center

Each office is independently owned and operated



# A View From Home

by Marty Marcus

There seems to be a close relationship between the misuse of language and the proximity to elections. Take the term "welfare reform" for example. Four years ago, we were told that reforming welfare would actually cost more money because we would need to implement more child care, job training, and educational programs to help people get off welfare. That made sense then, because, according to my dictionary, "reform" means to improve, and getting people training and jobs would certainly be an improvement, and as a general rule it usually costs more money to improve something.

I guess that a basic ingredient in any discussion of a major change in government policy or activity is that everyone should be clear on the meaning of the terms used in such a discussion. Consider the case of the guy in Montana who saves three hundred thousand dollars a year by grazing his livestock on government land instead of leasing private grazing land. Is he getting "welfare" from us taxpayers? Or how about the aircraft company that used to buy some special hinges for fighter planes at a cost of \$30.60 each, then decided to make the hinges "in house"? Those hinges now cost the taxpayers \$2270.00 each. And then there's the mining

company that, under the 1872 Mining Act, bought some government land for ten thousand dollars (at \$5.00 an acre). Then they decided not to mine the land, and they sold it to an oil company for twenty MILLION dollars. When a really large winery in California gets millions of taxpayers dollars to advertise its products in other countries, is that a form of "welfare"?

What we are seeing today is a situation in which a person under age 25, working full-time, earns, in inflation-adjusted dollars, 31% less than a person that age was earning just twenty years ago. This causes a longer period of "economic adolescence", which means young people, regardless of their education, cannot earn enough to provide for themselves or to support a family. This leads to the need for more welfare support, more single-parent families, and to more people entering the field of drug dealing. The latter, of course, leads to the need for more prisons. Is this really the direction in which we want our nation to go?

**Don't Forget To Celebrate  
Flavor of Fall on  
October 5th, 1996  
"LA FIESTA"**

# In The Library



**Monkey Chants And Throat Game Songs: A Sonic Adventure Of Global Proportions**, a presentation for the community by ethnomusicologist Brian Pertl, Wednesday, September 11 at 7:00 p.m.

Wherever humans gather, settle, and live, there is sure to be music. Brian Pertl takes the audience on a world-tour of five of the most interesting and diverse music styles in the world: Vedic chants of India, a unique work song tradition from Ghana, monkey chants of Indonesia, harmonic singing of Tuva, and throat game songs of the Canadian Inuit. Along the way, he challenges our traditional notions of the nature of music and dispels commonly held mis-conceptions that have become ingrained in Western society. For each musical stop along the tour, he uses recordings, live demonstrations, and audience participation to explain the music's significance within its cultural context.

This free program is sponsored by the Friends of the Key Center Library, and made possible by a grant from the Washington Commission for the Humanities.

The Friends of the Key Center Library is a community support

organization whose purpose is to encourage improvement of the services and resources of the library, to arrange and publicize programs and to increase awareness of the library among community residents. September will inaugurate the fall season of the Friends' programs. The seasonal schedule of activities, projects and programs will be mailed to members in a newsletter. If you would like to be added to the mailing list and be a Friend of the Library please send in the application below. Membership brochures are also available at the library.

The Friends are currently selling canvas tote book bags. The design is based on one of the stained glass windows at the Key Center Library created by artist Ruth Brockmann. They were made by local resident Gerry Zemojtel. These unusually handsome book bags are available at the library for \$8.00 each.

Preschool storytimes will be held each Friday at 10:30 a.m., September 27 through November 22 for ages 3-5. Registration begins September 1.

Name: \_\_\_\_\_  
 Address: \_\_\_\_\_  
 Telephone: \_\_\_\_\_  
 Enclosed is \$3 yearly dues for membership in the Friends of the Key Center Library, 8905 KP Hwy, Lakebay, WA 98349.

**Advertise  
in Key Peninsula NEWS  
884-4699**

"If you like saving money on car insurance, give me a honk."

Before the cost of insuring your car leaves you a total wreck, give me a beep, a honk, or even a simple phone call. I'll work hard to come up with a quote that's just what you're driving at.

**Allstate**  
Insurance Company

"You're in good hands"



**JIM JUNG**  
851-4567

**DBS INTERIORS**  
 SUZANNE FERGLISON  
 20 Yrs. Decorating Experience  
 • Floor & Window Coverings  
 • Carpet & Vinyl  
 • Duette & Blinds  
 • Silhouette/Vinnette  
 • Custom Decor Items  
 • Bedspreads • Pillows • Valances  
 • Remodels  
**884-5337**  
 Phone Quotes Gladly  
 Serving Entire Kitsap Peninsula

**FREE Shop At Home Decorating Service**  
 Your Local Affordable Interior Designer  
 Featuring MH Direct Carpet / Hunter Douglas WINDOW FASHIONS

**90 DAYS SAME AS CASH**

**Brookside Veterinary Hospital**  
 (4 miles W. of Purdy on Hwy 302)

**The only mixed animal practice left on the peninsula!**

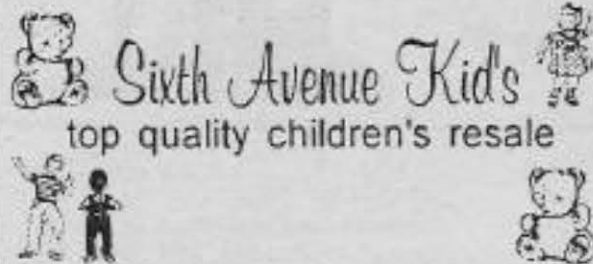
Brookside Veterinary Hospital can meet all your pet/ farm animals needs whether they be horses, goats, cats or dogs and a whole lot more! To help meet these demands **Dr. Christin Finn**, an experienced mixed animal practitioner, with advanced training in equine dentistry has joined the practice.

**HOURS**  
 857-7302 Mon, Tues, Thurs & Fri 8am - 5:30pm  
 Wed & Sat 8am - 12pm

Farm calls available anyday in addition to 24 hr. emergency service for all pets.

Dr. Lisa Woods, DVM





5409 6th Ave Suite #1  
Tacoma, WA 98466  
(206) 566-8808

Jule P. Johnson  
Jane Williams

**Sixth Avenue Kid's**  
top quality children's resale

Ryan Andresen

Domestic & Imports  
**Black Forest Automotive**

15317 Key Peninsula Highway  
Gig Harbor, Washington 98329  
(206) 884-3431

*Hans Massage*

Hans A. Quistorff

PO Box 65

Wauwa, WA 98395

Appointments: (206)-851-4212

Home: (206)-884-1227 L.H.P.#MA00008159



**HOME  
FEED & GROCERY**

MONDAY through FRIDAY 8AM to 10PM  
SATURDAY 9AM to 10PM  
SUNDAY 9AM to 9PM  
ALL HOLIDAYS 10AM to 6PM

Corner of 4th & KPN Lakebay, WA 98349 (206) 884-2521



**HOWLLYWOOD**

DOG & CAT GROOMING

TURN YOUR PET INTO A "STAR"

(206) 851-6062

Purdy-Gig Harbor

☆☆ Boarding Available ☆☆

☆ Certified Master Groomer ☆

Place Your  
Business Card  
Here For  
\$18.65/month

**Almost Home  
Boarding Kennel**

Extra Large Kennels  
Personal Attention  
(Just Dogs)

Hours: 8:00 a.m. - 6:00 p.m.  
Closed Tues. and Wed.  
Sandy - Nancy  
(206) 884-2633  
Lakebay, WA

Place Your  
Business Card  
Here For  
\$18.65/month

Tim's Sprinkler Service

Factory Trained  
Sprinkler Repair & Maintenance  
"Custom Installations"

Tim Putnam  
Proprietor



884-9044  
TIMSSS \*123K7

BULLDOZING  
BACKHOE



GRAVEL AND FILL DIRT  
LOG BULKHEADS

**Johnson Bulldozing Co.**

Lakebay, Washington 98349  
Phone 884-2362

DAVE JOHNSON  
PHONE 884-3330

JOHNSB \* 245DE

PHIL JOHNSON  
PHONE 884-2607

Septic Systems • Underground Utilities • Site Preparation  
Dump Truck Services • Road Building • Land Clearing  
Stump Burning • Hauling • Roadside Brush Cutting

1 John 5:12

**ABBA**

John 3:16

Backhoe & Dozing Service

(206) 851-4067

Mike A. Ross 10523 132nd Ave KPN  
Licensed and Bonded Gig Harbor, WA 98329  
Pierce, Kitsap, and Mason Counties

Place Your  
Business Card  
Here For  
\$18.65/month

**L. E.  
Jopp  
Builders**

Carpenter Work  
Foundations  
Bulkheads  
Concrete Work  
etc.

**884-3841**

Licensed & Bonded

Call Collect



Snodgrass Freeman Associates AIA

7700 Pioneer Way, Suite 200  
Gig Harbor, WA 98335  
Phone: (206) 851-8383  
Fax: (206) 851-8395

David J. Freeman, AIA

Architecture Planning Consulting

Place Your  
Business Card  
Here For  
\$18.65/month

**Longbranch  
Community  
Church**



Worship 10:00 a.m.  
Sunday School 10:00 a.m.  
Longbranch, WA  
Pastor: Robert W. Olmsted, D. Min.

(206) 884-2961  
(206) 851-2690



**Harbor Furnace  
SERVICE & INSTALLATION**

TOM WILLIAMS

P.O. BOX 308, Lakebay, WA 98349  
P.O. BOX 3, GIG HARBOR, WA 98329

**COUNTRY LINE  
DANCING LESSONS**

For information on future  
dates & times call  
Mr. Jack at 857-2583  
If the response is good  
lessons will be scheduled A.S.A.P....



# CLASSIFIED ADS

**SAVE Thrift Store.** Located below PHS in Purdy. Great buys in clothing, hardware, kitchenware. Open Mon., Tues., Thurs., Fri. and Sat from 10-4. Proceeds benefit PHS scholarship fund. Surprise sales throughout the store during the month. **Phone 857-2800.**

**WATKINS PRODUCTS** are available, call Marv and Myrtle Keizur at **884-3566, VISA/MC.**

**DEADLINE for KP News classified ads is the 20th of each month. Call 884-4699 to place your ad.**

**BUSY BODY CLEANERS**  
One Time Clean  
**884-9059 or 884-9259.**

**ANGEL GUILD THRIFT STORE,** K.C. Corral, 10 a.m. to 4 p.m. Wed. through Fri. hrs - 11 a.m. to 4 p.m. Saturday 11 a.m. to 3 p.m. In store specials weekly. All proceeds benefit the Key Peninsula. **884-9333.**

**KEY PENINSULA BAPTIST CHURCH.** Meeting Sunday Mornings at Key Peninsula Civic Center in Vaughn. Bible Study 9:45 am. Worship Service 11:00 am. Wednesday Prayer & Bible Study 7pm. Children's Church also.  
Pastor James Rouse  
Phone **884-9994**

**CAR IN TROUBLE?** Give us the test. Less expensive, yet the best. Japanese car specialist. Northwest Auto Clinic. **857-5999.**

**INNER SOUND METAPHYSICAL BOOK STORE,** 3110 Harborview Dr., Gig Harbor. **(206) 851-8567.** Open 7 Days!! New ideas and ancient wisdom.

**SAVE 30 - 50% on your long distance calls.** Find out how, call **(206) 884-9193.**

**HOUSE FOR RENT**  
New energy efficient one bed room small house in the woods \$500/mo. 1st., last & deposit no pets-no smokers **884-9448**

**REAL ESTATE AGENTS!!**  
Join the century 21 Team at Key Center. Work in your own neighborhood and enjoy the benefit of association with the world's most recognized real estate company. We have room now in our new office.  
Call Joyce at 884-3304.

**HOUSE CLEANING**  
One time Clean or Regular Basis Key Peninsula area  
Call Bambi 884-4721

**Childcare** in Home. Anytime, Evergreen School  
Call Laura 884-5432

**Special offer on Primestar digital satellite TV system: \$99 for install and first month. Includes install, full system with remote, 24 hour customer service, and monthly guide. Call for details.**  
**(800) 545-9612**

**DIET** Lose up to 30 lbs., 30 day programs start at \$30. \*MAGIC\* Free Re-order Program. **(206) 272-1152.**

**Chateau Panache.** Private Senior Care, park like setting, excellent food, 24 Hr. Care. Aide on duty. Call Mary, **(206) 884-5830.**

**Need more room?** Mobile has large rooms, 30x50 barn over 5 acres. Call Nancy **884-2065.** Properties N.W.

**CHAINSAW AND LAWNMOWER REPAIR.** Over 20 years experience. Reasonable labor rates, pick up and delivery available. **Call 851-4628.**

**DEPENDABLE,** quick, trustworthy housecleaning. \$10 per hr. Call Carolyn, **884-4382.**

**GAMBLING EQUIPMENT** To rent for Reno Night Fund-raisers. Blackjack tables, Chuck-a-Luck cages, dice table, money wheel, stools, etc. Call the Civic Center at **884-3456** for more information

**Used Oil Collection Tank at Riley's in Key Center**  
**Advertise**  
In Key Peninsula NEWS  
**884-4699**

## Legal Notice

**PIERCE COUNTY  
NOTICE OF DETERMINATION OF  
NONSIGNIFICANCE  
Building Permit  
Colleen R. Angle  
Applicant**

Notice is hereby provided in accordance with Pierce County Code 17.08.160 and WAC 197-11-510 that Pierce County has issued a Determination of Nonsignificance on the following proposal:

Construction of a 760 sq. ft. detached carport and the replacement of a 562 sq. ft. porch on a 17-acre single-family residential parcel containing a wetland in a Rural Ten (R10) zone and the Filucy Bay Environmental Sensitive Area at 2918 158th Avenue KPS, in the SW 1/4 of Sec. 12, T20N, R1W, W.M.

Pierce County has determined that this proposal will not have probable significant adverse impacts on the environment. Pursuant to RCW 43.21C.030 (2) (C), an Environmental Impact Statement (EIS) is not required for this proposal. This decision was made after review of a completed environmental checklist and other information of file with Pierce County. This information is available to the public on request.

An appeal of this determination must be filed no later than:  
September 1, 1996  
(15 days from date of publication)  
at the Development Center, Planning and Land Services, Public Services Building, 2401 S. 35th St., Tacoma, WA 98409 by filing the appropriate appeal form and a \$350.00 filing fee. The appeal should state specific factual objections to the determination. Contact the Development Center, 591-7200, for information of the procedure for appeals.

**DEADLINE for KP News classified ads is the 20th of each month.**

Support your local businesses. Their advertising dollars help make this free newspaper

## Key Peninsula Civic Center Indoor Park



Is it raining and cold and your house seems to be shrinking?



Do your children need to get out, run, and play?

Introducing KPCC Indoor Park!!!



Where: Key Peninsula Civic Center Gym. (Filled with Little Tikes Toys)

When: Most Tuesdays and Thursdays.



Age: Limited to children ages 9 months to 5 years



Drop-in cost is \$1.00 per visit for the first child and \$1.00 for each additional child. Limit 3 children per adult. Passes may be purchased at the Civic Center in advance or the day of.

Parents need to supervise their children at all times

**NO DROP OFFS**



Questions call the Civic Center at 884-3456 or Shari OQuinn at 884-9620.

Mark your calendar and join the fun!



## Labor Day Weekend Dance

Saturday August 31, 1996

9:00 PM - 1:00 AM

Music By "Oasis"



Longbranch Improvement Club

No Host Bar - Food Available

Donations \$11.00 per person



**Did You Know?****How Key Center Happened**

An "I" witness story by Ed Olsen  
Part One

In the mid-twenties, my father Elmer Olson, and Aldie (Kingfish) Visell were logging partners. They were also neighboring farmers. We lived north of the crossroads, later named Key Center. Aldie and his in-laws, the Lonnings, lived south.

Dad and Aldie each had a draft horse, which they worked together as a team, "Duke and Major." One day Aldie's horse fell into the well and had to be destroyed. He was buried right in the well with dirt they removed while digging a new well right along side. This broke up the logging enterprise so they pondered what to do next.

In 1925, the Farm-To-Market Administration determined to pave a mile of road leading north from the crossroads. This new road is what formed the crossroads. At this time there was only an AAA directional post, dutifully toppled every Halloween.

The Lonnings owned the last store at Glencove dock, a mile east. It occurred to Aldie to build a store at the crossroads. Lil, his wife, had kept the safe from the old store. At

the same time Dad put in an Auto Camp (Who ever heard of a motel back then?)

Aldie pursued the enterprise more aggressively. He got Bill Radke to take over the grocery while the Visells concentrated on hardware and lumber. A Lonning relative, Iver James, put in a gas station, which later became the tavern. Dad still had a horse left, and with a growing family, gave most of his attention to the farm, which he registered as Sunnycrest Farm, Hatchery, Dairy and Berries. He did put up a berry shed and milk pick-up station at the crossroads as time passed. As a teen-age carpenter, I helped on this, so one could say that Ed Olson was one of the builders of Key Center! The second gas station was also built on Olson property by lease to Ed Gabrielson.

There was a great day of celebration and promotion once in the mid-thirties. By then, C.D. Hipp had taken over the grocery and Gene Brown the James Service Station. Mr. Stone, grandfather of my classmate, George Stone had won the contest to name the Peninsula the "Key Peninsula." The name "Key Center" was proposed by a

Mr. Peck and the name was officially proclaimed. Aldie was given the title, "Kingfish". My mother Elsie, by a week of balloting at the store, was proclaimed "Mayor of Key Center". I personally have not lived there since I left for the University of Washington in 1941, though I own the homestead house where my son now lives. I will therefore not presume to tell the later history except for some of the family participation.

When my brother-in-law, Harry Anker, came back from the war, one end of the berry shed was converted to a cafe, but soon my aunt, Kathleen O'Hara, took it over. Harry and my sister Phyllis, took over the old Lonning house from the interim owner, C.D. Hipp. There was a fire, repairs were made and now it is commercial property. Phyllis has the RV Park (Auto Camp). Niece Claudia and husband Dale have the Sunnycrest Nursery. In fact, nine of the nearby homes are those of Andrew Olson's descendants. Sister Joyce and husband Chuck Nieman have Sunnycrest Farm itself.

It was hard, smelly work as a

farm boy. There perhaps, was the greatest spur to get away and become a physician. Later I found that this move did not necessarily relieve me of hard, smelly work.

Bertha Lonning Mills was the postmaster at Vaughn for a year, and there is the Lonning Saw Shop four miles away at Minter. I am not aware that any of that clan now having any interest financially in Key Center itself, though Don Visell still lives at Vaughn as does Bertha's son and family, Don Mills. Dad, Aldie and Lil have been gone for some years but Elsie, my mother, still lives at Vaughn Bay. At age 92, no one since has been elected mayor of Key Center!

**Thank You!**

I would like to take the time to thank all the gals of the Ashes who helped serve at the Fireman's Ball, Saturday, August 10, 1996, sorry I couldn't be there because of illness.

Thanks Again,  
Darlene Brown, President

**TRANSPORTATION PUBLIC WORKSHOPS**

The Washington State Department of Transportation (WSDOT) has begun a Major Investment Study (MIS) on the State Route 16 (SR16)/Tacoma Narrows Corridor.

The MIS is the first step to identify solutions to transportation problems on the corridor. This is your opportunity to be a part of the solution. Come find out how you can be involved.

A series of public meetings are scheduled to introduce the team working on the project and provide opportunities for public input. Work in progress and the full range of public involvement opportunities will be available for review.

The meetings are scheduled as follows:

**TACOMA AREA**

Wednesday, September 4  
6 p.m. - 9 p.m.  
The News Tribune  
Baker Conference Room  
1950 South State Street

**GIG HARBOR AREA**

Thursday, September 5  
6 p.m. - 9 p.m.  
Chapel Hill Presbyterian  
Church Gym  
4814 Rosedale Street NW

**VASHON AREA**

Monday, September 9  
6 p.m. - 9 p.m.  
Vashon Island High School  
Commons Area  
20120 Vashon Highway SW

**PORT ORCHARD AREA**

Tuesday, September 10  
6 p.m. - 9 p.m.  
Cedar Heights Jr., High  
Commons Area  
2220 Pottery Avenue

**BURIEN AREA**

Wednesday, September 11  
6 p.m. - 9 p.m.  
Highline Community College  
Bldg 7 Artists - Lecture Center  
South 240th & Pacific Hwy South

For more information about the public meetings, please contact the project office at:

**1 (888) SOLVE 16 (1-888-7654-8316).**

If you need this information in an alternative format, please call TDD (360) 705-6980.



Washington State  
Department of Transportation