

This plan is a general arrangement of equipment and fixtures for the convenience of contractors. All measurements are to be verified on the field. Plumbing, electrical, and vent outlets have been located as accurately as possible and are intended to suit equipment to be supplied. We accept no responsibility for work done by said contractors, and will not be liable for any expense made necessary by local building codes, ordinances, structural conditions or by the substitution or changes in equipment shown on the plan or for any reason. Contractors are to make allowances for all plumbing, valves, magnetic contractors and disconnects, starting switches, etc., except where noted in specifications. This plan is the property of Bargreen Ellingson and is loaned subject to the condition that it is not to be copied, reproduced or distributed either in whole or in part, without written permission, and is not to be used in any way detrimental to the best interests of the company.

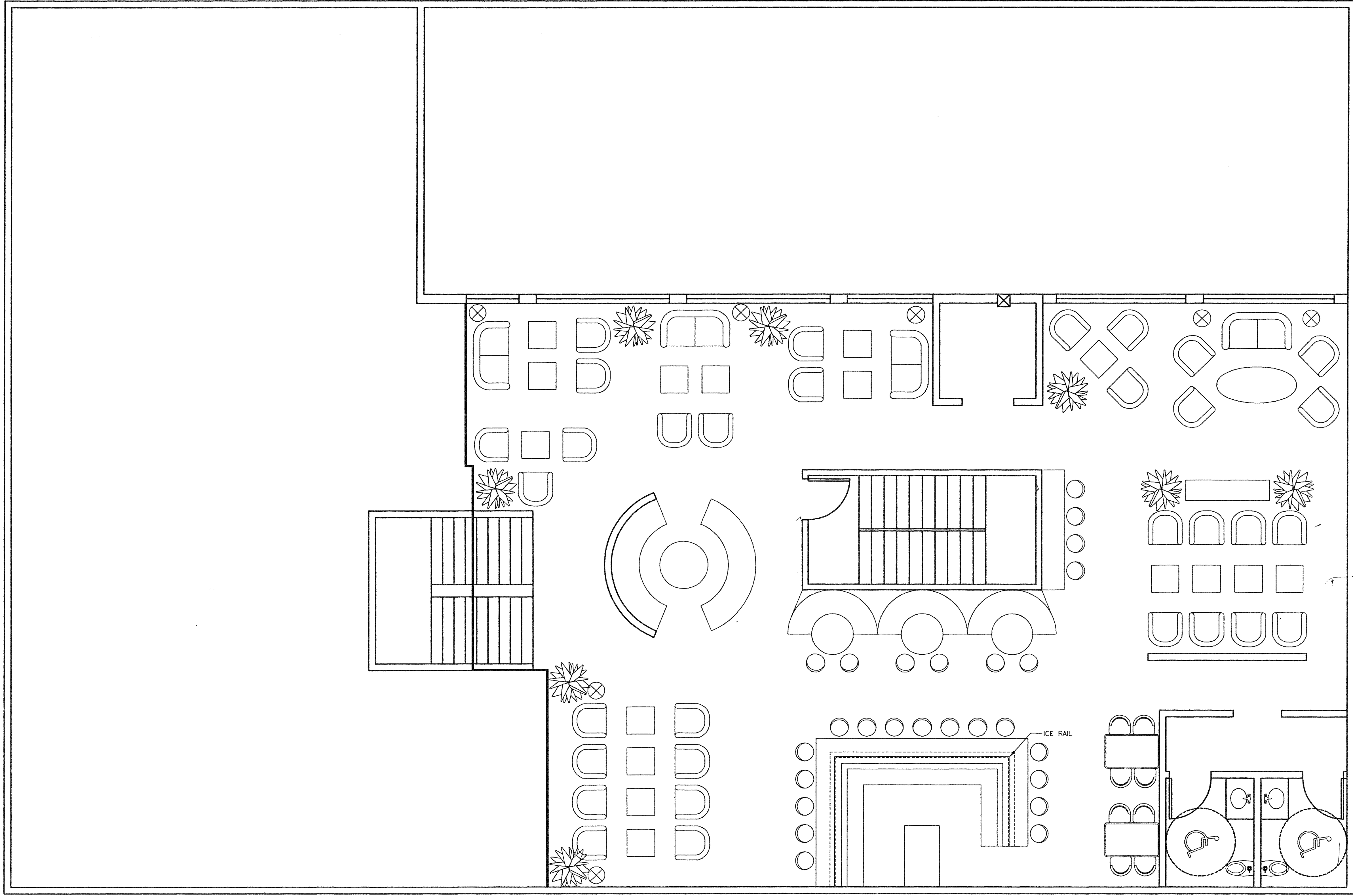
BARGREEN ELLINGSON
 FOODS (RECT) SUPPLY & DESIGN
 Phone: (253) 775-9281
 Fax: (253) 775-2875
 925 SACOMA AVE. BLVD
 TACOMA, WA 98403
 Email: k.eichler@bargreen.com
 k.eichler@bargreen.com

MECA THEATER
 TACOMA, WA

Release Information
 Drawn By: **K. EICHLER**
 Date: **1/16/07**

SHEET NUMBER
K1
 Design Project Number
2596

1ST FLOOR PLAN
 Scale: 1/4" = 1'-0"



MEZZANINE FLOOR PLAN

Scale: 1/4" = 1'-0"

Release Information
 Drawn By: **K. EICHLER**
 Date: **1/16/07**
 [1]
 [2]
 [3]
 [4]
 [5]
 [6]
 [7]

SHEET NUMBER

K2
 Design Project Number

2596

MECA THEATER
 TACOMA, WA

BARGREEN ELLINGSON
 FOODSERVICE DESIGN

6626 TACOMA MALL BLVD
 TACOMA, WA 98409
 Phone: (253) 475-9203
 Fax: (253) 475-1875

Email
 k.eichler@bargreen.com

This plan is a general arrangement of equipment and fixtures for the convenience of contractors. All measurements are to be verified on the job site. Plumbing, electrical, and vent outlets have been located as accurately as possible and are intended to suit equipment to be installed. We accept no responsibility for work done by said contractors, and will not be liable for any expense made necessary by local building codes, ordinances, structural conditions or by the substitution or changes in equipment shown on the plan or for any reason. Contractors are to make allowances for all plumbing trim, valves, magnetic contactors and disconnects, starting switches, etc., except where noted in specifications. This plan to be verified and approved before detail and rough-in plans can be made. The price of engineering and design is not to be copied, reproduced, or distributed either in whole or in part, without written permission, and it not to be used in any way detrimental to the best interests of the company.