

BOX HOLDER



Key Peninsula

NEWSLETTER

Non-Profit Org.
U.S. POSTAGE
PAID
PERMIT NO. 2
VAUGHN, WA. 98394

Circulation 4100

NEIGHBORHOOD NEWS FROM WAUNA TO LONGBRANCH November, 1981 Volume VIII Issue 11

LOCAL MUSICIAN GOES TO NASHVILLE, TENN.

Peninsula resident and musician Randy Viers returned October 17 from Nashville, Tennessee after competing in the Semi-finals of the 1981 National Battle of the Bands.

Randy is a member of "Country Justice" who won the Washington State Competition and was voted the number one Country Group in Washington.

The competition was sponsored by the Seagram Distillers CO. of New York, and included bands from the U.S., Canada, and Australia. Out of 1,500 bands competing, 36 bands were chosen for the semi-finals held in Nashville during the week of Oct. 12-17. Country Justice was eliminated from the finals on October 17, and seven bands, all from the United States were chosen for the finals.

"I really wasn't disappointed when we were eliminated," said Randy, "because there were so many excellent bands and talented musicians. I saw some of the best bands that I have ever seen. Just having the opportunity to compete and represent the State of Washington was a great honor."

Country Justice did sign publishing and recording contracts with Shelby Singleton, president and owner of Sun Records in Nashville, and recorded a new single during their stay in Nashville. Their new single will be released in November.

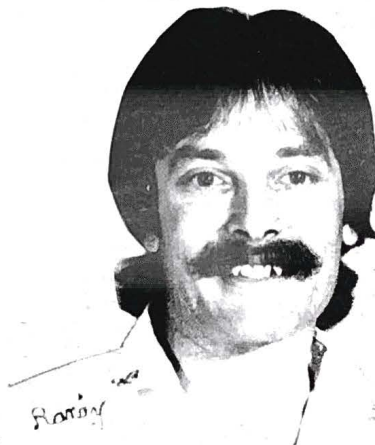
CHRISTMAS ARTS AND CRAFTS FAIR

The Christmas Arts and Crafts Fair will be held on Saturday, December 5 from 10:00 a.m. to 4:00pm. at the Key Peninsula Civic Center.

Tables will cost \$10.00 on a first come-first serve basis as the fees are received by the chairman. The fee must be paid in advance in order to have a table reserved. Make the check out to KPCC and mail it to: Kay Pinter, Rt.1 Box 191A, Vaughn, WA 98394.

The Key Peninsula Lutheran Church will be serving hamburgers and pie as well as other goodies, and a raffle is also in the planning.

If you have any questions or if you would like to volunteer some time to help, call either Kay at 84-3466, Jane at 884-3738 or Betty at 884-2598.



Randy Viers, member of the Country Justice Band, the winners of the state-wide country band competition.



Happy Thanksgiving

IT COSTS WHAT?

Recently six State Senators of the Park & Ecology Committee toured the Key Peninsula Park and Recreation District facilities at the Civic Center and the Sports Park.

Senator Sam Guess, Presidente Pro Tempore of the Senate, sent the following correspondence to members of the Park Board:

"Dear Walt (Smith),

We appreciated being your guests, the wonderful home cooked dinner and the large turn out for our public meeting. I know of no community in all my travels that has shown the spirit that yours has and it makes me proud to know that my fellow Washingtonians have done such an outstanding job.

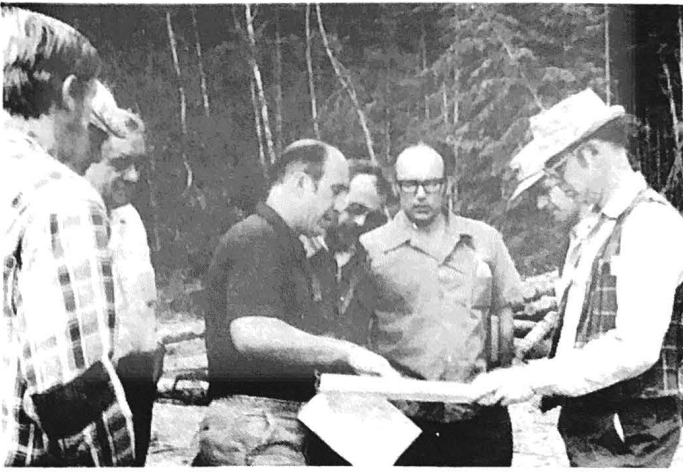
The Committee looks forward to working with you in the future. We wish you continued success. Sincerely, Sam Guess."

These facilities did not emerge as outstanding, important and significant recreational and leisure time areas, they were created, sustained and improved over 25 years by hundreds of volunteers and contributors of money, time and materials.

Key Peninsula Park & Rec. Dist. (Including the Sports Center) 1981 - Budget	
Professional Services...	\$ 500.00
Maintenance & Operation	
Supplies.....	1900.00
Printing & Mailing.....	700.00
Insurance.....	1000.00
Maintenance, employees & Repairs.....	11150.00
Equipment rental fees...	250.00
Reserve Fund.....	2000.00
TOTAL	\$20,000.00

Key Peninsula Civic Center 1981 - Budget	
Bond Redemption-(Loan balance \$12,000)...	\$5700.00
Fuel Oil.....	8000.00
Employees salaries...	3600.00
KPCC Insurance.....	3800.00
Utilities.....	3000.00
Workmen's Comp.....	1000.00
Skating Insurance....	900.00
Maintenance, operation Repairs & Supplies..	7000.00
TOTAL	\$33,400.00

It only takes a minute to examine the budgets above to see where your M & O levy money from 1979 has been spent! You will note that ALL of the monies budgeted are for Maintenance and Operation! We are operating our Park District on an estimated cost of 35¢ per \$1,000 assessed valuation. The other park and recreation districts average 70¢ per \$1,000 assessed value. Where can you find a better value?



Planners map out fields for Sports Center

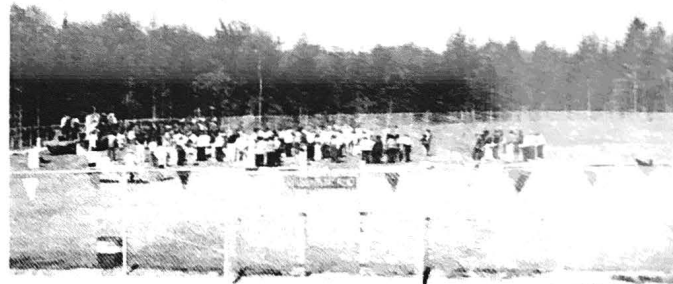
**Look
what
You've
done!**



Volunteers take a break to examine their progress at the park.



Retired people relax playing horseshoes.



Dedication day was a really BIG SHOW at the Sports Park.

When the Key Peninsula Park & Recreation District Commissioners decided to ask the taxpayers to approve a Maintenance and Operation Levy in an amount of \$89,000, it was with the express understanding that this money would barely keep the Civic Center and Sports Park functional for 1982 and 1983, even though the levy is for one year only!

With the help of more than 300 volunteers, the Sports Center now has a full time management group in the newly organized and officially recognized by the State as a non-profit organization in the form of the Key Peninsula Athletic Association.

This new volunteer group emerged from the old REC Committee and has a board of 15 members, who plan, schedule and operate this facility under the direction of the Park Bd.

It has the privilege of setting fees for the use of the fields, to raise additional revenues by fund raising activities and to plan for future development of the Park. Anyone interested in joining this group may attend their monthly meetings which are held on the last Monday of each month at the Civic Center.

Our Key Peninsula Park & Recreation District now boasts two (2) of the finest recreational and leisure time facilities in the entire State.

Our total assessed value is approximately \$195,000,000! Each year, more than 300 elderly, low income, disabled and handicapped persons are exempted by the Pierce County Assessor's Office from paying any excess taxes. These exemptions total more than \$3,000,000!

It is important to remember that those people who are exempt from paying taxes will not be paying any M & O Levy taxes! Therefore, the passage of this levy will in no way affect the taxes of the elderly, low income, disabled or handicapped persons.

Our Civic Center and Sports Park play an important part in the lives of over 50% of the residents in our Key Peninsula area. The Civic Center has been home for the Upper Sound Grange, Cootiettes, VFW Post - Auxiliary, Vaughn Duplicate Bridge Club, Skirts 'N Flirts Square Dancers, Senior Society, Bay Artisans, Lutheran Church, 4-H Club and numerous Cub Scout, Boy Scouts and Brownie groups.

Tradition and pride have played an overwhelmingly and significant part in the development of the Key Peninsula.

Many residents have been overheard saying, "I never use any of these facilities, why should I pay taxes to keep them going, let them close, it won't hurt me."

This comment indicates a lack of understanding of what your property taxes really support. How Many of you readers have been to the Port of Tacoma, to the Tacoma Zoo, to any school in our district lately. Have you called the fire department or for a sheriff or taken out a book from the library?

There are numerous services provided for the benefit and welfare of ALL citizens. Whether we use them daily, monthly, yearly or NEVER, we know that they are there! They are for EVERYONE! Whether you use any service or any facility, these recreational and leisure time facilities make our community more livable, more enjoyable and more worthwhile to ALL residents.

We are now faced with a critical issue—do we want to provide these recreational and leisure time facilities for the majority of the residents in our community or are we willing to let them die!

Tuesday, November 3 is the day to make your momentous decision! We need "772 Votes" or we go "BUST".

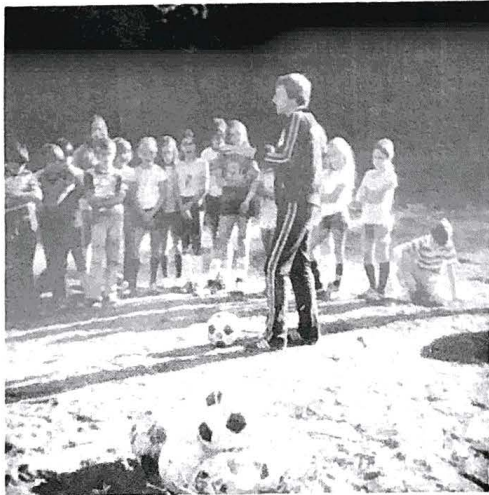
**Our Pride
is Showing!**



Another well known volunteer helps level the fields at the Sports Center.



Pioneer Days gave the kids a wagon-pony ride.



Soccer workshop helps sharpen the players

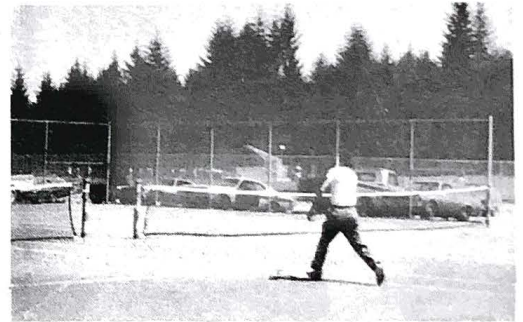


Pioneer Day winners for best dressed!

**For
Smashing
good
sports
and
leisure
events
Vote
Yes~Nov. 3**



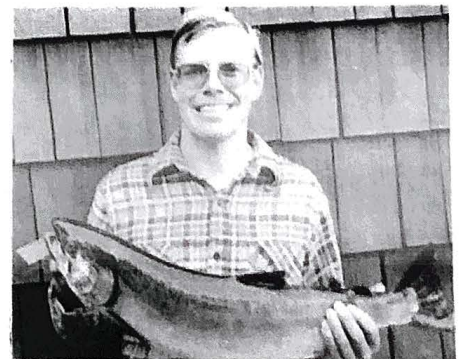
Splitting shakes can be a highly skilled operation.



Learning to play tennis can be FUN!



Senior Society members eat and socialize at the Civic Center.



Who says there are no BIG fish to catch!



P.O. BOX 82 VAUGHN, WA. 98394

PUBLISHER

Key Peninsula Civic Center
Caretakers - Dale and Claudia Loy
Phone-884-3456

CO-EDITORS

Jeannie Sagle
Pat Greetham

CLASSIFIED ADS & SUBSCRIPTIONS

Thelma & Harry Klein

DISPLAY ADS & LAYOUT

Bob Schottland
Marlyce Viers

COPY LAYOUT

Dolores Ramsdell

TYPISTS

Kay Beck
Pat Hunter
Judy Jaggi

BILLING

Jean Humphreys

CIRCULATION

Lucy & Carl Breitsprecher

FEATURE WRITERS

Cecil Paul
Ruth Little
Valda Young



YOUR PREZ SEZ:

What a busy time for all of us! We are so happy that so many of you help in various activities. If each person in the Peninsula would help with just one activity during the year, it would be so easy to run an organization like ours. Keep this in mind when you are using the Center, or your children are here for the Halloween Party, skating or scout meetings. If you are not helping, you are shirk-some of your responsibilities!

The Board decided to publish the minutes of their meetings in the NEWSLETTER and we would like to know how you like this idea. Be sure to remember that all meetings of the Board and the Executive Committee are open and we welcome your participation. At our November meeting we would especially welcome your input as we will be electing new Board members and approving a budget. In this regard also, the organizations which use the Center should be getting their representatives for next year's board also -- do that now!

We want to thank the Twilight Dance Club for furnishing the Christmas tree that we will use at the Center this year. It will be there for any organization to use.

As a safety reminder: I have met so many cars lately with only one headlight and it is most disconcerting on our dark roads. Please check yours so that you will be able to see better and so that others can see you.

----Marion Wagner

The Key Peninsula Newsletter is published monthly by the Key Peninsula Civic Center as a community service and Board project. It is staffed by volunteers and solicits news of general interest to the community.

ADVERTISING RATES

Single business card, 2x3.....	\$ 6.00
Double business card, 3x4.....	12.00
Triple business card, 3x6.....	18.00
1/4 Page, 6 1/2 x 4 1/2.....	22.00
1/2 Page, 6 1/2 x 9 3/4.....	40.00
3/4 Page, 9 3/4 x 10 1/2.....	55.00
Full Page, 9 3/4 x 13 1/2.....	75.00

Stand Up and Be Counted

*It's time to be counted, so it has been said
Before this profession of ours is near dead.
For a plague is ruining this country of ours
A plague that will leave this country its scars.*

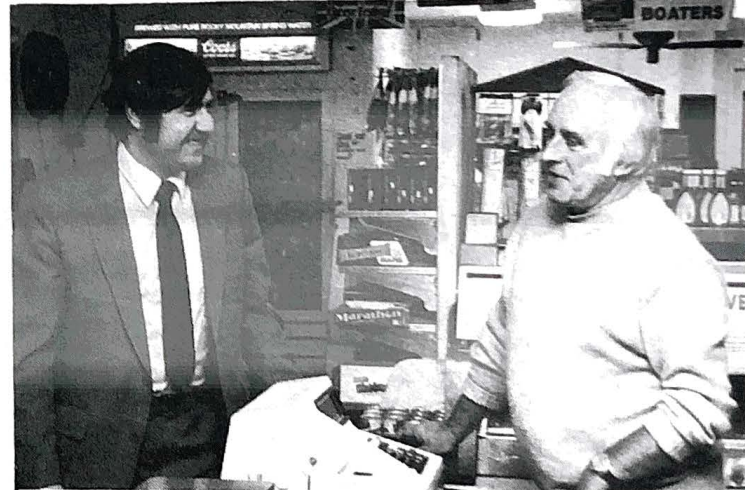
*This plague has affected the minds of some men
It may force us all to start over again.
For some now infected see only short range
And to look to the future for them is so strange,
And values are judged on a dollar return.*

*Oh, God, how I wonder if we'll ever learn
That the value of parks, recreation and such
Are measured in value by the lives that they touch.
The return is not measured by a mere fiscal year;
The return is the health of ones we hold dear.*

*Recreation can cause a community to unite;
Parks can add beauty and stamp out the blight;
And a man is much stronger of limb and of mind;
A man is more human, more tender and kind.*

*So let' us stand up and tell our proud story
That recreation, as known, can lead lead man to glory.
That recreation and parks will lead man from the strife
And man can find pleasre and joy in this life.
And all shall be better because it is there--
Because we do serve, we do love, we do care.*

By Robert L. Wilder, Director
Interagency Committee for
Outdoor Recreation
State of Washington



Vince Tilotta visits with Bob Wartenbe, Longbranch Mercantile owner.

**"Your business, large or small,
is our business,"**

affirms Vince Tilotta, Purdy Branch manager.

Today's rapidly changing business economy requires close customer contacts to keep businesses up-to-date with regulations and practices . . . local, state and national.

A growing number of Peninsula Country people have learned Vince and his staff make the banking difference with sound personal and business advice and consultation. It is a typical service of the Puget Sound National Bank.

Convenient banking hours:
Monday-Thursday, 10 a.m. to 5 p.m.
Friday, 10 a.m. to 5:30 p.m.
Saturday, 10 a.m. to Noon.



**Puget Sound
National Bank**

Purdy Branch

Member FDIC

PENN-ANTS #609 COOTIETTE CLUB

The Grand Cootiette convention held in Ellensburg Oct 3rd and 4th was a fun affair. Awards were given for hospital, community service and membership. The Penn-Ants were enjoying putting on a skit. Daisy Mae Harfst and Alice Palmer won 1st prize. Nat Knox, Judy Wilson, Coretta Van Antwerp, Marie Schwenka and Ruth Nelson also won prizes.

Nat Knox made the year book for Cora Lee Harriman and was awarded 1st prize.

Our October 15th Halloween party was a huge success. The tables were decorated with green table cloths and autumn leaves and pumpkins. Pot luck was like a banquet, turkey, roast beef, and many pies and hot dishes. Members from Sly Fox #655, Port Orchard and Olalla visited, some in costume. Those wearing masks really had others guessing as to their identity. Smokey the Bear won 1st prize.

The Grand Grayback Regina Paget made her official visit. She lives in Federal Way. She was accompanied by her husband.

Our November calendar is as follows: On the 12th, visits to Cottage Convalescent Home, and Rocky Bay Health Care Facility. At our regular meeting on the 19th, we will initiate three new members and make our plans for Christmas for the needy and gifts for the patients, canteen books for American Lake Veterans. On the 24th, we will visit the Bremer-ton Naval Hospital.

Thelma Cadle
W5 Chairperson.

(Editors Note: Please accept our apologies here at the Newsletter for not getting Octobers Cootiette Club news in.)

SPORTSMAN'S CLUB CALENDAR OF EVENTS

The following is the Key Peninsula Sportsman's Club Calendar of coming events for the month of November.

- Nov. 7 - Card Party 7:30 p.m.
- Nov. 12 -Dinner and Meeting 6:30 p.m.
- Nov. 15 -Social Sunday 1:00 p.m.
- Nov. 20 -Pot luck dinner and game nite 6:30 p.m.

BIG ART FAIR PLANNED BY G.H.HIGH

Gig Harbor High School students are sponsoring a super art fair on November 21 at Gig Harbor High school. Along with a high quality fine arts section, including sculpting, painting, weaving, tapestry, and wood carving, there will also be a superb crafts presentation. Such hand-made items as games, quilts, children's gifts and Christmas gifts of all kinds will be there for the viewing and buying by the public. In fact, all items in both the fine arts and the crafts division will be for sale.

Special music will also be a feature item at the art fair. Ensembles from the Tacoma Youth Symphony and Gig Harbor High School, plus singing groups from the school, will entertain folks as they peruse the arts and crafts. They can also eat to their hearts content such wonderful items as quiche, sweet and sour chicken wings, and as an hor d' oeuvres, (free), hot clams. The food will be for sale in an international food booth.

As an added attraction and special help to parents, the Gig Harbor High School cheerleaders are offering babysitting services at 75¢ per hour. They have games and lots of fun planned for the children.

The hours of the art fair are 10:00 a.m. to 7:00 p.m. on November 21 at Gig Harbor High School on Rose-dale Av. in Gig Harbor. For 50¢ you can come see and hear what area artists are doing and musicians are playing. Everyone is welcome.

*** NEW ***

*** LOTUS**

Cedar Scented Laundry Soap
(Completely Biodegradable)

*** VEGETABLE BEEF JERKY**

(No Chemicals - Nothing Artificial)

*** EL MOLINA DRESSINGS**

(2 Calories per serving- Oil Free)
(No Cholesterol - No Preservatives)
Onion Chive - Herb - Italian-French

**Teddy's
Country Health Foods**

IN KC CORRAL 884-3977

**KEY CENTER
HOBBY HUT**

884-4187
Located In
KC Corral

Hours: 10 to 5
Mon. - Sat.

Come in and
browse thru the
beautiful NEW

**NOW
OPEN
MONDAYS**

Pengouin Yarns

Large range of colors, 100% Acrylic

Be creative and design your own
Sweater or Afghan.

Patterns and Knitting Supplies Available.

Locally Handcrafted
Gift Items.

HAIR STYLING FOR

- *MEN
- *WOMEN
- *CHILDREN

NOVEMBER SPECIAL - FREE HAIRCUT WITH ANY
COLOR OR BRING A FRIEND! 1ST PRECISION
HAIRCUT \$8.00 - 2ND ONE 1/2 PRICE!

10% DISCOUNT
TO SENIOR
CITIZENS

**Sylvia's
'Staches
'N
Lashes**

Beauty Shop

EYEBROW ARCH \$5.00
MANICURES \$7.00

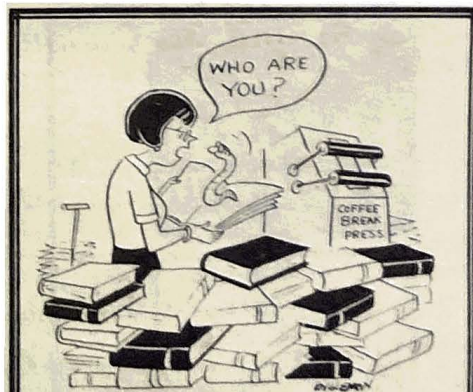
CINDI'S BACK!!

- *DONNA - MON. AND SAT.
- *SANDIE - WED. THURS. FRI.
- *SYLVIA - TUES. THURS. FRI. SAT.

REDKIN MAKEUP
APPLE-PECTIN SHAMPOO

K-C CORRAL KEY CENTER

CALL 884-2479



Name the Coffee Break Bookworm
Prizes and Surprises
Deadline - Dec. 10, 1981

Send entries to:
Coffee Break Bookworm
Box 103, Burley, WA 98322

**personalized
Christmas Letters**

- 1 to 5 copies 15¢ each
- 6 to 25 copies 10¢ each
- 26 to 100 copies 5¢ each

Red bordered paper or
colored stock available

COFFEE BREAK PRESS
1440 SW Spruce Rd
857-4329

PENINSULA BAY ARTISANS

Peninsula Bay Artisan's "Peninsula Country" Arts and Crafts Show will be held Nov. 14&15 at the Key Peninsula Civic Center in Vaughn. Hours for the show are Saturday 10-5. Sunday 12-5. This year's show will be full of fun and excitement. The first annual art competition for the area will be on display. An awards presentation ceremony will be held at 2 p.m. on Saturday Nov. 14. Grade school first place winner will receive art supplies, high school winners will receive a cash award.

Due to limited hanging space, grade school entries have been hung on a rotational basis at the Key Center Library. Winners of the grade school competitions will be hung in the gym at the Key Peninsula Civic Center during the art show. Adult and High school entries will be hung in the gold room.

There will also be entertainment as many of the area's artists and craftspersons will be demonstrating their art. Dana Neis of Lakebay will be doing puppet skits, showing her remarkable puppets and her talent at puppetry. Acrylic painting on wood, handmolding clay, oil painting, and copper enameling will also be demonstrated.

The show will also be a good place to pick up original handmade Christmas gifts. Macrame, weavings, stained glass, handpainted china, rock animals, stuffed animals, dolls and quilts will be offered for sale. Original prints of old cars, boats, and planes by George Madsen will be displayed.

The Senior Citizen group will be running the concessions. They will have a variety of refreshments and goodies for everyone.

"We will have something for everyone," says Kathy Best, chairman for the show, "We are very pleased with the entries for the art competitions, we have a lot of talent in the area"

Winners in the grade school competition are:

Kindergarten & First grade:

- 1st. Benjamin Diedrich - Vaughn
- 2nd. Michelle Kent - Evergreen
- 3rd. Tommy Ryker - Vaughn

Honorable Mentions: Jennifer Reynolds, Jason Burke, and David Smart all of Vaughn.

Second and Third Grades:

- 1st. Brian Ripley - Evergreen
- 2nd. Lesley Heathershaw Vaughn
- 3rd. Sona Morales - Vaughn

Honorable Mention: Justin Hunt, Vaughn
Danny Hartjoy, Evergreen, Sherri Reyes, Vaughn.

Fourth & Fifth Grades;

- 1st. Elayne Best - Vaughn
- 2nd. Tonnia Marcum - Vaughn
- 3rd. Gloria White - Vaughn

Honorable Mentions; Christine Durance, Vaughn, Alicia Lemon, Evergreen, Cheryl Nelson, Evergreen.

Juror for the grade school art competition was Dori Richards, artist and art instructor.

DR. PENROSE GUILD

The November meeting of Dr. Penrose Orthopedic Guild will be a tour of Mary Bridge Children's Hospital, followed by a luncheon in the Tacoma Orthopedic Guild Room. Plans for the Christmas auction will be discussed. The members will meet at the Gift Shop in the hospital at 10:45 on November 12.

KC MEATS LOCKER BEEF Smoking & Sausage Mobile Slaughter Frozen Food Lockers

NEW HOURS

CLOSED SUNDAY & MONDAY
TUESDAY-FRIDAY 10AM-6PM
SATURDAY 10AM-5PM

884-4334

AFTER Chaim Weizmann, Israel's first President died, Ben-Zvi was elected to take his place. An unassuming man, Ben-Zvi was stunned as he returned to his modest home. There in front of his house was a soldier. "Why are you here?" Ben-Zvi asked. The sentry told him that he had been posted by Israel's Chief of Staff. "Well, come inside for some tea," Ben-Zvi suggested. "It's cold out here!"

"I'd love to, sir," the soldier replied, "but my orders are to guard your front door."

Not quite knowing what to do, Ben-Zvi went inside. Then in a flash Ben-Zvi opened the door again and said: "I'll tell you what, you go inside and warm up. I'll guard the door for you."

**HAPPY
THANKSGIVING**



LISTEN TO YOUR BODY

If something's going wrong,
it'll tell you.

1. Frequent Headaches
2. Stiffness of Neck
3. Pain between Shoulders
4. Painful Joints
5. Backache
6. Pain in Arms or Legs
7. Nervousness
8. Leg or Foot Cramps

These 8 danger signals may be caused by pinched nerves and respond to modern CHIROPRACTIC TREATMENT. Delay causes any condition to grow worse, if you have one or more of these symptoms, call the number listed below for information or an appointment.

**Collins
Chiropractic Center**

K.C. CORRAL

CALL 884-3040

MON. & FRI. 10-6

WEDNESDAY 10-1

True Value
HARDWARE STORES

**BARGAIN
OF THE MONTH**

QUANTITIES LIMITED



now **9⁹⁸**

**AUTOMATIC
CAN OPENER**

Sharp electric opener is a functional bargain for your kitchen! Hardened steel blade, magnetic lid holder. 5-121

KEY WESTERN
BUILDING CENTER

HOURS: 8 a.m. to 5 p.m. - Mon. thru Sat.

884-2311



THANKSGIVING THOUGHTS

Bragging was unmanly when I was a kid. We were attuned to listen for signs of blowhardism in adults, so I approach this subject with caution.

A few days ago an admirer hinted that my writings are "on a sixth grade level." Nothing could have pleased me more, because that is exactly what I have been trying for. Those were the days of reasonable innocence, when we still suspected our parents of having a slight amount of common sense. Later we realized our mistakes, but it is fun to recall those carefree times.

We kids were raised with guns, which were used to capture food and to repel invaders in the henhouse; such as coon, mink, and on the mainland, skunks. Hawks, owls, and crows were shot, or shot at, just to keep their attention. Because of that, the wild things respected man and did not hang around robbing the dogs and cats, as they do now.

Some rules came with our use of guns. Number one: Never point a gun at another person. All guns are considered loaded, without question. "Do not take a loaded gun in the house, lean it against anything, or drag it thru a fence." I might tell some stories about missing fingers and a boy who crawled 1/4 th. of a mile with his intestine dragging along the ground, some times. (Yes, he died.)

Now comes to mind a cold November morning! getting up before daylight; bellying through tussocks to lie behind a big log until legal sunrise. This was at a sandy beach on the north end of McNeil island. The peeping of widgeon carried to us on the north wind. They were feeding on green seaweed, which gives them strong flavor. They are better than divers, or fish ducks, but we did not care much for them.

Daylight was slowly uncovering the water when we heard the quaking and gabbling of mallards. Mallards! The acme of ducks! They would neither be strong nor fishy. Take a peek; how far out are they? Careful! Ducks have fantastic eyesight. Oh boy! Only about a hundred feet out, and when they jump, the wind will hold them for a second. Ready now; When I say go, we stand up; I take the left; you take the right; and don't shoot until they are at the top of their jump, or we will only blow a big hole in the air beneath them.

Go!!! Two 12 gauges blast; the widgeon take off with a roar, leaving 3 hen mallards and a beautiful green-headed drake drifting slowly toward shore.

We were praised for bring home the Thanksgiving dinner, "just like old Daniel Boone." We modestly said that Boone probably could have better if he had a repeating shotgun.

ALL MY SOMEDAYS IS INTO IT'S SECOND YEAR

by Stella Retherford

The second year off All of My Somedays Living History Project is well started into it's fall, 1981 sessions with fourteen participants under the guidance of Susan Wallace. The unique character of the program is the variety of personalities and their contributions which often sparkle, evoke a laugh or a tear, but the intellec-

tual interaction is never dull. Personal and family history make up the theme which takes many variations. MS Wallace aids class members to did deeply into buried memories to extricate ideas, persons and happenings which helped shape the adult that each has become. Accurate descriptions of areas, building, feeling, textures, smell, color, taste. etc. are stressed over simple recounting of where and when.

Together we work to give written substance to our life stories using reading, writing and good talk as tools. It is an invitation to shape lives. People often do not realize how fascinating and unusual their lives have been until stimulated to recall happenings long forgotten. The tenor of the group is developed by the people in it and writing projects grow out of the lives and concerns of individuals. Several persons are recording significant episodes in their lives while others delve into the way their community has affected personality and life styles.

Completed pieces of writing from this workshop will be printed and copies given to participants, and with their permission, they will be included in the library's collections of American History, Northwest History, Autobiography and Literature.

The program is free and a person may register by attending a seminar meeting held at 2 pm. to 4 pm. Mondays at the Key Peninsula Library in Key Center. The project is supported in part by a grant from the National Endowment for the Humanities and sponsored by Pierce County Library and Tacoma Public Library.

PENINSULA NEIGHBORS

The homemakers Extension Service will again give a Holiday Program, watch for the date in Stutz Announcements.

KEY PENINSULA LIBRARY HOURS

MON. & THURS.: 1-5 p.m. - 6-9 p.m.
TUES.: 1-5 p.m.
SATURDAY: 1-12 noon - 1-4 p.m.



JACKSON & ROBINSON attorneys

- Wills and Probate
- Personal Injury
- General Civil and Criminal Practice
- Free Initial Half Hour Consultation
- Divorce
- Bankruptcy

Calvin C. Jackson and Jeffrey A. Robinson

3620 Grandview Street Gig Harbor, WA 98335
(206) 851-5126

Lakebay Community Church

Applying Bible Principles to Everyday Living

SUNDAY SCHOOL 9:45 AM NURSERY CARE
SUNDAY WORSHIP 11:00 AM SERVICES FOR YOUTH AND ADULT
5:30 PM
ONE MILE SOUTH OF HOME PHONE 884-3899
PASTOR VERNON WIGGERS 884-2395

Little by Little

-By Ruth Little

Last month, when I was writing about the Amish quilt Exhibit at the Henry Gallery in Seattle, I didn't know that we, at the Senior Society, would be able to organize a spur-of-the-moment bus trip to see it. The Senior Club is a live wire organization with lots going for it. (They found a bus at the flea market which they bought and have put into good condition.) It's a real pleasure to go on their trips - the men who offer their services as drivers are good so one can relax - it's good as a taxi even better as you have the good company on the way.

Now about the trip -- The quilts were as exciting as I had dreamed they'd be-- deep, intense colors in big bold geometric designs with beautiful perfect quilting; The material was mostly handwoven work - A very tightly woven, very light weight material like a very fine gabardine. Since the quilts were strictly utilitarian (the women who made them had no idea that they would someday bring a fancy price and be displayed) they were not always perfect. SaVanne

Shirley and I discovered several small flaws in the piecing and the Double Irish Chains quilt had one square appliqued by machine at the corner of each block. (If you've made that pattern you know what i mean, otherwise skip it.) That was nitpicking on out parts and such tiny flaws didn't distract from the beauty one bit. The sunshine and Shadow quilt (which is about as worldly as the Amish get) was a lovely study in color,-- shades of deep blues, purples, lavenders, and pinks, -- all home dyed with native materials.

The accompanying exhibits with the quilts was a remarkable display of hand made tools in beautiful handmade tool chest.

As noon approached the bus picked us up at the Henry Gallery and drove to the Pike Street Market for lunch and a leisurely stroll about the market. It was a beautiful day and we all enjoyed it. My one regret was the cancellation of three persons too late for me to get replacements to fill their empty seats. There were so many who wanted to go but couldn't be contacted the last minute.

Do you watch channel 13, 8 o'clock movies? They are mostly old movies and often exceptionally good. One week recently was all Frank Sinatra films. I watched " Anchors Away" and loved the singing and dancing. Gene Kelly was the co-star. Those 2 boys were so young and there was a fresh innocence about the whole movie that

was as refreshing as a breath of fresh air. Of course Kelly and Sinatra represented a lot of talent. Sex and violence seem to appple more to modern audiences but give me a little bit of talent and skip the violence. I wonder if any young people watched "Anchors Away" and weather they enjoyed it. I doubt if the crowd that paid \$ 16.50 to hear the caterwauling and frenzied wild, cavorting about the stage of the Kingdom would be interested in hearing Frank Sinatra sing the Brahm's Lullaby. It was perfect. Let me hear from you, kids. I'm interested in what you think

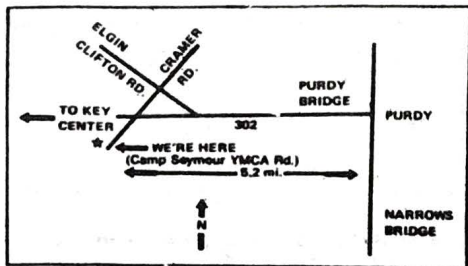
My closing thought for today is another quote from Norman Cousins whom I consider one of the best minds. " The dangers of nuclear war is the number one problem. The number two problem is that many of the best minds in our country are not focused on the number one problem."

NOTHING in this world can take the place of persistence. Talent will not; nothing is more common than unsuccessful men with talent. Genius will not; unrewarded genius is almost a proverb. Education will not; the world is full of educated derelicts. Persistence and determination alone are omnipotent. The slogan "press on" has solved and always will solve the problems of the human race.

CALVIN COLLIDGE

D.J.'S TIRE SERVICE 12118 Cramer Rd. N.W.

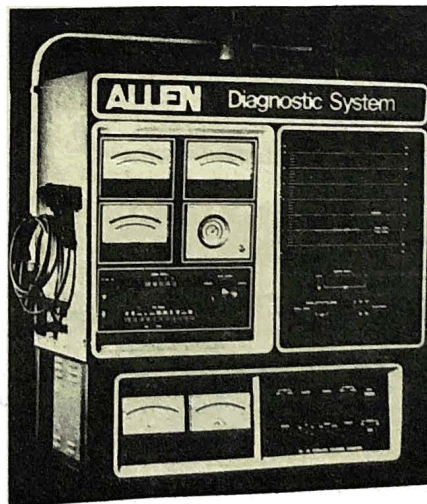
Camp Seymour YMCA Rd.
Gig Harbor, WA. 98335
857 - 6430



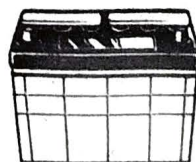
VISA & MASTERCHARGE O.K.

"NEW SERVICES"

- Computer Alignment & Suspension Repair
- Car & Light Truck Brake service, Drum & Disc
- Tune Ups
- 4x4 Service & Repair
- Electrical System Service & Repair
- Expert Minor Repairs
- Headlight Alignment
- Batteries Available



**2 FULL TIME MECHANICS
ON DUTY**



Silver Threads

KEY PENINSULA SENIOR SOCIETY

There are 35 to 50 senior citizens who get together for a delicious potluck at noon in the Gold Room of the Civic Center every Thursday. The following officers were elected recently:

President - John Entwistle
1st V.P. - Clara Kurz
2nd V.P. - Eleanor Stock
Recording Sec.-Dolores Ramsdell
Corres. Sec.-ZoeRae Sanders
Directors-Bud Franklin,
Bob Smith, Georgia Gillis

The officers cordially invite other seniors of the community to come and join the interesting programs and fellowship.

Here is something the membership is looking forward to on November 19. THANKSGIVING! Turkey will be furnished so make your favorite salad, vegetable or dessert and plan to come.

One of the highlights of the interesting program that day will be an enthusiastic auction of worthwhile things such as a free lube and oil change, grocery merchandise, dinner for two and others which you will want to come and try to win. Tickets are 3 for a dollar and may be obtained from Clem Kurz, 884-3623 or may be purchased at the door. Now, come on all you senior gals and guys of the community. Come and start the holiday season with a beautiful Thanksgiving dinner and a lot of fun.

THANK YOU !

The Key Peninsula Senior Society wishes to thank the following community merchants for their contributions and support:

Key Western Building Center
Peninsula Mower
Jerry's Cafe
Charlie's Saw and Mower
Key Center Meats
Walt's Grocery
Key Center Shell

Best wishes to them for the upcoming holiday season!

LONGBRANCH HOLIDAY BAAZAR

The annual Longbranch Church Luncheon and Holiday Bazaar will be held November 7th at the Fellowship Hall from 10 AM to 3 PM. Plan to come and enjoy.

BAYSHORE GARDEN CLUB

On Friday November 20th at 1 PM, guest are invited to the Longbranch Church Fellowship Hall. The program is Holiday arranging by club members, Virginia Tillman, Ruby Hatch, Edith Pinder, Gladys Allen, Dorothy Peusa, and Jackie Jopp. The hostesses are Pearl Pautta, and Arvilla Merchant.

NUTRITION

Senior Nutrition Class, under the supervision of Anne Engelsen meets for lunch on November 10th, noon at the longbranch Church. The menu prepared is Spanish Rice, Fruit Jello and Carrot Cake. On November 24th, Ham Balls, chilled Vegetable Salad and Fruit Cake. Call 884-3716 if interested.

PENINSULA SOCIAL CLUB

A potluck dinner and meeting of the Peninsula Social Club will be held at the Longbranch Church Annex at 6:30 p.m. on Tuesday, November 10.

VANDALISM OF SIGNS AND FENCES

Many signs and fences in the Lower Peninsula area have been vandalized over the past several months. It has been costly and many area residents are highly upset about it. Volunteer Park has had its fences rammed by vehicles and its lawn run over, leaving deep marks in the grass. In order to stop this destruction, Lower Peninsula residents concerned about this have decided its time to keep an especially watchful eye out for the culprits. They feel this vandalism of signs and fences can be stopped if we all stay alert and report any findings to the authorities.

EVERGREEN PARENT GROUP MEETS

On November 5 at 7:30 at Evergreen School, the parent group will have its second meeting. It is hoped that by having a night meeting, more parents will be able to attend, especially the working parents.

This meeting will focus on the Christmas program. This year the parent group would like to present the program and much help is needed. All Evergreen parents are invited and encouraged to come and help make the Christmas program a success.

FOUND: Beautiful Orange Cat with red bell collar. Call 884-2025.

A generation ago we were told we weren't as smart as our parents. Today we are told we aren't as smart as our kids. Where, oh where, did we go wrong?

Need a Quick Gift? We now carry a nice line of Costume Jewelry!

Do you need ~

- * Ribbon
- * Glue
- * Glitter Glue
- * Glitter
- * Styrofoam
- * Wreaths
- * Felt
- * Straw Brooms
- * Straw Fans
- * Plastic Grid

for your Christmas Decor? We have it.

Sherman's Arts & Crafts

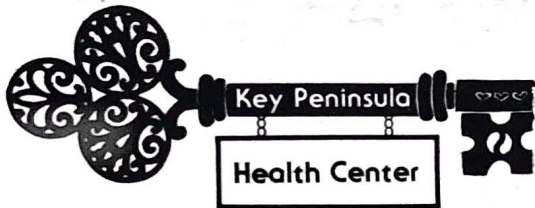
LAKEBAY, WA.
PHONE 884-2454



Port Orchard Travel Service
788 Bay Street
Port Orchard, Washington 98366
Sandy Foster
Travel Consultant (806) 884-3656

Al-Anon Family Groups

Mon.-8p.m.-Key Pen. Health Center
Tues.-1:30p.m.-King of Glory
Lutheran Church-Purdy
Wed.-8p.m.-St. John's Episcopal
Church - Gig Harbor
Fri.-8p.m.-Key Pen. Health Center
Sun.-8p.m.-St. John's Episcopal
Church - Gig Harbor
BEA: 884-4133 MURIEL: 884-889



SENIORS WELLNESS CLINIC: Second Tuesday each month. November 10th.

MEDICARE INFORMATION: Call Bill Stratton at the Clinic at 884-2021 on Tuesday, Wednesday or Thursday for information or appointment to discuss problems, questions, etc., about medicare.

BACK TO SCHOOL NIGHT AT K.P.M.S.

On Thursday, November 19 from 7:00 p.m. to 9:00 p.m., Key Peninsula Middle School parents will have a chance to walk through their child's daily school schedule. Parents only are invited to this ten minute tour of each class their children are in. After the walk-through, parents will have an opportunity to chat with other parents and teachers. The Key Peninsula Parent Group will be selling dessert and coffee before and after the tour.

Later this fall, conferences will be held with teachers and parents, and also an open house will be given when students may come with their parents.

NEW HOURS:

MON., TUES., THURS., FRI. - 9am to 5pm
WEDNESDAY - 9am to 8pm
SATURDAY - 9am to 1pm

NEW BUILDING: Looks like the building permit for the new clinic, adjacent to the library in Key Center, will be issued in late October. This should mean a start in November, and completion sometime in the Spring (Maybe April??).

WELL CHILD CLINIC: First and third Tuesday each month. November 3rd and 17th.



Peninsula School Events November 1 through 23

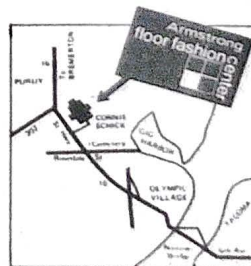
- 1 — GHHS JV Football vs PHS at GHHS
- 2-6 — All Elem schools, Conference week, early dismissal
- 2 — PHS Volleyball vs Spanaway @ PHS
Goodman and KPMS All Star Soccer @ KPMS
- 3 — GHHS Soccer at PHS
All Schools, Election Day, VOTE
- 4 — Night Football GHHS @ PHS
9th Football PHS @ GHHS
GHHS Swim at Washington
- 5 — PHS girls soccer @ N. Kitsap
GHHS V Football @ Fife
- 6 & 7 — Discovery Elem., " Holiday Discovery (Bazaar) Discovery Elem
- 7 — Harbor Heights Elem., Christmas Bazaar - HH Gym
GHHS X-Country District meet at GHHS
GHHS Choir retreat
GHHS debate @ GHHS
- 11 — No School
- 12, 13, 14 — GHHS Fall Play "12th Night" in Aud
- 13, 14 — GHHS Debate @ Puyallup
- 14 — GHHS X-Country @ GHHS
GHHS Ski Swap @ GHHS
- 16 — GHHS Turnout for winter sports @ GHHS, wrestling, B/G Basketball, Swimming
- 17 — Goodman Boys BB, Goodman @ N Kitsap
- 19 — KMPS BB @ Bainbridge Island
Open House KMPS
- 19, 20, 21 — PHS Fall Play, "Arsenic and Old Lace @ PHS Aud.
- 21 — GHHS Tidefest @ GHHS
- 23 — GHHS Boys Swim Turnout @ GHHS

Connie Schick FLOOR COVERING

Springhill Business Center
8803 State Road 16, Gig Harbor
Hours: Monday thru Friday, 9 to 5:30. Saturday, 10 to 2.

Washington State Contractor's License No. CO-NN-1S26 48D

858-9129



STAFF NEEDED FOR NEWSLETTER

Do you have experience working on a newspaper or putting together a newsletter of any kind? Or have you ever had the desire to do this kind of work, but haven't had a good opportunity?

The Key Peninsula Newsletter Staff is looking for help. We need people to write articles, type, paste, edit, do layout - just about every aspect of putting this newsletter together could use more help.

The people who work on it now find it enjoyable and rewarding, however, due to circumstances are now finding it difficult to devote as much time as they would like to the paper. It has been written before when we have been searching for volunteers that working on the Newsletter involves six to twelve hours a month depending on what kind of task you perform. Of course the more people working on the paper, the less time it would consume for all involved.

The Newsletter is indeed a worthwhile venture for the Lower Peninsula. Many people count on it to get news out to the residents of this area. And from what we hear, lots of people really appreciate the Newsletter and enjoy reading it.

If you feel this is something you would like to volunteer your time for, we here at the Newsletter would

be more than happy to spend time training you on the procedures here. Call Marion Wagner at 884-3606 or Jeannie Sagle at 884-3161 for more information or maybe even to volunteer.

A successful author once confessed to Mark Twain that he was losing confidence in his ability to write. "Did you ever get that feeling?" he asked Twain.

"Yes," admitted the humorist. "Once after I had been writing for 15 years, it suddenly dawned on me that I did not possess the slightest talent for writing."

"What did you do?"

"What could I do?" shrugged Twain. "By then I was already famous."



at the deadend of 38th St. NW
Gig Harbor

just off Highway 16
under the Wollochet overpass

RECYCLE FOR CASH WITH US!

open
Monday through Saturday 12 to 5

851-5507

buy:
aluminum cans
NW beer bottles
brass
copper
lead
scrap aluminum
tin cans
radiators
car batteries
newsprint
computer cards
printout paper

accept:
glass
magazines
cardboard
telephone books

**SPECIAL DISCOUNTS ON
CENTENNIAL TRADITION IV
DURING NOVEMBER!**



CENTENNIAL TIRES



**CENTENNIAL
Tradition IV**



VISA & MASTERCHARGE O.K.



Computerized Wheel Balancing

For a smoother ride...

Featuring our FMC Electronic Wheel Balancer

RIKEN TIRE

D.J.'S

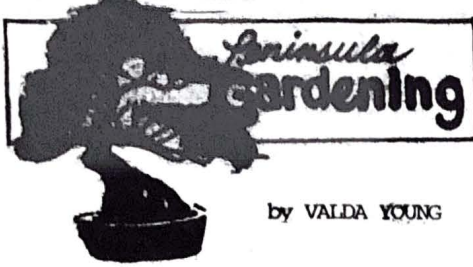
TIRE SERVICE

12118 Cramer Rd. N.W.

(Camp Seymour YMCA Rd.)

Gig Harbor, WA. 98335

857 - 6430



by VALDA YOUNG

November -- the harvest is over the bulbs are planted, your beds all cleared of trash and debris that could give shelter to slug and all the destructive insects and worms. Now the falling leaves are your current problem I put mine in a big compost bin, add all the garbage that will decompose, cover lightly with soil, perhaps three

times a year, and add the wood ashes from two fireplaces. The winter rains wet it thoroughly and by spring I have lovely friable soil for all my planting. The garden books have many complex formulas for composting but here in the country where we have the space this way is simple and it works. I have two large bins. One is filled with good composted soil that I use. It seems to last nicely till the next bin is ready.

It's time to start pruning and spraying for the fruit trees. Remove dead or injured branches. Those that cross or grow toward the center of the tree and shorten excessively long branches. Well trained, mature trees just need to be kept short enough so spraying is not an excessively dif-

ficult chore. That is one advantage in planting the dwarf or semi-dwarf trees now available.

The experts advise three applications of dormant spray on fruit and shrubs in this climate. That sounds easy enough, but a day that meets the requirements are rare in this area in November, December, and January. The essentials are; Little wind, No rain, for several hours after spraying, and a temperature above 40°.

WARNING: Never use dormant spray on ro near any virburnum, the sulflur will kill the plant.

If you have carrots, parsnips, or turnips still in the garden, they can safely be left there and pulled as needed. Except during those rare times when the thermometer drops down to 10 or near that point our winter soil provides safe storage.

SPECIAL NOTE:

State Holiday Show, Nov. 10-11
Seattle Center. Northwest Rooms.
Nov. 10 7 P.M. to 10 P.M. and
Nov. 11 9 A.M. to 4 P.M.

A show filled with interesting holiday designs, educational horticulture exhibits and boutique bazaar, and dried plant booths. Tickets are \$1.00 if purchased before show, 1.50 at door.

GET WELL SOON, KAY!

Our wonderful typist here at the Newsletter, Kay Beck, has been ill for the past month. We would like to express our concern and hopes for a speedy recovery on her part. We miss you, Kay, and please get well soon!



**WE SUPPORT
HUGH McMILLAN
FOR FIRE COMMISSIONER,
DISTRICT 16.
HELP US ELECT HIM.**

Aline Anderson
Arne Armour
Larry Bell
Roger Bille
Richard D. Binion
Dave Blondell
James H. Blundell
Gene Battell
Ron L. Brown
Gail A. Bonn
Jim Brennan
Joy Barrera
Richard Callahan, Jr.
Chris L. Christensen
Colline Coburn
Hazel Conboy
R. L. Coovert
Jean Christoffessen
Helen Canfield
Michael Cashman
Dr. N. J. Collins, Jr.
D. Dadisman
Pete Dahl
Edith J. Dunn
Shirley G. Davidson
Glenn A. Ellsworth
Lydia Eilers
Nancy A. Ewing
James E. Ewing

Dean Ennis
Donna Ennis
H. Ennis
Lorene R. Erickson
Jerry M. Forrester
Ruth Ferguson
Jay Floberg
Mary Grubb
Carla Griffin
Kent S. Hoffman
Joanne J. Hostetler
Mark Hostetler
F. J. Hawkins
Willa Hawkins
M. Diane Hawkins
D. H. Hostetler III
William H. Heine
Debra Hutchins
April G. Hoff
Tom Ingle
Larry M. Imes
Judy Jaggi
Bernice G. Johnson
Frank R. Juesnel
Edyth Johnson
Donald Jopp
Max Jewitt
Lynn and Julie Johnson
Gesel Keller

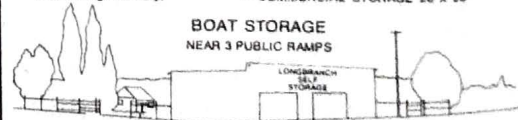
James V. Latteri
Timothy Lemon
Virginia E. Logan
Charles Lee
Gail Latteri
George Lund
Vivian A. Lemon
Sherlie Marietta
Marylou Moore
Terry Moore
Charles Minchau
Max Marlow
Gerald Marsh
Larry Melsness
Patricia J. Misener
Lawrence H. Nicholson
Rick Olsen
Don Olson
Dan Orme
Linda Orme
Michael Osmon
Norm O'Day
Conn O'Scannlain
Edward H. Paine
Lawrence T. Pinter
James E. Paul
Lynn Radcliffe
Phillip Radcliffe
Ruth Rickert

Mary R. Ripley
Ernest Rouse
Pat Rodine
Johnaida Rikansrud
M. B. (Banks) Richie
Clark Roosa
Richard R. Raschle
Charles C. Ross
Ray De Rocher
Minnie Rickert
John E. Schmidt
Walt Schmidt
Dean Shriner
Hyrum E. Stocking
Richard G. Stout
Shirley Sorenson
Lise C. Selke
Allenda Smith
Stan Sorenson
Elmer Skahan
R. G. Schultz
Scott Schultz
H. A. Sien, Jr.
Martha L. Taylor
James Voss
Flo Williams
Catharine Watkinson
D. S. Wolniewicz
J. A. Whalen

**VOTE FOR HUGH McMILLAN
FOR FIRE COMMISSIONER
HE GETS THE JOB DONE!**

LONGBRANCH SELF-STORAGE

ON-SITE MANAGER (Guard Dog On Duty)
• LOCKERS 5 x 5 & 5 x 10
• GARAGE SPACE 10 x 15 & 10 x 24
• COMMERCIAL STORAGE 20 x 20



BOAT STORAGE NEAR 3 PUBLIC RAMPS
RT. 2 BOX 425 LONGBRANCH, WA 98351
PHONE (206) 884-4468

LAND CLEARING
ROAD CONSTRUCTION
BANKRUN - GRAVEL
FILL DIRT HAULED
#AC-TI-VC-315PF



ACTIVE CONSTRUCTION

P.O. Box 191 - Gig Harbor, WA 98335
Bus. 858-2380 - Eves. 884-2884

CHARLIE'S SAW & MOWER



1 mile North of Key Center on Highway 302
Jacobson - Airens Dealer
Authorized Briggs & Stratton Service Center

Saw, Knife & Scissor Sharpening
Nylon Line Trimmers & Brush
Cutters on hand for immed. use
884-3183 Shop 10109 St. Rd. 302
857-6286 Home Gig Harbor, Wa 98335



QUALITY CONSTRUCTION

New Homes • Remodeling • Licensed • Bonded

OREN PETERSON
Phone 884-3093

Rt. 2, Box 439E
Gig Harbor, WA 98335

Lucile's Barber Shop

Hours: Tuesday thru Saturday
9 a.m. to 6 p.m.

1 short mile south of
Rocky Bay Health Care Center
on Hwy. 302 going to Shelton

884-3732


BURTON MACHINED PRODUCTS INC.

23002 Silver Bow Road, Keycenter
Gig Harbor, Washington 98335

OPEN MON. THRU FRIDAY
7 A.M. TO 3:30 P.M.

JACK BURTON 884-2877

858-6066 (SHOP)




LARRY NICHOLS
Upholstery

COMPLETE FURNITURE REUPHOLSTERING
BOAT TOPS

NOW LOCATED IN GIG HARBOR

KEEP YOUR CLOTHES
LOOKING GREAT
with
Highland
Dry Cleaning-Laudry

Alterations - Repairs 564-6471
7110 6th Ave. (By the Narrows Bridge)
Tacoma, WA. 98406 Bob & Frudy Jones



QUE-DEE ENT. DBA
Summerick
INSECT & WEED CONTROL

WEED CONTROL •
TANSY •
BLACKBERRY •
DANDELION •
INDUSTRIAL •
PEST CONTROL •
ORNAMENTAL •
TERMITES •
ANTS - FLEAS •
PRUNING •
SHOPPING •
CENTER MAINT. •

Patty L. Morrison
P.O. Box 1251
Gig Harbor, WA. 98335 **857-7592**

Longbranch Automotive Center

AUTO REPAIR JERRY HANSEN
+ DOMESTIC Longbranch, WA.
+ FOREIGN South of the Church
(206) 884-3272

Bo-Mac Gravel Co.



1920 S.W. PINE RD.
PORT ORCHARD, WA. 98366

OPEN SATURDAY


R. F. "MAC" McCLOSKEY
PARTNER 876-2003
857-4185

WALTS FINE FOODS
AL'S MEATS

Look for Weekly In-store
Specials

FRESH PRODUCE
QUALITY MEATS

In Downtown
Key Center 884-3325



N' TACK

FEED, ACCESSORIES AND
SUPPLIES FOR ALL LIVESTOCK,
POULTRY, DOGS & CATS

OPEN 7 DAYS A WEEK
884-2850
RT. 1, BOX 298AA, LAKEBAY, WA 98349

DID YOU KNOW
Most Insurances
Cover Chiropractic

- NHA (Federal Employees)
- Blue Cross
- Medicare
- Workman's Compensation
- MAN OTHERS Ca us to find out if ours covers.

Call 884-3040
Collins Chiropractic Center
KC CORRAL



Pet Grooming

TOP QUALITY - REASONABLE RATES
That Touch of Fluff
By Dyan
For Appointment Call 884-3588

HOME FEED & GROCERY

9-7, Weekdays 11-6 Sundays
884-2321



Featuring "Choice Beef"
Fresh Produce
Fishers Feed
friendly Service

SEPTIC TANK TROUBLES

REMEMBER...BEFORE TROUBLES
TANKS SHOULD BE CLEANED
EVERY 3 TO 5 YEARS.

**HEMLEY'S SEPTIC CLEANING
& ROOTER SERVICE**

CALL FOR INFO. 858-3432

**COMMERICAL, RESIDENTIAL
ELECTRICAL INSTALLATION**

P. O. BOX 65
VAUGHN, WASH.

DON MILLS
PH. 884-2511

WANTED ADS

HANDYMAN- 884-4210

WANTED: Old radios from the 20's and certain sets from the 30's and 40's. Any condition ok. Also parts, tubes, speakers, radio books, etc. 857-4687. Befor 3 p.m.

CARPET LAYING: Repairs, restitch, etc. Call Jim Rich, 884-3082.

BUD'S OF LAKEBAY T.V. REPAIR. Antenna installation. Color & black and white. Fast, dependable service. Call 884-2217.

FLOOR COVERINGS INSTALLED: Carpet, linoleum, tile, parquet, ceramics. Orrie Moore, 884-3852.

RAW MILK FOR SALE: From healthy, well fed Holsteins. \$1.50 per gallon. Silverbow Farm, Key Center, 884-3314.

BEEF FOR SALE: grainfed, no hormones, no implants, excellent quality. Cut and wrapped for \$1.45 per pound. Silverbow Farm, 884-3314

WANTED: Spoiled Hay. I will buy and haul. 884-2026.

SEWING AND ALTERATIONS: Ten yrs. professional exp. Call Claudia Loy, 884-3456.

HANDYMAN- for house and yard work. Call Dale, 884-3456.

FREEZER FOR SALE: Gibson Frost Free, 12 1/2 Cu. inches. Upright. \$60. 884-2067.

FOR SALE OR BARTER: 90 yr. old piano, old violin, prospector/miner equipment, telefeunkin dictation machine with steno transcriber unit. Call 884-3581 or 884 4440

DINING ROOM TABLE FOR SALE: Colonial style 44" round walnut table, extends to 64" with two leaves. Heat proof surface. Six mates chairs. In very good condition. 884-4175.

Key Peninsula Lutheran Church

REV. ED WAGNER
Civic Center - Vaughn




SUNDAY SCHOOL: 9:30am
WORSHIP SERVICE: 10:30am

Minterbrook Oyster Co.



Open 6 days a week
9a.m. to 4p.m.
(Closed Sundays)
Retail-Wholesale
857-4351


9'S FAIR HARBOR MARINA




MOORAGE
DISEL-GAS-OIL

BEER - WINE - MINI GROCERY

OPEN: 7 A.M. - 7 P.M.
CLOSED THURSDAY



426-4028 RES. 275-6417
FRESH GEODUCKS



Northwest Firearms
Across from Fire Station Key Center

GUN REPAIR

COUPON

\$25.00 OFF
ANY NEW LONG GUN

SUBJECT TO STOCK ON HAND

OFFER EXPIRES 11/30/81

COUPON

884-4747
Closed Monday

OPEN TUES~SUN
Hours 10to7

Owner: Dave Walden



BUTTONS AND BOWS

K.C. CORRAL
Key Center
884-3971

SHOP NOW FOR
CHRISTMAS GIFT SEWING

Terrific Savings

45% OFF ON ALL FABRIC
35% OFF ON ALL NOTIONS & PATTERNS
SALE THRU NOVEMBER

857-4276

Merle Free Automotive Repair

ALL WORK GUARANTEED

over 30 years experience

1 1/2 MILES ON CREVISTON DRIVE.- 1ST LEFT TURN SOUTH OF THE FRUIT STAND

ALCOHOLICS ANONYMOUS

MEETINGS HELD AT KEY PENINSULA HEALTH CENTER.

Key Center Group-Mon.-8 p.m.

Longbranch Group-Fri.-8 p.m.

CALL: ANN 884-2626
BURKE 884-3262
JIM 884-3886



BULLDOZING BACK-HOE
GRAVEL AND FILL DIRT LOG BULKHEADS

Johnson Bulldozing Co.
LAKEBAY, WASHINGTON 98349
PHONE 884-2362

DAVE JOHNSON PHONE 884-3330
PHIL JOHNSON PHONE 884-2607

JERRY YORK

York Insurance Agency

Auto • Life • Fire • Homeowners • Boat

Springhill Ctr. - Hwy 16
Post Office Box 364
Gig Harbor, Washington 98335


Office 858-9560
Res. 857-6567

Tree Pruning & Cleanup

QUALITY, EXPERIENCED WORK

FREE ESTIMATES

857-6839




TOM'S BARBER & TACKLE SHOP

OPEN 10 - 5:00 P.M. Key Center
TUES. THRU SAT.

STATE MUTUAL SAVINGS BANK

LOCATED DOWNTOWN
GIG HARBOR PH. 858-9927
Nine offices serving Pierce Co.

857-4011



GEORGE D. DURIS
BRANCH MANAGER - PURDY

Western FARMERS
P. O. BOX 23, BURLEY, WASHINGTON 98322

SAKURA NURSERY

884-3937 KEY CENTER, WA.

- *HOUSEPLANTS
- *BULBS
- *POTTING MIX

HOURS: Tues.-Sat. 10-5p.m.
Sunday & Monday Closed

L.E. Jopp Builders

LICENSED & BONDED

- ★ Carpenter Work
- ★ Foundations
- ★ Bulkheads
- ★ Concrete Work etc.

884-3841
CALL COLLECT

KEY CENTER DRUG

884-4144
Monday thru Saturday

Rt. 1, K.C. Corral #F
Key Center, WA 98349

Jim McMahon
Kathy McMahon

LONGBRANCH MERCANTILE

FINE FOODS
MEATS-PRODUCE-GROCERIES
GAS-OIL-BEVERAGES

HOURS: Everday 9 a.m.-7 p.m.
884-3721

John Brewer (206) 857-2253

BREWER ELECTRIC CO., INC.

Residential-Commercial

14519 Pascock Hill Avenue, N.W.
P. O. Box 228 Burley, WA. 98322

Peninsula Accounting Associates

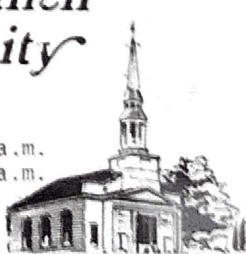
4209 Pt. Fosdick Rd., Suite 203
MAIL: P.O. Box 676
Gig Harbor, WA 98335

JOHN E. MILLER Office: 858-8852
WALTER E. PAULSEN or 858-8168

Longbranch Community Church

Sun. School: 10 a.m.
Bible Study: 10 a.m.
Worship: 11 a.m.

Longbranch, WA.



dump truck
backhoe
grader
blade


GRADER SERVICES

884-2271



top soil
road gravel
rockery rock
crushed rock

PHIL RADCLIFFE
route 1, box 95c
lakebay, wa 98349



Randy's Bulldozing

4 in One Bucket • Land Clearing • Stump Haul
Excavating • Dump Truck • Roads Punched
• GENERAL DOZING •

RANDY NIMRICK
HARRY NIMRICK

Rt. 4, Box 4783-1,
Gig Harbor, WA 98335

1-857-2625
1-884-2590

DUANE G. FLENING

Cascade Insurance Underwriters, Inc.

2200 8TH AVENUE • TACOMA, WASHINGTON 98403

AC 206/627-3133
Residence 884-3340

ST. JUDE'S BIKE-A-THON A SUCCESS

Residents of Lakebay and Longbranch: the St. Jude Children's Research Hospital Wheels for Life Bike-a-thon is over for this year and we want to sincerely thank the citizens of Lakebay and Longbranch for their generous support of our campaign.

We are extremely proud of the "Key Peninsula Nine" who put forth so much effort pedaling their bicycles for Wheels For Life. The hard working volunteers deserve much thanks, too: Bob Kepler, Ann Sutton, Vickie Henschel, John Schmidt, and local businesses- Longbranch Merchantile, Home Feed and Grocery, Walt's Fine Foods, and Al's Meats. Their efforts

made this event a success. Thanks also goes to all the many sponsors. We raised a grand total of \$325.00.

Because the diseases that St. Jude Children's Research Hospital is battling can strike any child anywhere, this money will be helping to save children's lives all over the world.

It is a wonderful feeling to know that the people of our community are concerned and caring individuals and, on behalf of the children of St. Jude's, I want to thank each and every one who helped.

Sincerely,

Jim Sammons
Campaign Chairman

SECOND ANNUAL "TO THE COUNTRY" ART SHOW AND SALE

"To the Country", a presentation and sale of work by 14 area artisans, will occur on SUNDAY, NOVEMBER 22nd, from 10:00 a.m. to 5:00 p.m. The exhibit will take place at the home and studio of Ruth Brockmann and Richard LaLonde, on Lackey Road.

Participants in "To the Country" are all quality artisans from the Peninsula and Tacoma area. Together they represent 10 media and a broad spectrum of experience.

ARTISANS PARTICIPATING:

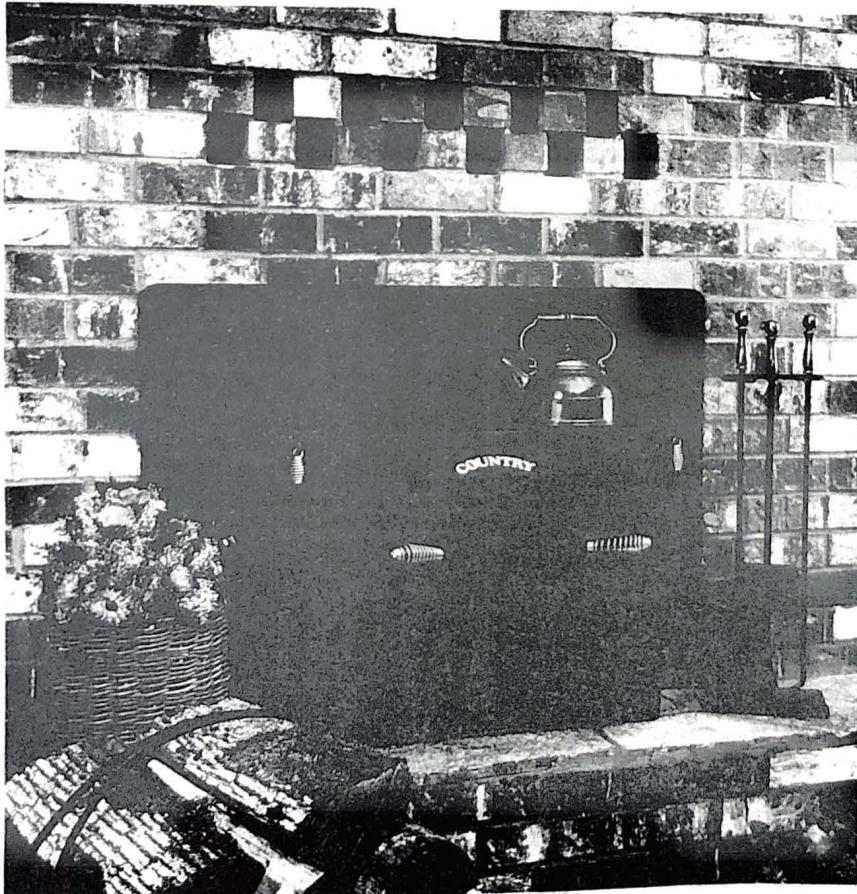
Walter Barkas, woodcarving; Ruth Brockmann, art glass; Britta Brones, weaving; Margaret Campbell, walking sticks; Cora Chase, Author of several books of poetry, edible weeds, and life histories; Corwin Chase, print-maker and Author, including original prints dating back to 1927 and a recently printed book titled "Teepee Fires", a collection of ventures in teepees and life experiences; Michael Dupille, surrealist watercolorers and graphic designed T-shirts; Janet Gormly, weaving; Richard LaLonde, art glass; Reni Moriarity, pottery; Melinda McGraw, Ukranian Dyed Eggs; Pat Rutledge, Batik; Rivka Sweedler, weaving; and Patsy Werner, pottery. For information, call 884-3873.

A BETTOR at the Charles Town race track accidentally destroyed ten winning tickets worth \$710. A claim was made and the West Virginia attorney general's office, asked to rule on the case, said: "In 1849 in the gold fields of California there were uttered words of wisdom by the noted Chinese philosopher Wong Chin, who gave to the legal world that immortal maxim, 'No tickee—no laundlee.'"



COUNTRYTM

FIREPLACE CONVERTER



Fireside Shop

Key Center

KC Corral

884-4248

NEW HOURS
THURS., FRI., SAT., 12-6
MORNING & EVENING APP.
884-2969

Key Center NATIONAL AUTO PARTS WAGNER SEAL BEAMS

4000	4651	6006
4001	4652	6014
	6052	

1.00 OFF
(Coupon)

MONTH OF NOVEMBER

Must have coupon to qualify

884-3307

Cash value 1/20th of 1*

1.00 OFF
(Coupon)

**MINUTES
CIVIC CENTER BOARD OCT. 8**

The meeting was called to order at 7:30 p.m. In the absence of the secretary, there were no minutes and Shirley Frame was asked to take the minutes. The treasurer's reports for both August was \$5509.55 and at the end of September was \$5212.45. It was MSC to accept the treasurer's report. The president reported that Sue Shattuck is obliged to resign due to illness in her family and that Lenore Jameson will be the new treasurer.

Tom Van Slyke reported that skating has started and has gone well. Bingo presented a check for \$ 1000. This is the first check this year since they needed to purchase new equipment. Sally reported that she must give up call back at Bingo because of the smoking and Shirley Frame and Betty Beale both said they would help some of the time. Thelma Klein is to check with Carl and Lucy Breitspecher to get the labels on the Newsletters for subscriptions so that they can go out with the rest of the general mailing and save us postage.

The Halloween Party will be Thursday October 29 and it was voted to allow Penny \$ 20.00 for prizes and supplies. Edythe Johnson reported that 56 reservations had been made for the flea market. The Arts and Crafts Fair will be on December 5 and there will be a meat raffle, plus a bicycle raffle for the children.

New Year's Eve Ball -- it was voted to keep the price at \$ 25.00 per couple. Thelma English will be the caterer and Shirley Olson will take the reservations. We still need chairman for the decorations committee and for clean up.

Progress is being made on the remodeling with 6 persons having checked it bidding on the drafting of plans.

A proposed budget was presented to the group. It is a zero-balance budget and there will be further input and approval at the November meeting. A motion was made to keep membership fees at the same rate for the next year, seconded and carried. At our next

meeting we will discuss next year's finances further as we will know what the levy situation will be.

There will be a standardation of items sold at the concession stand for Bingo with only Ball Park Franks or a comparable product to be used. A discussion was held on painting of the building with repairs of dry rot, etc. and it was MSC that the Executive Committee go ahead with this if it can be gotten out of the funds available, perhaps by contracting on a monthly basis of payments.

The December meeting will be potluck for old and new members of the Board with their spouses on December 10 Mary Seidelman and Millie Niemann will chair this event. There will be a gift exchange with a limit of \$2.00.

The meeting adjourned at 9:05 p.m.

RESTRICT SUGAR FOR BETTER DENTAL HEALTH

**BY OLGA V. FUSTE'
COUNTY EXTENSION AGENT**

Why should too much sugar be avoided? Too much sugar increases the chance of developing tooth decay, says Olga V. Fuste', Washington State University's County extension agent.

It's estimated that Americans consume 130 pounds of sugars and sweeteners a year. Most of the sugar we eat comes from soft drinks, candy and desserts, not from the sugar bowl. Try these suggestions to help decrease your sugar intake:

- Use less of all sugars, including white sugar, brown sugar, raw sugar, honey and syrups. Claims that honey is better for you than other sugars have nothing to do with preventing cavities. Use of all sugars should be limited.

- Eat fewer foods containing sugars, including candy, soft drinks, icecream, cake and cookies. Frequent snacks of sticky candy or dates or daylong use of soft drinks can cause extended exposure to the cavity-producing effects of sugar. These foods should be eaten only occasionally, followed by immediate brushing and flossing of the teeth.

- Eat fresh fruits or fruits canned in natural juices or light syrup. Fruits canned in heavy syrup contain large amounts of sugar and many added calories. (One cup of sliced peaches packed in water contains 76 calories, opposed to 200 calories in a cup packed in heavy syrup.)

- Read food labels for clues on sugar content. Many products like breakfast cereals, catsup, flavored milks and ice cream contain large amounts of added sugars. If sugars such as sucrose, glucose, maltose, dextrose, lactose, fructose or syrups are listed first, then the product contains a lot of sugar.

Obviously there is more to healthy teeth than avoiding sugars. Careful dental hygiene is very important, too.

Most importantly, though, reducing the frequency of sugar intake as well as the amount is the key to lowering the risk of cavities and maintaining good dental health.

Vaughn Community Church

"The Chapel By The Sea"

Worship With Us!

SUNDAY EVENING SERVICE
6:30 P.M.
SUNDAY SERVICE
9:30 AND 11:00 AM

DICK BAUER, PASTOR
884-2269
NURSERY CARE PROVIDED...

Greetings...
**ON
THANKSGIVING**

**35
Booths**

... Handcrafted items, paintings, Christmas Decorations, Lingerer, Toys, Pottery, Quilts, Flower Arrangements, and many More. Pre-Christmas Shopping **PREVIEW**

Firday evening, Nov. 20, 6 to 9. A special showing of booth merchandise. Refreshments. \$5.00 donation.

Sunriver Weekend
... plus \$300 fun money awared at 4 p.m. Sunday, Nov. 21.

Hourly Door Prizes
Saturday and Sunday
Hours: Saturday, 10 to 6
Sunday, Noon to 6

Food and Soft Drink Booth

**Gig Harbor
Christmas
Fair**

Nov. 20, 21 and 22
Fishermens Civic Club
on Burnham Drive

NINETY YEARS YOUNG

Charles W. Glasson celebrated his 90th birthday on September 2nd at a family party in his new home at Vaughn.

Charlie, as he is know to his friends, was born in 1891 and raised in Redruth, Cornwall, England. As a young man he was an outstanding soccer and rugby player and still enjoys all sports on T.V.

At the age of 21 he left England and settled in Kellogg, Idaho. There he met and in 1919 married Iva Nell Hicks. They produced 3 daughters, Mary (Mrs. E. Knapp), Hazel (Mrs. Ralph Kingsbury) and Joyce (Mrs. O. Morse).

Charlie worked for the Bunker Hill & Sullivan Mining Co. as carpenter shop foreman for many years. He was organist for the Kellogg Episcopal Church and also donated many years to the Y.M.C.A. as time-keeper for the young men's prize fights.

He moved his family to Longbranch in 1935 because it was so like his Cornwall Coast. He joined them in 1942 when he was called to the Bremerton Navy Yard during the war.

The Longbranch Church received many donated hours during its building and many more hours as organist from Charlie after it was finished.

Pops, as his family call him, has 6 grandsons: Ron, Larry and Wayne Kingsbury; Robert, Rick and Randy Knapp; and three granddaughters: Diann Evans, Connie Cameron and Debbie Odoardi, and 14 great-grandchildren.



(42) SORE THROAT

A sore throat can occur as a result of infected tonsils, strep throat, or can be viral like colds or flu. In the treatment of a sore throat due to a cold or flu, gargle with warm salt water. There is nothing that can cure the cold or flu but rest will help, as well as fluid and medication to relieve pain.

Strep throat is caused by the same toxin as that which causes scarlet fever. Diagnosis by a doctor is necessary to determine if it is strep throat and treatment will consist of penicillin.

When the tonsils become infected over and over again, this would indicate removal of the tonsils but this does not mean that all sore throats will be eliminated. Other types of sore throat may occur.

Coming Up Nov. 7

For ALL Telephone Utilities customers in the Gig Harbor and Key Peninsula areas:

On November 7 the most significant service improvement you will experience are:

1. Direct Distance Dialing facilities have been doubled to accommodate heavy calling volumes originating in the Gig Harbor/Key Peninsula areas.
2. Swiftens of call processing.
3. Direct long distance calling routes to Seattle, Portland, Tacoma and Port Orchard.
4. Direct distance calls from all exchanges will be dialed as follows:
Inside the 206 area, Dial 1 then the seven digit number. (The two-number access number will be eliminated).
Outside the 206 area, Dial 1, then the area code, then the seven digit number.

For Example:

To call Seattle or Tacoma: Dial 1 and 7 digit number. To call Chicago: Dial 1-312 (area code) and 7 digit number.



**Telephone Utilities
of Washington, Inc.**

PENINSULA SPORTS BOOSTER NEWS

The Sports Boosters Club of Peninsula High School has just about completed a busy Fall schedule, and will soon start concentrating on the winter sports schedule of boys' and girls' basketball, wrestling and boys' swimming. The booster club is composed of parents and other persons interested in the sports program at Peninsula High School. Their purpose is to promote and give aid to all sports at Peninsula. Some of their activities this Fall have included providing meals for the football unity camp and before away games, cleaning the stands after home games, and organizing the football bowl-a-thon and providing scorekeepers for bowlers. In the past they have also provided warm-up suits for volleyball, rain gear for girls' soccer and some wrestling gear. The boosters also will be giving scholarships to a selected boy and girl athlete at the end of the school year.

Membership in the Peninsula Booster Club is \$5.00 per family (\$2 of which goes to the scholarship fund) and can be obtained at any meeting or most Peninsula sporting events. Meetings are held at 7:30 p.m. on the third Tuesday of each month in the Peninsula High Library. One or more of the coaches will be available at the meetings to provide information about their sports program and answer questions. The next meeting will be Nov. 17. For further information please contact Mike Tovey, 884-3878 or Mike Pickett, 858-3681.

"INTERNATIONAL GOURMET CATERING SERVICE"

SUPERIOR FOREIGN & DOMESTIC CUISINES

PLAN AHEAD FOR THE HOLIDAYS

884-3365

Weekly HEALTH TIP

(28) **INSOMNIA**

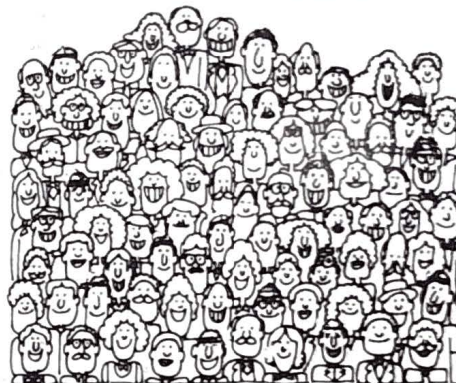
The inability to sleep is usually due to worry, fear, excitement, or any strong emotion. Other factors may include caffeine, excessive fatigue, not enough exercise, or overeating before going to bed. The loss of sleep itself is relatively harmless, it is the worry over it which causes trouble.

There are some things which can be done to induce sleep. Moderate exercise especially in the fresh air is helpful, avoid caffeine if it bothers you, also avoid overeating. Drinking warm milk before going to bed may be helpful. And above all, don't worry, if possible! Remember some people need less sleep than others. Sleeping pills, under a doctor's orders, may be a helpful temporary measure but it is best not to rely on them.

Compliments of
Key Center Drug



WE'RE VOTING TOGETHER



"YES" November 3
Key Peninsula Park & Recreation District
Maintenance & Operation
Levy — \$89,000
(45¢ per \$1,000 assessed value)

SUPPORTED BY

- | | | |
|--------------------------|--------------------------|---------------------------|
| Jean & Kathy Armstrong | Mr. & Mrs. Mike Harrison | Elmer & Elsie Olson |
| Rosemary & Tom Arnold | Diane & Larry Hawkins | Mr. & Mrs. Jim Penfield |
| Mr. & Mrs. Jim Arnold | Vickie Henschel | Robert & Aida Prichard |
| Ruth Bramhall | Mr. & Mrs. Art Hinzman | Bea Pruski |
| Ann Marie Barbee | Jean & Hugh Humphreys | Phil & Lynn Radcliffe |
| Jerry & Diane Barnett | Rod & Sandy Johnson | Rich & Linda Rimbach |
| Randy & Sharon Carr | Mr. & Mrs. Russ Kilcup | John & Sandy Robinson |
| Mrs. Jackie Curtis | Brad Lang | Mr. & Mrs. Earl Ruppert |
| Mr. & Mrs. Roy Danforth | Bob & Jo Lanigan | Brint & Jeanne Sagie |
| Mike & Don Davis | Bob & Loretta LaRue | Mr. & Mrs. Oskar Schock |
| Charles & Sandy Diedrich | Dick & Linnea Lawson | Bob & Rucile Schottland |
| Heather Dudley | Steve Lawson | Mr. & Mrs. Med Schwensen |
| Ray & Francis Durward | Larry & Kathy Lunke | Joe Severson |
| Wally & Cynthia Endicott | Ruth & Roy Madsen | Walt & Norma Smith |
| Mr. & Mrs. Duane Fleming | Penny & Mel Manley | John & Pat Steiner |
| Wayne & Avon Gay | Pete & Janet McIntyre | Mike & Joyce Tovey |
| Donn Gebb | Harry & Linda McWhirter | Mr. & Mrs. Tom Van Slyke |
| Dick & Golda Glaser | Don & Judy Mills | Rev. Ed & Marian Wagner |
| Pat & Don Greetham | Mr. & Mrs. Rod Mitchell | Dave Wheeler |
| Janet & Richard Gormly | Greg & Sandy Moore | Mr. & Mrs. Dick Wilson |
| Ken Gormly | Del & Sandy Newhouse | Rhys & Ruth Wood |
| David & Ann Marie Hahn | Jack Niemann | Penny & Russell Zimmerman |
| | Don & Shirli Olson | |

Key Peninsula Civic Center - Marian Wagner, Pres.
Key Peninsula Athletic Assn. - Mike Harrison, Chrm.

Politics: the art of looking for trouble, finding it everywhere, diagnosing it incorrectly, and applying the wrong remedies.

GROUCHO MARX

WHAT IS MY PROPERTY WORTH

ONE OF THE MOST FREQUENTLY ASKED QUESTIONS IN REAL ESTATE TODAY.

FOR YOUR FREE MARKET ANALYSIS, FILL IN THIS COUPON AND MAIL TO: COLONY REAL ESTATE, INC., P.O. BOX 336 VAUGHN, WN. 98394 OR CALL: 884-3304

FREE

YES, I WOULD LIKE A COURTESY MARKET ANALYSIS WITH NO OBLIGATION TO ME.

FREE

NAME

PHONE #

PROPERTY ADDRESS

"\$609 TO HAWAII"

DEPARTURE DECEMBER 5

HURRY

AND GET YOUR RESERVATION BEFORE IT'S BOOKED UP!

7 NIGHTS & 8 DAYS
HOTEL ACCOMMODATIONS
ROUND TRIP AIRFARE w/ CHAMPAGNE
AVIS RENT-A-CAR
ON THE BIG ISLAND OF HAWAII

ALSO DISCOUNTED FARES TO CALIFORNIA

Port Orchard Travel Service

738 Bay Street

Port Orchard, Washington 98366

Sandy Foster
Travel Consultant

(806) 884-3656

CALENDAR OF EVENTS

NOVEMBER

Key Peninsula Civic Center

1981

SUNDAY	MONDAY	TUESDAY	WEDNESDAY	THURSDAY	FRIDAY	SATURDAY
1 Lutheran Church Church School 9:30 Worship 10:30 am	2 Square Dance- 7-9pm	3 Bridge- GR 7:30 pm VOTE TODAY!!!	4 GAME NIGHT-Gym-7:30 pm Scouts Troop 213-7:15 pm, S. R.	5 KP Sen. Soc.-12-4 pm GR	6 Grange-6:30 pm GR Skating-6-9 pm; 9:30- 11:30 pm	7
8 Lutheran Church Church School 9:30 Worship 10:30 am	9 VFW and Aux. mtg- G. R. Square Dance- 7-9pm	10 Bridge- GR 7:30 pm	11 GAME NIGHT-Gym-7:30 pm Scouts-Troop 213-7:15 pm, S. R.	12 KP Sen. Soc.-12-4 pm GR	13 Lk. Minterwood:GR 8 pm Skating-6-9 pm; 9:30- 11:30 pm	14 Peninsula Bay Artisans Art Show-10 am to 5 pm- Gym
15 Lutheran Church Church School 9:30 Worship 10:30 am Peninsula Bay Artisans Art Show- Gym 12 noon to 5 pm	16 Peninsula Bay Artisans mtg.-G. R. 7:30 Square Dance- 7-9pm	17 Bridge- GR 7:30 pm	18 GAME NIGHT-Gym-7:30 pm Friends of Library-8 pm Scouts-Troop 213-7 15 pm, S. R.	19 Cootiettes-7:00 pm GR KP Sen. Soc.-12-4 pm GR	20 Grange-6:30 pm GR Skating-6-9 pm; 9:30- 11:30 pm	21 Square Dance-Gym-8 pm
22 Lutheran Church Church School 9:30 Worship 10:30 am	23 Square Dance- 7-9pm	24 Bridge- GR 7:30 pm	25 GAME NIGHT-Gym-7:30 pm Scouts-Troop 213-7:15 pm, S. R. Land Use Planning-7:30	26 Church-10:00 am	27 Skating-6-9 pm; 9:30- 11:30 pm	28 Twilight Dance Club 9 pm Gym
29 Lutheran Church Church School 9:30 Worship 10:30 am	30 Square Dance- 7-9pm					

