

**FREE  
Parking**

**Parade  
10:00 am**

**Bingo  
Noon - 4 pm**

**FREE  
Entertainment**



# Key Peninsula **PIONEER DAYS**

Non-profit Org.  
U.S. Postage Paid  
Vaughn, WA. 98394  
Permit No. 2  
Volume 3 Issue 1  
Circulation 30,000

**AUGUST 4  
1990**

Sponsored by **THE KEY PENINSULA CIVIC CENTER ASSOCIATION**

**Box Holder**

## Pioneer Days spreads Peninsula Goodwill

The August 4, 1990, Peninsula Pioneer Days Celebration offers a welcome alternative to the throngs of people cramming every square inch of Seattle and Tacoma for the Goodwill Games and venues.

Located on scenic Vaughn Bay, the Key Peninsula Civic Center has been home to Pioneer Days for nearly 20 years. Organized to commemorate our Northwest roots, Pioneer Days sees some of the most inventive parade floats and costumes in the Northwest.

The festivities begin at 10 am, with the annual Key Peninsula Business Association-sponsored parade, which originates in downtown Key Center then winds a mile down Highway 302 to the Key Peninsula Civic Center on picturesque Vaughn Bay. Opening ceremonies begin promptly at 11:30 am at the flag pole.

Pioneer Days boasts a new, larger animal arena, along with a permanent cement fishpond (40 ft x 12 ft) and the much gooier and improved Salatino Memorial Mud Pit for even more tug-of-war action by the Volunteer Fire Departments from Key Center, Gig Harbor, Allyn and Mason

Children's arts and crafts will be on exhibit inside the Civic Center, and the Ohop Valley Pioneer Farm exhibit will be set up in the gymnasium. Five dozen hands-on activities from eight learning centers will highlight food, toys, clothing, tools, canoe building and Native American and pioneer skills and crafts. A magnificent exhibition of tools will be on

display.

The Pioneer Days Junior Olympics offers games for kids age 12 and under in the new, enlarged arena. See arena events schedule on page 2.

Animals of all sizes and colors will be exhibited and judged from 1 pm to 3:30 pm. From aardvarks to zebras, cats to rats, and mice to louses, all are welcome to come for the show. Everybody wins something for their efforts.

The peninsula's best horseshoe

*Continued on p.12*

## Parade route outlined

The Key Peninsula Business Association is again sponsoring the Pioneer Days Celebration Parade. This promises to be the biggest and best yet. (They say that every year, and every year it keeps getting better.)

The parade will begin at the Fire Station in Key Center promptly at 10 am. Grand Marshals Henry and Eleanor Stock will lead the entourage of floats, individuals, animals, bands and various modes of transportation through Key Center. It will pass directly in front of Walt's Food Center, Sunnycrest Nursery and Key Western Hardware where the floats and costumed marchers will turn north on Highway 302, passing National Auto Parts, Huckleberry Inn and Key Center

*Continued on p.5*



*Headliners at Pioneer Days outdoor Big Stage entertainment, the Tacoma Banjo Club will play from 5 pm to 6 pm on August 4 at the Civic Center, Vaughn. Founded in 1985 with a membership of six, the group has grown to 32, ranging in age from teenagers to octogenarians. The popular group plays all over the Northwest and has appeared on television. This entertainment is free!*

## Local Grand Marshalls lead the Parade

Vaughn residents Henry and Eleanor Stock will be at the head of the 1990 Pioneer Days parade. The role of Grand Marshall is a fitting tribute to the Stocks, who are pioneers in their own right. They were born in this area and have resided here most of their lives and have either initiated or taken part in many of the local organizations and activities. Henry was born at Victor, served with the SeaBees in the South Pacific and then turned to commercial fishing for many years. Fire District 16, the Lions Club, Gig Harbor Chamber of Commerce, Citizens Against Crime, all have been recipients of his energy and commitment. He was promi-

nent on the Civic Center Board for many years, and in 1984 was chairman of Pioneer Days. Eleanor was born in Washtuca and served with the Medical Corps of the U.S. Army during WWII. She and Henry were married in 1946 and at one time she established a chiropractic office in Olympic Village. She is a long-time member of Vaughn Garden Club, has served on the Civic Center Board as secretary, worked on the staff of KP News in advertising, and is now active with Citizens against Crime and a staunch supporter of Henry in all his endeavors. Henry's latest project has been the building of a permanent Pioneer Days fishpond (see related story on page 12).

**Co-Sponsors:**



**Puget Sound Bank**  
THE HOME TOWN BANK

**Key Peninsula  
NEWS**

**Budweiser**

**KING OF BEERS.  
THIS BUD'S  
FOR YOU**

**KKMO**

**AM Radio Tacoma's  
1360 KC BIG BAND STATION**

## Pioneer Days Special Edition

Publisher:  
Key Peninsula Civic Center Assn.

Editor: Pauline Finn  
Writer: Rick Oldenburg  
Ad Sales: Mike Salatino  
Tabloid Layout: Pauline Finn

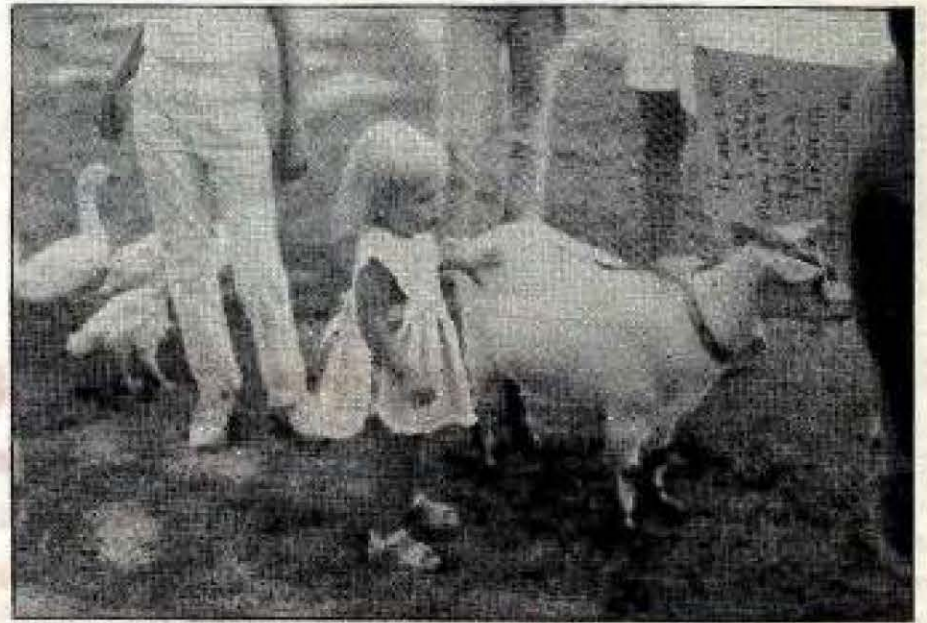
Generous support was also given by  
Megan Aprile and her staff.

## Kids Arts - Games - Watermelon

As in past years, kids arts and crafts will be on exhibit with judging provided for any and all categories. Ribbons will be awarded to all entrants, with classifications being First, Second and Third place.

Entries should be on display in the Civic Center Gymnasium before 10 am Saturday. Ruth Dudley is chairman for the event, but no registration is necessary.

Entrants may pick up their entry and ribbon after 5 pm on Saturday.



A young Peninsula resident enters her goat at the animal judging arena.

## Watermelon lovers love to eat

If you like watermelon, this contest is for you. Here's your chance to gorge on delicious, juicy, drippy, red, ripe watermelon.

A contest for younger eaters (12 and under) will be held right after the kids games in the new arena (about 12:30 pm). A second contest for ages 13 through adult will immediately follow the younger kids contest.

We supply the watermelon, you supply the appetite!!

(206)851-4696

active  
construction  
inc.

PO Box 191  
11302 Burnham Drive N.W.  
Gig Harbor, WA 98335

AC-TI-VC-1-164JL  
Utilities & Site Preparation

## Arena Events

12 Noon-1 pm	Children's Games	3:00 pm	Flags/Horses
1 - 1:30 pm	Watermelon Contest	3:30 pm	Dog Judging
1:30 pm	Figure Eight/Horses	4:00 pm	All other Animals
2:00 pm	Key Pole/Horses	4:30 pm	Animal Dress-up
2:30 pm	Pole Bend/Horses		

## Explorers provide security

Security on the grounds will again be provided by Washington State Patrol Explorer Scouts under the direction of Trooper Jim Sammons, Washington State Patrol.

The Washington State Patrol Law Enforcement Explorer program was set up through the Boy Scouts of America. It is a

voluntary career awareness program, providing insights into the State Patrol for young adults.

They participate in fund-raising events to defray the costs of attending Explorer academies, seminars and training activities.

The Explorer Post is open to all students with a 2.0 GPA or better, no drug/alcohol problems and a good driving record. If you are interested in the program, call Trooper Sammons at the Gig Harbor WSP office, 858-8800.



From Gig Harbor to  
the Key Peninsula,

## Telephone Utilities

is making a difference  
in the communities we serve.

Enjoy your  
visit to the  
beautiful Peninsula Country.



Call on your friends at Telephone Utilities:  
Residential and Business Service 851-8311  
Multi-line Business Systems 851-3030

## Peninsula Travel



A FULL SERVICE  
OFFERING:

WHERE CUSTOMERS ARE  
TREATED AS  
BEST FRIENDS.

851-9913  
Harbor Plaza 4920 Pt. Fosdick Dr. NW

- \* Business Travel Arrangements
- \* Vacation Travel Planning
- \* Instant Ticketing
- \* Computerized Reservations
- \* Boarding Passes & Seat Arrangements
- \* Rail-Hotels-Rental Car Service
- \* Ticket Delivery Service
- \* A Variety of Travel Accessories



## KEY WESTERN BUILDING CENTER

KEY CENTER



- \* PUMING FIXTURES & SUPPLIES
- \* ELECTRICAL EQUIPMENT & SUPPLIES
- \* TRUE VALUE HARDWARE & TOOLS
- \* PAINT - LUMBER - PANELING
- \* GARDEN SUPPLIES & EQUIPMENT
- \* HOUSEWARES & SPORTING GOODS

AREA-WIDE  
DELIVERY

OPEN MON thru SAT 8-5  
OPEN SUNDAY 10-3



884-2311  
or 884-3321

"Everything for the Do-it-Yourselfers and Professionals"



Competitors from a bygone Pioneer Days Horseshoe contest in action!

## You'll hear ringers!

The sound of steel against steel will be one of the many fun sounds you will hear August 4. Tell your friends and neighbors to pack up the kids and head for the Key Peninsula Civic Center. You or your neighbor's name could be added to the winner's plaque for our annual Pioneer Days Horseshoe Tournament.

Bring your best partner, or try someone new. Dick Messing, two-year defending champion, will be there to try to retain his title for a third straight year. Teams from Belfair, Allyn, Victor, Burley, Ollala, Rosedale, Wauna and Gig Harbor are challenged to bring anyone who might have a chance at unseating the champ.

This is a round-robin tournament which begins at 12 noon beside the Beer Garden, and is expected to draw more than the 9 teams that paired up last year. But, we always want more, so come on out and join the fun. Sign up behind the Beer Garden immediately following the opening ceremonies at 11:30 am on August 4, or call chairman Tim Kezele at 884-4538. There is a \$3.00 entry fee.

A perpetual plaque was installed last year on the wall of the Civic Center's Whitmore Room along with other memorabilia commemorating the winners of this test of skill. Firstplace winners will each receive a trophy and awards will be presented to the top three teams.

You need not be an expert to enter; all interested participants are welcome.



## Boo! and hiss! "The Eight o'clock Kiss"

The Key Peninsula Players, a newly organized amateur theatrical group, will present their first play - a melodrama called "The Eight o'clock Kiss" - at 1: pm on the main stage on the Civic Center lawn at Pioneer Day, Saturday, August 4.

The 20-minute play was written, and is directed, by Ann Sanders of

Longbranch, and has all the ingredients necessary to make the audience boo and hiss the villain and cheer on the fair damsel and the hero. There is an orphanage (somewhere on Key Peninsula) and a prize of money and a kiss from the lovely Melody Meyers for the making of the most wooden toys for the orphan children. Mayor Baldwin Brown (Joe Aprile) conducts these proceedings, Felix Bailey is the villain (played by Lloyd Boyd), Miles Fortright is the hero (played by Jerry Benoit), and Melody Meyers (at present being played by Ann Sanders) is the heroine.

Zac Schramek is the announcer, and other supporting parts are played by Lee Stiles, Amy Adams, Andrea VanSlyke, Daryn McKeown, Sandra Diedrich, Leah Martin and Amber White. "Orphans" include Leah Aprile, Cristina and Kimberley Stanfill, and others.

Ann Sanders is part of the drama scene at Peninsula High School and has put together a very entertaining short melodrama, so be sure to be on hand at 1 o'clock on Pioneer Day to supply the background noises from the audience that are part of the fun of an old-fashioned melodrama.

# THE CHECK IS IN THE MAIL.



## \$2,000\* CASH BACK FOR MOBILE HOME BUYERS

If you're in the market for a mobile home your timing couldn't be better. A free phone call to 1-800-242-CENT will bring you a check good for \$2,000 cash back on the purchase of a qualifying Super Good Cents manufactured home.

And that's only the beginning of your savings! Super Good Cents means your new home is built to a higher set of standards, so it's cleaner, quieter, more comfortable and costs less to heat. Super Good Cents construction may reduce your



INSIST ON IT!

monthly heating bills by as much as one-half. Month-after-month, and year-after-year you'll have more money left over to put into the things you really want.

So call now, toll free 1-800-242-CENT, to get your \$2,000 Cash Rebate information kit and the name of a Super Good Cents manufactured home dealer near you. Call today and your check will be in the mail!

# 1-800-242-CENT

\*Actual rebate may be higher! Rebate qualification and amount will be determined by the local electric utility where the home will be sited.

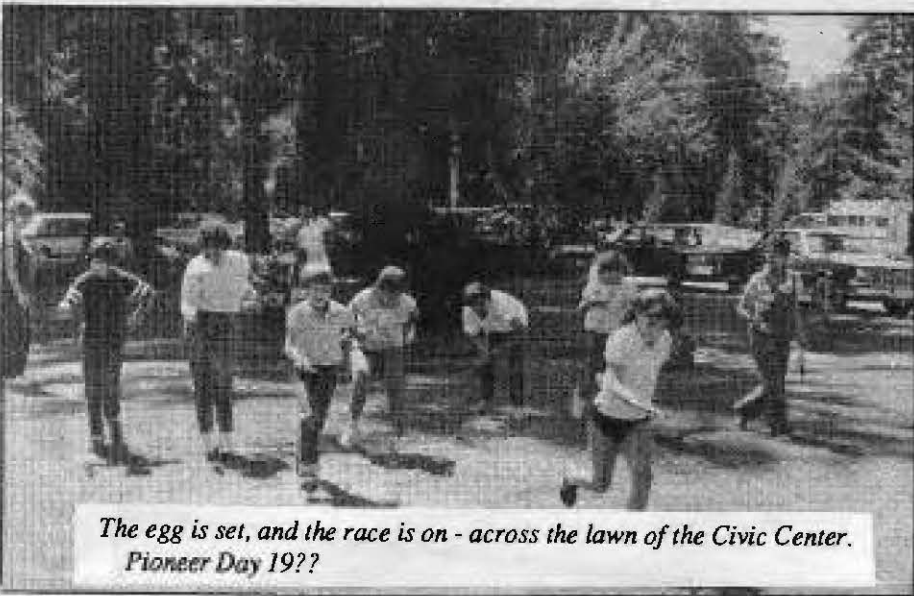
CO-SPONSORED BY PENINSULA LIGHT COMPANY AND THE BONNEVILLE POWER ADMINISTRATION

## KP NEWS-stand at Pioneer Days



Official Sponsor

Look for the Key Peninsula NEWS booth at Pioneer Days. Come by and say hello, ask questions or let us know how we're doing. We'll also have those nice "I read the Key Peninsula NEWS" sweats and t's for sale.



The egg is set, and the race is on - across the lawn of the Civic Center. Pioneer Day 19??

## Kids Games ... Win BIG!

Attention all kids ages 12 and under. On your mark... Get set ... WIN! Yes, everyone is a winner at the Pioneer Days Junior Olympics. Babies crawl, toddlers toddle and everyone else runs, throws, hops, skips or jumps their way to victory.

There are prizes for all plus a blue ribbon for each first place winner. Come

throw an egg at your best buddy or dive for candy in our haystack. See how far you can sail an airplane or just how **BIG** a bubble YOU can blow.

Grab your friends, your folks and your relatives and head right for the new, enlarged arena at 11:30 am sharp. Don't be late or you'll miss some of the fun!

## Local business donates raffle prize

The Civic Center Association wishes to thank the generous donation from Dale and Tom VanSlyke, owners of Vaughn Bay Lumber, for their continued support of Civic Center activities.

Vaughn Bay Lumber has generously made available a truckload of logs which will be awarded as second prize in the Pioneer Days Raffle. That's between 4-5 cords of wood, which will be split, delivered and stacked anywhere within 20 miles of the Civic Center (a slight delivery fee will be charged outside the twenty-mile radius). This prize is worth from \$300 to \$400 depending on where you live. Thanks again, guys!

Serving the Puget Sound from Tacoma since 1922

## KKMO 1360 Radio

featuring

The Best  
of the Big Bands  
and Your  
Favorite Singers



Official Sponsor



1360 AM



## Clavinova loves music, man!

Oh, so you're like me and don't know a clavinova from a left overblatz. Well, a Yamaha clavinova is an electric piano that can be amplified for a band or played acoustically.

Our thanks to Key Peninsula resident Hank Clinton (Clinton's Music House on Tacoma Avenue in Tacoma) for loaning us an 88-key regulation keyboard clavinova for our entertainment segments.

You will be able to see this beautiful instrument and hear its perfect tones all day Saturday, August 4, on the giant stage in front of the Civic Center.

### CLINTON'S MUSIC HOUSE



YAMAHA - LOWREY - ROLAND

Pianos, Digital Pianos, Clavinovas,  
Organs, Keyboards, Accessories.

New - Used - Rentals

"FAMILY OWNED SINCE 1898"

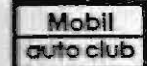
2301 Tacoma Ave. So., Tacoma - 627-8288

## PAUL'S TOWING

24 Hours

Licensed &  
Bonded

857-2181



Serving  
the  
Peninsula  
Area Since  
1961

14317 Purdy Dr. NW, Gig Harbor, WA 98335



## CHARBONEAU CONSTRUCTION AND SUPPLY

LANDSCAPING MATERIALS & CONTRACTORS SUPPLY

- Rockery Rock
- Concrete Products
- River Rock
- Bark
- Railroad Ties
- Fill Pit Run
- Building Supplies
- Sandy Loam, 3 way mix
- Crushed Rock
- Culverts
- Screened Topsoils

### EXCAVATING SERVICE



DEMOLITION

- Road Building
- Grading
- Foundations
- Land Clearing

- Developments
- Underground Utilities
- Site Preparation
- Stump Hauling

• Septic Tank Installations



TRUCKING

JEFF CHARBONEAU-Owner

857-5125

WE DELIVER

RANDY G.HOOK-Manager

11612 Hwy 302 NW GIG HARBOR

YOU HAUL

- RADIO DISPATCHED -

- OPEN SATURDAYS

YARD LOCATED 5 MILES SOUTH OF PURDY ON HWY 302

Lic #023-01-JE-FF-CE 22018

## We Salute The Pioneers of Key Peninsula

Be involved in your community, support  
the Key Peninsula Civic Center Association

The Peninsula

# GATEWAY

The Community Newspaper Serving The Key Peninsula



Viking Ship, winner of the 1988 Pioneer Days Parade Sweepstakes, entered by The Sons of Norway, Bremerton. KP NEWS photo by Lee Stiles.

**Continued from p.1**  
**....more about the Parade**

Tavern on the one-mile trek downhill to the Key Peninsula Civic Center, reaching the Center at 11:30 am.

Nestled in the tall firs at the end of picturesque Vaughn Bay, the Civic Center has been the site of nearly 20 Pioneer Days Celebrations. Last year over 50 entries snaked along the parade route, and this year looks like there might be even more.

The K.P. Business Assn's Betty Jopp is coordinating this year's parade. Betty has put in many hours organizing the event and her hard work is paying off with another memorable parade shaping up.

Don't be left out ... if you don't want to be in it, at least come and cheer on those who are. They are the brave and intrepid souls who let nothing stand in their way when it comes to having a lot of good, clean fun.

## Pioneer Days 1990 Raffle

First prize in the Pioneer Days Raffle is a trip for two to Puerto Valarta, Mexico. You'll enjoy one week of solid fun-in-the-sun complete with airfare and ground transportation to and from your beach-front hotel. Tickets are only \$1.00 each and may be purchased from Key Peninsula organizations, or all day August 4 during the Pioneer Days celebration on the Key Peninsula Civic Center grounds in Vaughn.

Second prize is a truck-load of logs, cut, split and stacked at your home within a 20-mile radius of Vaughn. A small delivery charge will be made beyond this radius.

Third prize is a brand-new VCR. Put the convenience of a movie theater into your home with this beautiful VHS format machine.



## 65 Years of Service

The magic of electricity came to the Key Peninsula to bring a modern mode of living to the members who built transmission lines to their homes and their farms and businesses.

In late 1925 lights were lit and electricity became a long awaited way of life.

During the 65 years electricity has been an important factor to meet the growing needs of the progressive community.

Today Peninsula Light makes the following services available:

- Low Income Energy Assistance program
- Average Payment plan
- Super Good Cents program
- Residential weatherization program
- Electric Safety Demonstration programs



## PENINSULA LIGHT COMPANY

Member Owned Since 1925

Business Telephone 857-5950  
Outage Telephone 857-5955



## "Quality Contemporary Cooking in a Quiet Country Setting"

9013 KPHN, Key Center  
8 miles south of Purdy Bridge on Rt.302

Now Serving Lunch

For Reservations: 884-4403

Wed-Sun Dinners: 5 pm  
Lunch: 11 am  
(closed Mon & Tues)

*Tired of just Eating Out...  
then try Dining Out!*

Bart Ripp, The News Tribune, Nov.10,1989

"Worth a drive from anywhere in the lower 48. Generous portions of four-star food at reasonable prices. Chef Dale Towry's nightly specials - a little Italian, a little Greek, a little Continental, some Midwestern steakhouse, a lot of Northwest - are extraordinary. This gem is a Puget Sound treasure."



10-4

Thurs., Fri., Sat.

## The Angel Guild Thrift Shop

Donations from KP residents  
For benefit of KP residents

Located in the K.C. Corral  
Key Center

884-9333

## SNODGRASS FREEMAN ASSOCIATES, AIA

**AN ARCHITECT IS A LUXURY I CAN'T AFFORD**

**NOT TRUE.** Architects' fees are not just added on top of your project costs. They can save you money in many ways.

Architects can oversee your budget, and negotiate to get the best materials and the best workmanship at the lowest price. They can reduce heating bills by finding a way to make a building save energy. They can turn a difficult lot - with a good price - into a successful building site. They can spend time planing so that, as your ideas evolve, they can make changes you want on paper - much cheaper than later, when construction is underway. They can make sure bids for construction are based on exactly the same requirements, so you really do get the lowest price. They can find parts of the project you can do yourself, or show you how to act as your own contractor.

KENNETH SNODGRASS

DAVID FREEMAN

ARCHITECTURE  
COMPUTER DESIGN,  
PLANNING &  
CONSULTING

3206 50 St.Cl. N.W.  
SUITE 210  
GIG HARBOR, WA. 98335  
(206) 851-8383

Property Lines Construction Staking Subdivision  
Topography Estimates Lot Surveys Platting  
Lot Line Revisions Land Use Planning

## Thornton Land Surveying, Inc.

WILLIAM G. THORNTON, Pres.

Professional Land Surveyor  
Lic. #10238

BUSINESS  
Ph. 858-8106  
PO Box 249  
FAX 858-7466

Gig Harbor  
Washington  
98335



**LESTER'S**  
Sporting Goods

Hours:  
Mon - Fri 10 - 7  
Sat 9 - 6  
Sun 11 - 5

**Great Fall Fashions  
Now In!!**

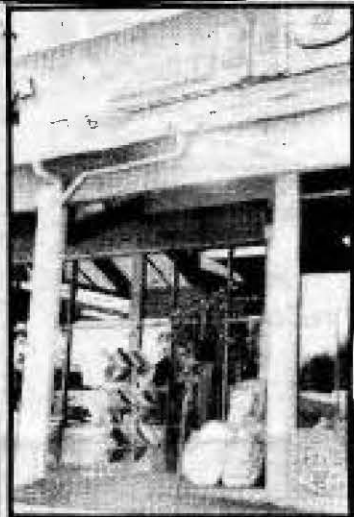
Fall Sport Special  
10% off sport shoes

Soccer Football Cross Country

Featuring: **Nike, Patrick, Asics,  
Diadora & More!**

**20% OFF**

T-Shirts  
Sweatshirts  
& Pants



HAND PAINTED  
Bedspreads and Comforters

Choose from over 30 unique designs  
each one a work of art

**HARBOR HOME FASHIONS**  
858-2521

*Nicholson's*  
MENS CLOTHIERS

official sponsor of the

"Good Whale  
Games"

Open 10 to 7... Mon. - Thurs.  
10 to 6... Fri. & Sat.  
11 to 5... Sunday  
VISA • MC • DISCOVER

851-8350



**Ken Walker**  
Jewelers

**We're your diamond store.**

- \* INSTORE CUSTOM DESIGN DEPARTMENT
- \* INSTORE EXPERT REPAIR DEPARTMENT
- \* INSTORE G.I.A. CERTIFIED APPRAISALS



HOURS: MON - THURS 9:30 - 8:00 PM  
FRI - SAT 9:30 - 6:00 PM

VIDEO ETC  
851-7005

Only  
**\$12.98\***  
AFTER REBATE  
FROM MONEY!



PRE-ORDERS DUE:  
August 20, 1990

**WE'RE UNLEASHING  
THIS YEAR'S TOP DOG!**

A DON BLUTH FILM  
**All Dogs Go To Heaven.**

From the Director of  
AN AMERICAN TAIL, THE LAND BEFORE TIME  
and THE SECRET OF NIMH

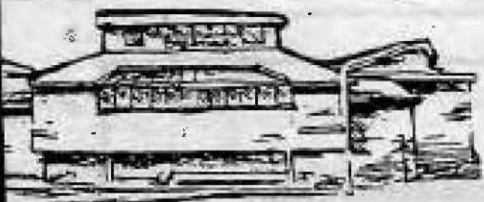


TM © 1989 Goldcrest & Sullivan Bluth Ltd.  
ALL OTHERS GO TO HEAVEN - 1989 United Artists Features, Inc. All Rights Reserved  
\*Suggested list price \$24.98. Offer not available in Canada where price is slightly higher. Complete rebate details inside package.



- A. Ernst Store
- B. Pay 'N Save
- C. Washington State Liquor Store
- D. Peninsula Computer
- E. Bowl of Cherries & Gifts
- F. Harbor Home Fashions
- G. Subway Sandwich Shop

- H. Gig Harbor Florist
- I. Domino's Pizza
- J. Schuck's Auto Supply
- K. Fashions First
- L. Video Etc.
- M. Nicholson's Mens Clothiers
- N. Lester's Sporting Goods



# HARBOR PLAZA



## Take home a taste of the world

**A European Deli**  
 ■ Fresh pasta, made everyday ■ Over 150 cheeses from every nation ■ A great selection of fresh subs and sandwiches  
 ■ Enjoy our 70-item hot soup and salad bar  
 ■ Pick up a MicroMeal from several tempting

entrees for a quick, delicious meal at home or the office ■ We also cater!

**A World-Class Bakery**  
 Freshly baked cookies, French croissants and bagettes, Italian rolls, Greek pitas, Jewish bagels and scrumptious

gourmet breads are created every morning using our own recipes.

130 local and international beverages.  
 Beer, beer, beer from everywhere! A selection of brew that certainly won't disappoint you.

### Bag & Save Foods

Open 24 Hours • Full-Service Deli • Bakery  
 5010 Pt. Fosdick Drive NW in Harbor Plaza, Gig Harbor 851-3900  
 4209 Wheaton Way, Bremerton • 1009 Monroe Street, Enumclaw



**Peninsula Travel**

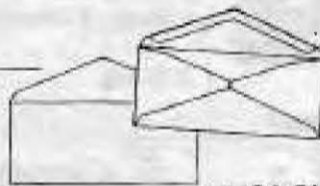
*Where Customers Are Treated as Best Friends.*  
 A FULL SERVICE AGENCY OFFERING

- Business Travel Arrangements
- Vacation Travel Planning
- Instant Ticketing
- Computerized Reservations
- Ticket Delivery Service
- Boarding Passes & Sea Arrangements
- Rail-Hotels-Rental Car Service
- A Variety of Travel Accessories

**851-9913 HARBOR PLAZA**  
 4920 Pt. Fosdick Dr. NW., Gig Harbor

## MORFORD'S HALLMARK - OFFICE SUPPLY

### Benchmark White Wave Envelopes



ITEM	DESCRIPTION	REG. PR.	Sale Price
BEN 07-412	#10 Plain, white	11.70	7.49
BEN 07-463	#10 Plain, white	23.00	8.69

### K&M Standard Ring Binders



ITEM	DESCRIPTION	REG. PR.	Sale Price
K&M K311-05	11x8 1/2", 50 capacity	4.25	1.89
K&M K311-10	11x8 1/2", 2" capacity	4.25	1.89
K&M K311-15	11x8 1/2", 1 1/2" capacity	6.50	3.29
K&M K311-20	11x8 1/2", 2" capacity	8.50	3.75
K&M K311-25	11x8 1/2", 3" capacity	12.00	6.39

Mon-Fri 9 - 8  
 Sat 9 - 6  
 Sun 11 - 5

851-8369

Call us for FREE catalog



## Fashions First

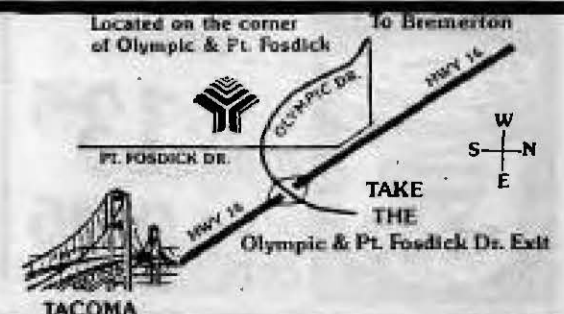
Latest Fashions, Name Brands, great prices all on this side of the bridge!

851-9612

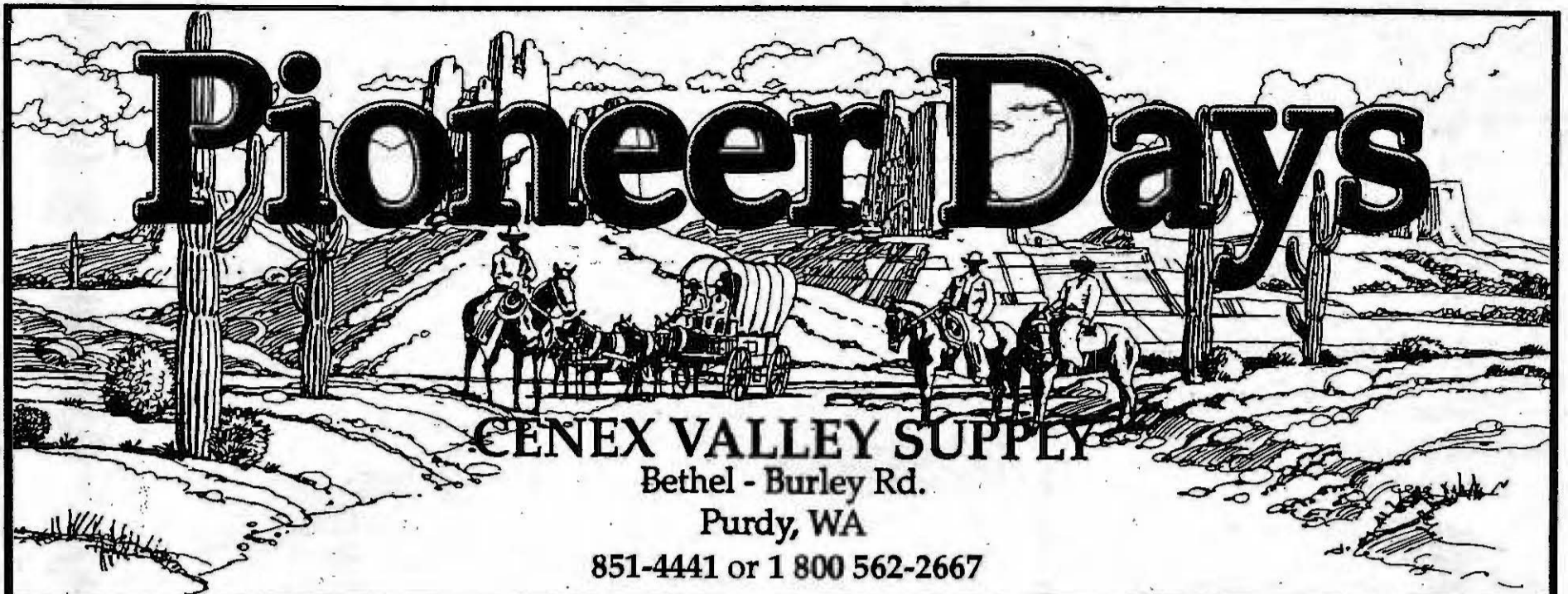
- O. Morford's Hallmark & Office Supply
- P. Harbor Art
- Q. Prescription Optical
- R. Peninsula Travel
- S. The Harbor Cutter Ltd.
- T. Ken Walker Jewelers
- U. Bag & Save Foods



# HARBOR PLAZA



# Pioneer Days



**CENEX VALLEY SUPPLY**  
Bethel - Burley Rd.  
Purdy, WA  
851-4441 or 1 800 562-2667





**Command Puppy Food**  
Command Puppy Food is a balanced blend of the proper amounts of proteins (27%), fats, minerals and vitamins. Command Puppy Food meets or exceeds the minimum nutritional levels established by the National Academy of Sciences.  
25 lb. bag **9<sup>95</sup>**



**Command Plus Dog Food**  
Command Plus High Protein (25%) Dog Food is especially formulated for dogs needing extra protein and fat such as growing puppies, pregnant or lactating bitches and hard working dogs.  
40 lb. bag **12<sup>95</sup>**



**Command Dog Food**  
Formulated with top quality ingredients to produce a very palatable, highly nutritious complete dog food that meets or exceeds National Research Council requirements. 21% protein, 9% fat.  
50 lb. bag **11<sup>95</sup>**



**Command Cat Food**  
Command Cat Food is a well balanced, high protein (30%), complete diet which meets all of the nutritional needs of your cat for growth and maintenance and can be fed wet or dry.  
20 lb. bag **8<sup>95</sup>**

## Laundry Detergent

Economical, Super Concentrate,  
Biodegradable



**Orange Blossom**  
20 lb.... **15<sup>49</sup>**  
45 lb.... **31<sup>95</sup>**



**Country Fresh**  
20 lb.... **13<sup>95</sup>**  
45 lb.... **27<sup>95</sup>**

## Refillable Propane Tanks

1 Gallon Size  
**19<sup>95</sup>**



2 1/2 Gallon Size  
**20<sup>95</sup>**

5 Gallon Size  
**21<sup>95</sup>**

## Kerr CANNING JARS



12 Pack, Pint Regular Mouth Mason Jars #503	<b>3<sup>99</sup></b>
12 Pack, Pint Wide Mouth Mason Jars #518	<b>5<sup>49</sup></b>
12 Pack, Quart Regular Mouth Mason Jars #505	<b>4<sup>79</sup></b>
12 Pack, Quart Wide Mouth Mason Jars #519	<b>6<sup>19</sup></b>



A MEMBER OF THE SEARS FINANCIAL NETWORK

**COLDWELL  
BANKER**

**PRESENTS!**

*Galaxy of Homes*

**AUG. 17 through  
SEPTEMBER 9  
AT PARKVIEW POINT  
1st GIG HARBOR EXIT**

Interest rates are unstable, construction costs are escalating! We can deliver a home in 3-6 months at today's price. Visit our on-site sales office any day from 11-7. For information call 851-9988.

**Pioneer  
Farm visits  
Pioneer Days**

The traveling exhibits of the Pioneer Farm from the Ohop Valley at the foot of Mount Rainier, will visit the Pioneer Days Celebration on August 4. Five dozen hands-on activities from eight learning centers will create a total environment inside the gymnasium, highlighting food, toys, clothing, tools, salmon life-cycle and legends, canoe building, Native American and pioneer skills and crafts, and a magnificent exhibition of working tools that helped with the daily chores way back when.

This show features learning centers made up of artifacts and exact replicas to provide each person with the opportunity to experience history through the five senses. This exhibit compares the lifestyles of the pioneers and the Native Americans who lived side-by-side around Puget Sound 100 years ago.

All ages may experience this exhibit FREE. You may help make apple cider on

an authentic cider press, children can dress in pioneer or Indian wardrobe while learning to churn butter or weave a cattail mat. You may have a new appreciation for modern appliances after using a scrub-board or Saddle iron. Opportunities will abound to make arrowheads, weave, spud a log or use a Bucksaw.

You'll find a new appreciation for our 100 year-old heritage and the hardships our forbears endured when you "walk through the past" at Pioneer Days.

**Parking  
and  
Entertainment  
are  
FREE  
at  
Pioneer Days**

**IF YOU WANT TO BUY OR SELL A HOME, YOU'LL FIND SHOREWOOD AT THE "KEY CENTER" OF THINGS.**

We're more than just specialists in our local real estate market. We're your neighbors, who share your interest in the community.

We're involved in civic and charitable groups, school elections and a lot more. We want to earn your trust through professional service that's as friendly as it is uncompro-

mising. For your FREE MARKET ANALYSIS - call 851-9949 today



**ERA - SHOREWOOD  
REAL ESTATE, INC.**

ERA 1st IN SERVICE



**"Pioneer" Realtors  
on the  
Key Peninsula since 1981**

Homes for Sale:  
4BR - 2 3/4BA home in  
Wauna shores w/Community  
beach \$134,950.

2BR - possible 3, on almost  
2 acres of privacy \$91,500.

SMALL 2 or 3 Bedroom Starter  
homes or vacation cottages  
in Palmer Lake \$44,500 or  
\$44,900.

Lakefront lots for Sale:  
2 lots - perk approved.  
1k Minterwood \$32,500 - each.

JACKSON LAKE FRONTAGE  
150 ft, small picnic cabana.  
\$34,500.

PALMER LAKE Waterfront  
lots - 3 to choose from \$17,000 -  
\$24,000.

**884-3304  
K.C.CORRAL, KEY CENTER**



**857-2151** At the Purdy Bridge  
**876-9255** Intersection  
(Next to Pearl's)

**BEST BUY** - 117 ft. South  
Sound waterfront. Mt. Rainier  
view, deep water moorage,  
septic in and all utilities.  
E-Z terms. \$85,000.

**PIRATE'S COVE WATERFRONT** -  
70 feet on water. Water,  
power, phone, and seller  
will warrant a 2-bedroom  
septic. Near Treasure Island.  
\$60,000.

**READY FOR YOU!** 2-1/2 acres  
of beautiful pasture with  
power, phone and 2-bedroom septic  
already in. Community water  
available. Just \$27,500.

**CREEKFRONT FIVE** - 5 acres  
with creek near Vaughn. Perfect  
for mini-farm. Power & phone to  
site. Just \$30,000, with contract  
terms.



**Pioneer Day Fun Lovers -  
GO FOR IT!**

From the gang, **ART  
CHERYL  
GLORIA**

**Gig Harbor Insurance  
851-9900**

...We're across from Thriftway  
... Call us for a FREE quote





# Walt's

**GROCERY STORES, INC.**  
KEY CENTER & LAKE KATHRYN VILLAGE

**WE ARE HERE TO SERVE YOU!**  
**OPEN DAILY 8 AM TO 10 PM**

Bertha and Walt Schmidt thank the community for its support and hope you all have a great summer and Pioneer Days. We are introducing a new line of "environmentally friendly" products. If you are concerned, as we are, about the great place in which we live, you may be interested in these products. Information and displays will be available at both stores.



## This checking account helps fight pollution in the Sound.



 **Puget Sound Bank**  
Member FDIC

Key Center Branch  
9017 Key Peninsula Highway 884-9345



## Beer Garden Stage

4:30 - 5:00 pm Clam Island Band  
 5:00 - 5:30 pm Mary Salciccio - "Expressions Music"  
 5:30 pm (till midnight) Your favorite "Beer Garden Singers" are back to entertain until midnight.  
 9:00 pm Surprise visit from the latest Key Peninsula sensation, "The Whistling Navels."  
 9:15 pm Dancing under the stars 'till midnight in the Open Air Beer Garden. Your favorite songs all night long.

Beer Garden singers are: Heidi Brandt; Rita Taghon; India Bodder; Judy Jame; Brian McGeehe; Kristi Marvin; Nick "Elvis" Pearson; Dave Laurendeau; "Big Bob" Brown; Steve Roberts & Friends; Marie Ward; David Calhoun; "Fast Freddy;" Mike McCoy.

## Third annual Beer Garden opens

Adults! Come one, come all to the fabulous "Summerfest" Open Air Beer Garden at Pioneer Days. To absolutely tantalize your thirsty taste buds, there will be draft beer, wine, wine coolers and soft drinks. In addition, this year you will also find fresh, hot popcorn to munch during your respite in the Beer Garden.

Open from noon to midnight, bingo will be featured most of the afternoon in the Beer Garden, and as evening comes, entertainment will be provided on the intimate "Summerfest" Open Air Stage. Entertainment by all the Beer Garden singers from last year (including another surprise visit from "The Whistling Navels") and much more is FREE for your enjoyment as part of the Pioneer Days Celebration.

The tennis courts at the south end of the grounds will undergo a magical transformation two days before the Celebration to become an authentic German-style Open Air Beer Garden. The garden will

be decorated with plants from Sunnycrest Nursery and illuminated that night with strings of lights, giving it an ethereal quality.

In keeping with the family fun atmosphere of Pioneer Days, NO ALCOHOL WILL BE ALLOWED ON THE CIVIC CENTER GROUNDS. Consumption of beer and wine will be allowed in the Beer Garden only, and then strictly monitored and contained. Security will be on hand during all hours of the celebration to insure the tranquility of the event from start to finish.

Budweiser of Bremerton, who is cosponsoring Pioneer Days with the Civic Center Association, guarantees plenty of ice-cold Bud for thirsty attendees wishing to cut through the afternoon heat and hot August night.

Gather your friends, relatives and neighbors and have the time of your life in the relaxed atmosphere of our Pioneer Days Open Air Beer Garden ... "it just couldn't get much better than this!"



**SUNNYCREST** 884-3937  
 Located in Key Center  
 NURSERY & FLORAL

In a word, **QUALITY!**

Complete Selection of Nursery Stock  
 Bedding Plants \* Perennials \* Shade & Fruit Trees  
 \* Rhododendrons \* Shrubs \* Ground Covers

Full Service Floral & Gift Shop

Weddings - Parties - Sympathy - All Occasion

"Service is our Specialty"

Mon-Sat 9-6 pm.

Sun. 11-4 pm.



Peninsula Residents, Find Out Why Everybody's Talking About Telco.

People are finding out that there's a lot of value in a Tacoma Telco Checking Account. With MoneyPlus Checking you get free checks, free ATM access at our Gig Harbor branch and free money orders, cashiers checks and travelers checks. All this for a flat monthly fee of \$5. This account easily beats the competition's club account, and there's more. You earn interest on your low monthly balance. Check it out. We're the best bargain in town, and you qualify to join.



Gig Harbor & Key Center 858-2877  
 Gig Harbor Branch now open Saturday's 9 am-1 pm.

Your community credit You-nion.

## BORGEN BUILDING SUPPLY

The Peninsula Area's Oldest Complete Line of Building Materials

**LUMBER** - House Packages - Finish Lumber - Moldings

**HARDWOODS** - Furniture Maker's Delight!  
 Oak, Cherry, Teak, Maple, Alder, Walnut, etc.

**PAINT** - All of us have PAINTS, only WE have the BEST - BENJAMIN MOORE PAINTS!

**ELECTRICAL SUPPLIES**  
 - PLUMBING SUPPLIES  
 - LOTS OF FINE TOOLS

8714 N. Harborview Dr., Gig Harbor, WA 98335 851-9155

## BUY - SELL - TRADE

BASKETBALL FOOTBALL  
 SPORTS **B&B** CARDS  
 BASEBALL HOCKEY

12402 134th Ave. KPN  
 Gig Harbor, WA 98335

ROBERT HOLMAN  
 857-2890

Summer Hours: Mon-Sat 12:00 - 6:00  
 Visit our booth at Pioneer Days



## KEY CENTER SHELL

for Gasoline - Diesel - Lubes  
 and your Auto Repairs

884-3431

Stutz Fuel Oil  
 For Your Heating and Diesel Fuel Needs

858-9131

## Big Main Stage

11:30 am	Opening Ceremonies; National Anthem, Clam Island Band; American Trilogy, Nick Pearson.
12 noon	Western Swingeros
1:00 pm	Key Peninsula Players
1:30 pm	Clam Island Band
2:00 pm	To be announced
2:20 pm	Dan's Music (Dan Baldwin)
2:30 pm	Karate demonstration
3:00 pm	Old Time Fiddlers
4:00 pm	To be announced
4:25 pm	Individual Singers
4:30 pm,	Mary Salciccio from Expressions Music, Purdy
5:00 pm	Tacoma Banjo Club
6:00 pm	Entertainment moves to the Beer Garden

Steve the Magician (as seen on TV) will be performing 3-4 times at various locations throughout the day - a great show for kids of all ages.



Gary Giuntoli from BoMac Gravel, Henry Stock and Lorrie Jopp pour concrete for the new Pioneer Days fishpond.

## Eleven hours FREE entertainment

The giant stage in front of the Civic Center and the more intimate stage in the "Summerfest" Open Air Beer Garden, become the centers of Peninsula area entertainment starting at noon on Saturday, August 4. Bands, singers, karate demonstrations - all will be offered FREE to those attending the Pioneer Days Celebration.

The same committee that brought the "Great Pretenders" to the Key Peninsula dance circuit has scoured the countryside and auditioned a large number of acts. From those auditions have been selected

the very best entertainers who have agreed to donate their time to this wonderful cause. Several are housewives who could have had careers on the stage. You may know them ... but you may not know how talented they are until you see them in person at Pioneer Days.

Jerry Benoit is coordinating this ambitious undertaking and, as of press time, there were still one or two slots available. If you have a talent that needs showcasing, call Jerry at 884-3228 ASAP. Entertainers may audition from any community.

### ... More about Peninsula Goodwill *Continued from p.1*

throwing contest gets underway at noon beside the tennis courts. Horseshoe competitors from all areas are welcome to come and unseat the perennial champs from the Longbranch area.

The tennis courts will again be transformed into the "Summerfest" Open Air Beer Garden, complete with action-packed bingo in the afternoon and stage entertainment in the evening until midnight. The tiny lights strung over the top of the tennis courts magically transfigure the beer garden at night into an intimate area where one can enjoy entertainment, the company and joviality of others, or quietly stargaze overhead.

As a special entertainment treat, the Tacoma Banjo Band will be appearing from 5 pm to 6 pm on the main stage in front of the Civic Center. That notable

group, "The Whistling Navels," will return for a surprise performance in the Beer Garden. Last year they appeared (as if by magic) at 9 pm and were forced into encores twice. Evening seating is limited in the Beer Garden, so plan accordingly. (See entertainment schedules on the back page.)

Whether you like the best food, the best games, the best animals, the best area entertainers, the best tug-of-war over mud, the best fish pond, the best odds in a raffle, the best parade, the best games and animal shows, the best kids' arts and crafts exhibits, the best pioneer farms exhibits, the best food, the best horseshoe throwing contest or the best Open Air Beer Garden ... there is something for everyone. The 1990 Pioneer Days Celebration is a must attend event.

## Volunteerism is alive!

by Mike Salatino

Several years ago, Henry Stock recruited volunteer labor and help and built a fishpond on Key Peninsula's Civic Center grounds. Over the years it has become a favorite highlight of the youth of the peninsula at the annual Pioneer Days celebration.

This year Henry decided it was time to improve the pond and make it permanent. With his usual arm twisting and ear bending Henry convinced BoMac Gravel to donate the cement and Lorrie Jopp of Jopp Construction to do the construction. Mike Freeman designed, painted and donated the beautiful sign which now hangs by the fishpond. Of course, that was the easy part. There had to be excavating, clean up, general labor and, certainly, many supervisors.

A list of material donors, money donors and volunteer workers includes the following:

**Materials:** Ray Johnson of the

J.D.English Metal Co.; Bomac Sand & Gravel; Walt's Fine Foods; Lakebay Lumber Co.; Greg Stacy, Stacy Plumbing Supply, and Purdy Costless Drugs.

**Cash:** Sunnycrest Nursery; Puget Sound Bank; Key Center Chiropractic; Colony Realty; Master Sharpener; John Olsson, DDS; Key Peninsula Senior Society.

**Volunteers:** Henry Stock, Chairman; Mike Salatino, Art Hinzman, David Kitchen, Gene Battell, Lorrie Jopp, Chad Jopp, Erik Griz, Clem Curz, "Bud" Moore, Burt Wells, Dale Boquist, Nick Gloden, Rick Dalton, Roger Huber, Mike Freeman, Harry Anker, Swede Otten, Dan Altig, Warren Massey, Bob Zehnder, Gary N.Giuntoli, Earl Christine, Sam Miller, Carol Francis, Dan and Joanne Baldwin.

It is with great pride that we can say no public money or Civic Center funds were used to facilitate this project. Volunteerism lives!

## Pioneer Day Pins

Drop by Puget Sound Bank, the Country Mouse, Blundell's Chowder House, D.J.'s Mini Mart or Sunnycrest Nursery to get your Pioneer Day pin. A decision was made this year to go with a more permanent piece of jewelry that could be worn at any time. The cloisonne pin, designed by Pat Blundell, is a map of the Key Peninsula with the theme of "a natural beauty."



Your very "BEST" deal on a NEW Ford is at "Gig Harbor Ford"!

With Service Loaners  
for Life!

858-9981

