



KEY PENINSULA NEWS

The voice of the Key Peninsula



Non-Profit Org. U.S.
Postage Paid Vaughn, WA
98394 Permit No. 2
BOX HOLDER

CHS
Summer
Camp,
page 20

www.keypennews.com

Vol. 37 Issue 8 • Circulation 9,000

INSIDE & ONLINE

AUGUST 2009

Exclusively Online



Home Park Vandalized

Also online

- ▶ YMCA celebration
- ▶ Fire Prevention tips
- ▶ Ren Faire
- ▶ Photo gallery

keypennews.com

News

KP Council letter to county ..2
Fire Stats.....7
Roadhouse opens8
Family Fun Day schedule16
Return to Home premier17
Out & About24

Sections

Peninsula Views4
Business8
People10
Community Works12
Community17
Obituaries22

Key Peninsula mammals, artist create fiber art

By Colleen Slater, KP News

Elsa Leyden maintains a full time job of caring for her alpacas and llamas, shearing, washing, dyeing and drying alpaca fleece, and manufacturing a varied number of items for fiber art shows.

Last fall she participated in the Fiber Arts Show at the Longbranch Improvement Club and plans to do so again.

“That’s a trunk show,” she says with a laugh - whatever she can fit into the trunk of her car.

Her 60 alpacas are separated into three herds - two of guys and one of girls. Each herd has a variety of fleece colors, from white to dark brown.

“I don’t have a silver-gray,” Leyden said, “so I have to trade for that.”



Photo by Colleen Slater, KP News

“The girls” approach to study a new visitor at Elsa Leyden’s farm in Longbranch.

With her “60 critters makin’ hair,” she said she finds her time processing and constructing keeps her busy year-round.

“I’m always scrambling between shows,” she said, making new products for the next one.

Dye lots are done with 2 pounds of fleece per bag. They are brought to a boil - 180 - 190 degrees - boiled for 40

minutes, then set overnight. Since the alpacas are different colors, Leyden can have light to dark shades of a single dye color.

Leyden’s process of making felted fabric for various uses is one she’s perfected over several years. Her fabric,

(See ALPACA, Page 19)

Political mud slinging begins

By Marsha Hart, KP News

Several Key Peninsula residents have come forward with a copy of a police report dated from 1983, which names James Bosch, current District 16 Fire Commissioner, as a suspect in a crime. The police report, though more than 25 years old, has surfaced and been distributed anonymously through the U.S. Postal Service.

The Key Peninsula News received a mailed copy with no return address or signature on the letter.

The number of Key Peninsula residents who have received this public record

document is unknown, but it has drawn different reactions.

“It was one of the lowest political moves I’ve ever seen in person,” said Debra McElroy who resides part-time on the Key Peninsula. “You see this kind of thing on TV. There was a lot of energy and thought wasted on revenge, I think.”

The fire district has five commissioners who serve six-year terms. Bosch is running again in November.

“It will be investigated and lawsuits filed for malicious harassment,” Bosch said. “We know who the head of the snake is that started this. A lot of people will be drug down and likely sued.”

Bosch said he was told if he ran for re-election this police report would be distributed.

“This is blackmail and malicious harassment,” he said. “It is very upsetting to me.”

McElroy said she assumed it came from Al Yanity, a longtime rival of Bosch and also a current fire commissioner.

In 2007, Bosch and Yanity were in an altercation that resulted in Yanity being led away in handcuffs after hitting Bosch in the head with a coffee mug.

“Who’s sending it, I really don’t know, Yanity said. I know what it’s like to have it done, and I’m not going to do it. When you run for public office your closet is

(See MUD, Page 17)

KP Community Council drafts letter to county

By Marsha Hart, KP News

After two meetings to discuss the plans for a traffic signal at the intersection of Olson Drive, Cramer Road and Key Peninsula Highway, the Key Peninsula Community Council has concerns.

A letter was drafted by the council's Transportation Committee, and its writing committee, and unanimously approved by the council's directors. It is addressed to both Brian Stacy, county engineer, and Terry Lee, county councilman, the KP Community Council states that not enough time has been spent evaluating options other than a traffic signal.

"Our own Transportation Committee, as well as a number of community members who spoke at our meetings feel that a roundabout would be more favorable than a light, and the engineers have not completely reviewed this option," the letter states.

The council has asked the county engi-

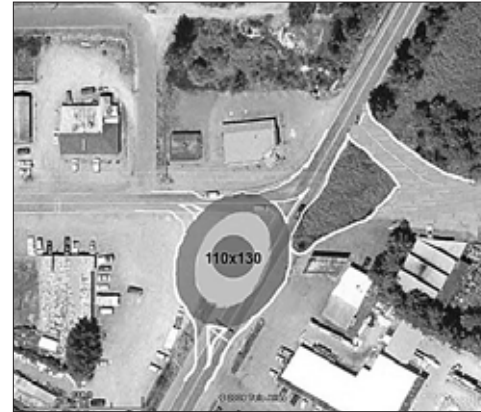
neers to provide a drawing of the intersection with a roundabout, but thus far the county has not supplied that engineer drawing.

In an effort to take a look at a roundabout option, the council's Transportation Committee took an aerial view photograph of the intersection and drew a mock-up of the roundabout. The councilmembers admit however, that they are not engineers and cannot provide what a county engineer could provide.

Another concern listed in the letter is that of funding. The council is unsure if funds can be used for a project other than the traffic signal, and how long the funds will be secure if the project is delayed.

The letter also requests additional measures to enhance the safety of drivers and pedestrians:

Extend 35 MPH speed limit to just north of Absolute Auto



Courtesy of the KP Community Council

The Transportation Committee of the KP Community Council attached this aerial photo and mockup of a roundabout with its letter to the county.

Extend 35 MPH speed limit to south of 88th St. (vicinity field fronting the Art Barn)

Lower speed through Key Center proper (i.e. from 500 feet before

proposed traffic signal to library) to 25 MPH

New signage to north & south of Key Center alerting drivers to Congested Area Ahead

Install rumble strips north & south of Key Center (these should be placed in conjunction with the signs reducing speed from 35 to 25 MPH)

Driver speed feedback signs
Mid-block crosswalk with flashing lights 600 feet south of the intersection. The flashing lights should be an "on demand/press to activate" version.

Install center turn lane through the length of Key Center, from the intersection through to the library

Another open forum is scheduled for Sept. 9, and the council is requesting that the county incorporate the recommendations into the project, and a thorough investigation of the roundabout option. It also requests a written response before Aug. 7.

BRIEFS

news

Lions sponsor speaker forums

In keeping with the non-partisan code of Lions International, the Key Peninsula Lions Club will sponsor speakers' forums for the following dates and personalities:

Aug. 5, Sen. Derek Kilmer; Aug. 19, District Governor Dave Pratt; Sept. 2, Andrew Morrison, Public Defender; Sept. 16, Rep. Jan Angel; and Nov. 18, Rep. Larry Seaquist.

The Lions welcome and encourage the general public to attend the forums. All of the forums are free, and will be held at in the VFW Room at the Key Peninsula Civic Center at 7 p.m. on the above dates.

For information, contact KP Lions' President George Robison at 853-2721, or Club Secretary Neal Van der Voorn at: mailto:nealvandervoorn@yahoo.com.

KP Fair Board moving forward to 2010

The Key Peninsula Fair Board met July 14 and has made some decisions about the 2010 fair.

The fair will be a two-day event the weekend of Sept. 11 and 12. There will be a continuous day of activities on Saturday that will appeal to children, teens and adults, including a beer garden. Some other activities and contests mentioned were slug races, ugliest cat, best uses of a blue tarp, riding lawn mower races, and a kid's tractor pull.

The board agreed to do away with the traditional Key Pen Fair model, and go with a radically new event, and abandon the idea of the carnival.

There were also ideas tossed out, such as the name of the fair, however no agreement was made yet on that item.

SOCIAL SECURITY DISABILITY
Advocate/Representative
High Success Rate—13 Yrs. Experience

MISSION POSSIBLE
Employment Services, Inc.
Ticket-to-work Job Development

253-884-9205
or
360-798-2920
www.mpsinc.com

Burch Electric
Lic# 000016106161

884 1372
549 6916
884 3236

www.burchelectric.com
P.O. Box 884, Vaughn, WA 98394

KEY PENINSULA NEWS
www.keypennews.com
Unsolicited submissions deadline including press releases:
15th of each month

To subscribe, please write, call or fax:
Key Peninsula News
17010 S. Vaughn Rd.
P.O. Box 3, Vaughn, WA 98394
Phone (253) 884-4699
Fax: (253) 884-4053
Email news@keypennews.com

Executive editor: Marsha Hart
Assistant editor: Danna Webster
Ad sales: Lori Boll, Laura Mosley
Community pages editor: Connie Renz
Production: September Hyde, Chip Butzko
Interim web master: Rodika Tollefson
Staff: William C. Dietz, Hugh McMillan, Colleen Slater, Frank Slater, Irene Torres, Mindi LaRose, Karina Whitmarsh, Sharon Hicks, Lori Colbo, Donna Smeall, PJ Kezele, Kevin Reed, Sarah Kehoe
Distribution: Vic Renz, Phil Bauer
Contributors: Jeanette Brown, Jerry Libstaff, Rick Sorrels, Marilyn Newton, Jud Morris, Angeliqne Knapp

Key Peninsula News is published monthly by the Key Peninsula Civic Center Association at the Key Peninsula Civic Center in Vaughn, Washington. Copyright 2009 with all rights reserved. Reproduction of editorial or graphic contents in any manner without permission is prohibited. Annual subscriptions (12 issues) are available for \$25.00 and are mailed first class. Copies are mailed presort standard to residents and post office box holders of the Key Peninsula. Single copies are available at the newspaper office in the basement of the Civic Center annex and at various distribution points located on the Key Peninsula. Approximately 18,000 people live in the distribution area.

STATEMENT OF OWNERSHIP, AND OPERATION OF THE KEY PENINSULA NEWS

1. THE KEY PENINSULA NEWS is a community newspaper, owned and published by the KEY PENINSULA CIVIC CENTER ASSOCIATION, a nonprofit, 501-C3, corporation with main offices in Vaughn, Washington. The name, goodwill and any copyright assets that may exist pertaining to the NEWS are among the financial assets of the KEY PENINSULA CIVIC CENTER ASSOCIATION.
2. The objective of Key Peninsula News is to support and create community by reporting news and features and providing a forum for local information. News and editorial coverage focuses on the Key Peninsula and immediately adjacent areas within Fire District 16.

OUR GRATEFUL THANKS TO ALL WHO CONTRIBUTE TO THE KEY PENINSULA NEWS!

The opinions expressed herein are the opinions of the writers and do not necessarily reflect the views of the publishers or staff. All letters to the editor must be signed and include a daytime phone number for verification. No anonymous letters will be published. Submissions are used on a space available basis and may be edited if used. THE KEY PENINSULA NEWS reserves the right to edit all submissions for length and content. Mail letters to: P.O. Box 3, Vaughn, WA 98394, or email to news@keypennews.com

BRIEFS

news

Afternoon high school available at Bates

Beginning in the fall quarter, Bates will launch its new afternoon technical high school program, which will allow students to start their school day at noon and end by 6 p.m. Students enrolled in the afternoon high school program will begin with three hours of academics and conclude with three hours of a career education program. Students can choose from four career programs.

- Introduction to electrical construction trades-A combination of lab and classroom work, this program introduces students to safety practices, tools and materials, applied math strategies, project planning and other standards found in the electrical construction industry.

- Introduction to woodworking trades-Students prepare for jobs in the building and construction industry, including boat building, residential carpentry, architectural woodworking and facilities maintenance.

- Mobile electronics installer-Students

learn basic installation techniques and equipment used in the mobile electronics industry, including global positioning systems (GPS), home theater and audio systems and security units.

- Power sports and equipment repair-Students learn to maintain and repair a wide variety of two- and four-cycle engines, power trains, chassis and related components found in power sports vehicles and outdoor power equipment.

Eligible students are between the ages of 16 and 20, without a high school diploma or equivalent. Tuition is free for high school students, who pay only a \$25 program fee per quarter. Interested students must register by Sept. 10 and are required to attend a high school orientation offered Thursdays at 10:30 a.m. at south campus, 2201 S. 78th St. in Tacoma, or at 3 p.m. at the downtown campus, 1101 S. Yakima Ave. in Tacoma.

For more information, go to www.bates.ctc.edu or call 253.680.7000.

Sewer permit extensions through December

Due to the downturn in the building industry, some developers need to delay projects until market conditions improve.

Pierce County Public Works and Utilities announced an extension for the sewer permit through December 31.

The action allows all sewer applications, approved plans and permits that would expire by the end of the year to remain valid for an additional 12 months.

Last fall, in accordance with the economic stimulus package for Pierce County, the County Council passed Ordinance 2008-115s, which allowed the Planning and Land Services Department to offer a 2-year time extension on active building permits, vesting rights, and other land-use development applications and approvals. Through a policy revision, Public Works and Utilities offered a similar, but shorter, extension to active sewer applicants.

The original policy change applied only to sewer applications that would have expired before July 1. Now those that will expire by the end of the year are also eligible for the one-year extension.

Sewer applications are processed in three phases, each having a one-year time limit.

First, an application for a sewer connection is submitted, followed by construction plan approval, and ending with a county permit. Once the permit is issued, the applicant has one year to complete the sewer connection.

2 seats open, applications due middle of August

Applications are being accepted to fill two vacant positions on the Pierce County Landmarks and Historic Preservation Commission. Appointments are made by the County Executive with Council confirmation. Application deadline is Aug. 15.

The 11-member commission makes recommendations to the County Executive and Council on historic preservation-related matters. Meetings are held on the second Tuesday of the month from 6 to 7:30 p.m. in the County Annex, 2401 S. 35th St. The commission is comprised of seven council district representatives and four at-large members. Terms are three years.

Individuals who reside in Council Districts 1 and 7 and have expertise in history, historic architecture, archaeology and archival science are encouraged to apply. Applications are available from the Planning and Land Services Department at www.co.pierce.wa.us/pc/services/citizopp/bds.htm, at 253-798-2783, or e-mail jpark@co.pierce.wa.us.

Council District 7 covers Gig Harbor and Key Peninsula, Fircrest, University Place and Fox Island. Council District 1 covers Buckley, Wilkeson, Carbonado, Bonney Lake, Sumner, Edgewood, Milton, South Prairie, Orting and Graham.

Voting begins Aug. 18

On Aug. 18, Key Peninsula residents can vote on the proposition to authorize a new regular property tax levy rate of \$1.09 per \$1,000 of assessed value. In 2004, voters approved a rate of \$1.50 per \$1,000.

Polling locations are at: Evergreen Elementary School, and the Key Center Fire Station. Express Booths are open Aug. 14-18 from 7 a.m. - 8 p.m. and located at Purdy Fire Station, Safeway shopping center on Pt. Fosdick Drive in Gig Harbor.

24th Annual

OLD TIMERS DAY FESTIVAL & LOGGING SHOW

- Live and Silent Auctions • Food
- Kids Games • Petting Zoo
- Down Home Band • Logging Show
- Vendor Booths • Raffle Drawing
- Key Singers



Date: Saturday, August 15th, 2009
Time: 10:00 am - 4:00 pm
Location: Longbrandt Improvement Club
 (follow signs from Purdy)
Address: 4312 KPHwy 5
 Longbrandt, WA 98351

All Proceeds Benefit
 Key Peninsula

Community Services
 Food Bank & Senior Center
 17015 9th St. Ct. KPN, P. O. Box 392
 Lakeway, WA 98349
253-884-4440
FAX 253-884-6196

Thanks Goes to:
**Larry & Fern
 Hagen**
 for being our
 Volunteers of the Month
 for July 2009



Please help us feed our families on the Key Peninsula. We always need:

Sugar, Flour, Rice, Pasta, Oatmeal, Soup, Top Ramen, Meat, Juice,
 Dairy Products, Dish Soap, Laundry Soap & Monetary Donations

NW SPORTS
PHYSICAL THERAPY, INC.




Our services include:
 • Orthopedic Rehab • Pre & Surgical
 Rehab • ACL Prevention and Rehab • Sports
 Conditioning & Training • Neck Rehab •
 Back & Neck Care • Work Injury Rehab •
 Sports Injury Rehab

Call today... (253) 851-7472
 3411 D. Fosdick Dr., Ste. 101
 Gig Harbor, WA 98355

2 CRAZY COUSINS

Collectibles • Unique Gifts • Vintage Linens • Jewelry • Cards • Vintage Tools
 Nautical • Local Products-Including Gourmet Coffees
 Local Honey • Handmade Childrens Clothing

Another Roadside Attraction...

1st & 3rd Saturdays of Every Month-Vacant lot next to us
 Call 884-3210 to sign up

SELL YOUR TREASURES

TUES-FRI 11am-5pm Sat 11am-5pm
 12402 134th Ave KPN (S. of N. of Key Center)
253-884-3210

TABLES \$10 EACH

We support local entrepreneurs and carry locally made coffee, honey candles & lotions

EDITORIAL

KP needs healthy forward direction

As with any war, whether a war of countries, a war of cultures, or a war of individuals, the key ingredient is conflict.

Unfortunately, the Key Peninsula community has witnessed a perpetual conflict between two Fire District 16 fire commissioners. Often people start to line up behind their friend and lob insults or worse at the other side, and what began as something small can quickly become a war.

Who will win? Nobody.

In prolonging a conflict we only harm our community and ourselves. Differences are a given. Disagreements are also to be expected, and healthy disagreements are what promote and generate growth in any civilization.

But in a civilized society we must behave as civilized people. Threats,

infighting, backstabbing and revenge are unhealthy for individuals and the community as a whole.

By narrowing our view we miss the big picture. People's lives suffer on both sides of the fight, and in turn the community begins to take on the negativity and suffer as well.

If we are to establish the Key Peninsula as a place where people want to visit, and a community to raise our children and enjoy our lives, we must commit ourselves and focus our energy to the betterment of the community as a whole.

A question we must all ask ourselves is this: What do we want our community to represent to our children, our grandchildren and our neighbors? Do we want to be seen as the community that learned from past mistakes and moved forward in a healthy direction, or do we want to remain stuck in the past?

It is time for the individuals who continue feeding the conflict to humble themselves, stop for a moment and consider what is best for the community.

LETTERS TO THE EDITOR

Yes for fire

A group - mainly one person - calling itself "responsibility first" is trying to confuse the voters. Here is the truth.

First, the "group" claims that Key Peninsula Fire Department doesn't have drug testing. Their claim is false. Key Peninsula Fire has a drug policy and procedure in place that has been used successfully. It employs a policy that is the standard of the industry, endorsed by the Washington State Council of firefighters and utilized by most of the departments in Washington State.

Secondly, this group says KP Fire doesn't have a fitness standard. This too is false. KP fire actually uses the same standards as Tacoma Fire and even use the same testing agency for annual

evaluations of both career and volunteer members.

Truth be told, this isn't about fitness or drugs. It's an internal battle between two commissioners. Tell them to leave our fire department out of their fight.

Join me in taking "responsibility" for the safety of this community and vote YES for our Fire Department.

Chuck West, An employee of KP Fire and a taxpayer

Key Pen Parks wants public involvement

It's time for your passion!

Why now? Because WE—the folks who live on the KP—now have more parkland

per person than Seattle! With the addition of the "360" property and Maple Hollow (thank you Sen. Kilmer, Rep. Seaquist and Councilman Lee), and earlier purchases at Taylor Bay, Minter Creek and Dutcher Cove, we have preserved hundreds of acres of forest land and seashore.

The next step is up to you to decide what should be done with this land. Like your own budget, there will be choices based on greatest good for dollars spent—but you need to be involved in the process. Find the other folks like you and start coming to Parks Board meetings and telling us how important it is to try to fund your passion.

Through aggressive pursuit of grant money, Key Pen Parks has turned a budget of a little over half a million dollars into well over \$10 million worth of land and improvements. Two positions on our board will be contested this fall. Please get to know the candidates—they will have much to say on how your dollars are spent.

And share your passion with all of us on the Board — you can contact us at KeyPenParks.com or run into one of us at almost any community event.

Greg Anglemeyer, Vice-President Key Pen Parks

Gunfire on the Key Peninsula

Every Sunday morning I get up around seven, make some coffee, and think about taking my dog to the dog park. She goes out with a few low-key, subdued, investigative barks that sound like "boof!" as she does a Complete Evaluation to find out what, exactly, happened overnight on her property, as well as our neighbor's, using only her nose. Somewhere between 8 and 9 a.m., she comes to the back door and wants to come in, and when I open the door I hear the rhythmic "pop-pop-pop!" of a shotgun echoing through the trees. She hates the sound of guns and fireworks, or anything that explodes, really, so when she hears that she promptly comes inside. Someone near our house shoots every Sunday between 8 and 9 a.m., almost without exception. In a way, it's become a comforting part of my Sunday, that regularity, even though my dog's not too happy about the whole thing. Many days, we'll hear guns go off

KEVIN REED
HERE'S SOMETHING



here are there, close or far away, in what we hope are adults and supervised kids engaging in relatively safe shooting on their 5+ acre plots of land. In that respect, it's the sound of freedom mixing in with low-flying aircraft bucking a headwind, helicopters booming through the clouds, birds singing, kids laughing, and dogs barking. All-American sounds of the KP, if you will.

Less comforting, for me anyway, are the shots that ring out after dark. Maybe it's the nice warm weather or something, I don't know, but each week this summer it seems I'm hearing more and more gunfire after dark, sometimes pushing two or three in the morning. Some of these are probably M-80s or other fire-

works, but there's no mistaking the sound of a firearm and the even spacing of reports from someone shooting one. The main thing I'm thinking is - what in tarnation are they shooting at after dark? Is their back yard like a lighted ski resort or golf course, where they've trained flood lights on immobile targets and come home after a few beers to take out some frustration on cardboard cutouts of their least-favorite politician, or maybe a steel silhouette target in the shape of a terrorist or home invader? Well, maybe, but sometimes the shooters move around. One night, around 11, someone discharged eight rounds from a handgun less than 100 yards from my house and the surrounding homes. And we all come out of our houses and look around, you know, with the old "What the heck is going on out here?" look on our faces, dogs yapping and lights snapping on. No sooner do we go back in then we hear another eight rounds. After that, I went

and stood in the dark out there in the road, hoping to get their exact location, but the shots never recurred, though if you stand quietly in the woods at night, you will eventually hear a bunch of small and large animals moving around, which is sort of fun, unless you have to get up a four in the morning like I did. Which is the other thing. It's hard to sleep through late night gunfire if you have to get up early. Recently, I heard what almost certainly was a large caliber rifle going off someplace before midnight. It sounded like a .50 caliber sniper rifle, and I'm only slightly exaggerating. And now, many nights, you can hear a series of shotgun blasts, or other assorted cracks and reports that are almost certainly not fireworks. I can see someone shooting an occasional coyote snooping around the chickens, but that can't explain all of the shots. I'd love to be a fly on the wall and see what some folks are shooting at after the sun goes down.

2009 Primary election issues — Taxes and More Taxes

The August 18 Primary election has only one issue for KP residents to consider:

FD16 FIRE LID LIFT LEVY: A very important issue for KP residents.

The last two fire suppression levy votes failed. FD16 is operating on minimal funding and depleting their reserve accounts. Additional levy failures will see a significant reduction in services provided and possible subsequent increase in the cost of homeowners insurance for KP residents.

Two more failed levies could result in a serious re-structuring of the department, something the citizens may live to regret.

FD16 is planning an additional levy vote in 2010 to continue the EMS services, and another levy in 2011 for fire suppression (again).

Voters routinely approve fire levies, because it is in the voters' self-interest

RICK SORRELS
THE PRAGMATIC SOPHIST



to protect their lives and property. Something significant is happening when fire levies fail.

The voters do not have any problem with the Fire Department itself, the firefighters, or medics. The voters have had a continuing problem with the Fire Commissioners, who are completely out of touch with the citizens they "represent".

The commissioners' legal responsibilities are to the citizens, acting as an oversight agency to ensure that the Fire Department is managed in accord with the needs and desires of the citizens.

These commissioners, instead, act in the self-interest of the department,

ignoring their constituents, secreting information and decisions, and generally abrogating their public duties.

The disconnect is so obvious and well known that State Representative Seaquist on no less than three occasions over the past two years, has appeared at commission meetings and suggested that the commissioners utilize a mediation service to help settle the rift with the public. Deaf ears.

An informal survey of KP residents reveals a strong and shared emotion among a surprisingly large percentage of those polled, stating "I will never vote for a fire levy while 'those two' commissioners are still on the Board", referring to two particular fire commissioners that have become the manifestation of all that is wrong with FD16.

At this point in time, it doesn't matter who is at fault for what past transgression. The public has a bad

taste in its mouth, which must be excised before FD16 can again thrive. Liabilities must be eliminated and good will restored.

The "other three" commissioners have tried to convince "those two" commissioners into resigning, or at least to not run for re-election (as one is doing) in November. Stubbornness, obliviousness, and insensitivity prevail.

Voters have only three ways to express their angst: (1) Who they vote into office for a six-year term, (2) recall petition (removal of an elected official), and (3) a vote against a fire levy.

Fire commissioners frequently run unopposed. Apathy did not generate sufficient signatures on a recall petition last year. Citizen displeasure manifests itself with failed levies (all it takes is the stroke of a pen).

Consider your vote on the Fire Levy carefully. It's an important vote with long ranging repercussions.

The opinions expressed on this page are not necessarily those of the KP News. We neither endorse nor oppose issues or proposals discussed on this page and present these views for public information only.

Horseshoe Lake Golf Course

76

Save 4 (four) receipts from Purdy 76 each with an 8 (eight) gallon minimum gas or diesel purchase. Bring them into Purdy 76 and the cashier will give you a 2 for 1 card to play golf at Horseshoe Lake Golf Course.

Make your tee time with HLG.C at 253-857-3326 or go online to www.hlgolf.com.

HLG.C is located at 1250 SW Clubhouse Court, Port Orchard, WA 98367.

Limit one 2 for 1 card for each four receipts. The four receipts must be dated from May 1, 2009 through Sept. 30, 2009. The 2 for 1 golf card will be good until Oct. 15, 2009. rules subject to change.

Cash is King and the The Greens are Pristine
Accepting Cash Again!

The Restaurant is Open

www.HLgolf.com

Pro Shop (253) 857-3326 • Restaurant (253) 857-3784

APP PROPANE

Propane \$1.09⁹ Gallon* *800+ Gallons Price subject to change. Call for quote

Owned Tanks		Leased Tanks	
500 Gal. +	\$ 1.09 ⁹	500 Gal. +	\$ 1.19 ⁹
300 Gal. +	\$ 1.19 ⁹	300 Gal. +	\$ 1.29 ⁹
150 Gal. +	\$ 1.39 ⁹	150 Gal. +	\$ 1.49 ⁹

Plus +++ Special Pricing For Commercial Customers
Including: Restaurants, Fire Stations, Churches, Schools, Hospitals, Retail Shops, Hotels, Dry Cleaners, Resellers & Construction Contractors.

CALL FOR PRICE AND SERVICE QUOTES
1-800-929-5243

ST. ANTHONY PROMPT CARE

++



St. Anthony Prompt Care

Urgent medical care for life's unexpected bumps, bruises and bugs.

Athletics are good for your health but sometimes rough on your body. If you need to see a doctor quickly, St. Anthony Prompt Care is just minutes away. Our experienced, board-certified doctors are here for you – even evenings and weekends. So the next time you get a little banged up or bruised, just come on in. We'll treat you promptly and get you on your way.



No appointment needed!

Monday – Friday 7:00 am – 9:00 pm

1253, 853-2050

Saturday and Sunday 9:00 am – 5:00 pm

4700 Point Fosdick Drive, Gig Harbor

FOR ADVANCED MEDICINE AND TRUSTED CARE,
CHOOSE ST. ANTHONY PROMPT CARE.

www.FHSIhealth.org/prompt

24/7 Emergency Care Available Now! – St. Anthony Hospital's emergency department is now open 24 hours a day, 7 days a week. 11567 Canterwood Blvd. NW, Gig Harbor.

ADVANCED HEALTH
CARE GROUP

**Franciscan
Medical Group**

A Part of Franciscan
Health System

Join Us At The ...
Krazy Key Parade

Aug. 8th in Key Center, 10am Sat. & Sun

Check out the...
Sidewalk Sale

Great Deals on Over-stocked Merchandise.

One of a Kind—Priced to Sell!

Visit Our Scratch & Dent Section too!

50-75% OFF

Add Color To Your Summer Garden
Roses—Hydrangeas—Perennials

25% Off

Over 200 varieties of Perennials,
 50 varieties of Roses & 10 varieties of Hydrangea



ANNUAL POTTERY SALE

Pots from around the world

CHINA, VIETNAM, MALAYSIA, ITALY

25% OFF

Special Section:
 Rustic Pots

60% OFF

Bird Baths • Arbors
 Benches • Trellis • Gazing Balls

25% OFF

6' Fan & Ladder Trellis
 reg. 19⁹⁹ **Sale \$12⁹⁹**



Come Check us out!



Open
 Every Day!
 All Bank Cards
 Accepted

Located in
 Key Center

Monday-Saturday 9am-6pm
 Sunday 11am-4pm

884-3937

FD-16  **STATS**

Key Peninsula Fire
 Department rescue calls

July total calls: 41

EMS: 28
 Fire/service: 9
 Other: 4

July 13

A 61-year-old Lakebay female was treated for an allergic reaction. After returning from a walk the patient noticed burning, itching and swelling in her hands, feet and face. Paramedics transported the patient for further evaluation at the local ER.

July 14

A 2-year-old fell out of a first story window with a screen, 5 feet to the ground on river rock and cement. The child, who was being watched by the grandmother, was transported to a Tacoma Hospital.

July 15

A 57-year-old Gig Harbor man suffered a hip injury following a motorcycle accident. The patient was walking his motorcycle on the shoulder to turn it around when he lost his balance and laid the bike down. When he did so he felt a severe

pain in his left hip. The patient refused transportation by EMT's to the emergency room even though he was unable to bare weight on his injured leg.

July 16

An 89-year-old Home woman fell next to her bed and was unable to get up. Firefighters responded and found the woman uninjured so they assisted her back into her bed.

July 17

Key Peninsula firefighters responded to a 20-year-old female Wauna resident that was experiencing flu-like symptoms and a fever for two weeks. She was taken to a Gig Harbor facility.

July 18

A tree fell into a power line, pulling it down across SR302 at the 1400 block, and starting a small brush fire. Fire crews extinguished the fire and Pen Light cleared the roadway.

July 19

A 63-year-old Minter area man fell from his bicycle while attempting to avoid a dog that ran out in front of him. The man struck his head and was found unconscious. The man stabilized at the scene and was transported to a Tacoma Trauma Center.

LAKEBAY TREE SERVICE

FREE ESTIMATE
 CAT RESCUE



24 HOUR
 EMERGENCY
 SERVICE


**TREE REMOVAL
 VIEW CLEARING
 PRUNING
 WIND THINNING
 BRUSH CHIPPING
 TOPPING
 TRIMMING**

(253) 884-3043

TOM ROLFZEN (253) 381-3586
 MARK LUKETZ (253) 341-1262

LAKEBAY

**We work for you,
 not Wall Street.**



Mark Christel Belfair
 360.275.3666
 lpl.com/mark.christel
 24200 NE State St 3, Suite G
 Seattle, WA
 LPL Financial Member FINRA/SIPC

Have you ever wondered who your financial advisor really works for, you or the firm? Our goal is your success as an investor. We work strictly for you. And we are backed by the strength and reliability of LPL Financial, the largest independent broker-dealer in the nation. We focus on one bottom line: yours.

Please call to learn more and schedule a free consultation.

LPL Financial
 STOCKS • BONDS • MUTUAL FUNDS • IRAs



Todd Rosenbach
 Key Peninsula
 253.884.4787
 lpl.com/todd.rosenbach
 6613 KPN Hwy, Suite B
 Key Center, WA
 LPL Financial Member FINRA/SIPC

Restaurant opens under new ownership

By Irene Torres, KP News

It's official. The Road House on the Hill in Lakebay is open for business under new ownership, according to Scott Wille. After months of planning, fixing up the building, installing equipment, and licensing, the new owner Wille and his sister-in-law, Laura Johnson, the restaurant's manager, decided on a soft opening in mid-June. A grand opening was held on July 1.

Johnson has been working in the restaurant business for 24 years, with the last 10-12 years in management. Johnson said, "It took a lot for me to leave my job at Gino's (formerly Tweten's Lighthouse in Port Orchard), but this is a great place with a lot of potential. It's tough working 18 hours a day, but we know it will be worth it. We're a family here."

Johnson is a single mother of a 13-year old daughter. She said, "The people in the community are down-to-earth, and we want to hear their comments."

Wille said, "Laura is a real mother-hen. She keeps everybody in line, and does it with a smile. Laura insists our customers feel 'served'—not waited on. Laura found a couple of really good cooks to come and run the place like it was their own kitchen."

Head cook, Damon Counterman has been cooking for 25 years. The other cook, David (Junior) Potts, has 14 years of experience. Potts does the baking: homemade pies and biscuits.

"The food looks good, tastes good. It's consistent," Wille said.

He admits he has no restaurant experience, but owning one has been a long-time dream. After moving back from Texas after 14 years, "We're learning quick," Wille said. Aside from a few minor problems like running out of ice on a regular basis and configuring the point-of-sale system, the start-up has been smooth.

"The staff is experienced," Wille said. "It's more fun starting soft. We're enjoying the families who come in with their kids. That's what we want this to be — a place for families."

The Willes have four children, Brad, Nicholas, Garret and Molly.

"Part of the excitement is when we start to get busy. The staff perform better when it's rushed," Wille said.

The other part of the excitement is the support from local business owners. "Greg Calahan wished us well. Lulu Smith sent flowers."

“I'm a big believer that community business is community business.”

— Greg Calahan, business owner

Calahan said, "I'm a big believer that community business is community business."

Wille's wife, Rainie, waits tables during the day while Wille manages an engineering firm that does tooling design for Boeing, Bell Helicopter, Cessna, Pratt & Whitney and other major aerospace companies and suppliers. His engineering background came in handy during the design of the restaurant's logo and menu.

"We decided to start off with a wide variety and run a lot of specials, to see what people want," he said.

Speaking of the menu, Wille said, "The best bargain is the prime rib: 16 oz. for \$14.99. The most expensive item on the menu is the wild Alaskan halibut for \$17.99. We serve halibut four ways and we have a cedar-planked salmon. We bread our own fish and prep it ready to fry. We hand-cut our steaks in good portion sizes. We make all our own dressings."

There are also prime rib, steaks and burgers — meat and potato-type meals, Wille said. "Pretty much every menu item is available from 8 a.m. to 9 p.m., except prime rib—which is ready after 4 p.m. Some of our customers like breakfast for dinner," he said. Then he asked, "Have you tried our deep fried pickles?"

The Road House employs 11, some local, others from Port Orchard and Bremerton.

Wille wants to purchase local products, oysters, clams, and farm produce, to ensure freshness. He is looking into a roving slaughterhouse as a local meat supplier. Future plans may entail moving the bar downstairs and building a wrap-around deck. But that will depend on the success of the business and "how well it's accepted in the community," Wille said. "We want feedback. It's the only way we can get better."

A search of the Washington State business licensing website lists the governing people as Douglas R. Fabre, Kelli Ann Pinchak and Scott A Wille. Silent partner, Faber, is Rainie Wille's uncle.



Photo by Karina Whitmarsh, KP News

In the picture is Douglas R. Fabre, facing, and Tim Lewis. Douglas is the owner of the building and said, "Laura and Scott are doing excellent, great personalities; the cooks are good and doing real good...surprising the heck outta me."

Rent A Power Boat Rent A Kayak



GIG HARBOR
RENT-A-BOAT
& Charters, LLC



Located below
Anthony's Restaurant
8829 N Harborview Dr
253 858 7341

Open Daily—10 am
Spring and Summer

- Single or Double Kayaks • Canoe • Pedal Boat • Row Boats
- Power Boats • Lessons Available for Kids & Adults
- Guided Kayak Harbor Tours

New at Kopachuck State Park

June thru September 2009, 11am to 6pm

Kayak Rentals

All Equipment Provided ~You come and play
Boats are located on the beach below the parking area

More flavors of summer fun

Aug 1 Beyond the Borders

World Music Festival, Art show, art vendors, food, beer garden.
FREE CONCERT: 12:30 Eric Raus, keyboard with an attitude. **2:00 Malibu Manouche,** gypsy jazz meets surf guitar, with Neil Anderson from Pearl Django. **3:30 Jami Sieber,** world music on electric cello with percussion & vocals. **5:00 Sambatuqué,** Afro-Brazilian 5-piece band. **Paroquian Intentional** drummers and **WASSUP** ukelele band. Thanks to **Key Pen Metro Parks,** **Flames County Arts Commission,** **Two Waters Arts Alliance** and the LIC.

Aug 15 Old Timers Day

to benefit Key Pen Community Services

Sept 5 Labor Day Dance

we come back! The New Blues Brothers

Call for Fiber Artists

Oct 3 Fiber Arts Show

Exhibit work, share techniques. Space is limited, apply before Sept 1st at ewiley@smc.com

253 884-6022 for LIC information

253 884-9157 for event info/art tickets

LIC Clubhouse at 7312 Key Pen Hwy S, 5 miles south of the Home Bridge

www.longbranchimprovementclub.org

Lavender and antiques sale

By Colleen Slater



Photo courtesy of Rita O'Dell

A sample of items offered by Lavender Park and available Aug. 8.

Lavender Park, on Cramer Road at Key Center, hosts a dozen antique dealers and offers various lavender products on Aug. 8 from 9:30 a.m. to 4 p.m.

Owner Rita O'Dell says the dealers will sell antiques, vintage jewelry, small furniture, and collectibles.

O'Dell will also sell vintage style benches for the yard, as well as fresh lavender sprays, dried everlasting bouquets, and various lavender crafts made by herself and her daughter. The crafts include sachets, lavender cards, wreaths, and handmade soap.

O'Dell has been at Lavender Park, on the old Nichols' farm, for three years. She notes that berries were grown there in times past, and it was also a dairy farm.

"It is a wonderful old place with a lot of charm," she says.

Most of her lavender plants are Grosso, but she does have a few other

varieties, and is adding pink Melissa this summer.

She used to have an antique shop in downtown Puyallup, and most of the antique dealers who will participate in the Aug. 8 sale are from that shop.

"I have been an antique person my whole life," she said. "It is amazing how much fun decorating is inside or outside when you bring in the antique pieces. It adds soul to whatever you are looking at."

She said she has always done crafts and makes wood planters and benches for sale.

O'Dell is adding blueberries and raspberries, and Lavender Park will be open to the public when various products are available to sell. She will put out signs, she said.

Her next project is painting wall murals on two or three of the outbuildings. One will be of lavender fields.

Look for signs at Key Center, or drive down Cramer to the entrance sign at the first driveway on the left.



BLACK BELT ACADEMY

Respect • Discipline • Attitude

VIP GUEST PASS

This VIP pass is good for 30 days, one full month of unrestricted Martial Arts Lessons, and includes a free uniform; a real value of \$100

6pm Mondays & Thursdays
at The Civic Center

Redeem This VIP Pass By
Calling Today!

(206) 949-9722

Ellis Accounting & Taxes

Enrolled Agents
Members of NSTP, WSTC, and NAEA

- Bookkeeping
- Payroll
- Notary
- Financial Statements
- Businesses



Personal & Business Taxes,
Big or small

We do them all.
253-858-4777

NEW LOCATION
9501 State Route 302, Suite 3
Gig Harbor, WA 98329

Purdy

We accept all
Medicare Part D
Plans

COST LESS
Prescriptions

Call for a
price quote.

"We will beat any competitors price."

14218 92nd Ave., NW Gig Harbor, WA 98329
(253) 857-7797

**Stop in for all your
Fun
Summertime
Needs**

KP resident honored

By Irene Torres, KP News

In true civic form, John Glennon arrived two hours early to help set up a party at the Home Port restaurant, unaware that it was all for him. The June 28 event was planned by Christine Ellis, Alvin Chaney and other friends, including Pam Morrison, Stacy Coe, Greg Calahan, and Libby Rittenhouse. It was a surprise celebration for Glennon to honor him for all he has done for the Key Peninsula and its citizens. Quickly, someone shooed him away to keep the secret until the party was ready.

At about 1:30 p.m., as overflow cars parked across the KP Highway on the property of Trixie Schick, Glennon arrived again and slowly made a path through the gathering crowd, meeting and greeting his way out to the beer garden. With a round of applause and a



GLENNON

collective shout of "Surprise!" the group of about 50 welcomed Glennon to his own party.

He hesitated a moment. His face flushed as he took a step backward and said, "Oh, s**t!" Then, "My heart is still strong. I can feel it." A few minutes later he waved his arm and shouted, "Hey, I want to thank you all."

A banner honoring Glennon hung on the fence. Everyone present had something to say about and to him. Sue Stuhaug said, "He's one heck of a Santa Claus."

For many years, Glennon has collected toys for children and dressed up as Santa, to bring smiles to their faces as he handed out the toys. Ron Brown said, "There's a whole lot to say, I don't know where to start."

Dennis Hoff said, "I remember him in his Camaro with the 'Silver Fox' license plate." Gesel Hoff said, "He'll always be the Silver Fox to me."

John Biggs described him as a "true KP character." Vicki Biggs said, "He's a much loved person on the KP. He's always willing to be a volunteer, to be involved.

“

He has helped this community in so many ways. Just yesterday, I saw him raking the yard at the Community Center.

— Annette Haase

”

He knows everybody." Stu Stuhaug said, "He's the only person I know with a cement (ferro concrete) sailboat."

As the celebration continued, Wally Johnson, owner of the Home Port, called Glennon forward to present a plaque in honor of his volunteerism. KP Community Services Executive Director, Penny Gazabat, presented him with a brass sign for his "office," which is the tool room at the KP Community Services Food Bank building.

Annette Haase said, "He has helped this community in so many ways. Just yesterday, I saw him raking the yard at the Community Center." Chuck Russom said, "He's our 'Man of the Year.'" Tim Shirley said, "My daughter has been a huge fan of John Glennon since we moved up here 14 years ago."

Joe and Maggie Steiner told their story on Glennon. "We had gone by Spencer Lake on the way back from the ocean and

stopped at the bar. John was there. He said, 'I'd appreciate it if you'd not let anybody know you saw me here.' We told him, 'Your secret is safe.' But we can tell it now that the statute of limitations is over."

A scrapbook was presented, showing Glennon in all stages of his life, including a photograph of him shaking hands with Queen Elizabeth. Ron Van Someren said Glennon had been a senior chief in the Navy during World War II. He served as a frogman where he had taken part in the Normandy invasion, disabling underwater mines. Paul Clark said, "He's a true American hero." Clark worked with Don Porter to produce a short film noir, "Return to Home," in which Glennon appears. At the premier of the movie on July 18, at the Key Peninsula Civic Center, Glennon received a lifetime achievement award before a group of nearly 80 attendees. "Community — nobody is better at it than John," Clark said.

Buying or Selling a Home?

Call the Ducky Ladies for the best move you will ever make!

1-888-314-5545 ext. 1

www.duckyladies.com

Drive Thru Feed

Open Every Day (Mon-Sat 9:30am-6pm, Sun 11am-6pm)

Get your Propane Here!

Bring In This Ad & Receive \$1.00 OFF

All Feed Products—Including Hay! (offer good thru 10/31/09)

I WILL MEET OR BEAT ANYONE'S PRICE WITHIN 30 MILES!
other only sell 90¢ longer - I sell 90¢ to 80¢
 (we'll meet up 80¢ if less than that 50¢)

EXAMPLES	90¢	\$16.90
Chicken Scratch	90¢	\$16.25
Yak Cobles	90¢	\$11.25
Breakfast Buffet (feeds everything)	75¢	\$14.90

SHOP AND COMPARE!!

Easy to Feed!!

16915 121st
 (Corner of Wright Bliss & HWY 302)
 KPN, Gig Harbor, WA
 253-884-3386

HERE'S A mouse trap that never needs re-setting. Of course, a man would have to empty the bucket every once in a while, but that shouldn't be too much of a hardship. A baking powder can, strung on a wire fastened to both sides of a pail, is covered with cooking fat, which is then sprinkled with grain, bread crumbs, cheese, or ground meat. The board is a ramp for the hungry little deacons to reach the feast on the baking powder can, which revolves when they climb aboard and dumps them into the pail, filled about a third with water.

Dick Raymond stands in the corn rows of his garden in Wauna. The 87 year old has been growing plants and flowers since childhood and wants to share his knowledge with others in the community.



Photo by Marsha Hart, KP News

KP gardener shares expertise

By Marsha Hart, KP News

As a child, Dick Raymond remembers helping shuck beans on the family farm in Massachusetts, growing and harvesting everything from beans to fruit. His family was of Swedish decent, and he grew up in a town of about 30 people.

Their farm and orchard provided for the eight children born in the family, and the only necessities bought were flour, salt, pepper and sugar, he said.

The 87-year-old Wauna resident said after a lifetime of gardening he wants to share his knowledge.

"We'll hold school here," he said. "It's good for people because they get to learn the right way to grow everything."

His home in Wauna is lined with flowerpots, front and back. His back yard features rows of tall corn, thick peas, summer squash, cherry trees, apple trees and a green house where he works his magic. The vivid purple clematis at the edge of his home was grown from a leaf

he took from a neighbor's plant, he said. He enjoys growing things from tiny seeds or leaves and watching the transformation.

The compost piles at the back of the garden are part of the secret. Raymond makes his own soil from yard clippings, pea pods, and just about any other organic material that his property produces. He mixes it with a bit of Styrofoam, he said, which makes the soil light.

Raymond had 29 acres of garden in Massachusetts, he said, and ran a roadside vegetable stand there. He said he enjoys experimenting with plants, and is always trying something new. With all of this experience and knowledge, he said he wants to pass it on to others so they can grow large healthy plants and beautiful flowers.

"They should call and tell me when they can come and I'll be here," he said.

You can reach Dick Raymond at 253-857-2809.

Country Expressions LLC
SUMMER ROOM SALE
 One room every two weeks
20% off entire contents
(food not included)
15% OFF ENTIRE PURCHASE
 One per customer - Not to be combined with room sale. Expires 8/31/09
 Open Daily - 12 noon - 5:30 pm
 14701 Purdy Drive N.W.
 Gig Harbor
(253) 853-1473

KEY COUNSELING
 Fully State Licensed & Certified
ALCOHOL AND DRUG INFORMATION SCHOOL
ASSESSMENTS & REFERRALS
OUTPATIENT TREATMENT
INDIVIDUAL & GROUP COUNSELING
 Don Tjossam, MS, CDP
 253-884-4860 253-884-2234
 Key Peninsula Health Center (Next to the library)
 6902 Key Peninsula Highway North
 Lelyston, WA 98349

3 bdrms./1.75 ba. \$245,000 MLS #29093565
Private & Peaceful
 Charming Rambler nestled in the woods w/acreage beyond fenced area. Heatpump, skylights, vaulted ceilings & hrdwd floors.
 AJ Milken
 Windermere R.E. Key Realty
 253-884-9637 primary
 253-318-8685 secondary

LAKEBAY ROOFING
 Pierce, Kitsap, and Mason Counties
 • RESIDENTIAL •
 • RE-ROOFING •
 SHAKE • TORCH DOWN • METAL
 COMPOSITION • CEDAR • SHINGLES
 FREE ESTIMATES
 884-2186 • Tom Rolfzen - Owner
 WN. ST. CONSTR.J.REG.LAKEBAY C22R1

El Sombrero
 Family Mexican Restaurant
 Since 1990

Mexican Mondays
 All You Can Eat Mexican Buffet \$9.99
 Lakebay Location Only

\$3 OFF Lunch
 Buy one lunch combination 1-16 and any two drinks at regular price and receive \$3.00 OFF the 2nd lunch combination 1-16

\$5 OFF Dinner
 Buy one dinner combination 1-24 and any two drinks at regular price and receive \$5.00 OFF the 2nd dinner combination 1-24

With certificate. Lunch served 11-3 mon.-Fri. One certificate per party. Dine-in only. No substitutions please. Not valid with any other offer. Valid now thru November 1, 2009.

Taco Tuesdays
 3pm - 8pm in the Cantina only
 (must be 21 or older)

15611 92nd St. • Lakebay 253.884.3707
 1397 Olney Ave • Port Orchard 360.895.1315
 www.elsombreromex.com

COMMUNITY WORKS

Submit calendar items to news@keypennews.com • Deadline 15th of the month

Aug 1 – Arts and music

Beyond the Borders with sights, sounds and tastes from a variety of cultures held at Longbranch Improvement Club from noon-6 p.m. This free festival features entertainment, an art show, specialty desserts, a beer and wine garden and vendors. 884-4807 or www.twowaters.org

Aug 3-7-British soccer camp

Key Pen Parks is holding British soccer camps at Volunteer Park. Camp for ages 3-4 is from 9-10 a.m. for a fee of \$60, camp for ages 4-5 is from 10:30-12 a.m. for \$75, and camp for ages 6-15 is from 1-3 p.m. for \$100. 884-9240

Aug. 6- Got art?

Be creative at the Key Center Library this summer by attending the “Got Art” program at 11 a.m. at the Key Center Library. Must register for ages 6 and up at 884-2242.

Aug. 6- Fuchsia club meets

The Lakebay Fuchsia Society meets at 7 p.m. at the Key Center Library. Mywanwy, 884-2283

Aug. 7-9- Reiki training

Bob and Sharon Hill will host a Reiki One and Reiki Two training at their home near Key Center. The instructor will be Joe Gundy, who has taught Reiki since the early 80’s and has led classes throughout the United States, Europe and South America. Reiki is a hands-on healing method for others, yourself

or pets. Class will include talk, demonstrations, and practice. Bob Hill, 884-4741 or sharon147@centurytel.net

August 8-Parade and fun day

Key Peninsula Civic Center hosts the Crazy Key Parade and Summer Family Fun Day from 10 a.m. to 5 p.m. at the civic center. This fun, family-friendly event will

include a parade, entertainment, farmers market and craft fair, fish tank, beer garden, petting zoo, games, food and more. For parade entry forms, vendor applications or sponsorship information, visit www.kpciviccenter.org, call Key Peninsula Civic Center at 884-3456 or email kpciviccenter@centurytel.net.

Aug. 11-13-Art courses

Artist Christopher Young offers a three-day intensive series of drawing and painting lessons, demonstrations and discussions for all levels of artists, designers and those passionate for the arts at his Longbranch home, Madrone Lodge. These courses provide an opportunity to expand upon techniques, materials and process. Participants are encouraged to bring existing work for feedback.

Enrollment is limited and costs \$390 for the 3-day workshop, including lunch each day. Materials are not included; a suggested list is available.

Day 1 will feature “Principles of Figure Drawing”, day 2 will be “Watercolor Techniques and Materials” and day 3 will be “Demystifying Oil Painting and Art”. Class is from 10 a.m.-4 p.m. daily.

Christopher Young taught at the Parsons School of Design and the Graduate Design Department at New York University for over a decade and brings his experience and passion to each lesson.

For information or registration: twowaters.org/TWAA/education/classes2.shtm or learn about the artist at christopheryoungstudio.com

Aug. 12- Candidate deadline

The Key Peninsula Community Council is seeking candidates to run in its September election and the deadline for submission is Aug. 12. Anyone interested in running can pick up a form at KP Farmers Market on Sundays, Key Pen Parks (at Volunteer Park) M-F, 8 a.m. to 4:30 p.m. KP Civic Center M-F, 10 a.m. to 5 p.m. or go online to www.keycouncil.org, email bschoos@keycouncil.org, or call 255-9613. Completed forms can be returned to the same sites or bring them to the KPCC

meeting on Aug. 12 at the Key Center Fire Station at 7 p.m.; the special topic is “Property Tax”. Get involved!

Aug. 14- Library fun

The “Magic Suitcase” will be presented at 2:30 p.m. for ages 6 and up at the KC Library. Explore the world through clues, artifacts, stories and art projects with Live Paint LLC, a creative arts company for children.

Aug. 15 – Communities in Schools

Communities in Schools holds its fifth annual “Denim to Diamonds” fundraiser at 5 p.m. at Rosedale Gardens in Gig Harbor. Cost is \$50 per seat. There will be live entertainment, live and silent auctions. Proceeds benefit educational programs for Key Peninsula public schools, and six others in the Peninsula School District. For more information, Colleen Speer or Laurel Schultz 884-5733

Aug. 22-23-Bike ride

RAPSody sponsors a 170-mile loop on the scenic back roads and bike trails of five counties while supporting statewide bicycle advocacy and education on the Ride Around Puget Sound. The loop starts and ends at Tacoma Community College. At Shelton, the halfway point, there’s free indoor and outdoor camping and a jazz quartet at Shelton High School. Food is provided at the rest stops.

Registration includes souvenir socks, mechanical and ride support, luggage transport, free showers and ice cream bars to celebrate the finish on Sunday. Riders can complete in the event in one or two days. RAPSody is sponsored by five Puget Sound area bike clubs in support of the Bicycle Alliance of Washington. Cost is \$80. Participants must register by Aug. 16. For more information, visit www.rapsodybikeride.com or 206-577-6999 or register online: www.active.com.

Aug. 29-Fun run

WayPoint hosts a summer fun run at

Penrose Point State Park at 9:30 a.m. Cost is \$12 per person, which includes a t-shirt. Proceeds benefit youth activities. Walkers are welcome. Register online at www.waypoint-church.org/funrun

Sept. 19-Musical presentation

A spirit-filled Christian musical collaboration will be performed in harmony with area churches, including a free presentation by the ‘Red Barn’ held at the Longbranch Improvement Club, noon - 4 p.m. Gary Viers (253) 414-5123 or gviers@earthlink.net

Tuesdays-TOPS #1325

Take-Off Pounds Sensibly meets at 9 a.m. at Key Peninsula Lutheran Church. Free child care, fun and support are provided. 884-2554

Wednesdays- Walks scheduled

Key Peninsula Parks sponsors Wednesday Walkers each week from 10-11:30 a.m. at different spots on a rotating schedule. Adults 18 and over (dogs must be on a leash) are welcome to meet on Aug. 5 at Maple Hollow (48th St/Van Beek Rd in Lakebay) for a difficult walk. Aug. 12 is an easy walk at Volunteer Park. On Aug. 19 an easy/moderate walk will be at Penrose State Park. Rocky Creek (SR 302/150th Ave) will be an easy/moderate walk on Aug. 26. The walks continue to rotate on the above schedule. Chad, 884-9240 or www.keypenparks.com

Thursdays- Toastmasters meet

The Toastmasters meet from 8-9 a.m. at Key Center Library. Join the fun and improve your speaking ability.

Thursdays- Senior Society meets

The Key Peninsula Senior Society, aka Yesterday’s Teenagers, meet at 11:30 a.m. for a potluck, fellowship and games at the

OFF THE KEY

Tuesdays, Aug. 4, 11, 18, & 25

'Summer Sounds at Skansie' offers free concerts in the park from 6:30-8 p.m. Bring a blanket or a chair. www.gigharborguide.com

Play presented - Aug. 7

Disney's "Beauty and the Beast" will be presented at the newly remodeled Paradise Theatre. Show times for Fridays and Saturdays is 7:30 p.m. and on Sundays at 3 p.m. Tickets are available online at www.paradisetheatre.org or 851-7529.

**Aug. 17-21-
String camp**

The Peninsula Youth Orchestra String Camp will be held Aug. 17-21. The camp theme is "The Lighter Side of Strings" and will feature daily rehearsals, breaks, a "Pops" performance by the Aurora String Quartet and a concert performance.

Students, 9-19 with at least one year of string experience, may apply for the camp online at www.harborpyo.org or call 253-534-5384.

The public is invited to a free concert performance on Aug. 20 at 6 p.m. at the Uptown Pavilion in Gig Harbor.

**Aug. 29-
Motorcycle event**

The "Hogs for Dogs" motorcycle Dice Run riders will enjoy a scenic ride along the shores of Puget Sound after registration at 8:30 a.m. After the ride enjoy great food at the Floatation Device in Purdy and listen to the sounds of Loose Gravel and Quarry from 3-6 p.m. The event is open to the public and any rider is welcome. Those not riding are welcome to come to the Floatation Device anytime after 3 p.m. to listen to the band, participate in the 50/50 raffle, enjoy the motorcycles and food and drink available for sale.

All proceeds benefit Coalition: HUMANe, an organization dedicated to a goal of no more homeless pets in our community. Fee is \$25/rider and \$20/passenger. Ride starts at 14511 Sherman Drive N.W, Gig Harbor. Info: Dave McCormick

civic center. All are welcome. 884-4981

Fridays-Outdoor movies

CenturyTel and the Children's Home Society sponsor Cinema under the Stars at dusk. This year pre-movie entertainment is available. On Aug. 7 "Journey to the Center of the Earth" in 3D will be preceded by Earth Bingo sponsored by Sunnycrest Nursery. Aug. 14 a Taekwando demonstration by the Black Belt Academy will be before the "Kung Fu Panda" movie. On Aug. 21 "The Express" will be shown after skills, drills and plays demonstrated by Peninsula Youth Football and on Aug. 28 Disney Trivia sponsored by El Sombrero will be before the movie "Bedtime Stories". On the Way concessions will be open. Bring a blanket and enjoy a movie at Volunteer Park. Canned or boxed food for the local food bank is greatly appreciated.

Saturdays-Writers meet

The Writers' Guild meets from 9-11 a.m. at Key Center Library; 884-6455

Sundays- Farmers Market

The Farmers' Market is open noon-4 p.m. in O'Callahan's parking lot. Meet the KPFM farmers, who grow their produce on the Key Peninsula, at the market and buy local products. Master Gardeners will join "Farmers Market Week" on Aug. 2. Composting information will be available on Aug. 16. See what's fresh weekly at the market or sign up for the newsletter at www.kpfarmers-market.org

To submit

To submit community events, email letters to news@keypennews.com, or mail to P.O. Box 3, Vaughn WA 98394. Please include full name and contact information for verification.



Hugh McMillan/KP News

Key Peninsula Lions Club president George Robison and Lion Bill Macaras continue the club's volunteer work on the KP Volunteer Park retaining wall/bleachers seating in the soon-to-be park's amphitheater. KP Metro Parks' staff member Jeffrey Winden unloads a front loader with soil to fill in the area behind the concrete block retaining wall; he is assisted by Dylan Roberts (not in photo).

Lions Club invite public

The Key Peninsula Lions Club which meets the first and third Wednesdays of each month in the VFW Room of the KP Civic Center in Vaughn invites all interested parties to attend its meetings and to consider joining the club, the motto which is, "We Serve." Lions are the world's largest service organization and, among other things, are dedicated to sight preservation, hearing preservation and diabetes and drug awareness. Locally, the KP Lions sponsor the annual KP Citizens of Year Awards banquet and the annual Volksmarch in Penrose Point State Park. The club also supports KP parks, Little League Baseball, scholarships, Boy Scouts, and provides assistance to those in need. For more information, please visit the club's web site at: <http://keypeninsulawa.lionwap.org> or call 253-853-2721 or 253-884-3319.

Callahan's

Pub & Grill

Daily Specials

Breakfast Everyday	8 am-1 pm
~ Every Saturday - BBQ in the Garden ~	
Sunday Breakfast Buffet	10 am-1

Every Sunday

Breakfast Buffet \$9.99
 Bottomless Mimosas \$6.50
 Music in the Beergarden 1pm-4pm
 Fresh Squeezed Fruit Drinks at Outside Bar

Live Music
 Tuesdays, Fridays, Saturdays & Sundays
 (call for info or visit: callahanpub.com)

Karaoke
 Every Sunday 7-11 pm

Open Sunday-Thursdays 8 am-11 pm
 Friday & Saturday 8 am-1:30 am

884-9766
callahanpub.com

AUGUST PUBLIC MEETINGS

- KP Metro Parks, Aug. 10, 7:30 p.m. at Volunteer Park Annex
- Fire District 16, Aug. 11 & 25, 3 p.m. at Key Center Fire Station
- Key Peninsula Community Council, Aug. 12, 6:30 p.m.-business, 7 p.m.-presentation on Property Taxes at Key Center Fire Station
- Peninsula School District Board, Aug. 27, regular meeting, 6 p.m. at district office, 14105 62nd Ave NW, Gig Harbor



KEY PENINSULA FIRE DEPARTMENT

"SERVICE WITH PRIDE AND COMPASSION"

WWW.KEYPENINSULAFIRE.ORG

A Hot Tip...

By Anna de Jesus Lopez

Your best defense against heat-related illnesses and emergencies is prevention. Staying cool and making simple changes in your fluid intake, activities, and clothing during hot weather can help you remain safe and healthy. Wear loose-fitting, lightweight clothing in hot weather. Rest frequently and seek shade when possible. Avoid exercise or strenuous physical activity outside during hot or humid weather. Drink plenty of fluids every day. Drink more fluids before, during, and after physical activity. Be especially careful to avoid overheating if you are taking drugs that impair heat regulation, or if you are overweight or elderly.

Heat illnesses and emergencies fall into three categories of increasing severity: heat cramps, heat exhaustion, and heat stroke.

Heat Cramps

Heat cramps are muscular pain and spasms due to heavy exertion. They usually involve the abdominal muscles or legs. It is generally thought this condition is caused by loss of water and salt through sweating.

First Aid: Get to a cool place. If they can tolerate it, give one-half glass of water every 15 minutes. Heat cramps can usually be avoided by increasing fluid (non alcoholic) intake when active in hot weather.

Heat Exhaustion

Heat exhaustion is less dangerous than heat stroke.

It is caused by fluid loss which in turn causes blood flow to decrease in vital organs, resulting in a form of shock.

Signs & Symptoms: cool, pale and moist skin, heavy sweating, dilated pupils (wide), headache, nausea, dizziness and vomiting. Body temperature will be near normal.

First Aid: Get the victim out of the heat and into a cool place. Place in the shock position, lying on the back with feet raised. Remove or loosen clothing. Cool by fanning or applying cold packs or wet towels or sheets. If conscious,



give water to drink every 15 minutes. **IMPORTANT!** While heat exhaustion is not a life-threatening emergency, it can progress to heat stroke if left untreated!

Heat Stroke

This is the most serious type of heat illness and it is an emergency. It is life threatening and requires immediate and aggressive treatment! Heat stroke occurs when the body's heat regulating mechanism fails. The body temperature rises so high that brain damage and death may result unless the body is cooled quickly.

Signs & Symptoms: The victim's skin is hot, red and usually dry because they have stopped sweating. Pupils are very small, a body temperature of 102 degrees or higher. The person may also exhibit irrational behavior, extreme confusion, rapid & shallow breathing, rapid & weak pulse, seizure, and unconsciousness.

First Aid: Remember, Heat Stroke is a life-threatening emergency and requires prompt action! Summon professional help, CALL 911. Get the victim into a cool place. **COOL THE VICTIM AS QUICKLY AS POSSIBLE IN ANY MANNER POSSIBLE!**

Place the victim into a bathtub of cool water, wrap in wet sheets, place them in an air conditioned room. Do not give victim anything by mouth. Treat for shock.



MEMBER SPOTLIGHT

Mike Riegle

Mike joined our department in 1989 as volunteer firefighter. He was hired in September 1991 and has worked his way up through the ranks. He came to us as a seasoned Army medic. As a fun note, Mike has delivered more babies in the back of the ambulance than anyone else in the department.



Calendar of Events

Our new meeting room is available for public use. Contact Vanessa to schedule at 253-884-2222

Commissioner's Mtgs @ 3 pm	Aug. 11th & 25th
CPR/1st Aid	Aug. 1st
Krazy Key Parade	Aug 8th
Summer Family Fun Day	Aug 8th

SPARKY SAYS:

Beat the heat, retreat.

Stay in the shade during the hottest time, midday.



FIRE YES!

The Key Peninsula Fire Department needs **YOU** to help us to help **YOU!**

August 18, Vote YES !

to continue funding fire and emergency medical services!

Cost: **\$66 per year on a \$300,000 home.**

Exceeding other fire districts, PCFD 16 provides:
Ambulance transport to medical facilities, Water rescue,
High angle rescue, Confined space rescue and Wildland firefighting.

Support of this levy will enable PCFD 16 to continue these services at current levels.

Five consecutive State audits give
PCFD 16 PERFECT PERFORMANCE RATINGS.

PCFD 16 employs a stringent drug enforcement policy
endorsed by Washington State Council of Firefighters.

PCFD 16 firefighters must pass International Association of Fire Chiefs &
International Association of Firefighters' joint wellness program physical standards.

Our 27 career and 30 volunteer firefighter/EMT's
meet or exceed national NFPA standards.

Help us to help you!

Krazy Key Parade and Family Fun Day schedule of events

STAFF REPORTS

The Krazy Key Parade and Summer Family Fun Day will kick off with a parade at 10 a.m. Aug. 8 and the day is filled with many activities for the entire family to enjoy.

Schedule of Events

Kids games begin at 10:45 a.m. with the help of KP Baptist Church, WayPoint Church, and staff from the Key Center Library.

10:45-11:30 a.m. Penny and candy scramble

11:30 to noon – Limbo

noon – 12:30 p.m. Three-legged race

12:30- 1:15- Farmers dress up relay- where kids dress up to be farmer and then undress quickly, pass the clothing to another team member, and winning team wins a prize.

1:15-2 Tug of war

2:30-3 Sack race

3-3:30 Balloon toss

3:30-4:15 Monster tag

Farmers Market, fish pond with 200 fish, vendors, food and the beer garden open at 10 a.m. and continue until 5 p.m.

Entertainment begins at 10:45 a.m.

Awards and the raffle will be announced from 4 to 5 p.m.

DJ Kip, KP Cloggers will perform at 12:30 p.m. Key Singers 1:30 p.m., Conga Drummers 2:30 p.m., Don Allard from 3 to 5 p.m.

GRAVEL, DRAIN ROCK & TOPSOIL

Key Peninsula, Port Orchard, Bremerton, Silverdale, Olalla and Gig Harbor

Special Your Choice

\$375

Per Load, Includes
Tax & Delivery



Call Today! (253) 318-8166

Get-R-Done!!

1	5/8 or 3/4 Minus Crushed Gravel for driveways or walkways 15 tons=30,000 lbs.
2	3/4 Clean Crushed Gravel for driveways or walkways 15 tons=30,000 lbs.
3	1 1/2 Minus Crushed Gravel for driveways or walkways 15 tons=30,000 lbs.
4	1 1/2 Clean Crushed Gravel for driveways or walkways 15 tons=30,000 lbs.
5	Dark Topsoil 4-way mix = 10 cubic yards
6	Pea Gravel 15 tons=30,000 lbs
7	7/8 or 1 1/8 inch Drain Rock 15 tons=30,000 lbs

a delivery charge may be added to areas not listed above

KEY PEN PARKS



www.keypenparks.com ~ 253-884-9240
answers@keypenparks.com

SUMMER CAMPS

CAMP	AGES	TIME	DAYS	DATE	LOCATION	FEE
Cheer	5-6	12-1 pm	Mon-Fri	July 6-10	Volunteer Park	\$ 35
Cheer	7-12	10- 11:30am	Mon-Fri	July 6-10	Volunteer Park	\$ 40
Skate	4-12	10am-12 pm	Mon-Fri	July 27-31	Vol. Pk Sk Pk	\$ 50
Skate	10-15	12:30-2:30pm	Mon-Fri	July 27-31	Vol. Pk Sk Pk	\$ 50
British Soccer	3-4	9-10 am	Mon-Fri	Aug 3-7	Volunteer Park	\$ 50
British Soccer	4-5	10:30- 12pm	Mon-Fri	Aug 3-7	Volunteer Park	\$ 75
British Soccer	6-15	1-3 pm	Mon-Fri	Aug 3-7	Volunteer Park	\$ 100

Cheertastic Cheer Camp

Come be a cheerleader for a week! Participants will have the opportunity to learn all aspects of cheerleading including motions, jumps, cheers, dances and stunting. There will also be a performance at the end of the week! Campers should wear sweats or shorts and tennis shoes, and bring a snack and drink each day. T shirt and pompons are included. Min 10, Max 20 per age group.

Skate Camp

Key Pen Parks and All A Board Skate Shop present the 2009 Skate camp at Volunteer Park. Come learn the fundamentals of skateboarding, practice safe skating and have a blast! Min 10, Max 20 per age group. Helmets Required.

Cinema Under The Stars Every Friday in August

There is no better place to enjoy a movie this summer than Volunteer Park! Grab a blanket and come out for an unforgettable evening. Bring the family and we'll supply the stars! Or The Way Concessions will be open for movie snacks and drinks. A suggested donation of \$1.00 and a can of food for Key Peninsula Community Services is appreciated. Cinema under the stars is sponsored by CenturyTel.

August 7th	Journey to the Center of the Earth in 3D
August 14th	Kung Fu Panda
August 21st	The Express
August 28th	Bedtime Stories

New this Year: Pre-Cinema Entertainment!

Audience members are invited to participate in our games and demonstrations before Cinema Under the Stars, while even getting the chance to win something special! Come prepared to participate or just enjoy the entertainment before the movie!

August 7th	Earth BINGO, sponsored by Sunnycrest Nursery
August 14th	Taekwondo demonstration by Black Belt Academy
August 21st	Skills, Drills and Plays demonstration by Peninsula Youth Football
August 28th	Disney Trivia, sponsored by El Sombbrero

Key Pen Parks

"The key to your next adventure"



Do you have personal tax questions?

We have the answers for you!

Contact us today about:

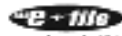
- ▶ Individual & Corporate Tax Returns
- ▶ Monthly Bookkeeping, Payroll & Payroll
- ▶ Financial Statements
- ▶ Business Consulting
- ▶ Salary Advice
- ▶ Home & Auto Services
- ▶ Retirement Consulting
- ▶ Real Estate Accounting

Evening & Saturday Appointments Available

(253) 884-3566

www.myr-mar.com

MYR Myr-Mar Accounting Service, Inc.
MAR Mary & Myrtle Kabor, CTP
10215 139th Avenue NPM
Gig Harbor, WA 98258



(From MUD, Page 1)

open and your skeletons come walking out. It's too bad it didn't come out 12 years ago."

"The letter came to light when there was a coffee cup incident and through that process a lot of people were outraged because I was defending my wife," Yanity said.

The document surfaced then, Yanity said, and he got about six copies of it left on his car, or handed to him in person.

Bosch's opponent for the No. 2 seat on the fire commission, Claudia Jones, had no comment about the letter or police report, but said she sees no need for such information to be floating around.

Ed Taylor, a former fire commissioner, and current member of the Key Peninsula Civic Center board also received a copy of the document.

"It would have been better received by me if the person who sent it had identified themselves," Taylor said, "but I also understand because of Bosch's past vindictive history why they wouldn't want to do that. I feel that he should resign and I've had a history of calling for his resignation before. I didn't send the report or letter, I received it, but it is just one of many reasons why he should resign."

"Return to Home" premier sells out

By Rick Sorrels
Special to the KP News

Ticket sales were limited, and sold out within a couple of days of their release for "Return to Home," an independent movie that premiered July 18 at the Key Peninsula Civic Center.

The 36 actors, film crew and their families and friends gave rave reviews for the film, which included 20 minutes of story, and 10 minutes of outtakes.

"I loved it. It was hilarious," said John Bischoff. "I'd describe it as a comedy-mystery."

"It was comical and kind of goofy," said Lisa Larson.

"It was really cool, a really good job," said Alvin Chaney. "I was surprised at the quality."

"Excellent, very funny," said Misty Jones.

"The out-takes were great," said Andy and Judy Isaksen.

Don Porter, producer of the movie, said the movie idea evolved through happenstance and serendipity into a basic concept in his mind.

"The whole thing is about neighborhood smiles," said Porter. "There are a lot of in-jokes."

"The original idea was for a 'film noir', which is French for 'the dark side'. An example of 'darkside' is a period piece about a private eye walking down a dark alley without backup, shot with black and white film. Paul tweaked it with a different flavor, changing it into more of a comedy."

There were no professional actors or crew on this film.

"Using all local amateur talent presented some problems," said Paul Clark, who wrote the screenplay and directed and edited the film. "I would call this a murder mystery spoof, with a dark 1940s look done on purpose. It worked out well."

The movie is filled with Key Peninsula in-jokes, so some of that was lost on Rosina Vertz who lives in South Kitsap.

However, the audience, which was composed almost entirely of local residents, found the in-jokes hilarious.

By using local residents in the film, both Clark and Porter said "Return to

Home," is unique and significant for the area.

"All production and acting for 'Return to Home' was done locally using local talent. This makes this production a first in that regard, and very special for the local residents."

Plans are to enter the film in the Gig Harbor Film Festival in September. The Bremerton Film Festival will follow, provided residency requirements are met. The big competition will be the Seattle Film Festival next summer.

Don Porter is looking forward to a "big rest" as the excitement winds down.

Paul Clark just landed a contract editing a music video for a major country western singer and the World Orphans Organization, which is scheduled to be released at the NASCAR opening next summer.

A DVD of "Return to Home" can be ordered from dphomewa@yahoo.com for \$20.

The April issue of KP News contains a related story about the making of the movie that can be viewed on line at www.keypennews.com.

Since



1989

We have the equipment and expertise to remove *any* tree from *any* location without impact to surrounding areas.

We specialize in trimming, pruning & deadwood of large evergreen trees for wind-sail reduction, esthetics, health & safety

We offer **FREE** safety inspections of Maple, Alder & any other trees.
(Be prepared for winter storms)



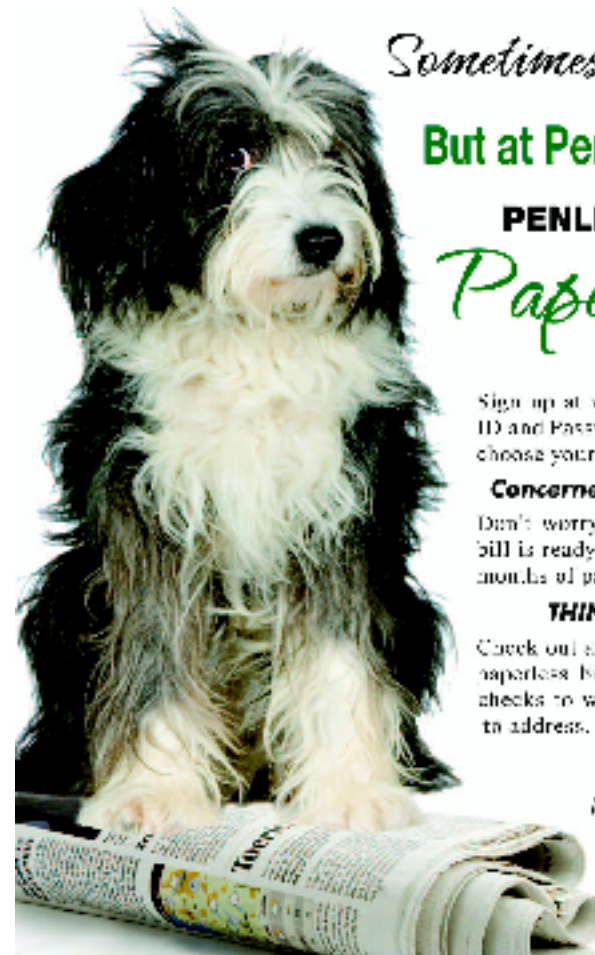
We pride ourselves on our skill, expertise and above all—our service!!!

Serving Gig Harbor, Key Peninsula & Kitsap County

WWW.ARCHONTREE.COM

If You Want the BEST... Call **253-858-8733**

Free Estimates • Licensed • Insured



Sometimes you need paper...

But at PenLight You Don't!

PENLIGHT INTRODUCES

Paperless **BILLING**

Here's How it Works

Sign up at www.penlight.org by creating a Login ID and Password, view your bill electronically, and choose your favorite way to pay.

Concerned you'll forget about your bill?

Don't worry, we'll send you an email when your bill is ready to view. You'll also have access to 12 months of past billing statements.

THINK OUTSIDE THE ENVELOPE

Check out all of the benefits of online bill pay and paperless billing - no paper to keep track of, no checks to write, no stamps to stick, no envelopes to address.

Sign up today!

It's easy, free and using less paper is better for the environment.

Peninsula Light Co.
The Power of Less

Call (253) 857-5950 or visit www.penlight.org for more information!

Longbranch celebrates "50 Years Afloat"



By Ron Cameron, Special to the KP News

Longbranch will not soon forget the beautiful warm, sunny day, which graced its celebration of "50 Years Afloat" for the Longbranch Marina's dock.

It started early in the morning with a full course breakfast enjoyed by an estimated 200 well wishers who came and went and hailed from the Key Peninsula and as far away as California. Among notables attending the dock dedication were Washington State Senator, Derek Kilmer and Pierce County Council member, Terry Lee. Toward noon, Marina dockmaster Mark Jones held the audience in awe with a history of all that went into the making of the marina.

An antique car show on the grounds of the Longbranch Improvement Club played to a happy audience of car aficionados. There was bingo, an egg toss, watermelon speed eating, a crab race, a life ring toss competition, and dinghy races. The day ended with a dinner, auction, and dance with music by The Daily Flash. Dave Wickland declared it to have been, "a delight, fun, and even more successful than we could imagine."



*Scholar Bells
July 18th*

**Longbranch
Community Church**
www.longbranchchurch.net
Come and join us for
Interdenominational Services
Sunday Service 11:00 am
16518 46th St. KPS, Longbranch
253-884-9339
Fellowship Hall available for rental!

THE HOMEPOR
**RESTAURANT &
LOUNGE**
Good Friends, Good Food. Good Times

Monday	Tuesday	Friday
Italian Night	Tacos	Prime Rib

2009 New at
THE HOMEPOR
Early Bird Special 2pm-5pm
3 dinner choices daily
w/ dessert


\$8.95

884-3743

\$8.95

HOME

EXCAVATING & DOZING



**NATURE TRAILS,
BEACH ACCESS,
SITE CLEARING & PREP.,
LOGGING,
ROCK WALLS & STEPS,
DRAINAGE SYSTEMS,
ROAD GRADING,
DEMOLITION,
STUMP REMOVAL,
GRAVEL &
TOPSOIL DELIVERIES,
& MUCH MORE.**

DIFFICULT JOBS ARE OUR SPECIALTY!

(253)884-6798

Peninsula Light Co.

a mutual corporation • since 1925

The power to be...

Two New Conservation Programs

Receive \$30.00 when you recycle
your old refrigerator or freezer



Did you know that running an extra refrigerator / freezer in your house can add hundreds to your utility bill over the year? That is why PenLight has teamed with JACO Environmental who will come to your house, pick up your working refrigerator or freezer, and send you a check for \$30.00!

To sign up for the program visit our website (www.penlight.org) or set up a time for pick up with JACO directly at 1-800-299-7573.

Free Duct Sealing for Qualifying Manufactured Homes

Over time, the duct work throughout your house may be doing more to heat crawl spaces and unfinished living space. This leads to high energy bills, and poor heating and air circulation. PenLight members who live in qualifying manufactured homes now qualify for free ductwork testing and sealing. To see if your manufactured home qualifies, contact eStarNW at 360.229.2852



For more information, or questions related to conservation / energy efficiency contact PenLight at 253.857.5950 or email: EnergySpecialist@penlight.org

Free Admission!



Krazy Key Parade
Summer Family Fun Day
SATURDAY, AUGUST 8
Parade 10^{AM} * Fun & Games * Til 5^{PM}
17010 S. Vaughn Rd. in Vaughn

* **FARMERS MARKET * GAMES**
CRAFT FAIR * PETTING ZOO
FISH POND * BEER GARDEN
Music, Food & Fun!

GOLD SPONSORS...




SILVER SPONSORS...




BRONZE SPONSORS...

Key Peninsula Community Council
Lakebay Community Church
Merrill Gardens at Gig Harbor
Ord Realty Group-Keller Williams

253.884.3456
WWW.KPCIVICCENTER.ORG



(From ALPACA, Page 1)

available in lightweight to heavy, is comparable in warmth to polar fleece.

Felting is basically tangling the fibers and then shrinking them so they will not pull apart. Her product is superior to traditional felt.

She constructs hats, purses, decorative pieces and do-it-yourself kits for her shows but also has created jackets, scarves, and other items.

Hats and some of the decorative objects are formed by using hot soapy water and her hands to conform to the desired shape.

"Every one is different," she says. She'll get an idea for a product, look at her extensive array of materials, and determine her next project.

She collects baubles, ribbons, hat bands and fabric for decoration, or can use some provided by a customer for a made-to-order piece.

The felted fabric is available in 4-yard lengths that are 35-38 inches wide. These laminated fabrics are alpaca fibers felted to white or black silk chiffon.

Leyden wasn't satisfied with some of the tools she found available to crafters. She asked Peter Green, a man in Canada

who built small commercial carders, to make her a large one.

"It's a prototype," he told her, but she marvels at all the artistic effort he put into it.

"My finished product is totally different, using this carder," she says.

Leyden says she can shear and spin a pound of fleece, put three batts together to make five yards of fabric - shrunk and finished to four yards - in an afternoon.

One of Leyden's goals was to make the alpacas "self-sufficient." It's taken seven years to have them "pay their own way," but she now sells enough products to do so.

"They have an easy life here," she says, and notes they are easy to train and remember well.

She once wanted to be a veterinarian, was always interested in science, but also in various art forms. She now combines her interests in being a Felt Craftsman and Alpaca Farmer. Her graphic artist training comes in handy when she's making her own tags and printing what she needs for her business.

To learn more about Leyden, the animals and her products, check her website - www.longbranchfiber.com and plan to visit her at the LIC Fiber Arts Show on October 3.

**1st Time Home Buyers & Nonhome Owners In The Past 3 Years
Find Out How To Take Advantage Of Low Rates & Home Prices**

Free home buyers seminar by top mortgage professionals

Key Center Fire Station 8-6-09 at 6:00 pm

Lakebay Fire Station 8-13-09 at 6:00 pm

For more information call:

Wendy Bateman
253-208-1281



Sound Mortgage, Inc.

Mike England
206-271-3219

THINKING ABOUT A REVERSE MORTGAGE?

Call Bek with your questions!



Bek Ashby
Mortgage Loan Officer

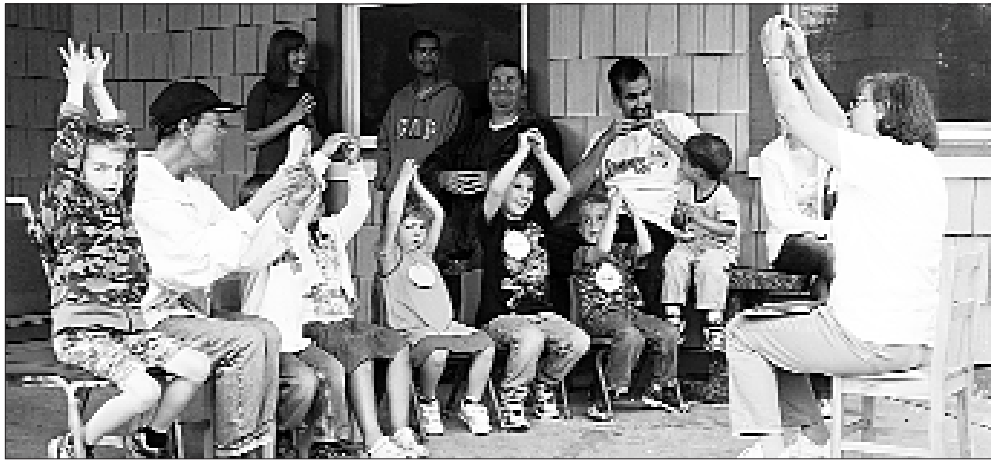
Bank Professional Since 1968

Specializing in:
Reverse Mortgages • FHA/VA
Serving the Key Peninsula Since 2004

360.731.0778

Lic. #510-LO-34578





Kinder Kamp instructor Gail Mitchell leads a cluster of pre-schoolers and kindergartners and a scattering of adults in "Story Time" for a raucous, animated rendition of "Tsy Bitsy Spider."

Summer Fun with CHS

By Hugh McMillan, KP News

The flyer announced, "Pet Day, Thursday, July 9." It established that "Pet Day" is the first of what Children's Home Society leaders hope to make an annual part of its Summer Fun event. The kids – even the adults – were excited and very participatory in hands-on fun.

"We were pleased that everyone seemed to have a great experience," said Jud Morris, program manager for CHS and Key Peninsula Family Resource Center.

The week of July 13 - 15, camp was held on the grounds of Evergreen Elementary and Leonard and Loretta Hawkins, the "teepee people," set up a bona fide replica of a teepee and dressed in period costumes.

Harry Oda, "the flintknapper," demonstrated as he did last summer how Native Americans fashioned arrowheads and tools out of obsidian and other stones.

Other activities included writing with feather quills, dying yarns and plant-based materials with berry juices, and bird watching lessons.

July 16 Summer Fun campers toured, snacked and played in the field at Creviston Valley Farm.

All sessions were from 9:00 am – noon.

Summer Fun's last week, July 20 – 23, was at Camp Soundview, where the kids enjoyed water activities, drumming, volleyball, nature walks, beach walks, beach art, beach wildlife discovery and education, hikes, fun games, and a barbeque.

Soundview is located, "on the left almost at the end of the KP Highway South towards Devil's Head," said Morris.

Cost of the camps is \$16 per week, which covers materials, instructions and snacks. Scholarships were available. Summer Camp is for children kindergarten through fifth grade.

Morris can be reached at 884-5433.



Above, In the Key Peninsula Historical Society Museum, Summer Fun kids Roman Turcak, Brandon Miller, Jonathan Lique, Heather Anderson, Tara Miller, adult volunteer instructor Marleis Van Cise, Merrilee Miller and Cerrinna Frank examine a pioneer-age planer machine.



Left, Austin Skinner gets up close and friendly with Cameron, Nate, and Haley Roncevich's kitty who is so new, he doesn't have a name.

Photos by Hugh McMillan

Grand Opening
July 1st

Roadhouse **R** on the Hill

Come join us for
Great Family Dining!

3015 254th Ave. S.
2010L
Lakeland, WA 98413
253 884 1900
roadhouseonthehill.com

Restaurant
Lunch - 11:00 am - 2:00 pm
Evening - 5:00 pm - 10:00 pm

Lounge
Star, Tea & Web 11 am - 11 pm
Live Sit 11 am - 12 am
Close at roadhouseonthehill.com

Just as our summer has finally warmed up,
It seems to be really too cruel
To point out that the time is soon coming up
To get ready for "Back to School"

Come in and see how we can help.

ANGEL GUILD THRIFT SHOP
in the Key Center Corral
253-884-9333 - angelguild49013@hotmail.com
Open Wednesday through Saturday 10:00 AM to 4:00 PM
The Angel Guild Thrift Shop is a not-for-profit organization and all proceeds will go to our organization.

EXCLUSIVELY PRESENTED BY
Windermere Real Estate

**ZERO DOWN LOAN
PROGRAMS AVAILABLE**
It's a great time to buy a home!



KEY PENINSULA \$77,000
This 2 bedroom, 1 bath home is located a stones throw from Purdy & Hwy 16. With over 1 acre & a private setting the possibilities are endless here. Fruit trees & garden space round out this perfect package!
Dallas Amick & Janette Weister
253-857-3304 #29 094007



FILUCY BAY \$174,950
Fixer with old fashion charm, needs remodeling. Views from the wrap around deck, 130 ft of oove waterfront across the street & a short walk to the Longbranch Marina where you can enjoy fishing & boating.
Dottie Mazza
253-857-3304 #29 086272



PALMER LAKE \$189,950
Many possibilities here- 2 garages, 3 bedrooms, 2.5 baths & over 1900 sq ft. This cozy rambler sits on a large corner lot. Just in time to enjoy some summer fun at this private lake community with picnic & swimming area.
Dottie Mazza
253-857-3304 #29 083459



GIG HARBOR \$195,000
Ready to start your own farm? Have plans for a dream home? Here's your opportunity to bring in the horses & live on this beautiful, private & secluded property while you build your dream home. Don't miss the sheet rocked & finished barn with full loft.
Cinda Baldwin
253-857-3304 #29 089825



KEY PENINSULA \$245,000
So private & peaceful nestled in the forest. Excellent quality & premium condition. Careful consideration in updated features: hardwood floors, walled ceilings, skylights, antique woodstove, heat pump with AC, circular drive & more. Acreage extends well beyond the fenced area.
AJ Millon
253-857-3304 #29 086565



LONGBRANCH \$525,000
Your getaway beach house by the Sound. 50 feet of no bank wft, 180° view of Pitt & Drayton Passage plus Mt Rainier. Wonderful 3 bedroom, 1.75 bath, 1528 sq ft home with BBQ deck just outside dining room sliders. Rec room with bath or ADU over detached garage.
Laura Mosley
253-857-3304 #29 086549



GIG HARBOR \$164,950
This is a great opportunity to own a home in a gated community of Lake Holikay with private beach access. This home features a nicely landscaped yard including a Koi pond in the front & fire pit in the back. Laminate floors in the kitchen, living & dining rooms.
Liz Gefre
253-857-3304 #28 165426



TIMBERLAKE \$13,500
Opportunity knocks for you to own your own land in the Timberlake community where you can use the dog park, play in the playgrounds, try your hand at horse shoes or do some boating or swimming.
Cinda Baldwin
253-857-3304 #29 084525



ALDERBROOK \$20,500
Get out the golf clubs & get your tee time! This is your opportunity to live in the Alderbrook Golf & Yacht Club community. Beautiful vacant lot ready for you to build your dream home & start living the life you've been dreaming of.
Cinda Baldwin
253-857-3304 #29 080296



ALDERBROOK \$20,500
This is your opportunity to live in the Alderbrook Golf & Yacht Club community. Go ahead & take a look but be sure to check out the club house, tennis courts & the wonderful golf course! What a great price for land.
Cinda Baldwin
253-857-3304 #29 080296



LAKE LIMERICK \$49,000
2 lots for this unbelievable price! What a great opportunity to build your dream home right across from the golf course in Lake Limerick C.C. Play at the lake, golf, play tennis, shop at the pro shop or eat at one of the restaurants.
Cinda Baldwin
253-857-3304 #29 091048



KEY PENINSULA \$55,000
Potential! This 5 level acre parcel is partially cleared & just far enough away. Close to Bremerton, Tacoma & all State Parks. This parcel has outbuildings. Combine this lot with the 2 adjoining lots & you could have over 7 acres!
Dallas Amick & Janette Weister
253-857-3304 #29 094051



Dallas Amick
253-605-0772



Cinda Baldwin
253-854-1754



Liz Gefre
253-241-1797



Susan Hoover
800-929-3117



Dottie Mazza
253-225-0530



A.J. Millon
253-884-9537



Laura Mosley
253-377-9025



Janette Weister
253-255-0726



Suz Davis
253-379-6270



Kathleen Rivers
253-225-3046



Mike Rhodes
253-223-0720



Windermere Real Estate-Key Realty

11615 SR 302 NW

Gig Harbor

253-857-3304

windermerekeypen.com



KP man backbone to U.S. Navy's current weapons system

By Sharon Hicks, KP News

Dr. Ivar Highberg of Home died peacefully in his home June 4 at the age of 97. After moving here 34 years ago he was quoted as saying "this is God's country." During those years one could find Ivar in his garden, fishing or just on the beach where he loved to dig clams. Born in Spokane, he graduated from Whitman College in 1932 with degrees in mathematics and physics, then from the California Institute of Technology with a PHD four years later. In both schools the doctor graduated magna cum laude.



HIGHBERG

During his freshman year Ivar lived with Dr. Stephen Penrose, President of Whitman and his family. Becoming close friends he was hired by Penrose to join the family as a helper and reader during his later years. The summer of 1928, his first year with them, he was again hired by Penrose to move his belongings, loaded on barges and taken to the point early and stored with neighbors until Penrose arrived later to spend the summers. After Penrose's death the Highberg family continued to spend the summers on the point.

After more than 10 years of teaching math and being head of the physics department, Highberg was recruited for work at China Lake in 1947 where he spent the next 28 years becoming the backbone to the Navy's current weapons

system. Working for the Research Department he became head of the departments Ballistics Division then head of the former Test Department. Among the many developments for which Highberg was responsible was the building of the Aerodynamics Field laboratory. At one time he was awarded the L.Y.E. Thompson Award for development efforts in surface-launched weapons systems and two years before retiring he was chosen to serve as the Deputy TD for Air Combat Systems.

Ivar and Mary Bower were married by Penrose in Spokane in 1937. They honeymooned on the Key Peninsula at Point Penrose and it was then Mary said, "This is where I want to live" and they continued to return for vacations though it would be many years later before her

dream came true. Their living quarters consisted of a lean-to shelter set on tent platforms.

In the early 60s the land he so loved was sold to the state and became Penrose Point State Park. His family continued to spend summers on Delano Bay until it was closed in 1951. When Highberg retired in 1975 he and Mary wanted to move to the peninsula; his criteria for moving were to see Mt. Rainier and Penrose Point, thus Mary's dream nearly 30 years before came true.

The Highberg's daughter, Cathy Williams, said her father led three lives. He was a professor, a civil service employee, and a retiree. A celebration of Ivar Highberg's life was held July 19, the day after what would have been his 98th birthday.

OBITUARIES

Joyce (Glasson) Morse

Joyce (Glasson) Morse was born Dec. 12, 1929 and died June 27, 2009. Joyce was born in Kellogg, Idaho to Iva and Charles Glasson. She was raised in

Longbranch and attended Vaughn Union High School. After she married, she spent most of her years in Santa Ana, California. Joyce leaves behind her sister, Hazel Kingsbury of Vaughn, and two daughters, Debbie and Connie,



MORSE

four grandsons: Rickie, Robert, Bryan and Chad, and ten great-grandchildren: Rickie, Teresa, Marie, Vickolas, Nicole, Joshua, Seth, Zackery, Skyler, and Cade. She was well loved by all. We will truly miss her. May she rest in peace, our special angel.

Robert (Bob) Lind Memorial

There will be a memorial for Bob

Lind, who died last September, at the Lind Home Aug. 8 from 4 to 6 p.m. It will be a casual affair, combined with the annual family weekend.

Directions: Take Highway 16 across the Narrows Bridge to Purdy Exit, left onto SR 302, continue 8 miles to Key Center, continue another 5 miles to town of Home, turn right on 8th Ave. KPN, 1/3 mile to end of road.



PENINSULA
DERMATOLOGY
and laser clinic

Christopher Fors
Licensed Aesthetician

GIG HARBOR
p: 253.884.7733
f: 253.884.8060
4700 Pt. Fosdick Dr. NW
Suite 219
Gig Harbor, WA 98335

SILVER DALE
p: 360.898.8859
www.peninsuladerm.com

Dirt Work by



253.884-4649

Nimrick's Bulldozing *Fire Up The Diesel!*



Small & Large jobs
Land Clearing
Site Prep
Rock Walls
Roads
Demolition
Gravel

Call for Free Estimate

15406 92nd St. KPN
Gig Harbor, WA 98329

Jerry 253 606 3085
Randy 253 606 3088

Advertise your business card.

Call
884-4699.

North Bay Land Development LLC

"We have the experience & the equipment to get the job done!"



We do...

Land Clearing, Dump Trucking, Demolitions,
Gravel & Fill Dirt, Underground Utilities,
Roadwork, Mudslide Repair, Drainage

We build

Retaining Walls, Septic Systems, Sewer &
Water Mains, Erosion Control, Land Home Packages


AS1
Environmentally
Conscientious
Contractor

Proudly Serving
Pierce, Mason & Kitsap Counties

360 253 857 6574

360 253 710 1292

donnblid@comcast.net



WayPoint Church
Pointing the way to Jesus
Sundays 10AM
Vaughn Elementary School 884-2269
Listen to SERMONS ONLINE!
www.waypoint-church.org



ONE EARTH Enterprises, Inc
Consult • **REMODEL** • Design
253-857-7259
IRA SPECTOR • Lic# ONEEAE927CJ

Pool Time Cue Repair
TIPS...FERRULES
RETAPER SHAFTS
CLEAN & WAX
(253) 255-2726
(253) 884-2026
FAX (253) 884-1421
Jim DuBois Lakebay, WA
duboiscue@yahoo.com



Historic Vaughn Bay Church
A Community Worship
Worship Service 10:30 am
884-5403
VFW Room
Key Peninsula Civic Center

We NEED a guitar teacher!


10 year old student with two years of lessons is needing a new teacher.
Plays both acoustic and electric. Likes to have fun.
Past experience as a teacher not necessary.
Please call 253-278-1838

BULLDOZING BACK-HOE LOGGING GRAVEL AND FILL DIRT MINI-EXCAVATOR SITE PREP
JOHNSON BULLDOZING CO.
LAKEWAY, WASHINGTON 98349
PHONE (253) 884-2262
DAVE JOHNSON (253) 884-2220
PHIL JOHNSON (253) 884-2267




Peninsula Home Improvement, LLC
Remodel • Maintenance • Landscape Structures • Debris Removal And More
Call: 206-383-6875 253-884-6941

WARFIELD MASONRY, LLC
COMMERCIAL • RESIDENTIAL • CUSTOM
PO Box 884
Vaughn, WA 98394
(253) 606-2234
WALF MASONRY



TeddyBull's Cat Boarding
Suzy Meyer
Lic. Vet. Tech.
Call for Details
253-884-5636




Gentilly Home Services
Home • Office • Out. Buildings • Repairs
Replacement • Alterations • Decks • Fixtures
Replacement • Windows • Doors • Minor
Plumbing • Water Damage
• Lights • Cabinets • and more
Phone: (253) 884-2491
Cell: (253) 376-6227

BROOKSIDE VETERINARY HOSPITAL
Tender Loving Care For All Your Family Pets!
Lisa M. Woods, DVM
Prudence Jurica, DVM
13701 118th Ave. NW
Gig Harbor, WA 98329
253.857.7302
253.857.7654 Fax



LAKEBAY COMMUNITY CHURCH
Welcoming New Families
Sunday Worship - 10:30 a.m.
Sunday School - 9:00 a.m.
Youth Ministry - Pioneer Clubs
www.lakebaycovenant.net
11 Commercial Rd. KPS 253 884-3899



Equine, Livestock & Residential Fencing—Since 1989
Warick & Janice Bryant
Kivi Fencing Company, Inc.
Custom Farm & Fence Solutions
13101-15th Ct. KPN 800 598 3574
Gig Harbor, WA 98329 253-857-5494
www.kivifencing.com fax 253 857 5530
#NW FOC55DA cindy@kivifencing.com



natureschildmontessori.com
(253) 884-6313
Nature's Child Montessori



KEY CENTER AUTO REPAIR
YOUR FULL SERVICE AUTO REPAIR
TUNE-UPS • SCHEDULED SERVICES • WARRANTIES
COMPUTER DIAGNOSTICS • AIR CONDITIONING
BRAKES • EXHAUST • TRANSMISSIONS
FUEL SYSTEMS • ENGINES • WHEEL BALANCING
ASE CERTIFIED TECHNICIANS
13712 KPN GIG HARBOR.....253-858-5227
Next to Key Center Shell

PENINSULA MARKET
Your Local Full Service Supermarket
Summer Hours 8 am-10 pm
Just In!! Fresh Local Grown Pacific Produce
Sweet Corn, Cucumbers, Green Beans,
Iceberg Lettuce & Leaf Lettuce,
Zucchini & Farm Ripe Berries
Lakebay 253-884-3325 Lake Kathryn 253-857-5362
www.peninsulamarkets.net

JC Charboneau Construction and Supply
Landscape Rock • Crushed Gravel • River Rock
Pit Sand • Beauty Bark • Topsoil
Stepping Stones • Wall Block • Pavers • Brick
Driveway Culvert • Drain Pipe & Fittings
Catch Basins • Septic Risers
All Products Available for Pick-Up or Delivery
253-857-5125
11612 SR 302 NW, Gig Harbor, WA

Tractor Works
Brush-hog/field cutting
Garden Tilling
Fence Post Auger
Dan Miller
danmiller33x@centurytel.net 253-884-3302



Place your business card in this advertising directory.
Call 253-884-4699 or email ads@keypennews.com.

Out & About

To see more Out & About photos, visit our Website at www.keypennews.com and follow the Photo Gallery link. See more of your neighbors out and about, Key Peninsula scenes and happenings. The online gallery features only Website exclusive photos!



Photo by Hugh McMillan, KP News

Donna White of Morgan Creek Farm in Vaughn waits for customers on a beautiful day at the Key Peninsula Farmer's Market. The booth sells a wide variety of flowers and plants. See more photos online at www.keypennews.com.



At the 20th annual Key Peninsula Lions Club-sponsored Volksmarch July 18, this group chanced upon one another at the halfway point check-in site. They heralded from West Seattle, Federal Way, Olympia, Kent, Buckley, Ballard, and Auburn. When asked for their names, one called out, "Just call us a cluster!" Volksmarch, is a non-competitive walk. Walkers choose their time to start within the start/finish window, and participate at their own pace. *Photo by Hugh McMillan, KP News*



Photo by September Hyde/KP News

Pastor Tim Stobbe promised the kids at the WayPoint Church Vacation Bible School he would walk the "Gauntlet of Slime" if they gathered 60 kids to attend this summer's camp at the Key Peninsula Civic Center July 20-24. The kids were successful and the pastor was bombarded with seaweed and green Jell-o, all in good fun.



Fireworks explode over Henderson Bay July 4.

Photo by Mindi LaRose