

Key Peninsula NEWS

Non-profit Org.
U.S. Postage Paid
Permit No. 2
Vaughn, WA 98394

Box Holder

Volume 17 Issue 18
Circulation 6000

September 18
1989

Working together for the social and economic good of our Key Peninsula



The flavor of fall comes to the Key Peninsula
KP NEWS photo by Joe Aprile

\$1000 Hydroplane donated to Auction

A Class A stock hydro has been donated by John Carlson of Lakebay Woodworks to benefit the KPCCA dinner auction. The boat is a 3 point hydroplane, designed and built specifically for racing in outboard class A. It measures 9'5" overall length, 5' wide at the sponsons and weighs 76 pounds.

The hydro will be available for viewing at Sunnycrest Nursery after September 15. Sealed bids may be made at Sunnycrest Nursery. The boat has been valued at \$1000.

Mark September 30!

Mark it on your calendar! That's the date for the second annual KPCCA "Taste of Fall" dinner/auction. Last year people said it couldn't be done. An elegant sit-down dinner at the Civic Center??? Our Civic Center is famous for \$5 "all you can eat" spaghetti dinners! Who's going to pay \$17.50 to eat at the Civic Center?

Last year 123 daring individuals took the plunge. They were wined and dined with an excellent five-course meal in an atmosphere comparable to a fine restaurant. A silent auction was held before and during dinner. The oral auction followed. \$4100 was raised to help pave the Civic Center parking lot.

This year's dinner/auction promises to be even better. A no-host cocktail hour, sponsored by the ladies from the Dr. Penrose Orthopedic Guild, will start at 5:30 pm. Appetizers will be served and the Hoodspout winery will be there with a tasting of their award-winning wines.

Pierre Gabrelli from Longbranch will prepare the dinner which will feature: fresh King salmon with lobster sauce, sauteed vegetables/Hollandaise, fall salad and rolls, plus a delicious dessert buffet. Teriyaki chicken will be the alternative main entree.

Dinner will be served at 7 pm.

Judi Cleghorn of North Herron Interiors will transform our plain Jane Civic Center into Cinderella's palace. Stokes Auction Service will be on hand to conduct the auction which will start at 8 sharp.

For tickets call Claudia Loy at 884-3937.

Public planning hearing attracts large turn-out

by Megan Aprile

The recent public hearing held by the Pierce County Planning Commission at the Key Peninsula Civic Center attracted over 250 people. Two petitions had been submitted to the Pierce County Council, one to establish a one-acre minimum lot size in the Home area, and one to rezone the Key Peninsula, except for the areas covered by the Home area petition and the Gig Harbor Comprehensive Plan.

The planning commission staff had determined there were 246 properties in the Home area, with 107 local owners and 139 out of area owners. Of the local owners, 70% favored the re-zone. Of the out of area owners, 42% were in favor. acre lot size, or an SR-20 designation of 20,000 square feet instead of the general zoning that is now in force. After

determining that the petition committee could circulate summaries of the SA-1 and SR-20 designations in the community, the planners continued the hearing. A summary of those designations will be mailed to each signer of the petition. There will also be a copy at the NEWS office. That hearing will also be held at the Civic Center on Monday, November 6 at 7:30 pm.

The area-wide interim rezone of the Key Peninsula was the subject of some heated complaints from people who would be adversely affected by zoning changes. The main provisions of that petition called for a 2.5 acre minimum lot size, excluding current commercial and waterfront, and a 50 foot buffer zone **planning** continued on page 8

Vote

The September 19 election is very important. Make sure your voice is heard. For information on the issues and candidates, see the last issue of the NEWS. Official voting places are: Peninsula High School, Minter Elementary, Vaughn Elementary, the Key Center branch of the Pierce County Libraries, the Home Fire station, Evergreen Elementary, and the Longbranch Improvement Clubhouse. Polls are open from 7 am to 8 pm. Votes are counted at each location, and the tally is posted in a window when counting is complete.

If your voter registration is not current, you will not be able to vote. To update your registration so that you can vote in coming elections, you may call the Pierce county election line at 591-7430 for information.

Key Peninsula NEWS

PO Box 3, Vaughn, WA 98394

884-4699

Published twice monthly by
Key Peninsula Civic Center Assn.

Mng. Editor: Megan Aprile
Ad Sales: Keith Stiles (temp)
Ad Lay-out: Lee Stiles (temp)
Reporter: Megan Aprile
Photographer: Joe Aprile
Bookkeeper: Ruth Updike
Distribution: Arleen Lonning

Staff Support Volunteers:
Joanne Baldwin, Sally
Comman, Marian Wagner, Linnea
Lawson.
With special help from Lee Stiles
and Pauline Finn.

Contributors:
Hugh McMillan, Keith Stiles,
Daphne Daus, Dory Meyers, Paul
Cyr, Dr. Wm. Roes, Stella Rether-
ford, Elaine Forch, Janice McMillan,
Cecil Paul, R. Marvin Keizur,

The opinions expressed are the
opinions of the writers and do not nec-
essarily reflect the views of the pub-
lishers or the staff.

A twice-monthly non-profit news-
paper, distributed free to all residents
in the Key Peninsula area, supported
by local merchants' advertising and
staffed largely by volunteers. All
proceeds go toward the programs of
the Civic Center.

KP NEWS Deadline

The next issue of KP NEWS will
come out on October 9. Please note the
deadline for notices, articles and ads
for that issue is Monday, October 2.

Pierce County Sheriff

Deputy Curt Benson has been
selected to fill a newly created position
as public information officer (PIO) for
the Pierce County Sheriff's Department.
Deputy Benson's function as PIO is to
foster open communication and greater
understanding between the department
and the news media and citizenry. The
position was created by Sheriff Chuck
Robbins in response to the continuing
growth of unincorporated Pierce
County. Benson can be reached at the
following numbers: office (weekdays)
596-6609, car 381-3434, pager 596-
9336, home (evenings, weekends) 581-
7467.

To the Editor

Dear Editor:

Now that school has begun and hectic
summer schedules have slowed down I
have had time to reflect on this past year's
4th of July event on the Peninsula.

I support the fire department 100%
but I can no longer support the Fireworks
Show in Home. I live in Home and am
unhappy with the noise, commotion,
crowds and unruly behavior. I want the
right to celebrate the 4th quietly in my
home next year. Thank you.
Maryjane Robbins, Home

To the Editor:

I would like to take this
opportunity to voice my feelings as
well as my opinion regarding a very
important decision we will be
participating in during this week. It is
my hope that what I have to say will
not come too late for consideration by
its readers. We will be voting on
September 19 on several issues; one is
the EMS/fire levy. It will be a time to
decide what is most important: the
change in our pockets or the health and
welfare of our friends, neighbors and
family.

I see a critical situation in our
future should the EMS/fire levy fail to
pass with a "yes" vote. This
observation comes not only from the
standpoint as a concerned member of the
Key Peninsula community, but as a
volunteer firefighter and EMT with fire
district 16. I have responded to several
medical emergencies on the peninsula
during my three years with this
department. As EMT's, we are trained
for the basic support of life in these
emergencies, while waiting for advanced
care-givers to arrive. People trained to
provide that type of care are paramedics.

In all honesty, there are those
people who will not survive no matter
what amount of care they receive. On
the other hand, there are those who will
survive if they are provided with the
immediate attention and advanced care
administered by a paramedic prior to
their arrival at the hospital.

In the past, our firefighter/EMT's
supported the patient with BLS care for
critical injuries or illness until the
paramedics arrived at the scene or met
the ambulance somewhere. There,
further stress to the patient(s) occurred
when the patient had to be moved to the
private ambulance service vehicle before
continuing to the hospital emergency
room. The time frame between our
arrival to the scene until a paramedic
joined us would range from 20 to 40
minutes. The Home and Longbranch
areas were affected the most. "Time" is
an important factor to the survival of
some patients. So consider the present
condition, where we have a paramedic
responding with the fire department in
an average time of nine minutes. Also
the patient is transported in our
ambulance directly to the hospital.

We all face periods of making ends
meet. Yet, if someone's chances of
survival increase by having a paramedic
respond as a member of fire district 16,
I will find a way to support that
endeavor to ensure a positive outcome.
I feel that the combination we have had
in recent months with our EMT(s)
providing basic life support and
paramedics providing advanced life
support has made a positive impact,
upgraded the quality of care in our
community and has preserved life. It is
for this reason that I will vote in favor
of the EMS/fire levy.

Lyndie Long
Key Peninsula resident, volunteer
firefighter/EMT

To the Editor:

On behalf of the Board of
Commissioners of the Key Peninsula
Park and Recreation District I would
like to extend my deepest appreciation
to all the local businesses and parents
who made Summer Fun '89 a huge
success.

The generous donations enabled us
to provide the children with a variety of
games, crafts and snacks. Our program
coordinators, Kevin Larew and Heidi
Adams, also played a major role in the
success of Summer Fun '89.

A special thank you to the Angel
Guild, Key Peninsula Civic Center
Association and Fire District 16 for
their generosity and their ongoing
commitment to the youth of the Key
Peninsula.
Daphne Daus
Chairman, Key Peninsula Park District

To the Editor:

The Key Peninsula owes a very
special thank you to Sue Leavitt and her
young people and staff for the time,
love and efforts put forth on the "Wizard
of Oz." This was the Civic Center
Association's first venture into
underwriting a theatre production, and
Sue's dedication brought the show
through in grand style.

A very special thank you, Sue,
from all of us on the Key Peninsula
Civic Center Board.

To the Editor:

The Wizard of Oz was wonderful!
This is what community theater can be.
Even more is possible! We as a commu-
nity have untapped talents.

To create the possibility for more
performances, we need to form a Theater/
Arts group. The purpose of this group
would be to provide for the physical and
financial details surrounding an event.
Artists/musicians/performers could ap-
proach this group with a proposal. If the
group chooses to work with the artists on
the project, further details are then
worked out. The artists should be paid,
perhaps a percentage of the profits.

Anyone interested in being part of
such a Theater/Arts group please put your
name, address, phone number and any
message on a 3x5 card and mail it to:
Theater/Arts, c/o The Chase Place, 17709
Hall Road KPN, Vaughn, WA, 98394.
Rivkah Sweedler, Home

September KPCCA meeting report

The Wizard of Oz was a success,
and ticket sales more than paid for the
cost of the production. The Association
voted to create a permanent theatre guild
and continue to stage productions, an
exciting development for our
community. Oz director Sue Leavitt
will chair that group. The Association
also voted to restore the stage to its
original construction so it can be better
utilized for play production. A work
party was scheduled for October 7 at 8
am.

In other program issues,
Association treasurer Ann Larson
presented her idea for a board game night
for families. Members felt it would be
a nice event to try, and Board Game
Night was scheduled for January 19.

New skating managers and helpers
have been hired, and skating will be held
next on September 22.

The Halloween dance will be
October 28. The Association voted to
donate up to \$500 for the Halloween
party. This year the event will be held
at the center and run by the LDS church.

The Association members also
discussed purchasing big toy-type
playground equipment for the Civic
Center grounds, and how fund raising
could be structured.

Reports were also heard from the
Park board, the KPCCA treasurer, the
Pioneer Days committee, the Flavor of
Fall committee and the Bingo chairman.

Halloween party

Those people wishing to help with
the Halloween party may call Dixie
Lodholm 857-5368. People are
particularly needed to organize and help
set up the event.

Mushroom Show

The Kitsap Peninsula Mycological
Society is an organization to promote the
enjoyment of "mushrooming," a family
hobby to enhancing the enjoyment of our
great Northwest. The nineteenth annual
show will be held Sunday, October 1 from
1 - 7 pm at the Westside Improvement
Club in Bremerton.

Mushrooms from the local area will
be displayed for study identification and
discussion, including a "touch and feel"
of common local mushrooms, and dis-
plays on mushroom preservation. There
will be a twenty minute video showing
spring through fall mushrooms, their
habitat and gathering methods. A table
will also be set up for guests to bring in
any mushrooms they may wish to have
identified or explained.

Donations accepted at the door. For
more information call Ann Knight, 373-
1826 or Lois Beckert, 377-8267.

Flavor of Fall

KP Civic Center Dinner/Auction - September 30

DONATIONS:

- | | |
|---|---------------------------------------|
| 1. Six hours design & drafting for deck or room addition to your home | Snodgrass, Freeman Assoc. Architects |
| 2. Answering machine | Puget Sound National Bank |
| 3. Christmas letter with 100 copies | Words Galore |
| 4. Garden croquet party for 6-8 people | Sunnycrest Nursery |
| 5. 10% discount on any wedding or anniversary pack \$250 or over | Photography by Rennie |
| 6. Box of homemade pickles & jams | Mike & Joyce Salatino |
| 7. Exam & cleaning | Dr. Olsson, DDS |
| 8. Set of 8 Italian wine glasses | Daphne & Jim Daus |
| 9. Lunch at the 1990 Legislature | Wes Pruitt, 26th Dist. Rep. |
| 10. 2 tickets for Seahawk-Raiders game | Mary Ann & Bill Huntington |
| 11. Two push toys | Kingsbury Enterprises |
| 12. Antique washstand replicas | Angel Guild |
| 13. \$100 gift certificate | US Sheet Metal & Blower, Inc. |
| 14. 10-yard load 4-way topsoil | Purdy Topsoil |
| 15. Case of bar oil | Lonning Saw |
| 16. Painting | Log House Studio |
| 17. Sack of horse feed | K-J Feed |
| 19. Wreath | Country Mouse |
| 20. Phone | Telephone Utilities |
| 21. 12" Pizza with 5 toppings | Great American Pizza |
| 22. \$12 gift certificate | Sylvia's Styling & Tanning Salon |
| 23. Conair lighted make-up mirror | CostLess Pharmacy |
| 24. One-year membership | Movie Magic |
| 25. Unspecified | DJ's Mini Mart & DJ's Tire Service |
| 26. One lunch special with beverage | Spinner's Hearth & Country Store |
| 28. 2-hour interior design consultation | Judi Cleghorn, North Herron Interiors |
| 28. One load Kitsap Quarry dec: rock | Active Construction |
| 29. \$50 wedding or Anniversary cake or \$50 off larger cake | Karoline |
| 30. 9-ft. A-stock hydroplane shell ready to be customized | Lakebay Woodworks |
| 31. Nineteen-record set of Ring of Neibelung by Wagner w/librettos | Anonymous |
| 32. Japanese or American car tune-up (up to \$90 value) | N.W. Auto Clinic |
| 33. \$100 gift certificate for computer hardware, software or service | Peninsula Computer |
| 34. Unspecified | Burley Galleria |
| 35. Pottery vase | Rene Moriarity |
| 36. 1 day's labor fix-up or construction | XL Homecrafters |
| 37. 10 yards crushed rock | Bo-Mac |
| 38. \$25 new membership or \$25 added to old mbrship. | Tacoma Telco |
| 39. Unspecified | Crow's Nest Antiques |
| 40. Lube, oil & filter | Chet's Lakebay Chevron |
| 41. 10 speed 20" bike | Mike & Janet Palumbo |
| 42. 2 nights at Pt. Brown Resort in luxury condo | Hugh & Janice McMillan |
| 43. Tour of Lakewold Gardens (Lakewood) for 6 | Fantasia Flowers |
| 44. 2 lbs. bacon | Macon Bacon |
| 45. 1 month lessons for two adults | World of Dance |
| 46. \$25 gift certificate | Key Center Trading Post |
| 47. West Bend coffee maker | Key Western Building |
| 48. \$35 installation certificate | Cascade Cablevision |
| 49. 4 tickets for Performance Circle, 2 adults, 2 children | Colony Real Estate |
| 50. Sunday brunch for 4 | The Key |
| 51. Unspecified | Beverly Peterson |
| 52. 6 free haircuts | Marty's Clip Joint |
| 53. 8' oak upper divider cabinet with etched glass doors | Bob & Ann Larson |
| 54. Unspecified | Morford's Hallmark |
| 55. Unspecified | Topside Tees |
| 56. Lube, oil & filter | Key Center Shell |
| 57. 2 dinner specials | Huckleberry Inn |
| 58. 4 free admissions to dance of your choice | Twilight Dance Club |

Peninsula movings and shakings.....

Monday, September 18 ...

Ruth Circle meets at Longbranch Church Hall for noon lunch and meeting.
Al-Anon meets at Longbranch Improvement Club from 7-8 pm.

Tuesday, September 19 ...

Cootiettes 609 visit Retsil Veterans Home. Meet at Key Center to carpool.
Bear Den #4 meets at Civic Center 3:30-5 pm.
Boy Scouts meet at Civic Center 7:15 - 8:30 pm.

Wednesday, September 20 ...

Vaughn Garden Club meets at Lake Holiday Clubhouse at 1:30 pm.
Community Center at Home will serve hot lunch to seniors at noon.
Lions Club meets at Huckleberry Inn at 7 pm.
Longbranch Improvement Club potluck 7 pm.
Caregivers Group meets 6:30-9:30 pm in the Brones Room of the KC Library
Respite Care meets in the Brones Room of KC Library 9 am to 3 pm.

Thursday, September 21 ...

KP Senior Society 10th Anniversary dinner at noon in the Whitmore Room of the Civic Center.
Webelos meet at Civic Center 7-8:30 pm.
Cootiettes 609 hold their regular meeting at the Civic Center at 7 pm.

Friday, September 22 ...

Family Recreation Night at Longbranch Improvement Club, 6-10 pm.
Skating starts again at the Civic Center. Call 884-3456 for times.

Monday, September 25 ...

Angel Guild meets in the Brones Room at KC Library at 10 am.
Al-Anon meets at Longbranch Improvement Club from 7-8 pm.
Paul Cyr Community Forum - KPCC's Whitmore Room at 7 pm.

Tuesday, September 26 ...

Nutrition Day - 12 noon lunch for seniors at Longbranch Church Hall.
Bear Den #4 meets in the Scout Room of the Civic Center at 3:30-5 pm.
Boy Scouts meet at the Civic Center at 7:15-8:30 pm.
Cootiettes 609 visit the Naval Hospital at Bremerton. Meet at KC to carpool.
Altrusa Club meets at the Shoreline Restaurant for dinner at 6 pm.

Wednesday, September 27 ...

Respite Care meets in the Brones Room 9 am - 4 pm.
Community Center at Home will serve hot lunch to seniors at noon.
Friends of the Library will meet in the Brones Room at 7 pm.

Thursday, September 28 ...

KP Senior Society potluck lunch in the Whitmore Room of Civic Center at noon.
Survivors Group meets in the Brones Room of the KC Library 2 pm-3:30 pm.
Cub Scout Pack meeting, KPCC, at 7-8 pm.
KP Health Center Board meets at 7:30 pm in the Brones Room of the KC Library.
AARP driving classes for seniors at Longbranch Improvement Club 9 am - 1 pm.

Friday, September 29 ...

AARP driving classes for senior at Longbranch Improvement Club 9 am - 1 pm.

Saturday, September 30 ...

Evergreen Elementary Eagle Fun Run 8 am check-in
Flavor of Fall Dinner/Auction - KP Civic Center

Monday, October 2 ...

Sr. Society Board meeting - KPCC 10 am
Al-Anon meets at Longbranch Improvement Club 7-8 pm
Upper Sound Grange 705 meets at 7 pm, Civic Center

Tuesday, October 3 ...

Evergreen Elementary Open House 7 pm
Bear Den #4 meets 3:30 - 5 pm, Civic Center
Peninsula Social Club potluck 6:30 pm, Longbranch Church Hall

Wednesday, October 4 ...

Respite Care meets in Brones Room of KC Library 9 am - 3 pm
Community Center at Home has hot lunch for seniors at noon.
Lions Club meets at Huckleberry Inn at 7 pm.
Pierce County Land Use hearing 7 pm, KPCC.

Thursday, October 5 ...

KP Senior Society potluck lunch - noon at the Civic Center
Webelos meets at 7 pm - 8:30 pm, KP Civic Center
Citizens Against Crime meet in the Whitmore Room of the Civic Center

Friday, October 6 ...

KPBA - Huckleberry Inn 7:30 am
Family Recreation Night at Longbranch Improvement Club, 6 pm to 10 pm

Saturday, October 7 ...

Work party at KP Civic Center (gymnasium stage fix-up) 8 am

Monday, October 9 ...

Al-Anon meets at Longbranch Improvement Club 7 to 8 pm
VFW and Auxiliary meet at 7:30 pm in the VFW Room of KP Civic Center

Dates to mark on your calendar:

Halloween Dance at the Civic Center - October 28

KP Senior Society's Anniversary dinner

Celebrate with the Key Peninsula Senior Society as they note the Tenth Anniversary of the group's founding. Dinner will be served at 12 o'clock noon on September 21 at the Civic Center in Vaughn.

Anyone wishing to attend is asked to call as soon as possible to reserve a FREE ticket, which may be picked up at the door. Telephone numbers to call are: 884-2067, 884-2720, and 884-3726. Those attending are asked to bring either a salad or a dessert. Please call and help us plan for your enjoyment.

Past presidents will be honored as well as special guests. A program will include a brief history of the Society, a selection of songs by Rachel Jorgenson and at 1:30 pm, a barbershop quartet, "The Harbor Buoys." from Gig Harbor.

"SOS" brunch at KPCSF

by Hugh McMillan

The Key Peninsula Community Services and Foodbank (KPCSF) will hold another of its delicious "SOS" fund-raiser brunches from 8:00 am - 1:00 pm on Sunday, October 1, at Community House, Key Peninsula Highway and Hoff Road. Karla Crocker, who will again oversee the success of this popular event, advises that the "more than you can eat" meal will consist of creamed beef on biscuits, hashbrowns topped with an egg, juice and coffee for \$2.50 for adults and \$1.25 for those under twelve.

Everyone is invited to enjoy this fine meal and chance to meet your friends and neighbors.

Great Pretenders play Halloween Dance

The Great Pretenders, Puget Sound's finest 50's and 60's dance band will be playing at the Key Peninsula Civic Center, Sat. October 28. The dance will have a Halloween theme and costumes and contests will be a part of the evening.

Tickets will be available by mid-September at Sunnycrest Nursery in Key Center and are \$10 per person. The dance is for all residents of Fire District 16, 21 years and older, and their invited guests. As usual, BYOB, we'll supply free ice and coffee.

PHS varsity victory

The Peninsula Seahawk took their record to 2-0 by defeating the Mark Morris Monarchs 22 to 16 at Longview on September 15.

Longbranch Community Church dedication

Longbranch Community Church celebrated the dedication of the renovated sanctuary Sunday, September 17, from 1 to 3 pm. This is the first project of the three year renovation program to be finished.

Senior driving

The American Association of Retired Persons will be conducting a two day driving class at the Longbranch Improvement Club, September 28 and 29, from 9 am to 1 pm. Registration for the class closes on September 28 at 8:30 am. Class fee is \$7.00.

Vaughn Garden Club meets

Members of the Vaughn Garden Club will meet September 20 at Lake Holiday Club House at 1:30 pm. The program will be presented by master gardener Rae Ann Nelson from Puyallup who will give a flower arrangement demonstration. Members are asked to bring a special vase and flowers.

Hunt and Fish news

The 1989 legislature has increased vessel inspection fees, and exempted certain vessels from the state's boating registration law. Both provisions were effective July 23.

For vehicles previously registered out of state, the fee will increase from \$10 to \$15. A fee of \$20 will be charged for all other vehicles requiring inspection, such as homemade, assembled or insurance destroyed.

A vessel is exempt from registration requirements if it is: registered or numbered under the laws of another country, has a valid U.S. Customs Service cruising license, or is owned by a resident of another state, and located in state waters exclusively for repair.

Sportsfishing hotline

For the latest information of seasonal fishing area changes or other fishing information, call the Department of Fisheries Sportfishing Hotline at 1-976-3200. Calls are 50 cents.

Hunt in safety

All hunters under the age of 18 must take a hunter safety course before purchasing their license.

Flavor of Fall Dinner and Auction

Fall Salad and Rolls
Fresh King Salmon with Lobster Sauce
Sautéed Vegetables - Hollandaise
New Potatoes
Dessert Buffet
Terriyaki Chicken - alternate entree

\$35.00 per couple
(\$17.50 per person)

SATURDAY, SEPT. 30

5:30 - NO HOST BAR
Hors d'oeuvres
Wine Tasting - Hoodspout Winery
7:00 - DINNER
8:00 - AUCTION

Those not attending dinner are welcome to join the Auction at 8:00 pm

For Reservations, Tickets or more info contact Claudia Loy, Sunnycrest Nursery, 884-3937 or Chris Holts, 857-5513

Proceeds are earmarked for the new heating system.

In the clutch go with experience.



When it comes down to the big play, you go with the pro who's been there before. Sure hands, quick reflexes and a knowledge of the game.

It's the same when you pick a financial institution. Puget Sound Bank has been making winning plays for generations. As the game has changed, so have we, with the latest services and features.

So when you're choosing your team, go with the pros that are picked to win. Year after year.

Puget Sound Bank

THE HOMETOWN BANK
Key Center Branch
9017 Key Peninsula Hiway
884-9345

Member F.D.I.C.

Computers come to Vaughn

by Keith Stiles

Dick Minarick, Director of Special Services for the Peninsula School District, has announced plans to install an instructional computer laboratory at Vaughn elementary school during the current school year. According to Mr. Minarick, the new installation will initially be a 12 station laboratory.

Details of the installation at Vaughn are being worked out at this time and it is hoped that the new equipment will be available to students soon. With the installation at Vaughn, all Key Peninsula schools, including KPMS, will have computer learning opportunities for students. Like other installations in the district, Mr. Minarick felt that the Vaughn facility would provide an opportunity for parent participation, which is needed to make the program a success.

Loved "OZ?"

There is a work party on October 7 to restore the stage at the Civic Center so plays can be put on more easily. The false ceiling above the stage needs to be removed. We can only take one weekend for the job, so the more people the better. Show your commitment to our own theatre guild. Bring your hammer. Work party starts at 8 am.

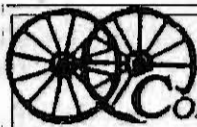
Evergreen VPO meets

The Evergreen Volunteer Parents' Organization met on Tuesday, September 12 to open the year's activity schedule. The group set September 30 as the date for the Eagle fun run and pancake breakfast, October 3 for Open House and October 31 for the Halloween carnival.

Following the short business meeting, including a presentation by "new" principal Larry Hawkins, the group heard a presentation called "What shall we tell the children," given by Ann Darling of Planned Parenthood in Tacoma.

Jeanne Sagle is serving as president of the organization this year, and other officers are Dee Roach, Betty Hicks, Janice Palumbo and Cheryl Giuntoli.

FOOTBALL OPENS



COLONY Real Estate, Inc.



MULTIPLE LISTING SERVICE

Waterfront - Acreage - Farms - Homes

Located in Key Center • K. C. Corral

PO Box 336, Vaughn, WA 98394

884 - 3304

Congratulations and Best of Luck

To Rain

from the gang at Huckleberry Inn

Betty	Pauline	Larry
Shirley	Ron	John
Ann	Frank	Lynn
Jackie	Cheryle	Margie
Deb	Ralph	Tom
Carmen	Dave	Fredda
Kem	Debbie	Loni

Community Needs

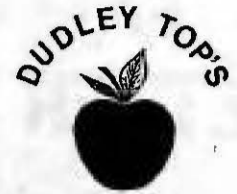
Caregiver training

Representatives from Catholic Community Services, Home-Helpers, Co-Care, Kimberly Quality Care and other agencies that hire caregivers to work in homes will hold a panel discussion on Wednesday, September 20 at 7 pm in the Brones Room of the Key Center Medical Center. Agency representatives will explain how to apply for work with their agency, pay scales, benefits and job skills required. All are welcome. For information call 884-9833.

More of our elderly and disabled community members are staying in their

own homes longer despite poor physical health or limited abilities. Caregivers, women and men, who help maintain a safe and healthy environment for them are greatly needed.

If caring for our elderly and disabled neighbors, part-time or full-time, doing such tasks as housework, laundry, meal preparation, personal care or friendly visiting interests you, your attendance at the next Care-Givers Support Group is vital.



Luscious Apples

Akane (Prime Red)	Jonathan King
Buckley Giant	Melrose
Chehalis	Mutsu
Criterion	Northern Spy
Gala	Oriole
Gravenstein	Spartan
Gravenstein (Red)	Summer Red
Hawaii	Viking
Holstein	Winter Banana
Jonagold	Yellow Transparent
Jonarnac	

Fresh apples - 40¢ a lb.
Dudley Top's Farm
884-9444

Purdy Beauty Shop

Perm Special

\$30.00

including haircut
long hair extra

Now Featuring
Acrylic Nails

857-3351

At the foot of Peninsula High School

If your home were wiped out, what would you do?

SAFECO's special home replacement plan covers the cost of replacing your home. It's our way of protecting you even if the cost of rebuilding exceeds the limits of your policy. For complete details, give us a call.

LAVONNE CARTWRIGHT
AGENT

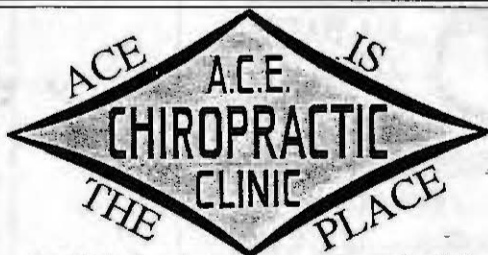
Bus: 473-1415

Res: 884-3369



If it's important to you, it's important to us.

SAFECO Insurance Companies - Seattle, WA 98185



"A.C.E. is the place for you and your family"

5110 LACKEY RD. KPN
VAUGHN, WA

Tues. - Thurs. - Sat.
884-2144

6720 REGENTS BLVD.

Suite 108
Tacoma, WA
Mon. - Wed. - Fri.
564-4414

THREE GOOD REASONS TO
COME TO OUR OFFICE:

SERVICE!

QUALITY!!

PRICE!!!

CALL AND FIND OUT WHY!

NO INSURANCE? NO PROBLEM! READ THIS

FAMILY PLAN

Patients who have no insurance of any kind for chiropractic care AND for patients who have exhausted their insurance coverage for the year:

One Family Member	\$55.00 per month
Two Family Members	\$65.00 per month
Three Family Members	\$75.00 per month

A you get better and your adjustments decrease, pay monthly rate or \$20.00 per visit, whichever is less.
This plan covers adjustments only. X-rays, exams or supports are additional.

Have Insurance?

MOST INSURANCE PLANS
ACCEPTED AS PAYMENT IN FULL!
If you have qualifying insurance, we will accept whatever your insurance covers as payment in full for your chiropractic treatment.

- L & I or WC - Accepted as payment in full.
- Personal Insurance - Most plans accepted as payment in full; call to see if your plan qualifies.

Have NO Insurance?

This valuable **HEALTH PASS** Allows you:

- FREE X-RAYS •
 - FREE EXAM •
- one set (two views) (\$90 value)
If medically necessary (\$60 value)

Total value \$150 - ABSOLUTELY FREE!

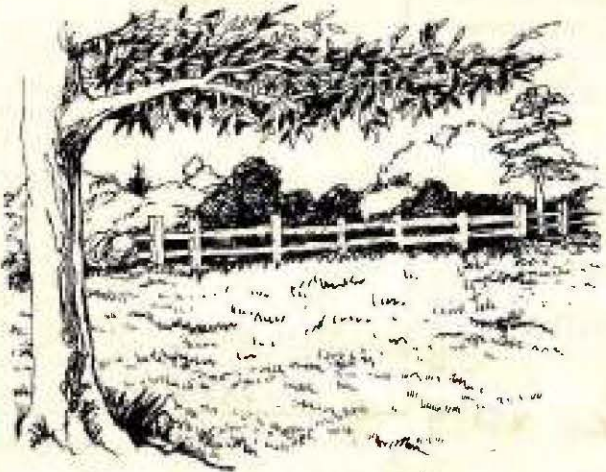
For New Patients on the First Visit Only

NO OBLIGATION

ANNIVERSARY AUTUMN

NOW YOU CAN GET YOUR YARD IN SHAPE AND SAVE WH

FALL LAWNS FOR BETTER LANDSCAPING



Roller and Spreader Available
For Use When Supplies
Are Purchased Here

Grass Seed

Playground All Purpose Mix

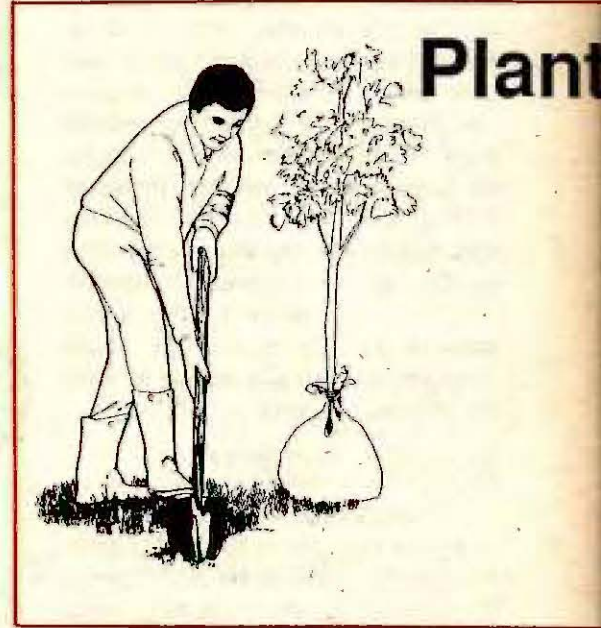
\$1.79 per #

25# - \$42.50 covers 3,000 sq. ft.

50# - \$79.50 covers 6,000 sq. ft.

ALSO AVAILABLE

- Custom Lawn Seed..... \$2.49 per #
- Shade Mix..... \$2.49 per #
- Winter Rye..... \$.29 per #
- Vetch..... \$.85 per #
- Clover..... \$2.49 per #



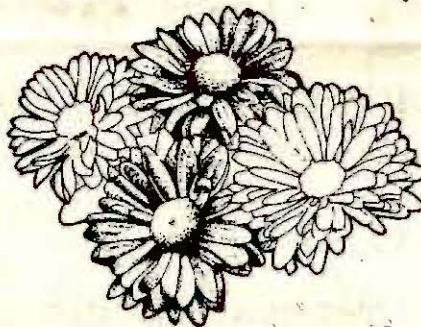
Plant

FALL COLOR

MUMS \$2.95 gal. - 4/\$10.95

WINTER PANSIES - 4"pts. \$1.29

KALE CABBAGE \$2.49 ea. - 3/\$6.95



Sp

...w

GREAT BUYS AND CLOSEOUTS ON GARDEN AIDS



ALL PLASTIC POTS AND CONTAINERS

40% OFF

many sizes and fashion colors



ALL WATER AIDS

25% OFF

Sprinklers • Hoses
Water Cans



CORRY'S SLUG BAIT

1# Box - reg \$2.49

SALE \$1.79

RAIN GAUGES.....\$1.79 ea.

DAISY WHEEL.....\$1.00 ea.

LAWN EDGING.....\$7.49

4" x 30", green plastic, reg. \$10.49



Mon.-Sat. 9-6pm
Sun. 11-4pm
Located in Key Center

BAN

Hurry

WIN SALE!!

WHILE YOU DO IT!

SAVE 25%

to 40%

It Now With Great *Expectations*

The Weather's **RIGHT**
The Season's **RIGHT**

Choose from "the pick of the crop"

30% OFF ALL FRUIT TREES

Most varieties available in semi-dwarf
Grows 12' to 15'

APPLES • CHERRIES • PEARS • PLUMS

FALL IS LANDSCAPING SEASON

It is an excellent time to plan and plant. Plants have a chance to establish their roots in the cooler weather and be ready for a healthy growth spurt in the new year.

25% OFF

ENTIRE SELECTION OF NURSERY STOCK

Spring Starts Today

with Van Bloem's flower bulbs

Now is the time to select the finest of Holland's spring flowering bulbs — tulips, daffodils, hyacinths, crocus and more.

Plant them this fall and you'll be delighted with the results next spring. . .with Van Bloem's vigorous, sure-to-bloom bulbs.

15% OFF all Bulbs

It's also time to sow garlic for next years crop

From Holland To You . . .

Van Bloem's

PREMIUM QUALITY PLANTS

- **BROADLEAF EVERGREENS**
Rhododendrons • Azaleas • Camellias
and more
- **FLOWERING SHRUBS**
Pines • Hydrangeas • Spireas • Duetzia
Forsythia *and more*
- **ORNAMENTAL TREES**
Flowering Cherries, Plums, Crab
and more
- **SHADE TREES**
Oak • Maple • Locust • Ash
Catalapa *and more*
- **GROUND COVERS**
Ivy • Ajuga • Perwinkle • Rubus
Thyme *and more*



ANK CARDS WELCOME

Hurry, Hurry! - Sale Ends Oct. 15

Limited to Stock on Hand

884-3937

OPEN EVERYDAY

planning continued from page 1

along road frontage.

People were concerned about the tax burden of 50 feet of unusable land, and the loss of freedom to subdivide their property. Harry Anker of Anker Arabians, and Joyce Niemann of Sunnycrest Farm both testified about their concern over becoming part of the commercial zone in downtown Key Center. Mr. Anker commented that since 24% of the residents had signed the interim zoning petition, he could only conclude that 76% did not want it.

At the end of the public testimony, the planners recommended an area-wide rezone rather than an interim rezone. The reason given was that the Key Peninsula was not in the process of developing a comprehensive plan. Paul Cyr, district 7 councilman, heatedly objected to the area-wide rezone, stating "I get frustrated with the encumbrances of the bureaucracy" as part of his concern that local control would be lost in the process of an area-wide rezone, and that the procedure would be much longer. Planner Brady Smith responded that the reason for the area-wide rezone rather than the interim zoning was because the Pierce County Council had not passed a resolution or voted any funds for the development of a Key Peninsula comprehensive plan.

At the end of the hearing, the planners concluded that there was not a consensus in the community and that the hearing would be continued to Wednesday, October 4 at 7 pm at the Key Penin-

sula Civic Center. Paul Cyr said after the meeting that he would be working on a formal resolution to provide for the development of a Key Peninsula Comprehensive Plan to present to the Pierce County Council.

Arts Awards nominations

The Washington State Arts Commission is seeking nominations for the 1989 Governor's Arts Awards. The deadline for submitting nominations to the Arts Commission has been set for October 6, 1989.

Resident artists and arts organizations in all areas of the performing, visual and literary arts; service organizations, volunteers, and patrons; government agencies, businesses and corporations are eligible to be nominated.

All nominations should be submitted on the Governor's Arts Award Nomination Form, available from the Washington State Arts Commission, Mail Stop GH-11, Olympia, WA 98504-4111 or the KP News office. Or call Ann Anderson, Confidential Secretary, at the Commission office: (206) 753-3860.

The Governor's Arts Awards have recognized individuals, organizations, and educational institutions that have contributed to the advancement of the arts in Washington State.

Household Hazardous Waste Turn-In Day

The City of Tacoma and Pierce County are sponsoring the Third Annual Household Hazardous Waste Turn-In Day, Saturday, September 23 at Cheney Stadium just off Highway 16 at South 19th and Bantz Blvd. The hours will be 9 am to 3 pm.

Pesticides, oil base paints or solvents, hobby supplies, pool chemicals, household cleaners, aerosol products and other products that have the potential to harm human health and the environment can be turned in there. There is no charge for disposal of these items. The collected products will be separated and disposed of in an appropriate manner.

Wastes from businesses will not be accepted. Certain other types of products cannot be accepted. They are: explosives, compressed gas, dioxins (such as 2,4,5-T and silvex), biological wastes and batteries. Latex paints are not a hazardous waste. If there is only a small amount in the can, remove the lid and let it harden.

Citizens are advised to line a box with a plastic bag to protect against spilling or leaking containers. Leave products in

their original containers and wear gloves when handling materials. Separate poisons and pesticides from other products. Do not bring pets or children to Cheney Stadium on that day.

There is a toll-free number in Olympia for more information on the handling of hazardous substances, 1-800-633-7585. There is also a local information hot line at 591-2019.

Health insurance update for seniors

Training sessions to prepare volunteers to be teachers, advocates and insurance resource persons are available.

More than a half-a-million people in our state are eligible for Medicare Supplement policies. More than 150 companies now offer these policies. Being concerned about having enough insurance can lead to buying too much. Being baffled by the maze of state, federal and private insurance options, many seniors need help. To get help calls should be made to 597-7312. The Senior Health Insurance Benefits Advisors (SHIBA) a division of the state insurance commissioner's office, has a hot line 1-800-562-6900.

Training sessions and information is available at the Key Peninsula Community Services Center between 10 am and 12 noon on the following dates: Oct. 12, Nov. 16, and Dec. 14. Reservations are not necessary.

WETZEL'S

ALUMINUM

RECYCLING

PET PLASTIC'S

ALSO MILK JUG'S

CAN'S - BOTTLES

884-2772

STEEL

BRASS

GLASS

COPPER

P.E.T. PLASTIC MAKES CENTS FOR YOU!

From closet to ashes

The Ashes Auxiliary for Fire District 16 will be having a rummage sale in October down at the fire hall in Key Center. The date will be announced in a future issue of the NEWS.

Donations of clothing, furniture, etc., that are clean and usable are needed. If you have articles to donate that need to be picked up, contact Marie Schwenka at 884-2221, Irma Kelly 884-2848, Alice Palmer 884-3882 or any Ashes member.

"Bacon Bowl" to be held at Tacoma Dome

Rather than use professional fundraisers, the Seattle and Tacoma Police Departments decided this year to sell tickets themselves for their annual "Bacon Bowl" football game to be held on October 4. Funds raised from this event will go to support Mary Bridge Hospital, the Northwest Center for the Hearing Impaired, and other organizations. Tickets are \$6.00. For more information, call 927-8030.

Correction:

In the last issue of the NEWS, there was a reference in the In the Library column to a membership blank which could be filled out and returned; except that the blank wasn't there! We apologize for the error, and have included the membership blank in this issue.

Name: _____
 Address: _____
 Telephone: _____

Enclosed is \$3 yearly dues for membership in the Friends of Key Center Library, 8905 KPN, Lakebay, WA 98349, 884-2242

Cootiette #609 news

Our regular meeting is the third Thursday of the month, in the Whitmore room at the Civic Center at 7 pm.

This month the Pennants Cootiettes are working in the kitchen during Bingo night, serving pies and coffee.

On the second Tuesday of each month, we go to Cottesmore where the patients take part in a rhythm band.

The third Tuesday we help the patients at the Retsil Veterans Home to play Bingo, and we bring either cookies, pies or cakes.

We visit the Navy hospital monthly, serving fruit and kool-aid and cheering the patients.

LONGBRANCH ANNUAL SALMON DERBY

Sept. 30 & Oct. 1

1st Prize for largest Salmon.....	\$250.
2nd Prize.....	\$100.
3rd Prize.....	\$ 50.

Fresh water rod & reel - \$50 Savings Bond
 over 35 Merchandise Prizes

\$8.00 for Adults **\$4.00** under 14

Fishing area II *Two days of fishing*

Tickets sold at:
 Red Dogs, Key Western Hardware, Liquor Store,
 Longbranch Mercantile and the Marina in Longbranch

**THIS YEAR'S MYSTERY PRIZE IS A 18FT. CANOE
 DONATED BY KEY PEN MANUFACTURING**

KEY CENTER NATIONAL AUTO PARTS

COMPLETE LINE OF FOREIGN & DOMESTIC PARTS

DISCOUNT PRICES



Machine Shop Service

HOURS:

8:30 - 7:00 Mon - Fri

8:30 - 6:00 - Sat


10:00 - 4:00 Sun



KENDALL LUBRICANTS

WAGNER
BRAKE PRODUCTS

884 - 3307




CASCADE CABLEVISION

**BRINGS CABLE TV TO
THE KEY PENINSULA**

Cable service is now available
in Home and Palmer Lake.

Call 884-9250
for more information



- With Service Loaners... for life.
- New Cars, Trucks & Vans.
- Large Inventory of Top Quality used Cars & Trucks.
- Lease program, less down & smaller payments.

Call or come by, ask for:
-STEVE LAWSON-
 an expert in
 financing for 19 years.

858-9981 OFFICE
 884-3284 HOME
 5304 Pt. Fosdick Dr. N.W.

VAUGHN CHRISTIAN SCHOOL

... pursuing personal integrity
and academic excellence

Accepting Applications for the 1989-90 School Year

- PRE-KINDERGARTEN (ages 4-5)
Hands-on Learning
- KINDERGARTEN/PRE-FIRST (ages 5-6)
Phonics-based Reading Readiness
- GRADES 1 THROUGH 12
A Beka and A.C.E.

Vaughn offers superior academic training in individualized programs and a safe, secure atmosphere in which your child can learn and play.

884-9903

A ministry of Vaughn Community Church
 17616 Hall Rd., Vaughn, WA.



HIGHLAND CLEANERS

**20% off on any \$10.00 or more order.
Coupon must come in with order**

Open 7am to 6pm Mon. thru Fri.
9am to 4pm Sat.

564-6471

7110 6 Ave. Tacoma
Just across the bridge

HIGHLAND'S HARBOR CLEANERS

- Dry Cleaning
- Drapery Service
- Alterations
- Leather & Shirt Service

Open 6:30 to 6:30 Mon.-Fri.
9am to 4pm Sat.

851-3373

5508 State Rd. 16
Gig Harbor
Next to Dick Boyles Chevrolet

Free and reduced price school meals

Peninsula School District No. 401 today announced its policy for free and reduced price lunches and/or free and reduced price breakfasts for children who qualify according to the eligibility standards below, for meals served under the National School Lunch and/or School Breakfast Programs. Each school and the central office has a copy of the policy, which may be reviewed by any interested party.

Local school officials have adopted the following family size income criteria for determining eligibility:

ELIGIBILITY SCALE FOR FREE AND REDUCED PRICE MEALS Effective July 1, 1989 through June 30, 1990

Household size	--Free--			GROSS INCOME			--Reduced--		
	Year	Month	Week	Year	Month	Week	Year	Month	Week
1.	7,774	648	150	11,063	922	213			
2.	10,426	869	201	14,837	1,237	286			
3.	13,078	1,090	252	18,611	1,551	358			
4.	15,730	1,311	303	22,385	1,866	431			
5.	18,382	1,532	354	26,159	2,180	504			
6.	21,034	1,753	405	29,933	2,495	576			
7.	23,686	1,974	456	33,707	2,809	649			
8.	26,338	2,195	507	37,481	3,124	721			
For each additional family member add:									
	+2,652	+221	+51	+3,774	+315	+73			

Children from families whose income is at or below the levels shown are eligible for free and reduced price meals.

Application forms are being sent to all homes with a letter to parents or guardians. To apply for free or reduced price meals, households should fill out the application and return it to the school. The information provided on the application will be used for the purpose of determining eligibility and may be verified at any time during the school year by school or other program officials.

For the school officials to determine eligibility, the household must provide the following information listed on the application: Names of all household members, social security numbers of all adult household members or a statement that the household member does not possess one, total household income and the amount and source of income received by each household member, and the signature of an adult household member certifying that the information provided is correct. For a child who is a member of a food stamp household or AFDC (Aid to

Families with Dependent Children) assistance unit, the household need only provide the child's name, the food stamp or AFDC case number and printed name and signature of an adult member on the application.

Applications may be submitted at any time during the year.

Under the provisions of the free and reduced price policy the designated approving official(s) will review applications and determine eligibility. Parents or guardians dissatisfied with the ruling of the official may wish to discuss the decision with the approving official on an informal basis. Parents wishing to make a formal appeal may make a request either orally or in writing to Jack St. Clair, 14015 62nd Avenue NW, Gig Harbor, WA 98335, 857-6171, for a hearing on the decision.

Households are required to report increases in household income of over \$50 per month or \$600 per year and decreases in household size. In the case of households that provide a food stamp or AFDC case number, the household must

notify school officials of any termination of benefits for the child. Also, if a household member becomes unemployed or if the household size increases, the household should contact the school. Such changes may make the children of the household eligible for free or reduced meals if the household's income falls at or below the levels shown above.

In certain cases, foster children are also eligible for school meal benefits. If a household has foster children living with them and wishes to apply for them, the household should contact the school for more information.

The information provided by the household is confidential and will be used

only for the purposes of determining eligibility and verifying data.

In the operation of child feeding programs administered by the United States Department of Agriculture, no child will be discriminated against because of race, sex, age, color, national origin, or handicap. If any member of a household believes they have been discriminated against, they should write immediately to the Secretary of Agriculture, Washington, DC 20250.

Peninsula school district high school varsity football games are broadcast live each Friday at 7:30 pm on radio station KGHP 89.9, or 89.3 in Gig Harbor.

Carpet Upholstery Cleaning

4 Cleaning Systems **4 Different Prices**

Shampoo • Steam • Showcase • Dry

Servpro Sammy says:
Free on Location Surveys Clearly Given!

CARPET DYEING

Also Complete Home Cleaning
"One Call Cleans Them All"

- Carpets • Upholstery • Floors
- Draperies Dry Cleaned Without Removal
- Walls • Windows

851-6711

EDU-CARE

(Formerly Achievement Center)

LICENSED PRESCHOOL AND DAYCARE 18 MOS - 11 YRS

NOW ENROLLING FOR FALL

Serving Mintercreek & Purdy Elementary

15517 Goodrich Dr. NW Gig Harbor 6:00 A.M. - 6:00 P.M.

857-6545

Located on Burley Lagoon-Purdy

The Country Mouse



Here's our Schedule for Fall Classes

Oil Painting - Dori Richards	Mon. 1:00pm-4:00pm Fri. 10:00am-1:00pm
Tile Painting - Gini McDonough	Tues. 7:00pm-9:30pm Wed. 10:00am-12:30pm Thurs. 7:00pm-9:30pm
Workshops:	
Shirt Painting for beginners	Sept. 16 - 10am-2pm
Shirt Painting, intermediate	Sept. 30 - 10am-2pm

Reservations and Deposits Required for all Classes

10 - 6 Mon.-Sat.
884-2662

The Country Mouse
15916 84 St. KPN
In the Red Barn 1/2 mile south of Key Center

Next classified dead-line: October 2.

CLASSIFIEDS
884-4699
SERVICES

Semi-retired Carpenter. Basement to roof repairs. License BILLMC122N3. Call Bill 851-8157.

Japanese car? Now you don't have to leave the Peninsula to get expert care. Factory-trained in Toyota, Nissan, Honda, Mazda, Subaru. Northwest Auto Clinic. 857-5999

We're back! Personalized Tax Preparation-Accounting Services. Many years experience. Cal Marv Keizur 884-3566 - MYR-MAR Accounting Service and Notary Public. VISA/MC welcome.

Chimney Sweep and Inspections, serving the Key Peninsula. Insured. Peter Hitt, 851-3174

Aerobic Classes Key Peninsula Civic Center. Monday/Wednesday/Friday 9-10 am. Vicki 884-3642

Day Care-full/part time. openings all ages. close to Purdy. 857-4413 eves.

DEE'S FORAL
ARRANGING WORKSHOP

Oct. 4, 11, 18
\$35.00

Purdy Club House
13509 Goodnough Dr. N.W., Purdy
Limited Registration

Mail to: Mrs. D. Dwyer
12818 62 NW
Gig Harbor, WA 98835

NAME.....
ADDRESS.....

Morning class.....10:00 - 11:30 am
Evening class.....7:00 - 8:30 pm
(Please check one)

Payment enclosed \$35.00.....

LAKEBAY ROOFING
Pierce, Kitsap, King & Mason Counties

- RESIDENTIAL
- RE-ROOFING
- NEW CONSTRUCTION

SHAKE•HOT MOP•TILE
COMPOSITION•CEDAR SHINGLES

Free Estimates
884-2186
TOM ROLFZEN - Owner
WN. ST. CONSTR. REG. LAKE BR* 157KF

Licensed daycare available in Lakebay. Childcare for three preschool-age children open. \$1.50 hour, 6am- 6pm, Monday-Friday. Call Lisa for information 884-4286.

Northwest Auto Clinic, ASE certified, factory-trained, honest, friendly and ready to work for you. 857-5999.

Tole, Fabric, Rosemaling & canvas classes. Acrylic, fabric, oil paints, wood & supplies. 70 new Tole books for '89 plus many others. Tues-Sat, 10-5 pm. Homestead Crafts 857-3307.

Cheaper than a dealership! Less expensive than a tune-up shop! More masterful than your average mechanic! It's NW Auto Clinic, 9401 Hwy 302. 857-5999

C and L Services. Engine repair. Gas, diesel and marine. Hauling, sign painting. 884-4364.

Foot care now available in Allyn at The Comfort Company, 18400 Hwy 3. No appointment necessary.

Alterations: Professional-quality clothing alterations and custom sewing now available in Lakebay. Call 884-4625 for an appointment. Pick-up and delivery Purdy, Gig Harbor and Fox Island only.

JOE'S BUTCHER BLOCK PURDY

Custom MeatShop & Smoke House

Homemade Sausage, Bacon, Ham and Jerkies

We have Weekly Specials Stop by Today and Save

Grain Fed Beef Sides & 1/4's Grain Fed Hogs

Farm Slaughter Custom Cut & Wrap

857-7511
If no answer call: **876-3186**

Purdy Bridgeway Market and Farmer George's Meats

FOR SALE

Watkins Products are available, call Marv and Myrtle Keizur at 884-3566. VISA/MC welcome.

Solve your gift problems and never leave home. Over 2,000 items plus discounts up to 40%. Use your Visa and MC. Call Marv Keizur, Myr Mar Products 884-3566.

'87 Alpenlite. Reasonable. 8109 176th Ave. KPS. Drive by or write card.

We can't stop ourselves! Angel Guild has restocked all 'NEW' stuff at KC Corral. 884-9333.

76 Datsun B210 \$595 884-9448

HELP WANTED

Turn your spare time into cash. Gig Harbor Cleaning service now hiring housekeepers, full or part time. 851-5678.

Manicurist/Nail Artist. Excellent working conditions.. Your own station and benefits. Call 851-8811 for interview.

KP News urgently needs an add sales person. Position is part-time volunteer with a small wage and a commission on sales. 884-4699. Ask for Megan.

Combination housekeeper and office assistant needed for rural medical practice. Position is part time and includes cleaning facility along with filing, sorting and assisting front office personnel. If interested please send written resume and reference list to Dr. Wm. Roes, 8903 KPHN, Lakebay, WA. 98349. Person must be bondable and available for early morning hours.

WANTED

SEWING WANTED: Alterations-mending - zippers replaced - new garments. Call Myrtle 884-3566 VISA/MC welcome.

Dependable loving caregiver for 3 declawed indoor cats Dec. 12 - Jan. 12. My place (vicinity KPMS) or yours. 884-9441

Free to good home. Poodle mix. spayed, shots, loving, housebroke. 884-3517

REAL ESTATE

By owner - nice 2 bedroom home at Taylor Bay. \$42,500. 884-9448

KEY PENINSULA LUTHERAN CHURCH

N.E. Corner of Lackey Road and the Key Peninsula Hwy.
884-3312

PASTOR:

Dick Brandt
SUNDAYS:
Sunday School 9:15 am
Worship 10:30 am

Come Share the Spirit!

MARY KAY

MOST SKIN CARE AND GLAMOUR PRODUCTS ARE MISSING ONE VITAL INGREDIENT. ADVICE

Mary Kay provides you with a personal skin care or Color Awareness consultation. And our advice is FREE. Call today.

Betty Coons, R.N.,
Beauty Consultant
857-6041

Special discount available with ad exp. 10/31/89

DJ'S TIRE & CAR CARE SERVICE

NEW TIRE SPECIAL!!!

coupon only

\$2.00 off ALIGNMENT
\$2.00 off SHOCKS

PASSENGER CAR ONLY
Does not include STRUTS

exp. 10/31/89

COMPLETE SERVICE

- MAJOR & MINOR TUNE-UPS
- COMPUTERIZED TUNE-UP
- EXHAUST SYSTEMS (custom bending & LIFE TIME mufflers)
- COMPLETE BRAKE WORK
- BATTERIES • SHOCKS
- FRONT END ALIGNMENT

851-4606

13712 S.R. 302
GIG HARBOR, WA. 98335

Old Country Inn Style Traditional Sunday Brunch

9 a.m. - 2 p.m.

A multitude of courses served family-style



the **Key**

Dining Room

Now Serving
Lunch

Fri. & Sat. 11-2
(featuring Salad Buffet \$4.95)

Dinner
Wed. - Sun. 5 p.m.

Reservations
884-4403
9013 KPN, Key Center

Featuring
FRESH N.W. & LOCAL PRODUCTS.
With a HEART HEALTHY FOCUS
Naturally Raised Meat & Poultry • Seafood • Pastas
Northwest Beer and Wines

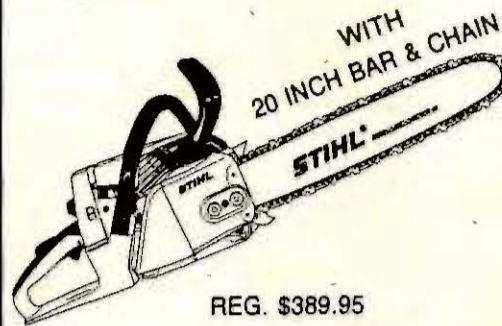
Marcy and Dale Towry, Proprietors

FALL BONUS SPECIALS

from **STIHL**®

SAVE
\$50.00

STIHL'S
NEW
026



REG. \$389.95
\$339.95



STIHL'S
FALL BONUS

SAVE \$85.40 BY BUYING
A STIHL CARRYING CASE KIT

\$299.95 WITH PURCHASE
OF SAW

SELECT THE STIHL MODEL THAT FITS
YOUR NEEDS, THEN PURCHASE A STIHL
CARRYING CASE KIT FOR \$29.95.

STIHL CARRYING CASE KIT CONTAINS:
CARRYING CASE
EXTRA CUTTING CHAIN
ENGINE OIL • STIHL CAP AND
MANY USEFUL TOOLS

FALL BONUS EXPIRES 12-31-89

Complete Small Engine Sales & Service SPENCER POWER EQUIPMENT

N.E. 22451 Hiway 3
Belfair, Wa
(Near South Shore Turn Off)

275-2211

9:00-5:30 M-F, 9-4 Sat.

The Country Mouse



We're so glad to be back home!

ALL BASKETS 1/2 HALF OFF
IN SEPTEMBER

CLOSING OUT SOME ODDS AND ENDS
AT HALF PRICE

NEW SHIPMENT OF
MOTHER COME HOME CARDS IS IN

WE HAVE REPLENISHED OUR STOCK OF
KEY CHAIN MUSIC BOXES

*Hope you'll come
and visit us
in the barn soon!*

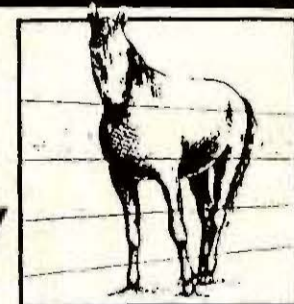
10-6 Mon. - Sat.
884-2662

The Country Monse
15916 84 St. KPN
In the Red Barn 1/2 mile south of Key Center

K & J FEED

Key Center, WA
884-9811

POWER FENCE
MEANS NEVER
HAVING TO SAY
YOUR'RE SORRY



Snell Power Fence pro-
tects thousands of horses
from fence related injuries every day of the year. Con-
structed of Hi-Tensile smooth wire and Fiberglass or
Insultimber™ Posts, Power Fence won't cut or hurt your
animals; it will even flex if hit. The completely harm-
less electronic pulse of the Gallagher/Snell Energizers
give horses a new respect for fencing.

If you never want to tell your horses that you're sorry
they got hurt in a fence, protect them with Power Fence.
It's easy to build, will last a lifetime and costs a lot less
then other fencing. For more information contact:

Call
Wally For
Details
884-9811



OPEN 7 DAYS A WEEK

Mon thru Sat 9:00-6:30
Sun 10:00-4:00

1/2 mile south of
Key Center

"IT'S"
NEW
EASY
HOT

CHEAPER

**Almost
Maintenance
Free**

**Looks
Great**