

BOXHOLDER

NOVEMBER

Nonprofit Org.
U.S. POSTAGE
PAID
PERMIT NO. 2
VAUGHN, WA. 98394



KEY PENINSULA CIVIC CENTER

NEWSLETTER

CIRCULATION 3750

NEIGHBORHOOD NEWS FROM WAUNA TO LONGBRANCH

VOL. IV Issue No. 11

PURDY BY-PASS OPENS...HALLELUIAH!

LONG AWAITED BY-PASS OPENS

On November 15 at 10:30, there will be a very important ceremony at Purdy. Community leaders and state highway officials will gather to cut the ribbon on the 'new' Highway 16. Governor Dixy Lee Ray has been invited. After the ribbon cutting, the first vehicle to travel the road will be a Peninsula School District bus. Following the ceremony, there will be a lunch at the Educational Service Center for civic representatives.

If you want to attend the ceremony, proceed north on the old highway to the Burley-Olalla exit where there will be directions. Or go north to 144th Street and turn right to observe the event from atop the new overpass.

NEW COMMERCIAL BUILDING FOR KEY CENTER

More progress is coming to our peninsula in the form of a new professional building at Key Center. Norma and Noland Montgomery have purchased and will develop the property across the street from the Key Center Fire Station.

Mr. Montgomery, an architect, has drawn plans for an L-shaped building containing 10,000 square feet of space. There will be a new pharmacy, Marcia and Leon Smith's clothing store for the entire family, plus possible plans for a drive-in bank and other professional offices.

The Montgomerys will apply for the building permit this month, with construction to start in the spring. They are enthusiastic about the project because they want to grow with the community and are providing space for needed services.

Mr. Montgomery is a graduate of the University of Utah and was an architect in California for thirty years before retiring here two years ago. They live on Herron Road.



ARTS & CRAFTS FAIR DECEMBER 2 COMPLETE SELL-OUT NOW

Loretta LaRue, General Chairman for the Arts and Crafts Fair to be held on Saturday, December 2 from 10 a.m. to 4 p.m. indicated that all 35 tables have been reserved and a waiting list is being made to handle any additional requests. Anyone still interested in obtaining a space may call 884-2495.

Interesting and unique merchandise will be available at the Fair including such items as; pastries, ceramics, macrame designs, dolls, quilts, jewelry, wood products, air brush artistry and even a Santa Claus will be there to greet the little children and have their pictures taken.

A new innovation will also be started at this event. A Wine-Cheese and Beer-Sausage tasting Festival will be held in the Gold Room, complete with bartenders and barmaids.

Loretta added, "Everyone should start now to save their pennies for Christmas gifts. Come to the Fair with a complete list and you will find almost everything you will need for sale. Gifts which are hand-made always make more of an impression than the ordinary store-bought items."

SKATE - A - THON TO KICKOFF REOPENING OF REGULAR SKATING

Mike Corwell, Skating Manager and Eileen Ramsdell, creator of the winning money raising event, will play hosts to all those young and old skaters who enter the Skate-A-Thon on Saturday, November 4 from 9 a.m. to ???

Prizes will be awarded to skaters of all ages. Entrance requirements are fee of \$5.00 or four sponsors at 25¢ per hour. Sponsor sheets are available at Walt's Fine Foods, the Home Grocery Store, the Longbranch Mercantile, The Peninsula Youth Center, and from the caretakers Ruby and Ernie Rouse at the Civic Center.


Spectators for the Skate-A-Thon will be charged 25¢ per person, children under 5 will be admitted free.

Skating on a regular basis will start the following Friday, November 10. Hours for skating will remain the same: 6th grade and under - 7 p.m. to 9 p.m. - Jr. High and over - 9 p.m. to 11:30 p.m. Prices will be 6th grade and under: \$1.00, Jr. High and High School students: \$1.50, and adults: \$1.75.

GOOD CITIZEN GIVES FLAG

Last month, Mrs. Claude Young of Tacoma, donated to Fire District #16, a 5' by 9' American flag. Mrs. Young, who has property at Jackson Lake, had read in the Newsletter of the theft of a flag from the Key Center Fire Station, stopped by with her flag, saying she would like to see it put to such good use.

This flag is gratefully accepted with the thanks of the Fire Department and the community, and will be flown at the Key Center Station.



KEY PENINSULA CIVIC CENTER
NEWSLETTER

P.O. Box 12, Vaughn, Wa. 98394

PUBLISHER
Key Peninsula Civic Center
President - Robert Schottland

EDITORS
Marylou Moore 884-2011
Pat Greetham 884-2500

ADVERTISING
Henry Stock 884-3739

WELCOME 1979 AT NEW YEAR'S EVE BALL AT THE CIVIC CENTER

Shirley Olson, Nita Akins and Loretta LaRue will act as Co-Hostesses for the 1978-79 New Year's Eve Ball scheduled for Sunday, December 31, 1978 from 8 p.m. to 2 a.m.

New to the event this year will be the elegant prime rib dinner which will be a catered affair and will be served buffet style at midnight.

"The Chaparrals" will provide the music for this festive occasion. Some other innovations will include: "The Secret Chair" game and the presentation of a "New Year's Resolution."

Cost of the event will be \$25.00 per couple and \$12.50 per person. Reservations are a **MUST!** Call Shirley Olson 884-2481. There will be a limited number of reservations so get yours in early!

Our Pres Sez...

By Bob Schottland

"Seven come eleven," "beat twelve and win," "one, three and six," "yippee 21, I win," if these exclamations sound unfamiliar to you, then you were one of the few people on the peninsula who missed the fun, entertainment, enjoyment and good food had by all at the Civic Center for the 1st Annual Reno Night.

Approximately 2,000 people came and went during the 12 hour extravaganza which proved to be not only a social success but one of the largest money raising activities ever held at the Center.

It would be redundant to express my thanks and appreciation to all the people who participated in this outstanding program, but there will never be enough words to tell each individual how much their time, effort and hard work paid off and how much self-satisfaction each person gained from this experience.

All registered voters who are looking forward to the upcoming elections have heard numerous advertisements on television, in the newspapers and magazines telling us that "we can make a difference."

It is my belief, that the Civic Center serves a significant role in the lives of every resident on the peninsula. This historical site has served as a school, a meeting place, a social hall, an educational and literary facility and it is obvious that it must offer more.

This is not to say that the events and activities that have been held here in the past must go. No indeed! What it means is that we must grow with the times. New programs must be given a chance to prove their value.

What I envision for the Center, is that to realize its full potential use, the Center must be supported by a broader range of activities, services, and people lending their personal support. If this is done we will all "see the difference."

You have the opportunity to contribute too. Not only can you attend the activities, but you can help on the Newsletter staff, help in the kitchen, come to the Work Parties, recommend potential Board members, attend at least one Board meeting a year, or, if you're willing to take the time, you can provide the leadership as an officer.

Whatever role you and I choose, we have the opportunity to become active Civic Center helpers. If by so doing "we make a difference," then the goals and objectives that were established at the beginning of the year will be much closer to realization.



Carol's Office Services

Peacock Bldg. #2 858-9968
3123 - 56th St. N.W. Gig Harbor

VARIOUS OFFICE FACILITIES DESIGNED TO MEET THE NEEDS OF SMALL BUSINESSES.

SMALL BUSINESS GUIDANCE

TROUBLE-SHOOTING
ACCOUNTING-TAXES
BOOKKEEPING-ALL PHASES
TYPING
PHOTO-COPY
PHONE ANSWERING SERVICE

8:00 A.M. - 5:00 P.M. MON.-FRIDAY
EVENINGS BY APPOINTMENT

CAROL FREDERICK, OWNER HOME 876-8347

KEY PENINSULA CIVIC CENTER

PRESENTS

Skate-A-Thon

SATURDAY, NOV. 4 9 A.M. TO ?

ADMISSION: \$5.00 OR 4 OR MORE
SPONSORS @ 25¢ EACH

PRIZES:

ENDURANCE HIGHEST AMT.
COLLECTED FROM
SPONSORS

1ST: \$25.00 OR A PAIR OF SKATES SAME PRIZES

2ND: \$15.00 OR A SKATING PASS AS FOR THE
FOR A YEAR ENDURANCE

3RD: CASE OF POP SPECTATORS
ADMISSION: 25¢

KEY PENINSULA CIVIC CENTER

PRESENTS

ARTS & CRAFTS FAIR AND

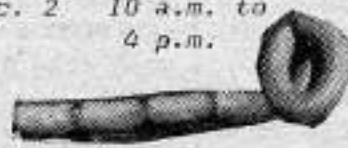
A NEW TRADITION....

A TASTING EXPERIENCE ! ! ! !

WINE AND CHEESES! Price: \$1.00

BEER AND SAUSAGES! Price: \$1.00

Saturday, Dec. 2 10 a.m. to
4 p.m.



KEY PENINSULA
CIVIC CENTER
Vaughn, WA.



PRESENTS

1978-79

New Year's Eve Ball

\$25.00 per couple
\$12.50 per person

Make Your Reservations NOW
FOR NEW YEAR'S EVE

CALL: Shirley Olson - 884-2481

OPIE COMPUTERIZES

W. H. Opie & Company announces that it has installed the PRC Realty Systems Computer in its local offices. Opie is proud to note that it is the only local office presently offering this important advantage in real estate marketing to it's Key Peninsula clients.

According to George McGilliard, Managing Broker for Opie, "The PRC terminal is a very important advancement in our already very effective marketing program. Within literally minutes after becoming agents for the sale of property, we can provide full information to all 1500 plus Realtors in Pierce County and in some cases South King County Realtors as well.

"For those buying property through Opie," McGilliard continues, "our new system means immediate access to the total inventory in any area of Pierce County. We are very pleased to be the only local office offering this important marketing tool to our clients. Opie pledges to continue to be the first with the best, now and in the future."

W. H. Opie, now in its second year of service to the Key Peninsula and its ninetieth year of service to Pierce County, has offices locally at 11625 State Highway 302.

LOCAL DELEGATE TO OLYMPIA

Roy P. Wahle, Chairman of the Governor's Conference Steering Committee, is pleased to announce that Margaret Keasler of Vaughn has been appointed as a delegate to the Governor's Conference on Library and Information Services. This is an honor for our delegate and area. The conference will be held in Olympia next April.

In the meantime, Margaret has a lot of "homework" to do. Because it is expected that delegates need to be prepared and knowledgeable about issues and concerns from their area, she is committed to:

1. Read materials provided as background.
2. Attend and participate in local and regional activities.
3. Attend a Regional caucus.
4. Submit biographical information.

Margaret is the current president of the Vaughn Library Association. She recently attended a workshop at Tenzler Library in Lakewood. There was information of library buildings and Friends groups activities to be brought back to inspire the local group.

The Friends of the Library group is now preparing a booth for the Civic Center Arts and Crafts Fair to support our special library projects.

STUDY INITIATIVE 350 BEFORE VOTING

The only statewide ballot issue to appear on the ballot this November will be Initiative 350. An initiative of the people is original legislation by the voters, proposing new law (or changing existing laws) without consideration by legislators.

The ballot title of Initiative 350 is: Shall public educational authorities be prohibited from assigning students to other than the nearest or next-nearest school with limited exceptions?

The Initiative is sponsored by a group of Seattle citizens organized as the Citizens for Voluntary Integration Committee (CIVIC) with the purpose of:

- a. Opposing loss of freedom inherent in mandatory school assignments based on racial or ethnic identification, and,
- b. promoting quality education on an equal basis.

CIVIC was formed as a result of Seattle's obligation to desegregate their schools. In April, 1977, the Department of Health Education and Welfare (HEW) determined that Seattle school district was in violation of the 1964 Civil Rights Act which forbids discrimination on account of race by recipients of federal funds and threatened to withhold federal funds from the district, as much as \$14,000,000. The School District was also threatened with a lawsuit in the federal courts which would have resulted in a federal judge taking over control of their schools as far as attendance patterns.

The Seattle School Board, together with a large number of Seattle residents, was able to forestall loss of these essential monies and court mandated busing with the plan which they are using this fall. Since the school district cannot change housing patterns, they have found it necessary to change attendance patterns for various schools and furnish transportation to and from these school.

continued on Page 19....



R. B. DRILLING & GEN'L CONTRACTING

EXCAVATING
HAULING
HOME CONST.
MASONRY
REMODELING

P.O. BOX 63
VAUGHN, WA
884-3567



LONGBRANCH Community Church

Sun. Sch.: 10 a.m.
Bible Study: 10 am
Worship: 11 a.m.
Dr. James King
Longbranch, WA.

**TURKEY DINNER
& ALL THE
TRIMMINGS**

VJ'S COUNTRY INN

Now taking reservations for
Thanksgiving Day.

Hours 12 to 7 p.m.
by reservation only

884-3743

Home, WA.

Westward Ho Ranch

girls horse ranch



harry & barbara nimrick

(206) 857-2625
route 4 box 4783-1
gig harbor, washington 98335

designed for girls who love horses



SUCCESS IS HAVING

R_x

DON ZIMMERMAN
as "PIT BOSS" for Reno Night

FOR QUALITY - COURTESY - SERVICE
SHOP

Purdy Pharmacy

6705 Tye Dr., N.W.

Purdy

857-2183

LONGBRANCH CHURCH ANNIVERSARY

Sunday October 15th the Longbranch Community Church observed the 30th anniversary in the present building. It was a very successful day due in large part to the enthusiasm and careful planning done by the women of the church especially Jean Humphrey and Marquerite Bussard. Finding the present addresses of former members and pastors for the past thirty years was a formidable task and took hours of time. Glancing through the guest book that was signed by about 100 guests, one could find names from as far away as Flathead Lake, Montana.

The services opened with a prayer by Frank Price, who occupied the pulpit just before his uncle, Dr. Richard Decker, began his long term with the church. Dr. James King, the present pastor, then asked if any of the guests would like to say anything. Among those who responded were the Reverend R. G. de Bock, Roy Payne, the Reverend Ted Koopmans and the Granlunds, Windy and Barbara.

The music was exceptionally beautiful. Joyce Case sang "How Beautiful the Mountains". Her voice was never lovelier. Cindy McAllister and Kirk Anthony had each selected "This is My Father's World" for a solo and since it wasn't discovered until the last minute they agreed to share the song - each one singing a stanza alone and then together on the last stanza. The congregation loved it.

By this time Dr. King decided it was getting near closing time so he would save his talk until the following Sunday. Everyone was invited to the fellowship hall for a delicious buffet luncheon while they renewed old friendships.

BUREAUCRAT BLUES

Budgets, levies and taxes,
Bureaucrats by the score.
Now's the time to take a stand.
Do we know what we're voting for?
Have we lost sight of Independence,
Or why we wrote the Constitution?
For all those special interests,
We must make restitution.

Repeal all those commissions
Abounding in the news.
Our country has a virus
Called the Bureaucrat Blues.
Big daddy, cut the apron strings.
We've got the Bureaucrat Blues.

There are rules and laws of justice
To protect us from ourselves,
Printed up in volumes
That line attorneys' shelves.
The bureaus and the unions
Are walking hand in hand,
Upsetting the natural balance
Of supply and demand.

Fulfilling campaign promises
Would take a higher power.
All those soluble promises
Dissolve in the ivory tower.
There are legislative sessions
To sharpen up the axes.
Each must protect his program,
And they end up raising taxes.

We must live within our incomes,
Not borrow beyond our means.
We can't pass a "special levy"
To accomplish this year's dreams,
So our elected politicians
Should make the budget fit.
Why should we "repossess"
Last year's deficit - - -

- - - Carol Frederick
© 1978

"GLAD TIDINGS" SHOP OPENS

The Christmas shop at Burley has officially opened under the creative hand of Marge Cantwell. An inspection of the shop will show many items made by local crafts people. These include wooden trains and toys made by Marge's mother, Anna Reid; carved peppermint colored candles; stained glass and ceramic ornaments; turquoise, coral and mother-of-pearl guaranteed jewelry, worked in silver by Ken Warner of Horse-shoe Lake.

She has some imported items, such as miniature glass nativity scenes, Christmas balls, and a "Scandehoovian Kitchen Witch." When hung in your kitchen, this 6" doll guarantees that your cakes won't fall, your gravy won't be lumpy, coffee won't be bitter, lutefisk won't be bad and your jelly will jell.

The shop is in a historic location behind the Burley Post Office. It has its original beautiful cedar walls and contains large photos of turn-of-the-century Burley Colony, framed in barnwood of the same era. Marge's grandfather is in one of the pictures, Mrs. Reid having been born and raised in Burley. She related some of the area's unique history. She said the pilings seen on the Purdy Spit were there when her mother came in 1904 from the Isle of Man.

The shop is an outlet for those who have handcrafted items for sale. It will be open Monday through Saturday from 10 a.m. to 4 p.m. through December. Anyone visiting the shop will not only get a whiff of Christmas, but a piece of history.



GO SEAHAWKS #1

We've got what you NEED
For your Holiday Crafts & Decor

STYRO FOAM WREATHS BEADS
BALLS, EGGS & CONES STRAW WREATHS
(ALL SIZES)

MINIS RIBBONS
CORN HUSKS CALICOS

STRAW BROOMS

Sherman's Arts & Crafts
Lakebay, WA. 98349
884-2454

Open Everyday - 11 a.m. - 5:30 p.m.
Till 9 p.m. - Tuesday & Thursday

Minter Drive-in

SUPER:
Hamburgers
Fish burgers
Hard Ice Cream - 11 flavors
plus many more appetite appeasers

HOURS: 11 a.m. - 8 p.m.

HWY. 302 AT MINTER 857-4859

OLD FASHIONED
SMOKE HOUSE
MEATS

DEDICATED TO
FINE EATING

MACON BACON

CHEESE, SALAMI,
SAUSAGE

C. M. WHITE
OWNER

RETAIL ONLY 857-4502

Corner of Cramer Rd. & SR 302

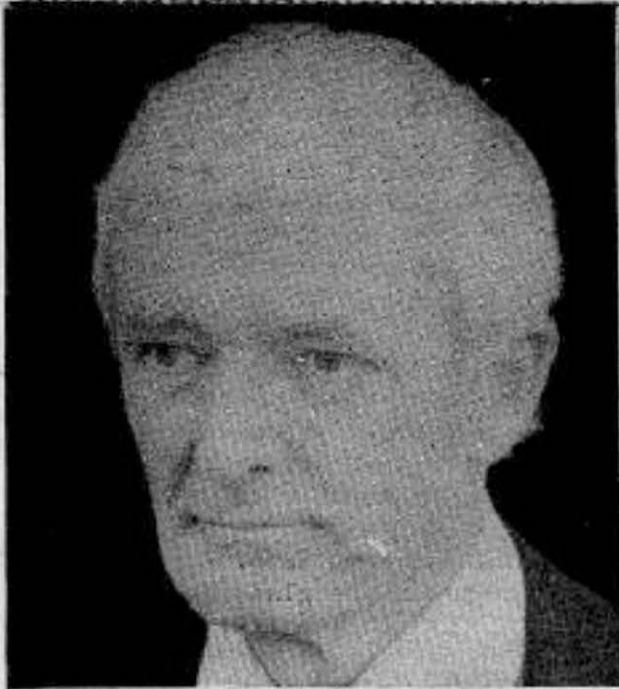
GLAD TIDINGS
IN OLD
CIRCLE CITY
BURLEY, WA.

P.O. Box 43
BURLEY, WA. 98321

Vaughn Bay Lumber Co., Inc.

Dale Van Slyke 884-2874
Harm Van Slyke 884-3738
Tom Van Slyke 884-3428

LOGGING ONLY
Route 4 Box 4712
Gig Harbor, Washington 98335



ART GALLAGHAN, CANDIDATE

Art Gallagher, candidate for Senator, 26th District, has been an active resident of the Key Peninsula, where he lived for several years as Superintendent of Mintercreek Salmon Hatchery. He had children in the local schools and supplied the schools with special displays, as well as offering tours at the hatchery. Due to his vital interest, he ran for the school board and well represented our areas and interests there.

If elected as State Senator, Art will be in a position to carry out the mandates of our local citizens. He is eager to carry the message to the legislature, and bring back the best use of the tax dollar from there.

GO Gallagher!

For sensible,
responsible
accountable
government.

Thor Tollefson, Dr. Charles Bogue and Jim Hill,
Co-chairmen/Senate/26th District/Republican,
P. O. Box 1979
Gig Harbor, WA 98335

CANDIDATE

Dana Dyer, Republican candidate for the State House of Representatives, has been consistent in his call for reduction in the size of government, for lessening of the tax load, for an end to spiraling inflation, and for return to responsible leadership in government.

Since the start of his campaign, Dyer has said that it is time to stop funding special interest "wants" ahead of the "needs" of the people.

Dyer represents no special interest group. His total concern is for the people he will represent.

Dyer has stressed that the voter has a clear choice in the November 7 general election. His opponent has said that, as a freshman Representative, the District should not expect her to do very much. Dyer believes that to be an unsound position. Dyer believes he can provide the responsible representation the people want and most certainly deserve.

Dyer's opponent has also said that it is unrealistic to expect to do anything about high taxes. Dyer believes that we cannot continue under the existing load. Dyer believes that, as California did with Proposition 13, Washington State can use Initiative 62 as a starting point for correcting the tax problem.

elect
DANA DYER

STATE REPRESENTATIVE- REPUBLICAN
26TH DISTRICT POSITION 1

*Pd. for by Citizens Committee to
elect DANA DYER.
Chr. William Dickson, 759-1495*

INSTALLER'S HOME PHONE
884-3203
LAKE MINTERWOOD

HOME-SERVICE
UPHOLSTERY & CARPET

CARPETS
Vinyl FLOORING
PROFESSIONALLY
INSTALLED.

Shop Phone
876-0799
PORT ORCHARD

OVER 30yr's EXPERIENCE
FAST FRIENDLY SERVICE
"VERY REASONABLE PRICES"

Congratulations to the members of the 1978 Board of Trustees

Many people working under the same hat for the good of the Center



BOB SCHOTTLAND
President



RAY DURWARD
Vice-President



PAT LUMMINS
Treasurer



MARIAN WAGNER
Secretary



LARRY ALVAR
Photographer



CAMERA SHY
ORA AFDEM
V.F.W. Aux.



BETTY BEAL
Carney Lake Rep.



MARGUERITE BUSSARD
Ashes



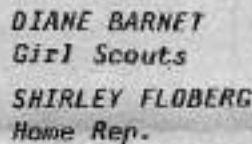
SALLY CORNMAN
Food Chairman



DON DAVIS
Lake Minterwood



JIM CUMMINS
Leon Smith
Co-Chairman
Salmon Derby



DIANE BARNET
Girl Scouts



SHIRLEY FLOBERG
Home Rep.
MARYLOU MOORE
PAT GREETHAM
Co-Editors,
Newsletter



ED HAINES
Lake Minterwood



TOR JOHANNESSEN
Lutheran Church



LORETTA LARUE
Glen Cove Rep.
Ways & Means Ch.



DUANE FLEMING
Reno Night Ch.



DON McDONALD
Pierce Co. Rep.



PHILOMENA GREEN
Lake of the Woods



SHIRLEY OLSON
Key Center Rep.



JIM PENFIELD
Longbranch Rep.



BARBARA RICHARDS
Garden Club Rep.



NED RICHARDS
Pioneer Days
Food Chairman



ELSIE OLSON
Historical Soc.



ALICE PALMER
Cootiettes



HENRY STOCK
Rocky Bay Rep.



ELEANOR STOCK
Bridge Club



RHYS WOOD
Vaughn Rep.



ERNIE & RUBY ROUSE
Caretakers



JOHN RYPDALH
Bingo Chairman



THIS AD COMPLIMENTS OF
The Peninsula State Bank

GIG HARBOR
PURDY
POINT FOSDICK SQUARE

884-2345
858-6111
Member FDIC

Little by LITTLE

Several months ago I wrote about the beautiful tiny carved head found by Peg Selby's granddaughter while playing on the beach. Dale McGinnis, who teaches archeology at Steilacoom College was interested in it and showed it to one of his colleagues to get his expert opinion as to what it was - how authentic and how old. They decided it was an Indian artifact of some sort, probably used to smooth arrow shafts. Indians often spent hours decorating tools and everyday articles. But when Margaret Whittlesey, who lives near on the same stretch of beach, recently found another piece of white quartz carved very much like the other head, the archeologists feel that it is most unusual and should be investigated more thoroughly. It's quite evident that the same artist did both carved heads - they are well done and quite beautiful.

Now that mushroom season is about over I, for one, will miss the thrill of roaming the woods, looking for tips of yellow chanterelles pushing through the moss. Last week I spied a white one back under a fallen tree. So I got down and crawled, ala worm to get it - then followed more and more until my basket was full and I had gone quite a ways into the underbrush in the same prone position. Now, how to get back to where I had started - no room to turn around and of course, no way to stand up or even crawl on hands and knees? So back I went, stretched out full length on my stomach.

Friends tell me that chanterelles sell for \$7.50 a pound (that's a lot of mushrooms) at the Pike Street Market and that they have a hard time keeping

up with the demand. Also that at least one of the big hotels has "chopped chanterelles on steak" listed on its dinner menu.

There hasn't been a fall since I've been gathering mushrooms when there have been so many. Everyone I talk to tells of getting many pounds of them and what a "high" we get when we discover a new place or a patch loaded with the golden nuggets under old logs, salal etc. I can't understand why some young people's lives are so empty and unexciting that they crave artificial stimulants to get a "high" - hence the craze to get the mushroom (I've forgotten the botanical name) that produces a psychedelic experience. I pity them.

Ruth Little

SENIOR SERVICES

In order to serve Senior Citizens more effectively, Pierce County Community Action Agency's Department of Community Services is extending its Senior services to the Key Peninsula. The office is housed in the V.F.W. Room of the Key Peninsula Civic Center and will be staffed by Peri Trivison, Outreach Program Developer, and Dorothy Phillips, Resource Co-ordinator.

Services include information, referral, and direct services, such as assisting with Medicare papers and Senior property tax exemptions. If you are a Senior Citizen with questions in regard to finances, housekeeping, home repair, or other concerns, please call our temporary telephone number, 884-2762.

Pd. Pol. Adv.

Dan Dawson

STATE REPRESENTATIVE - 26TH DIST.
POSITION #2
The TAX BUCK\$ Stop Here!!



PAST PRESIDENT - PENINSULA HELMSMAN
FORMER DIRECTOR - P.A.A.
1ST VICE PRESIDENT - GIG HARBOR LIONS

The Peninsula needs a Representative!

Dan knows the growing problems of our communities!

SEND DAN TO OLYMPIA TO REPRESENT US!

MINTER CREEK DRILLING

and
Complete Water Systems
Commercial and Domestic



EARL FOUTCH
Owner

857-4609
Gig Harbor



THE WOODEN BIRD

GIFT GALLERY

NOW OPEN IN OLYMPIC VILLAGE

GIFTS, BASKETS, CANDLES

DECYS, POSTERS, CLOCKS

The Most Treasured Gift

Your Portrait

BY
GLEN GROSSE PHOTOGRAPHY
Gig Harbor

CHRISTMAS SPECIAL

CAPTIVATE THE REAL YOU IN YOUR OWN NATURAL SETTING
FAMILY OR SINGLE - AT HOME - QUALITY PORTRAIT
SITTING PLUS - ONE 8x10 COLOR - \$17.50

MONDAY THRU THURSDAY - DAYS OR EVENINGS
WEEKENDS ARE ALL BOOKED
CHRISTMAS DEADLINE - NOV. 16

PENINSULA AREA STUDENT SPECIAL

SENIOR PICTURES - SITTING - PLUS ONE 8x10 COLOR - \$12.00
SCENIC, NATURAL OUTDOOR PORTRAITS (WEATHER PERMITTING)
SCHEDULE YOUR APPOINTMENT NOW - 858-7228 OR 858-9968

JAMES BEAVER, CANDIDATE

James E. Beaver is Republican candidate for Congress, 6th District. Beaver, 48, is Senior Professor of Law at the University of Puget Sound School of Law, a graduate of Wesleyan University, Middletown, Conn., in 1952. He was second in his class, with High Honors in General Scholarship and High Distinction in History. He received his Law degree from the University of Chicago Law School in 1958, where he was first in his class, and Managing Editor of the University of Chicago Law Review. Beaver also studied at the University of Vienna. He has served in the Army of the United States. He practiced law for eight years as a trial lawyer. He has taught Law since 1965, joining the University of Puget Sound School of Law in 1972, when it opened its doors.

Beaver is running an "issues" campaign. He advocates passage of the Kemp-Roth Bill to cut federal income taxes one third over a three year period. He favors substantial reduction in federal spending, which has grown from \$118 billion in 1965 to \$539 billion scheduled for 1979. He proposes to trim federal regulation of business and private affairs, and to reduce the bureaucracy. He wants to make the United States stronger than, rather than equal to, the Soviet Union in defense and foreign affairs.

CHURCH BAZAAR

The Longbranch Church will have its annual Christmas Bazaar and Luncheon on Saturday, November 4 from 10 - 4 p.m.

Luncheon with dessert and coffee will be served starting at noon. The ever popular bakery will be available along with candy and handmade gifts.

The 30th anniversary for the Church was a fine success and thanks go to all who helped and attended. On Nov. 19th, Rev. De Bock of Puyallup will speak in the absence of Dr. King.



ASHES

Marguerite Bussard, Ashes president, would like to thank everyone who supported the October Rummage Sale. \$150 went to the Ambulance Fund, the remainder to the Eric Brown Fund. During fire prevention week, the Ashes hosted refreshments and tours of the fire station.

A drawing will be held for a handmade afghan which has been donated to the group. For tickets call Marguerite Bussard, 884-3771. The winner will be announced before Christmas.

The next regular meeting of the Ashes will be at 10:00 a.m. Thursday, November 2 at Station #2 in Key Center. At that time the Vaughn Garden Club will present an electric blanket for the ambulance. A potluck will follow the meeting.

CANDIDATE

Cecil Clark, Republican candidate for Pierce County Clerk, is an experienced administrator. He believes that, "Experience is Important," to the people of Pierce County.

As the duties and responsibilities of the County Clerk are principally administrative and not political, your vote on November 7th is extremely crucial to improve the efficiency and modernize procedures for better and less costly public service.

Politics as usual is not good enough for Pierce County residents!

Vote for Cecil Clark for County Clerk.



SUPPLIES for WEAVING, SPINNING, and OTHER FIBER ARTS

Gallery * Gifts * Workshops
Custom Clothing * Textiles

fibers, etc.
565-5280
7216 27th W. UNIVERSITY PLACE
TACOMA

Nancy's
HOURS: 12 - 5 P.M.
TUESDAY - SATURDAY

Nic
Nacs &
ecessities
Antiques

Nancy Ewing
884-3676

Located in
the old Vaughn
Post Office Building
Vaughn, Washington 98394

Res. 884-3863

+ OAK CHEST OF DRAWERS
+ OLD SCHOOL DESK
+ UNIQUE SNOWMAN - COOKIE KEEPER
AND TEA POT COMBINATION
Pre WWII made in Germany
Signed
+ BENTWOOD ROCKER -
CANED BACK AND SEAT
from Spain

BANQUETS

WEDDINGS

PARTIES

BRITISH CATERERS

858-7054 - 265-3869

GOURMET DINNERS. EXEC. CHEF KEN ROBINSON FOOD FOR FUN

SHOREWOOD REAL ESTATE, INC.

WATERFRONT * FARMS * ACREAGE * INVESTMENTS
KEY CENTER BRANCH AT K. C. KORRAL 884-3303 TOLL FREE FROM TACOMA ZENITH 9059

Bay Lake

82' WATERFRONT, EVEN A SMALL DECK, WATER, POWER, AVAILABLE. \$12,800.



Vacation Cabin

AT PALMER LAKE. LARGE, LOVELY LOT, ONE ROOM CABIN. \$17,000.



Purdy Creek

OVER 2 ACRES ON PURDY CREEK. CLEARED BUILDING SITE. \$11,500.



View Homes

(1)
FROM LONGBRANCH SHORES. UNFINISHED 1 BEDROOM HOME. F. A., ELECTRIC FURNACE, DOUBLE WINDOWS, COMMUNITY BEACH. \$39,750.

(2)
FROM TIPPERARY NEAR LONGBRANCH. FIREPLACE, 2 BEDRMS., COVERED WRAP AROUND DECK, COMM. BEACH. \$47,500.

(3)
FROM TIPPERARY. 3 BDRMS, 1 3/4 BATHS, REC. RM. W/MET BAR, DEN. ALL APPLIANCES, DECK, PLUS A GUEST COTTAGE, COMM. BEACH. \$56,500.

(4)
FROM HERRON ISLAND. SECULDED 2 BDRM. RAMBLER, B.B. ELECTRIC HEAT, FIREPLACE, COMMUN. BEACH. \$38,000.

Building Sites

HERRON ISLAND - \$3200 UP.

2.85 ACRES IN LONGBRANCH AREA. \$6500.00

5 ACRES HARSTENE ISLAND. \$8500.00

2 LOTS IN GIG HARBOR. \$8500 EACH.



Call on any of our Sales People

LEE WILLIAMS
BRANCH MANAGER
RES. 858-2888

DALE HILL
RES. 858-9456

FRAN HARRISON
RES. 884-3114

JEAN GAZABAT
RES. 857-4667

JUANITA SAATHOFF
RES. 884-2635

BARRY HUNTER
RES. 884-2305



PENTINSULA GARDENING

by VALDA

These warm Indian Summer days have brought a burst of lush bloom to the geraniums, fuchsia and a few other late bloomers, but be prepared for a sudden end to it all. One light frost will blacken the dahlias and tomatoes but will be only a warning for the geraniums and fuchsia. Time to cut back and store for winter protection. Fuchsia, cut back all growth to 4-6 inches from the soil, geraniums, the same. Store in a cool, frost free place. Most people do not own a greenhouse, but there are many substitutes; a basement with little or no heat, a cold frame, a pit dug out two to three feet deep or into a side bank. The last two require a loose covering that will keep out the cold air but allow some ventilation. Loose boards and leaves, evergreen branches can serve, or a tight covering used only during excessively cold periods.

Keep both plants on the dry side - water about once a month - more will promote growth and induce rot. The plants require a real rest period.

All of those lush green branches can provide a lot of cuttings and produce new plants for you and your friends. Use 3-6 inches of the tip of each branch. Remove all but one or two tap leaves, cut or pinch them off with your fingernail, do not tear them off. With a razor blade or sharp knife make a straight cut just below the bottom leaf node, dip the end in roottone and place firmly in damp sharp sand. A 6 inch pail will hold 8 or 10 of them. Water gently to firm the sand around the stem. Cover with plastic and place in a warm spot, not in the sun. When roots form - 3-6 weeks - pot in soil and after another week use a sunny window till spring. Do not allow the sand or soil to dry completely but do not keep soggy. Geraniums especially like well drained soil and resent over-watering.

BRIDGE CLUB



Each year, every Civic Center member group is required to sponsor, or to assist with, a money making activity. This year our president, Henry Stock, decided we should furnish huckleberry pies to be sold at Reno Night. Henry picked the 80 pounds of berries, which Joyce Niemann cleaned, and the pies were made by various bridge club members, with donations by Nita Glass of the Grange and Ursula Van Slyke. Amy Dvorak, Margaret Olsen and I made 28 pies at the Center. Betty Beal donated all the super cream for whipping.

The club wants to thank Sally Cornman and her kitchen crew, plus everyone else, who helped make this a very successful enterprise which netted at least \$150 for our Center.

Henry said picking the berries reminded him when, as a youth, he would tie a wash tub around his neck and beat the bushes to gather 200 pounds of berries in one day. This was in the early 1920's, and was the "era of the huckleberry" on the peninsula. There were as many as four buyers in the Vaughn area alone, with each cleaning over two tons of berries every night. The buyer Henry remembers best operated his business in a large tent set up in the field across from the present post office where he had the usual blower with a gas engine.

There was always a long line of people waiting to have their berries cleaned, and the operation would often be going until midnight - quite a sight in the flickering light of the Coleman lanterns. Some people depended on the fall huckleberry harvest for their livelihood and they would pick far into the night with the use of the lanterns. Berries sold for 8¢ per pound, making it possible for a family to make \$2000 each season.

One Stock family berry picking outing is well remembered by the older Stock children, when Mother Stock put

the baby under a bush and everyone went their separate ways to pick. Finally, no one could remember where the baby was, and a frantic search was in progress when Dad Stock came by. His only comment was, "Don't worry, when he gets hungry, we'll hear where he is." The family, together, would gather as much as 1700 pounds of berries on these outings.

Eleanor Stock

30 YEARS ELECTED PUBLIC SERVICE

I have been active for years in the business world and in civic affairs. I have served as a school board director, 14 years Commissioner, Port of Tacoma, and now completing my third term as Pierce County Treasurer. I was born, raised and educated in Tacoma.

I have successfully sought changes to improve and modernize laws affecting County Treasurers, and continually active in seeking property tax relief for homeowners, especially senior citizens on fixed, low incomes.

I am especially proud of our daily investment production of interest earnings on public tax funds. Over \$8 million dollars were made this past year. Every day, including holidays and weekends, some \$25,000 of new money is earned for the Taxing Districts in Pierce County.

As I've done in the past, I'll continue to give conscientious service to all the people.

A warm THANK YOU for this long opportunity to serve and now, again, YOUR VOTE is appreciated.

MAURICE RAYMOND
Pierce County Treasurer



THE "KEY" TO FAST
DEPENDABLE SERVICE

WE SERVICE ALL MAKES

KEY
CENTER
ELECTRONICS

ANTENNAS INSTALLED:

... ETOP, COAX SYSTEMS
MULTIPLE DWELLING INSTALLATIONS

REWIRE NEW CONSTRUCTION
FOR TV & FM WITH COAX
\$35.00 FOR ONE OUTLET
PLUS \$10.00 FOR ADDITIONAL

HAPPY
ANNIVERSARY

ZENITH

884-3951

SALES - SERVICE

IT PAYS TO SHOP IN KEY CENTER



**CHARLIE'S
SAW & MOWER**

1 mile North of Key Center on Highway 302

Jacobson - Airens Dealer

Authorized Briggs & Stratton Service Center

Saw Filing Scissor Sharpening

New & Used Mowers

884-2960 Shop

Home 857-6286

SIDNEY GALLERY HOSTS AUTHORS

The Sidney Gallery, 202 Sidney Ave. will host a Holiday Coffee and Autograph party for local authors from 1 p.m. to 5 p.m., Sunday, November 12. An exciting variety of books will be displayed, including six collections of poetry, a Gothic novel, true life tales of courage and valor, and a delightfully illustrated fantasy for children.

Local authors interested in participating in the autograph party are asked to call committee chairman Dolores Nicolai, at 857-4329 before Nov. 8.

SHOPPING CENTER ONE YEAR OLD

Congratulations to K-C Corral as it celebrates its first anniversary. In recognition of this, several stores have a special event:

- 1) Country Health Food Store is offering for a drawing, a peanut butter machine and 1 gallon of local huckleberry honey. Sign up for this any time during November. The drawing will be held Nov. 31.
- 2) Lucy's Hanging Basket has a dried arrangement which will be given away in a drawing also on Nov. 31. Sign up now.
- 3) Buttons & Bows will also have a drawing, same day, for a 'pettable'. Sign up at the shop.
- 4) The Calico Kitchen features a luncheon special of soup or salad and a sandwich.
- 5) Step into Shorewood Realty for their free give-aways.
- 6) Dave Payne's T-V Shop carries a full line of Zenith T-Vs and also has a paperback book exchange.
- 7) Marcia's Styling Salon has a Lamaur Wave special - \$25.00, including haircut, shampoo, set.



**K-C CORRAL
KEY CENTER,
WA 98349**

Country Health Foods

*Products in Harmony with Nature
"We have everything, naturally"*

**COME REGISTER FOR THE
ANNIVERSARY DRAWING** 884-3977

**COMING SOON TO
KC CORRAL**



INTERIOR HOME CENTER

The Calico Kitchen

OPEN FOR LUNCH - 10:30 TO 4:30

HOMEMADE: SOUP - PIE - SANDWICHES
CINNAMON ROLLS

LEGAL WEIGHT WATCHERS DIET

K-C Corral 884-2029
KEY CENTER

Buttons & Bows

FALL FABRIC NOW IN

- *SPORTY SHIRT FLANNEL
- *PRINTS FOR YOUR SLEEPWEAR
- *BRIGHT CORDUROY

SPECIAL OF THE MONTH
Materials 10% off

Drawer of Patterns
1/2 PRICE



MARCIA'S STYLING SALON

ANNIVERSARY CLOTHING SALE

15% off all inventory
blouses, slacks, and
accessories

PERMANENT WAVE SPECIAL LAMAUR HEAT WAVE

Reg. 31⁰⁰ now 25⁰⁰
includes haircut
shampoo and
set

make app't. for
REDKEN® FREE Makeup Class








Holiday Fashions
arriving daily



WORRY ABOUT THE FLU THIS YEAR?

The health department has predictions for the return of one old type, A-Victoria and the onset of two new ones this coming winter season, B-Russian and Texas. The trivalent vaccine is available for adults over the age 26 at the clinic. Come in anytime it's convenient for you. The cost to you is on an open donation basis.

The clinic is open Mon.-Sat. except some Thurs., 9 to 5. The location is next to the Longbranch Community Church on the Highway to Longbranch. Watch for the clinic car parked on the highway below the church.

WORRY ABOUT THE COST OF YOUR CLINIC VISIT?

So does the Clinic Board of Directors and the Clinic Staff a recent Medicare audit revealed that the dollar cost to the Clinic averages \$28.38 per patient visit. This cost includes salaries of clinic personnel and fees to physicians who provide medical supervision, consultation and backup for clinical care.

By Federal regulation, uniform charges are to be made to all patients. Last month the average amount paid (not billed) per patient served was \$10.90. You may do your own subtraction.

Clinic charges are based on a unit value of \$7.00 with unit values based on fees paid by the Department of Social and Health Services for equivalent services. This unit

No Job Too Small!!

DITCH WITCH

*DITCHING

*EARTH MOVING

*HOME REMODELING



Richard Hale

884-2522

KEY CENTER

value, adopted by the Clinic Board of Directors, is now fourteen cents less than welfare allows for patient care. Some physicians try to keep their welfare services to 10% of their total care load because of the limitations imposed by regulations.

From a total of approximately 2700 services provided since January first less than 10% are billed to welfare by the Clinic. The Clinic does not limit its welfare client load. The other 90% of services provided are on a private, on an insurance, or a Medicare basis.

Now you know why we worry too, and also why we need your support in accepting the fees charged, in trying to pay promptly, and in searching for community money to help make up for those who are unable to pay. If you are unable to handle our fees, please tell us. Your neighbor is not the one to complain to or to ask for help.

LONGBRANCH MERCANTILE

OUR SPECIALTIES:

- + OPEN EVERY SUNDAY
- + EVERYDAY LOW PRICES
- + PENINSULAS' FINEST GROUND BEEF AND BACON
- + OPEN DAILY 9 A.M.-9 P.M. SUNDAY - 10 A.M.-7 P.M.
- + FRESH PRODUCE, MEATS, GROCERIES PICNIC TOYS AND TELEPHONE
- + GAS AND OIL

884-3721



CANDIDATE

RON HANNA
STATE REPRESENTATIVE

If re-elected, I will continue to work for:

1. Full school funding without reliance on special levies;
2. Further property tax cuts for senior citizens and low income persons;
3. Legislation which ensures local level public input into land use planning/growth policy;
4. enhancement of the Fisheries resource;
5. Funding for highway projects in the Gorst congestion area and the Highland Hill area;
6. reform of the current criminal sentencing system;
7. protection of individual's right to privacy against encroachment by computerized government and business;
8. legislation to stop leasing rip-offs;
9. improvement of the quality of state social service programs;
10. accomplishment of these goals within current level of taxation.

elect **DANA DYER**

STATE REPRESENTATIVE - REPUBLICAN
26TH DISTRICT POSITION 1

Pd. for by Citizens Committee to elect DANA DYER.

Chr. William Dickson, 739-1495

SAY MERRY CHRISTMAS

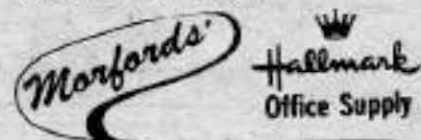
NEW HOURS

NOV. 1st

MON-FRI 9:00-9:00
SAT 9:00-7:00
SUN 11:00-5:00



WITH PERSONALIZED GIFTS
IMPRINTING, MONOGRAMMING:
STATIONERY, BOOKS,
COASTERS, NAPKINS &
CHRISTMAS CARDS



4828 POINT FOSDICK DR. N.W. GIG HARBOR, WA NEXT TO SAFEWAY 858-8369

CUB SCOUTS PACK 213

School Night for Scouting, held September 27, was very successful for Pack 213, registering about 19 new Cubs and Webelos. A new den is being formed, under the leadership of Jessica Haskell, at Evergreen School. Any boy, 8 to 10 years of age, not already signed up and still interested in Cub Scouts, may call Savann Shirley, 884-2283.

Den leaders, Diane Barnett and Sandra Johnson, attended an all-day training session in Gig Harbor on October 14. The program was for adults interested in Cub Scouting, and to sharpen their administrative skills. They will be attending another training session, held at the University of Puget Sound, on November 4.

All of the new boys have been busy working on their Bobcat award, which is the first step in Cub Scouting. The boys have also been learning about home and fire safety in their dens, culminating with a field trip to the fire station at Key Center.

The Webelos have been improving their athletic skills with the help of their Webelos leader, Dick Ghan. They have also been learning how to conduct a flag ceremony, which will be presented at the Pack meeting on Thursday night, October 26.

Sandra Johnson
Den Leader

CUB SCOUT CALENDAR

Monday	Tues.	Wed.	Thurs.
		11-1	
11-6	11-7	11-8	
11-13	11-14	11-15	
11-20	11-21	11-22	
11-27	11-28	11-29	11-30
		Pack Meeting 7 p.m.	

BOY SCOUT NEWS

Troop 213 sponsored by V.P. W. Post 4990 held its Fall Court of Honor, at The Vaughn Grade School.

Tim Alvar was chosen as our Senior Patrol Leader. Tim received his Pioneering Merit Badge.

Ken Alvar was selected as our Patrol leader. Ken received his First Class, Camping, and Family Living Skill Awards also.

Geno Armstrong has joined our Troop. Welcome Geno.

Cecil Beal was selected as our Assistant Patrol Leader. Cecil received his Second Class, Pioneering, Rowing, First Aid, Swimming, Sports, Merit Badge's, and Paul Bunyan Award.

Mark Downen was selected as our Assistant Senior Patrol Leader. Mark received his Pioneering and Small Boat Merit Badges, also, Conservation and Family Living Skill award.

Tom Lique was selected as our Troop Scribe. Tom received his Second Class, First Aid, & Pioneering Merit Badge.

John Partyka received his Tenderfoot and Pioneering Merit Badges.

Tim Shirley received his Tenderfoot, Pioneering, Rowing, and Swimming Merit Badges, Citizenship and First Aid Skill Awards.

Crawford Shirley is our Quarter Master. Crawford received his Cooking, Lifesaving, First Aid Merit Badges, also, Conservation, Family Living Skill Award, and First Class.

Tom Lique
Scribe

HOLIDAY PREPARATIONS

Now is the most active time of year for "Crafty" people, preparing for Christmas. In anticipation of this, Sherman's Arts & Crafts announces new Holiday hours. Starting November 1, they will be open every day from 11:00 a.m. to 5:30 p.m. They will also be open from 7:00 to 9:00 p.m. on Tuesday and Thursday evenings.

Bette Sherman informs us they have a wide variety of wreaths to make, decorations for trees, tables and walls made with both natural and man-made materials. Someone is always ready to assist you and you are welcome to stay and complete your project in their new spacious workroom.

Saturday mornings from 10:00 to 12:00 noon, Youth Craft Workshops will be held for young people between the ages of 9 and 12 years of age. As classes will be limited in size, please pre-register. Charges will vary depending on the days project.

Nov. 4

10:00 - 12:00 - Tree - \$2.50
Ornaments

Nov. 11

10:00 - 12:00 - Frosty - 3.50
The Snowman
Centerpiece

Nov. 18

10:00 - 12:00 - Mirror - 2.50
Picture Ornaments

(must bring 4 sm. pictures)

Nov. 25

10:00 - 12:00 - Corn Husk - 6.00
Wreaths

Bette not only sells craft materials but uses them herself and teaches several skills. One of her favorites is making doll houses and furniture on her miniature electric saw. She also does beautiful straw weaving, beadwork and macrame. Because of its popularity she now has calico in for wreaths and stockings. All will culminate in gifts with a purpose for the holidays.

Belfair Cafe
and Glo Room

BELFAIR, WASHINGTON
275-6226

OPEN 7 DAYS A WEEK

NEW HOURS

CAFE:

SUN. - THURS., 6A.M. - 10P.M.
FRI. - SAT., 6A.M. - 3A.M.

GLO ROOM:

11 A.M. - 2 A.M. - DAILY

SPECIAL MUSIC EACH WEEKEND

CATERING, BENEFITS, &
SENIOR CITIZEN DISCOUNT



9'S
FAIR HARBOR MARINA
MONTHLY AND DAILY MOORAGE
GAS OPEN 7 DAYS A WEEK OIL
BAIT-TACKLE-GROCERIES-HOT SANDWICHES
P. O. Box A Phone 426-4028
Grapeview, WA. Res. 275-6417
CAPT. KENNY DECK HANDS:
1ST MATE PHYLLIS BRUCE, BONNIE & KIM

CROW'S NEST
OPEN DAILY EXCEPT
SATURDAY AND MONDAY
On Hwy 302 - 2 miles past
Rocky Bay Nursing Home
(toward Shelton)
884-2690 ANTIQUES 275-3247
COLLECTIBLES +++++ GIFTS



W. H. OPIE & COMPANY

SINCE 1888

GIG HARBOR

CELEBRATING NINETY YEARS OF REAL ESTATE SERVICE

QUIETLY EFFECTIVE

WARMLY PROFESSIONAL

KNOWN BY ITS PEOPLE
REALTORS

- STEWART BLAND - DARLENE BERGSTROM - JODI EMBLEN - HERB ERICKSON
- RON ERICKSON - DEBRA GREEN - JIM HERMANSON - IVY MYRE -
- PAT PAYNE - EARL RUPPERT - JOYCE TOVEY - RICHARD ZANDER.
- GEORGE MCGILLIARD, BRANCH MANAGER
- REIDER A. HANSON, DESIGNATED BROKER.

FULL SERVICE REALTORS

COMMERCIAL - RESIDENTIAL - PROPERTY MANAGEMENT

OPIE BEST BUYS

OLYMPIC MOUNTAIN VIEW

From this neat three bedroom rambler on 3/4 acres just 2.5 miles from Purdy. New lawn. Paneling in living room. Home shows loving care. \$43,000. Call Jodi Emblen 857-4065 ofc. or eves. 857-6598. MLS 38026

TRESS, TREES

2.5 acres of them. Tall and thick. Build anywhere you like on this one. Power to property. Water available. Good location. \$15,000. Call Jodi Emblen 857-4065 ofc. or eves. 857-6598. MLS 35941

PRIVACY

Is the word for this cute two bedroom home on seven acres near Lakebay. Family size kitchen. Fully insulated. Franklin fireplace. \$42,950. Call Jodi Emblen, 857-4065 ofc. or eves. 857-6598. MLS 35349

NEW VIEW HOME

Three bedrooms. 1,875 s/f tri-level with a view of the sound. Located in Gig Harbor. Luxury kitchen. Insulated windows. Two heatilator fireplaces. \$82,500. Call Jodi Emblen 857-4065 ofc. or eves. 857-6598. MLS 38027

"Come Buy Today"

OPIE HAS BUYERS

- FOR Highway 302 Frontage, North of Key Center.
- FOR 4,000 s/f Waterfront House with parking (moorage) for 115' yacht.
- FOR Waterfront Rambler with parking (pasture) for 4 horses.
- FOR 5 Acres with Creek Frontage.
- FOR Rocky Bay Waterfront Building Site.
- FOR Level Acreage: Five to Fifty.
- FOR Older House on 15 or more Acres.

"Come Sell Today"

OPIE INTRODUCES

We are pleased to introduce George McGilliard, Manager of our Peninsulas Office. George is a Peninsula resident and active in community affairs. He and his wife Kathy reside on Fox Island. He is a native of Ohio, a graduate of the University of Michigan, holds a Master's Degree, a G.R.I. designation, and is a third generation Realtor. Asked for his thoughts, Mr. McGilliard responded: "I want to know personally everyone of these many people who have chosen to do business through Opie. I intend to be on the scene and involved in leading the way to the accomplishment of our client's goal."

OPIE'S THOUGHT FOR THE MONTH

Life's SPOOKIEST problems become happy and harmless with an Opie Professional on your team: HAPPY HALLOWE'EN.



W. H. OPIE COMPANY

11625 STATE HIGHWAY 302 - GIG HARBOR
TACOMA TOLL FREE 383-4681

857-4065

857-488

SURVIVAL TIPS FOR PARENTS

The October 12 parents meeting on "Survival Tips for Parents" was very well received. It was decided that Lester Lucht, who presented the topic, should return each month to continue to assist us in providing effective guidance and discipline for our children.

The next meeting will be on Thursday, November 9, in the Long-branch Community Church at 1:30 p.m. Bring your curiosity and questions. Coffee, tea and babysitting will be provided at the Clinic next door.

MEETING NOTICES

Vaughn Garden Club - Nov. 16
Meet at Civic Center at 10 a.m. to pool rides to Tacoma. Will visit the conservatory at Wright Park - lunch at restaurant later.

Upper Sound Grange - Nov. 3
Election and pot-luck at 6:30 in the Gold Room - Civic Center. Meeting follows at 8:00.

Dr. Penrose Orthopedic Guild
Nov. 9 Luncheon at the home of Mrs. Coleman Anderson. Co-hostesses Mrs. Robert Kelly and Mrs. Robert Crandall. Will make plans for Christmas Auction.

Senior Citizen Open House
Nov. 8, 4:00 to 6:30 p.m. at the Civic Center. Co-sponsored by the Pierce County Dept. of Community Services and the Civic Center Board.

LAST CHANCE

The last local charter bus trip to see the King Tut exhibit will leave on Friday, November 3 from Walt's Store at Key Center, 7 a.m. SHARP!

After the two hour tour they will go to the Salmon House in Seattle for a no-host lunch. On the way home there will be a one hour tour of the Tacoma Museum and the bus will arrive back at Key Center at 3:30 p.m.



For sensible,
responsible
accountable
government.

Thor Tollefson, Dr. Charles Bogue and Jim Hill,
Co-chairmen/Senate/26th District/Republican.
P. O. Box 1979
Gig Harbor, WA 98335

**Neighbors
Talking to
Neighbors**

**The Sound
Telephone Co.**

A subsidiary of Telephone Utilities, Inc.

**Key Peninsula
Lutheran Church**

REV. ED WAGNER
CIVIC CENTER - VAUGHN

SUNDAY SCHOOL: 9:30 A.M.
WORSHIP SERVICE: 10:30 A.M.

The British Caterer is really Ken Robinson, an experienced chef trained in England. He has special menus for receptions, family parties, office parties and banquets. See his ad on Page 8.

dump truck
backhoe
grader
blade

**GRADER SERVICES
884-2271**

PHIL RADCLIFFE
route 1, box 96c
lakebay, wa 98349

top soil
road gravel
rockery rock
crushed rock

**PENINSULA
RENTALS**

Located 1 mile north of Key Center on S.R. 302

Open Mon. thru Fri. 7:30-6:00
Sat. & Sun. 9-5

1830 Loader...Free p/u & Delivery
30+4 Backhoe...Free p/u & Delivery
Rototillers
Brush Cutters
Airless sprayers
Burn Fans
Weed Eaters
Chainsaws

Trencher
3000W Generator
2500W Generator
Power trowels
Cement Mixer
Lawn Mowers

We don't know what you need until you ask!

884-2960

CUSTOM SHAKE SPLITTING
Top Price for Shake Blocks

Bob or Bill
CR 5-3432 Home
CR 5-3194 Mill

GOOD CLEAN SHAKES
BY BILL LAUNDREY
HELPAIR

WEAVING, SPINNING,
& NEEDLECRAFT

CLASSES STARTING NOW!

Knitting Yarns
and Supplies

275-3868
Call
for Details

On Highway 3

**OLYMPIC-WEST
DRILLING CO.**

858-7226
GIG HARBOR
State Licensed

SPECIALIZING
IN SINGLE FAMILY AND
COMMUNITY WATER WELLS

FEATURING
THE LATEST IN MODERN
DRILLING EQUIPMENT

Cable Drill
Air Rotary
FREE ESTIMATES

"JAWS-OF-LIFE"

The Rotary Club Christmas Fair is raising funds to purchase a Jaws-of Life machine to cut through car wrecks to rescue passengers in accidents. There will be a demonstration of the machine at the Key Center Fire Station on Saturday, November 4 at 11:00.

CPR CLASS - FIRE DIST. 16

The Key Peninsula Fire Department will be conducting CPR classes every other Thursday, starting November 9, at 7:30 p.m. at the Key Center station. Anyone desiring to take the course should register no later than Tuesday of the week they want to attend. Register by calling 884-2222 or 857-2291.

Glen Grosse, located in the Peacock Professional Bldg., has been a photographer for twenty years. He has a student special now, as seen in his ad on Page 7. He will take photographs in his studio or in your home.



SUPPORT THE PENINSULA YOUTH PROGRAM 1978 FUND RAISING DRIVE

Tax Deductible Contributions can be mailed to any branch of PENINSULA STATE BANK

Bahá'u'lláh

Everyone Invited

THE GLORY OF GOD
WHAT IS A BAHÁ'Í FIRESIDE?
IT IS A SHORT TALK FOLLOWED BY AN INFORMAL DISCUSSION OF THE

Bahá'í Faith

For more information... please call 858-9550
P.O. Box 852 Gig Harbor, Wa. 98335

JEFF CHARBONEAU

Road Building Landscaping Excavating
Land Clearing Foundations

884-2971 Rt. 1, Box 142-A VAUGHN, WA 98394

Key Peninsula Services

Buy - Sell - Swap

Key Center Trading Post

(206) 884-2220

7 MILES WEST OF PURDY ON HIGHWAY 302

Rt. 4, Box 4627 DON & LIANA FEGLEY
GIG HARBOR, WA. 98335

DG's Farmers Insurance Group

Myers Professional Building
7108 Pioneer Way, Suite No. 2
Gig Harbor, WA 98335

Bus Phone 858-8961
Res Phone 858-8671



DEE GORSUCH

10 - 5 Mon. thru Fri.
NO SAT.
Sat. & Eve. by Appt.

LAND CLEARING
ROAD CONSTRUCTION
BANKRUN - GRAVEL
FILL DIRT HAULED



Active Construction

P.O. Box 191 - Gig Harbor, WA 98335
Bus. 858-2380 - Eves. 884-2884

WALT'S FINE FOODS

HOMETOWN SERVICE
KEY CENTER



OPEN DAILY 9:00 A.M. - 8:00 P.M. SUNDAYS ONLY 11:00 - 6:00

FRESH PRODUCE - MEATS
ALL YOUR GROCERY NEEDS 884-3325

Rippon Electric Co.

RESIDENTIAL WIRING

Stanley G. Rippon
13414 Woodside Dr. NW
Gig Harbor, WA 98335

857-2730

Pastries Continental!

NEW LOCATION - OCTOBER 6
DOWNTOWN GIG HARBOR...
ACROSS FROM THRIFTWAY
Monday-Saturday 8 - 6

PASTRIES TO GO! WEDDING CAKES!
SPECIAL PARTIES!

Come relax with Alfie
858-7424



D&M

BUSINESS MACHINES

TYPEWRITERS - ADDING MACHINES - CALCULATORS
CASH REGISTERS - COPY MACHINES

SALES REPRESENTATIVE
JIM EWING

474-8497
2520 SO. TACOMA WAY
TACOMA, WASH. 98409

SAKURA NURSERY

Key Center, WA.

- + FALL BULBS
- + PEAT MOSS
- + FALL FERTILIZERS
- + BONSAI SUPPLIES

OPEN - TUES. - SAT.: 10 A.M. - 5 P.M.

KEY WESTERN BUILDING CENTER & HARDWARE

Inventory Special

- PAINT
- LUMBER
- PANELING 15% Off all Paneling
- FISHING TACKLE
- HARDWARE

COMPLETE LINE OF BUILDING MATERIALS FOR THE CONTRACTOR AND HOME OWNER

KEY CENTER 884-3321

No Better Dining ANYWHERE

CALL: 857-2241

Pearl's by the sea

Mon.-Thur. - 7:30 a.m. - 12:00 p.m.
Fri.-Sat. - 7:30 a.m. - 2:00 a.m.
Sunday - 10:00 a.m. - 12:00 p.m.

On Bremerton highway at Purdy

Johnson Bulldozing We Dig It!



BULKHEADS
EXCAVATING

SPECIALIZING IN BACKHOE SERVICE
WITH A SMILE

884-2362 884-2607

Key Peninsula Services



The Fruit Stand

LOCATED 2 1/2 MILES WEST OF
PURDY ON HIGHWAY 302

Longbranch Automotive Center

AUTO REPAIR
+ Domestic
+ Foreign

JERRY HANSEN
Longbranch, WA.
South of the Church
(206) 884-3272

John E. Miller

Walter E. Paulsen

Peninsula Accounting Associates
5209 Pt. Foadick Rd., Suite 203
P.O. Box 676
Gig Harbor, WA. 98335

206-858-8852 or 206-858-8168

HOME FEED & GROCERY
9-7 weekdays / 11-6 Sundays
884-2321

Featuring "Choice Beef"
resh Produce
ishers Feed
riendly Service



BEE PROUD APIARY

HONEY

Huckleberry
Cranberry
Fireweed

Clover
Alfalfa
Valley

857-4427

1 blk. off Hwy. 12118 Cramer Rd. N.W.
(Camp Seymour, YMCA Rd.)



884-2539

WOOD BULLDOZING
LAND CLEARING, ROADS, EXCAVATION
GRAVEL

RHYS WOOD

RT. 1, BOX 145A
VAUGHN, WA. 98394

THE PLACE TO GO IN
BEAUTIFUL DOWNTOWN KEY CENTER
IS THE
KEY CENTER TAVERN

LAKEBAY CHEVRON

at the Home Bridge

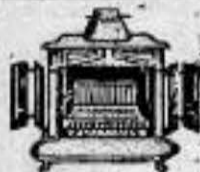


8 a. m. - 6 p. m. 884-3828

Belfair

Fireplace

Shop Inc.



FIREPLACES AND ACCESSORIES

Custom masonry and installation

LEONARD HOHMANN

BUSINESS 275-6165
RESIDENCE 275-6473

TRI-CHEM Liquid Embroidery

GOOD SALES - NEED INSTRUCTORS

CONTACT DAISY BERRISFORD

HERRON ISLAND OR CALL
839-7272

DUANE G. FLEMING

Cascade
Insurance
Underwriters
Inc.

2200 6TH AVENUE • TACOMA, WASHINGTON 98403

AC 206/627-3133

Residence 884-3340

Bo-Mac Gravel Co.

RT. 2 - BOX 260-C
PORT ORCHARD, WA. 98369



OPEN SATURDAY

R. F. "Mac" McCloskey
PARTNER

876-2003
857-4185

ROCKY BAY

Hi again from Rocky Bay Health Care Facility.

We just finished a busy and exciting summer, and we are looking forward to a fun filled fall and winter.

We at Rocky Bay H.C.F. would like to give a big thanks to Camp Seymour's swimming crew. They welcomed our residents to the pool every Saturday and spent time with them. Thanks again - they really enjoyed it.

We have a big need for a couch and chair to put in our cabin. We have a lot of activities going on and we surely could use them. Also we need buttons for sewing projects.

Please stop by and visit us. We would enjoy meeting and visiting with you.

Madeline Fergersen

NO JOB TOO BIG!! NO JOB TOO SMALL!!
DON'T CUSS-CALL US!!

HOLLAND
PUMP COMPANY



*Residential & Commercial
Water Pumping Systems

*Complete Pump Repair Service

*Irrigation Systems

*Goulds Pumps

CALL: Jim Holland
265-3776
Gig Harbor

For Drilling Call:

OLYMPIC WEST DRILLING CO.
858-7226



SERVICE
(formerly Len's Arco)

857-4983


9401 State Road 302

HOURS: Sun. 8 a.m. to 8 p.m.
Fri. & Sat. 6 a.m. to 9 p.m.
Mon. - Thurs. 6 a.m. to 8 p.m.

Harv Ennis,
owner

Pete Barcher,
shop manager

CELLAR ARTS and CRAFTS



Classes • Gifts • Supplies
Toile and Decorative Painting
Decoupage
Macrame

Hrs: 11:00 AM-5:00 PM
Sun. 1:00-4:00 PM
Phone 856-9391

7804 Pioneer Way P.O. Box 244 A Gig Harbor, WA 98335

HOME THRIFT SHOP
11-4 - Fri. & Sat.

Always super bargains
Stretch your dollars



9th St. & LB Hwy. Home, WA.

L.E. Jopp Builders


- ★ Carpenter Work
- ★ Foundations
- ★ Bulkheads
- ★ Concrete Work etc.

884-3841

LICENSED & BONDED CALL COLLECT

Randy's Bulldozing

Lot Clearing
Roads Punched
General Dozing




RANDY NIMRICK Rt. 4, Box 4783-1
1-857-2625 Gig Harbor, WA 98335
857-8703

ANDERSON WELL DRILLING

PHONE:
(206) 275-3040

BOX 813 BELFAIR, WA 98528



Licensed - Bonded
"Probably the Best"

John Brewer (206) 857-2253

BREWER ELECTRIC CO., INC. Residential-Commercial

14519 Peacock Hill Avenue, N.W.
P. O. Box 228 Burley, WA. 98322

LUCILE'S BARBER SHOP

Hours: Tuesday thru Saturday
9 a.m. to 6 p.m.

1 short mile south of
Rocky Bay Health Care Center
on Hwy. 302 going to Shelton

884-3732

CLEARING EXCAVATING BACK FILL


D & V BULLDOZING
11672 WICKS LAKE ROAD S.W.
PORT ORCHARD, WASHINGTON 98366
876-4691

LICENSED & BONDED DURAN BURTON

Sant's Accounting Service

- Bookkeeping
- Tax work - all phases

Rt. 1 Box 149 VIRGINIA SANT
Vaughn, WA. 98394 884-3532



Electrical Contractors

Residential
Commercial
Electric Heat

LICENSED & BONDED 884-2511
VAUGHN, WA.

Minterbrook Oyster Company

Open 7 Days
9 a.m. to 4 p.m.

Retail - Wholesale

JERRY YORK

York Insurance Agency
Auto • Life • Fire • Health & Accident

Post Office Box 364 Office 888-8880
Gig Harbor, Washington 98335 Res. 867-8887

Alcoholics Anonymous

MEETS AT LONGBRANCH IMPROVEMENT CLUB EVERY FRIDAY AT 8:00 P.M., WITH THE 3RD FRIDAY AN OPEN MEETING.

Al-Anon
MEETS AT LONGBRANCH CLINIC
GROUPS MEET EVERY FRIDAY - 8 P.M.

for AA - LEE - 884-3424
RUBY - 884-2583

for Al-Anon
LEE - 884-3424
BETTY - 857-2041

Portable Saw Mill

ANDERSEN & SONS SAWYERS

Gary W. Anderson Chris Greg Matt Eric

884-2912

NO JOB TOO BIG OR TOO SMALL

GAS, OIL, GROCERIES, MEATS

COLLINS' SERVICE & GROCERY

45 years serving the Peninsula

PHONE 857-4311

THE MARINA AT GLEN COVE
NOW OPEN DAILY

- * BOAT STALLS
- * GAS DOCK
- * LAUNCHING RAMP

884-2329





WANT ADS
10c
A WORD
CALL
884-3739

COMPLETE LINE OF
SHAKLEE'S HOME PRODUCTS
BETTY BEAL 884-2598

FOUND: BROWN LEATHER
SHOULDER BAG WITH NO
FRINGE. 884-2529

NEED TO SHARE A RIDE TO
FIRCREST - WHITTIER SCHOOL
Call 884-2846

WE BUY CEDAR BOUGHS
8¢ a pound. Opportunity
to earn extra Christmas
money. Students, house-
wives, anyone looking
for a job. Good quality
boughs, 18 to 20 inches
long. This offer ends
December 1st. Call
RODMAN EVERGREEN COMPANY
884-2417

RIDING LESSONS - ENGLISH
OR WESTERN - GROUP OR
PRIVATE. Call 884-3253

FOR SALE: OIL HEATER,
STOVE PIPE, 100 GALLON
BARREL. \$50.00
Call 857-2633

COWGIRL POWER! LEARN
TO RIDE WHILE THE KIDS
ARE IN SCHOOL.
Call 884-3253

ROCKY BAY HEALTH CARE FACILITY
WOULD LIKE DONATIONS OF: Broken
watches with bands in tact,
buttons, odds & ends of lumber
for craft projects, plant starts
and cider jugs.

FOR RENT: 3 BEDROOM HOUSE -
LAKE HOLIDAY. Carport, green-
house, workshop. Swim, golf,
tennis. \$300 a month. 884-2929

FOR SALE: 2 NEW DODGE VAN SEATS.
\$75.00. Call 884-3797 weekends.

AL'S MEATS

858-8421

DON PACK, OWNER & OPERATOR
Home: 858-3808
MONDAY & AFTER 5 P.M.

U.S.D.A CHOICE LOCKER BEEF
WILD GAME PROCESSING
CUSTOM CUTTING AND WRAPPING
MOBILE SLAUGHTERING

9606 STATE RD. 16 N.W.
GIG HARBOR, WA. 98335

PURDY TREATMENT
CENTER EXIT

.....continued from Page 3

Since desegregation is not a problem for the great majority of the other school districts in the state, the law would stand as written for other districts.

As it is written the Initiative would drastically limit local control of attendance options and place this control in the hands of the state. At the present time it is part of the local school board's total responsibility to insure the best education for all students within budget limits. Under this proposed law the Superintendent of Public Instruction would be forced to oversee transportation patterns throughout the state.... one more bureaucracy to pay for. The Initiative would restrict curriculum, staffing and budget decisions by forbidding re-organization of the grade structure of the schools, as well as pairing, merging and clustering. Especially since Peninsula is growing so rapidly our School Board is constantly involved in such decisions in order to provide the best education possible for each child. A State agency in Olympia charged with overseeing miles traveled certainly cannot be as intimately concerned with educational quality as our local representatives.

The Initiative does mention exceptions such as overcrowding, unsafe conditions or lack of physical facilities; however, these exceptions are not defined as they should be in a good law and would result in more legislation and litigation.

The proponents of the Initiative claim that it would result in saving tax dollars. This is untrue because any loss of Federal funds to Seattle School district would mean that the rest of us in the

State would have to pick up the loss in State taxes. This current year, Peninsula School District will receive more than \$326,000 in federal revenue, so you can see what a significant part this is of each district's budget. If Seattle should become involved in lawsuits regarding segregation of its schools, all the taxpayers of the State will be forced to pay the cost of the litigation.

The proponents claim that it will preserve local neighborhood schools. Peninsula School District is currently involved in building a network of neighborhood schools (as per Task Force 76) but as new families move in there is not always a neighborhood school available. Local officials must decide how to best provide facilities for each child.

The proponents claim that passage of the Initiative would be exercising our local and constitutional right to choose. As citizens of the United States we do not have a right to choose to support segregated schools with public funds. If schools could be desegregated without busing, the Seattle school officials would certainly do it, but they must obey the law. In the meantime, let Seattle take care of its own problems and let the rest of the State go about the business of providing the best possible education for each child in the state at the most reasonable cost without any more interference than is absolutely necessary.

Natalie M. Hoey
Schools Chairman
League of Women Voters
Tacoma/Pierce County



CHACO MOBILE HOMES

15503 CEDAR PARK RD., S.E.
N. on Highway 16, Right on 154th St.
(Past Purdy) to Olympic View Mobile Manor



"PERSONAL TOUCH SERVICING"
AWNINGS - SKIRTING
COMPLETE ACCESSORIES

CAMELOT TRADE - SELL CORINTHIAN
*FHA *VA *CONVENTIONAL FINANCING AVAILABLE



OUR LOW
OVERHEAD
SAVES
PRICE & COMPARE

PLEASE CALL
857-4471
857-4421
OLALLA



THE PENINSULA STATE BANK

884-2345

member FDIC



1978

NOVEMBER



HOURS
Monday thru Friday 10 a.m. to 3 p.m.
Saturday 10 a.m. to noon



SUNDAY MONDAY TUESDAY WEDNESDAY THURSDAY FRIDAY SATURDAY

Thanksqiving

Calendar grid with dates 5-30 and activities. Includes Thanksgiving Day on Nov 23 and a historical note on Nov 25.



IN THE YEAR 1668, WITH THE APPOINTMENT OF NOVEMBER 25th AS THANKSGIVING DAY, THESE WORDS WERE WRITTEN INTO THE PLYMOUTH COLONY RECORDS: "It has pleased God in some comfortable measure to bless us in the fruits of the earth."