

INSIDE



The Family
Room
Page 2



Growing Up
In Longbranch
Page 4



TOPS
News
Page 5



Here Comes
Santa
Pages 10 & 11



Did You Know?
Page 15

KOMO TV's Brook Stanford To Keynote Citizen Of The Year

by Hugh McMillan

Key Peninsula Lions Club president Mike Coffin, notes that, "we've not received a single nomination for citizen of the year to date. I guess that's because people think there's plenty of time. There isn't. Nominations must be submitted on or before January 17, 1997 ... less than two, busy, holiday-crowded months from now."

KOMO TV's Brook Stanford, who will keynote the event, is no stranger to our peninsula. He was keynote speaker at the 1993 Gig Harbor Eagles' sponsored Citizens Against Crime awards banquet. And in 1995, he featured on his popular Home Town Heroes program for a week a member of that latter organization. Stanford, who has been KOMO's "People Helper" reporter since 1987, has received an Emmy for specialty reporting, and Angel Award, Broadcaster of the Year, and has been honored by the Washington State Nurses Association. His efforts have raised \$3.5 million in goods and funds for people in need.

Asked to keynote this year's Citizens of the Year dinner, Stanford readily agreed.

The 13th annual Key Peninsula Lions Club sponsored Citizen of the Year banquet, will be held Saturday, March 1, 1997 at the Key Peninsula Civic Center in Vaughn. It begins at 6:30 p.m. with a social hour, and 7:00 p.m. dinner, to be followed by Stanford's program and awards presentations. Tickets are \$8.50 single, or \$30.00 for a group of four. There will be a no host bar.

You are encouraged to nominate the candidate of your choice for recognition as a Citizen of the Year by providing a brief letter describing the person(s) and your reasons for your choice. Mail to Citizens of the Year, KP Lions, P.O. Box 63, Vaughn, WA 98394.

Anyone living, working, or owning property on the Key Peninsula is eligible to be a candidate for recognition of voluntary work or contributions of benefit to the KP community. Members of the Lions Club are not eligible.



KOMO TV's Brook Stanford

President's Message:

"Best Wishes To All Over The Holidays"

As the year draws to a close, I'd like to wish all the supporters of the Civic Center, Happy Holidays. It's been a great year here at the Civic Center. We've met many new people and seen new programs appear. The year ahead looks to be bright again for the Center in 1997. We are looking forward to the start of our H.U.D. project. This will rebuild the bathrooms, add on to gym storage and resurface the gym ceiling as well as re-light it.

The Civic Center is our building, it does not receive any tax dollar

support. I invite anyone who wishes to donate any amount of time, money or materials to do so. We'd very much appreciate it. Our budget is just over \$70,000.00 a year and it takes a lot to keep this place up.

Thank you again to all who have helped with the many projects and programs through the past year. We'll be looking forward to working with you in 1997.

Respectfully yours,
Tim Kezele
President K.P.C.C.A.

Let Your Holiday Gifts Bring Peace Of Mind

The Tacoma-Pierce County American Red Cross is just the place to do your holiday shopping! Instead of giving a gift that will end up in a closet collecting dust, give a gift that will end up in the closet waiting to save a life. The Red Cross has a variety of emergency kits that do just that.

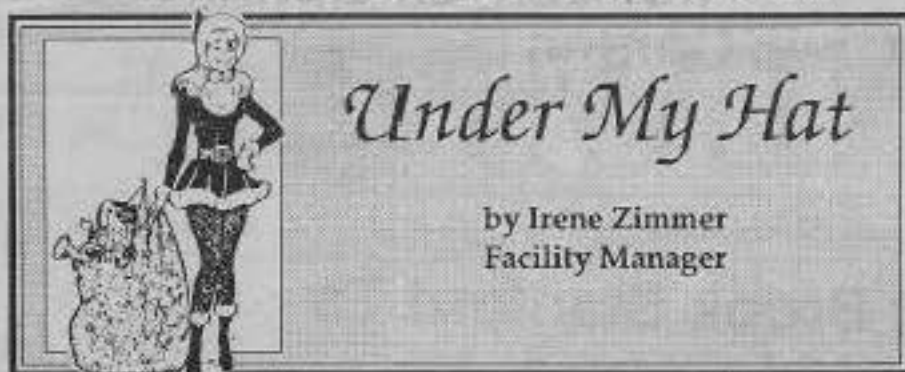
Disaster Kits include:

Four Person Family Emergency Kit, which contains essentials for four people to survive for three days.

Two person Emergency Kit, which contains essentials for two people to survive for three days.

One Person Emergency Kit, which contains essentials for one person to survive for three days.

Included in the packs are food, aqua blox, firstaid pack, particle masks, tarp, pry bar and games.



Under My Hat

by Irene Zimmer
Facility Manager

Merry Christmas to all of you from all of us here at the Civic Center. As the end of 1996 approaches, I want to take this opportunity to thank all of you who volunteered their time and effort to making the Center run smoothly.

A few personal thank you's to some really special "helpers". To Ginger Donnelly who is there whenever you call. She's a good cook, too! To Mike Ryan of the Children's Home Society for giving us a helping hand with those "muscle jobs" we sometimes have. To Sarah Brewer, our skate assistant for her cheerful outlook, her dependability, and her willingness to help wherever she's needed. To Tim Kezele for just being there. And, to Sylvia Haase, Virginia Liebergesell and Mary Hill for their proofreading and typing. Lastly, to Hugh McMillan whose pictures we sometimes don't have room for! All of you are truly appreciated!

Lots of things going on here at the Center. The tree on the front lawn is all lit up, there is a VFW "Sharing Tree" in the Whitmore Room and our really big tree in the gym, so the

Civic Center is all prepared for the Holidays!

Don't forget the last board meeting and potluck dinner on December 12th. You are all invited to bring a dish and to join us for the last meeting of the year. Some of the things up for discussion are rate changes, new officers, budget changes and projections for 1997. The potluck starts at 6:30 pm with the meeting starting at 7:30 pm.

The Children's Home Society now has, among their many services, a clothing bank. All sizes of clothes are available and they are open every Tuesday. Donations are appreciated, too.

The Mission has returned with their free Sunday friendship dinners. Everyone is welcome and dinner is at 5:00 pm. We really missed them while they were gone.

In Closing, please remember that giving and sharing can go on all year long. Keep the Holiday spirit in your heart the whole year and make yourself feel good.

Thanks again for your support!
See you next month.

Tacoma Little League

So Who's Really Running For President?

Think you know who's running for President? No, it's not Bill Clinton, not Bob Dole, not Ross Perot. It's John P. Wintergreen!

Who? Yes, it's understandable if that's your reaction. Nobody has heard of John P. Wintergreen, even though he's the People for A Return To Yesteryear (P.A.R.T.Y.) candidate.

Aside from name recognition, John P. Wintergreen has a BIG problem. He's a bachelor and his

advisors have decided he needs to find a wife to complete the voter-appeal profile. His appearances will bring the spouse search live to Tacoma! It's better than Wheel of Fortune, Jeopardy, the Washington State Lottery drawing. On-stage at Tacoma Little Theatre will be all the trappings of presidential politics: speeches, bunting, banners, balloons, baby-kissing and more.

The real story? It's Tacoma Little Theatre's presentation of the witty Gershwin-Kaufman musical, *Of Thee I Sing*, which runs through December 7. Lampooning the presidential campaign left, right and in the middle, it's a Pulitzer-Prize-winning romp through great songs and hilarious, right-on jokes that are just as pertinent now as when the show was written in 1932. Audiences will savor the thin line between satire and reality, and get a welcome respite from real politics.

Tickets are \$12/\$10. Reserved seats are available by calling 206-272-ACTU/272-2281.

Key Peninsula Civic Center Executive Committee

Tim Kezele, Pres. 884-4538
Sylvia Haase, Vice Pres. 884-3603
Michael Coffin, Vice Pres. 857-4285
Stephanie Zampini, Treas. 884-9821
Donna Bosch, Secretary 884-3320
Dave Freeman, Past Pres. 884-2313



The Family Room

The Family Resource Center

What we most often hear at this season, whether we celebrate Christmas, Hanukkah, Kwanzaa or the Winter Solstice, is the importance of the spirit of giving. We are in a fortunate position at the Family Resource Center because we can participate in the spirit of giving and receiving not just during the holiday season, but each day throughout the year. We want to thank the family members of our Center and describe how the spirit of giving works both ways at the Center.

Families participate in the Family Resource Center for various reasons. For some the contact begins with a phone call requesting information about community resources. These requests may concern basic needs like food, shelter, clothing and transportation. We can make referrals and provide the necessary resources to meet these needs as soon as possible. Other families call with more general requests, seeking information about how to connect with other families in the community, where to find after-school or summer activities for their children, or how to cope with the general stresses of parenting and life in general. Whatever the requests, families are invited to become members of the Family Resource Center and to join in experiencing the support and company of others.

The wonderful thing for us at the

Family Resource Center is to see how participating families in turn benefit others to create a marvelous "snowball" effect of giving-and-receiving. Many of the families who join our Center now volunteer to teach classes, provide free child care, and to contribute toys, clothing, food and other services. With each family who joins, the Center has more to offer.

We at the Family Resource Center would like to take this opportunity to tell our families "thank you!" We could not do what we do without your participation. You share the spirit of giving with us all year long, not just during the holiday season!

We invite all families in the Key Peninsula to add to our "snowball" and join us at the Family Resource Center.

Support Group

I am interested in starting a support group for the caregiver of Dementia and Alzheimers people. Anyone interested in this, please give me a call or leave a message on my machine at 884-2987. I will be taking calls until the 15th of December to see how much need for this service there is in our area. Thank you for your help.

Peggy Gablehouse

KEY PENINSULA NEWS

To Subscribe, Please Write, Call or Fax:

Key Peninsula News
P. O. Box 3, Vaughn, WA 98394
(206) 884-4699
• Fax (206) 884-4053

Key Peninsula News is published monthly by Key Peninsula Civic Center Association, d/b/a Key Peninsula News here in our offices in the basement of the old Vaughn High School building in Vaughn, Washington. Copyright 1995-1996 with all rights reserved. Reproduction or use, without permission, of editorial or graphic content in any manner is prohibited. Office is located in the Civic Center in Vaughn. Annual subscriptions (12 issues) are available for \$10.00. Single copies are free at the newspaper office and at various distribution points located on the Key Peninsula. Over 14,000 people live in this distribution area. Mailed single copies are \$2.00 prepaid. Deadline for articles and ads is the 20th of each month.

OUR GRATEFUL THANKS TO ALL WHO CONTRIBUTE TO THE KEY PENINSULA NEWS!

EDITOR: Irene Zimmer
AD SALES: Jan Sparks
COMPOSITION: Combined Effort
PRODUCTION: Aiko Tramil
ACCOUNTS: Patti Olsen
DISTRIBUTION: K.P.C.C.A.
STAFF PHOTOGRAPHER:
Hugh McMillan

PROOF READERS: Sylvia Haase,
Virginia Liebergesell, Mary Hill

NEWSPAPER BOARD:
Dave Freeman, Sylvia Haase, Donna Bosch

The opinions expressed herein are the opinions of the writers and do not necessarily reflect the views of the publishers or staff. Submissions are used on a space-available basis and may be edited if used. No religious or political material.

Peninsula School District And The Civic Center

by Lori Deacon

Peninsula School District will be following the direction of the community members who participated in the local Future Search Conference earlier this year.

On December 5th there will be an Education Forum sponsored by Peninsula School District. The Forum will consist of three parts. First - an all day session will be held at the Key Peninsula Civic Center. A diverse group of both Gig Harbor

and Key Peninsula community members, including parents, District staff, business and community leaders will be led by Dr. Bill Daggett.

The Civic Center is the best facility in the District for this type of function and total access will allow first time visitors to see how much this community treasure has to offer. Since many participants will be from Gig Harbor, it is likely to generate future use by this exposure.

This type of community partnership is important to District officials and the community.

This portion of the Forum will focus on the primary objectives outlined in the District's 'Blueprint for Progress 1996-2000'. Essential academic learning standards will be established and benchmarked to standards aligned with the adult roles, skills, knowledge and behaviors determined in part by the community.

Daggett is known internationally for the leadership role he has assumed in educational reform. In August 1991, he was appointed Director of International Center for Leadership in Education. The Center provides consultant services and research on employment and educational issues to education and business organizations in North America, Europe and Asia.

The second part of the Forum will take place that evening at 7:00 p.m. at the Peninsula High School auditorium. This session is open to the public and everyone concerned about education in our schools is encouraged to attend. Daggett will discuss the changing needs of society and education along with the results of the session earlier that day. There will be an opportunity for everyone to contribute their thoughts and concerns.

The final portion of the session will take place in the ongoing implementation of restructured programs. The Gig Harbor/Key Peninsula Action Coalition will be working closely with the School District to monitor feedback and results. For more information call 857-3594.

KPCCA Board Meeting Minutes

The meeting was called to order at 7:30 p.m. by president, Tim Kezele. It was msc to approve the minutes of the October meeting as published. Chuck West spoke about a skater area that is planned at Volunteer Park, as asked the board for a reduction in rental fees for a dance on December 28 to raise money to buy items needed for this area. It was msc to charge a reduced rental rate for this dance. Wes Pruitt, chairman of the Gig Harbor/Key Peninsula Action Coalition, spoke to the board about the group's purpose. The board will hold off on a decision to join this group until after the first of the year.

BUDGET COMMITTEE: New fee schedules will be put for approval at the December meeting. The new fees will be effective January 1, 1997.

MANAGER'S REPORT: The furnace has been installed and is ready to hook up. This will be just in time for winter. It was decided we will not hire someone to strip and re wax the Whitmore Room at this time. A potluck and tree decorating will be November 29 at 6:00 p.m.

VFW: The group will have a "Giving Tree" for gifts of local VFW facilities. We were reminded again, we need to have our own person who will be in charge of the fireworks.

NEWSPAPER: We made a profit again this month! Letters will be sent to advertisers 60 and 90 days overdue.

TOPS: The group would like to build a showcase of their trophies to display in their meeting room. They will be sending reps to the State convention May 1, 2, and 3rd.

SKATING: Lila reported she has ten new parent volunteers to help with the 130 to 150 kids every week. Purdy Pictures donates videos for the children not skating to watch.

BAZAAR: The Christmas Bazaar will be November 30. Shari has about half of her tables reserved, but they are going fast.

INDOOR PARK: Attendance is growing, and seems to be very popular with parents.

HISTORICAL SOCIETY: Starting December 1, the museum will be open by appointment only until March 1. The society has coffee mugs, maps, cookbooks, and genealogical charts for sale.

The Peninsula School District will be using the Center for an all day meeting December 5. The Seniors will not be meeting at the Center that day, but have been offered alternatives. The new HUD grant will be going out to bid as soon as all the plans are finished. We are applying for another grant from HUD that will be for paint, siding, new flooring and carpeting.

OFFICERS: The Nominating committee presented: President, Tim Kezele; 1st Vice-president, Mike Coffin; 2nd Vice-president, Sylvia Haase; Treasurer, Stephanie Zampini; Secretary, Donna Bosch; and At Large, Loyd Miller and Kathy Hale.

The December meeting will be a potluck starting at 6:30 p.m., December 12. All groups are welcome to attend.

The meeting adjourned at 9:40 p.m.

Respectfully submitted,
Donna Bosch, secretary

Key Peninsula News Subscription Form

P.O. Box 3 Vaughn, WA 98394

YES, I would like to subscribe to the Key Peninsula News at \$10.00 per year.

Name: _____

Address: _____

City: _____ Zip: _____

Obituaries



Raymond "Ray" Lee Jackman

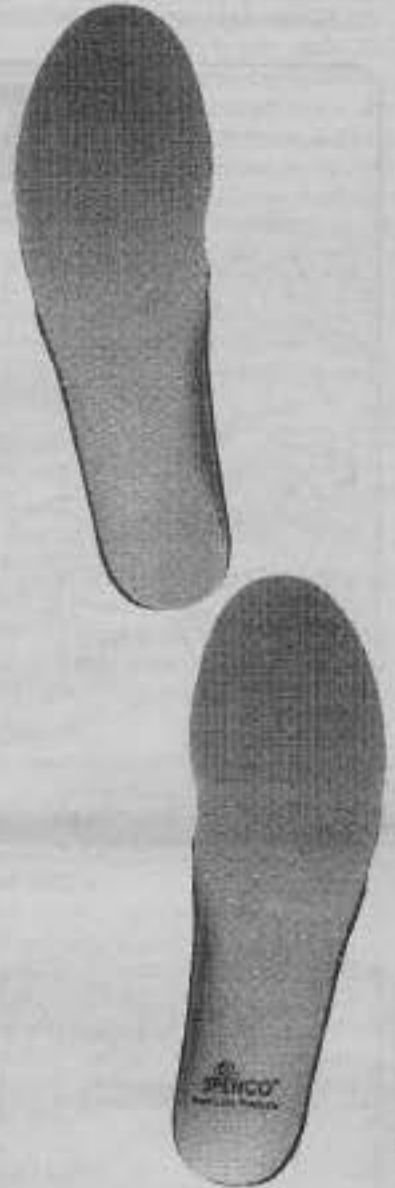
Ray Lee Jackman, 50, a resident of the Longbranch Peninsula area all of his life, died October 30, 1996. He was born in Bremerton on December 31, 1945. Ray was a logger and a brush picker, he enjoyed nature and working in the woods. His many friends will miss him. Family members include his son, Gary Jackman and his sister, Diane Jackman, of Lakebay; 2 nephews and 3 nieces.

An inurnment service was held Sunday, November 3 at Vaughn Bay Cemetery. Arrangements by Haven of Rest.

Advertise

in Key Peninsula NEWS
884-4699

SHOPPING AT OLYMPIC CAN BE GOOD FOR YOUR SOLE.



At Olympic, we like to think we're one step ahead of our competition when it comes to foot-care products. We know how important good foot health is to everyone's well-being, so we carry a huge selection of arch supports, comfort innersoles, deodorizing products, corn removal aids and much more. You'll also find that our experienced staff are extra friendly and helpful in solving your problem. So stop sole searching and "hotfoot" it over to the Harbor's #1 pharmacy.



Olympic Pharmacy
HEALTHCARE SERVICES

Just what the doctor ordered.

Pt. Fosdick Medical Center
4700 Pt. Fosdick Dr. NW • 855-3941
All Major Credit Cards Accepted
M-F 9-7 Sat 9-5

Growing Up In Longbranch

by Aileen Fraehlich
Key Peninsula Historical Museum

Fishing a lazy creek, swimming all afternoon with friends, sleeping on the beach at night or in a barn full of fresh mown hay. Sunday afternoon watching baseball at the old ball park, whooping and rooting our team on. Riding my old world bike I had purchased from Budge Dadisman for a ten dollar bill, feel-

ing the wind in my face. Just laying in a field of clover and watching the clouds roll by, dreaming dreams of all the great and wonderful things I would do in my life. Going to the movies in Gig Harbor or Port Orchard on a show card and fifty cents for a carload of family and friends. Playing pinochle, enjoying lunch and good conversation after the game was completed. Lying on the beach or out in the field counting

the stars and trying to find the Big Dipper or some other one. Those were a few of the fun things we did and of course with fun came responsibilities.

Our chores consisted of feeding and caring for the farm animals, helping harvest crops and putting hay in the barn. My brother and I had to hoe the gardens. If we finished by a certain time, we were allowed to go swimming or to a friend's house for the rest of the afternoon. Our rewards for jobs properly done was never money, but some special privilege. I believe in many ways those rewards had so much more value than money because they were very special and always assured us of our parents' love.

I believe one of the best features of growing up in a small community like Longbranch was the deep love and friendships we had. I never had just one set of parents, but everyone in the neighborhood was concerned for my safety and welfare. I was welcome and safe to visit anywhere, which gave me a wonderful

feeling of security.

I asked my cousin, Marg Rickert Radnich, what she liked best about growing up in Longbranch. Her reply was that there was always some way to make money. She and I were quite the entrepreneurs. She would get the ideas while cleaning eggs and since I had a big mouth, I would execute the plan. We did everything from picking peaches, raspberries and other crops to selling magazines or Clover Leaf Salve. Our bikes or our feet were our main modes of transportation.

Shirley Rickert Olson just laughed and replied her main interest in life was boys.

Helen Stolz Fravel and I were, and still are, special friends. She lived then, and still does, in the Taylor Bay area. She and I used to walk each other back and forth through the woods, talking of our dreams or our boy friends. Ah, yes, those were the lazy, crazy days and I feel like a millionaire because I was able to be so privileged to have grown up in Longbranch with my extended family.

KEY DATES

BUSINESS / PROFESSIONAL GROUPS

KP Business Assoc.	Dec. 6 - 7:30 am	Home Port Rest.
	Dec. 20 - NOON	Horseshoe Lk. Rest.
Fire Fighters Assoc.	Dec. 24 - 7:00 pm	K.C. Fire Station

CIVIC ORGANIZATIONS

Cooliettes	Dec. 19 - 7:30 pm	KPCC / Whitmore Rm.
KPCCA Board	Dec. 12 - 7:30 pm	Civic Center
KPCS Board	Dec. 12 - 7:30 pm	Comm. House/Home
KPHC Board	Dec. 5 - 7:30 pm	Health Center
	This will be the only meeting for Nov. & Dec.	
KP Lions	1st & 3rd Wed. - 7:00 pm	KPCC / Whitmore Rm.
VFW & Auxiliary	Dec. 9 & 23 - 7:00 pm	KPCC/VFW Room

COMMUNITY SERVICES

Adult Literacy classes	Call for appt.	851-6552/ Gig Harbor
Angel Guild	Dec. 23 - 10:00 am	Brones/KC Library
CHILDREN'S HOME SOCIETY	Family Resource Center	Mon. thru Fri.
	9 am to 4:30 pm	Key Peninsula Civic Center, Lower level. Call 894-5433
Food Bank	Tues-Fri 10 am - 3:00 pm	Comm House/Home
FREE Branch	Sundays 2-3 pm	Comm. House/Home
Hot Lunch for Seniors	Wednesdays - NOON	Comm. House/Home
Also food & clothing assistance.	for more info, call 884-4440, 884-4514, 857-4780	
Immunizations	Thurs. 9 am-2 pm	GH Chamber/Comm.
KP Baptist Church AWANA Club	Wed. 6:45 pm to 8:00 pm	KPCCA
Overeaters Anonymous	Wednesday at 7:30 pm	St. Nichols Church
Seniors Exercise Program	Tues.&Thurs. 8:30-9:30 am	Comm. House/Home
WIC (Womens, Infants & Children)	Tues. 8:15-4:00pm	KPCC/Wm.Rm.
	Call 884-3835, Tuesdays for an appointment.	

PUBLIC MEETINGS

KP Fire Comm.	Dec. 11 - 7:30 pm	KC Fire Station
	Dec. 23 - 4:00 pm	KC Fire Station
KP Park & Rec.	Dec. 9 - 7:00 pm	Brones/KC library

SELF-HELP GROUPS

AA - Mon. & Fri.	8:00pm	Sat/Sun. 6:00 am	KP Comm. Services
Caregivers Support	Dec. 12 - 7:00 pm		Library/ Brones Rm
Grandparent Group	Dec. 7 - 1:00 - 3:00 p.m.		Brones/KC library
Contact Norma at 884-2205 for more information.			
TOPS - Tuesday Mornings	Weight-in 9:00 am	Meeting 9:30 am	VFW Rm. at
TOPS - Tuesday - Nights	Weight-in 6:15	Meeting at 7:00 pm	KP Civic Center

SOCIAL & HOBBY GROUPS

Bayshore Garden Club	Dec. 20 - 12:00 Noon	Improvement Hall
K.P. Hist. Society	Dec. 10 - 7:00 pm	- 884-4538 for info.
Longbranch Imp. Club	Dec. 18 - 7:00 pm	Longbranch Imp. Club
Peninsula Neighbors	Dec. 10 - 10:00 am	Improvement Hall
LB Fuchsia Society	Dec. 5 - 7:00 pm	Library/Brones Room
Ruth Circle Meet	Dec. 16 - 10:00 am	Bible Study, Lunch and
	Meeting, 12:00 Noon	Longbranch Church
Senior Society Lunch	Thursday - NOON	KPCC/ Wm.Rm

NOTE: IF YOU WOULD LIKE YOUR ORGANIZATION LISTED HERE, PLEASE MAIL INFORMATION BY THE 20th OF EACH MONTH TO:
DATES: - KP NEWS, P.O. BOX 3, VAUGHN, WA 98394

Thanks For Your Support Of The Health Fair And Ciderfest '96

On behalf of the Key Peninsula Business Association, I wish to especially thank those persons who donated blood at this year's Health Fair and Ciderfest. Gary Gunn reports that 31 pints of blood were collected. That is more than was expected and it came at a time when there was a shortage. Thanks to the Fire District for starting our day with a great breakfast. Thanks to Ross Bischoff for providing us with plenty of healthy pasteurized cider, and to Tracy Manning at the Key Center Tavern for contributing most of her parking area to the cause. Thank you to all the kids who came to sing and dance and enjoy the hay rides and face painting. A special thanks to the Pierce County Sheriff's Office Cadets who controlled traffic and kept us safe all day. Finally, thanks for coming together and sharing you support for the Key Peninsula and each other. For those interested, there are plenty of merchandise items left over and we have cut the prices about in half. The merchandise is at Centruy 21, Key Center. Aprons are \$8.50, Steins \$5.00, T-Shirts \$9.00, and there are also a few sweatshirts. These are great gifts with a special Peninsula logo. Finally, give us some feedback. Should we do live music, especially for kids again next year, or something else? Let a KPBA member know how you feel.
John Biggs,
Ciderfest Chairman

AARP 55 Alive/Mature Driving

We will be conducting AARP 55/Alive Defensive Driving classes regularly on Key Peninsula starting in February. The classes will be held in the new fire station in Home. In the meantime, we have a monthly class scheduled the third Wednesday and following Thursday from 8:30 to 12:30 at one of the fire stations near Purdy. For class information, schedules and reservations, please call 857-4815.

Gig Harbor: Dec. 11 & 12, both days, 8:30 to 12:30 both days. Pierce County Fire Hall 5-8 Swede Hill off Schmel. Call 851-6480 for required reservations.

Gig Harbor: Jan 15 & 16, both days 8:30 to 12:30 both days. Pierce County Fire Hall 5-8 Swede Hill off Schmel. Call 851-6480 for required reservations.

Volunteers Needed

The Retired and Senior Volunteer Program is looking for volunteers for meal site assistance at Wright Park. Opportunities are available for kitchen preparation help, food servers, and greeters. For more information, contact Mildred Smith at (206) 597-7312.

The Retired and Senior Volunteer Program is looking for seniors to fill positions at the YWCA's Y's Buys. Stocking shelves, cash register clerk, and inventory assistance positions are available. For further information, contact Mildred Smith at (206) 597-7312.

TOPS News

by Frankie Johnson

October best losers were Donald Chidester #1, Susan Davidson was in 2nd place. Louise Harrison has lost 50 lbs so far and is over halfway to her goal. Several members have reached their 25 lbs off and received special numerals for their charm bracelets. They are: Jayne McCourt, Kandy Van Laanen, Arleen Lanning, and Cindy Middleton.

Kandy has been helping our awards chairman, Jayne in making special awards. She made a darling spider and web for Halloween weight loss. We give awards the first Tuesday, every month to honor each member who achieved some success.

A big event this month was that our state queen, Laural Johnson, was on national TV on the Carol and Marilyn talk show. Laural was flown to Hollywood, stayed at the Hollywood Roosevelt Hotel, and was driven in a stretch limo. She had a really wonderful experience as they did a complete make over, including hair cut and coloring. We were all so excited to see her on TV.

Our meetings have been lots of fun since Arleen and Judy have become leaders. Arleen has a wild sense of humor and keeps us laughing. Judy has been a real inspiration by her invitations to walk with her

on Volksmarch, which are usually 10K. TOPS has a new walking contest that lasts a year with a challenge to walk 100, 250 or 500 miles, with honors at each level. Cindy Middleton and Frankie Johnson have done two walks with Judy. Judy has done eight Volksmarches.

We will have a table at the Craft Show to be held at the Civic Center on November 30th. Our Christmas party will be on December 17, guests are welcome.

You are invited to come visit TOPS any time, Tuesdays at 9:00 a.m. or 7:00 p.m. Call 884-4102 for more information.



*Merry Christmas and
Happy New Year
From All Of Us
At The Key Peninsula
Civic Center And The
Key Peninsula News*



In The Library

RURAL DELIVERY, a contemporary Bluegrass band based in Port Orchard, will perform Wednesday, December 11, 7:00 p.m. at the Key Center Library. Its five members pride themselves in playing the finest in acoustic music. "Rural Delivery" takes audiences from Traditional to Newgrass, and from Country to Blues. They also feature rich original compositions from several of the members. The performers will include Terrence Enyeart, Dale Williams, Jon Parry, Steve Thomas, and Scott Allred. "R.D. Breakdown," their first album release, has been enthusiastically received by all.

This free program is sponsored by the Friends of the Key Center Library.

Tax Tips

by R. Marvin Keizur CTP

by R. Marvin Keizur, CTP

Use lifetime gifts to pass assets to next generations, rather than leave everything through your will.

The annual gift tax exclusion (\$10,000 per recipient, \$20,000 for married couples) lets you pass assets free of gift or estate tax. Future appreciation in an assets value will escape gift/estate tax. Income produced by gifts won't be taxed to you - gifts avoid probate. IRS audits less than 10% of gift tax returns. You can also pass along cash in the same amount to your heirs, which is not taxable to them and is not deductible by you.

Vaughn Bay Garden Club

Vaughn Bay Garden Club members will hold their annual Christmas noon potluck at the home of Joyce Neimann on December 18. Anyone interested in joining the group can call 884-5403.

Advertise

in Key Peninsula NEWS

884-4699



Need help with your taxes? We can do it!

- Individual & Corporate Tax Returns
- Monthly Bookkeeping Services
- Payroll
- Financial Statements
- Business Consulting
- Notary Public
- Computers & Add Ons Available

Let Our 30 Years Experience Work For You

Myr-Mar Accounting Service, Inc.

Marv Keizur CTP 884-3566 or 857-5357
POB 568 Wauna WA 98395
Office at Union 76 Complex
Above Country Gardens
Most CREDIT CARDS Accepted



Mon-Thurs-6am-5pm
Fri-6am-5:30pm
Sat-7:30am-5pm
Sun - 8am - 5pm

Next to Walt's in Key Center



COLONY REAL ESTATE

BIGHT AND CHEERY beginning for a family which loves country interiors. 3 BR, 2 BA mfg. home, 2 car garage, wonderful partly fenced lot in lake community. Super price. \$84,900.

SOUTHERN EXPOSURE, medium to low bank waterfront, and 2.25 acres of privacy. A 2BR bungalow w/new roof, carpet & hardwood floors. Best buy for recreation or full time living. Price \$239,000.

\$99,500 for 1,536 sq. ft., 2bedrooms, 2 bath, detached 2-car garage, landscaped, nice large back yard, partial marine view, PLUS over 1,000 ft. of community beach, boat ramp and party area. Seller will help in buyers financing.

Century 21 Colony Real Estate • 884-3304

In a brave new world,
you need a bank that isn't
afraid of change.

Seniors surfing the waves.

Generation X surfing the Internet.

Welcome to the future. And while

we're making

introductions,

meet the new KeyBank. We're here

to help you manage your changing

financial needs. Conveniently

Innovatively. Dependably. Call us at

1-800-539-2668. And ride the new

wave in banking. Member FDIC

<http://www.keybank.com>



Key. For a new America.™

Attorney General Urges Caution In Charitable Giving

If someone is asking you for a charitable contribution this holiday season, be sure to find out where your money is going before you open up your pocketbook.

That's the word from Washington Secretary of State Ralph Munro and state Attorney General Christine Gregoire, who noted that some charities get only a fraction of the money you donate, with the rest going to commercial fundraisers hired to solicit contributions.

To illustrate their point, Munro and Gregoire released their annual "Bah Humbug" list of commercial fundraisers operating in the state which allocate the least percentage of dollars raised to their client charities.

Not one of the commercial fundraisers on the list provided more than 20 percent of the money they raised to the charitable causes they supported. In two instances, commercial fundraisers forwarded less than a dime of every dollar collected to their client charities, with the rest going to fundraising expenses and profit.

In releasing the list, Munro and Gregoire stressed that they do not want to discourage people from giving to charitable causes.

"To the contrary," said Munro, "we hope Washingtonians will

continue to help those in need. At the same time, we want consumers to know exactly how their money will be spent before they make a contribution."

Key questions consumers need to ask, and verify the answers with the Secretary of State before deciding whether to make a contribution, include:

- Is the charity or fundraiser registered with the state of Washington?
- What is the name, address and

telephone number of the organization asking for the donation?

- Exactly how will the donation be used?

- What percentage of the contribution will actually be spent on the charitable purpose of the organization?

It is also recommended that consumers refrain from giving money to a fundraiser or charity without first receiving written materials regarding the charitable cause. In addition, consumers should never

give their credit card number to a telephone solicitor.

To check up on a commercial fundraiser or charitable organization, consumers should call the Secretary of State's Charities Information Hotline at 1-800-332-4483 (360-753-1485 for the hearing impaired). To file a complaint, call the Attorney General's Office at 1-800-551-4636 (1-800-276-9883 for the hearing impaired), or visit the AGO Internet Home Page at <http://www.wa.gov/ago>.

Key Peninsula Food Bank Donation

Key Peninsula Boy Scouts from Troop 220 and Cub Scouts from Pack 220 collected more than 3,000 food items for distribution to the Key Peninsula food bank on November 16. The Scouts spent their three-day Veterans' Day weekend delivering more than 1,000 collection bags to the residents of Key Peninsula. On the following Saturday, the Scouts collected the bags and delivered them to the Food Bank. "This is the best response we have received from the community in years. Without the community generosity, this would not have been possible", said Lethaniel Ray, the Pack Committee Chairman for the Cub Scout Pack. "The Scouts of

Troop 220 and Pack 220 thank the citizens of Key Peninsula for their support."

The food drive is sponsored by the Boy Scouts of America and is conducted annually during the second and third weeks of November across the country. All food collected goes directly to local food banks and stays within the community.

Anyone interested in the Boy Scouts or Cub Scouts on the Key Peninsula should contact either Bill Macaras at 884-3133 or Lethaniel Ray at 857-7667. The Boy Scouts meet on Mondays, 6:30 p.m. at the Key Peninsula Middle School.

James P. Gillis Has Enlisted In The United States Army

Staff Sergeant Jeffery D. Bergstrom, of the U.S. Army Recruiting Station in Bellevue, Washington, says that Gillis' test score and enlistment in the Infantry (Airborne Ranger) qualify him for up to \$30,000 under the Army College Fund program. He recently left for basic training at Fort Benning, Georgia.

He is a 1991 graduate of Inglesmoore High School in Bothell, Washington and is the son of Khio R. Gillis and stepson of Gregory Wiedower of Gig Harbor, Washington.



It's Christmas Magic at Sunnycrest

And we have all the trimmings to make your Christmas Magic



LIVING CHRISTMAS TREES

Noble, Pine & Spruce

Will add beauty to the landscape year after year.

EVERGREEN WREATHS

Ship the fragrance of the Northwest to family & friends

\$26.95 plus tax

Gift Wrapped POINSETTIAS

What better way to say "Merry Christmas" Beautiful Holiday Designs Centerpieces - Door Swags - Bouquets

Holiday Ribbon
Fragrant Candles
Gift Wrap & Cards

Collectible Christmas Ornaments
Santa's • Angels
(Over 1,000)

PAPER WHITE • ORCHIDS

IVY TOPIARYS
ALL DECORATED FOR SPECIAL GIFT GIVING

ALL BANKCARDS WELCOMED



Located in Key Center 206-884-3937

OPEN EVERYDAY



Emergency Shelter Talks

The Key Peninsula Community Services played host Monday, November 18, to representatives; Norma Iverson and Sandy McFarlane of the Family Resource Center, Ron and Jan Coen of Fish Food Bank, Gig Harbor, Becky Macaras of the KP Lions, Art Gilmore of Citizens Against Crime, Kathy Schmidt of the KP Firefighters Association, and Earle Saxer, John Van De Brooke and Hugh McMillan of KPCS at Community House, Home, to discuss needs and feasibility involved in creating an emergency shelter on the peninsula, to assist burn-out victims and others. Each representative will seek views and advice of their respective organizations and report

back at a meeting in mid-January 1997.

Discussions with the Lakewood Area Shelter Association, Helping Hand House, Puyallup, the Martin Luther King Exumenical Center, and the Catholic Community Services, both of Tacoma, will draw on their long experience. Additionally, contact will be made with peninsula area churches.

Pierce County has offered a \$10,000 HUD grant to fund a feasibility study in support of the proposal following these preliminary surveys.

The group asks for public input. Mail your ideal to KPCS, P.O. Box 392, Lakebay, WA 98349, on or before January 10, 1997.

Fastpitch Workshop Features Olympic Gold Medal Coach

What does it take to be a fastpitch champion? Find out at an informative workshop conducted by United States Olympic Gold Medal coach Ralph Weekly, known throughout fastpitch circles as our country's top hitting coach. The workshop is geared for female athletes ages 9-18, but parents and coaches are also welcome to attend. The workshop will be held at Sprinker Recreation Center on Sunday, Dec. 15, 1-5PM. Cost is \$15/person if registered by Dec. 1; \$20/person after Dec. 1.

Coach Weekly will discuss hitting, defense and the mental aspect of the game. He will also share a video of the Gold Medal women's fastpitch team from the 1996 Summer Olympic Games.

Call Sprinker at 537-2600 for a registration form.

The Performance Circle Theater Auditions

The Performance Circle theater will audition for: *"The Secret Garden"* adapted by Tim Kelly from the novel by Frances Hodgson Burnett.

The audition will be held on: Monday, December 16 at 7:30 p.m. and Tuesday, December 17th at 7:30 p.m. at the indoor theater located at 6615 38th Avenue NW, Gig Harbor.

The cast is made up of both female and male, with a wide range of ages. A prepared song required.

February production dates. Directed by K. Lynette McGilliars.



KPCS Foodbank's Lucky Saturday

Story & photo by Hugh McMillan

A member of the Board of Directors of the Key Peninsula Community Services Foodbank was introduced to Mr. Al Rogers of Super-Valu, formerly West Coast Grocery while attending a party at the home of Larry & Sheila Melsness of Home. They hit it off well. So well that on Saturday, September 7th,

Mr. Rogers delivered into the recently completed freezer at the foodbank about 1100 pounds of frozen pizza, chicken, french fries, baloney, and hotdogs from Super-Valu's surplus food supply. Mr. Rogers said he would endeavor to make further contributions in the future.

*Merry Christmas and
Happy New Year!*

Quality Photofinishing



- Photo Greeting Cards!
- 1 Hour Photofinishing
- Portrait Studio
- Film & Camera Accessories
- Passport Photos while you wait
- Same Day Reprints & Enlargements
- Black & White in-house processing (M-F)
- Video Duplication & Transfer

Call Us For All Your Photofinishing Needs
851-3582
Pioneer Plaza 6876 Kimball Dr.

LAND OWNERS

We'll help you manage your lands.
Professional Forestry Consultants in business since 1970

Cruising, Timber Sales, Marketing, Appraisals, Administration, Short- and Long-Term Management Plans, Logging and Road Construction, Land Rehabilitation, Environmental Management.

FORESTRY CONSULTANTS

**Washington
Timberland
Management, Inc.**

East 6885
Highway 106
P.O. Box 130
Union, WA 98592
1-800-775-0795

CERTIFICATE ACCOUNT

ELEVEN MONTHS

6.00%

APY*

Now is the time to take advantage of this great rate...

For a limited time, Telco Community CU is offering this great rate on any funds transferred from another financial institution. This applies to new certificates opened for \$10,000 or more.

If you live or work in most communities in Pierce County or are employed by one of our select employee groups, you are eligible to join.

By being a member you can take advantage of the many financial benefits we have been offering since 1940. Call 383-2016, now for more details.

*Annual Percentage Yield. \$10,000 minimum deposit. Substantial penalty for early withdrawal. Penalty amount up to \$500,000 by the NCUA.


Main Office
Tacoma
1531 Broadway Plaza

Tribune Bus. Park
Tacoma
2316 S. State Street

Gig Harbor
4521 Pt. Fosdick Drive N.W.

Key Center
8920 Key Peninsula Hwy. N.

Puyallup
117 14th Ave. S.E.



Telco Community
CREDIT UNION
383-2016 OR 1-800-562-8130

REJOICE IN CHURCH AT CHRISTMAS



Celebrate the Season!

at

Lakebay Community Church

An Evangelical Covenant Church

11 Cornwall Road • P. O. Box 130 • Lakebay, WA 98349 • (206) 884-3899

Service of Thanksgiving

Sunday Dec. 1st at 10:30 a.m.

Join us Thanksgiving weekend as we return thanks to God for the blessings of the year with joyful song. It feels so right to give thanks!

Annual Christmas Banquet

Friday, Dec. 13th

Begins at 6:30 with hors d'oeuvres. Dinner and program begin at 7:00pm. Our annual Christmas banquet this year will be a dinner theater with Judy Unschoel, an actress from Oregon from the Tapestry Theatre Company, performing "Spread Your Garment Over Me". This will be a joyful, celebrative and thought provoking way to begin your Christmas observances. Bring a friend! A GREAT evening of friendship, holiday cheer, entertainment and a prime rib dinner for only \$10/person! Reservations required. RSVP at 884-3899.

Annual Christmas Play

Wednesday, Dec. 4th at 6:30 pm & Sunday, Dec. 8th at 10:30 am

Our Christmas play this year is "The Little Christmas Lamb" and will be performed twice, once on Wednesday evening and again on Sunday morning. Christmas isn't the same without a Christmas play! Join us on Wednesday evening December 4th or Sunday morning December 8th for this special tradition. Holiday refreshments served afterward.

Annual Christmas Eve Candle Light Service

Tuesday, December 24th at 7:00 p.m.

An inspiring evening service filled with special music, joyful carols, dramatic Bible story, some brief devotional thoughts and the sweet strains of Silent Night sung by the congregation among the soft glow of candles. One of the most beautiful, worshipful events of the year!

New Year's Eve Party

Tuesday, December 31st from 8:00 p.m. to ?

A "Come when you can, leave when you must" fun-filled evening with games, movies, great snacks and surprises, a festive atmosphere and -- for those who feel -- a devotional thought and a time of Praise and prayer to usher in the New Year. This is a great place to gather your whole family for a fun and safe New Year's celebration. Good Times!! Activities for all ages. White Elephant gift exchange for those who would like to participate.

Please join us -- we'll be watching for you! Have a blessed Holiday Season this year! And please remember...

Jesus is the Reason for the Season!

*It is a trustworthy statement, deserving full acceptance, that Christ Jesus came into the world to save sinners...
-1 Timothy 1:15 (NIV)*



*May the peace of the Christmas
Season dwell within your hearts and
linger long therein. To you
and all your loved ones, greetings!*



Christmas Celebrations

The Music of Christmas by candlelight will be held at Miracle Ranch at 4:00 p.m. on December 15, featuring the combined choirs of Grace and Mission Woods Presbyterian Churches. A light meal will follow the concert.

On Christmas Eve, Grace Church will hold a worship service at 6:30 p.m. at Miracle Ranch. All are welcome to attend.

VAUGHN COMMUNITY CHURCH

cordially invites you and your family to join us for the holidays:

Christmas Happenings:

Discover the true joy of Christmas in the heartwarming play

"The Christmas Angel"

performing:

Sat. Dec. 21st 6:00 pm and Sun. Dec. 22nd at 6:00 pm

Christmas Eve Candlelight Service Dec. 24th at 6:00 pm

Beginning January: Family Night Out

Word ofLife Bible Club Sundays 6:00 pm

"Fluffy" and "Rover" Want You To Come Over!

If you are a pet owner, or just an animal lover in general, the Tacoma-Pierce County American Red Cross has just the thing for you - Pet First Aid! This is a course that teaches you how to identify possible problems and illnesses, what to do until you can get your pet to the veterinarian, and, in addition, you will learn to administer CPR to your pet. It is important to know how to care for your pet properly, especially with winter weather coming up.

The next class will be held Dec. 15, 1-4PM at the Humane Society for Tacoma and Pierce County, 2608 Center St., Tacoma, WA. Pre-registration and pre-payment are required. Spaces are limited. Sign up today by calling the American Red Cross at 206-597-7303.

First Annual Walk-Thru Fantasy Lights Set

Don't miss the first annual "Sneak Preview" Walk-Thru Fantasy Lights at Spanaway Park!

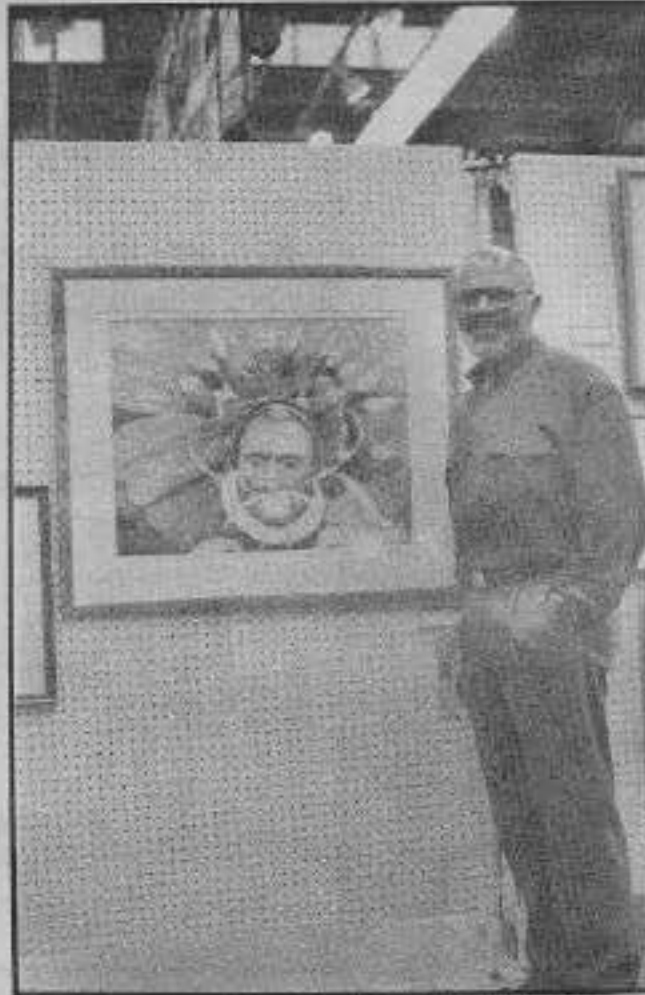
Fantasy Lights is the largest animated holiday drive-thru display of lights in Western Washington. Visitors are treated to a fantasy of color, design and animation with a series of larger-than-life illuminated displays set in a backdrop of holiday lit trees and architecture in the park.

This one time, 2.2 mile walk-thru will begin and end at Sprinker Recreation Center on Sat., Nov. 23, 5-7PM. Walkers of all ages and abilities (including wheelchairs and strollers) are invited to the "Sneak Preview." Get an upclose look at the displays, maybe take the family Christmas photo in the midst of the lights or with the 15' illuminated teddy bear.

Key Peninsula Emergency Preparedness Committee

The Gig Harbor - Key Peninsula's Emergency Preparedness Committee, Inc. will meet on the first Monday of the month on December 2, 1996 at 6:00 to 8:30 p.m. in the Gig Harbor City Hall, 3105 Judson, Gig Harbor, Wa 98335.

Anyone interested in Emergency Preparedness on the Gig Harbor and Key Peninsula is welcome to attend. For more information call 857-3268 Tel/Voice Mail or 857-3368 FAX. Our E-Mail address is rrsa@tc-net.com.



Joe Barrow of Longbranch stands by his fourth place winning water color at the fair's arts display.

Photo by Hugh McMillan



Episcopal Church



St. Hugh Episcopal Church

E. 280 Wheelwright

Allyn, WA 98525

(Up hill toward Lakeland Village)

YOU ARE WELCOME

Sunday Worship at 8:30 am and 10am

The Rev. Robin Moore,

Vicar (360) 275 - 8446

Church Phone (360) 275 - 8450

* New *

Worship Hour



Grace Presbyterian Church

8:30 a.m. Sunday

Miracle Ranch
15999 Sidney Rd S.W.
(206) 857-7284

Lakebay Christian Assembly

2406 McEwan Road KPN - P.O. Box 310

Lakebay, Washington 98349

Pastor Tom Olsen • 884-4854

"The Sunday Family Gathering Place"

Christian Growth Groups 10 am

(Nursery through Adults)

Morning Worship Service 11 am

(Including Kids Church)

Wednesdays - Open for prayer 9 am to 7:30 pm

"Women of Influence" - Women's Bible Studies - Wed. 10 am to noon

Uplifting Music

Practical Messages

A Place where you can enjoy your Faith!

Community Bible Fellowship

Meeting at Minter Elementary School

12617 - 118th Ave.

SUNDAY SCHOOL 9:30 a.m.

Classes for all ages

BIBLE TEACHING &

WORSHIP 10:30 a.m.

Nursery Care Provided

"Warm fellowship, solid Bible teaching, and informal worship atmosphere"

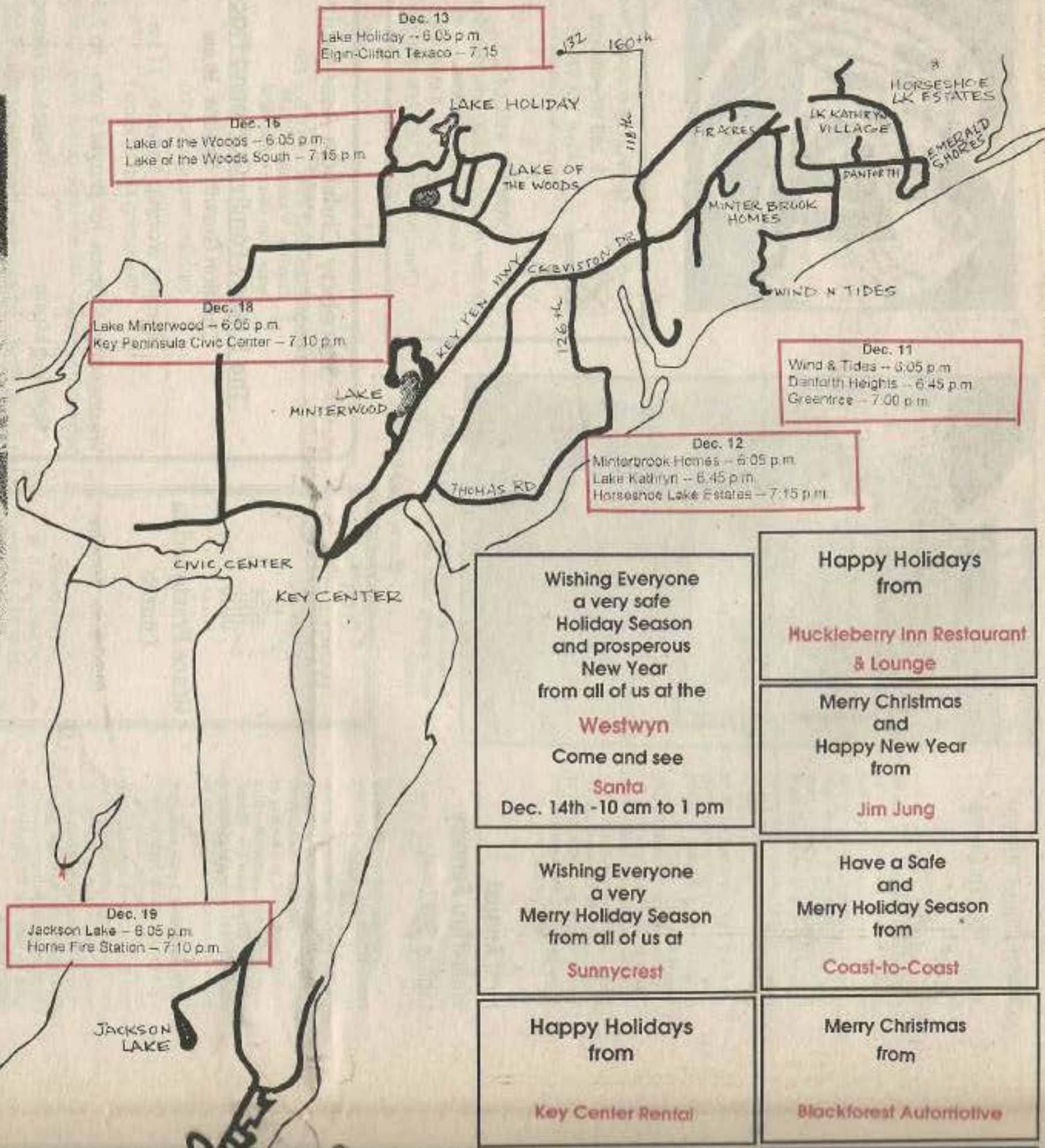
Pastors: Tim Cedarland & Jeff Olive Youth: Jon Kilcup

For more information call 884-1711, 884-1999 or 857-3215

Here comes Santa!



SANTA will be traveling throughout the Peninsula with candy for the children.... Listen for his siren! Watch for the lights! See his schedule for your neighborhood.



Wishing Everyone a very safe Holiday Season and prosperous New Year from all of us at the **Westwyn**. Come and see **Santa** Dec. 14th - 10 am to 1 pm

Happy Holidays from **Huckleberry Inn Restaurant & Lounge**

Wishing Everyone a very Merry Holiday Season from all of us at **Sunnycrest**

Merry Christmas and Happy New Year from **Jim Jung**

Happy Holidays from **Key Center Rental**

Have a Safe and Merry Holiday Season from **Coast-to-Coast**

Merry Christmas from **Blackforest Automotive**



Merry Christmas

Dec. 29
 Palmer Lake -- 6:05 p.m.
 Taylor Bay Estates -- 7:30 p.m.
 Longbranch Fire Station -- 8:00 p.m.

Happy Holidays from Everyone at
PTI Communications

Have a Safe and Merry Holiday Season from
Horseshoe Lake Golf Course Restaurant & Lounge

Happy Holidays from
Key Center Trading Post

Merry Christmas and Happy New Year from
Myr Mar Accounting

We wish a safe journey & best wishes to Santa on his Key Peninsula route and a Happy Holiday Season to all our clients & friends.
From Century 21 RealEstate

Merry Christmas and Happy New Year from
Oliver's

Merry Holiday Season from
Johnson's Bulldozing

Happy Holidays from
Minter Veterinary Hospital



Key Center Rental

Happy Holidays from Everyone at
Key Bank

Merry Christmas and Happy New Year from
Angel Guild

Blackforest Automotive

Happy Holidays from
ATB Services

Have a Safe and Merry Holiday Season from
ABBA Backhoe



The Key Peninsula Fire Fighters Association thanks the Merchants listed for making it possible to bring this message to you.

- KEY PENINSULA BUSINESS ASSOCIATION MEMBERS**
- Alder Hill Farm
 - Angel Guild
 - ATB Services
 - Capital Lumber, Inc
 - Charbonneau Construction Co.
 - Close to Home Espresso
 - Colony Real Estate
 - Country Gardens Florist
 - Lori Deacon
 - Gig Harbor Chamber of Commerce
 - Henderson Bay Products
 - Homeport Restaurant & Lounge
 - Horseshoe Lake Golf Course & Restaurant
 - Key Bank
 - Key Bank (Purdy)
 - Key Peninsula Civic Center
 - Key Peninsula Fire District #16
 - Peninsula Parks Council
 - Lakebay Lumber
 - Lakebay Marina
 - Local Motive Catering
 - Longbranch Storage
 - Mountain View Towing
 - Myr-Mar Accounting Service, Inc.
 - John Olson, D.D.S.
 - Oica Design
 - Palumbo Agency
 - Pampered Chef
 - Peninsula Gateway
 - Peninsula Light Company
 - Peninsula School District
 - Glen Pizzola
 - PTI Communications
 - William F. Ross, M.D.
 - Shear Magic
 - SLS Designs Limited
 - Keith Stiles
 - Sunnycrest Nursery
 - Telco Community Credit Union
 - Templeton's Chevron
 - The Green Gate
 - Westwind Motel
 - Panson's Pond Ostrich Farm
 - Key Peninsula Fire District #16
 - Baldans & Blossoms Florists



Two Local Businesses Merge Successfully

In September this year there was a dramatic change for two local businesses that is creating excitement.

Joanne of Country Options and Teri of Hair by Teri merged their businesses at the KC Corral in Key Center.

Teri and Joanne are like Ying & Yang in their association. They say they add balance to one another. Teri was ready for changes in her salon and Joanne was ready to gear down. They've put their resources together and created a pleasant environment that their clients and associates all enjoy.

Those familiar with Joanne agree that she thrives on change. "Even so" says Joanne, "merging with Teri and her associates is very different situation for me. I've been a sole-proprietor for 24 years. In my first salon, I had a wonderful partnership for three years before I married and moved from my home town in New York. For years, I've craved that same pleasure in a working relationship. I hadn't met anyone I felt that same kind of compatibility with until I came to know Teri."

A native Washingtonian, Teri entered the beauty profession 22 years ago in Mount Vernon. "Owning a salon wasn't something I'd contemplated" says Teri, "but this salon was so homey and my clients so friendly and caring, I couldn't let the shop close 3 years ago, when Sylvia was unable to sell the business. It was wonderful how much support my clients contributed when I decided to be the salon's new owner." "I've had set backs due to health problems, but with the help of my associates, the business has survived. I've enjoyed owning the salon but running the business together with Joanne is much better. It's satisfying to be able to work and enjoy the company of clients and associates without the

For a hair style that's as PERSONAL as YOUR SIGNATURE...

ASK FOR

Joanne

Complimentary hair designs reflect an individual's personality as well as enhance their facial features and body shape.

BE THE BEST YOU CAN -- call 857-4247

weight of solitary management. Having Joanne here is encouraging professional growth for us all. We've all been sharing and learning from each other's individual strengths and talents.

When Joanne was asked how she feels about her new environment her reply was "I feel like I've come home."

COUNTRY



OPTIONS

WELCOMES YOU

to

OPEN HOUSE

Dec 3 through Dec 24

Refreshments ~ Gifts ~ Drawing

*TERI
style cuts
weekly sets
perms / color
waxing*

*LEE
weekly sets
family care
perms
color*

*CYNN
nail technician
gels / acrylics
manicures
pedicures*

*JOANNE
contemporary
hair design
creative perms &
coloring*

857-4247 884-5999

K C CORRAL



TO YOUR HEALTH



by William F. Roes, MD

A study in the New England Journal of Medicine last year demonstrated the value of an in-depth home geriatric assessment in helping older patients maintain their independence. In the study, a team of geriatric nurse practitioners visited the patients at home and evaluated the seniors functional status, medications, balance, home safety and other health related issues. The results were that those patients visited by the nurses were much less likely to need assistance with daily activities, and had 60% fewer long term nursing home placements than the control group. I found this interesting, but not very useful, as Medicare won't pay for this type of intervention in healthy seniors, and the cost would be prohibitive. It did strike me that during the holiday season many of you will be visiting elderly relatives and friends in their homes, and I'd like to deputize you all as "Volunteer Geriatric Home Health Assessors". The following are my suggestions of things you look into:

1. Senior Safety Check - Are there impediments to getting around, in, and out of the house, loose rugs? Broken or absent handrails? Is there a functioning fire alarm? Is there easy access to the phone and is your number readily

available? Are there combustible materials too close to heat sources?

2. Senior Sensory Check - Is there adequate lighting? Are their eyeglasses adequate for their needs? Do their hearing aids work?

3. Medication Check - Offer to help clean out the medicine chest. Are there old medicines that should be thrown out? Is it clear which medicines should and are being taken?

4. Socialization Check - Are they getting out and interacting with other people? Do they have access to the many community groups? Are they aware of Pierce Transit? Do they need a disabled parking permit?

I'm not saying you should burst in on Aunt Minnie like a house afire this Christmas, but when you're visiting take a few minutes to see if there's something she needs more than the fruitcake you brought her. The opportunity to stay independent in one's own home is one of the greatest gifts you can give this holiday season.

The best to all of you from our office staff at the Key Medical Center.



Merry Christmas and
Happy New Year
From All Of Us
At The Key Peninsula
Civic Center And The
Key Peninsula News



Employment Security Assists Veterans Year-Round

Nearly 15,000 veterans were placed in jobs through the assistance of the Employment Security Department during the last year, according to Commissioner Gary Moore.

"Veterans' Day recognized the contributions of millions of men and women who served in the armed services to protect America," said Moore. "However, we must do more than just remember them. We must assist them during times of peace by helping them obtain the education and skills necessary to be competitive in today's workplace."

The estimated number of veterans currently living in Washington state is approximately 640,000. Employment Security provided employment services to more than 45,000 veterans during the last year. Furthermore, the department's Local Veterans Employment Representatives and Disabled Veterans Outreach Program specialists helped 14,773 veterans find jobs, counseled 5,684 and helped 1,372 to access training.

"The department met or exceeded every veteran's performance standard dictated by the U.S. Department of Labor during the last year," said Onesimo Espinoza, Veterans Unit Manager.

Weitzel's Recycling 884-2772

Crushed Cans \$.25 /lb
Not Crushed Cans \$.15 /lb
Cans with trash or aluminum foil up to \$.02/lb.

Accepting donations of aluminum for Civic Center, Boy Scouts, Volunteer Park And other non profit organizations add .05 to above prices.

We will send out checks for money donated to organizations once a month.

WANTED:

Major Appliances: electric & gas stoves, washer/dryers, dishwashers and hot water tanks (small charge)

FUNKY FOOTWORK

ADULT EXERCISE CLASSES

10 AM

MONDAYS, WEDNESDAYS & FRIDAYS

FOR INFORMATION CALL

884-4590

CLASSES HELD IN THE KEY PENINSULA CIVIC CENTER IN VAUGHN

Key Center Rental

853-5377

13712 KPN

Next to Shell Gas Station
(formerly the Continental Tire Building)

Where To Pick-Up A Copy Of The Key Peninsula News

If you would like the *Key Peninsula News* mailed to your home address, please fill out the subscription form on page 3 of this issue, along with a \$10 subscription fee.

<ul style="list-style-type: none"> Black Forest Automotive - Key Center Bridgeway Market in Purdy Brookside Restaurant Brookside Veterinary Hospital Conex Food Store - Purdy Century 21 - Colony Real Estate - Key Center Coast-to-Coast at Lake Kathryn Cost Less Drugs at Lake Kathryn Country Gardens Farmer George's Meats - Port Orchard Fenholm's - Gig Harbor Gig Harbor Chamber of Commerce Hair by Terri - Key Center Home Country Store Home Food and Grocery Home Texaco Huckleberry Inn - Key Center Key Bank in Key Center Key Center Library Key Center Liquor Agency Key Center Rentals Key Center Tavern Key Center Trading Post 	<ul style="list-style-type: none"> Key Peninsula Civic Center Key Peninsula Health Center Lakebay Lumber Laundromat - Home LeBristol - Gig Harbor Longbranch Merchantile Lu Lu's Homeport Restaurant in Home Minter Veterinary at Lake Kathryn Oliver's Smokehouse Grill - Key Center PIZZA PLUS - Key Center Purdy Liquor Agency Purdy Pictures QFC - Point Fodick Riley's Automotive - Key Center Strath's Food - Gig Harbor Suncrest Nursery in Key Center Teico Community Credit Union - Key Center Teico Community Credit Union - Point Fodick The Harvest Time Buildings Thriftyway Market - Gig Harbor Wall's Fine Foods at Key Center Wall's Fine Foods at Lake Kathryn Westwynd Motel & Apartments in Purdy
--	---

Best Selling Products!
Rockbottom Prices!

Find out how to
SAVE 60% OFF WHOLESALE on
"The Hottest Products in the Health & Nutrition Industry"
and
EARN \$25,000 A MONTH!
CALL 1-800-762-1176 for FREE Fast Start Info!



checked. Skin allergies, anemia and tapeworm infestation are a few examples. Fleas can still be a threat during the fall and winter months because temperatures indoors mimic those seen outdoors during the spring and summer. Program and Advantage, two once-a-month flea control products, are excellent choices for flea control.

3. **Getting hit by a car:** Leash laws, which protect property and people from others' dogs, encourage the prevention of this common threat to healthy active dogs and cats. Remember, with our often wet, sometimes foggy and occasionally snowy weather, motorists have harder times avoiding pets. If you don't want your pets to become a statistic, keep them indoors or in a confined outdoor environment.

4. **Salmon Disease:** During the late fall and winter in the Northwest, salmon washed ashore or fed in a fresh or smoked form can infect our pets with a bacteria-like organism that causes serious illness and even death if not treated. If you reside on the water, watch for early symptoms of listlessness, loss of appetite and possibly vomiting or diarrhea in your dogs. Prompt veterinary care can save your pet.

5. **Urethral Obstruction in Cats:** Cats sometimes acquire a sterile inflammation of the urinary bladder that is accompanied by small crys-

als or mucus in the urine. Male cats can die within 24-48 hours if the condition is not recognized and treated promptly. Owners should monitor male cats and consult a veterinarian as soon as possible if any signs of discomfort and straining appear when the animal attempts to urinate.

6. **Cold Weather:** Temperatures below freezing can be stressful to even the most furry of our animal companions. Provide some insulation for your pet if it must stay outside, but consider at least allowing the pet to sleep in the garage or a washroom at night, if possible. Cold weather can especially aggravate the geriatric pet with arthritis, or a puppy or kitten that does not yet have the ability to regulate its body temperature.

I'll end this article with a few tips for the holidays. Pay close attention to your dogs when Christmas trees are present. They often enjoy chewing on all the exposed electrical cords. This is especially a problem with puppies. Cats love to use your tinsel and Christmas bulbs as punching bags. Tinsel can wreak havoc on your cat's intestine. Although cats are usually too small to ingest Christmas bulbs, dogs may use them as chew toys. Finally, remember to give a lot of thought to the purchase of a pet during the holidays. Avoid buying on impulse or emotion. Try to match the pet to your family and lifestyle.

Keep your pets happy and healthy. It will make your holiday season much more enjoyable.

A Call To Vendors

Pierce County Arts Commission requests food vendors to apply for location at the Tuesday, December 31, 1996, First Night festival taking place in downtown Tacoma and Pacific Lutheran University. Vendors are needed for both indoor and outdoor sites from 5:00 p.m. until midnight, downtown Tacoma. Applications must be received by December 1, 1996. Preference is given to the earliest applicants since there are a limited number of concession spaces available. Festival organizers expect more than 25,000 people to attend this fifth annual event.

Diversity and affordability in

menu choices is encouraged, as are ethnic cuisines of all varieties. Pierce County Arts Commission strongly welcomes civic and community groups to apply. Indoor concession spaces are 15' x 15'. Vendors must comply with all health, electrical and fire regulations, and are responsible for required inspections and taxes. We provide liability insurance for indoor concessions and those vendors who do not have their own coverage. A registration fee is also requested. For further information and to receive an application, please contact Laura Lloyd at 798-3570.

Horseshoe Lake Golf Course and Restaurant



New Menu and Sports Bar Great Food At Affordable Prices

New Big Screen Sports Machine
Monday Night Football
Happy Hour 6:00 - 7:00 Every Night
"Liquor Now Served"

Sample Our New Menu

Chicken Fried Steak, Fried Chicken, Hot beef, Spaghetti, Prawns, Razor Clams, Halibut, Steaks, Burgers, Sandwiches, Hot Dogs, Home Made Apple Pie

Appetizers Galore

Super Duper Nachos, Callamari, Chcken Strips, Jallapeno Poppers, Onion Rings, Mozzarella Sticks, French Fries

Free Golf or A Free Meal

If You or Your Group
Eats Six Breakfasts, Lunches,
Or Dinners Get 1 Free Round
With Back 9 cart or a meal.
Expires 2/23/97
Ask Server For Details



IT'S TIME TO THINK TAXES!!!

Don't want to cross the bridge?
Want personalized and professional services?
We can help you.



ATB SERVICES

Individual, Partnership, Corporate,
Fiduciary and Estate Tax Returns.

Accounting and Bookkeeping Services

Members of

Washington State Tax Consultants
National Association of Tax Consultants
Washington Association of Accountants
Key Peninsula Business Association

Dick Granquist
Barbara Granquist, E.A.

Call for an Appointment 884-4163
Evening and weekend appointments can be
arranged

P.O. Box 673

Lakebay, WA 98349

Did You Know?**Key Center And Its Origins**

by Edmund V. Olson
(Part III)

Like many of the Swedes of the time, my grandfather left to escape the church-state hegemony. They were not particularly Lutheran, which further removed our family from the observance of Swedish traditions. My mother's family was English via Canada, and previously via an English ethnic colony in Kansas. Other local families were also Kansan, so it is perhaps understandable that my people have a Jay hawk accent. My father though, when he went to Sweden, was assured there that his "nursery Swedish" had a Malmo accent.

The present homestead house which I own, was built in 1903. Grandfather did not like the family living in Tacoma so much, and where, he joked (you never can tell about Swedish humor), grandma could get to church too easily to give them all her money. Nick Peterson helped build the farmhouse, of course, using Winchester brick in the hearth and fireplace.

The YMCA camp has been at Glencove on property given over to it in 1909 by a previous mayor of Tacoma, W.W. Seymour. One of the early youth workers at Tacoma YMCA and at Camp Seymour was my mother's uncle, D'Arcey Teasdale-Buckell. Soon his family and three other related families had come down from Canada to live

nearby. This included both sets of my mother's grandparents, fugitives from the cold Alberta winters. Grandpa kept the store for a while, and he did some building, including my other grandfather's barn, which I still have on the homestead. My grandmother, Agnes Bill, lived with us while mother helped dad in the hatchery. Grandpa took over the chickens when dad decided to quit the hatchery, and go completely into dairy. Frank Bill was a small wirey man from whom I must have inherited my "short genes, but he could out-work three others.

The Buckells and the Bills did not like the church at Vaughn, which had been built Anglican, but by that time had become Calvinist. With the ecumenical guidance of Uncle D'Arcey, the First Christian Church was started at Vaughn on Bill property. Mother played the organ and piano there for two generations. She had been taught by her mother, who had been taught by her mother. For years I walked to school at Glencove every week day, but Sundays I rode to Sunday School in our Hupmobile (later in our Jewit), where the teachers and preachers were all relatives. When the roads were bad, we went by horse. My brother keeps the now-restored buggy at his home in Key Center - awaiting the next parade.

The Nichols family, northeast of the crossroads, had a team, as did my father. They too, availed them-

selves of an option then available to Pierce County taxpayers: that of working out one's taxes laboring on the county road crew. A man with a horse was credited double, and with a team, was credited triple. Dad was also credited with gravel he supplied from the pit, just above the present Huckleberry Cafe. About 1924, the lower road to Vaughn was thus wisely put in, named Olson Road.

When I started school in 1929, all of the roads were gravel or dirt, but soon the Farm-to-Market Administration (pre New Deal), paved a 1-1/3 mile stretch north from the crossroads. As I walked the mile each way to school, the paving of the road, later the WPA trying to reduce the bank by hand labor, then the erection of the buildings at Key Center, were major diversions for me.

With the end of prohibition had come a tavern, and our auto camp had become a problem. WPA workers and others would break in to drink out of sight. Also their poker and crap games were offensive to many, if not illegal. It was destroyed, as the bank was further reduced for the Shell station. With lumber from the camp and also from a chicken house or two, a

berry shed was built on the site. That bulldozer moved more gravel from the bank and the gravel pit in an afternoon than the WPA did in a full year of the project.

My sister Phyllis now has the recreational vehicle establishment a little west of the old auto camp.

Watershed Committee

The Key Peninsula - Gig Harbor - Island Watershed Committee will meet on December 5, 1996 from 6:30 to 8:30 p.m. at Peninsula Light Business Office, 133215 Goodnough Drive N.W., Purdy, WA 98332.

Preceding the meeting there will be a tour of the Minter Creek Fish Hatchery. The tour will start at 3:00 p.m. and will convene at the hatchery. The hatchery is located at 12710 124th Ave Court KPN, just off Crevison Drive.

If you have any questions about this meeting or the watershed planning process, would like directions to the tour or meeting sites, or if you would like to be added to or removed from our mailing list, please contact Barbara Ann Smolko at (206) 596-2725 ext. 226.

DRAWING & PAINTING CLASSES
SIGN UP NOW

10 Weeks Jan. 7 - Mar. 20

- Beg. Drawing
- Adv. Drawing & Portraiture
- Painting - Color Theory
- Painting - Watercolor

Sally Tjostelson, Illustrator 857-7552

REGIONALLY ACCLAIMED
"SOUTH SOUND'S BEST BBQ"

Located in the unique western setting of KC Corral at Key Center

Oliver's
Smokehouse
Grill

"Come and Get It!"

9013 Key Peninsula Highway, Key Center, WA 884-1202

Santa will be here
at the KC Corral
December 8th at 4pm.
Stop in and see us!

Closing Dec. 24th at 3pm
Closed Christmas Day

Open
Tues. through Sun.
Sat. to 8pm
Closed Mondays
Take-out orders welcome

Meet Cool Singles

Make new friends in
these categories:

Men Seeking Women

Women Seeking Men

Men Seeking Men

Women Seeking Women

People are waiting - call now!

tacoma
206 272-1212

seattle
206 447-4800

THE
CONFIDENTIAL
CONNECTION®

record ads **FREE!**
listen to ads

ACCESS CODE: 2103

Just \$1.99/\$2.49 per minute for certain optional features.

Internet: <http://www.movo.com>

ADULTS ONLY! The Confidential Connection® does not prescreen callers and takes no responsibility for personal meetings. 800-825-1588

Vaughn Elementary Joins P.T.A.

by Diane Ramsey

The Vaughn Parent-Teacher Organization just voted to join the P.T.A. The P.T.A. is a state and national non-profit organization. Parent groups in Peninsula School District schools have so far been ad hoc committees with no legal status, training, or liability insurance. The state and national Parent-Teacher Association offers a legal and tax structure, low-cost training on many topics, low-cost liability insurance, and even grant money for projects involving parents. We can't lose! We are very excited about learning more and being able to do more for the kids.

Vaughn welcomes three more senior volunteers. Virginia Liebergesell, Bob Lovell, and Jim Blundell have joined our team of senior Mentor/Tutors. Virginia and Bob are already coming in three mornings a week to read. Jim is starting with Thursday mornings, since he already volunteers at the fire station. We are now expanding our senior program. We've persuaded Bob to bring in some of his paintings and work with some of

the students on an oil painting project. Other senior volunteers will soon start projects with computers and even video!

Expanded Reading Program. Now you can help the students read without coming to the school. We are looking for volunteers who would like to record reading material on tape. Students who need extra help can then take the tapes home and listen to them while they read. We also need more cassette recorders to help with this project.

Homework Club. We are starting this club to help students with their homework and teach them study skills. The club will meet Tuesdays and Thursdays to begin with, from 3:00 to 3:30. It will then expand to daily meetings. You don't need to have good study skills to help out - we have printed materials.

School Events. Bob Wickline and his bluegrass band gave a mini-concert at the school not too long ago. Wow - were they hot! Everyone was tapping his feet and clapping his hands. Most recently we had a Veteran's Day assembly which featured the readings of es-

says written about our veterans. Patriotic songs were sung in their honor.

Also, at the last School Board meeting, our reading specialists gave a presentation about the various special reading programs. The reading test scores are going up and up and up. We have such a great team at Vaughn!

Fundraisers. Vaughn accepts aluminum cans and newspapers as a community service and to raise funds. If you recycle, please consider recycling at Vaughn Elementary.

If you would like more information on any of the above activities, call the school at 884-5700 and leave a message for Diane Ramsey, Community Coordinator.



Merry Christmas and
Happy New Year
From All Of Us
At The Key Peninsula
Civic Center And The
Key Peninsula News

**LAKEBAY
WOODWORKS**

**JOHN CARLSON
BUILDING
CONTRACTOR**

NEW HOMES & ADDITIONS

PROFESSIONAL
BUILDING-DESIGN

TOP QUALITY CONSTRUCTION

884-3149

2925 McEWAN RD KPN LAKEBAY

LICENSED - BONDED - INSURED
LAKEBW*196JO

Thank You!

The Following groups, persons, and/or organizations have donated money to the Key Peninsula Civic Center.

- Mary & Jarvis Krumbein
- R.W. Radcliffe
- Judy & Don Mills
- Anges Whitmore
(In Memory of Alice Elliott)
- Angel Guild
- Lori Deacon
- Ed Taylor
- Martha Applegate
(In Memory of Clem Kurz)
- Key Bank - Key Center
- KP Lions Club
- KP Historical Society
- Gene Marie & Richard Scott
- Jim & Ruth Bramhall
- Sherlie Marietta

Cougar Corner

by Margo Macdonald

After an early winter preview, we at Key Peninsula Middle School are gearing up for our Christmas season. Tuesdays and Thursdays will find us on the mats or under the hoops; call for schedules on our boys' wrestling and girls' basketball teams. December is a busy month for our choir and band. December 6 the choir will be going to Seattle and on December 17, they will be in concert at the Middle School at 7:30 p.m. Our band will be performing at Tidefest this year and we invite all to come out and support this fundraiser at Gig Harbor High School on December 7. ASB will be having an after school meeting on December 11 prior to the Christmas Dance on December 13. There will be an Emergency Bus Drill on December 18. Out Student of the Month Assembly and KPVPO meeting will both be held on Thursday, December 19; the first at 8:30 a.m. and the second at 2:45 p.m. Christmas break runs from December 23 to January 6.

We want to thank all the students, parents and staff who participated in our first Activity Night last month. We had approximately 80 students who enjoyed two hours of free time in the gym, computer lab, art room or home arts room involved in many interesting activities. Thank you to our volunteer parents for supervising. We were so encouraged by the turnout and behavior of students, that this event will be repeated every quarter!

The Peninsula School District is sponsoring an education forum on Thursday, December 5 beginning at the Key Peninsula Civic Center early in the day and concluding with a public discussion of the school district's "Blueprint for Progress 1996-2000" program and challenges facing public education in the 21st century.

The *News Tribune* is offering a homework hotline number again this year and many of our KPMS teachers are participating. If you need an update, call 383-5327 ext. 1004.

The KPVPO extends best wishes to all this holiday season and will look forward to 1997 as a continuation of a great school year!

CLASSIFIED ADVERTISING RATES

Call 884-4699 to place an ad

Classified ads are \$5.50 for 10 words, 30¢ each additional word. Classified ads can have display boxes: 1 column inch x 1 inch is \$11.00, 1 col. x 1.5" is \$14.30, and 1 col. x 2 inches is \$19.25.



A View From Home

by Marty Marcus

Having been slowed down in my active retirement by an uncooperative kidney stone, I've had more time to look out the window at this view from Home. Not only does the ever-changing sky picture make me wonder what's coming next, but the constant change in Carr Inlet, both in color and surface activity, leads my mind along countless paths.

One of my favorite views is in the summer when the neighbor's children, Sara and Joshua, and their dog, Sadie, are playing on the beach, in the water, and on the float. It makes me really appreciate the efforts many Washingtonians have made to preserve this great area.

It also makes me think back nearly thirty years to a week when I was both the bus driver and science teacher accompanying a seventh grade class on a trip to Southern California. We stopped one night at a coastal state park just below Santa Barbara. The students could hardly wait to get off the bus and down to the beach. A little while later they came back to camp asking, "How do we get this black tarry stuff off of our feet?"

It's difficult to imagine the consequences of a major oil spill if you haven't actually been in the midst of one. The Puget Sound area has been very lucky so far in avoiding catastrophic tanker disasters, but that could change in a hurry.

While it's encouraging that a federal judge has ruled that Washington may set regulations for tanker operations in Washington waters that are stricter than federal regulations, the legislature in the past few years has indicated that it's more interested in being nice to tanker company lobbyists than in protecting the waters and shores of the Sound, which means they aren't about to set up any rules that might eat into the profits of the tanker owners.

Personally, I really prefer government by legislators rather than by initiative, but I'm willing to concede that there are times when the legislators are not responsive to the wishes of the people and we need to use the initiative method to get the kind of laws we want. It looks as if Initiative 188, now in the signature-gathering state, is what it's going to take to get the Legislature to enact adequate measures to protect Puget Sound and our coastal waters. It's a lot cheaper to prevent an oil spill than to clean up after one.

Huff Reappointed To Chair Budget-Writing Committee

State Rep. Tom Huff, R-Gig Harbor, has been reappointed by Speaker of the House Clyde Ballard to chair the House Appropriations Committee. Huff was recently re-elected to his second term as a representative in the 26th District.

The Appropriations Committee reviews all legislation which requires an expenditure, with the exception of transportation and capital construction items. As chair of the committee, Huff will also serve as the chief budget writer in the House and will work with the Senate to craft the state's two-year operating budget.

"I look forward to continuing the progress we've made in scrutinizing the budget, making good use of taxpayers money, and improving efficiencies while still meeting important priorities," Huff said.

University of Puget Sound Arts and Events Calendar for the Weeks of Dec. 1-14

Wed., Dec. 4, ART: Kittredge Gallery features a student art competition and exhibits by senior art majors Susan Burnham and Stefani Rossi, through Dec 20. There will be an opening reception on Dec. 4, 5-7PM. Gallery hours are Mon-Fri, 10AM-4PM and Sun., 1-4PM. Free Admission.

Fri., Dec. 6, MUSIC: Edward Hansen presents his traditional Organ at Noon concert, "Music for Christmas: the 8th Annual Organ Recital and Carol Sing," at 12:05PM in Kilworth chapel. Free admission.

MUSIC: The University Band and Wind Ensemble, directed by Robert Musser, features trombone soloist Keven Stewart, 7:30PM, in the Concert Hall. Free admission.

Sat., Dec. 7, CHORAL: The University Madrigal Singers and Adelpian Concert Choir, conducted by Paul W. Schultz, present "Bienvenido Navidad - Welcome Christmas," 7:30PM in the Concert Hall. Also presented Sun., 3PM in the Concert Hall and Mon., 7:30PM in the Concert Hall. Tickets are \$8 for general admission and \$6 for seniors/students. Call 756-3419.

Sun., Dec. 8, WORSHIP: Sacred choir music, scripture readings and an Advent message comprise the 14th annual Festival of Lessons and Carols at 7PM in Kilworth Chapel. Free will offering of canned goods will be collected. Free admission. Call 756-3374 for more information.

Tues., Dec. 10, CHORAL: The University Chorale presents John Rudder's "Con Santo Spiritu" and Dorian Singers present "Dancing Days," both conducted by Paul W. Schultz, 7:30PM in Kilworth Chapel. Free admission.

LAKEBAY ROOFING

Pierce, Kitsap, and Mason Counties

- RESIDENTIAL •
- RE-ROOFING •

SHAKE • TORCH DOWN • TILE COMPOSITION • CEDAR SHINGLES

Free Estimates

884-2186

Tom Rolfzen - Owner

WN. ST. CONSTR. REG. LAKEBR*1570K

NORTHWEST AUTO CLINIC

9401 SR 302, Gig Harbor, WA 98329
2.5 miles west of Purdy at Horseshoe Lake Cutoff

(206) 857-5999
(360) 895-9401

SINGLE USE CAMERAS from \$5.56 each

Flash, Non-flash and Panoramic



Also 35mm film, 24 exp 100 or 200 ASA, 3 for \$5.00!

Located just south of Key Center in the big red barn!

884-9696

M-F 9:00 to 6:00

CUSTOM CAMERA DESIGN, INC.
15921 84th St. KPN LAKEBAY



Brookside Veterinary Hospital

(4 miles W. of Purdy on Hwy 302)

THE ONLY MIXED ANIMAL PRACTICE LEFT ON THE PENINSULA!

Have You Winterized Your Pets Yet ???

HORSE

- Teeth Floated
- Vaccinations and Worming current
- Adequate Shelter
- Balanced Nutrition
- Current Foot Care
- Colic Prevention

DOG/CAT

- Vaccinations Current
- Adequate Shelter
- Balanced Nutrition
- Dental Disease
- Coat Condition/Groomed

HOURS

Mon, Tues, Thurs & Fri
8am - 5:30pm

Wed & Sat 8am - 12pm

857-7302

Lisa Woods DVM and Christin Finn DVM

Farm calls available any day in addition to 24 hr. emergency service for all pets.

MERRY CHRISTMAS



CHARLES S. BUCHER
Designer / Draftsman

HARBOR HOME DESIGN

Custom Home Design / Log Homes
Additions / Remodels

8811 N. Harborview Dr. #B1 Office (206) 851-8808
Gig Harbor, WA 98332 Fax (206) 858-1744

Place Your
Business Card
Here For
\$18.65/month

Plantland
Open for the holiday season
Nov. 29 - Dec. 23
Tues-Sat 10am-5pm
Poinsettias, Swags, Wreaths
Rubberstamps & Embossing Supplies
Located approximately 2.5 miles South
of Keycenter.

Almost Home Boarding Kennel



Extra Large Kennels
Personal Attention
(Just Dogs)



Hours: Sandy - Nancy
8:00 a.m. - 6:00 p.m. (206) 884-2633
Closed Tues. and Wed. Lakebay, WA

Place Your
Business Card
Here For
\$18.65/month

Tim's Sprinkler Service

Factory Trained
Sprinkler Repair & Maintenance
"Custom Installations"



Tim Putnam
Proprietor

884-9044
TIMSSS *123K7

BULLDOZING
BACKHOE



GRAVEL AND FILL DIRT
LOG BULKHEADS

Johnson Bulldozing Co.

Lakebay, Washington 98349
Phone 884-2362

JOHNSB * 245DE PHIL JOHNSON
PHONE 884-3330 PHONE 884-2607

Septic Systems • Underground Utilities • Site Preparation
Dump Truck Services • Road Building • Land Clearing
Stump Burning • Hauling • Roadside Brush Cutting

1 John 3:12



John 3:16

Backhoe & Dozing Service

(206) 851-4067

Mike A. Ross 10523 132nd Ave KPN
Licensed and Bonded Gig Harbor, WA 98329
Pierce, Kitsap and Mason Counties



HOME FEED & GROCERY

MONDAY through FRIDAY 8AM to 10PM
SATURDAY 9AM to 10PM
SUNDAY 9AM to 9PM
ALL HOLIDAYS 10AM to 6PM

Corner of 4th & KPN Lakebay, WA 98349 (206) 884-2321

Ryan Andresen

Domestic & Imports

Black Forest Automotive

15317 Key Peninsula Highway (206) 884-3431
Gig Harbor, Washington 98329

SFA Snodgrass Freeman Associates AIA

7700 Pioneer Way, Suite 200
Gig Harbor, WA 98335
Phone: (206) 851-8383
Fax: (206) 851-8395

David J. Freeman, AIA

Architecture Planning Consulting

Sixth Avenue Kid's
top quality children's resale



6409 6th Ave. Suite #1
Tacoma, WA 98466
(206) 566-8808

Jule P. Johnson
Jane Williams

Longbranch Community Church



Worship 11:00 a.m.
Sunday School 10:00 a.m.
Longbranch, WA
Pastor: Robert W. Olmsted, D. Min.

(206) 884-2961
(206) 851-2690



Harbor Furnace SERVICE & INSTALLATION

TOM WILLIAMS

P.O. BOX 368 Lakebay, WA 98349
P.O. BOX 1 GIG HARBOR, WA 98329

COUNTRY LINE DANCING LESSONS

For information on future
dates & times call

Mr. Jack at 857-2583

If the response is good
lessons will be scheduled A.S.A.P....

CLASSIFIED ADS

SAVE Thrift Store. Located below PHS in Purdy. Great buys in clothing, hardware, kitchenware. Open Mon., Tues., Thurs., Fri. and Sat from 10-4. Proceeds benefit PHS scholarship fund. Surprise sales throughout the store during the month. **Phone 857-2800.**

WATKINS PRODUCTS are available, call Marv and Myrtle Ketzur at **884-3566. VISA/MC.**

DEADLINE for KP News classified ads is the 20th of each month. Call **884-4699** to place your ad.

ANGEL GUILD THRIFT STORE, K.C. Corral, 10 a.m. to 4 p.m. Wed. through Fri. hrs - 11 a.m. to 4 p.m. Saturday 11 a.m. to 3 p.m. In store specials weekly. All proceeds benefit the Key Peninsula. **884-9333.**

KEY PENINSULA BAPTIST CHURCH. Meeting Sunday Mornings at Key Peninsula Civic Center in Vaughn. Bible Study 9:30 am. Worship Service 11:00 am. Wednesday AWANA 6:45 p.m. Pastor James Rouse Phone **884-9994**

Housecleaning
One (1) Time Clean or Regular basis. Call Judie **884-4721** or Bambi **884-4906.**

CAR IN TROUBLE? Give us the test. Less expensive, yet the best. Japanese car specialist. Northwest Auto Clinic. **857-5999.**

HEARTLAND LANDSCAPING- Quality Work -Competitive Rates
Expert Pruning & Landscaping Services
Fall Clean - up Jobs
14 years Experience -
Gig Harbor, Since 1991
857-5399

The **Best Clean** by Maria. For your housekeeping needs call **884-1340.**

Bird Feeding Headquarters. Seed, Suit, Sunflower, Corn, Feeders. Bulk or by the pound.
Sunnycrest Nursery, located in Key Center. **884-3937.**

Counselling Services
Individuals & Couples
Sliding Scale - Key Center Health Center.
Lori Ann Brudvik Lindner, RC
564-4919 Ext. 34

Real Estate Agents !!
Join the **Century 21** team at Key Center. Work in your own neighborhood and enjoy the benefit of association with the world's most recognized real estate company. We have room now in our new office.
Call Joyce at 884-3304

Chateau Panache. Private Senior Care, park like setting, excellent food, 24 Hr. Care. Aide on duty. Call Mary. **(206) 884-5830.**

CHAINSAW AND LAWNMOWER REPAIR. Over 20 years experience. Reasonable labor rates, pick up and delivery available. **Call 851-4628.**

DEPENDABLE, quick, trustworthy housecleaning. \$10 per hr. Call Carolyn, **884-4382.**

GAMBLING EQUIPMENT To rent for Reno Night Fund-raisers. Blackjack tables, Chuck-a-Luck cages, dice table, money wheel, stools, etc. Call the Civic Center at **884-3456** for more information

DEADLINE for KP News classified ads is the 20th of each month. Call **884-4699** to place your ad.



The Key Peninsula Civic Center Needs Your Donations!

Yes, I want to contribute to the Key Peninsula Civic Center!

Name _____
Address _____ Phone _____
City/State/Zip _____ Amount Donated _____
May we thank you in the Key Peninsula NEWS? YES _____ NO _____
If donation is a memorial, place name here: _____

Mail donations to: KPCCA, P.O. Box 82, Vaughn WA 98394
Checks may be made payable to KPCCA. Thank you for your support!

Special offer on Primestar digital satellite TV system: \$99 for install and first month. Includes install, full system with remote, 24 hour customer service, and monthly guide. Call for details.
(800) 545-9612

Fill Dirt, \$60. Bank run \$80. Sandy soil \$70. Dark sandy loam top soil \$80. 10-12 yd. loads. Crushed and quarry rock available. **884-2413.**

Learning piano can be fun! 884-4874. Enthusiastic teacher can show you how.

Preschool Music Time -
Key Center
Friday's 10-11am
\$2.00 Fee
857-5031

First Aid Kits

Family Kit- Packed with supplies to provide for family emergency first aid needs.

Sport Pack - ideal first aid kit for any sport enthusiast.

Personal Pack - small first aid kit designed for personal needs.

These first aid kits all come in red nylon, soft-side cases and are great for keeping in the car, on your belt or bike, in your gym bag, or just in a kitchen cabinet.

They include items such as band-aids, latex gloves, gauze, scissors and tweezers, and other items, depending on the kit.

Dream Of Starting Your Own Business?

The Center for Economic Opportunity, a program of Metropolitan Development Council, is offering a free course in small business training for low income adults who live in Pierce County. The program will teach the skills required to create a small home business, and provide ongoing assistance. The classes will be held Fridays, from January 17 through February 28, 1997 on the Key Peninsula. For information and to register please call **858-1880.**

Free training for small business start-up classes or one-on-one for low-income, Pierce county residents will be held at the Center for Economic Opportunity at Purdy, 14307 - 67th Avenue N.W., Gig Harbor, WA 98329. Call **858-1880** for more information.

Used Oil Collection Tank at Riley's in Key Center



Season's from all of us at...

Greetings



CAPITOL LUMBER, INC.
9115 KPN N
IN KEY CENTER

Complete Hardware Store Lumber & Doors Christmas Lights & Gift Ideas!



****CLIP & SAVE****

: Present this coupon
: and **** SAVE ** 10%**
: on any
: Hardware Store
: purchase
: of \$15.00 or more!!
: (Makita tools excluded)
: Regular Priced Items Only
: Expires: 12/24/96
: *****



New Coordinator Named For Salatino Christmas Dinner

Preparations for the annual Salatino Christmas Day Dinner are being formulated with the announcement of a new guest coordinator for the Peninsula residents. Margarite Bussard has agreed to step up to this challenge and serve as contact person for seniors who would like to attend the dinner held at the Key Peninsula Civic Center instead of spending Christmas day alone. Bob Schottland, who has served in this capacity for several years, will turn over the reins to Mrs. Bussard so that interested parties can call her and be included on the guest list. The phone number to call is 884-3771. If there are other questions to be answered, Mike Salatino can be reached at 851-4556 and will be glad to address all other concerns about the dinner.

Published with express permission from The Peninsula Gateway - ok'd by Tony II/20/96.

Saving A Place Setting For The Lonely

No reason to spend Christmas Day dinner alone, couple believes

by Kevin Parks
Gateway staff

The day before Christmas 15 years ago, Mike Salatino went to visit a lodge brother in a nursing home.

The owner at that time of the fruit stand off State Route 302 on the Key Peninsula, Salatino was taking the man a fruit basket. Looking around at the bleak institutional setting made Salatino realize his friend wasn't going to have a very merry Christmas.

On Christmas Day as usual, Salatino and his wife, Joyce, opened the fruit stand in the morning so the absent-minded and forgetful could buy the things they'd forgotten. Weary, the couple closed the store, went home, sat around and did nothing.

"It was pretty boring," Mike Salatino said.

In fact, it wasn't much better than his friend's Christmas.

The next day, they vowed they were never going to spend another Christmas like that. The following year, the Salatinos launched what has become an annual tradition: a Christmas dinner with all the fixings and a visit from Santa Claus put on for older people from the region who would otherwise have spent the day alone.

That first year, Salatino said, the event was held at Miracle Ranch and about 50 elderly people were invited.

A few neighbors joined in over the years and now the Christmas bash is expected to have 100 people, and will be put on by a staff of 30 volunteers at the Key Peninsula Civic Center.

"We bring them in from all over," Salatino said. "This is not a drop-in thing. It's by invitation only."

"This is also not a 'poverty thing'; there's plenty of those around. It's for people who would otherwise be alone. I don't know any better way to put it."

It's necessary to have a list of invited people, Salatino said, because not only do participants receive dinner, but also Santa Claus will be on hand to provide gifts selected specifically for those attending.

The menu includes yams, potatoes, turkey, cranberries, "the whole nine yards," Salatino said. Also, some of the volunteers are expert bakers and will be providing four different kinds of pies, he said.

After the dinner is concluded, Salatino said, the dozens of volunteers all sit down to their own dinner on the leftovers and bask in the pleasure of having given Christmas cheer to people who might not have had any.

"It's a lot of fun," Salatino said.

Bob Schottland is acting as the invitations coordinator for the Annual Salatino Christmas Dinner and Party. Anyone who would be alone on Christmas and would like to attend should contact Schottland at 884-2951.

In addition, people who know of folks who should be invited should call Schottland.



fashions first

Price
Buster
Sale

Literally thousands of new items have just arrived...

Dumas one-button
wool-blend blazers
Available in red, black
and tan. Petite and reg.
Reg. 79.99

59.99

Pepper

7.99

Turtlenecks

6.99

Loose-fit all-time

casual

knit sweaters

in solid

checked

striped and

plaid

Velour

17.99

Santa vests

18.99

Christmas

tees

9.99

Christmas

sweaters

Only 24.99

harbor plaza 851-9515

Enjoy The Holidays
Shop Fashion's First and Nicholson's



Nicholson's Northwest Mens Sale

Real Wool-Blend Quilted Jackets	39.99
Down-filled Vests	34.99
Quilted Flannels	22.99
Flannel Shirts	12.99
Sweaters	25% Off
All Levis	29.99
Twill Slacks	24.99
Young Mens T-Shirts	12.99
Corcuroy Trousers	34.99
All Shorts	20% Off
Hooded Sweatshirts	19.99

Harbor Plaza • 851-6350